



**Count on it.**

**Parts Catalog**

**F60 Flail Mower**

**Groundsmaster® 3300 Series All-Wheel  
Drive Traction Unit**

Model No. 02835—Serial No. 40000000 and Up



# Ordering Replacement Parts

To order replacement parts, please supply the part number, the quantity, and the description of each part desired.

## Understanding Reference Numbers

Each identified part in an illustration has a reference number. The reference number for a part also appears in the parts list, along with other information about the part.

This catalog uses two special reference number formats, one to indicate parts in a service assembly and another to indicate the quantity of a given part in an illustration.

## Service Assembly Reference Numbers

Parts in service assemblies have reference numbers in the form a:b. The a represents the reference number of the entire service assembly and the b represents a sequential number unique to each part within the service assembly.

For example, a wheel assembly might be identified by reference number 6, the tire by 6:1, the valve by 6:2, and the wheel by 6:3. When you order the assembly identified by reference number 6, you receive all parts identified by reference numbers 6:1, 6:2, and 6:3. However, you may also order any part individually. Reference numbers of this type appear in illustration and in parts lists.

## Reference Numbers Indicating Quantity

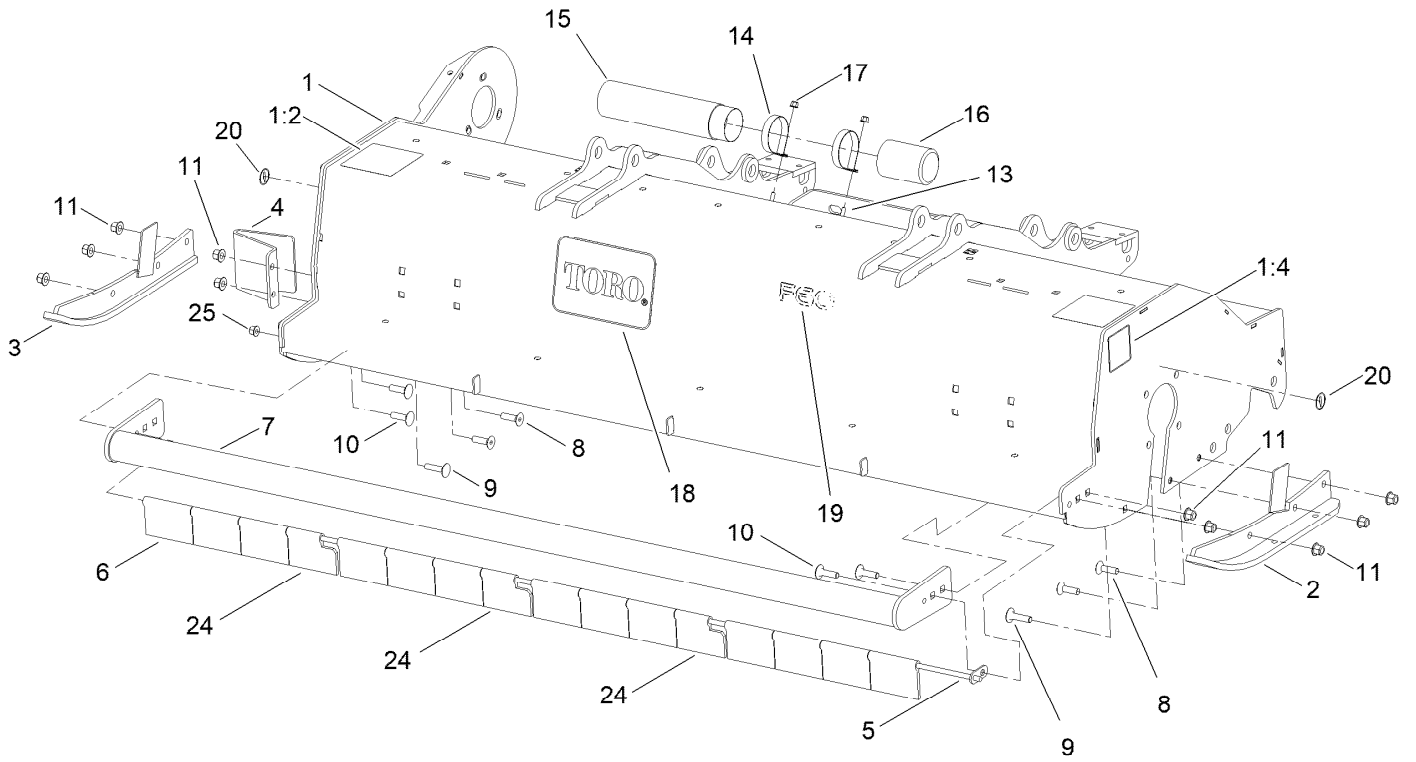
In an illustration, if a reference number indicates more than one part, the reference number has the form nX y. The n represents the quantity of the part, the X is the multiplication symbol, and the y represents the reference number.

For example, in an illustration, the reference number 2X 37 means that two of the parts identified by reference number 37 are indicated.

# Contents

Frame Assembly .....	4
Debris Skirt Assembly .....	6
Rotor Assembly .....	8
Front Caster Wheel Assembly .....	10
Roller Assembly .....	12
Gearbox and Belt Drive Assembly .....	14
Lift Arm Assembly .....	16
Attachments and Accessories .....	18

# Frame Assembly

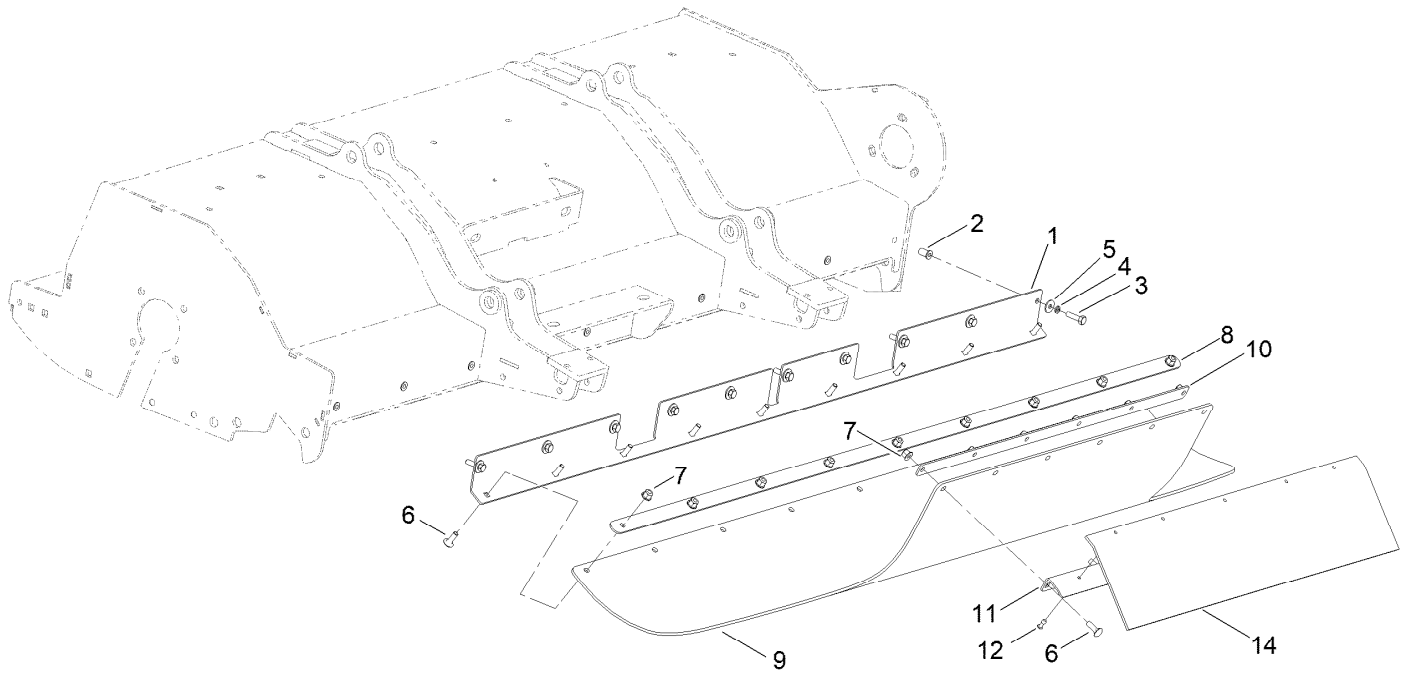


## Frame Assembly (continued)

<i>Ref.</i>	<i>Part Number</i>	<i>Qty.</i>	<i>Description</i>	<i>Ref.</i>	<i>Part Number</i>	<i>Qty.</i>	<i>Description</i>
1	134-1744	1	Frame ASM	9	111-9327	2	Bolt-Carriage
1:2	120-6604	2	Decal-Danger	10	09738	6	Bolt-Carriage
1:3	117-4979	1	Decal-Warning ●	11	134-3763	12	Nut-Flange, NI
1:4	111-9648	1	Decal	13	09668	2	Bolt-Coach
1:5	93-9084	2	Decal-Point, Lift ●	14	107-1865	2	R-Clamp
1:6	93-6697	1	Decal-Lube ●	15	104-7050	1	Tube-Manual
1:7	133-8061	1	Decal-Warning ●	16	104-7048	1	Cap-Housing
2	134-4668-03	1	Skid ASM LH	17	134-3761	2	Nut-Flange, NI
3	134-4669-03	1	Skid ASM RH	18	111-3728	1	Decal
4	134-2788	1	Bracket-Deflector	19	134-3695	1	Decal - F60
5	134-6697	1	Bar-Front Flap ASM	20	58-6520	2	Decal-Grease
6	134-1615	13	Flap-Front	24	134-5182	3	Flap-Front
7	111-9919-03	1	Tube ASM	25	134-3762	1	Nut-Flange, NI
8	134-4839	4	Screw-Sh, Csk				

● Not illustrated

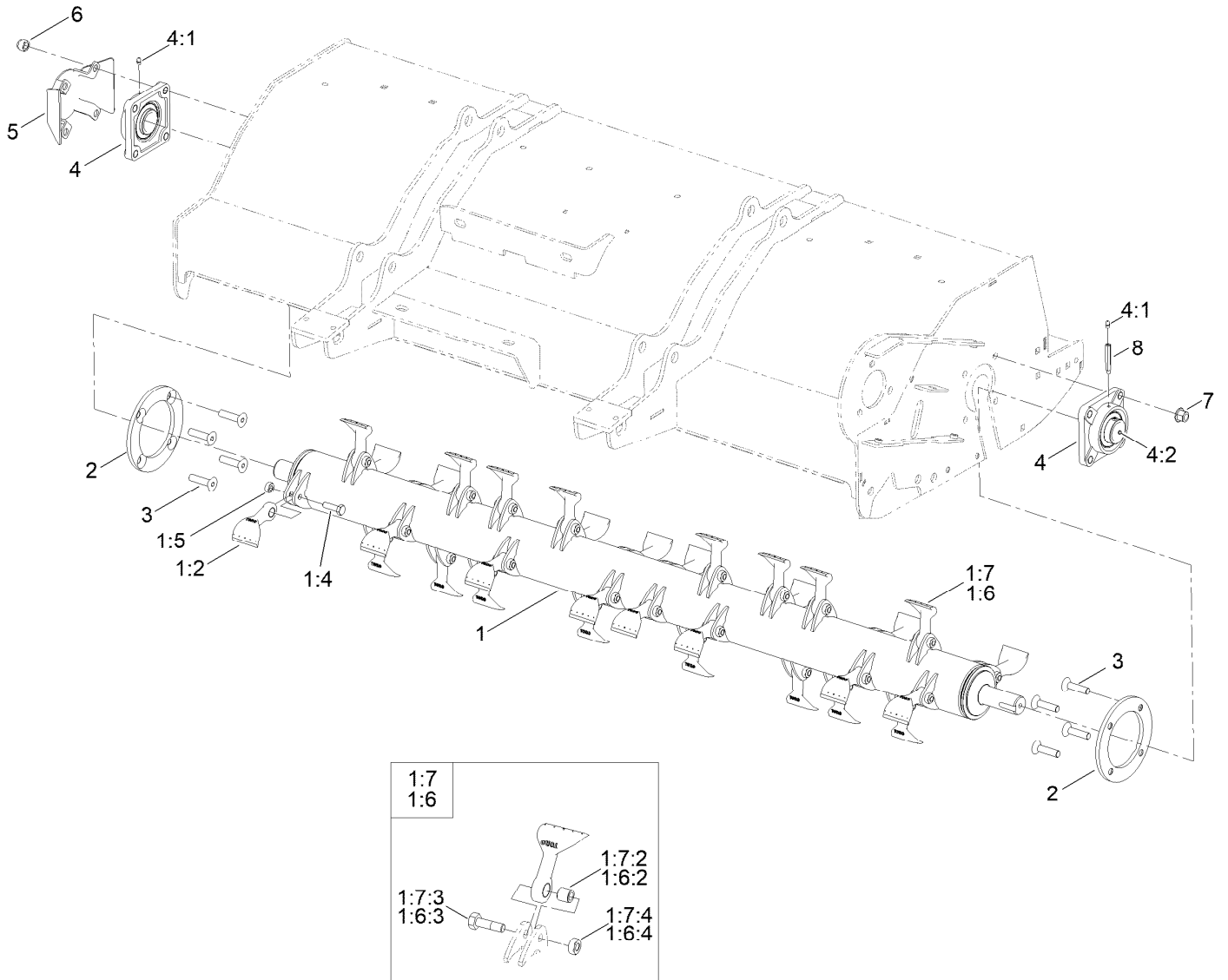
# Debris Skirt Assembly



## Debris Skirt Assembly (continued)

<i>Ref.</i>	<i>Part Number</i>	<i>Qty.</i>	<i>Description</i>	<i>Ref.</i>	<i>Part Number</i>	<i>Qty.</i>	<i>Description</i>
1	134-6549-01	1	Bracket-Mount, Debris Skirt	8	134-7274-03	1	Bracket-Clamp, Rubber
2	134-6924	10	Nut-Clinch	9	144-3957	1	Flap-Flail
3	09369	10	Screw-HH	10	144-4067-03	1	Strap-Flap Mount
4	03469	10	Washer-Spring	11	144-3956-03	1	Angle-Flap Mount
5	09267	10	Washer-Plain	12	103-0138	5	Rivet-Pop
6	09373	15	Bolt-Coach	14	140-3054	1	Flap-Rubber, Middle
7	134-3762	15	Nut-Flange, NI				

# Rotor Assembly

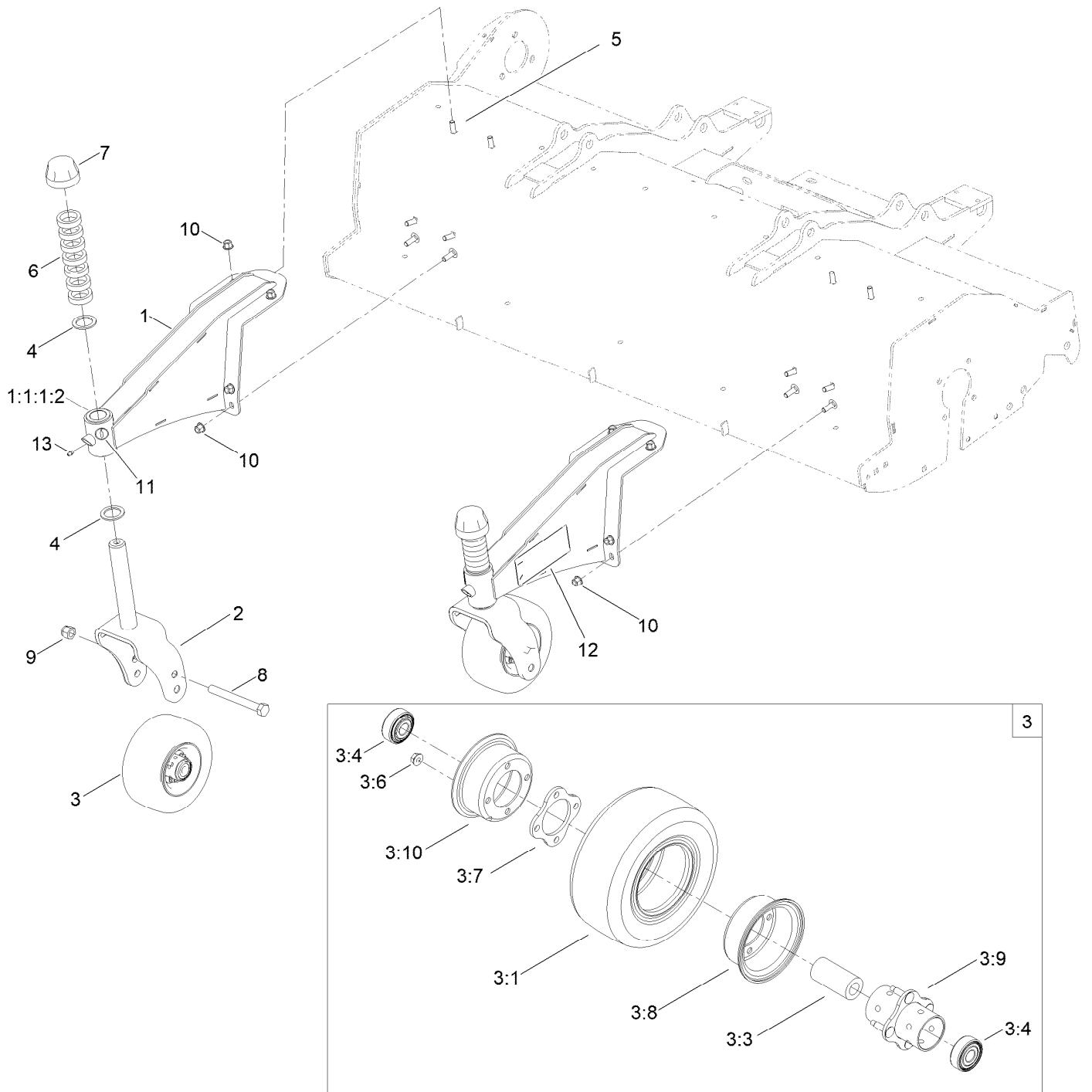




## Rotor Assembly (continued)

<i>Ref.</i>	<i>Part Number</i>	<i>Qty.</i>	<i>Description</i>	<i>Ref.</i>	<i>Part Number</i>	<i>Qty.</i>	<i>Description</i>
1	134-2041	1	Rotor ASM	1:7:4	09449	16	Nut
1:2	111-9172	32	Bushing-Sleeve	2	134-2364-03	2	Clamp-Ring, Rotor
1:4	134-3841	32	Screw-HH	3	134-3706	8	Screw-Csk
1:5	09449	32	Nut	4	134-2193	2	Bearing Unit
1:6	111-9631	1	Kit-Blade(X2)	4:1	111-2561	1	Fitting-Grease
1:6:2	111-9172	2	Bushing-Sleeve	4:2	131-6401	1	Screw-Set
1:6:3	134-3841	2	Screw-HH	5	134-2880	1	Cover-Bearing Unit
1:6:4	09449	2	Nut	6	ZNN1L000U	4	Nut-Nyloc
1:7	111-9668	2	Kit-Blade(X16)	7	134-3764	4	Nut-Flange, NI
1:7:2	111-9172	16	Bushing-Sleeve	8	134-4858	1	Extension, Grease Nipple
1:7:3	134-3841	16	Screw-HH				

# Front Caster Wheel Assembly



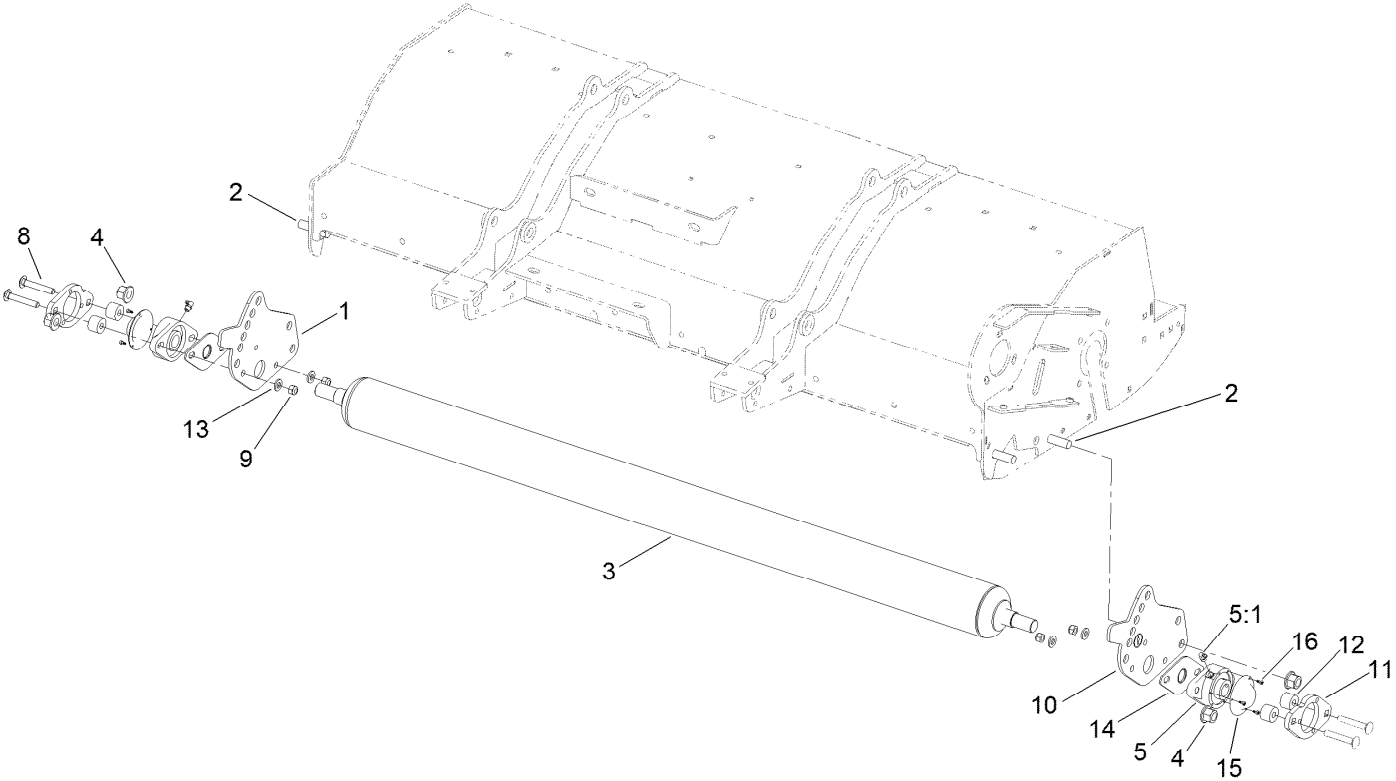
## Front Caster Wheel Assembly (continued)

<i>Ref.</i>	<i>Part Number</i>	<i>Qty.</i>	<i>Description</i>	<i>Ref.</i>	<i>Part Number</i>	<i>Qty.</i>	<i>Description</i>
1	134-2860-01	2	Bracket-Caster Arm ASM [red]	3:8	93-4239	1	Rim-Wheel, Half
1:1		1	Bracket-Caster Arm ASM ●	3:9	93-5980	1	Hub
1:1:1		1	Hub ASM ●■	3:10	95-2741	1	Rim-Wheel, Half
1:1:1:2	69-6470	2	Bushing-Caster	4	69-6860	4	Washer-Thrust
2	137-2546-01	2	Fork-Caster	5	33125-030	12	Screw-CARR
3	93-9938	2	Wheel ASM	6	69-1510	14	Spacer
3:1	93-9939	1	Tire	7	92-9727	2	HOC Cap ASM
3:2	68-8950	1	Tube-Inner (W/Valve) ●	8	327-24	2	Screw-HH
3:3	93-4241	1	Spacer-Bearing, Inner	9	3296-53	2	Nut-Lock, NI
3:4	120-3366	2	Bearing	10	134-3763	12	Nut-Flange, NI
3:6	32128-16	4	Nut-HHF	11	58-6520	2	Decal-Grease
3:7	93-4242	1	Plate	12	134-5119	2	Decal-HOC
				13	302-5	2	Fitting-Grease

● Not illustrated

■ Not serviced separately

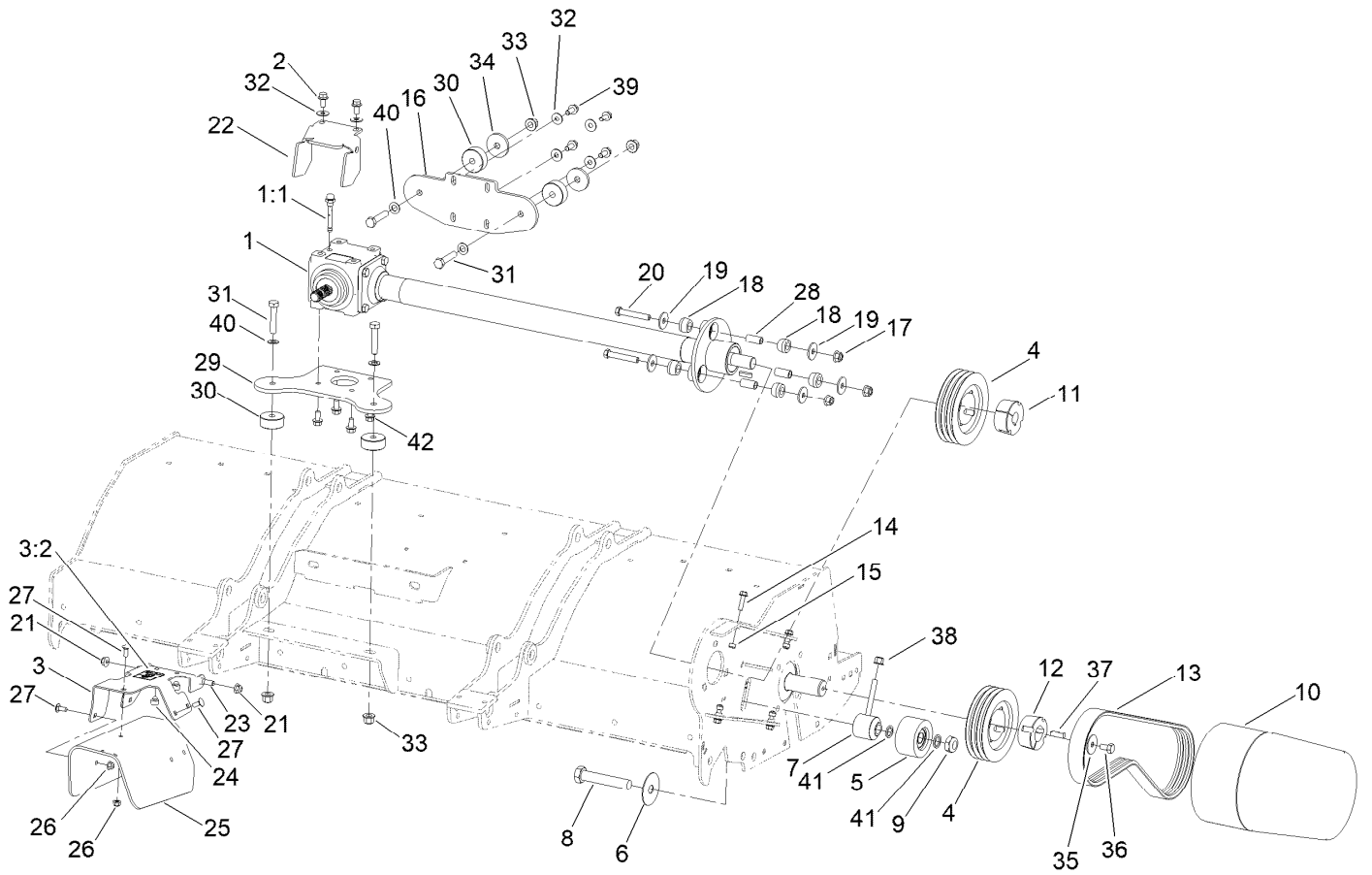
# Roller Assembly



## Roller Assembly (continued)

<i>Ref.</i>	<i>Part Number</i>	<i>Qty.</i>	<i>Description</i>	<i>Ref.</i>	<i>Part Number</i>	<i>Qty.</i>	<i>Description</i>
1	134-5070-01	2	Plate-HOC, Adjuster	10	58-6520	2	Decal-Grease
2	134-3760	4	Screw-HHF	11	134-6076	2	Bracket-Cover, Bearing
3	134-2875	1	Roller-4" ASM	12	134-6091	4	Spacer
4	134-3765	4	Nut-Flange, NI	13	87-7480	4	Washer
5	140-7023	2	Bearing-Flange, 2 Bolt	14	134-6404	2	Plate-Shim
5:1	302-33	1	Fitting-Grease	15	140-7004	2	Cover-Bearing
8	3232-17	4	Screw-CARR	16	140-7030	6	Screw-Cover
9	3296-76	4	Nut-Lock, NI				

# Gearbox and Belt Drive Assembly

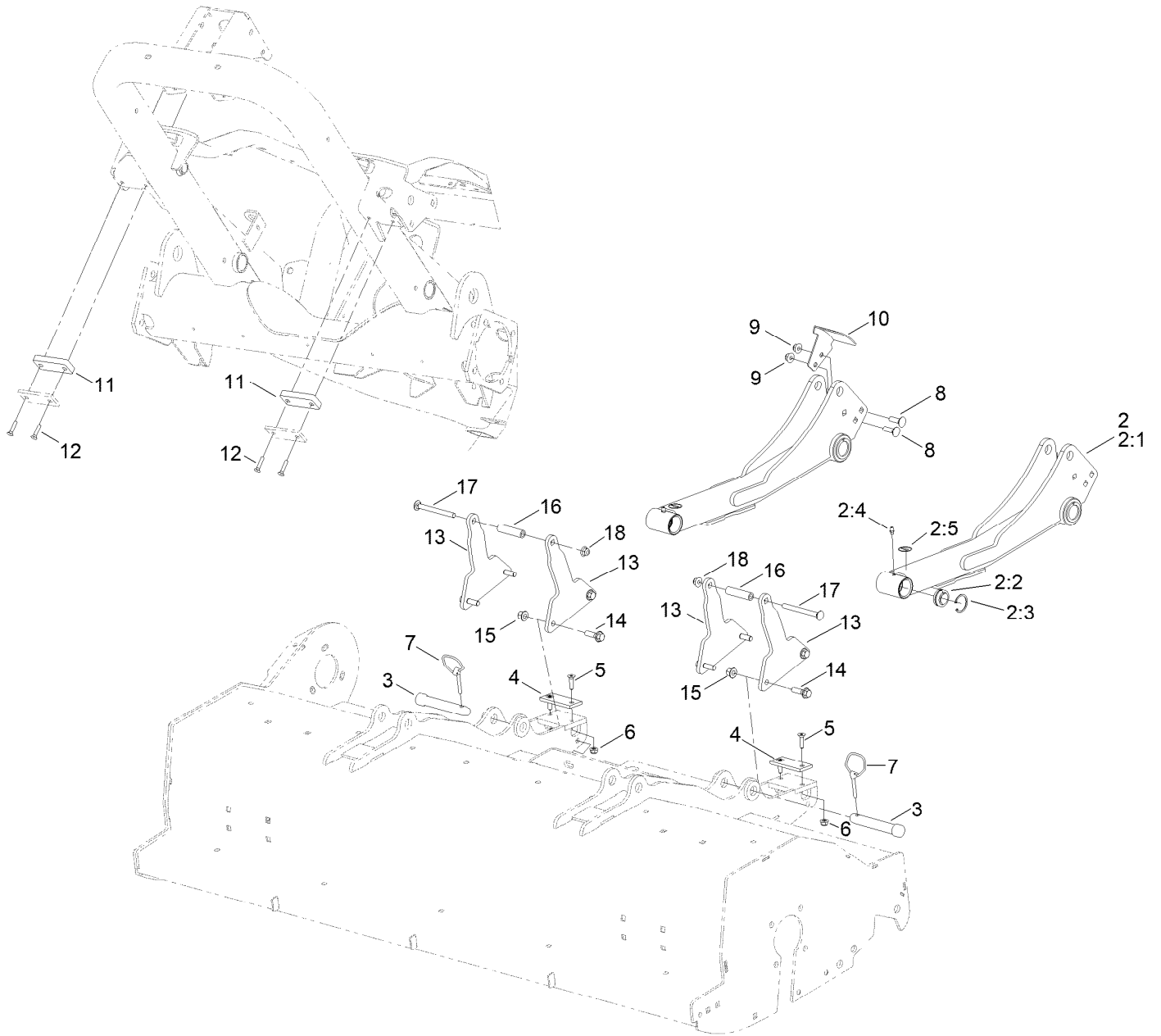


## Gearbox and Belt Drive Assembly (continued)

<i>Ref.</i>	<i>Part Number</i>	<i>Qty.</i>	<i>Description</i>	<i>Ref.</i>	<i>Part Number</i>	<i>Qty.</i>	<i>Description</i>
1	134-7849	1	Gearbox ASM	22	134-6276-03	1	Bracket-Mount, PTO Guard
1:1	134-7535	1	Gearbox ASM	23	614672	2	Screw-Shoulder, HWH
2	139-6300	2	Screw-Hfl	24	107-8042	2	Bumper-Rubber
3	134-7706	1	Bracket-PTO Guard	25	139-6346	1	Shield Rubber
3:2	139-6303	1	Decal-Danger, Entanglement	26	104-8300	5	Nut-HF, NI
4	134-6009	2	Pulley	27	3230-23	5	Bolt-CARR
5	134-6011	1	Pulley-Idler	28	87-3600	3	Spacer-Absorber, Shock
6	134-3159	1	Washer-Large	29	134-5133-01	1	Plate-Mount, Gearbox
7	134-2802	1	Spacer-Tensioning ASM	30	134-5136	4	Spacer
8	134-2599	1	Screw-HH	31	66-11-002	4	Screw-HH
9	134-6647	1	Nut-Nyloc	32	HY03355	6	Washer-Plated
10	134-3633-03	1	Cover-Belt Drive	33	134-3764	4	Nut-Flange, NI
11	134-2772	1	Bushing-Tapered	34	134-5138	2	Spacer
12	134-2773	1	Bushing-Tapered	35	134-4859	1	Washer-Plain
13	134-6010	1	Belt-V, Banded	36	09391	1	Screw-HH
14	134-3748	4	Screw-HHF	37	134-4856	1	Key
15	09441	4	Nut-Hex, NI	38	134-3763	1	Nut-Flange, NI
16	134-5137-01	1	Plate-Mount, Gearbox	39	3234-25	4	Screw-HHF
17	114-8417	3	Nut-HF, NI	40	ZWP1L000U	4	Washer-Plain
18	87-3920	6	Bushing	41	134-6648	2	Spacer
19	87-5330	6	Washer	42	3234-1	4	Screw-HHF
20	324-11	3	Screw-HH	99	131-8591	2	Screw-HSH ●
21	104-8301	2	Nut-HF, NI	99	32128-36	2	Nut-HF ●
				99	80-6990	2	Washer-Hardened ●

● Not illustrated

# Lift Arm Assembly





## Lift Arm Assembly (continued)

<i>Ref.</i>	<i>Part Number</i>	<i>Qty.</i>	<i>Description</i>	<i>Ref.</i>	<i>Part Number</i>	<i>Qty.</i>	<i>Description</i>
2	134-4885	2	Lift Arm ASM	9	104-8301	2	Nut-HF, NI
2:1	134-7055-03	1	Lift Arm ASM [black]	10	134-6324-03	1	Bracket-Sensor Mount [black]
2:2	105-7441	1	Bearing-Spherical	11	134-6429-03	2	Plate-Stop, Lift Arm
2:3	32151-34	1	Ring-Retaining	12	134-7476	4	Screw-FH
2:4	302-5	1	Fitting-Grease	13	134-6796-03	4	Bracket-Lift Arm Stop
2:5	58-6520	1	Decal-Grease	14	134-3753	8	Screw-HHF
3	134-6652	2	Pin-Lift Arm	15	134-3763	8	Nut-Flange, NI
4	138-4452	2	Pad-Stop, Deck	16	134-6953	2	Spacer-Lift Arm Stop
5	133-4543	4	Screw	17	135-0313	2	Screw-CARR
6	104-8300	4	Nut-HF, NI	18	104-8301	2	Nut-HF, NI
7	10-07-012	2	Pin 1/4" Lynch	99	104-8301	4	Nut-HF, NI ●
8	3231-25	2	Bolt-CARR				

● Not illustrated

# Attachments and Accessories

## For 02835 F60 Flail Mower Groundsmaster 3300 Series All-Wheel Drive Traction Unit

<b>Product Name</b>	<b>Model/Part</b>
Premium All Purpose Grease (Tube) .....	108-1190
Premium All Season Gear Lube (Quart) .....	108-1590
Kit - Back To Back Flails, x16 .....	134-3388
Shredder Bar Kit .....	134-4194
Fine Cut Baffle Kit .....	134-4195
Kit - Back To Back Flails, x2 .....	134-4852

**Notes:**



**Count on it.**