



ROPS Kit
TimeCutter® Riding Mower
 Model No. 79485—Serial No. 40000000 and Up

Installation Instructions

Store this document with the *Operator's Manual* for the traction unit.

Safety

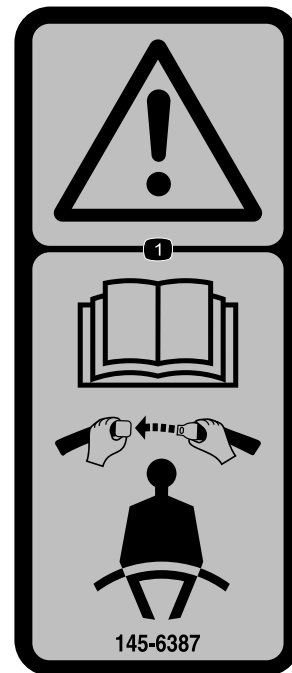
Rollover Protection System (ROPS) Safety

- The ROPS is an integral safety device. Do not remove any of the ROPS components from the machine.
- Ensure that the seat belt is attached and that you can release it quickly in an emergency.
- Always wear your seat belt when the roll bar is installed.
- Check carefully for overhead objects before you drive under them, and do not contact them.
- Keep the roll bar in safe operating condition by thoroughly inspecting it periodically for damage and keeping all the mounting fasteners tight.
- Replace damaged ROPS components. Do not repair or alter them.
- Wheels dropping over edges, over steep banks, or into water can cause a rollover, which may result in serious injury or death.
- Do not wear the seat belt when the roll bar is not installed.
- In the event of a rollover, take the machine to an Authorized Service Dealer to inspect the ROPS.
- Use only Toro approved accessories and attachments for the ROPS.

Safety and Instructional Decals



Safety decals and instructions are easily visible to the operator and are located near any area of potential danger. Replace any decal that is damaged or missing.



145-6387

decal145-6387

1. Warning—Read the *Operator's Manual* and wear a seat belt.



Installation

Loose Parts

Use the chart below to verify that all parts have been shipped.

Procedure	Description	Qty.	Use
1	No parts required	–	Prepare the machine.
2	Left ROPS mount Right ROPS mount Bolt (1/2 x 1-1/4 inches) Large washer Locknut (1/2 inch) Belt guard panel Rear guard panel Cable tie Narrow push rivet Wide push rivet	1 1 6 6 6 2 1 2 4 2	Install the ROPS mounts and guard panels.
3	Left seat belt bracket (MyRide machines only) Right seat belt bracket (MyRide machines only) Partial-thread bolt (3/8 x 2 inches) Small washer Locknut (3/8 inch) Left pod bracket Bumper Right pod bracket (MyRide machines only) Thread-forming screw (5/16 x 3/4 inch) Seat belt tongue assembly Seat belt buckle assembly Carriage screw (7/16 x 1 inch) Locknut (7/16 inch)	1 1 2 2 2 1 1 1 1 3 1 1 2 2	Install the pod brackets and seat belt brackets (MyRide-equipped machines only).
4	Seat belt tongue assembly Seat belt buckle assembly Carriage screw (7/16 x 1 inch) Locknut (7/16 inch) Seat belt bracket (machines without MyRide only) Bolt (3/8 x 1 inch) Locknut (3/8 inch) Left pod bracket Bumper Right pod bracket (machines without MyRide only) Thread-forming screw (5/16 x 3/4 inch)	1 1 2 2 2 4 4 1 1 1 1 4	Install the pod brackets and seat belt brackets (machines without MyRide only).

Procedure	Description	Qty.	Use
5	ROPS tube Bolt (3/8 x 2-1/2 inches) Locknut (3/8 inch) Suitcase weight (For machines with a bagger installed only) Bolt (3/8 x 3-3/4 inches)	1 2 2 4 2	Complete the installation.

1

Preparing the Machine

No Parts Required

Procedure

Note: Determine the left and right sides of the machine from the normal operating position.

Note: You may discard all removed parts unless otherwise noted.

1. Park the machine on a level surface.
2. Disengage the blade-control switch.
3. Move the motion-control levers outward to the NEUTRAL-LOCK position to engage the parking brake.
4. Shut off the engine and remove the key.
5. Raise the seat, refer to your machine *Operator's Manual*.
6. Raise the rear of the machine on jack stands; refer to your machine *Operator's Manual*.

⚠ WARNING

Supporting the machine on the lower muffler shield (Figure 1) may damage the shield and cause the machine to fall, injuring you or bystanders.

Do not use the lower muffler shield to support the machine.

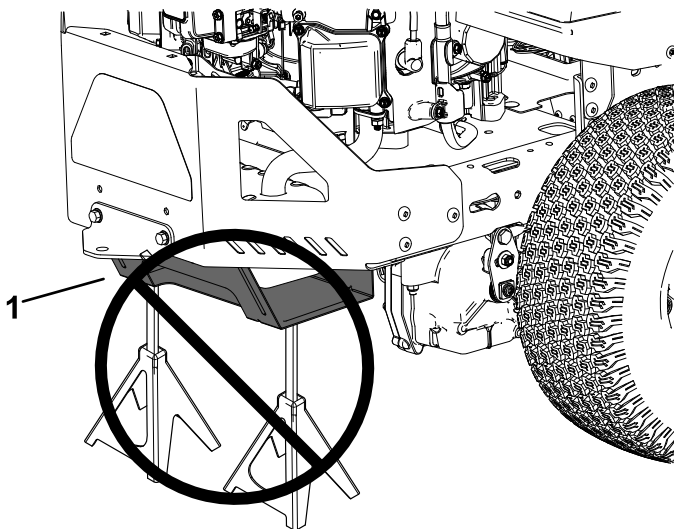


Figure 1

g299647

1. Lower muffler shield

7. Remove the rear tires as shown in Figure 2

Note: Retain all wheel components for later installation.

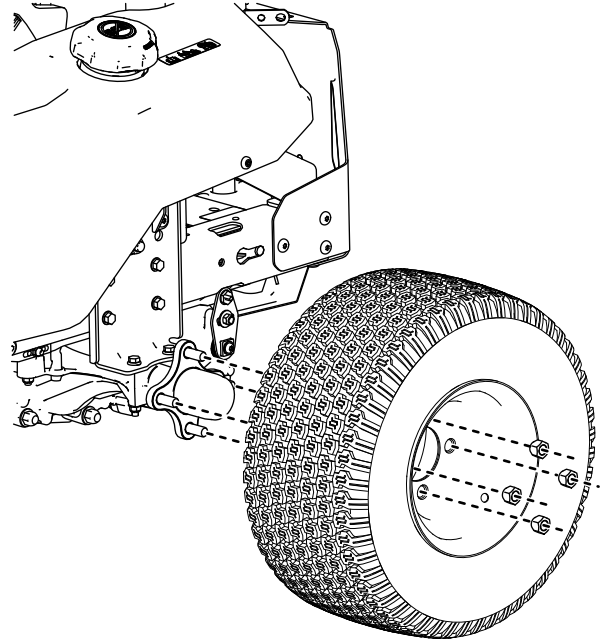
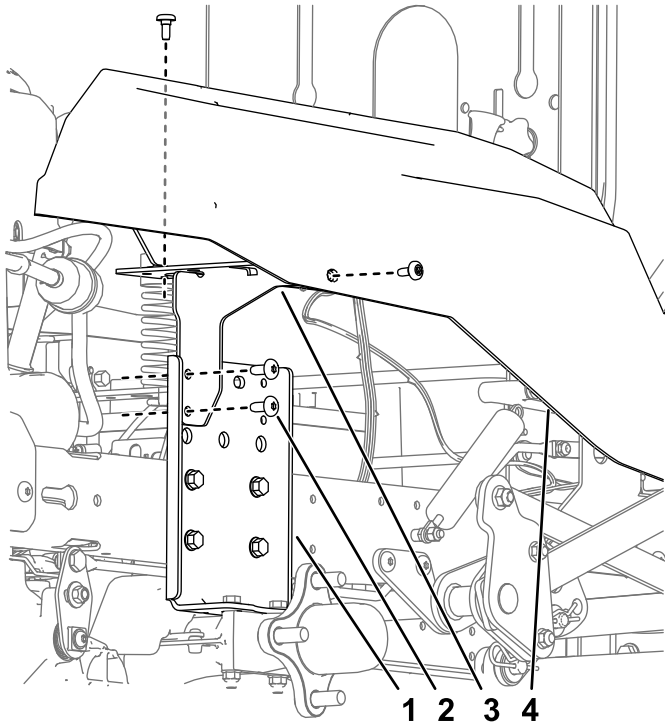


Figure 2

g309984

8. Remove the pod brackets from the machine (Figure 3).

Note: Retain the shoulder screws removed from the sides of the pods for later installation.

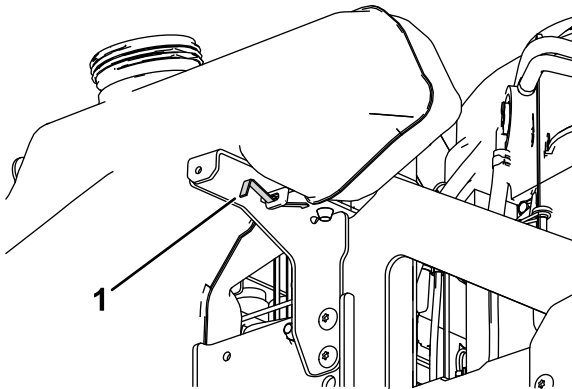


g310040

Figure 3

- | | |
|--------------------------|------------------------|
| 1. Hydraulic mount plate | 3. Pod support bracket |
| 2. Screw | 4. Pod |

Note: Retain the fuel tank spring that secures the fuel tank to the left pod bracket for later installation.



g310231

Figure 4

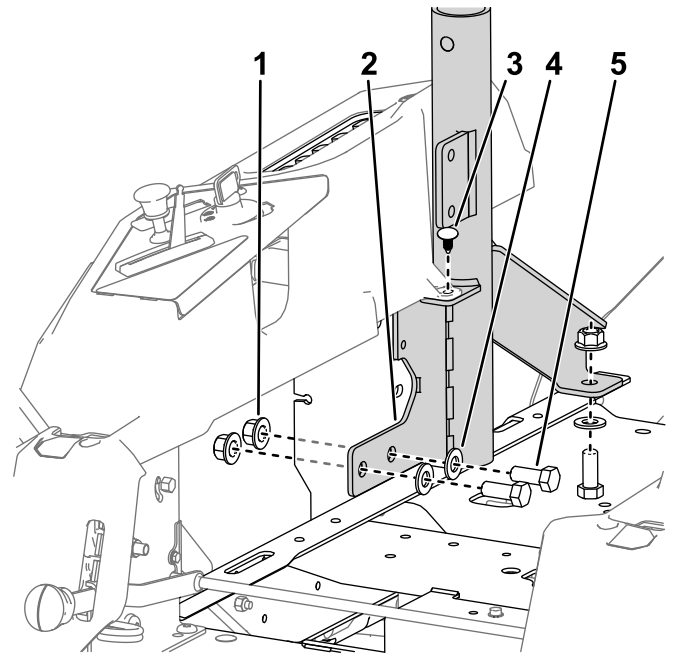
1. Fuel tank spring

2

Installing the ROPS Mounts and Guard Panels

Parts needed for this procedure:

1	Left ROPS mount
1	Right ROPS mount
6	Bolt (1/2 x 1-1/4 inches)
6	Large washer
6	Locknut (1/2 inch)
2	Belt guard panel
1	Rear guard panel
2	Cable tie
4	Narrow push rivet
2	Wide push rivet



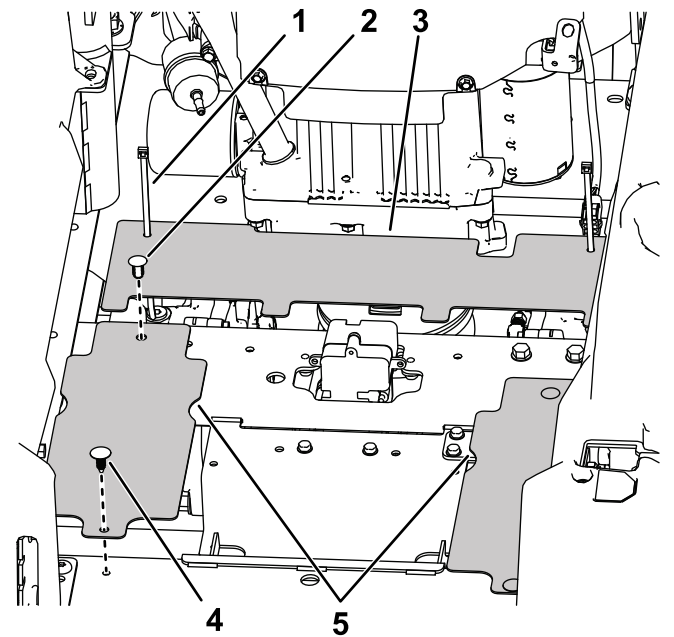
g316031

Figure 5
Right side shown

1. Locknut (1/2 inch)
2. Right ROPS mount
3. Narrow push rivet
4. Large washer
5. Bolt (1/2 x 1-1/4 inches)

Procedure

1. Install the ROPS mounts to the machine frame behind the hydraulic mount plate as shown in [Figure 5](#).
2. Torque the bolts to 91 to 113 N·m (67 to 83 ft-lb).
3. Secure the tabs on the pods to the ROPS mount with narrow push rivets ([Figure 5](#)).
4. Install the teeth of the rear guard panel to the notches in the center frame and secure it with cable ties as shown in [Figure 6](#).
5. Install the belt guard panels to the frame with push rivets as shown in [Figure 6](#).



g310120

Figure 6

1. Cable tie
2. Wide push rivet
3. Rear guard panel
4. Narrow push rivet
5. Belt guard panels

3

Installing the Pod Brackets and Seat Belt

MyRide-Equipped Machines Only

Parts needed for this procedure:

1	Left seat belt bracket (MyRide machines only)
1	Right seat belt bracket (MyRide machines only)
2	Partial-thread bolt (3/8 x 2 inches)
2	Small washer
2	Locknut (3/8 inch)
1	Left pod bracket
1	Bumper
1	Right pod bracket (MyRide machines only)
3	Thread-forming screw (5/16 x 3/4 inch)
1	Seat belt tongue assembly
1	Seat belt buckle assembly
2	Carriage screw (7/16 x 1 inch)
2	Locknut (7/16 inch)

Procedure

1. Install the seat belt brackets to the seat platform with 2 partial-thread bolts (3/8 x 2 inches), 2 small washers, and 2 locknuts (3/8 inch) as shown in [Figure 7](#).

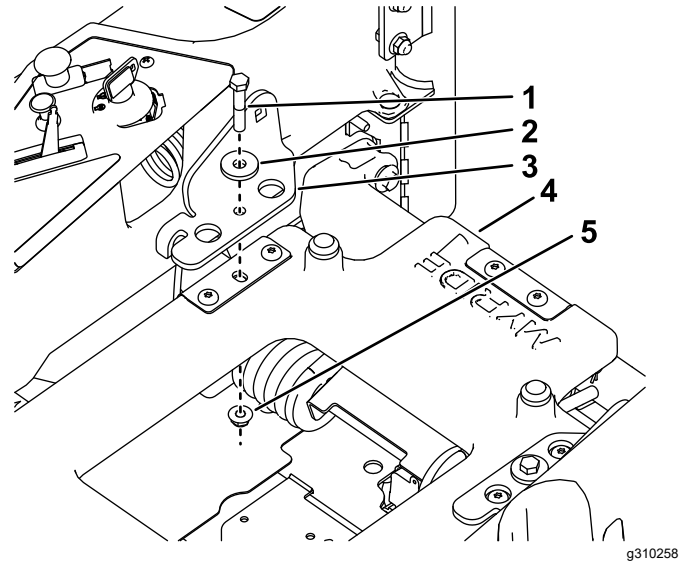


Figure 7

1. Partial-thread bolts (3/8 x 2 inches)
2. Small washer
3. Seat belt bracket
4. MyRide platform
5. Locknut (3/8 inch)

2. Install the bumper to the left pod bracket ([Figure 8](#)).

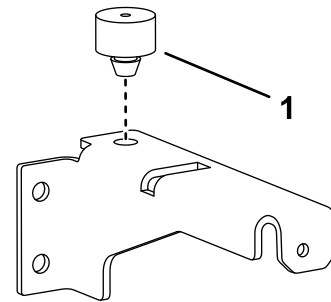


Figure 8

1. Bumper

3. Install the left pod bracket to the machine frame using 2 thread-forming screws (5/16 x 3/4 inch) and the parts removed in [1 Preparing the Machine \(page 4\)](#) as shown in [Figure 9](#).

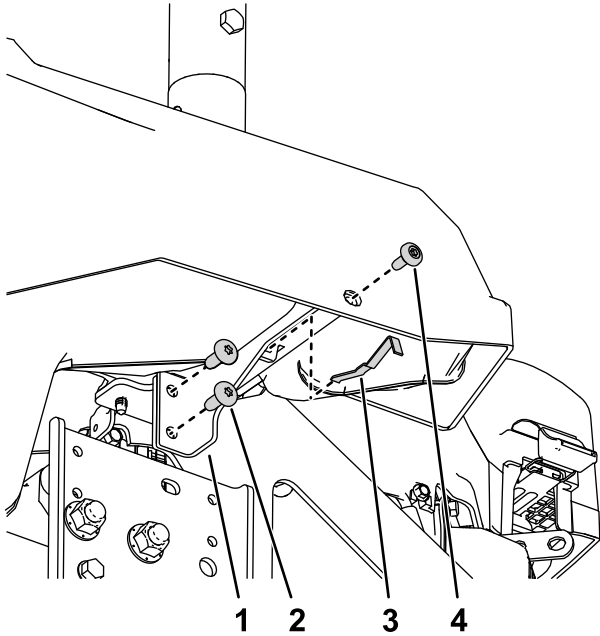


Figure 9

g310244

- | | |
|---|---------------------|
| 1. Left pod bracket | 3. Fuel-tank spring |
| 2. Thread-forming screw (5/16 x 3/4 inch) | 4. Shoulder bolt |

4. Install new right pod bracket to the machine using a thread-forming screw (5/16 x 3/4 inch) and the shoulder bolt removed in [1 Preparing the Machine \(page 4\)](#).

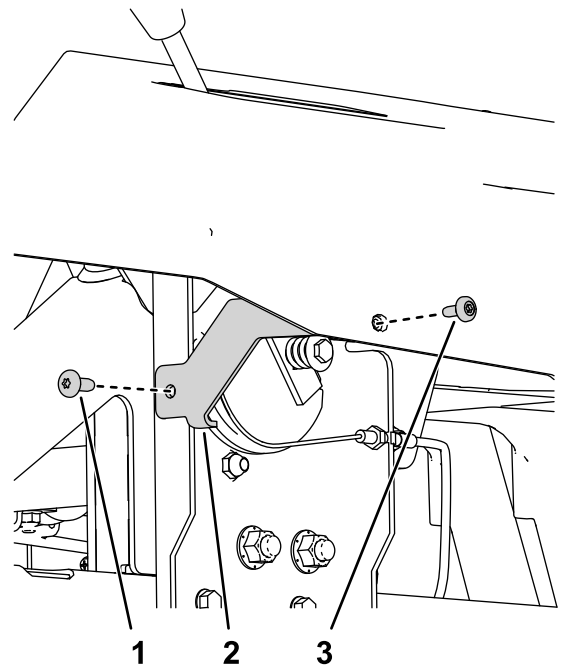


Figure 10

g310256

- | | |
|---|------------------|
| 1. Thread-forming screw (5/16 x 3/4 inch) | 3. Shoulder bolt |
| 2. Right pod bracket | |

5. Install the seat belt buckle and tongue to the inside of the seat belt brackets with 2 carriage screws (7/16 x 1 inch) and 2 locknuts (7/16 inch) as shown in [Figure 11](#).

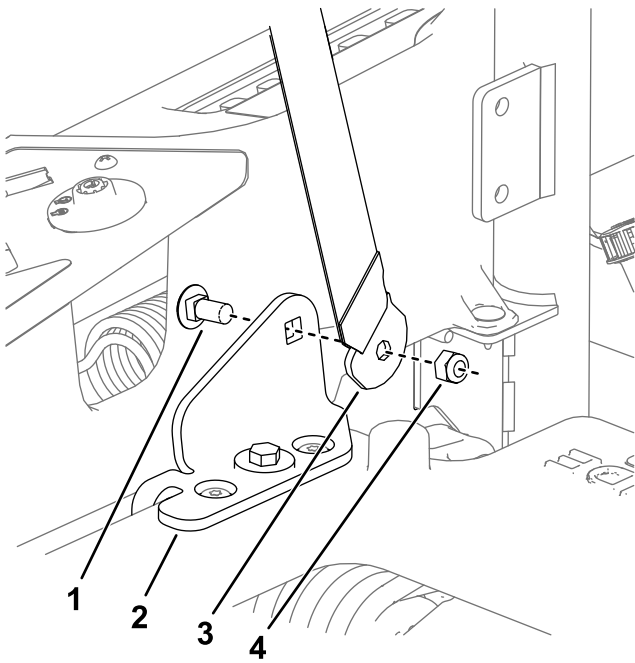
4

Installing the Pod Brackets and Seat Belt

Machines without MyRide Only

Parts needed for this procedure:

1	Seat belt tongue assembly
1	Seat belt buckle assembly
2	Carriage screw (7/16 x 1 inch)
2	Locknut (7/16 inch)
2	Seat belt bracket (machines without MyRide only)
4	Bolt (3/8 x 1 inch)
4	Locknut (3/8 inch)
1	Left pod bracket
1	Bumper
1	Right pod bracket (machines without MyRide only)
4	Thread-forming screw (5/16 x 3/4 inch)



g316063

Figure 11

1. Carriage screws (7/16 x 1 inch)
2. Seat belt bracket
3. Seat belt tongue assembly (bracket bent toward the seat)
4. Locknut (7/16 x 1 inch)

Procedure

1. Install the seat belt buckle and tongue to the inside of the seat belt brackets with 2 carriage screws (7/16 x 1 inch) and 2 locknuts (7/16 inch) as shown in [Figure 12](#).

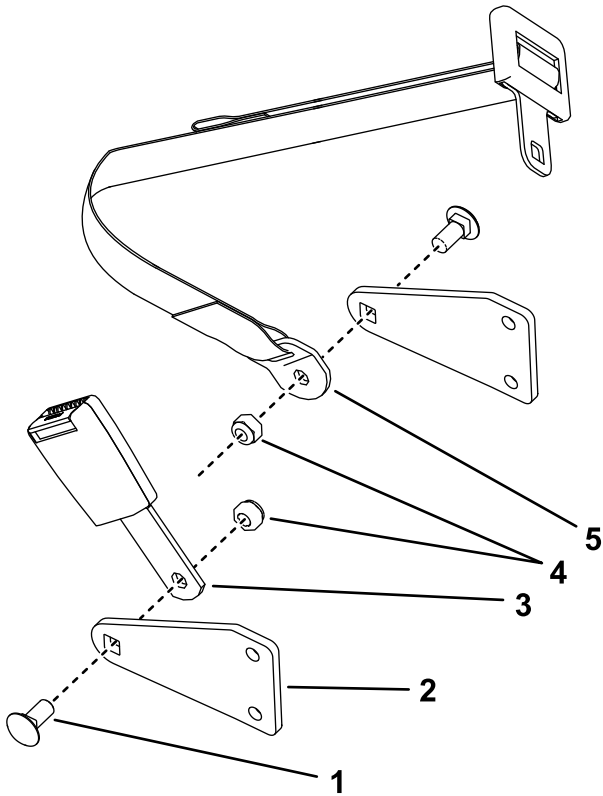


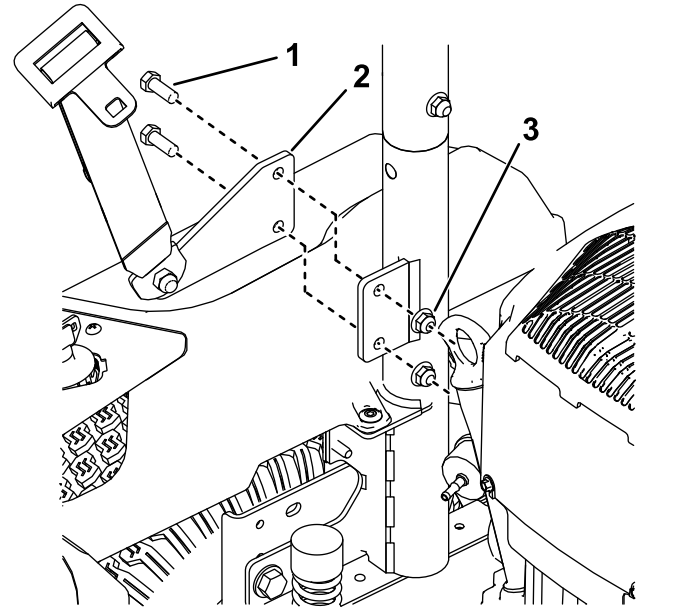
Figure 12

g316016

- | | |
|-----------------------------------|-------------------------|
| 1. Carriage screw (7/16 x 1 inch) | 4. Locknuts (7/16 inch) |
| 2. Seat belt bracket | 5. Tongue assembly |
| 3. Buckle | |

2. Install the seat belt brackets to the outside of the ROPS mounts ([Figure 13](#)).

Note: Install the seat belt buckle assembly with the bent bracket toward the seat.



g316030

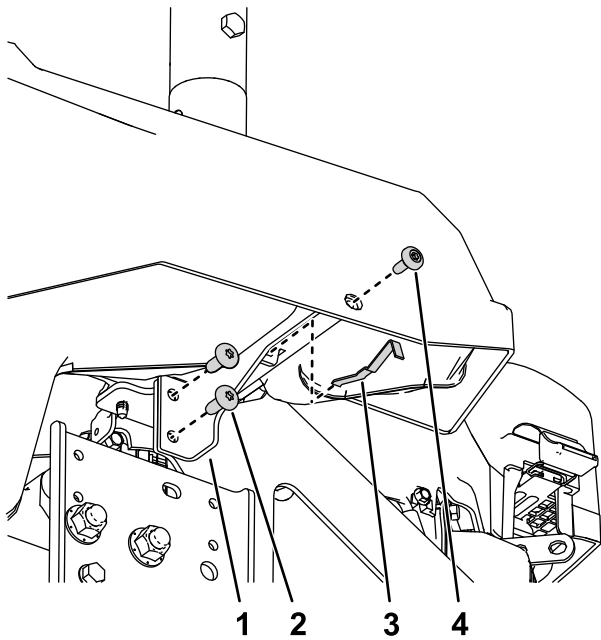
Figure 13

Right side shown

- | | |
|------------------------|-----------------------|
| 1. Bolt (3/8 x 1 inch) | 3. Locknut (3/8 inch) |
| 2. Seat belt bracket | |

3. Install the right pod bracket to the machine frame using 2 thread-forming screws (5/16 x 3/4 inch) and the parts removed in [1 Preparing the Machine \(page 4\)](#) as shown in [Figure 3](#).
4. Install the bumper to the left pod bracket ([Figure 8](#)).

5. Install the left pod bracket to the machine frame using 2 thread-forming screws (5/16 x 3/4 inch) as shown in [Figure 13](#).



g310244

Figure 14

- | | |
|--|---------------------|
| 1. Left pod bracket | 3. Fuel-tank spring |
| 2. Thread-forming screw
(5/16 x 3/4 inch) | 4. Shoulder bolt |

5

Completing the Installation

Parts needed for this procedure:

1	ROPS tube
2	Bolt (3/8 x 2-1/2 inches)
2	Locknut (3/8 inch)
4	Suitcase weight (For machines with a bagger installed only)
2	Bolt (3/8 x 3-3/4 inches)

Procedure

1. Install the rear tires as shown in [Figure 2](#).
2. Lower the machine; refer to your machine *Operator's Manual*.
3. Lower the seat.
4. With the ROPS tube angle toward the rear of the machine, install the ROPS tube to the ROPS mounts with 2 bolts (3/8 x 2-1/2 inches) and 2 locknuts (3/8 inch) as shown in [Figure 15](#).
5. **For machines with a bagger installed only:** Install the included additional suitcase weights to the machine using 2 bolts (3/8 x 3-3/4 inches) as necessary according to the table below ([Figure 16](#)).

Type of Deck	Total Weights Required
42-inch stamped deck	11
42-inch fabricated deck	10
50-inch fabricated deck	8
54-inch fabricated deck	6
60-inch fabricated deck	6

Note: The weight brackets will hold up to 8 suitcase weights between the front edge of the bracket and the machine; any additional weights must be mounted to the front of the weight brackets.

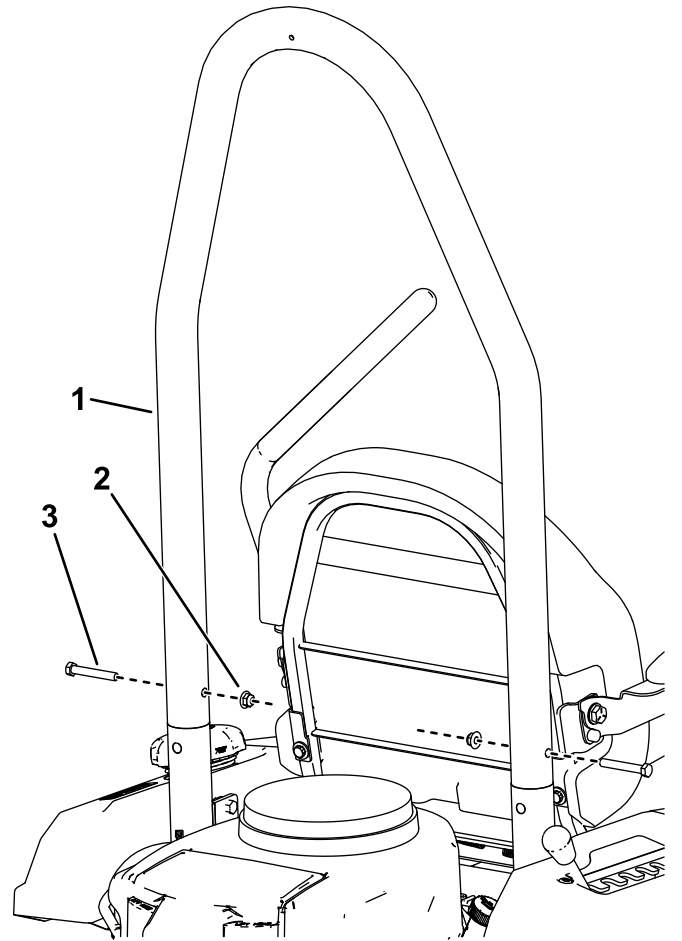


Figure 15

1. ROPS tube
2. Locknut (3/8 inch)
3. Bolt (3/8 x 2-1/2 inches)

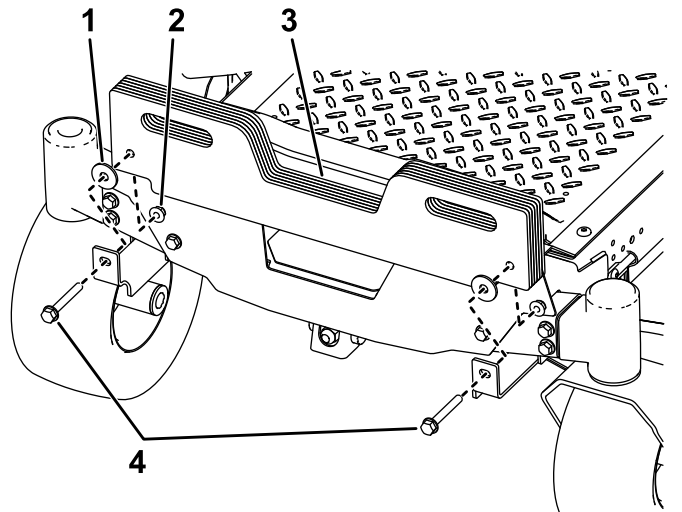


Figure 16

1. Washer
2. Locknut
3. Suitcase weight
4. Bolt (3/8 x 3-3/4 inches)

Maintenance

Checking the Seat Belt

Service Interval: Before each use or daily

Inspect the seat belt for wear, cuts, and proper operation of the retractor and buckle. Replace the seat belt if it is damaged.

Checking the Rollover Protection System (ROPS)

Service Interval: Before each use or daily

Visually inspect the ROPS for loose hardware or any other possible problem. Tighten the hardware or correct the problem before operating.

Notes:

Notes:



Count on it.