



Tiller

Toro[®] Sitework[™] Systems Attachment

Model No. 22445—22000001 and Up

Parts Catalog

Ordering Replacement Parts

To order replacement parts, please supply: the part number, the quantity, and the description of each part desired.

Understanding Reference Numbers

Each identified part in an illustration has a reference number. The reference number for a part also appears in the parts list, along with other information about the part.

This catalog uses two special reference number formats, one to indicate parts in a service assembly and another to indicate the quantity of a given part in an illustration.

Service Assembly Reference Numbers

Parts in service assemblies have reference numbers in the form **a:b**. The **a** represents the reference number of the entire service assembly and the **b** represents a sequential number unique to each part within the service assembly.

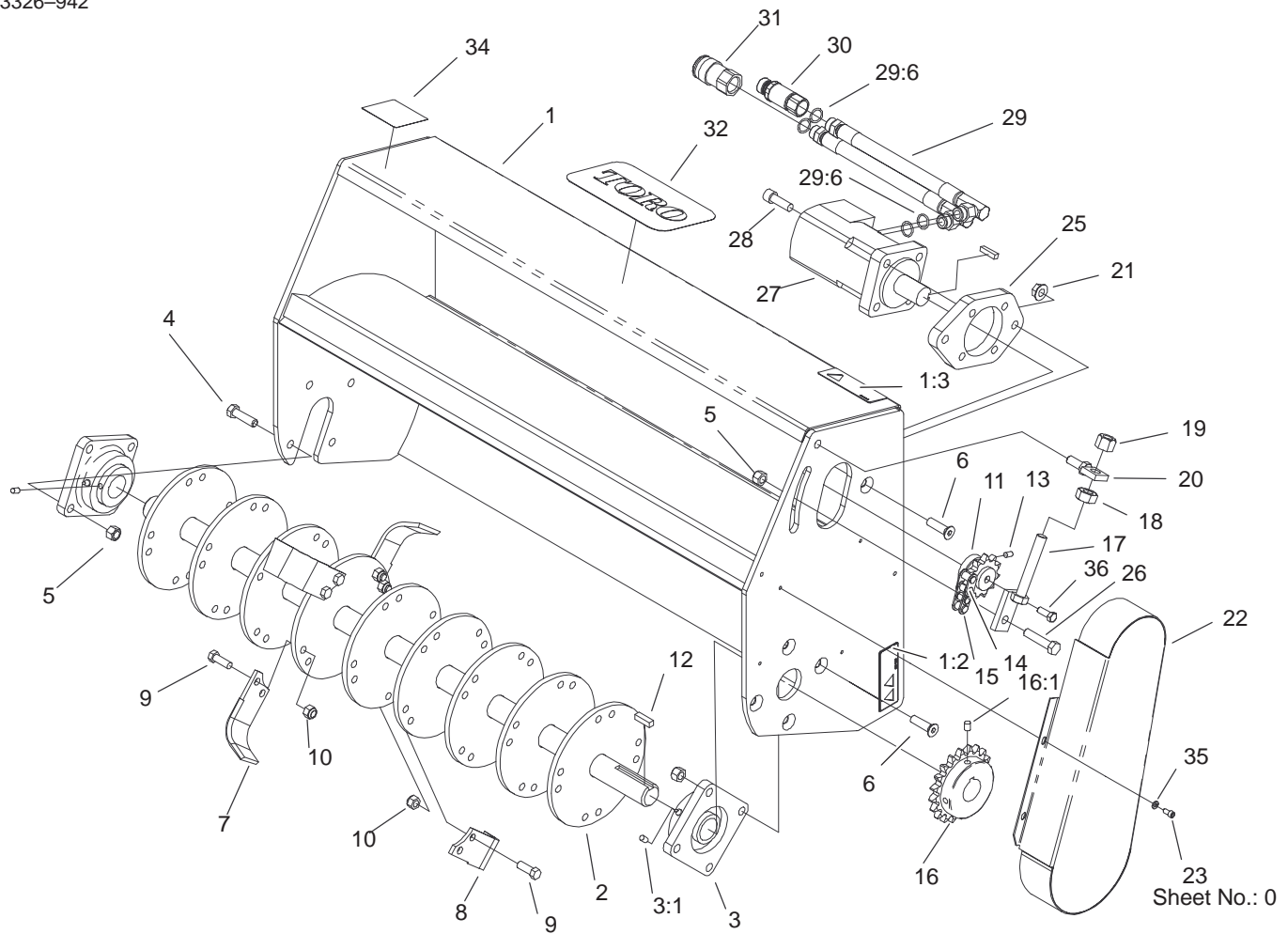
For example, a wheel assembly might be identified by reference number **6**, the tire by **6:1**, the valve by **6:2**, and the wheel by **6:3**. When you order the assembly identified by reference number **6**, you receive all parts identified by reference numbers **6:1**, **6:2**, and **6:3**. However, you may also order any part individually.

Reference numbers of this type appear in illustrations and in part lists.

Reference Numbers Indicating Quantity

In an illustration, if a reference number indicates more than one part, the reference number has the form **nX y**. The **n** represents the quantity of the part, the **X** is the multiplication symbol, and the **y** represents the reference number.

For example, in an illustration, the reference number **2X 37** means that two of the parts identified by reference number **37** are indicated.

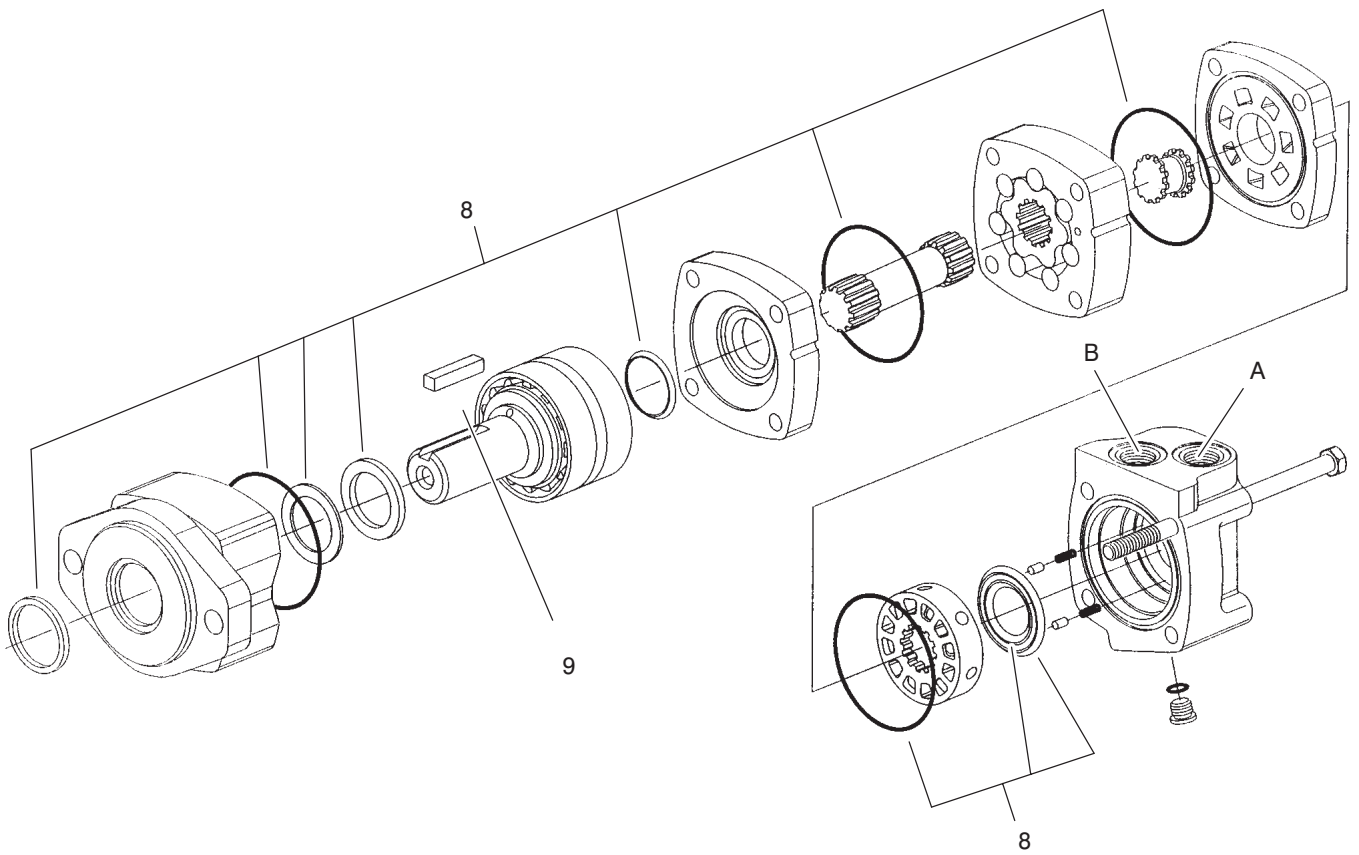


Tiller Assembly

Ref. No.	Part No.	Qty.	Description
1	104-6263	1	Tiller Frame ASM,
1:2	93-7321	2	Decal - Danger
1:3	100-4708	1	Decal-Warning
2	98-9087	1	Shaft - Tine
3	99-9979	2	Bearing ASM
3:1	3246-17	2	Setscrew-HSH
4	325-7	4	Screw-HH
5	3296-23	10	Nut-Lock, NI
6	98-9931	5	Bolt
7	104-2043	18	Tine-RH
8	104-2044	18	Tine-LH
9	324-29	72	Bolt-HH
10	32146-7	72	Nut
11	98-9085	1	Sprocket, 11 Tooth
12	98-9935	1	Key - Square
13	3246-4	2	Screw-Set
14	98-9088	1	Chain - Roller
15	98-9089	1	Link - Connecting
16	98-9086	1	Sprocket, 20 Tooth
16:1	3247-3	2	Screw-Set
17	98-9082	1	Chain Adjustment ASM
18	3217-11	1	Nut-Hex
19	3296-53	1	Nut-Lock, NI
20	99-5044	1	Holder-Adjustment
21	32128-23	1	Nut-HF

Ref. No.	Part No.	Qty.	Description
22	98-9071	1	Cover - Chain, Tiller
23	3274-52	4	Screw-HSH
25	98-9070	1	Plate-Mount, Motor
26	325-9	1	Screw-HH
27	98-9084	1	Motor - Hydraulic
28	3274-4	4	Screw-HSH
29	104-6207	2	HYD Hose ASM
29:6	237-80	2	O-Ring
30	100-4701	1	Nipple-Connect, Pressure
*30:1	100-6120	1	Kit-Seal
31	100-4234	1	Coupler-Face, Flush
*31:1	100-6119	1	Kit-Seal
32	92-1242	1	Decal-Toro
34	98-3269	1	Decal-Made In USA
35	3253-3	4	Washer-Lock
36	323-6	1	Screw-HH

* Not illustrated



Sheet No.: A1
C-2931

Hydraulic Motor Assembly No. 98-9084

Ref. No.	Part No.	Qty.	Description
8	56-6890	1	Kit-Seal
9	98-9934	1	Key - Square

Ref. No.	Part No.	Qty.	Description
----------	----------	------	-------------

