



Bore Drive Head

Dingo[®] Attachment

Model No. 22420—220000001 and Up

Parts Catalog

Ordering Replacement Parts

To order replacement parts, please supply: the part number, the quantity, and the description of each part desired.

Understanding Reference Numbers

Each identified part in an illustration has a reference number. The reference number for a part also appears in the parts list, along with other information about the part.

This catalog uses two special reference number formats, one to indicate parts in a service assembly and another to indicate the quantity of a given part in an illustration.

Service Assembly Reference Numbers

Parts in service assemblies have reference numbers in the form **a:b**. The **a** represents the reference number of the entire service assembly and the **b** represents a sequential number unique to each part within the service assembly.

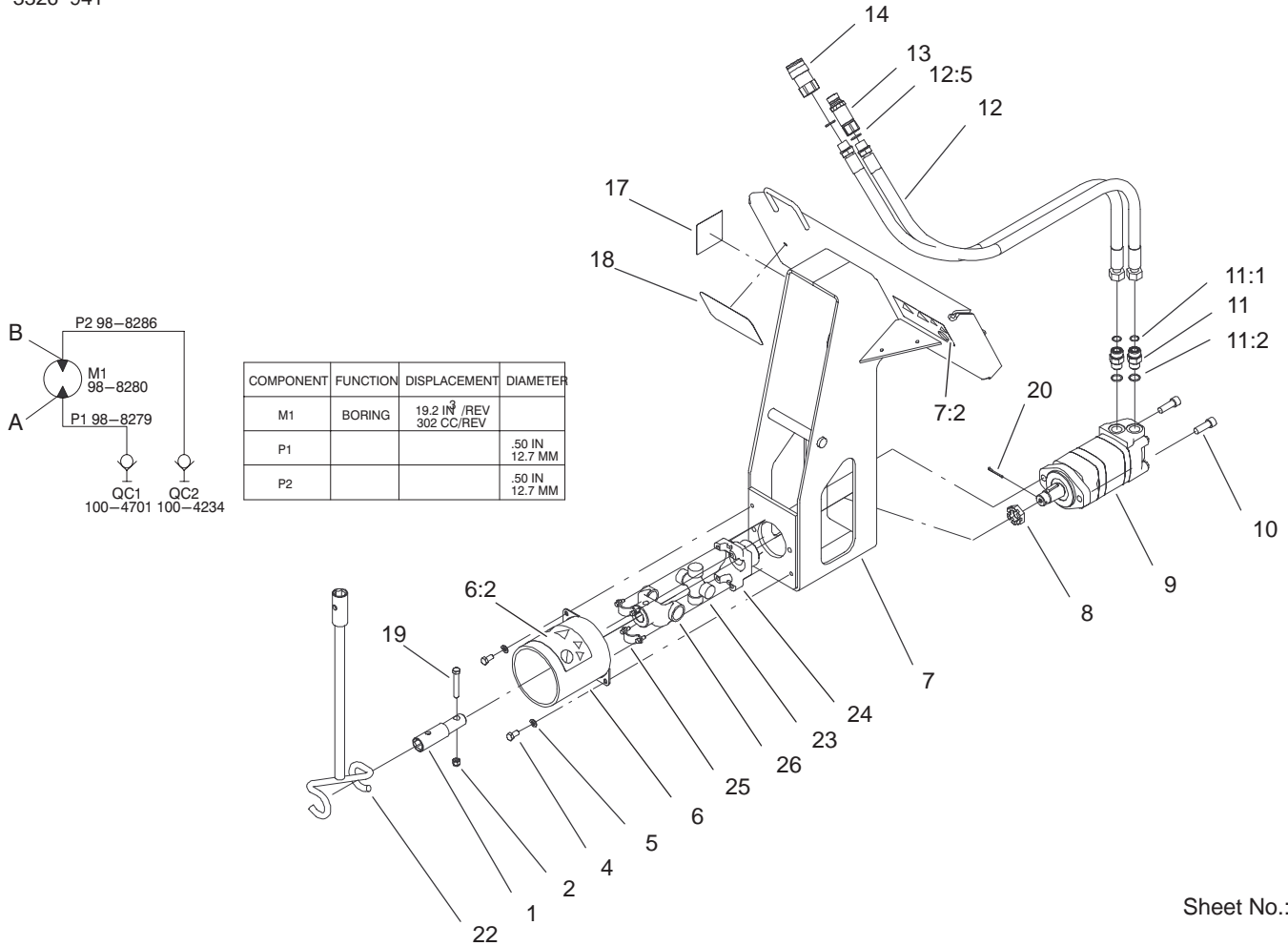
For example, a wheel assembly might be identified by reference number **6**, the tire by **6:1**, the valve by **6:2**, and the wheel by **6:3**. When you order the assembly identified by reference number **6**, you receive all parts identified by reference numbers **6:1**, **6:2**, and **6:3**. However, you may also order any part individually.

Reference numbers of this type appear in illustrations and in part lists.

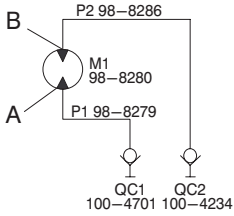
Reference Numbers Indicating Quantity

In an illustration, if a reference number indicates more than one part, the reference number has the form **nX y**. The **n** represents the quantity of the part, the **X** is the multiplication symbol, and the **y** represents the reference number.

For example, in an illustration, the reference number **2X 37** means that two of the parts identified by reference number **37** are indicated.



COMPONENT	FUNCTION	DISPLACEMENT	DIAMETER
M1	BORING	19.2 IN ³ /REV 302 CC/REV	
P1			50 IN 12.7 MM
P2			50 IN 12.7 MM



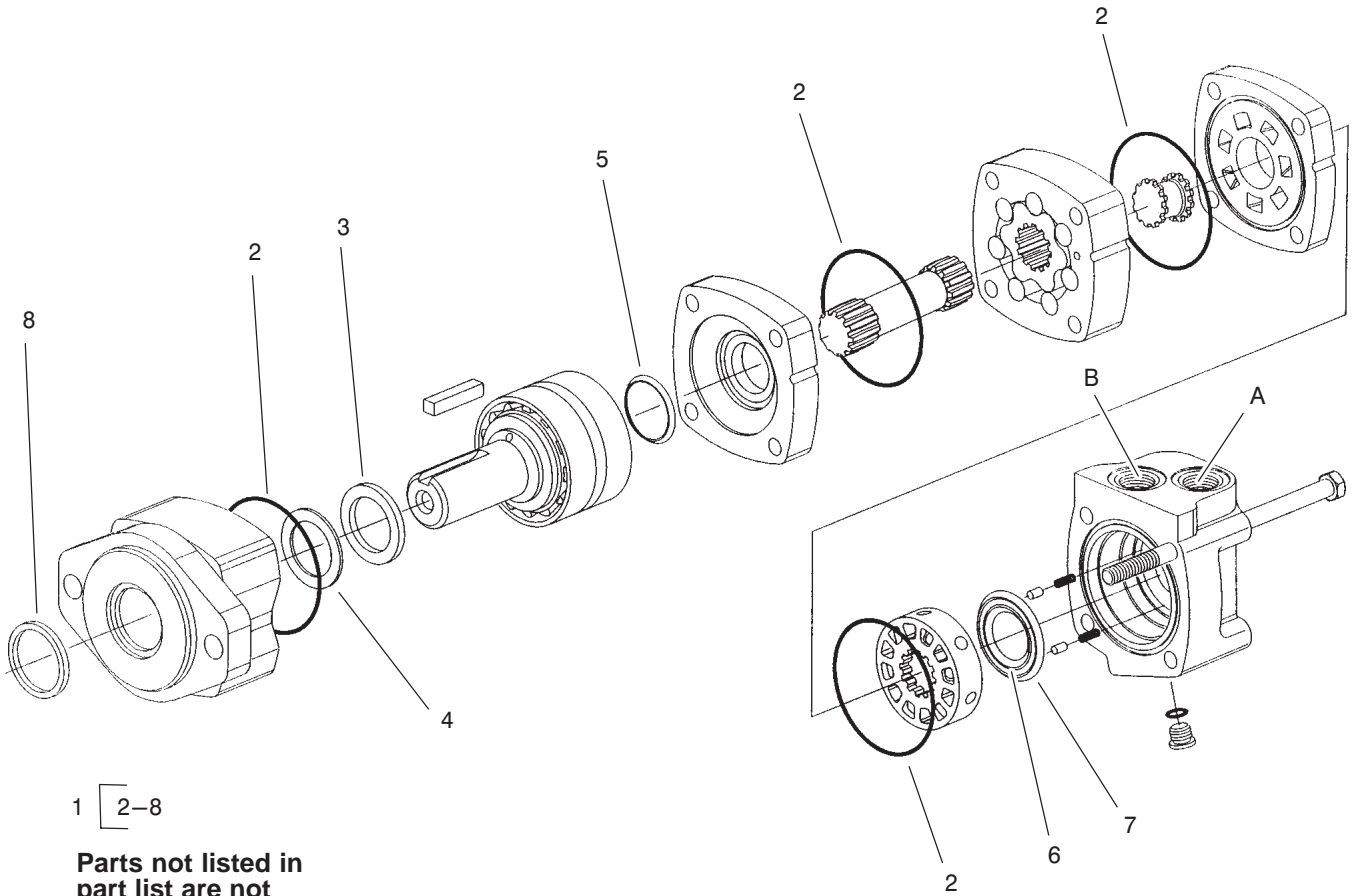
Sheet No.: 0

Bore Drive Head Assembly

Ref. No.	Part No.	Qty.	Description
1	104-1896	1	Coupler ASM
2	3296-22	1	Nut-Lock NI
4	323-4	2	Screw-HH
5	3253-5	2	Washer-Lock
6	104-1895	1	Shield ASM
6:2	99-9945	1	Decal-Warning
7	104-1894	1	Bore Frame ASM
7:2	99-9945	1	Decal-Warning
8	99-3139	1	Nut-Wheel, Motor
9	98-8280	1	Motor - Hydraulic
10	3274-4	2	Screw-HSH
11	340-7	2	Adapter
11:1	237-65	1	O-Ring
11:2	237-80	1	O-Ring
12	104-1932	2	Hose ASM, HYD
12:5	237-80	1	O-Ring
13	100-4701	1	Nipple-Connect, Pressure
*13:1	100-6120	1	Kit-Seal
14	100-4234	1	Coupler-Face, Flush
*14:1	100-6119	1	Kit-Seal
17	98-3269	1	Decal-Made In USA
18	93-7340	1	Decal-Toro
19	323-47	1	Screw-HH
20	99-3171	1	Pin - Cotter
22	104-5988-03	1	Rod Guide Tool ASM

Ref. No.	Part No.	Qty.	Description
23	99-4300	1	U - Joint
24	104-5917	1	Yoke-Ubolt
25	104-5995	1	Bearing Strap Kit
26	104-1904	1	Yoke-Ujoint

* Not illustrated



1 [2-8

Parts not listed in part list are not serviced separately

Sheet No.: A1
C-2754

Hydraulic Motor Assembly No. 98-8280

Ref. No.	Part No.	Qty.	Description
1	56-6890	1	Kit-Seal

Ref. No.	Part No.	Qty.	Description

