



Count on it.

Parts Catalog

**Flex-Force Power System™ 60V
MAX**

43cm Lawn Mower

Model No. 21844—Serial No. 321000001 and Up



Ordering Replacement Parts

To order replacement parts, please supply the part number, the quantity, and the description of each part desired.

Understanding Reference Numbers

Each identified part in an illustration has a reference number. The reference number for a part also appears in the parts list, along with other information about the part.

This catalog uses two special reference number formats, one to indicate parts in a service assembly and another to indicate the quantity of a given part in an illustration.

Service Assembly Reference Numbers

Parts in service assemblies have reference numbers in the form a:b. The a represents the reference number of the entire service assembly and the b represents a sequential number unique to each part within the service assembly.

For example, a wheel assembly might be identified by reference number 6, the tire by 6:1, the valve by 6:2, and the wheel by 6:3. When you order the assembly identified by reference number 6, you receive all parts identified by reference numbers 6:1, 6:2, and 6:3. However, you may also order any part individually. Reference numbers of this type appear in illustration and in parts lists.

Reference Numbers Indicating Quantity

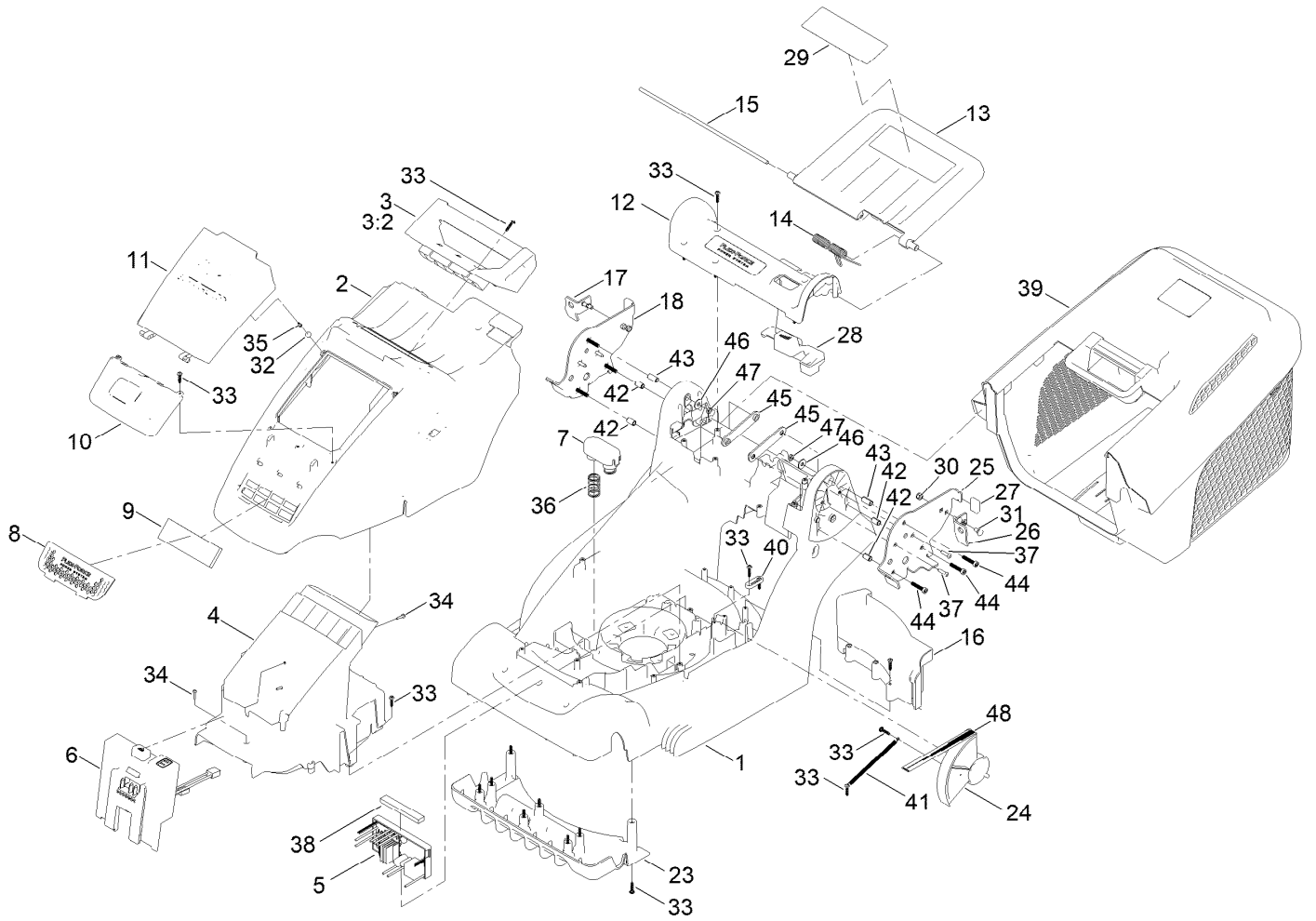
In an illustration, if a reference number indicates more than one part, the reference number has the form nX y. The n represents the quantity of the part, the X is the multiplication symbol, and the y represents the reference number.

For example, in an illustration, the reference number 2X 37 means that two of the parts identified by reference number 37 are indicated.

Contents

Frame Assembly.....	4
Battery Interface Assembly No. 134-4105.....	6
Grass Box Assembly No. 134-6362.....	8
Battery and Blade Assembly.....	10
Traction and Height-of-Cut Assembly.....	12
Wheel Assembly No. 134-4363.....	14
Handlebar and Control Assembly.....	16
Control Arm Assembly No. 134-6355.....	18
Attachments and Accessories.....	20

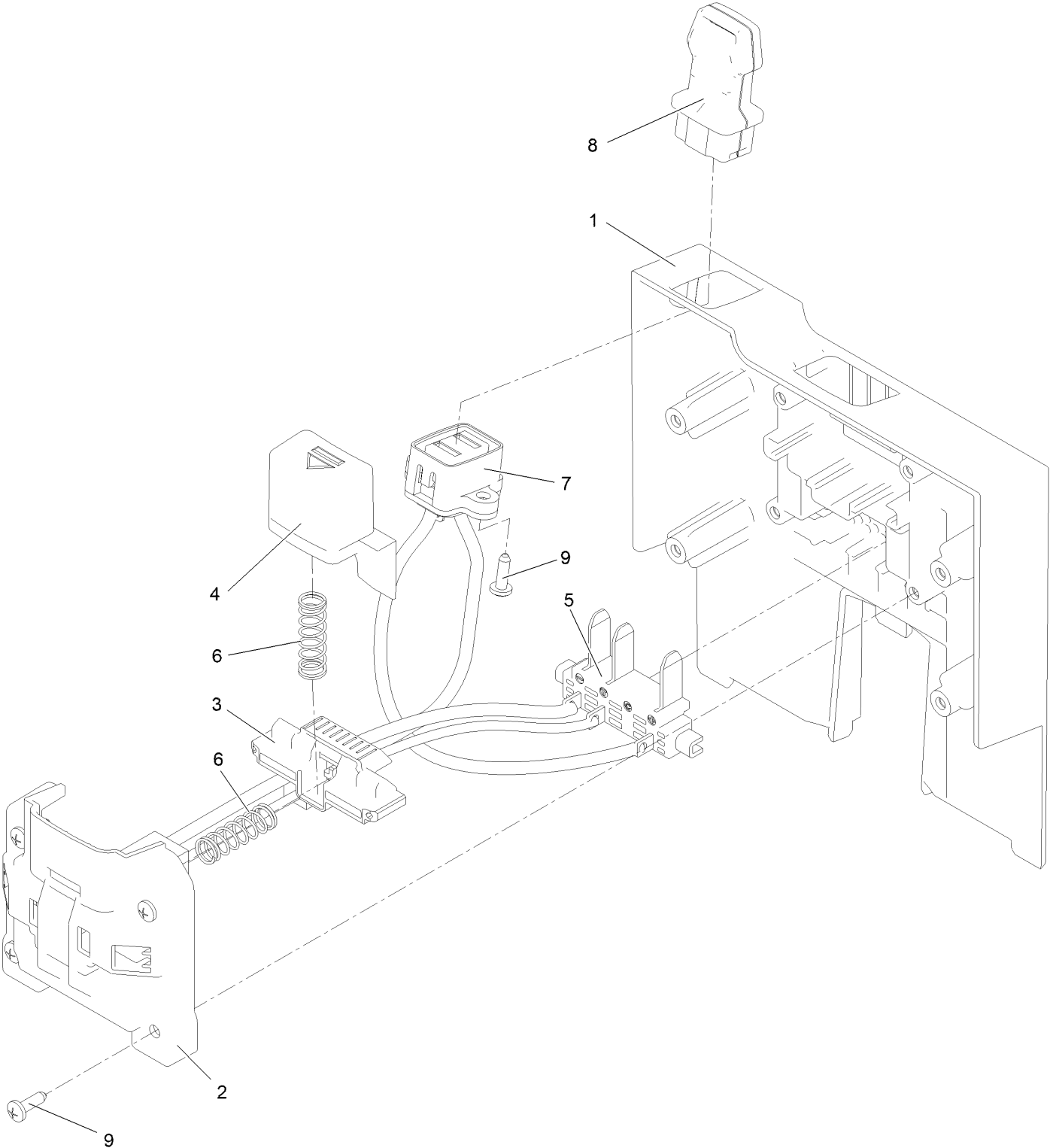
Frame Assembly



Frame Assembly (continued)

<i>Ref.</i>	<i>Part Number</i>	<i>Qty.</i>	<i>Description</i>	<i>Ref.</i>	<i>Part Number</i>	<i>Qty.</i>	<i>Description</i>
1	134-4441	1	Deck	26	134-5175	1	Bracket, V-Stow, Left
2	134-5303	1	Top Cover	27	134-4434	2	Rubber Foot-V-Stow
3	134-5312	1	Carry Handle ASM	28	134-5300	1	HOC Button
3:2	134-5411	1	Artwork - 43CM	29	134-4550	1	Decal-Safety, 60V
4	134-4450	1	Battery Holder	30	134-5234	4	Nut-Hex
5	134-4378	1	Driver-Motor, Self Propelled	31	134-5235	4	Bolt-Carriage
5	134-4436	1	Driver-Motor, Push	32	114-5896	2	Magnet
6	134-4105	1	Battery Interface Assembly	33	134-7001	32	Screw-T
7	134-4372	1	Battery Spring Cover	34	111-9903	5	Screw
8	134-4322	1	Air Inlet Grill-Toro	35	134-4375	2	Screw-Txph
9	134-4341	1	Inner Filter-Foam	36	134-4371	2	Spring, Battery Eject
10	134-5316	1	Battery Door Lower, Printed	37	134-5431	10	Screw-T
11	134-5313	1	Battery Door, Printed	38	134-5432	1	Filter, Air-Control Board
12	134-4443	1	HOC Cover	39	134-6362	1	Grass Box ASM
13	134-5302	1	Rear Deflector	40	134-6367	1	Tab
14	134-4037	1	Spring, Rear Deflector	41	134-6356	1	Spring
15	134-4302	1	Rod, Rear Flap	42	134-6369	4	Bush
16	134-6352	1	Grass Shield (43)	43	134-6374	2	Bush
17	134-5177	1	Bracket, V-Stow, Right	44	134-6371	6	Screw-Tsh
18	134-4398	1	Mount Plate, Handlebar, Right	45	134-6370	2	Brace-Bar
23	134-4100	1	Front Fins	46	134-5439	2	Washer-Plain
24	134-4099	1	HOC Dial	47	134-6376	2	Nut-Hex
25	134-4396	1	Mount Plate, Handlebar, Left	48	134-6817	1	Decal - HOC (Toro 43CM)

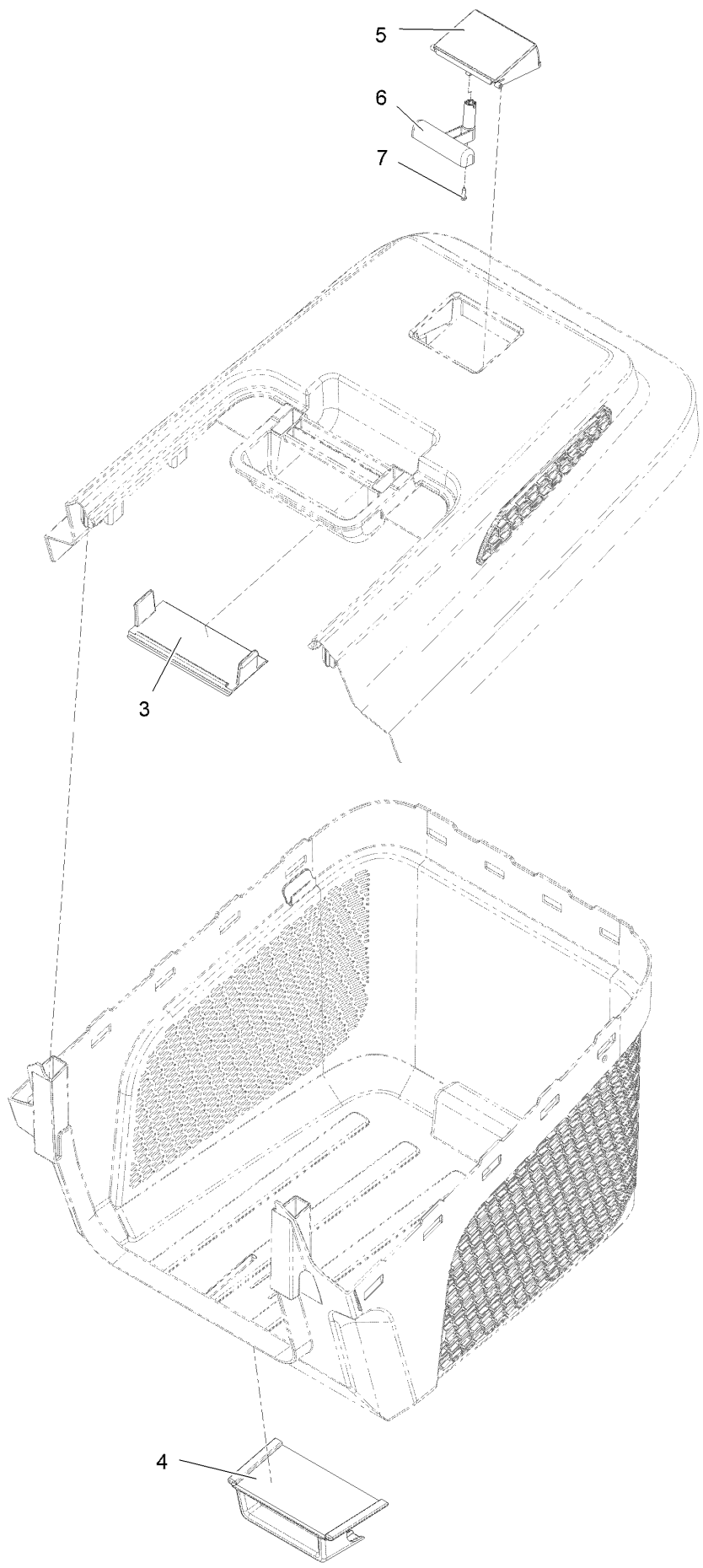
Battery Interface Assembly No. 134-4105



Battery Interface Assembly No. 134-4105 (continued)

<i>Ref.</i>	<i>Part Number</i>	<i>Qty.</i>	<i>Description</i>	<i>Ref.</i>	<i>Part Number</i>	<i>Qty.</i>	<i>Description</i>
1	134-4104	1	Battery Interface	6	134-5362	2	Spring, Battery Latch
2	134-4374	1	Battery Contact Cover	7	134-4386	1	Power Socket
3	134-5359	1	Latch, Battery	8	134-4385	1	Power Key
4	134-4373	1	Battery Button	9	134-5361	6	Screw-T
5	134-5360	1	Connection Terminal, Battery				

Grass Box Assembly No. 134-6362

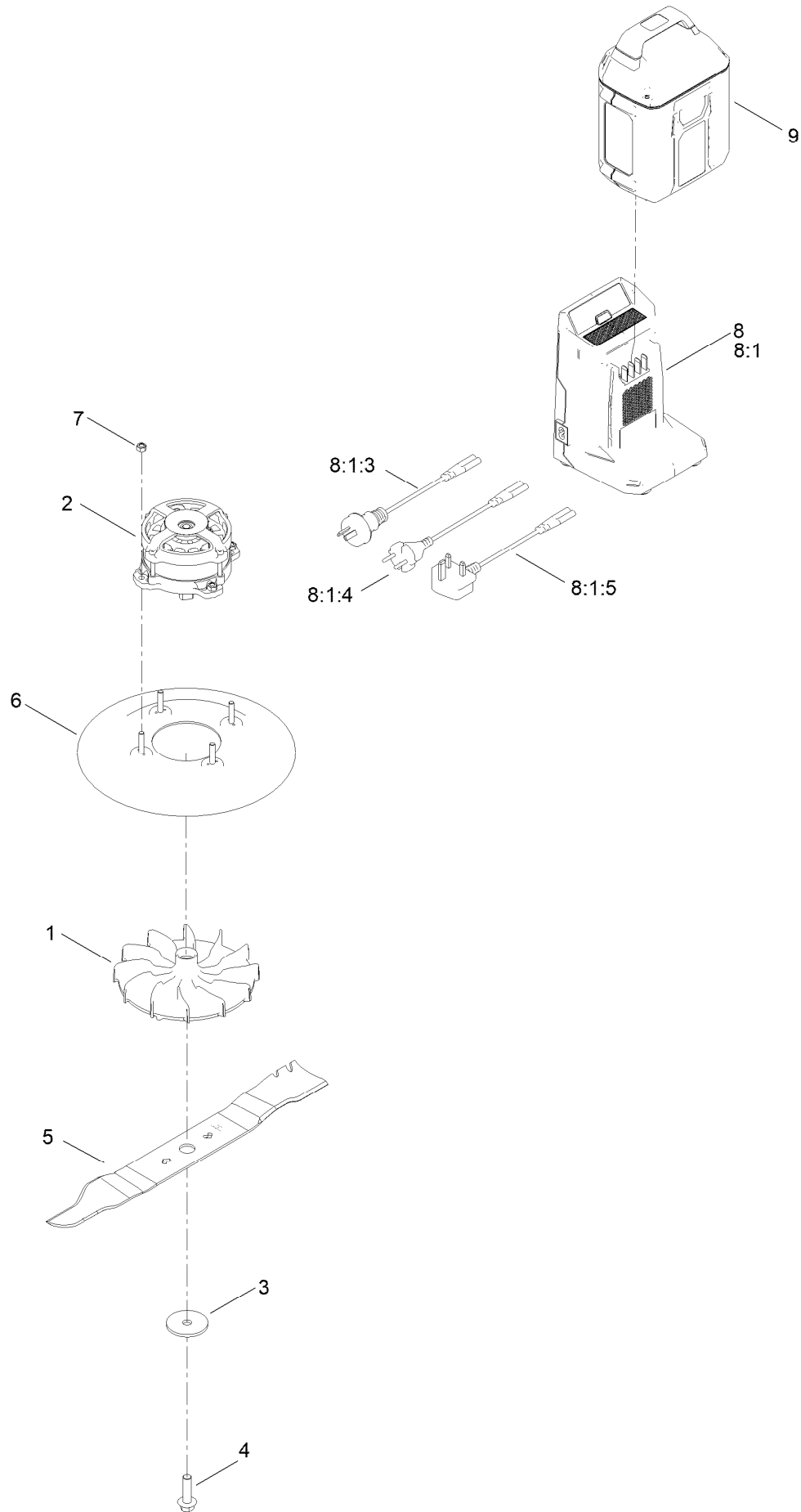


Grass Box Assembly No. 134-6362 (continued)

<i>Ref.</i>	<i>Part Number</i>	<i>Qty.</i>	<i>Description</i>
3	134-4141	1	Grass Box Handle Infill
4	134-4388	1	Grass Box Hook
5	134-4143	1	Grass Box Full Indicator

<i>Ref.</i>	<i>Part Number</i>	<i>Qty.</i>	<i>Description</i>
6	134-5430	1	Counter Weight
7	134-5435	1	Screw-T

Battery and Blade Assembly

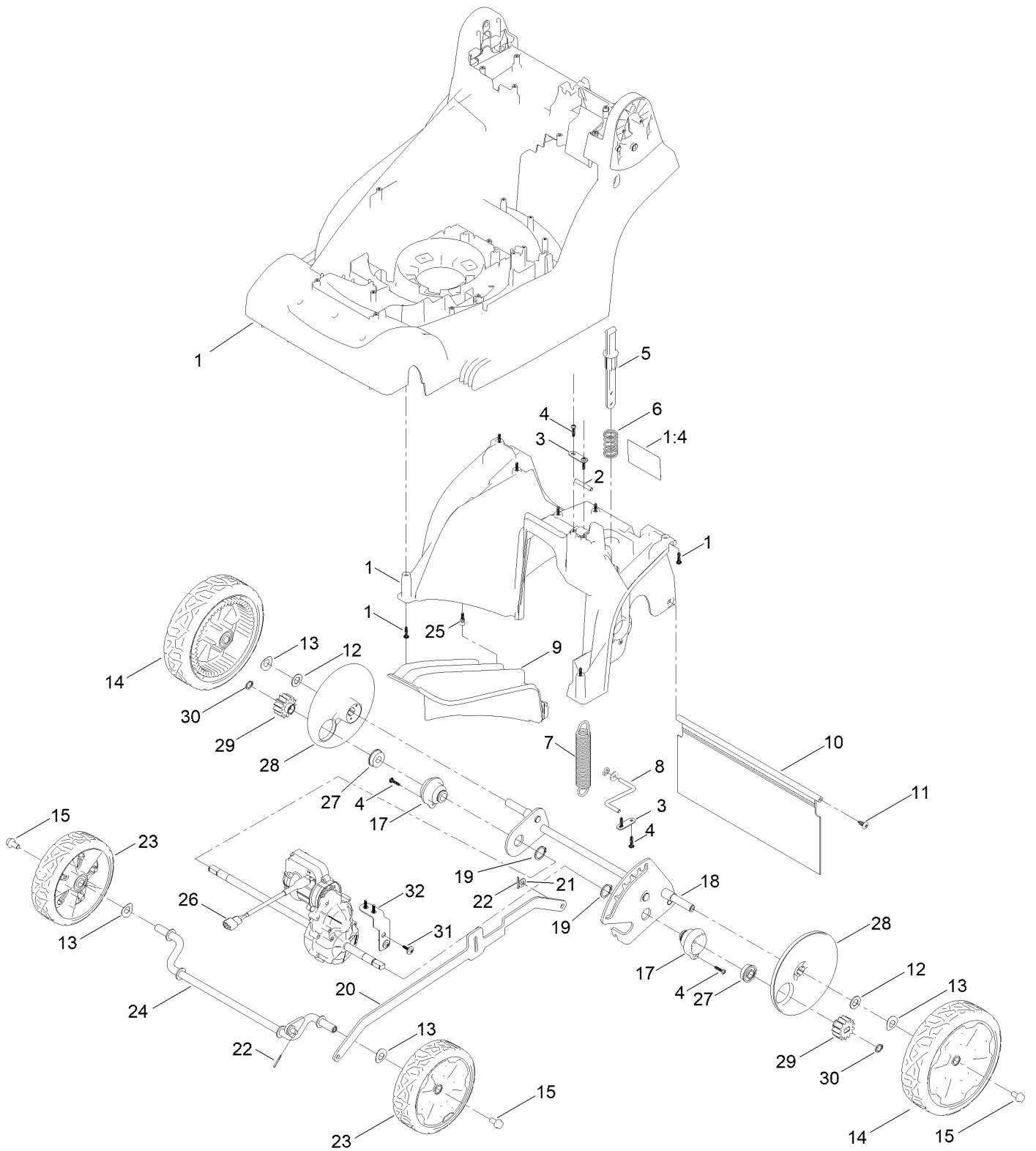


Battery and Blade Assembly (continued)

<i>Ref.</i>	<i>Part Number</i>	<i>Qty.</i>	<i>Description</i>	<i>Ref.</i>	<i>Part Number</i>	<i>Qty.</i>	<i>Description</i>
1	134-4381	1	Blade Carrier	7	134-4467	4	Nut-Hex
2	134-4101	1	Motor, Brushless, 60V, 850W	8	139-8291	1	60V Charger CE
3	134-4382	1	Blade Washer	8:1		1	60V Charger 2 Amp ●
4	134-4383	1	Blade Bolt	8:1:3	140-2192	1	Cord-Charger, Au/Nz
5	134-5199	1	Blade, Mulch, 43CM	8:1:4	140-2193	1	Cord-Charger, CE
6	134-4024	1	Blade Cover	8:1:5	140-2194	1	Cord-Charger, Uk
				9	81850	1	60V 4.0 Ah Battery CE

● Not serviced separately

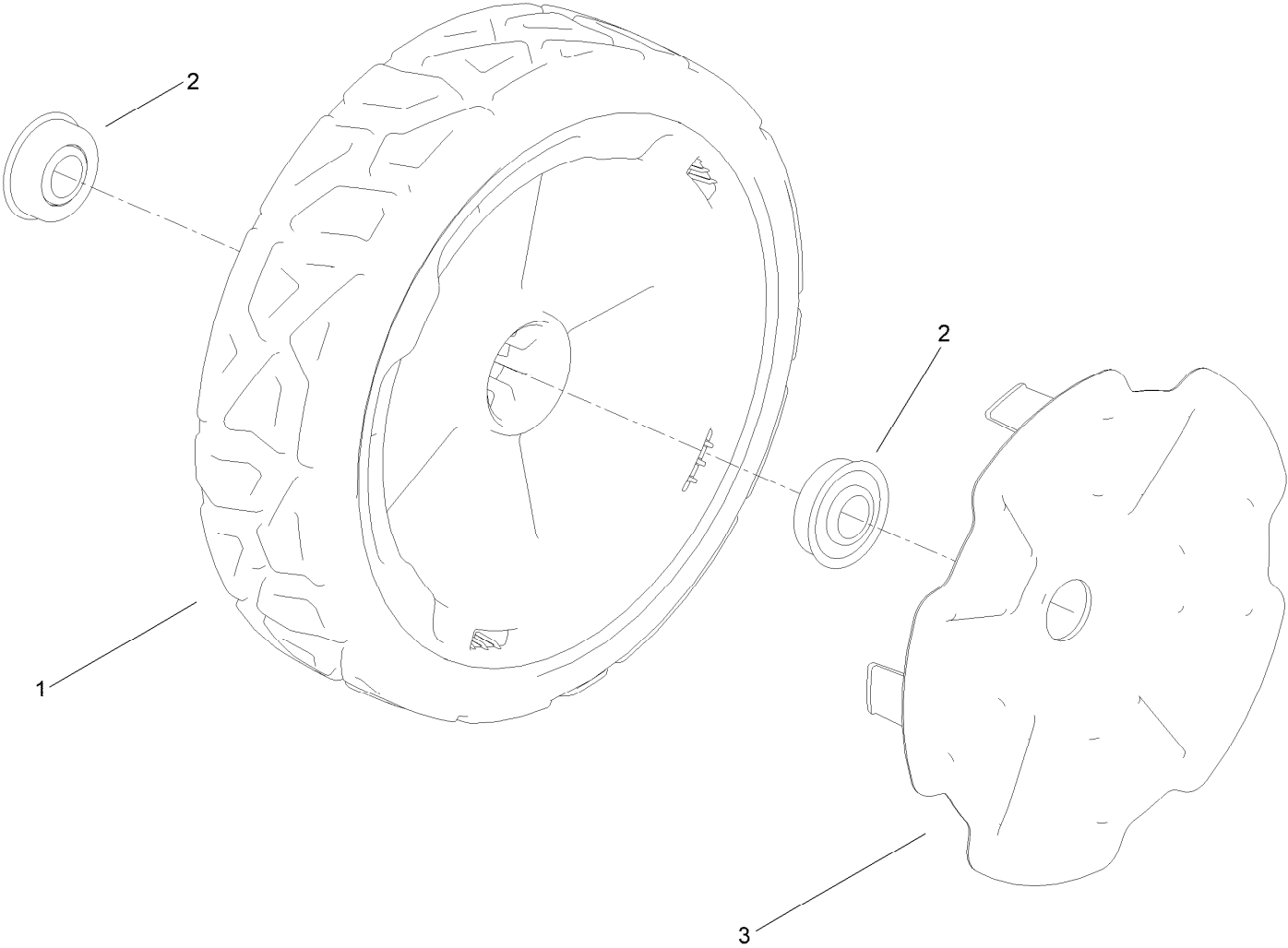
Traction and Height-of-Cut Assembly



Traction and Height-of-Cut Assembly (continued)

<i>Ref.</i>	<i>Part Number</i>	<i>Qty.</i>	<i>Description</i>	<i>Ref.</i>	<i>Part Number</i>	<i>Qty.</i>	<i>Description</i>
1	134-6914	1	Deck, Glued (43)	18	134-4050	1	Rear Axle Frame, Assy, Wheel
1:4	134-5099	1	Decal - Safety	19	134-4435	2	Circlip, EXT
2	134-4096	1	Bar, Spring Mount	20	134-4029	1	Con-Rod, 4 Wheel
3	134-4394	2	Axle Plate, Small	21	106-4756	1	Washer-Plain
4	134-7001	4	Screw-T	22	134-4454	1	Cotter Pin
5	134-4319	1	HOC Button Plunger	23	134-4307	2	Wheel-Toro Front Assembly
6	134-4088	1	Spring, HOC Button	24	134-4312	1	Front Axle, Assembly
7	134-4092	1	HOC Spring, 4 Wheel	25	134-5294	2	Pin, Retaining, Mulch Plug
8	134-7568	1	HOC Wire ASM	26	134-4102	1	Transmission, 4-Wheel
9	134-5295	1	Mulch Plug	27	104-8699	2	Bearing-Ball
10	134-4437	1	Shield-Trailing	28	134-4033	2	Inner Cover, Rear Wheel
11	117-1092	2	Screw-PTH	29	134-5214	2	Gear-Pinion, 13T
12	ZWP1L000U	2	Washer-Plain	30	32151-61	2	Ring-Retaining
13	134-4457	4	Washer-Wave	31	134-4476	4	Screw-T
14	134-4363	2	Wheel-Rear Assembly	32	134-4391	1	Bracket, Gearbox, 4-Wheel
15	134-4358	3	Bolt-HF				
17	134-4452	2	Bearing Mount				

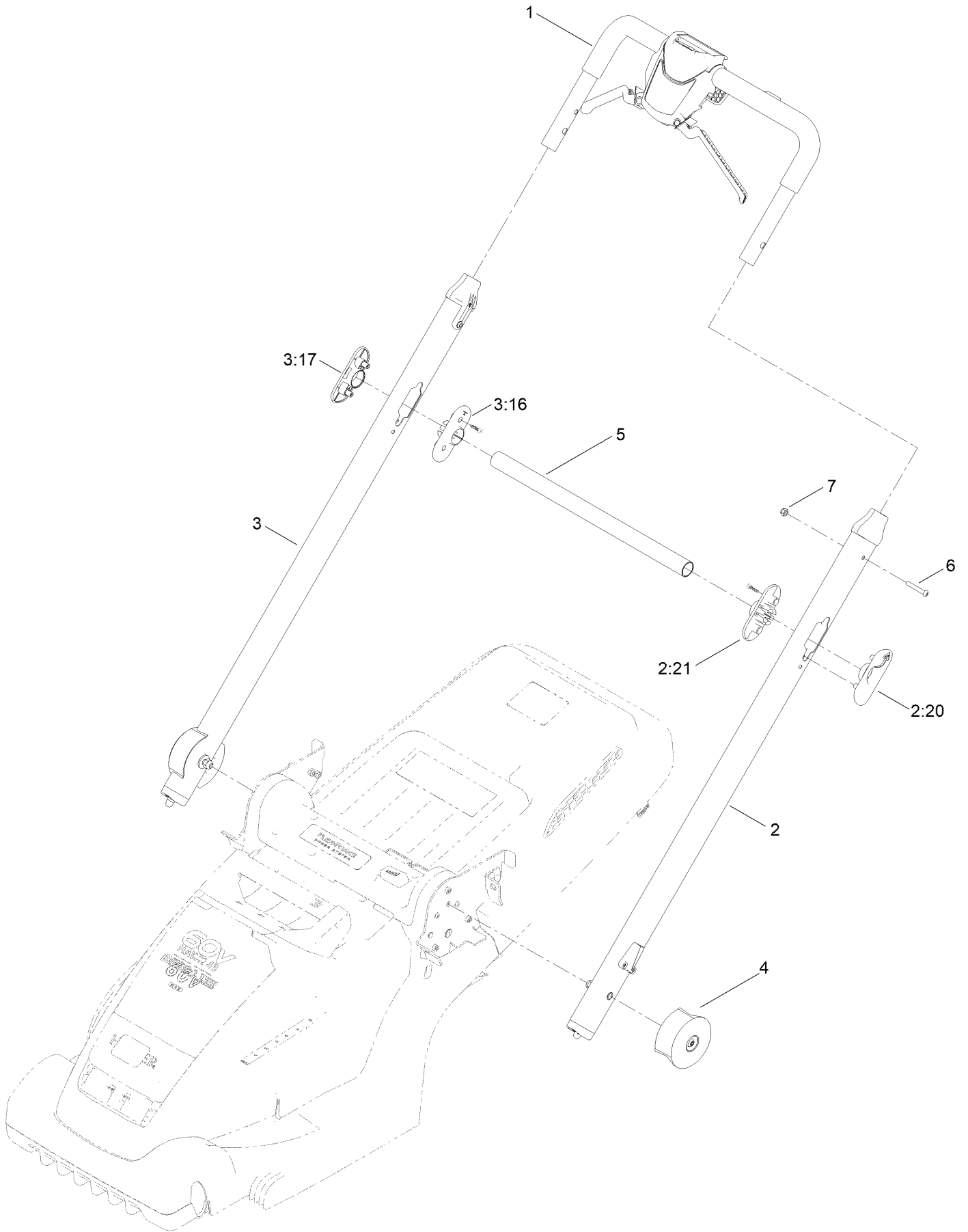
Wheel Assembly No. 134-4363



Wheel Assembly No. 134-4363 (continued)

<i>Ref.</i>	<i>Part Number</i>	<i>Qty.</i>	<i>Description</i>
1	134-4404	1	Wheel-Toro Rear
2	134-4377	2	Bearing
3	134-4366	1	Rear Wheel Trim - Toro

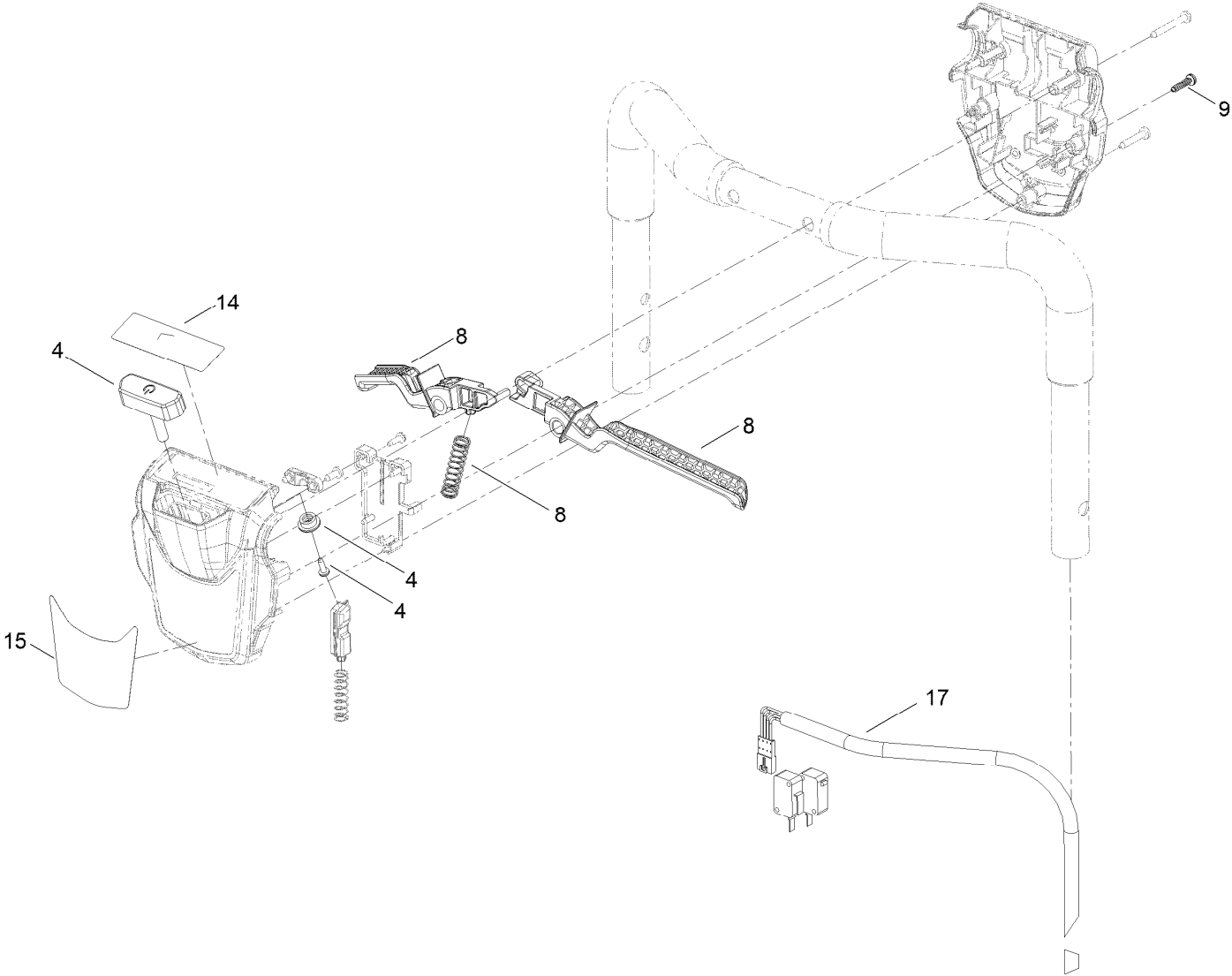
Handlebar and Control Assembly



Handlebar and Control Assembly (continued)

<i>Ref.</i>	<i>Part Number</i>	<i>Qty.</i>	<i>Description</i>	<i>Ref.</i>	<i>Part Number</i>	<i>Qty.</i>	<i>Description</i>
1	134-6355	1	Control Lever ASM, Propelled	3:16	134-5308	1	Handlebar Brace - Inner
2	134-6353	2	Handlebar ASM, LH	3:17	134-5309	1	Handlebar Brace, Outer
2:20	134-5308	1	Handlebar Brace - Inner	4	134-4416	2	Handlebar End Cap
2:21	134-5309	1	Handlebar Brace, Outer	5	134-4458	1	Brace, Handlebar Release
3	134-6354	2	Handlebar ASM, RH	6	134-5206	2	Bolt-P
				7	134-5207	2	Nut, M6, Nyloc

Control Arm Assembly No. 134-6355



Control Arm Assembly No. 134-6355 (continued)

<i>Ref.</i>	<i>Part Number</i>	<i>Qty.</i>	<i>Description</i>	<i>Ref.</i>	<i>Part Number</i>	<i>Qty.</i>	<i>Description</i>
4	134-6903	1	Top Button Kit	14	134-5297	1	Decal - Boost Key Mat
8	134-6905	1	Upper Lever Kit (36)	15	134-2697	1	Decal - Volta Handle
9	134-5205	2	Screw-T	17	134-5455	1	Wiring Loom, Push

Attachments and Accessories

For 21844 Flex-Force Power System 60V MAX 43cm Lawn Mower

Product Name	Model/Part
60V 2.5AH BATTERY CE HAYTER	CODE102A
60V 4.0AH BATTERY CE HAYTER	CODE104A
60V 6.0AH BATTERY CE HAYTER	CODE106A
60V 7.5AH BATTERY CE HAYTER	CODE107A
60V BATTERY CHARGER 2 AMP CE HAYTER	CODE120A
60V FAST CHARGER, CE HAYTER	CODE121A

Notes:

Notes:

Notes:



Count on it.