



Count on it.

Parts Catalog

**36in Sprayer
SprayMaster**

Model No. 34246—Serial No. 40000000 and Up



Ordering Replacement Parts

To order replacement parts, please supply the part number, the quantity, and the description of each part desired.

Understanding Reference Numbers

Each identified part in an illustration has a reference number. The reference number for a part also appears in the parts list, along with other information about the part.

This catalog uses two special reference number formats, one to indicate parts in a service assembly and another to indicate the quantity of a given part in an illustration.

Service Assembly Reference Numbers

Parts in service assemblies have reference numbers in the form a:b. The a represents the reference number of the entire service assembly and the b represents a sequential number unique to each part within the service assembly.

For example, a wheel assembly might be identified by reference number 6, the tire by 6:1, the valve by 6:2, and the wheel by 6:3. When you order the assembly identified by reference number 6, you receive all parts identified by reference numbers 6:1, 6:2, and 6:3. However, you may also order any part individually. Reference numbers of this type appear in illustration and in parts lists.

Reference Numbers Indicating Quantity

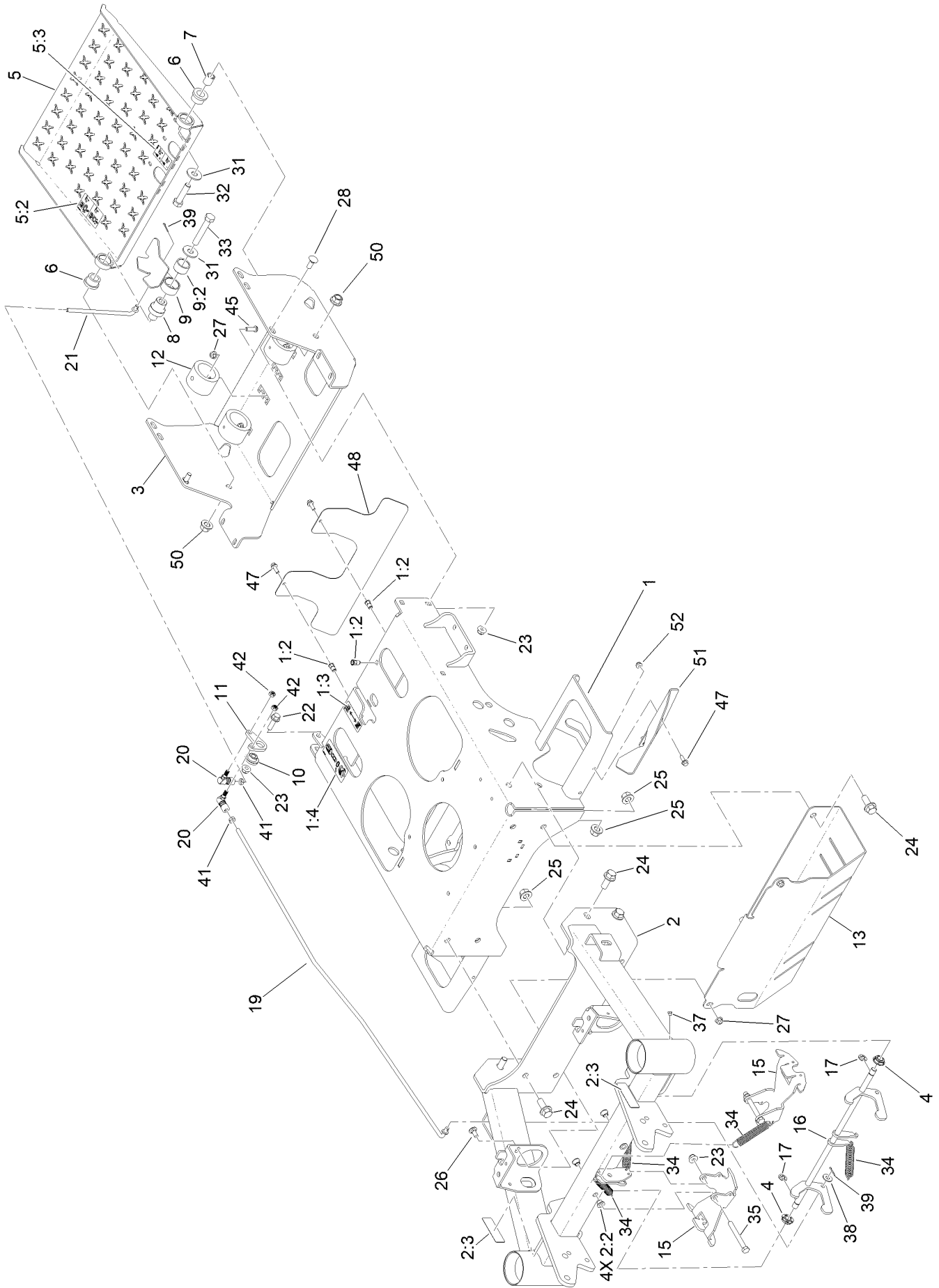
In an illustration, if a reference number indicates more than one part, the reference number has the form nX y. The n represents the quantity of the part, the X is the multiplication symbol, and the y represents the reference number.

For example, in an illustration, the reference number 2X 37 means that two of the parts identified by reference number 37 are indicated.

Contents

| | |
|---|----|
| Frame Assembly | 4 |
| Engine Assembly | 6 |
| Hydraulic Transmission Assembly | 8 |
| Idler Arm Assembly No. 142-9334 | 10 |
| Brake Assembly | 12 |
| Electrical Assembly | 14 |
| Foot Switch Assembly | 16 |
| Controls Assembly | 18 |
| Tire Assembly | 20 |
| Caster Wheels Assembly | 22 |
| Fuel Tank Assembly | 24 |
| Fuel Tank Assembly No. 142-7602 | 26 |
| Spreader Assembly | 28 |
| Hopper Motor Assembly | 30 |
| Hopper Console Assembly | 32 |
| Sprayer Tanks Assembly | 34 |
| Sprayer Manifold Assembly No. 142-7050 | 36 |
| Boom Assembly | 38 |
| Pump Assembly | 40 |
| Spray Gun Assembly | 42 |
| Hopper Cover, Knee Pad and Battery Assembly | 44 |

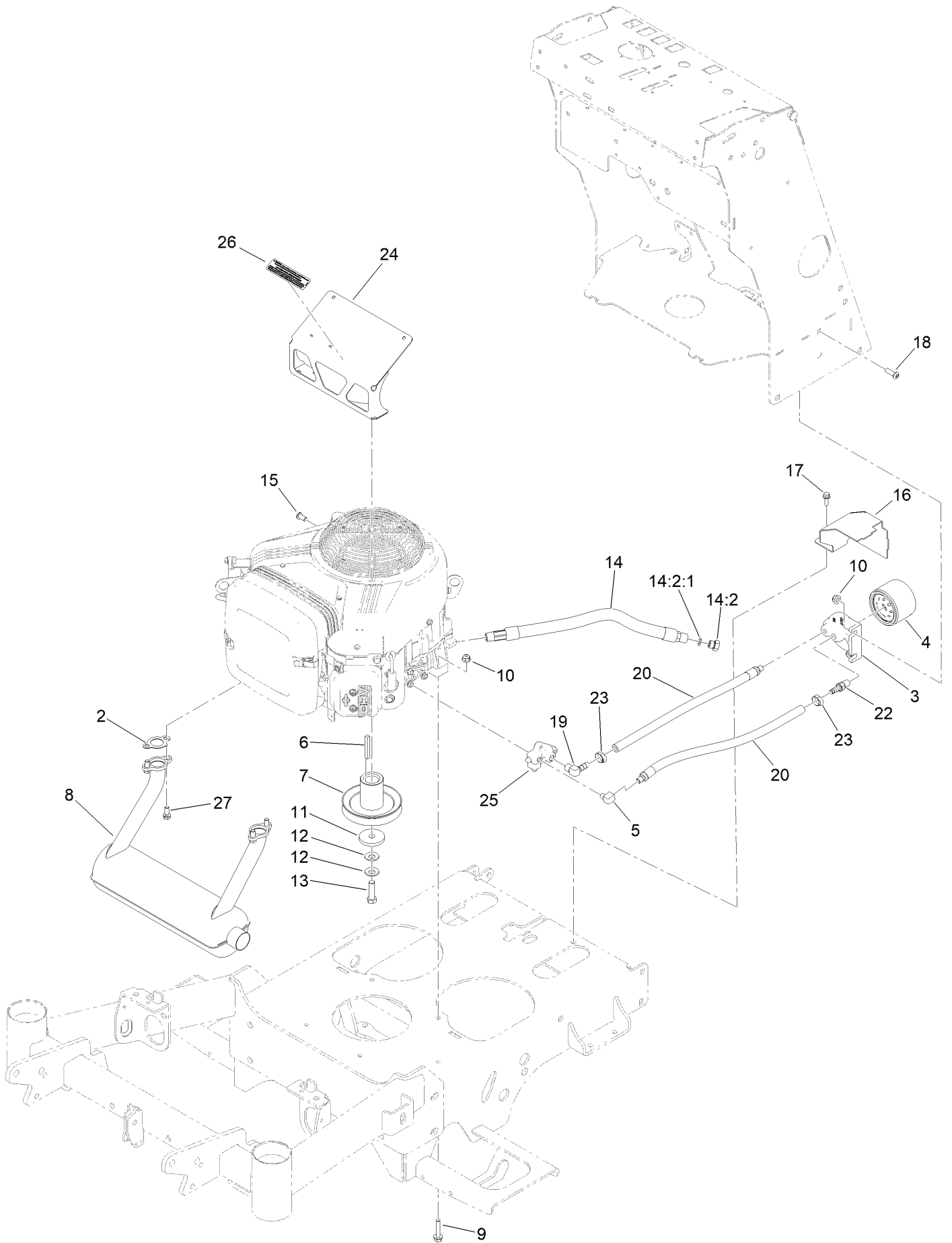
Frame Assembly



Frame Assembly (continued)

| <i>Ref.</i> | <i>Part Number</i> | <i>Qty.</i> | <i>Description</i> | <i>Ref.</i> | <i>Part Number</i> | <i>Qty.</i> | <i>Description</i> |
|-------------|--------------------|-------------|------------------------------------|-------------|--------------------|-------------|-------------------------------------|
| 1 | 142-7607 | 1 | Frame-Rear, Jr36 | 21 | 142-6885 | 1 | Linkage-Pedal, Caster |
| 1:2 | 138-2758 | 3 | Nut-Clinch,Hex | 22 | 135-6211 | 1 | Screw-HHF |
| 1:3 | 115-9625 | 1 | Decal-Brake, Parking | 23 | 135-6110 | 5 | Nut-Hex Flange |
| 1:4 | 142-8173 | 1 | Decal-Strainer | 24 | 135-6207 | 8 | Screw-HHF |
| 2 | 142-7894 | 1 | Frame-Front, Jr36 | 25 | 135-6111 | 8 | Nut-Hex Flange |
| 2:2 | 137-2374 | 4 | Bushing-Flange | 26 | 126-0695 | 2 | Screw-CARR |
| 2:3 | 120-0625 | 2 | Decal-Warning | 27 | 135-6109 | 6 | Nut-Hex Flange |
| 3 | 142-8954 | 1 | Mount-Footplate, Jr36 | 28 | 126-0980 | 2 | Screw-CARR |
| 4 | 126-5820 | 2 | Bearing-Spherical | 31 | 3256-6 | 2 | Washer-Flat |
| 5 | 142-6884 | 1 | Foot Plate W/Decals | 32 | 325-8 | 1 | Screw-HH |
| 5:2 | 135-6430 | 1 | Decal-Lock, Caster | 33 | 325-12 | 1 | Screw-HH |
| 5:3 | 135-6728 | 1 | Decal-Button, Foot (Spray) | 34 | 126-2127 | 4 | Spring-Extension |
| 6 | 142-6033 | 2 | Bushing-Rubber | 35 | 126-2661 | 2 | Screw-HH |
| 7 | 142-6034 | 1 | Spacer | 37 | 1-811010 | 2 | Plug |
| 8 | 142-6878 | 1 | Pivot-Pedal, Caster | 38 | HDW14535 | 1 | Flat Washer, 5/16 Nom,ST/ST,18-8 |
| 9 | 142-4222 | 1 | Pedal-Lock, Caster | 39 | HDW14430 | 2 | Cotter Pin 5/64X3/4 18-8 |
| 9:2 | 116-9538 | 1 | Bushing | 41 | 107-0282 | 2 | Nut-Hex |
| 10 | 126-5989 | 1 | Pivot-Flange | 42 | 142-5498 | 2 | Nut-Lock, NI |
| 11 | 142-3960 | 1 | Crank-Deflector | 45 | 119-6903 | 4 | Screw-HSBH |
| 12 | 135-2548 | 4 | Bumper-Isolator | 47 | 135-6221 | 4 | Screw-HHF |
| 13 | 142-8930 | 1 | Guard-Muffler | 48 | 142-7335 | 1 | Deflector-Heat |
| 15 | 142-4431 | 2 | Arm-Lock, Caster | 50 | 99-5107 | 2 | Nut-Lock |
| 16 | 142-5594 | 1 | Crank-Lock, Caster | 51 | 146-1148 | 1 | Shield-Tank Heat |
| 17 | 142-4698 | 2 | Ring-E | 52 | 135-6108 | 2 | Nut-Hex Flange |
| 19 | 142-8931 | 1 | Linkage-Lock, Caster | | | | |
| 20 | 135-5718 | 2 | Ball Joint-Quick Disconnect, SS | | | | |

Engine Assembly

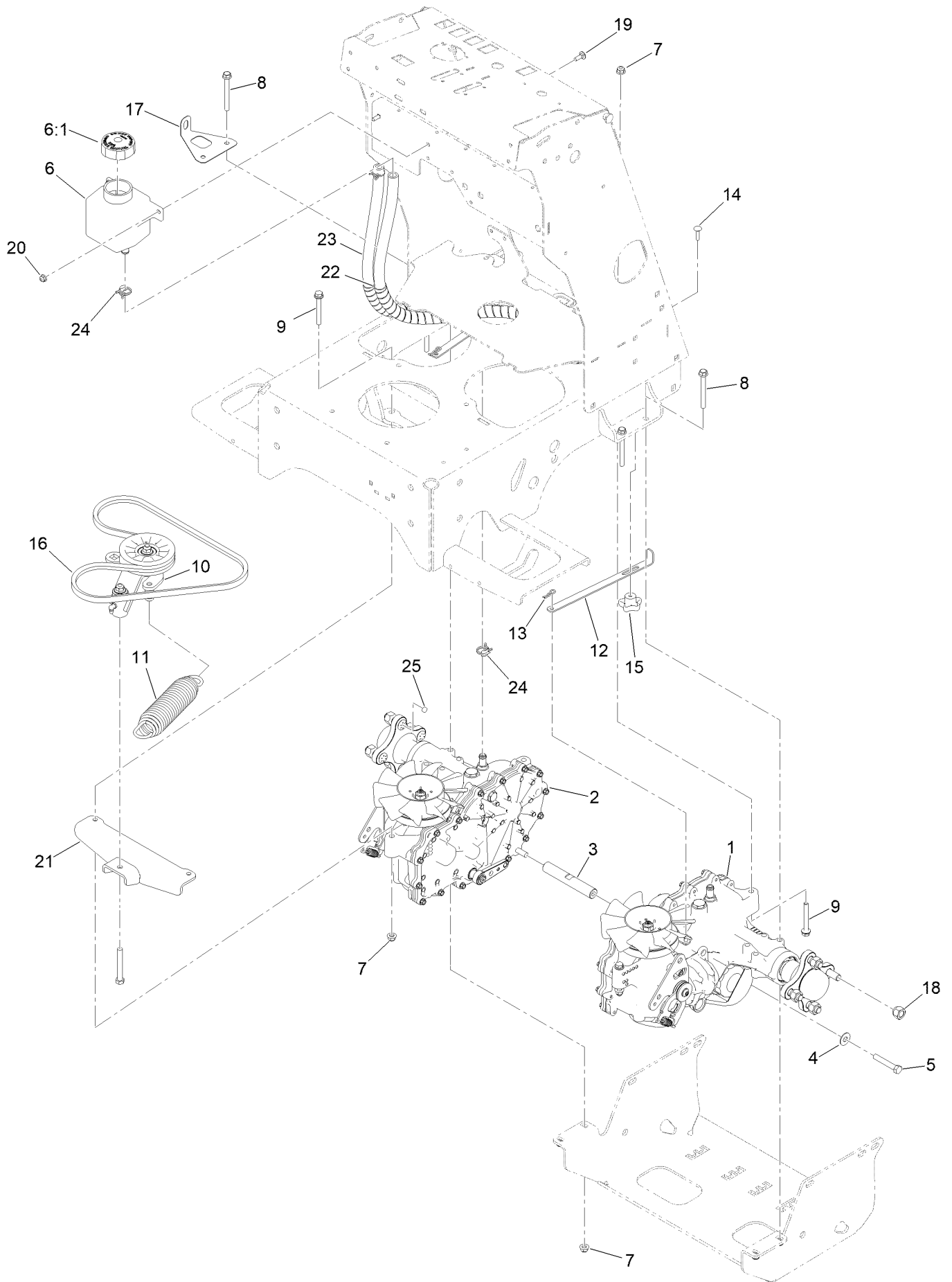


Engine Assembly (continued)

| <i>Ref.</i> | <i>Part Number</i> | <i>Qty.</i> | <i>Description</i> | <i>Ref.</i> | <i>Part Number</i> | <i>Qty.</i> | <i>Description</i> |
|-------------|--------------------|-------------|--------------------------|-------------|--------------------|-------------|-----------------------|
| 2 | 94-3449 | 2 | Gasket-Manifold, Exhaust | 14:2:1 | 237-42 | 1 | O-Ring |
| 3 | 142-7348 | 1 | Mount-Filter, Remote | 15 | 110-0032 | 1 | Screw-Bhtorx |
| 4 | 142-7347 | 1 | Filter-Oil | 16 | 142-7608 | 1 | Cover-Filter |
| 5 | 142-7351 | 1 | Elbow-Pipe, 90 | 17 | 135-6221 | 1 | Screw-HHF |
| 6 | 103-4177 | 1 | Key | 18 | 119-6903 | 2 | Screw-HSBH |
| 7 | 142-9341 | 1 | Pulley-Engine | 19 | 354-93 | 1 | Fitting-Elbow, 90 |
| 8 | 135-9245 | 1 | Briggs 16/18 HP Muffler | 20 | 142-7865 | 2 | Hose Am, HYD LP |
| 9 | 142-0559 | 4 | Screw-HHF | 22 | 108-0342 | 1 | Fitting-Straight |
| 10 | 135-6109 | 6 | Nut-Hex Flange | 23 | 135-5757 | 1 | Clamp-Oetiker, 167 |
| 11 | 109-6919 | 1 | Washer-Clutch | 24 | 142-7880 | 1 | Bracket-Engine |
| 12 | 1-603610 | 2 | Washer-Spring | 25 | 142-7350 | 1 | Adapter-ASM, Service |
| 13 | 109-9761 | 1 | Screw-HH | 26 | 133-8062 | 1 | Decal-Arrestor, Spark |
| 14 | 116-5316 | 1 | Oil Drain Hose ASM | 27 | 3274-96 | 4 | Screw-HSBH |
| 14:2 | 353-508 | 1 | Plug-HH ● | | | | |

● Torque to 24-26 ft-lb

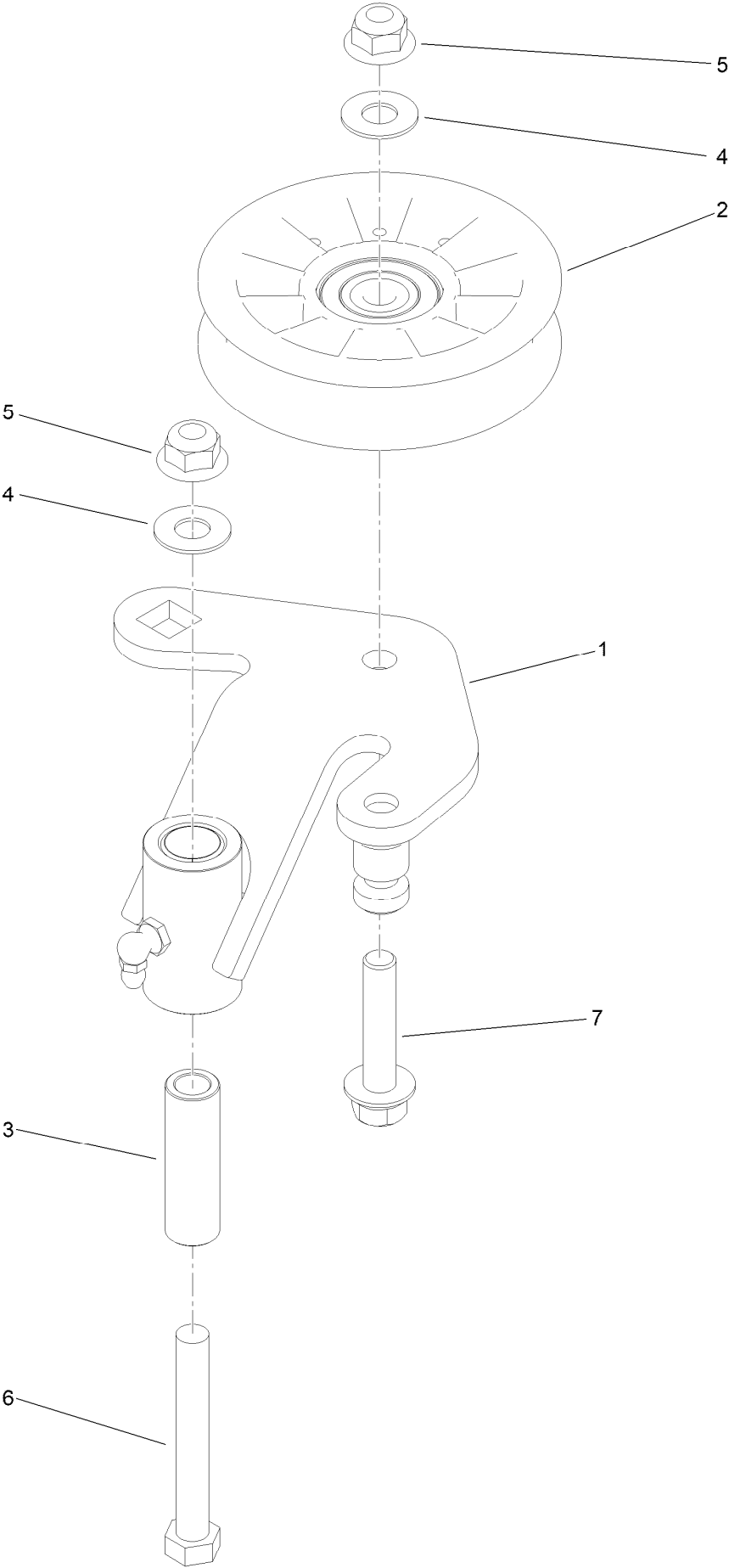
Hydraulic Transmission Assembly



Hydraulic Transmission Assembly (continued)

| <i>Ref.</i> | <i>Part Number</i> | <i>Qty.</i> | <i>Description</i> | <i>Ref.</i> | <i>Part Number</i> | <i>Qty.</i> | <i>Description</i> |
|-------------|--------------------|-------------|--------------------------------|-------------|--------------------|-------------|-----------------------------------|
| 1 | 142-5596 | 1 | Zt3400-Left | 13 | 1-806003 | 2 | Pin-Cotter |
| 2 | 142-5595 | 1 | Zt3400-Right | 14 | 126-1455 | 2 | Screw-CARR |
| 3 | 142-4644 | 1 | Shaft-Spacer | 15 | 108-6402 | 2 | Knob-Handle |
| 4 | 1126 | 2 | Washer-Flat | 16 | 109-1057 | 1 | Belt, Pump Drive |
| 5 | HDW05862 | 2 | HHCS,3/8-16X2-1/4ST/ST 18-8 | 17 | 142-6352 | 1 | Bracket-Sensor, Speed |
| 6 | 109-2250 | 1 | Tank-HYD | 18 | 242-50 | 8 | Nut-Lug |
| 6:1 | 109-3320 | 1 | Cap-Reservoir, HYD | 19 | HDW20143 | 2 | Bolt, Carriage, 1/4-20X3/4, ST/ST |
| 7 | 104-8300 | 8 | Nut-HF, NI | 20 | 135-6108 | 2 | Nut-Hex Flange |
| 8 | 126-4687 | 4 | Screw-HHF | 21 | 142-6377 | 1 | Mount-Idler |
| 9 | 138-9270 | 4 | Screw-HHF | 22 | 142-7310 | 1 | Hose-Expansion [wrapped] |
| 10 | 142-9334 | 1 | ASM-Arm, Idler | 23 | 142-7311 | 1 | Hose-Expansion [wrapped] |
| 11 | 116-6317 | 1 | Spring-Extension | 24 | 117-1193 | 4 | Clamp-Hose |
| 12 | 142-6344 | 2 | Arm-Hydro, Bypass | 25 | 135-8903 | 1 | Magnet-Speedometer |

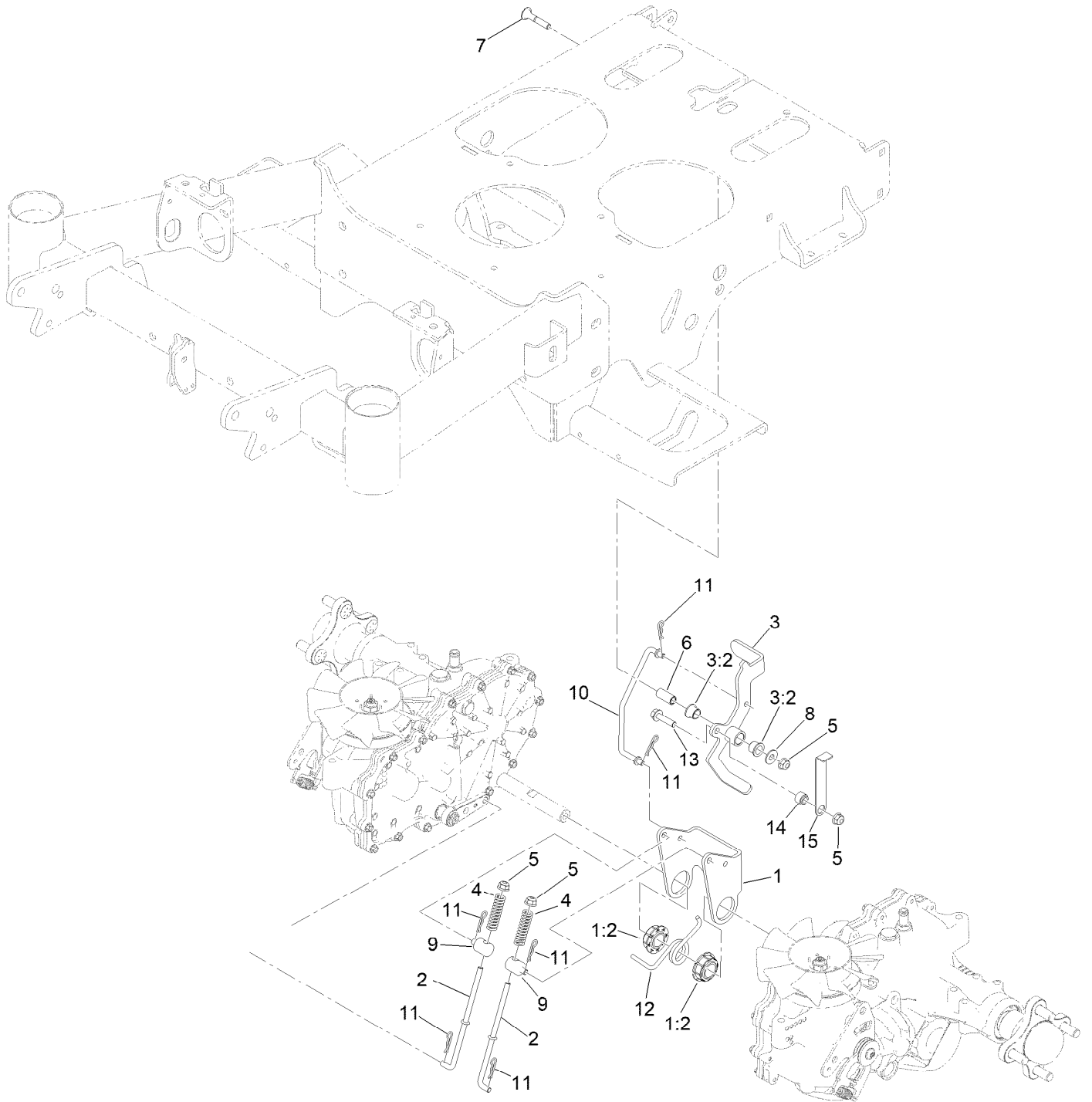
Idler Arm Assembly No. 142-9334



Idler Arm Assembly No. 142-9334 (continued)

| <i>Ref.</i> | <i>Part Number</i> | <i>Qty.</i> | <i>Description</i> | <i>Ref.</i> | <i>Part Number</i> | <i>Qty.</i> | <i>Description</i> |
|-------------|--------------------|-------------|---------------------------|-------------|--------------------|-------------|-------------------------------------|
| 1 | 142-9335 | 1 | Arm-Idler | 5 | 135-6110 | 2 | Nut-Hex Flange |
| 2 | 116-2456 | 1 | Pulley-Flat Idler | 6 | HDW19396 | 1 | HHCS,3/8-16X2-3/4,1TI,ST/ST 18-8 |
| 3 | 142-9339 | 1 | Pivot-Idler | 7 | 126-2710 | 1 | Screw-HHF |
| 4 | HDW05859 | 2 | Washer,Flat,3/8ST/ST 18-8 | | | | |

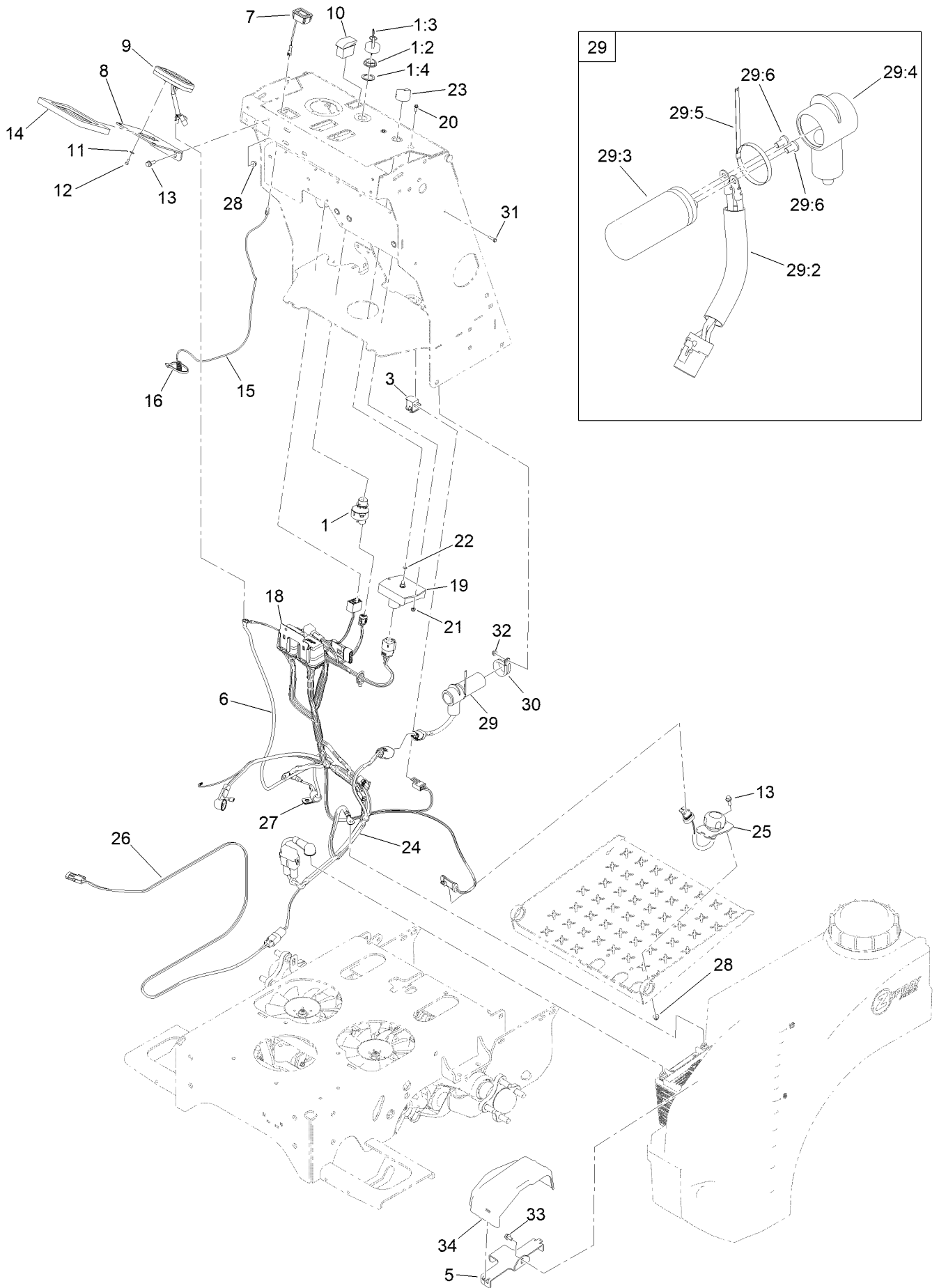
Brake Assembly



Brake Assembly (continued)

| <i>Ref.</i> | <i>Part Number</i> | <i>Qty.</i> | <i>Description</i> | <i>Ref.</i> | <i>Part Number</i> | <i>Qty.</i> | <i>Description</i> |
|-------------|--------------------|-------------|-----------------------|-------------|--------------------|-------------|-------------------------------------|
| 1 | 142-6201 | 1 | ASM-Brake, Bell Crank | 8 | HDW14535 | 1 | Flat Washer, 5/16 Nom,ST/ST,18-8 |
| 1:2 | 142-4668 | 2 | Bearing-Spherical | 9 | 142-4646 | 2 | Fitting-Rod |
| 2 | 142-4669 | 2 | Rod-Brake, Lower | 10 | 142-4670 | 1 | Rod-Brake, Upper |
| 3 | 142-6202 | 1 | ASM-Brake, Handle | 11 | 1-806003 | 6 | Pin-Cotter |
| 3:2 | 116-4279 | 2 | Bearing-Flange | 12 | 142-4713 | 1 | Spring-Torsion |
| 4 | 142-4712 | 2 | Spring-Compression | 13 | 135-6261 | 1 | Screw-HHF |
| 5 | 135-6109 | 4 | Nut-Hex Flange | 14 | 142-6198 | 1 | Spacer-Brake, Interlock |
| 6 | 142-4674 | 1 | Spacer-Brake | 15 | 142-6197 | 1 | Plate-Brake, Interlock |
| 7 | 131-9663 | 1 | Screw-CARR | | | | |

Electrical Assembly



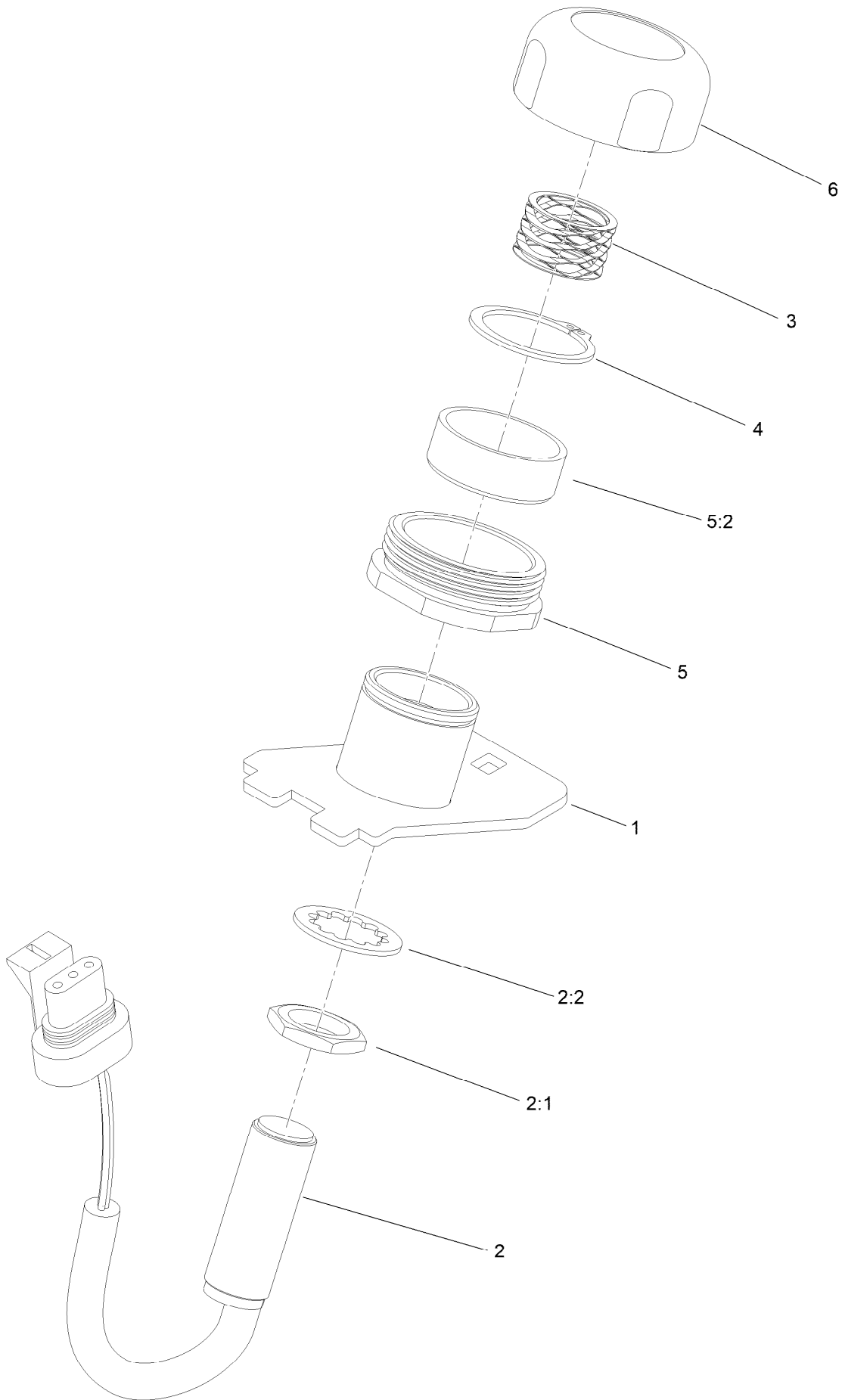
Electrical Assembly (continued)

| <i>Ref.</i> | <i>Part Number</i> | <i>Qty.</i> | <i>Description</i> | <i>Ref.</i> | <i>Part Number</i> | <i>Qty.</i> | <i>Description</i> |
|-------------|--------------------|-------------|----------------------------|-------------|--------------------|-------------|---|
| 1 | 126-6285 | 1 | Ignition Switch ASM | 22 | 360-0497 | 1 | O-Ring |
| 1:2 | 108-8660 | 1 | Nut-Mounting | 23 | 142-7061 | 1 | Knob-Indicating |
| 1:3 | 106-5270 | 1 | Ignition Key Set | 24 | 142-7364 | 1 | Harness-Jr36 |
| 1:4 | 108-8659 | 1 | Washer-Backup | 25 | | 1 | Switch-Foot ■ |
| 3 | 82-2190 | 1 | Switch-Bail | 26 | 142-7224 | 1 | Harness-Spreader Motor |
| 5 | 142-7882 | 1 | Strap-Battery | 27 | 1-633396 | 1 | Clip-Loom |
| 6 | 135-8898 | 1 | Cable-Sensor, Trail Tech | 28 | 135-6108 | 3 | Nut-Hex Flange |
| 7 | 135-5259 | 1 | Meter-Tach/Hour | 29 | 142-9333 | 1 | Harness-Capacitor |
| 8 | 142-5553-05 | 1 | Mount-Display | 29:2 | 32180-213 | 1 | Tubing, Conv, 5/8", Hi Temp, Uv Inhibit ● |
| 9 | 135-8900 | 1 | Striker-Head Only | 29:3 | 142-8083 | 1 | Capacitor 36000Uf 40V |
| 10 | 100-8469 | 1 | Switch-Rocker | 29:4 | 142-9340 | 1 | Boot-Capacitor |
| 11 | 126-0759 | 2 | Washer-Flat | 29:5 | 32181-017 | 1 | Tie-Stainless |
| 12 | 135-6357 | 2 | Screw-HSH | 29:6 | 47-2830 | 2 | Screw |
| 13 | 135-6221 | 3 | Screw-HHF | 30 | 142-8944 | 1 | Clamp-R, Cushion |
| 14 | 142-6690 | 1 | Pad-Display Mount | 31 | 135-6356 | 1 | Screw-HH |
| 15 | 135-6118 | 1 | Wire-Tachometer | 32 | 135-6342 | 1 | Nut-Hex Flange |
| 16 | 3290-378 | 1 | Tie-Cable | 33 | 142-5490 | 1 | Screw-HWH |
| 18 | 142-7313 | 1 | Bracket-Cover, Fuse | 34 | 146-0151 | 1 | Cover-Battery |
| 19 | 142-6905 | 1 | Controller-Motor, Spreader | 99 | 135-7317 | 1 | Manual-User, Striker ● |
| 20 | 112-3169 | 2 | Screw-HHF, Serrated | 99 | 135-7318 | 1 | Card-Striker, Quick Start ● |
| 21 | 520-0006 | 2 | Nut-Hex, Nylock | | | | |

● Not illustrated

■ Not serviced separately

Foot Switch Assembly



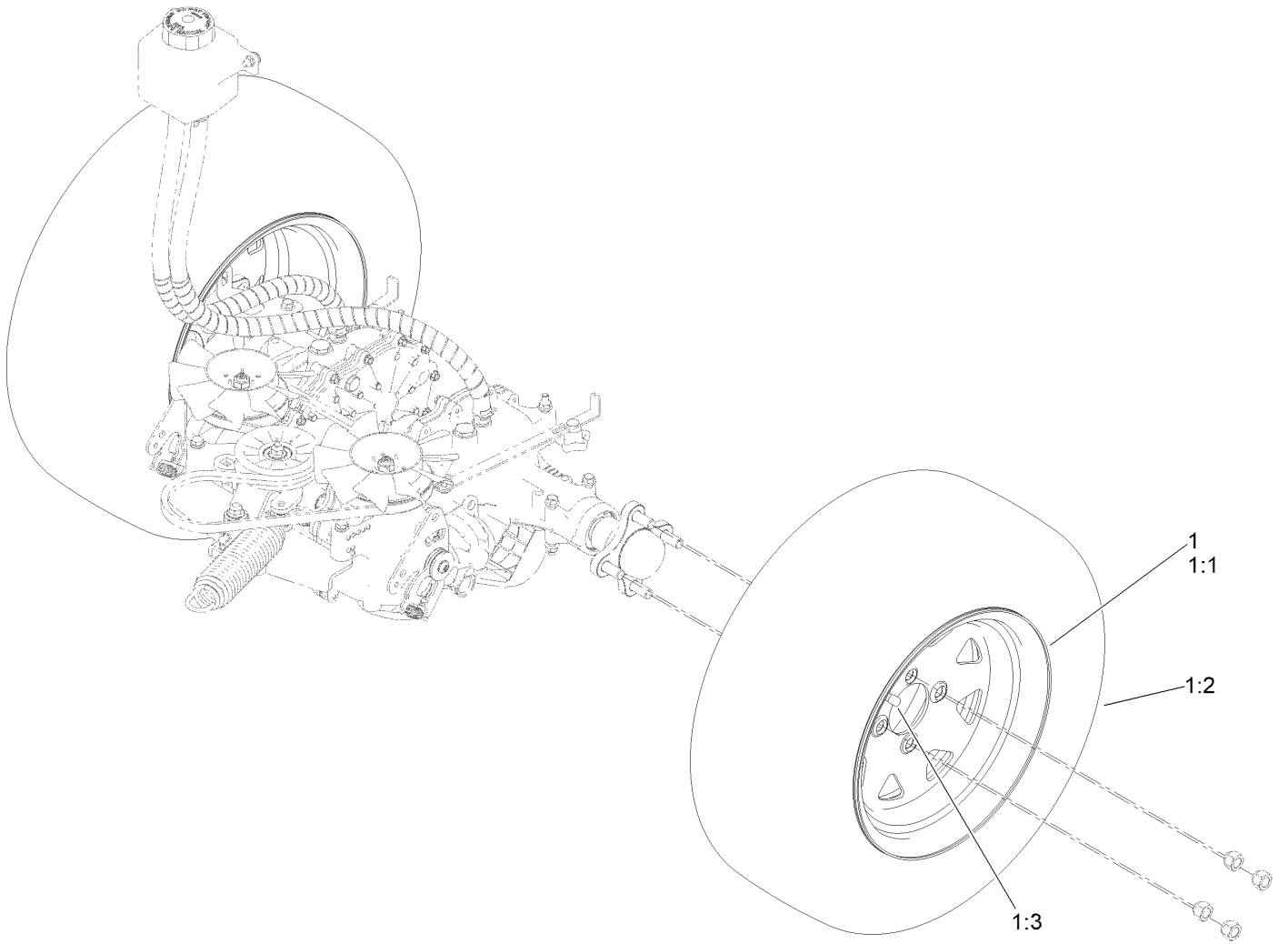
Foot Switch Assembly (continued)

| <i>Ref.</i> | <i>Part Number</i> | <i>Qty.</i> | <i>Description</i> | <i>Ref.</i> | <i>Part Number</i> | <i>Qty.</i> | <i>Description</i> |
|-------------|--------------------|-------------|-----------------------------|-------------|--------------------|-------------|---------------------|
| 1 | 142-9322 | 1 | Mount-Switch, Foot | 4 | 142-9329 | 1 | Ring-Retaining, EXT |
| 2 | 115-5300 | 1 | Proximity Switch ASM | 5 | 142-9330 | 1 | Guide-Button |
| 2:1 | 117-3207 | 2 | Nut-Hex | 5:2 | 142-9326 | 1 | Bushing-Sleeve |
| 2:2 | 117-3208 | 2 | Washer-Lock, Internal Tooth | 6 | 142-9327 | 1 | Button-Foot |
| 3 | 142-9328 | 1 | Spring-Wave | | | | |

Controls Assembly (continued)

| <i>Ref.</i> | <i>Part Number</i> | <i>Qty.</i> | <i>Description</i> | <i>Ref.</i> | <i>Part Number</i> | <i>Qty.</i> | <i>Description</i> |
|-------------|--------------------|-------------|-------------------------------|-------------|--------------------|-------------|---------------------------------|
| 1 | 142-7599 | 1 | Tower-ASM W/Decal | 8 | 142-7601 | 1 | Bar-Speed, ASM |
| 1:2 | 142-8355 | 1 | Decal-Control Panel | 9 | 142-7600-05 | 1 | Bar-Reference |
| 1:3 | 142-7574 | 3 | Nut-Clinch,Hex | 10 | 135-6208 | 10 | Screw-HHF |
| 1:4 | 142-8079 | 1 | Decal-Fuse,Main | 11 | 135-6110 | 16 | Nut-Hex Flange |
| 1:5 | 142-8081 | 1 | Decal-Fuse,Solid State | 12 | 3290-461 | 4 | Washer-Spring |
| 2 | 142-4200 | 2 | Pivot-Control, Handle | 13 | 142-5494 | 2 | Knob-Fluted |
| 3 | 142-3696 | 1 | Handle-Control, RH ASM | 14 | HDW19385 | 2 | Washer-Flat |
| 3:2 | 1-633257 | 1 | Grip-Control, Motion | 15 | HDW17725 | 2 | HHCS,3/8-16X3-1/2,ST/ST 18-8 |
| 3:3 | 126-1963 | 2 | Bushing-Pivot | 16 | 142-6693 | 1 | Control-Throttle |
| 4 | 142-6192 | 2 | Arm-Control, Rtn | 17 | 109-8747 | 1 | Control,Choke |
| 5 | 142-3697 | 1 | Handle-Control, LH ASM | 18 | 142-7585 | 2 | Magnet-Stud, Threaded |
| 5:2 | 1-633257 | 1 | Grip-Control, Motion | 19 | 142-9349-05 | 1 | Plate-Knee Pad [blk-Txt] |
| 5:3 | 126-1963 | 2 | Bushing-Pivot | 20 | 135-6374 | 4 | Screw-HSBH |
| 6 | 142-5498 | 4 | Nut-Lock, NI | 21 | 135-6342 | 4 | Nut-Hex Flange |
| 7 | 142-4625 | 2 | Linkage-Motion Control ASM | 24 | 126-0980 | 4 | Screw-CARR |
| 7:1 | 135-5257 | 1 | Balljoint-SS | 25 | 126-2712 | 2 | Screw-HHF |
| 7:2 | 142-4626 | 1 | Rod-Control, Motion | 26 | 146-0776 | 1 | Decal-Spray Chart |
| 7:3 | 135-9812 | 1 | Balljoint-SS | 27 | 112-7069 | 1 | Grommet |
| 7:4 | 107-0282 | 3 | Nut-Hex | 28 | 142-8050 | 1 | Decal-Service Aid |
| 7:5 | 142-6894 | 1 | Spring-Compression | 29 | 103-9511 | 2 | Nut-Lock, NI |
| 7:6 | 107-0279 | 1 | Washer | | | | |

Tire Assembly



Tire Assembly (continued)

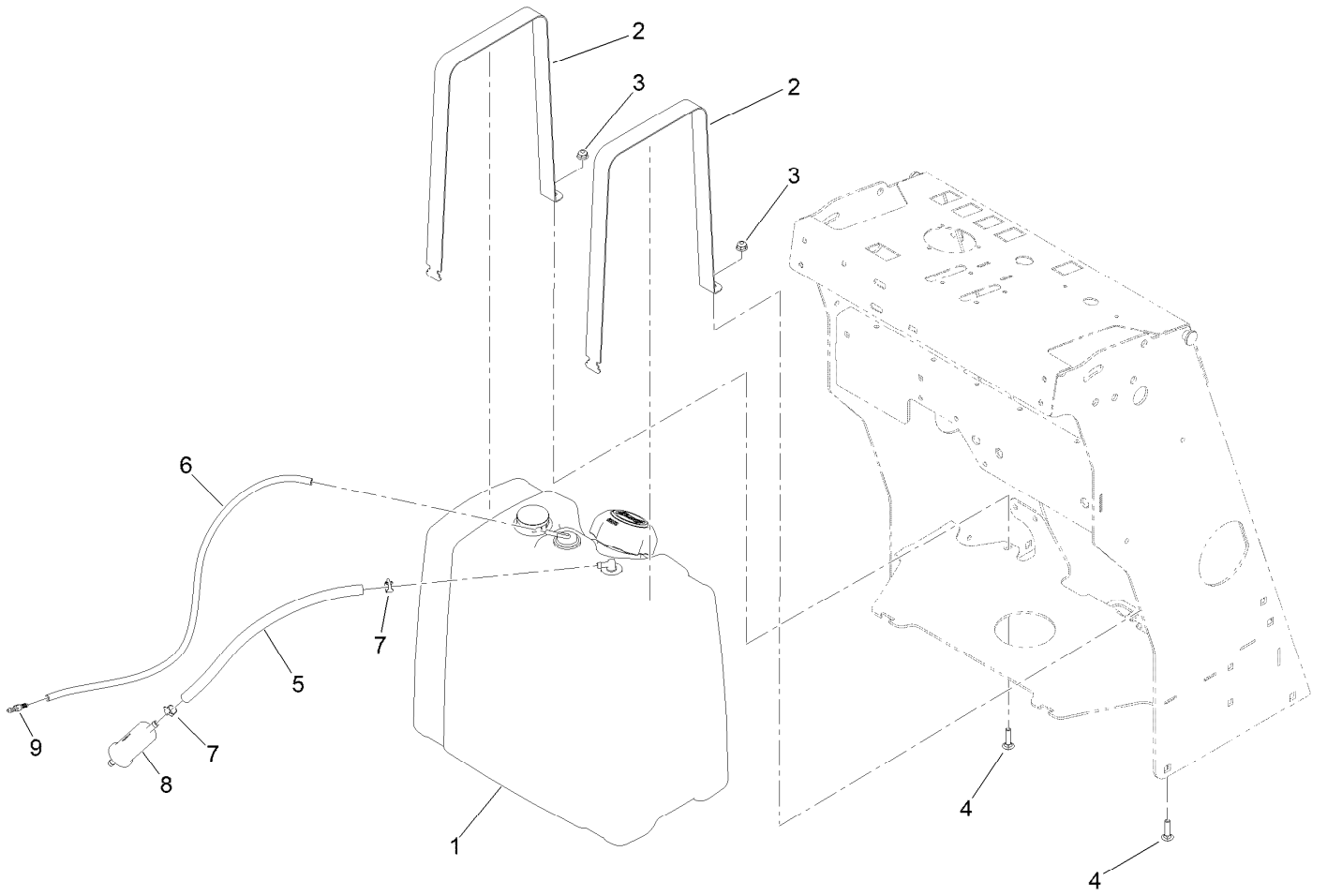
| <i>Ref.</i> | <i>Part Number</i> | <i>Qty.</i> | <i>Description</i> | <i>Ref.</i> | <i>Part Number</i> | <i>Qty.</i> | <i>Description</i> |
|-------------|--------------------|-------------|--------------------|-------------|--------------------|-------------|--------------------|
| 1 | 142-5569 | 2 | Wheel And Tire ASM | 1:2 | 135-6093 | 1 | Tire |
| 1:1 | 142-5570 | 1 | Wheel | 1:3 | 232-27 | 1 | Stem-Valve |

Caster Wheels Assembly (continued)

| <i>Ref.</i> | <i>Part Number</i> | <i>Qty.</i> | <i>Description</i> | <i>Ref.</i> | <i>Part Number</i> | <i>Qty.</i> | <i>Description</i> |
|-------------|--------------------|-------------|----------------------------|-------------|--------------------|-------------|---------------------|
| 1 | 142-4545-05 | 1 | Weld-Caster, LH [blk-Txt] | 9:1 | | 1 | ASM-Whl And Tire ● |
| 2 | 142-4547-05 | 1 | Weld-Caster, RH [blk-Txt] | 9:1:1 | 1-633585 | 2 | Bearing-Cone, Taper |
| 3 | 135-0355 | 2 | Seal-Grease | 9:1:2 | 126-5361 | 1 | Axle Caster ASM |
| 4 | 103-9028 | 4 | Bearing-Roller, Cone Taper | 9:1:3 | 103-3051 | 1 | Spacer-Nut |
| 5 | 3256-8 | 2 | Washer-Flat | 9:1:4 | 103-0063 | 2 | Seal-Caster |
| 6 | 1-633508 | 12 | Washer-Bellville | 9:2 | 103-2768 | 2 | Guard-Seal |
| 7 | 3296-51 | 2 | Nut-Lock, NI | 9:3 | 99-5107 | 1 | Nut-Lock |
| 8 | 142-7588 | 2 | Cap-Tube, Caster | 9:4 | 325-39 | 1 | Screw-HH |
| 9 | 142-8942 | 2 | ASM-Whl And Tire W/Axle | | | | |

● Not serviced separately

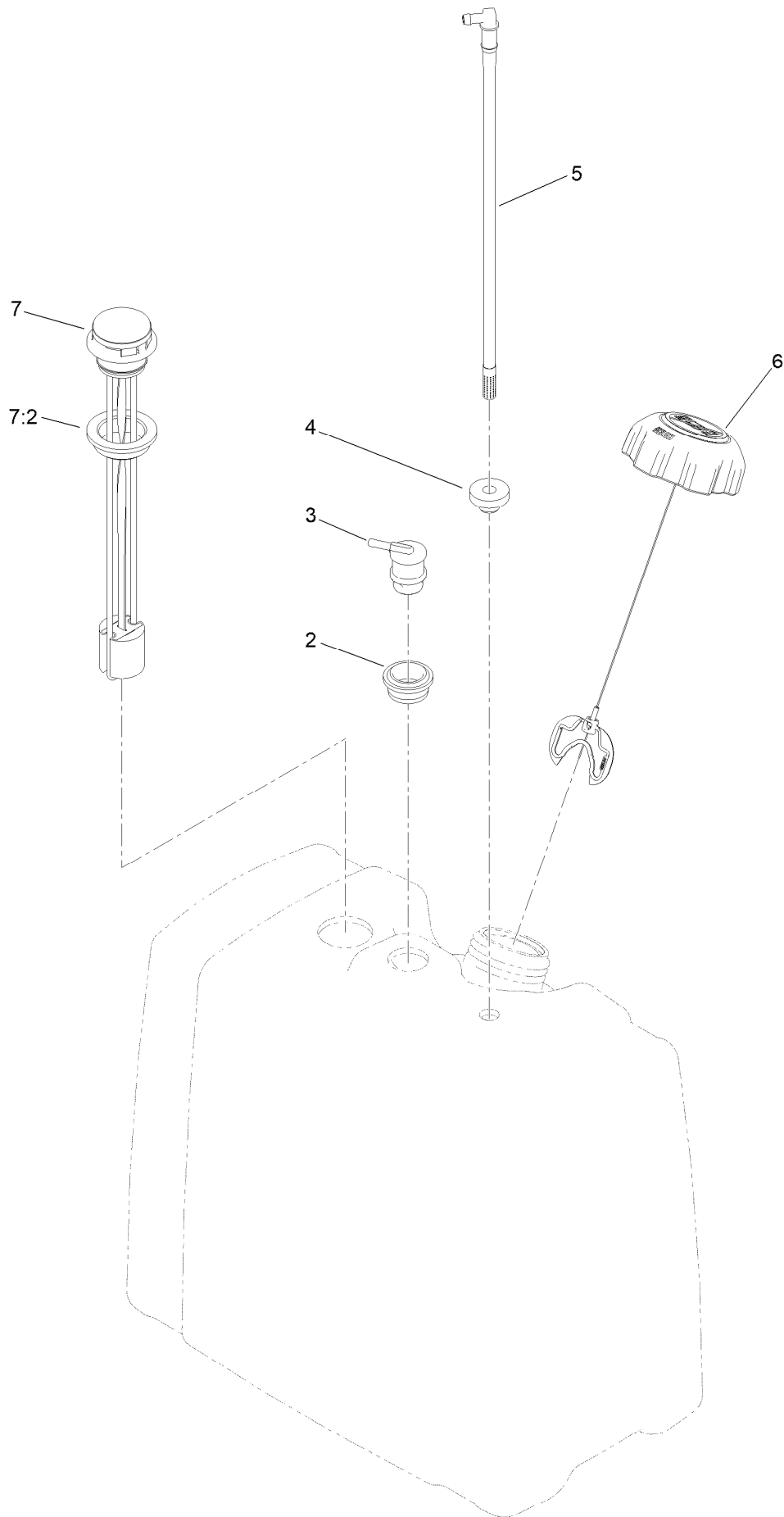
Fuel Tank Assembly



Fuel Tank Assembly (continued)

| <i>Ref.</i> | <i>Part Number</i> | <i>Qty.</i> | <i>Description</i> | <i>Ref.</i> | <i>Part Number</i> | <i>Qty.</i> | <i>Description</i> |
|-------------|--------------------|-------------|--------------------|-------------|--------------------|-------------|--------------------|
| 1 | 142-7602 | 1 | ASM-Tank, Fuel | 6 | 110-8255 | 1 | Hose-Fuel |
| 2 | 142-7332 | 2 | Strap-Tank | 7 | 2412-98 | 2 | Clamp-Hose |
| 3 | 135-6108 | 2 | Nut-Hex Flange | 8 | 135-6687 | 1 | Filter-Fuel |
| 4 | 126-1455 | 2 | Screw-CARR | 9 | 120-1996 | 1 | Fitting-STR |
| 5 | 109-0297 | 1 | Hose-Fuel | | | | |

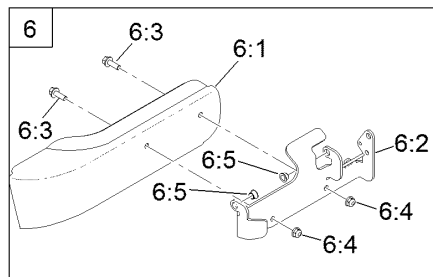
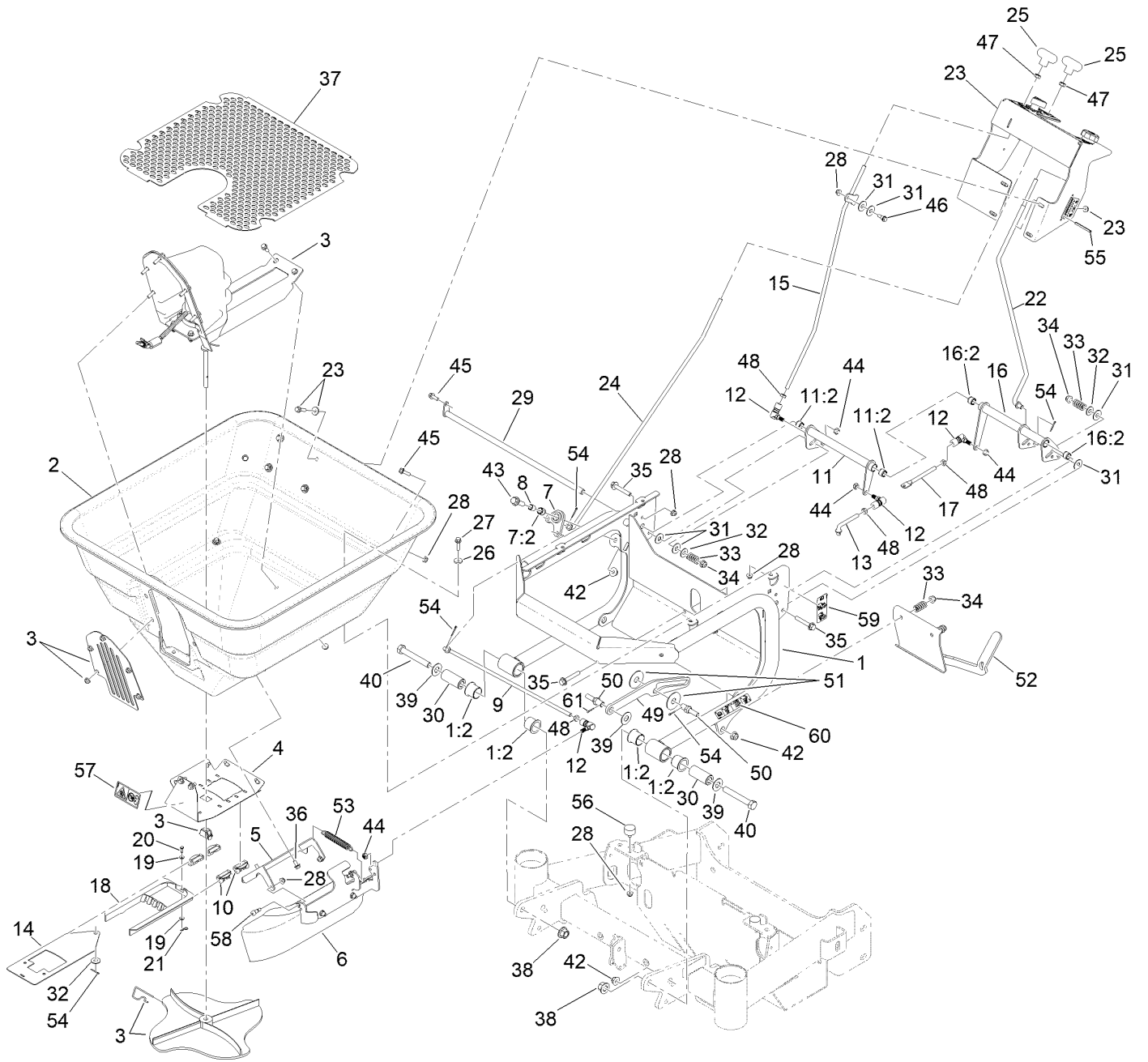
Fuel Tank Assembly No. 142-7602



Fuel Tank Assembly No. 142-7602 (continued)

| <i>Ref.</i> | <i>Part Number</i> | <i>Qty.</i> | <i>Description</i> | <i>Ref.</i> | <i>Part Number</i> | <i>Qty.</i> | <i>Description</i> |
|-------------|--------------------|-------------|--------------------|-------------|--------------------|-------------|--------------------|
| 2 | 114-0284 | 1 | Grommet | 6 | 137-4127 | 1 | Cap-Fuel |
| 3 | 119-3547 | 1 | Valve-Vent, Fuel | 7 | 119-0509 | 1 | Gauge ASM |
| 4 | 46-6560 | 1 | Bushing | 7:2 | 119-0508 | 1 | Seal |
| 5 | 115-9044 | 1 | Pipe-Stand | | | | |

Spreader Assembly

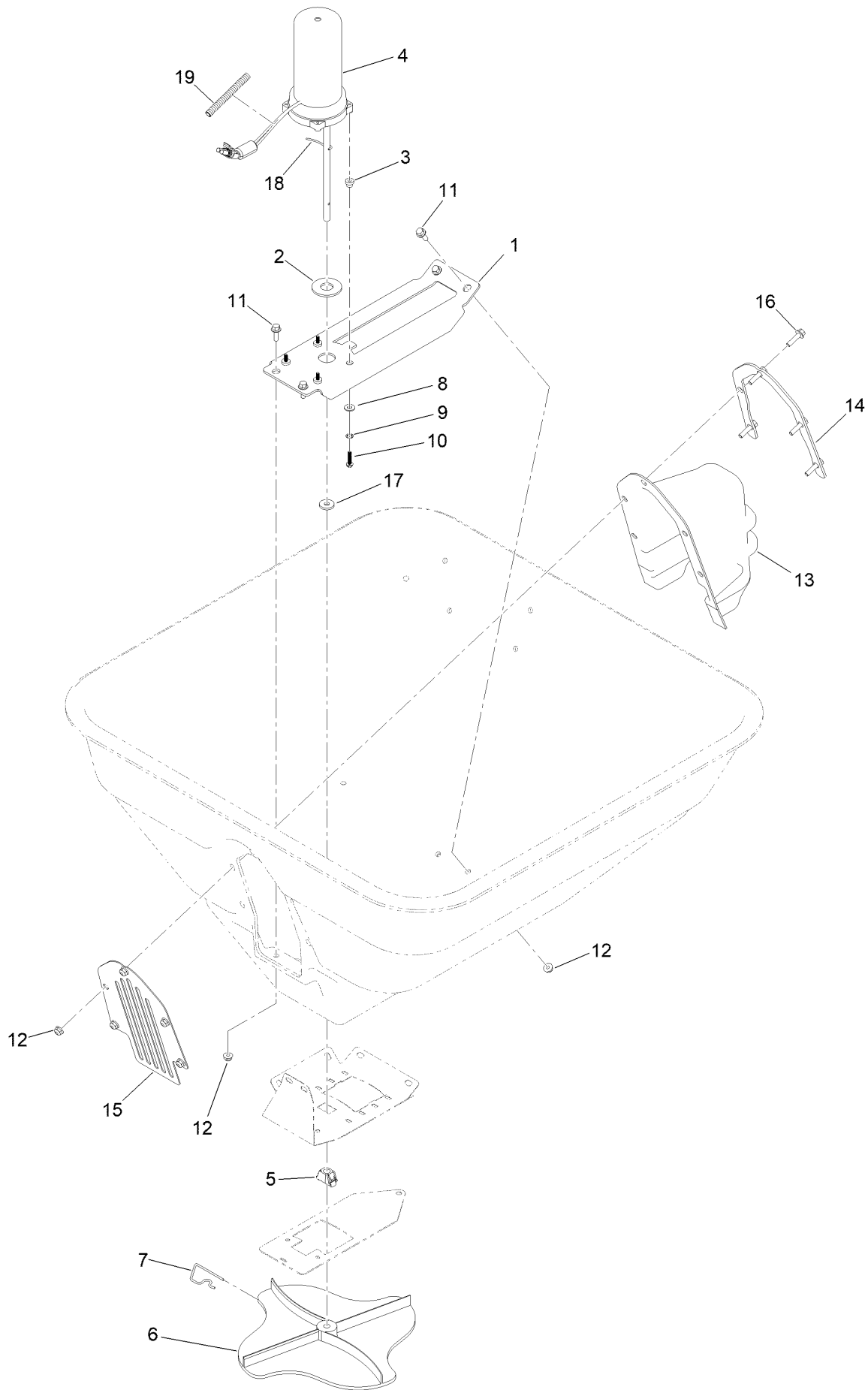


Spreader Assembly (continued)

| <i>Ref.</i> | <i>Part Number</i> | <i>Qty.</i> | <i>Description</i> | <i>Ref.</i> | <i>Part Number</i> | <i>Qty.</i> | <i>Description</i> |
|-------------|--------------------|-------------|------------------------------------|-------------|--------------------|-------------|-------------------------------------|
| 1 | 142-7344 | 1 | Frame-Hopper | 27 | HDW27147 | 4 | Screw-HHF |
| 1:2 | 126-1963 | 4 | Bushing-Pivot | 28 | 135-6108 | 12 | Nut-Hex Flange |
| 2 | 142-4649 | 1 | Hopper -150 Lb | 29 | 142-4031 | 1 | Shaft-Control, Hopper |
| 3 | | 1 | ASM-Motor, Hopper ● | 30 | 142-4293 | 2 | Spacer-Pivot, Hopper |
| 4 | 142-3991 | 1 | Plate-Hopper, Bottom | 31 | 93-1633 | 6 | Washer |
| 5 | 142-7872 | 1 | Bracket-Hopper Deflector | 32 | HDW14535 | 3 | Flat Washer, 5/16 Nom,ST/ST,18-8 |
| 6 | | 1 | ASM-Deflector, Side ● | 33 | 142-6894 | 4 | Spring-Compression |
| 6:1 | 146-0145 | 1 | Chute-Deflector | 34 | 135-6109 | 4 | Nut-Hex Flange |
| 6:2 | 146-0146 | 1 | Bracket-Deflector, Side | 35 | 126-2711 | 4 | Screw-HHF |
| 6:3 | 135-6221 | 2 | Screw-HHF | 36 | 142-5490 | 8 | Screw-HWH |
| 6:4 | 135-6108 | 2 | Nut-Hex Flange | 37 | 142-4696 | 1 | Screen-Hopper, Medium |
| 6:5 | 138-5538 | 2 | Bushing-Flange | 38 | 135-6111 | 2 | Nut-Hex Flange |
| 7 | 142-7614 | 1 | Crank-Defelctor | 39 | HDW14428 | 3 | Washer |
| 7:2 | 142-3932 | 1 | Bushing | 40 | 142-7326 | 2 | Screw-HH |
| 8 | 142-7618 | 1 | Bushing-Pivot, Deflector | 42 | 135-6110 | 3 | Nut-Hex Flange |
| 9 | 142-3961 | 1 | Linkage-Deflector, Lower | 43 | 135-6211 | 1 | Screw-HHF |
| 10 | 142-3316 | 4 | Guide-Rate, Gate | 44 | 142-5498 | 4 | Nut-Lock, NI |
| 11 | 142-3927 | 1 | Crank-Gate, Hopper | 45 | 135-6221 | 3 | Screw-HHF |
| 11:2 | 142-3932 | 2 | Bushing | 46 | 42-3560 | 1 | Bolt-Shoulder |
| 12 | 135-5718 | 4 | Ball Joint-Quick Disconnect, SS | 47 | 363-1684 | 2 | Nut-Hex |
| 13 | 142-3933 | 1 | Linkage-Gate, Lower | 48 | 107-0282 | 4 | Nut-Hex |
| 14 | 142-3942 | 1 | Rate-Gate | 49 | 142-6891 | 1 | Strap-Hopper |
| 15 | 142-8937 | 1 | Linkage-Gate, Upper | 50 | 142-6892 | 2 | Pin-Pivot |
| 16 | 142-3946 | 1 | Crank-Diffuser | 51 | 142-7591 | 2 | Washer-Flat, 1/2, SS |
| 16:2 | 142-3932 | 2 | Bushing | 52 | 142-7495-05 | 1 | Latch-Hopper [blk-Txt] |
| 17 | 142-3949 | 1 | Linkage-Diffuser, Lower | 53 | 142-8921 | 1 | Spring-Extension |
| 18 | 142-3406 | 1 | Diffuser | 54 | HDW14430 | 4 | Cotter Pin 5/64X3/4 18-8 |
| 19 | 126-0759 | 2 | Washer-Flat | 55 | 142-7053 | 1 | Pin-Roll, 3/16 X 2.0 |
| 20 | 126-3729 | 1 | Pin-Clevis | 56 | 240-14 | 2 | Bumper-Rubber |
| 21 | 126-1631 | 1 | Pin-Cotter, Hair | 57 | 135-6725 | 1 | Decal-Dismemberment Hazard |
| 22 | 142-8939 | 1 | Linkage-Diffuser, Upper | 58 | 119-4881 | 2 | Bolt-Shoulder |
| 23 | | 1 | ASM-Console, Hopper ● | 59 | 146-0725 | 1 | Decal-Hopper Rotate |
| 24 | 142-8936 | 1 | Linkage-Deflector, Upper | 60 | 146-1742 | 1 | Decal-Hopper Latch |
| 25 | 142-5558 | 2 | Knob-T | 61 | 132-0707 | 2 | Pin-Cotter |
| 26 | 135-6341 | 4 | Washer | | | | |

● Not serviced separately

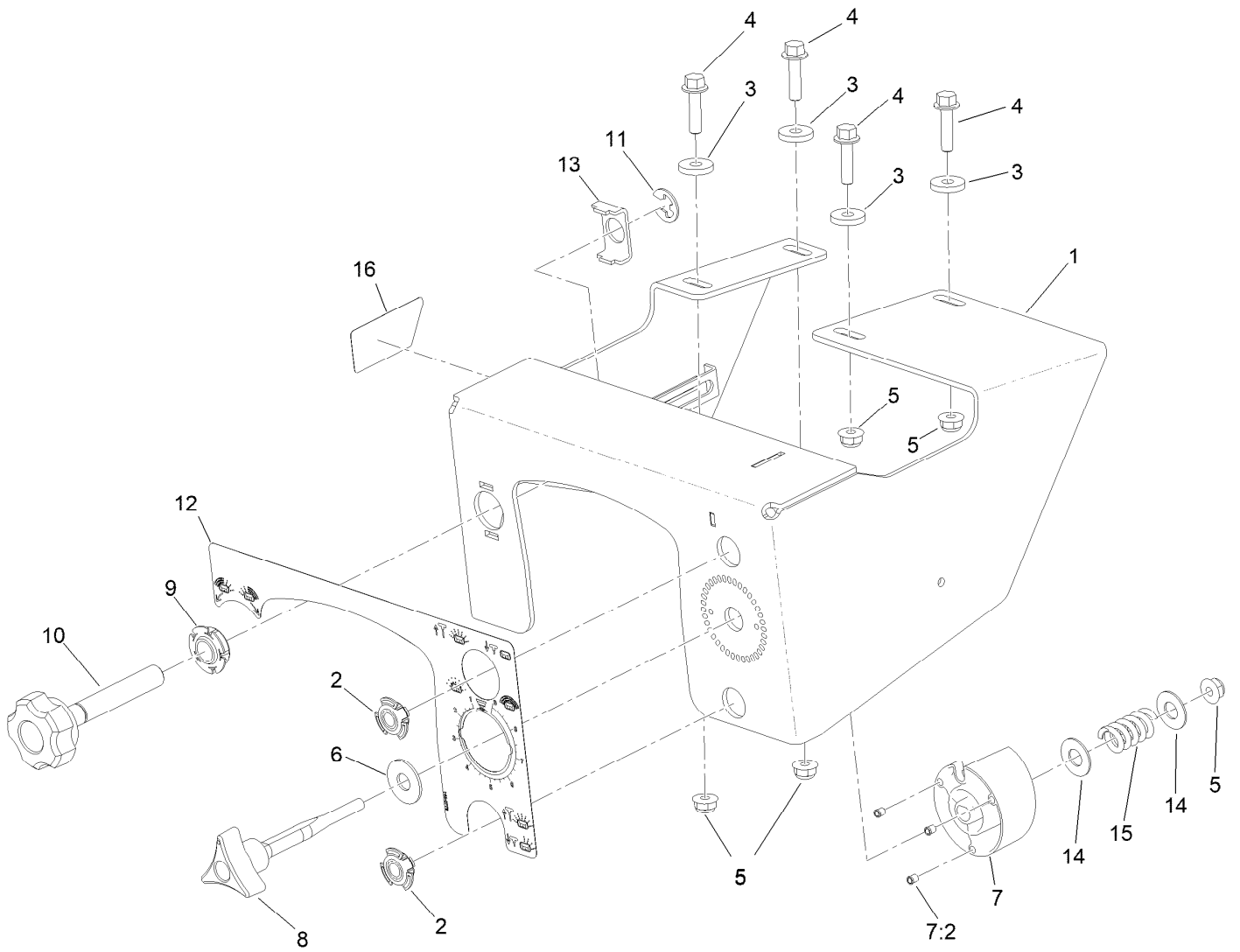
Hopper Motor Assembly



Hopper Motor Assembly (continued)

| <i>Ref.</i> | <i>Part Number</i> | <i>Qty.</i> | <i>Description</i> | <i>Ref.</i> | <i>Part Number</i> | <i>Qty.</i> | <i>Description</i> |
|-------------|--------------------|-------------|-----------------------|-------------|--------------------|-------------|---------------------|
| 1 | 142-4686 | 1 | Bracket-Mount, Motor | 11 | 135-6221 | 4 | Screw-HHF |
| 2 | 83-2400 | 1 | Spacer | 12 | 135-6108 | 9 | Nut-Hex Flange |
| 3 | 135-3989 | 4 | Spacer-Flanged | 13 | 142-8924 | 1 | Cover-Motor |
| 4 | 126-0379 | 1 | Motor-Spreader | 14 | 126-6334 | 1 | Flange-Cover, Motor |
| 5 | 142-4042 | 1 | Hopper Bottom Bearing | 15 | 142-4721 | 1 | Cover-Front, Motor |
| 6 | 142-3506 | 1 | Spinner-Spreader | 16 | HDW27147 | 5 | Screw-HHF |
| 7 | 142-3541 | 1 | Clip-Spinner | 17 | 142-3665 | 1 | Washer-Felt |
| 8 | 360-0140 | 4 | Washer-Flat | 18 | 142-3666 | 1 | Wire-Agitator |
| 9 | 363-8641 | 4 | Washer-Lock, Int | 19 | 142-6683 | 1 | Loom-Split |
| 10 | 739001 | 4 | Screw-SHWH | | | | |

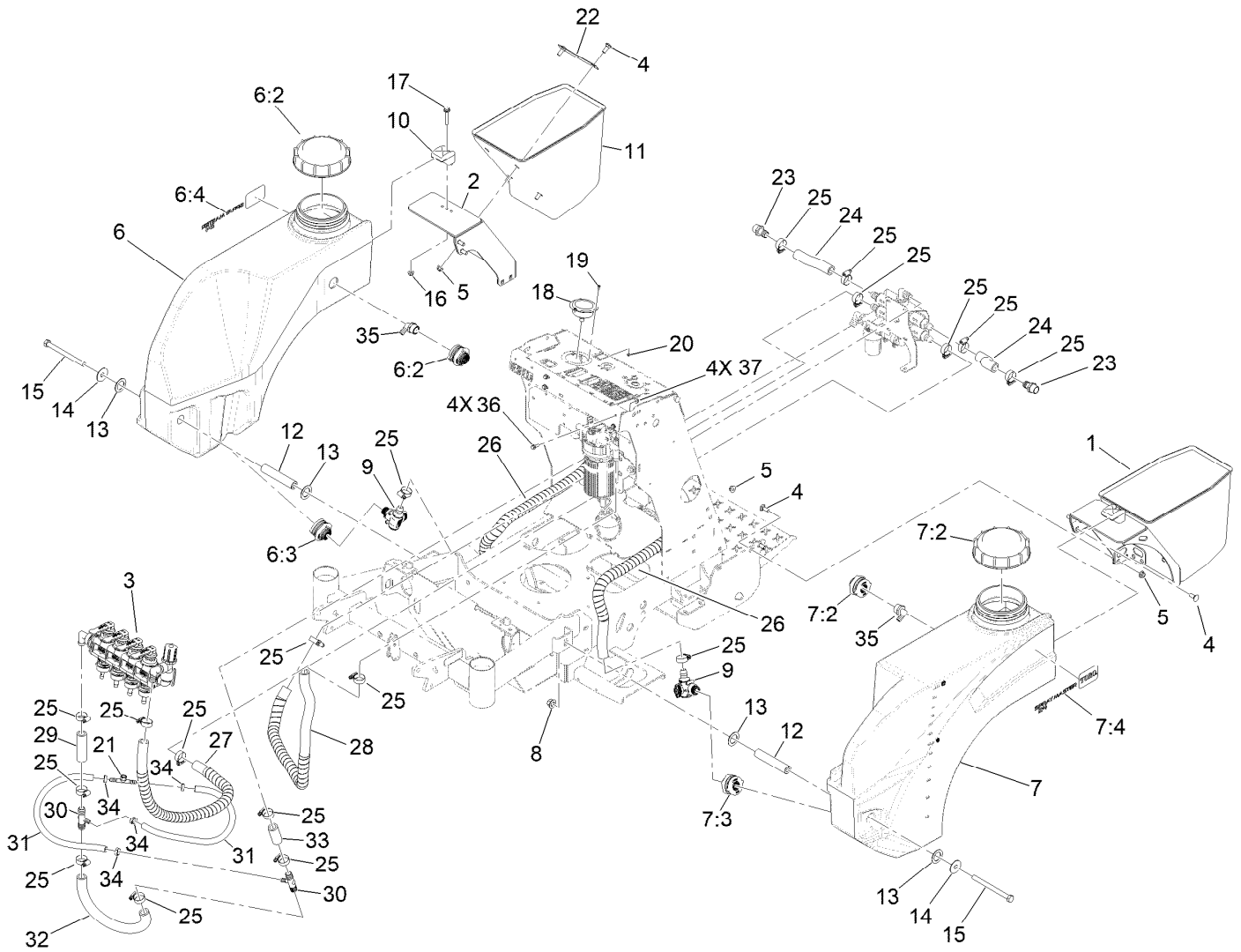
Hopper Console Assembly



Hopper Console Assembly (continued)

| <i>Ref.</i> | <i>Part Number</i> | <i>Qty.</i> | <i>Description</i> | <i>Ref.</i> | <i>Part Number</i> | <i>Qty.</i> | <i>Description</i> |
|-------------|--------------------|-------------|----------------------|-------------|--------------------|-------------|---------------------------|
| 1 | 142-8934 | 1 | Console-Hopper Jr36 | 9 | 126-5820 | 1 | Bearing-Spherical |
| 2 | 142-3955 | 2 | Bearing-Spherical | 10 | 142-7037 | 1 | Knob-Diffuser |
| 3 | 135-6341 | 4 | Washer | 11 | 142-4698 | 1 | Ring-E |
| 4 | HDW27147 | 4 | Screw-HHF | 12 | 146-0773 | 1 | Decal-Console |
| 5 | 135-6108 | 5 | Nut-Hex Flange | 13 | 142-7054 | 1 | Stop-Diffuser |
| 6 | 93-1633 | 1 | Washer | 14 | HDW05859 | 2 | Washer,Flat,3/8ST/ST 18-8 |
| 7 | 142-4642 | 1 | Dial-Rate | 15 | 142-6894 | 1 | Spring-Compression |
| 7:2 | 142-4641 | 3 | Plunger-Spring, Ball | 16 | 142-9684 | 1 | Decal-Pattern Indicator |
| 8 | 142-7035 | 1 | Knob-Rate | | | | |

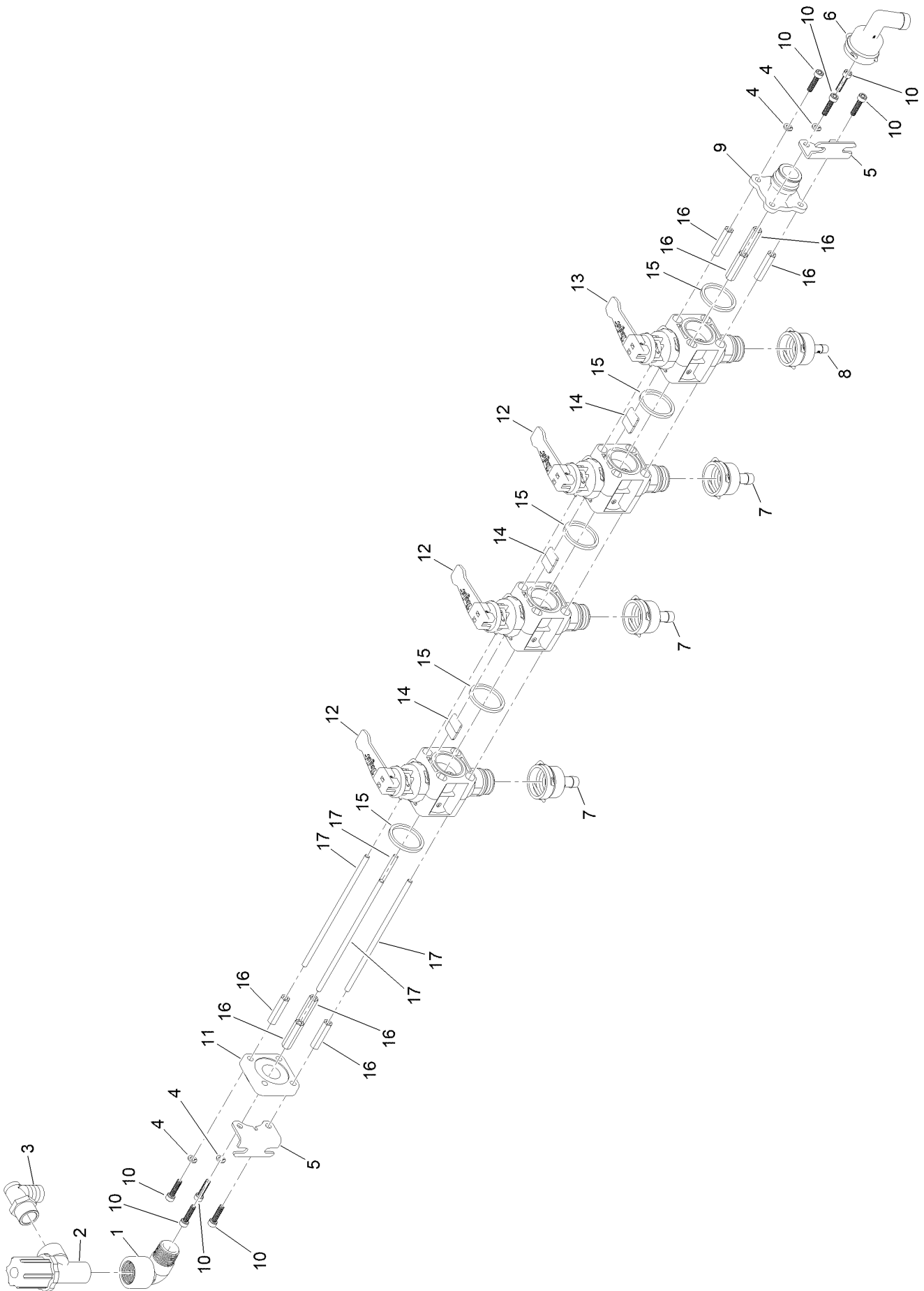
Sprayer Tanks Assembly



Sprayer Tanks Assembly (continued)

| <i>Ref.</i> | <i>Part Number</i> | <i>Qty.</i> | <i>Description</i> | <i>Ref.</i> | <i>Part Number</i> | <i>Qty.</i> | <i>Description</i> |
|-------------|--------------------|-------------|----------------------------|-------------|--------------------|-------------|-------------------------|
| 1 | 142-6357 | 1 | Fender-Lt | 17 | 126-2711 | 2 | Screw-HHF |
| 2 | 142-6359 | 1 | Fender-Rt | 18 | 126-4110 | 1 | Gauge-Pressure |
| 3 | 142-7050 | 1 | ASM-Manifold, Spray | 19 | 135-6357 | 3 | Screw-HSH |
| 4 | 126-0980 | 16 | Screw-CARR | 20 | 140-3749 | 3 | Nut-Lock Rohs |
| 5 | 135-6110 | 16 | Nut-Hex Flange | 21 | 126-2348 | 1 | Fitting-Tee |
| 6 | 142-7857 | 1 | Tank-12Gal, Rt | 22 | 142-6890 | 4 | Plate-Backing, Fert Box |
| 6:2 | 135-5916 | 1 | Cap-Tank, Spray | 23 | 41257 | 2 | Hosebarb |
| 6:3 | 126-4393 | 2 | Fitting-Bulkhead | 24 | 142-7056 | 2 | Hose-Return |
| 6:4 | 142-9318 | 1 | Decal-Spraymaster, 24 | 25 | 2412-129 | 18 | Clamp-Hose |
| 7 | 142-7859 | 1 | Tank-12Gal, Lt | 26 | 142-7080 | 2 | Hose-Spray, Wrapped |
| 7:2 | 135-5916 | 1 | Cap-Tank, Spray | 27 | 142-7613 | 1 | Hose-Spray, Wrapped |
| 7:3 | 126-4393 | 2 | Fitting-Bulkhead | 28 | 135-7087 | 1 | Hose-Spray, Wrapped |
| 7:4 | 142-9317 | 1 | Decal-Spraymaster, 24 | 29 | 142-6907 | 1 | Hose-Spray |
| 8 | 135-6111 | 2 | Nut-Hex Flange | 30 | 142-4450 | 2 | Tee-Hose Barb |
| 9 | 142-4468 | 2 | Valve-3 Way | 31 | 142-7062 | 2 | Hose-Spray |
| 10 | 107-4543 | 2 | Clamp | 32 | 135-6164 | 1 | Hose-Spray |
| 11 | 142-6364 | 2 | Box-Fertilzer, Jr36 | 33 | 142-7066 | 1 | Hose-Spray |
| 12 | 142-6361 | 2 | Spacer-Tank | 34 | 135-5757 | 4 | Clamp-Oetiker, 167 |
| 13 | 131-5905 | 4 | Washer-Rubber | 35 | 135-5744 | 2 | Fitting-Elbow, 90 |
| 14 | 142-7591 | 2 | Washer-Flat, 1/2, SS | 36 | 135-6221 | 4 | Screw-HHF |
| 15 | HDW17767 | 2 | HHCS, 1/2-13X6 ST/ST, 18-8 | 37 | 135-6108 | 4 | Nut-Hex Flange |
| 16 | 135-6109 | 2 | Nut-Hex Flange | | | | |

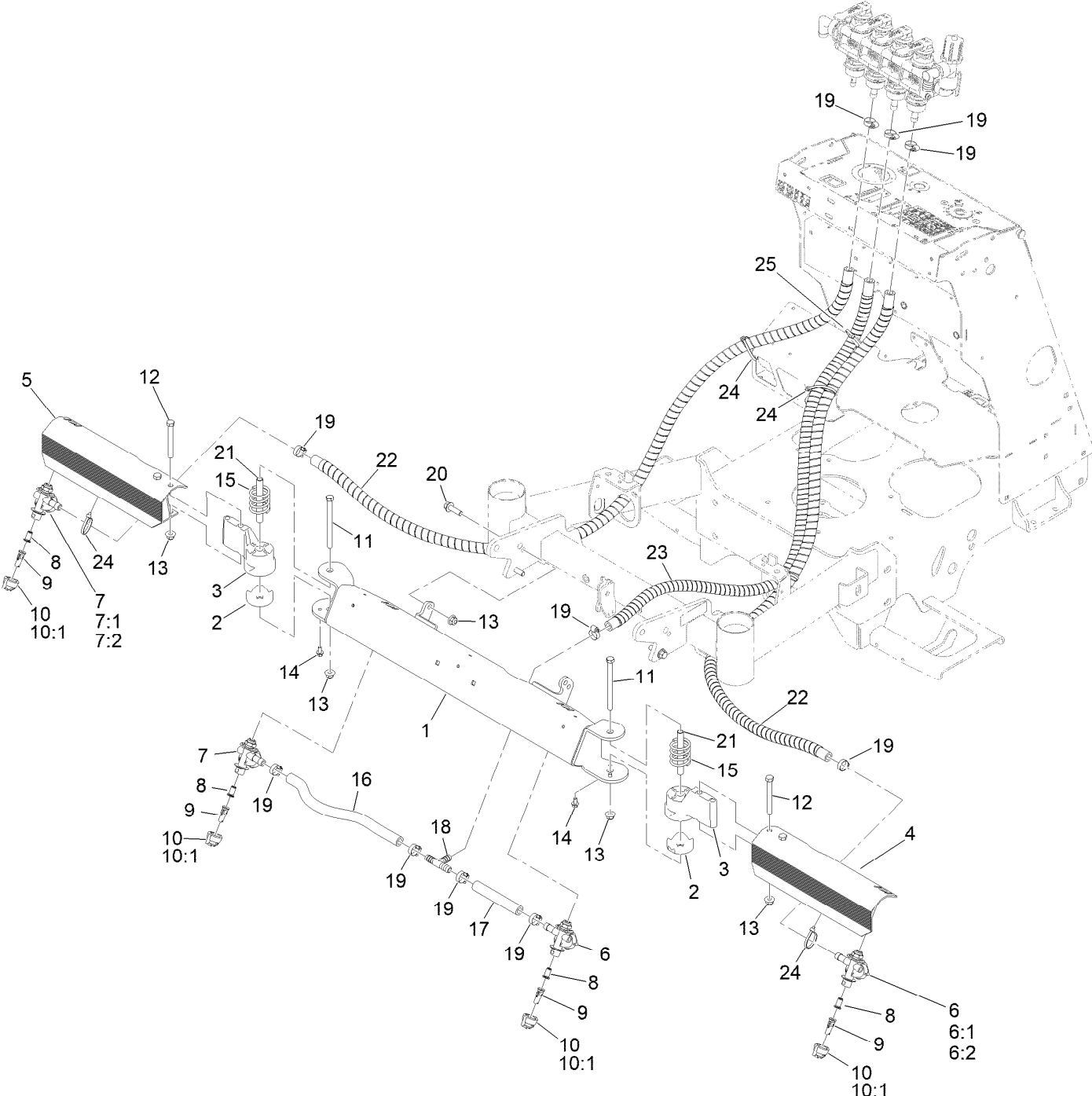
Sprayer Manifold Assembly No. 142-7050



Sprayer Manifold Assembly No. 142-7050 (continued)

| <i>Ref.</i> | <i>Part Number</i> | <i>Qty.</i> | <i>Description</i> | <i>Ref.</i> | <i>Part Number</i> | <i>Qty.</i> | <i>Description</i> |
|-------------|--------------------|-------------|-----------------------------------|-------------|--------------------|-------------|---------------------------------|
| 1 | 132-7706 | 1 | Elbow-90 DEG | 10 | 142-6348 | 8 | Screw-Hscs 6 MM X 25.0 MM SS |
| 2 | 135-5736 | 1 | Valve-Throttle | 11 | 142-7041 | 1 | Cap-End, 3/4 Npt, Female |
| 3 | 135-5772 | 1 | Fitting-Elbow, 90 | 12 | 142-7042 | 3 | ASM-Valve Section, Grey |
| 4 | 142-4415 | 4 | Washer | 13 | 142-7043 | 1 | ASM-Valve Section, Black |
| 5 | 142-4416 | 2 | Bracket-Mount | 14 | 142-7496 | 3 | Alignment Piece |
| 6 | 142-5591 | 1 | Kit-Hose Barb, 3/4 90, Qc | 15 | 142-7497 | 5 | Gasket |
| 7 | 142-6187 | 3 | Kit-1/2 Hb, STR, Qc | 16 | 142-7498 | 8 | M6X1 Metric Hex Stand-Off |
| 8 | 142-6188 | 1 | Kit-3/8 Hb, STR, Qc | 17 | 142-7499 | 4 | M6X1 Threaded Rod |
| 9 | 142-6347 | 1 | Adaptor-Male Qc Bolted Flanged | | | | |

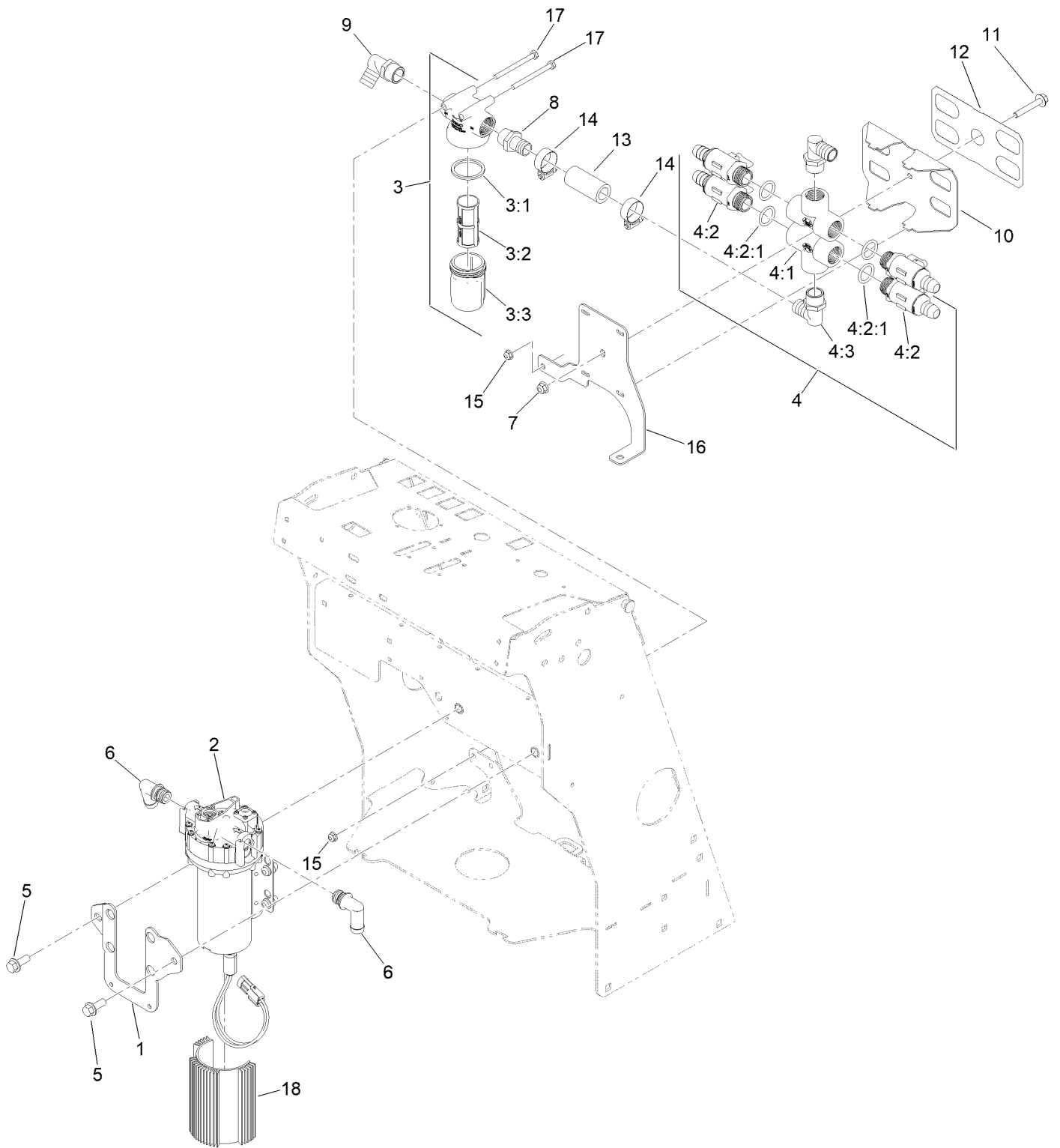
Boom Assembly



Boom Assembly (continued)

| <i>Ref.</i> | <i>Part Number</i> | <i>Qty.</i> | <i>Description</i> | <i>Ref.</i> | <i>Part Number</i> | <i>Qty.</i> | <i>Description</i> |
|-------------|--------------------|-------------|------------------------------------|-------------|--------------------|-------------|---------------------|
| 1 | 142-4709 | 1 | Boom-Center, Welded | 11 | 142-7327 | 2 | Screw-HH |
| 2 | 142-3990 | 2 | Boom-Pivot | 12 | 126-2661 | 4 | Screw-HH |
| 3 | 142-6682 | 2 | Hinge-Boom | 13 | 135-6110 | 9 | Nut-Hex Flange |
| 4 | 142-4710 | 1 | Boom-Wing, LH | 14 | 142-5490 | 4 | Screw-HWH |
| 5 | 142-4711 | 1 | Boom-Wing, RH | 15 | 142-6880 | 2 | Spring-Compression |
| 6 | 135-5788 | 2 | Body-Nozzle, Left | 16 | 135-7129 | 1 | Hose-Spray |
| 6:1 | 146-1020 | 1 | Cap-Sprayer Nozzle | 17 | 135-6298 | 1 | Hose-Spray |
| 6:2 | 146-1021 | 1 | Diaphragm-Sprayer Nozzle | 18 | 126-0968 | 1 | Fitting-Tee |
| 7 | 135-5790 | 2 | Body-Nozzle, Right | 19 | 2412-36 | 10 | Clamp-Hose |
| 7:1 | 146-1020 | 1 | Cap-Sprayer Nozzle | 20 | 135-6211 | 3 | Screw-HHF |
| 7:2 | 146-1021 | 1 | Diaphragm-Sprayer Nozzle | 21 | 142-4069 | 2 | Spacer-Boom, Pivot |
| 8 | 126-3943 | 4 | Strainer-Nozzle, 50M 5PSI Check | 22 | 142-7887 | 2 | Hose-Spray, Wrapped |
| 9 | 142-3308 | 4 | Tip-Spray, 025 | 23 | 142-7308 | 1 | Hose-Spray, Wrapped |
| 10 | 135-5781 | 4 | Cap-Nozzle | 24 | 3290-378 | 5 | Tie-Cable |
| 10:1 | 40998 | 1 | Seat-Gasket | 25 | 32180-030 | 1 | Clip-Tie |

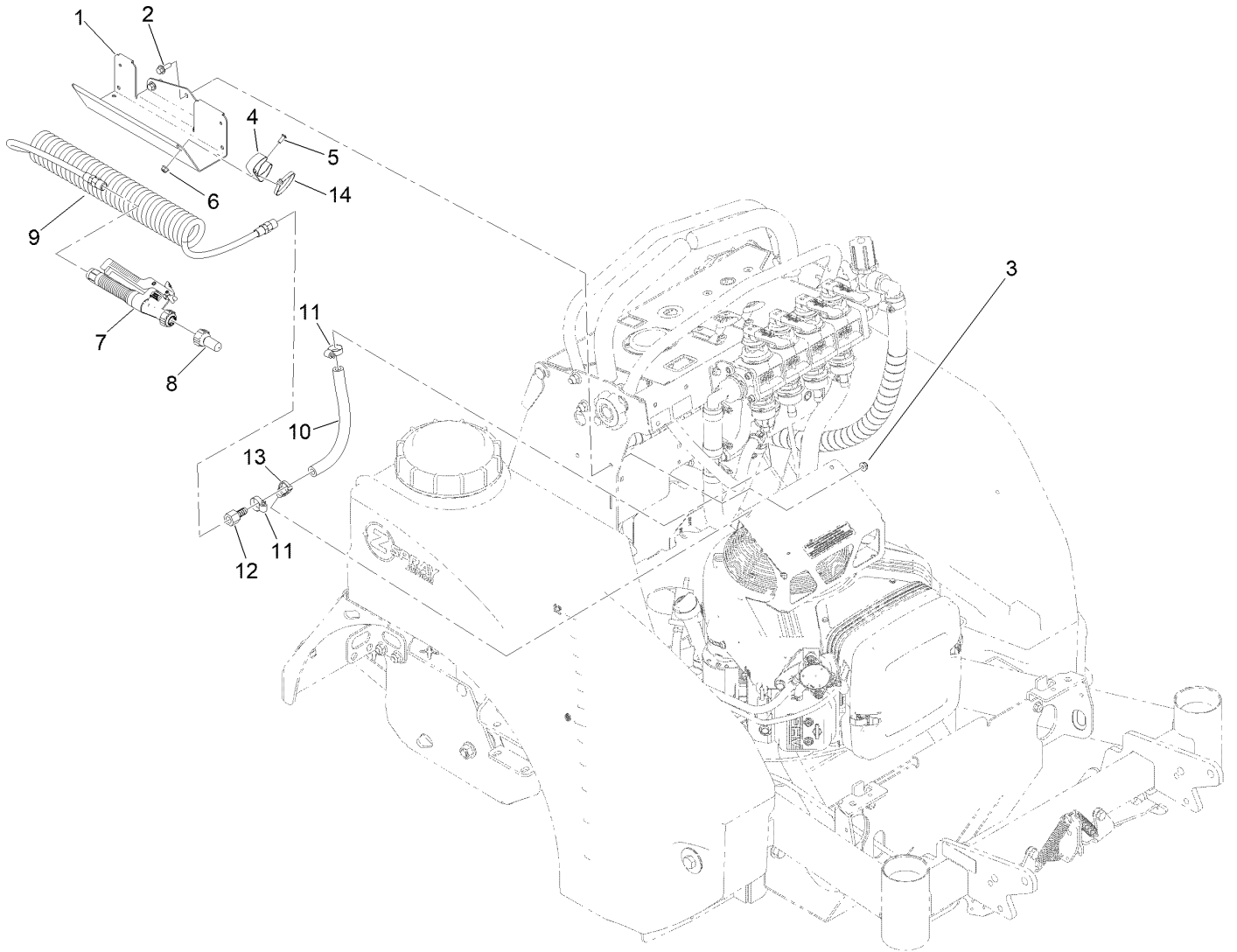
Pump Assembly



Pump Assembly (continued)

| <i>Ref.</i> | <i>Part Number</i> | <i>Qty.</i> | <i>Description</i> | <i>Ref.</i> | <i>Part Number</i> | <i>Qty.</i> | <i>Description</i> |
|-------------|--------------------|-------------|----------------------|-------------|--------------------|-------------|-----------------------------|
| 1 | 142-4274 | 1 | Bracket-Mount, Pump | 7 | 135-6109 | 1 | Nut-Hex Flange |
| 2 | 146-0148 | 1 | Pump-5.3 GPM | 8 | 41257 | 1 | Hosebarb |
| 3 | 142-6864 | 1 | Strainer-T, 50 Mesh | 9 | 135-5772 | 1 | Fitting-Elbow, 90 |
| 3:1 | 142-6867 | 1 | Gasket-Strainer | 10 | 142-6910 | 1 | Bracket-Valve, Selector |
| 3:2 | 142-6866 | 1 | Screen-50 Mesh | 11 | 126-2711 | 1 | Screw-HHF |
| 3:3 | 142-6865 | 1 | Bowl-Strainer, Black | 12 | 142-7247 | 1 | Decal-Valve |
| 4 | 142-6906 | 2 | ASM-Valve, Selector | 13 | 142-7066 | 1 | Hose-Spray |
| 4:1 | 146-0632 | 1 | Fitting-Tee | 14 | 2412-129 | 2 | Clamp-Hose |
| 4:2 | 142-9319 | 2 | Valve | 15 | 135-6108 | 2 | Nut-Hex Flange |
| 4:2:1 | 142-9320 | 1 | O-Ring, -213 | 16 | 142-7060 | 1 | Plate-Valve, Mount |
| 4:3 | 135-5772 | 1 | Fitting-Elbow, 90 | 17 | HDW20122 | 2 | HHCS, 1/4-20X3, ST/ST, 18-8 |
| 5 | 135-6208 | 2 | Screw-HHF | 18 | 142-3322 | 1 | Heatsink-3.0 In |
| 6 | 126-4420 | 2 | Fitting-Elbow | | | | |

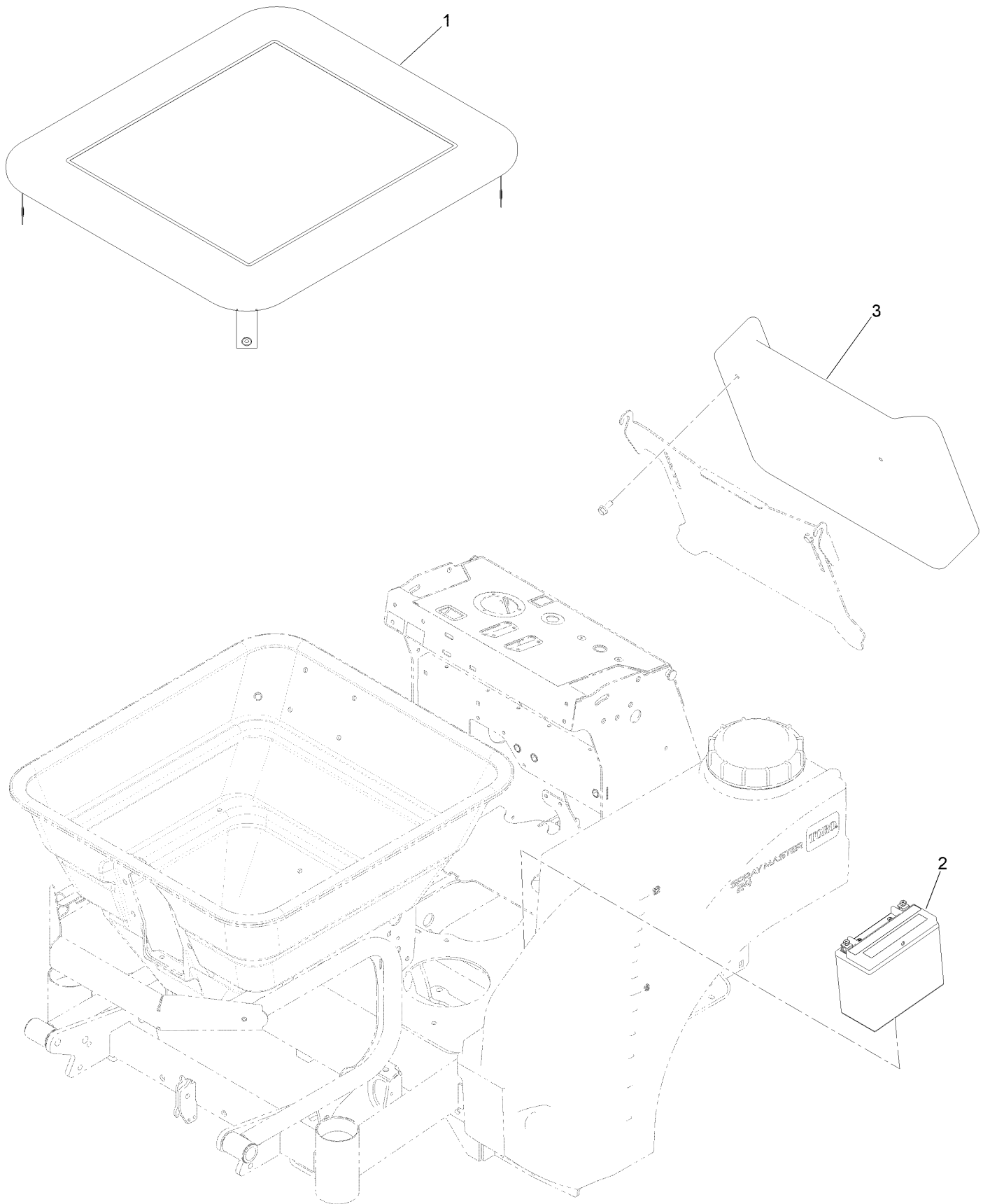
Spray Gun Assembly



Spray Gun Assembly (continued)

| <i>Ref.</i> | <i>Part Number</i> | <i>Qty.</i> | <i>Description</i> | <i>Ref.</i> | <i>Part Number</i> | <i>Qty.</i> | <i>Description</i> |
|-------------|--------------------|-------------|--------------------|-------------|--------------------|-------------|------------------------|
| 1 | 142-7609 | 1 | Tray-Hose | 8 | 135-5778 | 1 | Tip-Spray, No.12 Spot |
| 2 | 135-6221 | 2 | Screw-HHF | 9 | 135-6612 | 1 | Hose-Coiled, 15 Ft |
| 3 | 135-6108 | 2 | Nut-Hex Flange | 10 | 135-6162 | 1 | Hose-Spray |
| 4 | 135-5661 | 1 | Holder-Tool, Clip | 11 | 2412-36 | 2 | Clamp-Hose |
| 5 | 135-6374 | 1 | Screw-HSBH | 12 | 354-94 | 1 | Fitting-Female, Barbed |
| 6 | 135-6342 | 1 | Nut-Hex Flange | 13 | 32180-030 | 1 | Clip-Tie |
| 7 | 135-5773 | 1 | Gun-Spray, Spot | 14 | 3290-378 | 2 | Tie-Cable |

Hopper Cover, Knee Pad and Battery Assembly



Hopper Cover, Knee Pad and Battery Assembly (continued)

| <i>Ref.</i> | <i>Part Number</i> | <i>Qty.</i> | <i>Description</i> |
|-------------|--------------------|-------------|--------------------|
| 1 | 146-0140 | 1 | Cover-Hopper |
| 2 | 142-7345 | 1 | Battery-Agm |
| 3 | 135-7884 | 1 | Pad-Knee |

Notes:

Notes:



Count on it.