



# Reel Drive Hose Kit Reelmaster® 6000 Series

Part No. 105-0140

Part No. 105-0139

Form No. 3325-945 Rev A

## Installation Instructions

**Note:** Kit part no. 105-0139 contains components required for Reelmaster 6500 and 6700. Kit part no. 105-0140 contains components required for only the rear wing cutting units on Reelmaster 6700 only.



### Warning



Hydraulic fluid escaping under pressure can penetrate skin and cause injury.

- Safely relieve all pressure in the hydraulic system before performing any work on the hydraulic system.
- Make sure all hydraulic fluid hoses and lines are in good condition and all hydraulic connections and fittings are tight before applying pressure to the hydraulic system.
- Keep your body and hands away from pin hole leaks or nozzles that eject high pressure hydraulic fluid.
- Use cardboard or paper to find hydraulic leaks.
- Get immediate medical help if fluid is injected into skin.

1. Remove and discard all hose guide components securing hoses to lift arms (Fig. 1).

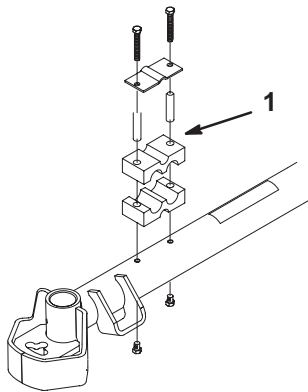


Figure 1

1. Old hose guide components

2. Locate and remove hoses to be replaced. Refer to Figures 5 and 6.

**Note:** When removing old hoses, remember how they were routed through components in machine.

3. Using mounting holes from old hose guides, mount a new hose guide to each lift arm with (2) screws and washers (Fig. 2).

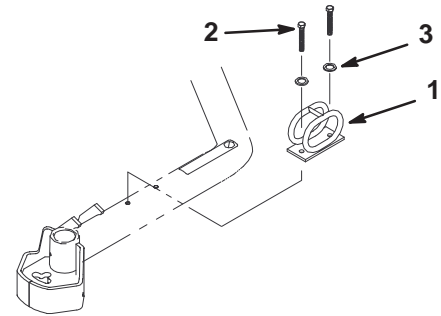


Figure 2

1. Hose guide
2. Screw
3. Washer

4. Insert each set of new hoses (3) into a protective sleeve. Part number of each new hose is shown in Figures 5 and 6.
5. Using the dimensions shown in Figure 3, position and secure each end of protective sleeve to hoses with a cable tie.

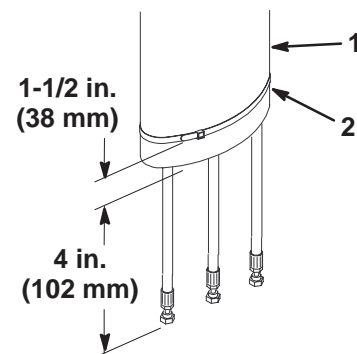


Figure 3

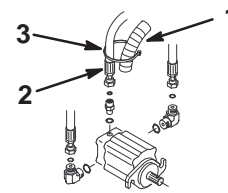
1. Protective cover
2. Cable tie

6. Route each set of hoses and protective sleeve through appropriate hose guide and secure to reel motor and traction unit.

**Note:** Make sure that the o-rings are properly positioned and hoses are not twisted or kinked when making connections.

**Note:** Refer to Toro Hose Servicing Manual, Form No. 94-813SL for proper routing practices and installation techniques.

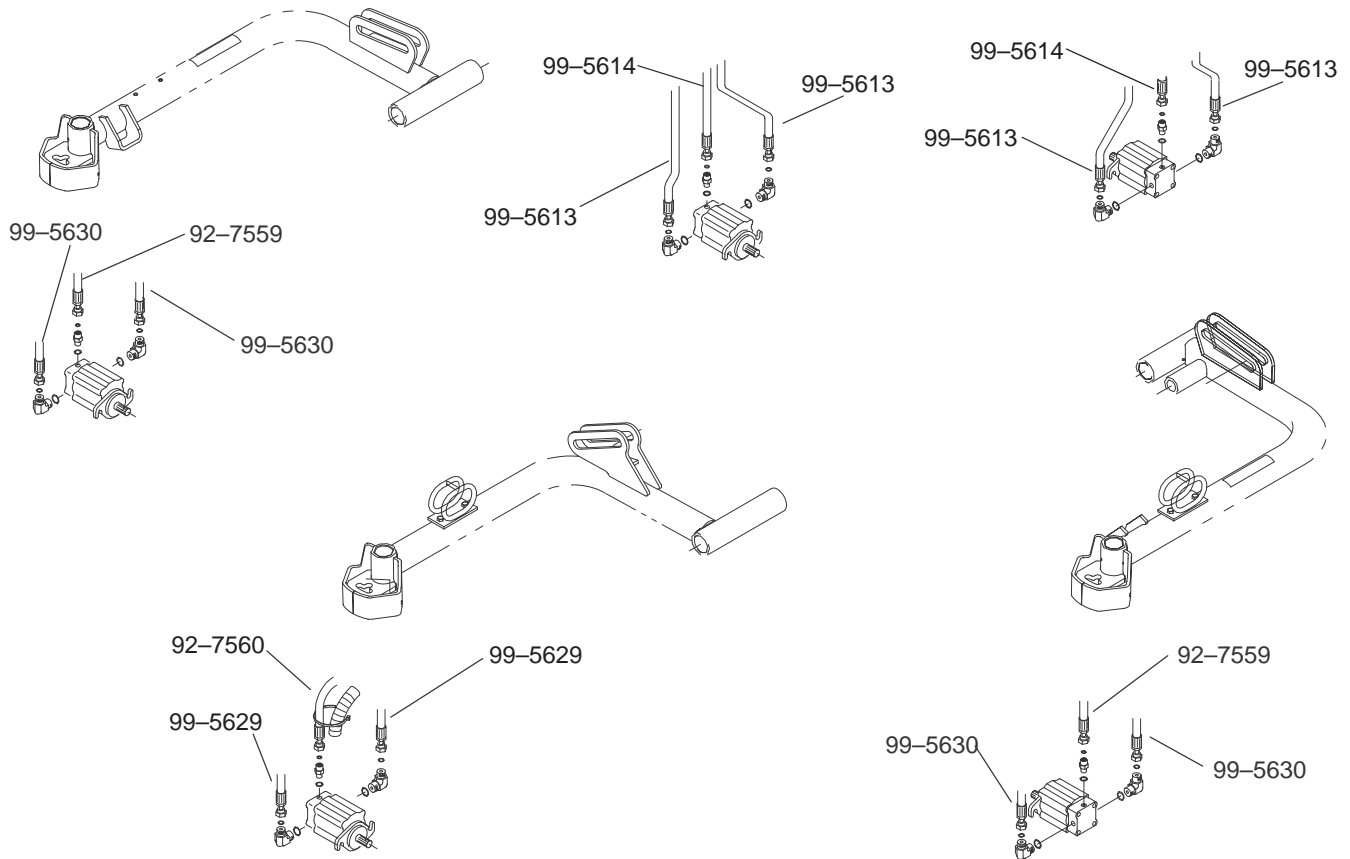
7. On reel motors equipped with speed sensors, secure sensor tubing to hydraulic hose with a cable tie (Fig. 4).



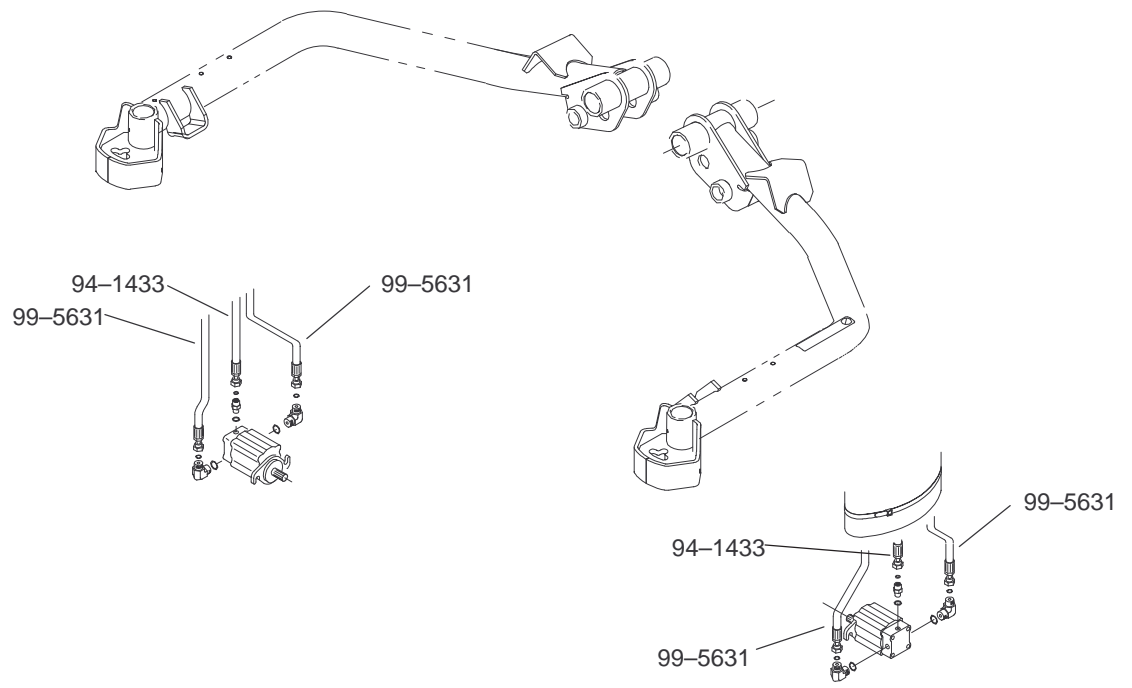
**Figure 4**

- 1. Sensor tubing
- 2. Hydraulic hose
- 3. Cable tie

8. On Reelmaster 6700 wing lift arms, No. 6 & 7 cutting units, only, secure hoses and protective covers to each hose guide with a cable tie.



**Figure 5**



**Figure 6**

