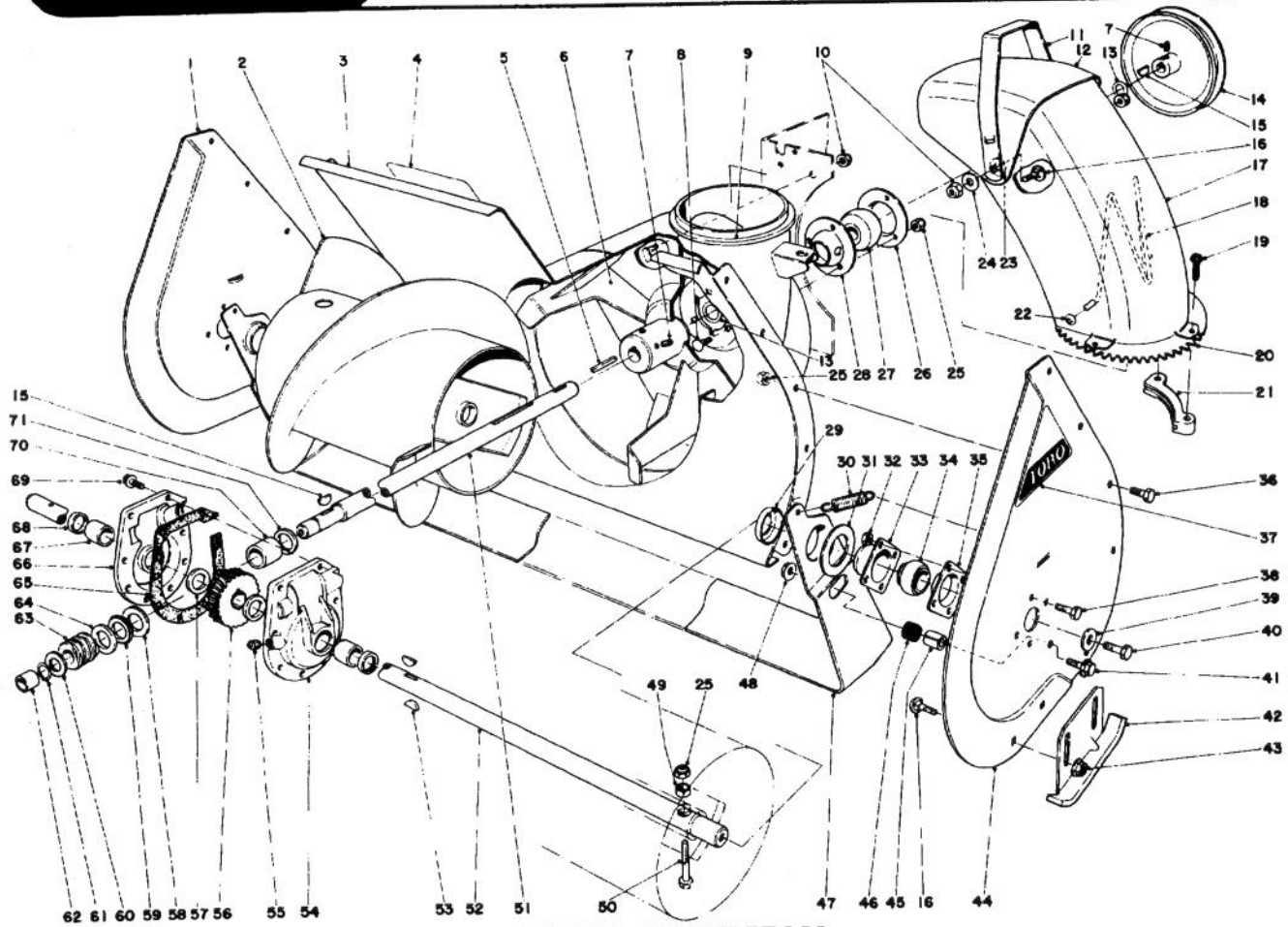


TORO[®]MODEL NO. 38040-9000001 & UP
MODEL NO. 38050-9000001 & UP**PARTS
CATALOG****524 AND 724 SNOWTHROWERS****AUGER ASSEMBLY**

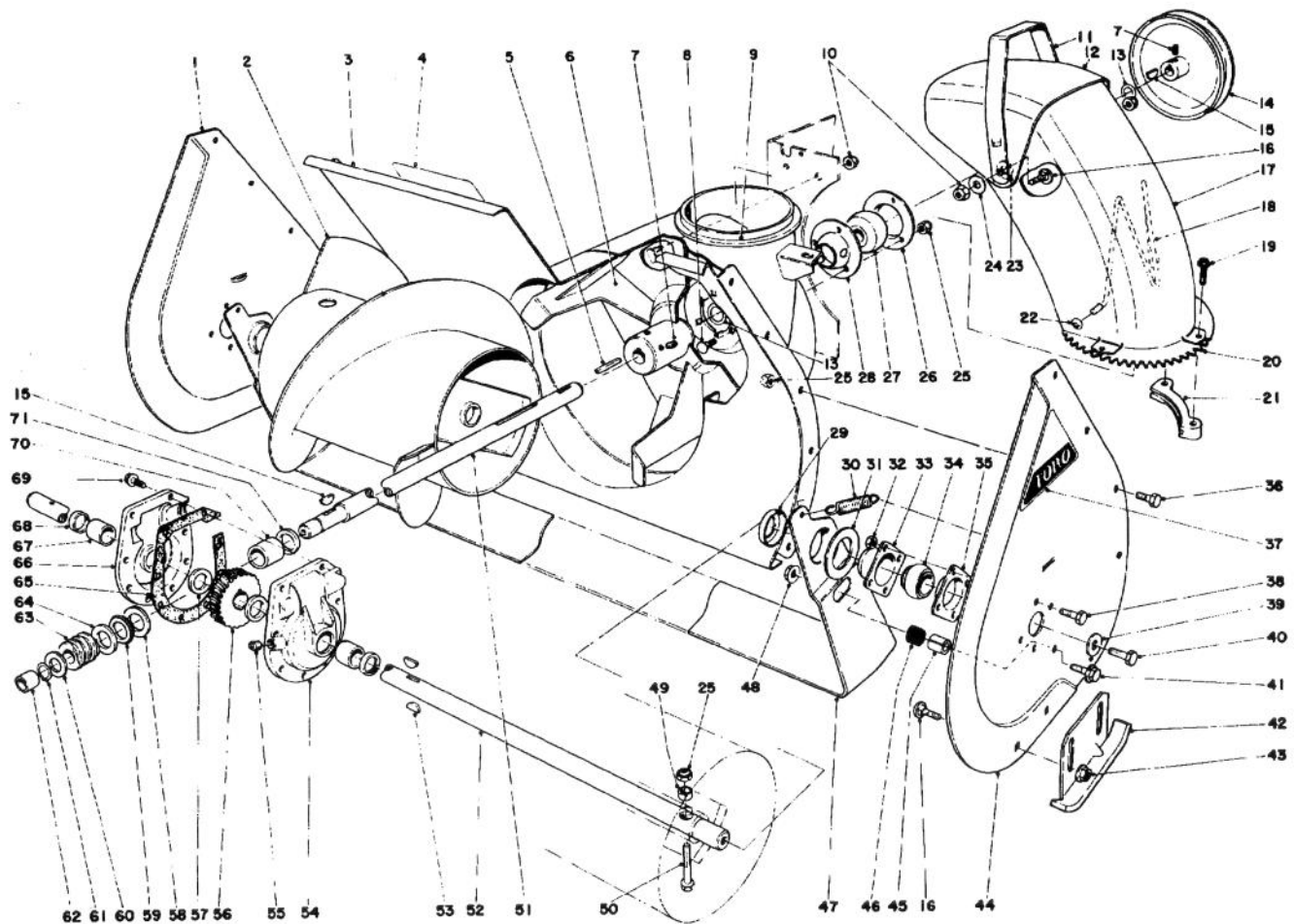
Ref. No.	Part No.	Description	No. Used
1	20-1360	Sideplate Auger Right	1
2	26-6140	Auger Right	1
*	26-6150	Auger Left	1
3	26-6090	Auger Housing	1
4	29-6350	Decal Auger Warning	1
5	6-8590	Key-Impeller	1
6	20-1260	Impeller	1
7	3242-4	Set Screw	4
8	3230-1	Carriage Bolt	3
9	17-5180	Ring Chute	1
10	32152-2	Locknut	6
11	20-1410	Handle Deflector	1
12	20-1400	Deflector Chute	1
13	3-0737	Thrust Washer	2

*Not Illustrated

Ref. No.	Part No.	Description	No. Used
14	20-1310	Pulley Impeller	1
15	3257-23	Woodruff Key	2
16	3231-27	Carriage Bolt	6
17	20-1390	Chute	1
18	12-2040	Wire Chute	1
19	27-0210	Special Screw	4
20	20-1370	Swivel Gear Chute	1
21	25-6140	Retainer Chute	2
22	3290-326	Pushnuts	2
23	20-4320	Washer Rubber	2
24	3290-340	Washer Belleville	2
25	3296-29	Locknut	15
26	26-6120	Bearing Flange Rear	1
27	26-6100	Bearing Impeller	1

COPYRIGHT © ALL RIGHTS RESERVED
The Toro Company - 1978

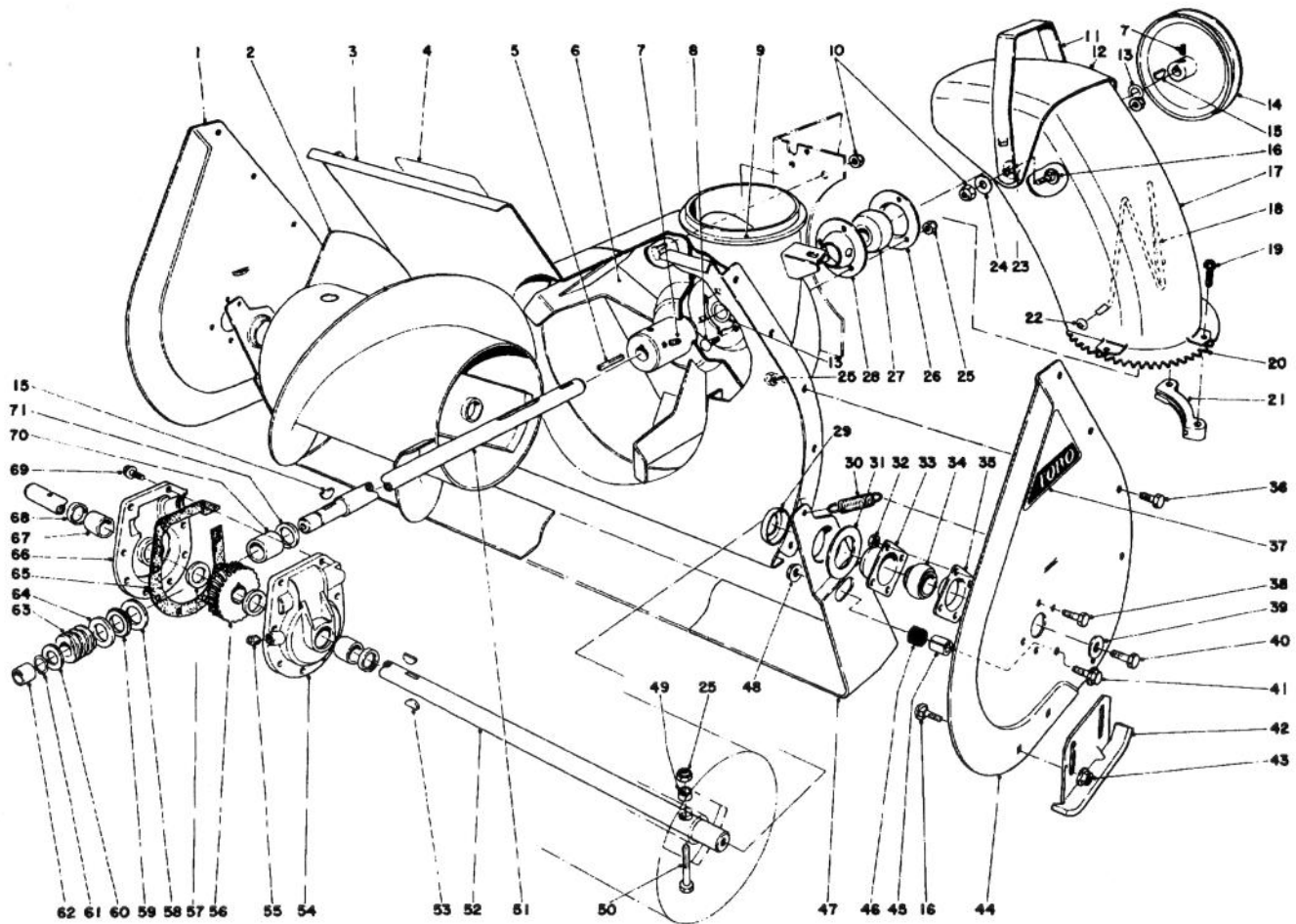
Jo



AUGER ASSEMBLY (Continued)

Ref. No.	Part No.	Description	No. Used
28	26-6110	Bearing Flange Front	1
29	26-6400	Positioner - Scraper Blade	2
30	5-7290	Spring - Scraper Blade	2
31	20-0300	Spacer - Scraper Blade	2
32	32152-4	Locknut	8
33	20-0990	Bearing Flange Auger	2
34	20-0980	Bearing Auger	2
35	20-1000	Bearing Flange Auger	2
36	322-2	Capscrew	10
37	17-6500	Decal Auger Side Plate	2
38	321-3	Capscrew	8
39	3-0750	Flat Washer	2
40	323-6	Capscrew	2
41	3234-11	Hex Flange Bolt	2
42	20-2840	Skid	2
43	3290-357	Flange Nut	4
44	20-1340	Sideplate Auger Left	1
45	25-5140	Standoff - Scraper Blade	2
46	25-5150	Bumper - Scraper Blade	2
47	20-1320	Scraper Blade	1
48	32128-21	Locknut	2

Ref. No.	Part No.	Description	No. Used
49	25-5090	Spacer Auger Hub	2
50	17-7030	Bolt Auger	2
51	36-2580	Shaft Impeller	1
52	20-1170	Shaft Auger	1
53	3257-33	Key Woodruff	2
54	37-8860	Gear Case (Incl. Ref. #67 & 68)	1
55	281-1	Pipe Plug	1
56	5-7180	Gear Worm	1
57	252-71	Thrust Bearing	2
58	252-78	Thrust Washer	1
59	252-76	Thrust Bearing	1
60	3-8664	Thrust Washer	1
61	32120-72	Retaining Ring	1
62	256-32	Bushing	1
63	5-7170	Worm	1
64	252-77	Thrust Washer	1
65	19-8520	Gasket	1
66	37-8850	Gear Case (Incl. Ref. #67 & 68)	1
67	256-237	Bushing	2
68	7-0045	Oil Seal	2
69	32144-11	Thread Form Screw	8

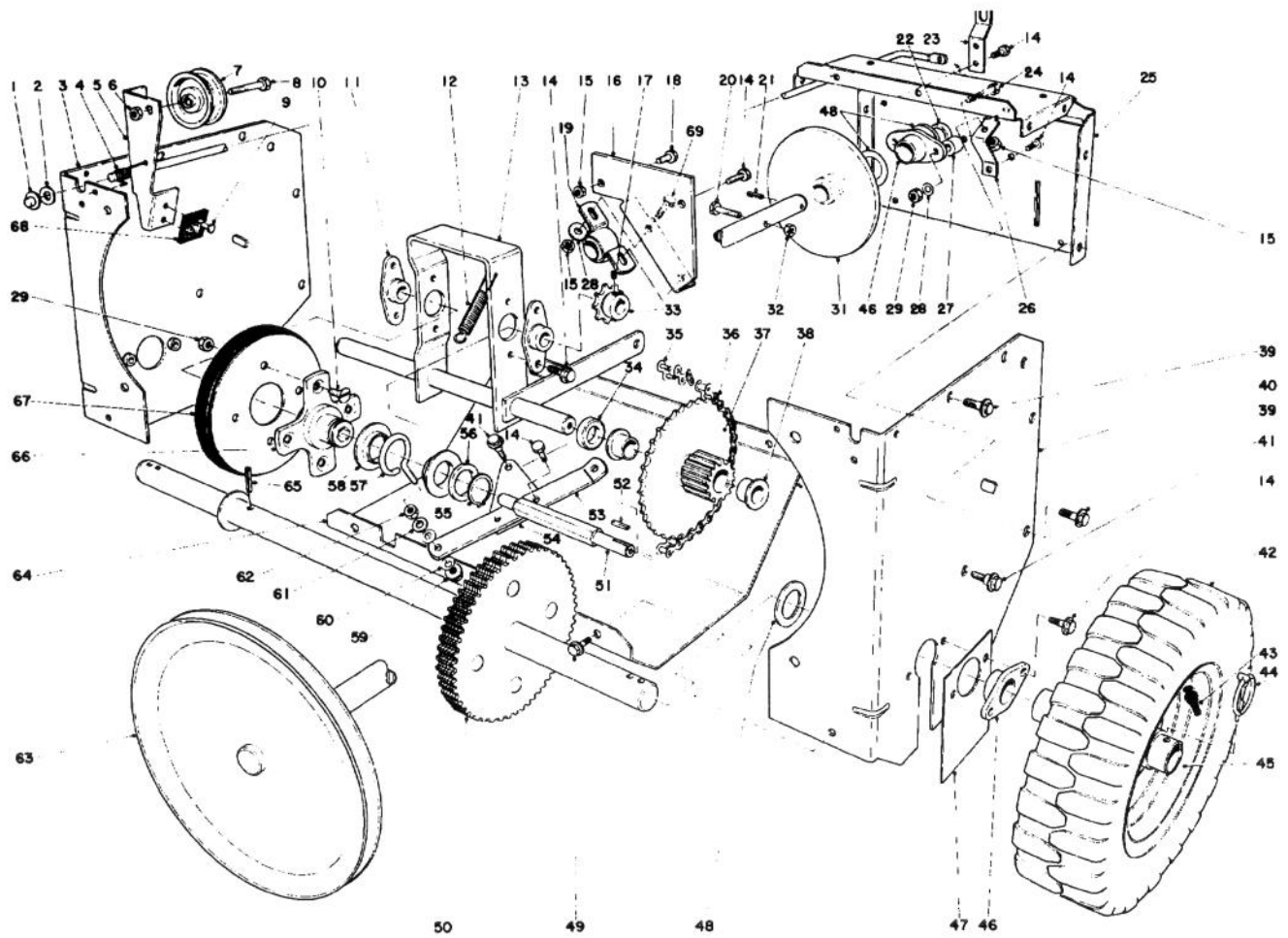


AUGER ASSEMBLY (Continued)

Ref. No.	Part No.	Description	No. Used
70	20-3210	Bushing	1
71	237-87	Seal	1
*	19-7000	Gear Case Assembly Complete	1

Ref. No.	Part No.	Description	No. Used
*	20-0690	Drift Breaker Kit (Optional)	1
*	25-9150	Decal Replacement Serial Plate	1

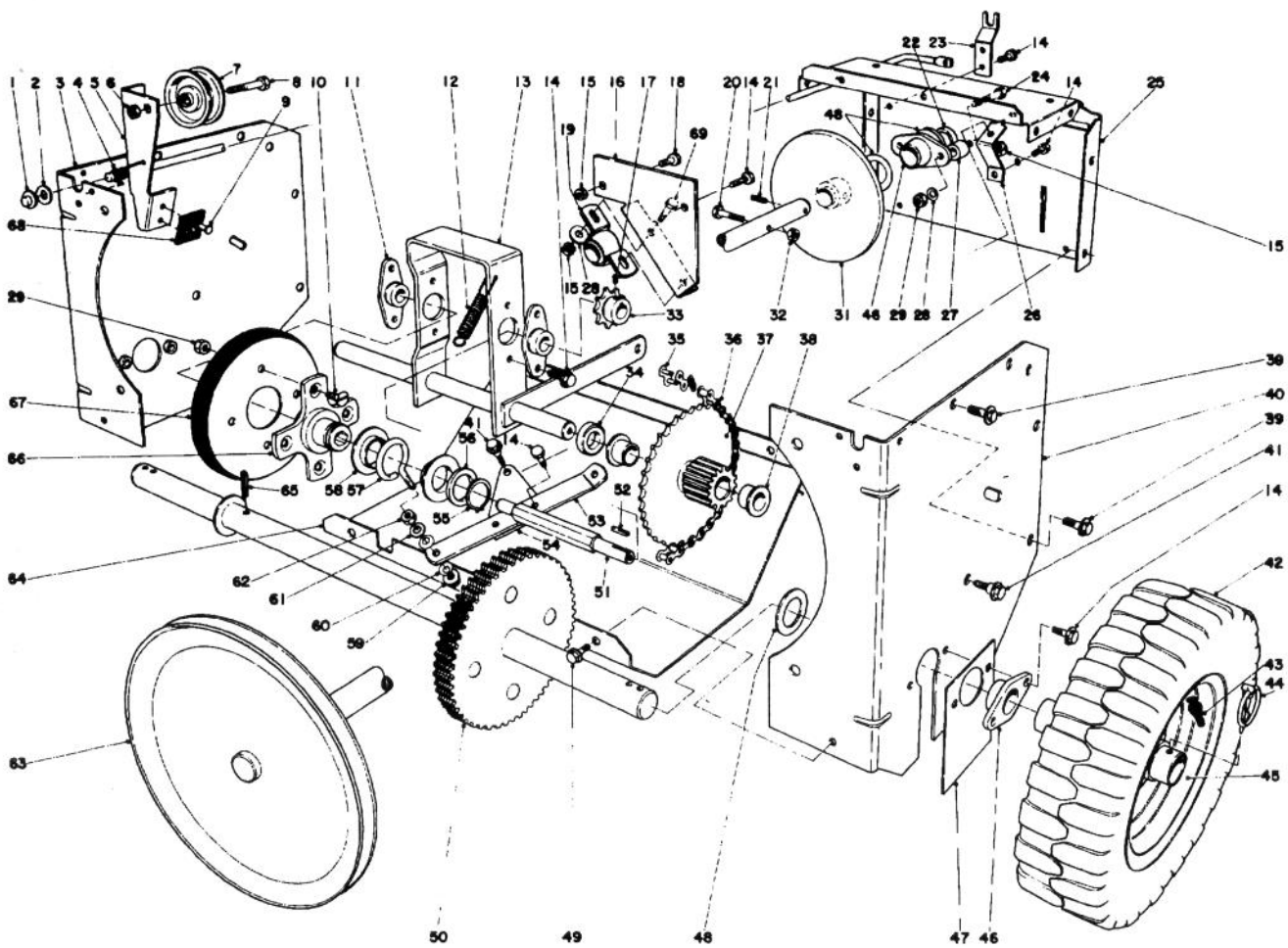
*Not Illustrated



TRACTION ASSEMBLY

Ref. No.	Part No.	Description	No. Used
1	3290-383	Pushnut	1
2	3256-25	Flat Washer	1
3	20-1420	Side Plate Traction	1
4	20-1160	Torsion Spring Clutch	1
5	25-5950	Clutch Rod (Incl. Ref. #9 & 68)	1
6	32146-2	Locknut	1
7	3-4244	Idler Pulley	1
8	323-29	Capscrew	1
9	3295-23	Rivet	2
10	32108-94	Screw Flat Head	4
11	20-1620	Bearing Friction Wheel	2
12	11-4640	Spring-Clutch Control	1
13	20-1580	Pivot Shaft	1
14	32144-11	Screw Thread Forming	13
15	3296-29	Locknut	5
16	36-9990	Bracket - Shaft Support	1
17	3245-32	Set Screw	2
18	322-2	Capscrew	2
19	36-9980	Bearing - Pillow Block	1
20	321-33	Capscrew	1
21	32121-6	Roll Pin	1
22	26-6370	Spacer Drive Shaft	1

Ref. No.	Part No.	Description	No. Used
23	20-1080	Support Clutch Rod	1
24	322-8	Capscrew	2
25	26-6360	Frame Center	1
26	20-1760	Pivot Bracket	1
27	26-6380	Standoff Drive Shaft	2
28	3256-23	Washer	4
29	32146-5	Locknut	6
31	20-1550	Friction Plate	1
32	32152-4	Locknut	1
33	5-9820	Sprocket	1
34	3-7384	Spacer	1
35	2710-6	Connecting Link	1
36	20-1810	Chain	1
37	20-1640	Gear & Bushing (Incl. Ref. #38)	1
38	3-1506	Bushing-Flanged	2
39	32144-15	Hex Hd. Thread Forming Screw	8
40	20-1430	Side Plate Traction	1
41	11-8140	Shoulder Screw	3
42	231-80	Tire	2
43	232-27	Valve Stem	2
44	3290-243	Klik Pin	2



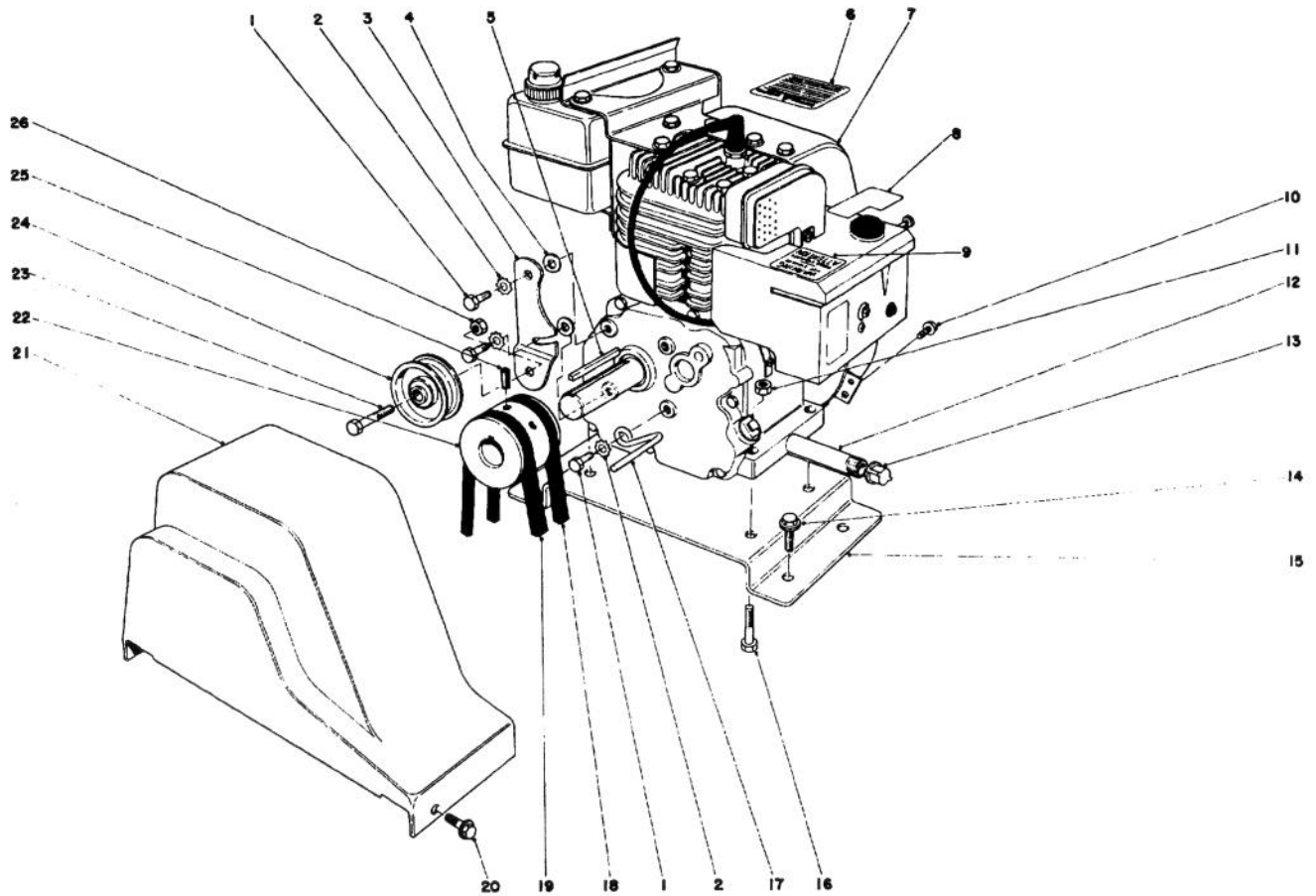
TRACTION ASSEMBLY (Continued)

Ref. No.	Part No.	Description	No. Used
45	20-1750	Wheel	2
46	20-1730	Bearing Axle	3
47	20-1720	Cover	1
48	3-0737	Thrust Washer	5
49	32144-10	Screw Thread Forming	4
50	20-1680	Axle & Gear	1
51	20-1630	Shaft Friction Wheel	1
52	3-6168	Square Key	1
53	20-1780	Linkage Shift	1
54	20-1770	Pivot Plate	1
55	32151-36	Snap Ring	1
56	252-71	Thrust Bearing	1
57	11-8050	Slider Ring Collar	1
58	11-8080	Ring - Slider	2
59	32128-12	Flange Nut	1

Ref. No.	Part No.	Description	No. Used
60	3290-212	Spring Washer	2
61	3256-45	Flat Washer	2
62	32146-6	Nut	1
63	22-7930	Drive Shaft	1
64	20-1840	Lower Shield	1
65	32121-9	Roll Pin	1
66	20-3310	Hub Traction Disc	1
67	3-5461	Disc Assembly	1
68	20-3100	Brake Pad	1
69	322-3	Capscrew	2
†	20-9800	Tire Chain Kit	1
*	6-9539	Loose Parts Kit (Model 38040)	1
*	6-9569	Loose Parts Kit (Model 38050)	1
*†	232-36	Tube (optional)	2

†Optional Equipment

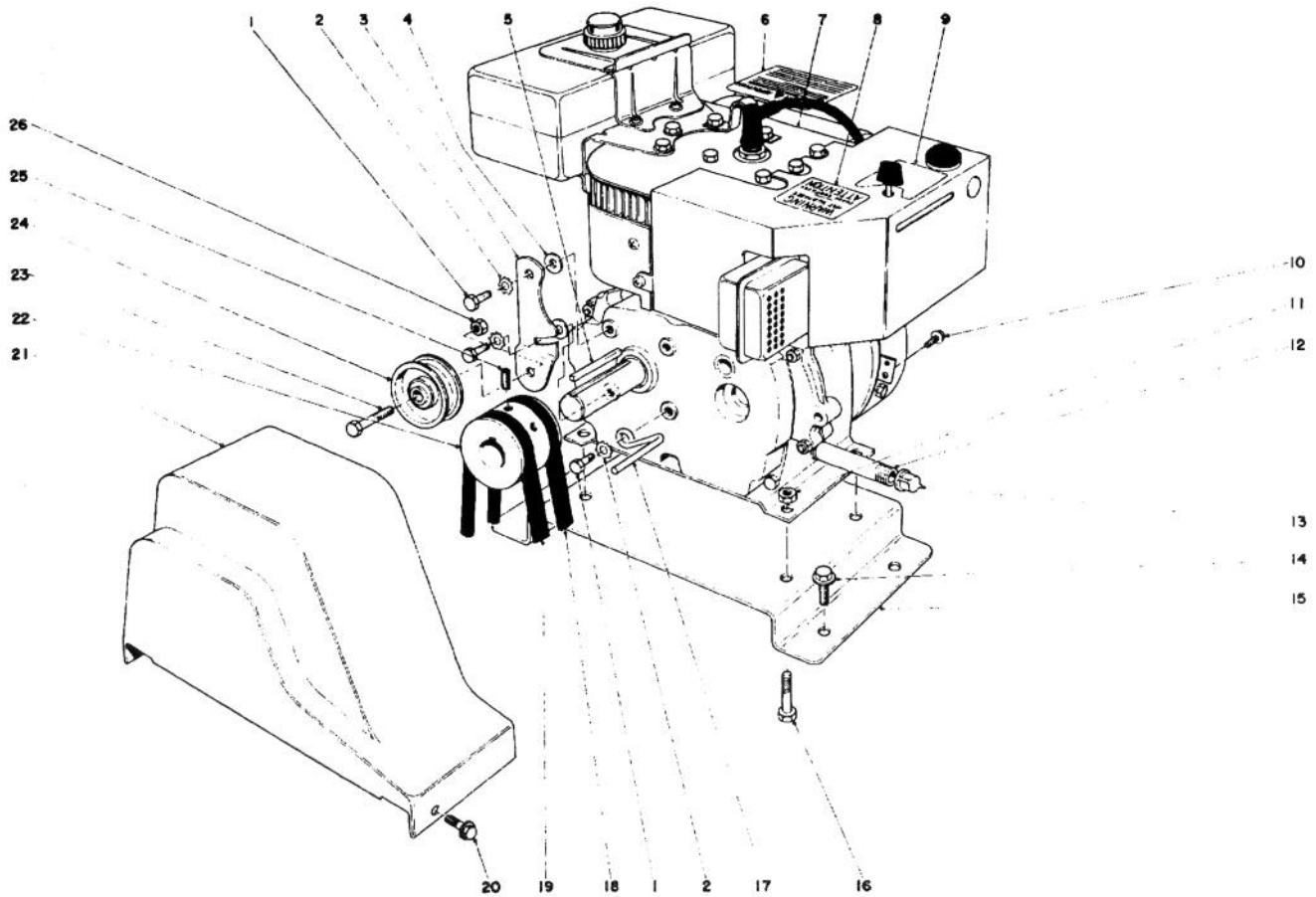
*Not Illustrated



ENGINE ASSEMBLY (Model No. 38040)

Ref. No.	Part No.	Description	No. Used
1	3210-2	Capscrew	3
2	3255-8	Lockwasher	3
3	20-1800	Idler Arm	1
4	3256-23	Washer	2
5	5-0930	Key	1
6	29-6380	Decal - Hazards Caution	1
7	221-570	Engine	1
8	29-6410	Decal - Choke & Primer	1
9	29-6390	Decal - Hot Surface Warning	1
10	12-3270	Screw Thread Forming	1
11	3296-29	Locknut	4
12	289-34	Pipe Nipple	1
13	288-2	Pipe Cap	1

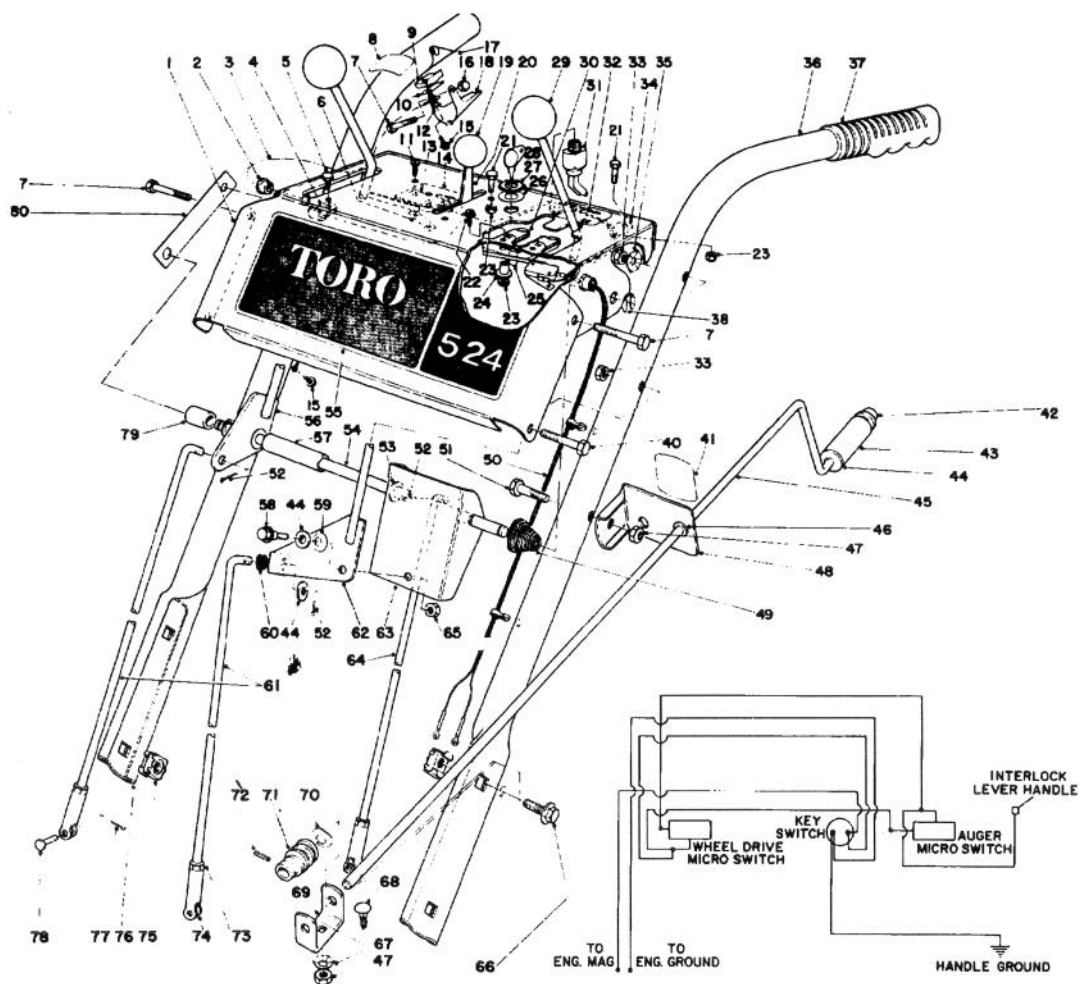
Ref. No.	Part No.	Description	No. Used
14	32144-15	Hex Form Screw	4
15	25-5990	Plate Engine Mounting	1
16	322-7	Capscrew	4
17	17-5530	Belt Retainer	1
18	20-1820	V-Belt Traction	1
19	26-9670	V-Belt Auger	1
20	32144-10	Screw Thread Forming	2
21	20-1830	Belt Guard	1
22	21-4100	Pulley	1
23	323-29	Capscrew	1
24	3-4244	Idler Pulley	1
25	3246-14	Set Screw	2
26	32146-2	Locknut	1



ENGINE ASSEMBLY (Model No. 38050)

Ref. No.	Part No.	Description	No. Used
1	3210-2	Capscrew	3
2	3255-8	Lockwasher	3
3	20-1800	Idler Arm	1
4	3256-23	Washer	1
5	5-0930	Key	1
6	29-6380	Decal - Hazards Caution	1
7	221-571	Engine	1
8	29-6390	Decal - Hot Surface Warning	1
9	29-6420	Decal - Choke & Primer	1
10	12-3270	Screw Thread Forming	1
11	3296-29	Locknut	4
12	289-34	Pipe Nipple	1
13	288-2	Pipe Cap	1

Ref. No.	Part No.	Description	No. Used
14	32144-15	Hex Form Screw	4
15	25-5990	Plate Engine Mounting	1
16	322-2	Capscrew	4
17	17-5530	Belt Retainer	1
18	20-1820	V-Belt Traction	1
19	26-9670	V-Belt Auger	1
20	32144-10	Screw Thread Forming	2
21	20-1830	Belt Guard	1
22	21-4100	Pulley	1
23	323-29	Capscrew	1
24	3-4244	Idler Pulley	1
25	3246-14	Set Screw	2
26	32146-2	Locknut	1

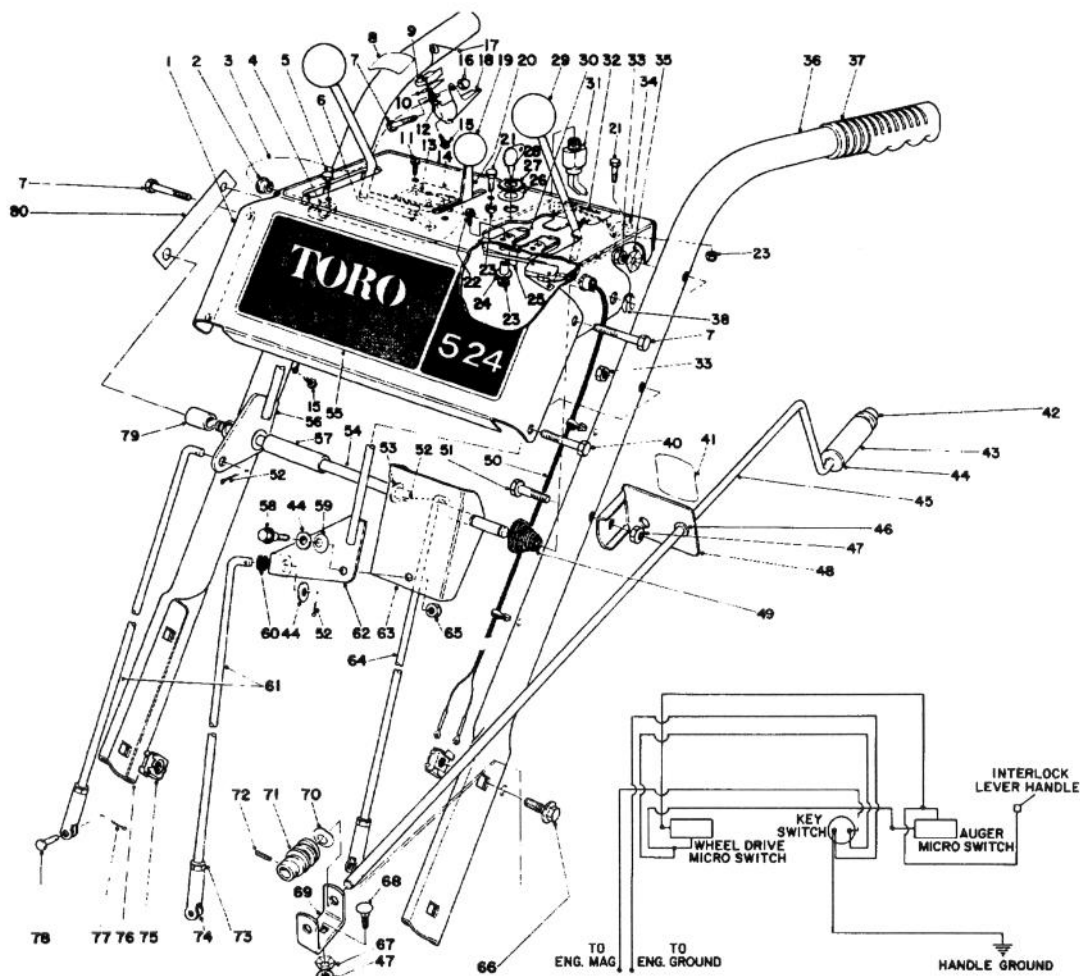


HANDLE ASSEMBLY

Ref. No.	Part No.	Description	No. Used
1	23-2350	Escutcheon Plate	1
2	2410-33	Snap Bushing	1
3	25-5970	Wire Assembly	1
4	20-2810	Mounting Clip	1
5	33-2270	Self Tapping Screw	1
6	3290-354	Clip	2
7	321-11	Capscrew	4
8	29-6360	Decal - Safety Interlock	1
9	17-5680	Insulator - Interlock	1
10	17-5690	Interlock Contact	1
11	3290-313	Pan Head Machine Screw	4
12	17-5700	Washer Insulator	1
13	12-3320	Switch Micro	2
14	22-7950	Switch Mounting Pad	1
15	33-2270	Screw Self Tapping	2
16	32111-7	Nut Acorn	1
17	17-5720	Spring Interlock	1
18	27-0450	Lever Interlock	1
19	233-36	Knob	1
20	25-7850	Throttle Control (Model 38040)	1
*	17-5520	Throttle Control (Model 38050)	1
21	32140-99	Hex Sems Screw	4

Ref. No.	Part No.	Description	No. Used
22	3251-4	Machine Screw	2
23	32146-18	Locknut	6
24	22-9740	Spacer Interlock	2
25	22-9730	Spring Interlock	1
26	3254-5	Lockwasher	1
27	218-461	Hex Nut	1
28	33-2010	Key	2
29	233-21	Knob	2
30	22-9750	Slide Interlock	1
31	29-5560	On - Off Switch	1
32	29-6340	Decal Instruction	1
33	32152-4	Locknut	4
34	2412-51	Clamp	2
35	3290-257	Washer - Pyramidal	2
36	25-6040	Handle Lift	1
37	6-0450	Handle Grip	2
38	32151-43	Klip Ring	2
40	321-9	Capscrew	1
41	29-6370	Decal - Chute Direction	1
42	3290-320	Push-On Speed Nut	1
43	20-2060	Chute Control Grip	1
44	3256-24	Washer	3

*Not Illustrated



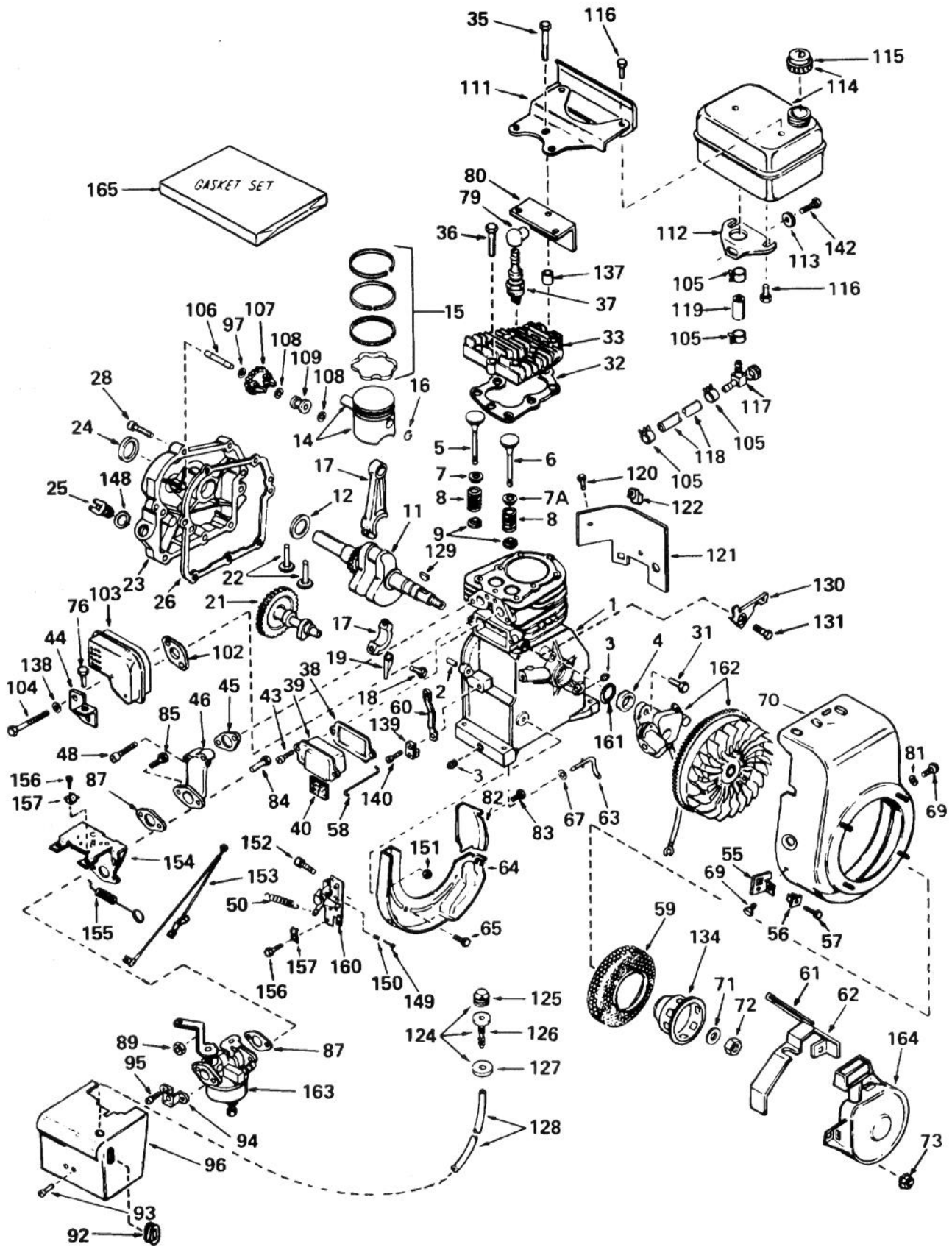
HANDLE ASSEMBLY (Continued)

Ref. No.	Part No.	Description	No. Used
45	17-5750	Rod - Chute Control	1
46	256-249	Nyliner	1
47	3296-29	Locknut	2
48	6-3069	Chute Control Rod Mounting (Incl. Ref. #41 & 46)	1
49	17-5630	Spring Conical	1
50	25-5980	Wire Harness Interlock	1
51	322-7	Capscrew	1
52	3272-6	Cotter Pin	3
53	3256-25	Washer	2
54	20-1910	Pivot Rod	1
55	22-9720	Decal Escutcheon (Model 38040)	1
*	22-9760	Decal Escutcheon (Model 38050)	1
56	20-1920	Lever	1
57	28-5660	Spacer Shift Lever	1
58	11-8140	Shoulder Screw	1
59	3290-213	Spring Washer	1
60	237-89	Rubber Grommet	1

Ref. No.	Part No.	Description	No. Used
61	20-1980	Control Rod - Speed Select	2
62	20-2020	Shift Lever	1
63	20-2010	Bracket Shift	1
64	20-1970	Control Rod - Traction	1
65	32152-1	Locknut	1
66	3234-1	Hex Flange Screw	4
67	3290-238	Washer Pyramidal	1
68	3230-1	Carriage Bolt	1
69	11-7110	Worm Bracket	1
70	3290-212	Spring Washer	1
71	8-8600	Worm Chute	1
72	32121-50	Roll Pin	1
73	3220-3	Jam Nut	3
74	5-0865	Clevis	3
75	3290-398	Retainer Nut	4
76	25-6030	Handle Right	1
77	3272-5	Cotter Pin	3
78	283-1	Clevis Pin	3
79	28-5670	Spacer Auger Lever	1
80	25-9760	Strap Escutcheon Support	1

*Not Illustrated

ENGINE, TECUMSEH MODEL NO. HS50-67074B (5 H.P. SNOWTHROWER MODEL NO. 38040)



ENGINE, TECUMSEH MODEL NO. HS50-67074B (5 H.P. SNOWTHROWER MODEL NO. 38040)

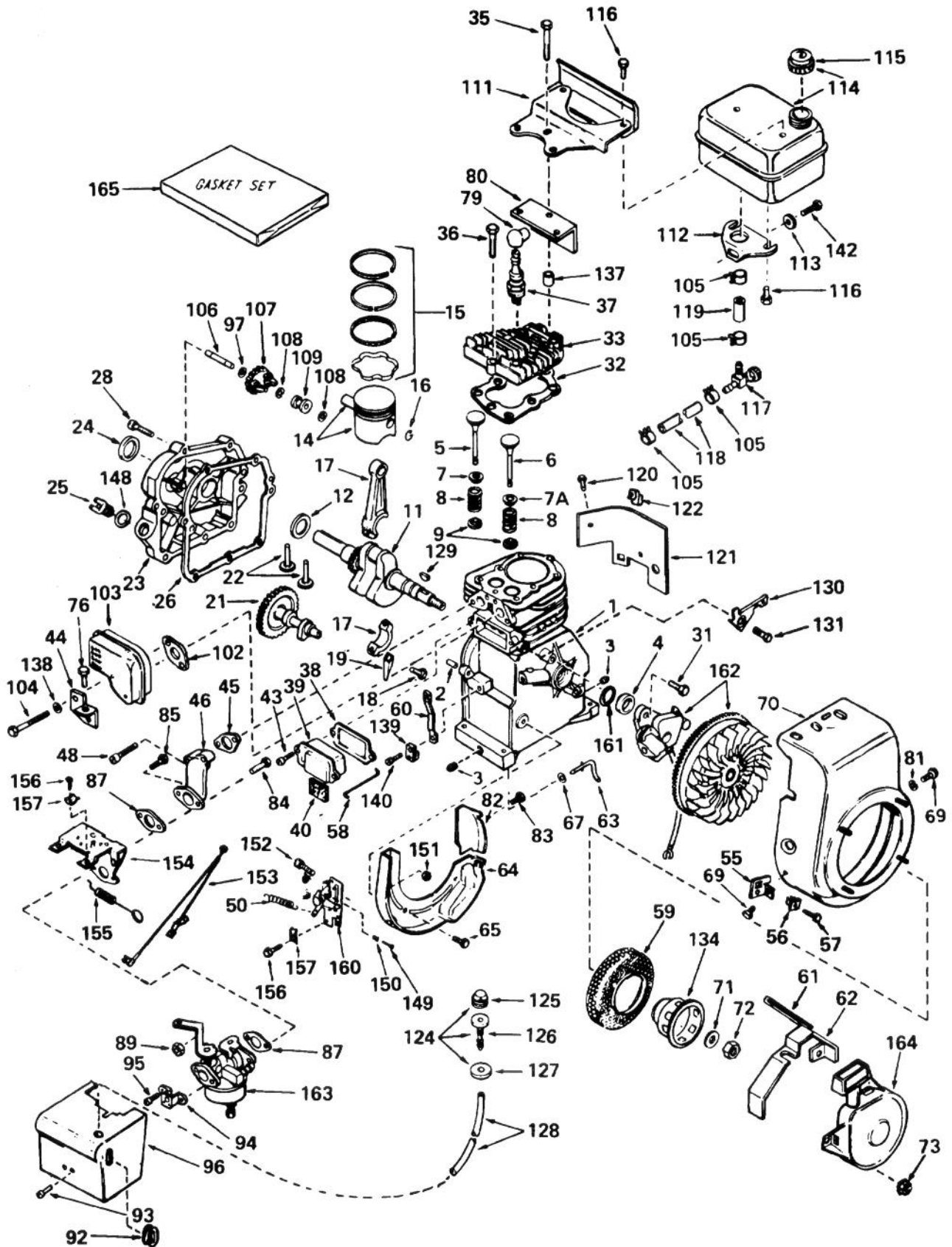
Ref. No.	Part No.	Description	No. Used
1	33674	Cylinder Assy. (Incl. Nos. 2, 3 & 4)	1
2	26727	Pin, Dowel	2
3	27642	Plug, Sq. Hd. (Oil Drain)	2
4	32600	Seal, Oil	1
5	32644	Valve, Intake (Std.) (Incl. Nos. 7, 8 & 9)	1
5	32645	Valve, Intake (1/32" oversize) (Incl. Nos. 7, 8 & 9)	1
6	29313B	Valve, Exhaust (Std.) (Incl. Nos. 7A, 8 & 9)	1
6	29315B	Valve, Exhaust (1/32" oversize) (Incl. Nos. 7A, 8 & 9)	1
7	31671	Cap, Upper Valve Spring (Intake)	1
7A	33678	Cap, Upper Valve Spring (Exhaust)	1
8	31672	Spring, Valve	2
9	31673	Cap, Lower Valve Spring	2
11	33675	Crankshaft Assy.	1
12	32323	Washer, Thrust	1
14	33562	Piston & Pin Assy. (Incl. 2 of No. 16) (Std.)	1
14	33563	Piston & Pin Assy. (Incl. 2 of No. 16) (.010 oversize)	1
14	33564	Piston & Pin Assy. (Incl. 2 of No. 16) (.020 oversize)	1
15	33567	Ring Set, Piston (Std.)	1
15	33568	Ring Set, Piston (.010 oversize)	1
15	33569	Ring Set, Piston (.020 oversize)	1
16	20381	Ring, Piston Pin Retaining	2
17	33661	Rod Assy., Connecting (Incl. Nos. 18 & 19)	1
18	32610A	Screw, Connecting Rod	2
19	32654	Dipper, Oil	1
21	33158	Camshaft (Compression Release)	1
22	27241	Lifter, Valve	2
23	32700A	Cover, Cylinder (Incl. Nos. 24, 25, 106 & 148)	1
24	27897	Seal, Oil	1
25	27625	Plug, Oil Filler (Incl. No. 148)	1
26	*27677	Gasket, Cylinder Cover	1
28	30564	Screw, Hex Hd. Cap Sems	7
31	650489	Screw, Hex Hd. Sems	2
32	*33554	Gasket, Cylinder Head	1
33	33016	Head, Cylinder	1
35	650694A	Screw, Hex Washer Hd.	5
36	6021A	Screw, Hex Washer Hd.	3
37	33636	Plug, Spark (Champion J-8 or equivalent) Except for Canada	1
37	34251 Canada	Resistor Spark Plug (Canadian Regulations require RJ-17LM Resistor Spark Plug)	1

Ref. No.	Part No.	Description	No. Used
38	*31619	Gasket, Valve Spring Cover	1
39	31337	Breather Assy. (Incl. Nos. 38 & 40)	1
40	31410	Element, Breather	1
43	650128	Screw, Fil. Slotted Hd. Sems	2
44	33333	Bracket, Carburetor Cover	1
45	*33673	Gasket, Intake	1
46	33691	Pipe, Intake	1
48	650664	Screw, Phil. Fil. Hd. Mach. Sems	2
50	31426	Spring, Extension	1
55	34126	Bracket, Grommet Mounting	1
56	28545	Grommet, Plastic	1
57	650643	Screw, Phil. Pan. Hd. Thread Forming	1
58	32698	Link, Governor-to-Throttle	1
59	33668	Screen, Starter Cup	1
60	32871	Lever, Governor	1
61	32576	Seal, Snow Guard	1
62	34127	Guard, Starter	1
63	31334	Rod, Governor	1
64	133342	Baffle, Blower Housing	1
65	650561	Screw, Phil. Hex Hd. Sems	2
67	28277	Washer, Flat	1
69	29212	Screw, Hex Slotted Hd. Sems	2
70	33663A	Housing, Blower	1
71	650763	Washer, Belleville	1
72	650607	Nut, Flywheel	1
73	29752	Nut & Lockwasher	4
76	650735	Screw, Hex Hd. Sems	1
79	610118	Cover, Spark Plug	1
80	33344	Baffle, Heat	1
81	650168	Washer, Flat	1
82	33341	Extension, Baffle	1
83	650701	Screw, Phil. Hex Washer Hd. Self-Drilling	1
84	6202	Screw, Hex Hd. Cap	1
85	650601	Screw, Phil. Fil. Hd.	1
87	*26756	Gasket, Carburetor	2
89	29752	Nut & Lockwasher	2
92	34213	Grommet, Carburetor Cover	1
93	650257	Screw, Phil. Pan Hd. Sems	2
94	32398	Bracket, Carburetor Cover	1
95	28820	Screw, Phil. Fil. Hd. Mach. Sems	2
96	34134	Cover, Carburetor	1
97	30590A	Washer, Flat	1
102	*33670	Gasket, Muffler	1
103	33697	Muffler	1
104	650327	Screw, Fil. Slotted Hd. Sems	2
105	26460	Clamp, Fuel Line	4
106	30574	Shaft, Mechanical Governor	1
107	30591	Gear Assy., Governor (Incl. No. 97)	1
108	29193	Ring, Retaining	2

†In original production the speed control assembly is riveted to the blower housing baffle. Replacement speed control assembly includes screws and nuts for mounting. Replacement baffle has threaded holes.

ENGINE, TECUMSEH MODEL NO. HS50-67074 B (Continued)

(5 H.P. SNOWTHROWER MODEL NO. 38040)

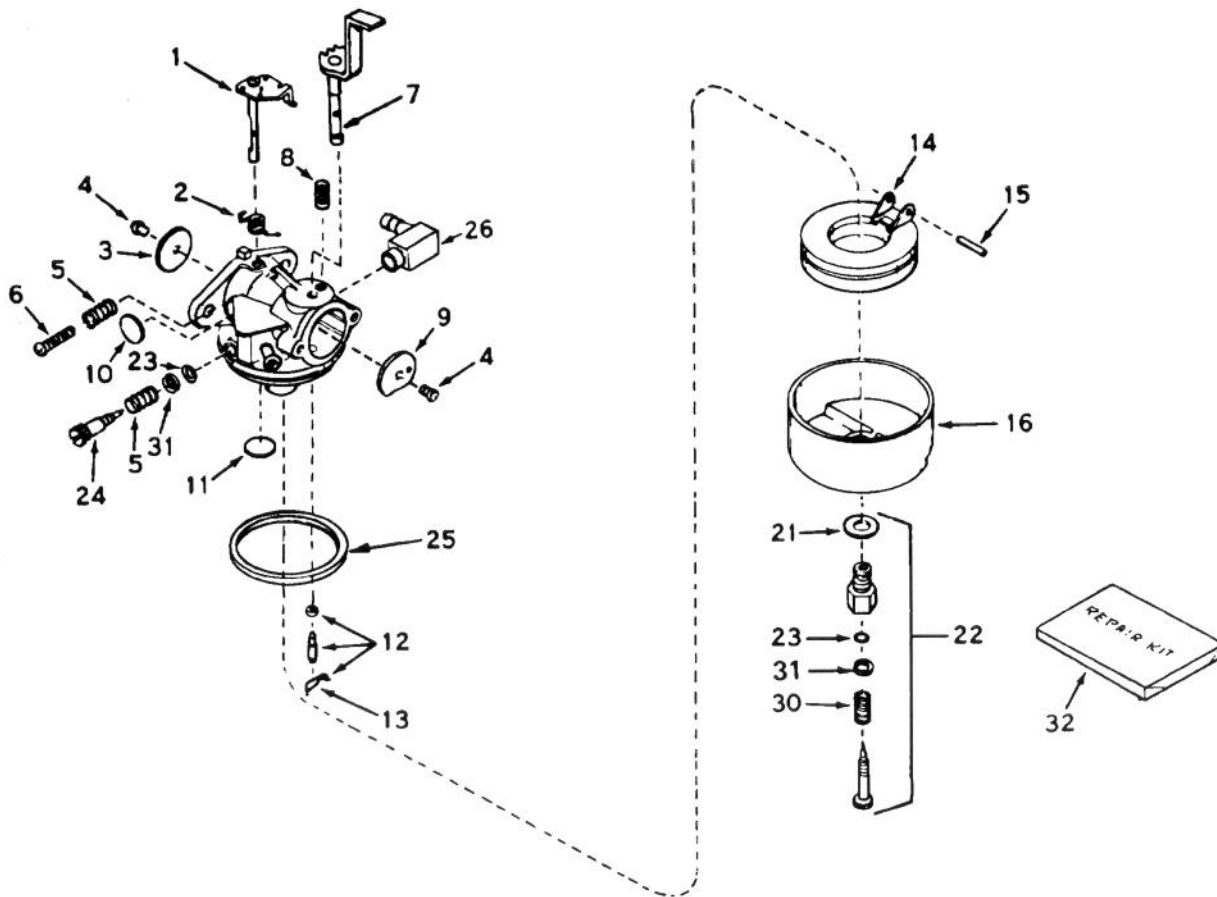


ENGINE, TECUMSEH MODEL NO. HS50-67074 B (Continued)
(5 H.P. SNOWTHROWER MODEL NO. 38040)

Ref. No.	Part No.	Description	No. Used
109	30588A	Spool, Governor	1
111	28371B	Bracket, Fuel Tank - Upper	1
112	32762	Bracket, Fuel Tank - Lower	1
113	650675	Washer, Flat	1
114	33120	Tank Assy., Fuel (Incl. Nos. 115 & 116)	1
115	30998B	Cap, Fuel Tank	1
116	650665	Screw, Hex Hd. Sems	4
117	32961	Valve, Fuel Shut-Off	1
118	30705	Line, Fuel	1
119	29774	Line, Fuel	1
120	650128	Screw, Fil. Slotted Hd. Sems	1
121	29745	Extension, Blower Housing	1
122	27275	Clip, Hi-Tension	1
124	32182	Primer Assy. (Incl. Nos. 125, 126 & 127)	1
125	32183	Bulb, Primer	1
126	32184	Body, Primer	1
127	32312	Retainer, Primer Bulb	1
128	32180A	Line, Primer	1
129	610951	Key, Flywheel	1
130	34212	Bracket, Hold Down	1
131	650768	Screw, Hex Hd. Thread Forming w/Conical Washer	1
134	33667	Cup, Starter	1
137	28212	Spacer	2
138	16644	Washer	2
139	31335	Clamp, Governor Lever	1

Ref. No.	Part No.	Description	No. Used
140	650548	Screw, Hex Slotted Washer Hd.	1
142	650805	Screw, Hex Hd. w/Belleville Washer	1
148	*29673	Gasket, Oil Filler	1
149	650549	Screw, Fil. Slotted Hd. Mach.	1
150	31342	Spring, Compression	1
151	†30322	Nut & Lockwasher	2
152	†650139	Screw, Fil. Slotted Hd. Sems	2
153	34241	Wire, Ground	1
154	34123	Bracket, Speed Control	1
155	34125	Control, Choke	1
156	28942	Screw, Hex Hd. Slotted Sems	2
157	27793	Clip, Conduit	2
160	†33879A	Bracket Assy., Control (Incl. Nos. 149, 150, 151 & 152)	1
161	33876	Gasket, Stator	1
162	610944A	Magneto (The complete magneto is not available as an assembly. The magneto number is shown for reference purposes only. Order component parts individually, as shown in parts list.)	1
163	631916	Carburetor (Incl. 1 of No. 87)	1
164	590473	Starter Assy., Rewind	1
165	33683	Gasket Set (Incl. items marked *)	1

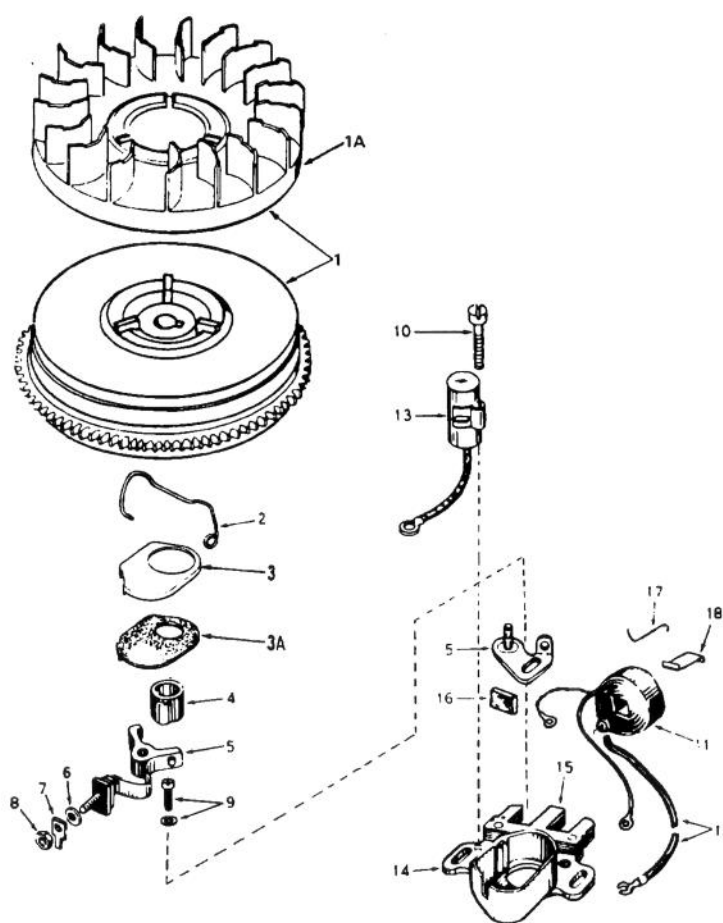
†In original production the speed control assembly is riveted to the blower housing baffle. Replacement speed control assembly includes screws and nuts for mounting. Replacement baffle has threaded holes.



**CARBURETOR NO. 631916
(5 H.P. SNOWTHROWER MODEL NO. 38040)**

Ref. No.	Part No.	Description	No. Used
1	631615	Shaft & Lever Assy., Throttle	1
2	631279	Spring, Throttle Return	1
3	631036	Shutter, Throttle	1
4	650506	Screw	2
5	630766	Spring, Idle Regulating Screw	2
6	650417	Screw, Idle Regulating	1
7	631908	Shaft & Lever Assy., Choke	1
8	630735	Spring, Choke Stop	1
9	631815	Shutter, Choke	1
10	*630748	Plug, Welch	1
11	*631027	Plug, Welch	1
12	*631021	Inlet Needle, Seat & Clip Assy. (Incl. No. 13)	1
13	631022	Clip, Inlet Needle	1

Ref. No.	Part No.	Description	No. Used
14	631023	Float, Carburetor	1
15	*631024	Shaft, Float	1
16	631867	Bowl, Float	1
21	27110	Gasket, Bowl-to-Body	1
22	*31839	Adjustment Screw Assy., Main (Incl. Nos. 21, 23, 30 & 31)	1
23	*630740	"O" Ring, Adjustment Screw	2
24	*631078	Screw, Idle Adjustment	1
25	*631028	Gasket, Bowl-to-Body	1
26	631807	Fitting, Fuel Inlet	1
30	630738	Spring, Main Adjustment Screw	1
31	630739	Washer, Flat	2
32	31840	Repair Kit (Incl. Items Marked *)	1



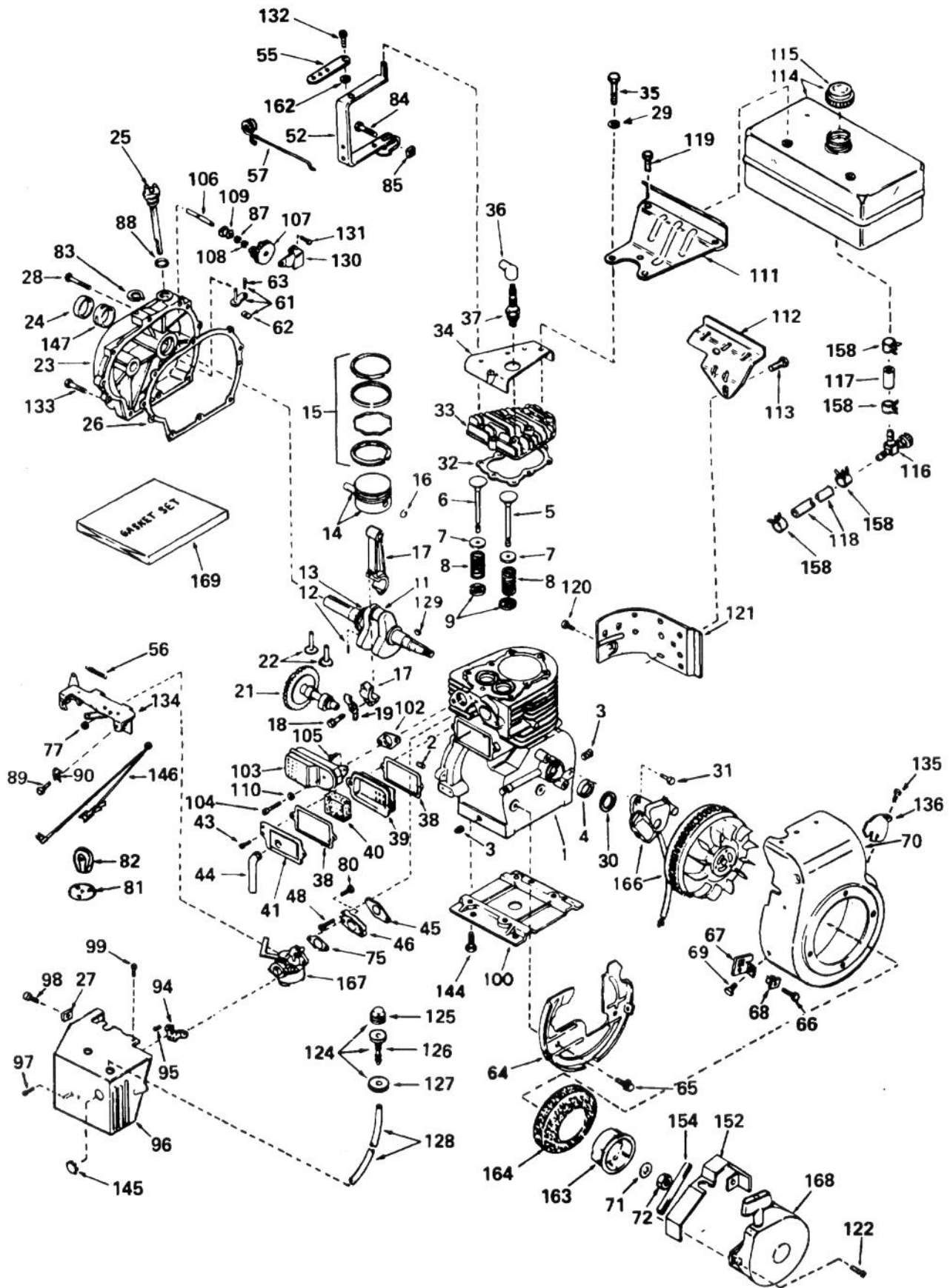
MAGNETO NO. 610944A
(5 H.P. SNOWTHROWER MODEL NO. 38040)

Ref. No.	Part No.	Description	No. Used
1	33701B	Flywheel (Incl. Nos. 1A, 3 & 3A)	1
1A	610933	Fan	1
2	30551	Spring, Breaker box dust cover	1
3	610947	Cover, Dust	1
3A	610950	Gasket, Dust cover	1
4	30992	Cam, Breaker	1
5	30547A	Contact Assy., Breaker	1
6	610385	Washer, Terminal	1
7	33356	Tab, Ground terminal	1
8	610408	Nut, Terminal	1
9	29181	Screw & Washer, Breaker	1
10	610593	Screw, Condenser	1
11	30560A	Coil Assy. (Incl. No. 12)	1

Ref. No.	Part No.	Description	No. Used
12	30554	Wire, Lead	1
13	30548A	Condenser	1
14	30545	Core & Plate	1
15	30561B	Stator Assy. (Incl. Nos. 2, 3, 3A, 5 thru 14 & 16 thru 18)	1
16	30549	Felt, Cam wiper	1
17	31311	Clip, Coil locking	1
18	29629	Spring, Coil wedge	1

*The complete magneto is not available as an assembly. The magneto number is shown for reference purposes only. Order component parts individually, as shown in parts list.

ENGINE, TECUMSEH MODEL NO. H70-130176D (7 H.P. SNOWTHROWER MODEL NO. 38050)



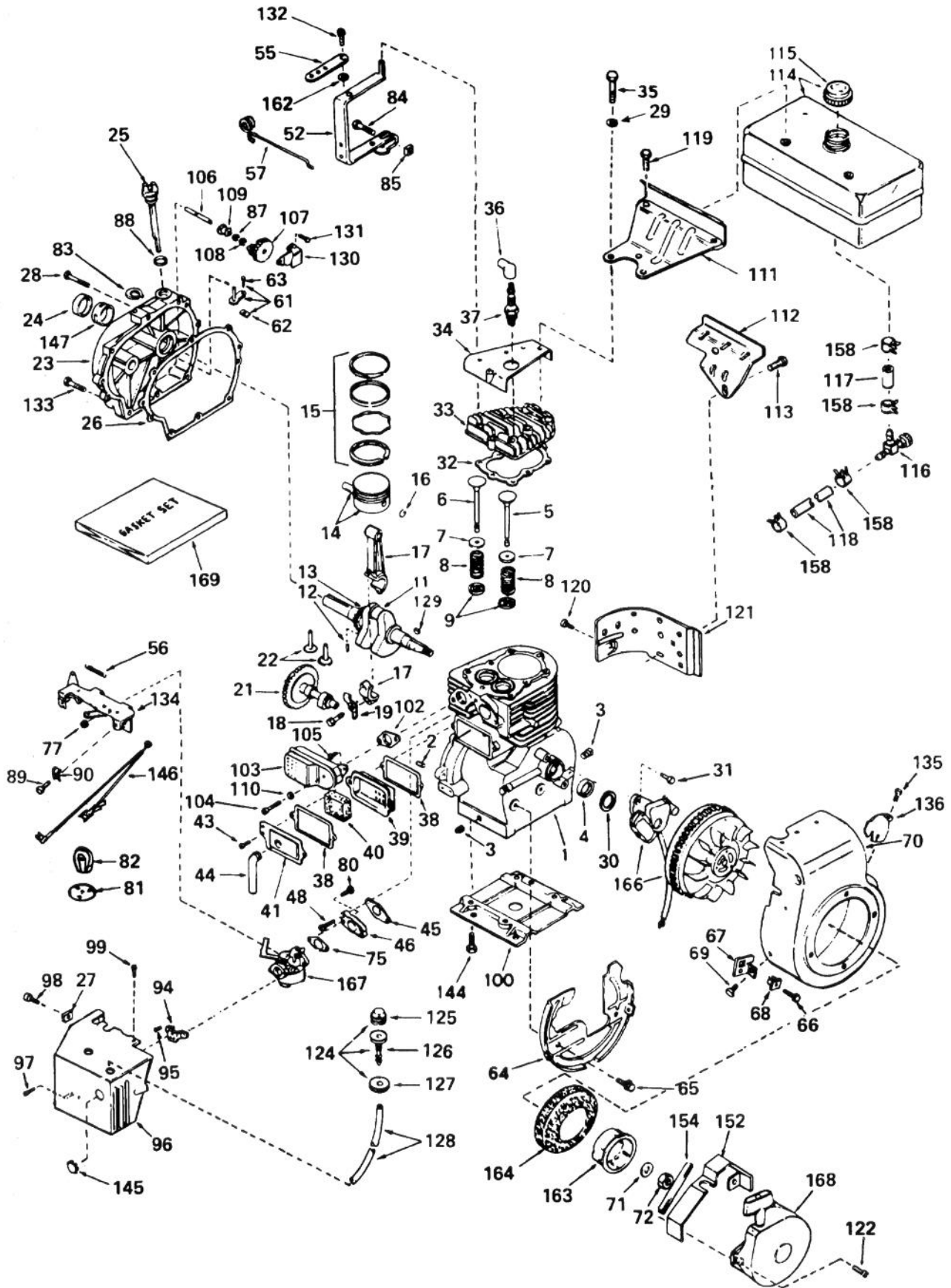
ENGINE, TECUMSEH MODEL NO. H70-130176D
(7 H.P. SNOWTHROWER MODEL NO. 38050)

Ref. No.	Part No.	Description	No. Used
1	32586B	Cylinder Assy. (Incl. Nos. 2, 3 & 4)	1
2	27652	Pin, Dowel	2
3	27642	Plug, Sq. Hd. Pipe (Oil Drain)	2
4	32630	Seal, Oil	1
5	32783	Valve, Intake (Std.) (Incl. No. 9)	1
5	32784	Valve, Intake (1/32" oversize) (Incl. No. 9)	1
6	27878A	Valve, Exhaust (Std.) (Incl. No. 9)	1
6	27880A	Valve, Exhaust (1/32" oversize) (Incl. No. 9)	1
7	27882	Cap, Upper Valve Spring	2
8	27881	Spring, Valve	2
9	32581	Cap, Lower Valve Spring	2
11	32587	Crankshaft Assy. (Incl. Nos. 12 & 13)	1
12	29783	Pin, Crankshaft Gear	1
13	27884	Gear, Crankshaft	1
14	32592	Piston & Pin Assy. (Incl. 2 of No. 16) (Std.)	1
14	32593	Piston & Pin Assy. (Incl. 2 of No. 16) (.010 oversize)	1
14	32594	Piston & Pin Assy. (Incl. 2 of No. 16) (.020 oversize)	1
15	32595	Ring Set, Piston (Std.)	1
15	32596	Ring Set, Piston (.010 oversize)	1
15	32597	Ring Set, Piston (.020 oversize)	1
16	27888	Ring, Piston Pin Retaining	2
17	32591C	Rod Assy., Connecting (Incl. Nos. 18 & 19)	1
18	650662A	Bolt, Connecting Rod	2
19	34242	Dipper, Oil	1
21	32115	Camshaft (Mechanical Compression Release)	1
22	34034	Lifter, Valve	2
23	31303B	Cover, Cylinder (Incl. Nos. 24, 106 & 147)	1
24	28427	Seal, Oil	1
25	31297	Dipstick, Oil (Incl. No. 88)	1
26	*30684	Gasket, Cylinder Cover	1
27	650764	Nut, "U" Type	1
28	650488	Screw, Hex Hd. Sems	7
29	650691	Washer, Flat	1
30	33876	Gasket, Stator	1
31	650489	Screw, Hex Hd. Sems	2
32	*32631	Gasket, Cylinder Head	1
33	30938A	Head, Cylinder	1
34	30939A	Cover, Cylinder Head	1
35	650697A	Screw, Hex Washer Hd.	8
36	610118	Cover, Spark Plug	1

Ref. No.	Part No.	Description	No. Used
37	33636	Plug, Spark (Champion J-8 or equivalent) Except for Canada	1
37	34251	Resistor Spark Plug (Canadian Regulations require RJ-17LM Resistor Spark Plug)	1
38	*27896	Gasket, Valve Spring Cover	2
39	28423	Body Assy., Breather	1
40	28424	Element, Breather	1
41	28425	Cover, Valve Spring	1
43	650128	Screw, Fil. Slotted Hd. Sems	2
44	27627	Tube, Breather	1
45	*27915	Gasket, Intake	1
46	30195A	Flange, Carburetor (Incl. Nos. 77 & 80)	1
48	30196	Screw, Fil. Hd. Mach. PCR	2
52	32326A	Lever, Governor	1
55	30205	Bracket, Governor Adjusting	1
56	30826	Spring, Extension	1
57	30824	Link, Governor-to-Throttle	1
61	30699C	Rod Assy., Governor (Incl. Nos. 62 & 63)	1
62	30700	Yoke, Governor	1
63	650494	Screw, Phil. Fil. Hd. Sems	1
64	29536	Baffle, Blower Housing	1
65	650561	Screw, Phil. Hex Hd. Sems	2
66	650643	Screw, Phil. Pan Hd. Thread Forming	1
67	34126	Bracket, Grommet Mounting	1
68	28545	Grommet, Plastic	1
69	29747A	Screw, Hex Hd. Cap Sems	2
70	32158C	Housing, Blower (Incl. Nos. 135 & 136)	1
71	650490	Washer, Belleville	1
72	8116	Nut, Crankshaft	1
75	*31688	Gasket, Carburetor	1
77	29752	Nut & Lockwasher	2
80	650572	Screw, Phil. Flat Hd. Sems	2
81	34132	Plate, Choke Indicator	1
82	32410	Knob, Speed Control	1
83	29642	Ring, Retaining	1
84	29826	Screw, Hex Slotted Washer Hd. Mach.	1
85	29216	Nut, Square	1
87	30590A	Washer, Flat	1
88	*29673	Gasket, Oil Dipstick	1
89	28942	Screw, Hex Slotted Hd. Sems	1
90	27793	Clip, Conduit	1
94	32398	Bracket, Carburetor Cover	1
95	28820	Screw, Phil. Fil. Hd. Mach. Sems	2
96	34217	Cover, Carburetor	1
97	650257	Screw, Phil. Pan Hd. Sems	2
98	650760	Screw, Phil. Pan Hd.	1

ENGINE, TECUMSEH MODEL NO. H70-130176 D (Continued)

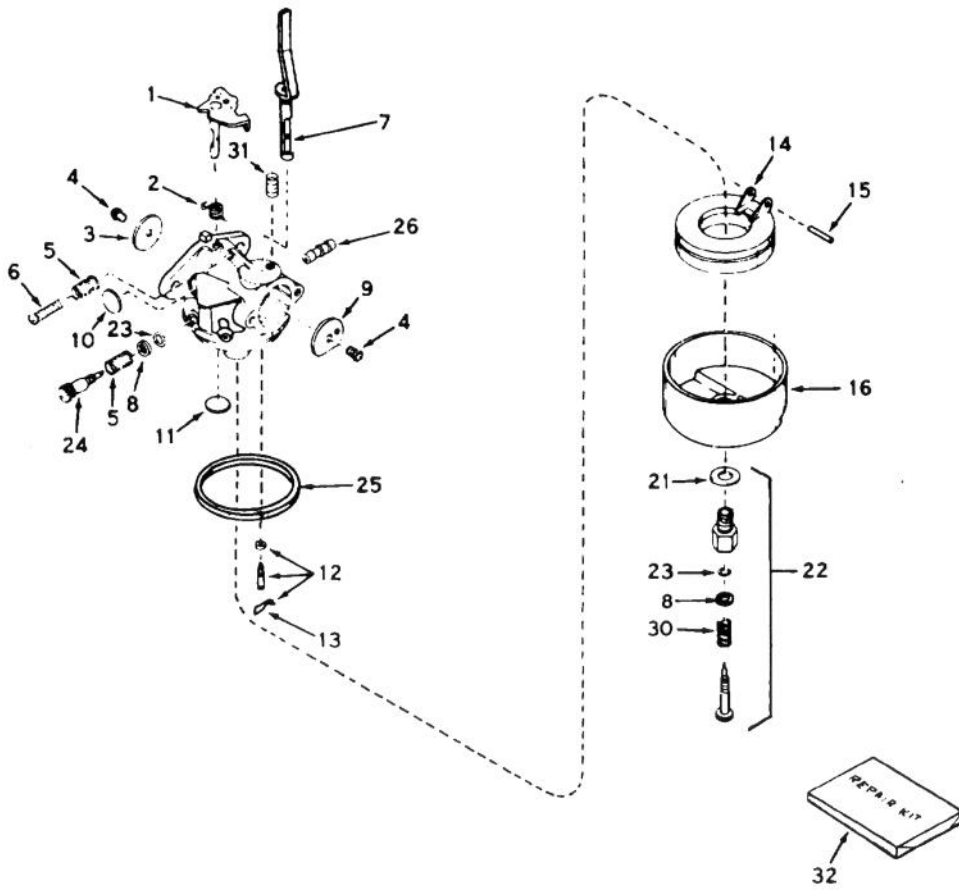
(7 H.P. SNOWTHROWER MODEL NO. 38050)



ENGINE, TECUMSEH MODEL NO. H70-130176D (Continued)
(7 H.P. SNOWTHROWER MODEL NO. 38050)

Ref. No.	Part No.	Description	No. Used
99	650765	Screw, Hex Washer Hd. Self-Tap	1
100	29538	Base, Engine Mounting	1
102	*27930	Gasket, Muffler	1
103	32401	Muffler	1
104	650694	Screw, Hex Hd. Cap	1
105	30196	Screw, Fil. Hd. Mach. PCR	1
106	31845	Shaft, Mechanical Governor	1
107	30591	Gear Assy., Governor (Incl. No. 87)	1
108	29193	Ring, Retaining	1
109	30588A	Spool, Governor	1
110	26073	Washer, Flat	1
111	34159	Plate, Fuel Tank Mounting	1
112	34158	Bracket, Fuel Tank Mounting	1
113	650561	Screw, Phil. Hex Hd. Sems	1
114	34156	Tank Assy., Fuel (Incl. No. 115)	1
115	30998B	Cap, Fuel Tank	1
116	32961	Valve, Shut-Off	1
117	29774	Line, Fuel	1
118	30705	Line, Fuel	1
119	650665	Screw, Hex Hd. Sems	2
120	650128	Screw, Fil. Slotted Hd. Sems	1
121	30622	Extension, Blower Housing	1
122	29716	Screw, Phil. Pan Hd. Sems	4
124	32182	Primer Assy. (Incl. Nos. 125, 126 & 127)	1
125	32183	Bulb, Primer	1
126	32184	Body, Primer	1
127	32312	Retainer, Primer Bulb	1
128	32180A	Line, Primer	1
129	32589	Key, Flywheel	1

Ref. No.	Part No.	Description	No. Used
130	31843A	Bracket, Governor Gear	1
131	28763	Screw, Hex Washer Hd. Thread Forming	2
132	650548	Screw, Hex Slotted Washer Hd.	1
133	650493	Screw, Hex Hd. Sems	1
134	33108A	Control Assy., Remote Speed (Incl. No. 56)	1
135	650736	Screw, Phil. Pan Hd.	1
136	33013	Cover, Starter Bubble	1
144	650542	Screw, Hex Hd. Cap	4
145	31291	Plug, Cover	1
146	34240	Wire, Ground	1
147	31546	Bushing, Crankshaft	1
152	34127	Guard, Starter	1
154	32576	Seal, Snow Guard	1
158	26460	Clamp, Fuel Line	4
162	29918	Lockwasher, No. 8 E.T.	1
163	32125	Cup, Starter	1
164	590417	Screen, Starter Cup	1
166	610694A	Magneto (The complete magneto is not available as an assembly. The magneto number is shown for reference purposes only. Order component parts individually, as shown in parts list.)	1
167	631920	Carburetor (Incl. No. 75)	1
168	590473	Starter Assy., Rewind	1
169	33239	Gasket Set (Incl. items marked *)	1

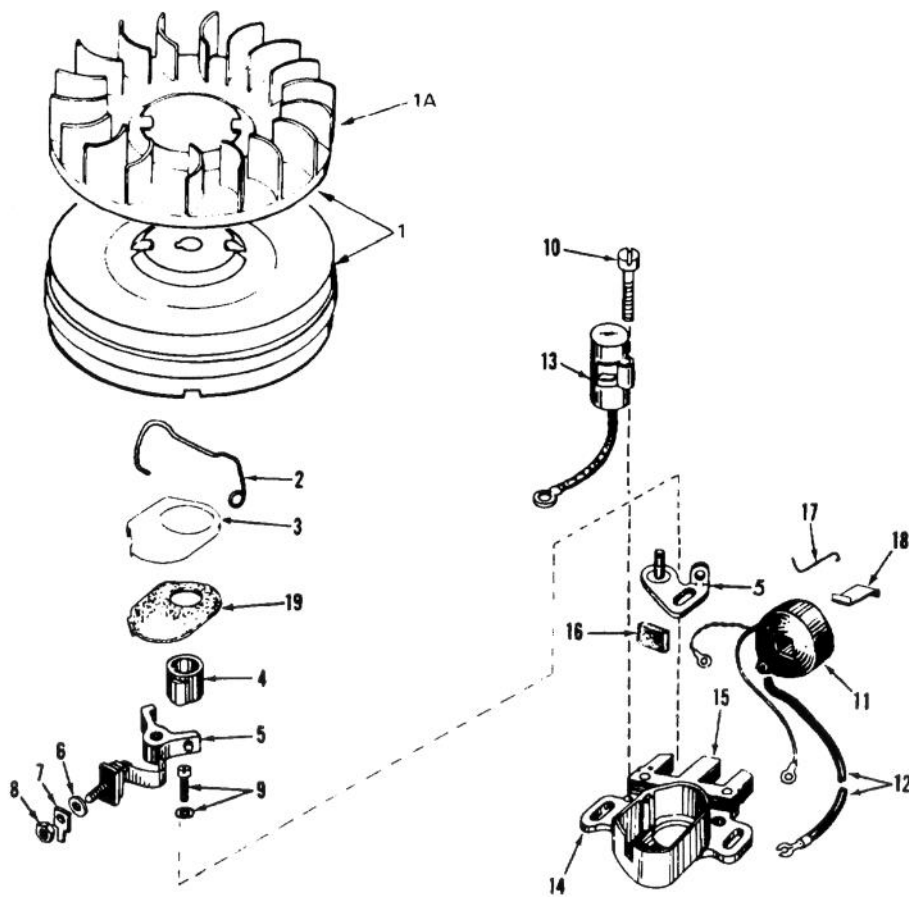


CARBURETOR NO. 631920
(7 H.P. SNOWTHROWER MODEL NO. 38050)

Ref. No.	Part No.	Description	No. Used
1	31834	Shaft & Lever Assy., Throttle	1
2	630731	Spring, Throttle Return	1
3	631036	Shutter, Throttle	1
4	650506	Screw	2
5	630766	Spring, Idle Regulating Screw	2
6	650417	Screw, Idle Regulating	1
7	631913	Shaft & Lever Assy., Choke	1
8	630739	Washer, Flat	2
9	631815	Shutter, Choke	1
10	*630748	Plug, Welch	1
11	*631027	Plug, Welch	1
12	*631021	Inlet Needle, Seat & Clip Assy. (Incl. No. 13)	1
13	631022	Clip, Inlet Needle	1

Ref. No.	Part No.	Description	No. Used
14	631023	Float, Carburetor	1
15	*631024	Shaft, Float	1
16	631867	Bowl, Float	1
21	27110	Gasket, Bowl-to-Body	1
22	*31839	Adjustment Screw Assy., Main (Incl. Nos. 8, 21, 23 & 30)	1
23	*630740	"O" Ring, Adjustment Screw	2
24	*631078	Screw, Idle Adjustment	1
25	*631028	Gasket, Bowl-to-Body	1
26	631803	Fitting, Fuel Inlet	1
30	630738	Spring, Main Adjustment Screw	1
31	630735	Spring, Choke Stop	1
32	31840	Repair Kit (Incl. Items Marked *)	1

*Not Illustrated

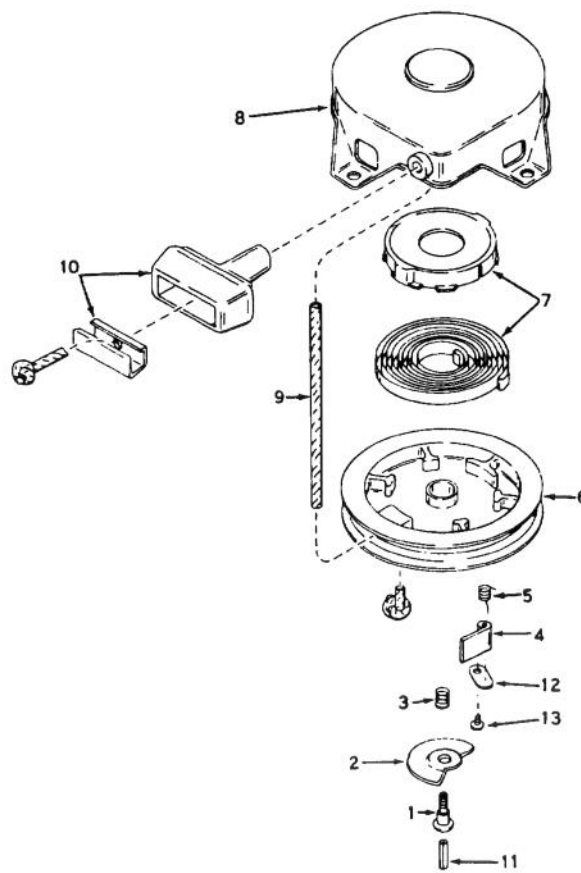


MAGNETO NO. 610694A
(7 H.P. SNOWTHROWER MODEL NO. 38050)

Ref. No.	Part No.	Description	No. Used
1	30811A	Flywheel (Incl. No. 1A)	1
1A	610934	Fan	1
2	30551	Spring, Breaker box	1
3	610947	Cover, Breaker box dust	1
4	30992	Cam, Breaker	1
5	30547A	Contact Assy., Breaker	1
6	610385	Washer, Terminal	1
7	33356	Tab, Ground terminal	1
8	610408	Nut, Terminal	1
9	29181	Screw & Washer, Breaker	1
10	610593	Screw, Condenser fastening	1
11	30560A	Coil Assy. (Incl. No. 12)	1
12	30554	Wire, Lead	1
13	30548A	Condenser	1

Ref. No.	Part No.	Description	No. Used
14	30545	Core & Plate	1
15	30561B	Stator Assy. (Incl. Nos. 2, 3, 5 thru 14 & 16 thru 19)	1
16	30549	Felt, Cam wiper	1
17	31311	Clip, Coil locking	1
18	29629	Spring, Coil wedge	1
19	610955	Gasket, Dust cover	1
19	610956	Gasket, Dust cover	1

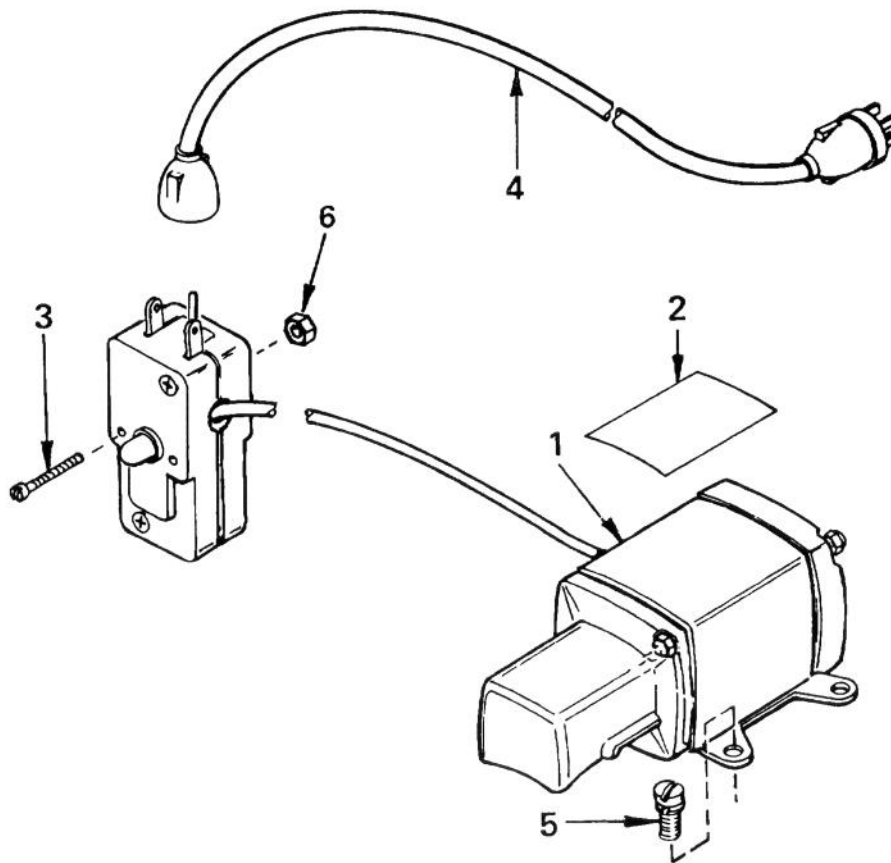
*The complete magneto is not available as an assembly. The magneto number is shown for reference purposes only. Order component parts individually, as shown in parts list.



REWIND STARTER NO. 590473
(5 AND 7 H.P. SNOWTHROWER MODEL NOS. 38040 AND 38050)

Ref. No.	Part No.	Description	No. Used
1	590409A	Screw	1
2	590474	Cam, Dog	1
3	590411	Spring, Brake	1
4	590148	Dog, Starter	1
5	590475	Spring, Dog	1
6	590478	Pulley	1
7	590414	Spring & Keeper Assembly	1

Ref. No.	Part No.	Description	No. Used
8	590415	Housing Assembly, Starter (Incl. #1)	1
9	30691	Rope, Starter	1
10	590387	Handle Assembly, Starter	1
11	590459	Pin, Centering	1
12	590476	Retainer, Dog	1
13	590477	Screw	1

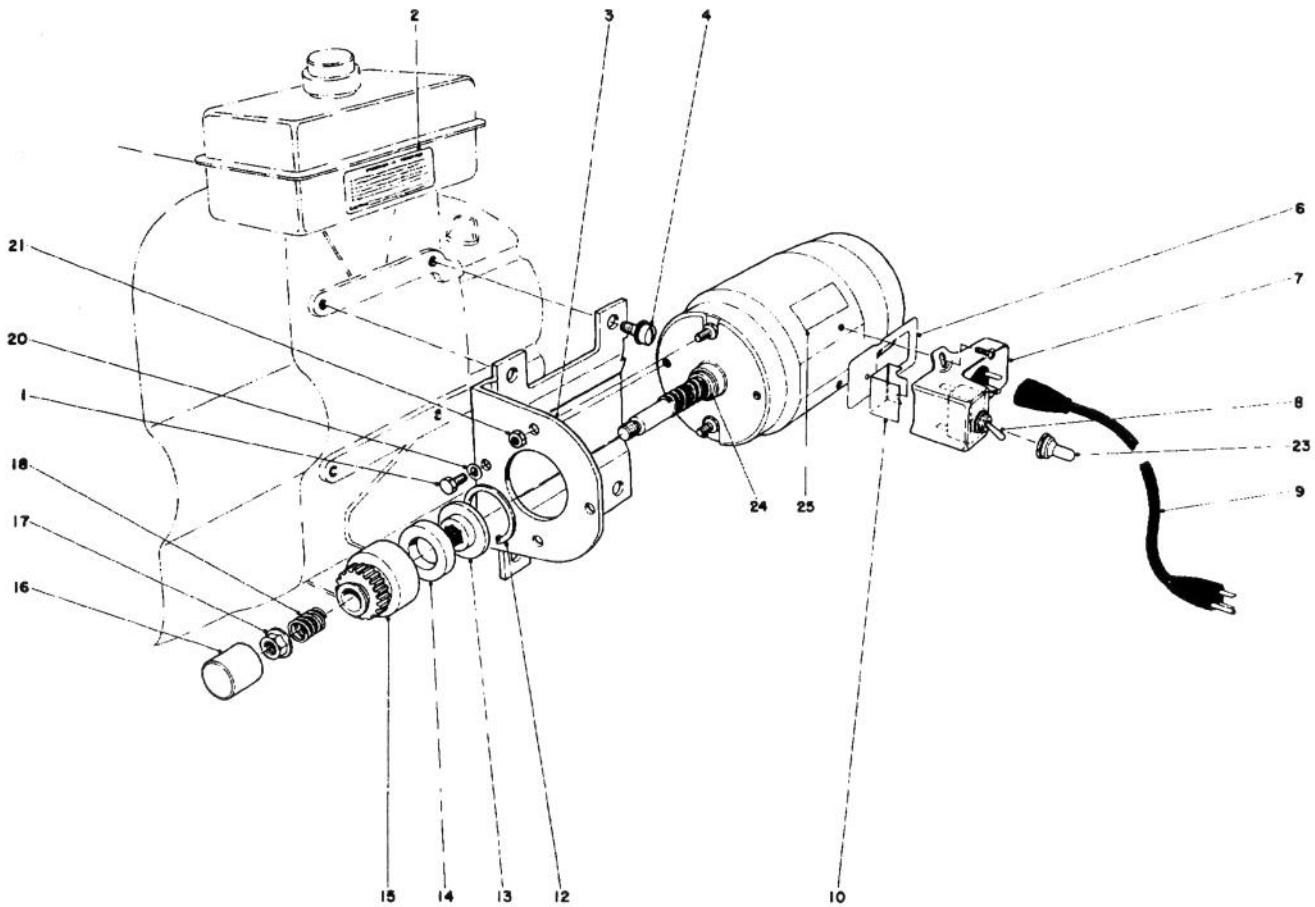


**STARTER MOTOR KIT-MODEL 23-3790
(FOR SNOWTHROWERS MODEL NO. 38040)**

Ref. No.	Part No.	Description	No. Used
1†	33517A	Motor, Cranking (CSA Approved) (Incl. #2 thru 6)	1
2†	34161	Decal	1
3†	650741	Screw, Hex hd. self tap	2

Ref. No.	Part No.	Description	No. Used
4†	32450A	Cord, Extension	1
5†	650759	Screw, Hex washer hd.	3
6†	650742	Nut & Lockwasher	2

†Note: Obtain individual replacement parts from your local Tecumseh Dealer.

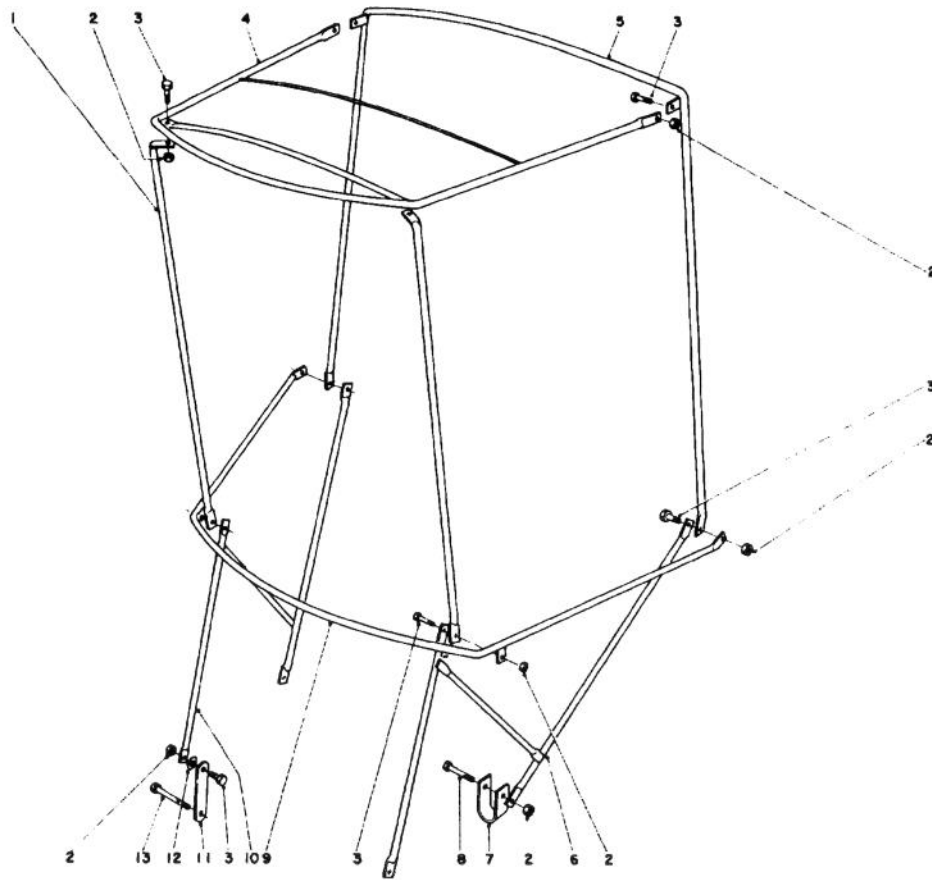


**STARTER MOTOR KIT-MODEL 23-4410
(FOR SNOWTHROWERS MODEL NO. 38050)**

Ref. No.	Part No.	Description	No. Used
1	3290-237	Machine Screw	2
2	21-5140	Instruction Decal	1
3	23-4610	Mounting Bracket	1
4	32140-27	Machine Screw	4
6	23-7680	Gasket	1
7	25-9970	Switch & Plug Housing	1
8	6-1659	Switch (Incl. Ref. #23)	1
9	20-7050	Cord 10 Ft.	1
10	20-7170	Switch Insulator	1
12	32151-42	Retaining Ring	1
13	20-7140	Pinion Nut	1
14	5-4724	Rubber Ring	1

Ref. No.	Part No.	Description	No. Used
15	20-7130	Pinion 16T	1
16	20-7960	Weather Cap	1
17	32128-16	Flanged Locknut	1
18	20-7120	Spring	1
20	3254-1	Int. Tooth Lockwasher	2
21	32149-8	Keys Nut	2
23	218-473	Switch Boot	1
24	23-9590	Spacer	1
25	23-8630	Decal - Warning	1
*	23-4410	Starter Motor Complete	1
*	20-7110	Pinion Assembly (Incl. Ref. Nos. 12 thru 15)	1

*Not Illustrated

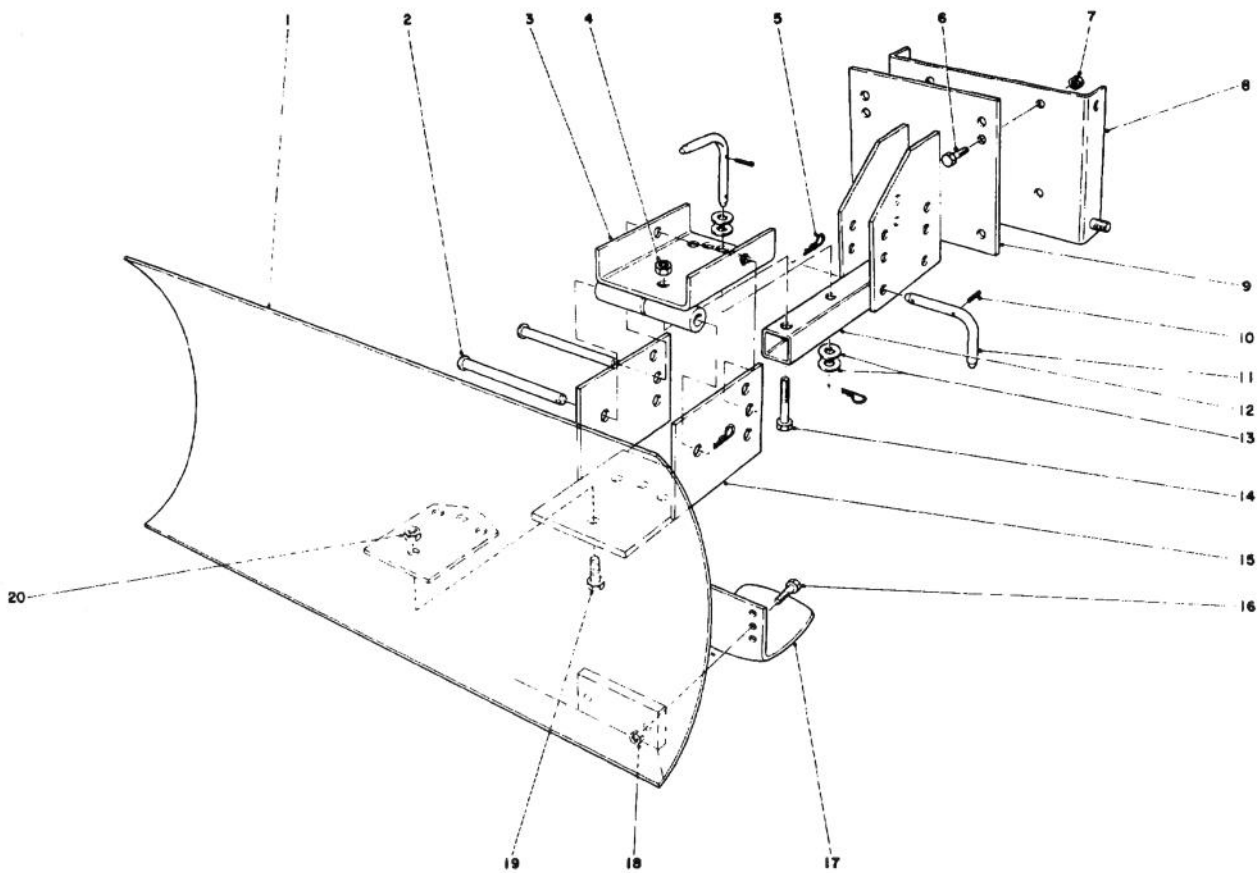


SNOW CAB ASSEMBLY MODEL 12-8100

Ref. No.	Part No.	Description	No. Used
1	12-8040	Front Corner Post	2
2	32146-17	Locknut	12
3	321-4	Capscrew	10
4	12-8010	Top Frame	1
5	12-8030	Rear Vertical Bow	1
6	12-8070	Attaching Bracket, L.H.	1
7	12-8050	"U" Clamp	2

Ref. No.	Part No.	Description	No. Used
8	321-11	Capscrew	2
9	12-8020	Horizontal Curved Bow	1
10	12-8060	Attaching Bracket, R.H.	1
11	20-7260	Mounting Strap	2
12	3255-7	Ext. Tooth Lockwasher	2
13	321-15	Capscrew	2
*	12-8080	Vinyl Cover	1

*Not Illustrated



GRADER BLADE ASSEMBLY MODEL 59051

Ref. No.	Part No.	Description	No. Used
1	7-4374	Blade	1
2	283-38	Pin	2
3	20-5090	Swivel Bracket	1
4	32152-3	Locknut	1
5	3290-322	Hair Pin Cotter	5
6	323-6	Cap screw	4
7	32152-2	Locknut	4
8	22-4920	Mounting Plate Bracket (used with 726 and 832 only)	1
9	20-5170	Mounting Plate	1
10	32121-45	Roll Pin	3
11	20-5100	Pivot Pin	3

Ref. No.	Part No.	Description	No. Used
12	20-5140	Blade Tongue	1
13	3256-5	Flat Washer	4
14	325-11	Cap screw	1
15	20-5130	Blade Adjustment Plate	1
16	322-6	Cap screw	4
17	7-1023	Skid	2
18	32152-1	Locknut	4
19	325-5	Cap screw	4
20	32152-3	Locknut	4
*	20-9950	Air Cleaner Kit (Tecumseh)	1

26 * Not Illustrated