



**Count on it.**

**Parts Catalog**

**Backhoe Fit-Up Kit  
TX 1000 Compact Tool Carrier**

Model No. 23126



# Ordering Replacement Parts

To order replacement parts, please supply the part number, the quantity, and the description of each part desired.

## Understanding Reference Numbers

Each identified part in an illustration has a reference number. The reference number for a part also appears in the parts list, along with other information about the part.

This catalog uses two special reference number formats, one to indicate parts in a service assembly and another to indicate the quantity of a given part in an illustration.

## Service Assembly Reference Numbers

Parts in service assemblies have reference numbers in the form a:b. The a represents the reference number of the entire service assembly and the b represents a sequential number unique to each part within the service assembly.

For example, a wheel assembly might be identified by reference number 6, the tire by 6:1, the valve by 6:2, and the wheel by 6:3. When you order the assembly identified by reference number 6, you receive all parts identified by reference numbers 6:1, 6:2, and 6:3. However, you may also order any part individually. Reference numbers of this type appear in illustration and in parts lists.

## Reference Numbers Indicating Quantity

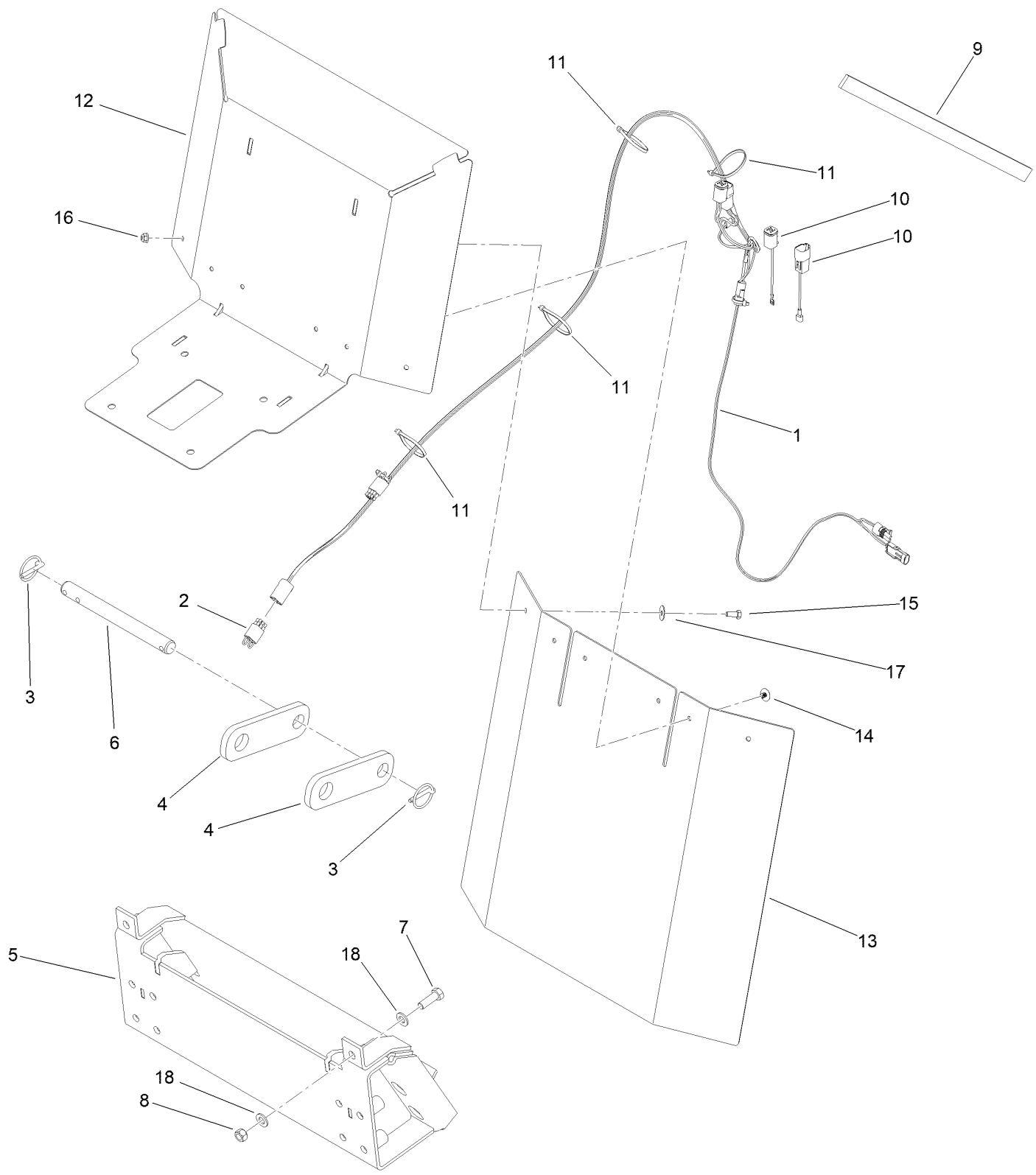
In an illustration, if a reference number indicates more than one part, the reference number has the form nX y. The n represents the quantity of the part, the X is the multiplication symbol, and the y represents the reference number.

For example, in an illustration, the reference number 2X 37 means that two of the parts identified by reference number 37 are indicated.

# Contents

Backhoe Fit-Up Kit Assembly ..... 4  
Plate Attachment Assembly No. 145-0171 ..... 6

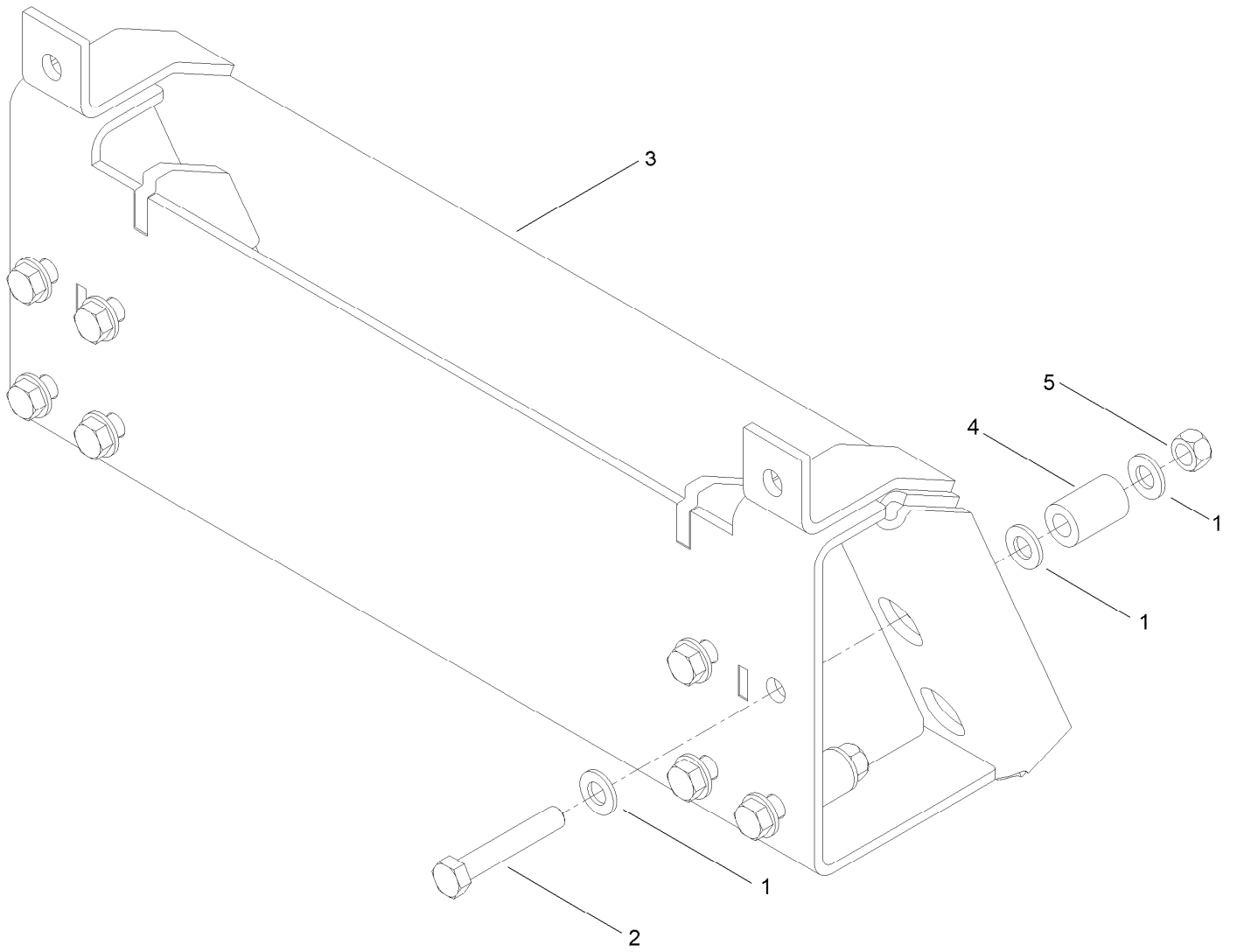
# Backhoe Fit-Up Kit Assembly



## Backhoe Fit-Up Kit Assembly (continued)

<i>Ref.</i>	<i>Part Number</i>	<i>Qty.</i>	<i>Description</i>	<i>Ref.</i>	<i>Part Number</i>	<i>Qty.</i>	<i>Description</i>
1	122-2272	1	Harness-Wire, Kit	10	122-2387	1	Harness-Wire, Kit
2	122-2273	1	Harness-Wire, Jumper	11	3290-378	4	Tie-Cable
3	138-3642	4	Pin-Klik	12	145-3192	1	Shield-Heat, Backhoe Seat
4	144-6751	2	Strap-Cylinder Link	13	145-4900	1	Shield-Heat
5	145-0171	1	Attachment-Plate. ASM	14	130-6721	4	Clip-Tree
6	145-1856	1	Pin-Locking	15	322-3	2	Screw-HH
7	325-6	2	Screw-HH	16	104-8300	2	Nut-HF, NI
8	32153-5	2	Nut-Hex	17	108-4925	2	Washer
9	145-1861	1	Strap - Velcro	18	106-9888	4	Washer-Flat

# Plate Attachment Assembly No. 145-0171



# Plate Attachment Assembly No. 145-0171 (continued)

<i>Ref.</i>	<i>Part Number</i>	<i>Qty.</i>	<i>Description</i>
1	106-9888	24	Washer-Flat
2	139-2634	8	Screw-HH
3	145-0170	1	Plate-Attachment

<i>Ref.</i>	<i>Part Number</i>	<i>Qty.</i>	<i>Description</i>
4	145-0173	8	Spacer-Attachment, Plate
5	32153-5	8	Nut-Hex



**Count on it.**