



**Count on it.**

**Parts Catalog**

**Bagger Kit**

**Z Master® 4000 Series Riding Mower**

Model No. 78463—Serial No. 40000000 and Up



# Ordering Replacement Parts

To order replacement parts, please supply the part number, the quantity, and the description of each part desired.

## Understanding Reference Numbers

Each identified part in an illustration has a reference number. The reference number for a part also appears in the parts list, along with other information about the part.

This catalog uses two special reference number formats, one to indicate parts in a service assembly and another to indicate the quantity of a given part in an illustration.

## Service Assembly Reference Numbers

Parts in service assemblies have reference numbers in the form a:b. The a represents the reference number of the entire service assembly and the b represents a sequential number unique to each part within the service assembly.

For example, a wheel assembly might be identified by reference number 6, the tire by 6:1, the valve by 6:2, and the wheel by 6:3. When you order the assembly identified by reference number 6, you receive all parts identified by reference numbers 6:1, 6:2, and 6:3. However, you may also order any part individually. Reference numbers of this type appear in illustration and in parts lists.

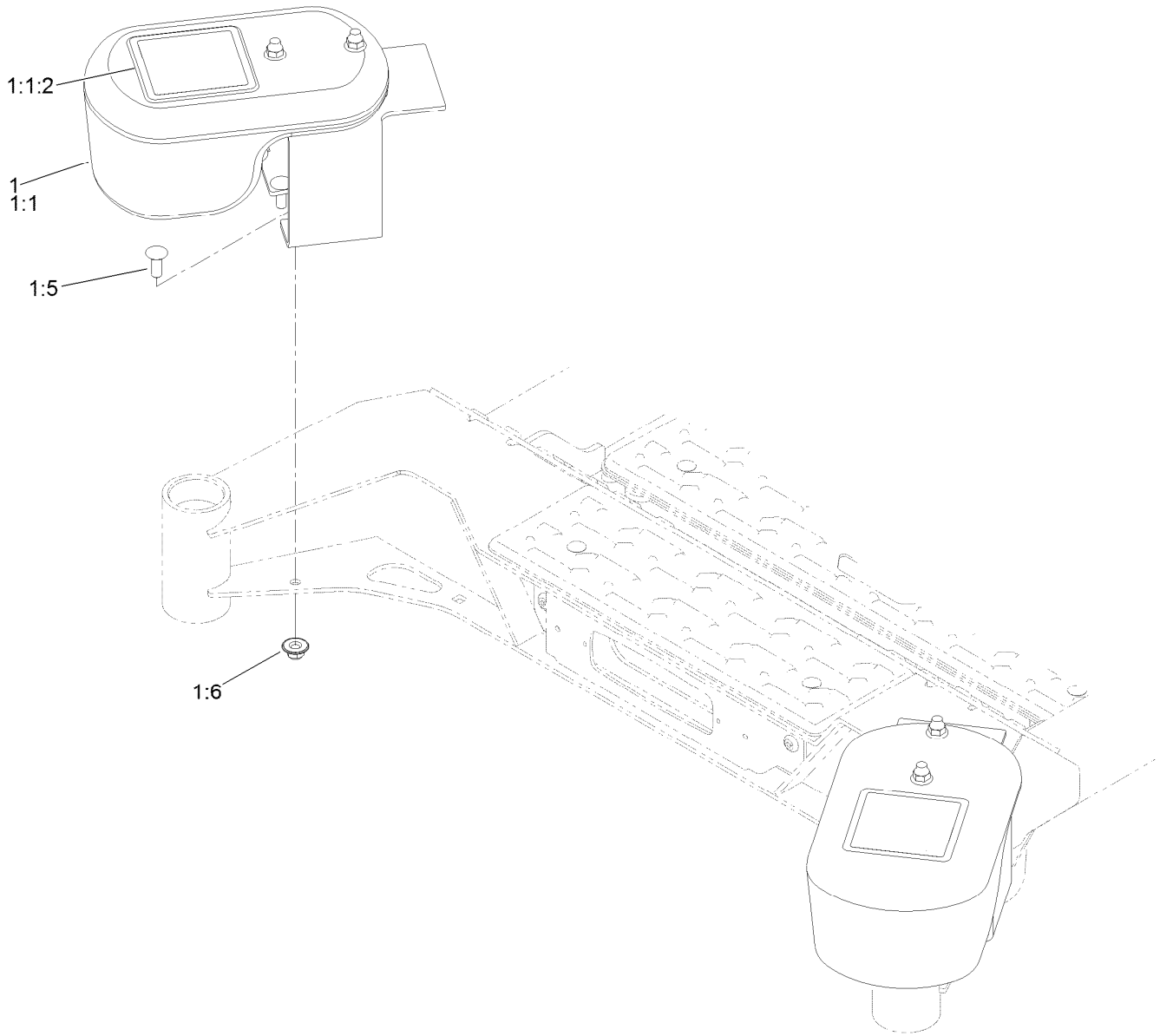
## Reference Numbers Indicating Quantity

In an illustration, if a reference number indicates more than one part, the reference number has the form nX y. The n represents the quantity of the part, the X is the multiplication symbol, and the y represents the reference number.

For example, in an illustration, the reference number 2X 37 means that two of the parts identified by reference number 37 are indicated.

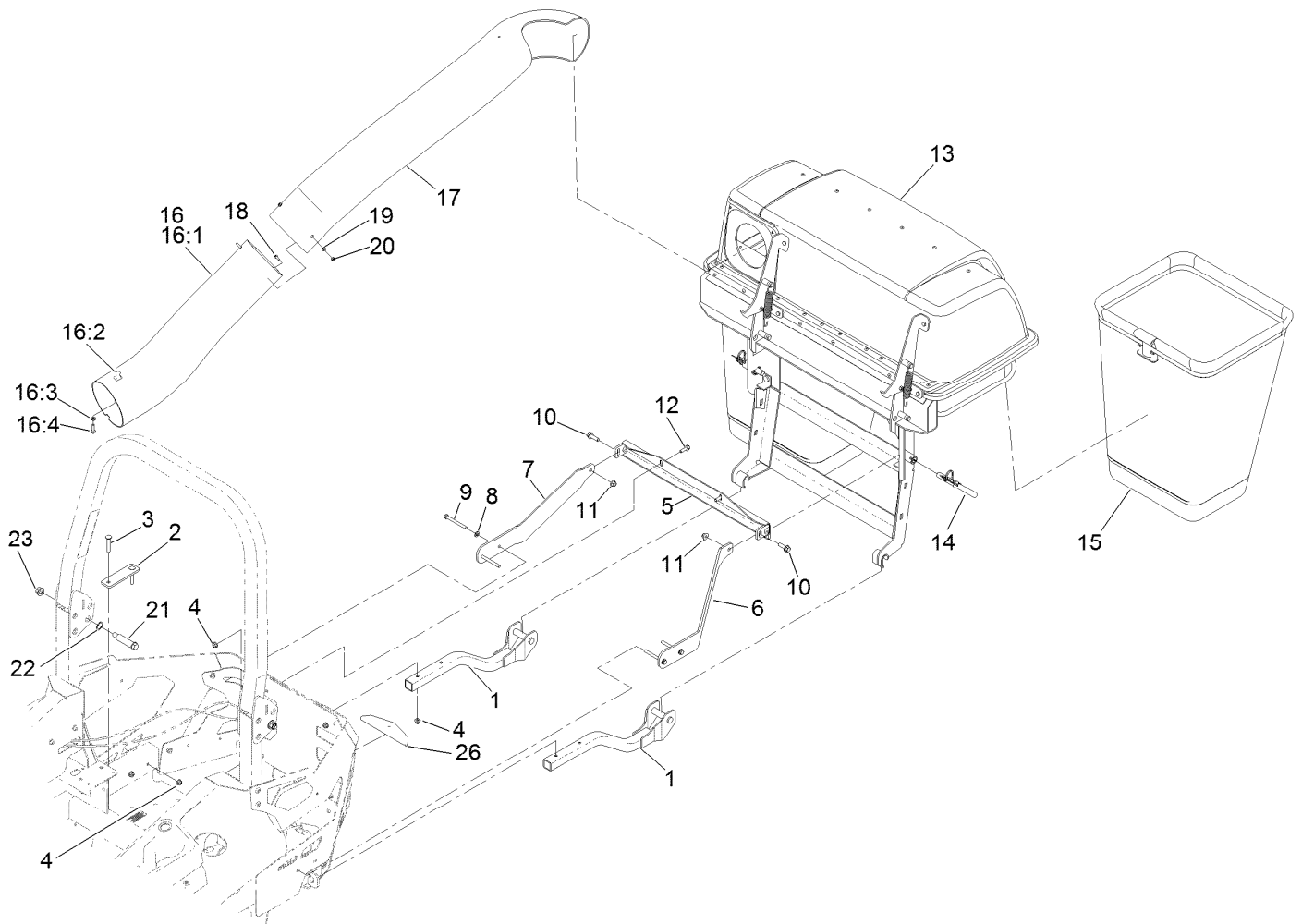
# Contents

- Weight Assembly ..... 4
- Bagger, Mount and Tube Assembly ..... 5
- Twin Bag Hood Assembly No. 126-8579 ..... 6
- Bag Support Frame Assembly No. 103-5166 ..... 8
- Hood Assembly No. 112-2316 ..... 10
- Bag Assembly No. 116-0754 ..... 12



## Weight Assembly

<i>Ref.</i>	<i>Part Number</i>	<i>Qty.</i>	<i>Description</i>
1	144-2660	2	ASM-Caster Weight
1:1	126-7639	1	Weight With Decal ASM
1:1:2	126-4662	1	Decal-Warning, Traction
1:5	3231-22	2	Screw-CARR
1:6	109-6658	2	Nut-Flange, NI

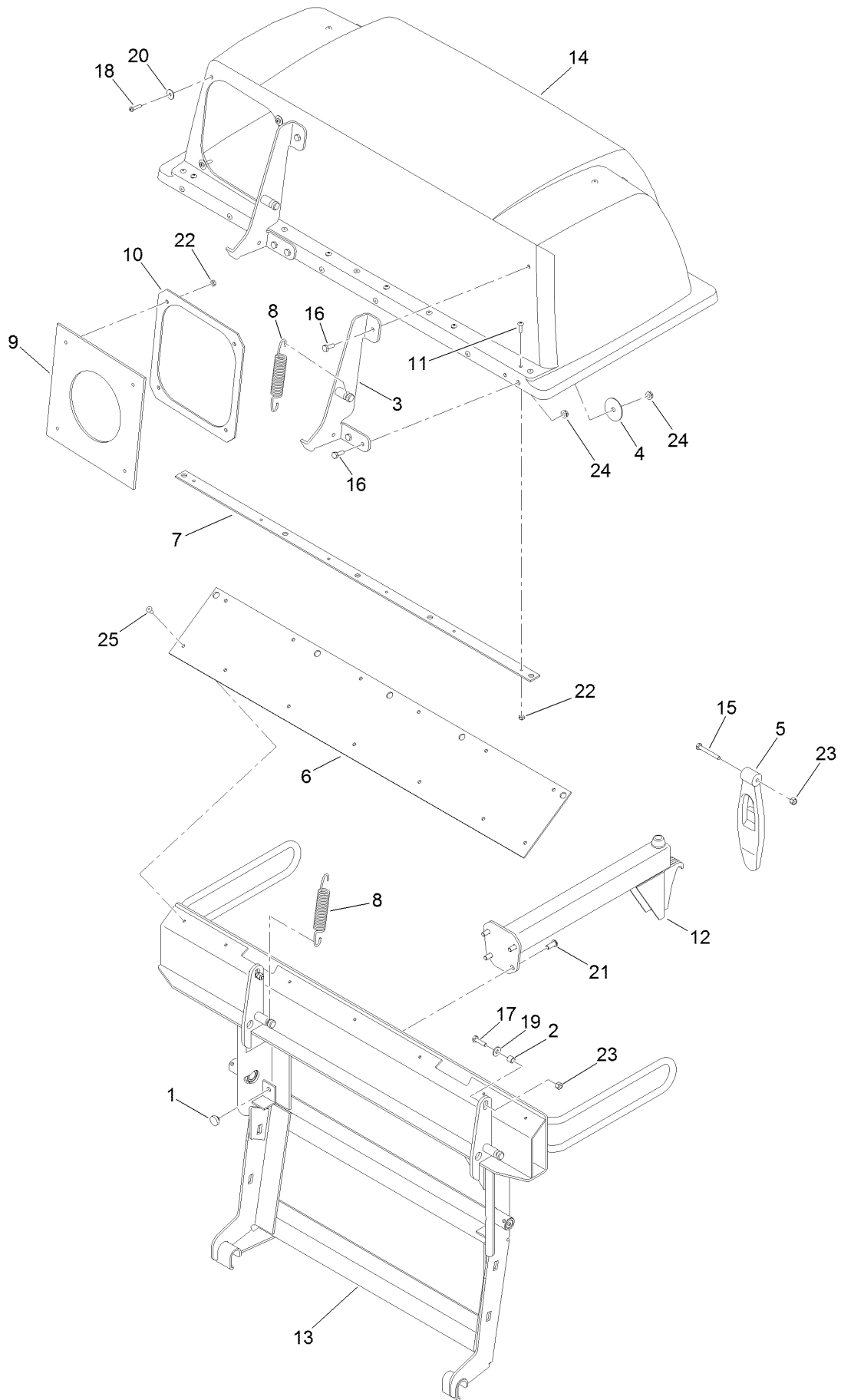


## Bagger, Mount and Tube Assembly

Ref.	Part Number	Qty.	Description	Ref.	Part Number	Qty.	Description
1	144-0427-03	2	Support, Lower [black]	15	116-0754	2	Bag And Frame ASM
2	144-0426-01	2	Plate-Backer	16	116-4128	1	Lower Tube ASM
3	3230-7	4	Bolt-CARR	16:1	116-4495	1	Tube-Lower
4	104-8300	10	Nut-HF, NI	16:2	103-4081	2	Latch-Keeper ●
5	126-9262-03	1	Support-Bagger, Upper	16:3	3256-14	2	Washer-Flat
6	144-0425-01	1	Bracket-Upper, LH	16:4	3290-500	2	Screw-PPH
7	144-0423-01	1	Bracket-Upper, RH	17	109-2036	1	Tube-Upper
8	3256-23	4	Washer-Plain	18	32105-13	3	Screw-HWH
9	126-8742	4	Screw-HH	19	3256-14	3	Washer-Flat
10	119-4061	2	Screw-HHF	20	3296-2	3	Nut-Lock, NI
11	104-8301	2	Nut-HF, NI	21	126-9209	2	Bolt-Shoulder
12	3234-29	2	Screw-HHF	22	119-4164	2	Washer-Wave
13	126-8579	1	Twin Bag Hood ASM	23	99-5107	2	Nut-Lock
14	116-0458	2	Pin-Mount, Bagger	26	126-8299	1	Cover-Hitch

● Kit No. 103-4188 - Contains catch, rubber latch, and mounting hardware

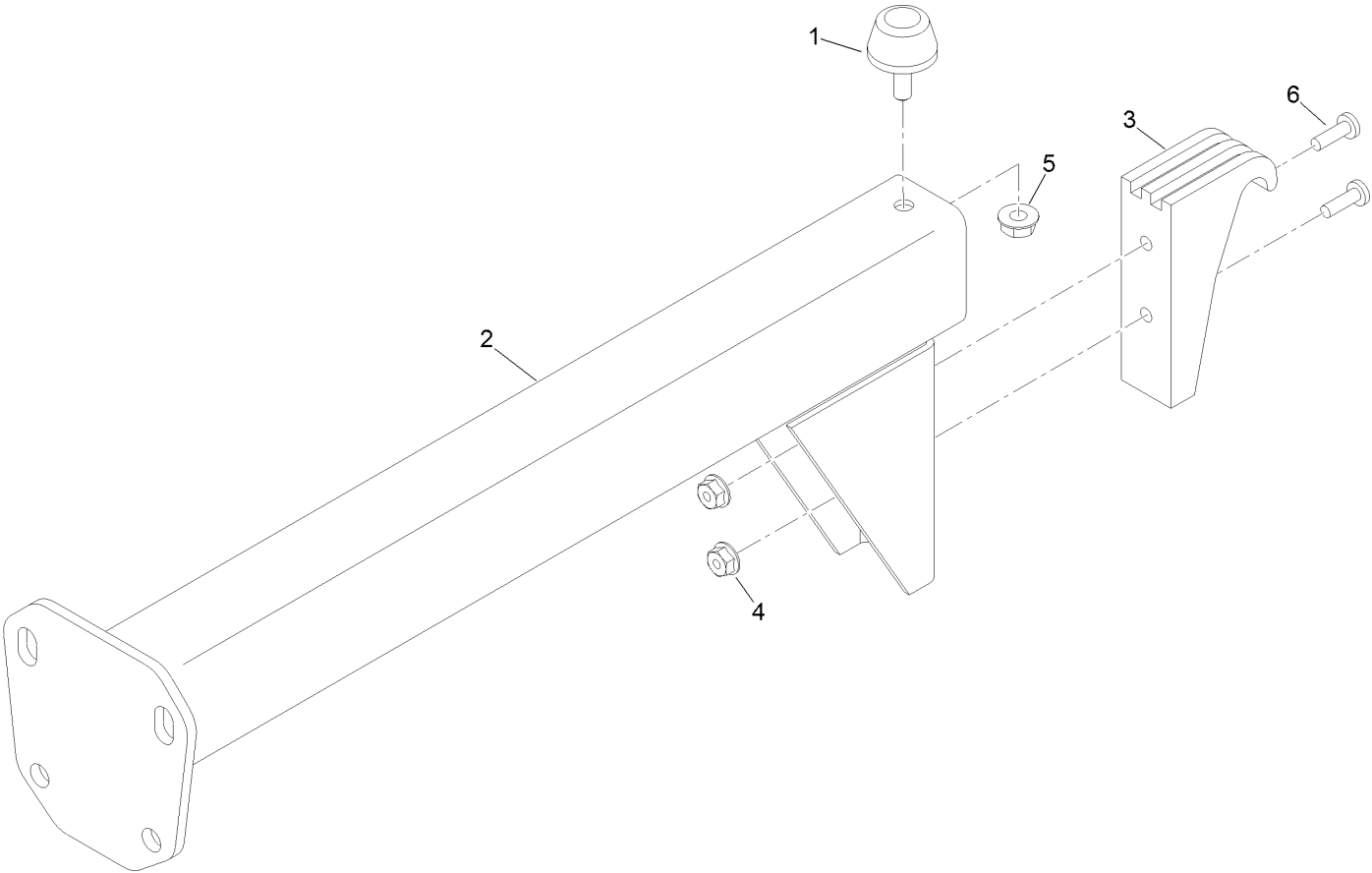
# Twin Bag Hood Assembly No. 126-8579



## Twin Bag Hood Assembly No. 126-8579 (continued)

<i>Ref.</i>	<i>Part Number</i>	<i>Qty.</i>	<i>Description</i>	<i>Ref.</i>	<i>Part Number</i>	<i>Qty.</i>	<i>Description</i>
1	1-513658	2	Bumper	14	112-2316	1	Hood ASM
2	1-633545	2	Spacer	15	321-11	1	Screw-HH
3	1-652395-03	2	Hinge ASM	16	321-4	6	Screw-HH
4	1-653036	2	Washer	17	321-6	2	Screw-HH
5	1-653403	1	Latch	18	3250-27	4	Screw-PPH
6	1-653425	1	Seal	19	3256-2	2	Washer-Flat
7	1-653528-03	1	Plate-Backing	20	3256-61	4	Washer-Flat
8	1-653544	2	Spring-Extension	21	3274-55	4	Screw-HSBH
9	1-653561	1	Seal-Chute	22	3296-2	10	Nut-Lock, NI
10	1-653598-03	1	Clamp-Seal	23	3296-42	3	Nut-Lock, NI
11	1-803075	6	Screw-Head, Truss	24	32128-33	6	Nut-HF
12	103-5166	1	Bag Support ASM	25	114439	7	Rivet-Blind
13	109-8705-03	1	Frame-Bag, Twin				

# Bag Support Frame Assembly No. 103-5166

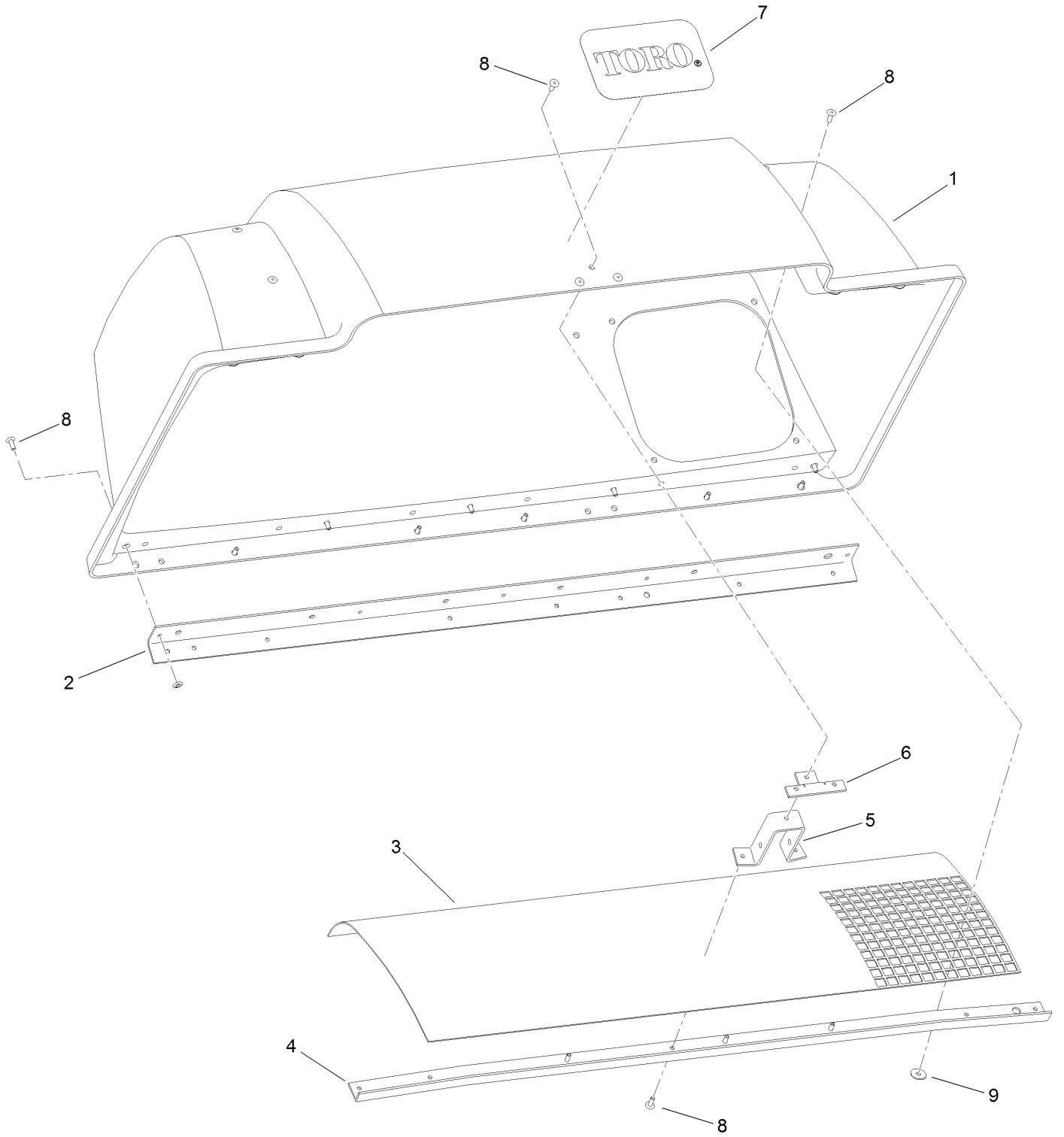




# Bag Support Frame Assembly No. 103-5166 (continued)

<i>Ref.</i>	<i>Part Number</i>	<i>Qty.</i>	<i>Description</i>	<i>Ref.</i>	<i>Part Number</i>	<i>Qty.</i>	<i>Description</i>
1	1-523420	1	Bumper	4	3290-148	2	Nut-Whizlock
2	103-5124-03	1	Support-Bag	5	32128-33	1	Nut-Whizlock
3	1-653404	1	Catch	6	3290-500	2	Screw-PPH

# Hood Assembly No. 112-2316

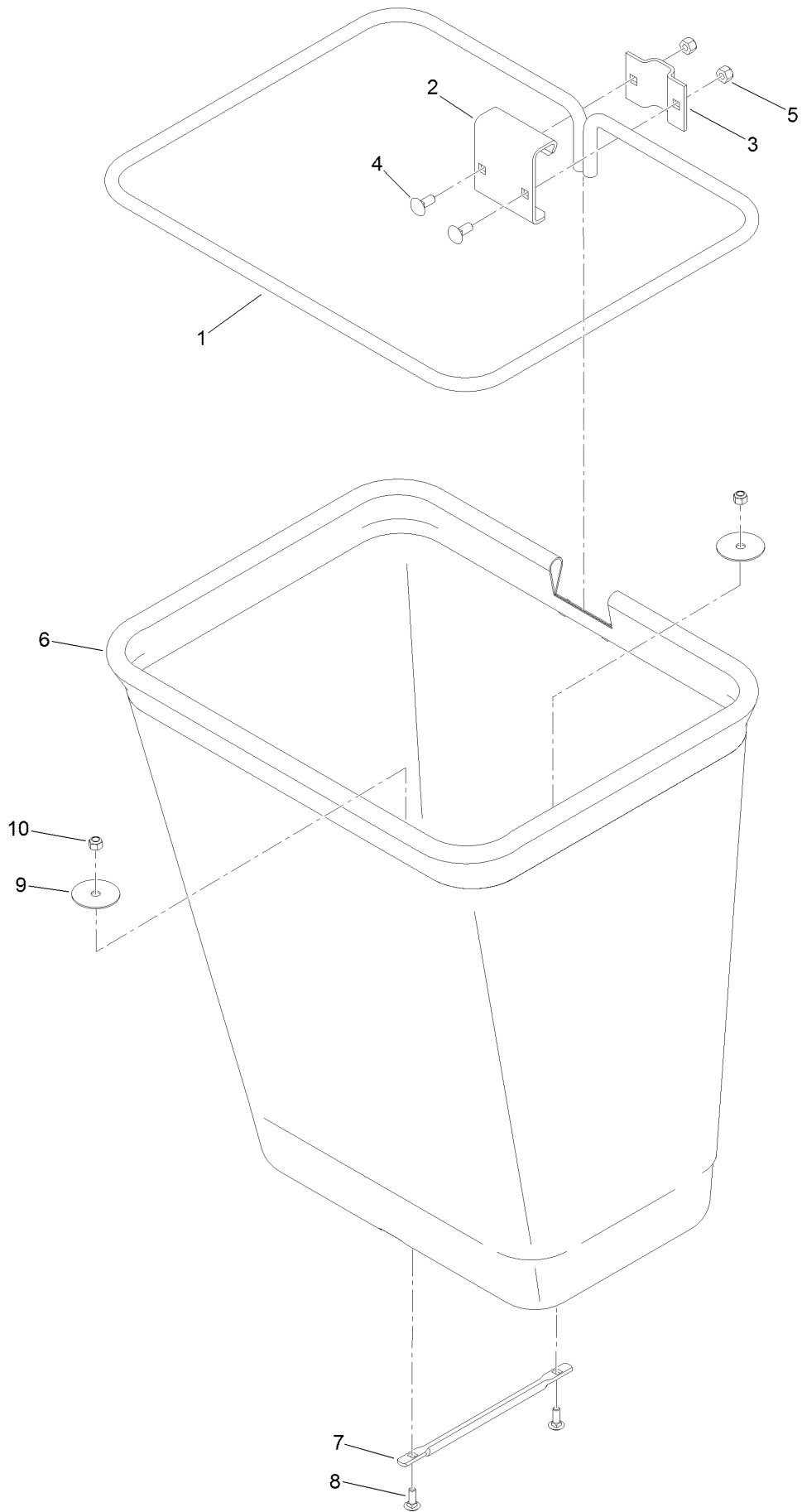


## Hood Assembly No. 112-2316 (continued)

<i>Ref.</i>	<i>Part Number</i>	<i>Qty.</i>	<i>Description</i>
1	107-4088	1	Top-Bagger
2	1-653397-03	1	Stiffener-Bagger, Top
3	114967	1	Screen-Bagger
4	1-653400-03	1	Support-Screen
5	1-653519	1	Anchor-Latch

<i>Ref.</i>	<i>Part Number</i>	<i>Qty.</i>	<i>Description</i>
6	1-653535	1	Reinforcement-Latch
7	99-4693	1	Decal
8	114439	38	Rivet-Blind
9	3256-61	14	Washer-Flat

# Bag Assembly No. 116-0754



## Bag Assembly No. 116-0754 (continued)

<i>Ref.</i>	<i>Part Number</i>	<i>Qty.</i>	<i>Description</i>	<i>Ref.</i>	<i>Part Number</i>	<i>Qty.</i>	<i>Description</i>
1	1-653529-03	1	Frame-Bag	6	116-0757	1	Bag
2	114973-03	1	Hanger-Bag	7	1-653566	1	Handle-Bag
3	114974-03	1	Clamp	8	3229-1	2	Screw-CARR
4	3230-1	2	Bolt-CARR	9	1-653036	2	Washer
5	3296-29	2	Nut-Lock, NI	10	3296-42	2	Nut-Lock, NI

**Notes:**

**Notes:**



**Count on it.**