



Fuel Pump Replacement Kit

Diesel-Powered Traction Unit

Model No. 144-4020

Installation Instructions

This kit is for multiple machines. Use the loose parts table to find your machine and the procedure number. Confirm the model number for the machine in the procedure.

Safety

- Use extreme care in handling fuel. It is flammable and its vapors are explosive.
- Extinguish all cigarettes, cigars, pipes, and other sources of ignition.
- Use only an approved fuel container.
- Do not remove the fuel cap or fill the fuel tank while the engine is running or hot.
- Do not add or drain fuel in an enclosed space.
- Do not store the machine or fuel container where there is an open flame, spark, or pilot light, such as on a water heater or other appliance.
- If you spill fuel, do not attempt to start the engine; avoid creating any source of ignition until the fuel vapors have dissipated.

Installation

Loose Parts

Use the chart below to verify that all parts have been shipped.

Procedure	Description	Qty.	Use
1	No parts required	–	Prepare the machine.
2	Fuel pump Fuel filter Hose clamp Hose	1 1 4 1	Install the fuel pump on a Groundsmaster 360 machine.
3	Fuel pump Fuel filter Hose clamp Bolt (1/4 x 5/8 inch) Nylon locknut (1/4 inch) Hose	1 1 4 2 2 1	Install the fuel pump on a Groundsmaster 3280 machine.
4	Fuel pump Fuel filter Hose clamp Self-tapping screw (1/4 x 1/2 inch) Hose	1 1 4 1 1	Install the fuel pump on a Groundsmaster 7200 or 7210 machine.
5	Fuel pump Hose clamp Carriage bolt (1/4 x 3/4 inch) Nylon locknut (1/4 inch) Hose	1 4 2 2 1	Install the fuel pump on a Groundsmaster 4000 series machine.



Procedure	Description	Qty.	Use
6	Fuel pump	1	Install the fuel pump on a Groundsmaster 3500 series machine and a Reelmaster 3100 or 3500 series machine.
	Fuel filter	1	
	Hose clamp	4	
	Self-tapping screw (1/4 x 1/2 inch)	2	
	Fuel-pump plate	1	
	Hose	1	
7	Fuel pump	1	Install the fuel pump on a Groundsmaster 4500 or 4700 machine and Reelmaster 7000 machine.
	Fuel filter	1	
	Hose clamp	4	
	Hose	1	
8	Fuel pump	1	Install the fuel pump on a Groundsmaster 4300 machine or a Reelmaster 5000 series machine.
	Fuel filter	1	
	Hose clamp	4	
	Self-tapping screw (1/4 x 1/2 inch)	2	
	Hose	1	
9	Fuel pump	1	Install the fuel pump on a Reelmaster 6700 machine.
	Fuel filter	1	
	Hose clamp	4	
	Bolt (1/4 x 5/8 inch)	2	
	Nylon locknut (1/4 inch)	2	
	Hose	1	
10	Fuel pump	1	Install the fuel pump on a Multi Pro 5800 machine.
	Fuel filter	1	
	Hose clamp	4	
	Spacer	1	
	Hose	1	
11	Fuel pump	1	Install the fuel pump on a MDX-D machine.
	Fuel filter	1	
	Hose clamp	4	
	Bolt (1/4 x 5/8 inch)	2	
	Nylon locknut (1/4 inch)	2	
	Hose	1	
12	Fuel-pump bracket	1	Install the fuel pump on a HDX-D machine.
	Fuel pump	1	
	Fuel filter	1	
	Hose clamp	4	
	Bolt (1/4 x 5/8 inch)	2	
	Nylon locknut (1/4 inch)	2	
	Bolt (M8 x 20 mm)	1	
	Hose	1	
13	Fuel-pump bracket	1	Install the fuel pump on a Z Master machine.
	Fuel pump	1	
	Fuel filter	1	
	Hose clamp	4	
	Bolt (1/4 x 5/8 inch)	2	
	Nylon locknut (1/4 inch)	2	
	Hose	1	

Procedure	Description	Qty.	Use
14	Fuel-pump bracket	1	Install the fuel pump on a Greensmaster GR3250 machine.
	Fuel pump	1	
	Fuel filter	1	
	Hose clamp	4	
	Bolt (1/4 x 5/8 inch)	1	
	Nylon locknut (1/4 inch)	1	
	Hose	1	
15	Fuel-pump plate	1	Install the fuel pump on a Greensmaster GR3400 and GR3420 machine.
	Fuel pump	1	
	Fuel filter	1	
	Hose clamp	4	
	Bolt (1/4 x 5/8 inch)	2	
	Nylon locknut (1/4 inch)	2	
	Hose	1	
16	Fuel pump	1	Install the fuel pump on a Dingo TX 1000 machine.
	Fuel filter	1	
	Hose clamp	4	
	Bolt (1/4 x 5/8 inch)	2	
	Nylon locknut (1/4 inch)	2	
	Hose	1	
17	Fuel-pump plate	1	Install the fuel pump on a Dingo TX 525 machine.
	Fuel pump	1	
	Fuel filter	1	
	Hose clamp	4	
	Bolt (3/8 x 1 inch)	2	
	Nylon locknut (3/8 inch)	2	
	Self-tapping screw (1/4 x 1/2 inch)	1	
	Hose	1	

Note: When installing the pump on any machine, inspect the fuel hose and replace it as needed.

1

Preparing the Machine

No Parts Required

Procedure

1. Park the machine on a level surface.
2. Engage the parking brake.
3. Shut off the engine.
4. Lower the attachment(s).
5. Allow the machine to cool before installing this kit.
6. Disconnect the negative (-) battery cable before making any repairs.

2

Installing the Fuel Pump on a Groundsmaster® 360 Machine

Parts needed for this procedure:

1	Fuel pump
1	Fuel filter
4	Hose clamp
1	Hose

Procedure

This procedure is for machines with the following model numbers.

Machine	Model Number
Groundsmaster 360 2WD	31230
Groundsmaster 360 4WD	31223
Groundsmaster 360 4WD	31236

Use [Figure 1](#) and [Figure 2](#) for this procedure.

Note: Install the fuel filter with the arrow pointing towards the fuel pump.

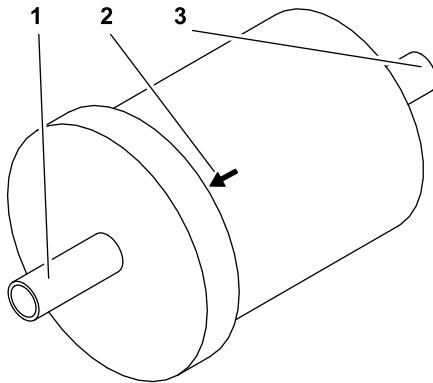


Figure 1

g368968

1. Outlet towards the fuel pump
2. Arrow points towards the fuel pump
3. Inlet

1. Before removing the existing pump, clamp the fuel hose on both sides of the pump. This will prevent fuel leaking when replacing the pump.
2. Remove the existing fuel hoses from the fuel pump.

3. Remove the existing fuel pump from the machine and retain the hardware.
4. Install the new fuel pump using the top hole in the frame tube, the top hole in the pump, and the existing hardware.
5. Install a hose clamp onto the existing fuel hose from the water separator and install it onto the new fuel pump. Secure it with the hose clamp.
6. Measure and cut a hose length to connect the fuel pump and fuel filter.
7. Install 2 hose clamps onto the hose.
8. Install the hose to the fuel pump and fuel filter and secure it with the 2 hose clamps.
9. Install a hose clamp onto the existing fuel hose from the tank and install the fuel hose onto the new filter. Secure it with the hose clamp.
10. Plug the fuel-pump connector into the harness.

3

Installing the Fuel Pump on a Groundsmaster 3280 Machine

Parts needed for this procedure:

1	Fuel pump
1	Fuel filter
4	Hose clamp
2	Bolt (1/4 x 5/8 inch)
2	Nylon locknut (1/4 inch)
1	Hose

Procedure

This procedure is for machines with the following model numbers.

Machine	Model Number
Groundsmaster 3280	30344
Groundsmaster 3280	30345

Use [Figure 1](#) and [Figure 3](#) for this procedure.

Note: Install the fuel filter with the arrow pointing towards the fuel pump.

1. Before removing the existing pump, clamp the fuel hose on both sides of the pump. This will prevent fuel leaking when replacing the pump.
2. Remove the existing fuel hoses from the fuel pump.
3. Remove the existing fuel pump from the machine and discard the hardware.
4. Install the new fuel pump to the machine frame with 2 bolts (1/4 x 5/8 inch) and 2 locknuts (1/4 inch).
5. Install a hose clamp onto the existing fuel hose from the water separator and install it onto the new fuel pump. Secure it with the hose clamp.
6. Measure and cut a hose length to connect the fuel pump and fuel filter.
7. Install 2 hose clamps onto the hose.
8. Install the hose to the fuel pump and fuel filter and secure it with the 2 hose clamps.
9. Install a hose clamp onto the existing fuel hose from the tank and install the fuel hose onto the new filter. Secure it with the hose clamp.

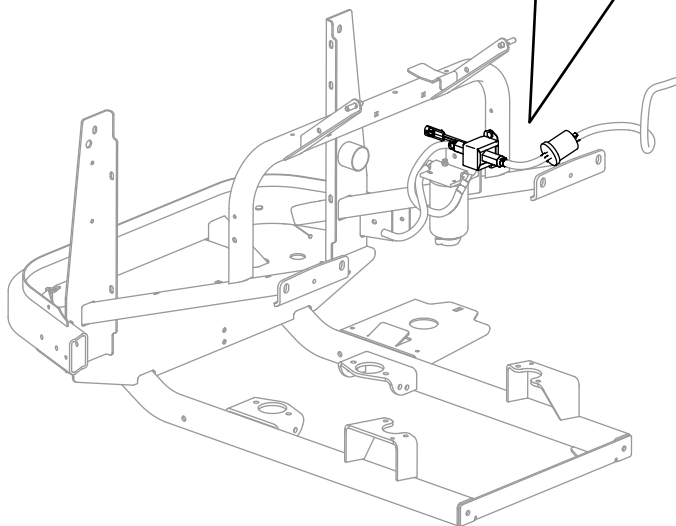
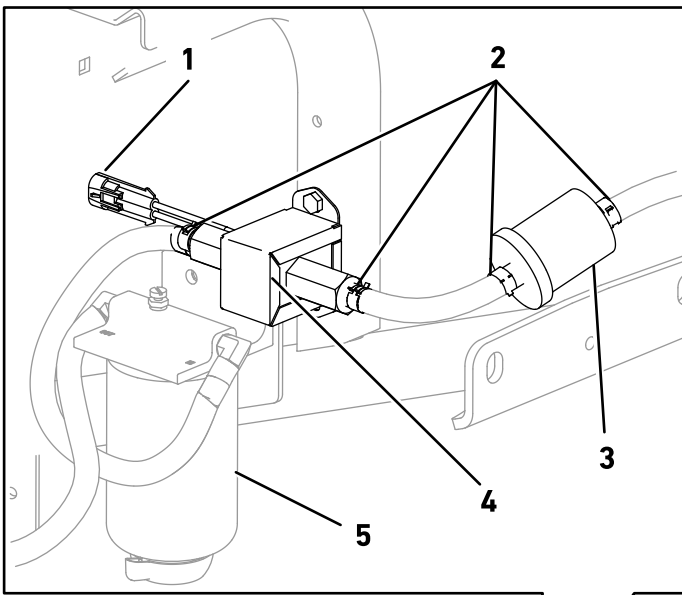


Figure 2

g368644

- | | |
|------------------------|--------------------|
| 1. Fuel-pump connector | 4. Fuel pump |
| 2. Hose clamps | 5. Water separator |
| 3. Fuel filter | |

10. Plug the fuel-pump connector into the harness.

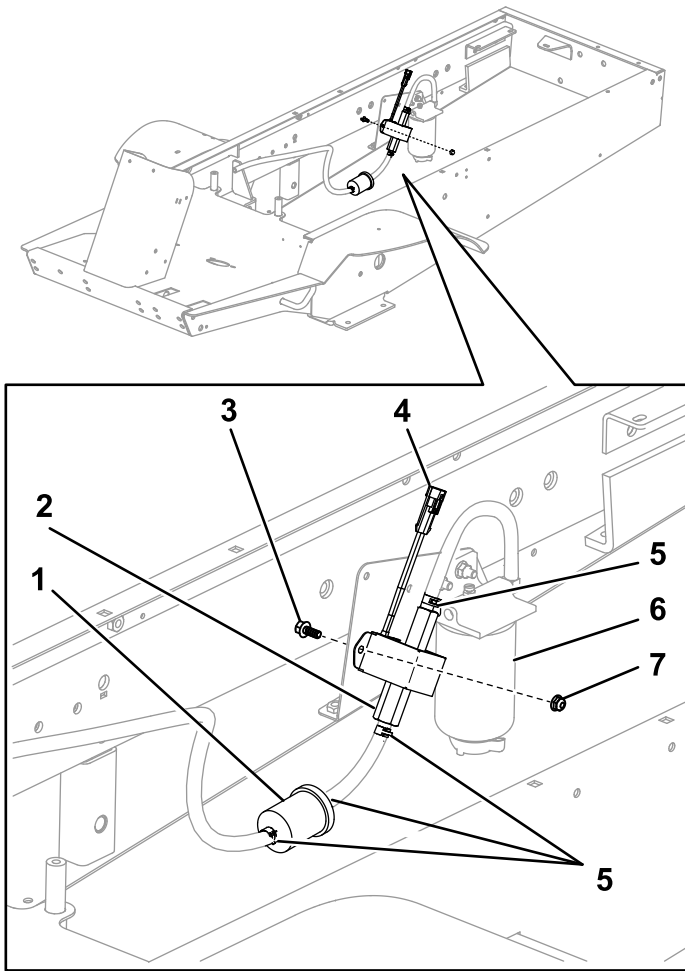


Figure 3

g368642

- | | |
|--------------------------|-----------------------|
| 1. Fuel filter | 5. Hose clamp |
| 2. Fuel pump | 6. Water separator |
| 3. Bolt (1/4 x 5/8 inch) | 7. Locknut (1/4 inch) |
| 4. Fuel-pump connector | |

4

Installing the Fuel Pump on a Groundsmaster 7200 or 7210 Machine

Parts needed for this procedure:

1	Fuel pump
1	Fuel filter
4	Hose clamp
1	Self-tapping screw (1/4 x 1/2 inch)
1	Hose

Procedure

This procedure is for machines with the following model numbers.

Machine	Model Number
Groundsmaster 7200	30495
Groundsmaster 7200	30495TC
Groundsmaster 7210	30487TC

Use [Figure 1](#) and [Figure 4](#) for this procedure.

Note: Install the fuel filter with the arrow pointing towards the fuel pump.

- Before removing the existing pump, clamp the fuel hose on both sides of the pump. This will prevent fuel leaking when replacing the pump.
- Remove the existing fuel hoses from the fuel pump.
- Remove the existing fuel pump from the machine and retain the hardware.
- Install the new fuel pump using the bottom hole in the pump, existing hole in the frame, and the self-tapping screw (1/4 x 1/2 inch).
- Install a hose clamp onto the existing fuel hose from the water separator and install it onto the new fuel pump. Secure it with the hose clamp.
- Measure and cut a hose length to connect the fuel pump and fuel filter.
- Install 2 hose clamps onto the hose.
- Install the hose to the fuel pump and fuel filter and secure it with the 2 hose clamps.
- Install a hose clamp onto the existing fuel hose from the tank and install the fuel hose onto the new filter. Secure it with the hose clamp.

10. Plug the fuel-pump connector into the harness.

5

Installing the Fuel Pump on a Groundsmaster 4000 Series Machine

Parts needed for this procedure:

1	Fuel pump
4	Hose clamp
2	Carriage bolt (1/4 x 3/4 inch)
2	Nylon locknut (1/4 inch)
1	Hose

Procedure

This procedure is for machines with the following model numbers.

Machine	Model Number
Groundsmaster 4100	30604
Groundsmaster 4000	30605
Groundsmaster 4010	30635
Groundsmaster 4110	30643

Use [Figure 5](#) for this procedure.

Note: Do not install the filter for this machine.

1. Clamp the fuel hose connected to the fuel pump and filter. This will prevent fuel leaking when replacing the pump.
2. Remove the existing fuel hoses from the fuel pump.
3. Remove the existing fuel pump from the machine and discard the hardware.
4. Install the new fuel pump using the 2 carriage bolts (1/4 x 3/4 inch) and the locknuts (1/4 inch).
5. Install a hose clamp onto the existing fuel hose from the water separator and install it onto the new fuel pump. Secure it with the hose clamp.
6. Install a hose clamp onto the existing fuel hose going to the engine and install it onto the new fuel pump. Secure it with the hose clamp.
7. Plug the fuel-pump connector into the harness.

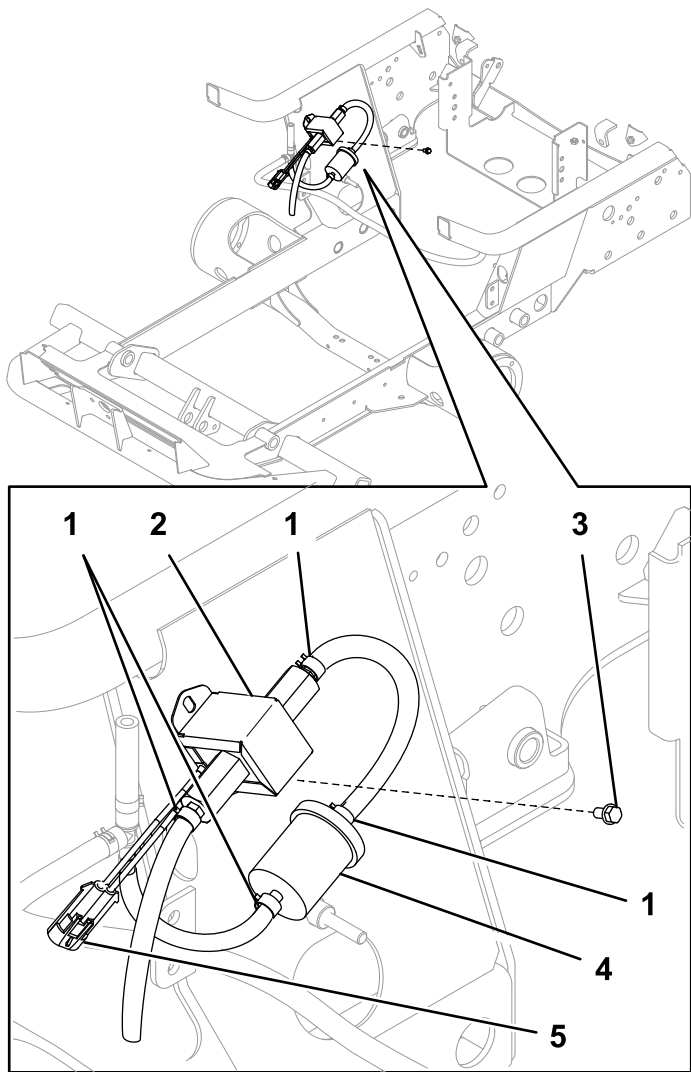


Figure 4

g368647

- | | |
|--|------------------------|
| 1. Hose clamp | 4. Fuel filter |
| 2. Fuel pump | 5. Fuel-pump connector |
| 3. Self-tapping screw (1/4 x 1/2 inch) | |

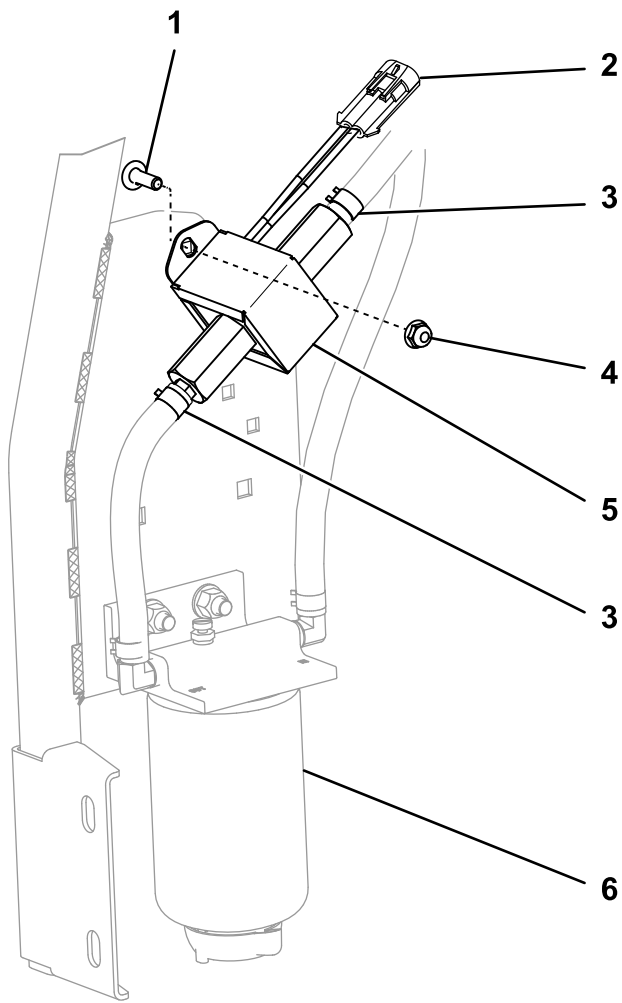


Figure 5

g368645

- | | |
|-----------------------------------|-----------------------|
| 1. Carriage bolt (1/4 x 3/4 inch) | 4. Locknut (1/4 inch) |
| 2. Fuel-pump connector | 5. Fuel pump |
| 3. Hose clamp | 6. Water separator |

6

Installing the Fuel Pump on a Groundsmaster® 3500 Series Machine and a Reelmaster® 3100 or 3500 Series Machine

Parts needed for this procedure:

1	Fuel pump
1	Fuel filter
4	Hose clamp
2	Self-tapping screw (1/4 x 1/2 inch)
1	Fuel-pump plate
1	Hose

Procedure

This procedure is for machines with the following model numbers.

Machine	Model Number
Groundsmaster 3500-D	30807
Groundsmaster 3500-D	30839
Groundsmaster 3500-D	30849
Reelmaster 3100	03170
Reelmaster 3100	03171
Reelmaster 3105	03174
Reelmaster 3550	03910
Reelmaster 3555	03820
Reelmaster 3575	03821

Use [Figure 1](#) and [Figure 6](#) for this procedure.

Note: Install the fuel filter with the arrow pointing towards the fuel pump.

1. Before removing the existing pump, clamp the fuel hose on both sides of the pump. This will prevent fuel leaking when replacing the pump.
2. Remove the existing hoses from the fuel pump.
3. Remove the existing fuel pump from the machine and retain the hardware.
4. Install the new fuel pump to the fuel-pump plate with the 2 self-tapping screws (1/4 x 1/2 inch).

7

Installing the Fuel Pump on a Groundsmaster® 4500 or 4700 Machine and Reelmaster® 7000 Machine

Parts needed for this procedure:

1	Fuel pump
1	Fuel filter
4	Hose clamp
1	Hose

Procedure

This procedure is for machines with the following model numbers and TE model numbers.

Machine	Model Number
Groundsmaster 4500	30873(TE)
Groundsmaster 4700	30874(TE)
Groundsmaster 4500	30893(TE)
Groundsmaster 4700	30899(TE)
Reelmaster 7000	03781(TE)

Use [Figure 1](#) and [Figure 7](#) for this procedure.

Note: Install the fuel filter with the arrow pointing towards the fuel pump.

- Before removing the existing pump, clamp the fuel hose on both sides of the pump. This will prevent fuel leaking when replacing the pump.
- Remove the existing hoses from the fuel pump.
- Remove the existing fuel pump from the machine and retain the hardware.
- For Groundsmaster 4500 and 4700 machines, install the new fuel pump using the top hole in the pump and secure it to the frame tube with an existing fastener.
- For Reelmaster 7000 machines, install the new fuel pump using the both holes in the pump and secure it to the frame tube with the existing fasteners.
- Install a hose clamp onto the fuel hose connected to the water separator and install it onto the new fuel pump. Secure the hose with the clamp.

- Install the new fuel pump and plate with the existing hardware to the engine block.
- Install a hose clamp onto the fuel hose connected to the water separator and install it onto the new fuel pump. Secure the hose with the clamp.
- Measure and cut a hose length to connect the fuel pump and fuel filter.
- Install 2 hose clamps onto the hose.
- Install the hose to the fuel pump and fuel filter and secure it with the 2 hose clamps.
- Install a hose clamp onto the existing fuel hose from the tank and install the fuel hose onto the new filter. Secure the hose with the clamp.
- Plug the fuel-pump connector into the harness.

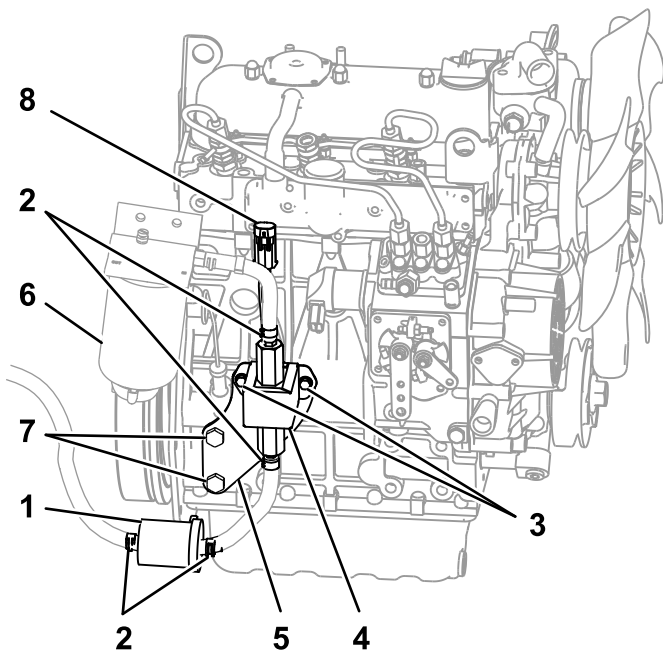


Figure 6

g368643

- | | |
|--|------------------------|
| 1. Fuel filter | 5. Fuel-pump plate |
| 2. Hose clamp | 6. Water separator |
| 3. Self-tapping screw (1/4 x 1/2 inch) | 7. Existing bolts |
| 4. Fuel pump | 8. Fuel-pump connector |

7. Measure and cut a hose length to connect the fuel pump and fuel filter.
8. Install 2 hose clamps onto the hose.
9. Install the hose to the fuel pump and fuel filter and secure it with the 2 hose clamps.
10. Install a hose clamp onto the existing fuel hose from the tank and install the fuel hose onto the new filter. Secure the hose with the clamp.
11. Plug the fuel-pump connector into the harness.

8

Installing the Fuel Pump on a Groundsmaster 4300 Machine or a Reelmaster 5000 Series Machine

Parts needed for this procedure:

1	Fuel pump
1	Fuel filter
4	Hose clamp
2	Self-tapping screw (1/4 x 1/2 inch)
1	Hose

Procedure

This procedure is for machines with the following model numbers and TE model numbers.

Machine	Model Number
Groundsmaster 4300	30853
Reelmaster 5010-H	03674
Reelmaster 5410	03675
Reelmaster 5510	03676(TE)
Reelmaster 5610 4WD	03678(TE)

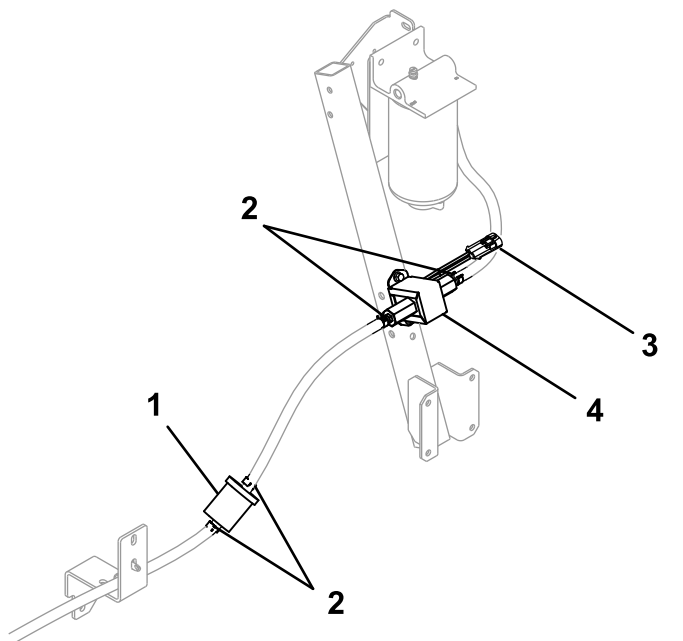


Figure 7

g368646

- | | |
|----------------|------------------------|
| 1. Fuel filter | 3. Fuel-pump connector |
| 2. Hose clamp | 4. Fuel pump |

Use [Figure 1](#) and [Figure 8](#) for this procedure.

Note: Install the fuel filter with the arrow pointing towards the fuel pump.

1. Before removing the existing pump, clamp the fuel hose on both sides of the pump. This will prevent fuel leaking when replacing the pump.
2. Remove the existing hoses from the fuel pump.
3. Remove the existing fuel pump from the machine and discard the hardware.
4. Install the new fuel pump to the frame using the existing hole with the 2 self-tapping screws (1/4 x 1/2 inch).
5. Install a hose clamp onto the fuel hose connected to the engine and install it onto the new fuel pump. Secure the hose with the clamp.
6. Measure and cut a hose length to connect the fuel pump and fuel filter.
7. Install 2 hose clamps onto the hose.

8. Install the hose to the fuel pump and fuel filter and secure it with the 2 hose clamps.
9. Install a hose clamp onto the existing fuel hose from the tank and install the fuel hose onto the new filter. Secure the hose with the clamp.
10. Plug the fuel-pump connector into the harness.

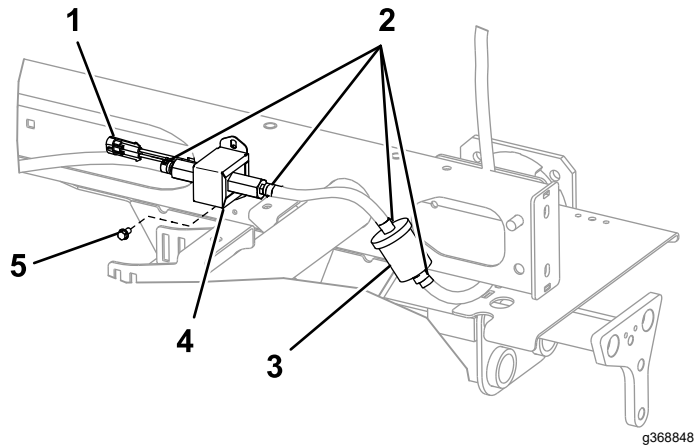


Figure 8

- | | |
|------------------------|--|
| 1. Fuel-pump connector | 4. Fuel pump |
| 2. Hose clamp | 5. Self-tapping screw (1/4 x 1/2 inch) |
| 3. Fuel filter | |

9

Installing the Fuel Pump on a Reelmaster 6700 Machine

Parts needed for this procedure:

1	Fuel pump
1	Fuel filter
4	Hose clamp
2	Bolt (1/4 x 5/8 inch)
2	Nylon locknut (1/4 inch)
1	Hose

Procedure

This procedure is for machines with the following model numbers.

Machine	Model Number
Reelmaster 6700	03813

Use [Figure 1](#) and [Figure 9](#) for this procedure.

Note: Install the fuel filter with the arrow pointing towards the fuel pump.

1. Before removing the existing pump, clamp the fuel hose on both sides of the pump. This will prevent fuel leaking when replacing the pump.
2. Remove the existing fuel hoses from the fuel pump.
3. Remove the existing fuel pump from the machine and retain the hardware.
4. Install the new fuel pump using the existing slot in the plate with 2 bolts (1/4 x 5/8 inch) and 2 locknuts (1/4 inch).
5. Install a hose clamp onto the existing fuel hose connected to the engine and install it onto the new fuel pump. Secure the hose with the clamp.
6. Install a hose clamp onto the fuel hose connected to the water separator and install it onto the new fuel pump.
7. Measure and cut a hose length to connect the fuel pump and fuel filter.
8. Install 2 hose clamps onto the hose.
9. Install the hose to the fuel pump and fuel filter and secure it with the 2 hose clamps.

10. Install a hose clamp onto the existing fuel hose from the tank and install the fuel hose onto the new filter. Secure the hose with the clamp.
11. Plug the fuel-pump connector into the harness.

10

Installing the Fuel Pump on a Multi Pro® 5800 Machine

Parts needed for this procedure:

1	Fuel pump
1	Fuel filter
4	Hose clamp
1	Spacer
1	Hose

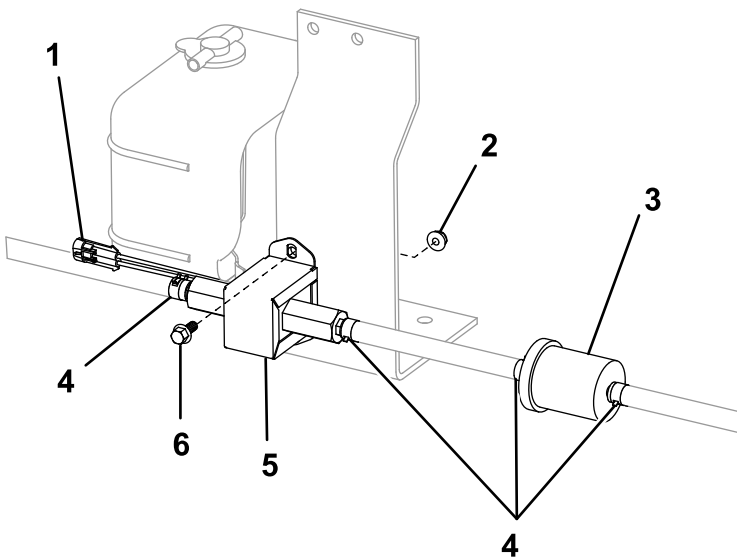


Figure 9

g368859

- | | |
|------------------------|--------------------------|
| 1. Fuel-pump connector | 4. Hose clamp |
| 2. Locknut (1/4 inch) | 5. Fuel pump |
| 3. Fuel filter | 6. Bolt (1/4 x 5/8 inch) |

Procedure

This procedure is for machines with the following model numbers.

Machine	Model Number
Multi Pro 5800	41393

Use [Figure 1](#) and [Figure 10](#) for this procedure.

Note: Install the fuel filter with the arrow pointing towards the fuel pump.

1. Before removing the existing pump, clamp the fuel hose on both sides of the pump. This will prevent fuel leaking when replacing the pump.
2. Remove the existing fuel hoses from the fuel pump.
3. Remove the existing fuel pump from the machine and retain the hardware.
4. Install the new fuel pump using the top hole, the existing slot in the frame plate, and the existing hardware with the new spacer.
5. Install a hose clamp onto the existing fuel hose from the water separator and install it onto the new fuel pump. Secure it with the hose clamp.
6. Measure and cut a hose length to connect the fuel pump and fuel filter.
7. Install 2 hose clamps onto the hose.
8. Install the hose to the fuel pump and fuel filter and secure it with the 2 hose clamps.
9. Install a hose clamp onto the existing fuel hose from the tank and install the fuel hose onto the new filter. Secure it with the hose clamp.
10. Plug the fuel-pump connector into the harness.

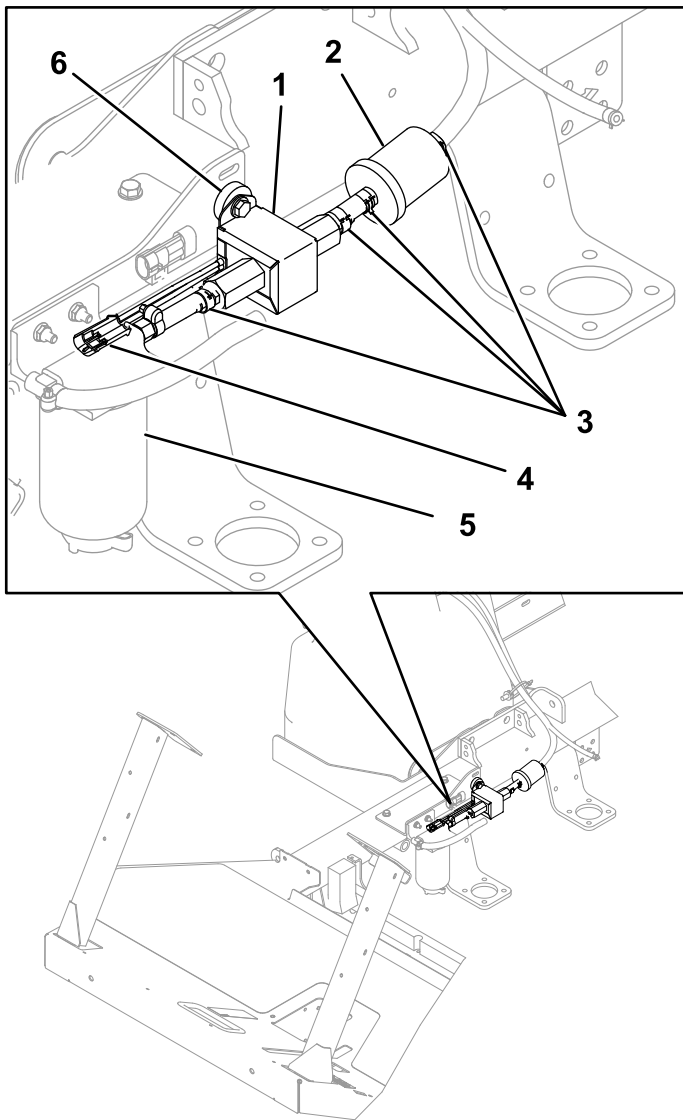


Figure 10

g368860

- | | |
|----------------|------------------------|
| 1. Fuel pump | 4. Fuel-pump connector |
| 2. Fuel filter | 5. Water separator |
| 3. Hose clamp | 6. Spacer |

11

Installing the Fuel Pump on a Workman® MDX-D Machine

Parts needed for this procedure:

1	Fuel pump
1	Fuel filter
4	Hose clamp
2	Bolt (1/4 x 5/8 inch)
2	Nylon locknut (1/4 inch)
1	Hose

Procedure

This procedure is for machines with the following model numbers.

Machine	Model Number
MDX-D	07236
MDX-D	07236TC

Use [Figure 1](#), [Figure 11](#), and [Figure 12](#) for this procedure.

Note: Install the fuel filter with the arrow pointing towards the fuel pump.

- To gain access to the fuel pump, remove the seat base, remove the tank strap, and slide the tank to gain access to the pump.
- Before removing the existing pump, clamp the fuel hose on both sides of the pump. This will prevent fuel leaking when replacing the pump.
- Remove the existing fuel hoses from the fuel pump.
- Remove the existing fuel pump and mounting foam from the machine and discard the hardware.
- Locate, mark, and drill 2 holes (9/32 inch) into the rear plates on the frame as shown in [Figure 11](#).

⚠ WARNING

Using a drill without proper eye protection may allow debris to enter the eye, causing injury.

When drilling, always wear eye protection.

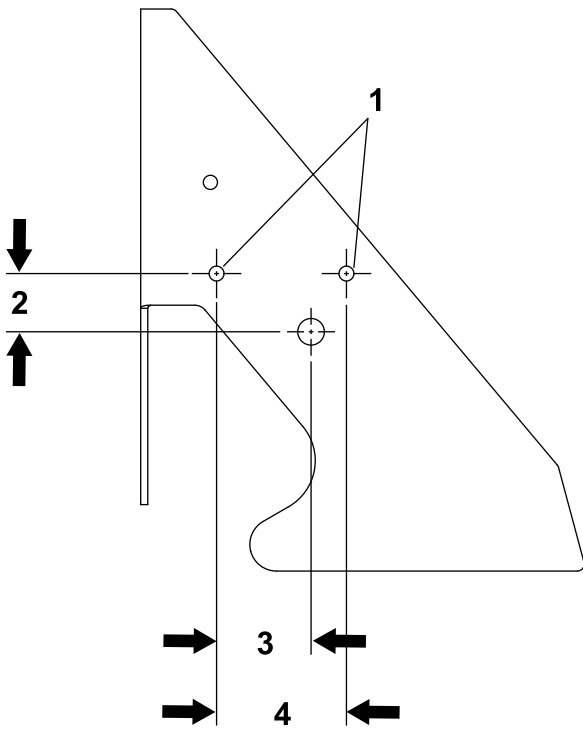


Figure 11

g368817

- | | |
|---------------------------|---------------------------|
| 1. 9/32 inch hole | 3. 44.5 mm (1-3/4 inches) |
| 2. 28.6 mm (1-1/8 inches) | 4. 63.5 mm (2-1/2 inches) |

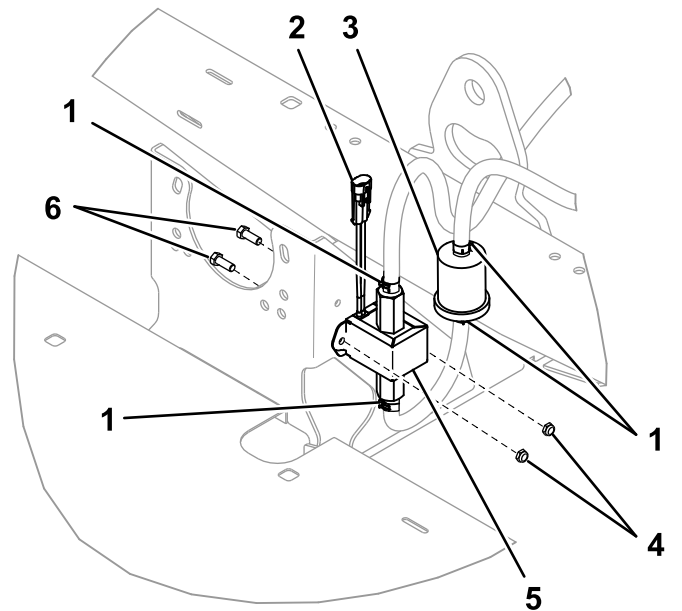


Figure 12

g368861

- | | |
|------------------------|--------------------------|
| 1. Hose clamp | 4. Locknut (1/4 inch) |
| 2. Fuel-pump connector | 5. Fuel pump |
| 3. Fuel filter | 6. Bolt (1/4 x 5/8 inch) |

- Using the new holes, install the new fuel pump with 2 bolts (1/4 x 5/8 inch) and 2 locknuts (1/4 inch).
- Install a hose clamp onto the existing fuel hose and install it onto the new fuel pump.
- Measure and cut a hose length to connect the fuel pump and fuel filter.
- Install 2 hose clamps onto the hose.
- Install the hose to the fuel pump and fuel filter and secure it with 2 hose clamps.
- Install a hose clamp onto the existing fuel hose from the tank and install the fuel hose onto the new filter. Secure the hose with the clamp.
- Plug the fuel-pump connector into the harness.

12

Installing the Fuel Pump on a Workman HDX-D Series Machine

Parts needed for this procedure:

1	Fuel-pump bracket
1	Fuel pump
1	Fuel filter
4	Hose clamp
2	Bolt (1/4 x 5/8 inch)
2	Nylon locknut (1/4 inch)
1	Bolt (M8 x 20 mm)
1	Hose

Procedure

This procedure is for machines with the following model numbers.

Machine	Model Number
HDX-D	07379
HDX-D	07385
HDX-D	07385TC
HDX-D 4WD	07387
HDX-D 4WD	07387TC

Use [Figure 1](#) and [Figure 13](#) for this procedure.

Note: Install the fuel filter with the arrow pointing towards the fuel pump.

1. Before removing the existing pump, clamp the fuel hose on both sides of the pump. This will prevent fuel leaking when replacing the pump.
2. Remove the existing fuel hoses from the fuel pump.
3. Remove the existing fuel pump and mounting bracket from the machine and retain the hardware.
4. Install the new fuel pump to the new fuel-pump bracket with 2 bolts (1/4 x 5/8 inch) and 2 locknuts (1/4 inch).
5. Install the pump and bracket to the engine with an existing bolt and a new bolt (M8 x 20 mm).

6. Install a hose clamp onto the existing fuel hose from the water separator and install it onto the new fuel pump. Secure it with the hose clamp.
7. Measure and cut a hose length to connect the fuel pump and fuel filter.
8. Install 2 hose clamps onto the hose.
9. Install the hose to the fuel pump and fuel filter and secure it with 2 hose clamps.
10. Install a hose clamp onto the existing fuel hose from the tank and install the fuel hose onto the new filter. Secure it with the hose clamp.
11. Plug the fuel-pump connector into the harness.

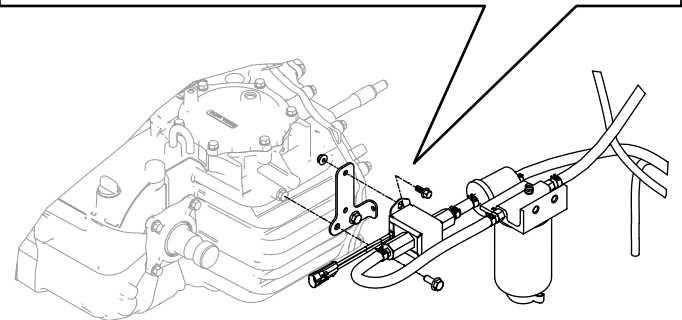
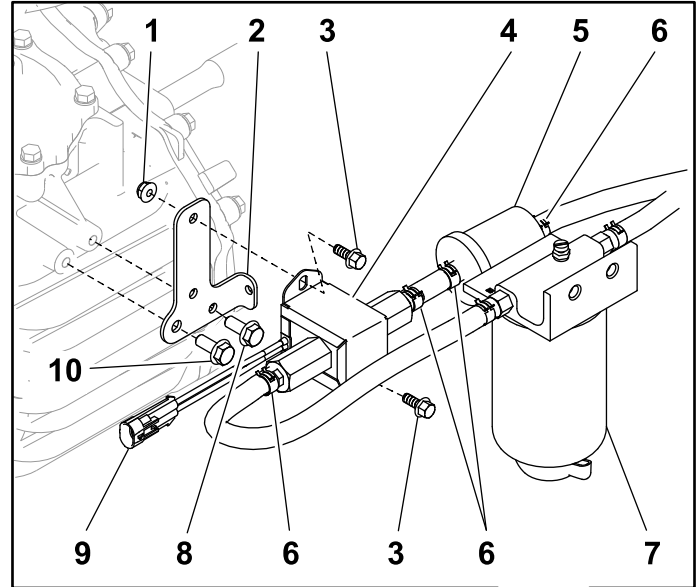


Figure 13

- | | |
|--------------------------|------------------------|
| 1. Locknut (1/4 inch) | 6. Hose clamp |
| 2. Fuel-pump bracket | 7. Water separator |
| 3. Bolt (1/4 x 5/8 inch) | 8. Existing bolt |
| 4. Fuel pump | 9. Fuel-pump connector |
| 5. Fuel filter | 10. Bolt (M8 x 20 mm) |

g368844

13

Installing the Fuel Pump on a Z Master Machine

Parts needed for this procedure:

1	Fuel-pump bracket
1	Fuel pump
1	Fuel filter
4	Hose clamp
2	Bolt (1/4 x 5/8 inch)
2	Nylon locknut (1/4 inch)
1	Hose

Procedure

This procedure is for machines with the following model numbers.

Machine	Model Number
Z Master 7000, 52 inch cutting unit	72266
Z Master 7000, 60 inch cutting unit	72267
Z Master 7000, 72 inch cutting unit	72274
Z Master 7000, 132 cm cutting unit	72264TE
Z Master 7000, 152 cm cutting unit	72265TE
Z Master 7000, 132 cm cutting unit	72279TE
Z Master 7000, 72 inch cutting unit	74274
Z Master Z595, 72 inch cutting unit	74274CP
Z Master 7000, 60 inch cutting unit	74267
Z Master 580D, 60 inch cutting unit	74267CP
Z Master 7000, 52 inch cutting unit	74266
Z Master 580D, 52 inch cutting unit	74266CP
Z Master 7000, 132 cm cutting unit	74279TE

Z Master 7000, 152 cm cutting unit	74265TE
Z Master 7000, 132 cm cutting unit	74264TE

Use [Figure 1](#), [Figure 14](#), [Figure 15](#), and [Figure 16](#) for this procedure.

Note: Install the fuel filter with the arrow pointing towards the fuel pump.

1. Before removing the existing pump, clamp the fuel hose on both sides of the pump. This will prevent fuel leaking when replacing the pump.
2. Remove the existing fuel hoses from the fuel pump.
3. Remove the existing fuel pump from the machine and discard the hardware.
4. For international machines only, locate, mark, and drill a hole (9/32 inch) into the guard as shown in [Figure 14](#) and [Figure 16](#).

⚠ WARNING

Using a drill without proper eye protection may allow debris to enter the eye, causing injury.

When drilling, always wear eye protection.

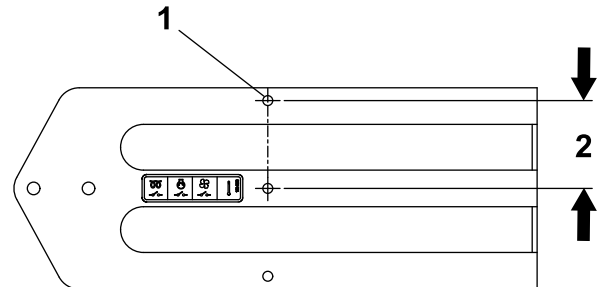


Figure 14

g368846

1. 9/32 inch hole
2. 63.5 mm (2-3/8 inches)

5. For domestic machines, install the new fuel pump using the bottom hole in the pump with a bolt (1/4 x 5/8 inch) and a locknut (1/4 inch); refer to [Figure 15](#). Only one nut and bolt is used for domestic machines.
6. For international machines, install the new fuel pump using both holes in the pump and secure it with 2 bolts (1/4 x 5/8 inch) and 2 locknuts (1/4 inch); refer to [Figure 16](#).
7. Install a hose clamp onto the existing fuel hose from the water separator and install it onto the new fuel pump. Secure it with the hose clamp.

8. Measure and cut a hose length to connect the fuel pump and fuel filter.
9. Install 2 hose clamps onto the hose.
10. Install the hose to the fuel pump and fuel filter and secure it with 2 hose clamps.
11. Install a hose clamp onto the existing fuel hose from the tank and install the fuel hose onto the new filter. Secure it with the hose clamp.
12. Plug the fuel-pump connector into the harness.

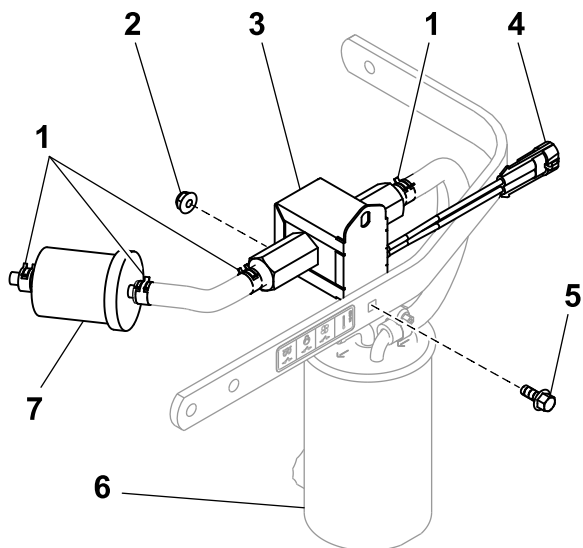


Figure 15
Domestic Machines

- | | |
|------------------------|--------------------------|
| 1. Hose clamp | 5. Bolt (1/4 x 5/8 inch) |
| 2. Locknut (1/4 inch) | 6. Water separator |
| 3. Fuel pump | 7. Fuel filter |
| 4. Fuel-pump connector | |

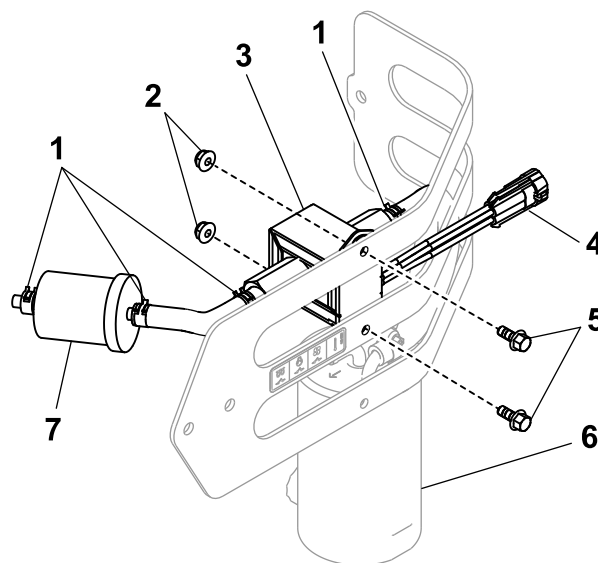


Figure 16
International Machines

- | | |
|------------------------|--------------------------|
| 1. Hose clamp | 5. Bolt (1/4 x 5/8 inch) |
| 2. Locknut (1/4 inch) | 6. Water separator |
| 3. Fuel pump | 7. Fuel filter |
| 4. Fuel-pump connector | |

14

Installing the Fuel Pump on a Greensmaster GR3250 Machine

Parts needed for this procedure:

1	Fuel-pump bracket
1	Fuel pump
1	Fuel filter
4	Hose clamp
1	Bolt (1/4 x 5/8 inch)
1	Nylon locknut (1/4 inch)
1	Hose

Procedure

This procedure is for machines with the following model numbers.

Machine	Model Number
Greensmaster GR3250	04384

Use [Figure 1](#) and [Figure 17](#) for this procedure.

Note: Install the fuel filter with the arrow pointing towards the fuel pump.

1. Before removing the existing pump, clamp the fuel hose on both sides of the pump. This will prevent fuel leaking when replacing the pump.
2. Remove the existing fuel hoses from the fuel pump.
3. Remove the existing fuel pump and discard the hardware.
4. Install the new fuel pump using the top hole of the pump and the bottom hole in the frame plate.
5. Secure the pump with a bolt (1/4 x 5/8 inch) and locknut (1/4 inch).
6. Install a hose clamp onto the existing fuel hose from the water separator and install it onto the new fuel pump. Secure it with the hose clamp.
7. Measure and cut a hose length to connect the fuel pump and fuel filter.
8. Install 2 hose clamps onto the hose.
9. Install the hose to the fuel pump and fuel filter and secure it with the 2 hose clamps.
10. Install a hose clamp onto the existing fuel hose from the tank and install the fuel hose onto the new filter. Secure it with the hose clamp.
11. Plug the fuel-pump connector into the harness.

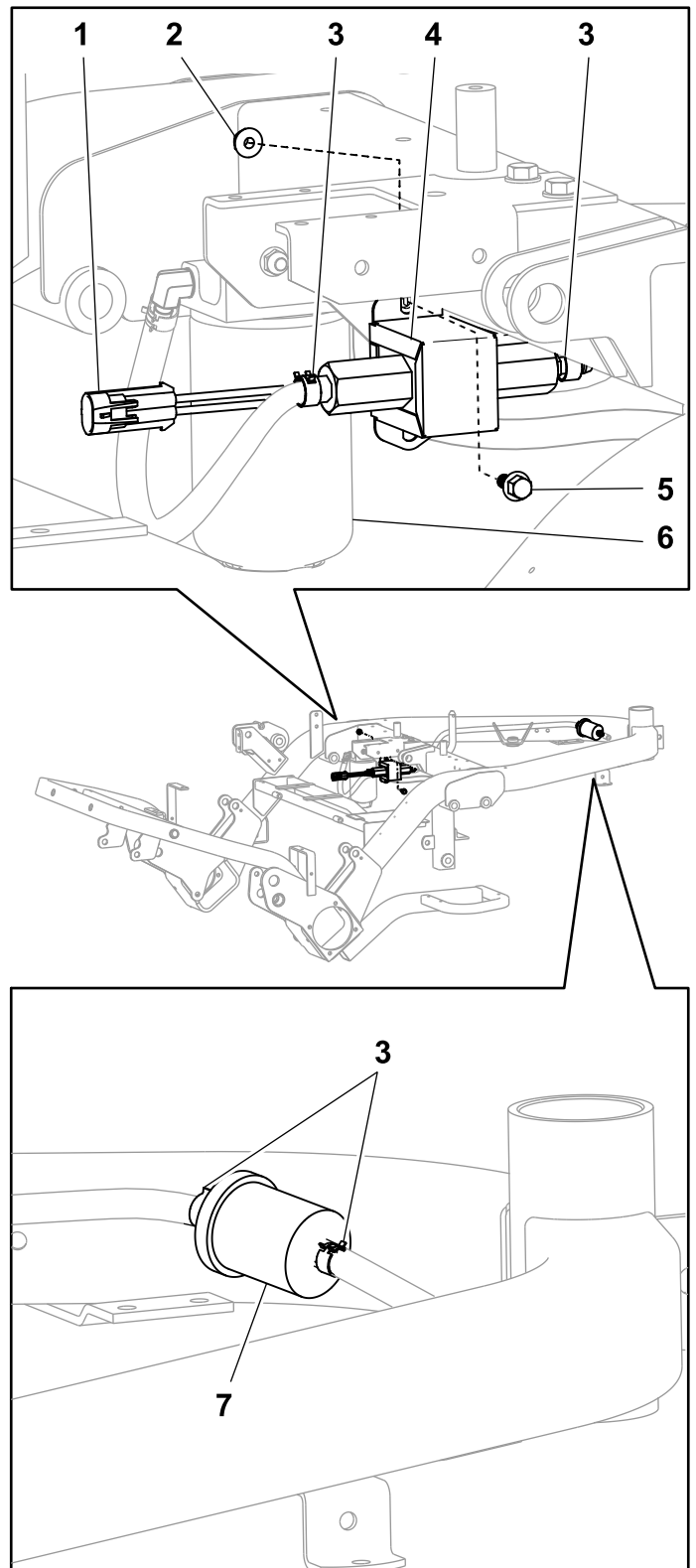


Figure 17

- | | |
|------------------------|--------------------------|
| 1. Fuel-pump connector | 5. Bolt (1/4 x 5/8 inch) |
| 2. Locknut (1/4 inch) | 6. Water separator |
| 3. Hose clamp | 7. Fuel filter |
| 4. Fuel pump | |

15

Installing the Fuel Pump on a Greensmaster GR3400 and GR3420 Machine

Parts needed for this procedure:

1	Fuel-pump plate
1	Fuel pump
1	Fuel filter
4	Hose clamp
2	Bolt (1/4 x 5/8 inch)
2	Nylon locknut (1/4 inch)
1	Hose

Procedure

This procedure is for machines with the following model numbers.

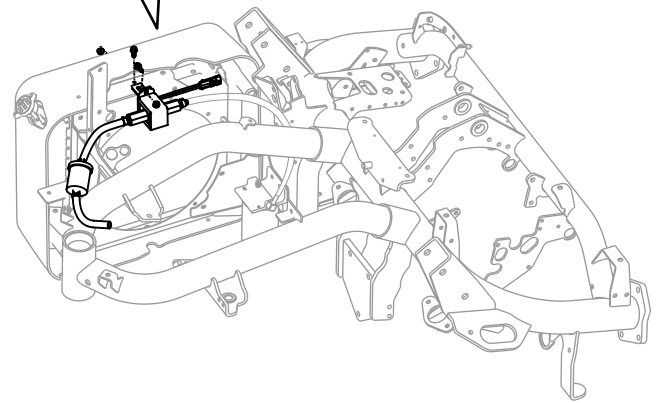
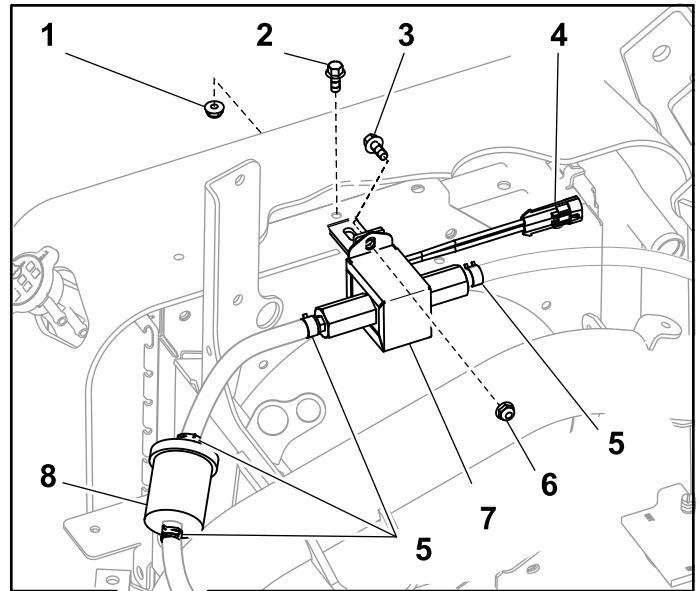
Machine	Model Number
Greensmaster GR3400	04520
Greensmaster GR3420	04540

Use [Figure 1](#) and [Figure 18](#) for this procedure.

Note: Install the fuel filter with the arrow pointing towards the fuel pump.

1. Before removing the existing pump, clamp the fuel hose on both sides of the pump. This will prevent fuel leaking when replacing the pump.
2. Remove the existing fuel hoses from the fuel pump.
3. Remove the existing fuel pump and bracket from the radiator and discard the hardware.
4. Install the new pump plate to the radiator with a bolt (1/4 x 5/8 inch) and locknut (1/4 inch).
5. Install the new fuel pump to the new plate, using the top hole of the pump with a bolt (1/4 x 5/8 inch) and locknut (1/4 inch).
6. Install a hose clamp onto the existing fuel hose from the water separator and install it onto the new fuel pump. Secure it with the hose clamp.
7. Measure and cut a hose length to connect the fuel pump and fuel filter.
8. Install 2 hose clamps onto the hose.

9. Install the hose to the fuel pump and fuel filter and secure it with the 2 hose clamps.
10. Install a hose clamp onto the existing fuel hose from the tank and install the fuel hose onto the new filter. Secure it with the hose clamp.
11. Plug the fuel-pump connector into the harness.



g368980

Figure 18

- | | |
|--------------------------|--------------------|
| 1. Locknut (1/4 inch) | 6. |
| 2. Bolt (1/4 x 5/8 inch) | 7. Fuel pump |
| 3. | 8. Fuel filter |
| 4. Fuel-pump connector | 9. Water separator |
| 5. Hose clamp | |

16

Installing the Fuel Pump on a Dingo® TX 1000 Machine

Parts needed for this procedure:

1	Fuel pump
1	Fuel filter
4	Hose clamp
2	Bolt (1/4 x 5/8 inch)
2	Nylon locknut (1/4 inch)
1	Hose

Procedure

This procedure is for machines with the following model numbers.

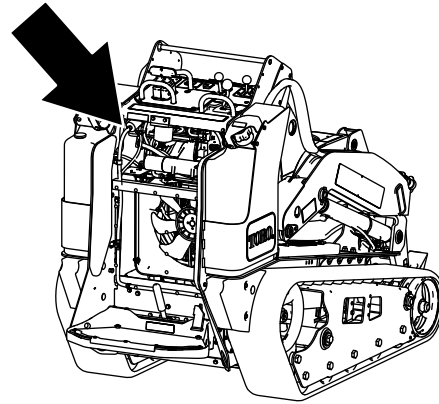
Machine	Model Number
Dingo TX 1000	22327
Dingo TX 1000	22327G
Dingo TX 1000	22327HD
Dingo TX 1000	22328
Dingo TX 1000	22328HD

Use [Figure 1](#), [Figure 19](#), and [Figure 20](#) for this procedure.

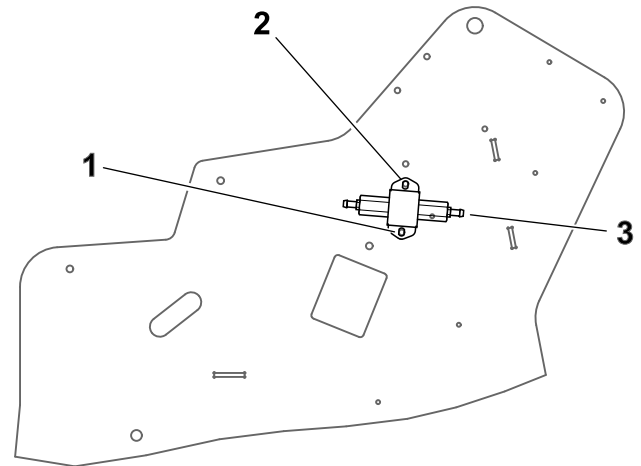
Note: Install the fuel filter with the arrow pointing towards the fuel pump.

1. Remove the hose clamps and existing fuel hoses from the fuel pump.
2. Remove the existing fuel pump from the machine and discard the hardware.

3. Using the new fuel pump as a template, align the top hole of the pump with the lower existing hole in the frame. Mark the location of the bottom hole for the pump.



g369878



g381740

Figure 19

1. Drill 9/32 inch hole here.
2. Existing hole
3. New fuel pump

4. Remove the pump and drill a hole (9/32 inch) at the marked location.

Important: Ensure that you do not damage any wires or hoses inside the frame.

⚠ WARNING

Using a drill without proper eye protection may allow debris to enter the eye, causing injury.

When drilling, always wear eye protection.

5. Install the new fuel pump with 2 bolts (1/4 x 5/8 inch) and 2 locknuts (1/4 inch) as shown in [Figure 20](#).

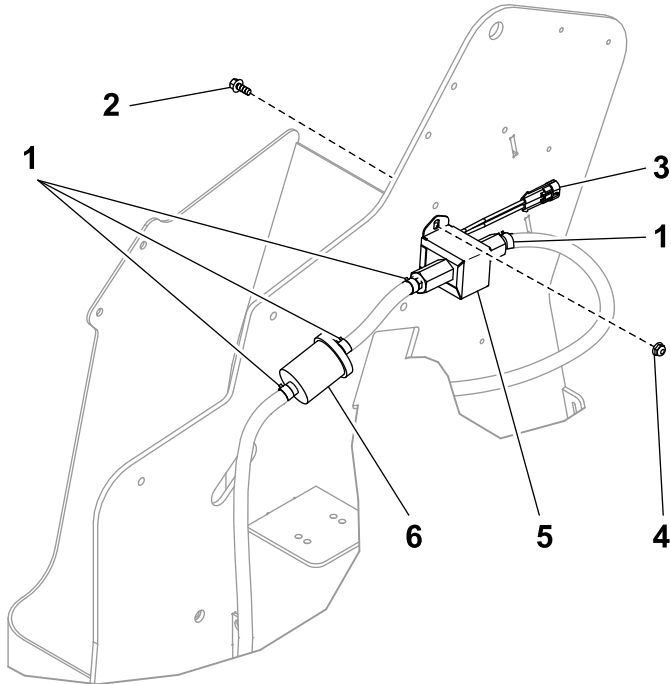


Figure 20

g369030

- | | |
|--------------------------|-----------------------|
| 1. Hose clamp | 4. Locknut (1/4 inch) |
| 2. Bolt (1/4 x 5/8 inch) | 5. Fuel pump |
| 3. Fuel-pump connector | 6. Fuel filter |

6. Install a hose clamp onto the existing fuel hose from the engine and install it onto the new fuel pump. Secure it with the hose clamp.
7. Remove the existing fuel filter.
8. Install a hose clamp onto the existing fuel hose from the tank and install the fuel hose onto the new filter. Secure it with the hose clamp.
9. Measure and cut a hose length to connect the fuel pump and fuel filter.
10. Install a hose clamp onto each end of the hose.
11. Use the new hose to replace the existing hose from the fuel pump to the fuel filter and secure it with the 2 hose clamps.
12. Plug the fuel-pump connector into the harness.

17

Installing the Fuel Pump on a Dingo TX 525 Machine

Parts needed for this procedure:

1	Fuel-pump plate
1	Fuel pump
1	Fuel filter
4	Hose clamp
2	Bolt (3/8 x 1 inch)
2	Nylon locknut (3/8 inch)
1	Self-tapping screw (1/4 x 1/2 inch)
1	Hose

Procedure

This procedure is for machines with the following model numbers.

Machine	Model Number
Dingo TX 525	22323
Dingo TX 525	22323G
Dingo TX 525	22324

Use [Figure 1](#) and [Figure 21](#) through [Figure 25](#) for this procedure.

Note: Install the fuel filter with the arrow pointing towards the fuel pump.

1. Remove the hose clamps and existing fuel hoses from the fuel pump.
2. Remove the existing fuel pump from the plate and discard the hardware.

- Remove the fuel-filter canister bracket from the plate. Retain the hardware.

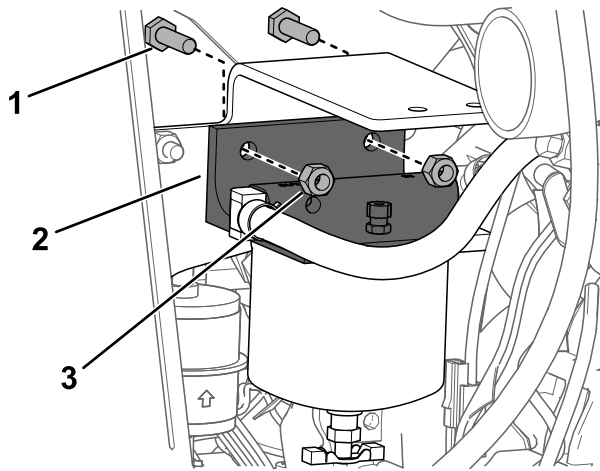


Figure 21

g382243

- Bolt—1/4 x 7/8 inch (2)
- Fuel-filter canister bracket
- Nut—1/4 inch (2)

- Remove the R-clamp from the plate and hose. Retain the hardware.

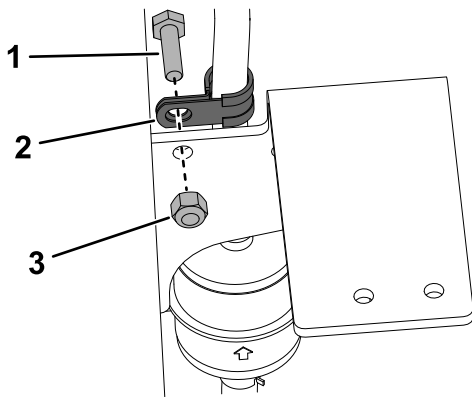


Figure 22

g382244

- Bolt—1/4 x 7/8 inch
- R-clamp
- Nut—1/4 inch

- Remove the plate and retain the hardware.

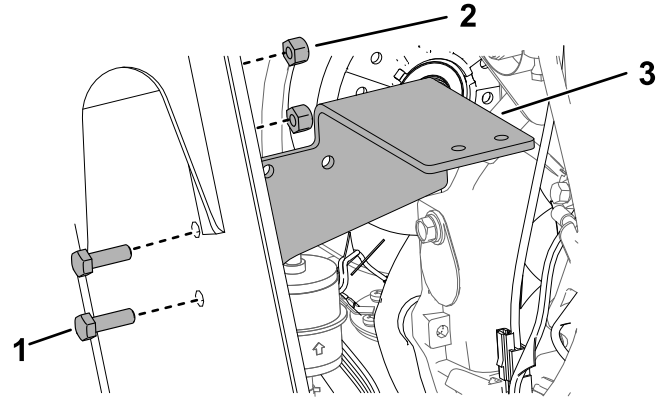


Figure 23

g381855

- Bolt—5/16 x 1 inch (2)
- Nut—5/16 inch (2)
- Plate

- Locate, mark, and drill 2 holes (13/32 inch) into the plate as shown in [Figure 24](#).

⚠ WARNING

Using a drill without proper eye protection may allow debris to enter the eye, causing injury.

When drilling, always wear eye protection.

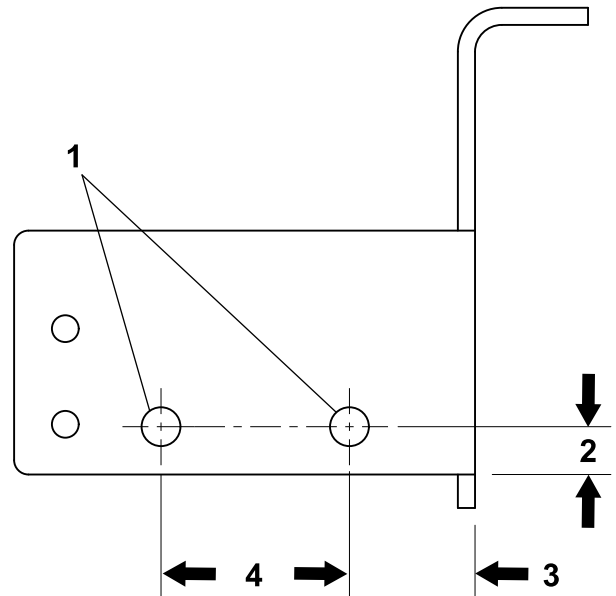


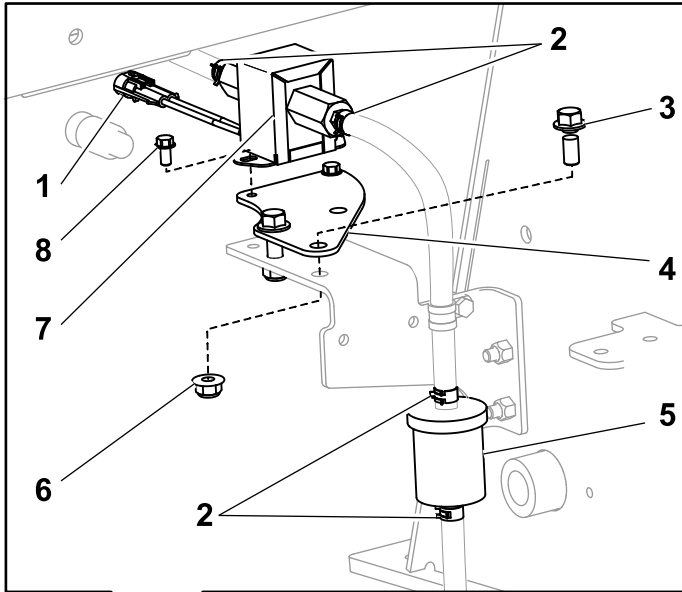
Figure 24

g369032

- 13/32 inch hole
- 13 mm (1/2 inch)
- 33 mm (1-5/16 inches)
- 51 mm (2 inches)

- Install the plate on the frame as shown in [Figure 23](#).

8. Install the new fuel pump to the fuel-pump bracket with 2 self-tapping screws (1/4 x 1/2 inch) as shown in [Figure 25](#).



11. Remove the existing in-line fuel filter.
12. Install a hose clamp onto the existing fuel hose from the tank and install the fuel hose onto the new filter. Secure it with the hose clamp.
13. Measure and cut a hose length to connect the fuel pump and fuel filter. Install the R-clamp to the hose.
14. Install a hose clamp onto each end of the hose.
15. Use the new hose to replace the existing hose from the fuel pump to the fuel filter and secure it with the 2 hose clamps.
16. Secure the R-clamp to the plate as shown in [Figure 22](#).
17. Install the fuel-filter canister to the plate as shown in [Figure 21](#).
18. Plug the fuel-pump connector into the harness.

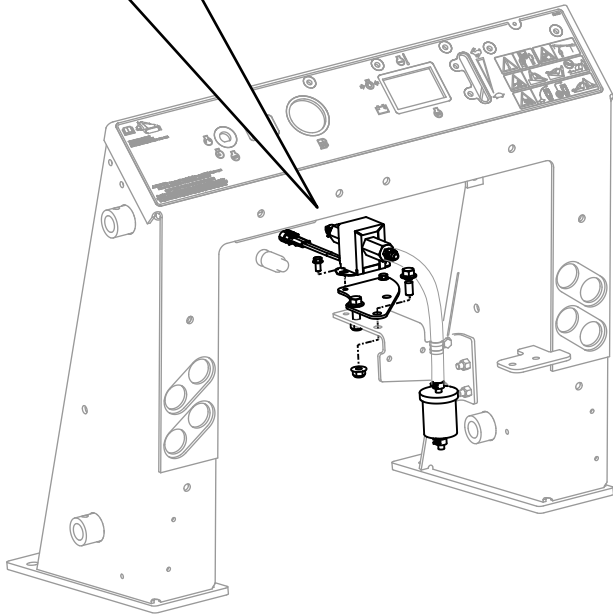


Figure 25

g369031

- | | |
|------------------------|--|
| 1. Fuel-pump connector | 5. In-line fuel filter |
| 2. Hose clamp | 6. Locknut (3/8 inch) |
| 3. Bolt (3/8 x 1 inch) | 7. Fuel pump |
| 4. Fuel-pump plate | 8. Self-tapping screw (1/4 x 1/2 inch) |

9. Using the new holes, install the pump and bracket to the plate with 2 bolts (3/8 x 1 inch) and 2 locknuts (3/8 inch).
10. Install a hose clamp onto the existing fuel hose from the engine and install it onto the new fuel pump. Secure it with the hose clamp.



Count on it.