



72in Side Discharge Cutting Unit Groundsmaster[®] 200 Series

Model No. 30553—210000001 and Up

Model No. 30553TE—210000001 and Up

Parts Catalog

Ordering Replacement Parts

To order replacement parts, please supply: the part number, the quantity, and the description of each part desired.

Understanding Reference Numbers

Each identified part in an illustration has a reference number. The reference number for a part also appears in the parts list, along with other information about the part.

This catalog uses two special reference number formats, one to indicate parts in a service assembly and another to indicate the quantity of a given part in an illustration.

Service Assembly Reference Numbers

Parts in service assemblies have reference numbers in the form **a:b**. The **a** represents the reference number of the entire service assembly and the **b** represents a sequential number unique to each part within the service assembly.

For example, a wheel assembly might be identified by reference number **6**, the tire by **6:1**, the valve by **6:2**, and the wheel by **6:3**. When you order the assembly identified by reference number **6**, you receive all parts identified by reference numbers **6:1**, **6:2**, and **6:3**. However, you may also order any part individually.

Reference numbers of this type appear in illustrations and in part lists.

Reference Numbers Indicating Quantity

In an illustration, if a reference number indicates more than one part, the reference number has the form **nX y**. The **n** represents the quantity of the part, the **X** is the multiplication symbol, and the **y** represents the reference number.

For example, in an illustration, the reference number **2X 37** means that two of the parts identified by reference number **37** are indicated.

Contents

Description	Page	Description	Page
Roller and Drive Assembly	3	Lift Arm and Castor Arm Assembly	8
Gear Box Assembly No. 104-3441	5	Counterbalance Assembly	10
Spindle and Blade Assembly	6	Decal Assembly	11
Cover and Deflector Assembly	7		

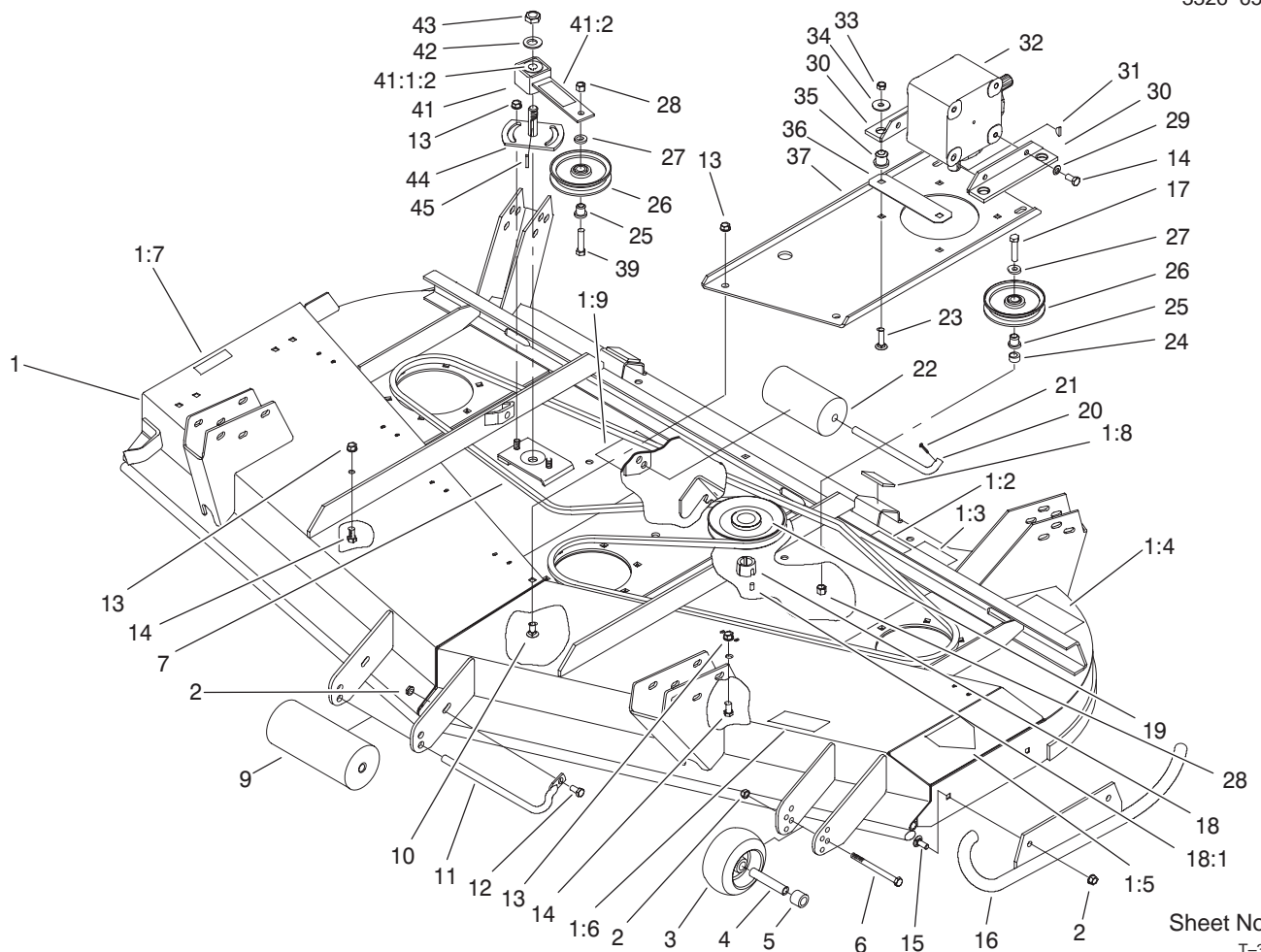
Accessories

Description	Model / Part No.	Description	Model / Part No.
Spindle Kit	95-3080	Rear Weight Kit (includes 2-35lb.)	24-5780
Leaf Mulcher	30779	Front Baffle Kit	99-5155
Leaf Mulcher Discharge Plate	57-0700		

Part Description Abbreviations

Part descriptions in this catalog may include the following abbreviations.

Abbreviation	Meaning	Abbreviation	Meaning
AR	as required	HYD	hydraulic
ASM	assembly	INC	incorporated
CARR	carriage	LH	left hand
DEG	degrees	NI	nylon insert
FH	flat head	PPH	Phillips pan head
GA	gauge	PTH	Phillips truss head
HF	hex flange	PTO	power take off
HH	hex head	RH	right hand
HHF	hex head flange	SFH	slotted fillister head
HLH	hex lag head	SHH	slotted hex head
HJ	hex jam	SQH	square head
HOC	height-of-cut	SHWH	slotted hex washer head
HS	hex socket	SPH	slotted pan head
HSBH	hex socket button head	SRH	slotted round head
HSFH	hex socket flat head	STD	standard
HSH	hex socket head	TAP	self tapping
HWH	hex washer head	TTH	Torx truss head
HWHTF	hex washer head thread forming	WH	wing head



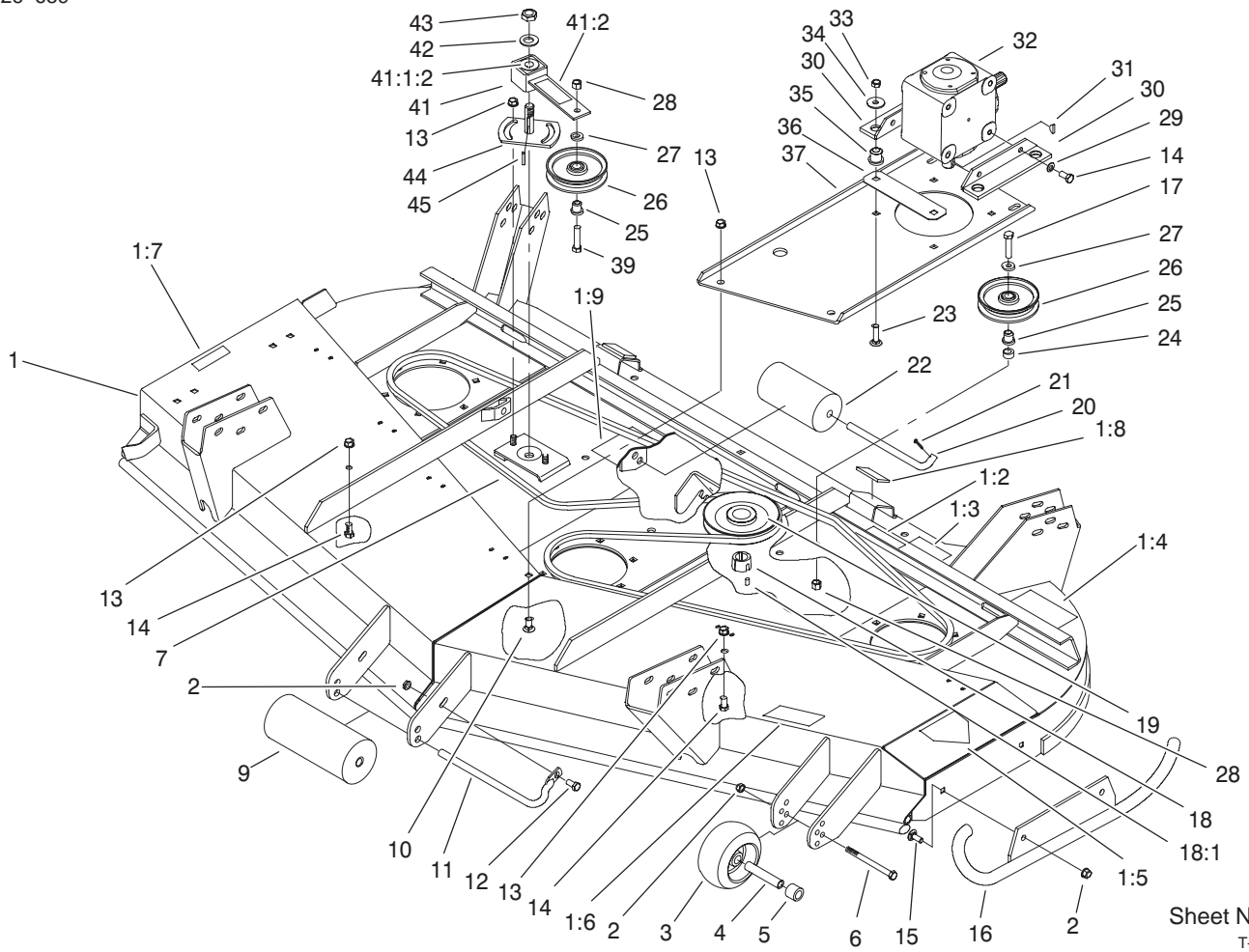
Sheet No.:2
T-3693

Roller and Drive Assembly

Ref. No.	Part No.	Qty.	Description
1	99-8406	1	72" Deck ASM (only on: 30553te)
1	99-1278	1	72" Deck ASM (only on: 30553)
1:2	100-6578	2	Decal-Danger
1:3	93-7818	1	Decal-Torque, Blade Bolt
1:4	99-8401	1	Decal-Warning
1:5	100-6582	1	Decal-Danger, Int'l
1:6	93-7824	2	Decal-Danger, Int'l
1:7	100-6553	1	Decal-Danger
1:8	74-0340	2	Cushion-Rubber
1:9	99-5172	1	Decal-Routing, Belt
2	32128-19	4	Nut-HF
3	68-2730	1	Wheel-Gage
4	98-7912	1	Tube-Spanner
5	98-7913	1	Tube-Spacer
6	323-23	1	Screw-HH
7	57-0240	1	V-Belt
9	68-6710	1	Roller
10	3231-27	4	Screw-CARR
11	68-6840	1	Shaft-Roller
12	3234-11	1	Screw-HHF
13	3290-357	8	Nut-Flange, Lock
14	323-4	6	Screw-HH
15	3231-22	2	Screw-CARR

Ref. No.	Part No.	Qty.	Description
16	98-7923-01	1	Skid
17	3211-9	1	Screw-HH
18	27-6140	1	Bushing-Lock, Taper
18:1	3245-9	2	Screw-Set
19	63-9900-03	1	Pulley
20	40-0340	2	Shaft-Roller, Rear
21	3272-11	2	Pin-Cotter
22	36-1740	2	Roller-Deck
23	3231-26	4	Screw-CARR
24	44-6390	1	Spacer
25	65-5950	2	Bushing-Pulley
26	65-5940	2	Pulley-Idler
27	7-0081	2	Washer-Flat
28	3296-5	2	Nut-Lock NI
29	3253-21	4	Washer-Lock
30	68-8560-03	2	Bracket-Gearbox
31	3257-5	1	Key-Woodruff
32	104-3441	1	Gearbox
33	32153-2	4	Nut-Lock
34	63-8410	4	Washer
35	63-9750	4	Mount
36	68-9890-01	1	Cover-Gearbox, Front
37	68-8530-01	1	Base-Gearbox
39	3211-8	1	Screw-HH
41	100-6178	1	Idler Arm ASM

☆ Not serviced



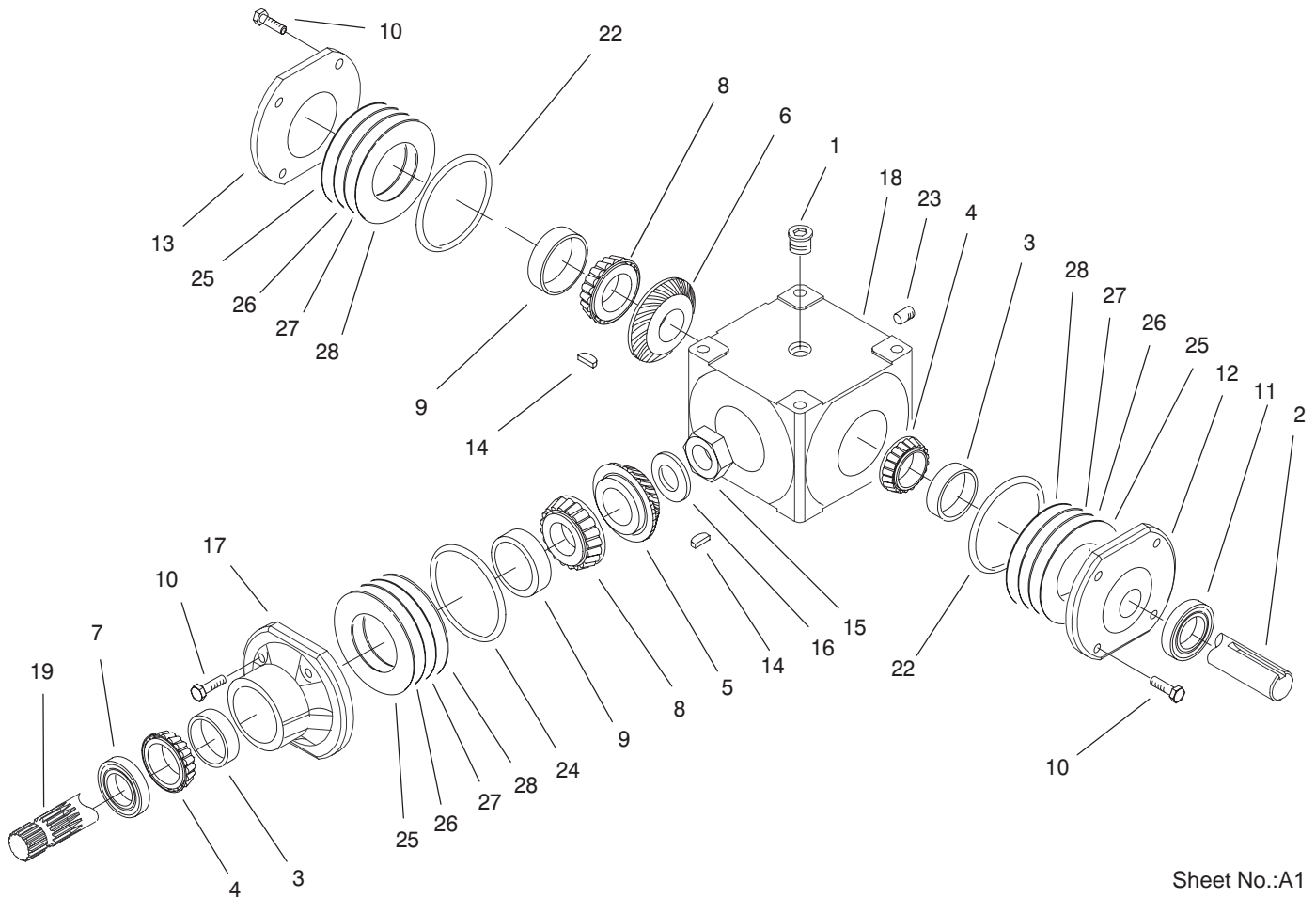
Sheet No.:2
T-3693

Roller and Drive Assembly (Continued)

Ref. No.	Part No.	Qty.	Description
☆41:1		1	Idler Socket & Bushing ASM
41:1:2	27-8490	1	Bushing-Rubber, Idler
41:2	100-6578	1	Decal-Danger
42	3256-27	1	Washer-Flat
43	3296-33	1	Nut-Lock, NI
44	44-6300	1	Plate - Idler
45	5-1077	1	Key-Square

Ref. No.	Part No.	Qty.	Description

☆ Not serviced

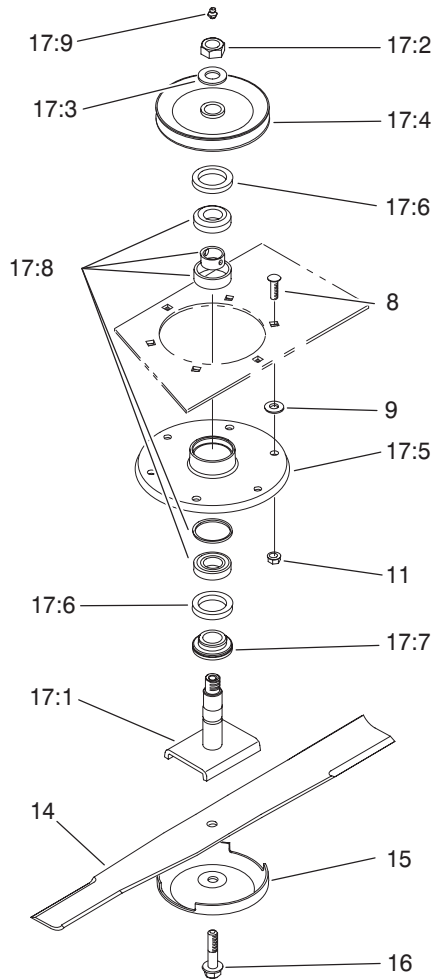


Sheet No.:A1

T-3520

Gear Box Assembly No. 104-3441

Ref. No.	Part No.	Qty.	Description	Ref. No.	Part No.	Qty.	Description
1	100-5812	3	Plug				
2	100-9980	1	Shaft-Cross				
3	100-4571	2	Bearing-Cup				
4	100-4572	2	Bearing-Cone				
5	100-9981	1	Gear-Spiral, RH				
6	100-9982	1	Gear-Spiral, LH				
7	100-4575	1	Seal				
8	100-5816	2	Bearing-Cone				
9	100-5817	2	Bearing-Cup				
10	100-5818	12	Screw-HH				
11	100-4576	1	Seal				
12	100-5820	1	Cap - End				
13	100-9984	1	Cap-End, Closed				
14	100-5822	2	Key				
15	100-5823	1	Nut - Lock				
16	100-5824	1	Washer				
17	100-5825	1	Housing - Pinion				
18	100-9985	1	Case				
19	104-0118	1	Shaft-Pinion				
22	100-1372	2	O-Ring				
23	100-4579	1	Plug				
24	100-1393	1	O-Ring				
25	100-1394	1	Shim-Green (.003)				
26	100-1395	1	Shim-Blue (.005)				
27	100-1396	1	Shim-Brown (.010)				
28	100-1397	1	Shim-Yellow (.020)				

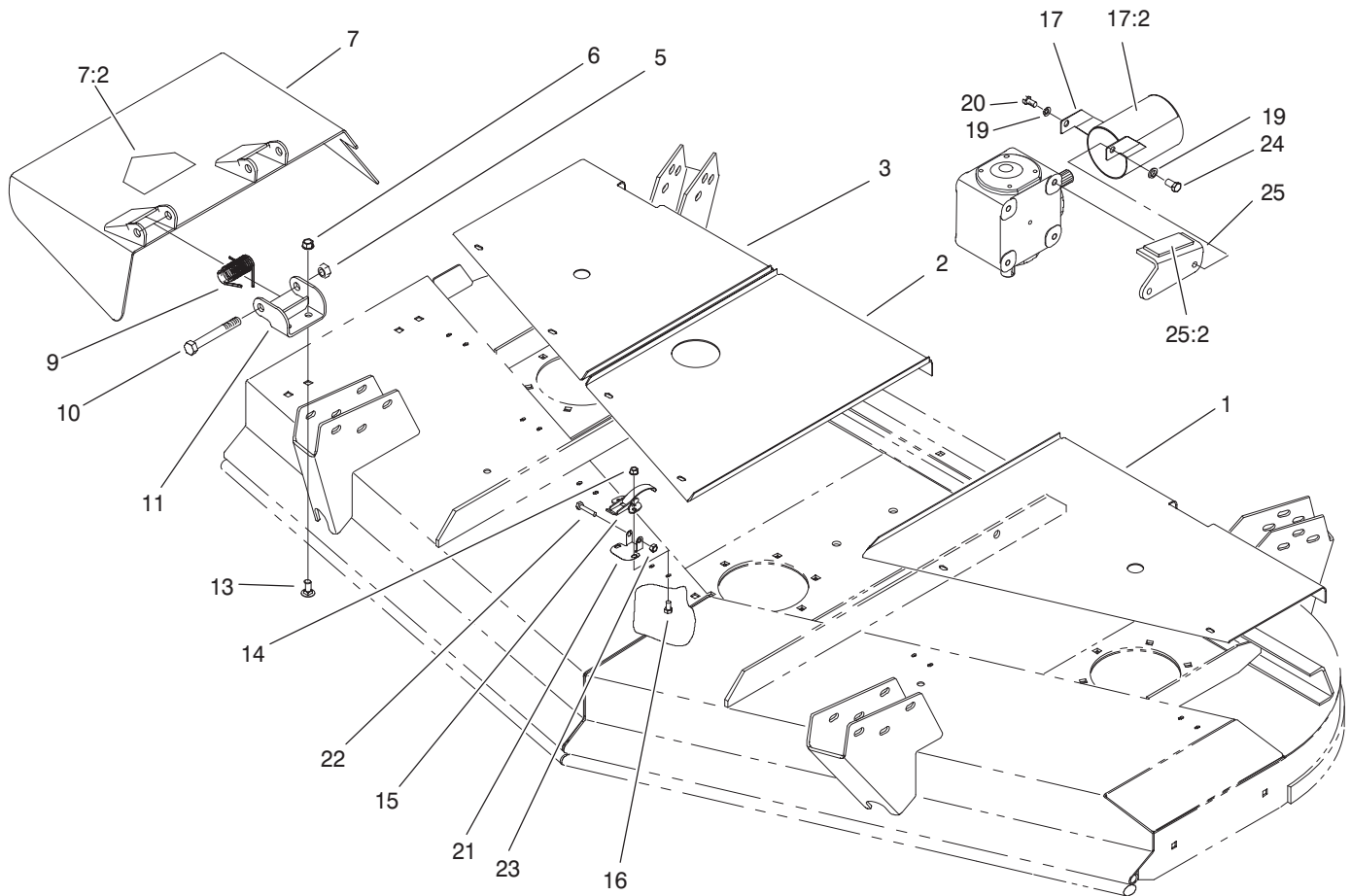


Sheet No.:3

Spindle and Blade Assembly

Ref. No.	Part No.	Qty.	Description
8	3231-22	18	Screw-CARR
9	3256-24	2	Washer-Flat
11	32128-21	18	Nut-HF
14	94-1861-03	3	Blade
15	72-9361	3	Cup-Scalp, Anti
16	92-5816	3	Bolt-Blade
17	57-0260	3	Spindle ASM
17:1	27-0920	1	Shaft-Spindle
17:2	32146-20	1	Nut-Jam
17:3	7-4150	1	Washer-Pinion
17:4	57-0560-03	1	Pulley & Hub ASM
17:5	61-4160	1	Housing-Spindle
17:6	253-139	2	Seal-Oil
17:7	27-0950	1	Spacer-Bearing, Spindle
17:8	46-8530	1	Bearing ASM
17:9	302-2	1	Fitting-Grease

Ref. No.	Part No.	Qty.	Description

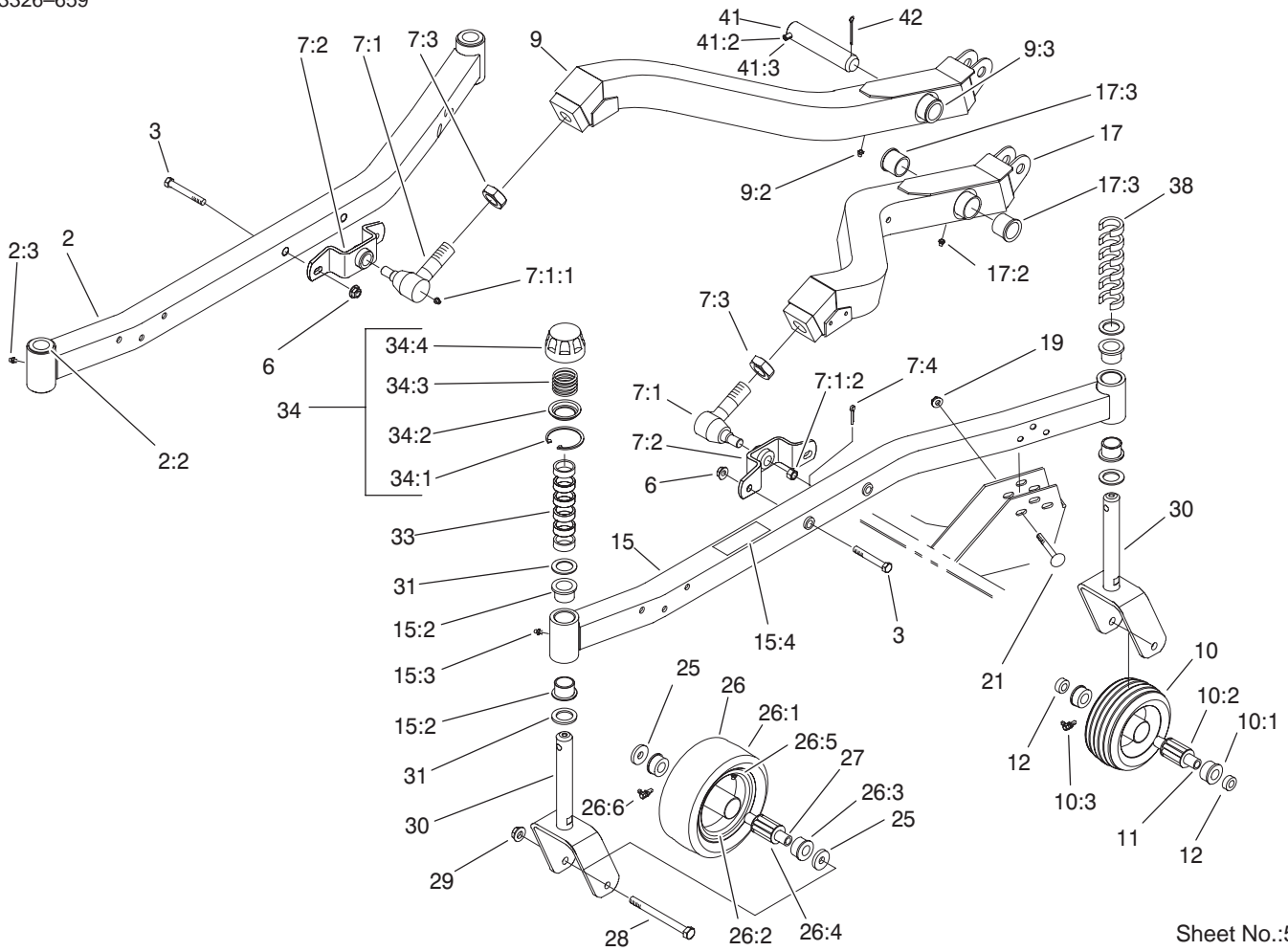


Sheet No.:4

Cover and Deflector Assembly

Ref. No.	Part No.	Qty.	Description
1	98-7930-01	1	Cover - Belt, LH
2	57-0210-01	1	Cover-Center
3	98-7928-01	1	Cover - Belt, RH
5	32153-5	2	Nut-Lock
6	3290-357	4	Nut-Flange, Lock
7	100-6181	1	Int'l Deflector ASM (only on: 30553te)
7	14-0909	1	Deflector ASM (only on: 30553)
7:2	100-6582	1	Decal-Danger, Int'l (only on: 30553te)
7:2	54-9220	1	Decal-Danger (only on: 30553)
9	51-1550	2	Spring
10	325-17	2	Screw-HH
11	51-1530-01	2	Bracket-Hinge
13	3231-27	4	Screw-CARR
14	32128-17	12	Nut-Lock, Flange
15	249-21	6	Clamp-Slotted
16	3290-321	12	Screw-HWH
17	99-8408	1	PTO Guard ASM (only on: 30553te)
17:2	93-7283	1	Decal-Danger (only on: 30553te)
19	3253-21	3	Washer-Lock (only on: 30553te)

Ref. No.	Part No.	Qty.	Description
20	323-2	1	Screw-HH (only on: 30553te)
21	93-7043	3	Retainer-Latch (only on: 30553te)
22	321-8	3	Screw-HH (only on: 30553te)
23	3296-56	3	Nut-Lock, NI (only on: 30553te)
24	323-4	2	Screw-HH
25	105-3683	2	Gearbox Guard ASM
25:2	74-0342	1	Cushion-Rubber



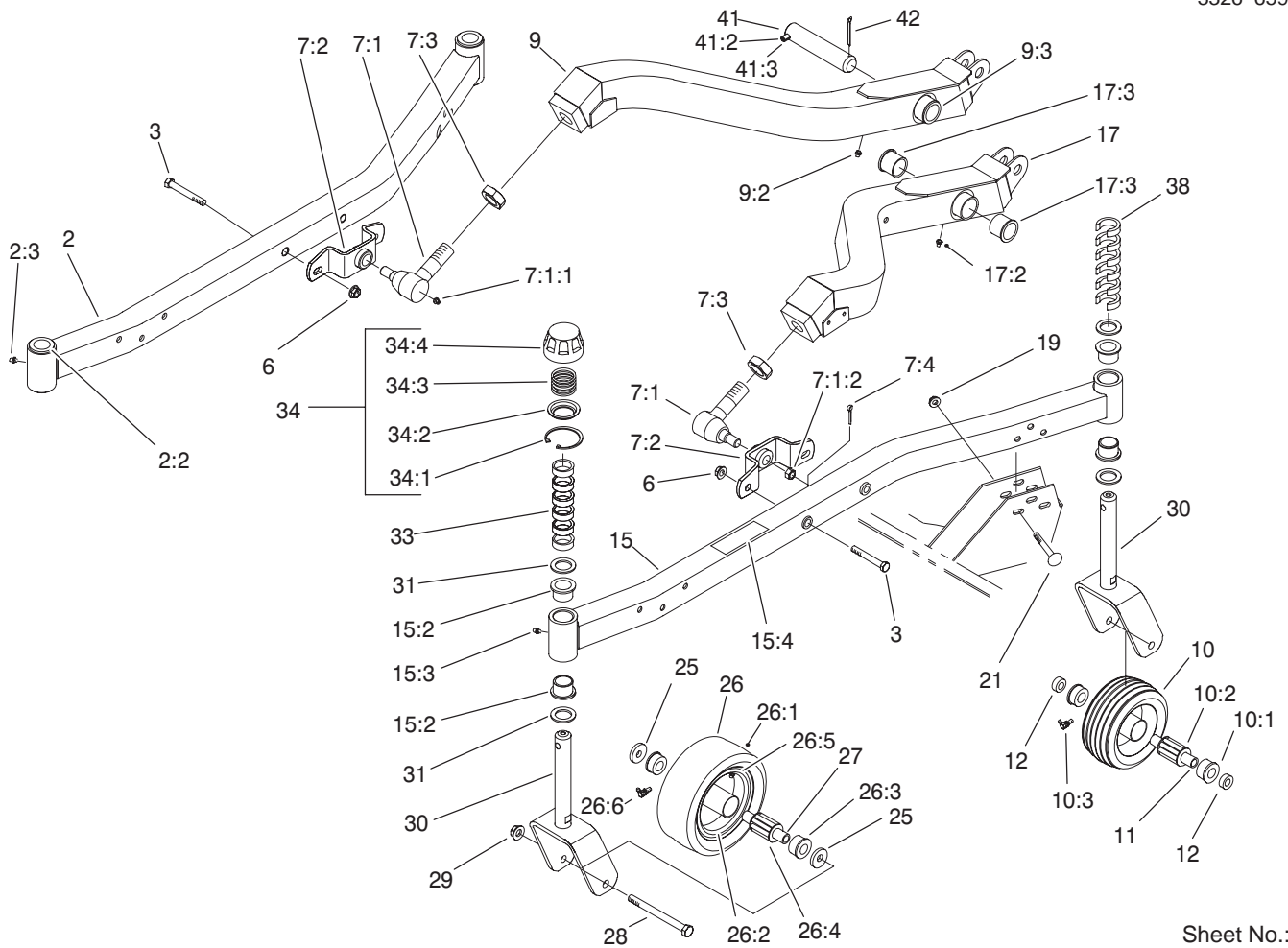
Sheet No.:5

Lift Arm and Castor Arm Assembly

Ref. No.	Part No.	Qty.	Description
2	98-7934	1	RH Castor Arm ASM
2:2	94-1291	4	Bushing-Special
2:3	302-5	2	Fitting-Grease
3	324-12	4	Screw-HH
6	32128-42	4	Nut-HF
☆7		2	Balljoint ASM
7:1	86-8100	1	Joint-Ball
7:1:1	302-5	1	Fitting-Grease
7:1:2	32136-2	1	Nut-SHH
7:2	98-7944-01	1	Mount-Balljoint
7:3	21-3000	1	Nut-HJ, Push Arm
7:4	3272-12	1	Pin-Cotter
9	98-7900	1	Arm-Lift, RH
9:2	302-5	1	Fitting-Grease
9:3	256-268	2	Bushing
10	63-8400	2	Caster-Wheel & Tire
10:1	62-5580	2	Bearing-Outside
10:2	63-8580	1	Bearing-Roller
10:3	302-11	1	Fitting-Lube 45°
11	63-1770	2	Spanner
12	99-1291	4	Spacer
15	98-7933	1	LH Castor Arm ASM
15:2	94-1291	4	Bushing-Special
15:3	302-5	2	Fitting-Grease
15:4	92-3035	1	Decal-HOC
17	98-7903	1	Arm-Lift, LH

Ref. No.	Part No.	Qty.	Description
17:2	302-5	1	Fitting-Grease
17:3	256-268	2	Bushing
19	32128-19	12	Nut-HF
21	3231-10	12	Screw-CARR
25	70-8040	4	Washer
26	99-1268	2	Castor Wheel ASM
26:1	93-9939	1	Tire
26:2	100-2348	1	Rim ASM
26:3	62-5580	2	Bearing-Outside
26:4	62-5570	1	Bearing-Roller
26:5	100-5832	1	Tube W/ Valve
26:6	302-11	1	Fitting-Lube 45°
27	68-8980	2	Spanner-Tire
28	325-19	4	Screw-HH
29	32128-23	4	Nut-HF
30	98-7921-01	4	Fork-Castor
31	3-6781	8	Washer-Thrust
33	63-0070	12	Spacer
34	92-8862	4	HOC Cap ASM
34:1	92-5581	1	Ring-Retaining
34:2	92-5583	1	Washer-Cap
34:3	92-5584	1	Spring-Compression
34:4	92-8861	1	Cap-HOC
38	99-1283	12	Spacer
41	98-2330	2	Pivot Pin ASM
41:2	32121-67	1	Pin-Roll

☆ Not serviced

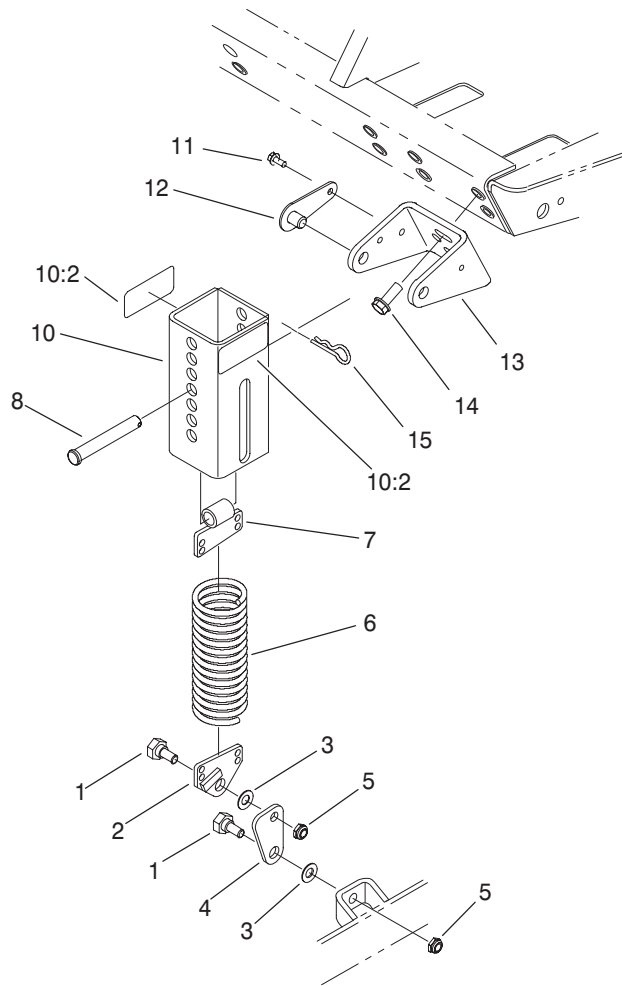


Sheet No.:5

Lift Arm and Castor Arm Assembly (Continued)

Ref. No.	Part No.	Qty.	Description
41:3	32121-61	1	Pin-Roll
42	3272-19	2	Pin-Cotter

Ref. No.	Part No.	Qty.	Description
----------	----------	------	-------------

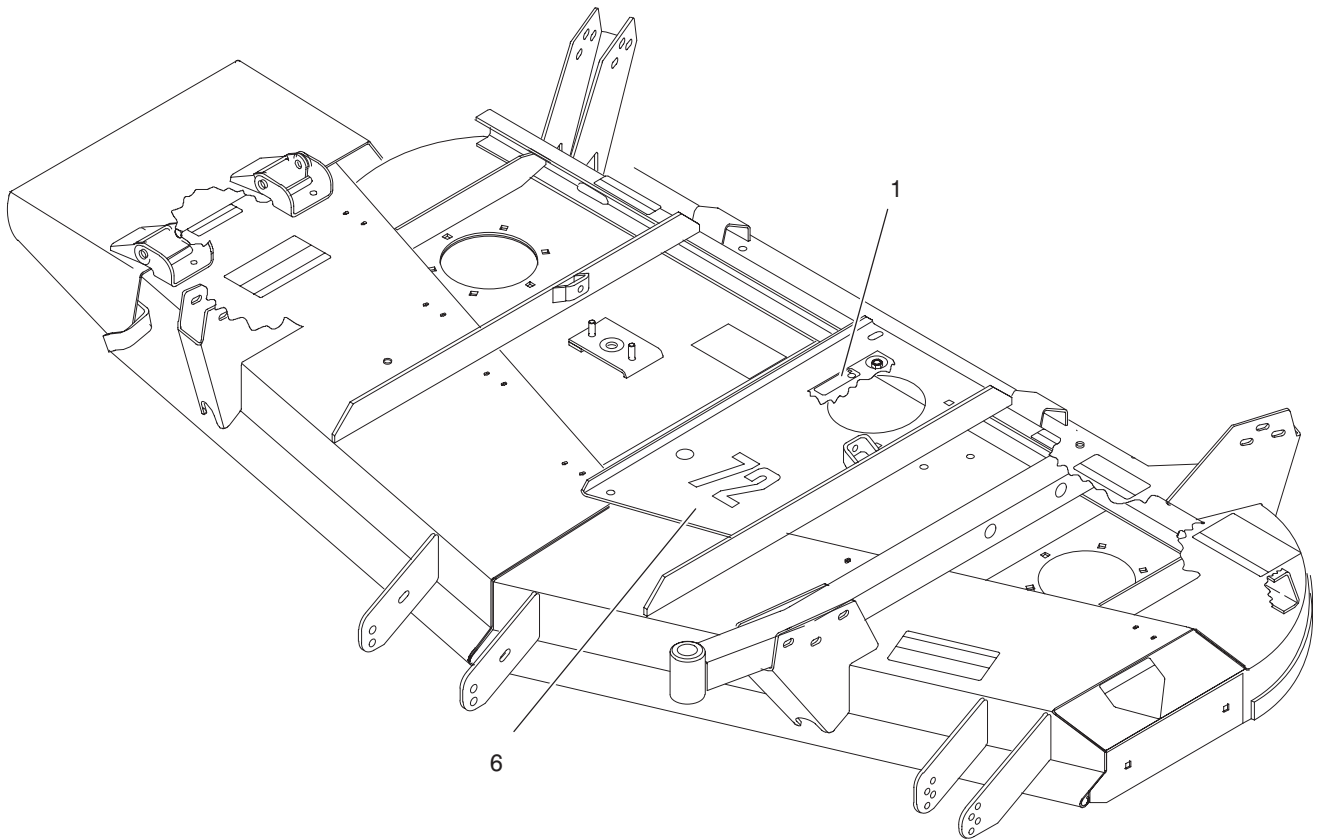


Sheet No.:6

Counterbalance Assembly

Ref. No.	Part No.	Qty.	Description
1	46-3380	4	Bolt-Shoulder
2	66-8420-03	2	End-Spring
3	3256-24	4	Washer-Flat
4	66-8440-01	2	Link-Knee
5	3296-44	4	Nut-Lock, NI
6	66-8390-03	2	Spring-Extension
7	70-7940-03	2	End-Spring
8	283-69	2	Clevis-Pin
10	100-6179	2	Spring Cover ASM
10:2	93-6696	2	Decal-Loaded, Spring
11	12-3270	4	Screw
12	70-7920	4	Pin-Lock
13	66-8230-01	2	Bracket-Support
14	3234-11	4	Screw-HHF
15	3290-355	2	Pin-Hair

Ref. No.	Part No.	Qty.	Description



Sheet No.:7
T-3694

Decal Assembly

Ref. No.	Part No.	Qty.	Description
1	93-6697	1	Decal-Lube (only on: 30553te)
6	57-0280	1	Decal (only on: 30553te)

Ref. No.	Part No.	Qty.	Description

