



# LED Light Kit

Groundsmaster® 3500 Series Rotary Mower or Reelmaster® 3100-D Series Traction Unit

Model No. 31692

## Installation Instructions

# Installation

## Loose Parts

Use the chart below to verify that all parts have been shipped.

| Procedure | Description  | Qty.                  | Use                            |
|-----------|--|-----------------------|--------------------------------|
| <b>1</b>  | No parts required  | –                     | Prepare the machine.           |
| <b>2</b>  | No parts required  | –                     | Drill the hole for the switch. |
| <b>3</b>  | Light bracket<br>Bolt (5/16 x 1/2 inches)<br>Nut (5/16 inch)<br>Light assembly<br>Hex-head flange bolt (5/16 x 3/4 inches) | 2<br>2<br>6<br>2<br>4 | Install the light assemblies.  |
| <b>4</b>  | Wire harness (black and blue light connectors)<br>Wire harness 15.2 cm (6 inch)<br>Switch assembly                         | 1<br>1<br>1           | Install the wire harnesses.    |

**Note:** Retain all removed parts for later installation unless otherwise noted.

# 1

## Preparing the Machine

### No Parts Required

### Procedure

1. Park the machine on a level surface.
2. Disengage the PTO and engage the parking brake.
3. Lower the cutting unit.
4. Shut off the engine and remove the key.
5. Wait for all moving parts to stop.
6. Allow the engine to cool completely.



# 2

## Drilling the Hole for the Switch

No Parts Required

### Procedure

1. Remove the cover from the battery box (Figure 1).

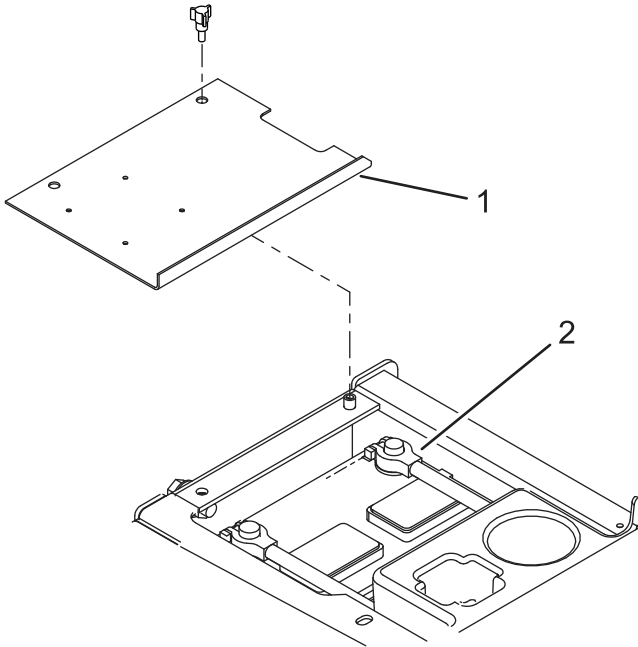


Figure 1

g312596

1. Battery box cover
2. Negative (-) battery cable

### **⚠ WARNING**

Battery terminals or metal tools could short against metal machine components, causing sparks. Sparks can cause the battery gasses to explode, resulting in personal injury.

- When disconnecting or connecting the battery, do not allow the battery terminals to touch any metal parts of the machine.
- Do not allow metal tools to short between the battery terminals and metal parts of the machine.

### **⚠ WARNING**

Incorrect battery cable routing could damage the machine and cables causing sparks. Sparks can cause the battery gasses to explode, resulting in personal injury.

- Always disconnect the negative (black) battery cable before disconnecting the positive (red) cable.
- Always connect the positive (red) battery cable before connecting the negative (black) cable.

2. Disconnect the negative (-) battery cable from the battery (Figure 1).
3. Remove the 2 screws securing the console shroud and remove the shroud (Figure 2).

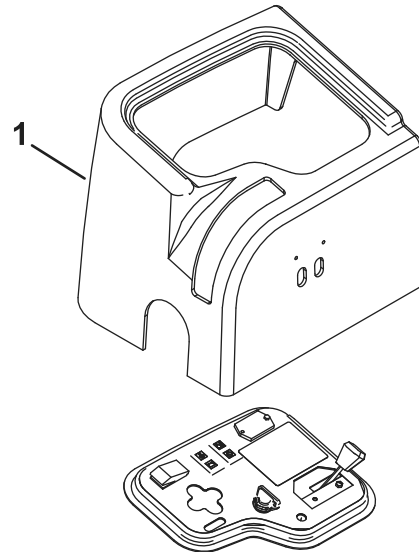


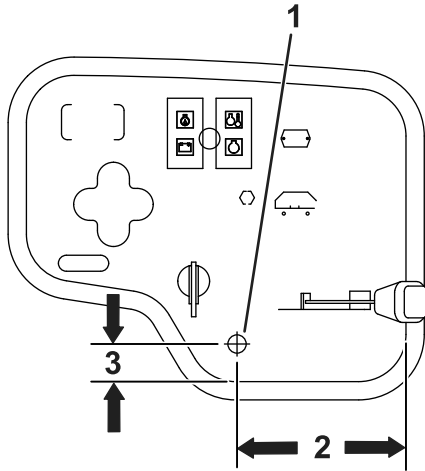
Figure 2

g312597

1. Console shroud

4. Check your machine for an existing hole for the light switch in the control panel. If your machine has an existing hole, proceed to the step after the drilling information.

- Using the dimensions shown in [Figure 3](#), locate, mark, and drill a 13 mm (1/2 inch) diameter hole in the control panel.



**Figure 3**

g312592

- 13 mm (1/2 inch) hole
- 11.7 cm (4-5/8 inches)
- 25 mm (1 inch)

**Note:** Install the control panel after you install the harness to the switch. Refer to [4 Installing the Wire Harnesses \(page 4\)](#).

# 3

## Installing the Light Assemblies

### Parts needed for this procedure:

|   |  |
|---|--|
| 2 | Light bracket                            |
| 2 | Bolt (5/16 x 1/2 inches)                 |
| 6 | Nut (5/16 inch)                          |
| 2 | Light assembly                           |
| 4 | Hex-head flange bolt (5/16 x 3/4 inches) |

### Procedure

- For a Reelmaster 3100 machine, mount the light brackets to the front of the footrest with 4 hex-head flange bolts (5/16 x 3/4 inches) and 4 locknuts (5/16 inch); refer to [Figure 4](#).
- For a Groundsmaster 3500 machine, mount the light brackets to the front of the footrest with 2 hex-head flange bolts (5/16 x 3/4 inches), 2 locknuts (5/16 inch), and the existing hardware and spacer; refer to [Figure 4](#).

**Note:** The spacer and existing hardware is used for the mower deck latch on the Groundsmaster 3500 machine.

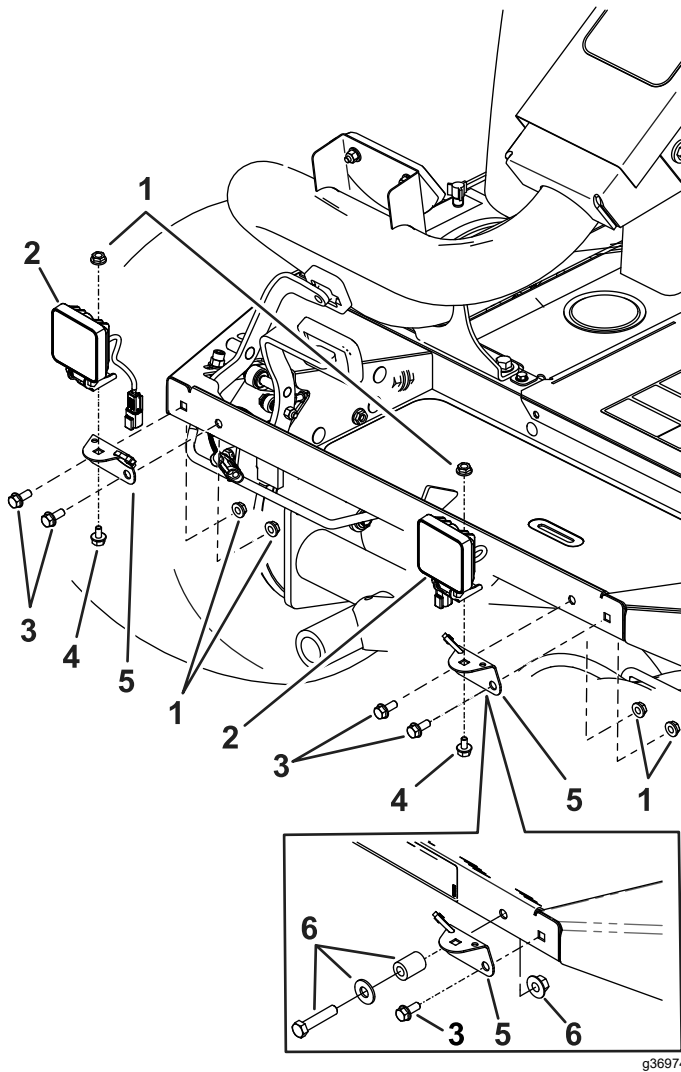
- Mount the 2 lights to the brackets with 2 bolts (5/16 x 1/2 inch) and 2 locknuts (5/16 inch); refer to [Figure 4](#).

# 4

## Installing the Wire Harnesses

### Parts needed for this procedure:

|   |  |
|---|--|
| 1 | Wire harness (black and blue light connectors) |
| 1 | Wire harness 15.2 cm (6 inch)                  |
| 1 | Switch assembly                                |



**Figure 4**

- |  |  |
|--|--|
| 1. Locknut (5/16 inch)                       | 4. Bolt (5/16 x 1/2 inch)                          |
| 2. Light                                     | 5. Light bracket                                   |
| 3. Hex-head flange bolts (5/16 x 3/4 inches) | 6. Groundsmaster 3500 existing hardware and spacer |

### Procedure

Use this procedure for traction units with the following serial number ranges.

- Reelmaster 3100 with serial numbers 240000001 to present
- Groundsmaster 3500 with serial numbers 240000001 to present
- Groundsmaster 3505 with serial numbers 250000001 to present

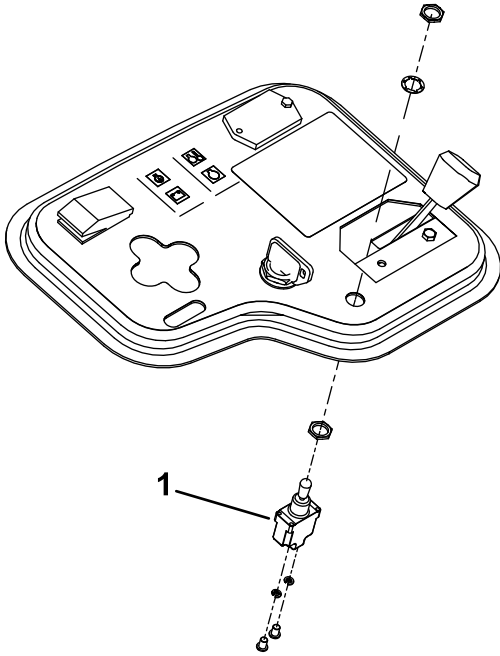
1. Connect the harness with the 2 black and blue wired connectors to the lights.
2. Route the single black wired ring terminal through the hole in the frame to the battery compartment.

**Note:** Do not connect to the battery at this point.

3. Connect the blue wired male terminal on the harness to the existing blue wired female terminal located under the operator platform at the top right corner ([Figure 6](#)).
4. Secure the harness with plastic ties.

5. Mount the switch to control panel with the hex nuts and lock washer (Figure 5).

**Note:** The key way slot in the switch mounting threads indicates the OFF position.

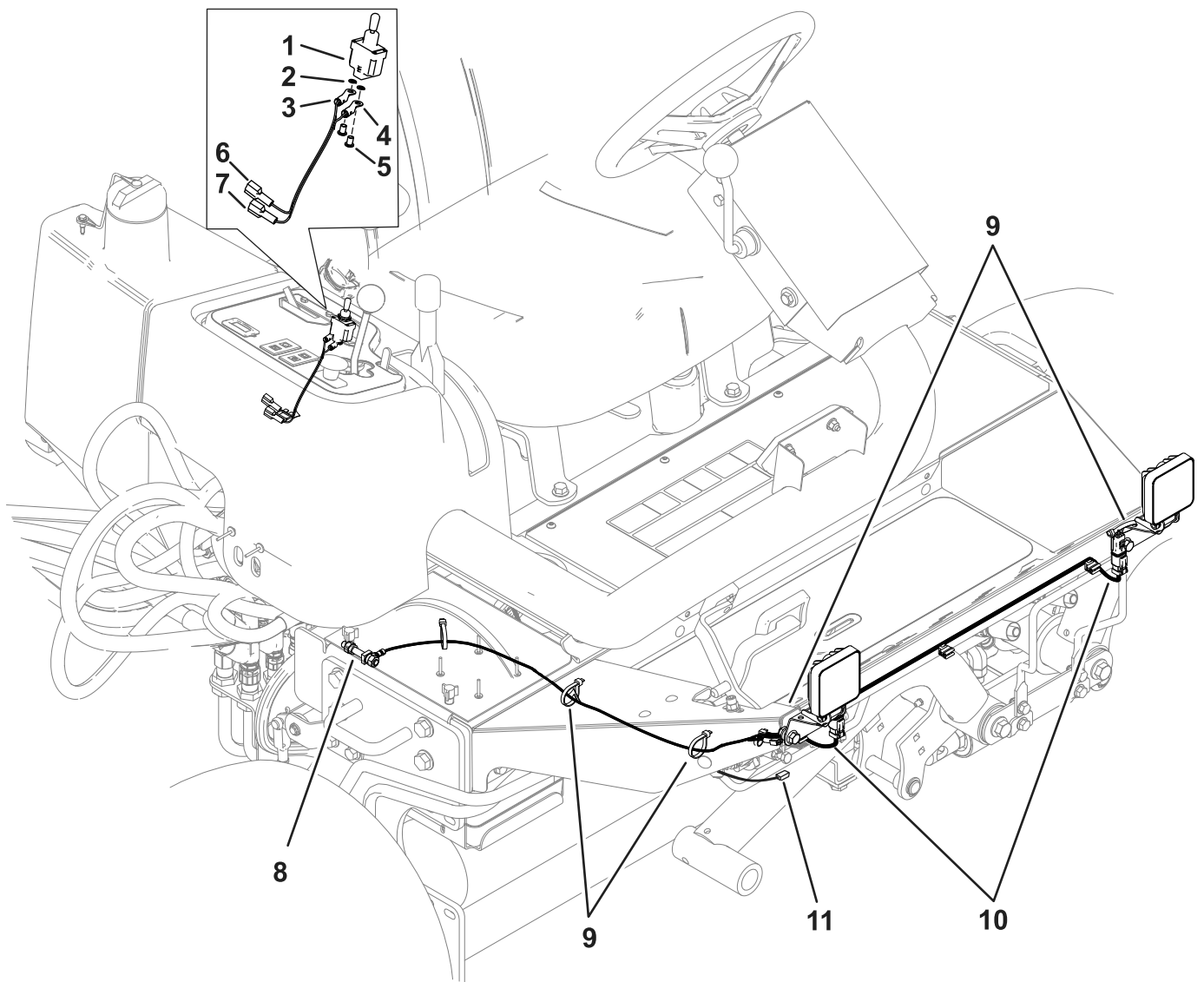


**Figure 5**

g312595

1. Switch

- 
6. Connect the 15.2 cm (6 inch) long harness with the blue and white terminals to the light switch as follows:
    - Connect the blue wired ring terminal to the center bottom terminal of the switch with the washer and screw (Figure 6).
    - Connect the white wired ring terminal to the remaining terminal of the switch with the washer and screw (Figure 6).



g369746

**Figure 6**

- |   |  |
|---|--|
| <ol style="list-style-type: none"> <li>1. Switch</li> <li>2. Washer</li> <li>3. White-wired ring terminal</li> <li>4. Blue-wired ring terminal</li> <li>5. Screw</li> <li>6. White wired male terminal</li> </ol> | <ol style="list-style-type: none"> <li>7. Blue wired male terminal</li> <li>8. Battery clamp/ground stud</li> <li>9. Cable tie</li> <li>10. Black and blue wired connectors (2)</li> <li>11. Blue wire with female terminal</li> </ol> |
|---|--|

- 
7. Connect the white wired male terminal on the harness to the white wired female terminal below the control panel on the main wire harness.
  8. Connect the blue wired male terminal on the harness to the blue wired female terminal below the control panel on the main wire harness.

9. Install the 10 amp fuse into the open receptacle in the fuse block (Figure 7).

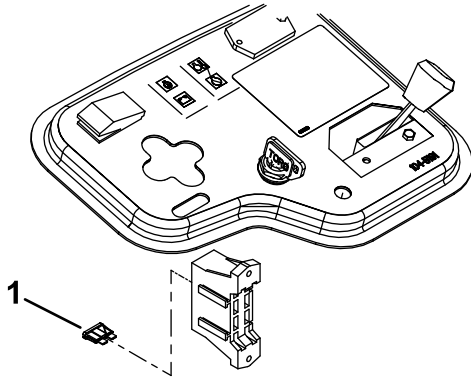


Figure 7

g312759

1. Fuse

- 
10. Install the control panel shroud.
  11. Remove and discard the existing negative (-) battery cable clamp bolt (Figure 8).

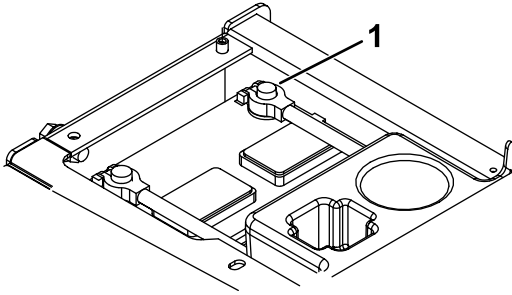


Figure 8

g312760

1. Negative (-) battery cable

- 
12. Loosely install the new battery clamp bolt/ground stud (Figure 9).

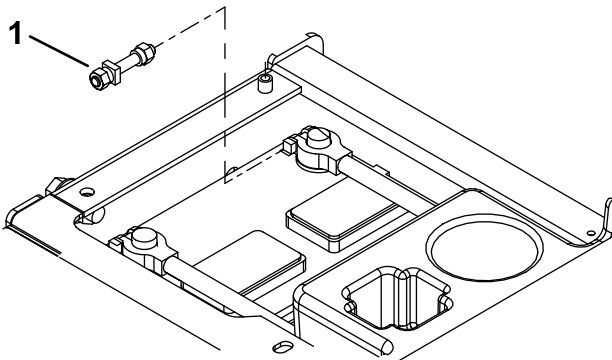


Figure 9

g312758

1. Battery clamp/ground stud

- 
13. Connect the black wired ring terminal to the ground stud.



**Count on it.**