



Dingo[®] 220
Compact Utility Loader
Model No. 22311—210000001 and Up

Parts Catalog

Ordering Replacement Parts

To order replacement parts, please supply: the part number, the quantity, and the description of each part desired.

Understanding Reference Numbers

Each identified part in an illustration has a reference number. The reference number for a part also appears in the parts list, along with other information about the part.

This catalog uses two special reference number formats, one to indicate parts in a service assembly and another to indicate the quantity of a given part in an illustration.

Service Assembly Reference Numbers

Parts in service assemblies have reference numbers in the form **a:b**. The **a** represents the reference number of the entire service assembly and the **b** represents a sequential number unique to each part within the service assembly.

For example, a wheel assembly might be identified by reference number **6**, the tire by **6:1**, the valve by **6:2**, and the wheel by **6:3**. When you order the assembly identified by reference number **6**, you receive all parts identified by reference numbers **6:1**, **6:2**, and **6:3**. However, you may also order any part individually.

Reference numbers of this type appear in illustrations and in part lists.

Reference Numbers Indicating Quantity

In an illustration, if a reference number indicates more than one part, the reference number has the form **nX y**. The **n** represents the quantity of the part, the **X** is the multiplication symbol, and the **y** represents the reference number.

For example, in an illustration, the reference number **2X 37** means that two of the parts identified by reference number **37** are indicated.

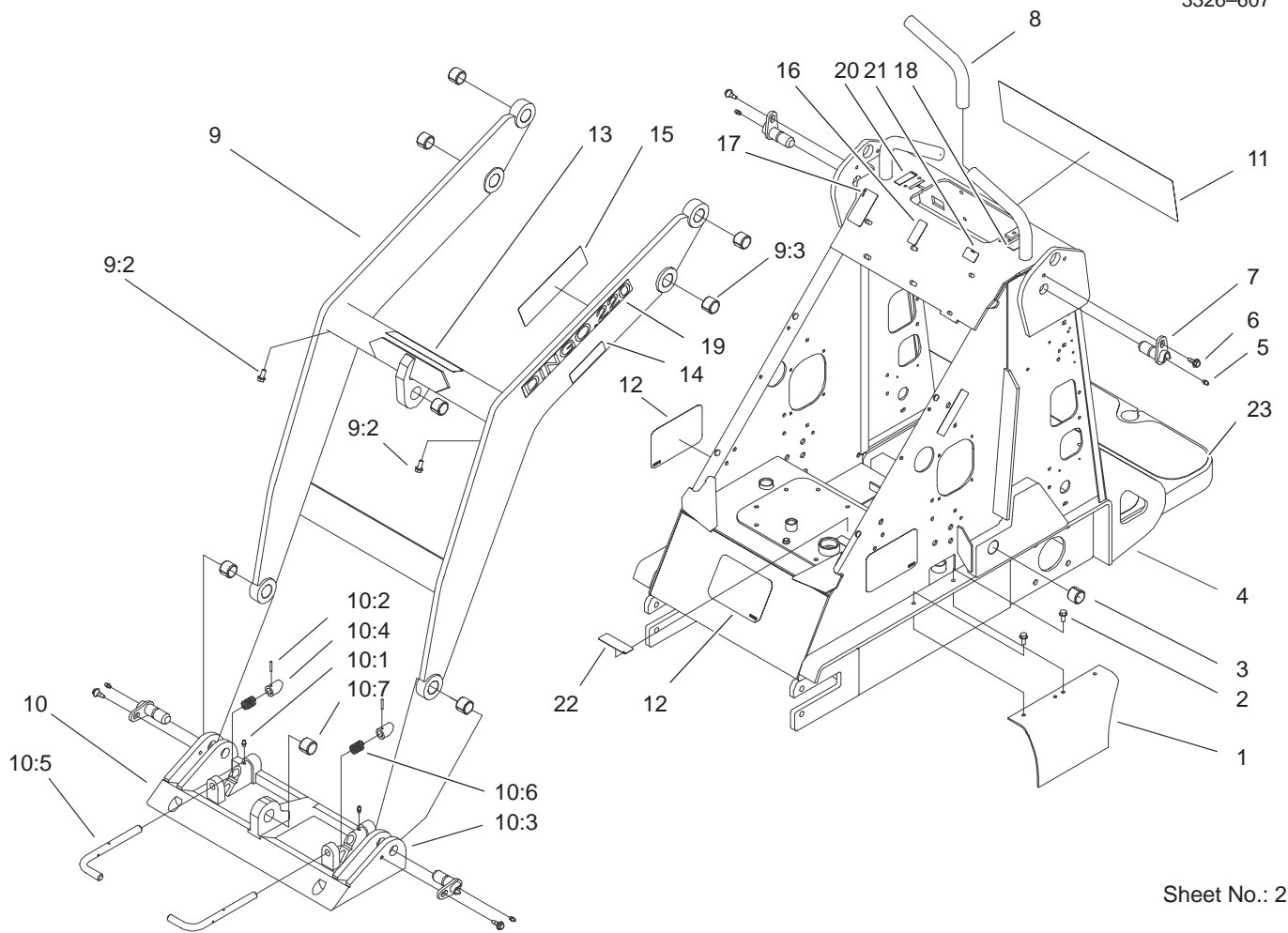
Contents

Description	Page	Description	Page
Frame and Loader Arm Assembly	3	Electrical Assembly	17
Front Wheel Assembly	4	Electrical Schematic	18
Rear Wheel Assembly	5	Hydraulic Schematic	19
Hydraulic Motor Assembly No. 99-3052	6	Crankshaft	20
Engine Assembly	7	Crankcase	21
Hydraulic Assembly	8	Oil Pan/Lubrication	22
Hydraulic Assembly (Continued)	9	Head/Valve/Breather	23
Hydraulic Valve Assembly No. 104-4221	10	Ignition/Electrical	24
Hydraulic Valve Assembly No. 99-3072	11	Blower Housing and Baffles	25
Hydraulic Valve Assembly No. 99-3077	12	Starting System	26
Hydraulic Traction Assembly	13	Fuel System	27
Hydraulic Valve Kit Assembly No. 104-7422 ..	14	Engine Controls	28
Hydraulic Cylinder Assembly	15	Air Intake/Filteration	29
Kit-Hydraulic Cylinder Assembly No. 100-4163	16	Exhaust	30

Part Description Abbreviations

Part descriptions in this catalog may include the following abbreviations.

Abbreviation	Meaning	Abbreviation	Meaning
AR	as required	HYD	hydraulic
ASM	assembly	INC	incorporated
CARR	carriage	LH	left hand
DEG	degrees	NI	nylon insert
FH	flat head	PPH	Phillips pan head
GA	gauge	PTH	Phillips truss head
HF	hex flange	PTO	power take off
HH	hex head	RH	right hand
HHF	hex head flange	SFH	slotted fillister head
HLH	hex lag head	SHH	slotted hex head
HJ	hex jam	SQH	square head
HOC	height-of-cut	SHWH	slotted hex washer head
HS	hex socket	SPH	slotted pan head
HSBH	hex socket button head	SRH	slotted round head
HSFH	hex socket flat head	STD	standard
HSH	hex socket head	TAP	self tapping
HWH	hex washer head	TTH	Torx truss head
HWHTF	hex washer head thread forming	WH	wing head



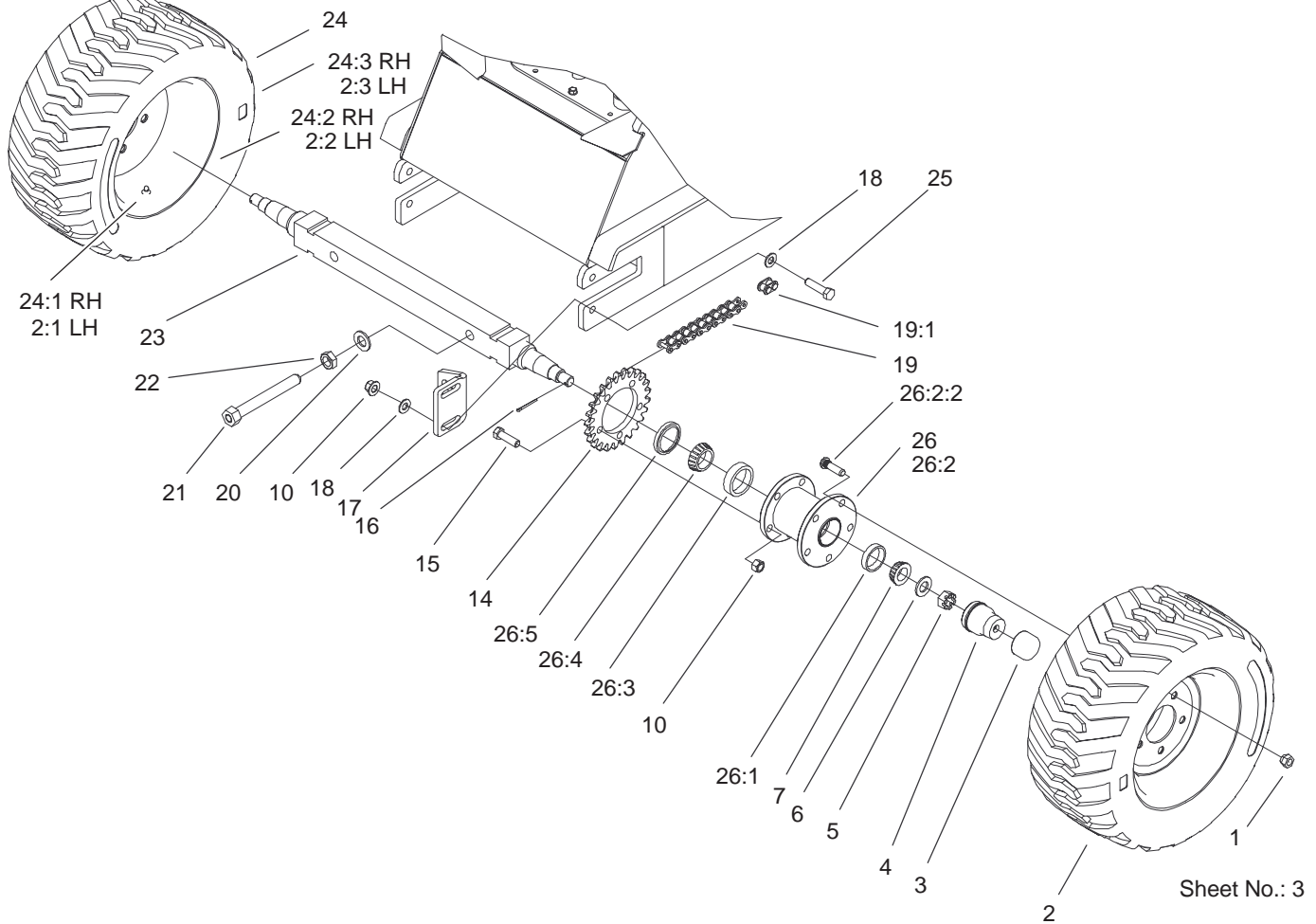
Sheet No.: 2

Frame and Loader Arm Assembly

Ref. No.	Part No.	Qty.	Description
1	98-4669-01	2	Cover-Chain
2	32144-70	6	Screw-HH
3	98-4871	9	Bushing-Tension
4	99-1355	1	Frame ASM
5	302-5	4	Fitting-Grease
6	99-5105	4	Bolt-Shoulder
7	99-1414	4	Pin-Pivot
8	98-4845	2	Grip-Cushion
9	100-8814	1	Loader ASM
9:2	32144-70	2	Screw-HH
9:3	98-4871	7	Bushing-Tension
10	98-4690	1	Quick Attach ASM
10:1	302-5	2	Fitting-Grease
10:2	32121-94	2	Pin-Special
10:3	98-4691-03	1	Mount-Attach, Quick
10:4	98-4692	2	Cam-Attach, Quick
10:5	100-3373	2	Pin
10:6	98-4694	2	Spring-Compression
10:7	98-4871	1	Bushing-Tension
11	99-1385	1	Decal-Panel, Instrument
12	62-5550	3	Decal-Toro
13	98-4682	1	Decal-Caution
14	100-6141	4	Decal-Pinch
15	98-9051	1	Decal-Danger
16	98-8235	1	Decal-Selector

Ref. No.	Part No.	Qty.	Description
17	98-4677	1	Decal-Power, Auxiliary
18	98-8219	1	Decal-Throttle
19	105-6229	2	Decal-Dingo 220
20	94-2551	1	Decal-Choke
21	98-8220	1	Decal-Limiter, Speed
22	105-6236	1	Decal-Oil, 10w30
23	98-9947	2	Tread-Foot

3326-607

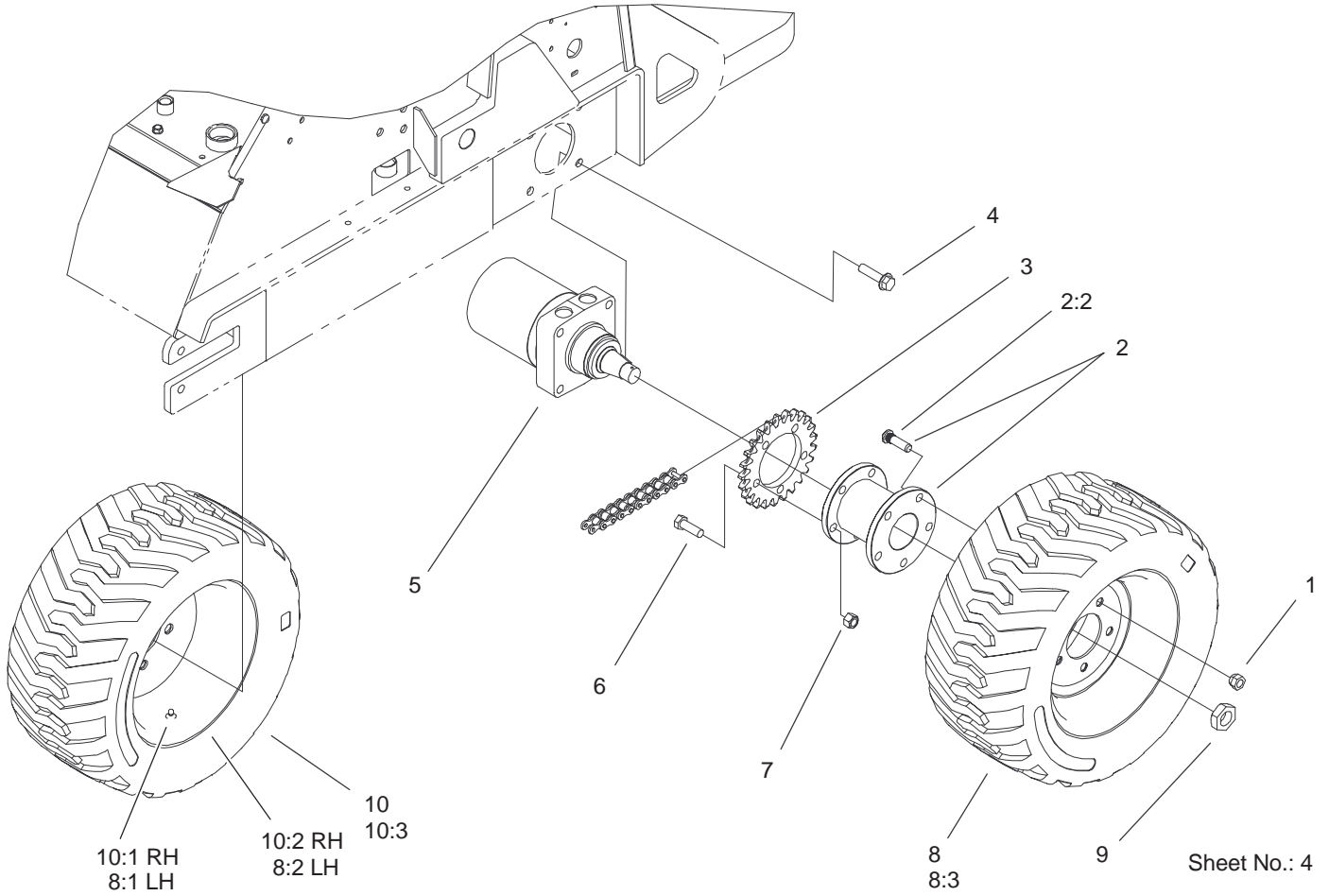


Front Wheel Assembly

Ref. No.	Part No.	Qty.	Description
1	242-50	10	Nut-Lug
2	98-2747	1	LH Wheel & Tire ASM
2:1	232-27	1	Stem-Valve
2:2	98-2748	1	Wheel
2:3	98-2749	1	Tire ,Loader Style
3	100-3809	2	Cap-Protector, Bearing
4	100-3769	2	Buddy-Bearing
5	32136-5	2	Nut-Slotted
6	3256-28	2	Washer-Flat
7	254-94	2	Bearing-Taper, Cone
10	3296-23	14	Nut-Lock, NI
14	98-9937	2	Sprocket - 25t
15	325-7	10	Screw-HH
16	3272-12	2	Pin-Cotter
17	99-5106-03	2	Bracket-Axle
18	3256-26	8	Washer-Flat
19	98-4906	2	Chain Roller
19:1	98-9089	1	Link - Connecting
20	3256-28	2	Washer-Flat
21	98-4706	2	Bolt-Tension
22	3218-7	2	Nut-Jam
23	98-4825	1	Axle Shaft
24	99-1447	1	RH Wheel & Tire ASM
24:1	232-27	1	Stem-Valve
24:2	98-2748	1	Wheel

Ref. No.	Part No.	Qty.	Description
24:3	98-2749	1	Tire ,Loader Style
25	325-8	4	Screw-HH
☆26		2	Hub-Front
26:1	254-72	1	Cup-Bearing, Tapered
26:2	100-9989	1	Hub-ASM, Front
26:2:2	10-6830	5	Stud-Type, Drive
26:3	254-107	1	Cup-Bearing, Tapered
26:4	254-106	1	Cone-Bearing, Tapered
26:5	98-4705	1	Seal-Bearing, Wheel

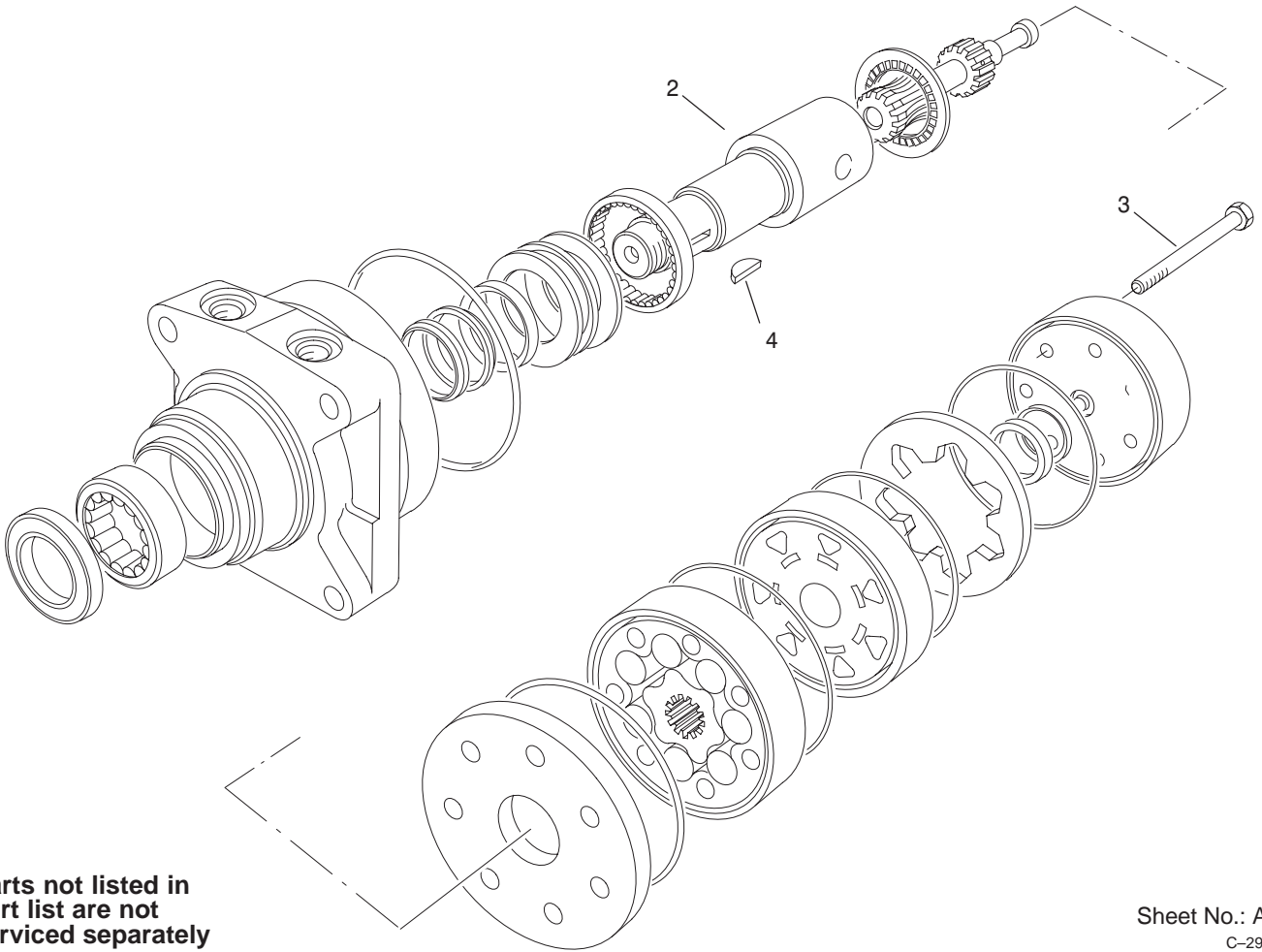
☆ Not serviced



Rear Wheel Assembly

Ref. No.	Part No.	Qty.	Description
1	242-50	10	Nut-Lug
2	100-9990	2	Rear Hub ASM
2:2	10-6830	5	Stud-Type, Drive
3	98-9937	2	Sprocket - 25t
4	3234-27	8	Screw-Flange
5	99-3052	2	Hydraulic Motor ASM
6	325-7	10	Screw-HH
7	3296-23	10	Nut-Lock, NI
8	98-2747	1	LH Wheel & Tire ASM
8:1	232-27	1	Stem-Valve
8:2	98-2748	1	Wheel
8:3	98-2749	1	Tire ,Loader Style
9	26-3790	2	Nut-Lock
10	99-1447	1	RH Wheel & Tire ASM
10:1	232-27	1	Stem-Valve
10:2	98-2748	1	Wheel
10:3	98-2749	1	Tire ,Loader Style

Ref. No.	Part No.	Qty.	Description



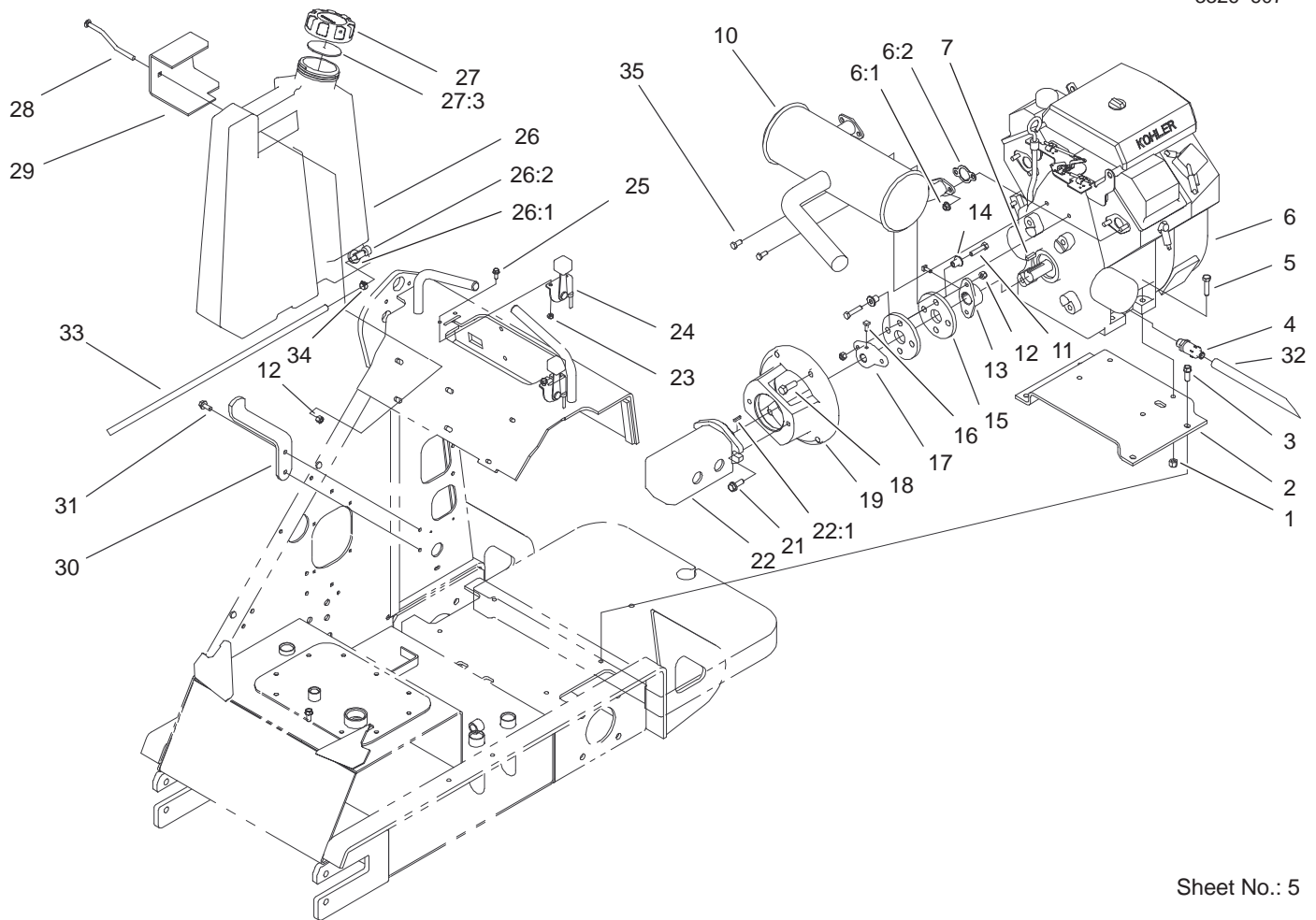
Parts not listed in part list are not serviced separately

Sheet No.: A1
C-2980

Hydraulic Motor Assembly No. 99-3052

Ref. No.	Part No.	Qty.	Description
1	94-8178	1	Kit-Seal
2	99-3090	1	Coupling-Shaft
3	99-3091	7	Screw-Cap, HH
4	3257-42	1	Key-Woodruff

Ref. No.	Part No.	Qty.	Description



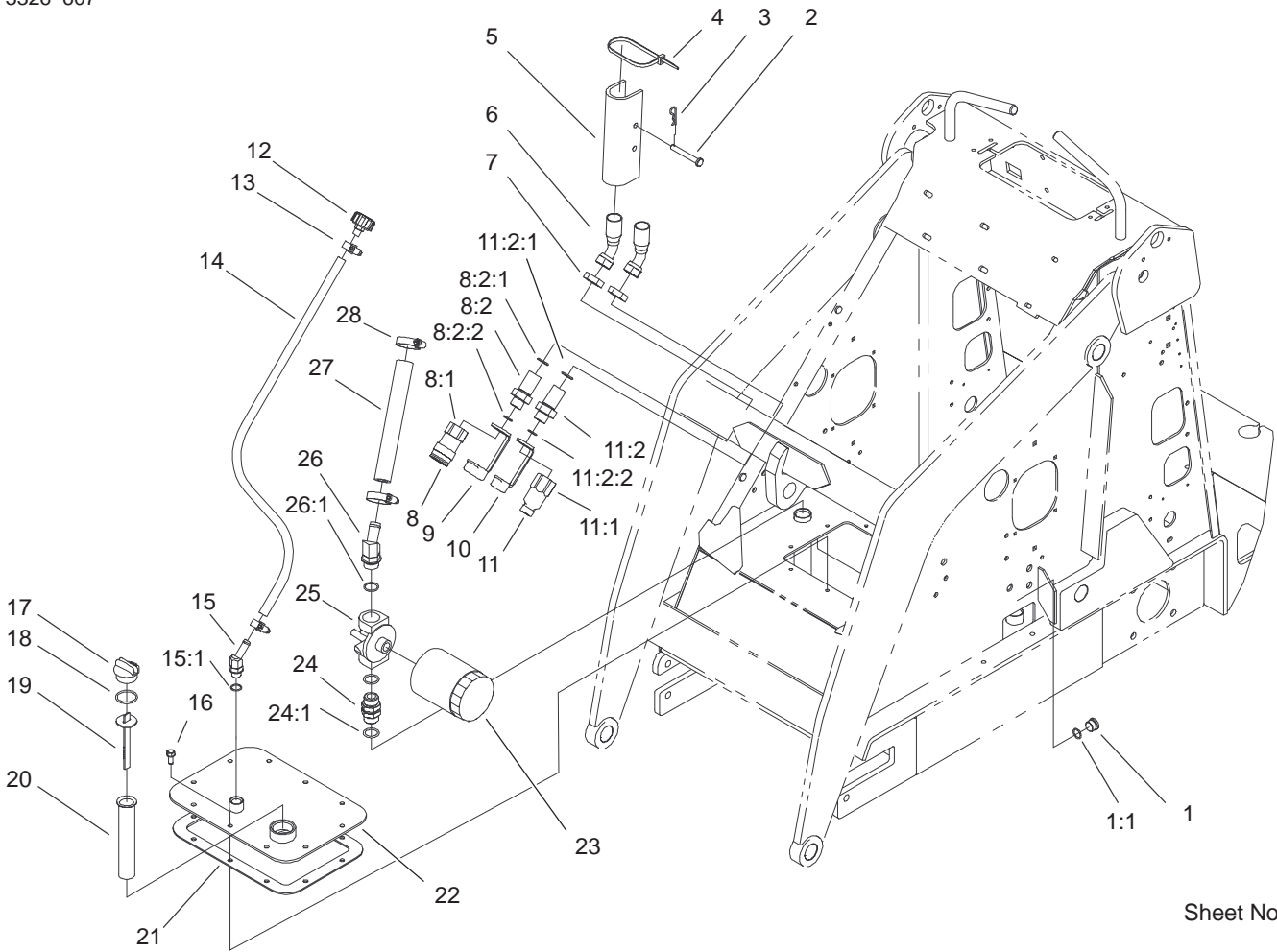
Sheet No.: 5

Engine Assembly

Ref. No.	Part No.	Qty.	Description
1	3296-39	4	Nut-Lock, NI
2	98-4666-03	1	Mount-Engine
3	95-1726	4	Screw-Taptite W/Patch
4	92-6877	1	Valve-Drain, Oil
5	323-9	4	Screw-HH
6		1	Engine-Kohler Ch20s Ps-64667
6:1	92-6780	4	Nut-HF
6:2	93-0350	2	Gasket-Exhaust
7	10-7070	1	Key-Square
10	100-1711	1	Muffler-Kohler
11	322-7	4	Screw-HH
12	3296-29	5	Nut-Lock, NI
13	27-1960	1	Hub-Engine
14	71-4411	4	Spacer
15	44-2230	2	Coupling-Rubber
16	3241-6	4	Screw-SQH
17	98-4701	1	Hub-Pump
18	324-6	4	Screw-HH
19	98-2751-03	1	Mount-Pump
21	66-9300	2	Screw-HF
22	98-4702	1	Pump-Gear, Tandem
22:1	98-4700	1	Key-Square
*22:2	99-1353	1	Kit-Seal, Pump
23	3296-42	4	Nut-Lock, NI

Ref. No.	Part No.	Qty.	Description
24	85-9310	2	Control-Choke / Throttle
25	3234-33	4	Screw-HHF
26	105-4052	1	RH Fuel Tank ASM
26:1	46-6560	1	Bushing
26:2	104048	1	Valve-Fuel
27	104-7418	1	Cap-Fuel, Gas
27:3	104-7420	1	Gasket-Vented
28	98-4657	1	Bolt-Mount
29	98-4655-03	1	Plate-Mount
30	98-4656-03	1	Mount-Bottom, Tank
31	32144-70	2	Screw-HH
32	98-4667	1	Hose-Drain, Oil
33	98-4668	1	Line - Fuel
34	92-2379	2	Clamp-Hose
35	33114-020	2	Screw-HH

* Not illustrated

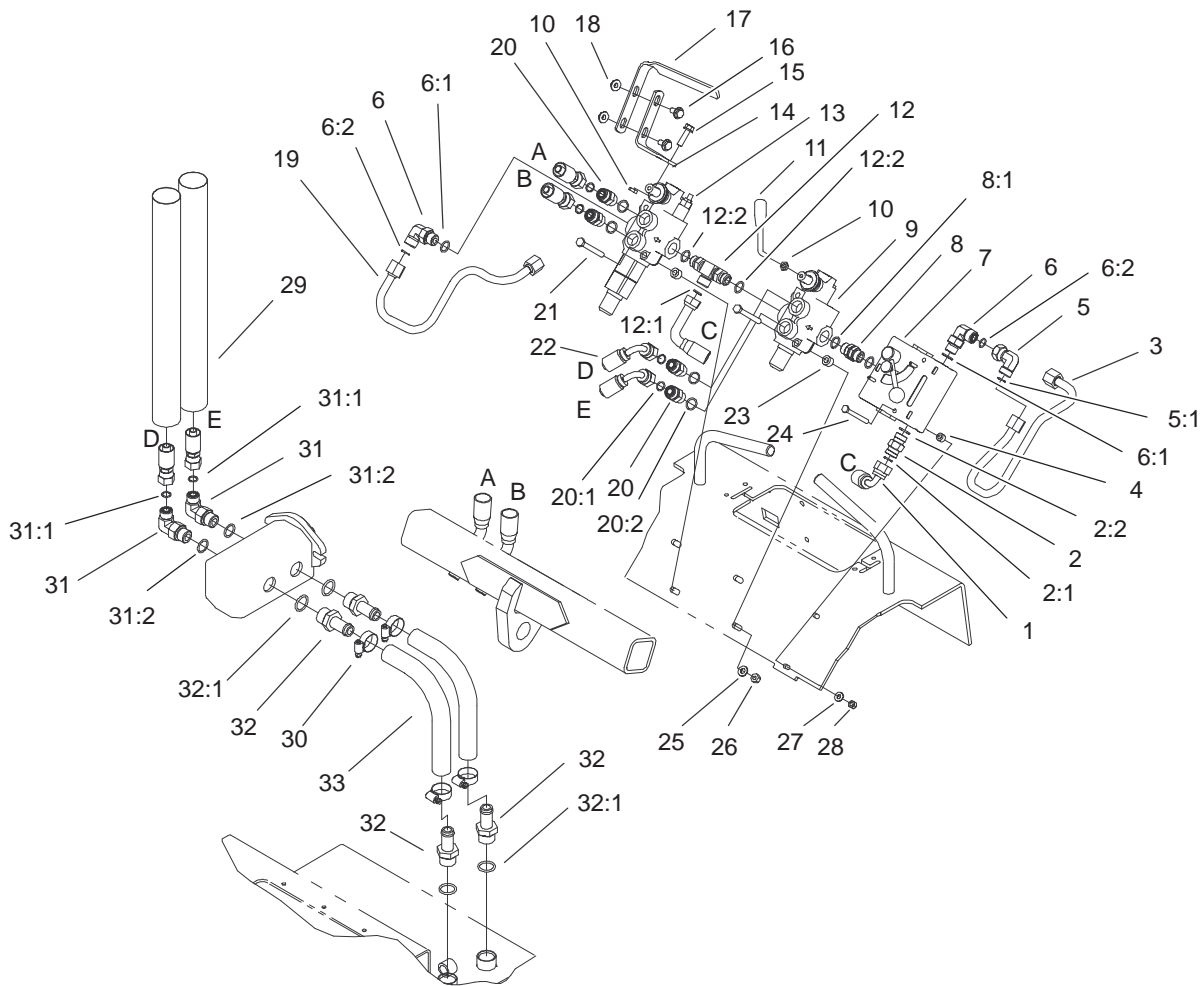


Sheet No.: 6

Hydraulic Assembly

Ref. No.	Part No.	Qty.	Description
1	353-988	1	Plug-Hex, Hollow
1:1	237-79	1	O-Ring
2	283-52	2	Pin-Clevis
3	3290-467	2	Pin-Hair
4	3290-379	9	Tie-Cable
5	98-4675-01	2	Lock-Cylinder
6	100-8817	2	Hose-Aux
7	340-74	2	Locknut-Bulkhead
8	100-4747	1	Bulkhead Coupler ASM
8:1	96-1275	1	Coupler-Face, Flush
8:2	100-4236	1	Fitting-Adapter, Bulkhead
8:2:1	237-65	1	O-Ring
8:2:2	237-80	1	O-Ring
9	100-8816	1	Cap-Dust, Coupler
10	100-8815	1	Cap-Dust, Nipple
11	100-4748	1	Bulkhead Nipple ASM
11:1	96-1276	1	Nipple-Face, Flush
11:2	100-4236	1	Fitting-Adapter, Bulkhead
11:2:1	237-65	1	O-Ring
11:2:2	237-80	1	O-Ring
12	68-6150	1	Breather-Air
13	2412-36	2	Clamp-Hose
14	98-2708	1	Hose-Vent

Ref. No.	Part No.	Qty.	Description
15	354-126	1	Fitting-HYD, 45°
15:1	237-79	1	O-Ring
16	98-9940	10	Screw
17	93-7498	1	Plug-Plastic
18	237-123	1	O-Ring
19	100-2097	1	Dipstick-Oil
20	61-2790	1	Filter-Screen
21	98-9927	1	Gasket-Cover
22	98-2709	1	Cover
23	54-0110	1	Filter-Oil, Transmission
24	98-9906	1	Fitting-Thread, Straight
24:1	237-81	2	O-Ring
25	92-5821	1	Filter Head ASM
26	354-127	1	Elbow-45°
26:1	237-81	1	O-Ring
27	100-9988	1	Hose-HYD
28	2412-129	2	Clamp-Hose



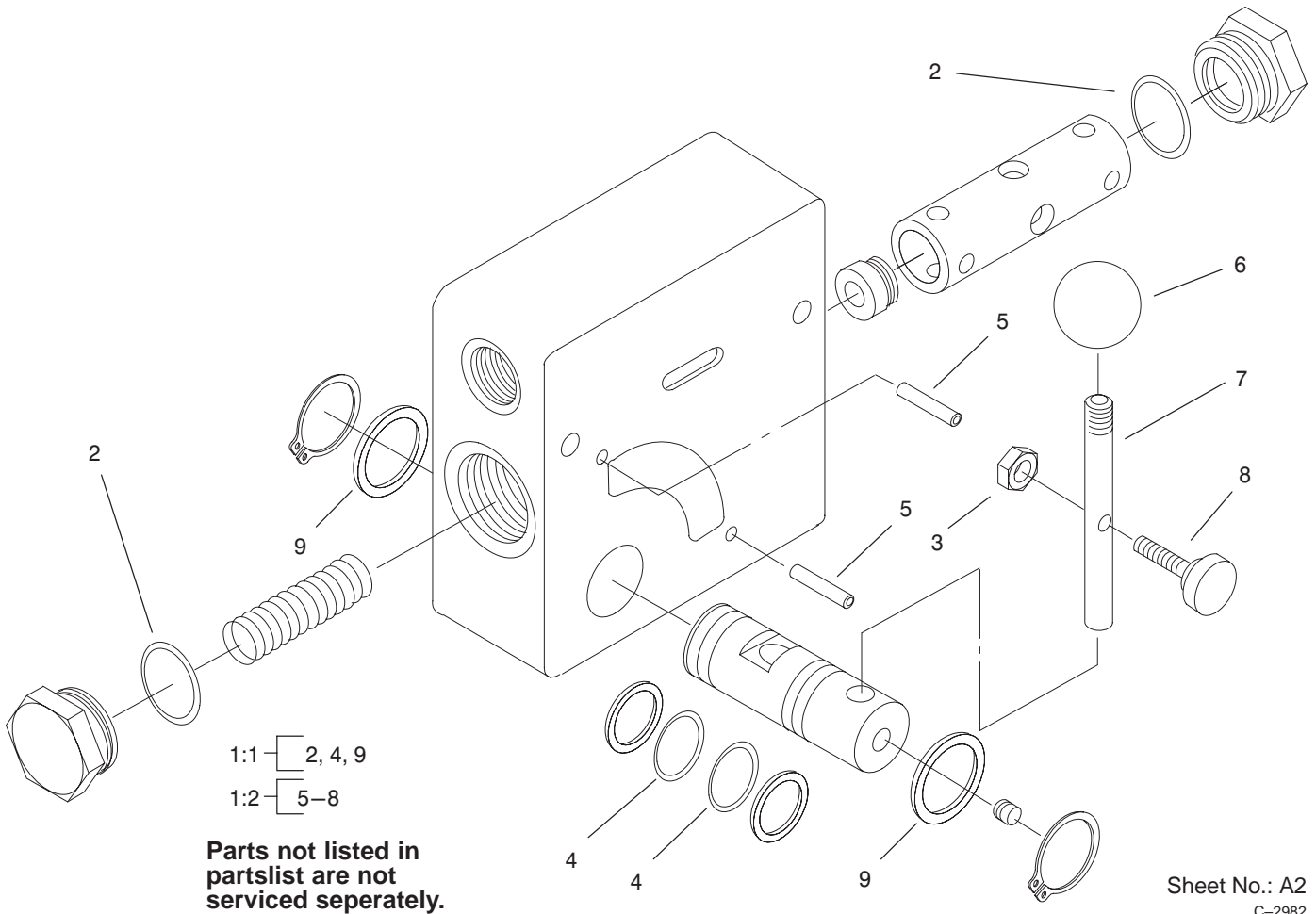
Sheet No.: 7

Hydraulic Assembly (Continued)

Ref. No.	Part No.	Qty.	Description
1	98-4744	1	Hose ASM
2	98-4735	1	Valve-Check, HYD
2:1	237-30	1	O-Ring
2:2	237-79	1	O-Ring
3	98-9917	1	Tube-HYD
4	98-4799	2	Tube-Spacer
5	94-6031	1	Fitting-HYD
5:1	237-30	1	O-Ring
6	340-98	2	Fitting-HYD, 90°
6:1	237-79	1	O-Ring
6:2	237-30	1	O-Ring
7	104-4221	1	Kit-Valve, HYD
8	95-3209	1	Fitting-Thread, Straight
8:1	237-79	2	O-Ring
9	99-3072	1	Valve-Selector
10	42-9580	2	Nut-Hex
11	98-4729	1	Lever-Valve
12	98-9079	1	Adapter-Tee, Adjustable
12:1	237-30	1	O-Ring
12:2	237-79	2	O-Ring
13	99-3077	1	Valve-HYD, Auxiliary
14	99-1376	1	Mount - Control
15	33104-030	1	Screw-HHF
16	3234-5	2	Screw

Ref. No.	Part No.	Qty.	Description
17	98-9090	1	Grip-Control
18	32128-44	2	Nut
19	98-4724	1	Tube-HYD
20	340-4	4	Adapter
20:1	237-30	1	O-Ring
20:2	237-79	1	O-Ring
21	322-13	4	Screw-HH
22	98-4747	2	Hose-HYD, Pressure, High
23	98-4695	4	Tube-Spacer
24	321-14	2	Screw-HH
25	3256-23	4	Washer-Flat
26	3296-29	4	Nut-Lock, NI
27	3256-22	2	Washer-Flat
28	3296-42	2	Nut-Lock, NI
29	100-8818	2	Sleeve-Guard, Hose
30	2412-129	4	Clamp-Hose
31	340-105	2	Fitting-90°
31:1	237-80	1	O-Ring
31:2	237-30	1	O-Ring
32	354-73	4	Fitting
32:1	237-81	1	O-Ring
33	98-2713	2	Hose-Suction, HYD
*34	99-5349	2	Spring-Compression

* Not illustrated



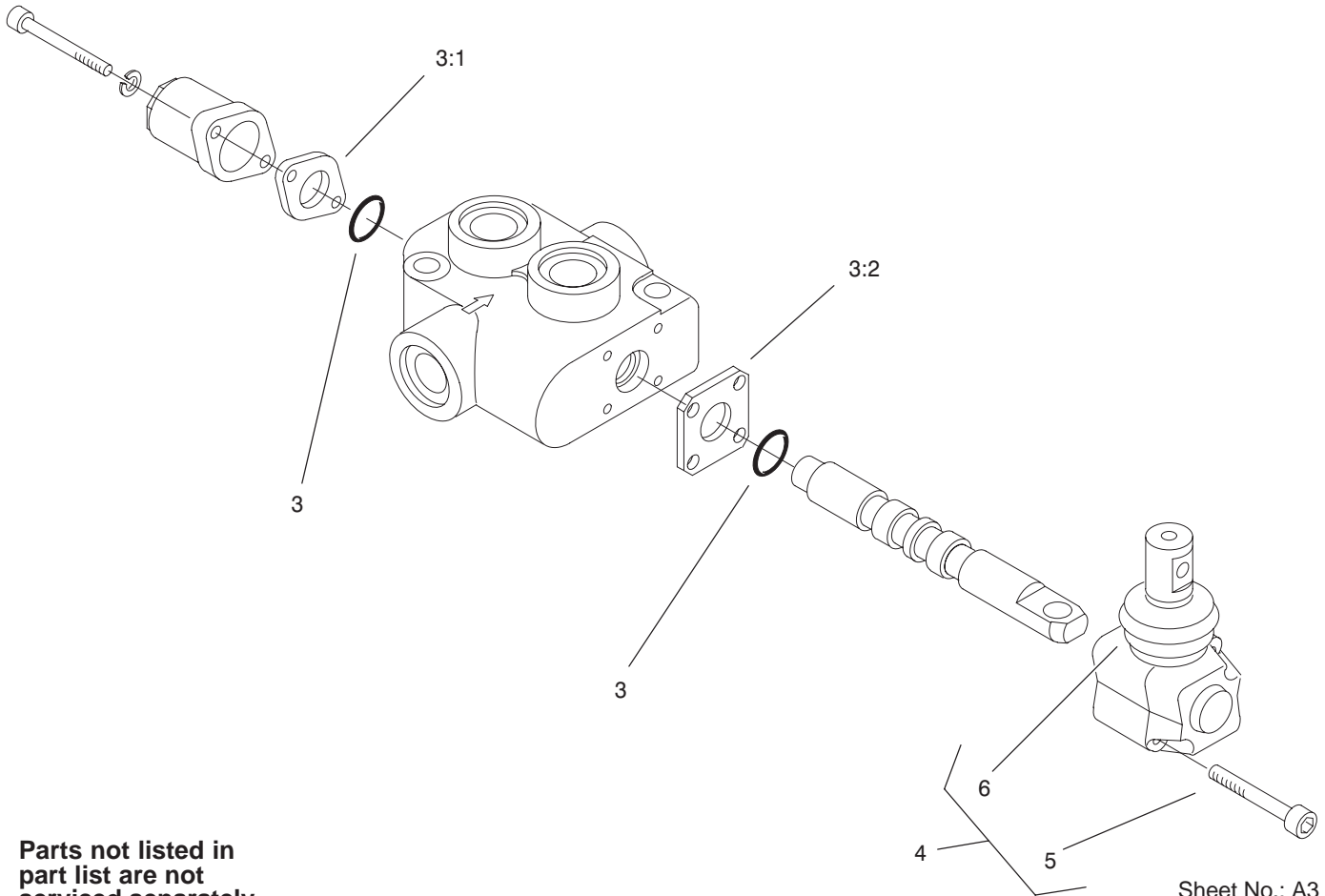
Sheet No.: A2
 C-2982

Hydraulic Valve Assembly No. 104-4221

Ref. No.	Part No.	Qty.	Description
☆1		1	Valve-Flow, Hydraulic
1:1	104-4231	1	Kit-Seal, Valve
1:2	98-9098	1	Kit-Hardware, Handle
3	3296-27	1	Nut-Lock NI

Ref. No.	Part No.	Qty.	Description

☆ Not serviced



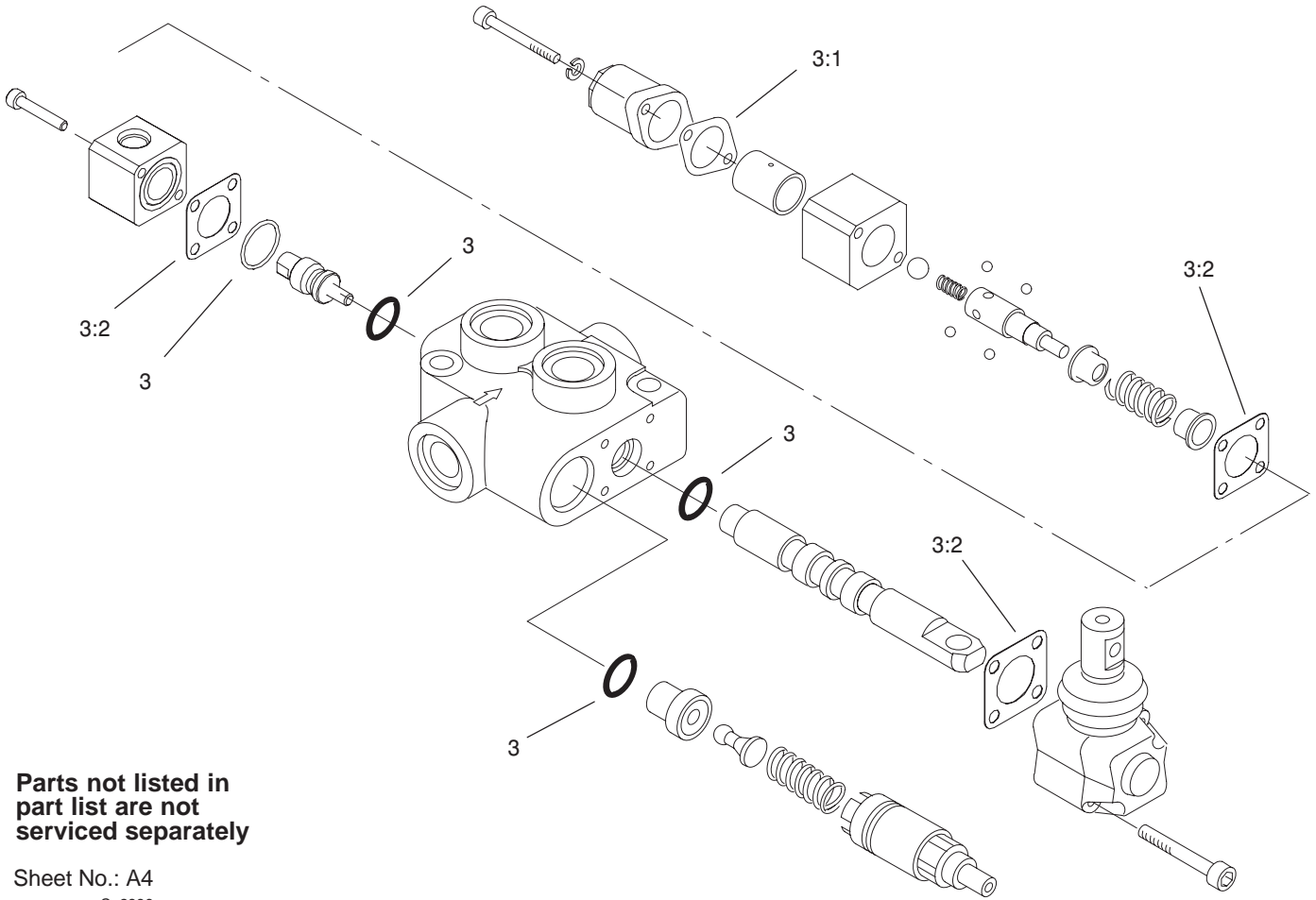
Parts not listed in
part list are not
serviced separately

Sheet No.: A3
C-2835

Hydraulic Valve Assembly No. 99-3072

Ref. No.	Part No.	Qty.	Description
3	99-4391	1	Kit-Seal
3:1	99-3074	1	Gasket
3:2	99-3075	3	Gasket

Ref. No.	Part No.	Qty.	Description



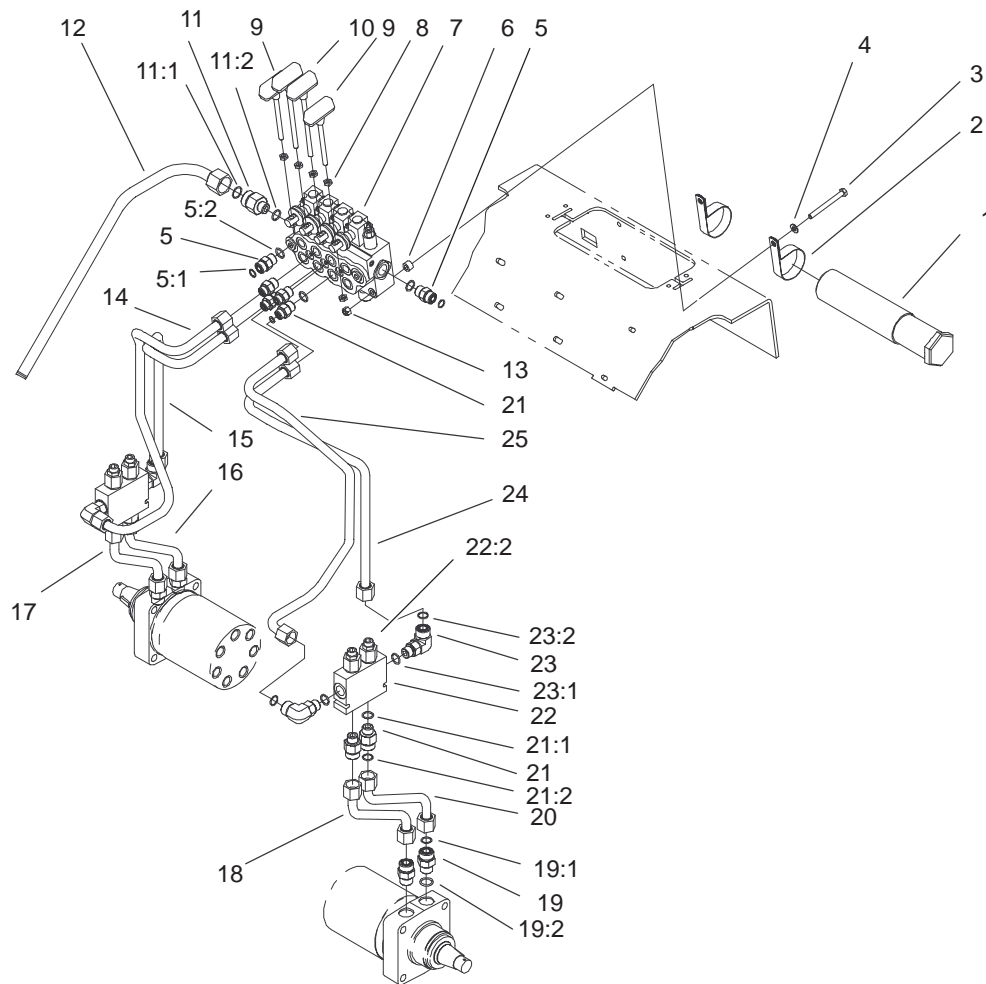
Parts not listed in
part list are not
serviced separately

Sheet No.: A4
C-2836

Hydraulic Valve Assembly No. 99-3077

Ref. No.	Part No.	Qty.	Description
3	99-4391	1	Kit-Seal
3:1	99-3074	1	Gasket
3:2	99-3075	3	Gasket

Ref. No.	Part No.	Qty.	Description
----------	----------	------	-------------



Sheet No.: 8

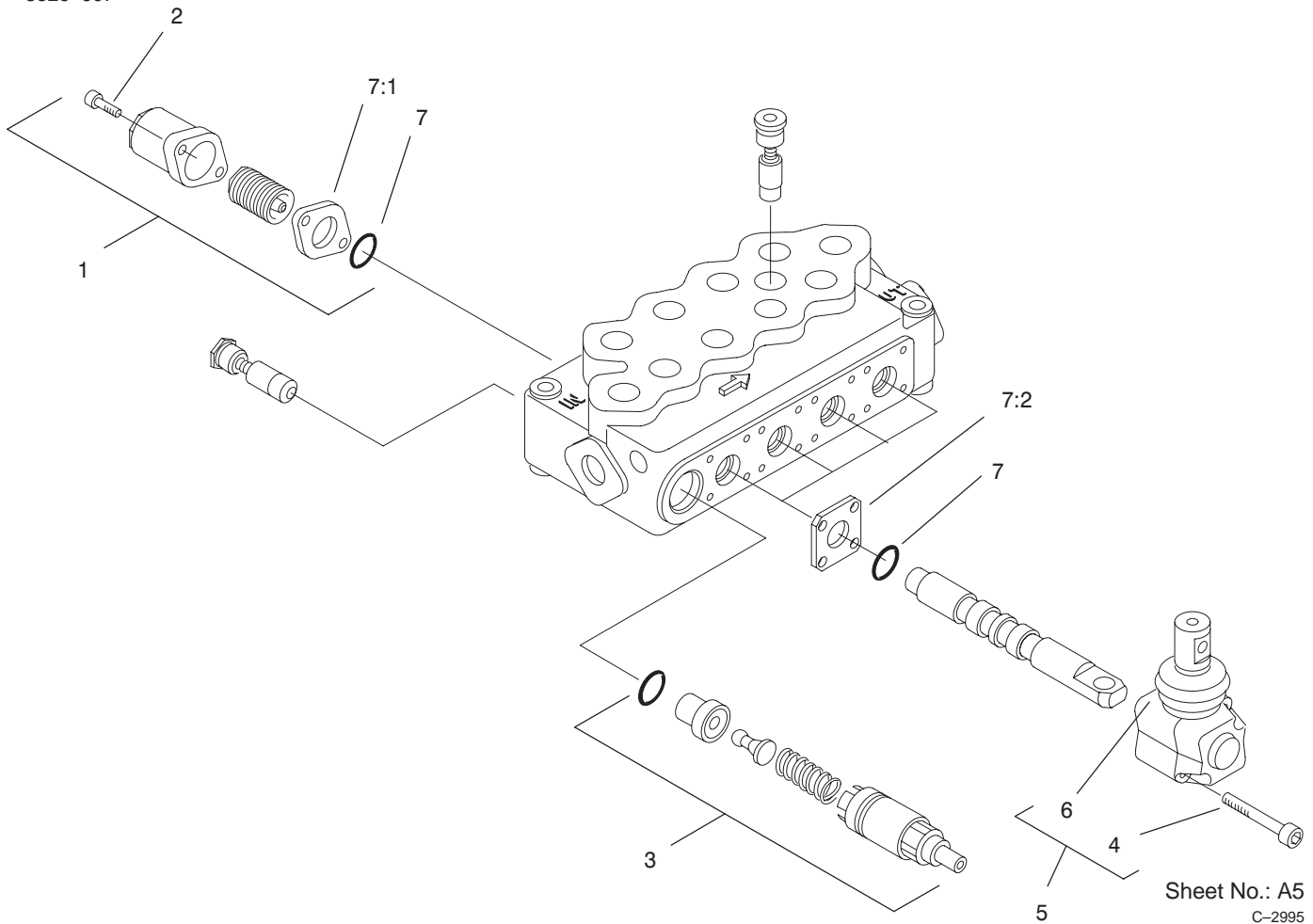
Hydraulic Traction Assembly

Ref. No.	Part No.	Qty.	Description
1	74-0720	1	Tube-Manual
2	2412-133	2	R-Clamp
3	322-20	3	Screw-HH
4	3256-23	3	Washer-Flat
5	340-4	2	Adapter
5:1	237-30	1	O-Ring
5:2	237-79	1	O-Ring
6	98-4695	3	Tube-Spacer
7	104-7422	1	Kit-Valve, 4-Spool, HYD
8	42-9580	8	Nut-Hex
9	98-4671	2	Cylinder Handle ASM
10	98-4670	2	Drive Handle ASM
11	98-9921	1	Fitting-Thread, Straight
11:1	237-145	1	O-Ring
11:2	237-79	1	O-Ring
12	99-3021	1	Tube-HYD
13	3296-29	3	Nut-Lock, NI
14	98-4737	1	Tube-HYD
15	98-4736	1	Tube-HYD
16	98-4740	1	Tube-HYD
17	98-4741	1	Tube-HYD
18	98-4743	1	Tube-HYD
19	340-7	4	Adapter
19:1	237-65	1	O-Ring

Ref. No.	Part No.	Qty.	Description
19:2	237-80	1	O-Ring
20	98-4742	1	Tube-HYD
21	340-155	8	Fitting-HYD
21:1	237-79	1	O-Ring
21:2	237-151	1	O-Ring
22	98-9050	2	Valve-Counterbalance
*22:1	98-2712	1	Kit-Seal, Valve
22:2	99-3271	2	Valve-Cartridge
*22:2:1	98-2712	1	Kit-Seal, Valve
23	340-153	4	Fitting-HYD
23:1	237-79	1	O-Ring
23:2	237-151	1	O-Ring
24	98-4738	1	Tube-HYD
25	98-4739	1	Tube-HYD

* Not illustrated

3326-607

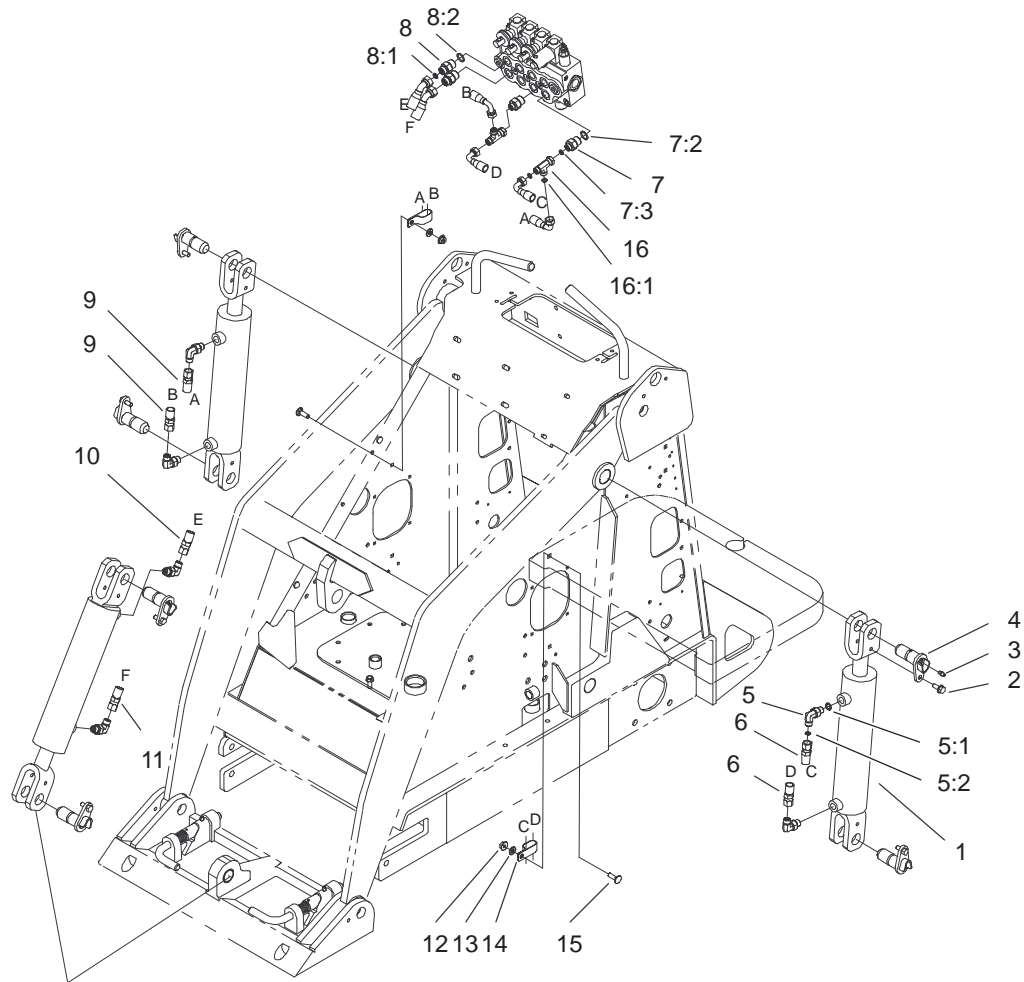


Sheet No.: A5
C-2995

Hydraulic Valve Kit Assembly No. 104-7422

Ref. No.	Part No.	Qty.	Description
1	100-8800	4	Standard Spring ASM
1	100-8801	4	Kit-Spring, High Force
2	100-8802	8	Screw-Cap, End
3	100-8805	1	Valve-Relief
4	100-8806	8	Screw-Operator
5	100-8807	4	Operator ASM
6	100-8829	4	Boot-Operator
7	99-4390	1	Kit-Seal, Sd5
7:1	99-3074	4	Gasket
7:2	99-3075	8	Gasket

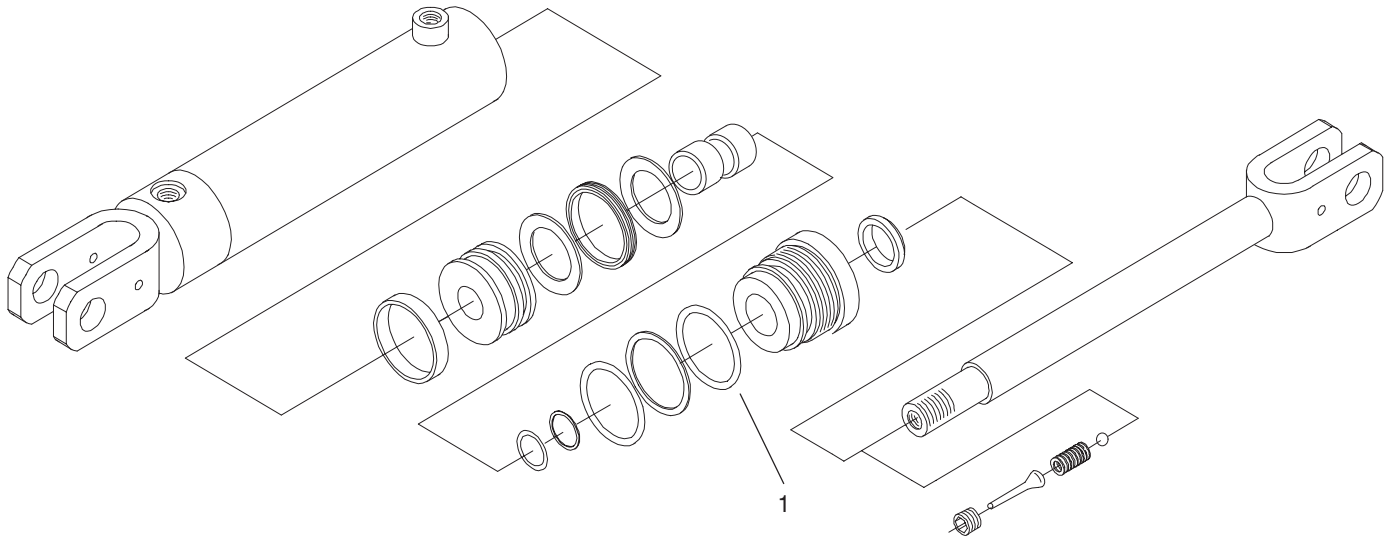
Ref. No.	Part No.	Qty.	Description



Sheet No.: 9

Hydraulic Cylinder Assembly

Ref. No.	Part No.	Qty.	Description	Ref. No.	Part No.	Qty.	Description
1	100-4163	3	Kit-Cylinder, Hydraulic				
2	99-5105	6	Bolt-Shoulder				
3	302-5	6	Fitting-Grease				
4	99-1414	6	Pin-Pivot				
5	340-82	6	Adapter				
5:1	237-42	2	O-Ring				
5:2	237-21	2	O-Ring				
6	98-4748	2	Hose-Pressure, Low				
7	340-133	2	Adapter				
7:2	237-79	1	O-Ring				
7:3	237-21	1	O-Ring				
8	340-3	2	Adapter				
8:1	237-22	1	O-Ring				
8:2	237-79	1	O-Ring				
9	98-4725	2	Hose-HYD				
10	98-4727	1	Hose-HYD				
11	98-4726	1	Hose-HYD				
12	3296-29	2	Nut-Lock, NI				
13	3256-23	2	Washer-Flat				
14	2412-137	2	Clamp-Tube				
15	3230-2	2	Screw-CARR				
16	340-151	2	Fitting				
16:1	237-75	3	O-Ring				



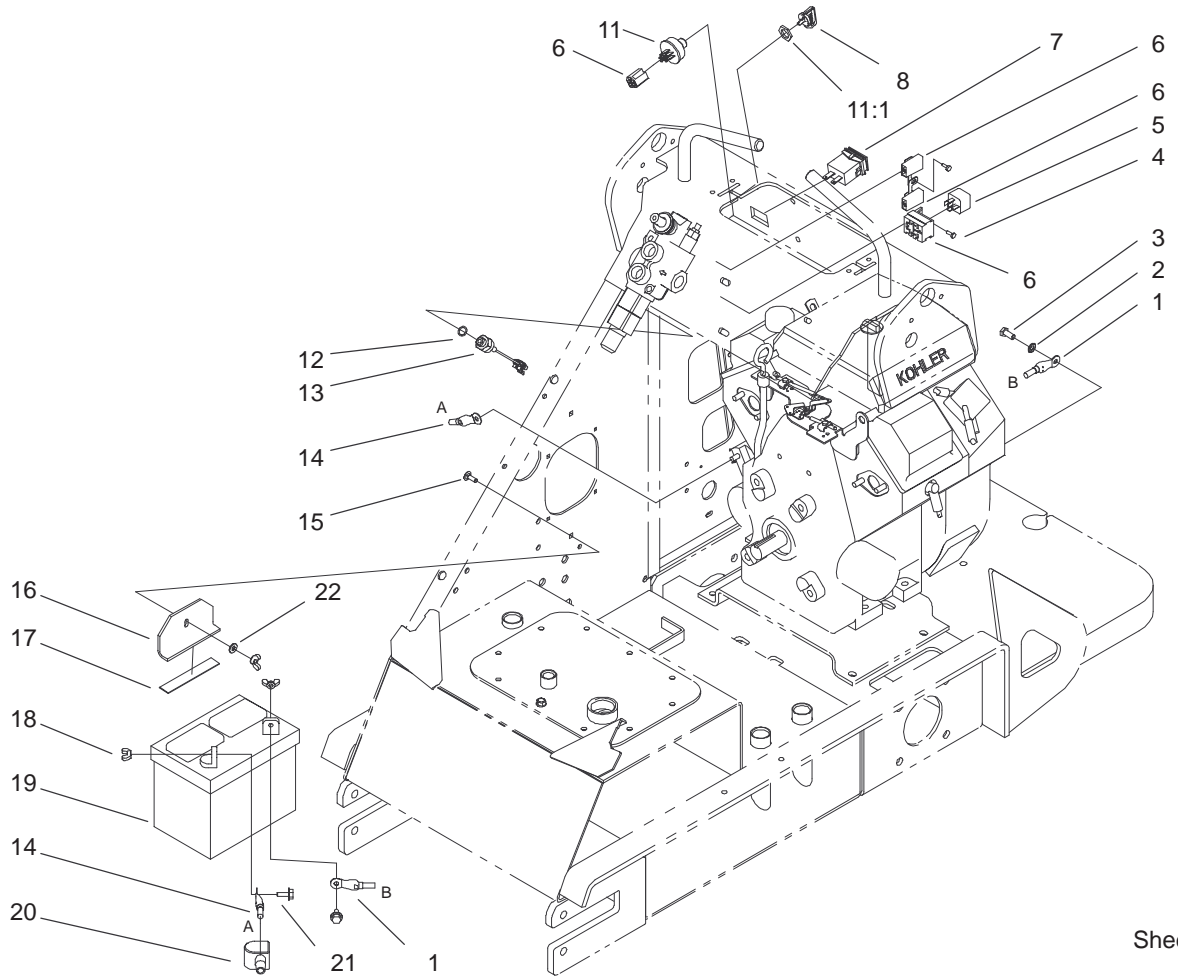
Parts not listed in
part list are not
serviced separately

Sheet No.: A6
C-2824

Kit-Hydraulic Cylinder Assembly No. 100-4163

Ref. No.	Part No.	Qty.	Description
1	99-3065	1	Kit-Seal, Hydraulic Cylinder

Ref. No.	Part No.	Qty.	Description
----------	----------	------	-------------



Sheet No.: 11

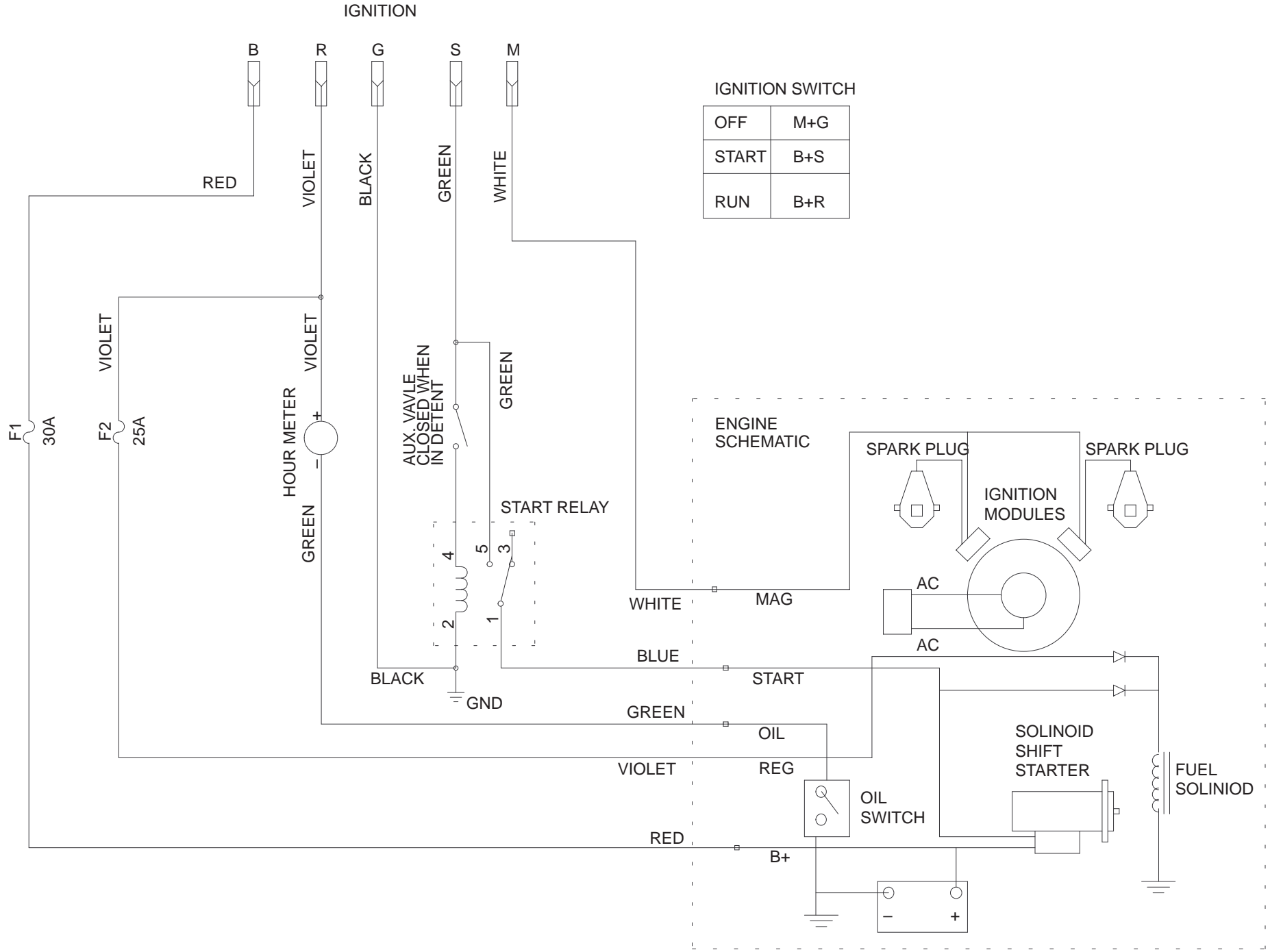
Electrical Assembly

Ref. No.	Part No.	Qty.	Description
1	111074	1	Cable-Black
2	3255-8	1	Washer-Lock/Ext
3	33114-020	1	Screw-HH
4	32144-87	2	Screw-Forming, Thread
5	98-7249	1	Relay
6	98-4650	1	Harness-Electrical
7	94-4208	1	Hourmeter
8	63-8360	2	Key-Ignition
11	116338	1	Key Switch ASM
11:1	101884	1	Nut
12	237-42	1	O-Ring
13	72-4310	1	Switch
14	92-6989	1	Wire
15	3229-2	1	Screw-CARR
16	98-4658-03	1	Clamp - Battery
17	94-9566	1	Pad-Footrest
18	32103-22	3	Nut-Wing
19	94-1867	1	Battery
20	77-0981	1	Boot-Terminal
21	3234-4	2	Screw-HHF
22	3256-22	1	Washer-Flat

Ref. No.	Part No.	Qty.	Description

Electrical Schematic

3326-607

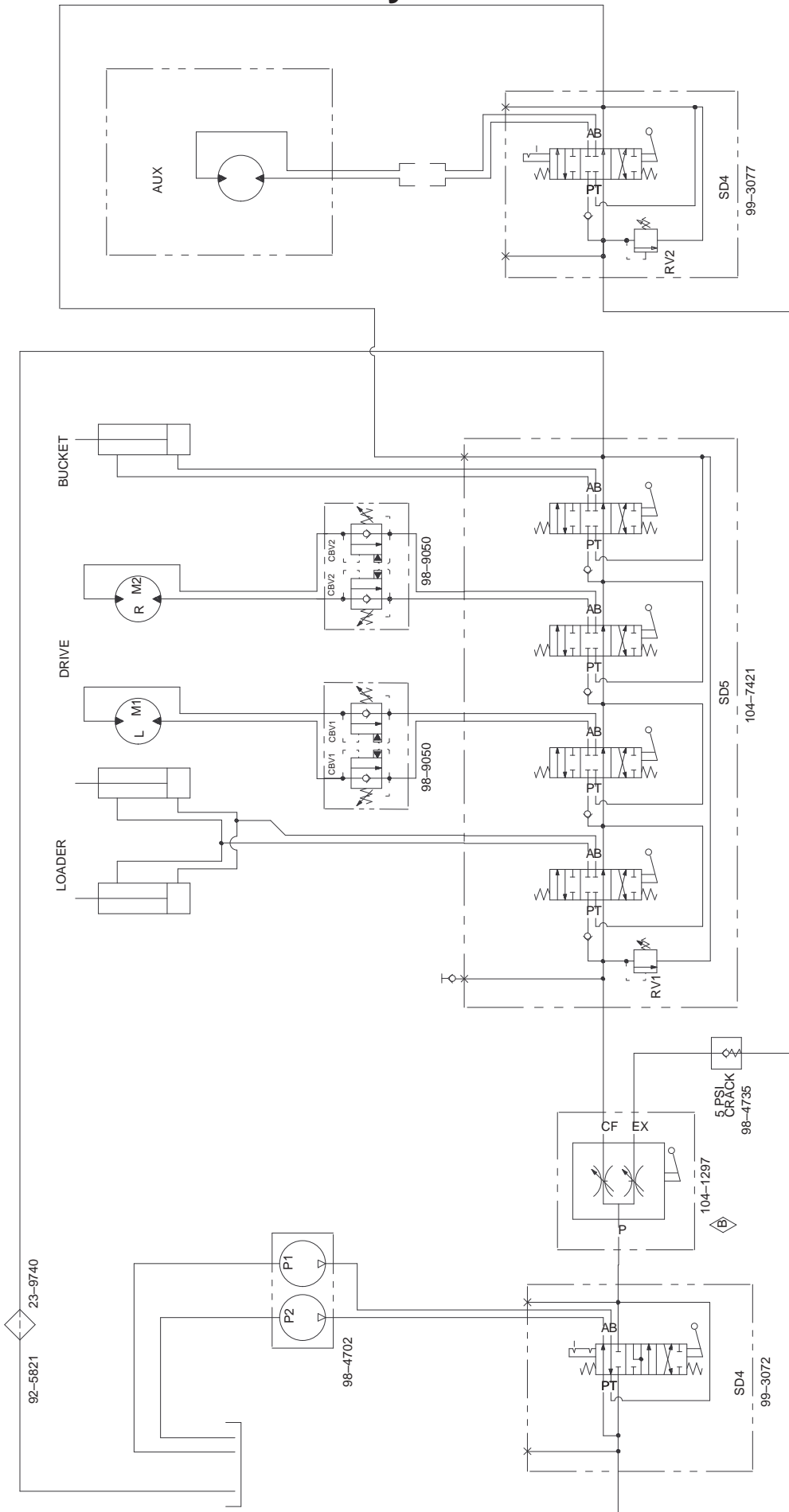


IGNITION SWITCH

OFF	M+G
START	B+S
RUN	B+R

ENGINE SCHEMATIC

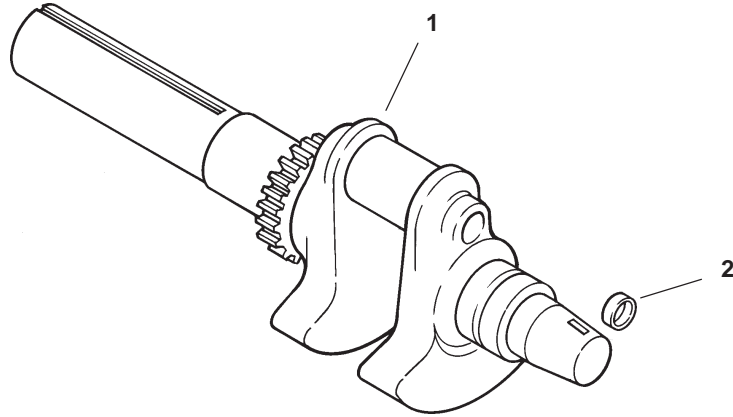
Hydraulic Schematic



DISPLACEMENT AND PRESSURE CHART

COMPONENT	DISPLACEMENT		PRESSURE		FLOWRATE*	
	CU IN/REV	CU CM/REV	PSI	BARS	GPM	LPM
P1	0.55	CU IN	9	CC	8.4	31.8
P2	0.24	CU IN	4	CC	3.7	14.0
M1	29.1	CU IN	476	CC		
M2	29.1	CU IN	476	CC		
RV1			3000	PSI		
RV2			3000	PSI		
CBV1			1000	PSI		
CBV2			1000	PSI		

* FLOWRATE CALCULATED AT 3600 RPM AND 98% EFFICIENCY.

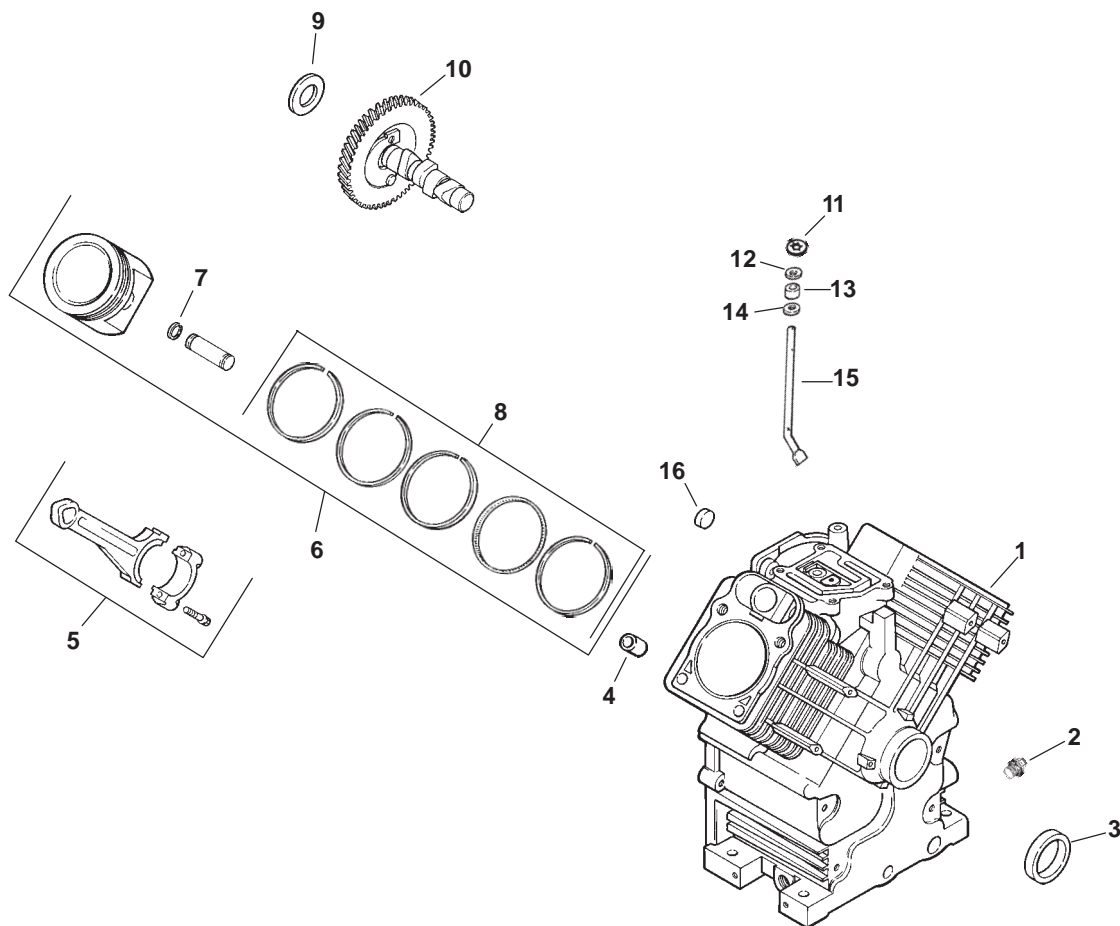


Crankshaft

Ref. No.	Part No.	Qty.	Description
1	24 014 90-S	1	Crankshaft assembly (Includes 2)
2	52 139 09-S	1	Plug, cup

Ref. No.	Part No.	Qty.	Description

Obtain Parts From Kohler

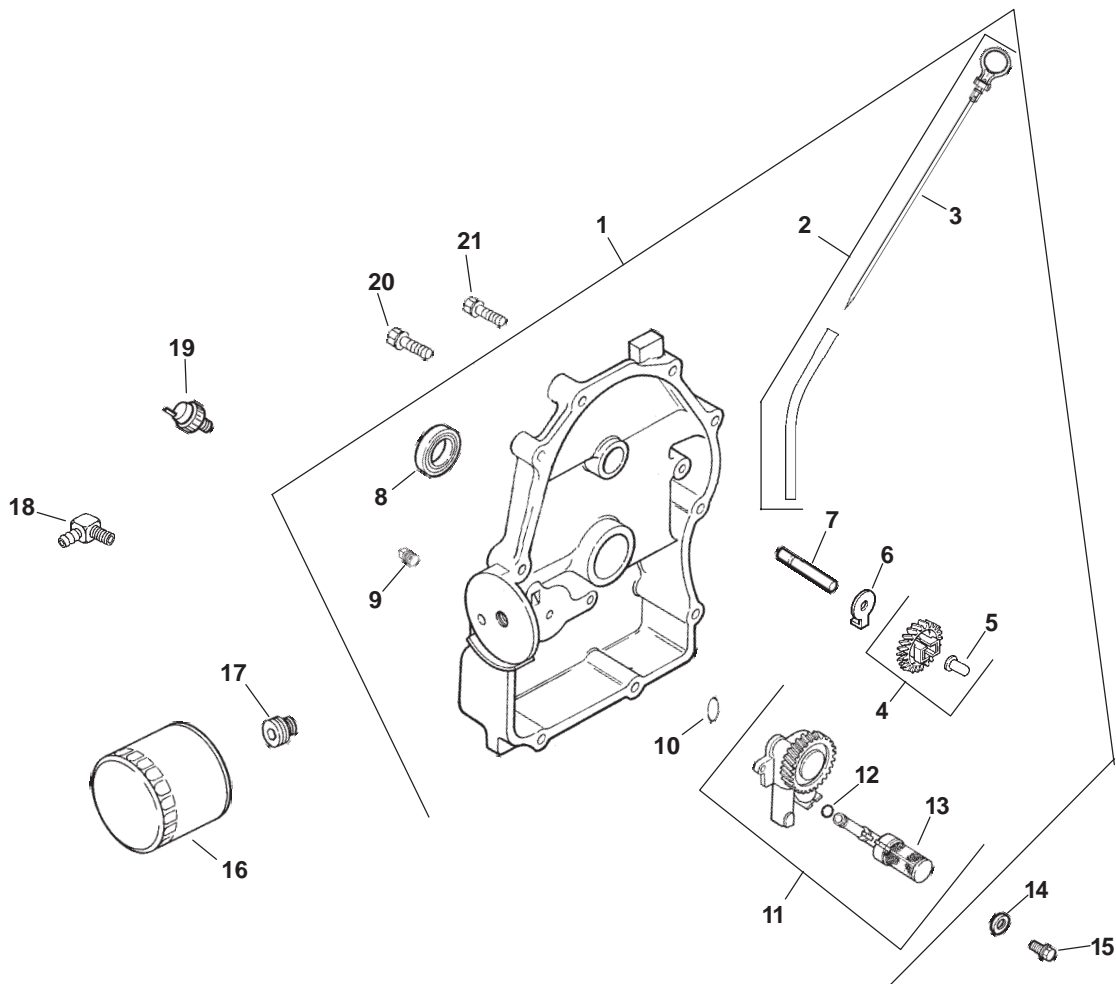


Crankcase

Ref. No.	Part No.	Qty.	Description
1		1	Crankcase(USE: Miniblock 24 782 15)
2	52 139 02-S	2	Plug, hex. hd. 3/8 N.P.T.F.
3	24 032 01-S	1	Seal, oil front
4	24 380 13-S	6	Pin, dowel locating
5	24 067 13-S	2	Connecting Rod (Std.)
	24 067 14-S	2	Connecting Rod (.25)
6	24 874 17-S	2	Piston w/Ring Set (Std.) (Includes 7, 8)
	24 874 18-S	2	Piston w/Ring Set (.25)
	24 874 19-S	2	Piston w/Ring Set (.50)
	24 874 14-S	2	Piston w/Ring Set (.08)
7	24 018 01-S	4	Retainer, piston pin
8	24 108 11-S	2	Ring Set (Std.)
	24 108 12-S	2	Ring Set (.25)
	24 108 13-S	2	Ring Set (.50)
9	12 422 09-S	A.R.	Shim, camshaft
	12 422 13-S	A.R.	Shim, camshaft
	12 422 07-S	A.R.	Shim, camshaft
	12 422 08-S	A.R.	Shim, camshaft
	12 422 10-S	1	Shim, camshaft
	12 422 11-S	A.R.	Shim, camshaft
	12 422 12-S	A.R.	Shim, camshaft
10	24 012 10-S	1	Camshaft

Ref. No.	Part No.	Qty.	Description
11	24 018 09-S	1	Ring, retainer
12	M-931010-S	1	Washer, nylon (top)
13	28 032 09-S	1	Seal, governor cross shaft
14	24 468 15-S	1	Washer, (bottom)
15	24 144 33-S	1	Shaft, governor cross
16	52 139 09-S	1	Plug, cup

Obtain Parts From Kohler

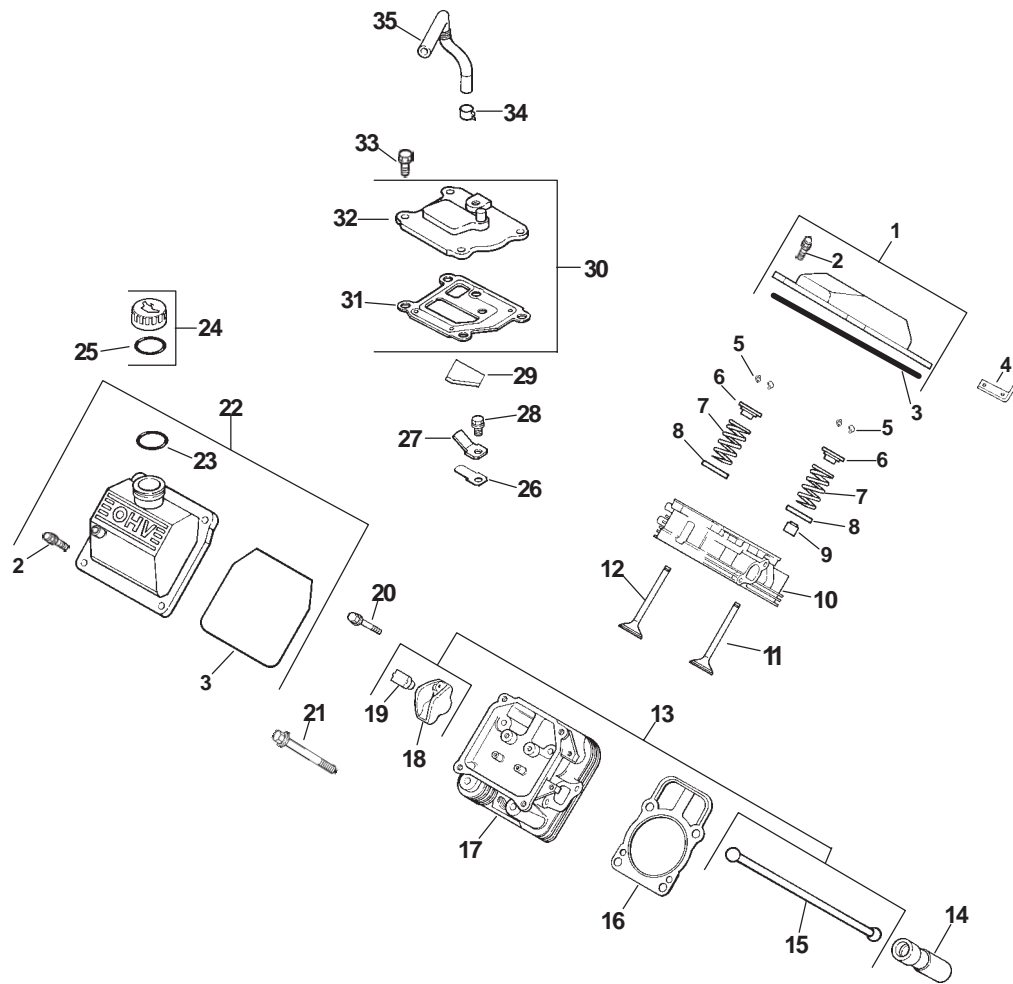


Oil Pan/Lubrication

Ref. No.	Part No.	Qty.	Description
1	24 009 82-S	1	Kit, closure plate (Includes 2-13)
2	24 755 121-S	1	Kit, dipstick & tube (Includes 3)
3	24 038 10-S	1	Dipstick
4	24 043 12-S	1	Kit, governor gear w/pin (Includes 5)
5	12 380 01-S	1	Pin, governor regulating
6	52 448 02-S	1	Tab, locking
7	12 144 02-S	1	Shaft, governor gear
8	52 032 08-S	1	Seal, oil (PTO end)
9	25 139 60-S	2	Plug, allen hd. 1/8 pipe
10	24 153 08-S	1	O-Ring
11	24 393 10-S	1	Oil pump assembly (Includes 12, 13)
12	24 153 01-S	1	O-Ring, oil pick-up
13	24 381 04-S	1	Pick-up, oil
14	M-631005-S	2	Washer, plain 6 mm
15	M-645025-S	2	Screw, hex. flange M6x1.0x25
16	52 050 02-S	1	Filter, oil
17	24 136 01-S	1	Nipple, oil filter
18	25 155 02-S	1	Connector
19	24 099 03-S	1	Switch, oil pressure

Ref. No.	Part No.	Qty.	Description
20	24 086 16-S	9	Screw, hex. flange M8x1.25x45
21	24 086 17-S	1	Screw, hex. flange M8x1.25x45

Obtain Parts From Kohler

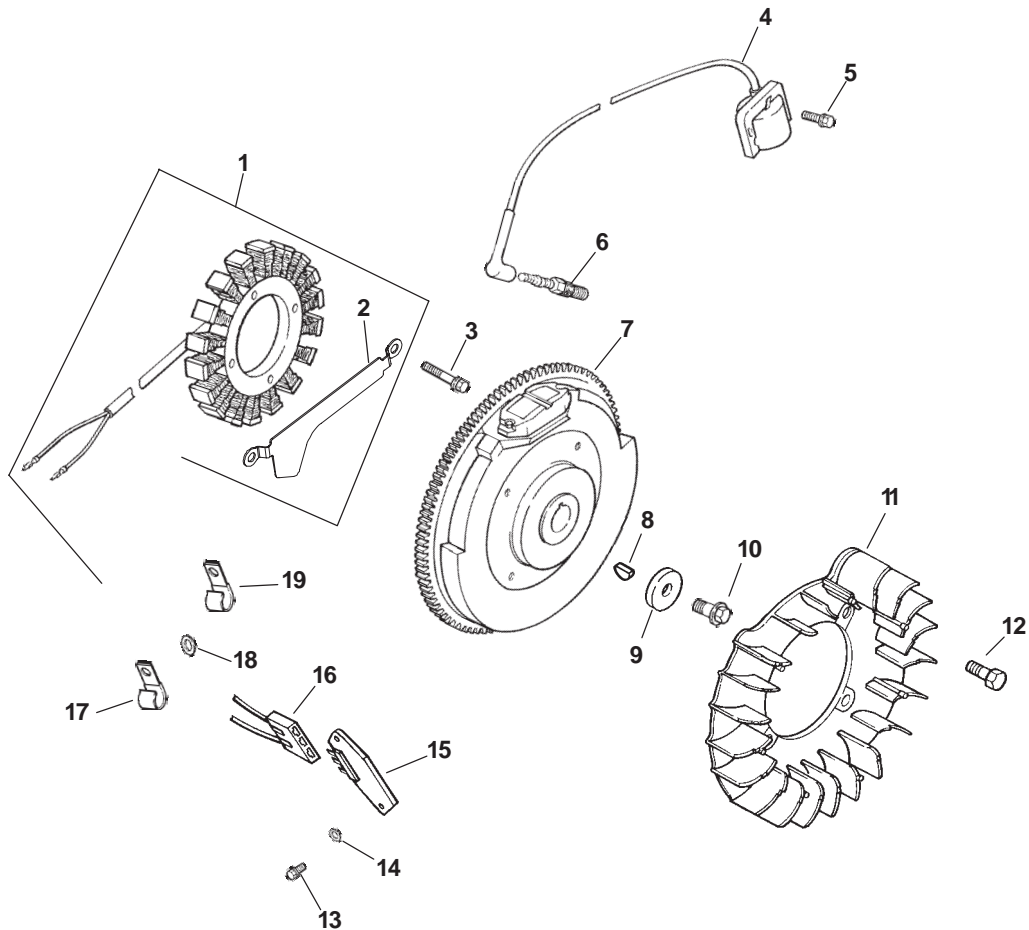


Head/Valve/Breather

Ref. No.	Part No.	Qty.	Description
1	24 755 74-S	1	Kit, valve cover – plain (Includes 2, 3)
2	24 086 32-S	4	Screw, shoulder
3	24 153 16-S	1	O-Ring
4	24 445 01-S	1	Strap, lifting
5	12 755 03-S	4	Kit, retainer
6	12 173 01-S	4	Cap, valve spring
7	24 089 02-S	4	Spring, valve
8	235011-S	4	Retainer, spring
9	66 032 05-S	2	Seal, valve stem
10	24 318 09-S	1	Head assembly, #1 cylinder
11	24 017 01-S	2	Valve, intake (Std.)
	24 017 02-S	2	Valve, intake (.25)
12	24 016 01-S	2	Valve, exhaust (Std.)
	24 016 02-S	2	Valve, exhaust (.25)
13	24 755 66-S	1	Kit, valve train (Includes 15, 18, 19)
14	25 351 01-S	4	Lifter, valve
15	24 411 05-S	4	Rod, push
16	24 041 08-S	2	Gasket, cylinder head
17	24 318 10-S	1	Head assembly, #2 cylinder
18	25 186 01-S	4	Arm, rocker
19	24 599 01-S	4	Pivot, rocker arm

Ref. No.	Part No.	Qty.	Description
20	M-640034-S	4	Screw, hex. flange M6x1.0x34
21	12 086 16-S	8	Screw, hex. flange M10x1.5x91
22	24 755 75-S	1	Kit, valve cover – oil fill (Includes 2, 3, 23)
23	24 153 09-S	1	O-Ring
24	24 755 46-S	1	Kit, oil fill cap (Includes 25)
25	12 153 03-S	1	O-Ring, oil fill cap
26	24 402 03-S	1	Reed, breather
27	12 018 01-S	1	Retainer, breather reed
28	M-545010-S	1	Screw, hex. flange M5x0.8x10
29	24 050 01-S	1	Filter, breather
30	24 033 01-S	1	Kit, breather (Includes 31, 32)
31	24 041 23-S	1	Gasket, breather
32	24 096 58-S	1	Cover, breather
33	M-645020-S	4	Screw, hex. flange M6x1.0x20
34	25 237 14-S	1	Clamp, breather
35	24 326 26-S	1	Hose, breather

Obtain Parts From Kohler



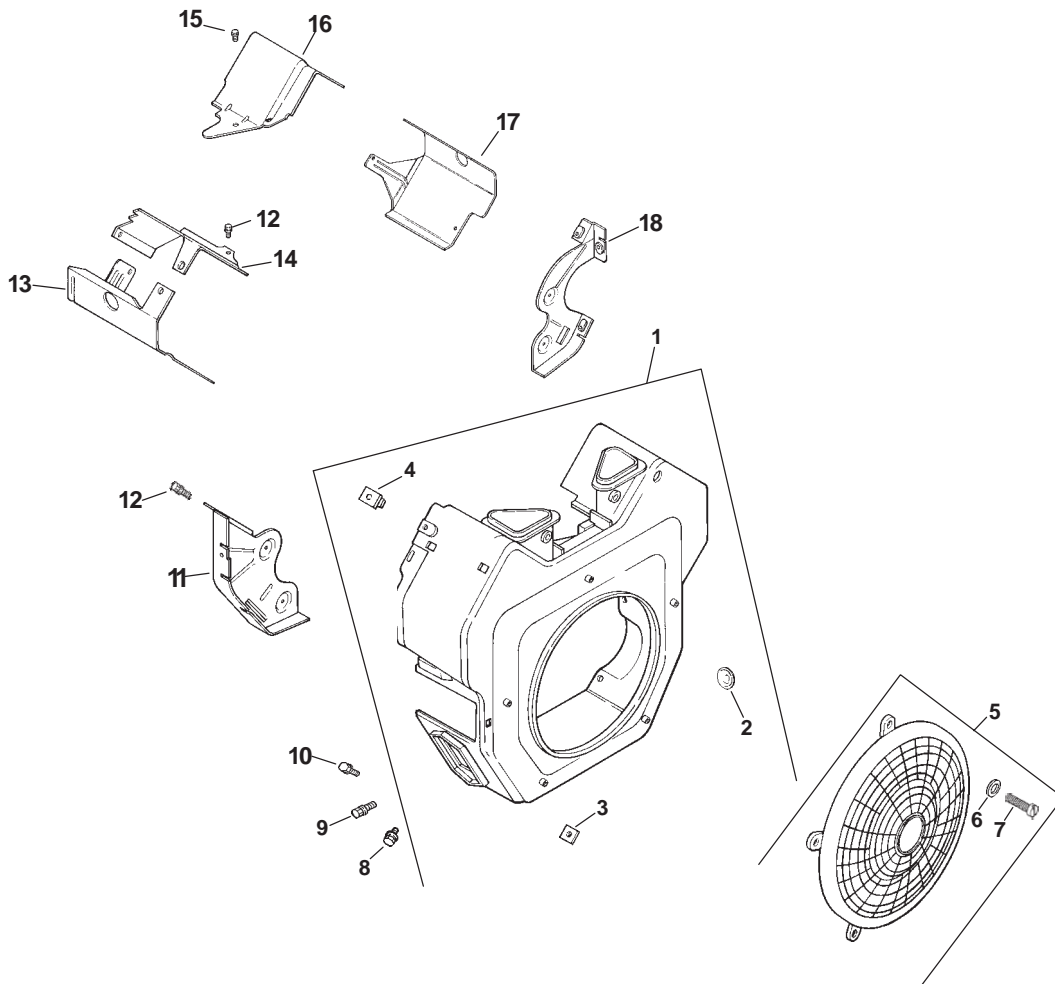
Ignition/Electrical

Ref. No.	Part No.	Qty.	Description
1	54 755 09-S	1	Kit, 15 amp stator (Includes 2)
2	24 126 71-S	1	Bracket, stator wire
3	M-548025-S	2	Screw, hex. cap M5x0.8x25
4	24 584 01-S	2	Module, ignition
5	M-545020-S	4	Screw, hex. flange M5x0.8x20
6	12 132 06-S	2	Spark Plug
7	24 025 04-S	1	Flywheel
8	X-42-15-S	1	Key
9	12 468 03-S	1	Washer, plain 3/8
10	12 086 14-S	1	Screw, hex. flange M10x1.5x46
11	24 157 03-S	1	Fan
12	25 086 47-S	4	Bolt, shoulder
13	24 086 18-S	2	Screw, phillips hd. 11-16x7/8
14	X-25-92-S	2	Washer, plain 3/16
15	25 403 03-S	1	Rectifier-regulator 15 amp
16	236602-S	1	Connector
17	235173-S	1	Clip, cable
18	X-25-63-S	1	Washer, plain 1/4
19	48 154 02-S	1	Clip, cable (for B+ lead)

Ref. No.	Part No.	Qty.	Description
*20	24 176 08-S	1	Harness, wiring
*21	24 518 12-S	1	Lead, black (5" - 12 gauge - insulated grip barrel eyelet terminals)
*22	25 454 03-S	2	Tie
*23	25 086 91-S	2	Screw, sems hex. cap 10-16x1/2 (mounts 5 wire connector of harness to barrel baffle above starter)
*24	X-22-11-S	1	Washer, lock 1/4"

Obtain Parts From Kohler

* Not Illustrated

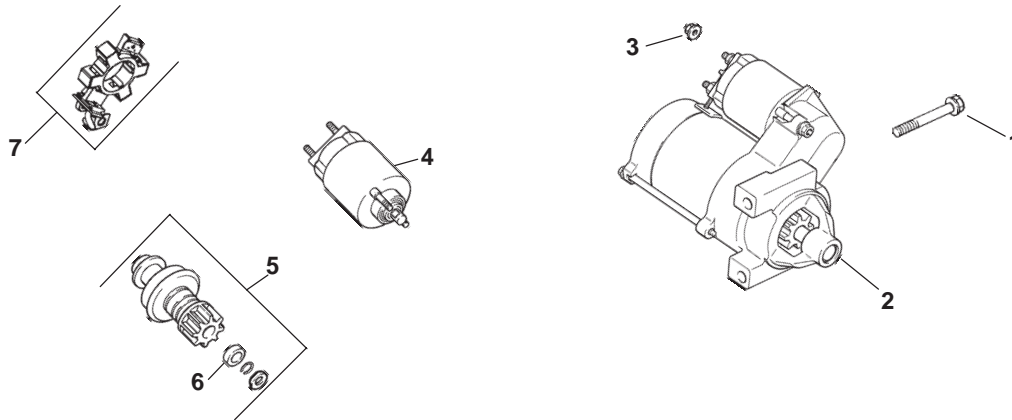


Blower Housing and Baffles

Ref. No.	Part No.	Qty.	Description	Ref. No.	Part No.	Qty.	Description
1	24 027 39-S	1	Housing, blower ASM (Includes 2-4, and Insert 24 332 01-S qty. 5)	14	24 063 17-S	1	Baffle, valley - #2 side
2	25 139 16-S	1	Plug, button 9/16	15	M-545010-S	2	Screw, hex. flange M5x0.8x10
3	24 100 01-S	2	Nut, plastic	16	24 063 24-S	1	Baffle, valley - #1 side
4	24 100 02-S	2	Nut, plastic	17	24 063 58-S	1	Baffle, cylinder barrel - #1 side
5	24 755 81-S	1	Kit, fixed guard (Includes 6, 7, and Insert 24 332 01-S qty. 5)	18	24 146 20-S	1	Plate, backing - #1 side
6	24 468 10-S	5	Washer, plain 1/4"	*19	25 113 24-S	1	Decal, small round
7	24 086 35-S	5	Screw, pan hd. M5x0.8x10	*20	24 113 95-S	1	Decal, HP
8	M-551016-S	1	Screw, hex. flange M5x0.8x16				
9	M-545016-S	3	Screw, hex flange M5x0.8x16				
10	M-545020-S	4	Screw, hex flange M5x0.8x20				
11	24 146 16-S	1	Plate, backing - #2 side				
12	M-645016-S	6	Screw, hex. flange M6x1.0x16				
13	24 063 20-S	1	Baffle, cylinder barrel - #2 side				

Obtain Parts From Kohler

* Not Illustrated

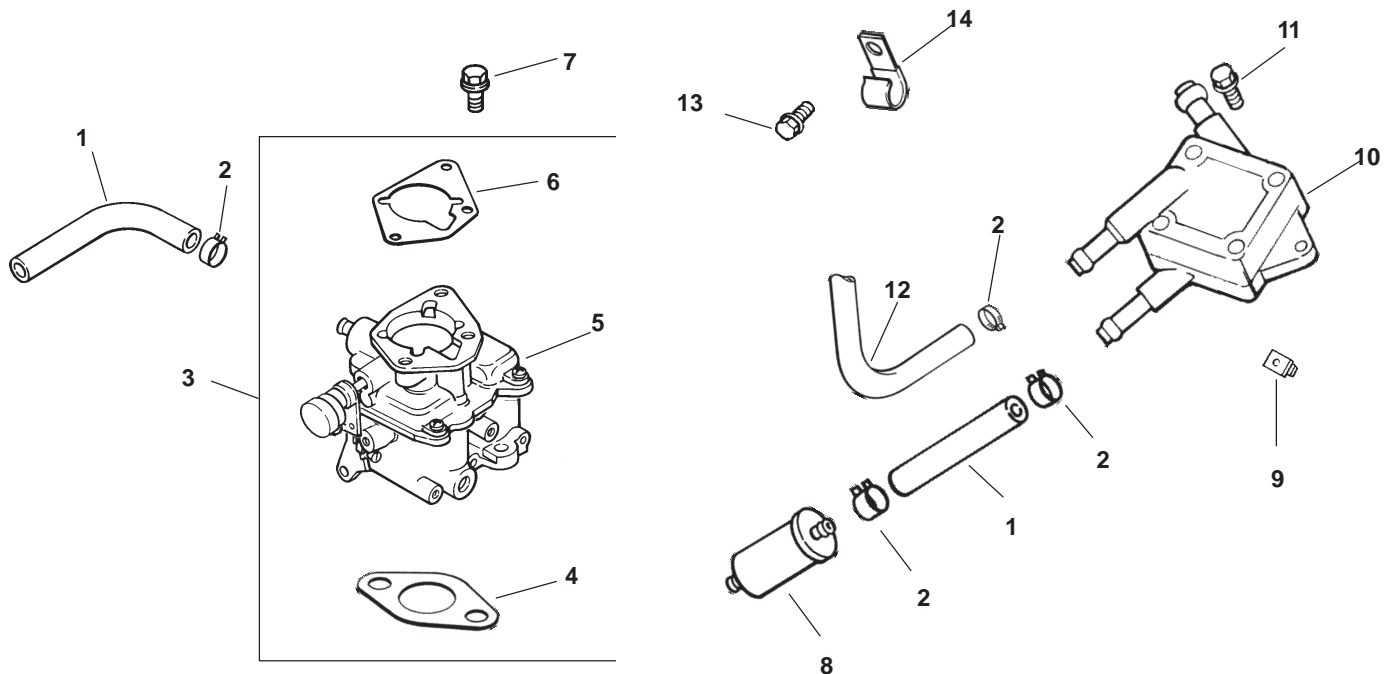


Starting System

Ref. No.	Part No.	Qty.	Description
1	M-839080-S	2	Screw, hex. flange M8x1.25x80
2	25 098 08-S	1	Starter, solenoid shift assembly (Includes 4-7)
3	M-841080-S	1	Nut, hex. flange M8x1.25
4	25 435 04-S	1	Kit, solenoid
5	25 755 33-S	1	Kit, pinion drive (Includes 6)
6	25 141 05-S	1	Ring
7	25 221 01-S	1	Kit, brush

Ref. No.	Part No.	Qty.	Description

Obtain Parts From Kohler



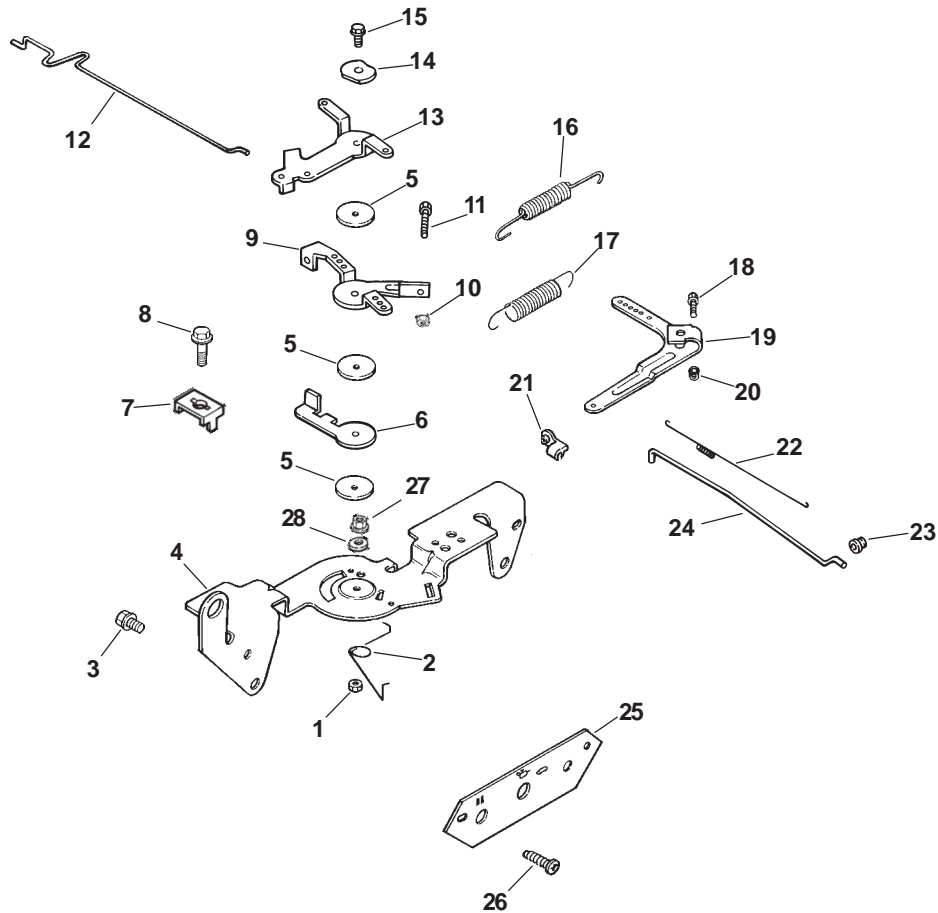
Fuel System

Ref. No.	Part No.	Qty.	Description
1	25 353 32-S	2	Line, fuel 9-1/4"
2	25 237 14-S	6	Clamp, hose
3	24 853 43-S	1	Kit, carburetor w/gasket (Includes 4-6)
4	24 041 17-S	1	Gasket, carburetor
5	24 053 43	1	Carburetor assembly (For information only, not available separately) (Service with: 24 757 01-S, 24 757 02-S, 24 757 03-S, 24 757 07-S)
6	24 041 06-S	1	Gasket, air cleaner
7	M-651030-S	2	Screw, hex. flange M6x1.0x30
8	24 050 02-S	1	Filter, fuel
9	24 100 01-S	2	Nut, plastic
10	24 393 16-S	1	Pump, fuel - pulse
11	24 086 12-S	2	Screw, hex. cap 18 mm
12	24 353 02-S	1	Line, fuel 15-1/2"
13	M-650012-S	1	Screw, hex. flange M6x1.0x10
14	47 154 01-S	1	Clip, cable

Ref. No.	Part No.	Qty.	Description
*15	24 757 01-S	1	Kit, solenoid
*16	24 757 02-S	1	Kit, float
*17	24 757 03-S	1	Kit, carburetor repair
*18	24 757 07-S	1	Kit, choke repair

Obtain Parts From Kohler

* Not Illustrated

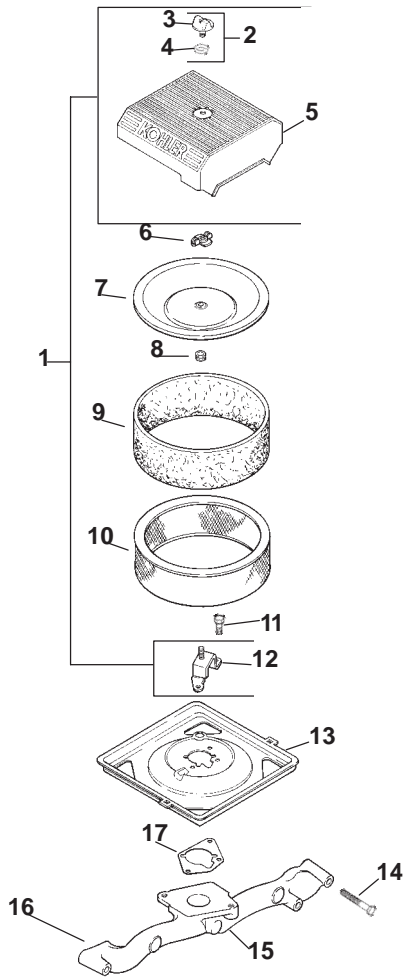


Engine Controls

Ref. No.	Part No.	Qty.	Description
1	M-547050-S	1	Nut, hex. lock M5x0.8
2	24 089 03-S	1	Spring, choke return
3	M-645016-S	4	Screw, hex. flange M6x1.0x16
4	24 126 56-S	1	Bracket, control
5	24 468 01-S	3	Washer, plain 1/4
6	24 090 07-S	1	Lever, throttle actuator
7	12 237 01-S	2	Clamp, cable
8	M-545016-S	3	Screw hex. flange M5x0.8x16
9	24 090 03-S	1	Lever, throttle control
10	M-446030-S	1	Nut, hex. flange M4x0.7
11	M-401030-S	1	Screw, hex. flange M4x0.7x30
12	24 079 02-S	1	Linkage, choke
13	24 090 05-S	1	Lever, choke
14	41 468 03-S	1	Washer, spring 1/4
15	M-545020-S	1	Screw, hex. flange M5x0.8x20
16	24 089 51-S	1	Spring, throttle limiter
17	24 089 46-S	1	Spring, governor
18	24 211 03-S	1	Bolt, rd. hd. sq. neck M6x1.0x25
19	24 090 33-S	1	Lever, governor

Ref. No.	Part No.	Qty.	Description
20	M-641060-S	1	Nut, hex. flange M6x1.0
21	25 158 11-S	1	Bushing, linkage retaining
22	24 089 01-S	1	Spring, linkage
23	25 158 08-S	1	Bushing, throttle linkage
24	24 079 01-S	1	Linkage, throttle
25	24 378 01-S	1	Panel, control
26	24 086 06-S	1	Screw, phillips hd. 11-16x3/4"
27	M-541050-S	1	Nut, hex. flange M5x0.8
28	X-20-1-S	1	Washer, lock 1/4

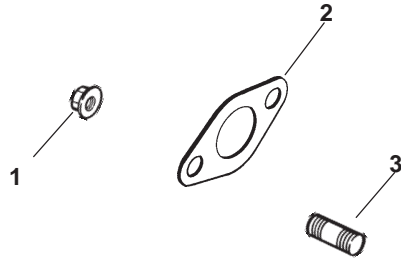
Obtain Parts From Kohler



Air Intake/Filteration

Ref. No.	Part No.	Qty.	Description	Ref. No.	Part No.	Qty.	Description
1	24 743 06-S	1	Kit, air cleaner cover (Includes 2-5, 12)				
2	54 755 01-S	1	Kit, knob w/seal (Includes 3, 4)				
3	25 341 03-S	1	Knob, cover				
4	24 153 20-S	1	O-Ring, cover knob				
5	24 096 26-S	1	Cover, air cleaner				
6	12 100 01-S	1	Wing Nut				
7	24 096 01-S	1	Cover, inner air cleaner				
8	24 032 03-S	1	Seal				
9	24 083 02-S	1	Precleaner				
10	47 083 03-S	1	Element				
11	M-639016-S	3	Screw, hex. flange M6x1.0x16				
12	24 126 21-S	1	Bracket, air cleaner				
13	24 094 03-S	1	Base, air cleaner				
14	25 086 84-S	4	Screw, hex. flange M6x1.0x55				
15	24 164 14-S	1	Manifold, intake				
16	24 041 01-S	2	Gasket, intake manifold				
17	24 041 06-S	1	Gasket, air cleaner base				

Obtain Parts From Kohler



Exhaust

Ref. No.	Part No.	Qty.	Description
1	M-841080-S	4	Nut, hex. flange M8x1.25
2	24 041 02-S	2	Gasket, exhaust
3	25 072 04-S	4	Stud, M8x1.25x33
	24 522 181	1	Short Block
	24 782 15	1	Miniblock
	24 755 107-S	1	Gasket Set

Ref. No.	Part No.	Qty.	Description

Obtain Parts From Kohler

Maintenance Record

Date								

