



Parts Catalog

RapidSeed 430

Model No. 46435—Serial No. 321000001 and Up



Ordering Replacement Parts

To order replacement parts, please supply the part number, the quantity, and the description of each part desired.

Understanding Reference Numbers

Each identified part in an illustration has a reference number. The reference number for a part also appears in the parts list, along with other information about the part.

This catalog uses two special reference number formats, one to indicate parts in a service assembly and another to indicate the quantity of a given part in an illustration.

Service Assembly Reference Numbers

Parts in service assemblies have reference numbers in the form a:b. The a represents the reference number of the entire service assembly and the b represents a sequential number unique to each part within the service assembly.

For example, a wheel assembly might be identified by reference number 6, the tire by 6:1, the valve by 6:2, and the wheel by 6:3. When you order the assembly identified by reference number 6, you receive all parts identified by reference numbers 6:1, 6:2, and 6:3. However, you may also order any part individually. Reference numbers of this type appear in illustration and in parts lists.

Reference Numbers Indicating Quantity

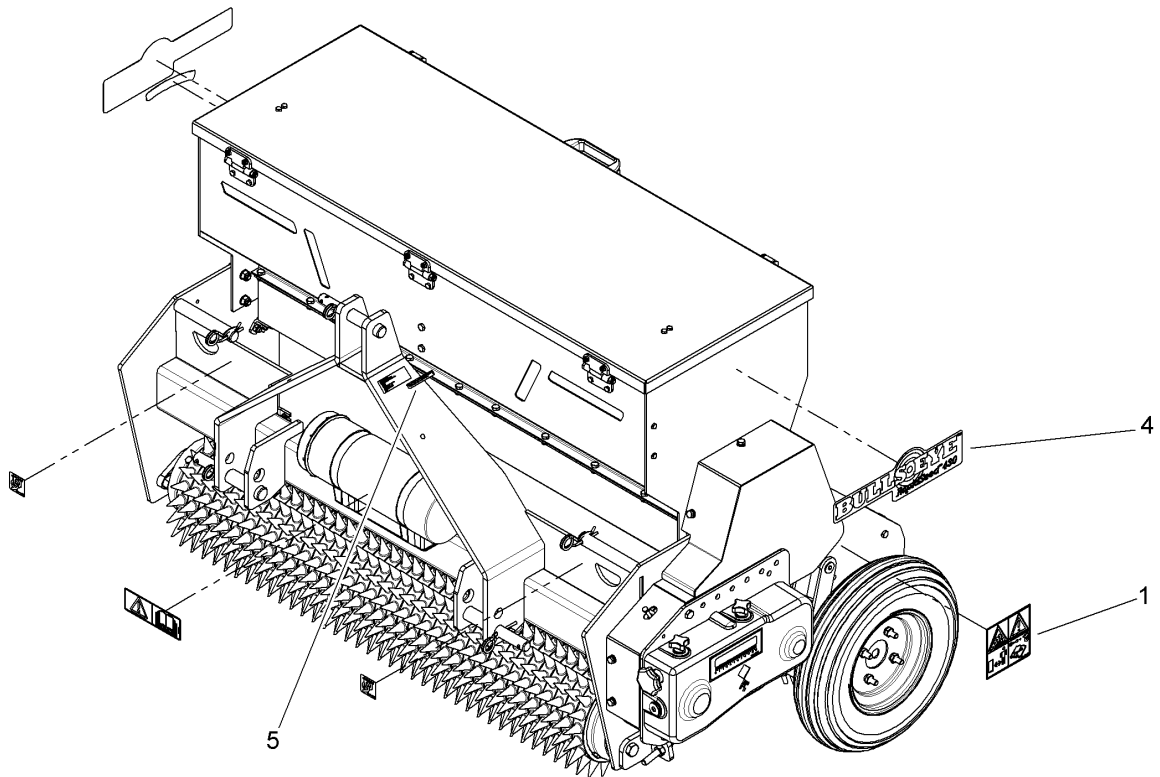
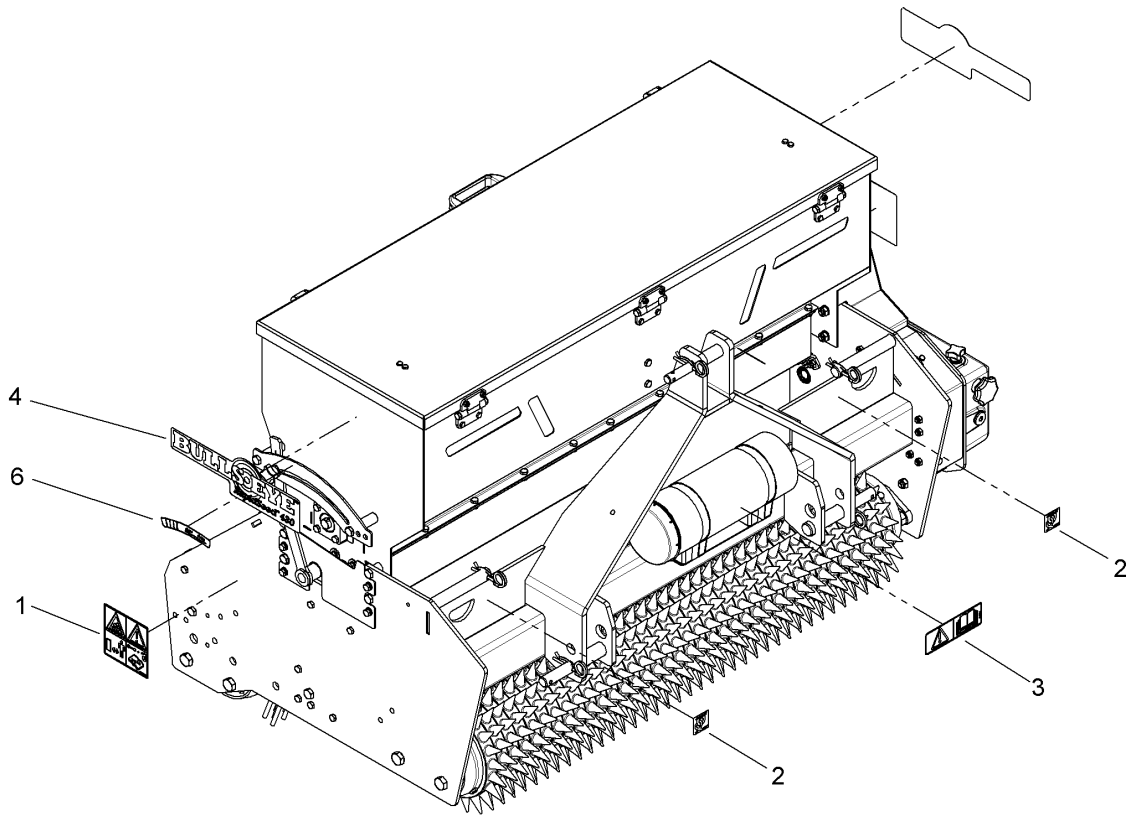
In an illustration, if a reference number indicates more than one part, the reference number has the form nX y. The n represents the quantity of the part, the X is the multiplication symbol, and the y represents the reference number.

For example, in an illustration, the reference number 2X 37 means that two of the parts identified by reference number 37 are indicated.

Contents

Decals Assembly	4
Rollers and Brush Assembly	6
Covers Assembly	8
Seed Guide Assembly	10
Wheel Drive Assembly	12
Hopper Assembly	14
Seed Element Assembly	16
Wheel Kit	18
Gearbox Assembly	20
Attachments and Accessories	22

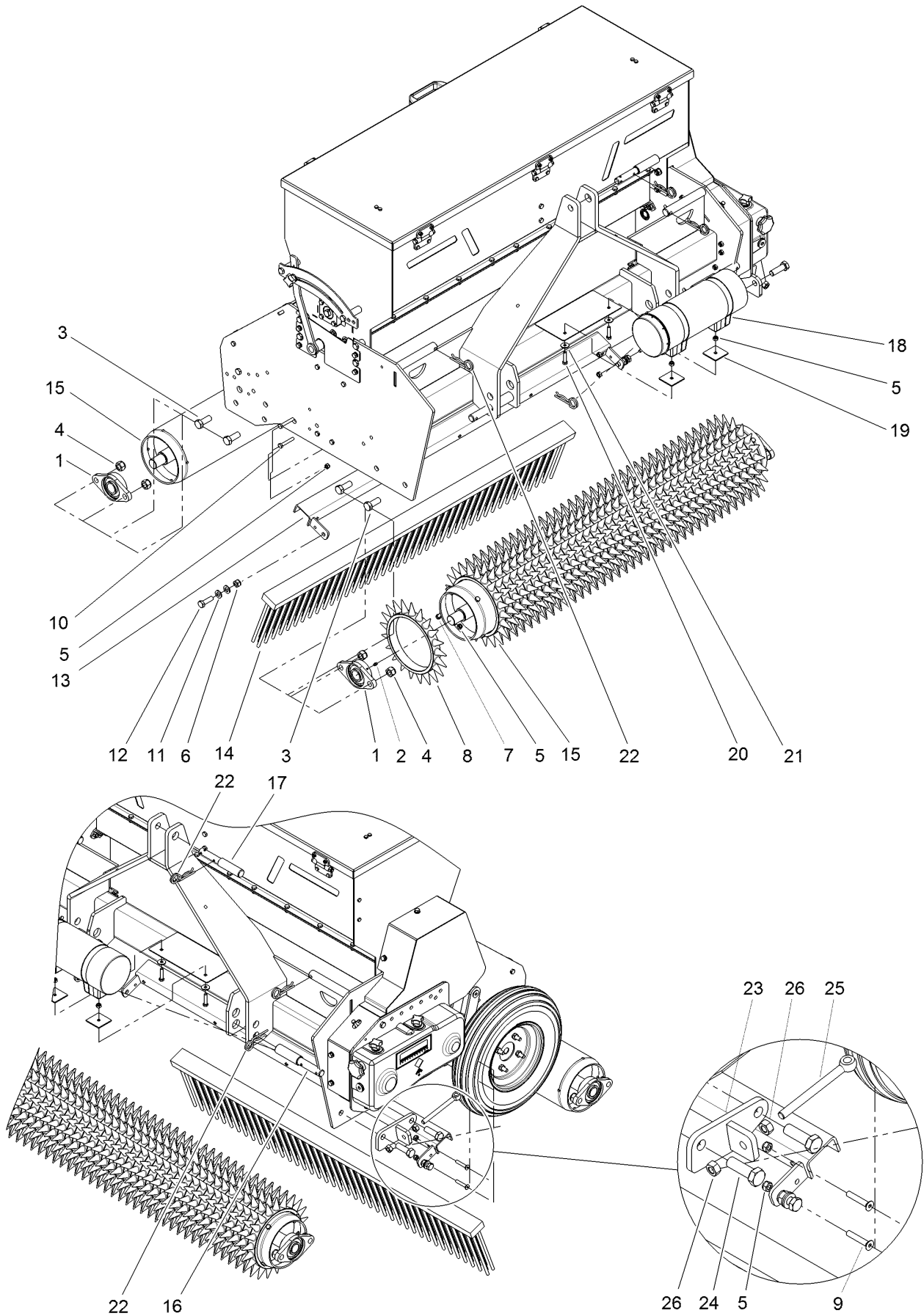
Decals Assembly



Decals Assembly (continued)

<i>Ref.</i>	<i>Part Number</i>	<i>Qty.</i>	<i>Description</i>	<i>Ref.</i>	<i>Part Number</i>	<i>Qty.</i>	<i>Description</i>
1	144-8257	2	Decal-Safety Vs	4	136-3671	2	Decal-Rapidseed 430
2	144-8553	2	Decal Fixation Point	5	133-8061	1	Decal-Warning
3	105-0698	1	Decal-Caution	6	144-8554	1	Decal Adjustment Valve

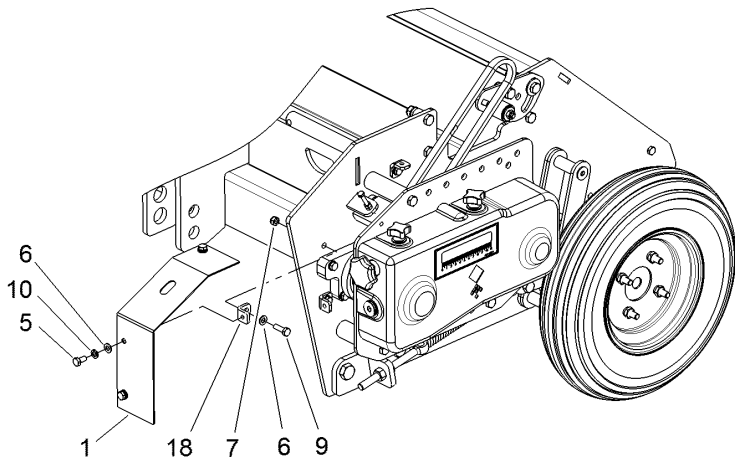
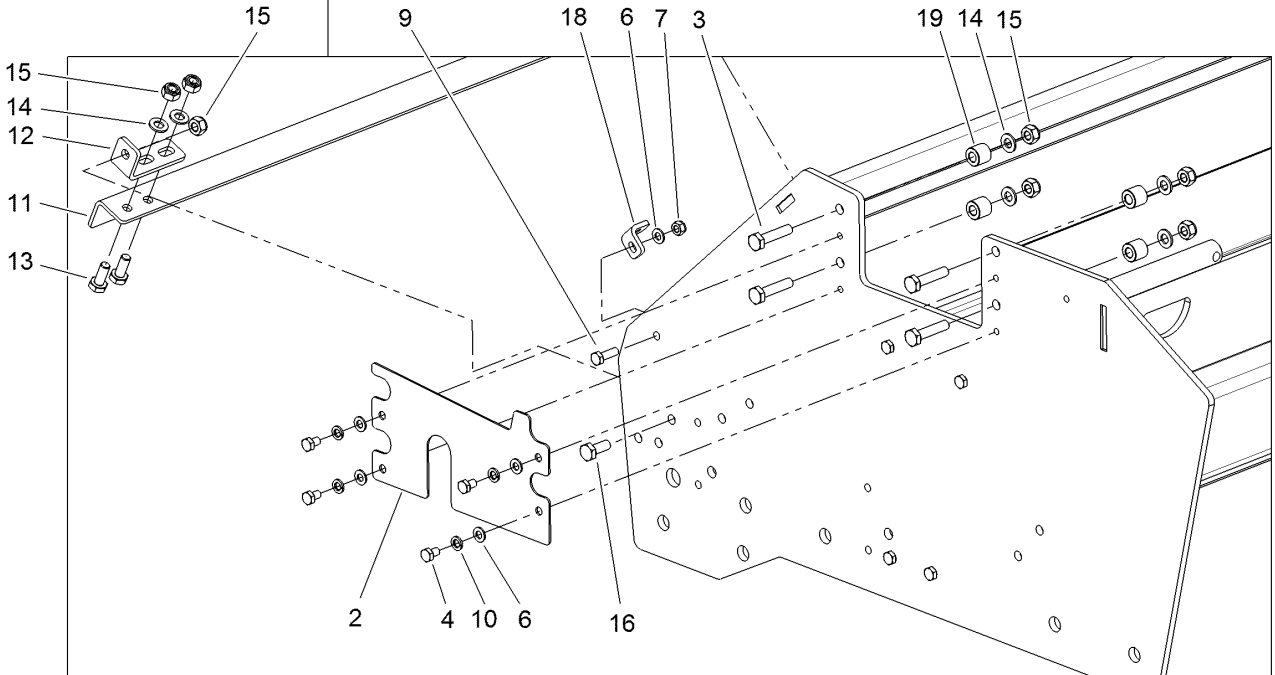
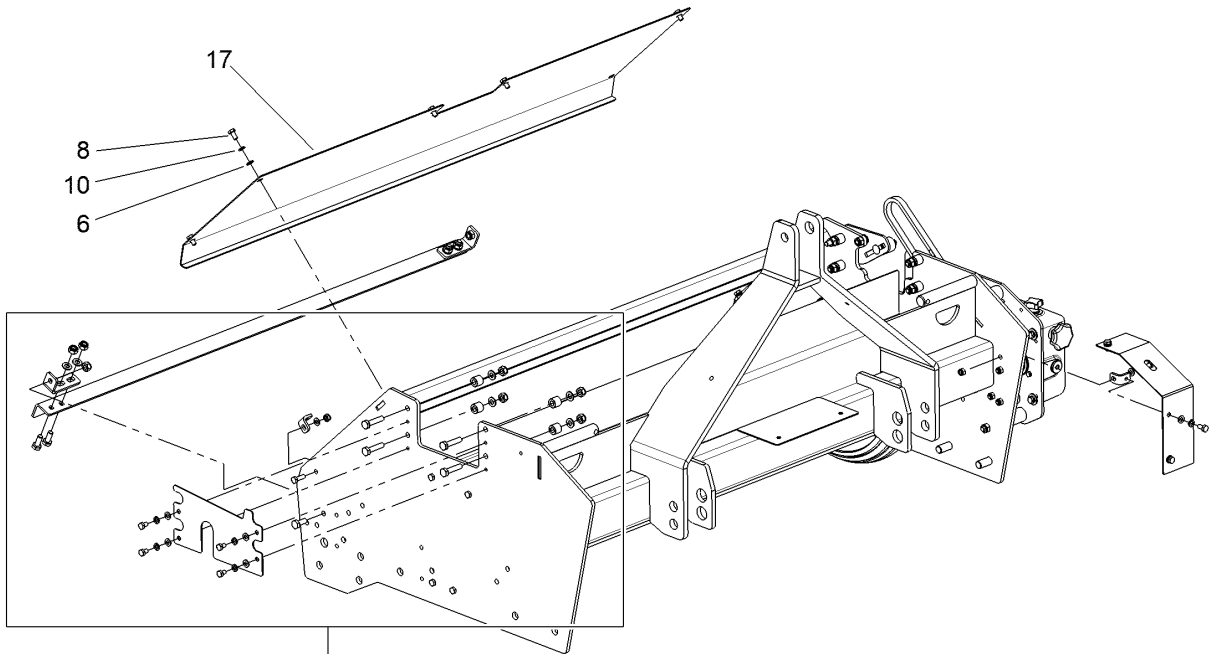
Rollers and Brush Assembly



Rollers and Brush Assembly (continued)

<i>Ref.</i>	<i>Part Number</i>	<i>Qty.</i>	<i>Description</i>	<i>Ref.</i>	<i>Part Number</i>	<i>Qty.</i>	<i>Description</i>
1	144-7708	4	Bearing Ucfl 206	13	144-8742	1	Weld ASM U-Channel Brush
2	144-7961	4	Grease Nipple M6 Din 71412A	14	144-8743	1	Rear Lag Brush
3	144-8141	6	Bolt M16 X 40 - ISO 4017	15	144-8744	1	Back Roller
4	144-7951	8	Nut, Self Lock M16 10.9 - ISO 10511	16	144-7709	2	Pin, Three Point
5	144-7944	14	Self Lock Nut M8 - ISO 10511	17	144-7711	1	Toplink Pin
6	144-7705	2	Nut, Self Locking - M 12	18	144-8128	1	Toolbox Complete
7	144-7945	8	Bolt M8 X 20 - ISO 4017	19	144-8129	2	Toolbox Contraplate
8	144-7730	37	Spikes	20	144-8130	2	Bolt M8 X 35 - ISO 4017
9	144-8741	2	Bolt M8 X 45 Din 7991	21	144-8013	2	Washer-Large M8 - Din 9021
10	144-8632	2	Bolt M8 X 50 - ISO 4017	22	144-7710	5	R Clip
11	144-7922	4	Washer M12 - ISO 7089	23	144-8745	1	Bracket Spring Tensioner
12	144-8215	2	Bolt M12 X 40 - ISO 4017	24	144-7989	2	Bolt M16 X 50 - ISO 4017
				25	144-8628	1	Eye Bolt M12X140
				26	144-8245	2	Nut M12 - Din 934

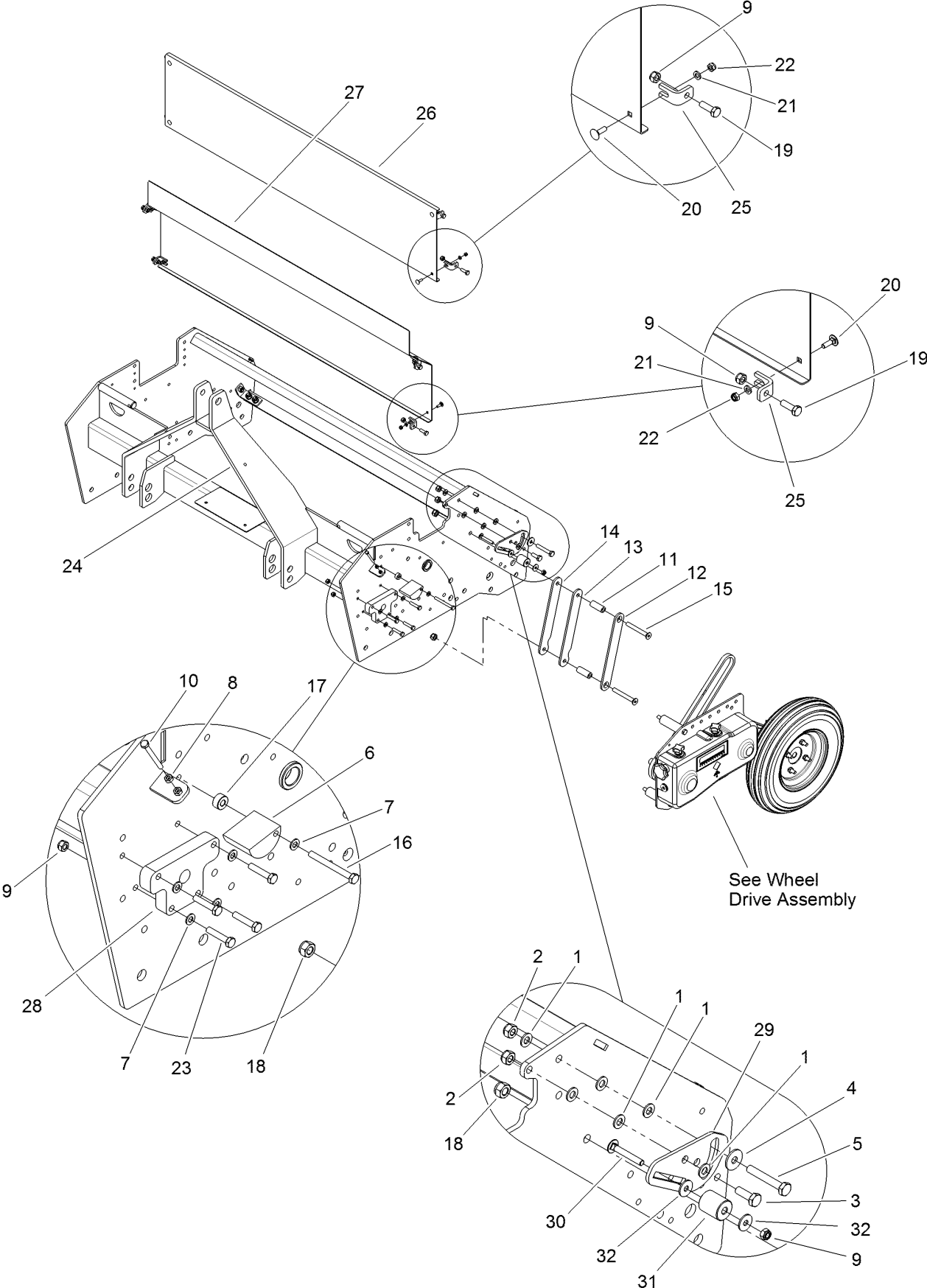
Covers Assembly



Covers Assembly (continued)

<i>Ref.</i>	<i>Part Number</i>	<i>Qty.</i>	<i>Description</i>	<i>Ref.</i>	<i>Part Number</i>	<i>Qty.</i>	<i>Description</i>
1	144-7900	1	Cover	10	144-7930	13	Spring Washer M8 - Din 127
2	144-7833	1	Side Cover Plate	11	144-8747	1	Scraper
3	144-8025	8	Bolt M10 X 45 - ISO 4017	12	144-8748	2	Bracket Scraper
4	144-8746	4	Bolt M8 X 12 - ISO 4017	13	144-7920	4	Bolt M10 X 25 - ISO 4017
5	144-7931	3	Bolt M8 X 16 - ISO 4017	14	144-7939	12	Washer M10 - ISO 7089
6	144-7929	18	Washer M8 - ISO 7089	15	144-7717	14	Nut, Self Locking - M 10
7	144-7944	5	Self Lock Nut M8 - ISO 10511	16	144-7920	2	Bolt M10 X 25 - ISO 4017
8	144-7931	6	Bolt M8 X 16 - ISO 4017	17	144-7903	1	Cover
9	144-8014	5	Bolt M8 X 25 - ISO 4017	18	144-8604	5	Cover Mounting Bracket
				19	144-8569	8	Distance Bushing

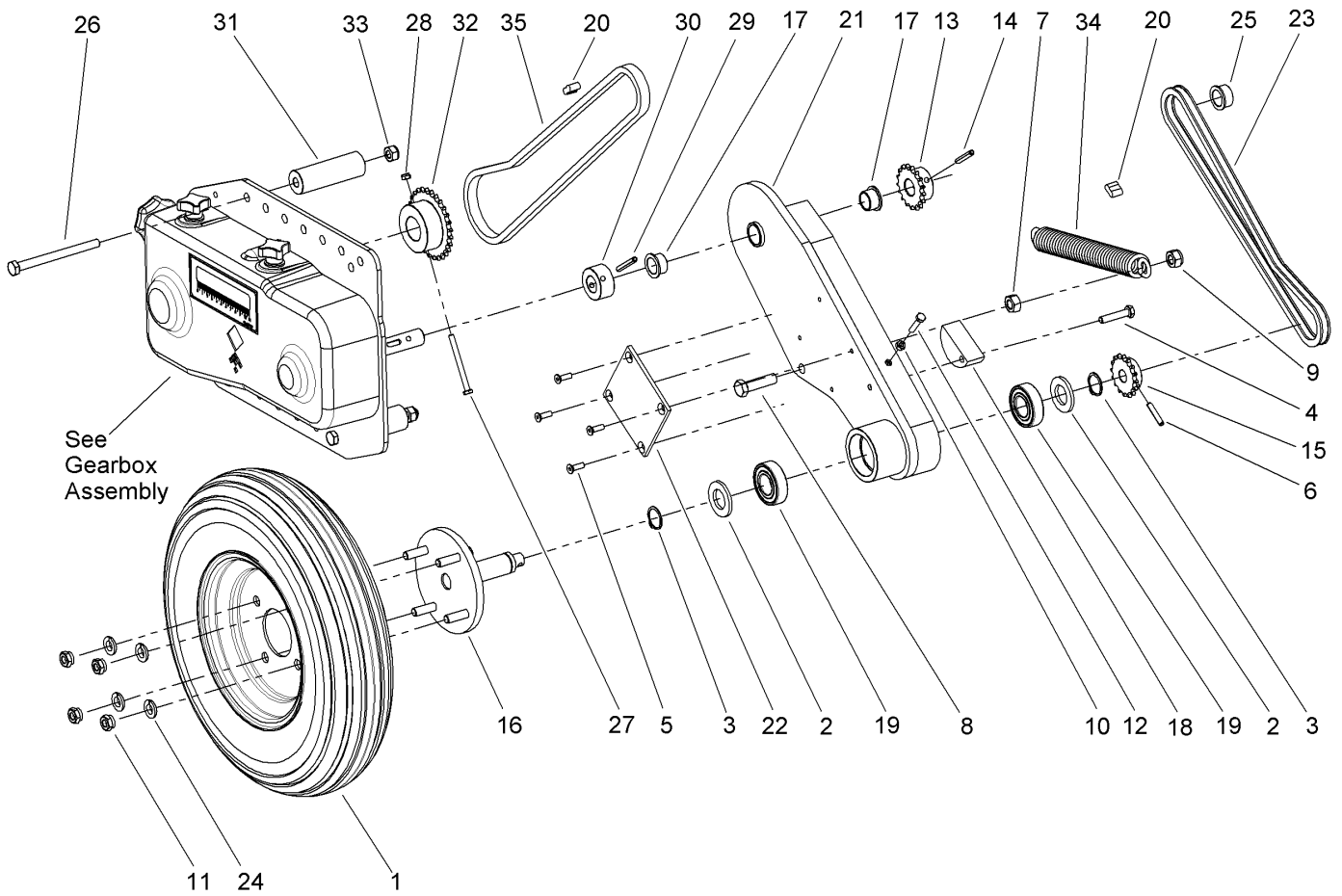
Seed Guide Assembly



Seed Guide Assembly (continued)

<i>Ref.</i>	<i>Part Number</i>	<i>Qty.</i>	<i>Description</i>	<i>Ref.</i>	<i>Part Number</i>	<i>Qty.</i>	<i>Description</i>
1	144-7939	6	Washer M10 - ISO 7089	17	144-8655	1	Distance Bushing
2	144-7717	2	Nut, Self Locking - M 10	18	144-7705	2	Nut, Self Locking - M 12
3	144-7768	1	Bolt M 10 X 30	19	144-8014	8	Bolt M8 X 25 - ISO 4017
4	144-7946	1	Large Washer M10 - Din 9021	20	144-8752	8	Mh Bolt M6 X 20 ISO 8677
5	144-8340	1	Bolt M10 X 65 - ISO 4014	21	144-8251	8	Washer M6 - ISO 7089
6	144-8654	1	Chain Tensioner	22	144-7940	8	Self Lock Nut M6 - ISO 10511
7	144-7929	5	Washer M8 - ISO 7089	23	144-7943	4	Bolt M8 X 40 - ISO 4017
8	144-8485	1	Nut M6 - Din 934	24	144-8753	1	Base Frame Bullseye
9	144-7944	13	Self Lock Nut M8 - ISO 10511	25	144-8754	8	Cover Mounting Bracket
10	144-8749	1	ISO 4017 - M6 X 60-C	26	144-7836	1	Seed Guide Plate Front
11	144-8750	2	Block Bushing Swing Arm	27	144-7838	1	Seed Guide Plate Front
12	144-7832	1	Guide Swing Arm	28	144-8755	1	Bearing Plate
13	144-8751	1	Guide Swing Arm	29	144-8616	1	Spanner Plate
14	144-7901	1	Spacer	30	144-8756	1	Mushroom Head Bolt M8X55
15	144-8630	2	Csk Screw M12 X 100 - Din 7991	31	144-8617	1	Spanner Roll
16	144-8269	1	Bolt M8 X 80 - ISO 4014	32	144-8013	2	Washer-Large M8 - Din 9021

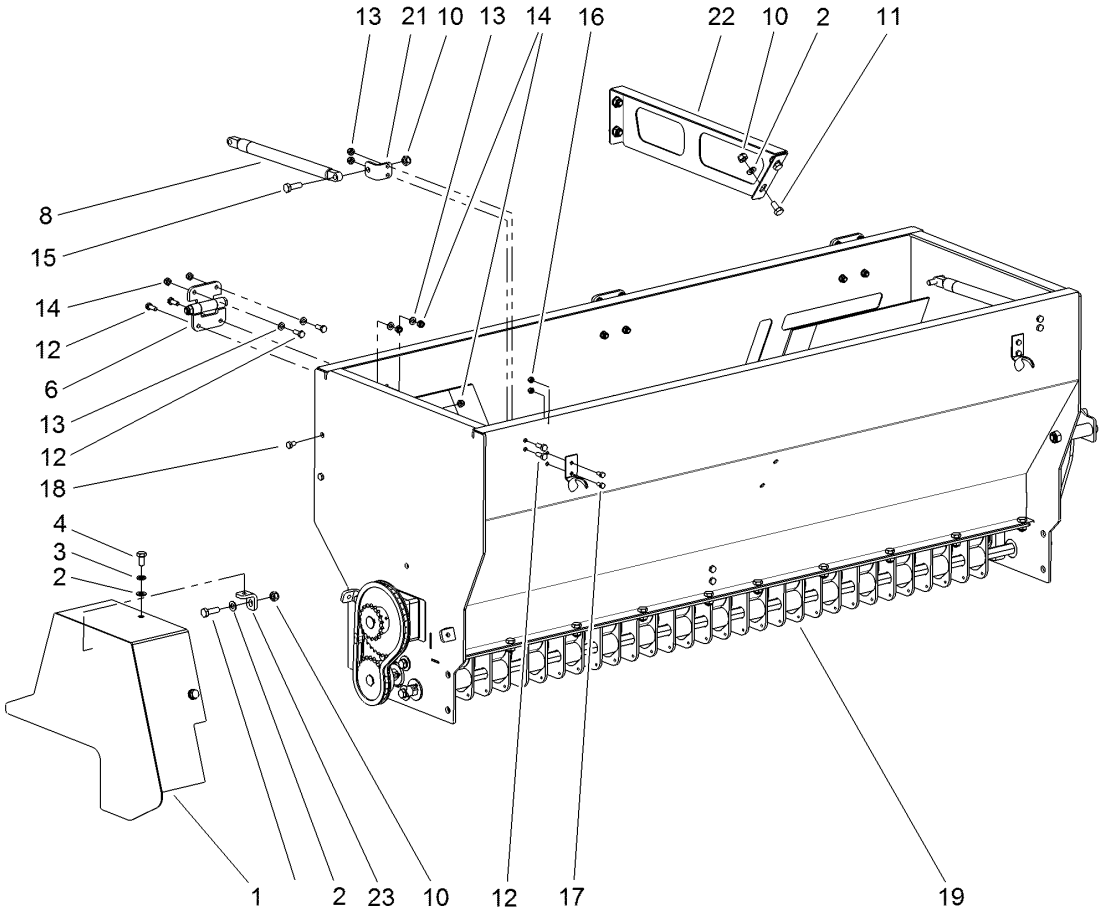
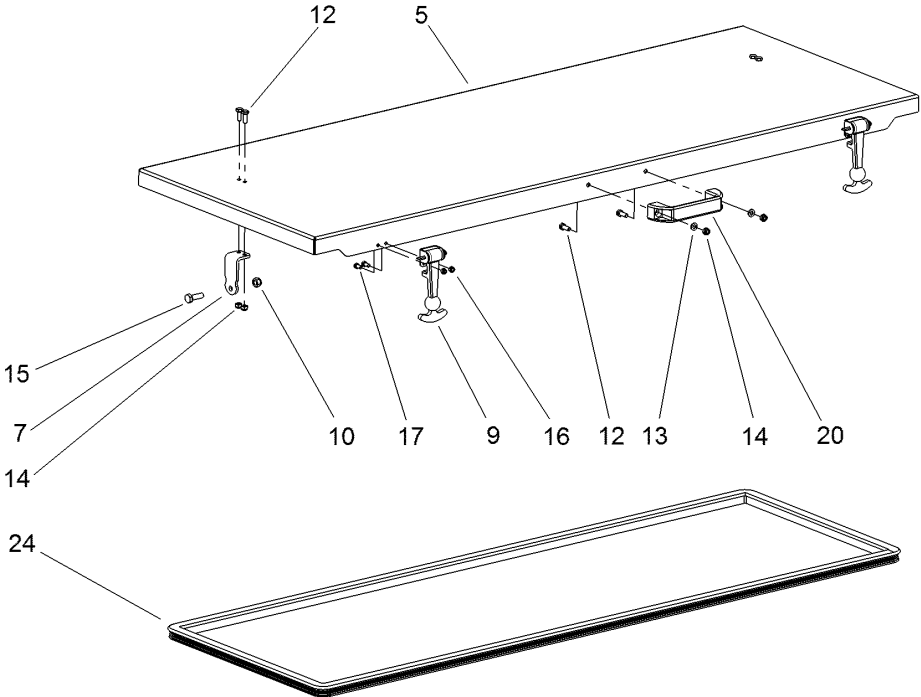
Wheel Drive Assembly



Wheel Drive Assembly (continued)

<i>Ref.</i>	<i>Part Number</i>	<i>Qty.</i>	<i>Description</i>	<i>Ref.</i>	<i>Part Number</i>	<i>Qty.</i>	<i>Description</i>
1	144-8635	1	Wheel Complete 4.00-8/4Pr	20	144-8555	2	Chain Connector 3_8 Inch 6B
2	144-8365	2	Washer M24 - ISO 7089	21	144-7904	1	Frame Swingarm
3	144-8636	2	Circlip D=25 - Din 471	22	144-8646	1	Guide Plate Swingarm
4	144-8063	1	Bolt M8 X 40 - ISO 4014	23	144-8762	1	Chain 3/8" Simplex L=817
5	144-8637	4	Bolt M6 X 20 - Din 7991	24	144-8998	4	Conical Spring Washer
6	144-8757	1	Roll Pin 6 X 32 - ISO 8752	25	144-8652	1	Bearing Bushing Gearaxle
7	144-8245	1	Nut M12 - Din 934	26	144-8136	3	Bolt M10 X 120 - ISO 4014
8	144-7722	1	Bolt M 12X45	27	144-8763	1	Bolt M6 X 70 - ISO 4014
9	144-7705	1	Nut, Self Locking - M 12	28	144-7940	1	Self Lock Nut M6 - ISO 10511
10	144-8485	1	Nut M6 - Din 934	29	144-8631	1	Roll Pin 6 X 45 - ISO 8752
11	144-8638	4	Wheel Nut M10X1.25	30	144-8656	1	Magnet Bushing
12	144-8194	1	Bolt M6 X 30 - ISO 4017	31	144-8648	3	Spacer
13	144-8758	1	Sprocket 3/8" (06B) Simplex 17Z	32	144-8764	1	Sprocket 3/8" (06B) Simplex 28Z Ø30
14	144-8759	1	Roll Pin 6 X 40 - ISO 8752	33	144-7717	3	Nut, Self Locking - M 10
15	144-8760	1	Sprocket 3/8" (06B) Simplex 16Z	34	144-8647	1	Spring Wheelaxle
16	144-8642	1	Wheel Hub	35	144-8765	1	Chain 3/8X7/32", L=1028.7MM
17	144-8643	2	Bearing Bushing Swingarm				
18	144-8761	1	Chain Tensioner				
19	144-8645	2	Bearing 6205-Llu				

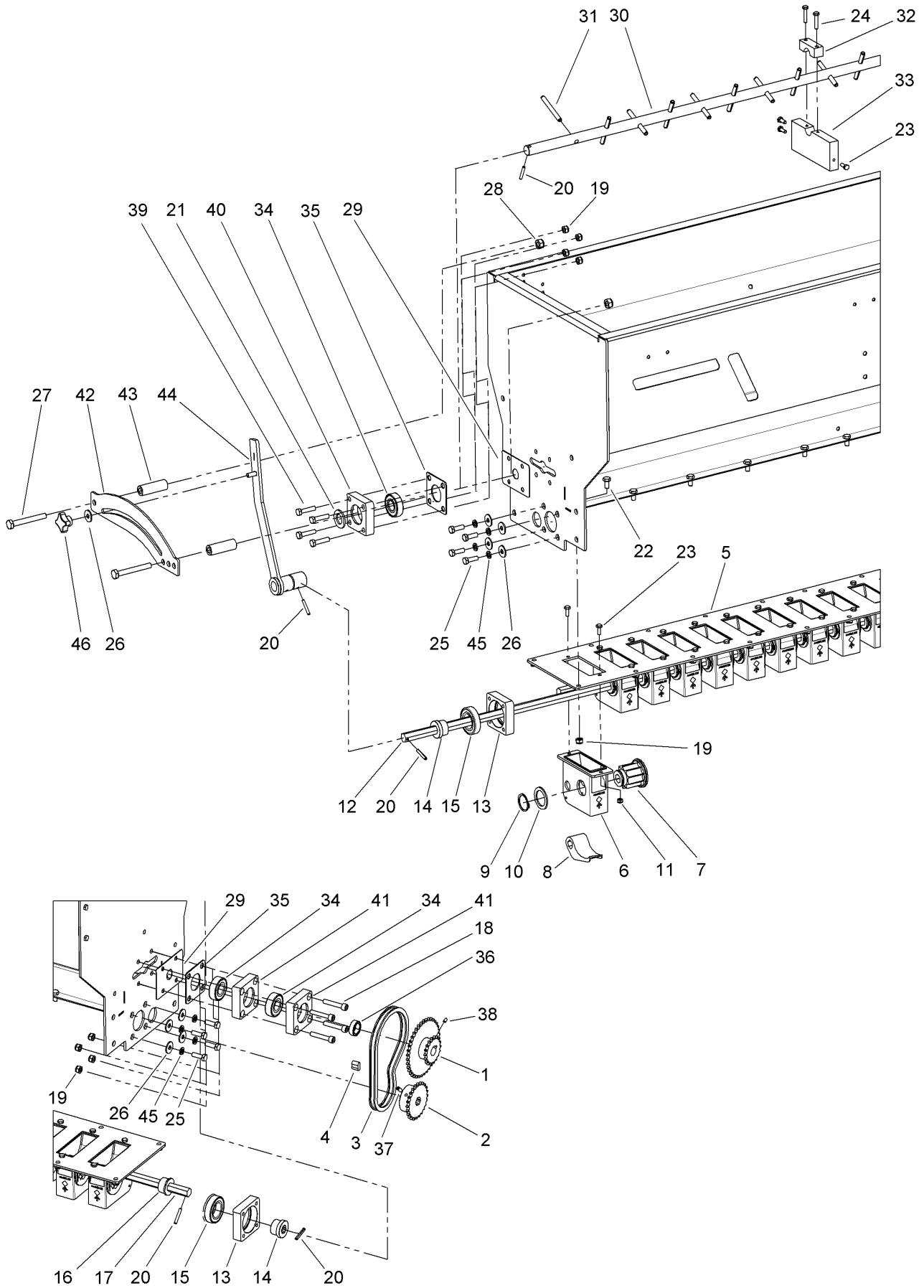
Hopper Assembly



Hopper Assembly (continued)

<i>Ref.</i>	<i>Part Number</i>	<i>Qty.</i>	<i>Description</i>	<i>Ref.</i>	<i>Part Number</i>	<i>Qty.</i>	<i>Description</i>
1	144-7839	1	Cover	13	144-8251	8	Washer M6 - ISO 7089
2	144-7929	10	Washer M8 - ISO 7089	14	144-7940	24	Self Lock Nut M6 - ISO 10511
3	144-7930	3	Spring Washer M8 - Din 127	15	144-8014	7	Bolt M8 X 25 - ISO 4017
4	144-7931	3	Bolt M8 X 16 - ISO 4017	16	144-8378	8	Self Lock Nut M5 - ISO 10511
5	144-8766	1	Top Cover Bullseye	17	144-8563	8	Bolt M5 X 10 - ISO 4017
6	144-8573	3	Hinge	18	144-8193	2	Bolt M6 X 12 - ISO 4017
7	144-8574	2	Support L=65MM	19	144-8768	1	Hopper Bullseye
8	144-8767	2	Gas Strut Stroke=160, F=150N	20	144-7926	1	Handle
9	144-8373	2	Rubber Lock ASM	21	144-8577	2	Support L=30MM
10	144-7944	11	Self Lock Nut M8 - ISO 10511	22	144-8769	1	Center Plate Bullseye
11	144-7931	4	Bolt M8 X 16 - ISO 4017	23	144-8604	3	Cover Mounting Bracket
12	144-8159	22	Bolt M6 X 16 - ISO 4017	24	144-8770	1	Glass Rubber Bullseye

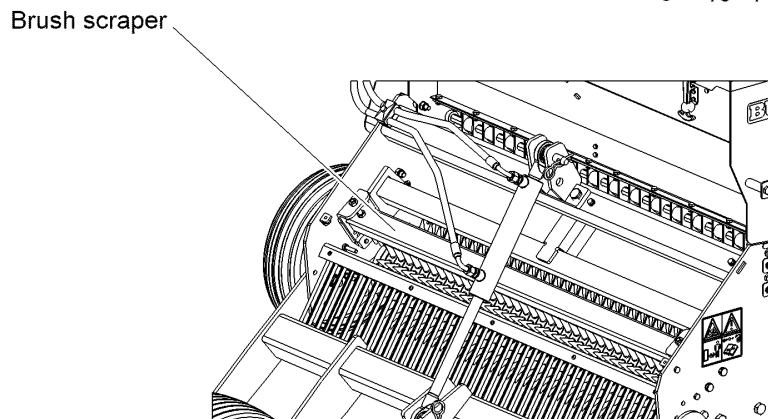
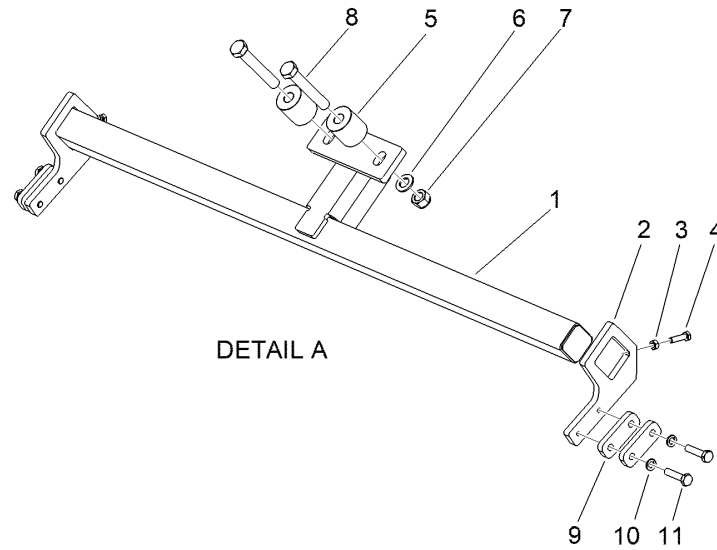
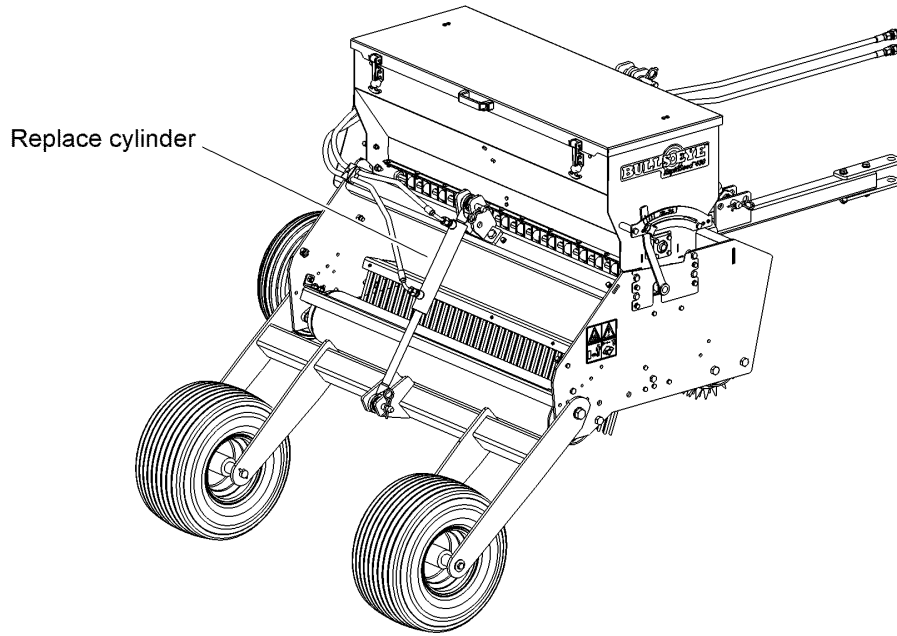
Seed Element Assembly



Seed Element Assembly (continued)

<i>Ref.</i>	<i>Part Number</i>	<i>Qty.</i>	<i>Description</i>	<i>Ref.</i>	<i>Part Number</i>	<i>Qty.</i>	<i>Description</i>
1	144-8582	1	Weldment Sprocket	24	144-8194	2	Bolt M6 X 30 - ISO 4017
2	144-8580	1	Sprocket 3/8"	25	144-8014	8	Bolt M8 X 25 - ISO 4017
3	144-8581	1	Chain 3/8X7/32", L=524	26	144-8013	9	Washer-Large M8 - Din 9021
4	144-8555	1	Chain Connector 3_8 Inch 6B	27	144-8777	2	Bolt M10 X 80 - ISO 4017
5	144-8771	1	Plate	28	144-7717	2	Nut, Self Locking - M 10
6	144-7725	15	Seed Element Casing	29	144-8585	2	Cover Plate
7	144-7726	15	Seed Element Rotor	30	144-8778	1	Agitator Shaft Complete With Roll Pins
8	144-7727	15	Seed Element Valve	31	144-8588	15	Roll Pin 8 X 70 - ISO 8752
9	144-7729	15	Circlip	32	144-8594	1	Guide Block Support
10	144-7728	15	Washer	33	144-8779	1	Guide Lock Block
11	144-7940	30	Self Lock Nut M6 - ISO 10511	34	144-8589	3	Bearing 6204-C-2Hrs
12	144-8772	1	Shaft	35	144-8780	2	Cover Plate
13	144-8592	2	Bearing Block	36	144-8781	1	Distance Bushing
14	144-8773	2	Bushing	37	144-8137	1	Set Screw M6 X 16 Din 913
15	144-8147	2	Bearing 6006-Llu	38	144-8214	1	Set Screw M5 X 8 - Din 913
16	144-8593	1	Bushing	39	144-8130	4	Bolt M8 X 35 - ISO 4017
17	144-8774	1	Shaft	40	144-8586	1	Bearing Block
18	144-8775	4	Bolt M8 X 45 - Din 912	41	144-8782	2	Bearing Block
19	144-7944	28	Self Lock Nut M8 - ISO 10511	42	144-8598	1	Guide Strip
20	144-8776	5	Roll Pin Ø5X32	43	144-8783	2	Distance Bushing Ø20/Ø10.5 L=60
21	144-7991	1	Washer M20 - ISO 7089	44	144-8597	1	Valve Adjustment
22	144-7931	20	Bolt M8 X 16 - ISO 4017	45	144-7930	8	Spring Washer M8 - Din 127
23	144-8159	33	Bolt M6 X 16 - ISO 4017	46	144-8601	1	Closed Knob M8 - Din 6335

Wheel Kit



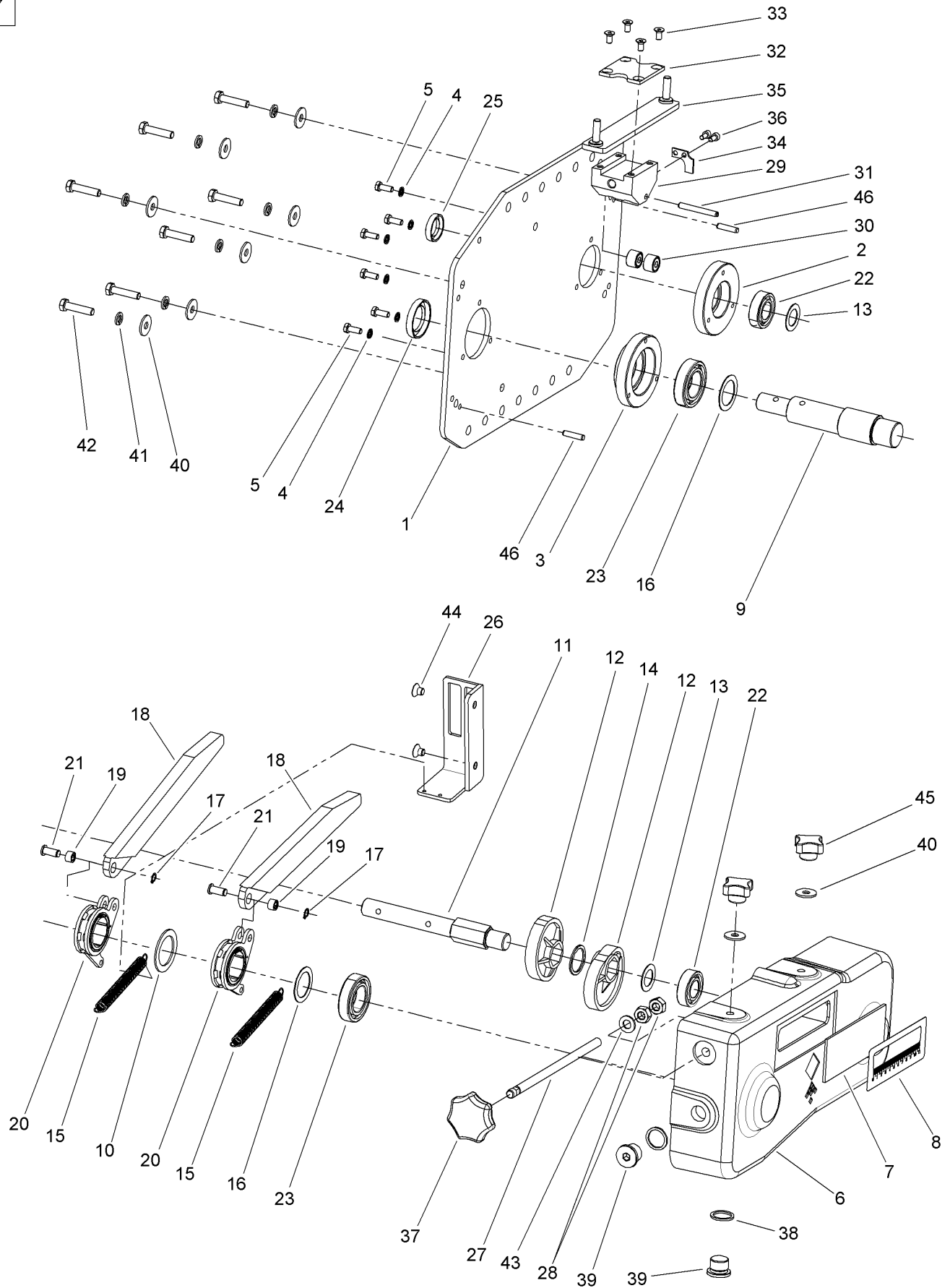
When using the brush scraper, item 9 (shims) are not needed anymore at both sides

Wheel Kit (continued)

<i>Ref.</i>	<i>Part Number</i>	<i>Qty.</i>	<i>Description</i>	<i>Ref.</i>	<i>Part Number</i>	<i>Qty.</i>	<i>Description</i>
1	144-9004	1	Sub Frame	8	144-9007	2	Bolt, M16 X 100 - ISO 4014
2	144-9005	2	Mounting Plate	9	144-9008	4	Shim
3	144-8273	2	Nut M8 - Din 934	10	144-7921	4	Spring Washer M10 - Din 127
4	144-7949	2	Bolt M8 X 30 - ISO 4017	11	144-8445	4	Bolt M10 X 45 - ISO 4014 - 10.9
5	144-9006	2	Distance Bushing				
6	144-7956	2	Washer M16 - ISO 7089				
7	144-7951	2	Nut, Self Lock M16 10.9 - ISO 10511				

Gearbox Assembly

47



Gearbox Assembly (continued)

<i>Ref.</i>	<i>Part Number</i>	<i>Qty.</i>	<i>Description</i>	<i>Ref.</i>	<i>Part Number</i>	<i>Qty.</i>	<i>Description</i>
1	144-8659	1	Lid Plate	26	144-8683	1	Guide
2	144-8660	1	Bearing Hub Ø42	27	144-8684	1	Threaded Rod M10X210
3	144-8661	1	Bearing Hub Ø55	28	144-8139	2	Nut M10 - Din 934
4	144-8662	6	Bonded Seal Ring M6	29	144-8685	1	Slider Block
5	144-8159	6	Bolt M6 X 16 - ISO 4017	30	144-8686	2	Roller Bearing
6	144-8663	1	Casted Gearbox Housing	31	144-8687	1	Roll Pin 6 X 50 - ISO 8752
7	144-8664	1	Window	32	144-8688	1	Lock Plate
8	144-8665	1	Gauge Decal	33	144-8689	4	Bolt M6 X 12 - Din 7991
9	144-8666	1	Shaft	34	144-8690	1	Indicator
10	144-8667	1	Washer	35	144-8691	1	Slider Bracket
11	144-8668	1	Shaft	36	144-8692	2	M5 X 10 — 10C
12	144-8669	2	Eccentric	37	144-8693	1	Knob M10 With Set Screw
13	144-8670	2	Shim Ø20XØ32X1.0 Din988	38	144-8074	2	Copper Washer 1_2
14	144-8671	1	Spacer	39	144-8694	2	Blind Plug G1/2
15	144-8672	2	Spring	40	144-8013	9	Washer-Large M8 - Din 9021
16	144-8673	2	Shim Ø30XØ42X1.0 Din988	41	144-7930	7	Spring Washer M8 - Din 127
17	144-8674	2	Circlip D=8 - Din 471	42	144-8130	7	Bolt M8 X 35 - ISO 4017
18	144-8675	2	Rocker Strip	43	144-7939	1	Washer M10 - ISO 7089
19	144-8676	2	Bearing Hk0808	44	144-8695	2	Bolt M8 X 10 - Din 7991
20	144-8677	2	Rocker Arm Assembly	45	144-8601	2	Closed Knob M8 - Din 6335
21	144-8678	2	Pin	46	144-8696	2	Parallel Pin ISO 8734 - 6 X 26
22	144-8679	2	Bearing 6004	47	144-8657	1	Casted Seeder Gearbox
23	144-8680	2	Bearing 6006				
24	144-8681	1	Oil Seal 30-45-8				
25	144-8682	1	Oil Seal 20-32-7				

Attachments and Accessories

For 46435 RapidSeed 430

Product Name	Model/Part
44lb Weight, AccuraSeed 620 or RapidSeed 430 and 590.....	46432
Wheel Kit	46436
Spiked Rear Roller.....	46437

Notes:

BULLS EYE™