



**Count on it.**

**Parts Catalog**

**Flex-Force Power System™  
60V MAX String Trimmer**

Model No. 51836—Serial No. 322000001 and Up



# Ordering Replacement Parts

To order replacement parts, please supply the part number, the quantity, and the description of each part desired.

## Understanding Reference Numbers

Each identified part in an illustration has a reference number. The reference number for a part also appears in the parts list, along with other information about the part.

This catalog uses two special reference number formats, one to indicate parts in a service assembly and another to indicate the quantity of a given part in an illustration.

## Service Assembly Reference Numbers

Parts in service assemblies have reference numbers in the form a:b. The a represents the reference number of the entire service assembly and the b represents a sequential number unique to each part within the service assembly.

For example, a wheel assembly might be identified by reference number 6, the tire by 6:1, the valve by 6:2, and the wheel by 6:3. When you order the assembly identified by reference number 6, you receive all parts identified by reference numbers 6:1, 6:2, and 6:3. However, you may also order any part individually. Reference numbers of this type appear in illustration and in parts lists.

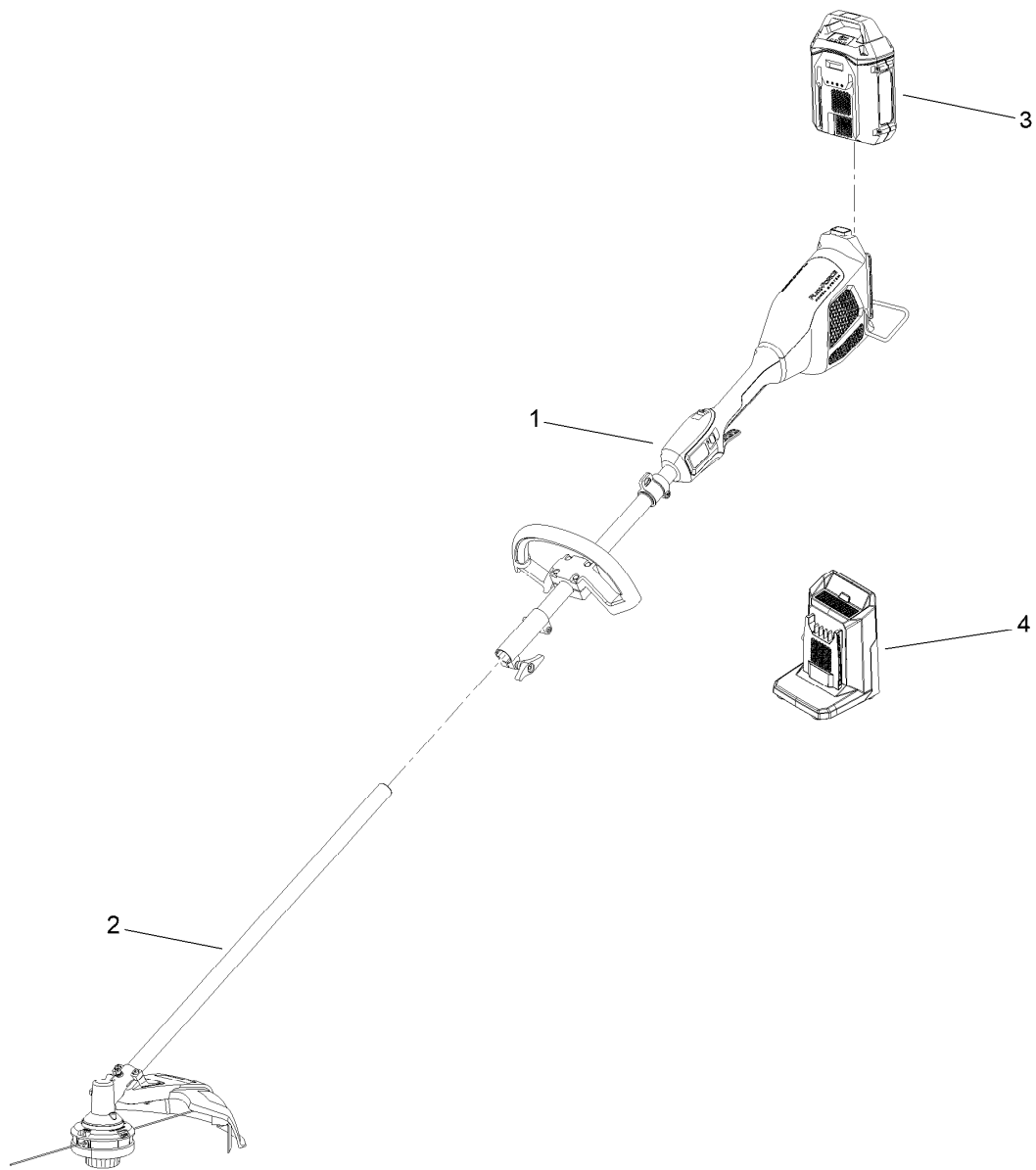
## Reference Numbers Indicating Quantity

In an illustration, if a reference number indicates more than one part, the reference number has the form nX y. The n represents the quantity of the part, the X is the multiplication symbol, and the y represents the reference number.

For example, in an illustration, the reference number 2X 37 means that two of the parts identified by reference number 37 are indicated.

# Contents

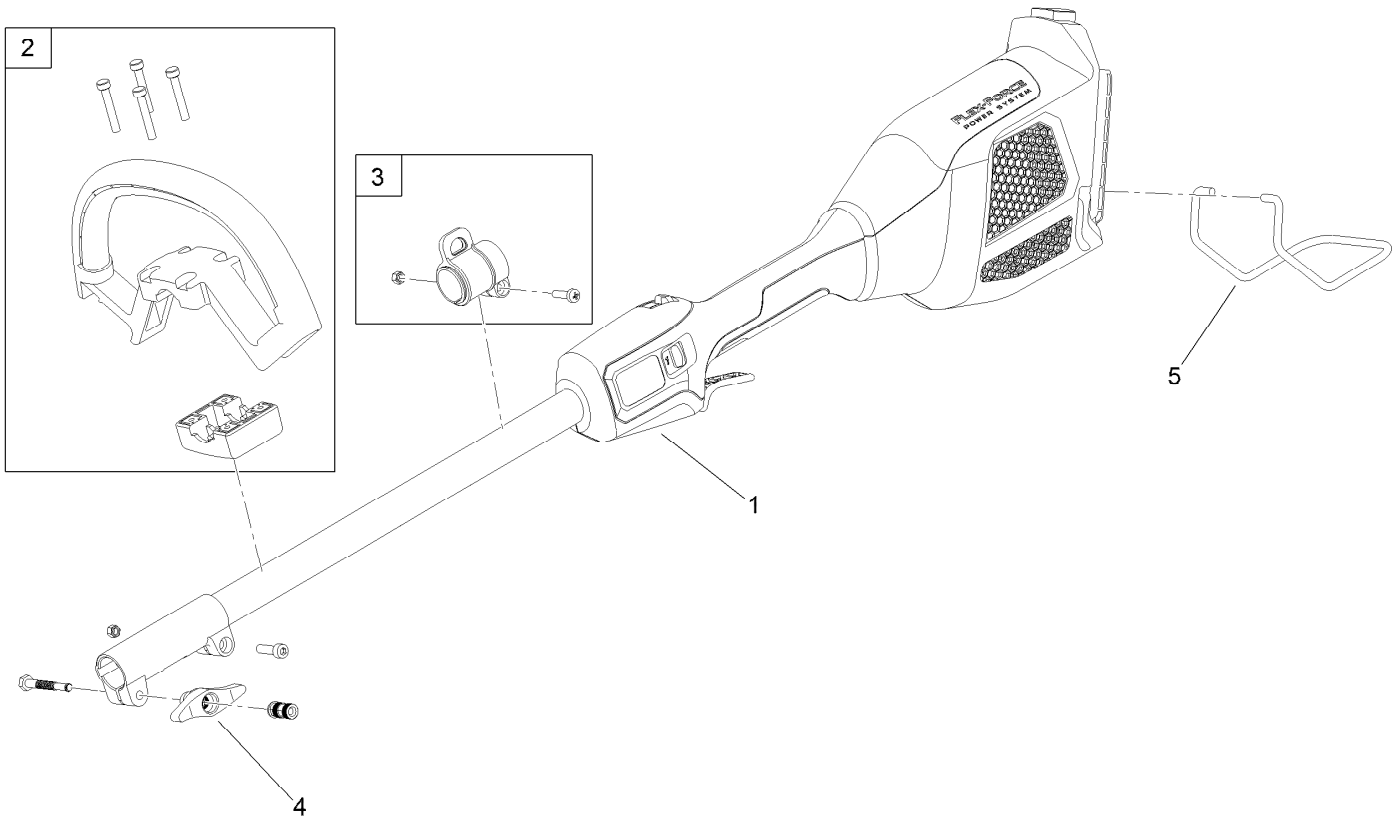
- Flex-Force Power System 60V MAX String Trimmer Assembly ..... 4
- Power Head Assembly ..... 5
- String Trimmer Assembly ..... 6
- Attachments and Accessories ..... 7



## Flex-Force Power System 60V MAX String Trimmer Assembly

<i>Ref.</i>	<i>Part Number</i>	<i>Qty.</i>	<i>Description</i>
1		1	Power Head ●
2		1	Trimmer Attachment ●
3	88625	1	Battery-Li Ion, 60V 2.5 Ah
4	88602	1	Charger-Battery, 60V 2 Amp

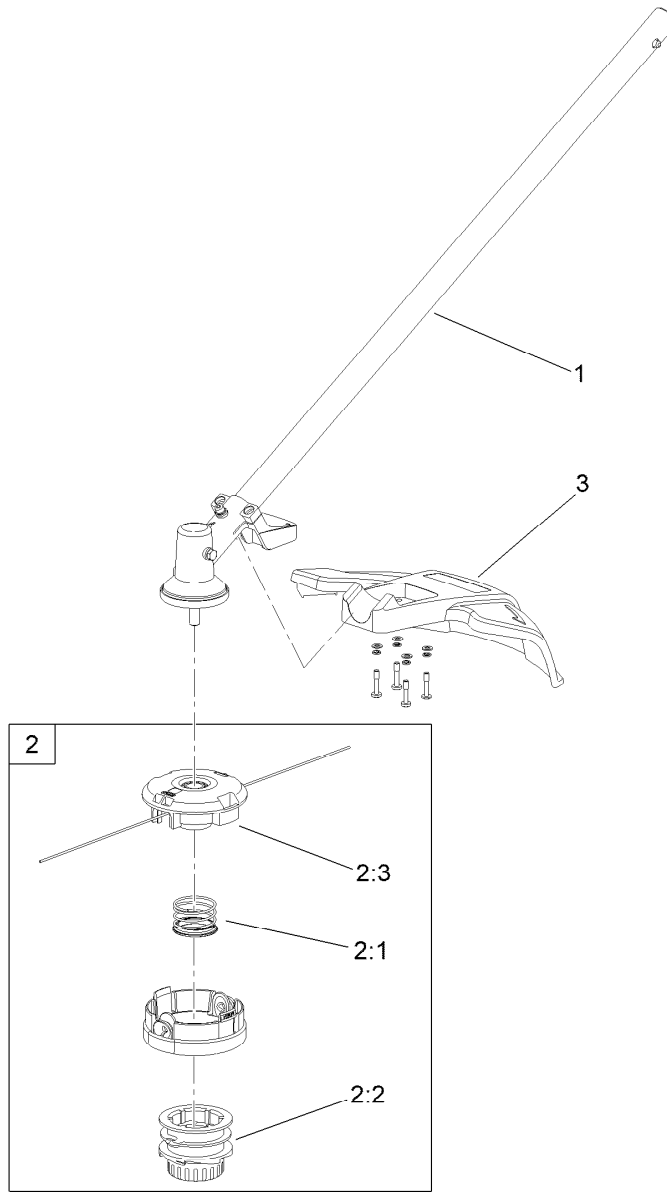
● Not serviced separately



## Power Head Assembly

<i>Ref.</i>	<i>Part Number</i>	<i>Qty.</i>	<i>Description</i>
1		1	Power Head ●
2	145-4866	1	Handle
3	145-4865	1	Collar-Harness
4	145-4867	1	Screw-Wing
5	145-4868	1	Stand

● Not serviced separately



## String Trimmer Assembly

Ref.	Part Number	Qty.	Description
1		1	Shaft ●
2	145-4858	1	Spool
2:1	139-8252	1	Spring-Spool
2:2	139-8253	1	Cap-Feed, Bump
2:3	139-8254	1	Spool
3	145-4863	1	Guard

● Not serviced separately

# Attachments and Accessories

## For 51836 Flex-Force Power System 60V MAX String Trimmer

<b>Product Name</b>	<b>Model/Part</b>
60V Attachment Capable Power Head Bare Tool.....	51810T
60V Battery Charger 2 AMP .....	88602
60V Rapid Battery Charger 5.4 AMP .....	88605
60V Battery Charger 1 AMP .....	88610
60V 2.0 AH Battery .....	88620
60V LI-ION Battery 2.5 AH.....	88625
60V LI-ION, Battery 4.0 AH .....	88640
60V LI-ION Battery 5.0 AH.....	88650
60V LI-ION Battery 6.0 AH.....	88660
60V LI-ION Battery 7.5 AH.....	88675
Edger Attachment for 60V Trimmer .....	88710
Hedge Trimmer Attachment for 60V Trimmer.....	88713
Pole Saw Attachment for 60V Trimmer .....	88714
Cultivator Attachment for 60V Trimmer.....	88715
14in and 16in Trimmer Attachment .....	88716



**Count on it.**