



**Count on it.**

**Parts Catalog**

**Floor Scraper  
e-Dingo 500 Compact Tool Carrier**

Model No. 22670—Serial No. 321000001 and Up



# Ordering Replacement Parts

To order replacement parts, please supply the part number, the quantity, and the description of each part desired.

## Understanding Reference Numbers

Each identified part in an illustration has a reference number. The reference number for a part also appears in the parts list, along with other information about the part.

This catalog uses two special reference number formats, one to indicate parts in a service assembly and another to indicate the quantity of a given part in an illustration.

## Service Assembly Reference Numbers

Parts in service assemblies have reference numbers in the form a:b. The a represents the reference number of the entire service assembly and the b represents a sequential number unique to each part within the service assembly.

For example, a wheel assembly might be identified by reference number 6, the tire by 6:1, the valve by 6:2, and the wheel by 6:3. When you order the assembly identified by reference number 6, you receive all parts identified by reference numbers 6:1, 6:2, and 6:3. However, you may also order any part individually. Reference numbers of this type appear in illustration and in parts lists.

## Reference Numbers Indicating Quantity

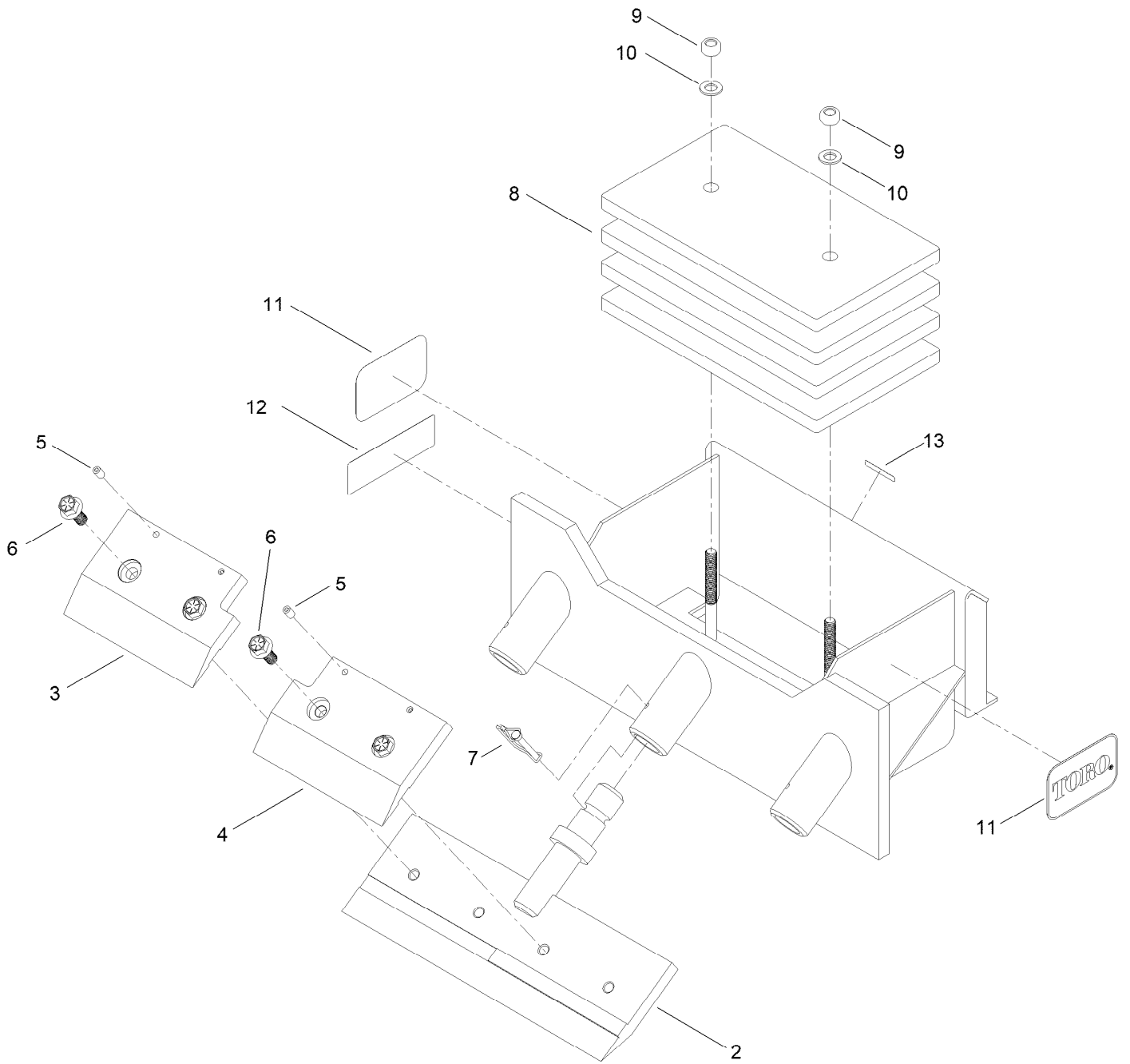
In an illustration, if a reference number indicates more than one part, the reference number has the form nX y. The n represents the quantity of the part, the X is the multiplication symbol, and the y represents the reference number.

For example, in an illustration, the reference number 2X 37 means that two of the parts identified by reference number 37 are indicated.

# Contents

Scraper Attachment Assembly .....	4
Attachments and Accessories .....	6

# Scraper Attachment Assembly



## Scraper Attachment Assembly (continued)

<i>Ref.</i>	<i>Part Number</i>	<i>Qty.</i>	<i>Description</i>	<i>Ref.</i>	<i>Part Number</i>	<i>Qty.</i>	<i>Description</i>
2	145-4936	1	Base-Holder, Blade	8	145-4929	4	Weight
3	145-4934	1	Clamp-Holder, 24" Blade	9	138-3092	2	Nut-Hex
4	145-4933	1	Clamp-Holder, 24" Blade	10	AU495-11081	2	Washer-Flat
5	57-5190	4	Screw-Set, HSH	11	105-9751	2	Decal
6	145-4930	4	Bolt-Blade Holder	12	145-4939	1	Decal-Safety, Scraper
7	145-4932	1	Pin-Retention	13	133-8061	1	Decal-Warning

# Attachments and Accessories

## For 22670 Floor Scraper e-Dingo 500 Compact Tool Carrier

<b>Product Name</b>	<b>Model/Part</b>
24" Blade-Scraping, Heavy Duty .....	145-4935
Holder-Blade.....	145-4959
Tool-Removal, Ceramic .....	145-4960
Tool-Removal, Ceramic .....	145-4961
Tooth-Carbide, Replacement.....	145-4962
8" Blade-Scraping.....	145-4963
12" Blade-Scraping.....	145-4964
12" Blade-Scraping, Double-Edge.....	145-4965
12" Blade-Scraping, Heavy Duty .....	145-4966
24" Blade-Scraping, Double-Edge.....	145-4967
10" Blade-Carpet, 90° Wings .....	145-4968
10" Blade-Carpet, 90° Wings .....	145-4969
22" Blade-Carpet, 90° Wings .....	145-4970
22" Blade-Carpet, 90° Wings .....	145-4971

**Notes:**



**Count on it.**