



Count on it.

Parts Catalog

**48in Blower and Drive Kit
E-Z Vac™ Standard Bagger for TITAN® HD
1500 or 2000 Series Riding Mower**

Model No. 78401—Serial No. 410120000 and Up



Ordering Replacement Parts

To order replacement parts, please supply the part number, the quantity, and the description of each part desired.

Understanding Reference Numbers

Each identified part in an illustration has a reference number. The reference number for a part also appears in the parts list, along with other information about the part.

This catalog uses two special reference number formats, one to indicate parts in a service assembly and another to indicate the quantity of a given part in an illustration.

Service Assembly Reference Numbers

Parts in service assemblies have reference numbers in the form a:b. The a represents the reference number of the entire service assembly and the b represents a sequential number unique to each part within the service assembly.

For example, a wheel assembly might be identified by reference number 6, the tire by 6:1, the valve by 6:2, and the wheel by 6:3. When you order the assembly identified by reference number 6, you receive all parts identified by reference numbers 6:1, 6:2, and 6:3. However, you may also order any part individually. Reference numbers of this type appear in illustration and in parts lists.

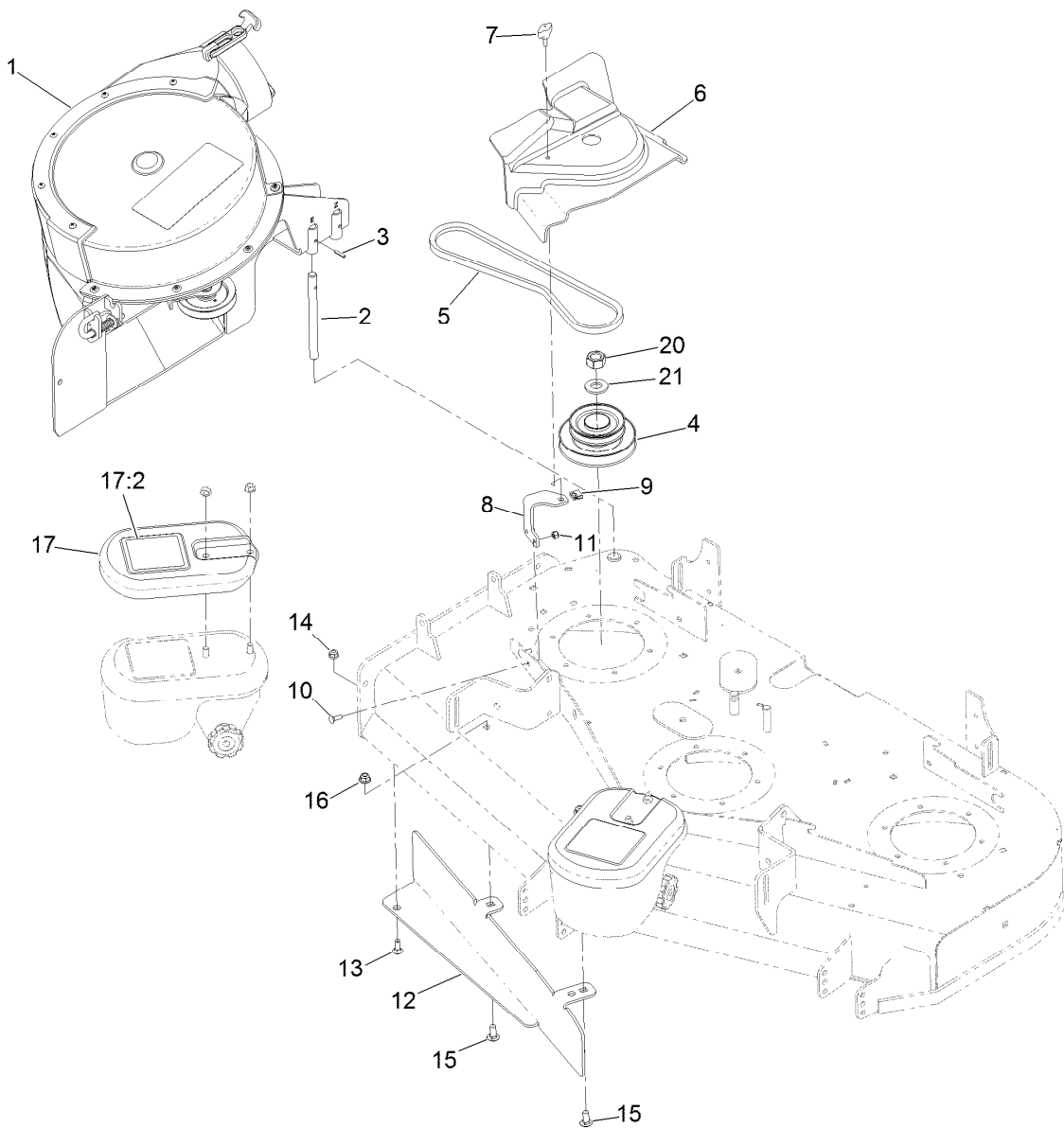
Reference Numbers Indicating Quantity

In an illustration, if a reference number indicates more than one part, the reference number has the form nX y. The n represents the quantity of the part, the X is the multiplication symbol, and the y represents the reference number.

For example, in an illustration, the reference number 2X 37 means that two of the parts identified by reference number 37 are indicated.

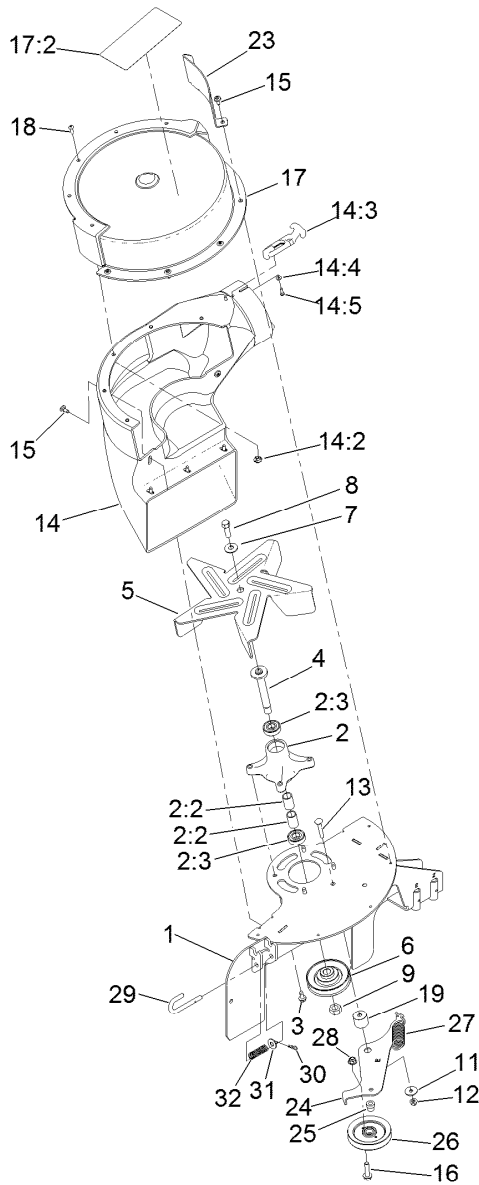
Contents

48in Blower and Drive Assembly 4
Blower Assembly No. 135-4482 5



48in Blower and Drive Assembly

<i>Ref.</i>	<i>Part Number</i>	<i>Qty.</i>	<i>Description</i>	<i>Ref.</i>	<i>Part Number</i>	<i>Qty.</i>	<i>Description</i>
1	135-4482	1	Blower ASM	11	3296-42	2	Nut-Lock, NI
2	1-353050	1	Shaft-Catcher, Grass	12	120-3249-01	1	Baffle-Bagger
3	1-806323	1	Pin-Roll	13	3230-16	1	Screw-CARR
4	126-7715	1	Drive-Jackshaft	14	104-8300	1	Nut-HF, NI
5	121-3224	1	Belt-V	15	3231-27	2	Screw-CARR
6	135-5244	1	Cover-Belt	16	104-8301	2	Nut-HF, NI
7	98-8332	1	Knob	17	126-9684	2	Weight
8	115-3637-01	1	Bracket-Cover, Belt	17:2	126-4662	1	Decal-Warning, Traction
9	609900	1	Nut-Speed	20	116-7306	1	Nut-Hex
10	3229-1	2	Screw-CARR	21	103-2802	1	Washer



Blower Assembly No. 135-4482

Ref.	Part Number	Qty.	Description	Ref.	Part Number	Qty.	Description
1	135-4483-03	1	Support-Blower	14:5	3290-500	4	Screw-PPH
2	139-3214	1	Spindle ASM	15	120-7950	10	Screw-Torx
2:2	120-7935	2	Spacer	16	114-4681	1	Screw-HHF
2:3	138-9770	2	Bearing-Ball	17	137-5003	1	Blower Cover ASM
3	32144-70	4	Screw-HWHTF	17:2	136-4164	1	Decal-Danger
4	137-7009	1	Shaft-Spindle	18	3258-166	5	Screw-PRH
5	133-4336	1	Fan-Blower	19	135-4488	1	Spacer-Stepped
6	135-3436	1	Sheave-Offset	23	136-9213-03	1	Guard-Blower
7	3290-465	1	Washer-Belleville	24	135-4486	1	Arm-Idler
8	108-8823	1	Screw-HH	25	1-653367	1	Spacer-Hub
9	3219-16	1	Nut-Hex	26	103-0483	1	Flat-Idler
11	5-4460	1	Washer-Pivot	27	1-653331	1	Spring-Idler
12	104-8300	1	Nut-HF, NI	28	104-8301	1	Nut-HF, NI
13	127-6841	1	Screw-CARR	29	116-4356	1	Pin-Latch
14	135-5461	1	Blower Chute ASM	30	3290-307	1	Screw-Cotter
14:2	136-9187	5	Insert-T-Nut	31	3256-4	1	Washer-Flat
14:3	103-4080	2	Latch-Rubber ●	32	121-3249	1	Spring-Compression
14:4	9202704	4	Washer-Flat				

● Kit No. 103-4188 - Contains catch, rubber latch, and mounting hardware

Notes:

Notes:



Count on it.