



Shim Tensioner Kit

Groundsmaster® 3200 or 3300 Series Traction Unit

Model No. 144-4045

Installation Instructions

Installation

Loose Parts

Use the chart below to verify that all parts have been shipped.

Description	Qty.	Use
No parts required	—	Prepare the machine.
Pivot shim	1	Install the kit.
Flange-head bolt (3/8 x 1-1/4 inches)	2	
Locknut (3/8 inch)	2	

Preparing the Machine

1. Park the machine on a level surface.
2. Engage the parking brake.
3. Lower the cutting unit.
4. Shut off the engine and remove the key.

Installing the Kit

1. Using a ratchet, release the tension from the traction belt (Figure 1).
2. Remove the belt from the idler pulley (Figure 1).

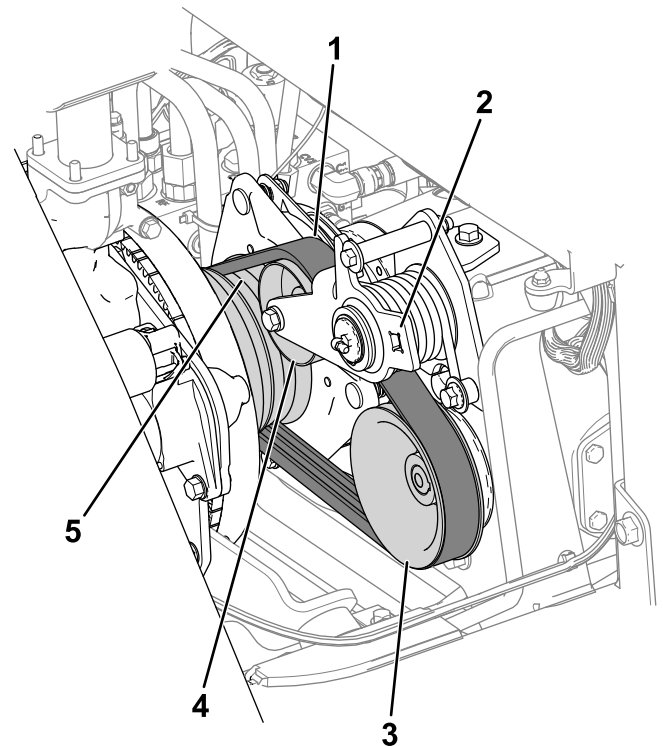


Figure 1

- | | |
|-----------------------------|------------------|
| 1. Traction belt | 4. Idler pulley |
| 2. Insert the ratchet here. | 5. Engine pulley |
| 3. Pump pulley | |

g300570



3. Loosen the flange-head bolt (3/8 x 1 inch) securing the top of the idler-pivot assembly to the pump-mount bracket (Figure 2).
4. Remove the existing 2 bolts and 2 nuts securing the bottom of the idler-pivot assembly to the pump-mount bracket (Figure 2).

Discard the 2 bolts and 2 nuts.

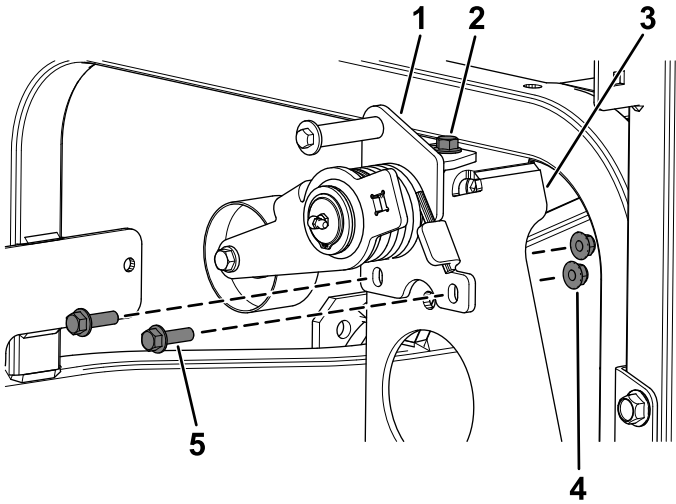
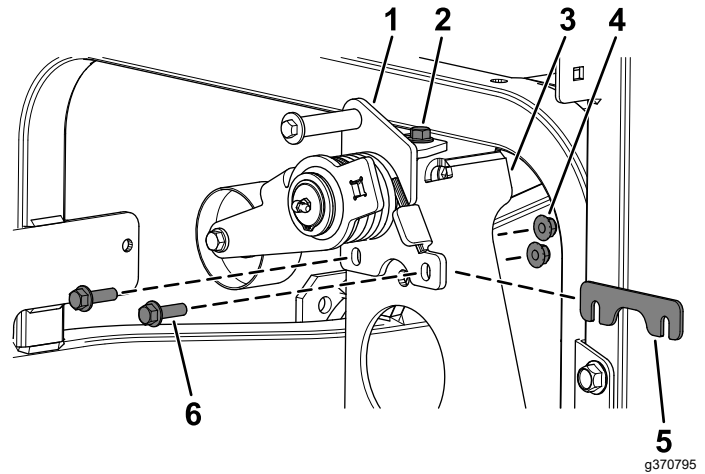


Figure 2

g370796

- | | |
|-------------------------|----------|
| 1. Idler-pivot assembly | 4. Nuts |
| 2. Loosen this bolt. | 5. Bolts |
| 3. Pump-mount bracket | |

5. Secure the pivot shim behind the idler-pivot assembly and pump-mount bracket using 2 flange-head bolts (3/8 x 1-1/4 inches) and 2 locknuts (3/8 inch) as shown in Figure 3.
6. Tighten the flange-head bolt (3/8 x 1 inch) securing the top of the idler-pivot assembly to the pump-mount bracket (Figure 3).



g370795

Figure 3

- | | |
|-------------------------|--|
| 1. Idler-pivot assembly | 4. Locknut (3/8 inch) |
| 2. Tighten this bolt. | 5. Pivot shim |
| 3. Pump-mount bracket | 6. Flange-head bolt (3/8 x 1-1/4 inches) |

7. Install the belt onto the idler pulley (Figure 1).