



Electric Winch Kit

Twister Utility Vehicle

Model No. 19053

Parts Catalog

Ordering Replacement Parts

To order replacement parts, please supply: the part number, the quantity, and the description of each part desired.

Understanding Reference Numbers

Each identified part in an illustration has a reference number. The reference number for a part also appears in the parts list, along with other information about the part.

This catalog uses two special reference number formats, one to indicate parts in a service assembly and another to indicate the quantity of a given part in an illustration.

Service Assembly Reference Numbers

Parts in service assemblies have reference numbers in the form **a:b**. The **a** represents the reference number of the entire service assembly and the **b** represents a sequential number unique to each part within the service assembly.

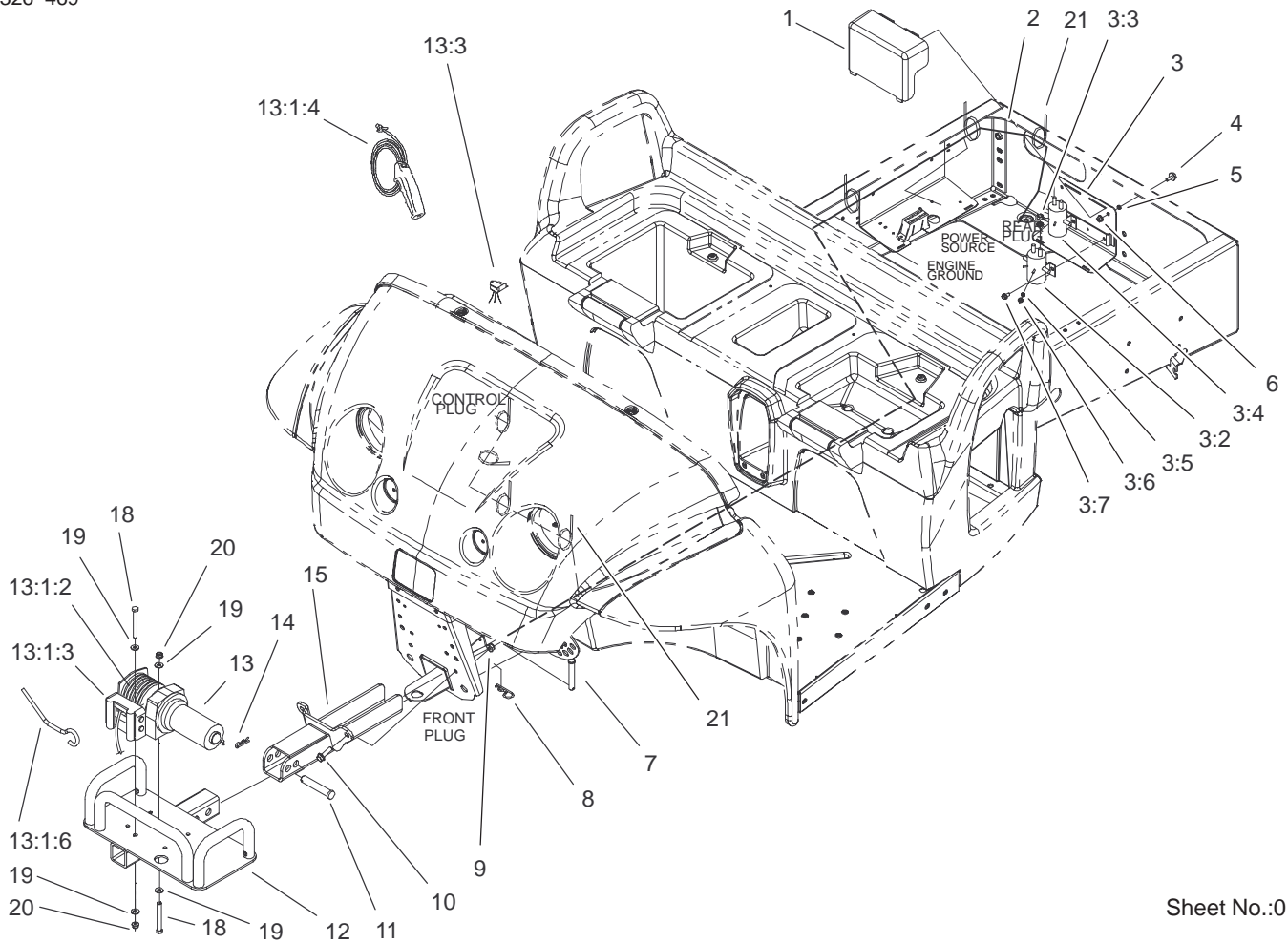
For example, a wheel assembly might be identified by reference number **6**, the tire by **6:1**, the valve by **6:2**, and the wheel by **6:3**. When you order the assembly identified by reference number **6**, you receive all parts identified by reference numbers **6:1**, **6:2**, and **6:3**. However, you may also order any part individually.

Reference numbers of this type appear in illustrations and in part lists.

Reference Numbers Indicating Quantity

In an illustration, if a reference number indicates more than one part, the reference number has the form **nX y**. The **n** represents the quantity of the part, the **X** is the multiplication symbol, and the **y** represents the reference number.

For example, in an illustration, the reference number **2X 37** means that two of the parts identified by reference number **37** are indicated.



Sheet No.:0

Electrical Winch Assembly

Ref. No.	Part No.	Qty.	Description
1	104-6665	1	Cover-Solenoid
2	104-6685	1	Harness-Winch ASM
☆3		1	Solenoid Sub ASM
3:2	100-1536	2	Solenoid-12 Volt Dc
3:3	3219-2	8	Nut-Hex
3:4	3255-8	8	Washer-Lock/Ext
3:5	3255-17	4	Washer-Lock/Ext
3:6	3219-14	4	Nut-Hex
3:7	32144-4	4	Screw-HWH
4	3234-4	2	Screw-HHF
5	87-6610	2	Spacer
6	32128-32	2	Nut-HHF
7	283-55	1	Pin-Clevis
8	92-2762	1	Pin-Hair
9	104-8301	2	Nut-Flange, NI
10	3234-24	2	Screw-HHF
11	283-78	1	Pin-Clevis
12	99-7933-03	1	Mount-Winch
13	104-6748	1	Winch ASM
☆13:1		1	Winch ASM
13:1:2	104-6733	1	50' Cable-W/Hook, 5/32"
13:1:3	104-6734	1	Roller-Fairlead
13:1:4	104-6735	1	Control-Remote, Handheld 12'
13:1:6	104-6738	1	Bar-Handsaver

Ref. No.	Part No.	Qty.	Description
13:3	104-6747	1	Connector, Socket Half ASM
14	3290-355	1	Pin-Hair
15	99-7907-03	1	Lower Front Winch Receiver ASM
18	322-14	2	Screw-HH
19	3256-2	4	Washer-Flat
20	104-8300	2	Nut-Flange, NI
21	3290-378	9	Tie-Cable

☆ Not serviced separately