



Trimmer Mount Kit

Z Master® Professional 2000 Series Riding Mower

Model No. 145-3689

Installation Instructions

Installation

Loose Parts

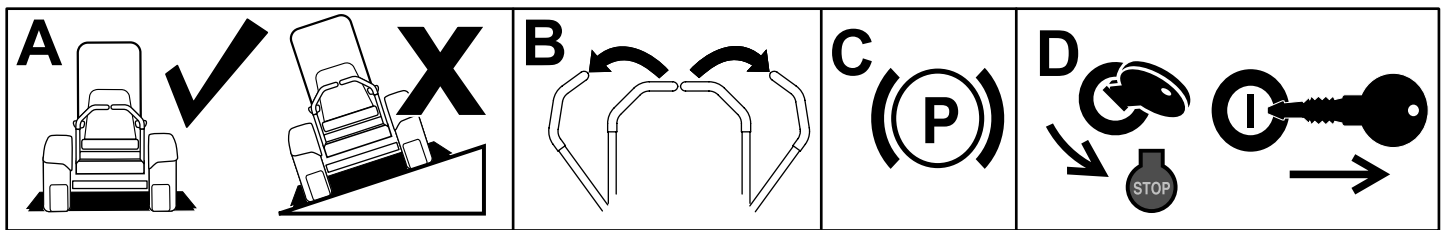
Use the chart below to verify that all parts have been shipped.

Description	Qty.	Use
No parts required	–	Prepare the machine.
Rear bracket	1	Assemble the kit.
Nut (1/4 inch)	6	
Large backer plate	1	
Large fist clamp	1	
Large fist-clamp bracket	1	
Bolt (1/4 x 5/8 inch)	2	
Bolt (1/4 x 1-1/2 inches)	2	
Bolt (1/4 x 1-1/4 inches)	2	
Small fist clamp	1	
Small backer plate	1	
Carriage bolt (5/16 x 7/8 inch)	3	
Small fist-clamp bracket	1	
Trimmer plate	1	
Nut (5/16 inch)	2	
Channel bracket	1	
Mount plate	1	
Knob	1	
Bolt (3/8 x 7/8 inch)	2	Mount the kit to the machine.
Nut (3/8 inch)	2	
Carriage bolt (3/8 x 3 inches)	1	
Wide-flange nut (3/8 inch)	1	
Right pod support bracket—2021 and newer machines only	1	
Thread-forming screw (3/8 x 1 inch)—2021 and newer machines only	2	
No parts required	–	Secure a trimmer to the mount assemblies.



Preparing the Machine

1. Park the machine on a level surface.
2. Move the motion-control levers to the NEUTRAL-LOCK position.
3. Engage the parking brake.
4. Shut off the engine and remove the key.



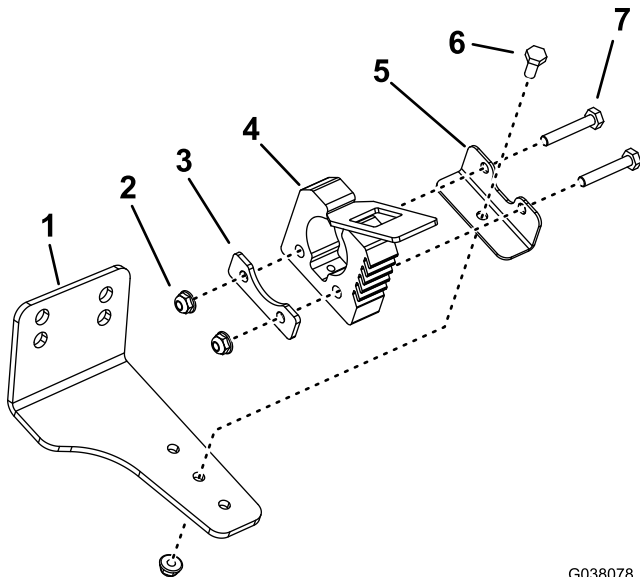
g037289
g037289

Figure 1

Assembling the Kit

1. Assemble the rear mount assembly (Figure 2).

Note: Mount the large fist-clamp bracket in 1 of the 3 holes to allow clearance between the trimmer engine and the machine when the trimmer is mounted.



G038078
g038078

Figure 2

- | | |
|-----------------------|------------------------------|
| 1. Rear bracket | 5. Large fist-clamp bracket |
| 2. Nut (1/4 inch) | 6. Bolt (1/4 x 5/8 inch) |
| 3. Large backer plate | 7. Bolt (1/4 x 1-1/2 inches) |
| 4. Large fist clamp | |

2. Assemble the front mount assembly as shown in [Figure 3](#) or [Figure 4](#).

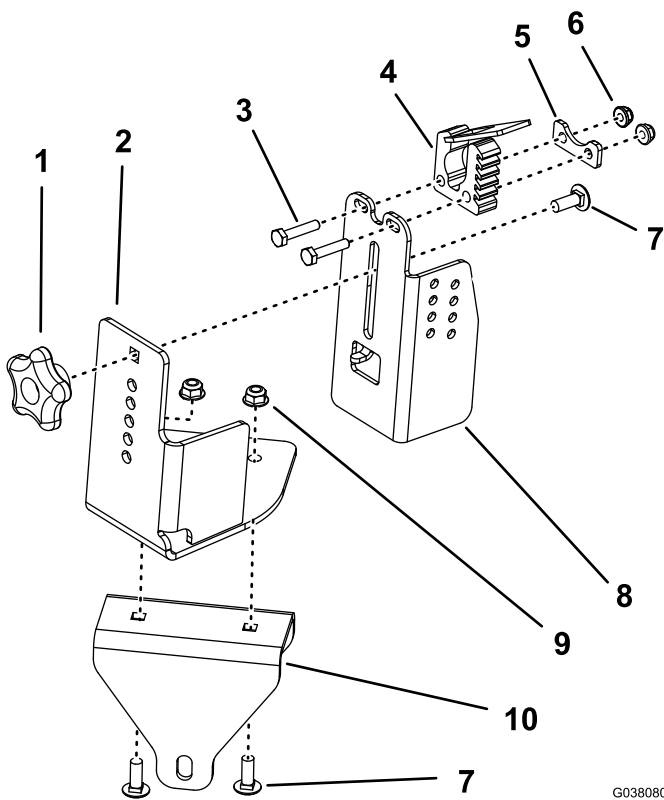
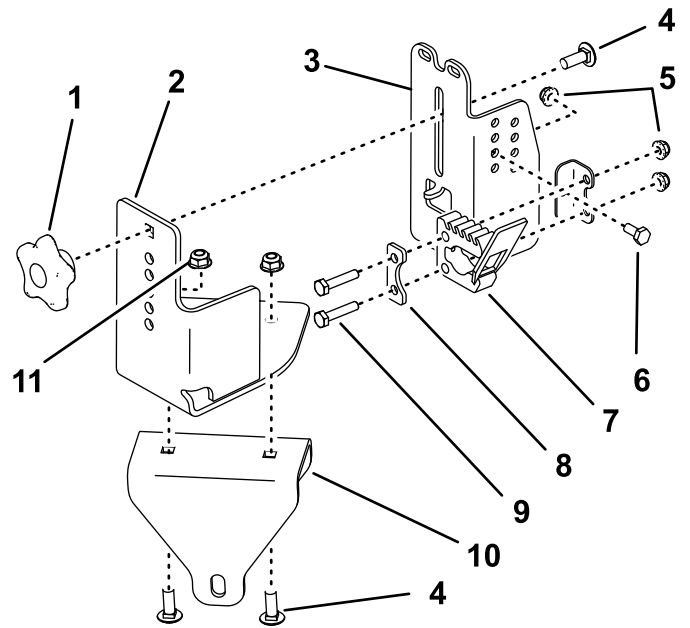


Figure 3

Assembly for Trimmers with a Straight Shaft

G038080
g038080

- | | |
|----------------------------|------------------------------------|
| 1. Knob | 6. Nut (1/4 inch) |
| 2. Mount plate | 7. Carriage bolt (5/16 x 7/8 inch) |
| 3. Bolt (1/4 x 1-1/4 inch) | 8. Trimmer plate |
| 4. Small fist clamp | 9. Nut (5/16 inch) |
| 5. Small backer plate | 10. Channel bracket |



G038091
g038091

Figure 4

Assembly for Trimmers with a Curved Shaft

- | | |
|------------------------------------|----------------------------|
| 1. Knob | 7. Small fist clamp |
| 2. Mount plate | 8. Small backer plate |
| 3. Trimmer plate | 9. Bolt (1/4 x 1-1/4 inch) |
| 4. Carriage bolt (5/16 x 7/8 inch) | 10. Channel bracket |
| 5. Nut (1/4 inch) | 11. Nut (5/16 inch) |
| 6. Bolt (1/4 x 5/8 inch) | |

Mounting the Kit to the Machine

1. For 2021 and newer machines only, do the following:

A. Remove the 2 torx-head screws (1/4 x 1-5/16 inches) and 2 locknuts (1/4 inch) from the right pod (Figure 5).

Retain the 2 torx-head screws (1/4 x 1-5/16 inches) and 2 locknuts (1/4 inch).

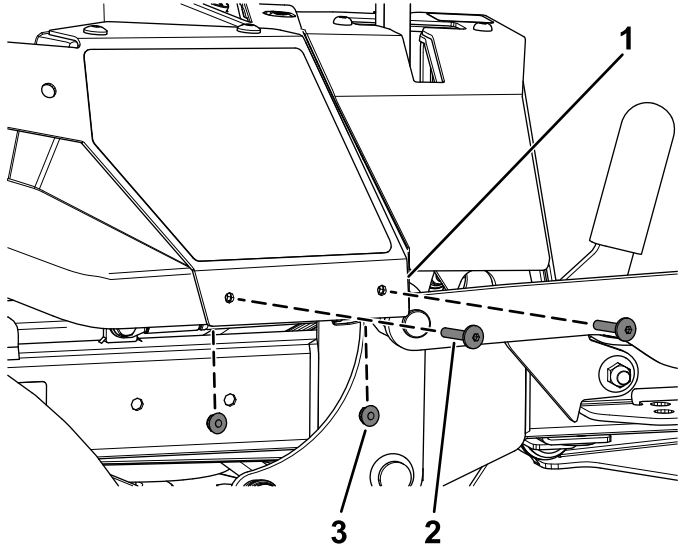


Figure 5

- 1. Right pod
- 2. Torx-head screw (1/4 x 1-5/16 inches)
- 3. Locknut (1/4 inch)

B. Secure the right pod support bracket using the 2 new thread-forming screws (3/8 x 1 inch) and the previously removed 2 torx-head screws (1/4 x 1-5/16 inches) and 2 locknuts (1/4 inch) as shown in Figure 6.

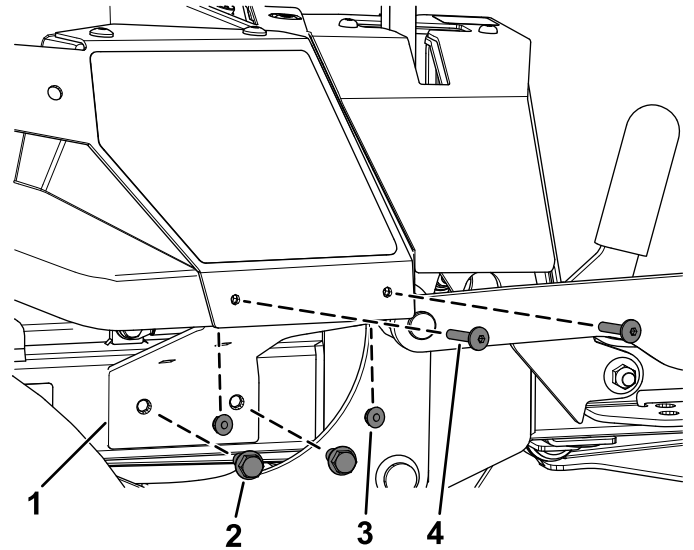


Figure 6

- 1. Right pod support bracket
- 2. Thread-forming screw (3/8 x 1 inch)
- 3. Previously removed locknut (1/4 inch)
- 4. Previously removed torx-head screw (1/4 x 1-5/16 inches)

2. Install the rear mount assembly to the right side panel on the machine using 2 bolts (3/8 x 7/8 inch) and 2 nuts (3/8 inch) as shown in **Figure 7**.

Note: Use the 2 front holes if you are mounting a curved trimmer.

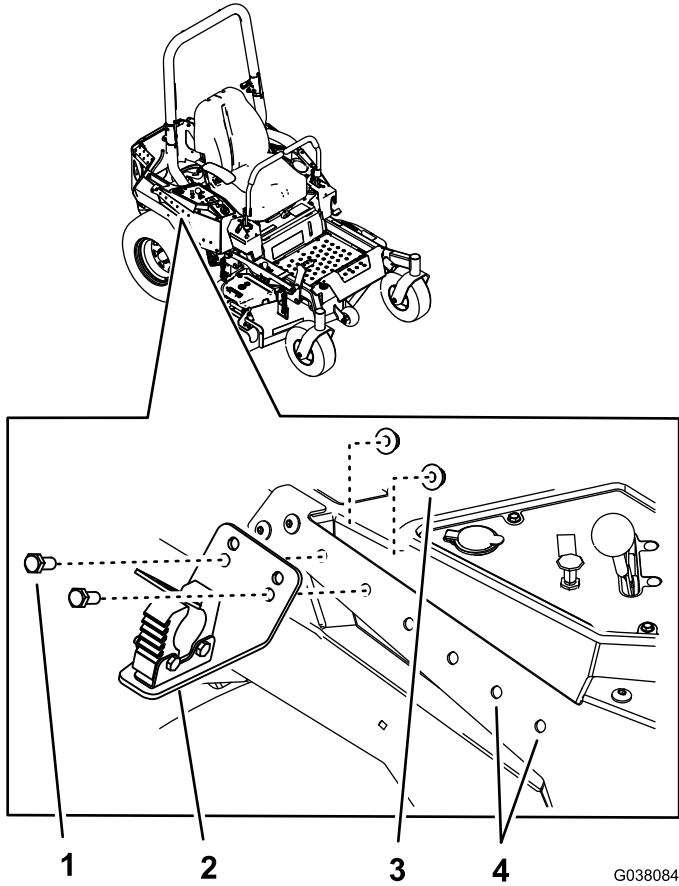


Figure 7

- | | |
|--------------------------|--|
| 1. Bolt (3/8 x 7/8 inch) | 3. Nut (3/8 inch) |
| 2. Rear mount assembly | 4. Use these holes if you are mounting a curved trimmer. |

3. Install the front mount assembly over the frame, near the right caster wheel, using the wide-flange nut (3/8 inch) and carriage bolt (3/8 x 3 inches) as shown in **Figure 8**.

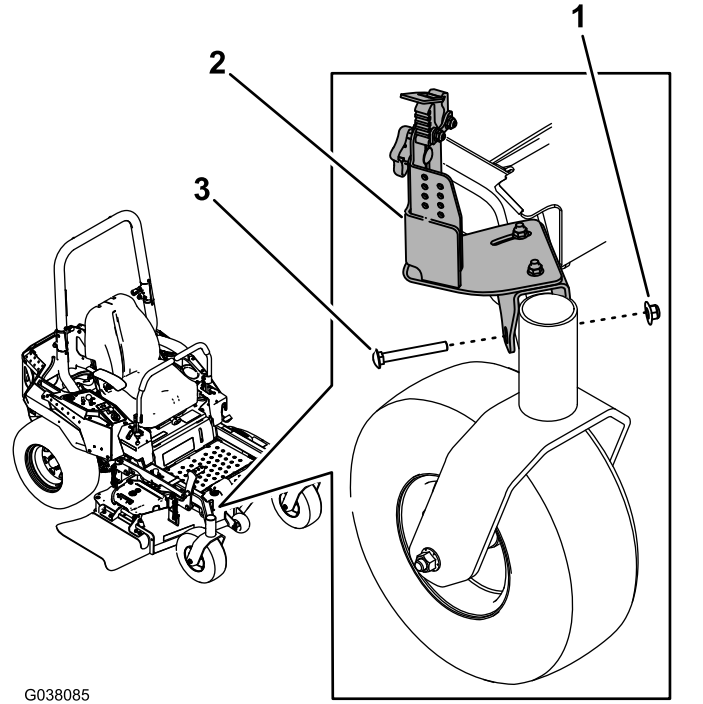


Figure 8

- | | |
|-------------------------------|-----------------------------------|
| 1. Wide-flange nut (3/8 inch) | 3. Carriage bolt (3/8 x 3 inches) |
| 2. Front mount assembly | |

Securing a Trimmer to the Mount Assemblies

1. Secure the rear end of the trimmer to the rear mount assembly using the large fist clamp.
2. Loosen the bolts securing the mount plate to the channel bracket in the front mount assembly (Figure 9).

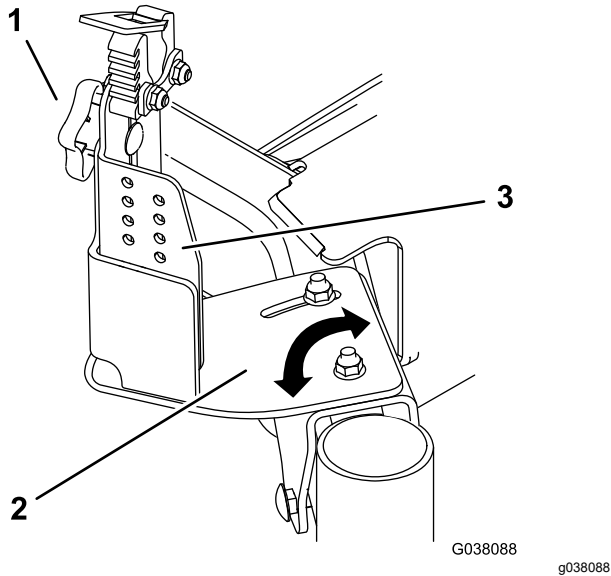


Figure 9

1. Knob
2. Mount plate
3. Trimmer plate

-
3. Pivot the plate so that the small fist clamp lines up with the trimmer. Tighten the bolts.
 4. Loosen the knob and raise or lower the trimmer plate as necessary (Figure 9). Tighten the knob.
 5. Secure the front end of the trimmer to the front mount assembly using the fist clamp.

Notes:



Count on it.