



**Count on it.**

**Parts Catalog**

**E-Z Vac™ Standard Bagger  
Zero Turn Radius Riding Mower**

Model No. 78481—Serial No. 407090000 and Up



# Ordering Replacement Parts

To order replacement parts, please supply the part number, the quantity, and the description of each part desired.

## Understanding Reference Numbers

Each identified part in an illustration has a reference number. The reference number for a part also appears in the parts list, along with other information about the part.

This catalog uses two special reference number formats, one to indicate parts in a service assembly and another to indicate the quantity of a given part in an illustration.

## Service Assembly Reference Numbers

Parts in service assemblies have reference numbers in the form a:b. The a represents the reference number of the entire service assembly and the b represents a sequential number unique to each part within the service assembly.

For example, a wheel assembly might be identified by reference number 6, the tire by 6:1, the valve by 6:2, and the wheel by 6:3. When you order the assembly identified by reference number 6, you receive all parts identified by reference numbers 6:1, 6:2, and 6:3. However, you may also order any part individually. Reference numbers of this type appear in illustration and in parts lists.

## Reference Numbers Indicating Quantity

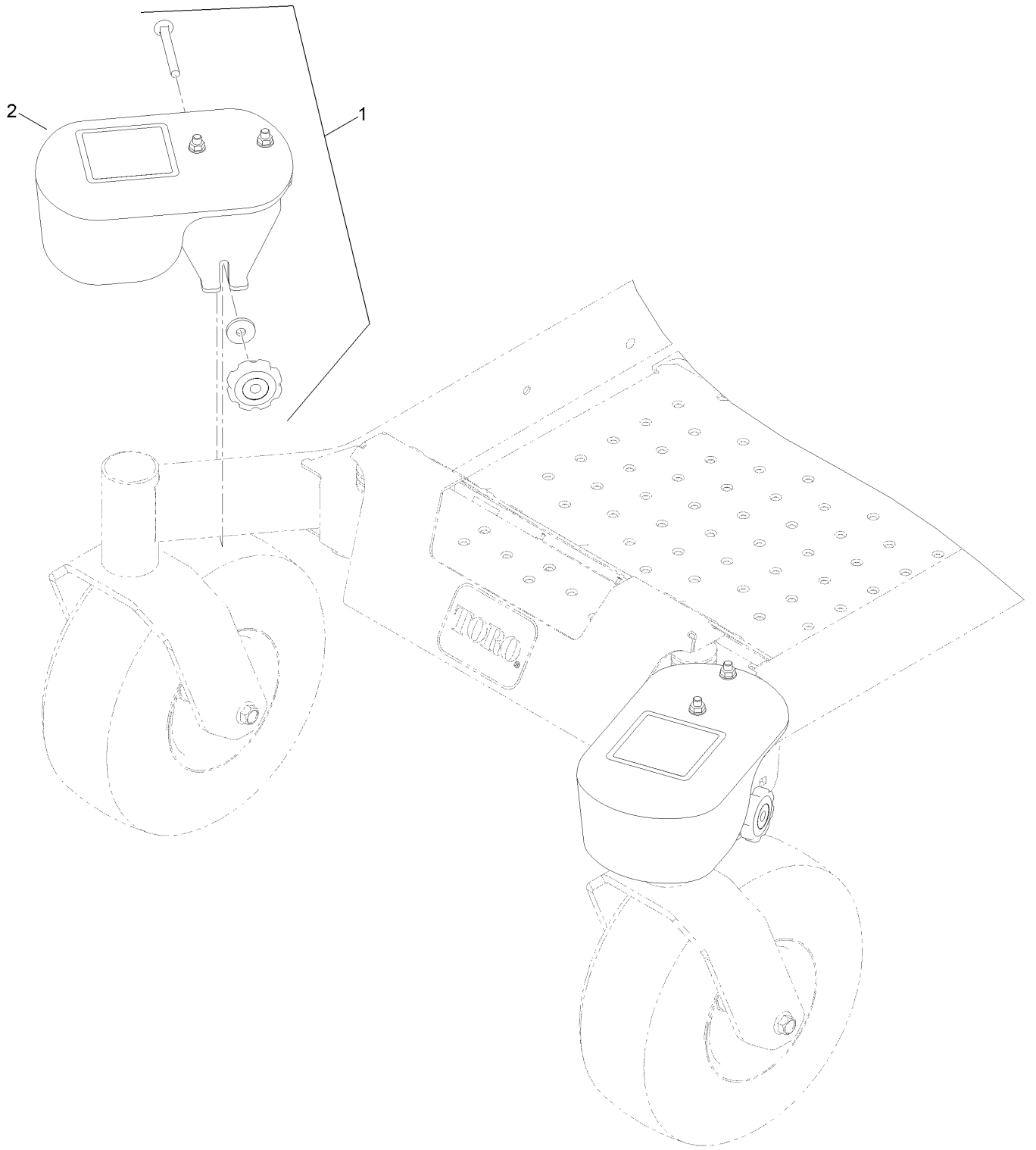
In an illustration, if a reference number indicates more than one part, the reference number has the form nX y. The n represents the quantity of the part, the X is the multiplication symbol, and the y represents the reference number.

For example, in an illustration, the reference number 2X 37 means that two of the parts identified by reference number 37 are indicated.

# Contents

- Caster Weight Assembly ..... 4
- Caster Weight Kit No. 126-8639 ..... 6
- Bagger and Hood Assembly ..... 8
- Bag Assembly No. 116-0754 ..... 10
- Bagger Hood Assembly No. 121-3215 ..... 12

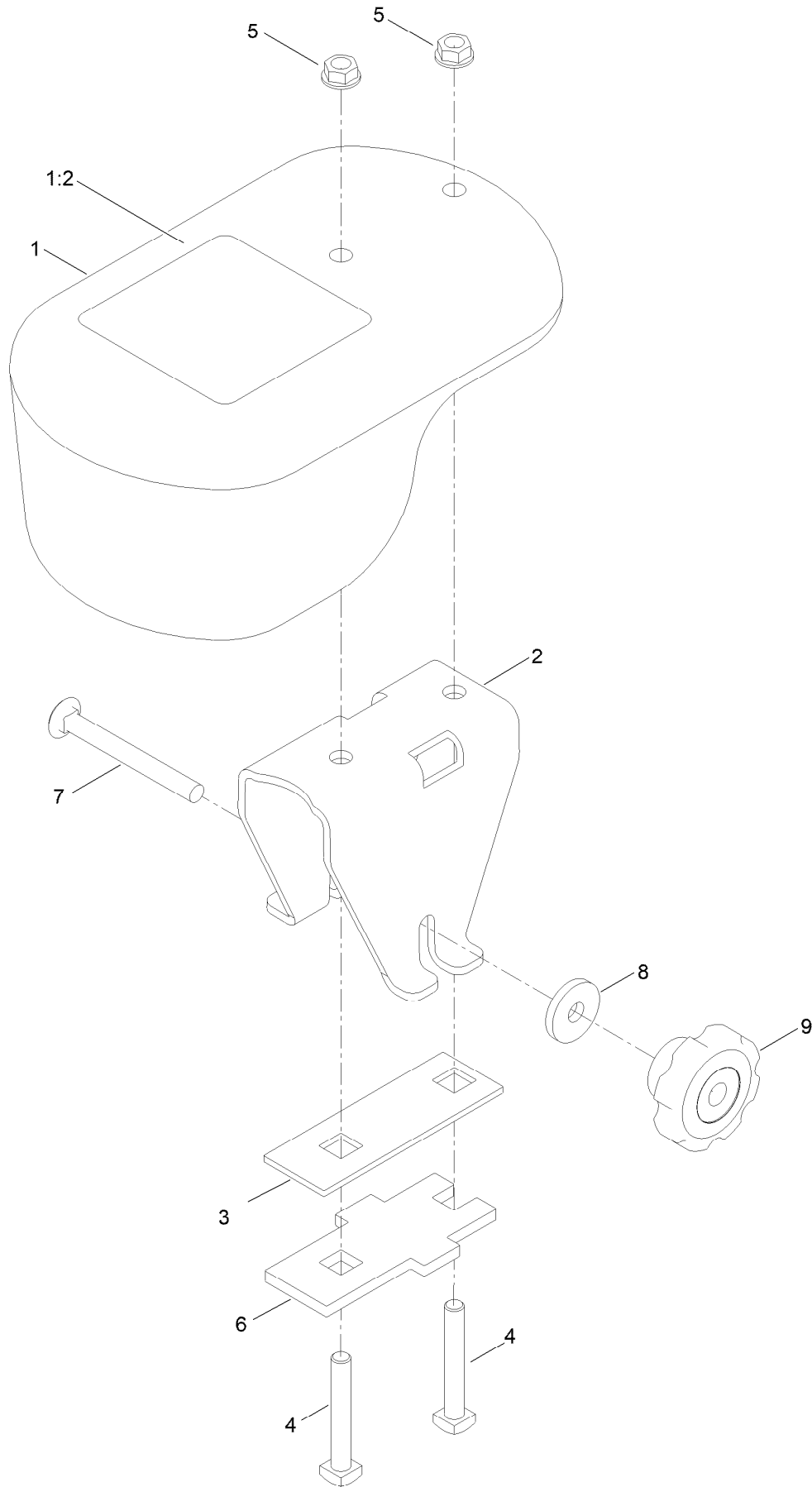
# Caster Weight Assembly



## Caster Weight Assembly (continued)

<i>Ref.</i>	<i>Part Number</i>	<i>Qty.</i>	<i>Description</i>
1	126-8639	1	Caster Weight Set Kit 87#
2	126-7640	2	Caster Weight ASM

# Caster Weight Kit No. 126-8639

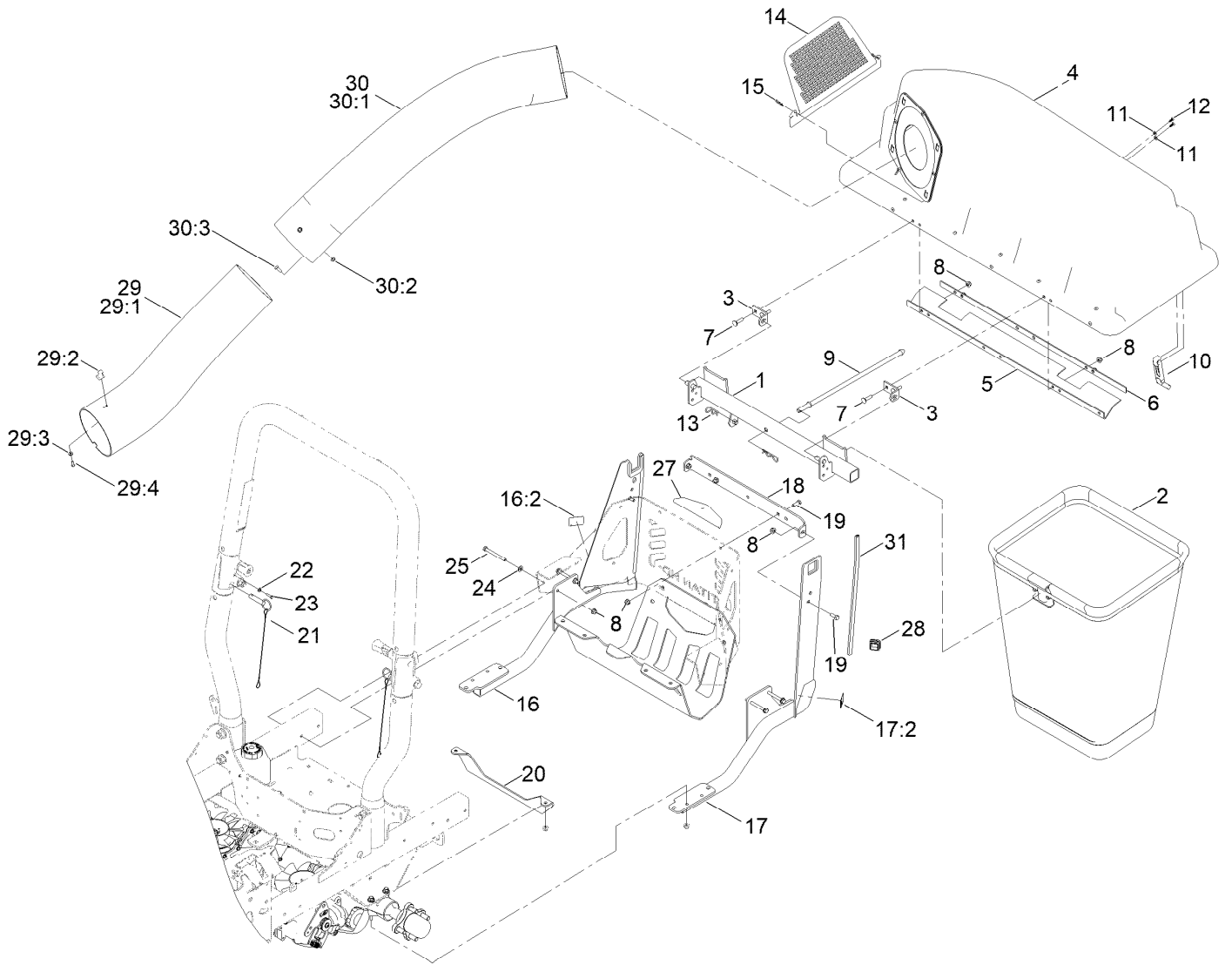


## Caster Weight Kit No. 126-8639 (continued)

<i>Ref.</i>	<i>Part Number</i>	<i>Qty.</i>	<i>Description</i>
1	126-7639	1	Weight With Decal ASM
1:2	126-4662	1	Decal-Warning, Traction
2	126-5967-01	1	Channel-Mount, Weight
3	126-5966-01	1	Plate-Bracket, Weight
4	103-2500	2	Bolt-SQH

<i>Ref.</i>	<i>Part Number</i>	<i>Qty.</i>	<i>Description</i>
5	3290-357	2	Nut-HHF, Whiz
6	126-5961-01	1	Plate-Bracket, Weight
7	3231-11	1	Screw-CARR
8	130-5815	1	Washer-Backup
9	109-1092	1	Knob

# Bagger and Hood Assembly



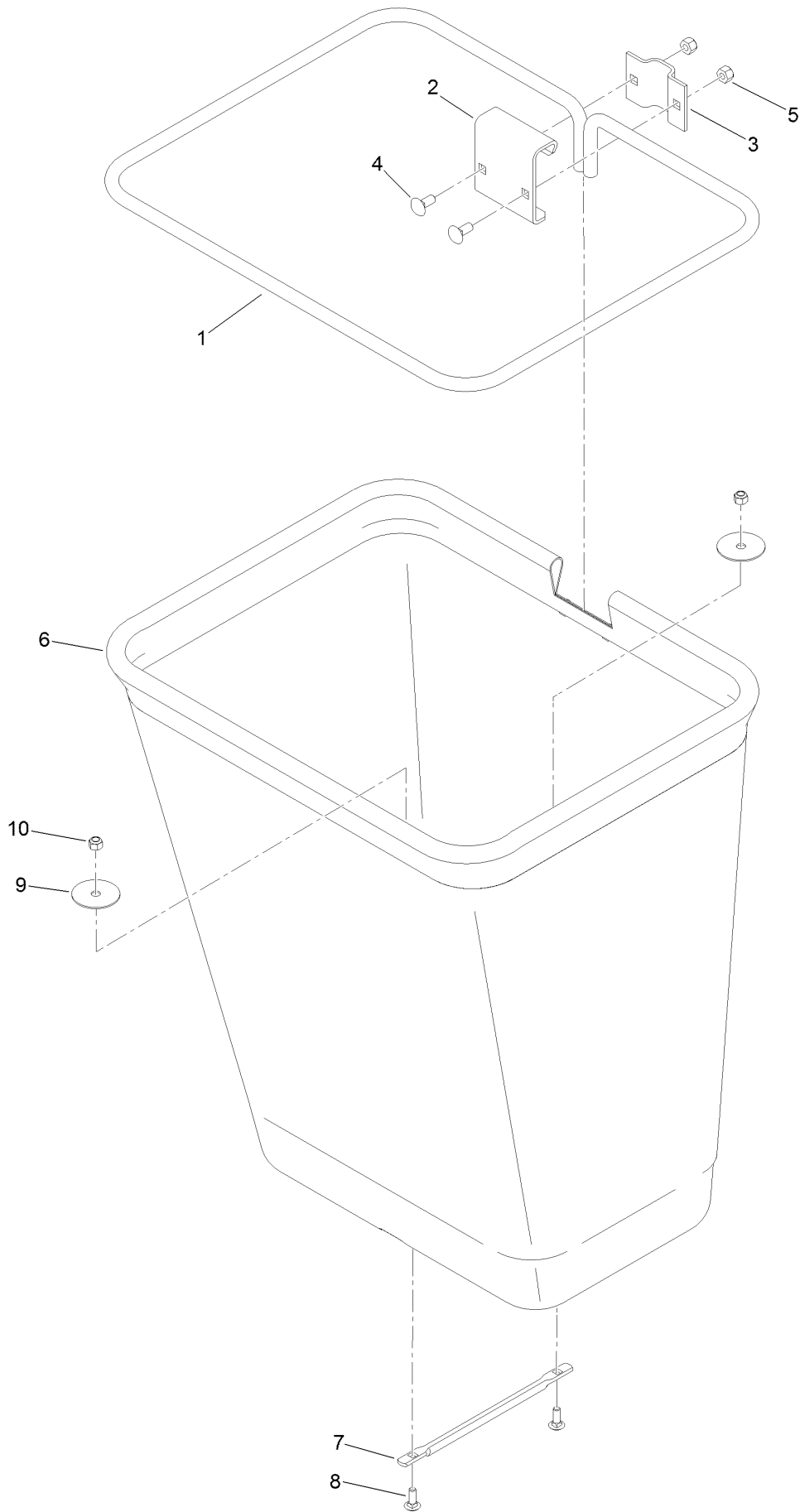


## Bagger and Hood Assembly (continued)

<i>Ref.</i>	<i>Part Number</i>	<i>Qty.</i>	<i>Description</i>	<i>Ref.</i>	<i>Part Number</i>	<i>Qty.</i>	<i>Description</i>
1	116-4783-03	1	Frame Pivot ASM	19	322-4	4	Screw-HH
2	116-0754	2	Bag And Frame ASM	20	145-3607-03	1	Support-Transmission
3	112-3987	2	Bracket-Pivot, Hopper	21	106-9951	2	Hitch Pin ASM
4	121-3215	1	Bagger Hood ASM	22	3256-14	2	Washer-Flat
5	116-4126	1	Seal	23	32104-4	2	Screw
6	116-4127-03	1	Plate-Backing	24	3256-23	4	Washer-Plain
7	3230-3	4	Screw-CARR	25	126-8742	4	Screw-HH
8	104-8300	8	Nut-HF, NI	27	126-8299	1	Cover-Hitch
9	116-6491	1	Rod-Hold Down, Hood	28	126-9159	2	Plug
10	116-4992	1	Latch-Rubber	29	116-4128	1	Lower Tube ASM
11	3256-77	2	Washer-Flat	29:1	116-4495	1	Tube-Lower
12	107-7461	2	Screw-Plastite	29:2	103-4081	2	Latch-Keeper ●
13	3290-355	2	Pin-Hair	29:3	3256-14	2	Washer-Flat
14	112-3993	1	Screen-Bagger	29:4	3290-500	2	Screw-PPH
15	3290-307	2	Pin-Cotter	30	116-4825	1	Upper Tube ASM
16	126-9662	1	RH Bagger Support ASM	30:1	116-4496	1	Tube-Upper
16:2	106-5517	1	Decal-Warning	30:2	104-7201	3	Nut-HF, NI
17	126-9663	1	LH Bagger Support ASM	30:3	1-803076	3	Screw
17:2	106-5517	1	Decal-Warning	31	126-9923	2	Strip-Trim
18	140-9504-03	1	Angle - Support, Bagger				

● Kit No. 103-4188 - Contains catch, rubber latch, and mounting hardware

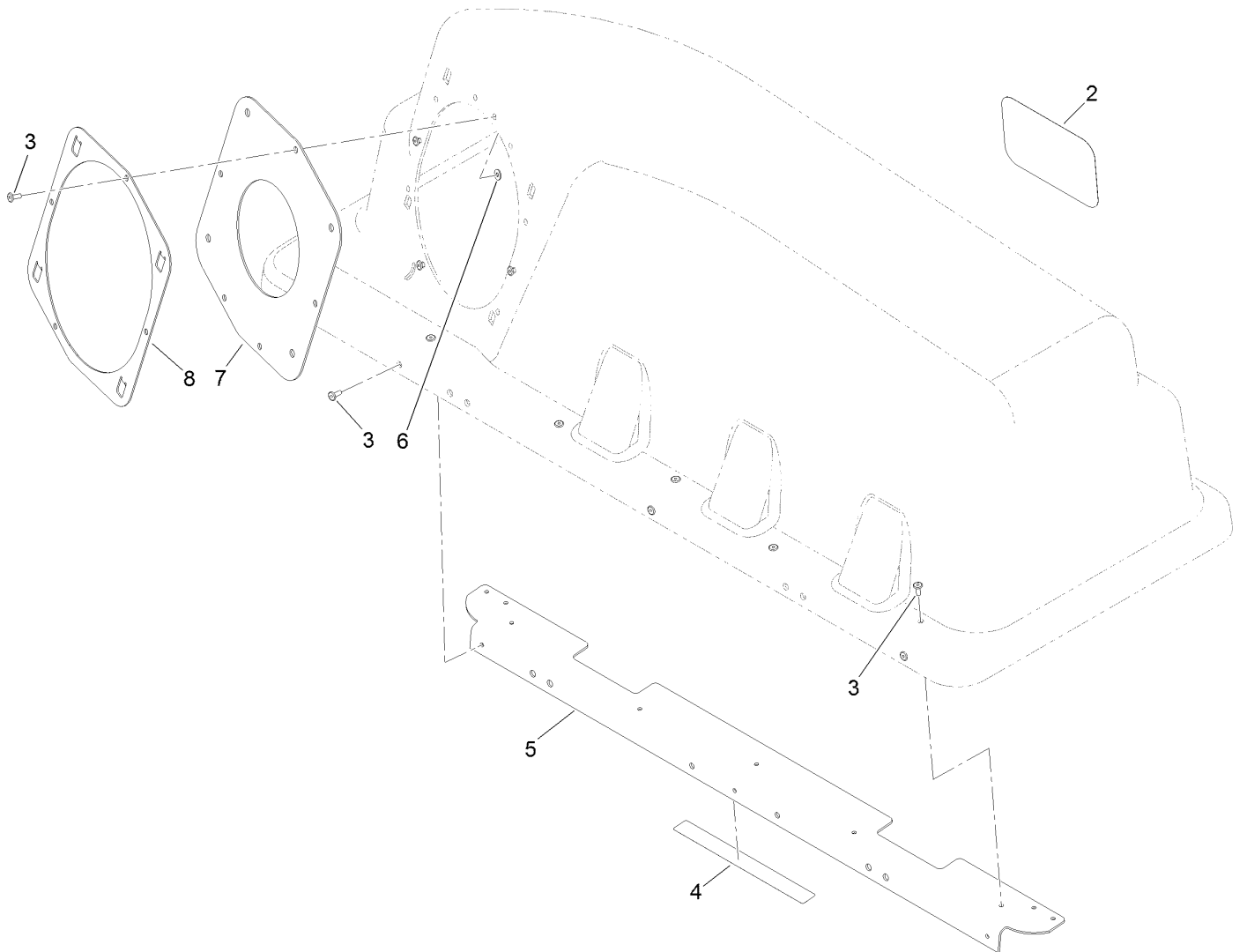
# Bag Assembly No. 116-0754



## Bag Assembly No. 116-0754 (continued)

<i>Ref.</i>	<i>Part Number</i>	<i>Qty.</i>	<i>Description</i>	<i>Ref.</i>	<i>Part Number</i>	<i>Qty.</i>	<i>Description</i>
1	1-653529-03	1	Frame-Bag	6	116-0757	1	Bag
2	114973-03	1	Hanger-Bag	7	1-653566	1	Handle-Bag
3	114974-03	1	Clamp	8	3229-1	2	Screw-CARR
4	3230-1	2	Bolt-CARR	9	1-653036	2	Washer
5	3296-29	2	Nut-Lock, NI	10	3296-42	2	Nut-Lock, NI

# Bagger Hood Assembly No. 121-3215



## Bagger Hood Assembly No. 121-3215 (continued)

<i>Ref.</i>	<i>Part Number</i>	<i>Qty.</i>	<i>Description</i>	<i>Ref.</i>	<i>Part Number</i>	<i>Qty.</i>	<i>Description</i>
2	99-4693	1	Decal	6	9202704	4	Washer-Flat
3	114439	12	Rivet-Blind	7	116-4478	1	Gasket
4	109-6809	1	Decal-Caution, Bagger	8	112-4000-03	1	Ring-Retainer
5	116-5071-03	1	Stiffener-Bagger, Top				

**Notes:**

**Notes:**



**Count on it.**