



**Count on it.**

**Parts Catalog**

**E-Z Vac™ HD Twin Bagger  
Zero Turn Radius Riding Mower**

Model No. 78431—Serial No. 407090000 and Up



# Ordering Replacement Parts

To order replacement parts, please supply the part number, the quantity, and the description of each part desired.

## Understanding Reference Numbers

Each identified part in an illustration has a reference number. The reference number for a part also appears in the parts list, along with other information about the part.

This catalog uses two special reference number formats, one to indicate parts in a service assembly and another to indicate the quantity of a given part in an illustration.

## Service Assembly Reference Numbers

Parts in service assemblies have reference numbers in the form a:b. The a represents the reference number of the entire service assembly and the b represents a sequential number unique to each part within the service assembly.

For example, a wheel assembly might be identified by reference number 6, the tire by 6:1, the valve by 6:2, and the wheel by 6:3. When you order the assembly identified by reference number 6, you receive all parts identified by reference numbers 6:1, 6:2, and 6:3. However, you may also order any part individually. Reference numbers of this type appear in illustration and in parts lists.

## Reference Numbers Indicating Quantity

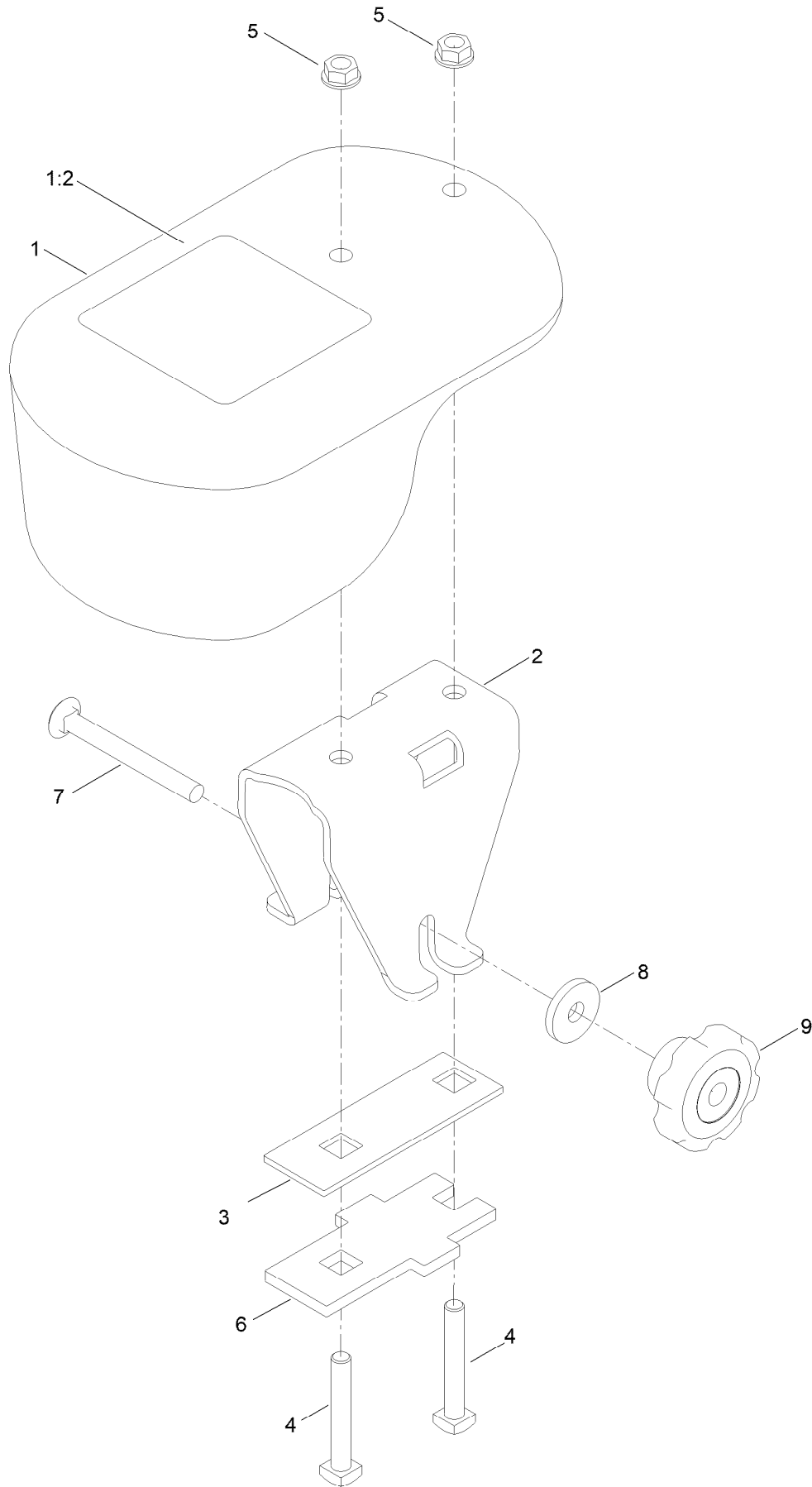
In an illustration, if a reference number indicates more than one part, the reference number has the form nX y. The n represents the quantity of the part, the X is the multiplication symbol, and the y represents the reference number.

For example, in an illustration, the reference number 2X 37 means that two of the parts identified by reference number 37 are indicated.

# Contents

Caster Weight Kit No. 126-8639 .....	4
Twin Bagger and Hood Assembly .....	6
Twin Bag Hood Assembly No. 126-8579 .....	8
Bag Support Frame Assembly No. 103-5166 .....	10
Hood Assembly No. 112-2316 .....	12
Bag Assembly No. 116-0754 .....	14

# Caster Weight Kit No. 126-8639

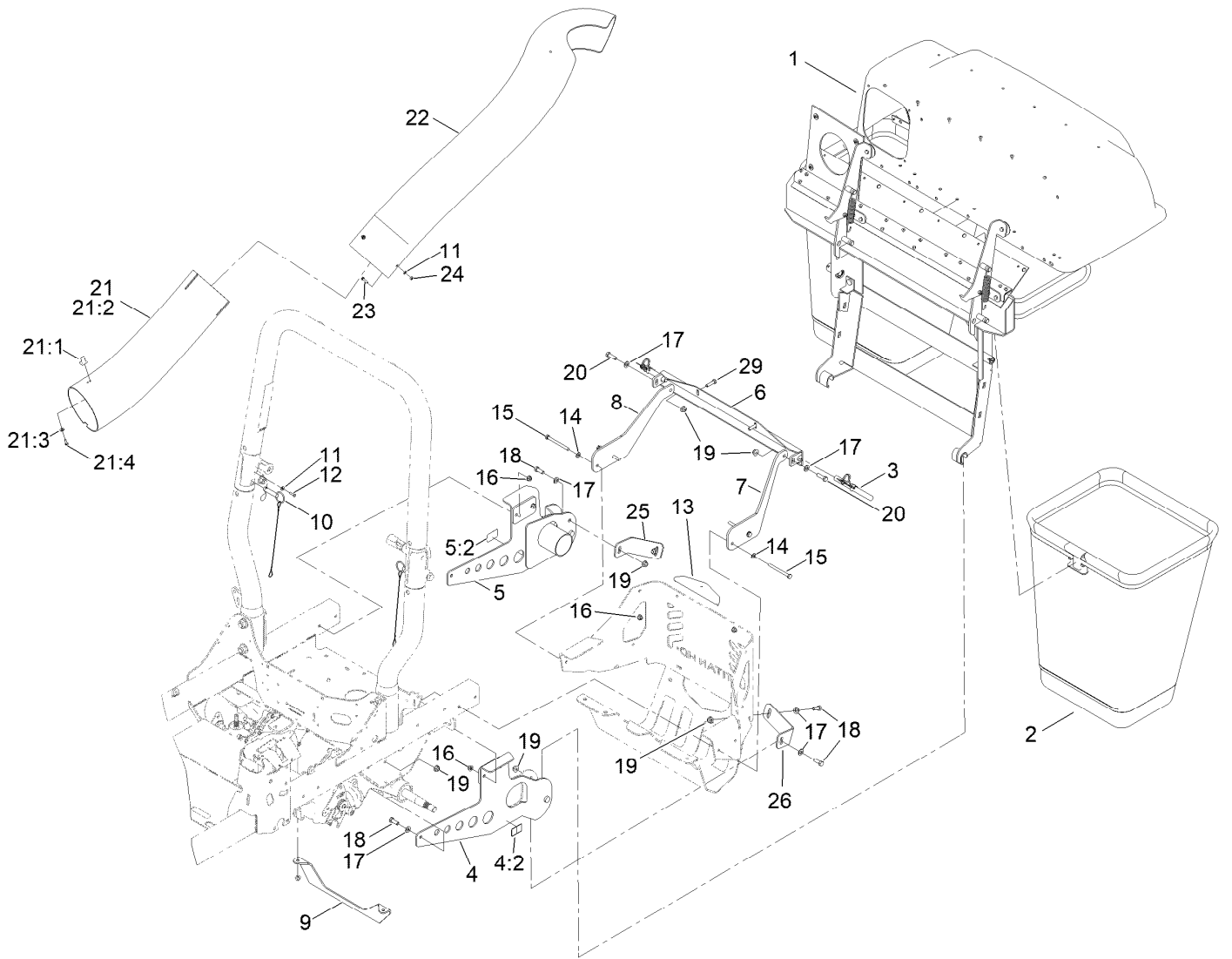


## Caster Weight Kit No. 126-8639 (continued)

<i>Ref.</i>	<i>Part Number</i>	<i>Qty.</i>	<i>Description</i>
1	126-7639	1	Weight With Decal ASM
1:2	126-4662	1	Decal-Warning, Traction
2	126-5967-01	1	Channel-Mount, Weight
3	126-5966-01	1	Plate-Bracket, Weight
4	103-2500	2	Bolt-SQH

<i>Ref.</i>	<i>Part Number</i>	<i>Qty.</i>	<i>Description</i>
5	3290-357	2	Nut-HHF, Whiz
6	126-5961-01	1	Plate-Bracket, Weight
7	3231-11	1	Screw-CARR
8	130-5815	1	Washer-Backup
9	109-1092	1	Knob

# Twin Bagger and Hood Assembly

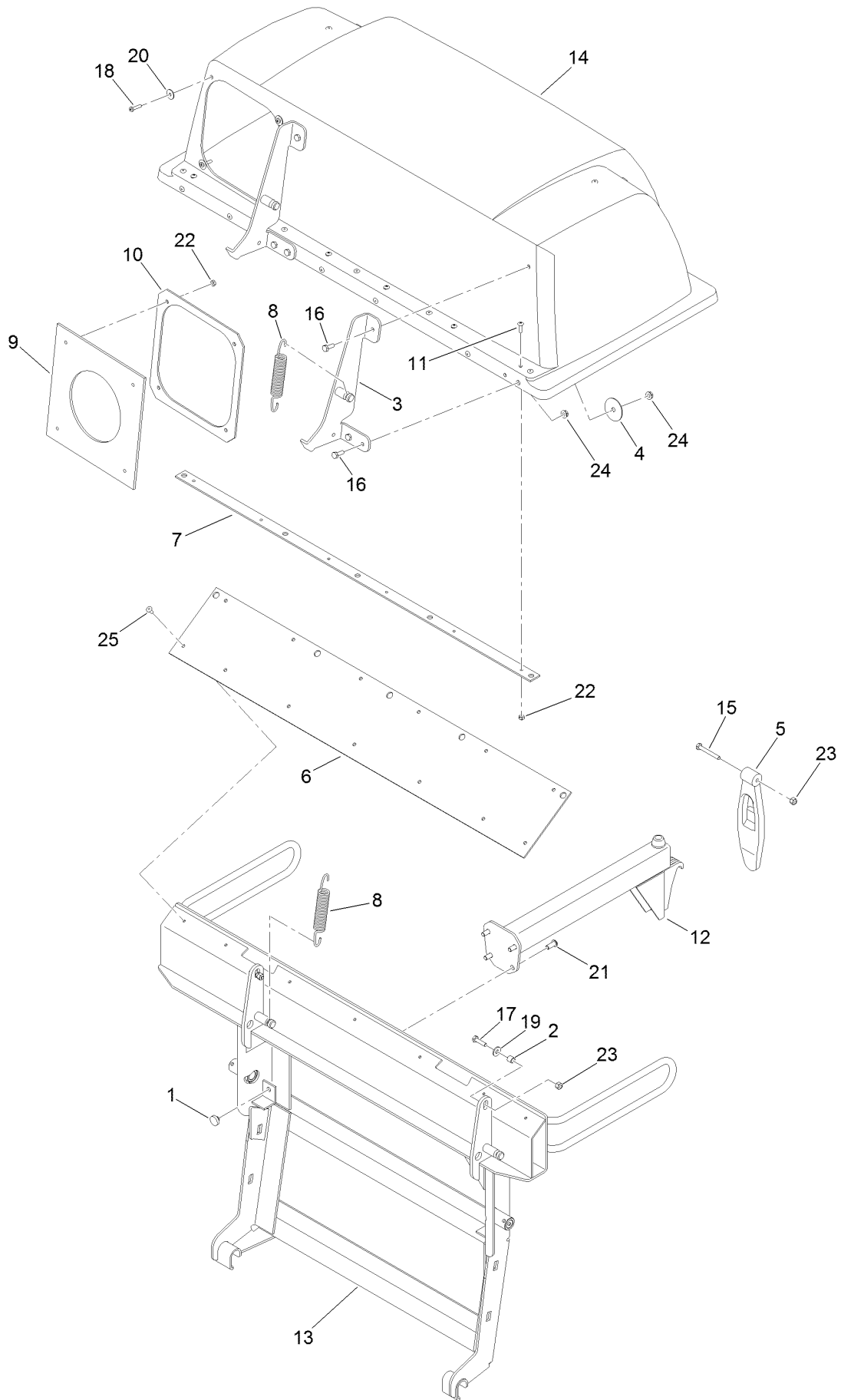


## Twin Bagger and Hood Assembly (continued)

<i>Ref.</i>	<i>Part Number</i>	<i>Qty.</i>	<i>Description</i>	<i>Ref.</i>	<i>Part Number</i>	<i>Qty.</i>	<i>Description</i>
1	126-8579	1	Twin Bag Hood ASM	16	104-8300	6	Nut-HF, NI
2	116-0754	2	Bag And Frame ASM	17	3256-24	8	Washer-Flat
3	116-0458	2	Pin-Mount, Bagger	18	323-6	6	Screw-HH
4	126-9661	1	Support-Bagger, Lower LH	19	104-8301	8	Nut-HF, NI
4:2	106-5517	1	Decal-Warning	20	323-7	2	Screw-HH
5	126-9660	1	Support-Bagger, Lower RH	21	109-2043	1	Lower Tube ASM
5:2	106-5517	1	Decal-Warning	21:1	109-2038	1	Tube-Lower, Short
6	126-9262-03	1	Support-Bagger, Upper	21:2	103-4081	2	Latch-Keeper ●
7	126-9266-03	1	Bracket-Upper, LH	21:3	3290-500	2	Screw-PPH
8	126-9265-03	1	Bracket-Upper, RH	21:4	3256-14	2	Washer-Flat
9	145-3607-03	1	Support-Transmission	22	109-2036	1	Tube-Upper
10	106-9951	2	Hitch Pin ASM	23	32105-13	3	Screw-HWH
11	3256-14	5	Washer-Flat	24	3296-2	3	Nut-Lock, NI
12	32104-4	2	Screw	25	126-9612-03	1	Bracket-Bagger, RH
13	126-8299	1	Cover-Hitch	26	126-9613-03	1	Bracket-Bagger, LH
14	3256-23	4	Washer-Plain	29	322-6	2	Screw-HH
15	AU426-556	4	Bolt				

● Kit No. 103-4188 - Contains catch, rubber latch, and mounting hardware

# Twin Bag Hood Assembly No. 126-8579

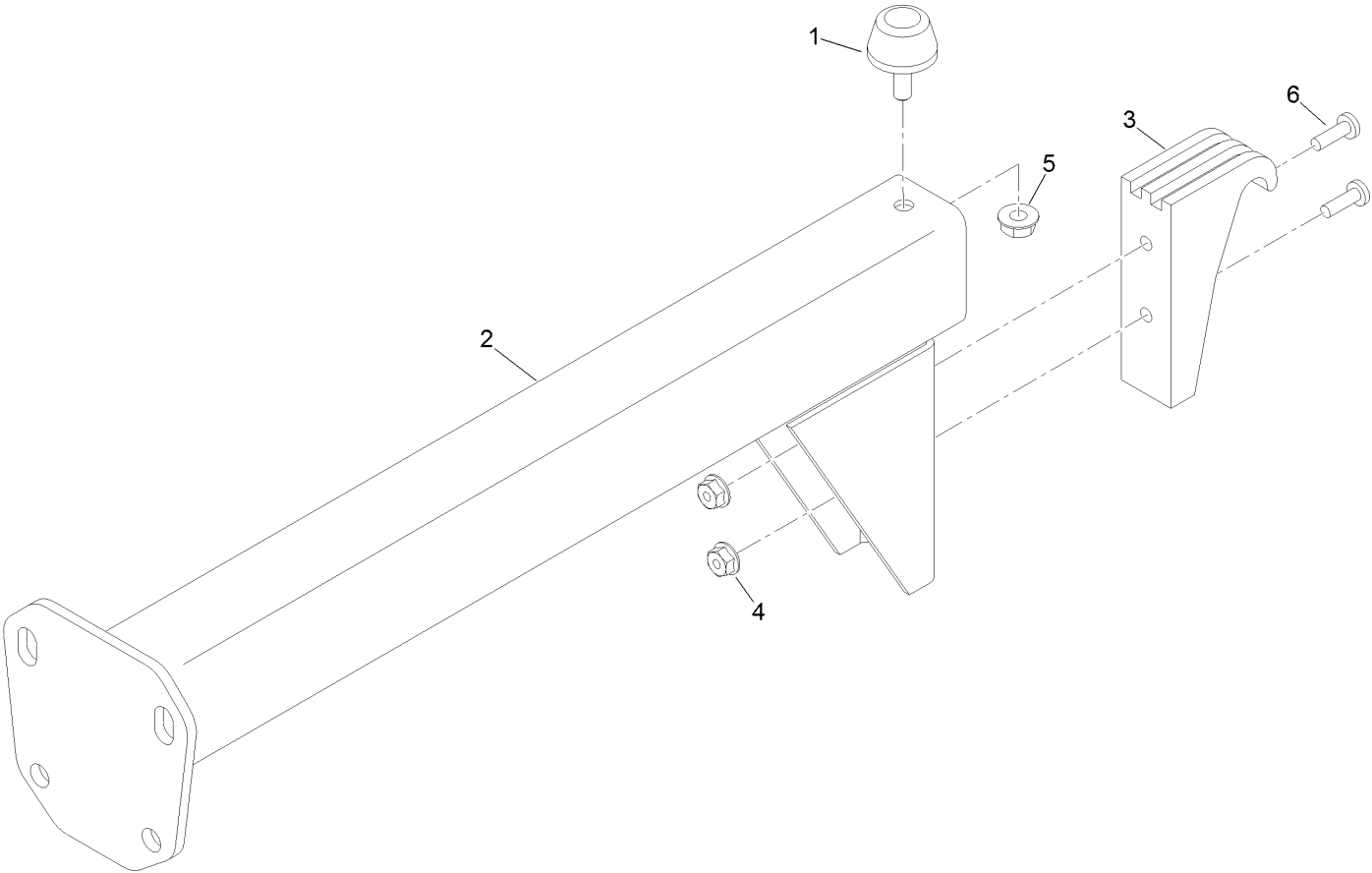




## Twin Bag Hood Assembly No. 126-8579 (continued)

<i>Ref.</i>	<i>Part Number</i>	<i>Qty.</i>	<i>Description</i>	<i>Ref.</i>	<i>Part Number</i>	<i>Qty.</i>	<i>Description</i>
1	1-513658	2	Bumper	14	112-2316	1	Hood ASM
2	1-633545	2	Spacer	15	321-11	1	Screw-HH
3	1-652395-03	2	Hinge ASM	16	321-4	6	Screw-HH
4	1-653036	2	Washer	17	321-6	2	Screw-HH
5	1-653403	1	Latch	18	3250-27	4	Screw-PPH
6	1-653425	1	Seal	19	3256-2	2	Washer-Flat
7	1-653528-03	1	Plate-Backing	20	3256-61	4	Washer-Flat
8	1-653544	2	Spring-Extension	21	3274-55	4	Screw-HSBH
9	1-653561	1	Seal-Chute	22	3296-2	10	Nut-Lock, NI
10	1-653598-03	1	Clamp-Seal	23	3296-42	3	Nut-Lock, NI
11	1-803075	6	Screw-Head, Truss	24	32128-33	6	Nut-HF
12	103-5166	1	Bag Support ASM	25	114439	7	Rivet-Blind
13	109-8705-03	1	Frame-Bag, Twin				

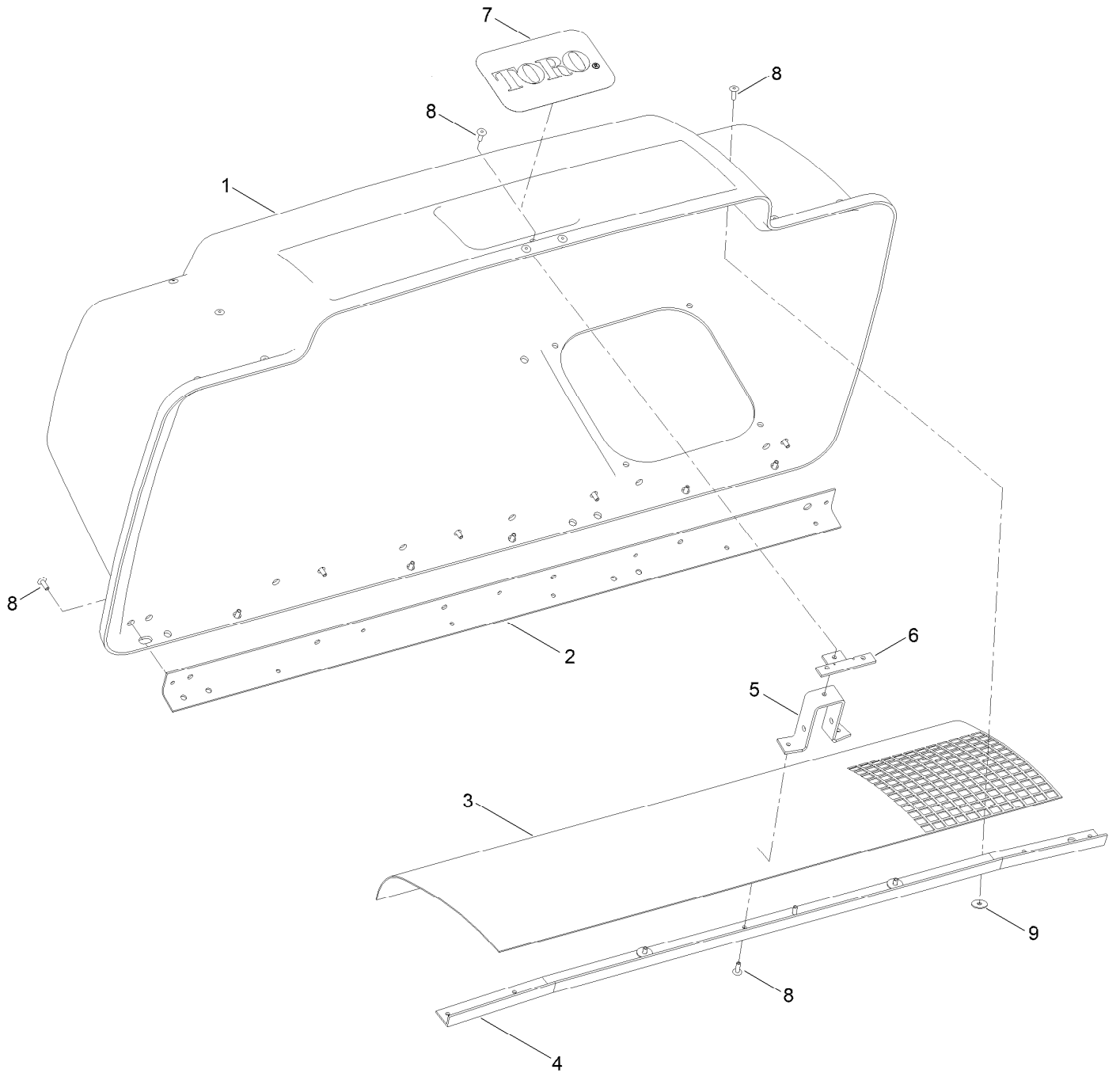
# Bag Support Frame Assembly No. 103-5166



# Bag Support Frame Assembly No. 103-5166 (continued)

<i>Ref.</i>	<i>Part Number</i>	<i>Qty.</i>	<i>Description</i>	<i>Ref.</i>	<i>Part Number</i>	<i>Qty.</i>	<i>Description</i>
1	1-523420	1	Bumper	4	3290-148	2	Nut-Whizlock
2	103-5124-03	1	Support-Bag	5	32128-33	1	Nut-Whizlock
3	1-653404	1	Catch	6	3290-500	2	Screw-PPH

# Hood Assembly No. 112-2316

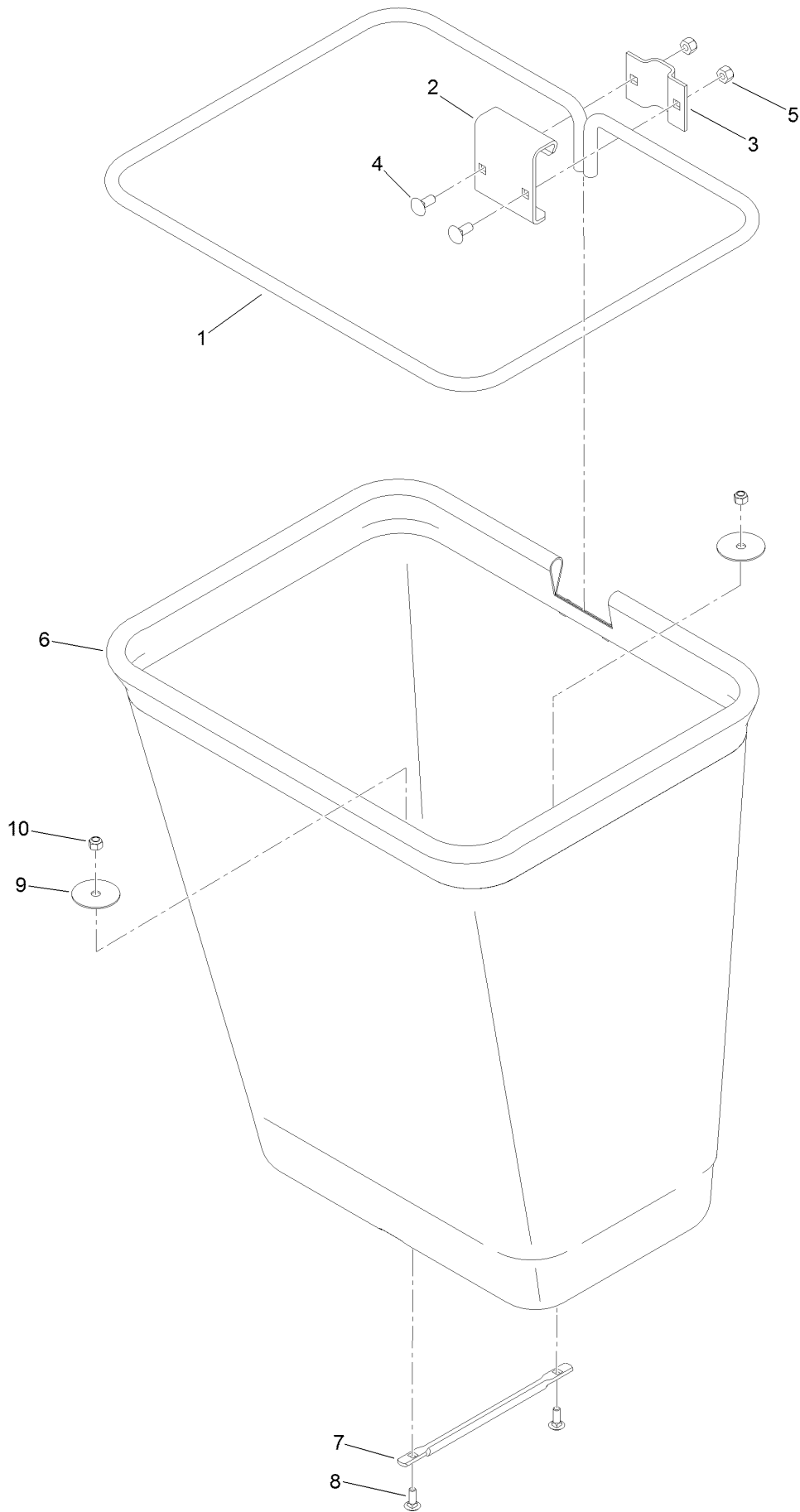


## Hood Assembly No. 112-2316 (continued)

<i>Ref.</i>	<i>Part Number</i>	<i>Qty.</i>	<i>Description</i>
1	107-4088	1	Top-Bagger
2	1-653397-03	1	Stiffener-Bagger, Top
3	114967	1	Screen-Bagger
4	1-653400-03	1	Support-Screen
5	1-653519	1	Anchor-Latch

<i>Ref.</i>	<i>Part Number</i>	<i>Qty.</i>	<i>Description</i>
6	1-653535	1	Reinforcement-Latch
7	99-4693	1	Decal
8	114439	38	Rivet-Blind
9	3256-61	12	Washer-Flat

# Bag Assembly No. 116-0754



## Bag Assembly No. 116-0754 (continued)

<i>Ref.</i>	<i>Part Number</i>	<i>Qty.</i>	<i>Description</i>	<i>Ref.</i>	<i>Part Number</i>	<i>Qty.</i>	<i>Description</i>
1	1-653529-03	1	Frame-Bag	6	116-0757	1	Bag
2	114973-03	1	Hanger-Bag	7	1-653566	1	Handle-Bag
3	114974-03	1	Clamp	8	3229-1	2	Screw-CARR
4	3230-1	2	Bolt-CARR	9	1-653036	2	Washer
5	3296-29	2	Nut-Lock, NI	10	3296-42	2	Nut-Lock, NI



**Count on it.**