



**Count on it.**

**Parts Catalog**

**Turn Signal Kit**

**Groundsmaster® 360, 3200, 3300, 4000, 5900,  
7200 Series Rotary Mower or Reelmaster®  
3000, 5000 Series Traction Unit with ROPS**

Model No. 31672



# Ordering Replacement Parts

To order replacement parts, please supply the part number, the quantity, and the description of each part desired.

## Understanding Reference Numbers

Each identified part in an illustration has a reference number. The reference number for a part also appears in the parts list, along with other information about the part.

This catalog uses two special reference number formats, one to indicate parts in a service assembly and another to indicate the quantity of a given part in an illustration.

## Service Assembly Reference Numbers

Parts in service assemblies have reference numbers in the form a:b. The a represents the reference number of the entire service assembly and the b represents a sequential number unique to each part within the service assembly.

For example, a wheel assembly might be identified by reference number 6, the tire by 6:1, the valve by 6:2, and the wheel by 6:3. When you order the assembly identified by reference number 6, you receive all parts identified by reference numbers 6:1, 6:2, and 6:3. However, you may also order any part individually. Reference numbers of this type appear in illustration and in parts lists.

## Reference Numbers Indicating Quantity

In an illustration, if a reference number indicates more than one part, the reference number has the form nX y. The n represents the quantity of the part, the X is the multiplication symbol, and the y represents the reference number.

For example, in an illustration, the reference number 2X 37 means that two of the parts identified by reference number 37 are indicated.

# Contents

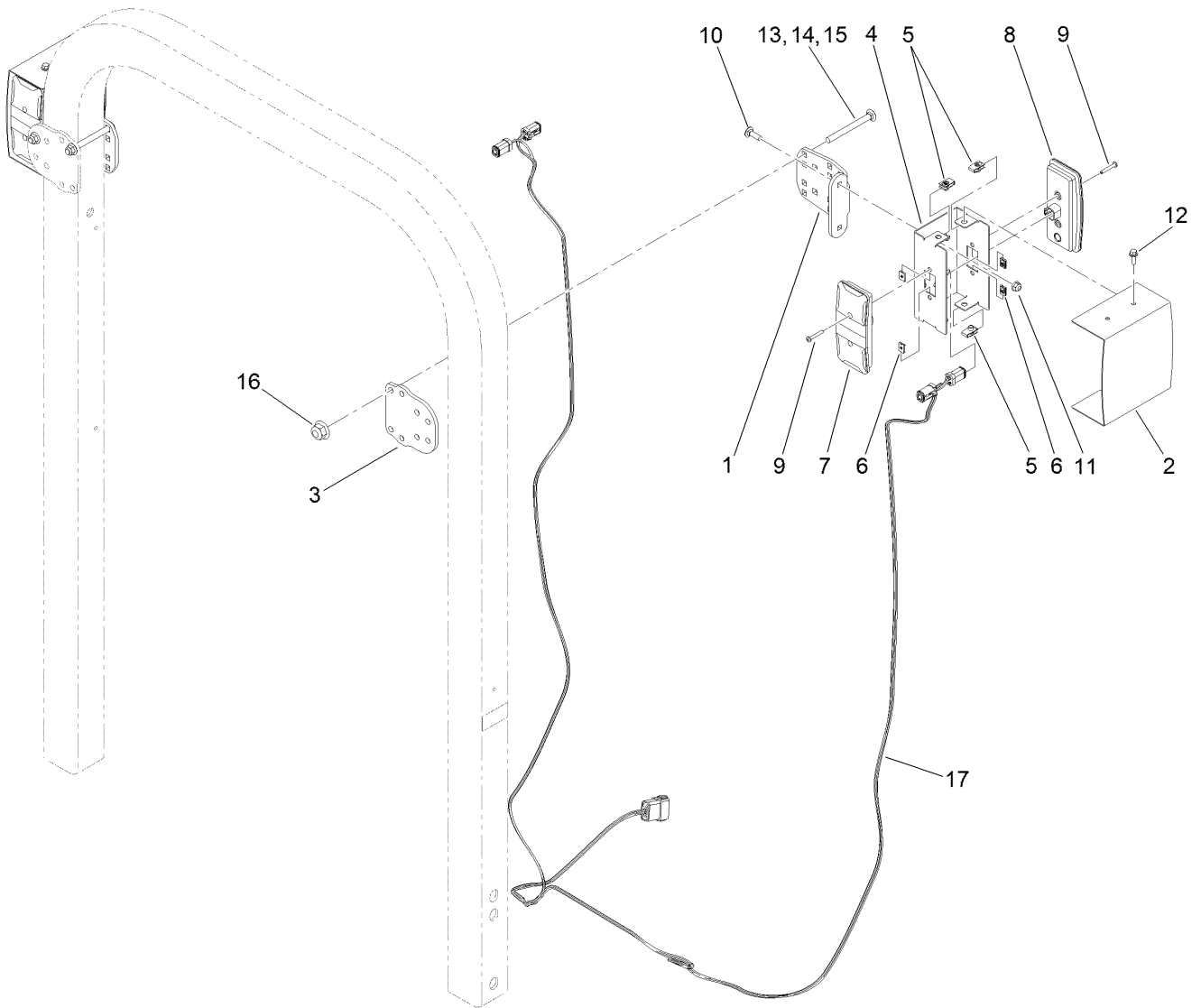
Turn Signal Kit Assembly Installation with Sunshade .....	4
Turn Signal Kit Assembly Standalone Installation .....	6



## Turn Signal Kit Assembly Installation with Sunshade (continued)

<i>Ref.</i>	<i>Part Number</i>	<i>Qty.</i>	<i>Description</i>	<i>Ref.</i>	<i>Part Number</i>	<i>Qty.</i>	<i>Description</i>
1	140-6806-03	2	Bracket-Mounting, ROPS	10	3230-2	4	Bolt-CARR
2	140-6807-03	2	Cover-Lights, ROPS	11	104-8300	4	Nut-HF, NI
4	140-6826-03	2	Bracket-Lights,ROPS	12	120-9678	8	Screw-HHF
5	107069	8	Clip	13	109-6795	4	Bolt-CARR
6	107-1013	8	Nut-Speed	14	135-0313	4	Screw-CARR
7	139-2070	2	Light-Front Turn/Pos	15	3231-10	4	Screw-CARR
8	139-2071	2	Light-Rear Tail/Stop/Turn	16	104-8301	4	Nut-HF, NI
9	3250-23	8	Screw-PPH	17	122-2187	1	Harness-Wire, ROPS Lights

# Turn Signal Kit Assembly Standalone Installation



Installation with Sunshade

## Turn Signal Kit Assembly Standalone Installation (continued)

<i>Ref.</i>	<i>Part Number</i>	<i>Qty.</i>	<i>Description</i>	<i>Ref.</i>	<i>Part Number</i>	<i>Qty.</i>	<i>Description</i>
1	140-6806-03	2	Bracket-Mounting, ROPS	10	3230-2	4	Bolt-CARR
2	140-6807-03	2	Cover-Lights, ROPS	11	104-8300	4	Nut-HF, NI
3	140-6808-03	2	Back-Mounting, ROPS	12	120-9678	8	Screw-HHF
4	140-6826-03	2	Bracket-Lights,ROPS	13	109-6795	4	Bolt-CARR
5	107069	8	Clip	14	135-0313	4	Screw-CARR
6	107-1013	8	Nut-Speed	15	3231-10	4	Screw-CARR
7	139-2070	2	Light-Front Turn/Pos	16	104-8301	4	Nut-HF, NI
8	139-2071	2	Light-Rear Tail/Stop/Turn	17	122-2187	1	Harness-Wire, ROPS Lights
9	3250-23	8	Screw-PPH				



**Count on it.**