



Form No. 3439-675 Rev C

Count on it.

Operator's Manual

Mulch Force

GrandStand® Multi Force®

Model No. 78597—Serial No. 40000000 and Up



⚠ WARNING

**CALIFORNIA
Proposition 65 Warning**

Use of this product may cause exposure to chemicals known to the State of California to cause cancer, birth defects, or other reproductive harm.

Write the product model and serial numbers in the space below:

Model No.	_____
Serial No.	_____

This manual identifies potential hazards and has safety messages identified by the safety-alert symbol (Figure 2), which signals a hazard that may cause serious injury or death if you do not follow the recommended precautions.



Figure 2

g000502

1. Safety-alert symbol

This manual uses 2 words to highlight information. **Important** calls attention to special mechanical information and **Note** emphasizes general information worthy of special attention.

Introduction

This attachment is used to move mulch or debris on residential or commercial properties. Using this product for purposes other than its intended use could prove dangerous to you and bystanders.

Read this information carefully to learn how to operate and maintain your product properly and to avoid injury and product damage. You are responsible for operating the product properly and safely.

Visit www.Toro.com for product safety and operation training materials, accessory information, help finding a dealer, or to register your product.

Whenever you need service, genuine Toro parts, or additional information, contact an Authorized Service Dealer or Toro Customer Service and have the model and serial numbers of your product ready. Figure 1 identifies the location of the model and serial numbers on the product. Write the numbers in the space provided.

Important: With your mobile device, you can scan the QR code on the serial number decal (if equipped) to access warranty, parts, and other product information.

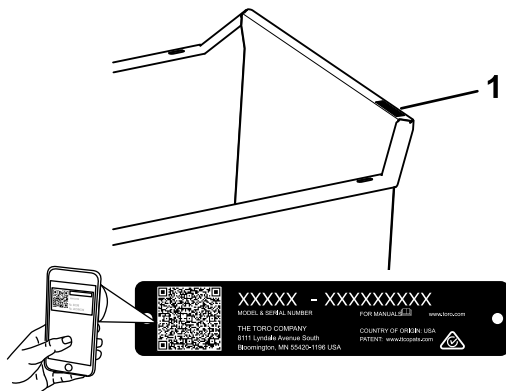


Figure 1

g344348

1. Model and serial number plate

Contents


Safety	3
General Safety	3
Safety and Instructional Decals	3
Setup	4
Preparing the Machine.....	4
Installing the Bucket	4
Operation	6
Operation Safety	6
Loading the Bucket.....	6
Lowering and Raising the Bucket.....	7
Opening the Bucket Door.....	7
Transporting the Machine	8
Removing the Bucket.....	9
Maintenance	11
Checking the Hydraulic Hoses.....	11
Removing Debris from the Machine	11

Safety

General Safety

Always follow all safety instructions to avoid serious personal injury.

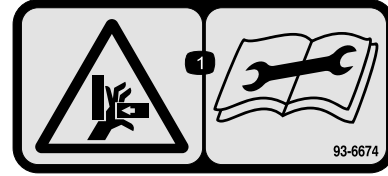
- Read and understand the contents of this *Operator's Manual* before starting the engine.
- Do not put your hands or feet near moving components of the machine.
- Do not operate the machine without all guards and other safety protective devices in place and functioning properly on the machine.
- Keep bystanders and children out of the operating area. Do not allow children to operate the machine. Allow only people who are responsible, trained, familiar with the instructions, and physically capable to operate the machine.
- Stop the machine, lower the bucket, shut off the engine, and remove the ignition key before servicing or fueling the machine.

Improperly using or maintaining this machine can result in injury. To reduce the potential for injury, comply with these safety instructions and always pay attention to the safety-alert symbol , which means Caution, Warning, or Danger—personal safety instruction. Failure to comply with these instructions may result in personal injury or death.

Safety and Instructional Decals



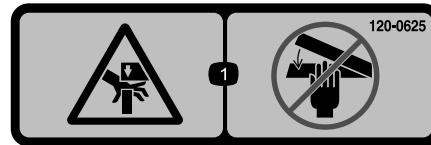
Safety decals and instructions are easily visible to the operator and are located near any area of potential danger. Replace any decal that is damaged or missing.



93-6674

decal93-6674


1. Crushing hazard, hand—read the instructions before servicing or performing maintenance.



120-0625

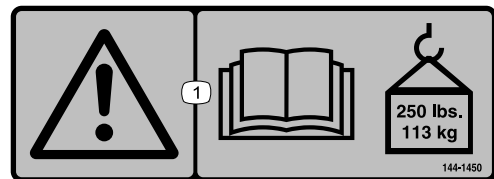
decal120-0625

1. Pinch point, hand—keep hands away.

 **WARNING:** Cancer and Reproductive Harm - www.P65Warnings.ca.gov. For more information, please visit www.ttcocaprop65.com

133-8061

decal133-8061



144-1450

decal144-1450

1. Warning—read the *Operator's Manual*; maximum weight limit 113 kg (250 lb).

Setup

Install the following (sold separately) on your machine before installing the attachment:

- Low Flow Hydraulic Kit (required)
- Pneumatic casters (recommended)

Preparing the Machine

1. Park the machine on a level surface.
2. Lower the A-frame.
3. Disengage the PTO, engage the parking brake, and move the motion-control levers outward to the NEUTRAL-LOCK position.
4. Shut off the engine and remove the key.

Installing the Bucket

Note: Installing this attachment requires 2 people. Retain all removed hardware; they will be installed when the bucket is removed later.

1. Remove the existing carriage bolts and nuts from the lock bracket at the front of the machine.

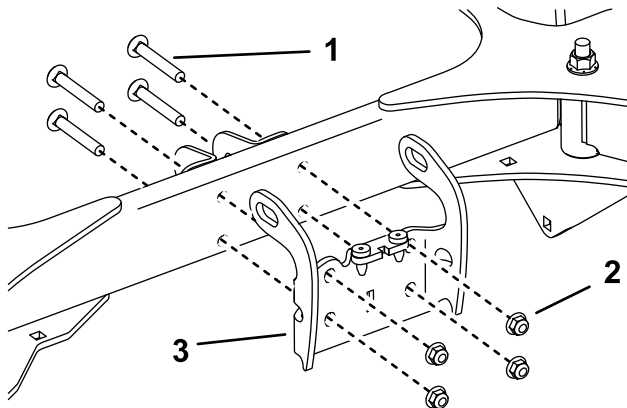


Figure 3

g210329

1. Carriage bolt—3/8 x 2-1/2 inches (4)
2. Nut—3/8 inch (2)
3. Lock bracket

2. Use 4 carriage bolts and 4 nuts (3/8 inch) to secure the lower mount bracket to the lock bracket

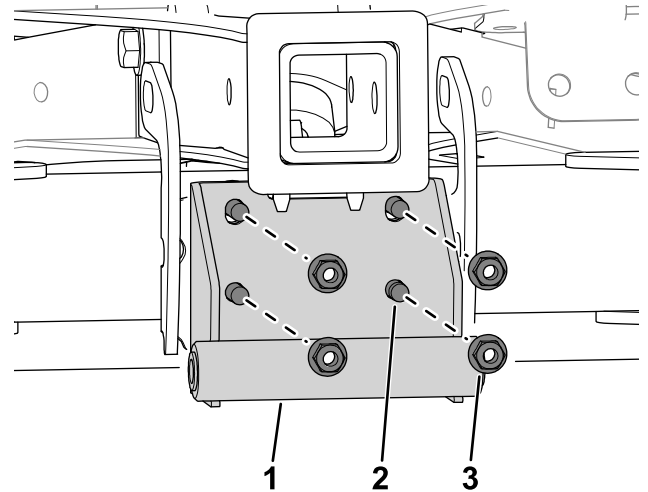


Figure 4

g321097

1. Lower mount bracket
2. Carriage bolt—3/8 x 2-3/4 inches (4)
3. Nut—3/8 inch (4)

3. Remove the existing fasteners from the disconnect-fitting bracket.

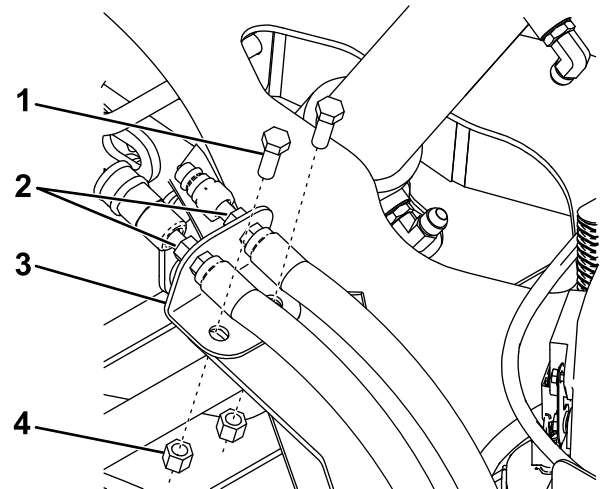


Figure 5

g245631

1. Bolt (2)
2. Disconnect fittings
3. Bracket
4. Nut (2)

- Loosen or disconnect the hydraulic fittings from the hoses.

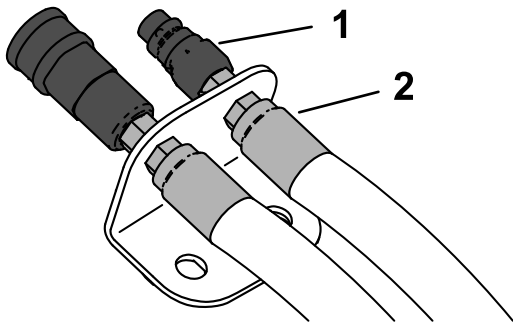


Figure 6

g358469

- Quick couplers
- Hose fittings

- Use the fasteners to secure the bracket under the A-frame.

Important: Ensure that the hoses cannot be pinched between the A-frame and the machine frame.

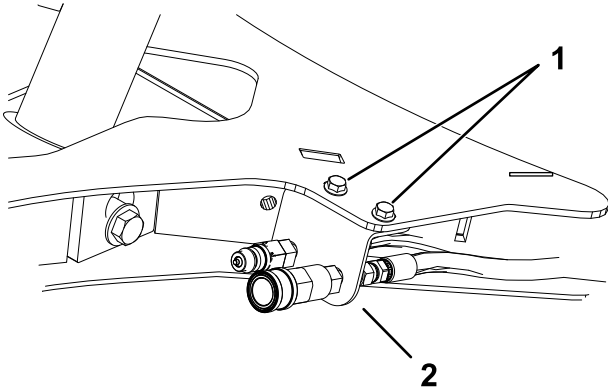


Figure 7

g337983

- Fasteners
- Bracket

- Install the fittings to the hoses, if removed; ensure that the hoses are not under tension. Tighten the fittings to 18 to 19 N·m (13 to 14 ft-lb).
- Ensure that the quick couplers are tightened 2 to 3 turns past finger-tight.

- Use a hitch pin and a cotter pin to install the T-bar into the A-frame receiver.

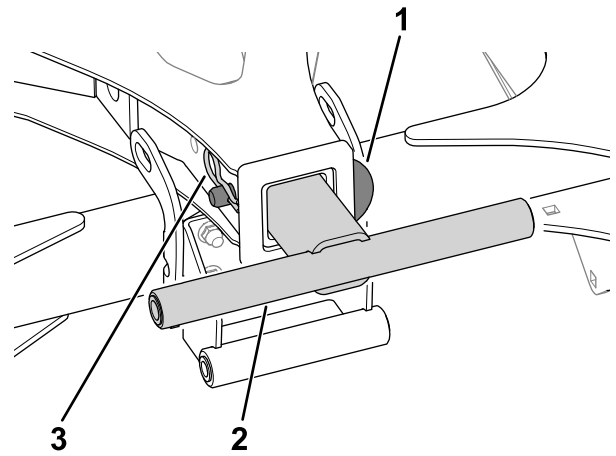


Figure 8

g321098

- Hitch pin
- Cotter pin
- T-bar

- Have an assistant help you to set the bucket on the machine. Ensure that the bumpers sit on the frame tube.

Important: Do not lift the bucket using the door.

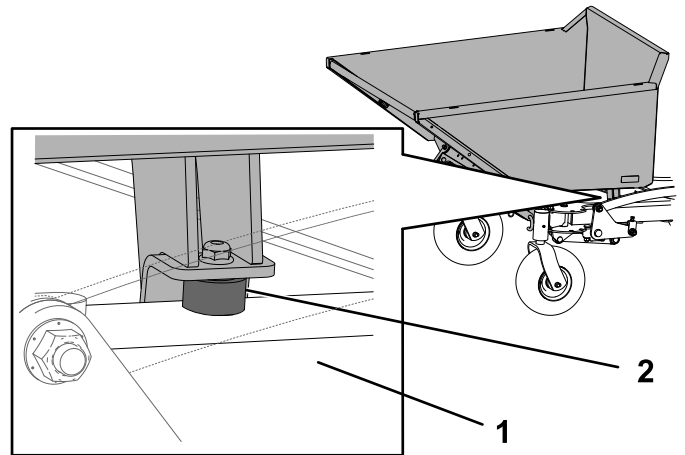


Figure 9

g343520

- Frame tube
- Bumper

10. Use the large pin and a cotter pin to secure the bucket to the T-bar.

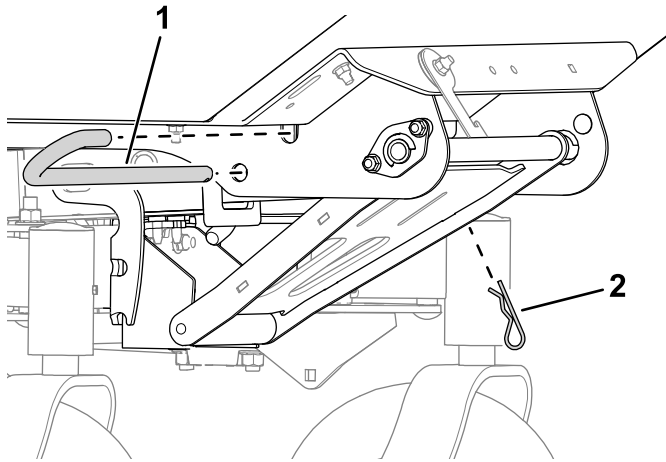


Figure 10

g321100

1. Large pin
2. Cotter pin

11. Use the small pin and a cotter pin to secure the strut.

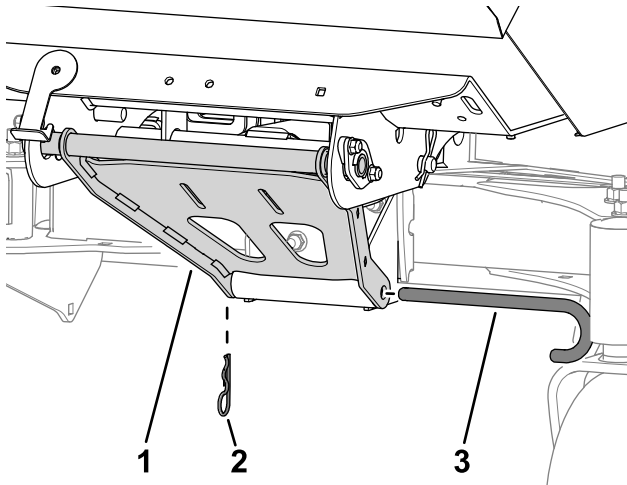


Figure 11

g321099

1. Strut
2. Cotter pin
3. Small pin

To remove the bucket, refer to [Removing the Bucket \(page 9\)](#).

Operation

Operation Safety

- Stop the machine on level ground, lower the bucket, shut off the engine, and remove the key before leaving the operator's position for any reason.
- Do not exceed the rated operating capacity, as the machine may become unstable which may result in loss of control.
- Raising the bucket on a slope affects the stability of the machine. Keep the bucket in the lowered position when on slopes.
- Locate the pinch point areas marked on the machine and keep hands and feet away from these areas.
- Do not overload the bucket and always keep the load level when operating the machine.
- Operate the machine up and down slopes with the heavy end of the machine uphill. Weight distribution changes with attachments. An empty bucket makes the rear of the machine the heavy end, and a full bucket makes the front of the machine the heavy end.
- Clean debris from drives, mufflers, and the engine to help prevent fires. Clean up oil or fuel spills.

Loading the Bucket

1. Fill the bucket.

Important: The weight capacity of the bucket is 113 kg (250 lb).

2. Remove any loose debris from the machine.

Lowering and Raising the Bucket

1. Rotate the latch up.

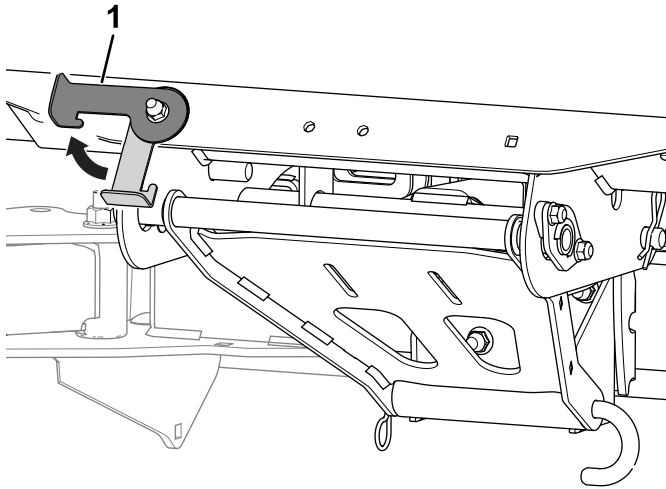


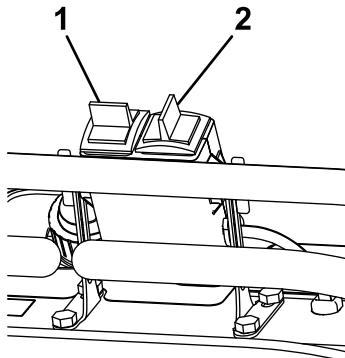
Figure 12

g321388

1. Latch

2. Use the switch from the Low Flow Hydraulic kit to lower or raise the bucket

Important: Do not raise or lower the bucket while the machine is moving.



G037041

Figure 13

g037041

1. Rotate the bucket
2. Not used with this attachment

Opening the Bucket Door

1. Remove the lynch pin on each side of the door and store it using the holes on the rail.

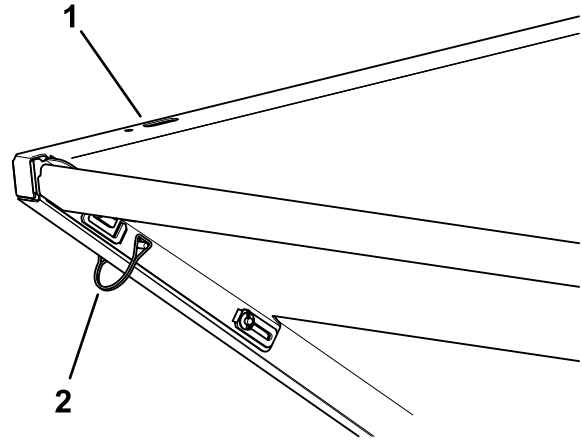


Figure 14

g346830

1. Holes
2. Lynch pin

2. Slide the door up and lower it.

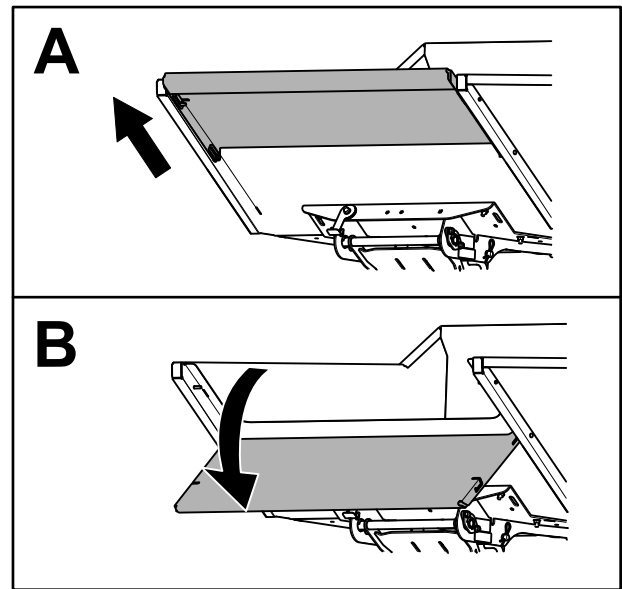


Figure 15

g344347

3. Close the door and secure it using the lynch pins.

Transporting the Machine

Use a heavy-duty trailer or truck to transport the machine. Use a full-width ramp. Ensure that the trailer or truck has all the necessary brakes, lighting, and marking as required by law. Please carefully read all the safety instructions. Knowing this information could help you or bystanders avoid injury. Refer to your local ordinances for trailer and tie-down requirements.

⚠ WARNING

Driving on the street or roadway without turn signals, lights, reflective markings, or a slow-moving-vehicle emblem is dangerous and can lead to accidents, causing personal injury.

Do not drive the machine on a public street or roadway.

Selecting a Trailer

⚠ WARNING

Loading a machine onto a trailer or truck increases the possibility of tip-over and could cause serious injury or death (Figure 16).

- Use only a full-width ramp; do not use individual ramps for each side of the machine.
- Ensure that the length of ramp is at least 4 times as long as the height of the trailer or truck bed to the ground.

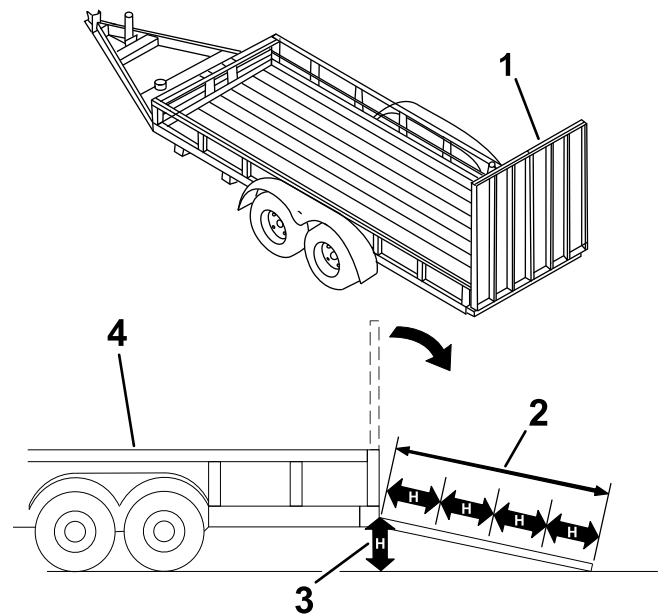


Figure 16

g229507

1. Full-width ramp in stowed position
2. Ramp is at least 4 times as long as the height of the trailer or truck bed to the ground
3. H=height of the trailer or truck bed to the ground
4. Trailer

Loading the Machine

⚠ WARNING

Loading a machine onto a trailer or truck increases the possibility of tip-over and could cause serious injury or death.

- Use extreme caution when operating a machine on a ramp.
 - Avoid sudden acceleration or deceleration while driving the machine on a ramp as this could cause a loss of control or a tip-over situation.
1. If using a trailer, connect it to the towing vehicle and connect the safety chains.
 2. If applicable, connect the trailer brakes and lights.
 3. Lower the ramp (Figure 16).
 4. Ensure that the bucket is empty.
 5. Load the machine onto the trailer.
 6. Shut off the engine, remove the key, and engage the parking brake.
 7. Tie down the machine near the front caster wheels and the rear bumper with straps, chains, cable, or ropes (Figure 17). Refer to local regulations for tie-down requirements.

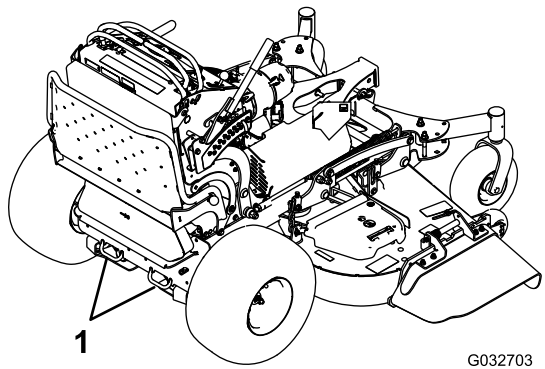


Figure 17

G032703
g032703

1. Tie-down loops

5. Remove the cotter pin and large pin.

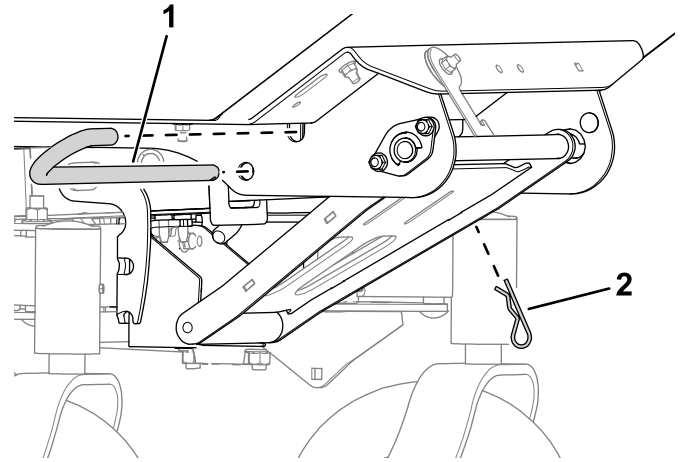


Figure 19

g321100

1. Large pin
2. Cotter pin

Removing the Bucket

Note: Removing this attachment requires 2 people.

1. Empty the bucket.
2. Park the machine on a level surface, lower the bucket, and engage the parking brake.
3. Shut off the engine, remove the key, and wait for all moving parts to stop before leaving the operating position.
4. Remove the small pin and cotter pin from the strut.

6. With the assistance of another person, lift the bucket off the machine.

7. Remove the hitch pin, cotter pin, and T-bar.

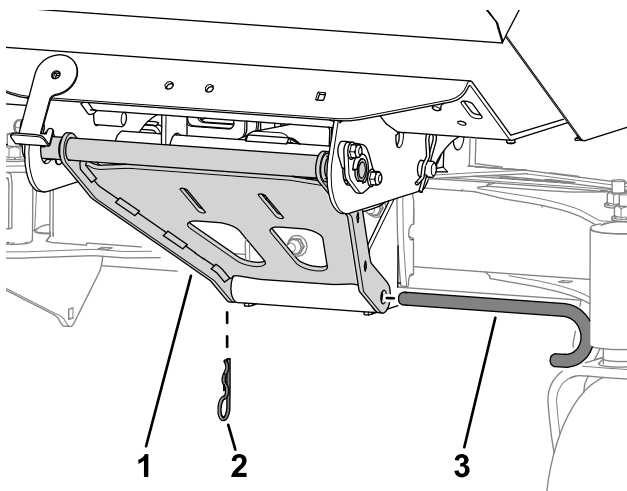


Figure 18

g321099

1. Strut
2. Cotter pin
3. Small pin

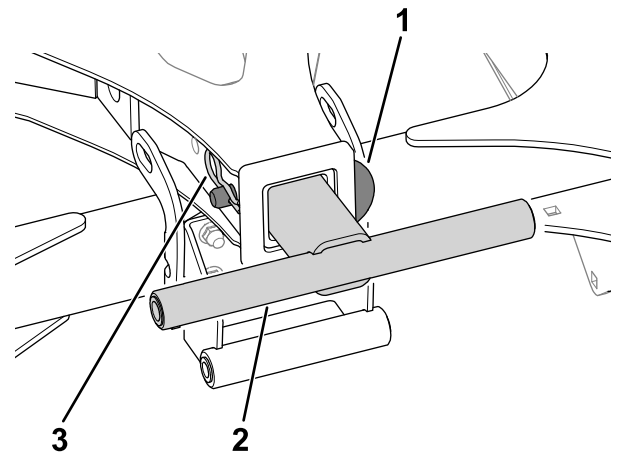


Figure 20

g321098

1. Hitch pin
2. Cotter pin
3. T-bar

- Remove the fasteners from the disconnect-fitting bracket.

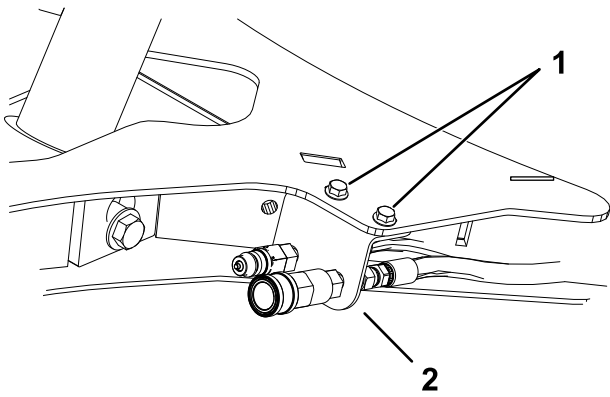


Figure 21

g337983

- Fasteners
- Bracket

- Loosen or disconnect the hydraulic fittings from the hoses.

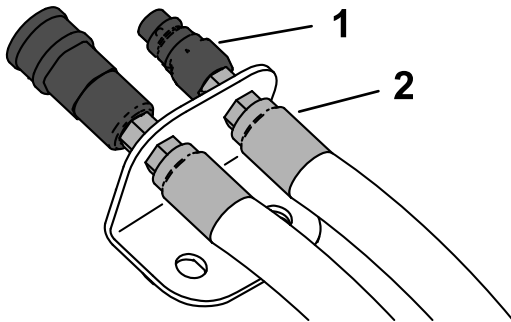


Figure 22

g358469

- Quick couplers
- Hose fittings

- Use the fasteners to install the bracket over the A-frame.

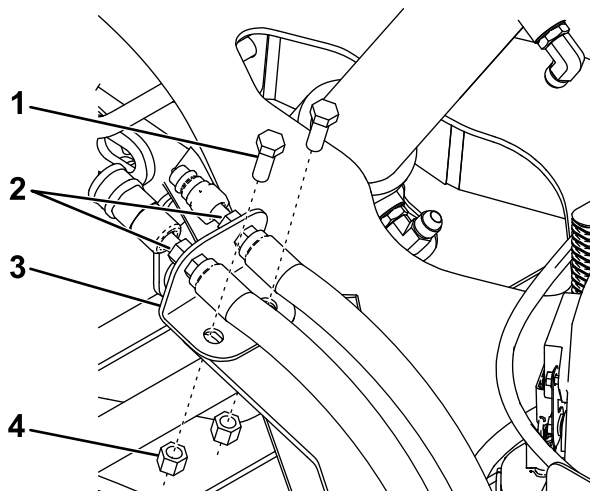


Figure 23

g245631

- Bolt (2)
- Disconnect fittings
- Bracket
- Nut (2)

- Install the fittings to the hoses, if removed; ensure that the hoses are not under tension. Tighten the fittings to 18 to 19 N·m (13 to 14 ft·lb).
- Ensure that the quick couplers are tightened 2 to 3 turns past finger-tight.
- Remove the lower mount bracket.

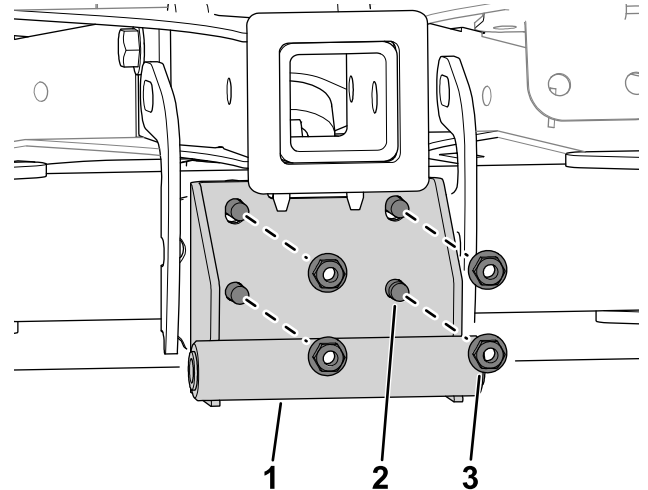


Figure 24

g321097

- Lower mount bracket
- Carriage bolt— $\frac{3}{8}$ x 2- $\frac{3}{4}$ inches (4)
- Nut— $\frac{3}{8}$ inch (4)

- Install the lock bracket.

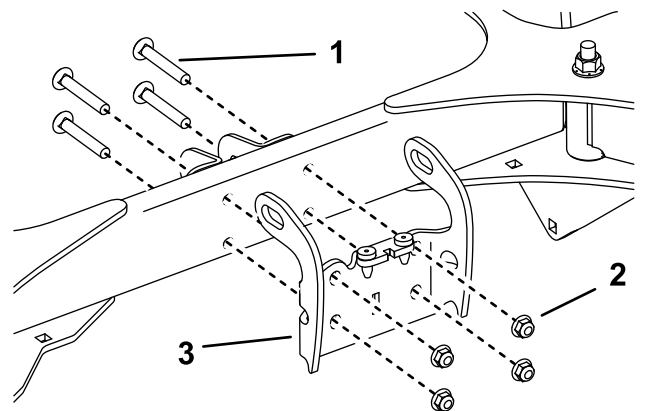


Figure 25

g210329

- Carriage bolt— $\frac{3}{8}$ x 2- $\frac{1}{2}$ inches (4)
- Nut— $\frac{3}{8}$ inch (4)
- Lock bracket

Maintenance

⚠ CAUTION

If you leave the key in the switch, someone could accidentally start the engine and seriously injure you or other bystanders.

Remove the key from the switch before you perform any maintenance.

Checking the Hydraulic Hoses

Service Interval: Every 100 hours

Check the hydraulic hoses for leaks, loose fittings, kinked lines, loose mounting supports, wear, weather, and chemical deterioration.

⚠ WARNING

Hydraulic fluid escaping under pressure can penetrate skin and cause injury. Fluid injected into the skin must be surgically removed within a few hours by a doctor familiar with this form of injury; otherwise, gangrene may result.

- **Ensure that all hydraulic-fluid hoses and lines are in good condition and all hydraulic connections and fittings are tight before applying pressure to the hydraulic system.**
- **Keep your body and hands away from pinhole leaks or nozzles that eject high-pressure hydraulic fluid.**
- **Use cardboard or paper to find hydraulic leaks; never use your hands.**

Removing Debris from the Machine

Service Interval: After each use

1. Park the machine on a level surface, lower the bucket, and engage the parking brake.
2. Shut off the engine, remove the key, and wait for all moving parts to stop before leaving the operating position.
3. Clean debris from the drives, muffler, and engine after each use.

California Proposition 65 Warning Information

What is this warning?

You may see a product for sale that has a warning label like the following:



WARNING: Cancer and Reproductive Harm—www.p65Warnings.ca.gov.

What is Prop 65?

Prop 65 applies to any company operating in California, selling products in California, or manufacturing products that may be sold in or brought into California. It mandates that the Governor of California maintain and publish a list of chemicals known to cause cancer, birth defects, and/or other reproductive harm. The list, which is updated annually, includes hundreds of chemicals found in many everyday items. The purpose of Prop 65 is to inform the public about exposure to these chemicals.

Prop 65 does not ban the sale of products containing these chemicals but instead requires warnings on any product, product packaging, or literature with the product. Moreover, a Prop 65 warning does not mean that a product is in violation of any product safety standards or requirements. In fact, the California government has clarified that a Prop 65 warning "is not the same as a regulatory decision that a product is 'safe' or 'unsafe.'" Many of these chemicals have been used in everyday products for years without documented harm. For more information, go to <https://oag.ca.gov/prop65/faqs-view-all>.

A Prop 65 warning means that a company has either (1) evaluated the exposure and has concluded that it exceeds the "no significant risk level"; or (2) has chosen to provide a warning based on its understanding about the presence of a listed chemical without attempting to evaluate the exposure.

Does this law apply everywhere?

Prop 65 warnings are required under California law only. These warnings are seen throughout California in a wide range of settings, including but not limited to restaurants, grocery stores, hotels, schools, and hospitals, and on a wide variety of products. Additionally, some online and mail order retailers provide Prop 65 warnings on their websites or in catalogs.

How do the California warnings compare to federal limits?

Prop 65 standards are often more stringent than federal and international standards. There are various substances that require a Prop 65 warning at levels that are far lower than federal action limits. For example, the Prop 65 standard for warnings for lead is 0.5 µg/day, which is well below the federal and international standards.

Why don't all similar products carry the warning?

- Products sold in California require Prop 65 labelling while similar products sold elsewhere do not.
- A company involved in a Prop 65 lawsuit reaching a settlement may be required to use Prop 65 warnings for its products, but other companies making similar products may have no such requirement.
- The enforcement of Prop 65 is inconsistent.
- Companies may elect not to provide warnings because they conclude that they are not required to do so under Prop 65; a lack of warnings for a product does not mean that the product is free of listed chemicals at similar levels.

Why does Toro include this warning?

Toro has chosen to provide consumers with as much information as possible so that they can make informed decisions about the products they buy and use. Toro provides warnings in certain cases based on its knowledge of the presence of one or more listed chemicals without evaluating the level of exposure, as not all the listed chemicals provide exposure limit requirements. While the exposure from Toro products may be negligible or well within the "no significant risk" range, out of an abundance of caution, Toro has elected to provide the Prop 65 warnings. Moreover, if Toro does not provide these warnings, it could be sued by the State of California or by private parties seeking to enforce Prop 65 and subject to substantial penalties.