



# Light Kit

## Dingo® Compact Tool Carrier

Model No. 144-7101

### Installation Instructions

# Installation

## Loose Parts

Use the chart below to verify that all parts have been shipped.

Procedure	Description	Qty.	Use
<b>1</b>	No parts required	–	Prepare the machine.
<b>2</b>	No parts required	–	Remove the access panels (TX 525 only).
<b>3</b>	Light Carriage bolt (5/16 x 1 inch) Flat washer Rubber grommet Nut (5/16 inch) Left light bracket Right light bracket Thread-forming bolt (5/16 x 3/4 inch) Curved washer (320-D or 323 traction unit only)	2 2 4 2 6 1 1 4 2	Install the right light.
<b>4</b>	Wire harness Cable tie	1 2	Route the wire harness.
<b>5</b>	Fuse (10 A)—525 traction unit only	1	Complete the installation.

# 1

## Preparing the Machine

### No Parts Required

### Procedure

1. Park the machine on a level surface.
2. Engage the parking brake.
3. Lower the loader arms.
4. Shut off the engine and remove the key.

5. Open or remove the hood, as applicable for your machine.
6. Remove the negative (-) battery cable from the battery.



# 2

## Removing the Access Panels

### TX 525 Traction Units Only

No Parts Required

### Removing the Fuse Panel

1. Pull the hairpin cotter from the bottom end of the hood prop-rod and slide the prop rod out of the retaining brackets and the prop-rod tab.

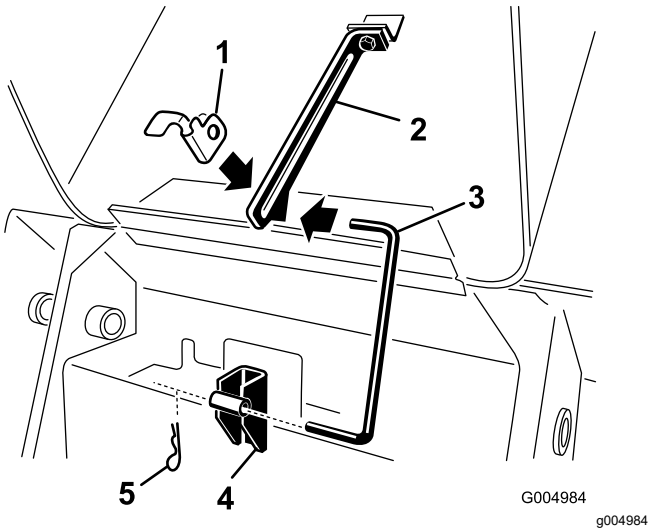


Figure 1

- |                          |                             |
|--------------------------|-----------------------------|
| 1. Prop-rod tab          | 4. Retaining bracket—bottom |
| 2. Retaining bracket—top | 5. Hairpin cotter           |
| 3. Prop rod              |                             |

2. Remove the 4 screws securing the fuse panel and then pull the panel out and up to remove it.

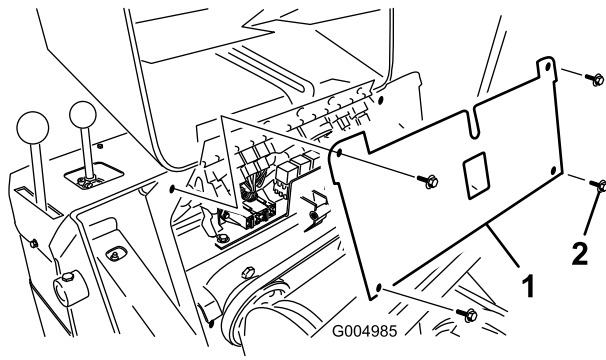


Figure 2

- |               |          |
|---------------|----------|
| 1. Fuse panel | 2. Screw |
|---------------|----------|

### Removing the Rear Panel

1. Unscrew the 2 hand knobs securing the rear-access cover to the machine (Figure 3).

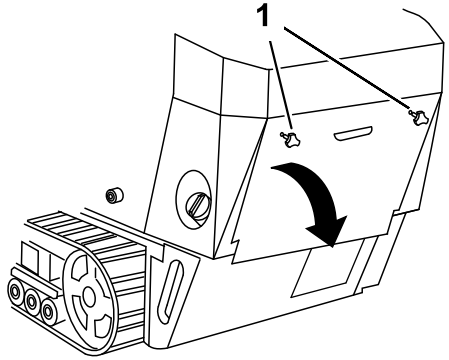


Figure 3

2. Tilt the rear-access cover down (Figure 3) and remove it to access the internal components.

# 3

## Installing the Lights

Parts needed for this procedure:

2	Light
2	Carriage bolt (5/16 x 1 inch)
4	Flat washer
2	Rubber grommet
6	Nut (5/16 inch)
1	Left light bracket
1	Right light bracket
4	Thread-forming bolt (5/16 x 3/4 inch)
2	Curved washer (320-D or 323 traction unit only)

### 320-D or 323 Traction Units

**Note:** Only 2 thread-forming bolts are needed when installing the kit on 320-D or 323 traction units.

1. Install the right light bracket.

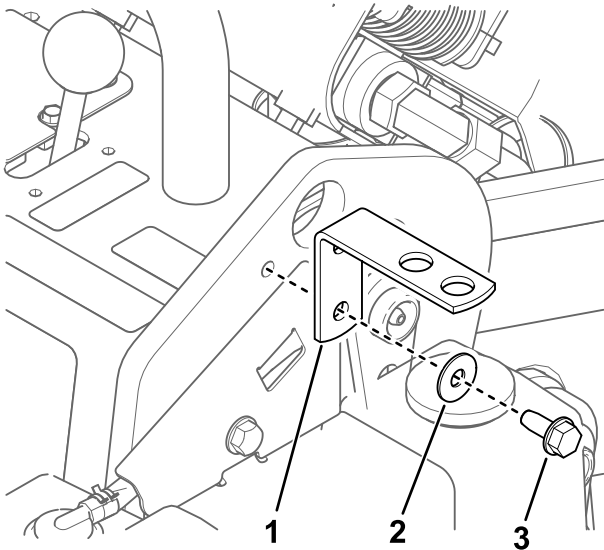


Figure 4

g342135

1. Right light bracket
2. Curved washer
3. Thread-forming bolt (5/16 x 3/4 inch)

2. Install a light to the outer hole of the bracket.

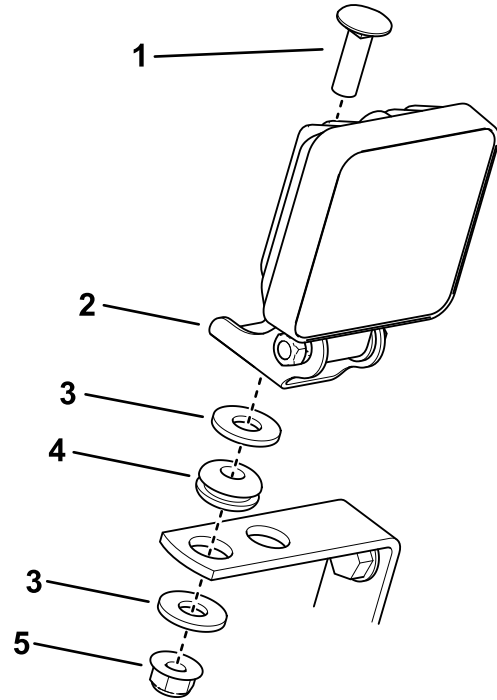


Figure 5

g342140

1. Carriage bolt (5/16 x 1 inch)
2. Light
3. Flat washer
4. Rubber grommet
5. Nut (5/16 inch)

3. Install the left light bracket.

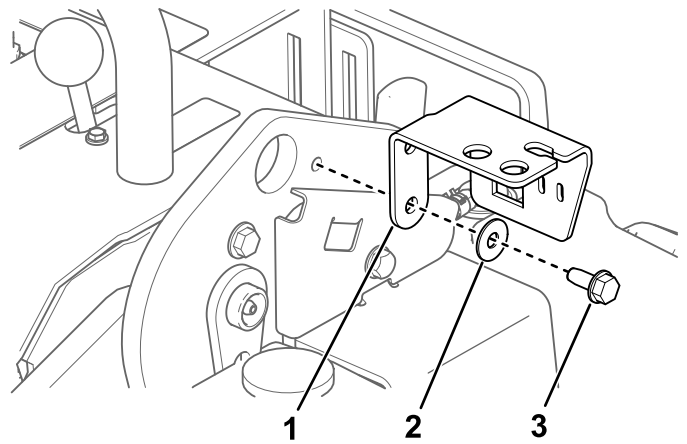
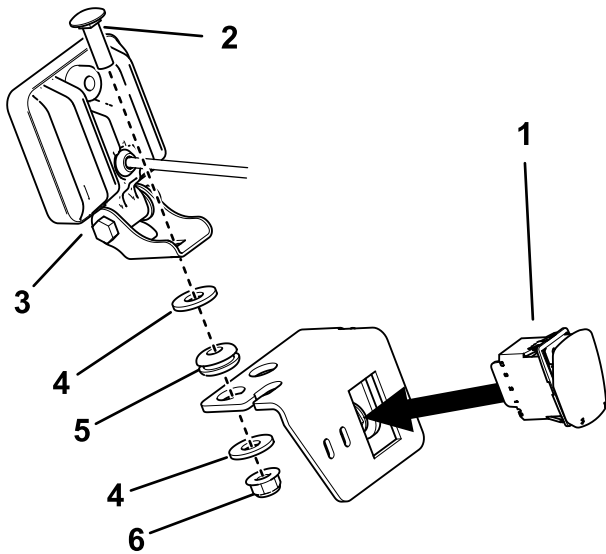


Figure 6

g342138

1. Left light bracket
2. Curved washer
3. Thread-forming bolt (5/16 x 3/4 inch)

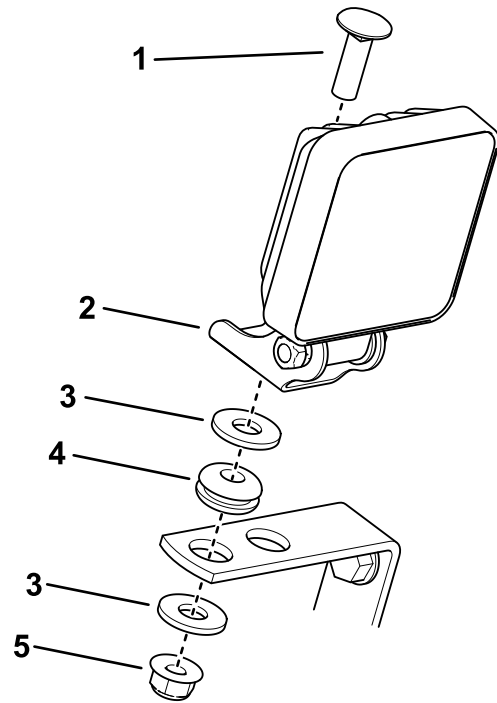
4. Install the other light and the switch to the bracket.



**Figure 7**

g342137

- |                                  |                    |
|----------------------------------|--------------------|
| 1. Switch                        | 4. Flat washer     |
| 2. Carriage bolt (5/16 x 1 inch) | 5. Rubber grommet  |
| 3. Light                         | 6. Nut (5/16 inch) |



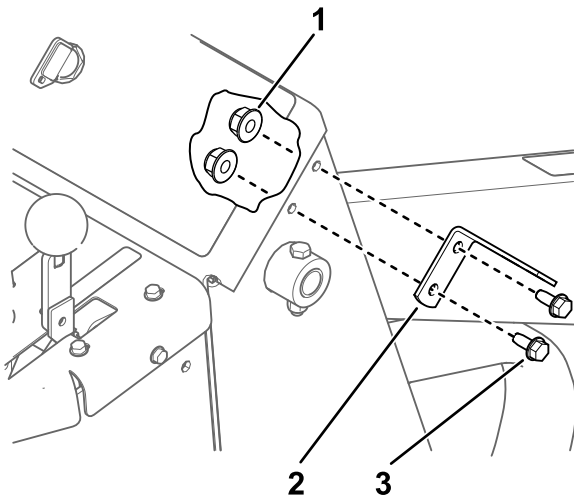
**Figure 9**

g342140

- |                                  |                    |
|----------------------------------|--------------------|
| 1. Carriage bolt (5/16 x 1 inch) | 4. Rubber grommet  |
| 2. Light                         | 5. Nut (5/16 inch) |
| 3. Flat washer                   |                    |

## TX 427 or TX 525 Traction Units

1. Install the right bracket.



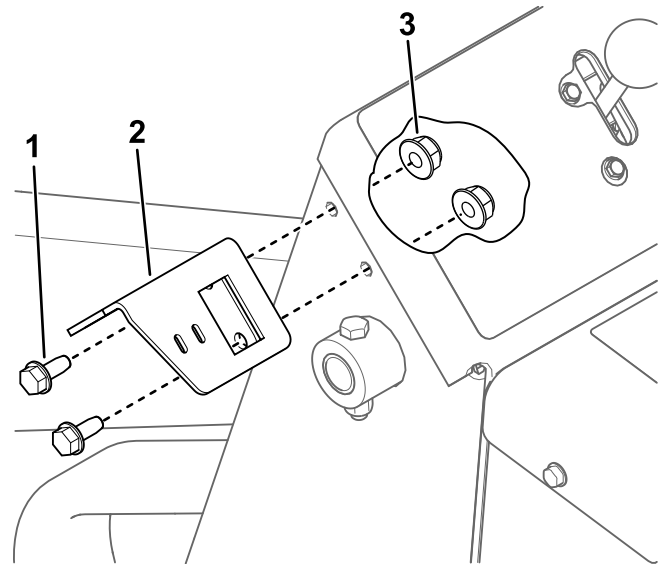
**Figure 8**

g357089

- |                        |                                          |
|------------------------|------------------------------------------|
| 1. Nut (5/16 inch)     | 3. Thread-forming bolt (5/16 x 3/4 inch) |
| 2. Right light bracket |                                          |

2. Install a light to the bracket.

3. Install the left light bracket.

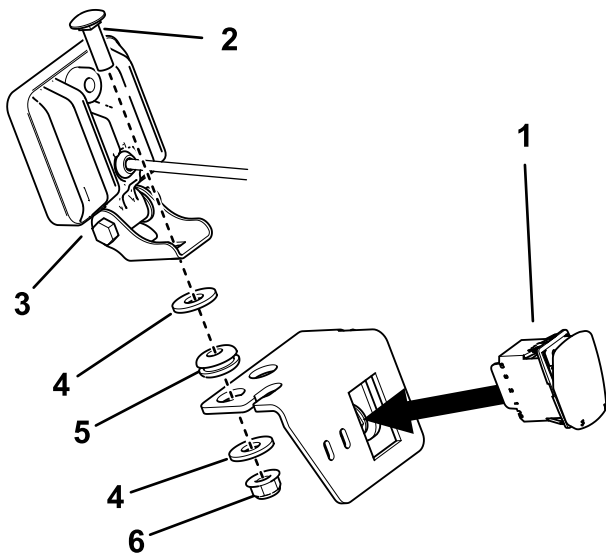


**Figure 10**

g357088

- |                                          |                    |
|------------------------------------------|--------------------|
| 1. Thread-forming bolt (5/16 x 3/4 inch) | 3. Nut (5/16 inch) |
| 2. Left light bracket                    |                    |

4. Install the other light and the switch to the bracket.



**Figure 11**

g342137

- |                                  |                    |
|----------------------------------|--------------------|
| 1. Switch                        | 4. Flat washer     |
| 2. Carriage bolt (5/16 x 1 inch) | 5. Rubber grommet  |
| 3. Light                         | 6. Nut (5/16 inch) |

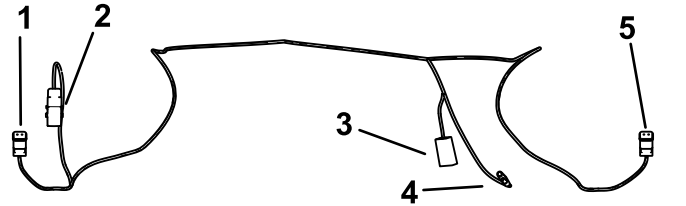
# 4

## Routing the Wire Harness

Parts needed for this procedure:

1	Wire harness
2	Cable tie

### 320-D or 323 Traction Units

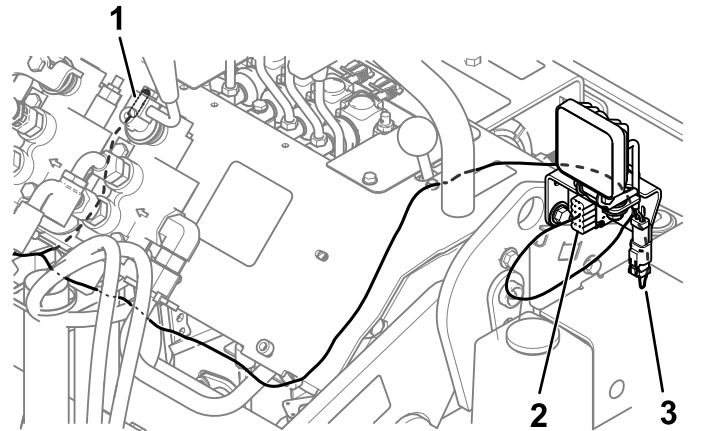


g342266

**Figure 12**

- |                |                         |
|----------------|-------------------------|
| 1. Left light  | 4. Machine main harness |
| 2. Switch      | 5. Right light          |
| 3. Fuse (10 A) |                         |

1. Connect the wire harness to the left light and switch.



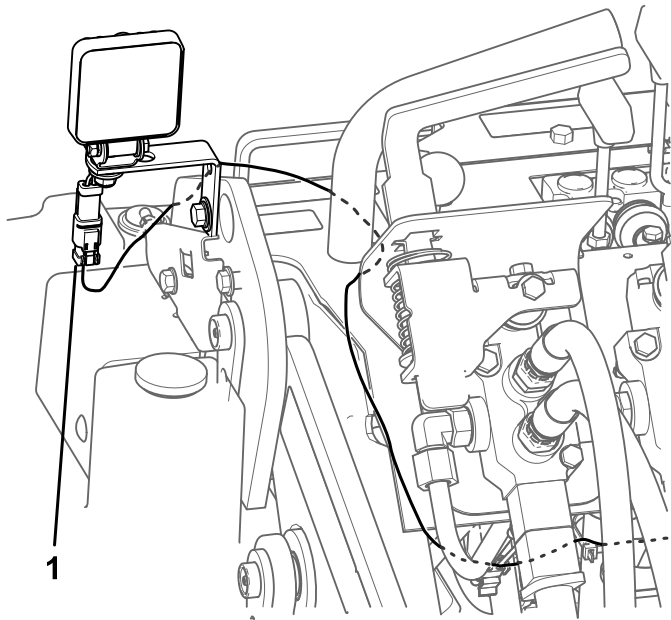
g342264

**Figure 13**

- |                                       |               |
|---------------------------------------|---------------|
| 1. Machine wire harness connector P06 | 3. Left light |
| 2. Switch                             |               |

2. Route the wire harness inside the left operator grip and then in front of the control panel, behind the hoses.
3. Connect the wire harness to the machine wire harness (P06).

- Route the wire harness behind the hoses and inside the right operator grip.

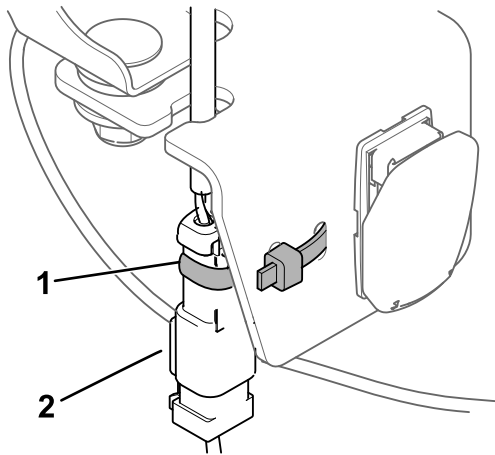


**Figure 14**

g342265

- Right light

- Connect the right light.
- Secure the wire harness to the left light bracket.

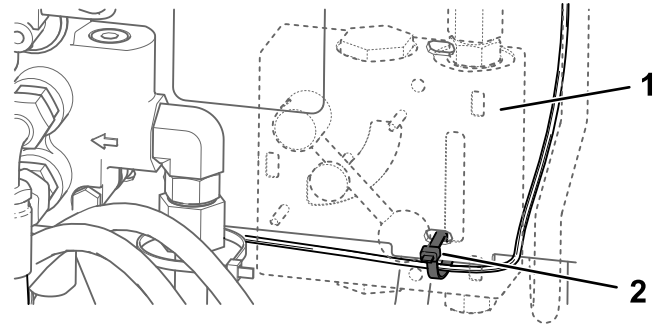


**Figure 15**

g342385

- Cable tie
- Left light wire harness

- Secure the wire harness to the bottom flow divider hose (320-D traction units only) or to the front, left side of the control panel.

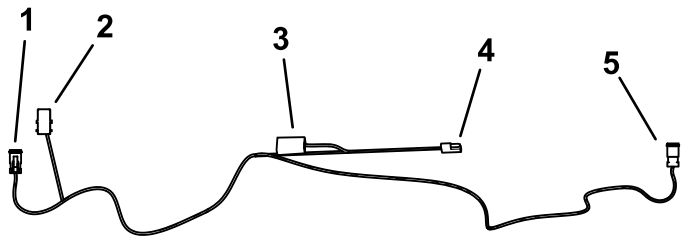


**Figure 16**

g342450

- Flow divider (320-D traction units only)
- Cable tie

## TX 427 or TX 525 Traction Units

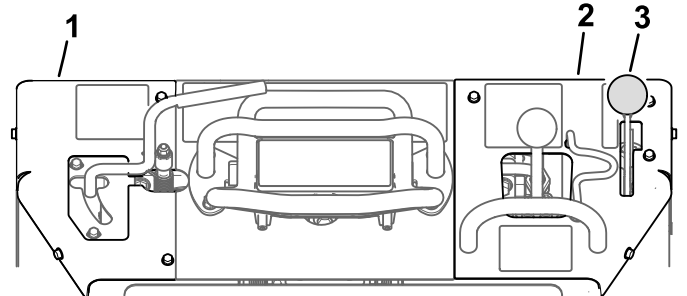


**Figure 17**

g342398

- Left light
- Switch
- Fuse (10 A)
- Machine main harness
- Right light

- Remove the brake-lever knob.



**Figure 18**

g357027

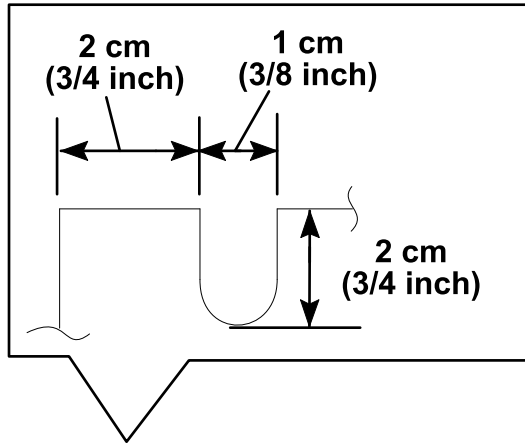
- Left control panel cover (4 bolts)
- Right control panel cover (5 bolts)
- Brake-lever knob bolts

- Remove the left and right control panel covers.
- Cut a slot in both control panel covers as shown.

**⚠ WARNING**

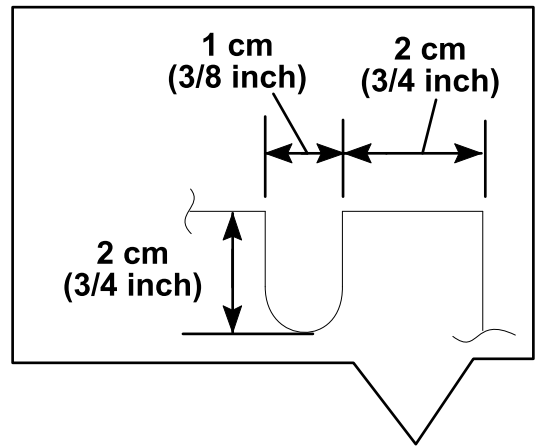
Using a drill without proper eye protection may allow debris to enter the eye, causing injury.

When drilling or carrying out other operation, always wear eye protection.



**Figure 19**  
Left control panel cover

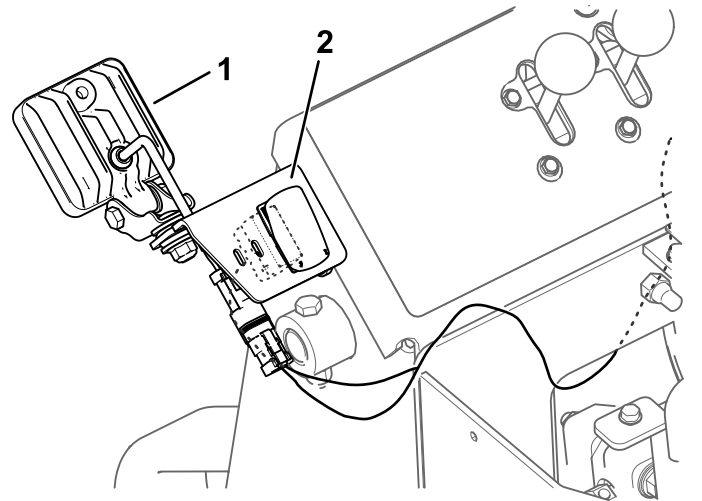
g357025



**Figure 20**  
Right control panel cover

g357024

4. Connect the wire harness to the left light and switch.



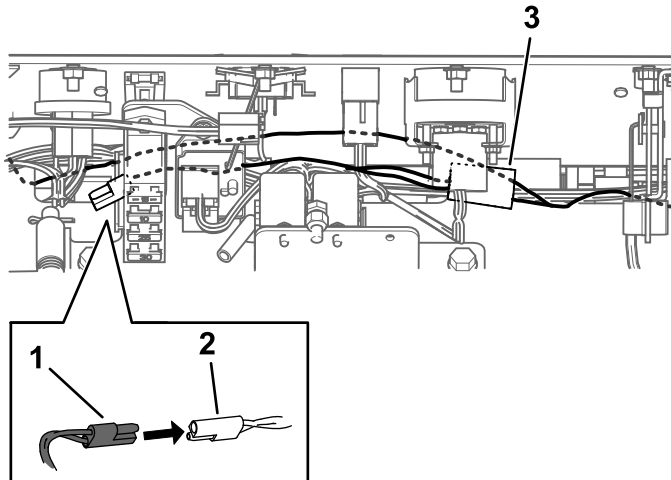
**Figure 21**

1. Left light
2. Switch

g342402

5. Route the wire harness into the control panel and through the opening in the frame toward the engine compartment.

- Route the wire harness across the front of the machine and connect the wire harness to the machine wire harness (P09).

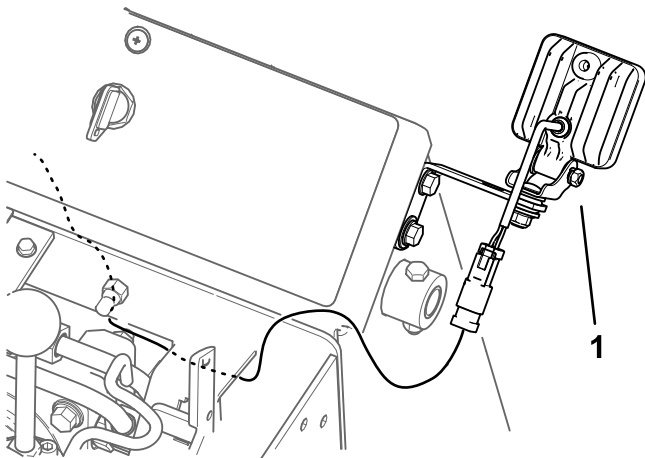


**Figure 22**

g342396

- Kit machine harness connector
- Light kit connector from machine wire harness (P09)
- Fuse connector

- Route the wire harness back to the control panel and connect it to the right light.

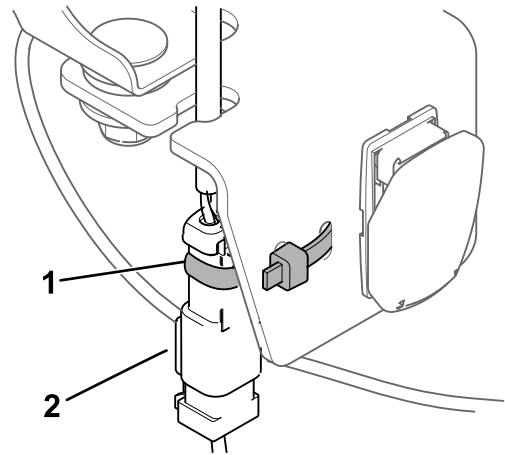


**Figure 23**

g357028

- Right light.

- Install the left and right control panel covers, ensuring that the wire harness goes through the notches (see [Figure 18](#)).
- Secure the wire harness to the left light bracket.

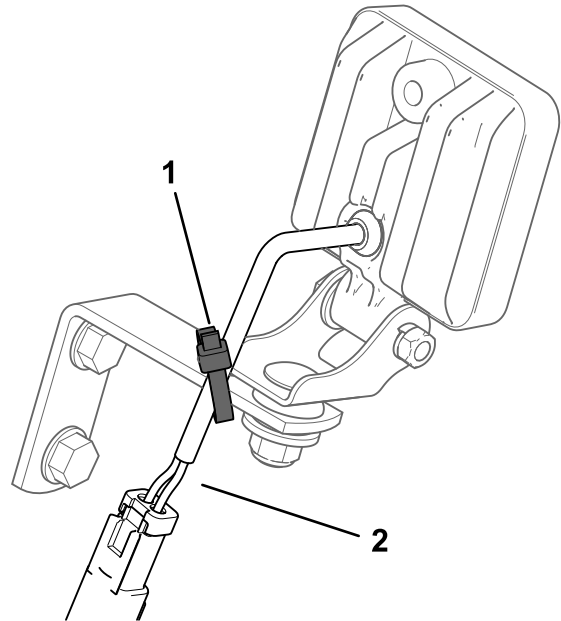


**Figure 24**

g342385

- Cable tie
- Left light wire harness

- Secure the wire harness to the right light bracket.



**Figure 25**

g342453

- Cable tie
- Right light wire harness



# 5

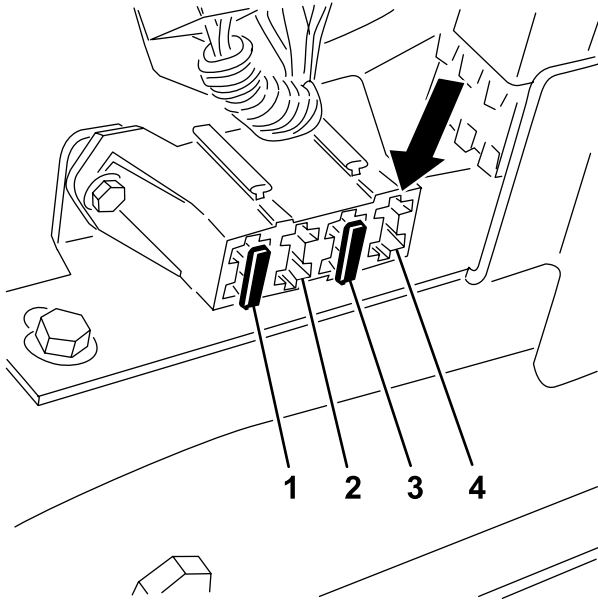
## Completing the Installation

### Parts needed for this procedure:

1	Fuse (10 A)—525 traction unit only
---	------------------------------------

### Procedure

1. For the TX 525, perform the following steps:
  - A. Install the fuse (10 A) to the fuse-block location shown in [Figure 26](#).



**Figure 26**

1. Existing fuse (30 A)
2. Empty
3. Existing fuse (10 A)
4. Add light kit fuse (10 A) here.

- B. Install the fuse and rear panels.

**Note:** Reverse the procedures for each panel as shown in [2 Removing the Access Panels \(page 2\)](#).

2. Install the negative (-) battery cable to the battery.
3. Close or install the hood, as applicable for your machine.
4. Start the machine and verify that the lights function using the switch.

**Notes:**

**Notes:**



**Count on it.**