



Muffler and Spark Arrester Kit

Z Master® Series Riding Mowers

Model No. 105-1678

Model No. 105-1679

Model No. 105-3633

Installation Instructions

Important: When you finish installing the spark arrester, store these *Installation Instructions* with your *Operator's Manual* for future reference.

Installation

Loose Parts

Use the chart below to verify that all parts have been shipped.

Procedure	Description	Qty.	Use
1	No parts required	–	Prepare the machine.
2	No parts required	–	Remove the muffler.
3	Cable heat shield Bolt (1/4 x 3/4 inch) Locknut (1/4 inch)	1 1 1	Install the cable heat shield (for Models 74240 and 74241).
4	Muffler Gasket	1 2	Install the muffler.
5	Spark arrester Self-threading screw (#8 x 1/2 inch)	1 2	Install the spark arrester.

1

Preparing the Machine

No Parts Required

Procedure

1. Park the machine on a level surface.
2. Move the motion-control levers to the NEUTRAL-LOCK position.
3. Engage the parking brake.
4. Shut off the engine and remove the key.
5. Allow the machine and engine to cool completely.

2

Removing the Muffler

No Parts Required

Procedure

1. Remove the muffler heat shield.
2. Remove the 4 nuts and lock washers securing the muffler to the studs on the engine.
3. Remove the old muffler and gaskets from the engine and ensure that you clean all the pieces of the gaskets off the engine exhaust manifold.



3

Installing the Cable Heat Shield

For Models 74240 and 74241

Parts needed for this procedure:

1	Cable heat shield
1	Bolt (1/4 x 3/4 inch)
1	Locknut (1/4 inch)

Procedure

1. Remove the bolt below the cable bracket that is installed to the engine (Figure 1).
2. Install the cable heat shield below the cable bracket using the bolt removed in step 1 (Figure 1).
Ensure that you install the cable heat shield between the muffler and cable bracket.
3. Install the bolt (1/4 x 3/4 inch) in the top of the cable bracket and into the cable heat shield (Figure 1).
4. Secure the bolt (1/4 x 3/4 inch) using the locknut (1/4 inch) as shown in Figure 1.

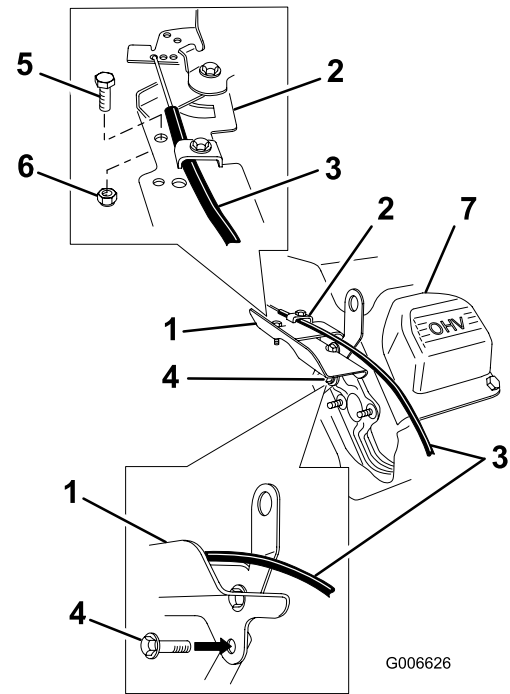


Figure 1

- | | |
|---------------------------------|--------------------------|
| 1. Cable heat shield | 5. Bolt (1/4 x 3/4 inch) |
| 2. Cable bracket | 6. Locknut (1/4 inch) |
| 3. Cable | 7. Engine |
| 4. Bolt below the cable bracket | |

4

Installing the Muffler

Parts needed for this procedure:

1	Muffler
2	Gasket

Procedure

1. Slide the 2 new gaskets over the studs on the engine.
2. Install the new muffler to the studs on the engine, securing it tightly using the previously removed lock washers and nut (Figure 2).
3. Install the muffler heat shield (Figure 2).

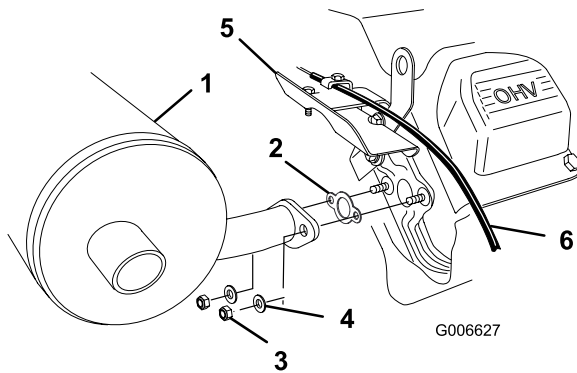


Figure 2

- | | |
|------------|----------------------------------|
| 1. Muffler | 4. Washer |
| 2. Gaskets | 5. Cable heat shield (installed) |
| 3. Nut | 6. Cable |

5

Installing the Spark Arrester

Parts needed for this procedure:

1	Spark arrester
2	Self-threading screw (#8 x 1/2 inch)

Procedure

⚠ WARNING

Hot exhaust system components may ignite fuel vapors even after shutting off the engine. Hot particles exhausted during engine operation may ignite flammable materials. Fire may result in personal injury or property damage.

Do not refuel or run the engine unless the spark arrester is installed.

1. Install the screw hole end of the spark arrester on the exhaust outlet as far as possible by hand.

Important: Do not use a hammer; otherwise, you will damage the spark arrester.

2. Secure the spark arrester to the muffler using the 2 self-threading screws (#8 x 1/2 inch) as shown in Figure 3.

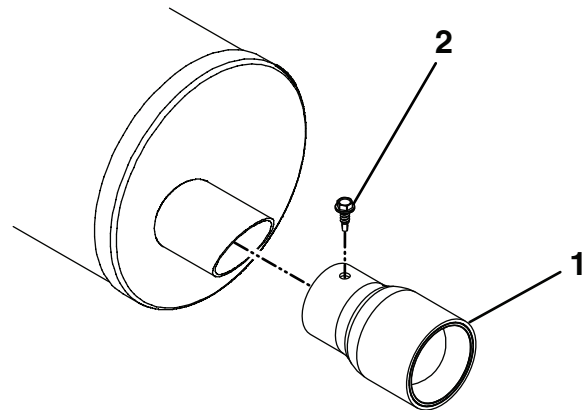


Figure 3

- | | |
|-------------------|---|
| 1. Spark arrester | 2. Self-threading screw (#8 x 1/2 inch) |
|-------------------|---|

Maintenance

Maintaining the Spark Arrester

Keep this Sheet with the *Operator's Manual* for Future Reference

Service Interval: Every 50 hours—Inspect the spark arrester for damage or build-up on the screen.

1. Park the machine on a level surface.
2. Move the motion-control levers to the NEUTRAL-LOCK position.
3. Engage the parking brake.
4. Shut off the engine and remove the key.
5. Wait for the muffler to cool completely.
6. If you observe any breaks in the screen or welds, replace the spark arrester.
7. If the screen is plugged, remove the spark arrester and remove the loose particles from the spark arrester and clean the screen using a wire brush (soak in solvent, if necessary).

Install the spark arrester to the exhaust outlet.