



**Count on it.**

**Operator's Manual**

**Broom**

**GrandStand® Multi Force Mower**

Model No. 78596—Serial No. 40000000 and Up



**⚠ WARNING**

**CALIFORNIA  
Proposition 65 Warning**

**Use of this product may cause exposure to chemicals known to the State of California to cause cancer, birth defects, or other reproductive harm.**

Model No. \_\_\_\_\_

Serial No. \_\_\_\_\_

This manual identifies potential hazards and has safety messages identified by the safety-alert symbol (Figure 2), which signals a hazard that may cause serious injury or death if you do not follow the recommended precautions.



**Figure 2**

g000502

- 1. Safety-alert symbol

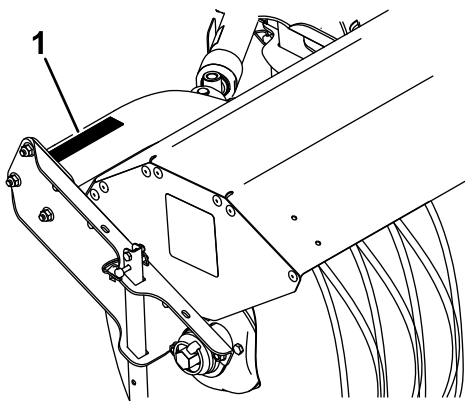
This manual uses 2 words to highlight information. **Important** calls attention to special mechanical information and **Note** emphasizes general information worthy of special attention.

# Introduction

The broom attachment is used to sweep walkways and driveways of dirt or snow. Read this information carefully to learn how to operate and maintain your product properly and to avoid injury and product damage. You are responsible for operating the product properly and safely.

You may contact Toro directly at [www.Toro.com](http://www.Toro.com) for product safety and operation training materials, accessory information, help finding a dealer, or to register your product.

Whenever you need service, genuine Toro parts, or additional information, contact an Authorized Service Dealer or Toro Customer Service and have the model and serial numbers of your product ready. Figure 1 identifies the location of the model and serial numbers on the product. Write the numbers in the space provided.



**Figure 1**

g209748

- 1. Model and serial number plate

Write the product model and serial numbers in the space below:

# Contents

- Safety ..... 3
- Training ..... 3
- Preparation ..... 3
- Operation ..... 3
- Maintenance and Storage ..... 4
- Safety and Instructional Decals ..... 4
- Setup ..... 5
- 1 Preparing the Machine ..... 5
- 2 Positioning the Casters ..... 5
- 3 Installing the Broom Lock Bracket ..... 5
- 4 Installing the Broom to the Machine ..... 6
- Operation ..... 8
- Operating the Broom ..... 8
- Checking the Sweeping Path ..... 9
- Using the Kickstands ..... 10
- Clearing a Clogged Broom ..... 10
- Removing the Broom ..... 11
- Operating Tips ..... 11
- Maintenance ..... 12
- Recommended Maintenance Schedule(s) ..... 12
- Oiling the Chain ..... 12
- Tensioning the Chain ..... 12
- Replacing the Bristles ..... 13
- Checking the Hydraulic Fluid Level ..... 15
- Storage ..... 15
- Troubleshooting ..... 16

# Safety

**Read and understand the contents of this manual before the engine is first started.**

**Improperly using or maintaining this machine could result in injury or death. To reduce this potential, comply with the following safety instructions.**

## Training

- Read the operating and service instruction manual carefully. Be thoroughly familiar with the controls and the proper use of the machine. Know how to stop the machine and disengage the controls quickly.
- Do not allow adults to operate the machine without proper instruction.

## Preparation

### **⚠ CAUTION**

**Operating a powered machine can result in foreign objects being thrown into your eyes.**

**Always wear safety glasses or eye shields during operation or while performing an adjustment or repair.**

- Keep the area of operation clear of all persons, particularly small children, and pets.
- Thoroughly inspect the area where you will use the machine and remove all doormats, sleds, boards, wires, and other foreign objects.
- Do not operate the machine without wearing appropriate personal protective equipment such as hearing protection, safety glasses or goggles, dust mask, and long pants. Tuck in scarf ends. Wear substantial, slip-resistant footwear. Tie back long hair. Do not wear jewelry.
- Let the engine and machine adjust to outdoor temperatures before starting to clear snow.

# Operation

- Never allow children to operate the machine.
- Do not put hands or feet near or under rotating parts. Keep clear of the discharge opening at all times.
- Never direct discharge at bystanders or allow anyone in front of the machine.
- Take all possible precautions when leaving the machine unattended. Release the broom-drive lever, traction-drive lever, shut off the engine, and remove the key.
- Always be sure of your footing, and keep a firm hold on the handles. Walk; never run.
- Never operate the machine without good visibility or light.
- Do not operate the machine while ill, tired, or under the influence of alcohol or drugs.
- Exercise caution to avoid slipping or falling, especially when operating the machine in the reverse travel direction.
- Shut off the engine whenever you leave the operating position, before unclogging the broom housing, and when making any repairs, adjustments, or inspections.
- Exercise extreme caution when operating on or crossing gravel drives, walks, or roads. Stay alert for hidden hazards or traffic.
- Never operate the machine at high transport speeds on slippery surfaces. Use care when reversing.
- Do not clear snow, dirt, or thatch across the face of slopes. Exercise extreme caution when changing direction on slopes. Do not attempt to clear steep slopes.
- Never operate the machine near glass enclosures, automobiles, window wells, drop offs, etc. without proper adjustment of the discharge angle. Keep children and pets away.
- Do not overload the machine capacity by attempting to clear snow, dirt, or thatch at too fast of a rate.
- Do not run the engine indoors, except when starting it and when moving the machine in or out of the building. Open the outside doors; exhaust fumes are dangerous.
- When cleaning, repairing, or inspecting, shut off the engine and remove the key. Ensure that the rotary broom and all moving parts have stopped.
- Disengage the power to the rotary broom when the machine is transported or not in use.
- After striking a foreign object, shut off the engine, remove the key, thoroughly inspect the machine for any damage, and repair the damage before starting and operating the machine.

- If the machine should start to vibrate abnormally, shut off the engine and check immediately for the cause. Vibration is generally a warning of trouble.
- Never operate the machine without proper guards, plates, or other safety protective devices in place.
- Use only attachments and accessories approved by the manufacturer of the machine (such as wheel weights, counterweights, cabs, etc.).

- Never store the machine with fuel in the fuel tank inside a building where ignition sources are present, such as hot water and space heaters, clothing dryers, etc. Allow the engine to cool before storing the machine in any enclosure.
- Always refer to the instructions in the *Operator's Manual* for important details if the machine is to be stored for an extended period.
- Maintain or replace the safety and instruction decals, as necessary.
- When operating in snow conditions, run the machine for a few minutes after sweeping snow to prevent freeze up of the broom and housing.

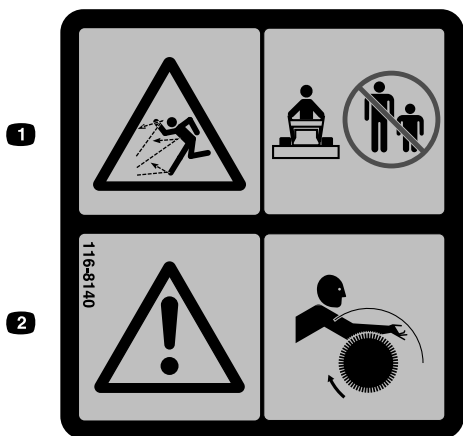
## Maintenance and Storage

- Never attempt to make any adjustments while the engine is running (except where specifically recommended by the manufacturer).
- Check all of the fasteners at frequent intervals for proper tightness to ensure that the machine is in safe, working condition.

## Safety and Instructional Decals



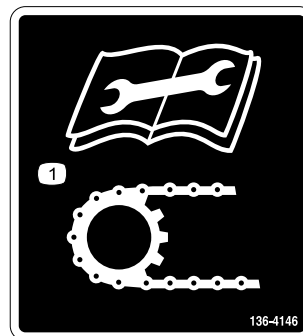
Safety decals and instructions are easily visible to the operator and are located near any area of potential danger. Replace any decal that is damaged or missing.



116-8140

decal116-8140

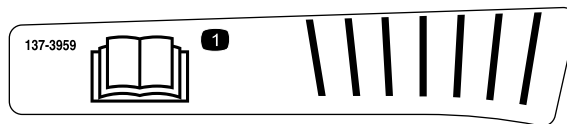
1. Thrown object hazard—Do not operate when people and pets are in the area.
2. Warning—Entanglement hazard—stay clear of the rotating broom.



136-4146

decal136-4146

1. Read the *Operator's Manual* before performing maintenance on the chain.



137-3959

decal137-3959

1. Read the *Operator's Manual*.

# Setup

Install the following on your machine before you install the broom:

- Float Kit (optional)
- High Flow Hydraulic Kit (required)
- Low Flow Hydraulic Kit (required)
- Pneumatic casters (recommended)
- Quick-Attach Kit (required)
- Snow Tires (required for winter application)
- Wheel Weight Kit (recommended)

A Lift Cylinder Lock Kit (Toro part no. 137-4106) is available to secure the A-frame when you raise it for setup or maintenance; contact your Authorized Toro Dealer.

## 1

### Preparing the Machine

No Parts Required

#### Procedure

1. Park the machine on a level surface.
2. Disengage the PTO, engage the parking brake, and move the motion-control levers outward to the NEUTRAL-LOCK position.
3. Raise the A-frame and support it using blocks or a cylinder lock.
4. Shut off the engine and remove the key.

## 2

### Positioning the Casters

No Parts Required

#### Procedure

Remove the nut and bolt from each caster, move the caster to the middle position, and install the nut and bolt (Figure 3). Torque to 91 to 113 N·m (67 to 83 ft-lb).

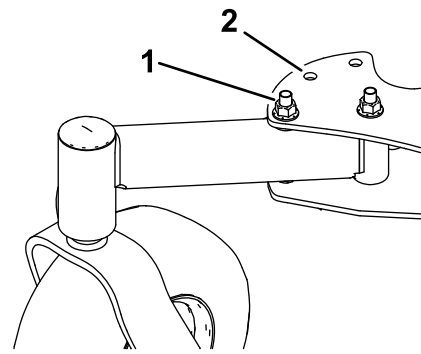


Figure 3

1. Nut and bolt
2. Middle position

g210119

## 3

### Installing the Broom Lock Bracket

No Parts Required

#### Procedure

1. Remove the 4 carriage bolts (3/8 x 2-1/2 inches), 4 nuts (3/8 inch), and the lock bracket (Figure 4).

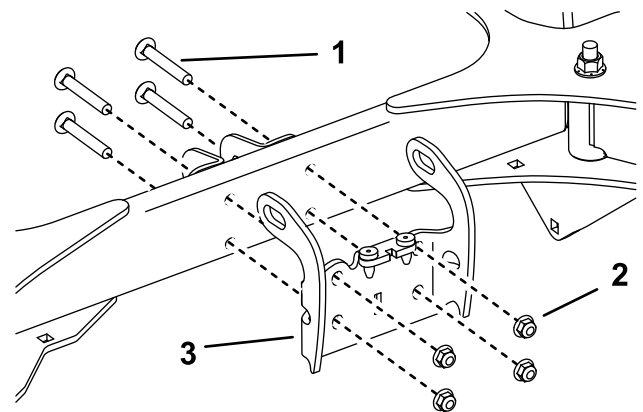
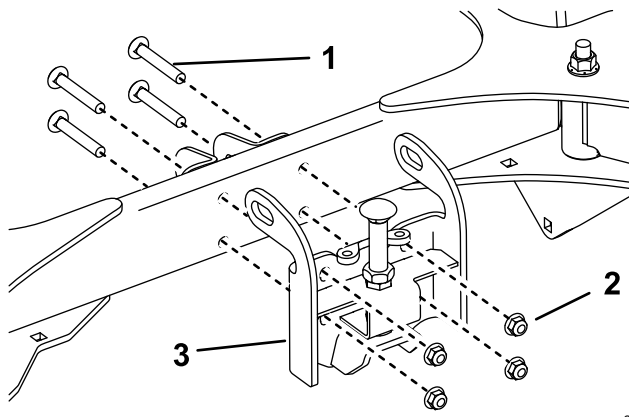


Figure 4

1. Carriage bolt (3/8 x 2-1/2 inches)
2. Nut
3. Lock bracket

g210329

2. Use the fasteners that you just removed to install the broom lock bracket (Figure 5). Torque to 37 to 45 N·m (27 to 33 ft-lb).



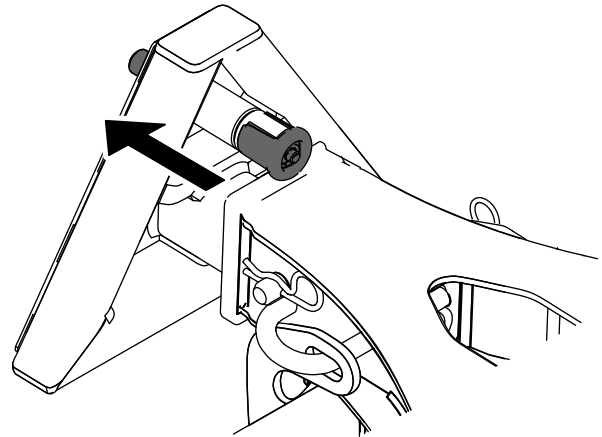
**Figure 5**

g210328

1. Carriage bolt (3/8 x 2-1/2 inches)
2. Nut
3. Broom lock bracket

4. Engage the quick pin on the machine quick-attach assembly (**Figure 7**).

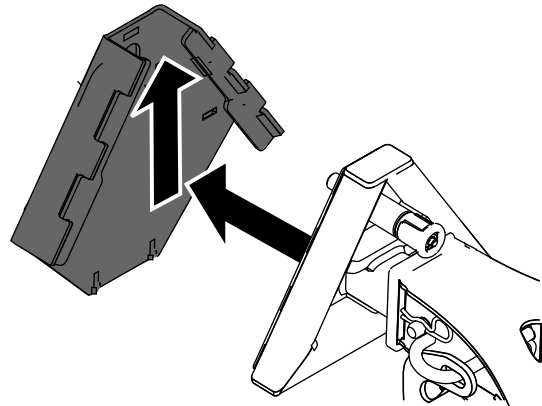
**Note:** The pin will protrude from the quick-attach triangle.



**Figure 7**

g196445

5. Slowly move the machine up to the broom so that the quick-attach triangle of the machine enters the broom quick-attach triangle and presses the engagement pin (**Figure 8**).



**Figure 8**

g196446

6. If necessary, adjust the coupler channel as follows:

- A. Loosen the fasteners on the channel, slide the channel up or down, and tighten the fasteners (**Figure 9**).

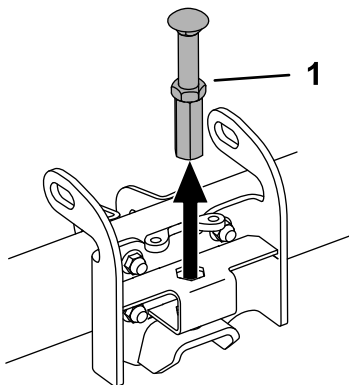
# 4

## Installing the Broom to the Machine

No Parts Required

### Procedure

1. Place the broom on a level floor with the kick stands in the down position; refer to [Using the Kickstands](#) (page 10).
2. Remove the stop assembly from the broom lock bracket (**Figure 6**).

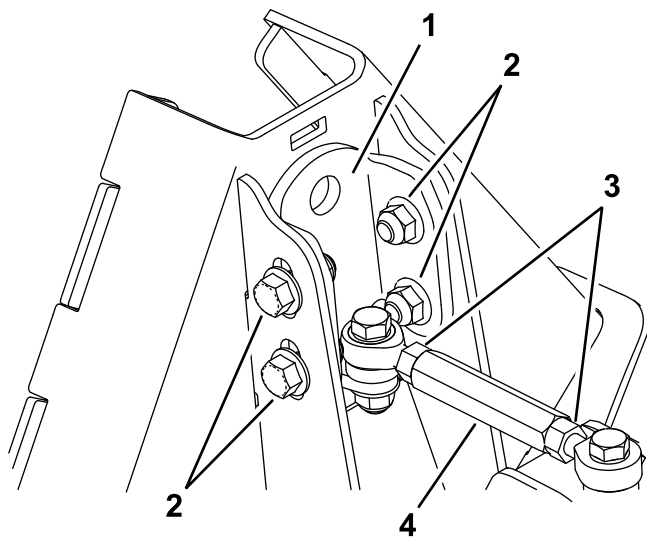


**Figure 6**

g214226

1. Stop assembly

3. Ensure that the hydraulic hoses are out of the way from the broom quick-attach triangle.

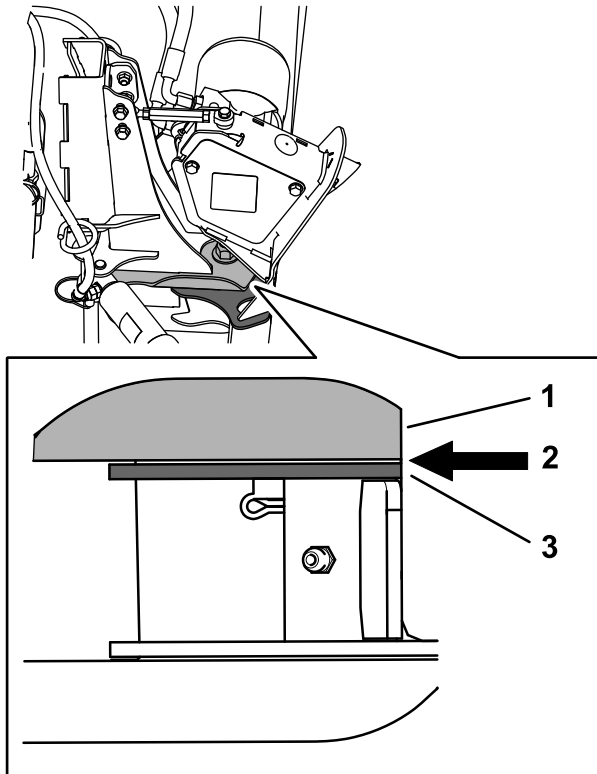


**Figure 9**

g210217

- |                      |               |
|----------------------|---------------|
| 1. Coupler channel   | 3. Hex nut    |
| 2. Channel fasteners | 4. Turnbuckle |

B. Loosen the hex nuts to adjust the length of the turnbuckle as needed (Figure 9). As you adjust the turnbuckle, ensure that there is enough space between the upper plate and upper channel that you can slide a sheet of paper between them (Figure 10).



**Figure 10**

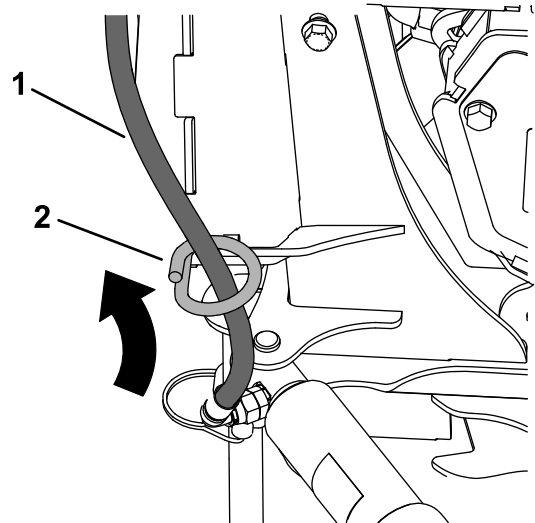
g210218

- |   |                |
|---|----------------|
| 1. Upper channel                          | 3. Upper plate |
| 2. Enough space to slide a sheet of paper |                |

7. Install the stop assembly (Figure 6).
8. Use the A-frame switch from the low flow kit to raise the quick-attach triangle until the pin snaps into place on the broom quick-attach triangle.

**Note:** Ensure that the quick pin is fully seated; lower and raise the machine quick-attach triangle to assist the engagement.

9. Route the hoses through the hose guides on the left and right sides of the broom quick-attach triangle (Figure 11).



**Figure 11**

g210818

- |         |               |
|---------|---------------|
| 1. Hose | 2. Hose guide |
|---------|---------------|

10. Connect the hoses from the broom motor to the high flow assembly.

**Note:** Do not engage the high flow pump without the broom hydraulic hoses attached.

11. Connect the hoses from the broom cylinders to the quick connects on the left side of the machine A-frame.
12. Set the bristle engagement; refer to [Checking the Sweeping Path](#) (page 9).

# Operation

## Operating the Broom

### **⚠ DANGER**

When the machine is in operation, contact with a rotating broom can result in serious personal injury to you or bystanders.

- Before adjusting, cleaning, inspecting, troubleshooting, or repairing the machine, shut off the engine and wait for all moving parts to stop. Remove the key to prevent someone from accidentally starting the engine.
- Stay behind the handles and away from the broom while operating the machine.
- Keep your face, hands, feet, and any other part of your body or clothing away from concealed, moving, or rotating parts.

### **⚠ WARNING**

The rotating broom can throw stones and other foreign objects, causing serious personal injury to you or bystanders.

- Keep the working area clear and free of all objects that the broom could pick up and throw.
- Keep all children and pets away from the area of operation.

Engage the PTO switch to start the broom (Figure 12).

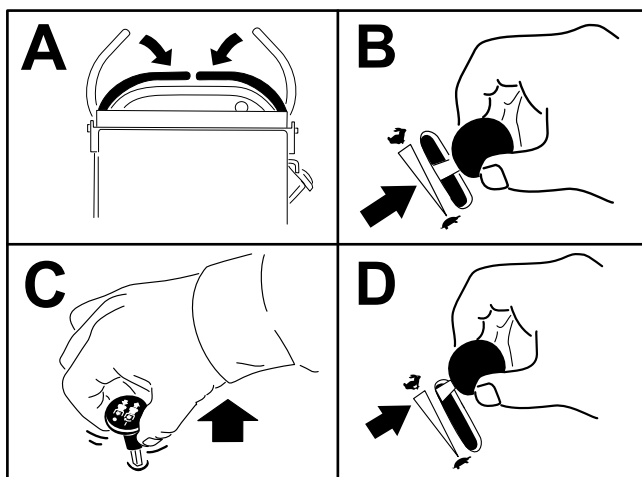
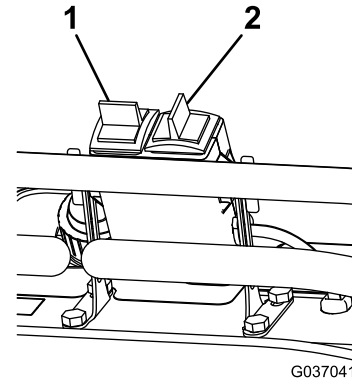


Figure 12

g197269

Use the switches from the Low Flow Hydraulic kit to operate the broom (Figure 13).

- Move the left switch up or down to raise or lower the broom.
- Move the right switch left or right to angle the broom.



G037041

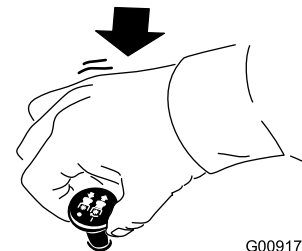
g037041

Figure 13

1. A-frame switch

2. Angle switch

Disengage the PTO to stop the broom (Figure 14).



G009174

g009174

Figure 14

If the machine has an optional Float Kit installed, move the switch to the FLOAT position to allow the broom to follow the contour of the ground (Figure 15). Move the switch to the normal operating position to control the broom using hydraulics.

Check the sweeping path of the bristles when you move the switch to the FLOAT position so that you limit the engagement of the bristles with the ground; refer to [Checking the Sweeping Path \(page 9\)](#).



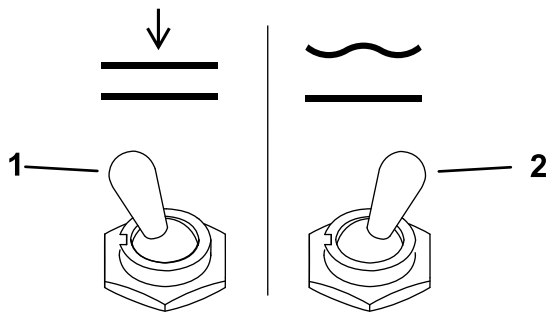


Figure 15

g210832

1. Lower to normal operating position
2. Float position

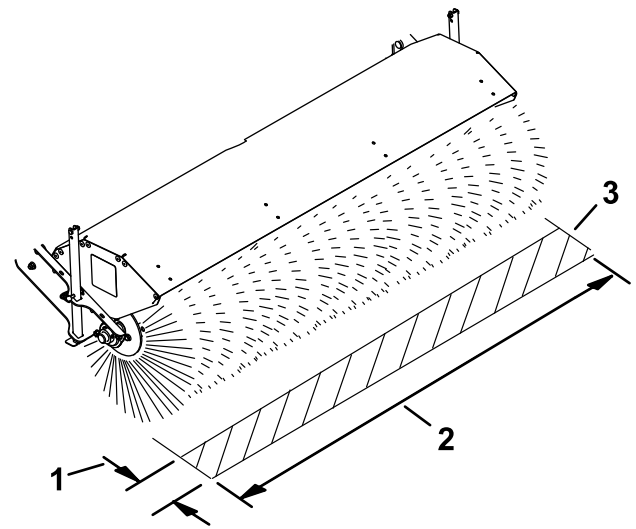


Figure 16

g197271

1. 51 to 102 mm (2 to 4 inches) maximum width
2. Length of broom
3. Swept area

## Checking the Sweeping Path

**Service Interval:** Before each use or daily

A broom sweeps with the tips of its bristles. When you apply too much downward pressure, the broom no longer uses its tips; the broom is now working with the sides of the bristles. This limits the flicking action of the bristles and sweeping effectiveness, decreasing the service life of the broom.

1. Drive to a flat, dusty or snowy area and stop the machine.
2. Engage the broom, lower it to the ground to sweep away some snow or debris, and then raise it.
3. Disengage the broom and shut off the machine.
4. Wait for all moving parts to stop before leaving the operating position.
5. Make sure that the area swept equals the length of the broom and a maximum width of 51 to 102 mm (2 to 4 inches) as shown in [Figure 16](#).

**Note:** If you are using a Float Kit with the broom, the maximum width should be approximately 102 mm (4 inches).

6. If the width of the area swept is incorrect, adjust the machine A-frame stop as follows:
  - A. Support the A-frame using blocks or a cylinder lock.
  - B. Loosen the jam nut.
  - C. Adjust the stop bolt until it holds the A-frame at the correct height above the machine frame ([Figure 17](#)).

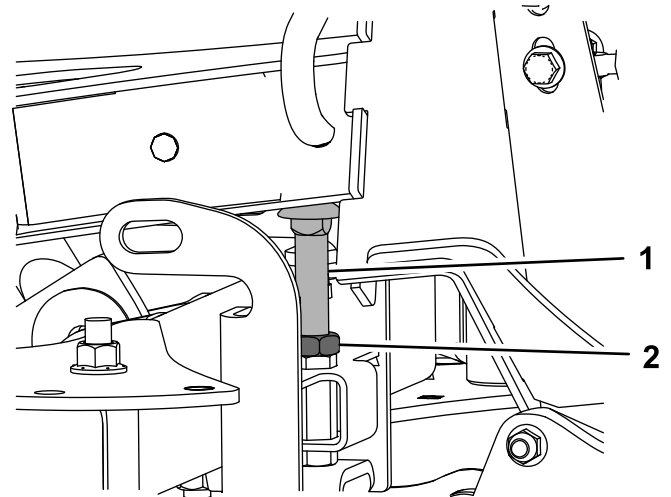


Figure 17

g210244

1. Stop bolt
2. Jam nut

- D. Tighten the jam nut to lock the bolt in position.
- E. Remove the blocks or cylinder lock and repeat the procedure to verify the correct sweeping path.

# Using the Kickstands

Use the kickstands to raise the broom off the ground when you are not using the machine, performing maintenance, or storing the broom. This eliminates unnecessary pressure on the bristles.

**Important:** Do not operate the machine with the kickstands down.

1. Park the machine on a level surface, disengage the PTO, move the motion-control levers to the NEUTRAL-LOCK position, and engage the parking brake.
2. Shut off the engine, remove the key, and wait for all moving parts to stop before leaving the operating position.
3. Raise the A-frame and support it using blocks or a cylinder lock.
4. Lower the left, right, and rear kickstands (Figure 18).

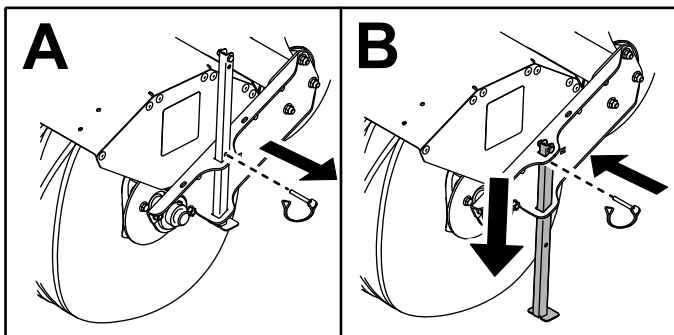


Figure 18

g196494

# Clearing a Clogged Broom

## ⚠ WARNING

The rotating broom could cause serious injury.

**Shut off the machine and allow all rotating parts to stop before cleaning the broom.**

1. Stay in the operating position and release the left traction-drive lever.
2. While engaging the broom, raise the broom above the ground.

If you cannot unclog the broom by lifting it into the air, clear the broom as follows:

1. Park the machine on a level surface, disengage the PTO, move the motion-control levers to the NEUTRAL-LOCK position, and engage the parking brake.
2. Shut off the engine, remove the key, and wait for all moving parts to stop before leaving the operating position.
3. While wearing thickly-padded gloves, use caution to manually clear foreign objects out of the broom.

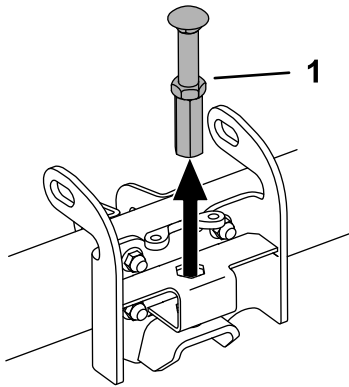
## ⚠ CAUTION

Sharp objects can become entangled in the bristles and can cause personal injury.

**Wear gloves and use caution when cleaning foreign objects out of the broom; never use your bare hands.**

# Removing the Broom

1. Park the machine on a level surface, disengage the PTO, move the motion-control levers to the NEUTRAL-LOCK position, and engage the parking brake.
2. Raise the A-frame and support it using blocks or a cylinder lock.
3. Shut off the engine, remove the key, and wait for all moving parts to stop before leaving the operating position.
4. Lower the kickstands on the broom; refer to [Using the Kickstands \(page 10\)](#).
5. Remove the stop assembly.



**Figure 19**

g214226

# Operating Tips

- If the ground speed is too fast, debris will pile up in front of the broom, causing it to bulldoze instead of sweep. This can damage the broom.
- More pressure does not give a better sweep, but it will wear out the broom faster.
- A level broom lasts longer.

1. Stop assembly

- 
6. Remove the blocks or cylinder lock.
  7. Disconnect the hoses from the low-flow assembly and plug them together.
  8. Disconnect the hoses from the high-flow assembly and plug them together.
  9. Plug the rubber caps into the quick-disconnect fittings on the machine.
  10. Disengage the quick pin on the machine quick-attach assembly ([Figure 7](#)).
  11. Use the machine hydraulics to lower the broom so that there is no weight on the machine quick-attach triangle.
  12. Move the broom hoses away from the machine and back the machine out of the broom triangle.
  13. Install the stop assembly as shown in [Figure 19](#) or store it in a safe location.

# Maintenance

## Recommended Maintenance Schedule(s)

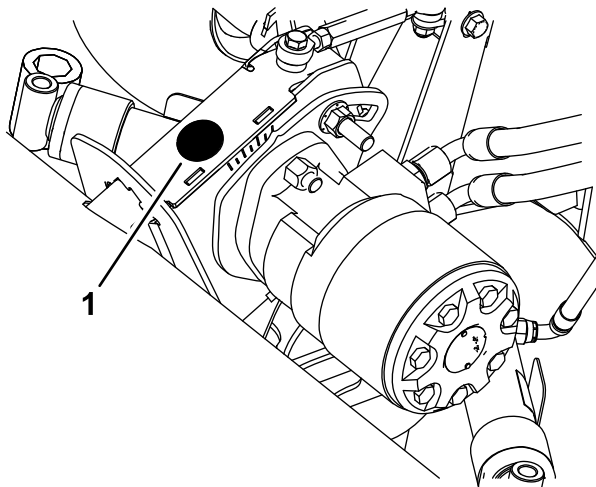
Maintenance Service Interval	Maintenance Procedure
Before each use or daily	<ul style="list-style-type: none"> <li>• Check the sweeping path.</li> <li>• Oil the chain.</li> <li>• Check the hydraulic fluid.</li> </ul>
Every 40 hours	<ul style="list-style-type: none"> <li>• Check the chain tension.</li> </ul>
Before storage	<ul style="list-style-type: none"> <li>• Oil the chain.</li> <li>• Clean the machine.</li> </ul>

## Oiling the Chain

**Service Interval:** Before each use or daily  
Before storage

Use Toro Premium All Season Hydraulic Oil or SAE 20 oil.

1. Raise the broom all the way up using the hydraulic controls.
2. Lower the kickstands; refer to [Using the Kickstands \(page 10\)](#).
3. Remove the rubber plug on the chain housing and insert it into the housing with the cup side up ([Figure 20](#)).



**Figure 20**

g196532

1. Rubber plug

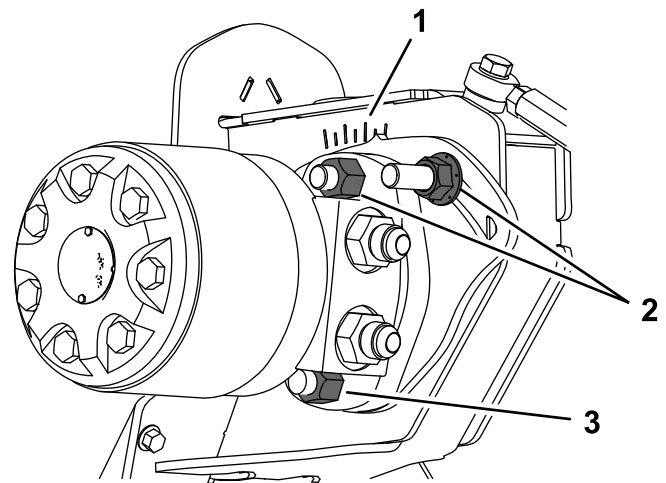
4. Fill the rubber plug with oil.
5. Start the machine and run it at low idle.
6. Engage the PTO and run the broom at low idle until the plug is out of oil.

7. Remove the plug and install it with the flat face up to prevent it from filling with debris during operation.

## Tensioning the Chain

**Service Interval:** Every 40 hours

1. Loosen, but do not remove, the 3 mounting bolts on the broom motor until you can rotate the motor around the lower bolt ([Figure 21](#)).



**Figure 21**

Hoses not shown for clarity

g196561

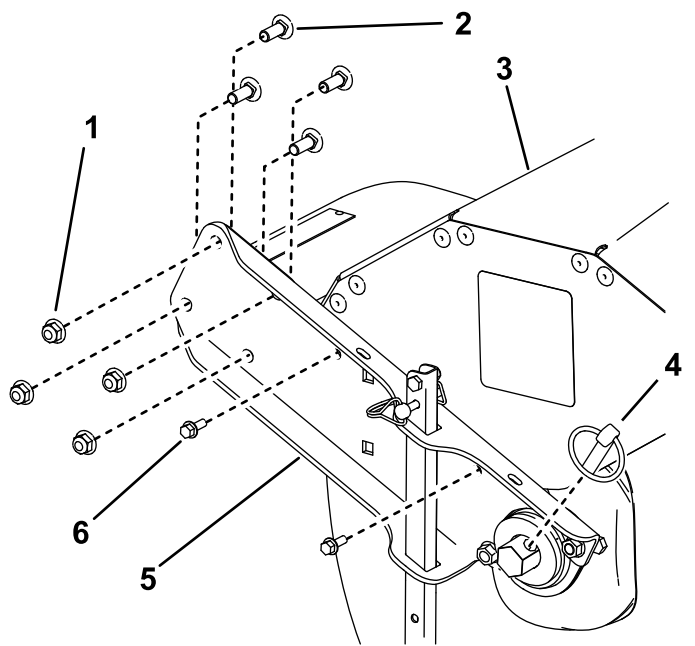
1. Notches
  2. Top mounting bolts
  3. Lower mounting bolt
2. Rotate the motor clockwise until the chain is tight, then rotate it counterclockwise 6 mm (1/4 inch) or 1 notch to allow some slack in the chain.
  3. Torque the mounting bolts to 102 N·m (75 ft-lb).

# Replacing the Bristles

Replace the bristles when they are worn to a 33 cm (13 inch) diameter from the original 51 cm (20 inch) diameter. Check the condition of the wear plate when you replace the bristles (see [Figure 25](#)); if the wear plate is worn through, replace it.

**Note:** Replace all bristles at the same time; otherwise, a mix of old and new bristles will reduce performance.

1. Park the machine on a level surface, disengage the PTO, engage the parking brake, and move the motion-control levers outward to the NEUTRAL-LOCK position.
2. Raise the A-frame and support it using a block or cylinder lock.
3. Shut off the engine and remove the key.
4. Lower the kickstands; refer to [Using the Kickstands \(page 10\)](#).
5. Remove the 2 bolts (1/4 x 3/4 inch) on the left and right sides of the broom ([Figure 22](#)).

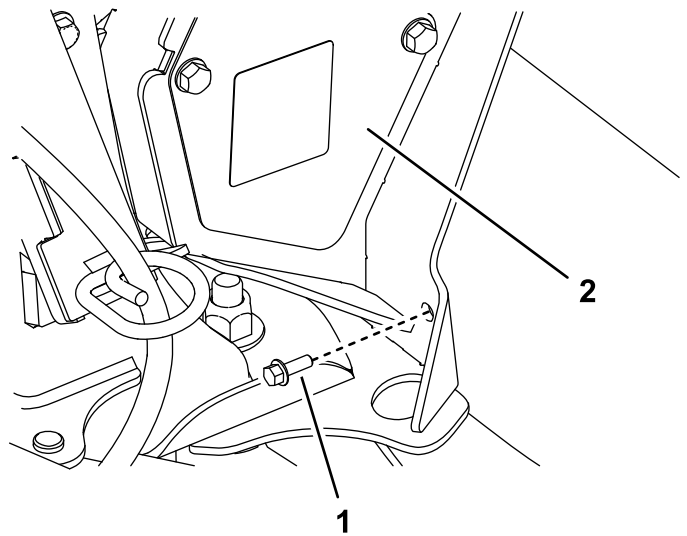


**Figure 22**

g210320

- |                                   |                            |
|-----------------------------------|----------------------------|
| 1. Nut—3/8 inch (4)               | 4. Lynch pin               |
| 2. Carriage bolt—3/8 x 1 inch (4) | 5. Broom bracket           |
| 3. Hood                           | 6. Bolt—1/4 x 3/4 inch (2) |

6. Remove a rear bolt from both sides of the drive assembly and remove the hood ([Figure 23](#)).

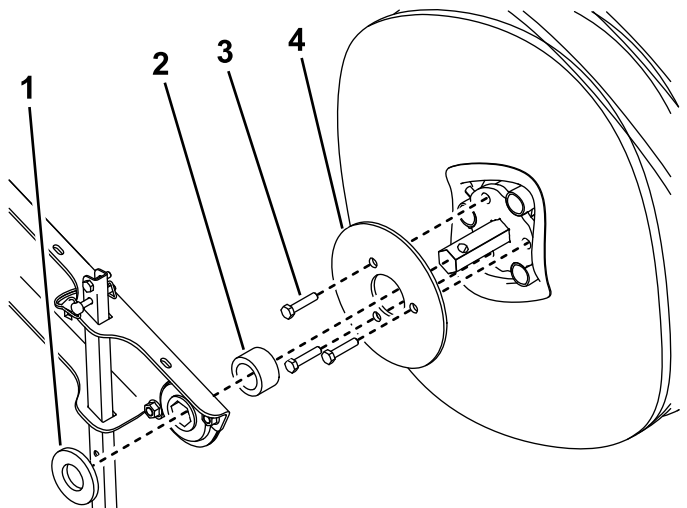


**Figure 23**

g210851

1. Rear bolt (1/4 x 3/4 inch)
2. Drive assembly

7. Remove the 4 carriage bolts (3/8 x 1 inch), 4 nuts (3/8 inch), and the lynch pin on the left and right sides of the broom to separate the broom from the assembly ([Figure 22](#)).
8. On 1 side of the broom, remove the washer, slide the broom out of the bracket, and remove the spacer ([Figure 24](#)).



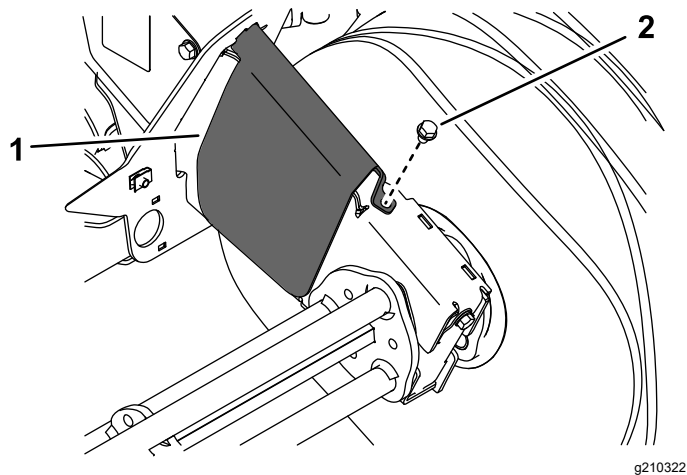
**Figure 24**

g210321

- |           |                              |
|-----------|------------------------------|
| 1. Washer | 3. Bolt (3/8 x 1-1/2 inches) |
| 2. Spacer | 4. Cover plate               |

9. Remove the 3 bolts (3/8 x 1-1/2 inches) and the cover plate ([Figure 24](#)).
10. Slide the brushes off the broom.

- If you are replacing the wear plate, remove the bolt and wear plate, and use the bolt to install the new wear plate (Figure 25).

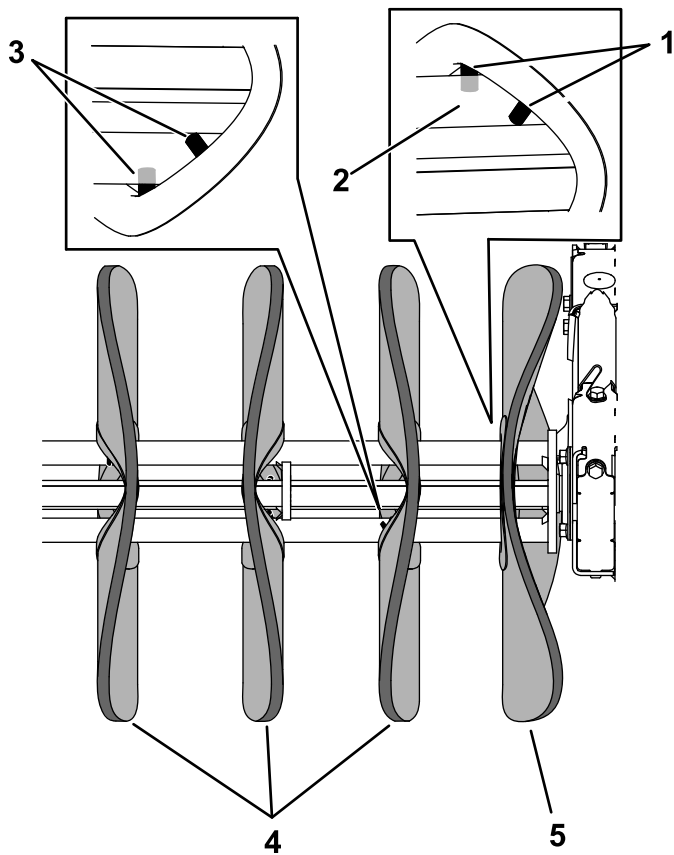


**Figure 25**

- Wear plate
- Bolt

- With the bristles curved toward the center of the broom, slide the new center brush onto the axle so that the prongs straddle 1 of the rods (Figure 26).

**Note:** The middle ring of the center brush is flatter than the ring on the other brushes.

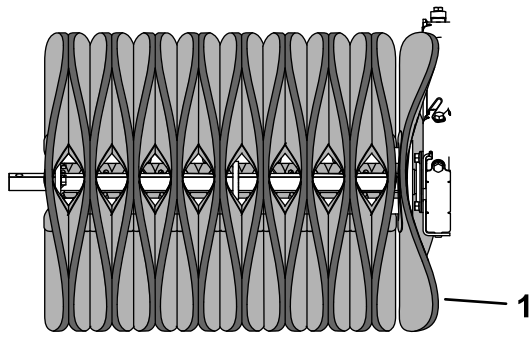


**Figure 26**

- Prongs
- Rod
- Prongs straddling an adjacent rod
- Brushes
- Center brush

- Slide a brush onto the axle so that the prongs straddle an adjacent rod and curve away from the center brush (Figure 26).
- Slide the next brush onto the axle, with the brush rotated so that the pins straddle the third rod and the curves are opposite to the previous brush (Figure 26).
- Continue sliding the brushes onto the axle, rotating the prongs around the axle and alternating the curve of the brushes, until all the brushes are installed (Figure 27).

**Note:** If you do not rotate the prongs around the axle or alternate the direction of the brush curves, it may be difficult to secure the cover plate. The prongs on the last brush need to curve inward.



**Figure 27**

1. Center brush

16. Install the cover plate as shown in [Figure 24](#) until it is flush against the axle face.
17. Install the spacer, slide the broom onto the bracket, and install the washer ([Figure 24](#)).
18. Install the lynch pin ([Figure 22](#)).
19. Repeat steps 8 through 18 for the other side of the broom.
20. Install the hood using 2 bolts (1/4 x 3/4 inch) on the rear of the broom ([Figure 23](#)) and the 2 bolts on each side of the broom ([Figure 22](#)). Torque the bolts to 11 N·m (100 in-lb).

## Checking the Hydraulic Fluid Level

**Service Interval:** Before each use or daily

Refer to the *Operator's Manual* for the machine and the *Installation Instructions* for the High Flow Hydraulics Kit.

## Storage

1. Park the machine on a level surface, disengage the PTO, engage the parking brake, and move the motion-control levers outward to the NEUTRAL-LOCK position.
2. Raise the A-frame and support it with a block or cylinder lock.
3. Shut off the engine and remove the key.
4. Lower the kickstands so that the bristles are not touching the ground; refer to [Using the Kickstands \(page 10\)](#).

**Note:** The bristles will become deformed and the broom will be out of alignment if the bristles are touching the ground for an extended period of time.

5. Remove the broom from the machine, if desired; refer to [Removing the Broom \(page 11\)](#).
6. Disconnect the hoses from the low-flow assembly and plug them together.
7. Disconnect the hoses from the high-flow assembly and plug them together.
8. Cover the couplers of the high-flow and low-flow assemblies using caps or a bag.
9. Oil the chain; refer to [Oiling the Chain \(page 12\)](#).
10. Thoroughly clean the broom and ensure that it is free of all caustic chemicals and/or residue.
11. Check and tighten all bolts, nuts, and screws. Repair or replace any part that is damaged or defective.
12. Paint all scratched or bare metal surfaces. Paint is available from your Authorized Service Dealer.
13. Store the broom in a clean, dry garage or storage area. Cover it to protect it and keep it clean.

# Troubleshooting

<b>Problem</b>	<b>Possible Cause</b>	<b>Corrective Action</b>
The broom does not clean the surface.	<ol style="list-style-type: none"><li>1. The broom height is incorrect.</li><li>2. The tire pressure in the drive tires is not correct.</li><li>3. You are cleaning too much debris at one time.</li></ol>	<ol style="list-style-type: none"><li>1. Adjust the broom height.</li><li>2. Adjust the tire pressure in the drive tires.</li><li>3. Slow down and clear smaller areas of debris.</li></ol>
The broom does not rotate.	<ol style="list-style-type: none"><li>1. The broom is clogged.</li><li>2. The broom drive lever is not engaged.</li><li>3. The broom drive belt is slipping.</li><li>4. The belt is broken.</li><li>5. The drive chain is loose.</li></ol>	<ol style="list-style-type: none"><li>1. Unclog the broom.</li><li>2. Engage the broom drive lever.</li><li>3. Adjust or replace the belt.</li><li>4. Replace the belt.</li><li>5. Adjust the motor chain tension.</li></ol>
The broom wears out prematurely.	<ol style="list-style-type: none"><li>1. You are using the incorrect broom height.</li></ol>	<ol style="list-style-type: none"><li>1. Adjust the broom height.</li></ol>



**Notes:**

**Notes:**

**Notes:**



# The Toro Warranty

A Limited Warranty (see warranty periods below)

Landscape Contractor Equipment (LCE)  
Riding Product

## Conditions and Products Covered

The Toro Company and its affiliate, Toro Warranty Company, pursuant to an agreement between them, jointly promise to repair the Toro Products listed below if defective in materials or workmanship.

The following time periods apply from the original date of purchase:

Products	Warranty Period
GrandStand® Mowers	5 years or 1,200 hours <sup>2</sup>
• Engines <sup>3</sup>	3 years
Z Master® 3000 Series Mowers	5 years or 1,200 hours <sup>2</sup>
• Engines <sup>3</sup>	3 years
Z Master® 5000 Series Mowers	5 years or 1,200 hours <sup>2</sup>
• Engines <sup>3</sup>	3 years
Z Master® 6000 Series Mowers	5 years or 1,400 hours <sup>2</sup>
• Engines <sup>3</sup>	3 years
Z Master®7000 Series Mowers	4 years or 1,200 hours <sup>2</sup>
• Engines <sup>3</sup>	2 years
Z Master®8000 Series Mowers	2 years
• Engines <sup>3</sup>	3 years
TITAN HD 1500 Series	4 years or 500 Hours <sup>2</sup>
• Engines	Toro – 4 years or 500 hours
TITAN HD 2000 Series	4 years or 750 Hours <sup>2</sup>
• Engines <sup>3</sup>	Kohler – 3 years
TITAN HD 2500 Series	4 years or 1000 Hours <sup>2</sup>
• Engines <sup>3</sup>	Kawasaki – 3 years
<b>All Mowers</b>	
• Battery	90 days Parts and Labor 1 year Parts only
• Belts and Tires	90 days
• Attachments	1 year

<sup>1</sup>Residential use means use of the product on the same lot as your home. Use at more than one location is considered commercial use and the commercial warranty would apply.

<sup>2</sup>Whichever occurs first.

<sup>3</sup>Some engines used on Toro Products are warranted by the engine manufacturer.

## Owner Responsibilities

You must maintain your Toro Product by following the maintenance procedures described in the *Operator's Manual*. Such routine maintenance, whether performed by a dealer or by you, is at your expense.

## Instructions for Obtaining Warranty Service

If you think that your Toro Product contains a defect in materials or workmanship, follow this procedure:

- Contact any Authorized Toro Service Dealer to arrange service at their dealership. To locate a dealer convenient to you, access our web site at [www.Toro.com](http://www.Toro.com). You may also call the numbers listed in item #3 to use the 24-hour Toro Dealer locator system.
- Bring the product and your proof of purchase (sales receipt) to the Service Dealer. The dealer will diagnose the problem and determine if it is covered under warranty.

## Countries Other than the United States or Canada

Customers who have purchased Toro products outside the United States or Canada should contact their Toro Distributor (Dealer) to obtain guarantee policies for your country, province, or state. If for any reason you are dissatisfied with your Distributor's service or have difficulty obtaining guarantee information, contact the Toro importer. If all other remedies fail, you may contact us at Toro Warranty Company.

**Australian Consumer Law:** Australian customers will find details relating to the Australian Consumer Law either inside the box or at your local Toro Dealer.

- If for any reason you are dissatisfied with the Service Dealer's analysis or with the assistance provided, contact us at:

Toro Warranty Company  
Customer Care Department, RLC Division  
8111 Lyndale Avenue South  
Bloomington, MN 55420-1196  
888-865-5676 (U.S. Customers)  
888-865-5691 (Canada customers)

## Items and Conditions Not Covered

There is no other express warranty except for special emission system coverage and engine warranty coverage on some products. This express warranty does not cover the following:

- Cost of regular maintenance service or parts, such as filters, fuel, lubricants, oil changes, spark plugs, air filters, blade sharpening or worn blades, cable/linkage adjustments, or brake and clutch adjustments
- Components failing due to normal wear
- Any product or part which has been altered, misused, neglected, or requires replacement or repair due to accidents or lack of proper maintenance
- Pickup and delivery charges
- Repairs or attempted repairs by anyone other than an Authorized Toro Service Dealer
- Repairs necessary due to failure to follow recommended fuel procedure (consult *Operator's Manual* for more details)
  - Removing contaminants from the fuel system is not covered
  - Use of old fuel (more than one month old) or fuel which contains more than 10% ethanol or more than 15% MTBE
  - Failure to drain the fuel system prior to any period of non-use over one month

## General Conditions

All repairs covered by these warranties must be performed by an Authorized Toro Service Dealer using Toro approved replacement parts.

**Neither The Toro Company nor Toro Warranty Company is liable for indirect, incidental or consequential damages in connection with the use of the Toro Products covered by this warranty, including any cost or expense of providing substitute equipment or service during reasonable periods of malfunction or non-use pending completion of repairs under this warranty.**

**All implied warranties of merchantability (that the product is fit for ordinary use) and fitness for use (that the product is fit for a particular purpose) are limited to the duration of the express warranty.**

**Some states do not allow exclusions of incidental or consequential damages, or limitations on how long an implied warranty lasts, so the above exclusions and limitations may not apply to you.**

This warranty gives you specific legal rights, and you may also have other rights which vary from state to state.