



Count on it.

Parts Catalog

24in Stand-On Aerator

Model No. 39514—Serial No. 409036653 and Up



Ordering Replacement Parts

To order replacement parts, please supply the part number, the quantity, and the description of each part desired.

Understanding Reference Numbers

Each identified part in an illustration has a reference number. The reference number for a part also appears in the parts list, along with other information about the part.

This catalog uses two special reference number formats, one to indicate parts in a service assembly and another to indicate the quantity of a given part in an illustration.

Service Assembly Reference Numbers

Parts in service assemblies have reference numbers in the form a:b. The a represents the reference number of the entire service assembly and the b represents a sequential number unique to each part within the service assembly.

For example, a wheel assembly might be identified by reference number 6, the tire by 6:1, the valve by 6:2, and the wheel by 6:3. When you order the assembly identified by reference number 6, you receive all parts identified by reference numbers 6:1, 6:2, and 6:3. However, you may also order any part individually. Reference numbers of this type appear in illustration and in parts lists.

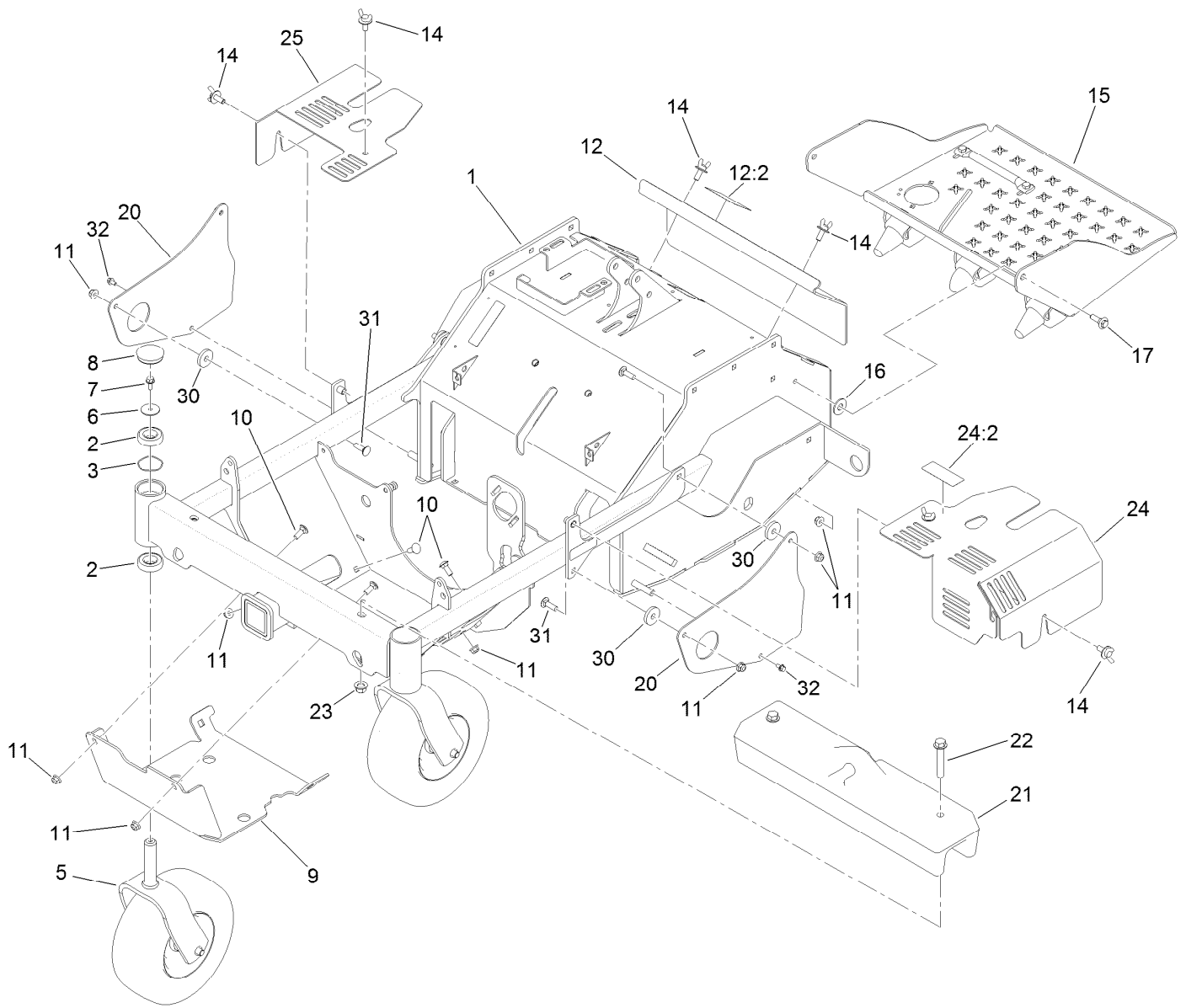
Reference Numbers Indicating Quantity

In an illustration, if a reference number indicates more than one part, the reference number has the form nX y. The n represents the quantity of the part, the X is the multiplication symbol, and the y represents the reference number.

For example, in an illustration, the reference number 2X 37 means that two of the parts identified by reference number 37 are indicated.

Contents

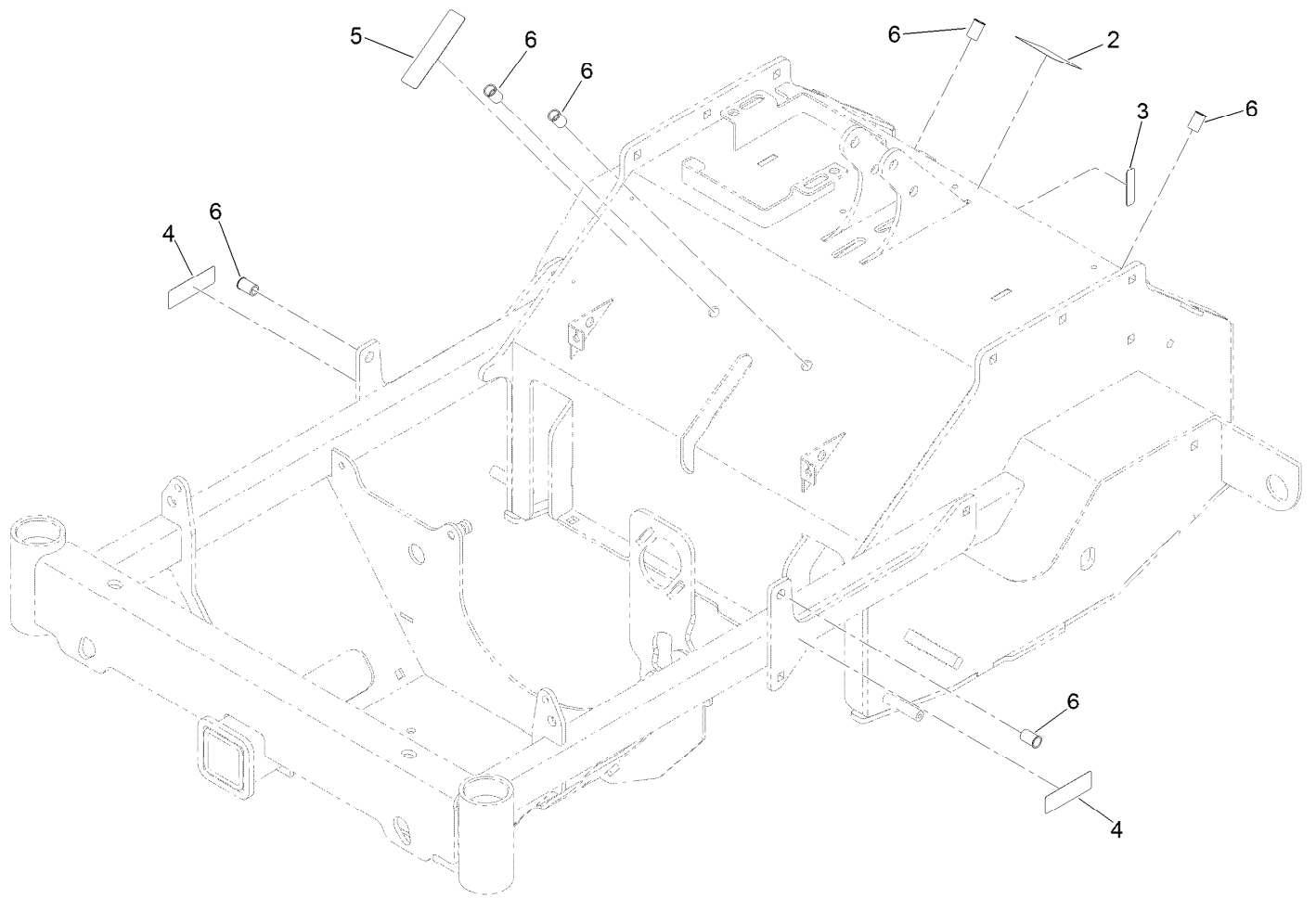
Frame Assembly.....	4
Main Frame Assembly No. 135-5236.....	5
Caster Wheel Assembly.....	6
Platform Assembly No. 126-9883.....	8
Control Tower and Brake Assembly.....	9
Control Tower Assembly No. 135-1701.....	10
Ground Drive Assembly.....	12
LH Transaxle Assembly No. 126-9064.....	14
RH Transaxle Assembly No. 126-9065.....	15
Wheel and Tire Assembly.....	16
Idler Arm Assembly No. 126-9116.....	18
Tine Assembly.....	19
Left Hand Tine Wheel Assembly No. 126-9550.....	20
Right Hand Tine Wheel Assembly No. 126-9551.....	21
Motion Controls.....	22
LH Motion Control Linkage Assembly.....	24
RH Motion Control Linkage Assembly.....	26
Electrical Assembly.....	28
Wire Harness Assembly No. 126-9535.....	30
Auxiliary Hydraulic Assembly.....	32
Manifold Assembly No. 126-9321.....	34
Engine Assembly.....	36



Frame Assembly

Ref.	Part Number	Qty.	Description	Ref.	Part Number	Qty.	Description
1	135-5236	1	Main Frame ASM	15	126-9883	1	Platform ASM
2	109-3678	4	Bearing-Ball	16	3256-6	2	Washer-Flat
3	126-5897	2	Spring	17	614672	2	Screw-Shoulder, HWH
5		2	Front Caster ASM ●	20	135-5138-01	2	Guard-Chain
6	3256-68	2	Washer-Flat	21	135-2017	1	Weight-Front
7	3234-5	2	Screw-HHF	22	3234-40	2	Screw-HF
8	116-4348	2	Cap-Grease	23	99-5107	2	Nut-Lock
9	126-8726-03	1	Guard-Engine	24	135-3270	1	Hydro-Cover
10	3231-2	4	Bolt-CARR	24:2	135-3183	1	Decal-Release, Drive
11	104-8301	10	Nut-HF, NI	25	135-0822-03	1	Cover-Hydro
12	126-8801	1	Access Cover ASM	30	1-543610	4	Washer-Clutch
12:2	121-6163	1	Decal-Operation, Tine Ground (CE)	31	3231-25	4	Bolt-CARR
14	135-4629	6	Screw-Sems (3/8-16 X 1)	32	3234-13	2	Screw-HHF

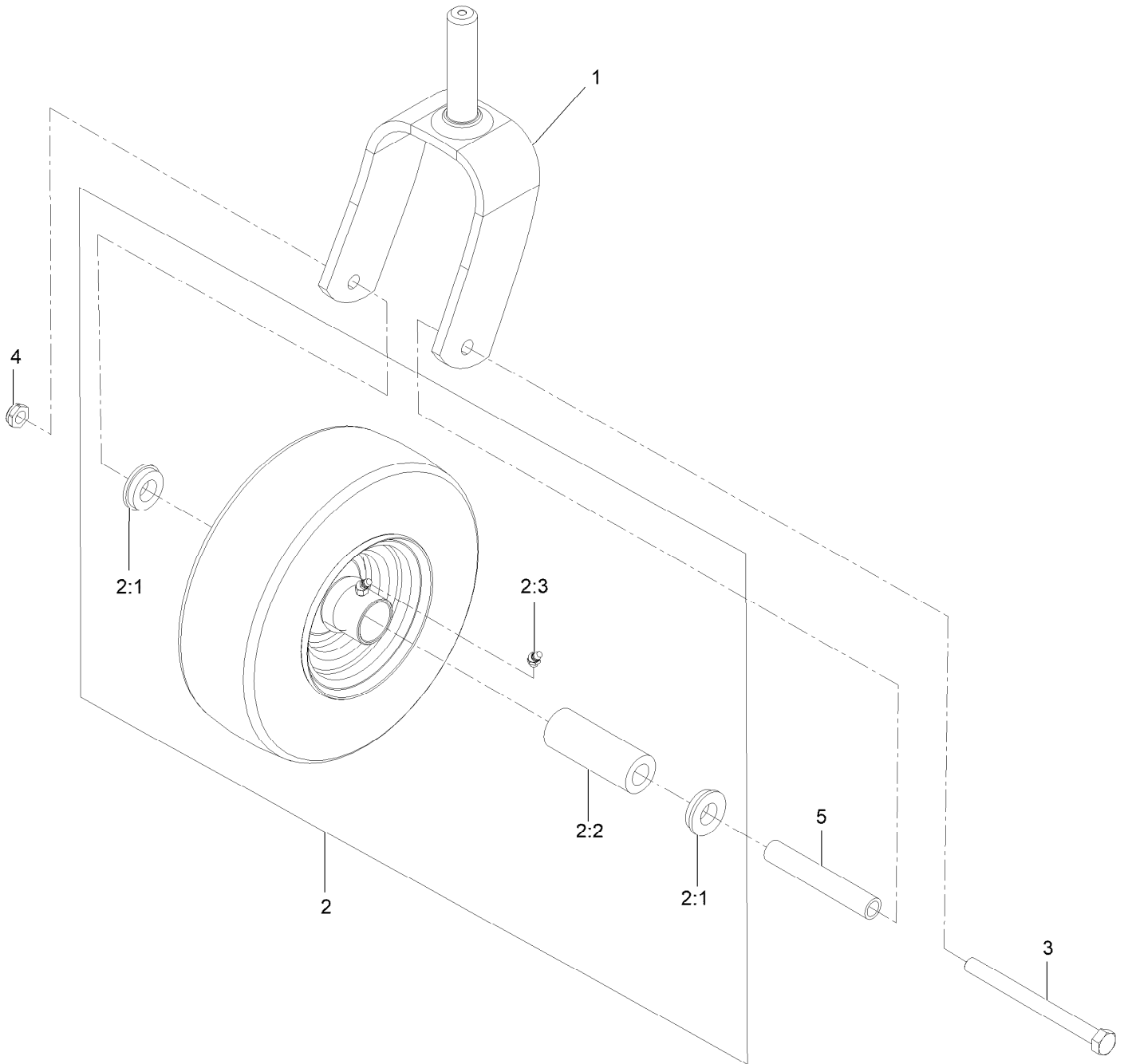
● Not serviced separately



Main Frame Assembly No. 135-5236

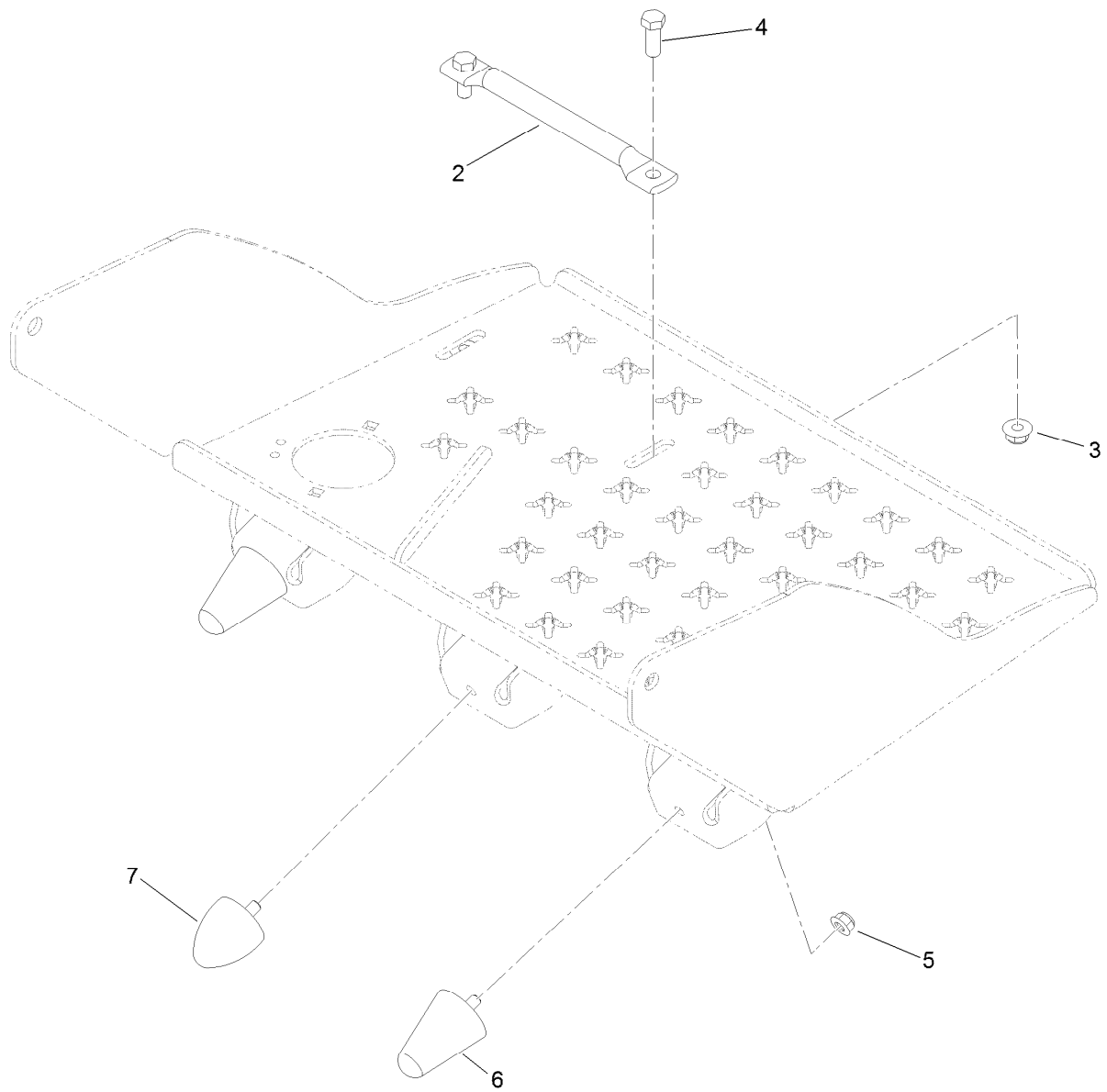
<i>Ref.</i>	<i>Part Number</i>	<i>Qty.</i>	<i>Description</i>
2	121-6150	1	Decal-Warning
3	120-9570	1	Decal-Warning
4	121-6161	2	Decal-Danger
5	133-8062	1	Decal-Arrestor, Spark
6	32148-10	6	Nut-Clinch

Caster Wheel Assembly



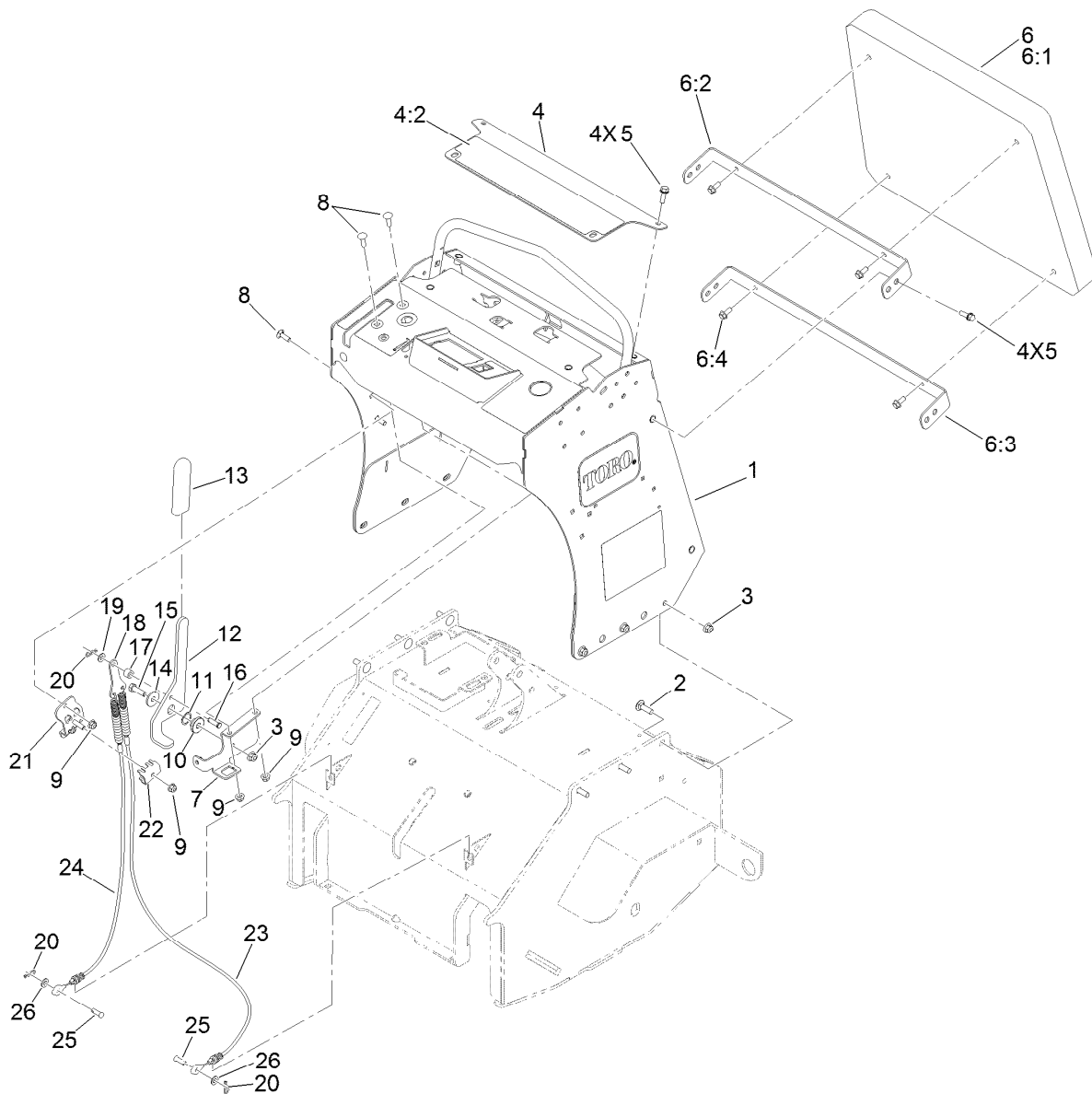
Caster Wheel Assembly (continued)

<i>Ref.</i>	<i>Part Number</i>	<i>Qty.</i>	<i>Description</i>	<i>Ref.</i>	<i>Part Number</i>	<i>Qty.</i>	<i>Description</i>
1	135-1354-01	1	Fork-Caster	2:3	302-61	1	Fitting-Grease
2	142-4434	1	Wheel And Tire ASM	3	325-20	1	Screw-HH 1/2-13 X 6
2:1	1-513810	2	Bushing	4	3296-45	1	Nut-Nyloc 1/2-13 Thin
2:2	1-513809	1	Bearing	5	1-513547	1	Spacer



Platform Assembly No. 126-9883

<i>Ref.</i>	<i>Part Number</i>	<i>Qty.</i>	<i>Description</i>
2	116-8950-01	1	Rocker-Pedal, Foot
3	104-8301	2	Nut-HF, NI
4	323-6	2	Screw-HH
5	104-8300	3	Nut-HF, NI
6	114-1925	2	Bumper-Rubber
7	114-1926	1	Bumper-Rubber

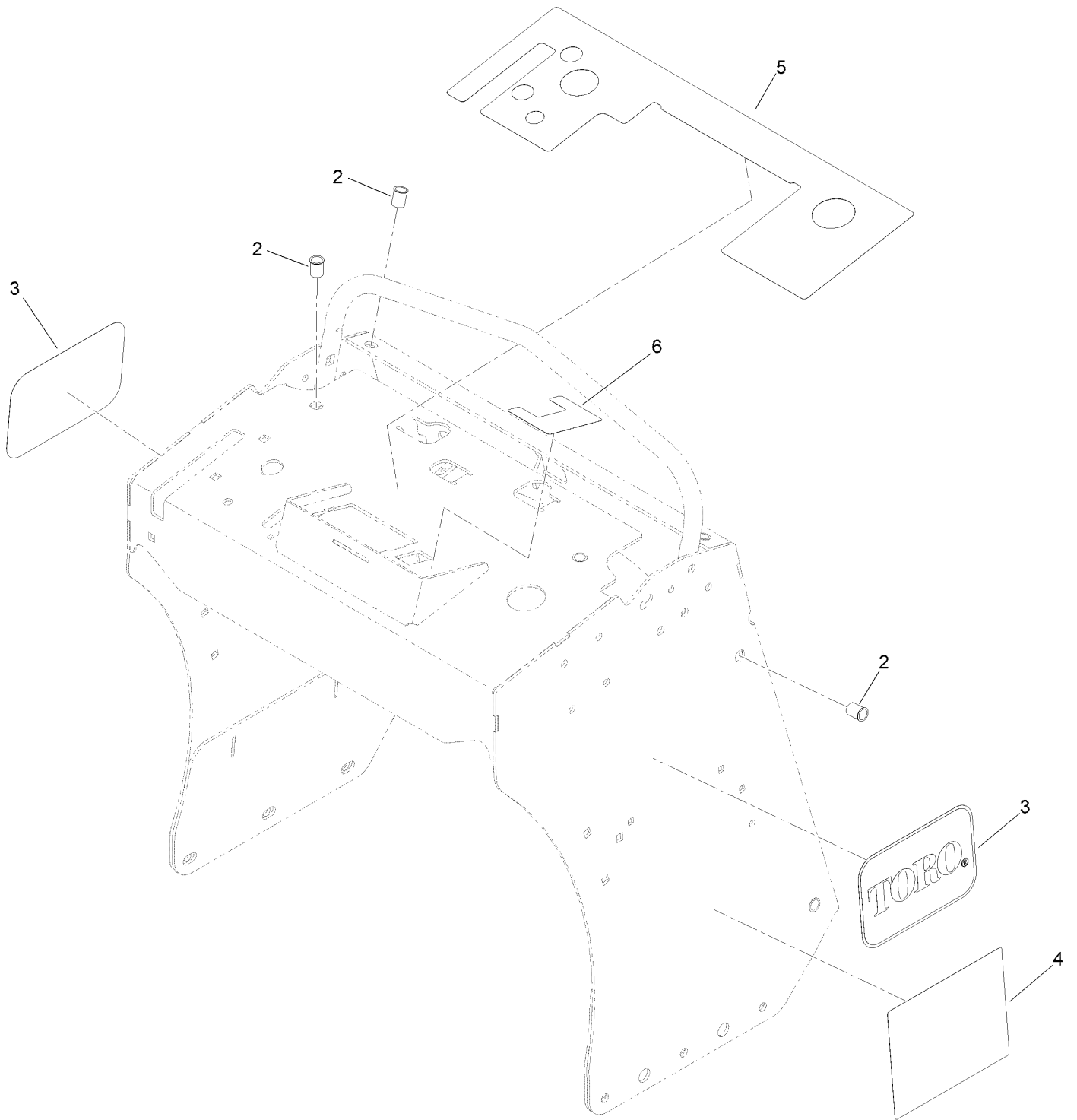


Control Tower and Brake Assembly

Ref.	Part Number	Qty.	Description	Ref.	Part Number	Qty.	Description
1	135-1701	1	Control Tower ASM	12	135-1715	1	Handle-Brake
2	3231-25	6	Bolt-CARR	13	1-633268	1	Grip-Lever
3	104-8301	7	Nut-HF, NI	14	2844	1	Washer
4	135-1696	1	Control Panel ASM	15	323-7	1	Screw-HH
4:2	135-2014	1	Decal-Warning	16	283-61	1	Pin-Yoke
5	3234-29	8	Screw-HHF	17	114-8549	1	Bushing
6		1	Cushion ASM ●	18	132-1188	1	Yoke-Cable
6:1	135-1694	1	Cushion-Black	19	93-6079	1	Spacer-Nylon
6:2	135-1712-03	1	Bracket-Pad, Upper	20	3290-307	3	Pin-Cotter
6:3	135-1713-03	1	Bracket-Pad, Lower	21	132-7582	1	Mount-Cable, Brake
6:4	98-9940	4	Screw-HHF	22	132-1187	1	Clamp-Cable
7	135-1714-03	1	Bracket-Pivot, Brake	23	135-0081	1	Cable-Brake, LH
8	3230-22	5	Screw-CARR	24	135-0082	1	Cable-Brake, RH
9	104-8300	6	Nut-HF, NI	25	283-75	2	Pin-Clevis
10	126-5989	1	Pivot-Flange	26	3256-23	2	Washer-Plain
11	119-4164	1	Washer-Wave				

● Not serviced separately

Control Tower Assembly No. 135-1701

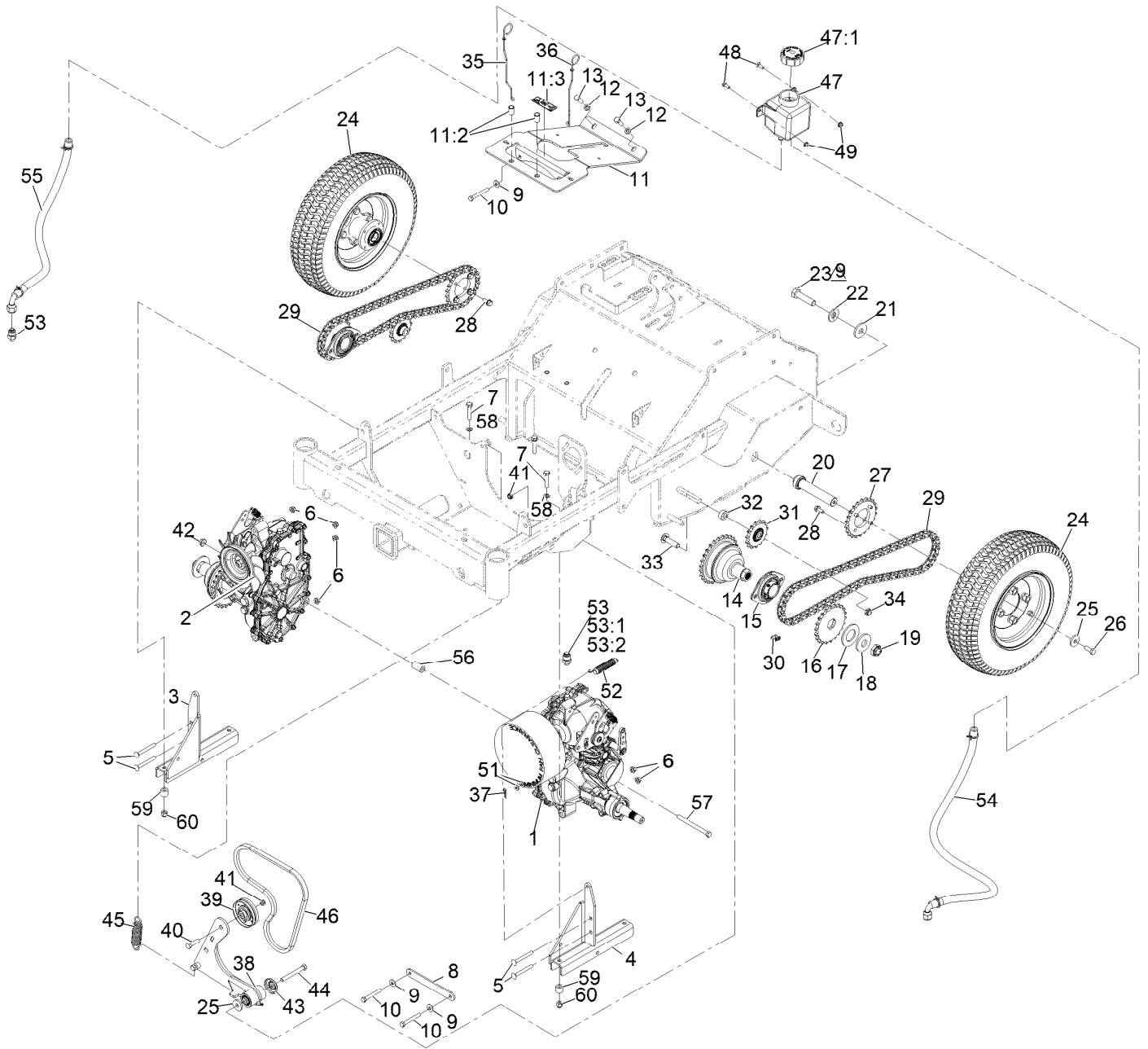


Control Tower Assembly No. 135-1701 (continued)

<i>Ref.</i>	<i>Part Number</i>	<i>Qty.</i>	<i>Description</i>
2	32148-7	8	Nut-Clinch
3	62-5550	2	Decal
4	135-3685	1	Decal-Aid, Service

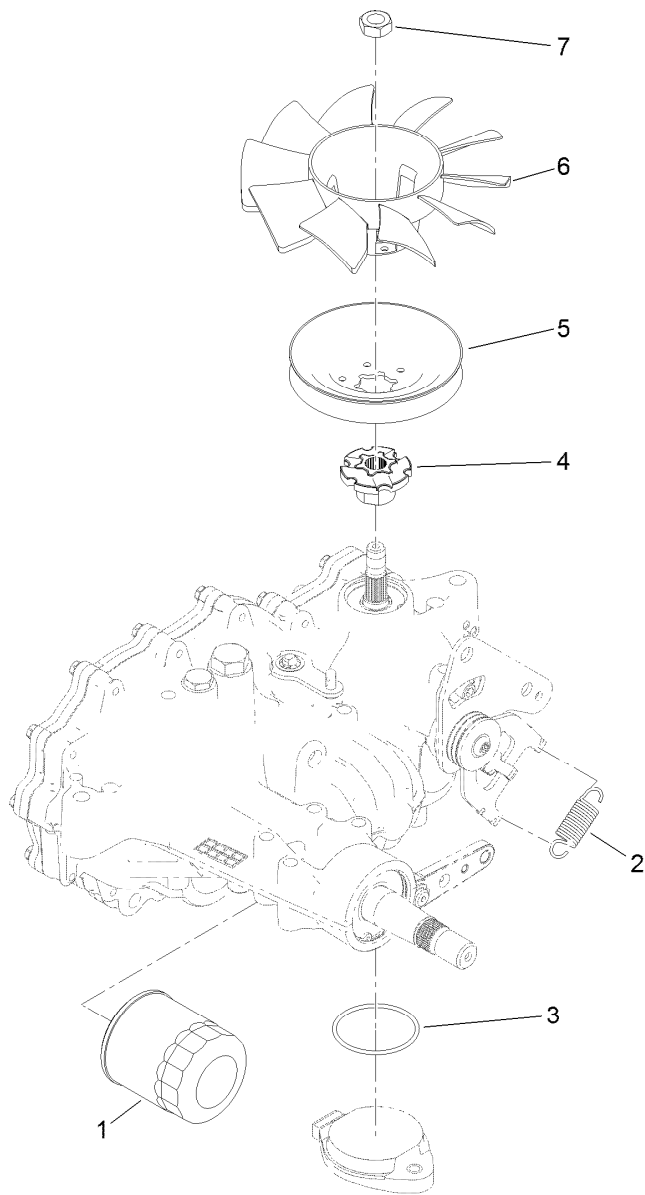
<i>Ref.</i>	<i>Part Number</i>	<i>Qty.</i>	<i>Description</i>
5	135-2013	1	Decal-Panel, Control
6	135-2016	1	Decal-Control, Tine

Ground Drive Assembly



Ground Drive Assembly (continued)

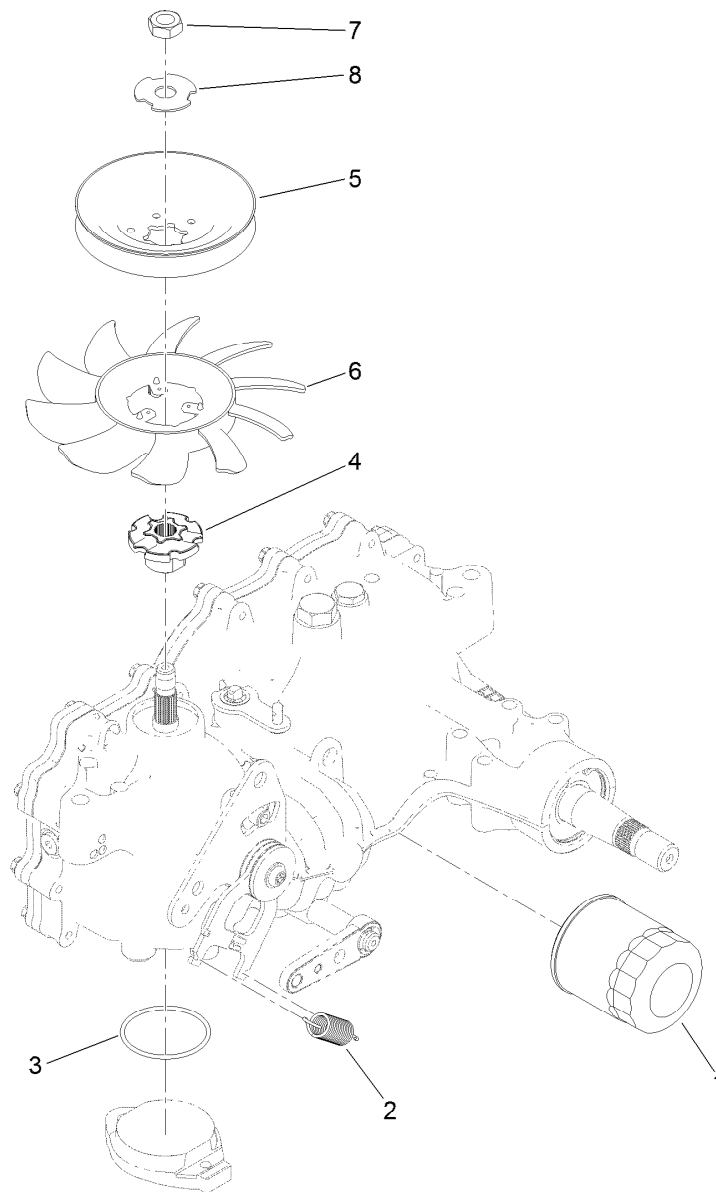
<i>Ref.</i>	<i>Part Number</i>	<i>Qty.</i>	<i>Description</i>	<i>Ref.</i>	<i>Part Number</i>	<i>Qty.</i>	<i>Description</i>
1	126-9064	1	Hydro-Zt3100, LH	31	126-9108	2	Sprocket-Idler, 15T
2	126-9065	1	Hydro-Zt3100, RH	32	126-9498	2	Spacer
3	135-2004-03	1	Mount-Hydro, RH	33	3233-4	2	Screw-CARR
4	135-2006-03	1	Mount-Hydro, LH	34	3296-45	2	Nut-Nyloc 1/2-13 Thin
5	3230-9	4	Bolt-Carriage 5/16-18 X 2 3/4	35	135-0683	1	Rod-Bypass, LH
6	104-8300	8	Nut-Nyloc 5/16-18 Flg	36	135-0685	1	Rod-Bypass, RH
7	323-52	4	Screw-HH 3/8-16 X 1 3/4	37	3290-307	2	Pin-Cotter
8	126-9092-03	1	Crossmember-Transmission	38	126-9116	1	Idler Arm ASM
9	1-303334	4	Washer-Spring Disc 5/16	39	116-9715	1	Pulley-Idler
10	132-3838	4	Screw-HH	40	323-29	1	Screw-HH 3/8-16 X 1 3/8
11	135-2497	1	Support-Cover	41	3296-59	2	Nut-Nyloc 3/8-16 Thin
11:2	32148-10	2	Nut-Clinch	42	104-8301	1	Nut-Nyloc 3/8-16 Flg
11:3	121-6161	1	Decal-Danger	43	103-2916	1	Guard-Top
12	3253-21	2	Washer-Lock 3/8	44	323-20	1	Screw-HH 3/8-16 X 3-1/4
13	323-6	2	Screw-HH 3/8-16 X 1	45	1-603402	1	Spring-Extension
14	135-0537	2	Hub-Bell	46	126-9834	1	Belt-V, Cogged
15	135-1056	2	Bearing-Flanged	47	109-2250	1	Tank-HYD
16	135-0347	2	Sprocket	47:1	109-3320	1	Cap-Reservoir, HYD
17	135-0360	2	Washer-Spacer	48	3229-1	2	Bolt-Carriage 1/4-20 X 3/4
18	26-1990	2	Washer-Belleville	49	104-7201	2	Nut-Nyloc 1/4-20 Flg
19	116-2839	2	Nut-Lock	51	119-8952	4	Washer
20	135-1895	2	Axle-Wheel, Drive	52	109-7124	2	Spring-Extension
21	135-1894	2	Washer-Spacer	53	135-3138	2	Fitting-Straight
22	125-1736	2	Washer-Belleville	53:1	237-78	1	O-Ring
23	327-7	2	Screw-HH	53:2	1-603992	1	O-Ring-37 Flare #8
24	142-4438	2	Wheel And Tire ASM	54	135-0061	1	Hose ASM
25	53-6380	3	Washer-Flat	55	135-0062	1	Hose ASM
26	3235-22	2	Screw-HH, Lock	56	135-0124	1	Spacer
27	126-9075	2	Sprocket	57	323-23	1	Screw-HH 3/8-16 X 4-1/2
28	98-9940	8	Screw-HHF	58	106-5592	4	Spacer-Brake, Parking
29	135-1100	2	Chain-Roller	59	98-8895	4	Spacer
30	116-6897	2	Link-Connecting	60	112-0236	4	Nut-Lock



LH Transaxle Assembly No. 126-9064

<i>Ref.</i>	<i>Part Number</i>	<i>Qty.</i>	<i>Description</i>
1	109-3321	1	Element-Oil Filter, HYD
2	135-3931	1	Spring-Extension
3	109-3540	1	O Ring-Seal
4	116-9705	1	Hub-Pulley
5	116-9707	1	Pulley
6	126-0291	1	Fan-7.0 Inch (10 Blade)
7	116-9714	1	Nut-HJ
99	135-3604	1	Brake Shaft Seal Kit ●

● Not illustrated

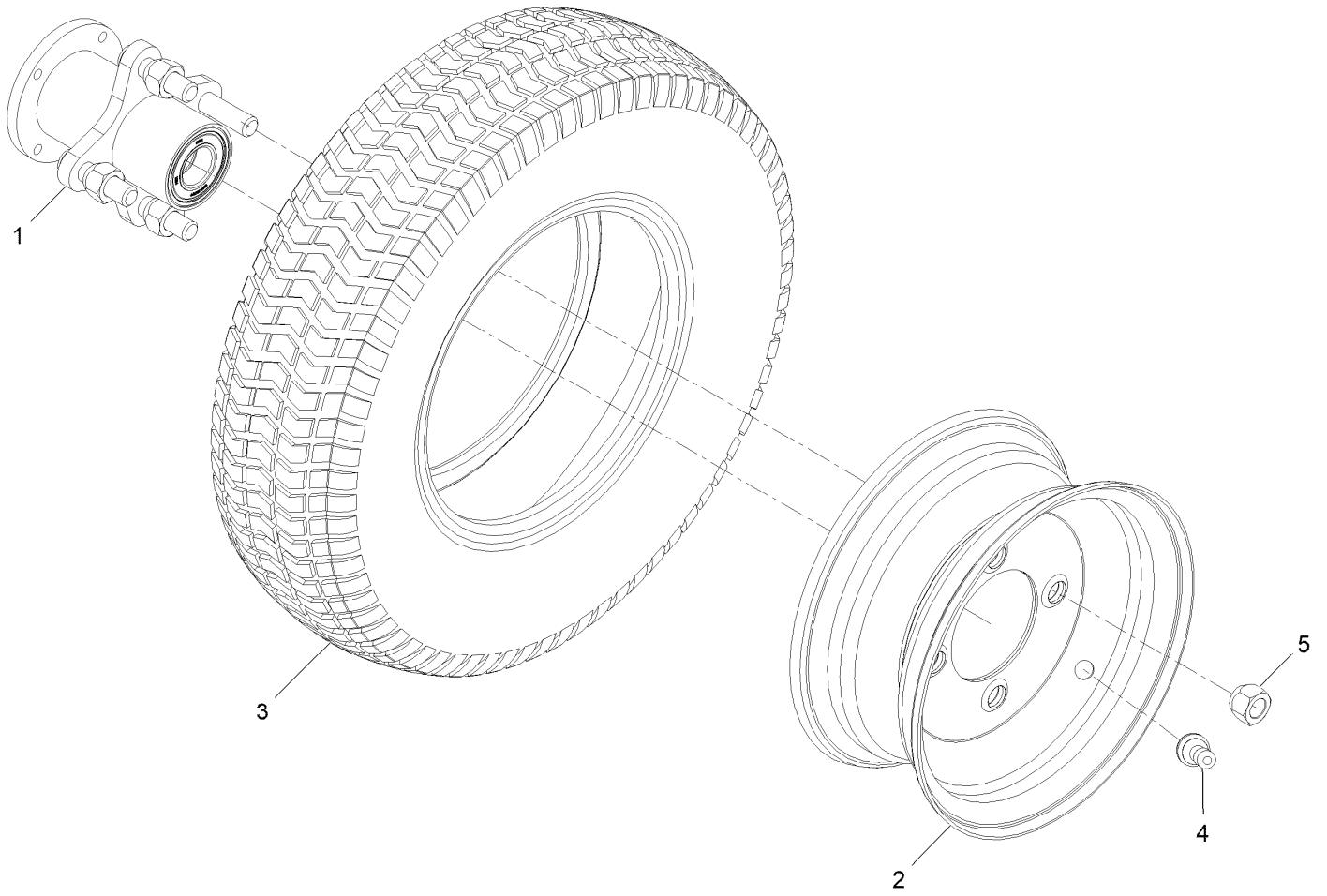


RH Transaxle Assembly No. 126-9065

<i>Ref.</i>	<i>Part Number</i>	<i>Qty.</i>	<i>Description</i>
1	109-3321	1	Element-Oil Filter, HYD
2	135-3931	1	Spring-Extension
3	109-3540	1	O Ring-Seal
4	116-9705	1	Hub-Pulley
5	116-9707	1	Pulley
6	116-9706	1	Fan
7	116-9714	1	Nut-HJ
8	116-9708	1	Washer-Slotted
99	135-3604	1	Brake Shaft Seal Kit ●

● Not illustrated

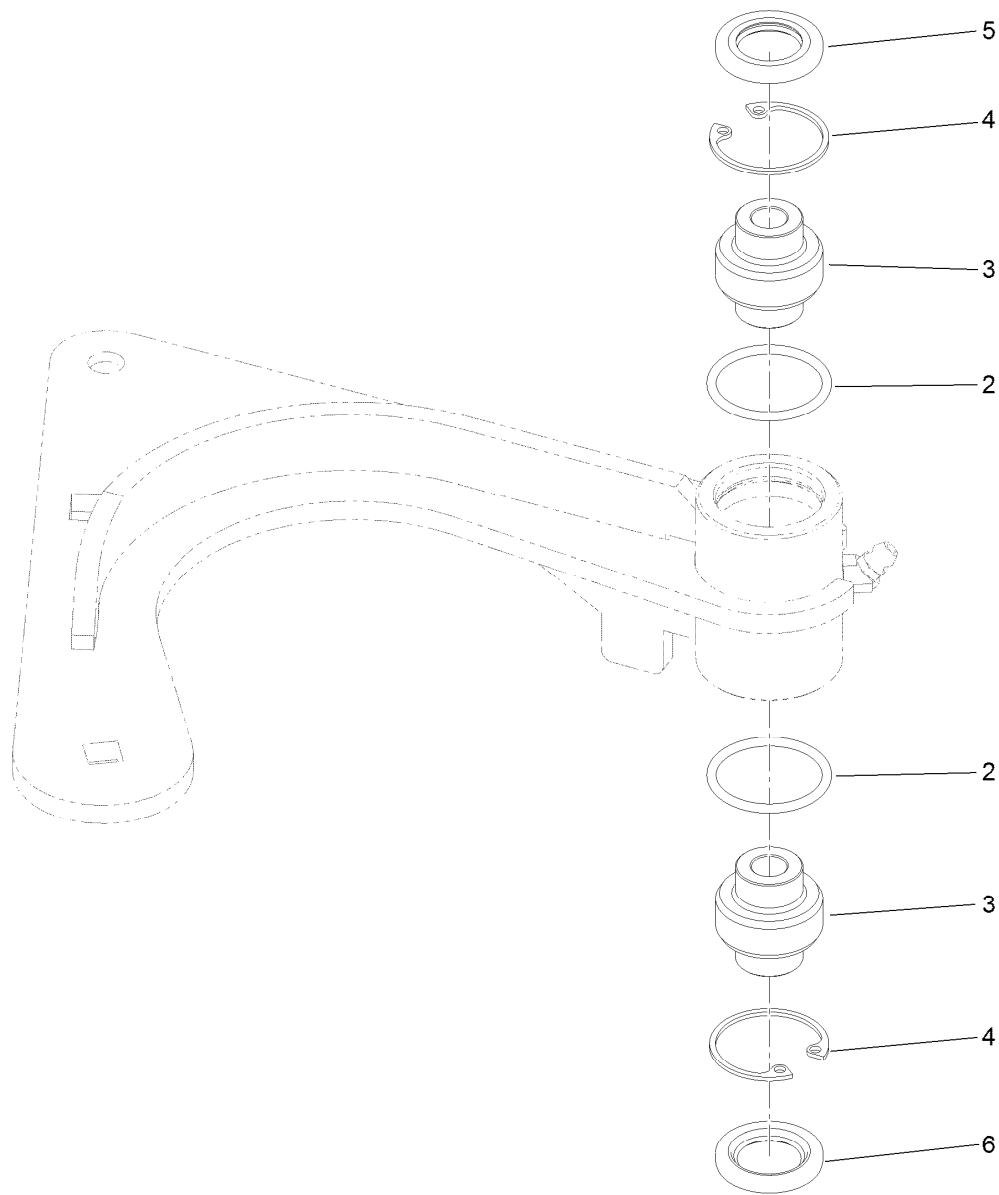
Wheel and Tire Assembly



Wheel and Tire Assembly (continued)

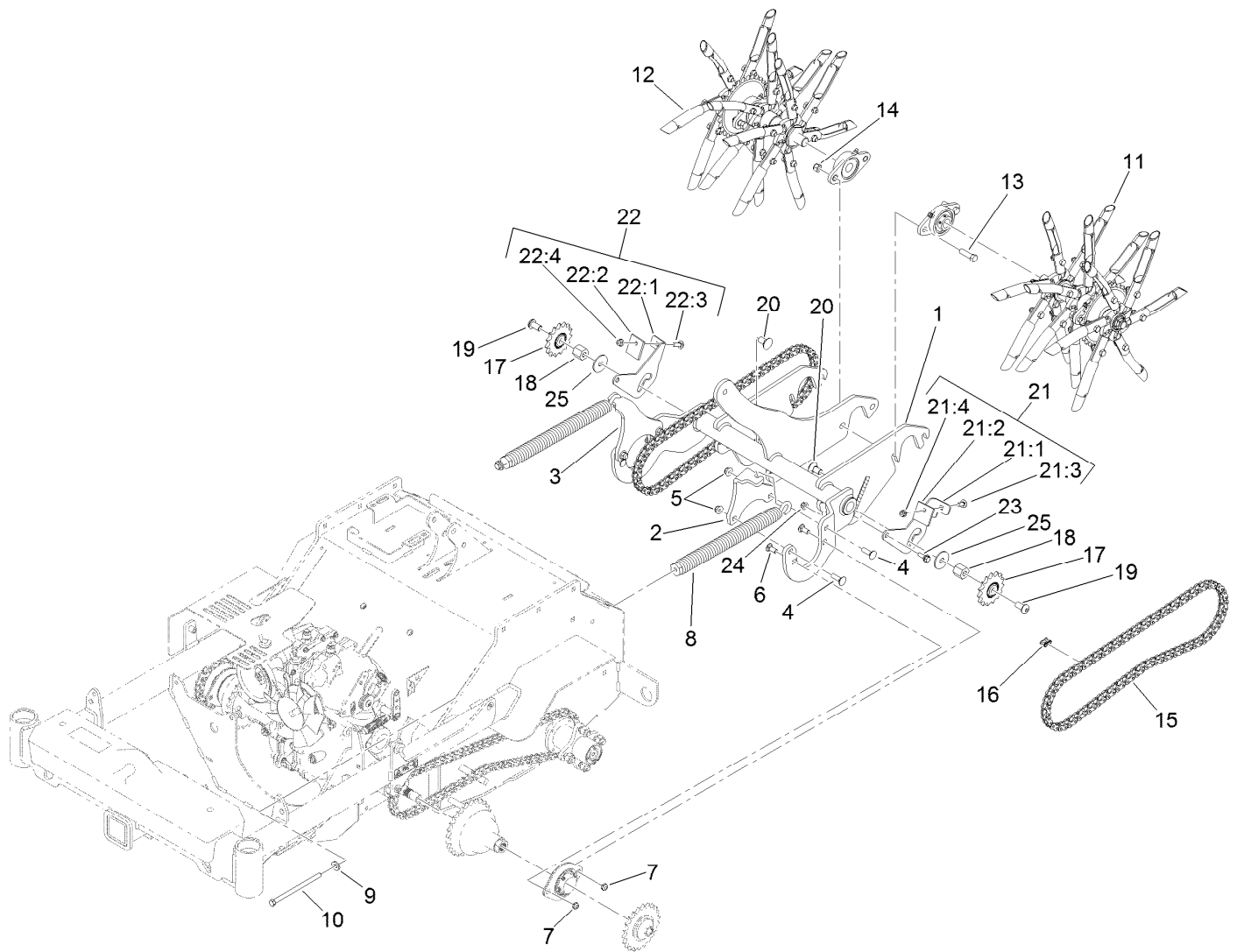
<i>Ref.</i>	<i>Part Number</i>	<i>Qty.</i>	<i>Description</i>	<i>Ref.</i>	<i>Part Number</i>	<i>Qty.</i>	<i>Description</i>
1		1	Wheel Hub ASM ●	4	232-27	1	Stem-Valve
2		1	Rim ●	5	242-50	4	Nut-Lug
3		1	Tire ●				

● Not serviced separately



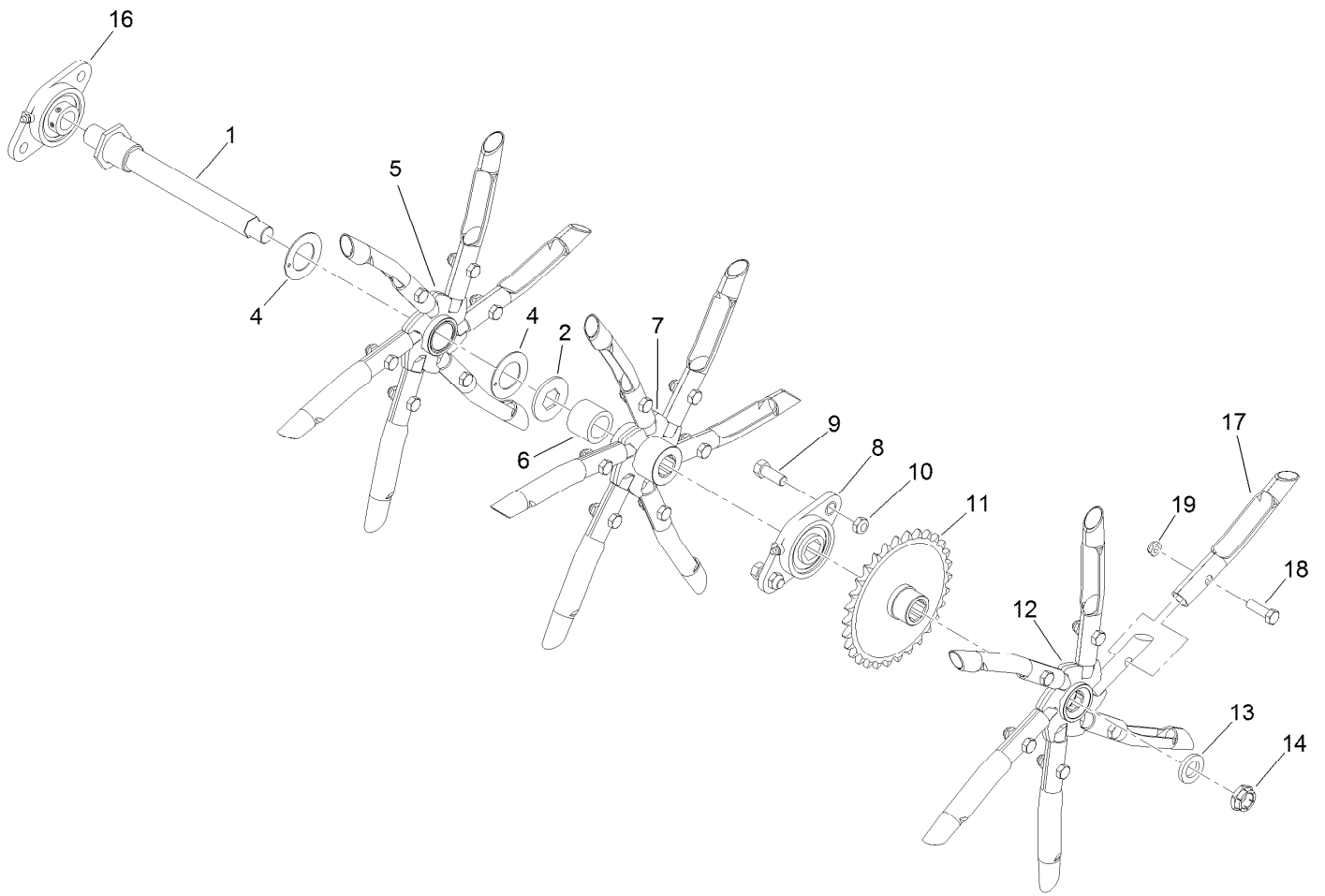
Idler Arm Assembly No. 126-9116

<i>Ref.</i>	<i>Part Number</i>	<i>Qty.</i>	<i>Description</i>
2	106-7159	2	O-Ring
3	103-3504	2	Bearing-Spherical
4	32120-10	2	Ring-Snap
5	103-3505	1	Seal-Lip, Double
6	103-3506	1	Seal-Lip, Single



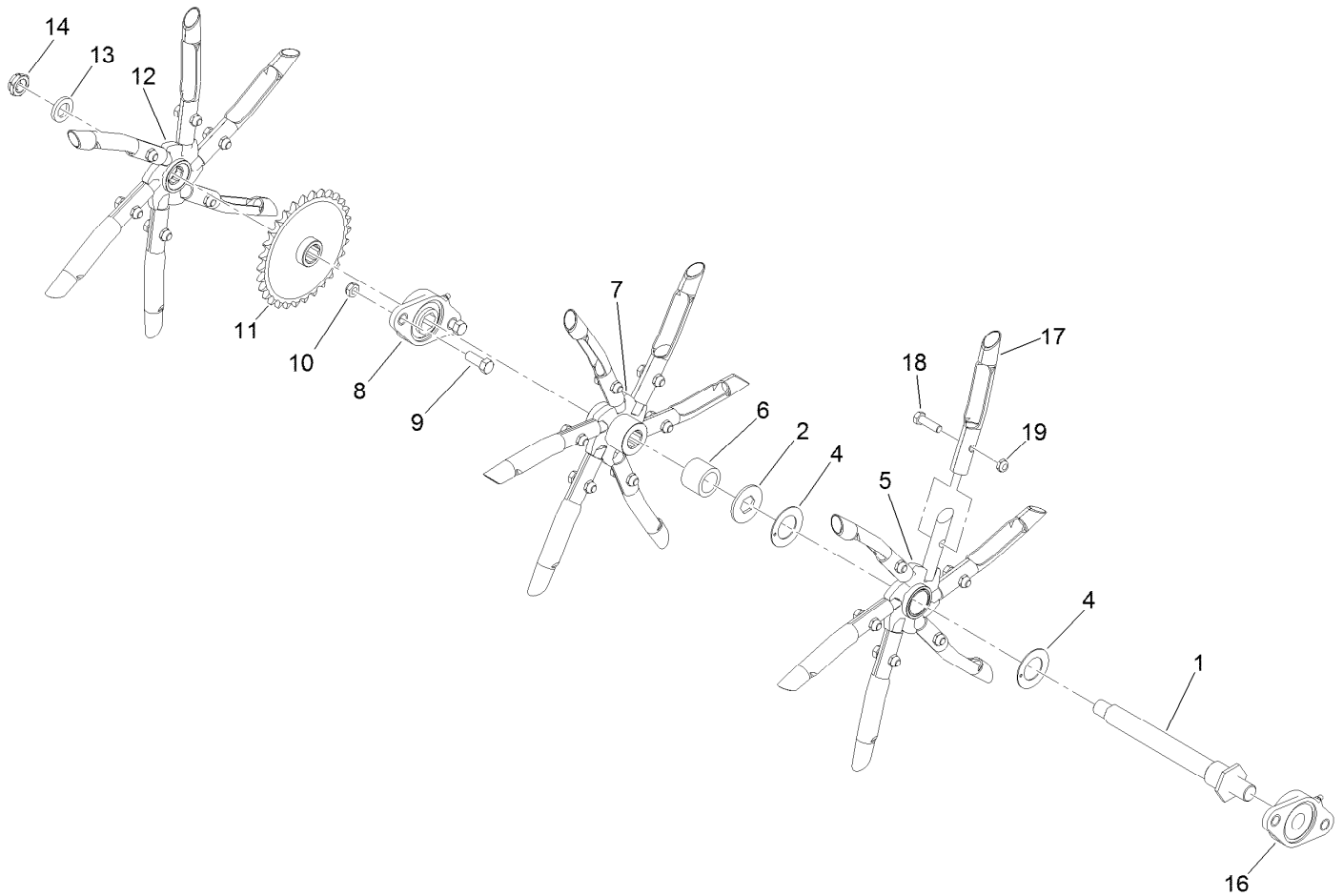
Tine Assembly

Ref.	Part Number	Qty.	Description	Ref.	Part Number	Qty.	Description
1	135-0810-03	1	Lift-Tine	19	99-8446	2	Screw- Pan Socket Head
2	135-1060-03	1	Arm-Spring, LH	20	3233-9	2	Screw-CARR
3	135-1061-03	1	Arm-Spring, RH	21	135-2405	1	LH Debris Deflector ASM
4	3231-25	4	Bolt-CARR	21:1	135-2325	1	Bracket-Deflector, Debris (LH)
5	104-8301	4	Nut-HF, NI	21:2	135-2403	1	Deflector-Debris
6	3231-12	4	Bolt-CARR	21:3	3230-10	1	Bolt-CARR
7	3296-59	4	Nut-Lock, NI	21:4	104-8300	1	Nut-HF, NI
8	116-0000	2	Spring-Extension	22	135-2404	1	RH Debris Deflector ASM
9	98-5975	2	Washer-Belleville	22:1	135-2406	1	Bracket-Deflector, Debris (RH)
10	323-58	2	Bolt-TAP, HH	22:2	135-2403	1	Deflector-Debris
11	126-9550	1	LH Tine Wheel ASM	22:3	3230-10	1	Bolt-CARR
12	126-9551	1	RH Tine Wheel ASM	22:4	104-8300	1	Nut-HF, NI
13	324-6	2	Screw-HH	23	27-0410	2	Screw-Shoulder
14	126-9780	2	Nut-Lock	24	104-8300	2	Nut-HF, NI
15	135-1100	2	Chain-Roller	25	120-3856	2	Washer-Flat
16	116-6897	2	Link-Connecting				
17	126-9108	2	Sprocket-Idler, 15T				
18	135-2242	2	Spacer				



Left Hand Tine Wheel Assembly No. 126-9550

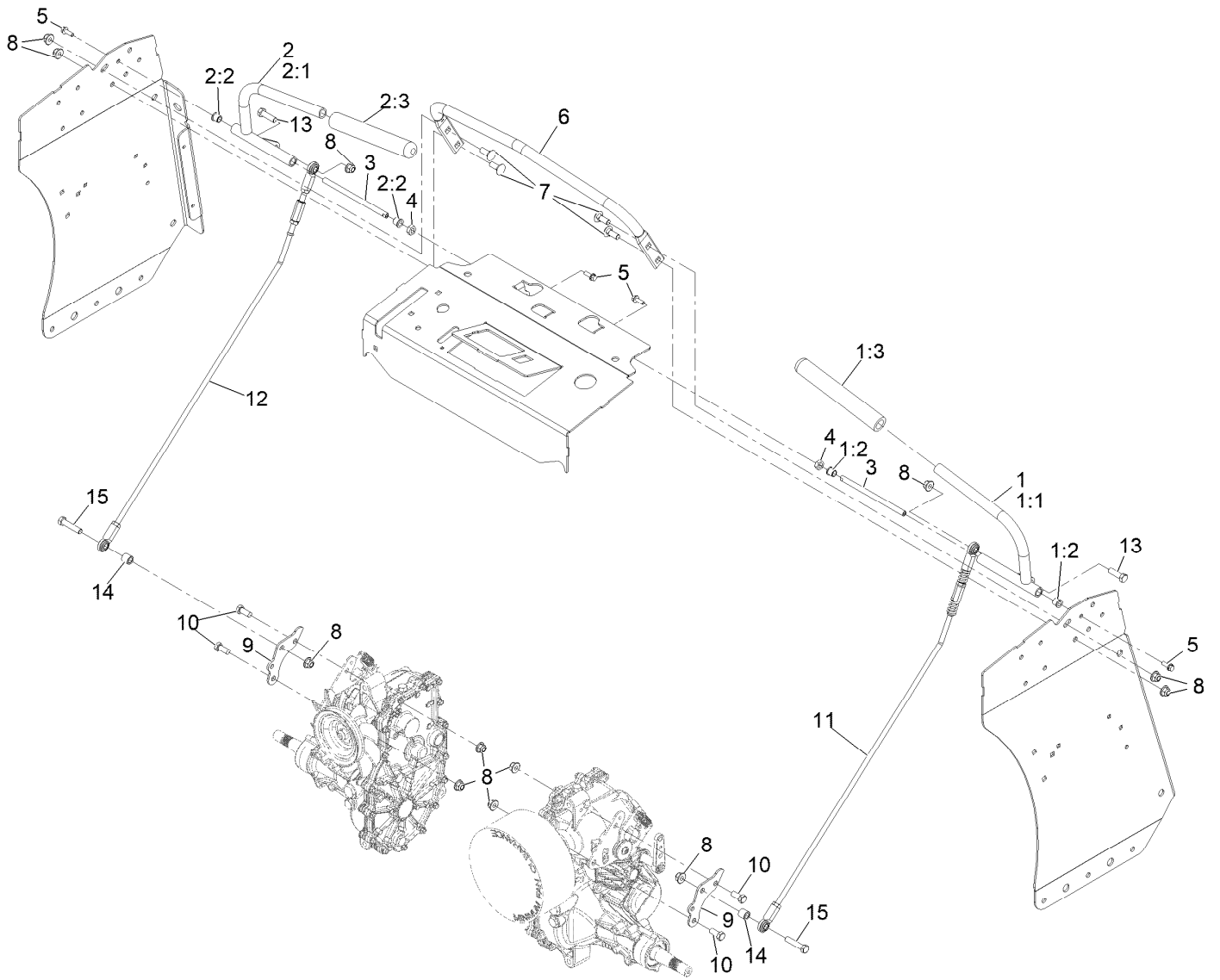
<i>Ref.</i>	<i>Part Number</i>	<i>Qty.</i>	<i>Description</i>	<i>Ref.</i>	<i>Part Number</i>	<i>Qty.</i>	<i>Description</i>
1	135-2980	1	Tine Shaft ASM	11	126-9624	1	Sprocket ASM
2	135-2977	1	Keeper-Tine, Floating	12	126-9630	1	Driven Spyder ASM
4	126-9619	2	Washer-Thrust	13	135-0502	1	Washer-Spacer
5	126-9540	1	Floating Spyder ASM	14	135-1528	1	Nut-Lock
6	126-9715	1	Spacer-Tine	16	126-9704	1	Bearing-Round Bore
7	126-9625	1	Driven Spyder ASM	17	126-2143	18	Tine-Coring (3/4 Inch)
8	126-9705	1	Bearing-Hex Bore	18	323-7	18	Screw-HH
9	126-9822	2	Screw-HH	19	3296-59	18	Nut-Lock, NI
10	126-9780	2	Nut-Lock				



Right Hand Tine Wheel Assembly No. 126-9551

<i>Ref.</i>	<i>Part Number</i>	<i>Qty.</i>	<i>Description</i>	<i>Ref.</i>	<i>Part Number</i>	<i>Qty.</i>	<i>Description</i>
1	135-2980	1	Tine Shaft ASM	11	126-9624	1	Sprocket ASM
2	135-2977	1	Keeper-Tine, Floating	12	126-9630	1	Driven Spyder ASM
4	126-9619	2	Washer-Thrust	13	135-0502	1	Washer-Spacer
5	126-9540	1	Floating Spyder ASM	14	135-1528	1	Nut-Lock
6	126-9715	1	Spacer-Tine	16	126-9704	1	Bearing-Round Bore
7	126-9625	1	Driven Spyder ASM	17	126-2143	1	Tine-Coring (3/4 Inch)
8	126-9705	1	Bearing-Hex Bore	18	323-7	18	Screw-HH
9	126-9822	2	Screw-HH	19	3296-59	18	Nut-Lock, NI
10	126-9780	2	Nut-Lock				

Motion Controls

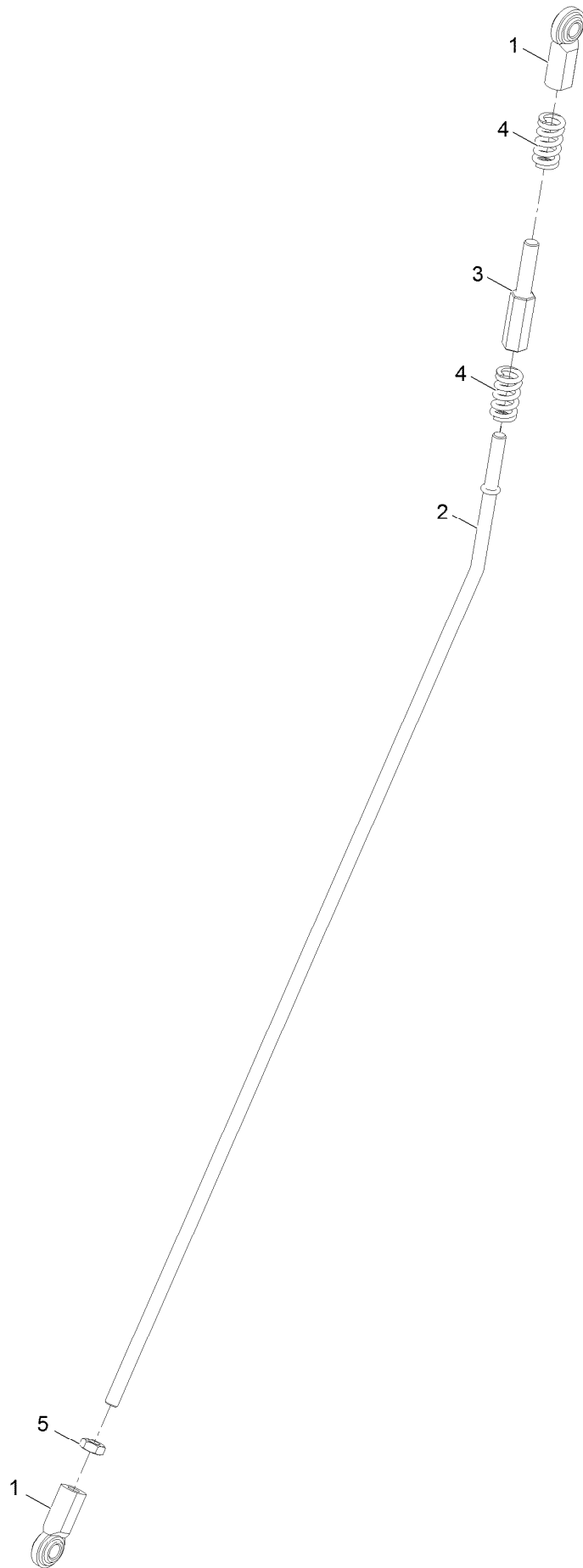


Motion Controls (continued)

<i>Ref.</i>	<i>Part Number</i>	<i>Qty.</i>	<i>Description</i>	<i>Ref.</i>	<i>Part Number</i>	<i>Qty.</i>	<i>Description</i>
1		1	LH Motion Handle ASM ●	6	135-1557-01	1	Bar-Reference
1:1	135-1575-03	1	Handle-Control, LH	7	3231-2	4	Bolt-Carriage 3/8-16 X 1
1:2	103-9928	2	Bearing	8	104-8301	12	Nut-Nyloc 3/8-16 Flg
1:3	103-8153	1	Grip-Lever, Control	9	135-0305	2	Arm-Motion
2		1	RH Motion Handle ASM ●	10	323-5	4	Screw-HH 3/8-16 X 7/8
2:1	135-1576-03	1	Handle-Control, RH	11		1	LH Motion Linkage ASM ●
2:2	103-9928	2	Bearing	12		1	RH Motion Linkage ASM ●
2:3	103-8153	1	Grip-Lever, Control	13	323-7	2	Screw-HH 3/8-16 X 1 1/4
3	116-4978	2	Shaft-Pivot, Motion Control	14	126-9682	2	Spacer
4	116-4198	2	Spacer-Shaft, Drive Lever	15	323-9	2	Screw-HH 3/8-16 X 1 3/4
5	117-8304	4	Screw-Hex Flange 1/4-20 X 3/4				

● Not serviced separately

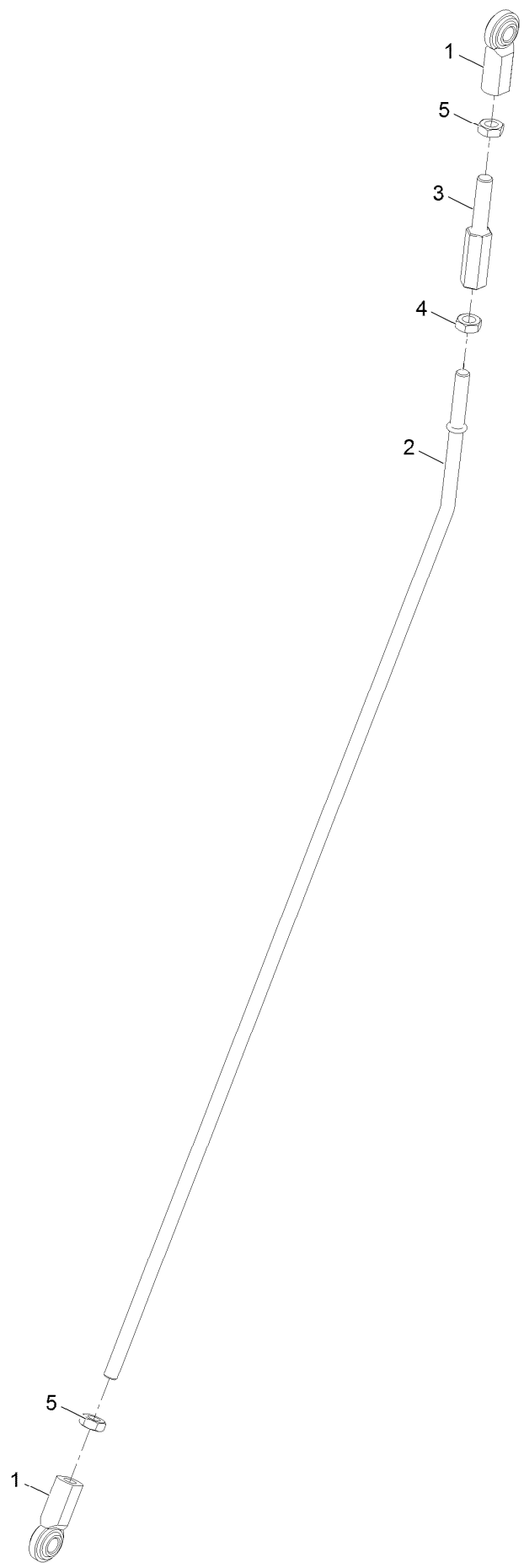
LH Motion Control Linkage Assembly



LH Motion Control Linkage Assembly (continued)

<i>Ref.</i>	<i>Part Number</i>	<i>Qty.</i>	<i>Description</i>	<i>Ref.</i>	<i>Part Number</i>	<i>Qty.</i>	<i>Description</i>
1	103-0608	2	Balljoint	4	116-7560	2	Spring-Compression
2	135-1579	1	Linkage-Motion	5	3220-3	1	Nut-Jam 3/8-24
3	116-4755	1	Rod-Adjustment				

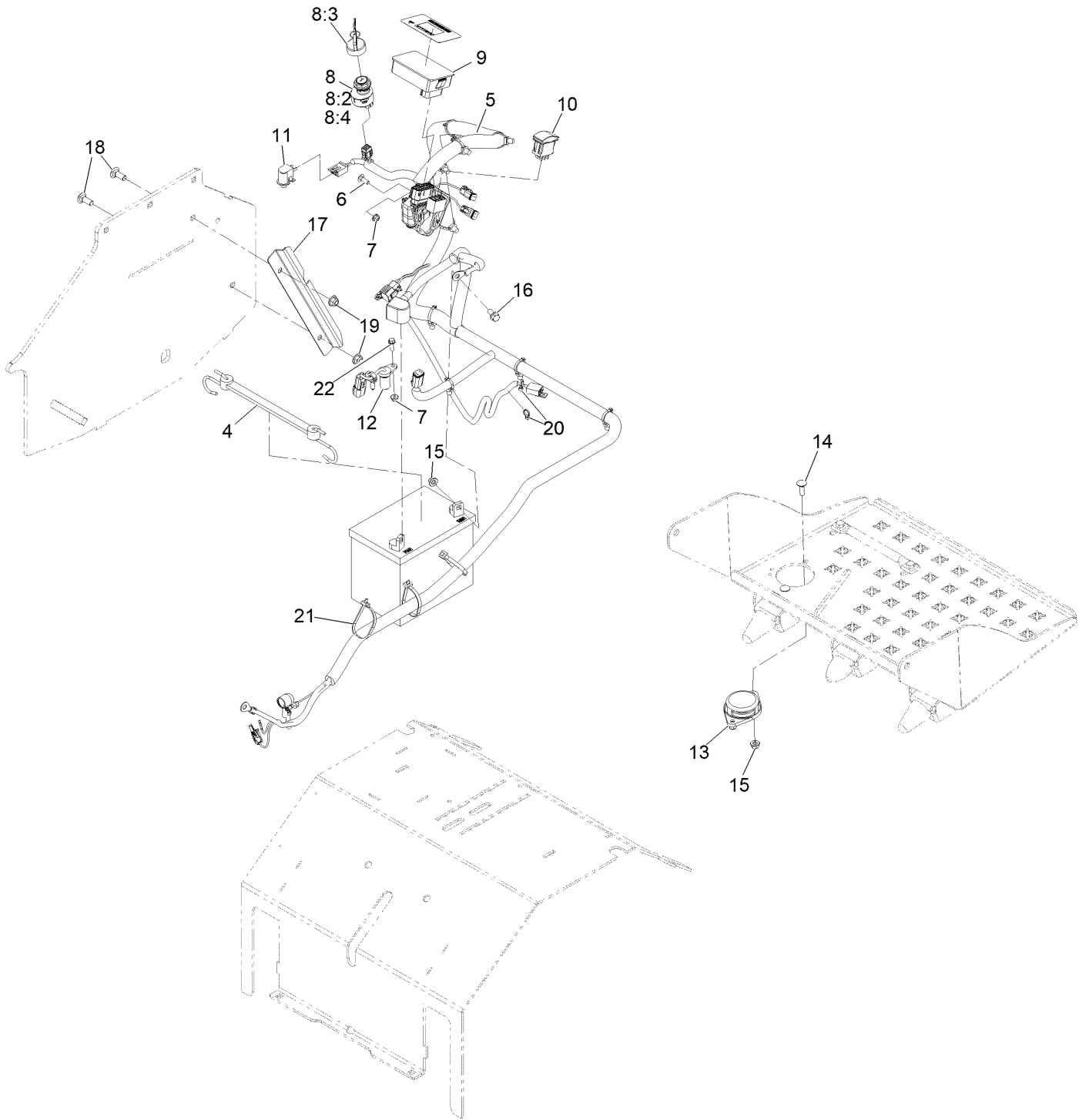
RH Motion Control Linkage Assembly



RH Motion Control Linkage Assembly (continued)

<i>Ref.</i>	<i>Part Number</i>	<i>Qty.</i>	<i>Description</i>	<i>Ref.</i>	<i>Part Number</i>	<i>Qty.</i>	<i>Description</i>
1	103-0608	2	Balljoint	4	3220-16	1	Nut-Jam 3/8-24 LH
2	135-1579	1	Linkage-Motion	5	3220-3	2	Nut-Jam 3/8-24
3	116-4755	1	Rod-Adjustment				

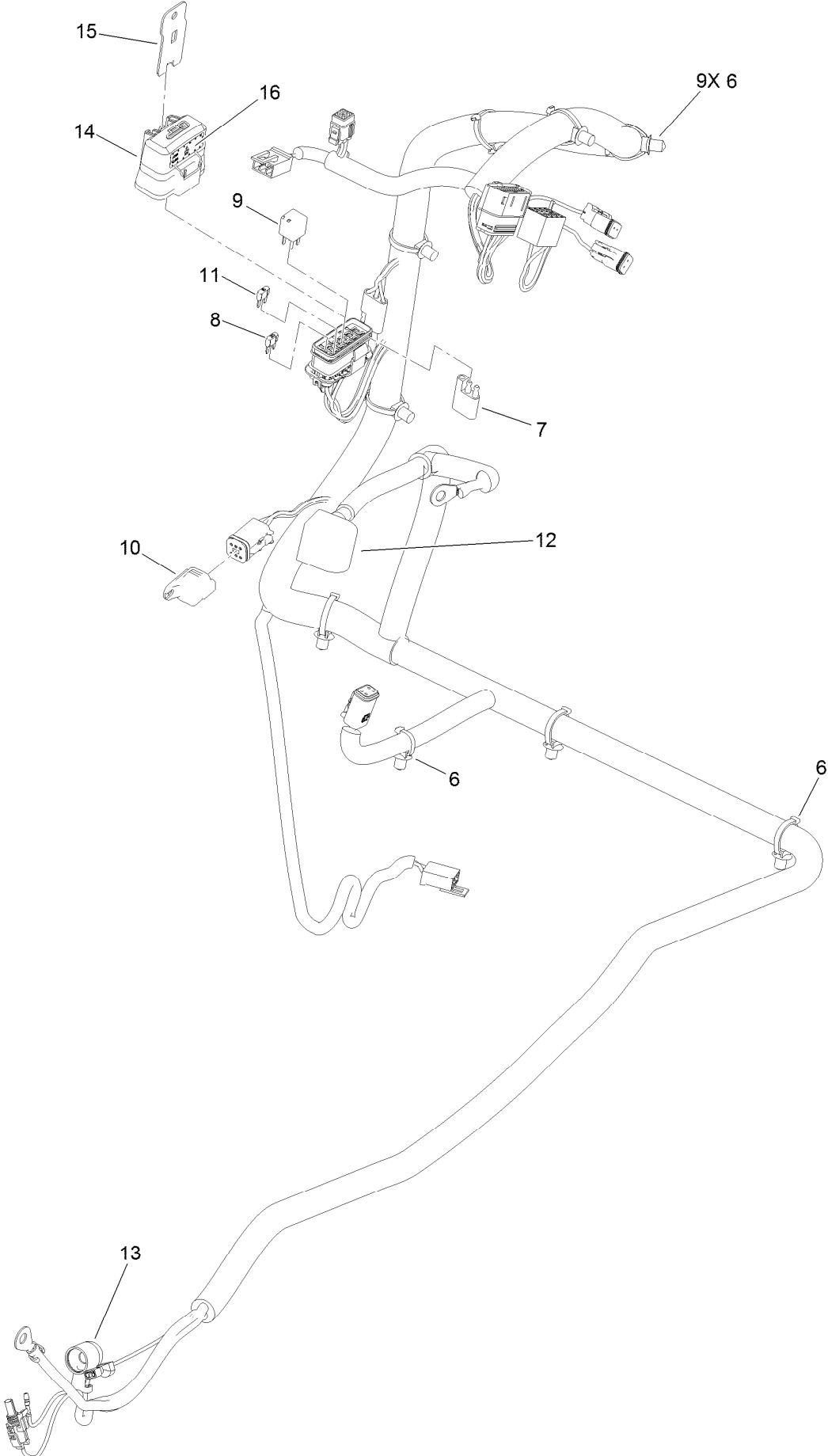
Electrical Assembly



Electrical Assembly (continued)

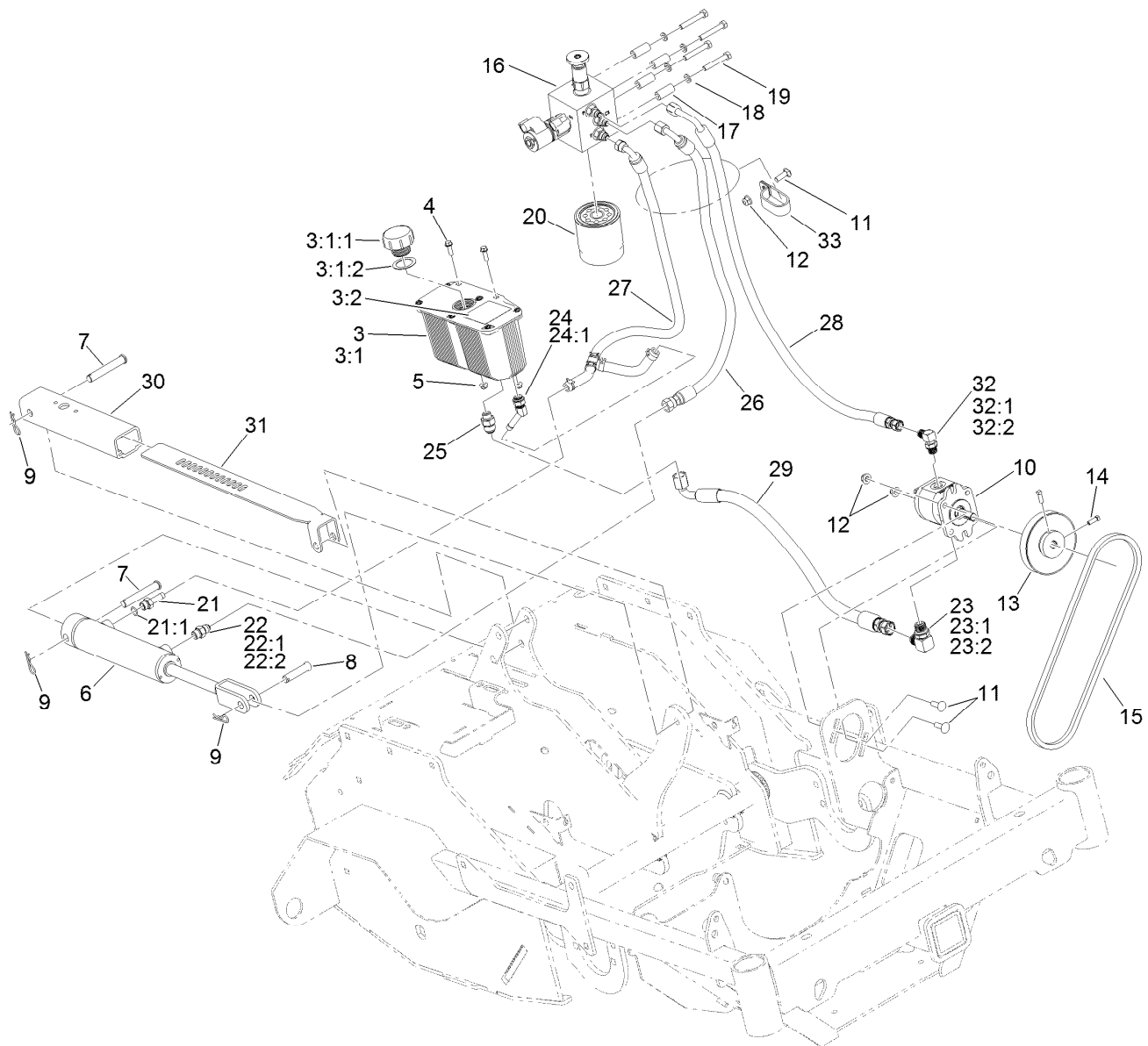
<i>Ref.</i>	<i>Part Number</i>	<i>Qty.</i>	<i>Description</i>	<i>Ref.</i>	<i>Part Number</i>	<i>Qty.</i>	<i>Description</i>
4	104-2466	1	Holddown-Battery	12	135-0101	1	Sensor-Quadrature
5	126-9535	1	Harness-Wire	13	92-6282	1	Switch-Seat
6	3229-1	1	Bolt-Carriage 1/4-20 X 3/4	14	3230-2	2	Bolt-Carriage 5/16-18 X 1
7	104-7201	2	Nut-Nyloc 1/4-20 Flg	15	104-8300	4	Nut-Nyloc 5/16-18 Flg
8	126-6285	1	Ignition Switch ASM	16	3234-5	2	Screw-HH Flg 5/16-18 X 3/4
8:2	108-8660	1	Nut-Mounting	17	126-9701-03	1	Guard-Harness
8:3	106-5270	1	Ignition Key Set	18	3231-2	2	Bolt-Carriage 3/8-16 X 1
8:4	108-8659	1	Washer-Backup	19	104-8301	2	Nut-Nyloc 3/8-16 Flg
9	135-2500	1	Hour Meter ASM	20	1-303287	2	Tie-Cable 5 1/2 (Small)
10	100-1535	1	Switch-Rocker, (On)-Off-(On)	21	3290-378	3	Tie-Cable
11	82-2190	1	Switch	22	32105-15	1	Screw-Machine 1/4-20 X 3/4

Wire Harness Assembly No. 126-9535



Wire Harness Assembly No. 126-9535 (continued)

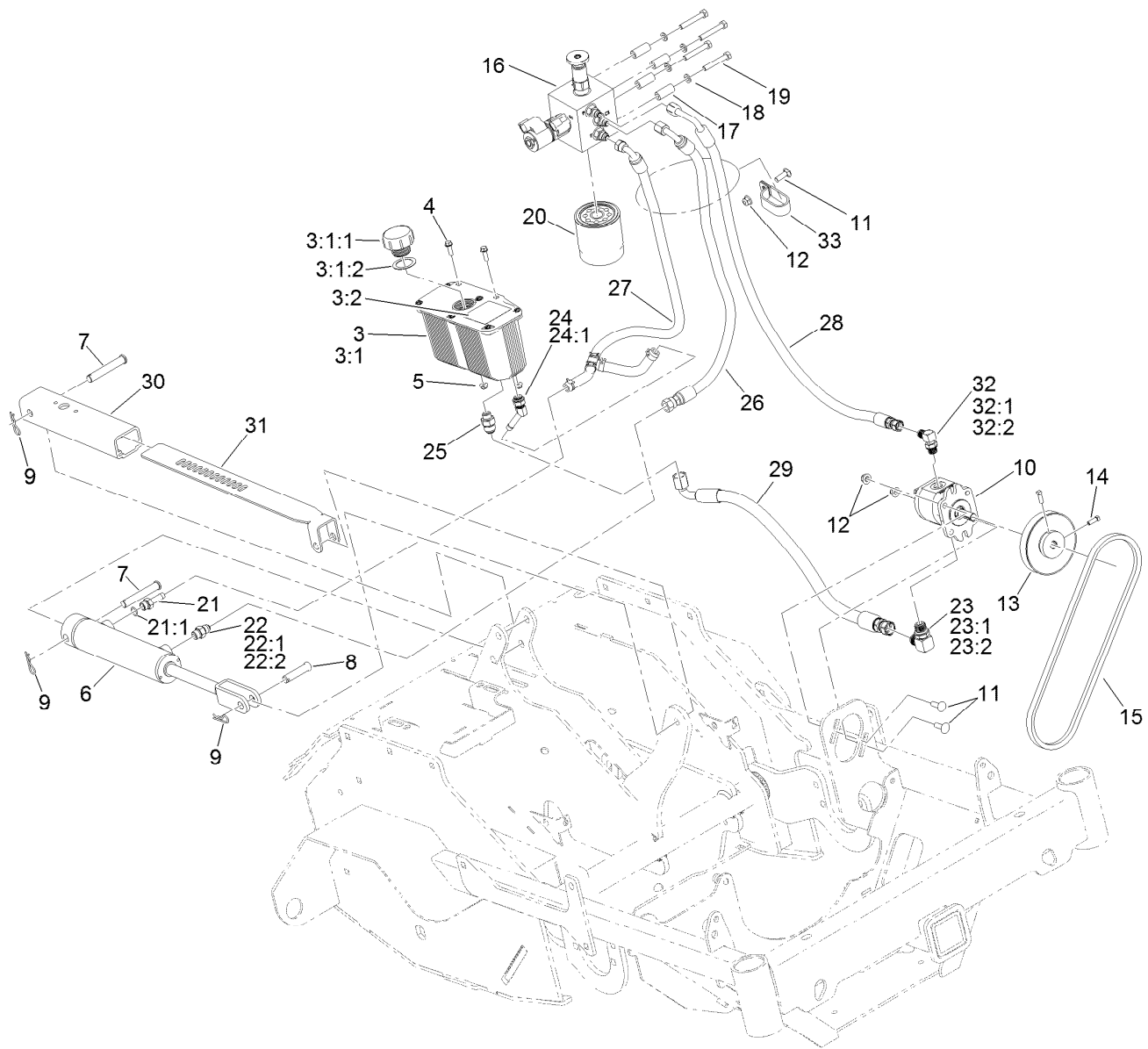
<i>Ref.</i>	<i>Part Number</i>	<i>Qty.</i>	<i>Description</i>	<i>Ref.</i>	<i>Part Number</i>	<i>Qty.</i>	<i>Description</i>
6	32180-030	9	Clip-Tie	12	126-8876	1	Insulator-Battery
7	32180-197	1	Cap-Plug	13	1-543393	1	Insulator-Solenoid
8	121-8868	1	Fuse-Mini Blade, 20 Amp	14	32180-176	1	Cover-Block, Fuse
9	126-3991	1	Relay-Micro	15	32180-177	1	Clip-Mounting
10	32180-156	1	Cap-Plug, 6 Way	16	126-7875	1	Decal-Fuse
11	121-8867	1	Fuse-Mini Blade, 15 Amp				



Auxiliary Hydraulic Assembly

Ref.	Part Number	Qty.	Description	Ref.	Part Number	Qty.	Description
3	116-2066	1	Reservoir ASM	17	103-0384	4	Spacer
3:1		1	Reservoir-HYD ●	18	3253-4	4	Washer-Lock
3:1:1	103-1948	1	Cap-Reservoir, HYD	19	322-10	4	Screw-HH
3:1:2	103-1949	1	Gasket-Cap	20	1-633750	1	Filter-Oil, HYD
3:2	115-4212	1	Decal-Warning	21	103-1912	1	Adapter-Straight
4	32105-15	2	Screw-HWH	21:1	237-42	1	O-Ring
5	104-7201	2	Nut-HF	22	103-2156	1	Fitting-Straight
6	126-9861	1	Cylinder-Hydraulic	22:1	1-603921	1	O-Ring
7	283-55	2	Pin-Clevis	22:2	103-1020	1	O-Ring
8	42195	1	Pin-Clevis	23	103-2153	1	Fitting-90 DEG
9	3290-467	3	Pin-Hair	23:1	1-603920	1	O-Ring
10	126-9796	1	Pump-Hydraulic	23:2	1-603992	1	O-Ring
11	3230-22	3	Screw-CARR	24	103-1807	1	Fitting-Barbed, 45 DEG
12	104-8300	3	Nut-HF, NI	24:1	237-42	1	O-Ring
13	116-6667	1	Pulley	25	126-9952	1	Fitting-STR
14	3241-6	2	Screw-SQH	26	126-9468	1	Hydraulic Hose ASM
15	126-9803	1	Belt-V	27	126-9469	1	Hydraulic Hose ASM
16	126-9321	1	Manifold ASM	28	126-9470	1	Hydraulic Hose ASM

● Not serviced separately

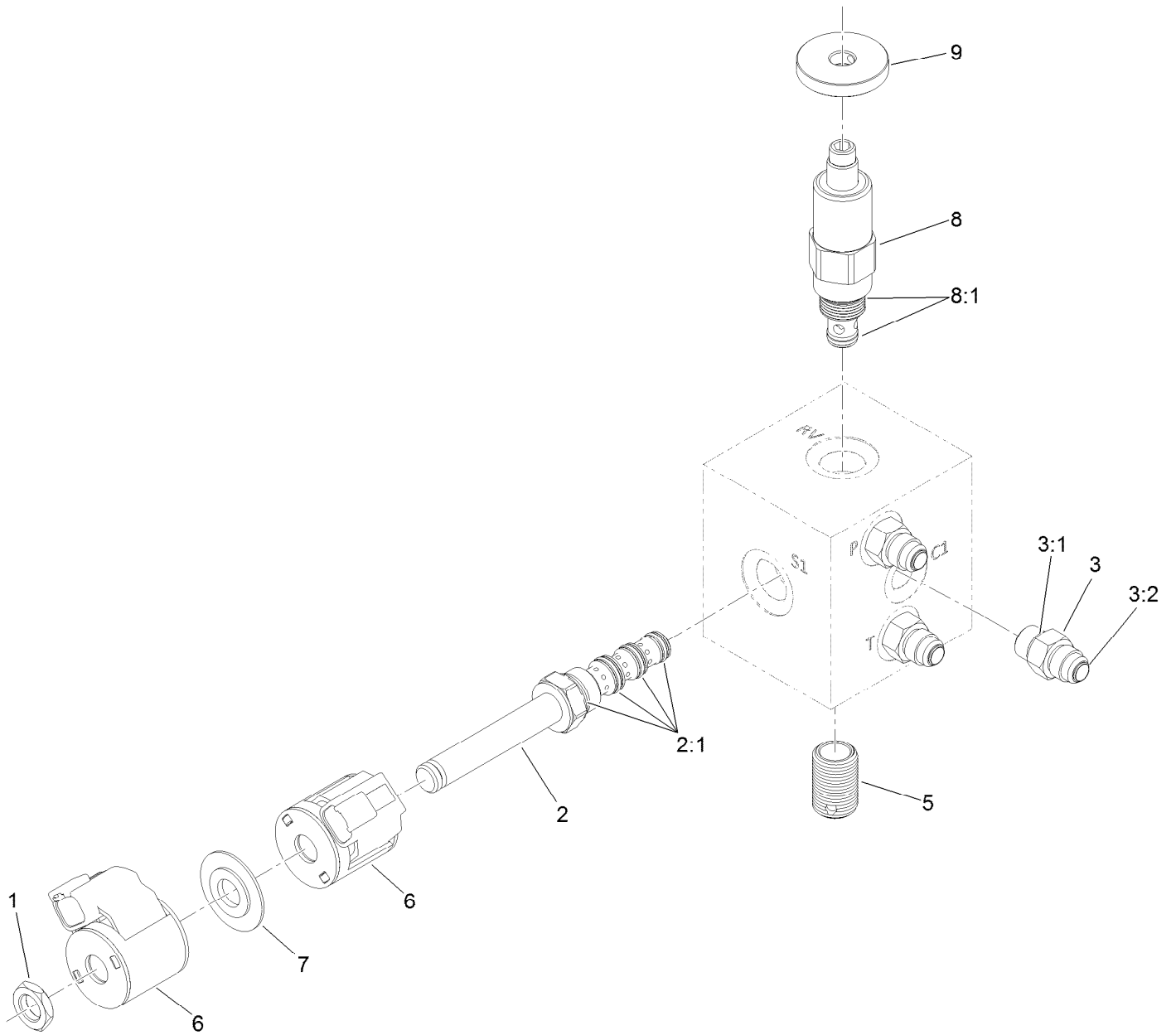


Auxiliary Hydraulic Assembly (continued)

<i>Ref.</i>	<i>Part Number</i>	<i>Qty.</i>	<i>Description</i>	<i>Ref.</i>	<i>Part Number</i>	<i>Qty.</i>	<i>Description</i>
29	126-9471	1	Hydraulic Hose ASM	32:1	1-603921	1	O-Ring
30	135-1224	1	Housing-Depth Control	32:2	103-1020	1	O-Ring
31	135-1385	1	Bracket-Depth Control	33	2412-137	1	Clamp-R, Double
32	103-2155	1	Fitting-90 DEG				

● Not serviced separately

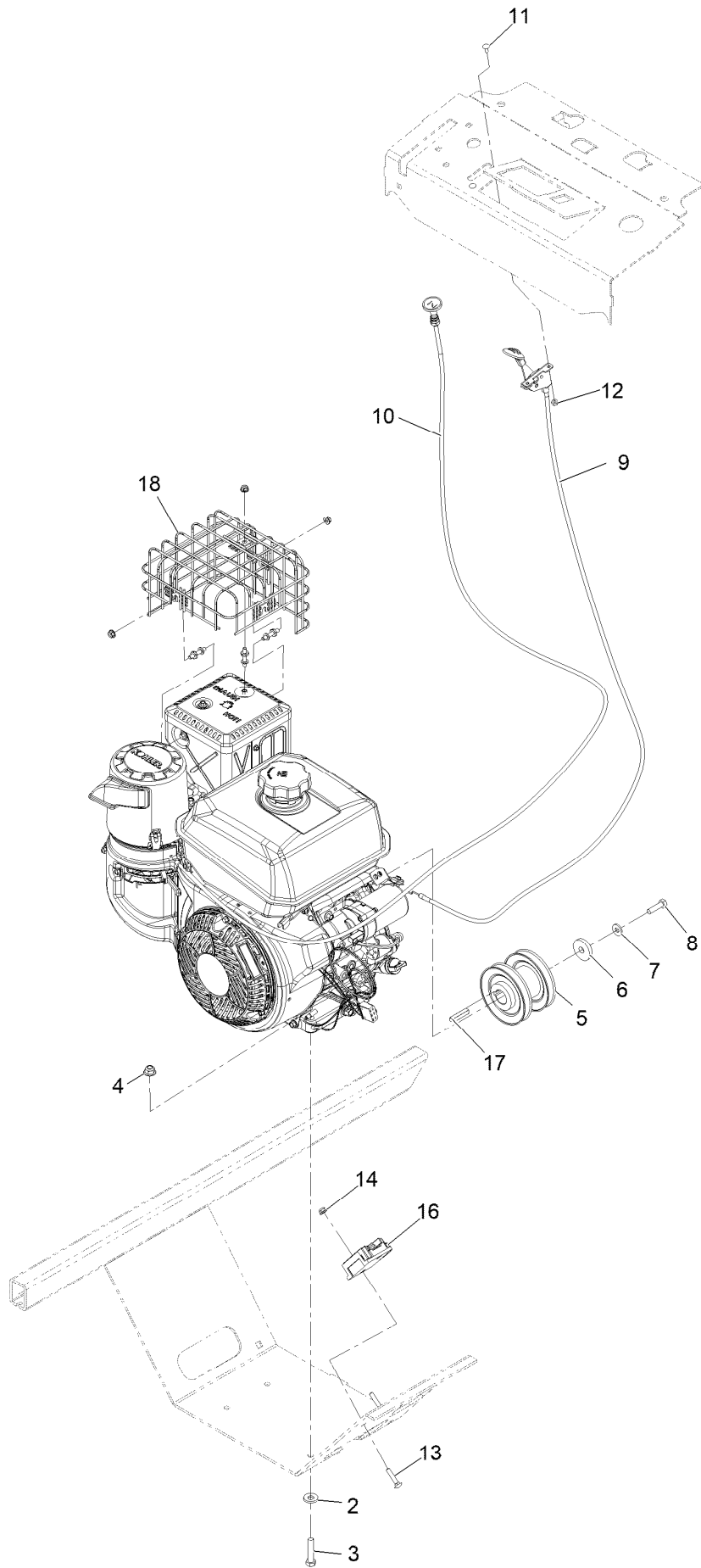
Manifold Assembly No. 126-9321



Manifold Assembly No. 126-9321 (continued)

<i>Ref.</i>	<i>Part Number</i>	<i>Qty.</i>	<i>Description</i>	<i>Ref.</i>	<i>Part Number</i>	<i>Qty.</i>	<i>Description</i>
1	110-2634	1	Nut-Coil	5	127-3885	1	Nipple-Filter
2	126-9379	1	Valve-Solenoid	6	112-0197	2	E Coil-12V DC
2:1	112-6520	1	Seal Kit	7	120-2586	1	Spacer-Coil
3	103-2156	3	Fitting-Straight	8	135-1855	1	Valve-Relief, Poppet Type
3:1	1-603921	1	O-Ring	8:1	126-9388	1	Seal Kit
3:2	103-1020	1	O-Ring	9	116-9396	1	Knob (1.5 DIA)

Engine Assembly



Engine Assembly (continued)

<i>Ref.</i>	<i>Part Number</i>	<i>Qty.</i>	<i>Description</i>	<i>Ref.</i>	<i>Part Number</i>	<i>Qty.</i>	<i>Description</i>
2	98-5975	4	Washer-Spring Disc 3/8	10	135-2133	1	Cable-Choke, Push/Pull
3	323-9	4	Screw-HH 3/8-16 X 1 3/4	11	1-807513	2	Bolt-Carriage #10-24 X 1/2
4	104-8301	4	Nut-Nyloc 3/8-16 Flg	12	3296-2	2	Nut-Nyloc #10-24
5	126-9142	1	Pulley	13	3229-3	2	Bolt-Carriage 1/4-20 X 1 1/4
6	1-543610	1	Washer	14	104-7201	2	Nut-Nyloc 1/4-20 Flg
7	1-303334	1	Washer-Spring Disc 5/16	16	126-9904	1	Regulator
8	33114-030	1	Screw-HH M8-1.25 X 30Mm	17	135-3980	1	Key-Square, 7Mm
9	109-3958	1	Control-Throttle	18	135-3366	1	Kit-Muffler Birdcage

Notes:

Notes:



Count on it.