



**Count on it.**

**Parts Catalog**

**E-Z Vac™ Standard Bagger  
TITAN® HD Riding Mower**

Model No. 78481—Serial No. 40000000 and Up



# Ordering Replacement Parts

To order replacement parts, please supply the part number, the quantity, and the description of each part desired.

## Understanding Reference Numbers

Each identified part in an illustration has a reference number. The reference number for a part also appears in the parts list, along with other information about the part.

This catalog uses two special reference number formats, one to indicate parts in a service assembly and another to indicate the quantity of a given part in an illustration.

## Service Assembly Reference Numbers

Parts in service assemblies have reference numbers in the form a:b. The a represents the reference number of the entire service assembly and the b represents a sequential number unique to each part within the service assembly.

For example, a wheel assembly might be identified by reference number 6, the tire by 6:1, the valve by 6:2, and the wheel by 6:3. When you order the assembly identified by reference number 6, you receive all parts identified by reference numbers 6:1, 6:2, and 6:3. However, you may also order any part individually. Reference numbers of this type appear in illustration and in parts lists.

## Reference Numbers Indicating Quantity

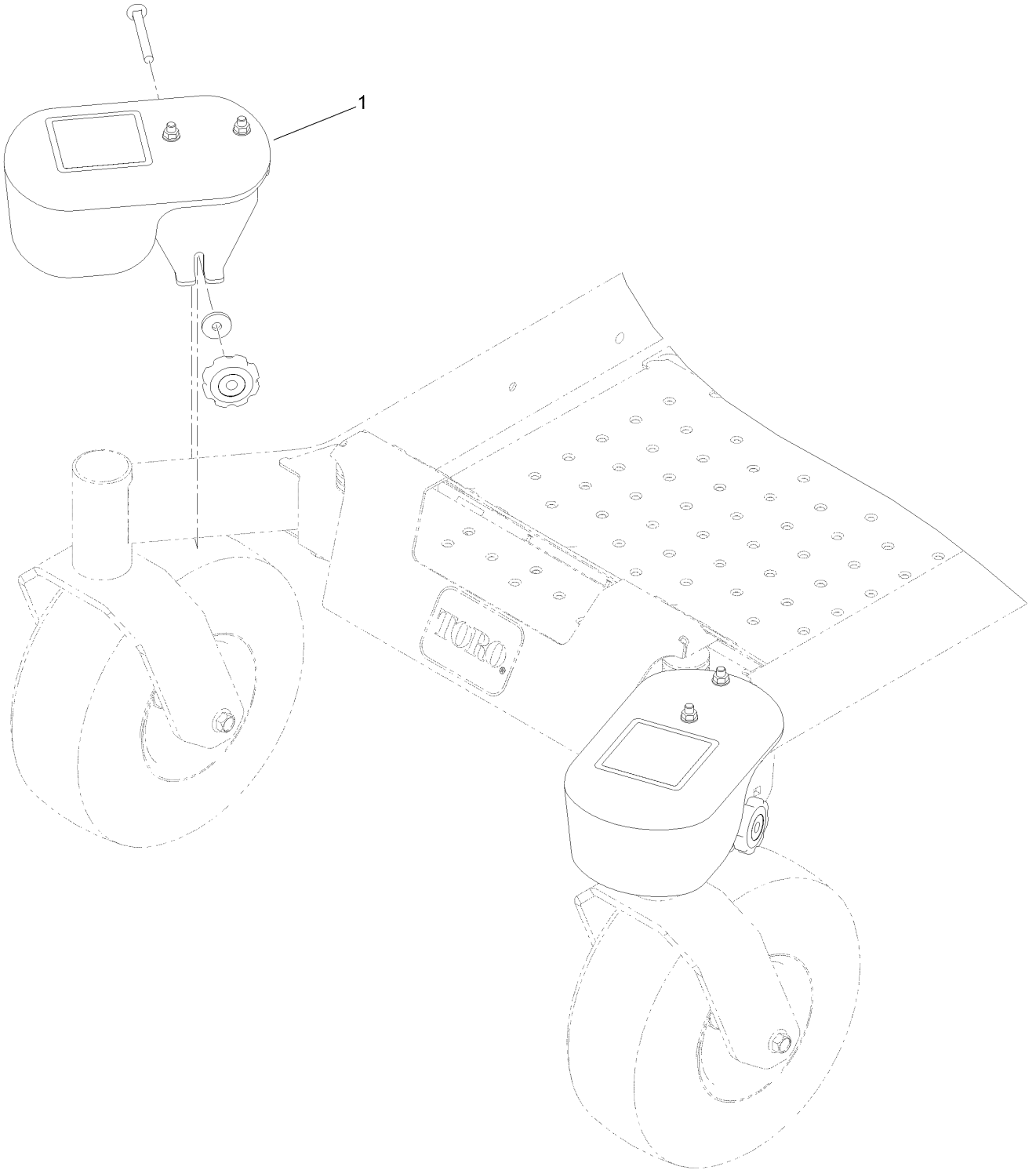
In an illustration, if a reference number indicates more than one part, the reference number has the form nX y. The n represents the quantity of the part, the X is the multiplication symbol, and the y represents the reference number.

For example, in an illustration, the reference number 2X 37 means that two of the parts identified by reference number 37 are indicated.

# Contents

Caster Weight Assembly ..... 4  
Caster Weight Kit No. 126-8639 ..... 6  
Bagger and Hood Assembly ..... 8  
Bag Assembly No. 116-0754 ..... 10  
Bagger Hood Assembly No. 121-3215 ..... 12

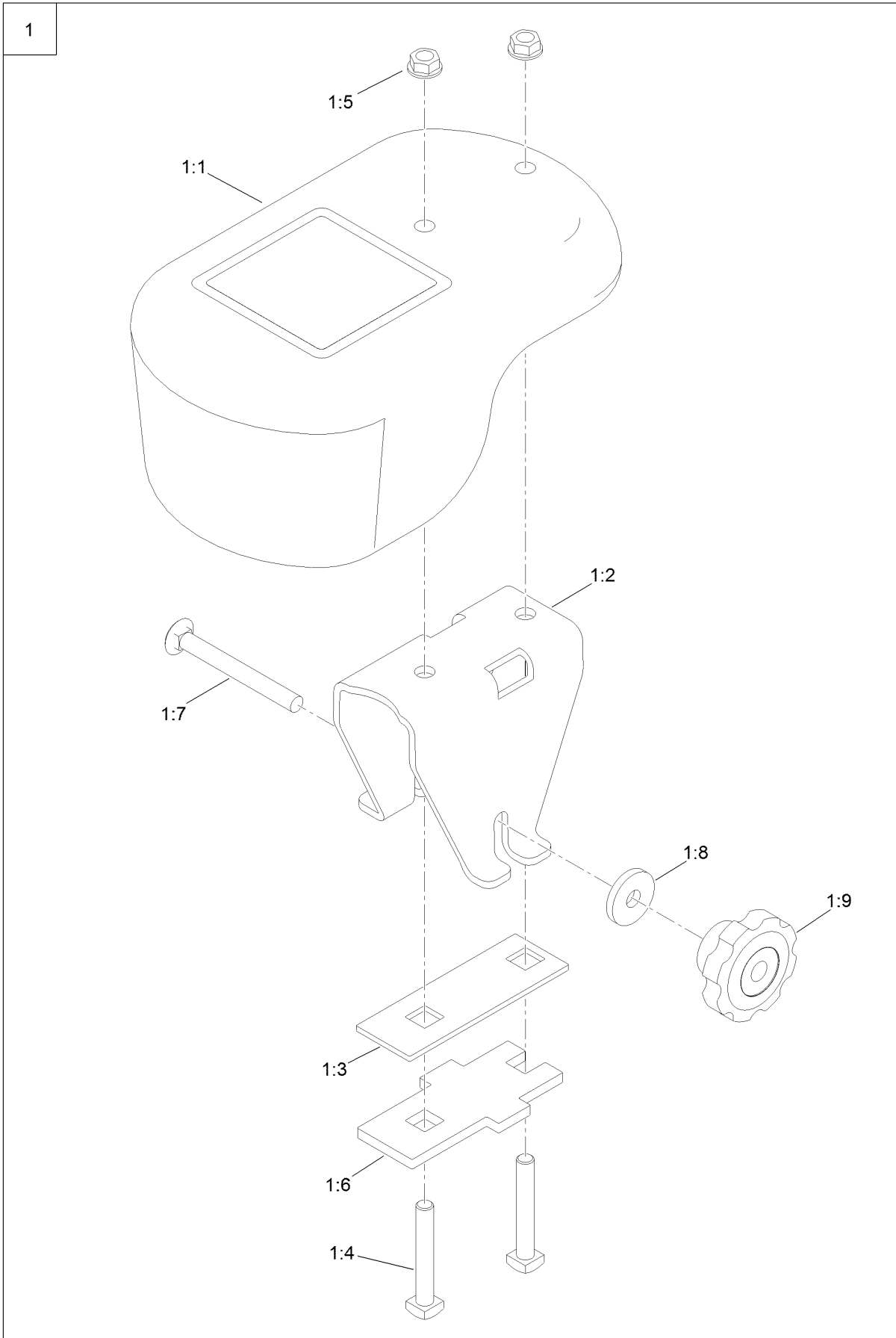
# Caster Weight Assembly



## Caster Weight Assembly (continued)

| <i>Ref.</i> | <i>Part Number</i> | <i>Qty.</i> | <i>Description</i> |
|-------------|--------------------|-------------|--------------------|
| 1           | 126-8639           | 1           | Caster Weight Kit  |

# Caster Weight Kit No. 126-8639



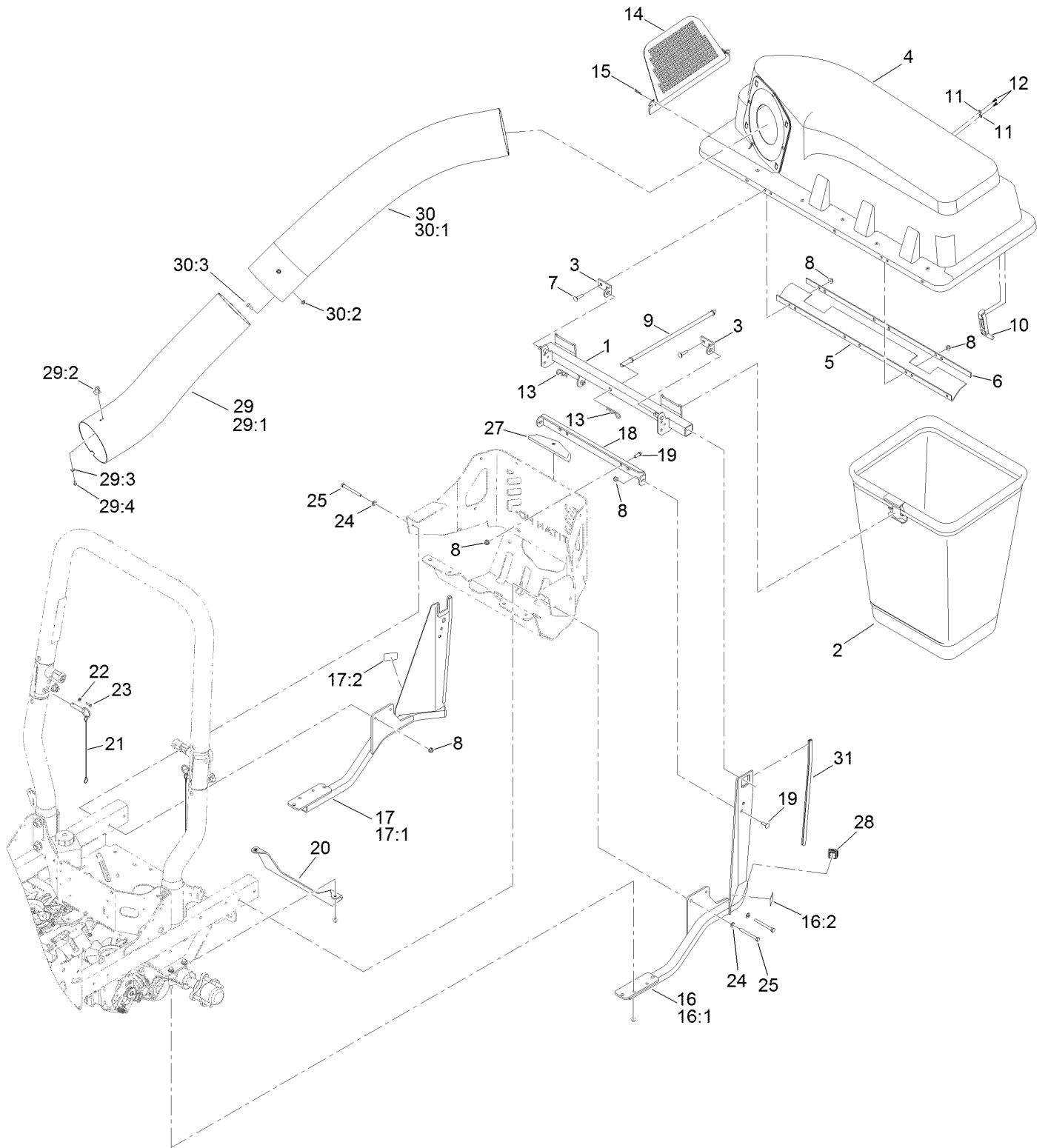
## Caster Weight Kit No. 126-8639 (continued)

| <i>Ref.</i> | <i>Part Number</i> | <i>Qty.</i> | <i>Description</i>    |
|-------------|--------------------|-------------|-----------------------|
| 1           |                    | 2           | Caster Weight ASM ●   |
| 1:1         | 126-7639           | 1           | Weight With Decal ASM |
| 1:2         | 126-5967-01        | 1           | Channel-Mount, Weight |
| 1:3         | 126-5966-01        | 1           | Plate-Bracket, Weight |
| 1:4         | 103-2500           | 2           | Bolt-SQH              |

| <i>Ref.</i> | <i>Part Number</i> | <i>Qty.</i> | <i>Description</i>    |
|-------------|--------------------|-------------|-----------------------|
| 1:5         | 3290-357           | 2           | Nut-HHF, Whiz         |
| 1:6         | 126-5961-01        | 1           | Plate-Bracket, Weight |
| 1:7         | 3231-11            | 1           | Screw-CARR            |
| 1:8         | 130-5815           | 1           | Washer-Backup         |
| 1:9         | 109-1092           | 1           | Knob                  |

● Not serviced separately

# Bagger and Hood Assembly



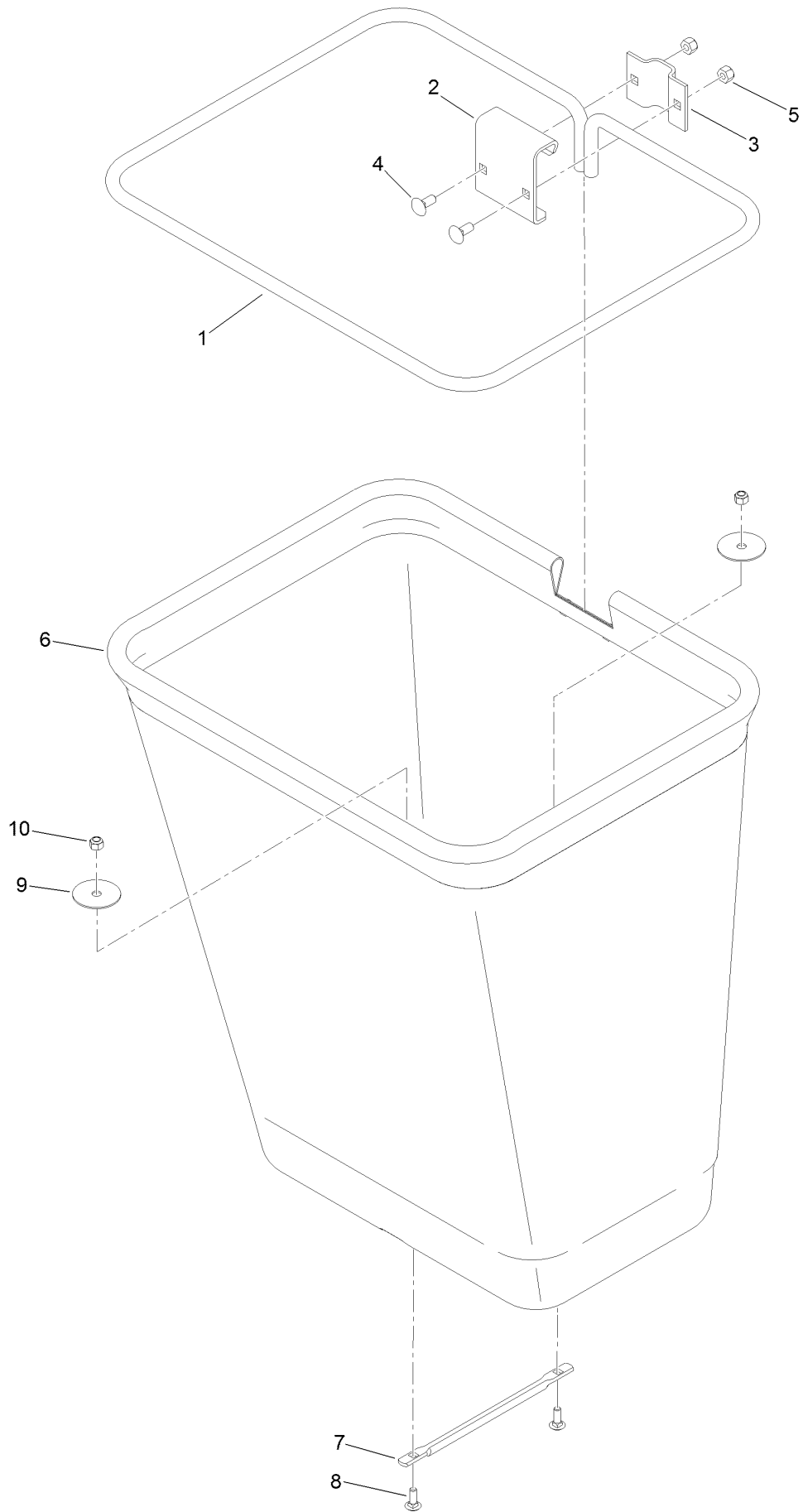


## Bagger and Hood Assembly (continued)

| <i>Ref.</i> | <i>Part Number</i> | <i>Qty.</i> | <i>Description</i>    | <i>Ref.</i> | <i>Part Number</i> | <i>Qty.</i> | <i>Description</i>      |
|-------------|--------------------|-------------|-----------------------|-------------|--------------------|-------------|-------------------------|
| 1           | 116-4783-03        | 1           | Frame Pivot ASM       | 18          | 140-9504-03        | 1           | Angle - Support, Bagger |
| 2           | 116-0754           | 2           | Bag And Frame ASM     | 19          | 322-4              | 4           | Screw-HH                |
| 3           | 112-3987           | 2           | Bracket-Pivot, Hopper | 20          | 126-5672-03        | 1           | Support-Transmission    |
| 4           | 121-3215           | 1           | Bagger Hood ASM       | 21          | 106-9951           | 2           | Hitch Pin ASM           |
| 5           | 116-4126           | 1           | Seal                  | 22          | 3256-14            | 2           | Washer-Flat             |
| 6           | 116-4127-03        | 1           | Plate-Backing         | 23          | 32104-4            | 2           | Screw                   |
| 7           | 3230-3             | 4           | Screw-CARR            | 24          | 3256-23            | 4           | Washer-Plain            |
| 8           | 104-8300           | 12          | Nut-HF, NI            | 25          | 126-8742           | 4           | Screw-HH                |
| 9           | 116-6491           | 1           | Rod-Hold Down, Hood   | 27          | 126-8299           | 1           | Cover-Hitch             |
| 10          | 116-4992           | 1           | Latch-Rubber          | 28          | 126-9159           | 2           | Plug                    |
| 11          | 3256-77            | 2           | Washer-Flat           | 29          | 116-4128           | 1           | Lower Tube ASM          |
| 12          | 107-7461           | 2           | Screw-Plastite        | 29:1        | 116-4495           | 1           | Tube-Lower              |
| 13          | 3290-355           | 2           | Pin-Hair              | 29:2        | 103-4081           | 2           | Latch-Keeper ●          |
| 14          | 112-3993           | 1           | Screen-Bagger         | 29:3        | 3256-14            | 2           | Washer-Flat             |
| 15          | 3290-307           | 2           | Pin-Cotter            | 29:4        | 3290-500           | 2           | Screw-PPH               |
| 16          | 126-9662           | 1           | RH Bagger Support ASM | 30          | 116-4825           | 1           | Upper Tube ASM          |
| 16:1        | 126-9200-03        | 1           | Support-Bagger, RH    | 30:1        | 116-4496           | 1           | Tube-Upper              |
| 16:2        | 106-5517           | 1           | Decal-Warning         | 30:2        | 104-7201           | 3           | Nut-HF                  |
| 17          | 126-9663           | 1           | LH Bagger Support ASM | 30:3        | 1-803076           | 3           | Screw                   |
| 17:1        | 126-9201-03        | 1           | Support-Bagger, LH    | 31          | 126-9923           | 2           | Strip-Trim              |
| 17:2        | 106-5517           | 1           | Decal-Warning         |             |                    |             |                         |

● Kit No. 103-4188 - Contains catch, rubber latch, and mounting hardware

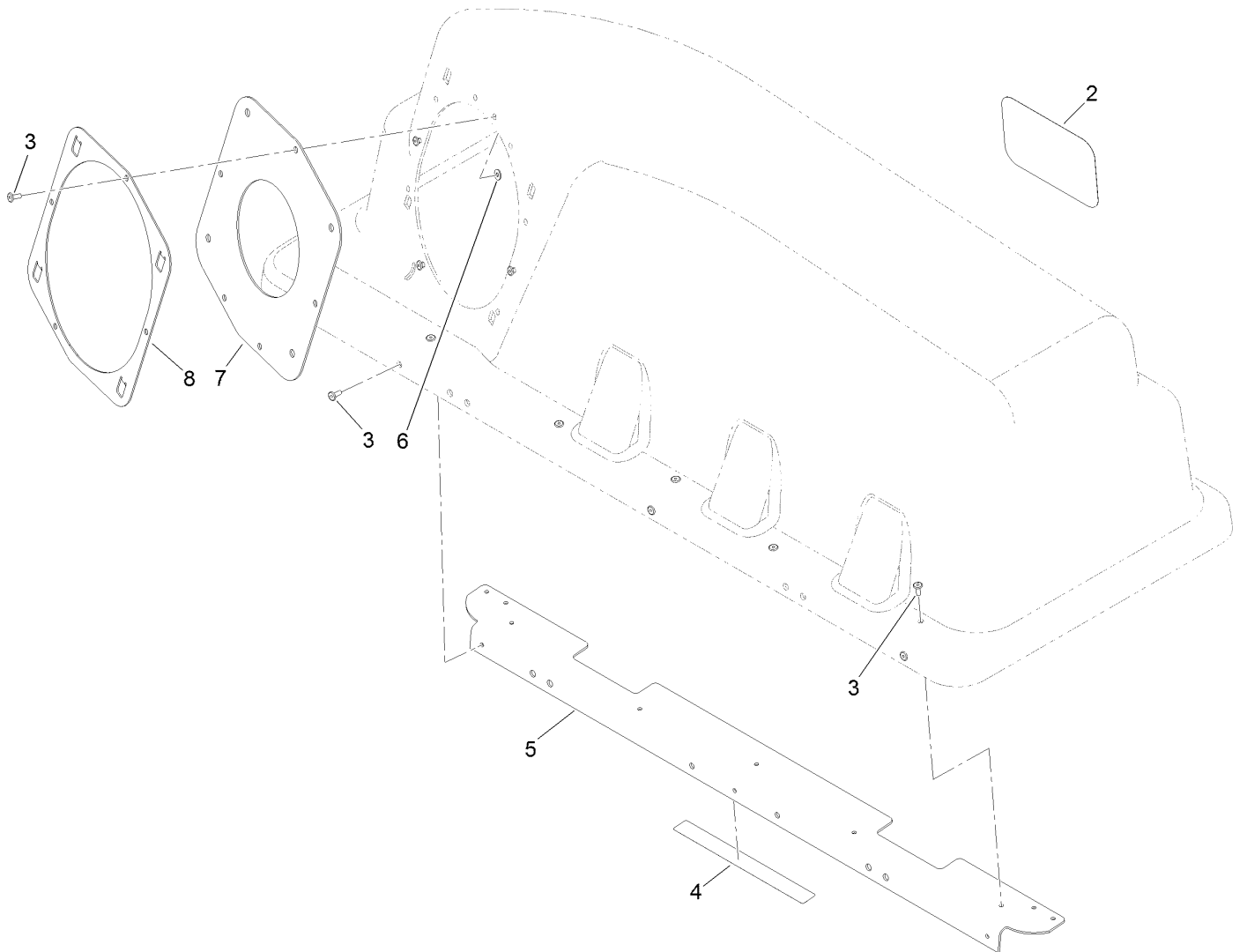
# Bag Assembly No. 116-0754



## Bag Assembly No. 116-0754 (continued)

| <i>Ref.</i> | <i>Part Number</i> | <i>Qty.</i> | <i>Description</i> | <i>Ref.</i> | <i>Part Number</i> | <i>Qty.</i> | <i>Description</i> |
|-------------|--------------------|-------------|--------------------|-------------|--------------------|-------------|--------------------|
| 1           | 1-653529-03        | 1           | Frame-Bag          | 6           | 116-0757           | 1           | Bag                |
| 2           | 114973-03          | 1           | Hanger-Bag         | 7           | 1-653566           | 1           | Handle-Bag         |
| 3           | 114974-03          | 1           | Clamp              | 8           | 3229-1             | 2           | Screw-CARR         |
| 4           | 3230-1             | 2           | Bolt-CARR          | 9           | 1-653036           | 2           | Washer             |
| 5           | 3296-29            | 2           | Nut-Lock, NI       | 10          | 3296-42            | 2           | Nut-Lock, NI       |

# Bagger Hood Assembly No. 121-3215



## Bagger Hood Assembly No. 121-3215 (continued)

| <i>Ref.</i> | <i>Part Number</i> | <i>Qty.</i> | <i>Description</i>    | <i>Ref.</i> | <i>Part Number</i> | <i>Qty.</i> | <i>Description</i> |
|-------------|--------------------|-------------|-----------------------|-------------|--------------------|-------------|--------------------|
| 2           | 99-4693            | 1           | Decal                 | 6           | 9202704            | 4           | Washer-Flat        |
| 3           | 114439             | 12          | Rivet-Blind           | 7           | 116-4478           | 1           | Gasket             |
| 4           | 109-6809           | 1           | Decal-Caution, Bagger | 8           | 112-4000-03        | 1           | Ring-Retainer      |
| 5           | 116-5071-03        | 1           | Stiffener-Bagger, Top |             |                    |             |                    |

**Notes:**

**Notes:**



**Count on it.**