



**Count on it.**

**Parts Catalog**

**Revolution 60V String Trimmer**

Model No. 66110T—Serial No. 323000001 and Up



# Ordering Replacement Parts

To order replacement parts, please supply the part number, the quantity, and the description of each part desired.

## Understanding Reference Numbers

Each identified part in an illustration has a reference number. The reference number for a part also appears in the parts list, along with other information about the part.

This catalog uses two special reference number formats, one to indicate parts in a service assembly and another to indicate the quantity of a given part in an illustration.

## Service Assembly Reference Numbers

Parts in service assemblies have reference numbers in the form a:b. The a represents the reference number of the entire service assembly and the b represents a sequential number unique to each part within the service assembly.

For example, a wheel assembly might be identified by reference number 6, the tire by 6:1, the valve by 6:2, and the wheel by 6:3. When you order the assembly identified by reference number 6, you receive all parts identified by reference numbers 6:1, 6:2, and 6:3. However, you may also order any part individually. Reference numbers of this type appear in illustration and in parts lists.

## Reference Numbers Indicating Quantity

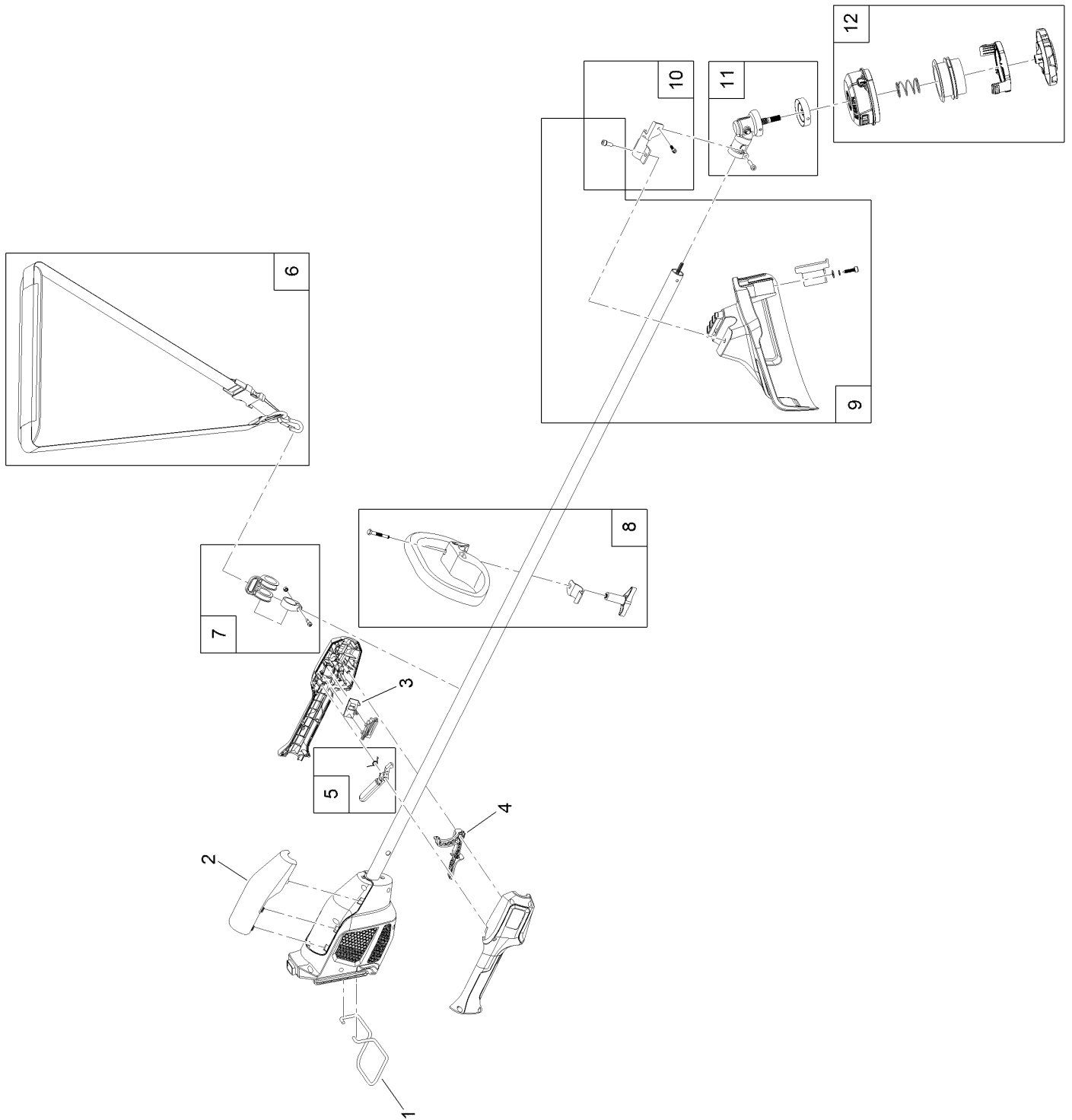
In an illustration, if a reference number indicates more than one part, the reference number has the form nX y. The n represents the quantity of the part, the X is the multiplication symbol, and the y represents the reference number.

For example, in an illustration, the reference number 2X 37 means that two of the parts identified by reference number 37 are indicated.

# Contents

Revolution 60V String Trimmer Assembly ..... 4  
Attachments and Accessories ..... 6

# Revolution 60V String Trimmer Assembly



## Revolution 60V String Trimmer Assembly (continued)

<i>Ref.</i>	<i>Part Number</i>	<i>Qty.</i>	<i>Description</i>	<i>Ref.</i>	<i>Part Number</i>	<i>Qty.</i>	<i>Description</i>
1	147-1831	1	Guard-Wire	8	147-1827	1	Handle-Assist
2	147-1838	1	Cover-Motor Housing	9	147-1828	1	Guard-Grass
3	147-1839	1	Cover-Two Speed Switch	10	147-1836	1	Bracket-Mount, Grass Shield
4	147-1840	1	Paddle-Speed Control Trigger	11	147-1835	1	Gear Case-String Trimmer, Lower Head
5	147-1841	1	Paddle-Lockout Trigger	12	147-1830	1	Head-Bump
6	139-5334	1	Shoulder-Strap, 60V				
7	147-1833	1	Collar-Mount, Shoulder Strap				

# Attachments and Accessories

## For 66110T Revolution 60V String Trimmer

<b>Product Name</b>	<b>Model/Part</b>
60V Battery Charger 1 AMP .....	88610
60V Battery Charger 2 AMP .....	88602
60V Rapid Battery Charger 5.4 AMP .....	88605
60V Six Pod Battery Charger 12 AMP .....	66550
60V Battery 2.0 AH .....	88620
60V LI-ION Battery 2.5 AH.....	88625
60V LI-ION, Battery 4.0 AH .....	88640
60V LI-ION Battery 5.0 AH.....	88650
60V LI-ION Battery 6.0 AH.....	88660
60V LI-ION Battery 7.5 AH.....	88675
60V LI-ION Battery 10.0 AH .....	66810
Tether-Backpack.....	66005

**Notes:**



**Count on it.**