



Bore Drive Head

Dingo® Attachment

Model No. 22420—210000001 and Up

Parts Catalog

Ordering Replacement Parts

To order replacement parts, please supply: the part number, the quantity, and the description of each part desired.

Understanding Reference Numbers

Each identified part in an illustration has a reference number. The reference number for a part also appears in the parts list, along with other information about the part.

This catalog uses two special reference number formats, one to indicate parts in a service assembly and another to indicate the quantity of a given part in an illustration.

Service Assembly Reference Numbers

Parts in service assemblies have reference numbers in the form **a:b**. The **a** represents the reference number of the entire service assembly and the **b** represents a sequential number unique to each part within the service assembly.

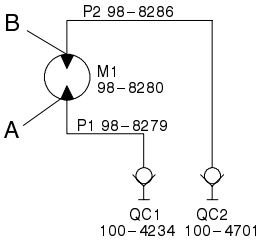
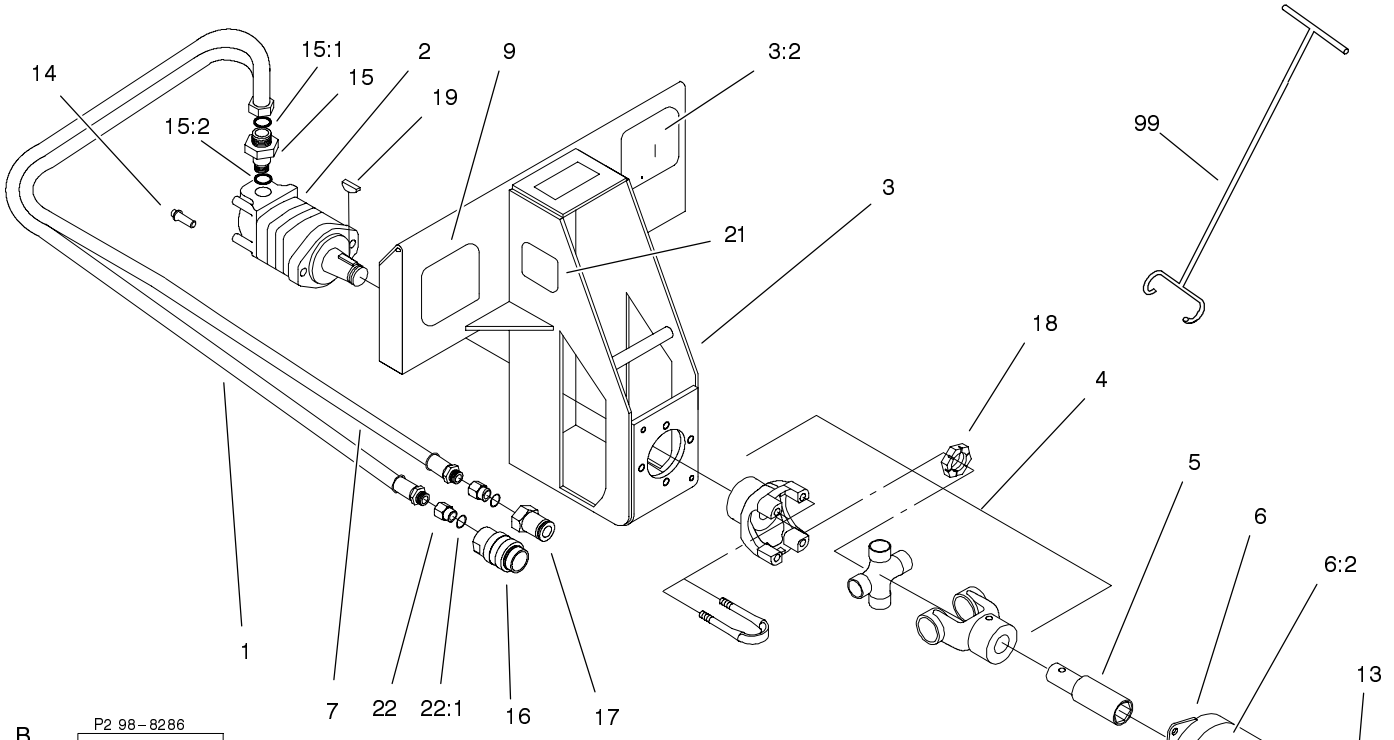
For example, a wheel assembly might be identified by reference number **6**, the tire by **6:1**, the valve by **6:2**, and the wheel by **6:3**. When you order the assembly identified by reference number **6**, you receive all parts identified by reference numbers **6:1**, **6:2**, and **6:3**. However, you may also order any part individually.

Reference numbers of this type appear in illustrations and in part lists.

Reference Numbers Indicating Quantity

In an illustration, if a reference number indicates more than one part, the reference number has the form **nX y**. The **n** represents the quantity of the part, the **X** is the multiplication symbol, and the **y** represents the reference number.

For example, in an illustration, the reference number **2X 37** means that two of the parts identified by reference number **37** are indicated.



COMPONENT	FUNCTION	DISPLACEMENT	DIAMETER
M1	BORING	19.2 IN ³ /REV 302 CC/REV	
P1			.50 IN 12.7 MM
P2			.50 IN 12.7 MM

C-2747

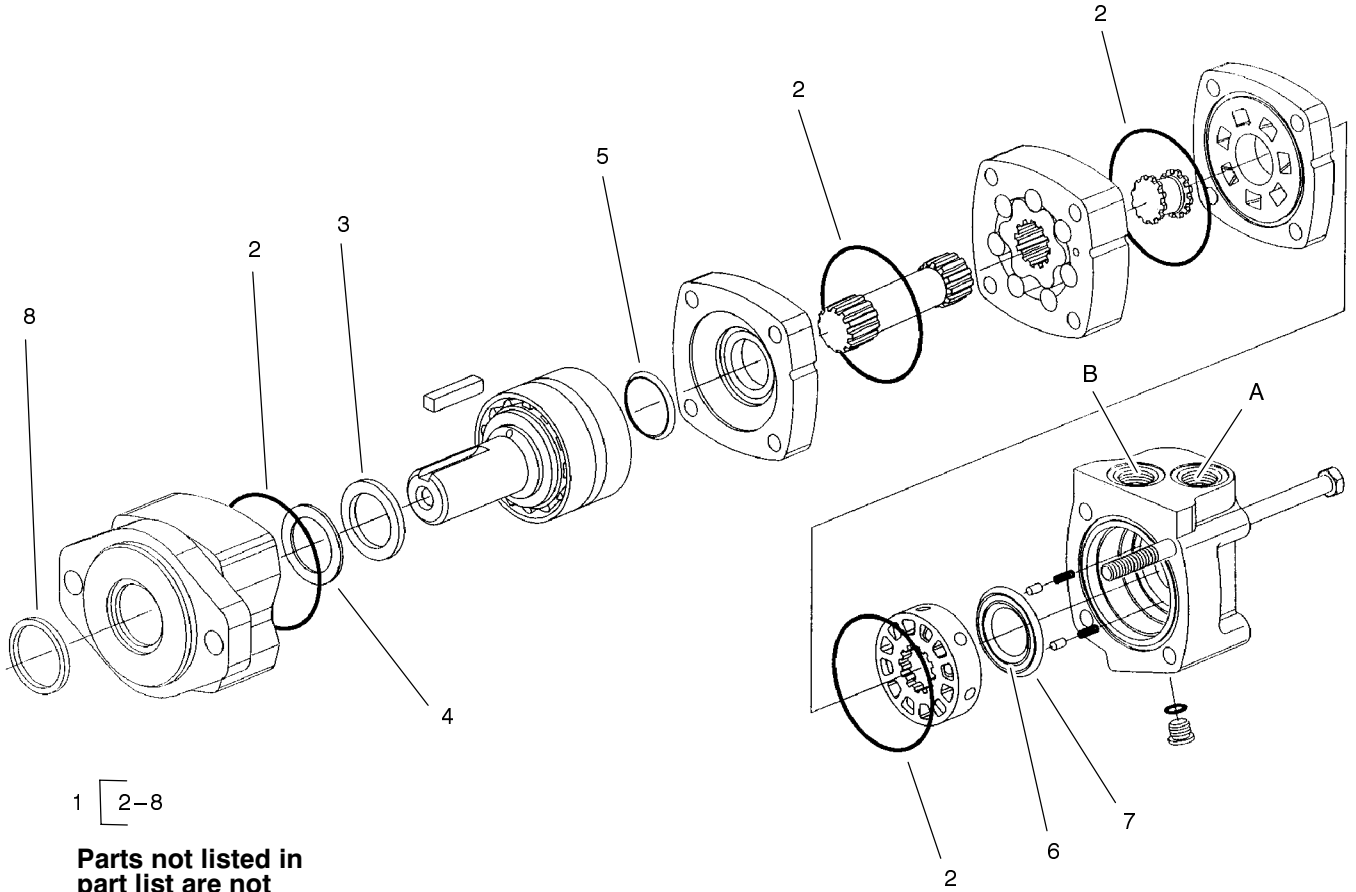
Sheet No.:1

Bore Drive Head Assembly

Ref. No.	Part No.	Qty.	Description
1	98-8286	1	Hose - Hydraulic
2	98-8280	1	Motor - Hydraulic
3	99-4305	1	Frame ASM
3:2	99-9945	1	Decal-Warning
4	98-8282	1	Joint - Universal
5	98-8283	1	Coupler - Spline
6	99-4304	1	Shield ASM
6:2	99-9945	1	Decal-Warning
7	98-8279	1	Hose - Hydraulic
9	100-4762	1	Decal-Dingo
12	323-4	2	Screw-HH
13	3253-5	2	Washer-Lock
14	98-9063	2	Screw
15	340-6	2	Fitting-HYD, Straight
15:1	237-30	1	O-Ring
15:2	237-80	1	O-Ring
16	100-4234	1	Coupler-Face, Flush
*16:1	100-6119	1	Kit-Seal
17	100-4701	1	Nipple-Connect, Pressure
*17:1	100-6120	1	Kit-Seal
18	99-4301	1	Nut - Shaft
19	99-4302	1	Key - Shaft
21	98-3269	1	Decal-Made In USA
22	100-4617	2	Adapter-Hydraulic

Ref. No.	Part No.	Qty.	Description
22:1	237-80	1	O-Ring
99	98-9919	1	Rod Guide Tool

* Not illustrated



1 [2-8

Parts not listed in part list are not serviced separately

Sheet No.:A1
C-2754

Hydraulic Motor Assembly No. 98-8280

Ref. No.	Part No.	Qty.	Description
1	56-6890	1	Kit-Seal

Ref. No.	Part No.	Qty.	Description

