



TX 420

Dingo[®] Compact Utility Loader

Model No. 22306—210000501 and Up

Parts Catalog

Ordering Replacement Parts

To order replacement parts, please supply: the part number, the quantity, and the description of each part desired.

Understanding Reference Numbers

Each identified part in an illustration has a reference number. The reference number for a part also appears in the parts list, along with other information about the part.

This catalog uses two special reference number formats, one to indicate parts in a service assembly and another to indicate the quantity of a given part in an illustration.

Service Assembly Reference Numbers

Parts in service assemblies have reference numbers in the form **a:b**. The **a** represents the reference number of the entire service assembly and the **b** represents a sequential number unique to each part within the service assembly.

For example, a wheel assembly might be identified by reference number **6**, the tire by **6:1**, the valve by **6:2**, and the wheel by **6:3**. When you order the assembly identified by reference number **6**, you receive all parts identified by reference numbers **6:1**, **6:2**, and **6:3**. However, you may also order any part individually.

Reference numbers of this type appear in illustrations and in part lists.

Reference Numbers Indicating Quantity

In an illustration, if a reference number indicates more than one part, the reference number has the form **nX y**. The **n** represents the quantity of the part, the **X** is the multiplication symbol, and the **y** represents the reference number.

For example, in an illustration, the reference number **2X 37** means that two of the parts identified by reference number **37** are indicated.

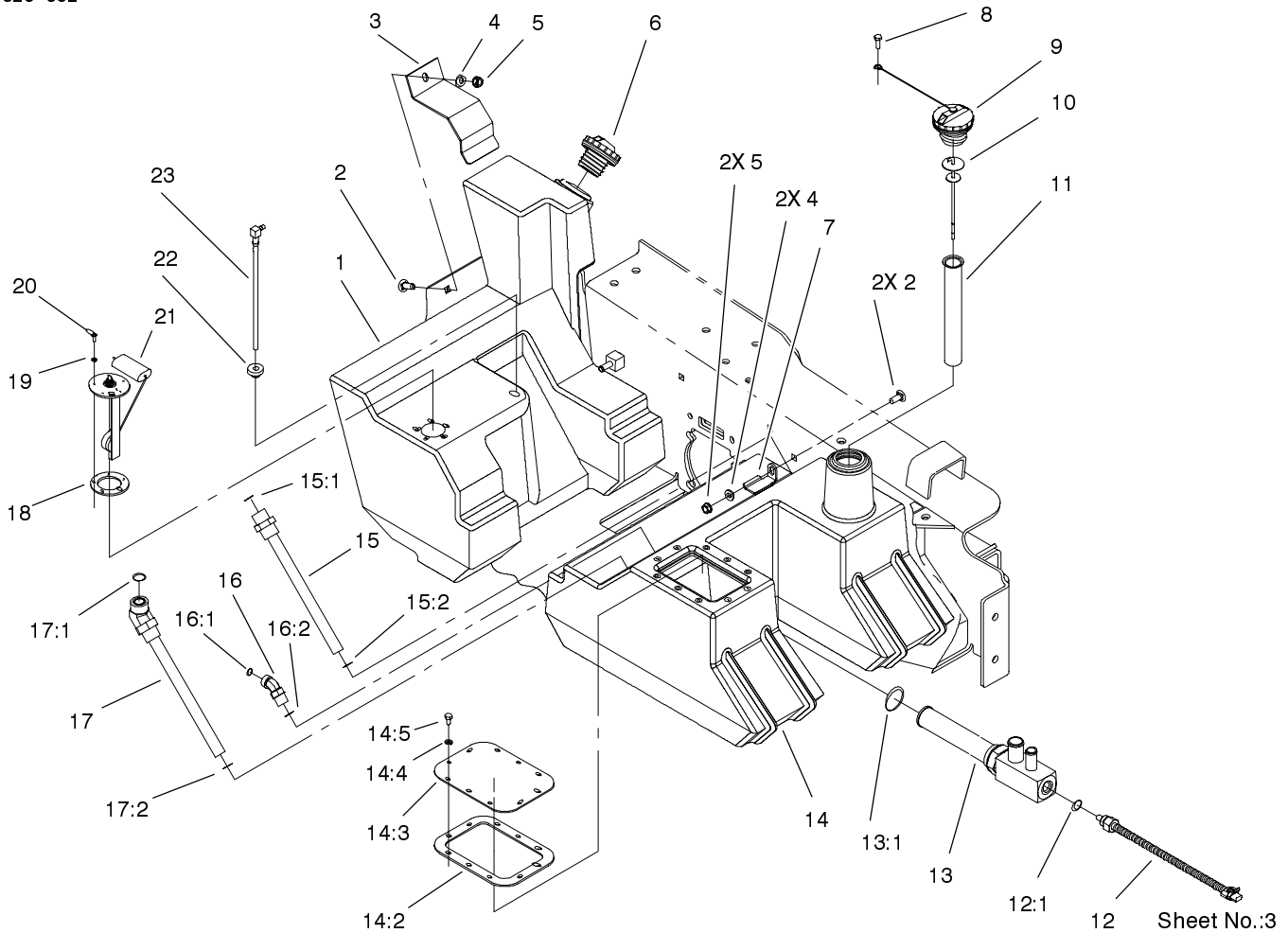
Contents

| Description | Page | Description | Page |
|-----------------------------------------------|-------------|----------------------------------|-------------|
| Main Chassis Assembly | 3 | Electrical System Assembly | 25 |
| Fuel and Hydraulic Tank Assembly | 4 | Grill Assembly | 26 |
| Track and Traction Assembly | 5 | Rear Access Panel Assembly | 27 |
| Brake Assembly | 6 | Quick Attach Assembly | 28 |
| Loader Tower and Drive Assembly | 7 | Hydraulic Cooler Assembly | 29 |
| Traction Hydraulics Assembly | 8 | Hood Assembly | 30 |
| Hydraulic Pump Assemblies | | Electrical Schematic | 31 |
| 98-8432 & 98-8431 | 9 | Hydraulic Schematic | 32 |
| Engine and Mounting Assembly | 10 | Crankshaft | 33 |
| Hydraulic Pump Assembly | 11 | Crankcase | 34 |
| Hydraulic Gear Pump Assembly No. 98-2752 .. | 13 | Oil Pan/Lubrication | 35 |
| Control Panel Assembly | 14 | Head/Valve/Breather | 36 |
| Traction Control Assembly | 15 | Ignition/Electrical | 37 |
| Principal Hydraulics Assembly | 16 | Blower Housing & Baffles | 38 |
| One Spool Valve Assembly No. 95-3537 | 18 | Starting System | 39 |
| Two Spool Valve Assembly No. 95-3536 | 19 | Fuel System | 40 |
| Loader Arm Assembly | 20 | Engine Controls | 41 |
| Loader Arm Hydraulic Assembly | 21 | Air Intake/Filtration | 42 |
| Hydraulic Cylinder Assembly No. 95-3578 | 23 | Exhaust | 43 |
| Hydraulic Cylinder Assembly No. 99-6162 | 24 | | |

Part Description Abbreviations

Part descriptions in this catalog may include the following abbreviations.

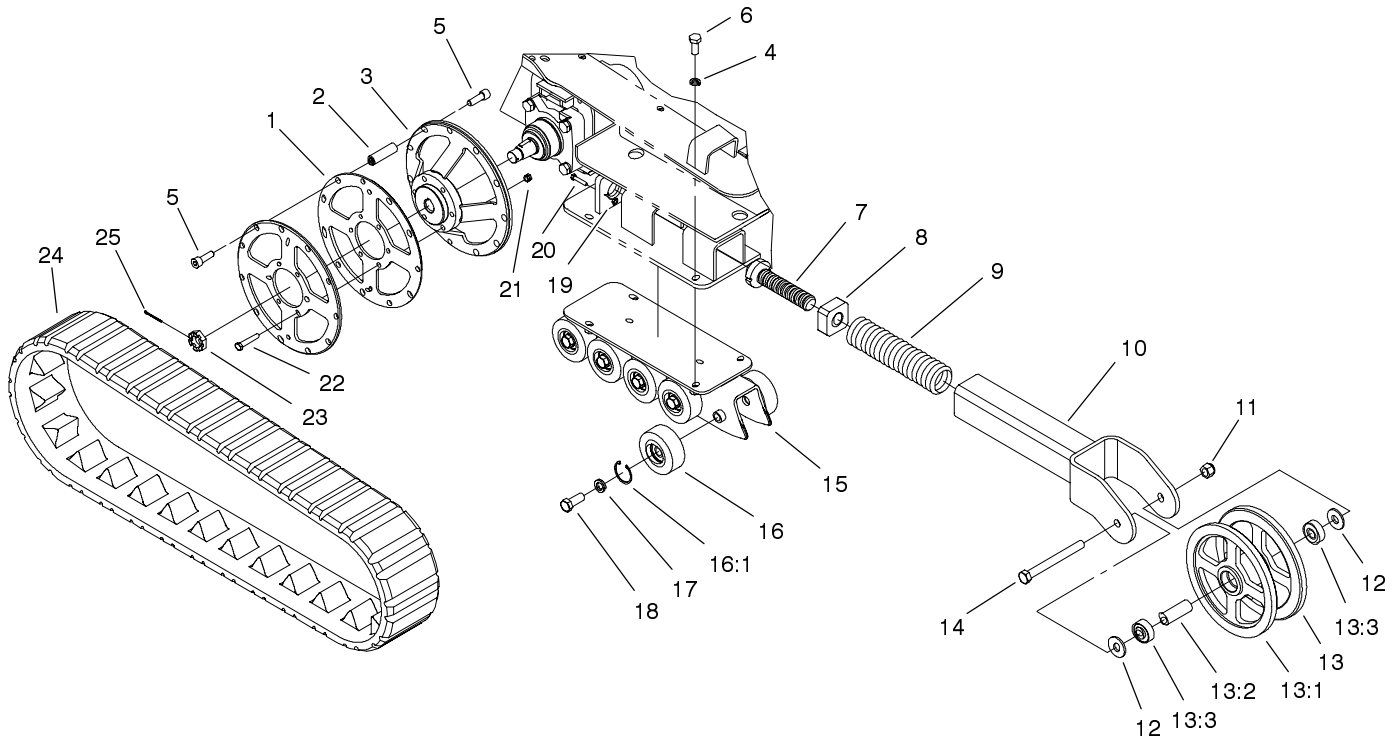
| Abbreviation | Meaning | Abbreviation | Meaning |
|---------------------|-----------------------------------|---------------------|-------------------------|
| AR | as required | HYD | hydraulic |
| ASM | assembly | INC | incorporated |
| CARR | carriage | LH | left hand |
| DEG | degrees | NI | nylon insert |
| FH | flat head | PPH | Phillips pan head |
| GA | gauge | PTH | Phillips truss head |
| HF | hex flange | PTO | power take off |
| HH | hex head | RH | right hand |
| HHF | hex head flange | SFH | slotted fillister head |
| HLH | hex lag head | SHH | slotted hex head |
| HJ | hex jam | SQH | square head |
| HOC | height-of-cut | SHWH | slotted hex washer head |
| HS | hex socket | SPH | slotted pan head |
| HSBH | hex socket button head | SRH | slotted round head |
| HSFH | hex socket flat head | STD | standard |
| HSH | hex socket head | TAP | self tapping |
| HWH | hex washer head | TTH | Torx truss head |
| HWHTF | hex washer head thread forming | WH | wing head |



Fuel and Hydraulic Tank Assembly

| Ref. No. | Part No. | Qty. | Description |
|----------|-------------|------|--------------------------------|
| 1 | 95-3619 | 1 | Tank-Fuel |
| 2 | 3231-22 | 3 | Screw-CARR |
| 3 | 100-1257-03 | 1 | Clamp-Tank, Fuel |
| 4 | 3256-38 | 3 | Washer-Flat |
| 5 | 3296-39 | 3 | Nut-Lock, NI |
| 6 | 93-3101 | 1 | Cap-Fuel |
| 7 | 98-2768-03 | 2 | Clamp-Tank, Hydraulic Oil |
| 8 | 321-4 | 1 | Screw-HH |
| 9 | 93-7160 | 1 | Cap-Oil, HYD |
| 10 | 95-3720 | 1 | Dipstick ASM |
| 11 | 29-0590 | 1 | Screen-Filler |
| 12 | 98-2765 | 1 | Sensor-Temperature, 225 DEG |
| 12:1 | 237-79 | 1 | O-Ring |
| 13 | 98-2766 | 1 | Outlet Fitting ASM |
| 13:1 | 237-101 | 1 | O-Ring |
| 14 | 100-6100 | 1 | Hydraulic Tank ASM |
| 14:2 | 100-1253 | 1 | Gasket-Cover, Access |
| 14:3 | 100-1254 | 1 | Cover-Access |
| 14:4 | 3253-3 | 10 | Washer-Lock |
| 14:5 | 321-2 | 10 | Screw-HH |
| 15 | 98-2757 | 1 | Return Fitting ASM |
| 15:1 | 237-65 | 1 | O-Ring |
| 15:2 | 237-81 | 1 | O-Ring |
| 16 | 340-101 | 1 | Fitting-HYD, 90 |

| Ref. No. | Part No. | Qty. | Description |
|----------|----------|------|---------------------|
| 16:1 | 237-30 | 1 | O-Ring |
| 16:2 | 237-79 | 1 | O-Ring |
| 17 | 99-6178 | 1 | Return Fitting ASM |
| 17:1 | 237-58 | 1 | O-Ring |
| 17:2 | 237-81 | 1 | O-Ring |
| 18 | 113372 | 1 | Gasket-Sender, Fuel |
| 19 | 3253-17 | 5 | Washer-Lock/Sp |
| 20 | 3250-31 | 5 | Screw-PPH |
| 21 | 100-1298 | 1 | Sender-Fuel |
| 22 | 46-6560 | 1 | Bushing |
| 23 | 98-0185 | 1 | Pipe Stand ASM |

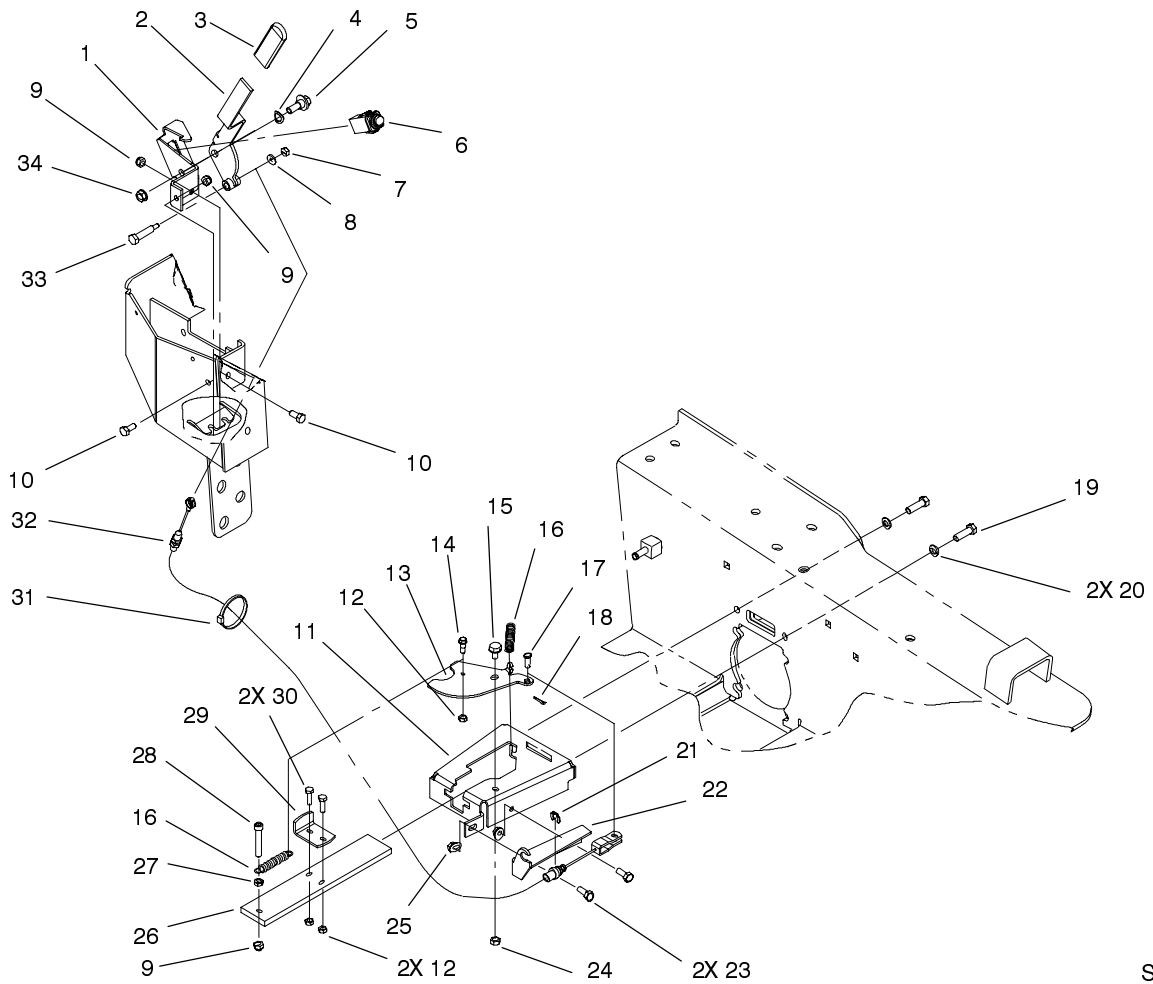


Sheet No.:4

Track and Traction Assembly

| Ref. No. | Part No. | Qty. | Description |
|----------|-------------|------|----------------------------|
| 1 | 99-6159-03 | 4 | Plate-Wheel, Drive |
| 2 | 100-1286 | 22 | Spacer-Wheel, Drive |
| 3 | 99-6180-03 | 2 | Drive Wheel ASM |
| 4 | 3253-7 | 8 | Washer-Lock |
| 5 | 3274-4 | 44 | Screw-HSH |
| 6 | 325-5 | 8 | Screw-HH |
| 7 | 98-9846 | 2 | Bolt-Tensioner |
| 8 | 95-3626 | 2 | Block-Tensioning |
| 9 | 95-3624 | 2 | Spring-Compression |
| 10 | 98-9801-03 | 2 | Tensioner Arm ASM |
| 11 | 3296-24 | 2 | Nut-Lock NI |
| 12 | 3256-7 | 4 | Washer-Flat |
| 13 | 100-6104 | 2 | Tensioner Wheel ASM |
| 13:1 | 99-6184-03 | 1 | Tensioner Wheel ASM |
| 13:2 | 98-9835 | 1 | Spacer-Wheel, Tensioner |
| 13:3 | 93-4237 | 2 | Bearing |
| 14 | 327-17 | 2 | Screw-HH |
| 15 | 104-9966-03 | 2 | Track Guide ASM |
| 16 | 99-6154 | 20 | Boggy Wheel ASM |
| 16:1 | 32120-62 | 1 | Ring-Retaining |
| 17 | 3253-8 | 20 | Washer-Lock |
| 18 | 327-4 | 20 | Screw-HH |
| 19 | 3296-42 | 2 | Nut-Lock NI |
| 20 | 321-13 | 2 | Screw-HH |
| 21 | 32153-2 | 12 | Nut-Lock |

| Ref. No. | Part No. | Qty. | Description |
|----------|----------|------|------------------|
| 22 | 323-10 | 12 | Screw-HH |
| 23 | 99-3139 | 2 | Nut-Wheel, Motor |
| 24 | 98-9800 | 2 | Track-Soucy |
| 25 | 3272-12 | 2 | Pin-Cotter |

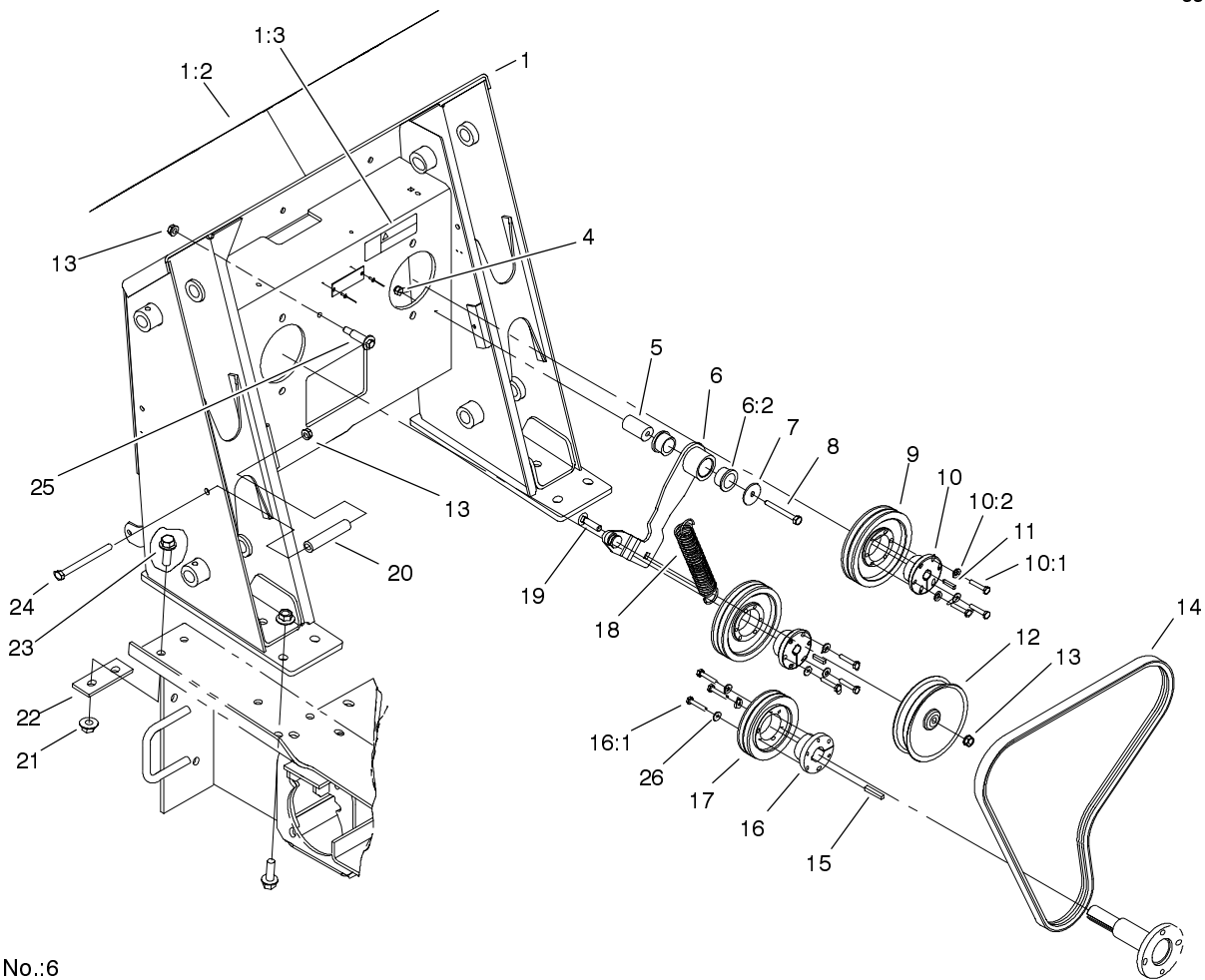


Sheet No.:5

Brake Assembly

| Ref. No. | Part No. | Qty. | Description |
|----------|-------------|------|----------------------------|
| 1 | 99-6153-03 | 1 | Bracket-Switch |
| 2 | 99-6151-03 | 1 | Brake Lever ASM |
| 3 | 62-9130 | 1 | Grip-Handle |
| 4 | 3290-221 | 1 | Washer-Spring |
| 5 | 93-2364 | 1 | Bolt - Shoulder |
| 6 | 100-1268 | 1 | Switch-Plunger, Snap Mount |
| 7 | 3296-42 | 1 | Nut-Lock NI |
| 8 | 3256-22 | 1 | Washer-Flat |
| 9 | 3296-29 | 4 | Nut-Lock |
| 10 | 322-3 | 2 | Screw-HH |
| 11 | 100-4200-03 | 2 | Brake Housing ASM |
| 12 | 3296-42 | 6 | Nut-Lock NI |
| 13 | 98-8443 | 2 | Lever-Brake |
| 14 | 42-3560 | 2 | Bolt-Shoulder |
| 15 | 37-8771 | 2 | Bolt-Shoulder |
| 16 | 87-4020 | 4 | Spring - Extension |
| 17 | 283-62 | 2 | Pin-Clevis |
| 18 | 3272-9 | 2 | Pin-Cotter |
| 19 | 323-7 | 4 | Screw-HH |
| 20 | 3253-5 | 4 | Washer-Lock |
| 21 | 32151-43 | 2 | Klipring |
| 22 | 98-8446-03 | 2 | Bracket-Cable, Brake |
| 23 | 322-4 | 4 | Screw-HH |
| 24 | 3296-47 | 2 | Nut-Lock, NI |
| 25 | 32128-20 | 4 | Nut-HF |

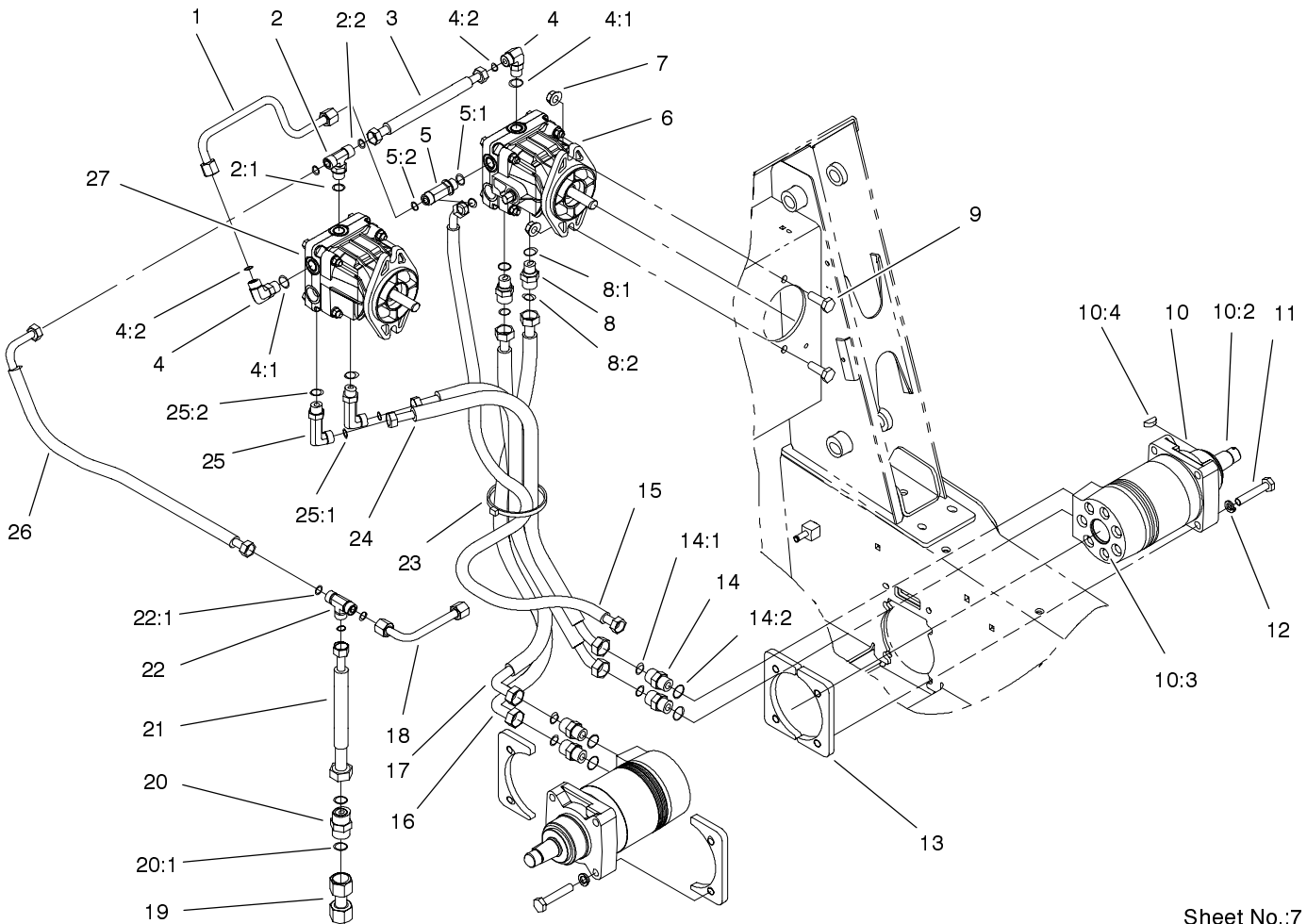
| Ref. No. | Part No. | Qty. | Description |
|----------|------------|------|---------------|
| 26 | 98-8444-03 | 2 | Plate-Brake |
| 27 | 3218-2 | 2 | Nut-Jam |
| 28 | 3274-86 | 2 | Screw-HSH |
| 29 | 98-8448 | 2 | Stop-Brake |
| 30 | 321-5 | 4 | Screw-HH |
| 31 | 3290-378 | 2 | Tie-Cable |
| 32 | 100-1283 | 2 | Cable-Brake |
| 33 | 611792 | 1 | Bolt-Shoulder |
| 34 | 3296-6 | 1 | Nut-Lock, NI |



Sheet No.:6

Loader Tower and Drive Assembly

| Ref. No. | Part No. | Qty. | Description | Ref. No. | Part No. | Qty. | Description |
|----------|-------------|------|------------------|----------|----------|------|-------------|
| 1 | 104-2843 | 1 | Loader Tower ASM | 24 | 323-23 | 2 | Screw-HH |
| 1:2 | 104-2842 | 1 | Decal-Panel | 25 | 56-6590 | 1 | Bolt-Wheel |
| 1:3 | 80-8040 | 1 | Decal-Warning | 26 | 3256-22 | 9 | Washer-Flat |
| 4 | 3296-29 | 1 | Nut-Lock | | | | |
| 5 | 95-3538 | 1 | Spacer-Mounting | | | | |
| 6 | 99-6167 | 1 | Idler Arm ASM | | | | |
| 6:2 | 256-132 | 2 | Bushing-Flange | | | | |
| 7 | 3256-68 | 1 | Washer-Flat | | | | |
| 8 | 322-13 | 1 | Screw-HH | | | | |
| 9 | 100-4207 | 2 | Sheave | | | | |
| 10 | 100-4206 | 2 | Bushing | | | | |
| 10:1 | 100-4208 | 3 | Screw-HH | | | | |
| 11 | 80-6090 | 2 | Key - Pump | | | | |
| 12 | 95-3707 | 1 | Pulley-Idler | | | | |
| 13 | 3296-39 | 4 | Nut-Lock, NI | | | | |
| 14 | 95-3611 | 1 | V-Belt | | | | |
| 15 | 67-7490 | 1 | Key | | | | |
| 16 | 61-3340 | 1 | Bushing | | | | |
| 16:1 | 100-4208 | 3 | Screw-HH | | | | |
| 17 | 61-3330 | 1 | Pulley | | | | |
| 18 | 95-3535 | 1 | Spring-Extention | | | | |
| 19 | 3231-26 | 1 | Screw-CARR | | | | |
| 20 | 100-1271 | 2 | Tube-Spacer | | | | |
| 21 | 32128-52 | 10 | Locknut-Flange | | | | |
| 22 | 100-6123-01 | 2 | Plate-Stiffener | | | | |
| 23 | 100-6116 | 10 | Screw-HHF | | | | |



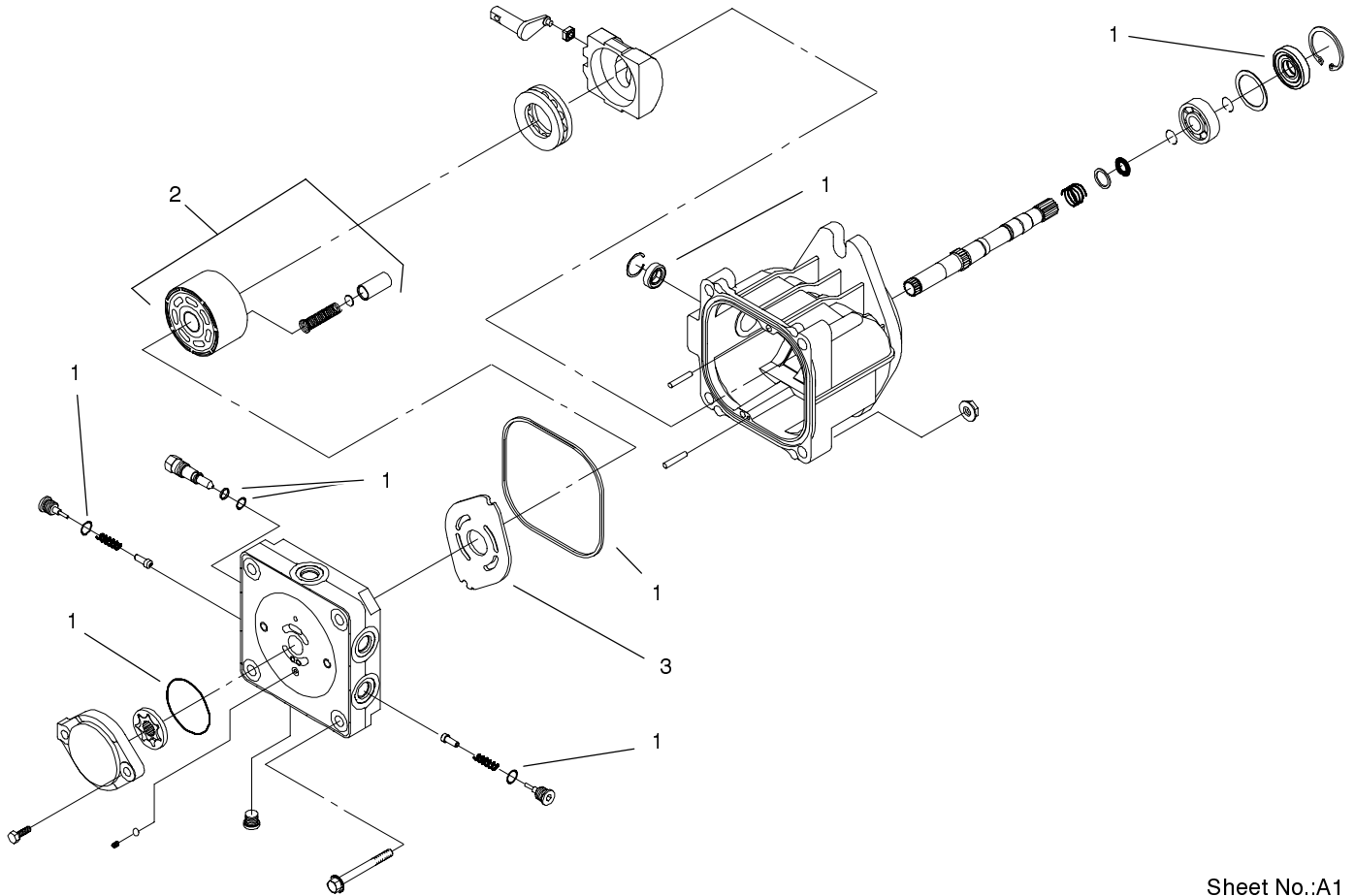
Sheet No.:7

Traction Hydraulics Assembly

| Ref. No. | Part No. | Qty. | Description |
|----------|------------|------|----------------------------|
| 1 | 98-0200 | 1 | HYD Tube ASM |
| 2 | 340-157 | 1 | Fitting-HYD |
| 2:1 | 237-79 | 1 | O-Ring |
| 2:2 | 237-30 | 2 | O-Ring |
| 3 | 95-3664 | 1 | HYD Hose ASM |
| 4 | 340-98 | 2 | Fitting-HYD, 90 |
| 4:1 | 237-79 | 1 | O-Ring |
| 4:2 | 237-30 | 1 | O-Ring |
| 5 | 340-109 | 1 | Fitting-HYD |
| 5:1 | 237-79 | 1 | O-Ring |
| 5:2 | 237-30 | 2 | O-Ring |
| 6 | 98-8432 | 1 | Pump-HYD, LH |
| 7 | 32128-23 | 4 | Nut-HF |
| 8 | 340-155 | 2 | Fitting-HYD |
| 8:1 | 237-79 | 1 | O-Ring |
| 8:2 | 237-151 | 1 | O-Ring |
| 9 | 325-6 | 4 | Screw-HH |
| 10 | 98-2767 | 2 | Motor-Wheel, HYD |
| *10:1 | 100-6131 | 1 | Kit-Seal |
| 10:2 | 99-3090 | 1 | Coupling-Shaft |
| 10:3 | 100-4241 | 7 | Screw-HH |
| 10:4 | 3257-42 | 1 | Key-Woodruff |
| 11 | 325-11 | 8 | Screw-HH |
| 12 | 3253-7 | 8 | Washer-Lock |
| 13 | 98-2763-03 | 4 | Plate-Mounting, Wheelmotor |

| Ref. No. | Part No. | Qty. | Description |
|----------|----------|------|-----------------------|
| 14 | 340-7 | 4 | Adapter |
| 14:1 | 237-65 | 1 | O-Ring |
| 14:2 | 237-80 | 1 | O-Ring |
| 15 | 98-0201 | 1 | HYD Hose ASM |
| 16 | 98-0177 | 1 | HYD Hose ASM |
| 17 | 98-0235 | 1 | HYD Hose ASM |
| 18 | 95-3517 | 1 | HYD Tube ASM |
| 19 | 100-4239 | 1 | HYD Tube ASM |
| 20 | 99-6161 | 1 | Valve-Check, HYD |
| 20:1 | 237-58 | 2 | O-Ring |
| 21 | 95-3551 | 1 | HYD Hose ASM |
| 22 | 340-102 | 1 | Adapter |
| 22:1 | 237-30 | 3 | O-Ring |
| 23 | 3334-945 | 1 | Tie-Cable |
| 24 | 98-0233 | 2 | HYD Hose ASM |
| 25 | 99-6160 | 2 | Fitting-Elbow, 90 DEG |
| 25:1 | 237-30 | 1 | O-Ring |
| 25:2 | 237-79 | 1 | O-Ring |
| 26 | 100-6130 | 1 | HYD Hose ASM |
| 27 | 98-8431 | 1 | Pump-HYD, RH |

* Not illustrated

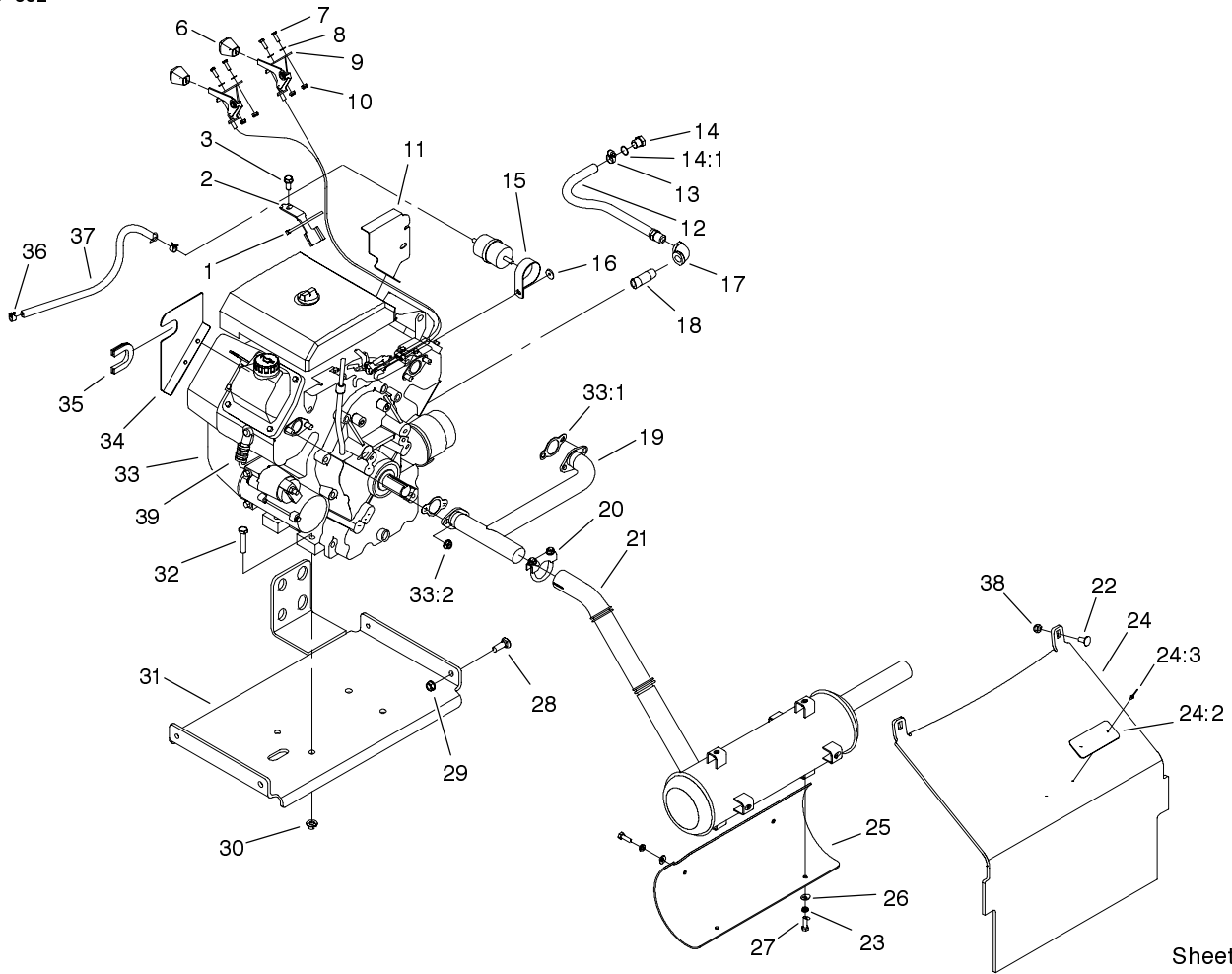


Sheet No.:A1
C-3617

Hydraulic Pump Assemblies 98-8432 & 98-8431

| Ref. No. | Part No. | Qty. | Description |
|----------|----------|------|---------------------|
| 1 | 100-6110 | 1 | Kit-Seal, Overhaul |
| 2 | 100-6111 | 1 | Kit-Block, Cylinder |
| 3 | 100-6112 | 1 | Plate-Valve |

| Ref. No. | Part No. | Qty. | Description |
|----------|----------|------|-------------|
| | | | |
| | | | |
| | | | |
| | | | |

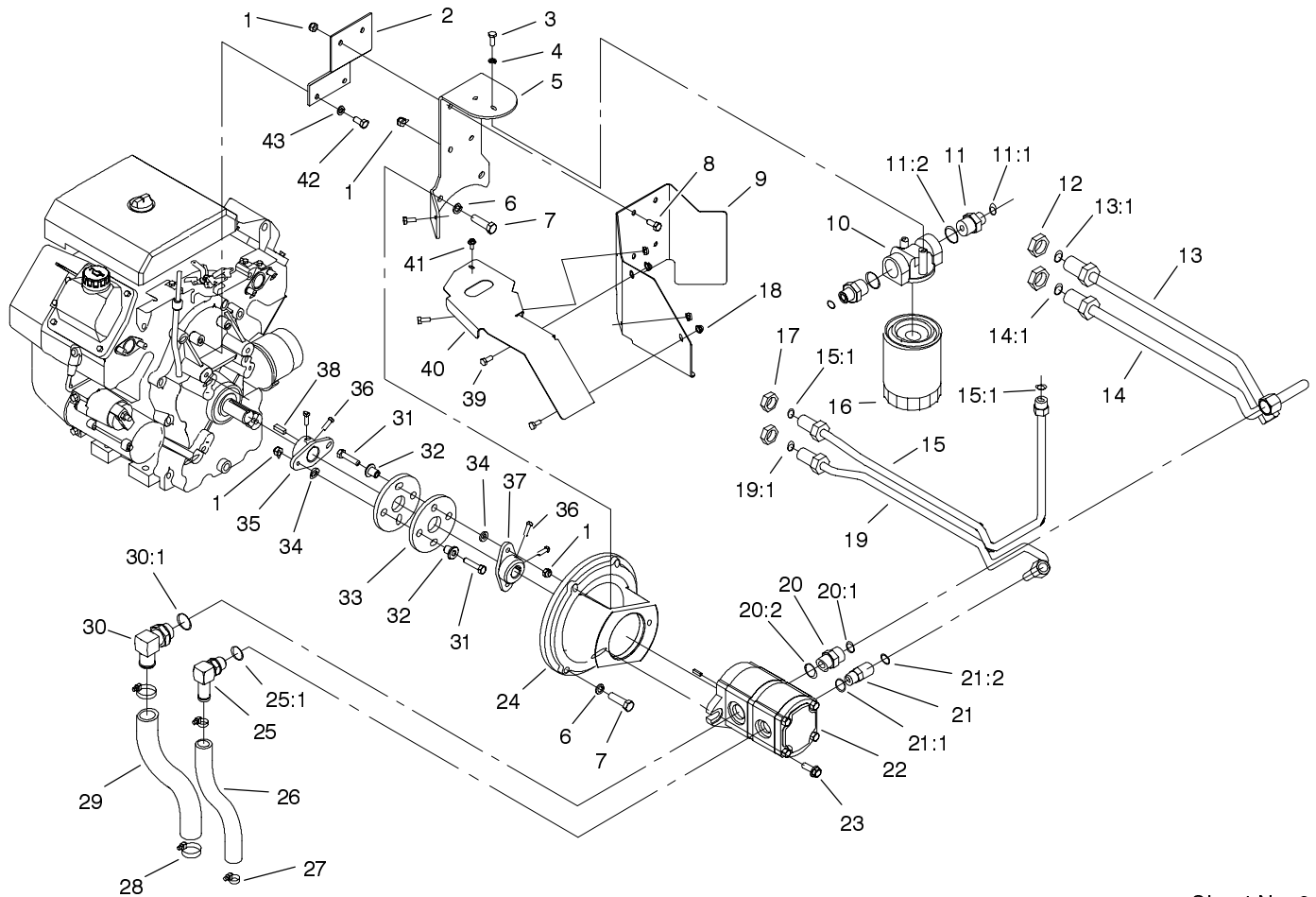


Engine and Mounting Assembly

| Ref. No. | Part No. | Qty. | Description |
|----------|-------------|------|----------------------|
| 1 | 3290-378 | 2 | Tie-Cable |
| 2 | 100-1299-03 | 1 | Guide-Cable |
| 3 | 32144-70 | 1 | Screw-HH |
| 6 | 66-0120 | 2 | Knob |
| 7 | 3290-134 | 4 | Screw |
| 8 | 3256-21 | 4 | Washer-Flat |
| 9 | 99-6173 | 2 | Cable-Throttle |
| 10 | 3296-2 | 4 | Nut-Lock |
| 11 | 100-4227-03 | 1 | Baffle-Engine, LH |
| 12 | 100-1256 | 1 | Oil Hose ASM |
| 13 | 2412-119 | 1 | Clamp-Worm |
| 14 | 353-508 | 1 | Plug |
| 14:1 | 237-42 | 1 | O-Ring |
| 15 | 2412-147 | 1 | Clamp |
| 16 | 3256-61 | 1 | Washer-Flat |
| 17 | 94-9650 | 1 | Elbow-3/8, 90 DEG |
| 18 | 289-42 | 1 | Nipple |
| 19 | 98-2761 | 1 | Manifold-Crossover |
| 20 | 2112-11 | 1 | Clamp-Muffler |
| 21 | 98-2759 | 1 | Muffler-Exhaust |
| 22 | 3230-28 | 2 | Screw-CARR |
| 23 | 3253-3 | 4 | Washer-Lock |
| 24 | 104-9985 | 1 | Heat Shield ASM |
| 24:2 | 80-8290 | 1 | Plate-Surface, Hot |
| 24:3 | 3269-31 | 2 | Rivet-Pop |
| 25 | 98-2762 | 1 | Shield-Heat, Muffler |

| Ref. No. | Part No. | Qty. | Description |
|----------|-------------|------|-----------------------------|
| 26 | 3256-22 | 4 | Washer-Flat |
| 27 | 321-5 | 4 | Screw-HH |
| 28 | 3231-28 | 4 | Screw-CARR |
| 29 | 3296-39 | 4 | Nut-Lock, NI |
| 30 | 32128-21 | 4 | Nut-HF |
| 31 | 99-6175-03 | 1 | Engine Mounting Plate ASM |
| 32 | 323-9 | 4 | Screw-HH |
| ☆33 | | 1 | Engine , Kohler Ch20s-64656 |
| 33:1 | 93-0350 | 2 | Gasket - Exhaust |
| 33:2 | 92-6780 | 4 | Nut-HF |
| 34 | 100-4228-03 | 1 | Baffle-Engine, RH |
| 35 | 100-6103 | 1 | Seal-Strip |
| 36 | 2412-98 | 2 | Clamp |
| 37 | 100-1255 | 1 | Hose-Fuel |
| 38 | 3296-29 | 2 | Nut-Lock |
| 39 | 3290-381 | 1 | Tie-Cable |

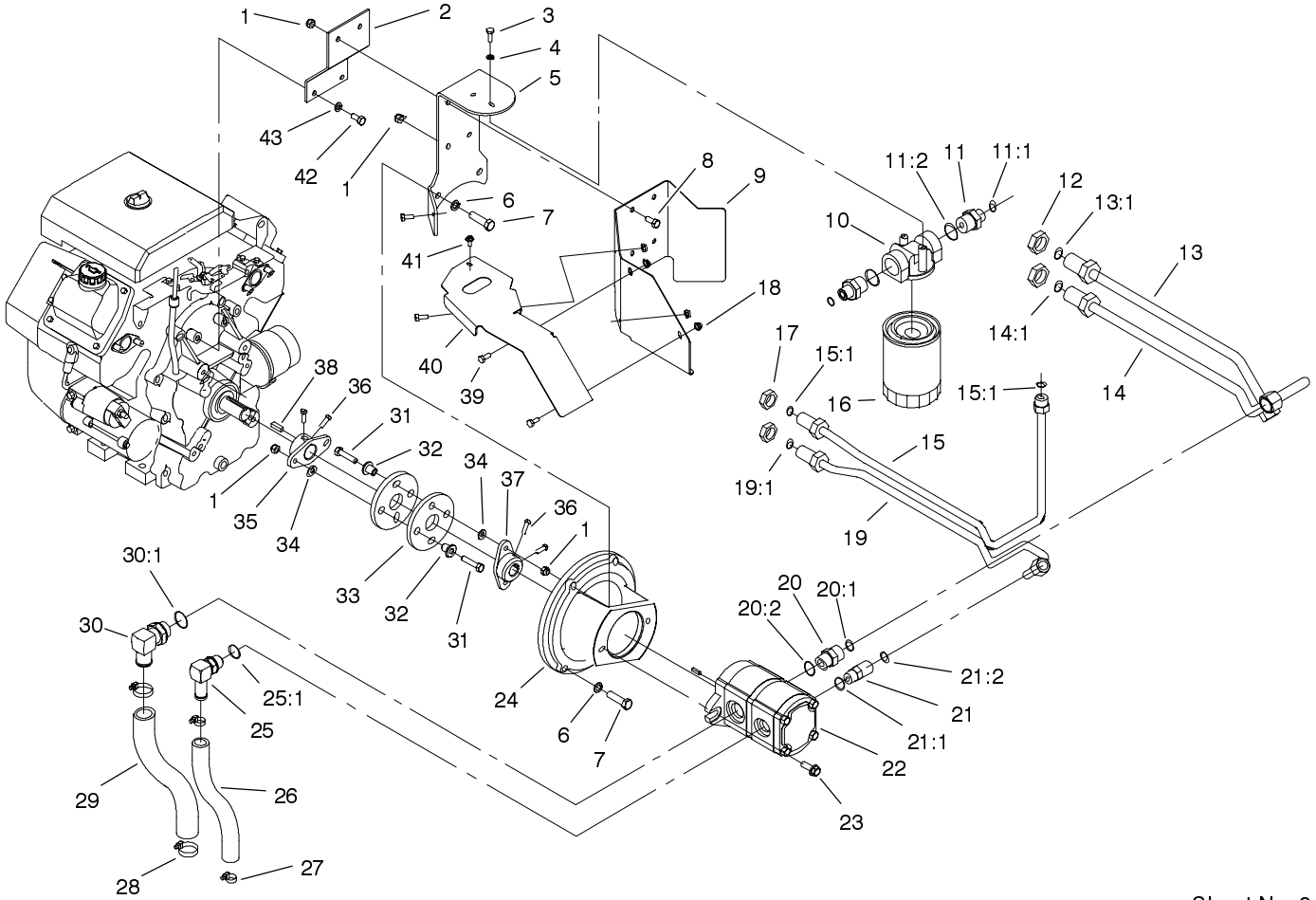
☆ Not serviced



Sheet No.:9

Hydraulic Pump Assembly

| Ref. No. | Part No. | Qty. | Description | Ref. No. | Part No. | Qty. | Description |
|----------|------------|------|-----------------------------|----------|----------|------|----------------------|
| 1 | 3296-29 | 8 | Nut-Lock | 19 | 98-2781 | 1 | HYD Tube ASM |
| 2 | 99-6171-03 | 1 | Bracket-Support, Oil Filter | 19:1 | 237-30 | 1 | O-Ring |
| 3 | 321-4 | 2 | Screw-HH | 20 | 340-7 | 1 | Adapter |
| 4 | 3253-3 | 2 | Washer-Lock | 20:1 | 237-65 | 1 | O-Ring |
| 5 | 99-6172-03 | 1 | Bracket-Support, Oil Filter | 20:2 | 237-80 | 1 | O-Ring |
| 6 | 3253-6 | 4 | Washer-Lock/Sp | 21 | 340-98 | 1 | Fitting-HYD, 90 |
| 7 | 324-7 | 4 | Screw-HH | 21:1 | 237-79 | 1 | O-Ring |
| 8 | 322-3 | 4 | Screw-HH | 21:2 | 237-30 | 1 | O-Ring |
| 9 | 100-6114 | 1 | Shield-Heat, Filter | 22 | 98-2752 | 1 | Pump-Gear, HYD |
| 10 | 92-5821 | 1 | Filter Head ASM | 23 | 66-9300 | 2 | Screw-HF |
| 11 | 100-4240 | 2 | Fitting-Adapter | 24 | 98-2751 | 1 | Mount - Pump |
| 11:1 | 237-30 | 1 | O-Ring | 25 | 87-8170 | 1 | Fitting |
| 11:2 | 237-81 | 1 | O-Ring | 25:1 | 237-80 | 1 | O-Ring |
| 12 | 340-74 | 2 | Locknut-Bulkhead | 26 | 98-0156 | 1 | Hose-HYD |
| 13 | 98-2782 | 1 | HYD Tube ASM | 27 | 2412-129 | 2 | Clamp-Hose |
| 13:1 | 237-65 | 1 | O-Ring | 28 | 2412-34 | 2 | Clamp-Hose |
| 14 | 98-2783 | 1 | HYD Tube ASM | 29 | 98-0240 | 1 | Hose-HYD |
| 14:1 | 237-65 | 1 | O-Ring | 30 | 100-4202 | 1 | Fitting-90 DEG, Hose |
| 15 | 104-2847 | 1 | HYD Tube ASM | 30:1 | 237-81 | 1 | O-Ring |
| 15:1 | 237-30 | 2 | O-Ring | 31 | 322-7 | 4 | Screw-HH |
| 16 | 86-3010 | 2 | Filter-Oil, Transmission | 32 | 71-4411 | 4 | Spacer |
| 17 | 340-127 | 2 | Nut-Bulkhead | 33 | 44-2230 | 2 | Coupling-Rubber |
| 18 | 3296-16 | 4 | Nut-Lock, NI | 34 | 3256-23 | 4 | Washer-Flat |
| | | | | 35 | 27-1960 | 1 | Hub-Engine |
| | | | | 36 | 3241-6 | 4 | Screw-SQH |
| | | | | 37 | 49-9600 | 1 | Hub-Pump |

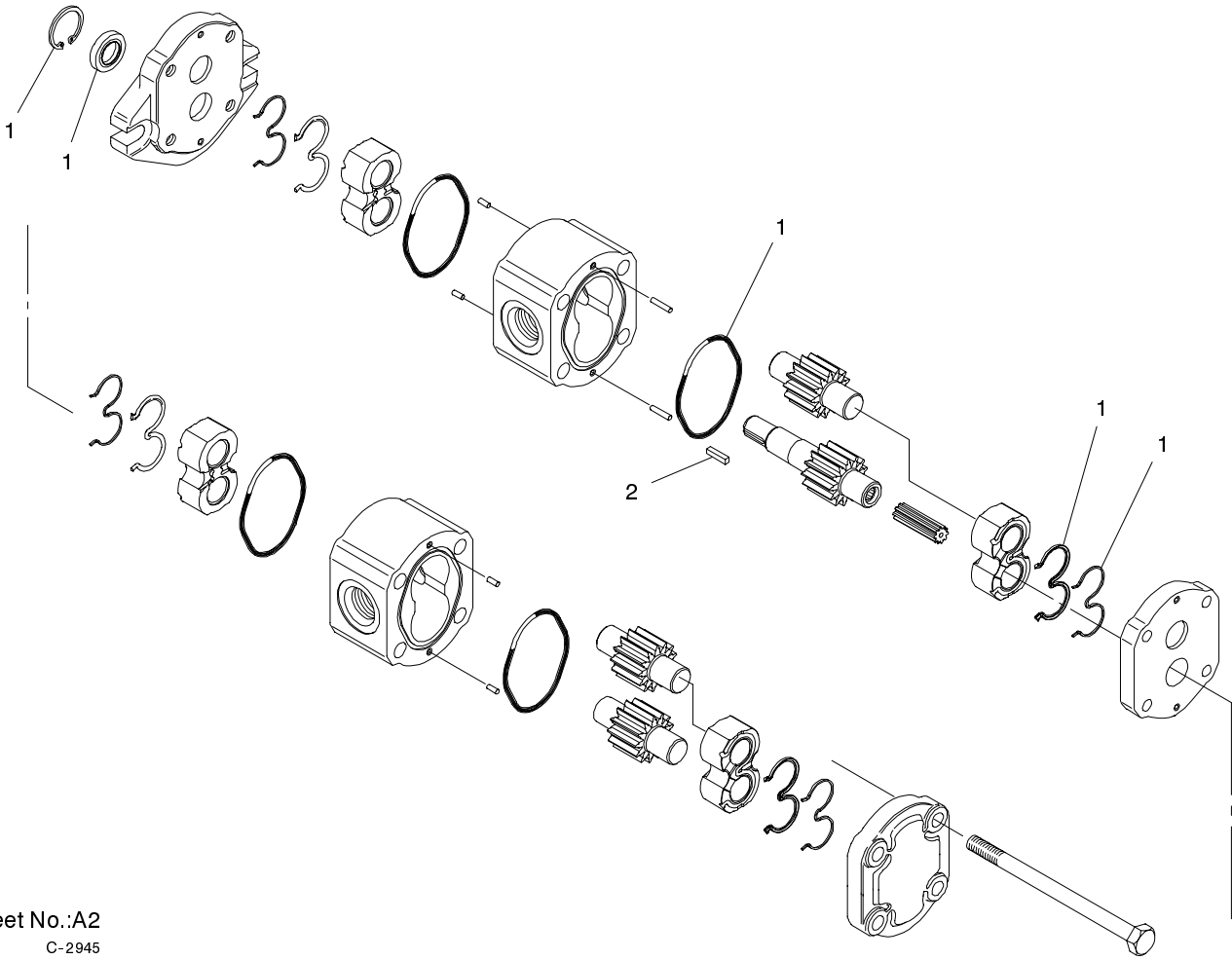


Sheet No.:9

Hydraulic Pump Assembly (Continued)

| Ref. No. | Part No. | Qty. | Description |
|----------|-----------|------|-------------|
| 38 | 10-7070 | 1 | Key-Square |
| 39 | 321-39 | 4 | Screw-HH |
| 40 | 104-9960 | 1 | Shield-Heat |
| 41 | 12-5450 | 1 | Screw |
| 42 | 33114-020 | 2 | Screw-HH |
| 43 | 3253-4 | 2 | Washer-Lock |

| Ref. No. | Part No. | Qty. | Description |
|----------|----------|------|-------------|
|----------|----------|------|-------------|

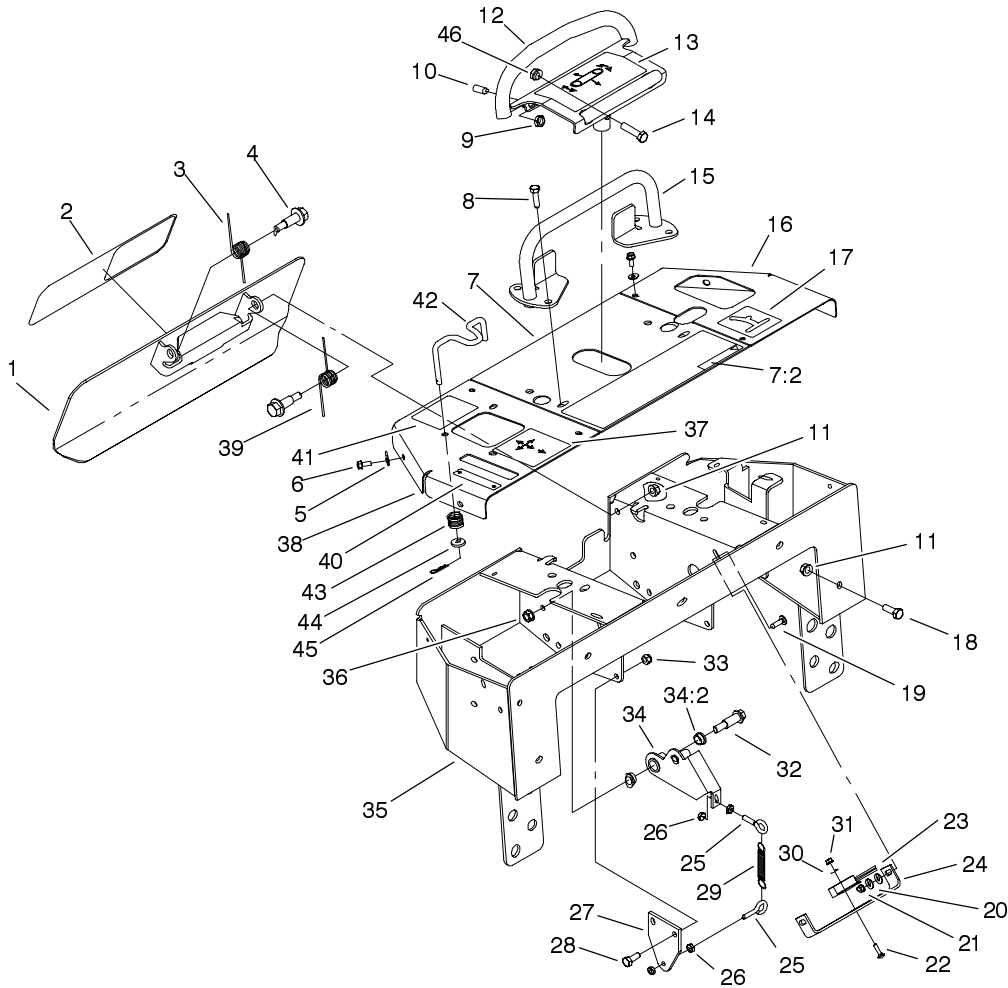


Sheet No.:A2
C-2945

Hydraulic Gear Pump Assembly No. 98-2752

| Ref. No. | Part No. | Qty. | Description |
|----------|----------|------|----------------|
| 1 | 100-4237 | 1 | Kit-Seal, Pump |
| 2 | 100-4238 | 1 | Key-Square |

| Ref. No. | Part No. | Qty. | Description |
|----------|----------|------|-------------|
| | | | |
| | | | |
| | | | |
| | | | |

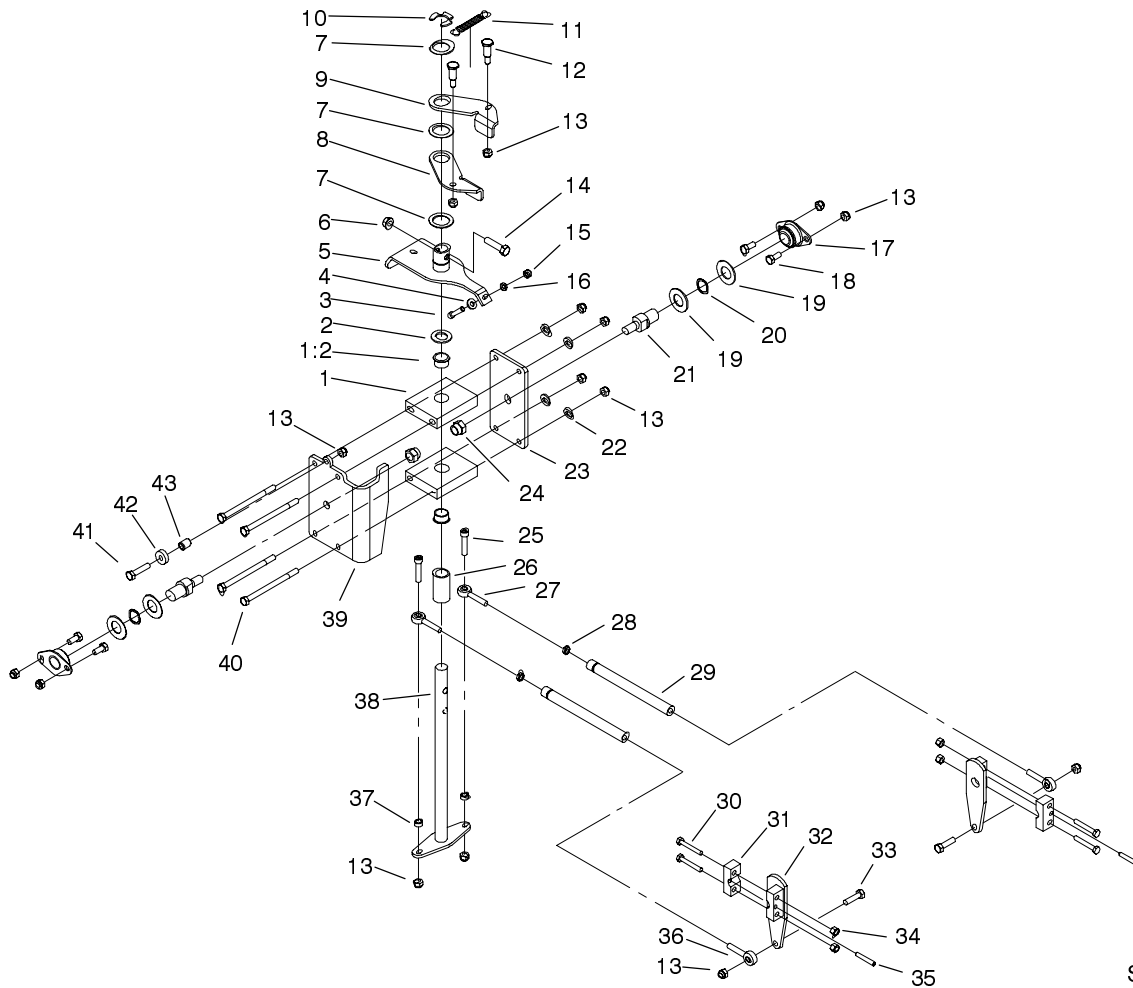


Sheet No.:10

Control Panel Assembly

| Ref. No. | Part No. | Qty. | Description |
|----------|-------------|------|----------------------|
| 1 | 98-8417-03 | 1 | Reverse Plate ASM |
| 2 | 105-1217 | 1 | Decal-Toro |
| 3 | 98-8425 | 1 | Spring-Torsion, LH |
| 4 | 62-1330 | 2 | Bolt-Shoulder |
| 5 | 3256-16 | 8 | Washer-Flat |
| 6 | 32144-85 | 8 | Screw-HH |
| 7 | 100-6144 | 1 | Center Panel ASM |
| 7:2 | 100-6140 | 1 | Decal-Danger |
| 8 | 322-16 | 4 | Screw-HH |
| 9 | 3218-3 | 2 | Nut-Jam |
| 10 | 3247-6 | 2 | Screw-Set, Socket Hd |
| 11 | 3296-39 | 7 | Nut-Lock, NI |
| 12 | 104-9970-03 | 1 | Control Handle ASM |
| 13 | 100-6138 | 1 | Decal-Traction |
| 14 | 32144-102 | 1 | Screw-HWH |
| 15 | 98-8400-03 | 1 | Reference Bar ASM |
| 16 | 98-8428-01 | 1 | Panel-LH |
| 17 | 100-6136 | 1 | Decal-Auxiliary |
| 18 | 323-7 | 5 | Screw-HH |
| 19 | 3229-1 | 2 | Screw-CARR |
| 20 | 3256-22 | 4 | Washer-Flat |
| 21 | 32149-2 | 2 | Nut |
| 22 | 3229-20 | 2 | Screw-CARR |
| 23 | 100-1270 | 1 | Switch-Proximity |
| 24 | 100-1263 | 1 | Plate-Switch |
| 25 | 71-2870 | 2 | Bolt-Eye |

| Ref. No. | Part No. | Qty. | Description |
|----------|-------------|------|--------------------------------|
| 26 | 3217-5 | 4 | Nut-Hex |
| 27 | 100-1261-03 | 1 | Bracket-Spring |
| 28 | 322-4 | 2 | Screw-HH |
| 29 | 105-1210 | 1 | Spring-Detent |
| 30 | 3256-51 | 2 | Washer-Flat |
| 31 | 32149-7 | 2 | Nut-Keps |
| 32 | 66-0560 | 1 | Bolt-Shoulder |
| 33 | 3296-29 | 2 | Nut-Lock |
| 34 | 100-4203 | 1 | Neutral Centering Lever ASM |
| 34:2 | 256-156 | 2 | Bushing-Flange |
| 35 | 95-3540-01 | 1 | Control Panel ASM |
| 36 | 3296-6 | 1 | Nut-Lock, NI |
| 37 | 104-2837 | 1 | Decal-Loader |
| 38 | 104-2836-01 | 1 | RH Panel ASM |
| 39 | 98-8424 | 1 | Spring-Torsion, RH |
| 40 | 104-2838 | 1 | Decal-Brake |
| 41 | 104-2844 | 1 | Decal-Interlock |
| 42 | 104-2833 | 1 | Rod-Interlock |
| 43 | 85-6750 | 1 | Spring-Control |
| 44 | 88-7200 | 1 | Washer-Flat |
| 45 | 3290-307 | 1 | Pin-Hair |
| 46 | 32128-43 | 1 | Nut-Flange |

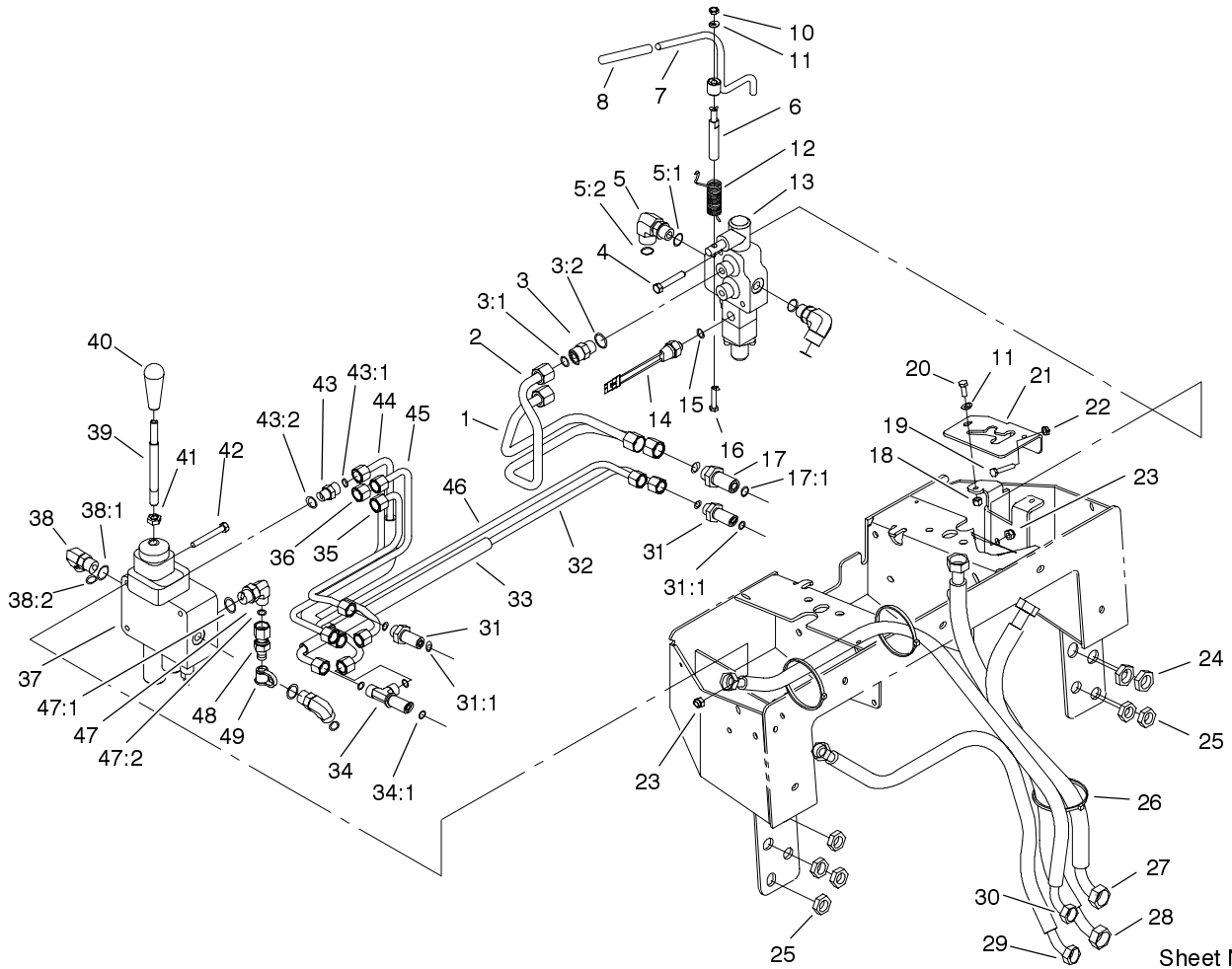


Sheet No.:11

Traction Control Assembly

| Ref. No. | Part No. | Qty. | Description |
|----------|-------------|------|---------------------------|
| 1 | 104-9972 | 2 | Bearing Support Block ASM |
| 1:2 | 256-252 | 1 | Bearing-Flange |
| 2 | 257-8 | 1 | Washer-Thrust |
| 3 | 3274-51 | 1 | Screw-HSH |
| 4 | 3256-22 | 1 | Washer-Flat |
| 5 | 104-9968 | 1 | Pivot Lever ASM |
| 6 | 3296-39 | 1 | Nut-Lock, NI |
| 7 | 3256-42 | 3 | Washer-Flat |
| 8 | 98-8407 | 1 | Lever-Return, RH |
| 9 | 98-8408 | 1 | Lever-Return, LH |
| 10 | 32151-91 | 1 | Ring-Retaining |
| 11 | 105-1210 | 1 | Spring-Detent |
| 12 | 63-2650 | 2 | Screw-Shoulder |
| 13 | 3296-29 | 15 | Nut-Lock |
| 14 | 323-8 | 1 | Screw-HH |
| 15 | 3217-5 | 1 | Nut-Hex |
| 16 | 3253-3 | 1 | Washer-Lock |
| 17 | 68-2970 | 2 | Bushing |
| 18 | 322-3 | 4 | Screw-HH |
| 19 | 3256-39 | 4 | Washer-Flat |
| 20 | 95-3703 | 2 | Washer-Spring, Wave |
| 21 | 95-3684 | 2 | Shaft-Arm, Pivot |
| 22 | 3256-23 | 4 | Washer-Flat |
| 23 | 104-9975-03 | 1 | Bracket-Pivot, LH |
| 24 | 3296-23 | 2 | Nut-Lock, NI |

| Ref. No. | Part No. | Qty. | Description |
|----------|-------------|------|------------------------|
| 25 | 3274-83 | 2 | Screw-HSH |
| 26 | 104-9974 | 1 | Spacer-Pivot, Rod |
| 27 | 2411-52 | 2 | Bearing - Rod End, RH |
| 28 | 3220-2 | 2 | Nut |
| 29 | 95-3711 | 2 | Rod-Linkage |
| 30 | 321-10 | 4 | Screw-HH |
| 31 | 98-8434 | 2 | Clamp-Traction |
| 32 | 98-8433 | 2 | Pump Lever ASM |
| 33 | 322-6 | 2 | Screw-HH |
| 34 | 3296-8 | 4 | Nut-Lock NI |
| 35 | 100-6148 | 2 | Pin-Spring, Metric |
| 36 | 2411-53 | 2 | Bearing - Rod End, LH |
| 37 | 92-3133 | 2 | Spacer-Lever, Traction |
| 38 | 98-8411 | 1 | Drive Rod ASM |
| 39 | 104-9976-03 | 1 | Bracket-Pivot, RH |
| 40 | 322-38 | 4 | Screw-HH |
| 41 | 322-7 | 1 | Screw-HH |
| 42 | 251-259 | 1 | Bearing |
| 43 | 88-7450 | 1 | Spacer-Lever, Control |

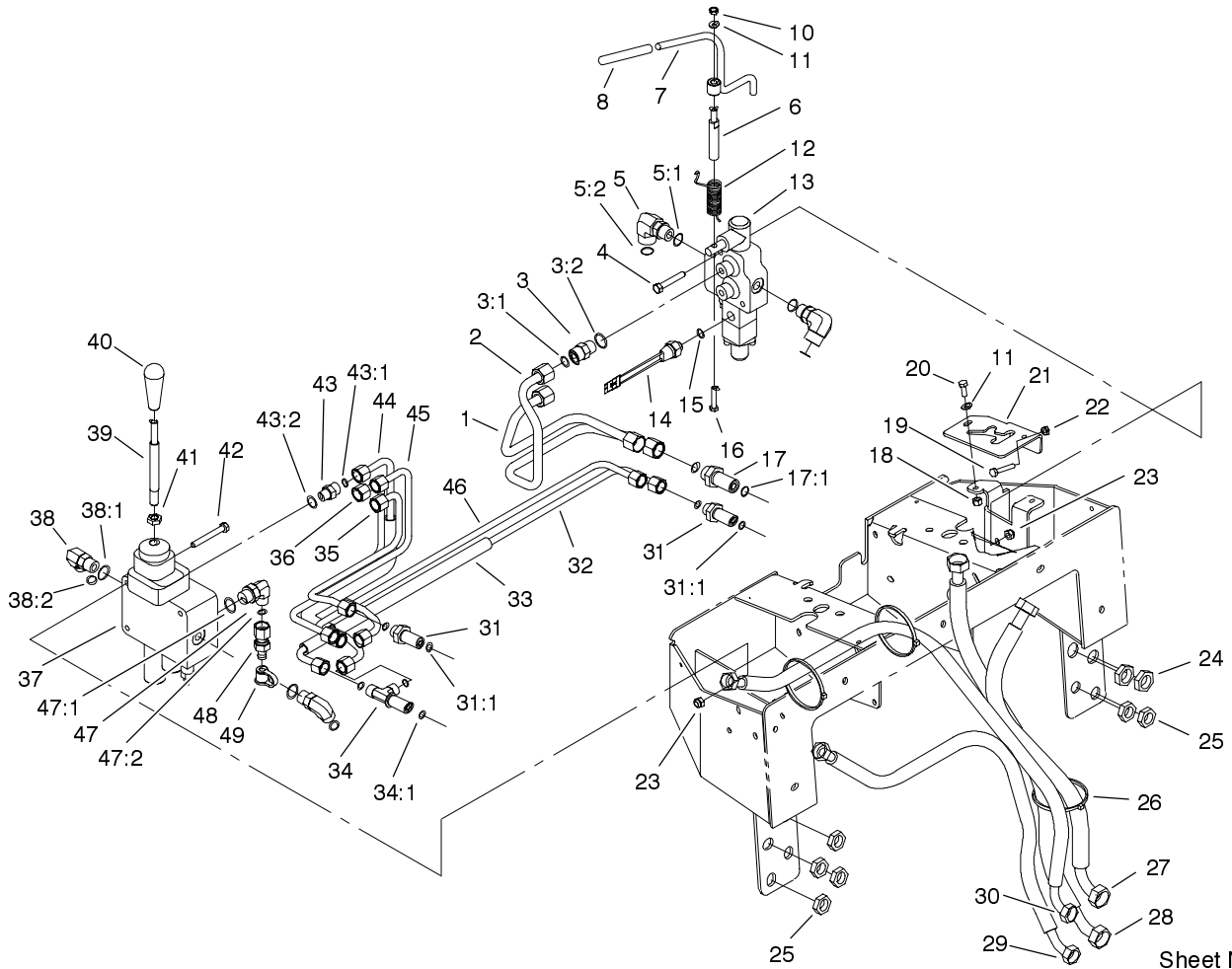


Sheet No.:12

Principal Hydraulics Assembly

| Ref. No. | Part No. | Qty. | Description |
|----------|-------------|------|---------------------|
| 1 | 98-2791 | 1 | HYD Tube ASM |
| 2 | 98-2790 | 1 | HYD Tube ASM |
| 3 | 340-4 | 2 | Adapter |
| 3:1 | 237-30 | 1 | O-Ring |
| 3:2 | 237-79 | 1 | O-Ring |
| 4 | 322-11 | 2 | Screw-HH |
| 5 | 340-153 | 2 | Fitting-HYD |
| 5:1 | 237-79 | 1 | O-Ring |
| 5:2 | 237-151 | 1 | O-Ring |
| 6 | 104-2827 | 1 | Spacer-Hiflo |
| 7 | 100-4246 | 1 | Auxiliary Lever ASM |
| 8 | 92-6798 | 1 | Cap-Rod, Tilt |
| 10 | 3296-42 | 1 | Nut-Lock NI |
| 11 | 3256-16 | 3 | Washer-Flat |
| 12 | 100-6129 | 1 | Spring-Torsion |
| 13 | 104-2831 | 1 | Valve-1 Spool |
| 14 | 72-4310 | 1 | Switch |
| 15 | 237-42 | 1 | O-Ring |
| 16 | 48-7740 | 1 | Screw |
| 17 | 340-161 | 2 | Fitting-Bulkhead |
| 17:1 | 237-30 | 2 | O-Ring |
| 18 | 3296-8 | 2 | Nut-Lock NI |
| 19 | 321-9 | 1 | Screw-HH |
| 20 | 321-4 | 2 | Screw-HH |
| 21 | 100-6126-01 | 1 | Auxiliary Stop ASM |
| 22 | 3218-1 | 1 | Nut-Jam |

| Ref. No. | Part No. | Qty. | Description |
|----------|----------|------|----------------------------|
| 23 | 3296-29 | 5 | Nut-Lock |
| 24 | 340-127 | 2 | Nut-Bulkhead |
| 25 | 340-70 | 6 | Locknut-Bulkhead |
| 26 | 3290-378 | 3 | Tie-Cable |
| 27 | 104-9961 | 1 | HYD Hose ASM |
| 28 | 98-0203 | 1 | HYD Hose ASM |
| 29 | 95-3737 | 1 | HYD Hose ASM |
| 30 | 95-3738 | 1 | HYD Hose ASM |
| 31 | 340-71 | 4 | Fitting-Straight, Bulkhead |
| 31:1 | 237-22 | 2 | O-Ring |
| 32 | 98-2786 | 1 | HYD Tube ASM |
| 33 | 100-1287 | 2 | Conduit-Convolutod |
| 34 | 340-68 | 2 | Fitting-Tee, Bulkhead |
| 34:1 | 237-22 | 3 | O-Ring |
| 35 | 98-2789 | 1 | HYD Tube ASM |
| 36 | 98-2785 | 1 | HYD Tube ASM |
| 37 | 95-3536 | 1 | Valve-2 Spool |
| 38 | 340-98 | 2 | Fitting-HYD, 90 |
| 38:1 | 237-79 | 1 | O-Ring |
| 38:2 | 237-30 | 1 | O-Ring |
| 39 | 95-3569 | 1 | Shaft-Handle, Lift/Tilt |
| 40 | 98-0152 | 1 | Knob-Tapered |
| 41 | 51-2070 | 1 | Nut |
| 42 | 322-12 | 3 | Screw-HH |
| 43 | 340-2 | 4 | Adapter |

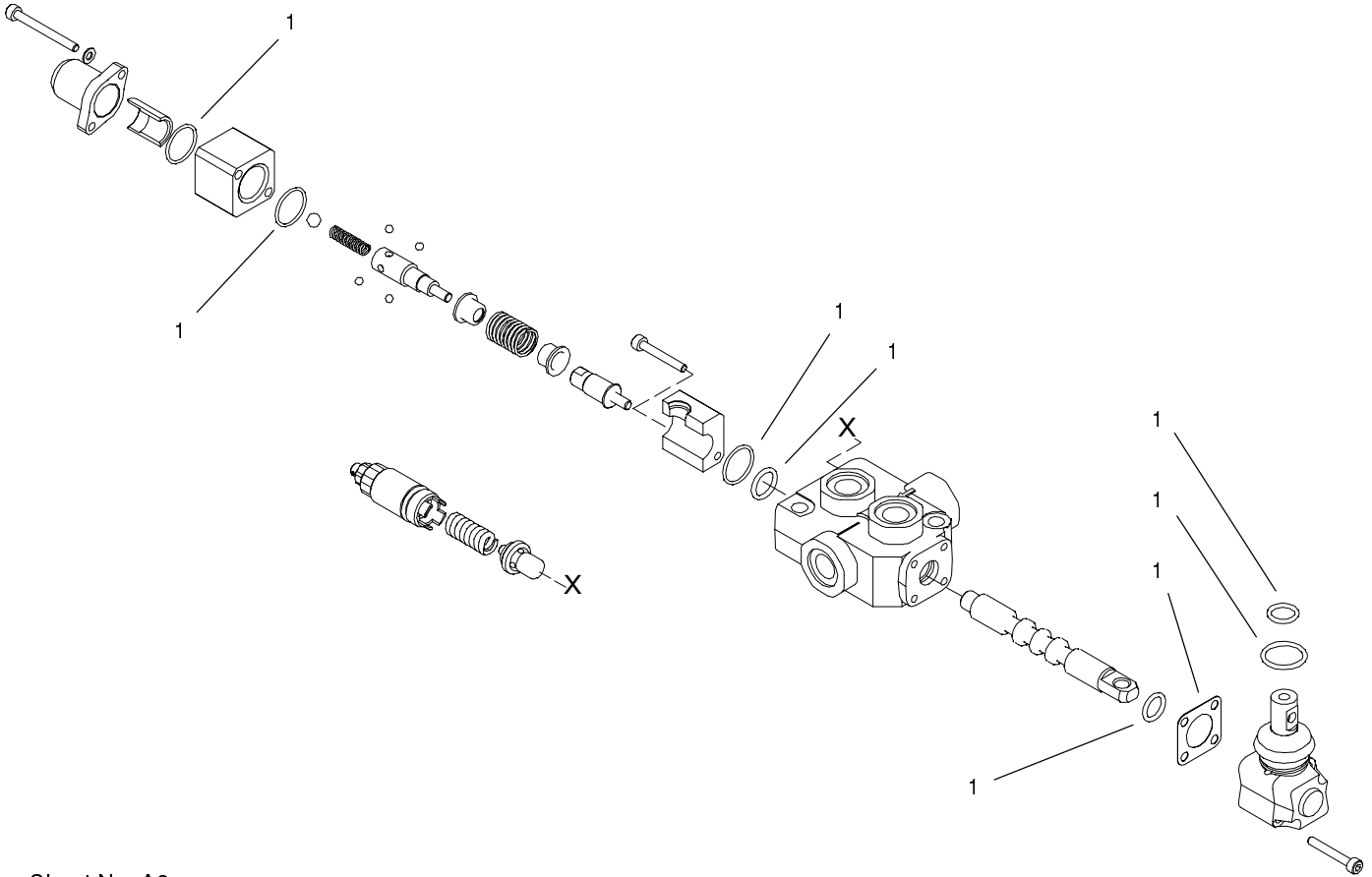


Sheet No.:12

Principal Hydraulics Assembly (Continued)

| Ref. No. | Part No. | Qty. | Description |
|----------|----------|------|---------------------|
| 43:1 | 237-22 | 1 | O-Ring |
| 43:2 | 237-42 | 1 | O-Ring |
| 44 | 98-2784 | 1 | HYD Tube ASM |
| 45 | 98-2788 | 1 | HYD Tube ASM |
| 46 | 98-2787 | 1 | HYD Tube ASM |
| 47 | 340-18 | 1 | Fitting-HYD, 90 DEG |
| 47:1 | 237-79 | 1 | O-Ring |
| 47:2 | 237-22 | 1 | O-Ring |
| 48 | 86-5480 | 1 | Nipple-Test |
| 49 | 354-79 | 1 | Cap-Fitting, Yellow |

| Ref. No. | Part No. | Qty. | Description |
|----------|----------|------|-------------|
| | | | |
| | | | |
| | | | |
| | | | |
| | | | |
| | | | |
| | | | |
| | | | |
| | | | |
| | | | |
| | | | |

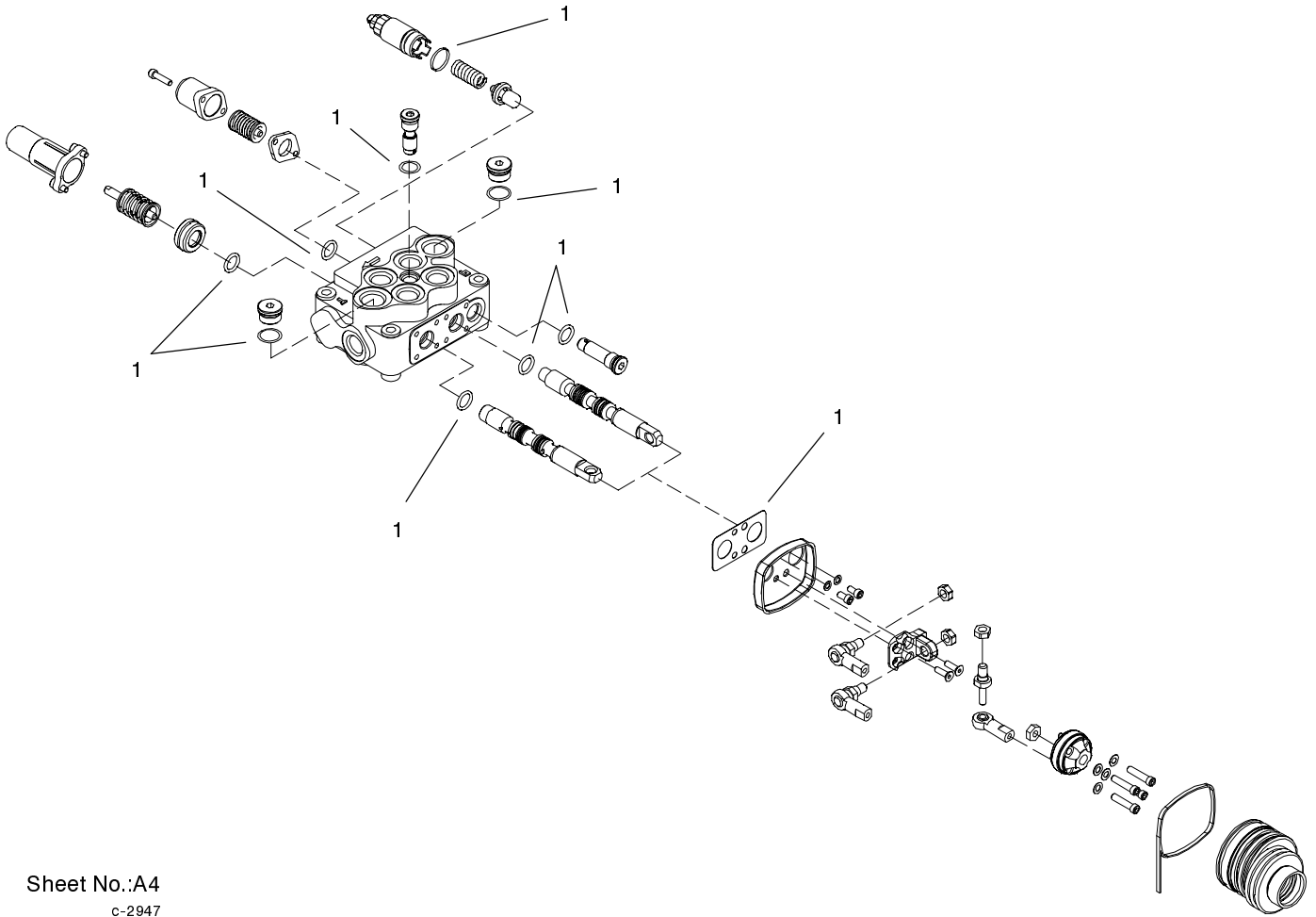


Sheet No.:A3
C-2946

One Spool Valve Assembly No. 104-2831

| Ref. No. | Part No. | Qty. | Description |
|----------|----------|------|-------------|
| 1 | 99-4391 | 1 | Kit-Seal |

| Ref. No. | Part No. | Qty. | Description |
|----------|----------|------|-------------|
|----------|----------|------|-------------|

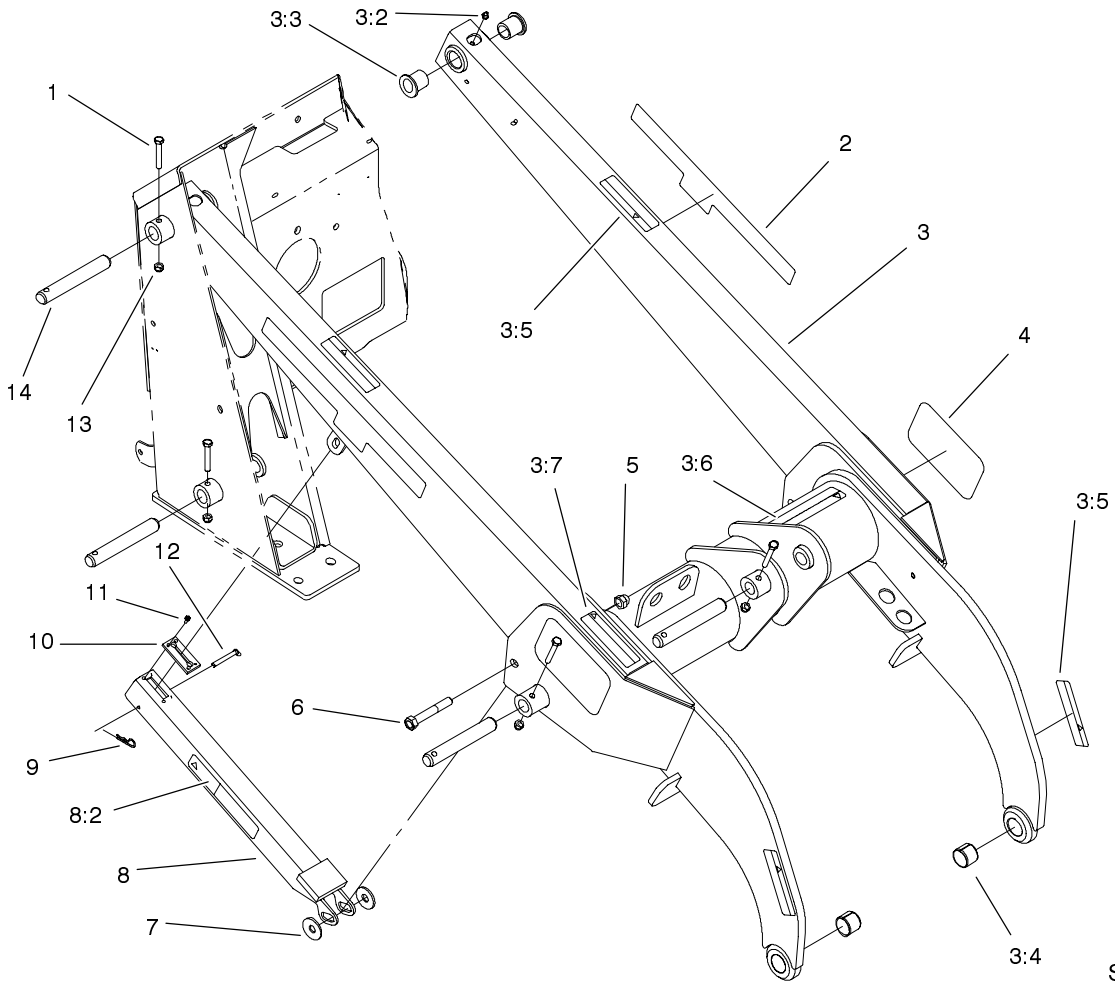


Sheet No.:A4
c-2947

Two Spool Valve Assembly No. 95-3536

| Ref. No. | Part No. | Qty. | Description |
|----------|----------|------|-------------|
| 1 | 100-4249 | 1 | Kit-Seal |

| Ref. No. | Part No. | Qty. | Description |
|----------|----------|------|-------------|
|----------|----------|------|-------------|

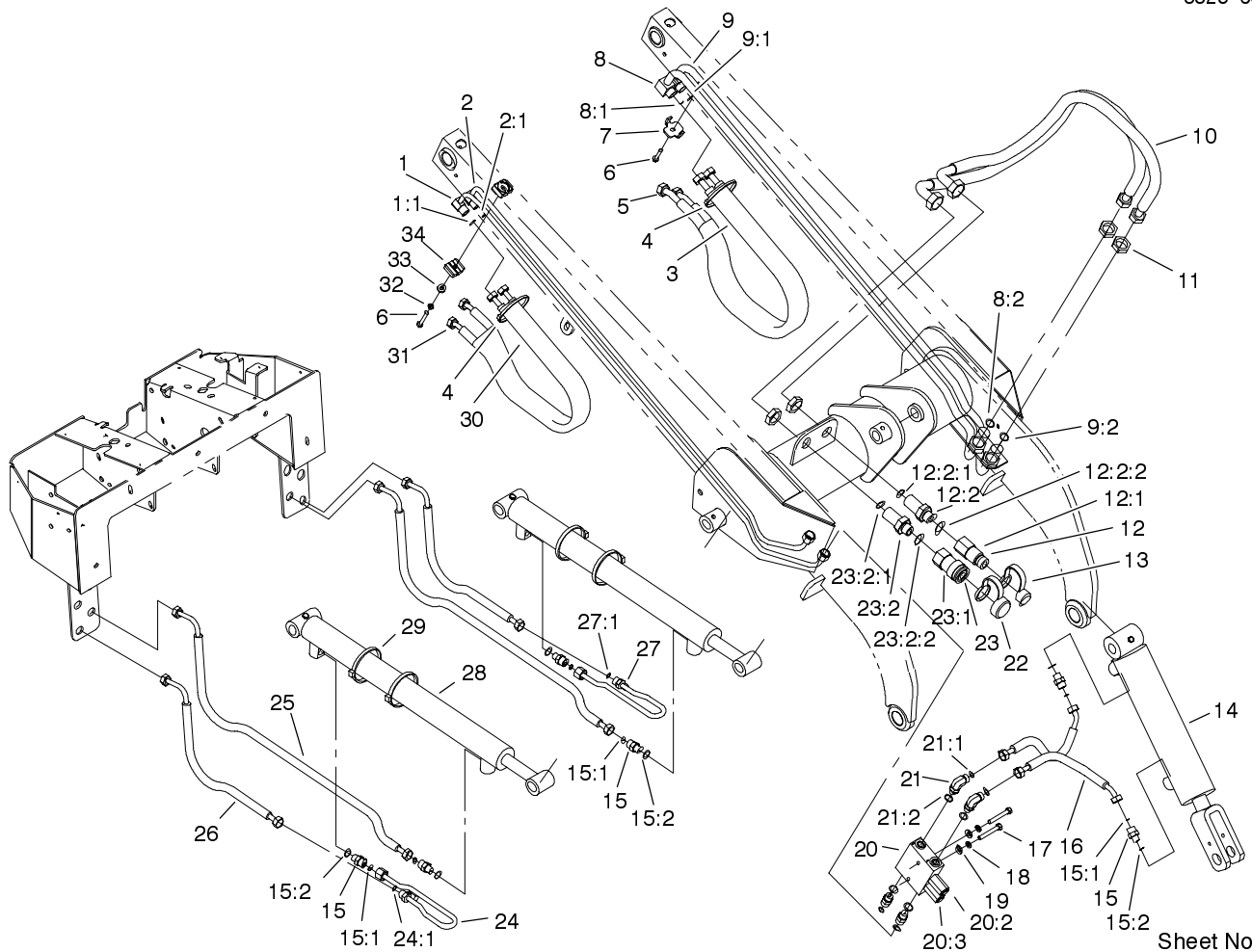


Sheet No.:13

Loader Arm Assembly

| Ref. No. | Part No. | Qty. | Description |
|----------|-----------|------|------------------|
| 1 | 322-10 | 7 | Screw-HH |
| 2 | 100-6133 | 2 | Decal-Dingo Tx |
| 3 | 100-6145 | 1 | Loader Arm ASM |
| 3:2 | 302-5 | 2 | Fitting-Grease |
| 3:3 | 95-3577 | 4 | Bushing |
| 3:4 | 98-4871 | 2 | Bushing-Tension |
| 3:5 | 100-6141 | 4 | Decal-Pinch |
| 3:6 | 100-6132 | 1 | Decal-Caution |
| 3:7 | 100-6101 | 1 | Decal-Caution |
| 4 | 105-1217 | 2 | Decal-Toro |
| 5 | 3296-23 | 1 | Nut-Lock, NI |
| 6 | 325-13 | 1 | Screw-HH |
| 7 | 68-1440 | 2 | Washer-Rubber |
| 8 | 100-6105 | 1 | Locking Arm ASM |
| 8:2 | 100-6135 | 1 | Decal-Danger |
| 9 | 3290-250 | 1 | Pin-Hair, Cotter |
| 10 | 98-0083 | 1 | Stop-Rubber |
| 11 | 32144-107 | 4 | Screw |
| 12 | 283-48 | 1 | Pin-Clevis |
| 13 | 3296-29 | 7 | Nut-Lock |
| 14 | 104-2849 | 7 | Pin-Locking |

| Ref. No. | Part No. | Qty. | Description |
|----------|----------|------|-------------|
| | | | |
| | | | |
| | | | |
| | | | |
| | | | |
| | | | |
| | | | |
| | | | |
| | | | |
| | | | |
| | | | |



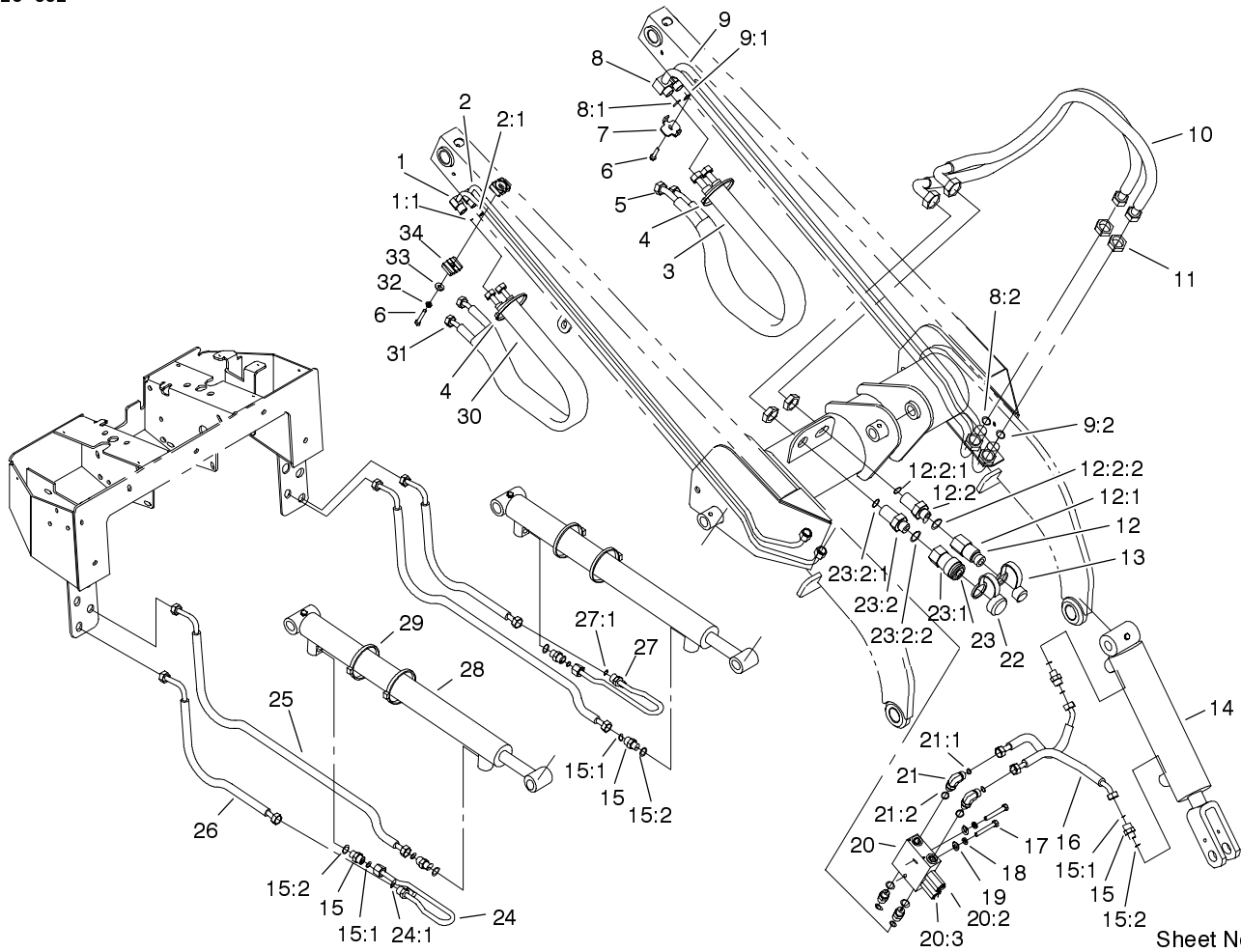
Sheet No.:14

Loader Arm Hydraulic Assembly

| Ref. No. | Part No. | Qty. | Description |
|----------|------------|------|---------------------------|
| 1 | 104-9965 | 1 | HYD Tube ASM |
| 1:1 | 237-22 | 1 | O-Ring |
| 2 | 104-9964 | 1 | HYD Tube ASM |
| 2:1 | 237-22 | 1 | O-Ring |
| 3 | 100-6128 | 1 | Sleeve-Protective |
| 4 | 3290-378 | 2 | Tie-Cable |
| 5 | 98-0242 | 2 | HYD Hose ASM |
| 6 | 32144-110 | 2 | Screw-HWH |
| 7 | 98-0237-03 | 1 | Plate-Clamp, Tube |
| 8 | 104-9962 | 1 | HYD Tube ASM |
| 8:1 | 237-30 | 1 | O-Ring |
| 8:2 | 237-65 | 1 | O-Ring |
| 9 | 104-9963 | 1 | HYD Tube ASM |
| 9:1 | 237-30 | 1 | O-Ring |
| 9:2 | 237-65 | 1 | O-Ring |
| 10 | 99-6193 | 2 | HYD Hose ASM |
| 11 | 340-74 | 4 | Locknut-Bulkhead |
| 12 | 100-4748 | 1 | Bulkhead Nipple ASM |
| 12:1 | 96-1276 | 1 | Nipple-Face, Flush |
| 12:2 | 100-4236 | 1 | Fitting-Adapter, Bulkhead |
| 12:2:1 | 237-65 | 1 | O-Ring |
| 12:2:2 | 237-80 | 1 | O-Ring |
| 13 | 100-8815 | 1 | Cap-Dust, Nipple |
| 14 | 95-3578 | 1 | Cylinder-Tilt |
| 15 | 340-2 | 8 | Adapter |

| Ref. No. | Part No. | Qty. | Description |
|----------|----------|------|---------------------------|
| 15:1 | 237-22 | 2 | O-Ring |
| 15:2 | 237-42 | 2 | O-Ring |
| 16 | 98-0207 | 2 | HYD Hose ASM |
| 17 | 322-10 | 2 | Screw-HH |
| 18 | 3253-4 | 2 | Washer-Lock |
| 19 | 3256-23 | 2 | Washer-Flat |
| 20 | 100-4205 | 1 | Valve-Relief, Crossover |
| *20:1 | 100-4219 | 2 | Kit-Seal, Buma |
| 20:2 | 100-4220 | 1 | Cartridge-Relief |
| 20:3 | 100-4221 | 1 | Cartridge-Relief |
| 21 | 340-77 | 2 | Fitting-90 |
| 21:1 | 237-22 | 1 | O-Ring |
| 21:2 | 237-42 | 1 | O-Ring |
| 22 | 100-8816 | 1 | Cap-Dust, Coupler |
| 23 | 100-4747 | 1 | Bulkhead Coupler ASM |
| 23:1 | 96-1275 | 1 | Coupler-Face, Flush |
| 23:2 | 100-4236 | 1 | Fitting-Adapter, Bulkhead |
| 23:2:1 | 237-65 | 1 | O-Ring |
| 23:2:2 | 237-80 | 1 | O-Ring |
| 24 | 100-1258 | 1 | HYD Tube ASM |
| 24:1 | 237-22 | 1 | O-Ring |
| 25 | 98-0217 | 2 | HYD Hose ASM |
| 26 | 98-0216 | 2 | HYD Hose ASM |

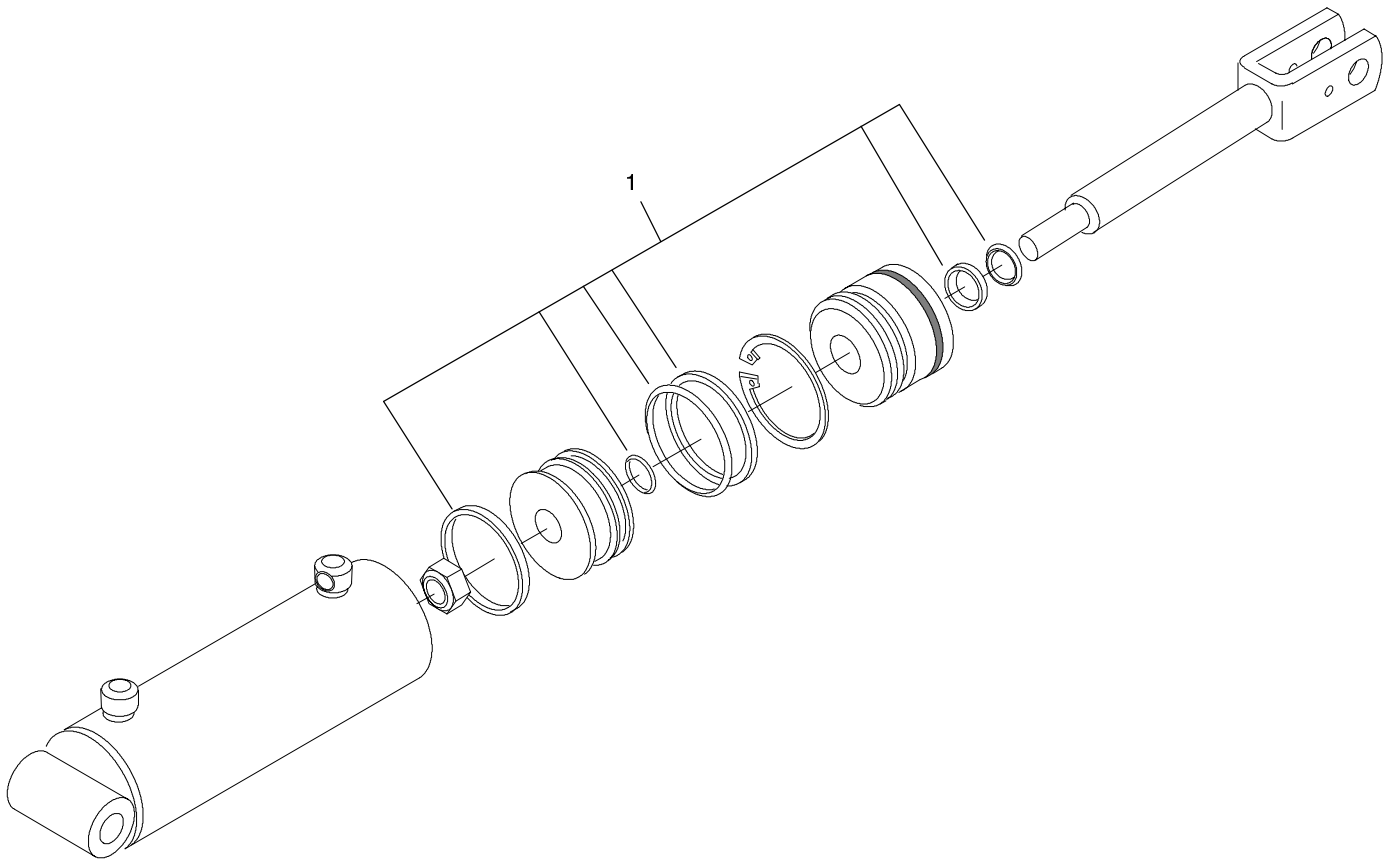
* Not illustrated



Loader Arm Hydraulic Assembly (Continued)

| Ref. No. | Part No. | Qty. | Description |
|----------|----------|------|-------------------|
| 27 | 100-1259 | 1 | HYD Tube ASM |
| 27:1 | 237-22 | 1 | O-Ring |
| 28 | 99-6162 | 2 | Cylinder-Lift |
| 29 | 3334-945 | 4 | Tie-Cable |
| 30 | 100-6127 | 1 | Sleeve-Protective |
| 31 | 98-0213 | 2 | HYD Hose ASM |
| 32 | 3253-3 | 1 | Washer-Lock |
| 33 | 3256-2 | 1 | Washer-Flat |
| 34 | 56-7973 | 2 | Clamp-Tube |

| Ref. No. | Part No. | Qty. | Description |
|----------|----------|------|-------------|
| | | | |
| | | | |
| | | | |
| | | | |

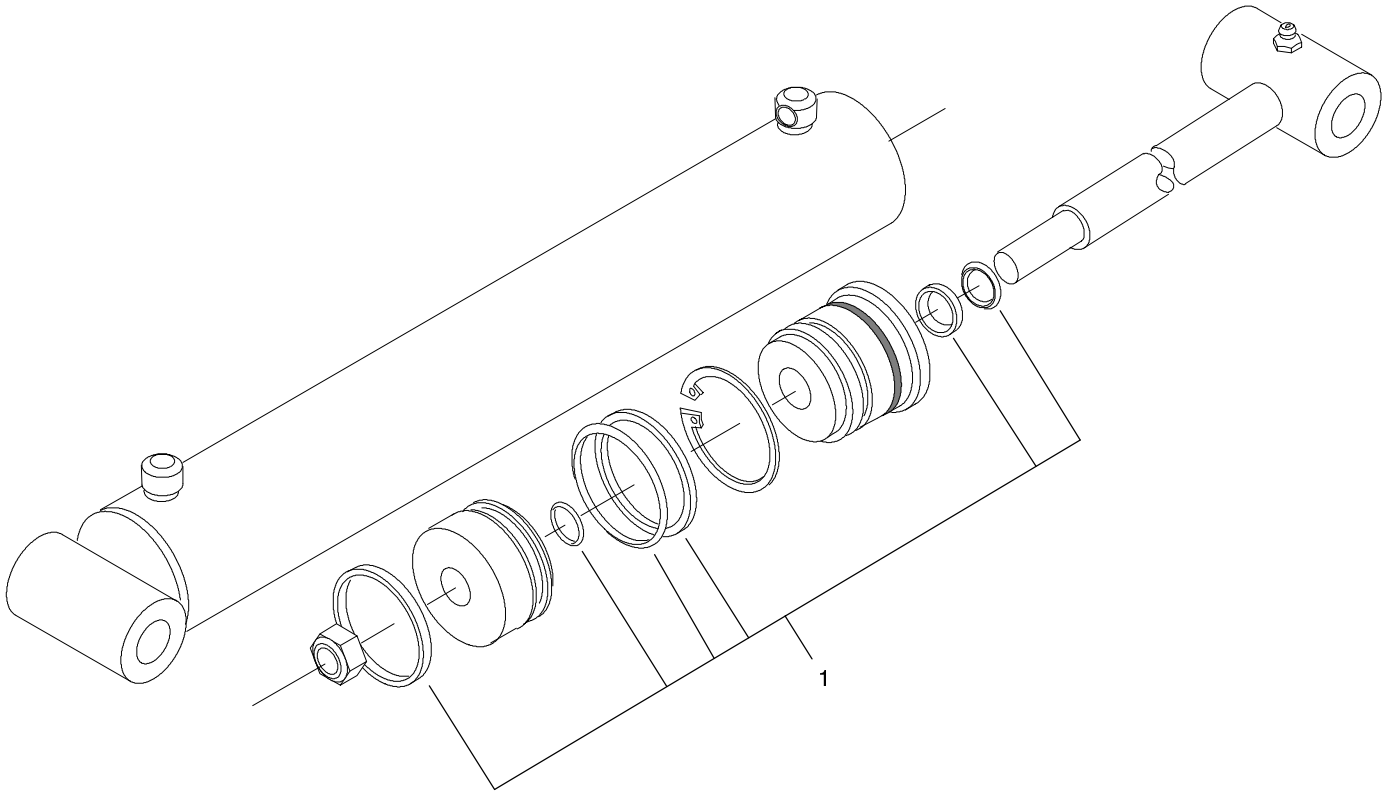


Sheet No.:A5
C-3618

Hydraulic Cylinder Assembly No. 95-3578

| Ref. No. | Part No. | Qty. | Description |
|----------|----------|------|-------------|
| 1 | 100-6108 | 1 | Kit-Seal |

| Ref. No. | Part No. | Qty. | Description |
|----------|----------|------|-------------|
| | | | |

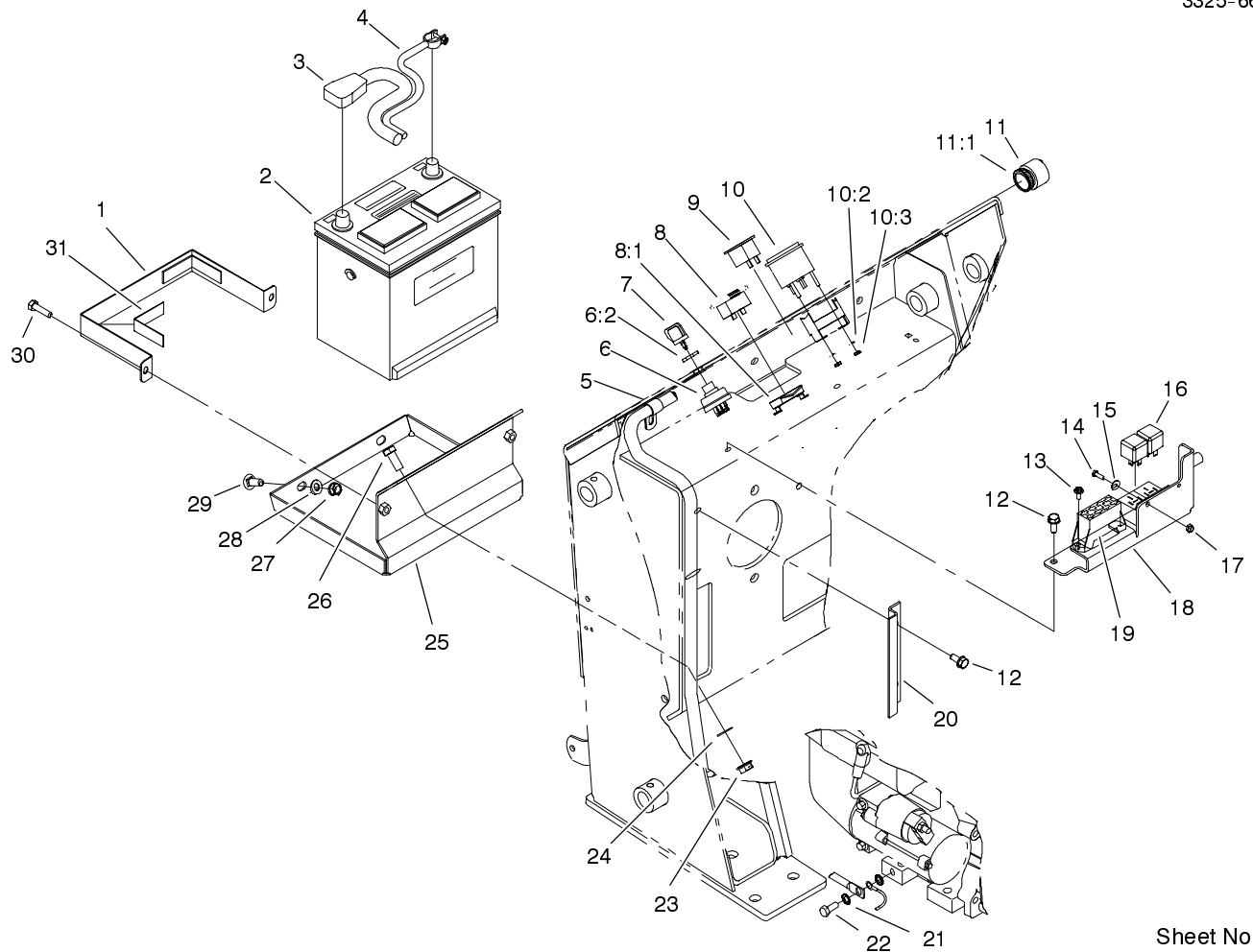


Sheet No.:A6
C-3619

Hydraulic Cylinder Assembly No. 99-6162

| Ref. No. | Part No. | Qty. | Description |
|----------|----------|------|-------------|
| 1 | 100-6107 | 1 | Kit-Seal |

| Ref. No. | Part No. | Qty. | Description |
|----------|----------|------|-------------|
|----------|----------|------|-------------|

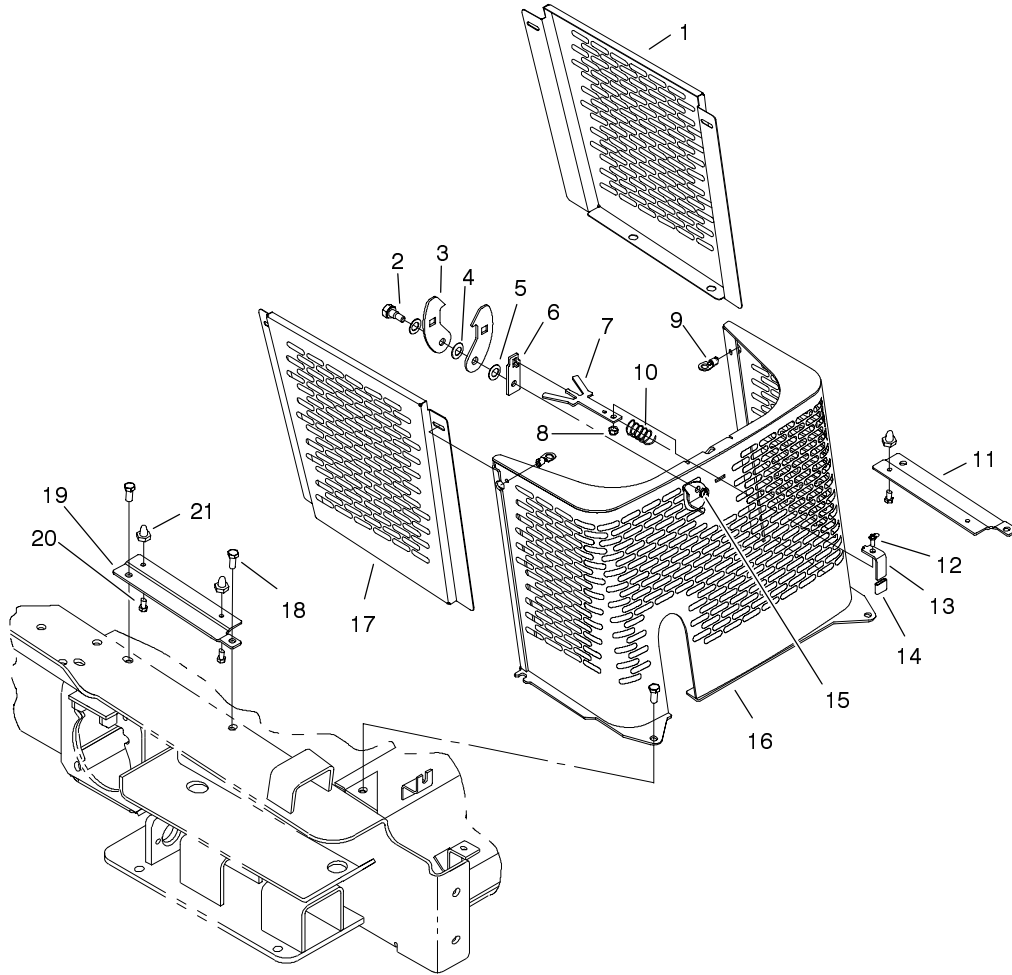


Sheet No.:15

Electrical System Assembly

| Ref. No. | Part No. | Qty. | Description | Ref. No. | Part No. | Qty. | Description |
|----------|------------|------|----------------------------|----------|-------------|------|------------------------|
| 1 | 98-2795-03 | 1 | Bracket-Clamp, Battery | 17 | 3296-2 | 2 | Nut-Lock |
| 2 | 104-9979 | 1 | Battery (Dry) | 18 | 100-1291-03 | 1 | Fuse/Relay Bracket ASM |
| 3 | 99-6185 | 1 | Cable-Battery, Positive | 19 | 104-7412 | 1 | Harness-Wire |
| 4 | 99-6186 | 1 | Cable-Battery, Negative | *19:1 | 114594 | 1 | Fuse-10 Amp |
| 5 | 2412-39 | 1 | R-Clamp | *19:2 | 109102 | 1 | Fuse-25 Amp |
| 6 | 88-9830 | 1 | Switch-Ignition | *19:3 | NN10277 | 1 | Fuse-30 Amp |
| 6:2 | 218-461 | 1 | Nut-HH | *19:4 | 109355 | 1 | Fuse-15 Amp |
| 7 | 63-8360 | 1 | Key-Ignition | 20 | 100-6117-01 | 1 | Shield-Wiring |
| 8 | 104-7427 | 1 | Hourmeter-Inductive, Round | 21 | 3255-8 | 2 | Washer-Lock/Ext |
| 8:1 | 104-4234 | 1 | Clip-Mounting, Hourmeter | 22 | 33104-020 | 1 | Screw-HHF |
| 9 | 104-2839 | 1 | Light-Temp, Oil | 23 | 32128-42 | 2 | Nut-HF |
| 10 | 66-2940 | 1 | Gauge-Fuel | 24 | 3256-4 | 2 | Washer-Flat |
| 10:2 | 3254-1 | 2 | Washer-Lock/Int | 25 | 98-2793-03 | 1 | Battery Tray ASM |
| 10:3 | 3217-27 | 2 | Nut-Hex | 26 | 324-4 | 2 | Screw-HH |
| 11 | 80-9330 | 1 | Alarm - Audio | 27 | 3296-39 | 2 | Nut-Lock, NI |
| 11:1 | 104-5107 | 1 | Nut-Plastic, Knurled | 28 | 3256-38 | 2 | Washer-Flat |
| 12 | 32144-70 | 4 | Screw-HH | 29 | 3231-22 | 2 | Screw-CARR |
| 13 | 12-5450 | 2 | Screw | 30 | 322-3 | 2 | Screw-HH |
| 14 | 3290-134 | 2 | Screw | 31 | 94-9566 | 2 | Pad - Footrest |
| 15 | 3256-49 | 2 | Washer-Flat | | | | |
| 16 | 98-7249 | 2 | Relay | | | | |

* Not illustrated

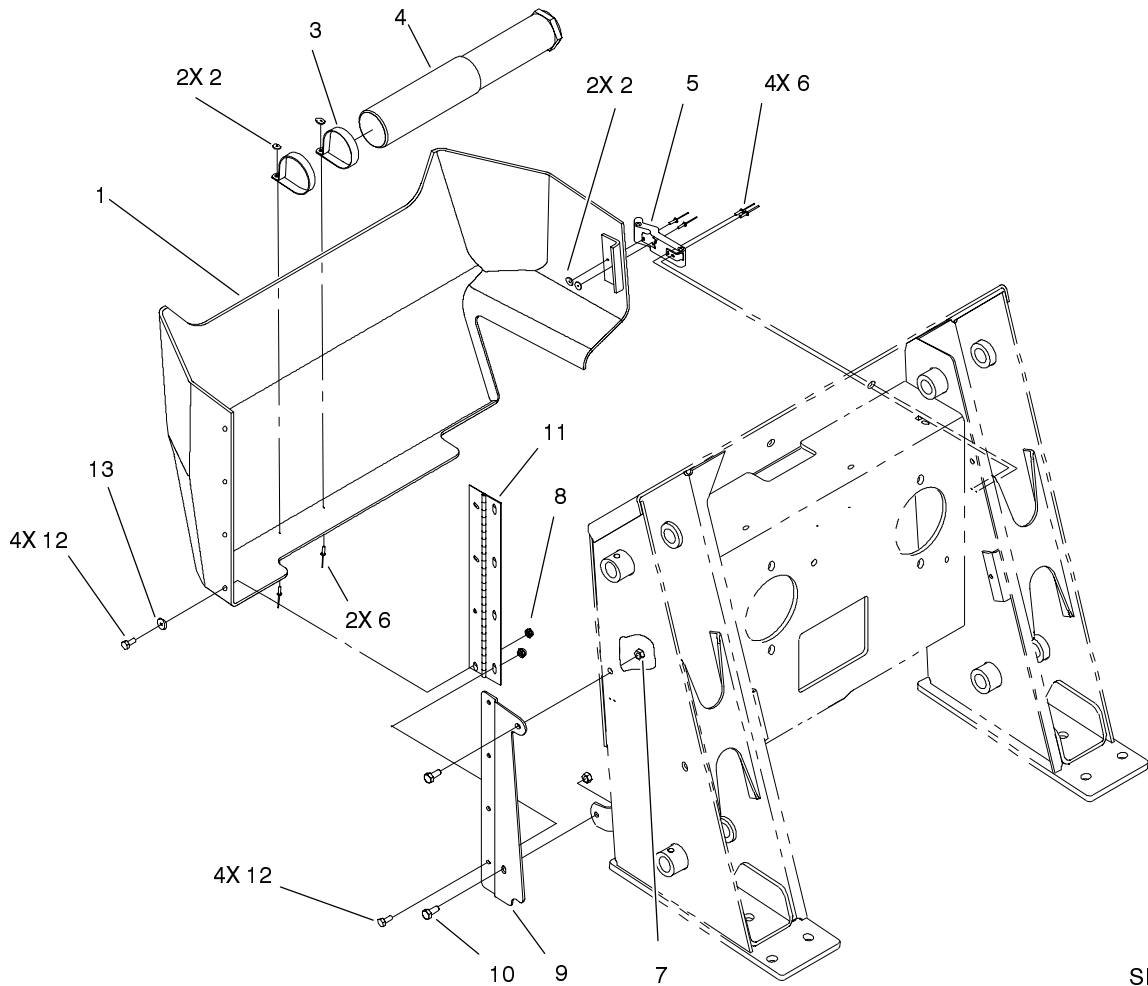


Sheet No.:16

Grill Assembly

| Ref. No. | Part No. | Qty. | Description |
|----------|-------------|------|------------------------|
| 1 | 100-4210-03 | 1 | Panel-Side, LH |
| 2 | 27-5240 | 1 | Bolt-Shoulder |
| 3 | 100-4224 | 2 | Latch-Hood |
| 4 | 47-2910 | 1 | Washer-Thrust |
| 5 | 257-10 | 2 | Washer-Thrust |
| 6 | 100-4225 | 1 | Spacer-Latch |
| 7 | 100-4226 | 1 | Lever-Latch |
| 8 | 3296-29 | 1 | Nut-Lock |
| 9 | 95-4013 | 2 | Latch ASM |
| 10 | 100-6102 | 1 | Spring-Compression |
| 11 | 100-1281-03 | 1 | Support-Side Panel, LH |
| 12 | 322-2 | 1 | Screw-HH |
| 13 | 100-4223 | 1 | Handle-Latch |
| 14 | 100-1655 | 1 | Grip-Handle |
| 15 | 3296-59 | 1 | Nut-Lock NI |
| 16 | 100-1282-03 | 1 | Grill ASM |
| 17 | 100-4211-03 | 1 | Panel-Side, RH |
| 18 | 323-5 | 4 | Screw-HH |
| 19 | 100-1280-03 | 1 | Support-Side Panel, RH |
| 20 | 46-8093 | 4 | Screw-Plastite |
| 21 | 95-3989 | 4 | Mount-Sidepanel |

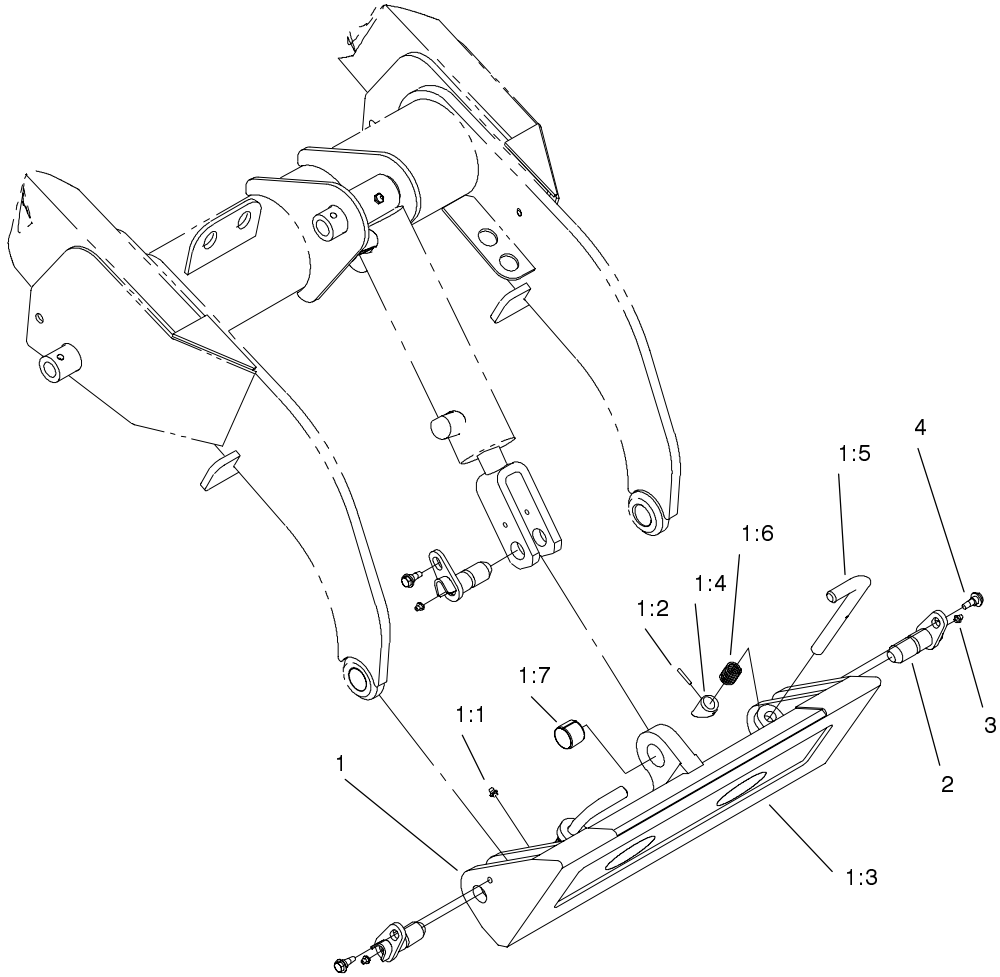
| Ref. No. | Part No. | Qty. | Description |
|----------|----------|------|-------------|
| | | | |
| | | | |
| | | | |
| | | | |
| | | | |
| | | | |
| | | | |
| | | | |
| | | | |
| | | | |



Rear Access Panel Assembly

| Ref. No. | Part No. | Qty. | Description |
|----------|-------------|------|----------------------|
| 1 | 100-1288 | 1 | Cover-Back |
| 2 | 3269-10 | 4 | Washer-Back |
| 3 | 2412-120 | 2 | R-Clamp |
| 4 | 74-0720 | 1 | Tube-Manual |
| 5 | 80-6980 | 1 | Latch |
| 6 | 3269-17 | 4 | Rivet-Pop |
| 7 | 3296-47 | 2 | Nut-Lock, NI |
| 8 | 3296-16 | 8 | Nut-Lock, NI |
| 9 | 100-1289-01 | 1 | Bracket-Hinge, Cover |
| 10 | 322-3 | 2 | Screw-HH |
| 11 | 100-1290 | 1 | Hinge-Cover |
| 12 | 321-39 | 8 | Screw-HH |
| 13 | 3256-1 | 4 | Washer-Flat |

| Ref. No. | Part No. | Qty. | Description |
|----------|----------|------|-------------|
| | | | |

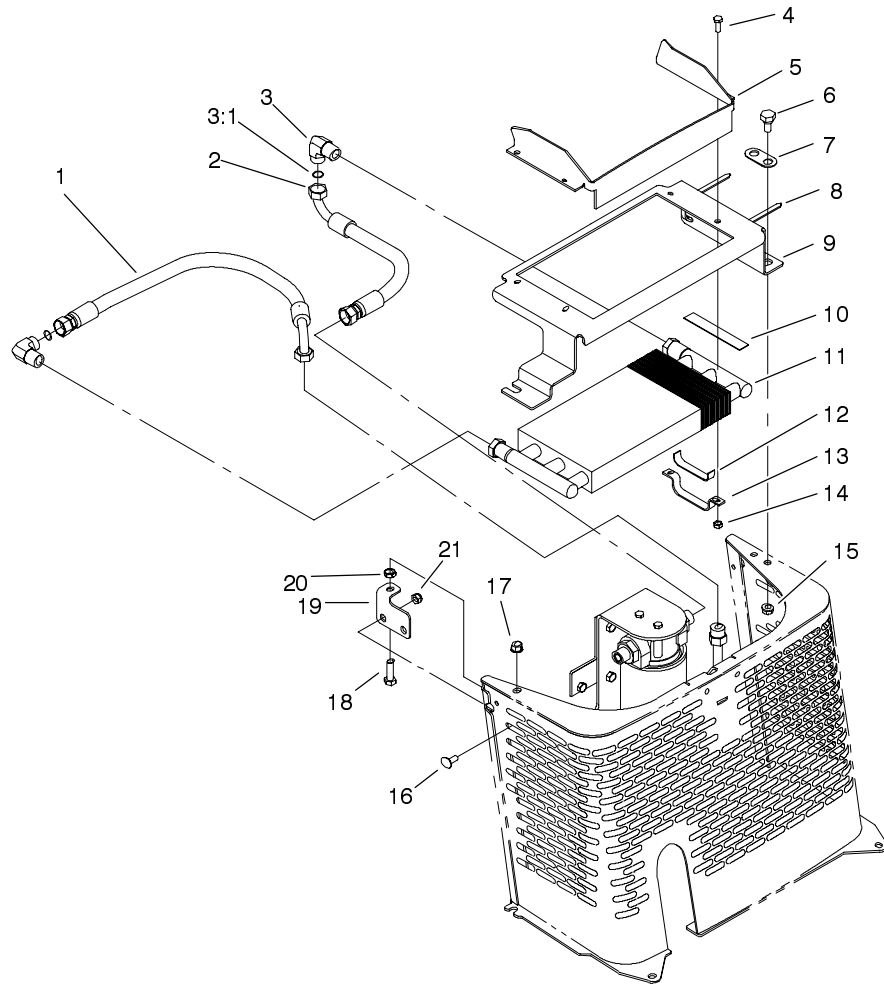


Sheet No.:18

Quick Attach Assembly

| Ref. No. | Part No. | Qty. | Description |
|----------|------------|------|---------------------|
| 1 | 98-4690 | 1 | Quick Attach ASM |
| 1:1 | 302-5 | 2 | Fitting-Grease |
| 1:2 | 32121-94 | 2 | Pin-Special |
| 1:3 | 98-4691-03 | 1 | Mount-Attach, Quick |
| 1:4 | 98-4692 | 2 | Cam-Attach, Quick |
| 1:5 | 100-3373 | 2 | Pin |
| 1:6 | 98-4694 | 2 | Spring-Compression |
| 1:7 | 98-4871 | 1 | Bushing-Tension |
| 2 | 99-1414 | 3 | Pin-Pivot |
| 3 | 302-5 | 3 | Fitting-Grease |
| 4 | 99-5105 | 3 | Bolt-Shoulder |

| Ref. No. | Part No. | Qty. | Description |
|----------|----------|------|-------------|
| | | | |
| | | | |
| | | | |
| | | | |
| | | | |
| | | | |
| | | | |
| | | | |
| | | | |
| | | | |

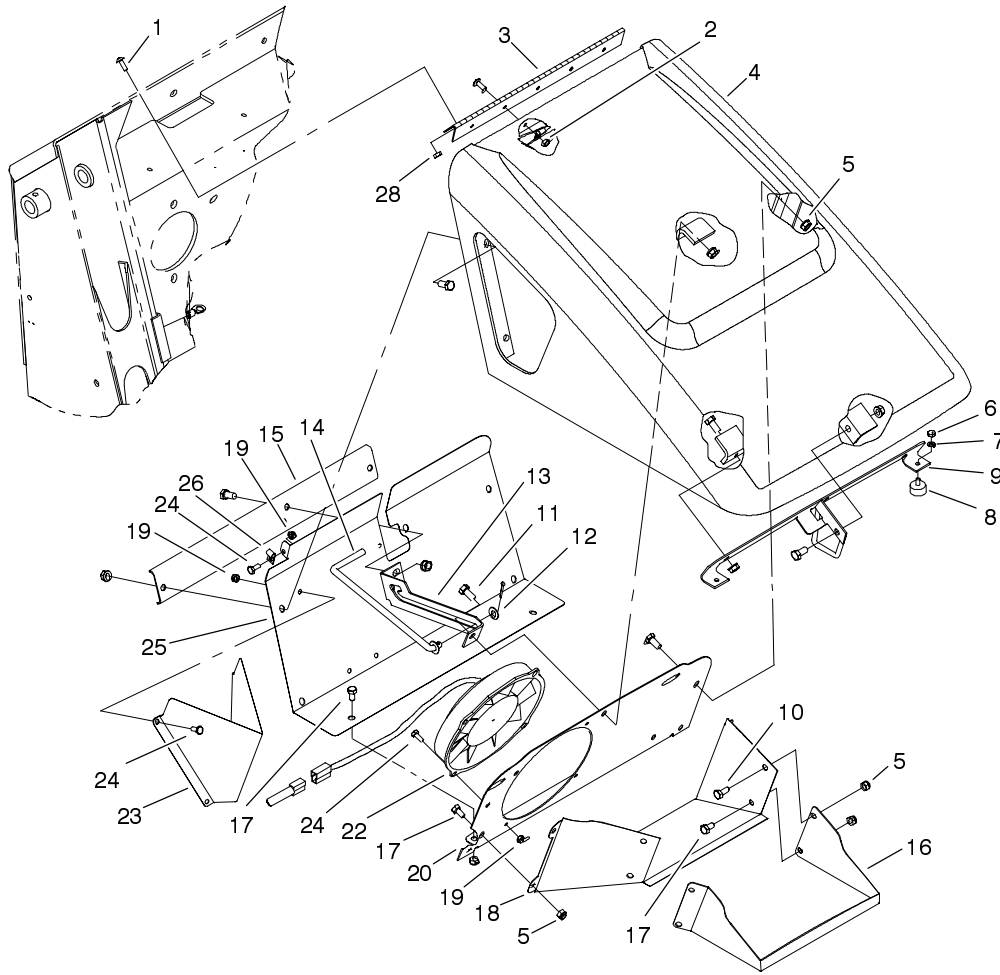


Sheet No.:22

Hydraulic Cooler Assembly

| Ref. No. | Part No. | Qty. | Description |
|----------|-------------|------|-----------------------|
| 1 | 104-2848 | 1 | HYD Hose ASM |
| 2 | 104-2806 | 1 | HYD Hose ASM |
| 3 | 340-168 | 2 | Adapter-Elbow, 90 DEG |
| 3:1 | 237-30 | 1 | O-Ring |
| 4 | 321-6 | 4 | Screw-HH |
| 5 | 104-2802-03 | 1 | Shield-Cooler |
| 6 | 46-3380 | 2 | Bolt-Shoulder |
| 7 | 104-2804 | 1 | Washer-Pivot |
| 8 | 3334-945 | 2 | Tie-Cable |
| 9 | 104-2801-03 | 1 | Bracket-Cooler |
| 10 | 94-9566 | 2 | Pad - Footrest |
| 11 | 24-0760 | 1 | Cooler ASM |
| 12 | 104-2816 | 2 | Pad - Support |
| 13 | 104-2803 | 2 | Support-Cooler |
| 14 | 3296-42 | 4 | Nut-Lock NI |
| 15 | 3296-39 | 2 | Nut-Lock, NI |
| 16 | 3230-31 | 2 | Screw-CARR |
| 17 | 32128-43 | 1 | Nut-Flange |
| 18 | 323-7 | 1 | Screw-HH |
| 19 | 104-2805-03 | 1 | Bracket-Holddown |
| 20 | 3218-3 | 1 | Nut-Jam |
| 21 | 3296-29 | 2 | Nut-Lock |

| Ref. No. | Part No. | Qty. | Description |
|----------|----------|------|-------------|
| | | | |



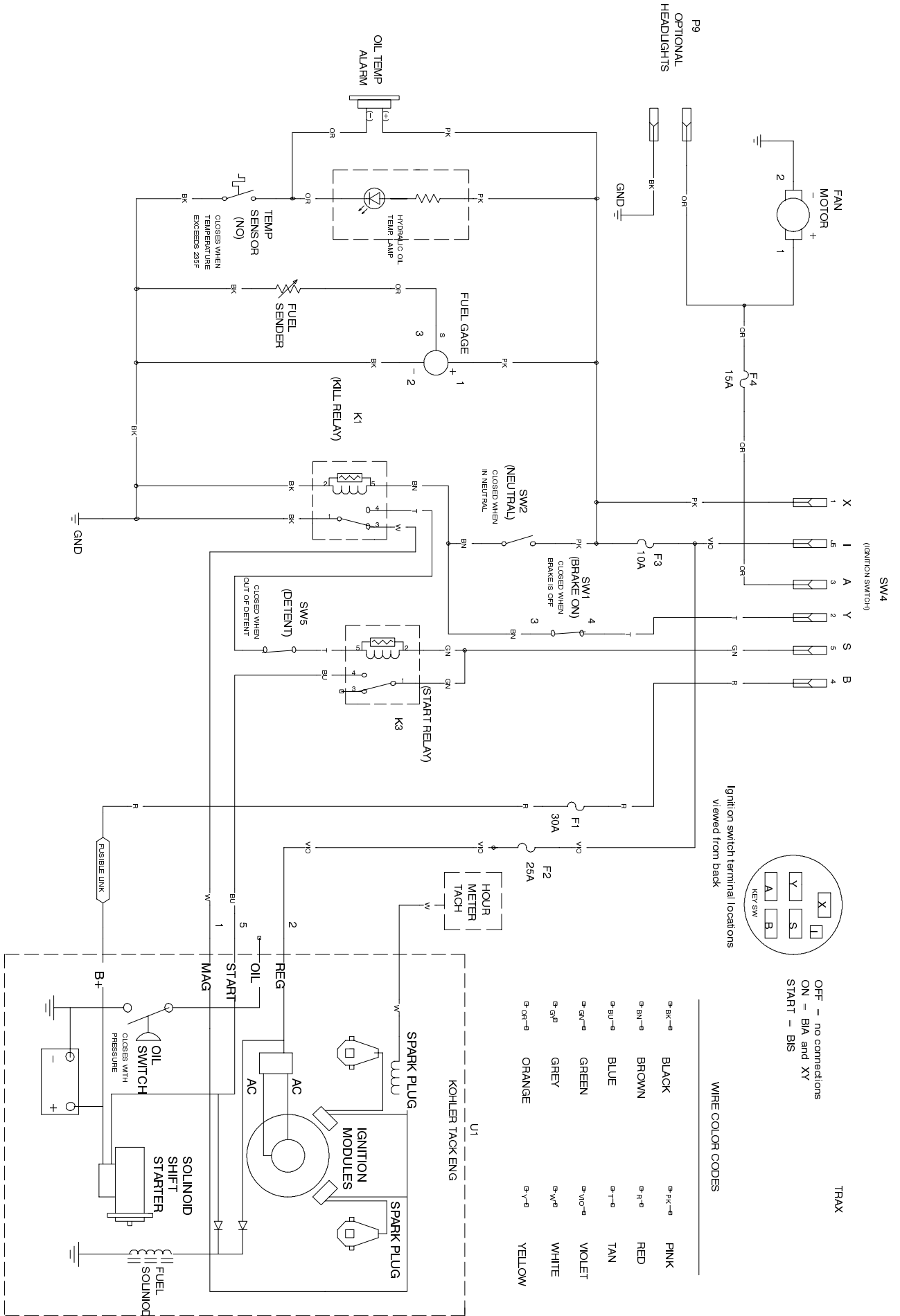
Sheet No.:23

Hood Assembly

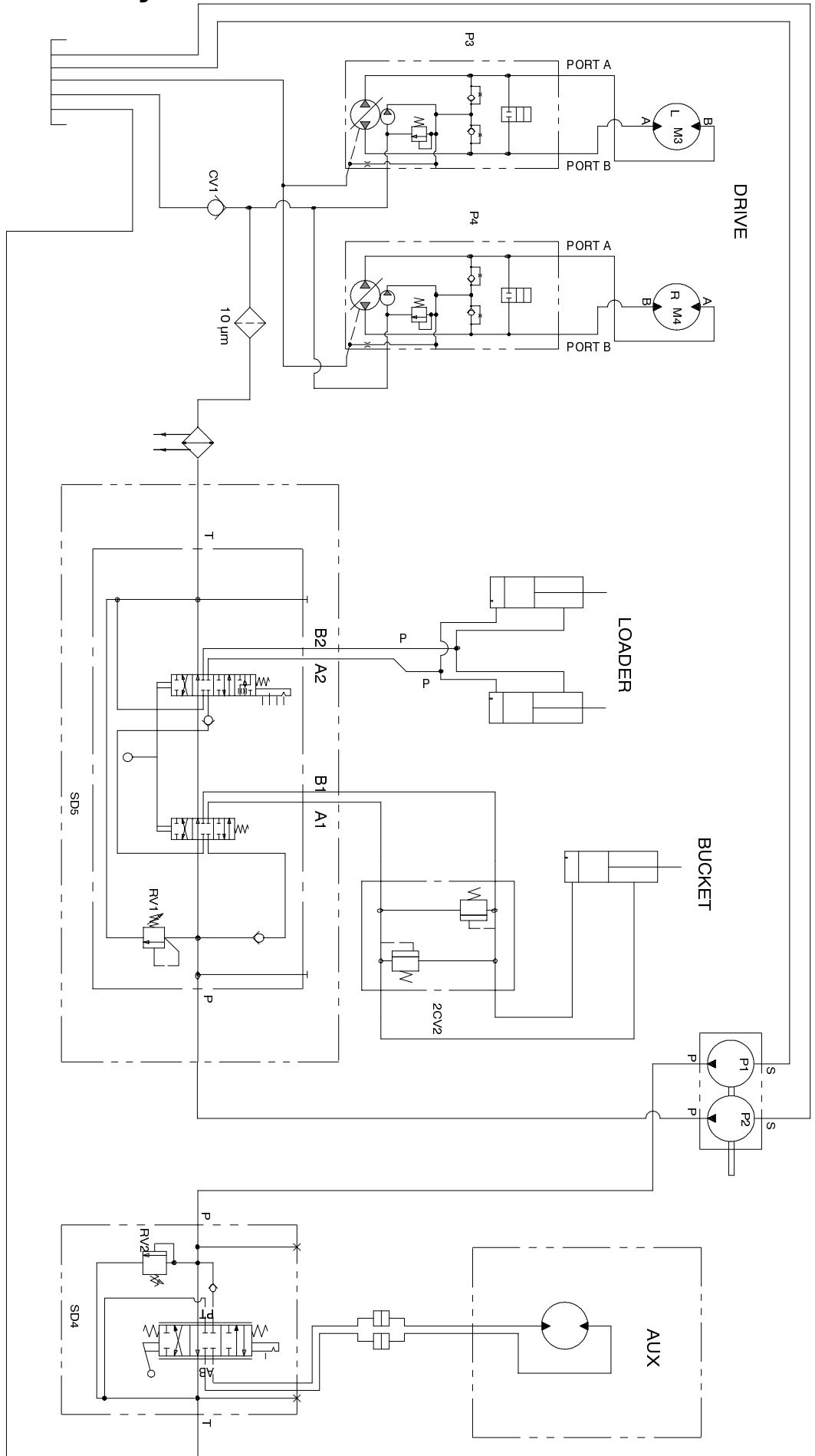
| Ref. No. | Part No. | Qty. | Description |
|----------|-------------|------|---------------------------|
| 1 | 9114604 | 9 | Screw-Head, Truss |
| 2 | 3296-42 | 5 | Nut-Lock NI |
| 3 | 100-1284 | 1 | Hinge-Hood |
| 4 | 100-4222 | 1 | Engine Hood ASM |
| 5 | 3296-29 | 26 | Nut-Lock |
| 6 | 3217-5 | 12 | Nut-Hex |
| 7 | 3253-3 | 2 | Washer-Lock |
| 8 | 240-14 | 2 | Bumper - Rubber |
| 9 | 100-1297-03 | 1 | Rod Latch ASM |
| 10 | 322-3 | 17 | Screw-HH |
| 11 | 3272-11 | 1 | Pin-Cotter |
| 12 | 3256-24 | 1 | Washer-Flat |
| 13 | 100-1292-03 | 1 | Bracket-Rod/Hood |
| 14 | 100-4229 | 1 | Rod-Support, Hood |
| 15 | 100-4212-03 | 1 | Support-Bracket, Rod/Hood |
| 16 | 104-2813-03 | 1 | Shroud-Fan, Front |
| 17 | 322-2 | 9 | Screw-HH |
| 18 | 104-2812-03 | 1 | Shroud-Fan |
| 19 | 3296-16 | 9 | Nut-Lock, NI |
| 20 | 104-2814-03 | 1 | Plate-Baffle, Fan |
| 22 | 104-2809 | 1 | Fan-12v |
| 23 | 104-2811-03 | 1 | Baffle-Fan |
| 24 | 321-3 | 9 | Screw-HH |
| 25 | 104-2815-03 | 1 | Panel-Rack, Fan |

| Ref. No. | Part No. | Qty. | Description |
|----------|----------|------|-------------|
| 26 | 2412-91 | 2 | Clamp |
| 28 | 32128-33 | 4 | Nut-HF |

Electrical Schematic



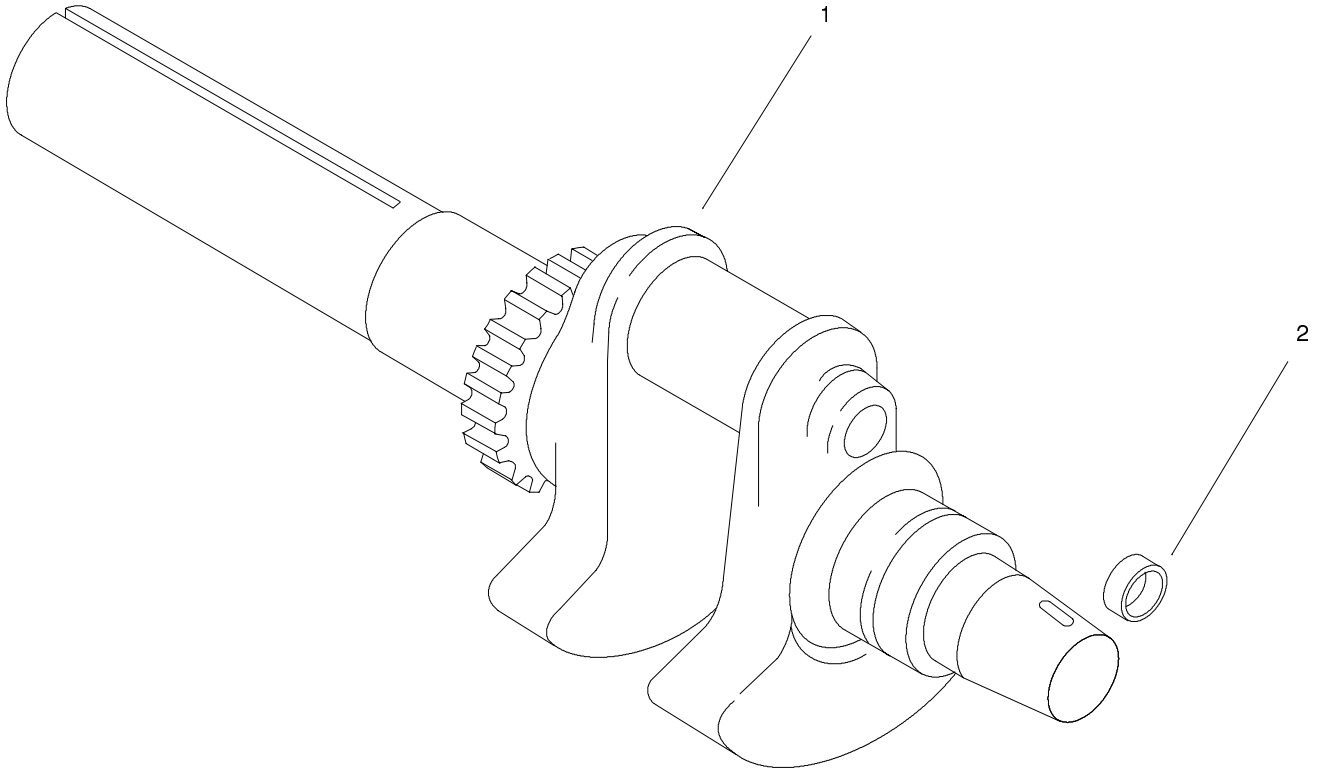
Hydraulic Schematic



DISPLACEMENT AND PRESSURE CHART

| COMPONENT | DISPLACEMENT | | PRESSURE | | FLOWRATE* | |
|-----------|--------------|-----------|----------|---------|-----------|------|
| | CU IN/REV | CU CM/REV | PSI | BAR | GPM | LPM |
| P1 * | 0.73 CU IN | 12 CC | | | 11.2 | 42.4 |
| P2 * | 0.36 CU IN | 6 CC | | | 5.5 | 21.0 |
| M1 M2 | 32.3 CU IN | 528 CC | | | | |
| P3, P4** | 0-1.28 CU IN | 21 CC | | | 17 | 64 |
| RV1 | | | 2400 PSI | | | |
| RV2 | | | 3000 PSI | 207 BAR | | |
| CV1 | | | 5 PSI | | | |
| 2CV2 | | | 2800 PSI | | | |

* FLOWRATE CALCULATED AT 3600 RPM AND 98% EFFICIENCY;
 ** FLOWRATE CALCULATED AT 3100 RPM AND 98% EFFICIENCY.

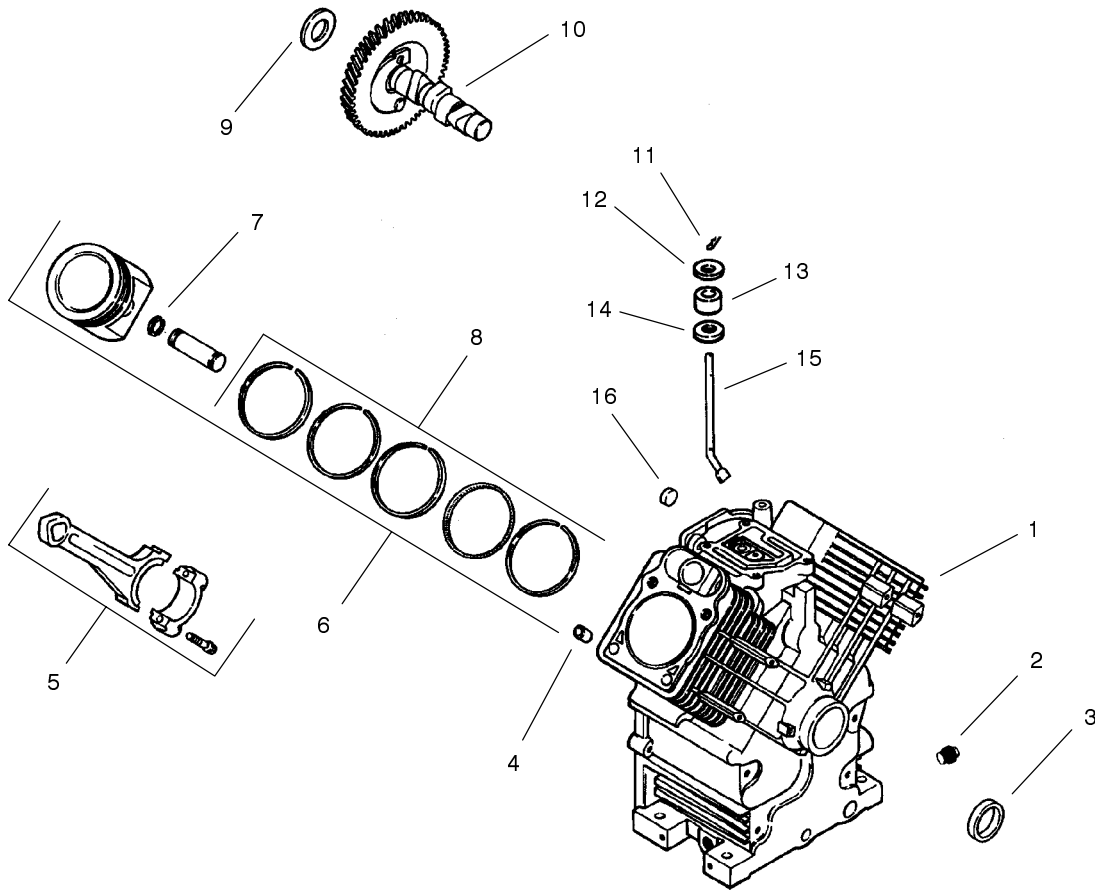


Crankshaft (CH20S 64656 Kohler)

| Ref. No. | Part No. | Qty. | Description |
|----------|-------------|------|-------------|
| 1 | 24 014 90-S | 1 | Crankshaft |
| 2 | 52 139 09-S | 1 | Plug, cup |

| Ref. No. | Part No. | Qty. | Description |
|----------|----------|------|-------------|
| | | | |

Obtain Parts From Kohler

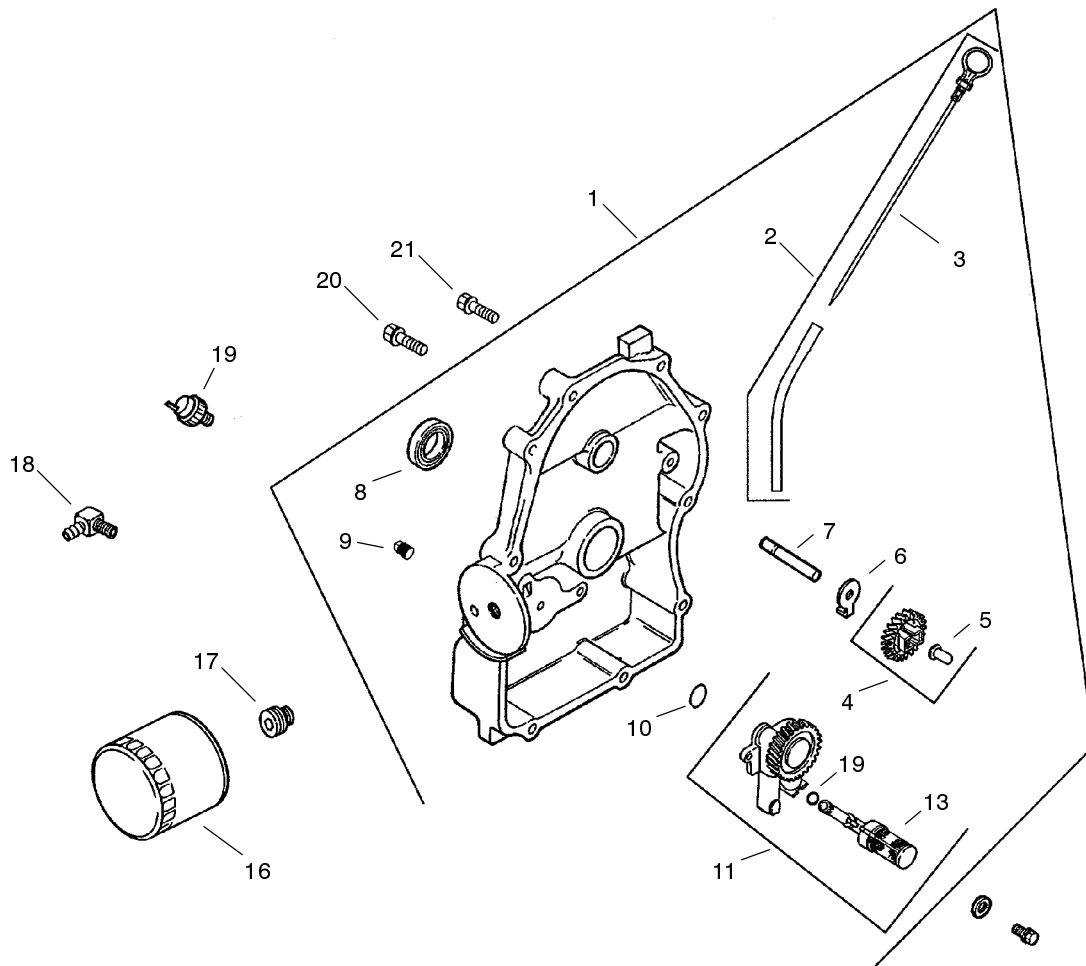


Crankcase (CH20S 64656 Kohler)

| Ref. No. | Part No. | Qty. | Description |
|----------|-------------|------|-------------------------------------|
| 1 | | 1 | Crankcase (Use Miniblock 24 782 15) |
| 2 | 52 139 02-S | 2 | Plug, pipe |
| 3 | 24 032 01-S | 1 | Seal, oil front |
| 4 | 12 380 13-S | 6 | Pin, dowel locating |
| 5 | 24 067 13-S | 2 | Connecting Rod (Std.) |
| | 24 067 14-S | 2 | Connecting Rod (.25) |
| 6 | 24 874 01-S | 2 | Piston w/Ring Set (Std.) |
| | 24 874 02-S | 2 | Piston w/Ring Set (.25) |
| | 24 874 03-S | 2 | Piston w/Ring Set (.50) |
| | 24 874 14-S | 2 | Piston w/Ring Set (.08) |
| 7 | 24 018 01-S | 4 | Retainer, piston pin |
| 8 | 24 108 01-S | 2 | Ring Set (Std.) |
| | 24 108 02-S | 2 | Ring Set (.25) |
| | 24 108 03-S | 2 | Ring Set (.50) |
| 9 | 12 422 09-S | A/R | Shim, camshaft - red |
| | 12 422 13-S | A/R | Shim, camshaft - black |
| | 12 422 07-S | A/R | Shim, camshaft - white |
| | 12 422 08-S | A/R | Shim, camshaft - blue |
| | 12 422 10-S | A/R | Shim, camshaft - yellow |
| | 12 422 11-S | A/R | Shim, camshaft - green |
| | 12 422 12-S | A/R | Shim, camshaft - gray |
| 10 | 24 012 10-S | 1 | Camshaft |

| Ref. No. | Part No. | Qty. | Description |
|----------|-------------|------|----------------------------|
| 11 | 24 018 09-S | 1 | Retaining, Ring |
| 12 | M-931010-S | 1 | Washer, Nylon |
| 13 | 28 032 09-S | 1 | Seal, governor cross shaft |
| 14 | 24 468 15-S | 1 | Washer |
| 15 | 24 144 33-S | 1 | Shaft, governor cross |
| 16 | 52 139 09-S | 1 | Plug, cup |

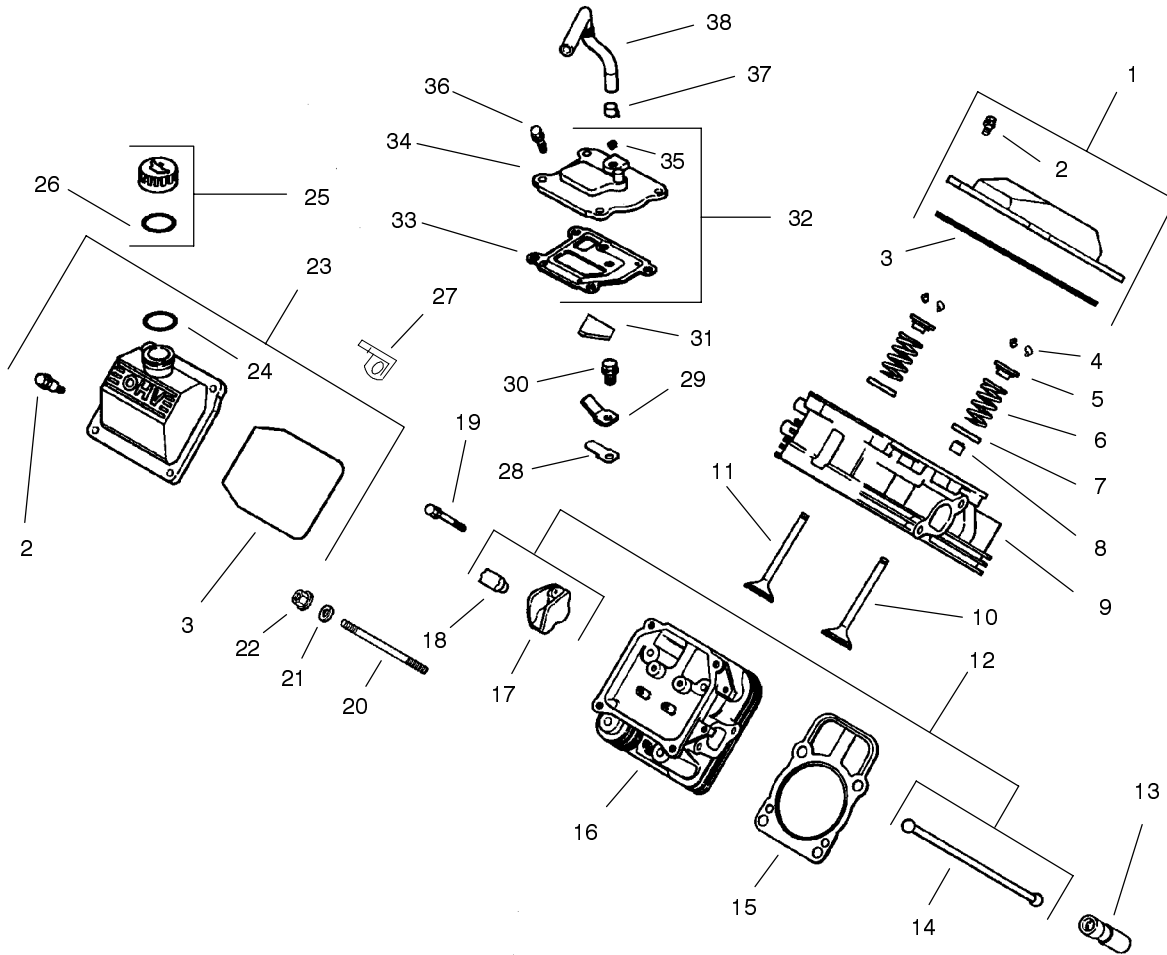
Obtain Parts From Kohler



Oil Pan/Lubrication (CH20S 64656 Kohler)

| Ref. No. | Part No. | Qty. | Description | Ref. No. | Part No. | Qty. | Description |
|----------|--------------|------|---------------------------------------|----------|----------|------|-------------|
| 1 | 24 009 92-S | 1 | Plate, Closure ASM (Includes 2-13) | | | | |
| 2 | 24 755 121-S | 1 | Dipstick & Tube Kit (Includes 3) | | | | |
| 3 | 24 038 10-S | 1 | Dipstick | | | | |
| 4 | 24 043 12-S | 1 | Kit, governor gear (Includes 5) | | | | |
| 5 | 12 380 01-S | 1 | Pin, governor regulating | | | | |
| 6 | 52 448 02-S | 1 | Tab, locking | | | | |
| 7 | 12 144 02-S | 1 | Shaft, governor gear | | | | |
| 8 | 52 032 08-S | 1 | Seal, oil (PTO end) | | | | |
| 9 | X-75-23-S | 2 | Plug, pipe 1/8" | | | | |
| 10 | 24 153 08-S | 1 | O-Ring | | | | |
| 11 | 24 393 10-S | 1 | Oil pump assembly (Includes 12,13) | | | | |
| 12 | 24 153 01-S | 1 | O-Ring, oil pick-up | | | | |
| 13 | 24 381 04-S | 1 | Pick-up, oil | | | | |
| 14 | M-631005-S | 2 | Washer, plain 6 mm | | | | |
| 15 | M-645025-S | 2 | Screw, hex flange | | | | |
| 16 | 52 050 02-S | 1 | Filter, oil | | | | |
| 17 | 24 136 01-S | 1 | Nipple, oil filter | | | | |
| 18 | 25 155 02-S | 1 | Connector | | | | |
| 19 | 24 099 03-S | 1 | Switch, pressure | | | | |
| 20 | 24 086 16-S | 9 | Screw, hex flange | | | | |
| 21 | 24 086 17-S | 1 | Screw, hex flange | | | | |

Obtain Parts From Kohler

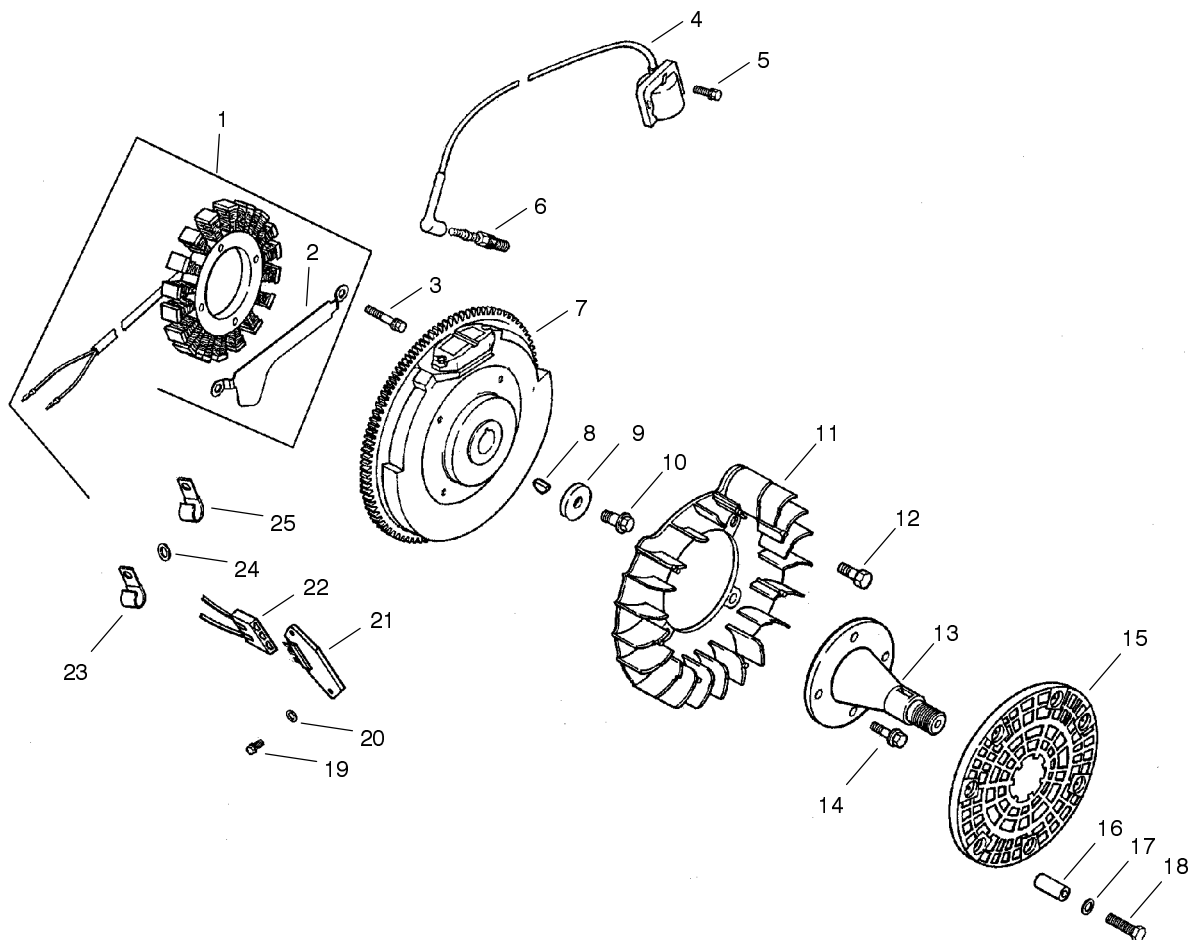


Head/Valve/Breather (CH20S 64656 Kohler)

| Ref. No. | Part No. | Qty. | Description |
|----------|-------------|------|--------------------------------------------|
| 1 | 24 755 74-S | 1 | Kit, valve cover - plain (Includes 2-3) |
| 2 | 24 086 32-S | 4 | Screw, shoulder |
| 3 | 24 153 16-S | 1 | O-Ring, valve cover |
| 4 | 12 755 03-S | 4 | Kit, retainer |
| 5 | 12 173 01-S | 4 | Cap, valve spring |
| 6 | 24 089 02-S | 4 | Spring, valve |
| 7 | 235011-S | 4 | Retainer, spring |
| 8 | 24 032 05-S | 2 | Seal, valve stem |
| 9 | 24 318 68-S | 1 | Head assembly, #1 cylinder |
| 10 | 24 017 01-S | 2 | Valve, intake (Std.) |
| | 24 017 02-S | 2 | Valve, intake (.25) |
| 11 | 24 016 01-S | 2 | Valve, exhaust (Std.) |
| | 24 016 02-S | 2 | Valve, exhaust (.25) |
| 12 | 24 755 66-S | 1 | Kit, valve train (Includes 15,18,19) |
| 13 | 12 351 01-S | 4 | Lifter, valve |
| 14 | 24 411 05-S | 4 | Rod, push |
| 15 | 24 041 08-S | 2 | Gasket, cylinder head |
| 16 | 24 318 71-S | 1 | Head assembly, #2 cylinder |
| 17 | 25 186 01-S | 4 | Arm, rocker |
| 18 | 24 599 01-S | 4 | Pivot, rocker arm |
| 19 | M-640034-S | 4 | Screw, hex. flange |
| 20 | 24 072 09-S | 1 | Stud, Cyl. Head |

| Ref. No. | Part No. | Qty. | Description |
|----------|-------------|------|--------------------------------------------------|
| 21 | 24 468 16-S | 1 | Washer, Flat |
| 22 | 24 100 10-S | 1 | Nut-HF |
| 23 | 24 755 75-S | 1 | Kit, valve cover - oil fill (Includes 2,3,23) |
| 24 | 24 153 09-S | 1 | O-Ring |
| 25 | 24 755 46-S | 1 | Kit, oil fill cap (Includes 24) |
| 26 | 12 153 03-S | 1 | O-Ring, oil fill cap |
| 27 | 24 445 01-S | 1 | Strap, Lifting |
| 28 | 24 402 03-S | 1 | Reed, breather |
| 29 | 12 018 01-S | 1 | Retainer, breather reed |
| 30 | M-545010-S | 1 | Screw, hex. flange |
| 31 | 24 050 01-S | 1 | Filter, breather |
| 32 | 24 033 01-S | 1 | Kit, breather (Includes 33-35) |
| 33 | 24 041 23-S | 1 | Gasket, breather |
| 34 | 24 096 58-S | 1 | Cover, breather |
| 35 | X-75-23-S | 1 | Plug, allen head pipe |
| 36 | M-645020-S | 4 | Screw, hex. flange |
| 37 | X-426-9-S | 1 | Clamp, breather |
| 38 | 24 326 26-S | 1 | Hose, breather |

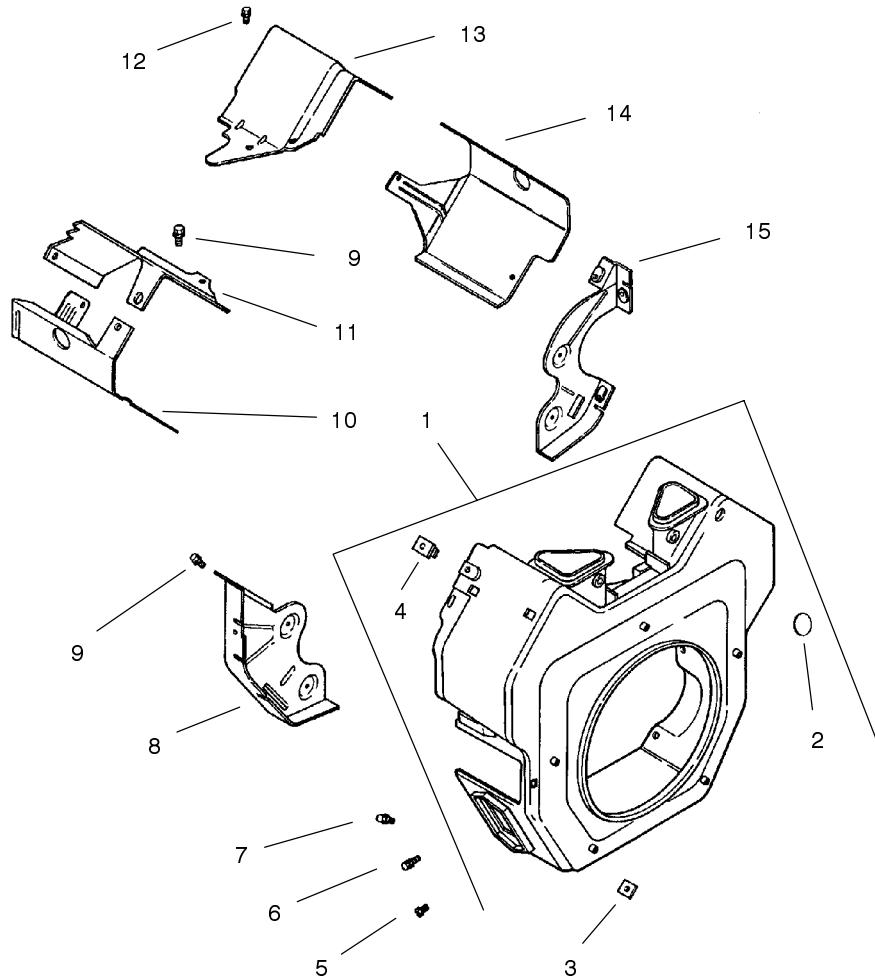
Obtain Parts From Kohler



Ignition/Electrical (CH20S 64656 Kohler)

| Ref. No. | Part No. | Qty. | Description | Ref. No. | Part No. | Qty. | Description |
|----------|-------------|------|------------------------------------|-------------|-------------|-----------------------------------------------------------------------------------|------------------------|
| 1 | 54 755 09-S | 1 | Kit, 15 amp stator (Includes 2) | 25 | 48 154 02-S | 1 | Clip, cable |
| 2 | 24 126 71-S | 1 | Bracket, stator wire | | | | Not Illustrated |
| 3 | M-548025-S | 2 | Screw, hex. cap | 25 518 12-S | 1 | Lead, black, (4" - 18 gauge - insulated grip barrel eyelet terminals) | |
| 4 | 24 584 01-S | 2 | Module, ignition | 25 086 91-S | 1 | Screw, sems hex cap (used to mount terminal on wiring harness to baffle) | |
| 5 | M-545020-S | 4 | Screw, hex. flange | 24 176 08-S | 1 | Harness, wiring | |
| 6 | 12 132 06-S | 2 | Spark Plug | X-22-11-S | 1 | Washer, lock | |
| 7 | 24 025 01-S | 1 | Flywheel | 25 454 03-S | 2 | Tie, cable | |
| 8 | X-42-15-S | 1 | Key | | | | |
| 9 | 12 468 03-S | 1 | Washer, plain 3/8" | | | | |
| 10 | 12 086 14-S | 1 | Screw, hex flange | | | | |
| 11 | 24 157 03-S | 1 | Fan | | | | |
| 12 | 25 086 47-S | 4 | Bolt, shoulder | | | | |
| 13 | 24 144 13-S | 1 | Shaft, front drive | | | | |
| 14 | M-839025-S | 4 | Screw, hex flange | | | | |
| 15 | 24 162 18-S | 1 | Screen, grass | | | | |
| 16 | 24 122 04-S | 4 | Spacer | | | | |
| 17 | X-25-92-S | 2 | Washer, plain 3/16 | | | | |
| 18 | M-403025-S | 4 | Screw | | | | |
| 19 | 24 086 18-S | 2 | Screw, phillips hd. | | | | |
| 20 | X-25-92-S | 2 | Washer | | | | |
| 21 | 25 403 03-S | 1 | Rectifier-regulator 15 amp | | | | |
| 22 | 236602-S | 1 | Connector | | | | |
| 23 | 235173-S | 1 | Clip, cable | | | | |
| 24 | X-25-63-S | 1 | Washer, plain 1/4" | | | | |

Obtain Parts From Kohler

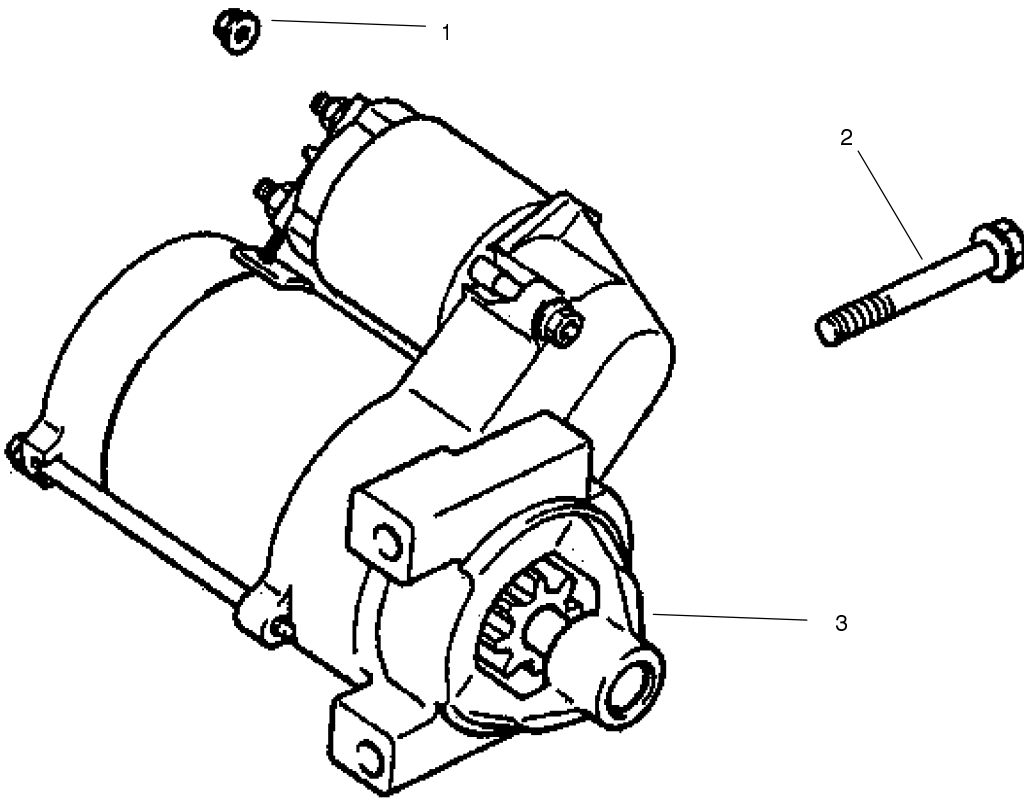


Blower Housing & Baffles (CH20S 64656 Kohler)

| Ref. No. | Part No. | Qty. | Description |
|----------|-------------|------|-------------------------------------|
| 1 | 24 027 20-S | 1 | Housing, blower (Includes 2-4) |
| 2 | 25 139 16-S | 1 | Plug, button 9/16" |
| 3 | 24 100 01-S | 3 | Nut, plastic |
| 4 | 24 100 02-S | 2 | Nut, plastic |
| 5 | M-551016-S | 1 | Screw, hex. flange |
| 6 | M-545016-S | 3 | Screw, hex. flange |
| 7 | M-545020-S | 4 | Screw, hex. flange |
| 8 | 24 146 16-S | 1 | Plate, backing - #2 side |
| 9 | M-645016-S | 6 | Screw, hex. flange |
| 10 | 24 063 20-S | 1 | Baffle, cyl. barrel-#2 side |
| 11 | 24 063 17-S | 1 | Baffle, valley - #2 side |
| 12 | M-545010-S | 2 | Screw, hex. flange |
| 13 | 24 063 24-S | 1 | Baffle, valley - #1 side |
| 14 | 24 063 58-S | 1 | Baffle, cyl. barrel-#1 side |
| 15 | 24 146 20-S | 1 | Plate, backing - #1 side |
| | 24 113 95-S | 1 | Not Illustrated Decal, HP |

| Ref. No. | Part No. | Qty. | Description |
|----------|----------|------|-------------|
| | | | |
| | | | |
| | | | |
| | | | |
| | | | |
| | | | |
| | | | |
| | | | |
| | | | |

Obtain Parts From Kohler

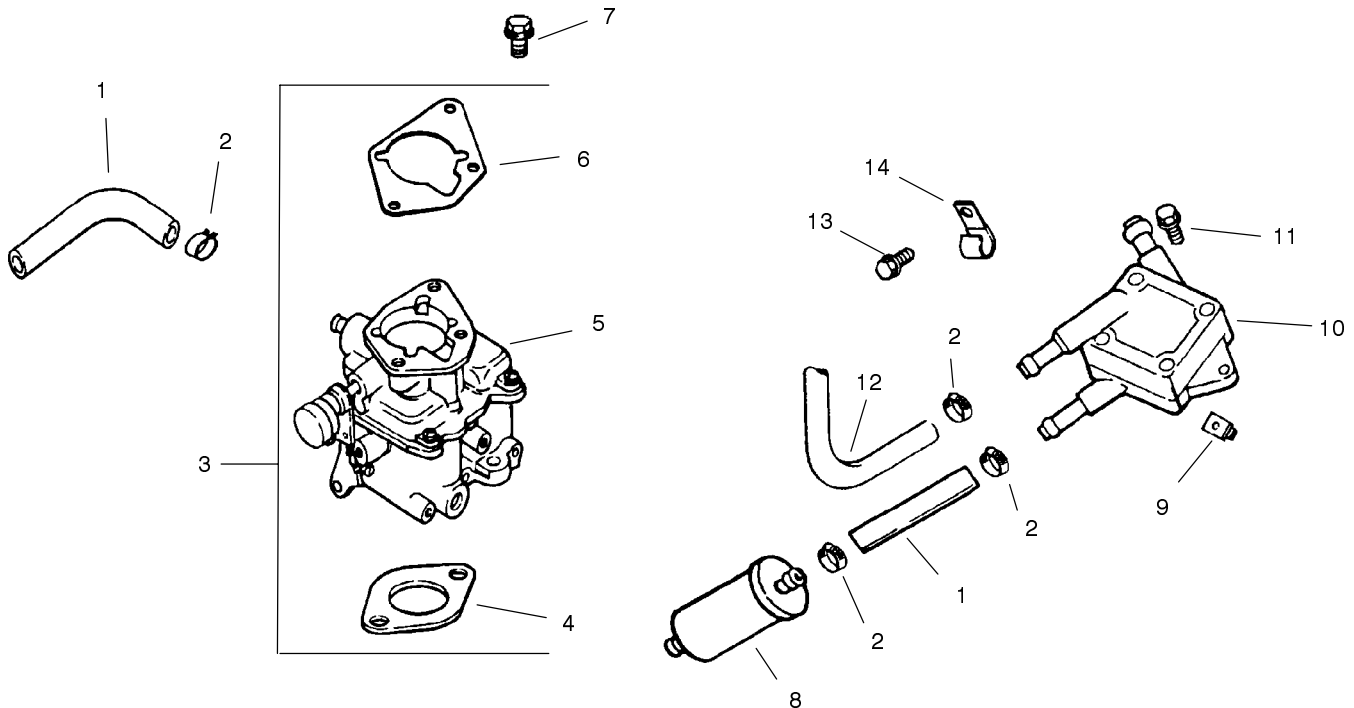


Starting System (CH20S 64656 Kohler)

| Ref. No. | Part No. | Qty. | Description |
|----------|-------------|------|--------------------------------------------------------------------|
| 1 | M-841080-S | 1 | Nut, hex flange |
| 2 | M-839080-S | 2 | Screw, hex. flange |
| 3 | 24 098 08-S | 1 | Starter, solenoid shift ASM (Service with kits listed below) |
| | | | Not Illustrated |
| | 25 755 33-S | 1 | Kit, pinion drive (Incl. Ring 24 141 01-S) |
| | 25 221 01-S | 1 | Kit, brush |
| | 25 435 04-S | 1 | Kit, Solenoid |

| Ref. No. | Part No. | Qty. | Description |
|----------|----------|------|-------------|
| | | | |

Obtain Parts From Kohler

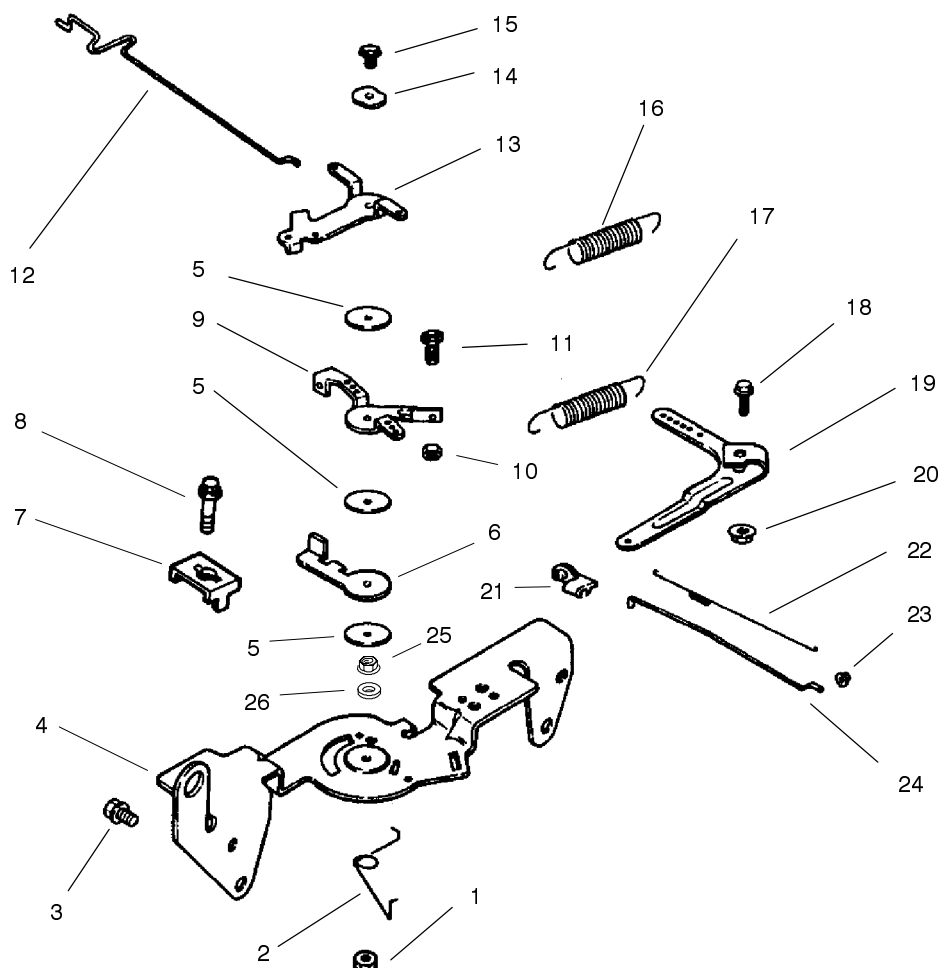


Fuel System (CH20S 64656 Kohler)

| Ref. No. | Part No. | Qty. | Description |
|----------|-------------|------|-------------------------------------------------------------------------------------------------------------------------------------|
| 1 | 25 353 32-S | 2 | Line, fuel - 9" |
| 2 | 25 237 14-S | 6 | Clamp, hose |
| 3 | 24 853 32-S | 1 | Kit, carburetor w/gasket (Incl. 4-6) |
| 4 | 24 041 06-S | 1 | Gasket, air cleaner |
| 5 | 24 053 32-S | 1 | Carburetor assembly (For information only not available separate Includes 24 757 01-S, 24 757 02-S, 24 757 03S & 24 757 07-S) |
| 6 | 24 041 17-S | 1 | Gasket, carburetor |
| 7 | M-651030-S | 2 | Screw, hex. flange |
| 8 | 24 050 02-S | 1 | Filter, fuel |
| 9 | 24 100 01-S | 2 | Nut, plastic |
| 10 | 24 393 16-S | 1 | Pump, fuel-pulse |
| 11 | 24 086 12-S | 2 | Screw, hex cap |
| 12 | 24 353 02-S | 1 | Line, fuel 15-1/2" |
| 13 | M-650012-S | 1 | Screw, hex flange |
| 14 | 47 154 01-S | 1 | Clip, cable |
| | 24 757 01-S | 1 | Not Illustrated Kit, solenoid (Includes solenoid 24 521 01-S, O-Ring 24 153 04-S, O-Ring 24 153 05-S, O-Ring 24 153 06-S, |

| Ref. No. | Part No. | Qty. | Description |
|----------|-------------|------|-----------------------------------------------------------------------------------------------------------------------------------------------------------------------------------------------------------------------------------------------------------------------------------------------------------------------------|
| | | | Solenoid screw 24 086 07-S, & Solenoid 24 435 01-S) |
| | 24 757 02-S | 1 | Kit-Float |
| | 24 757 07-S | 1 | Kit, choke (Includes choke lever cap 24 173 02-S) |
| | 24 757 03-S | 1 | Kit, carburetor repair (Includes inlet needle valve clip 24 154 01-S, inlet needle valve 24 462 01-S, carburetor body screw 24 086 09-S, carburetor body gasket 24 041 09-S, slow O-Ring 24 153 02-S, O-Ring 24 13 04-S, O-Ring 24 153 05-S, O-Ring 24 153 06-S, idle needle 24 368 01-S, & idle needle spring 24 089 11-S) |

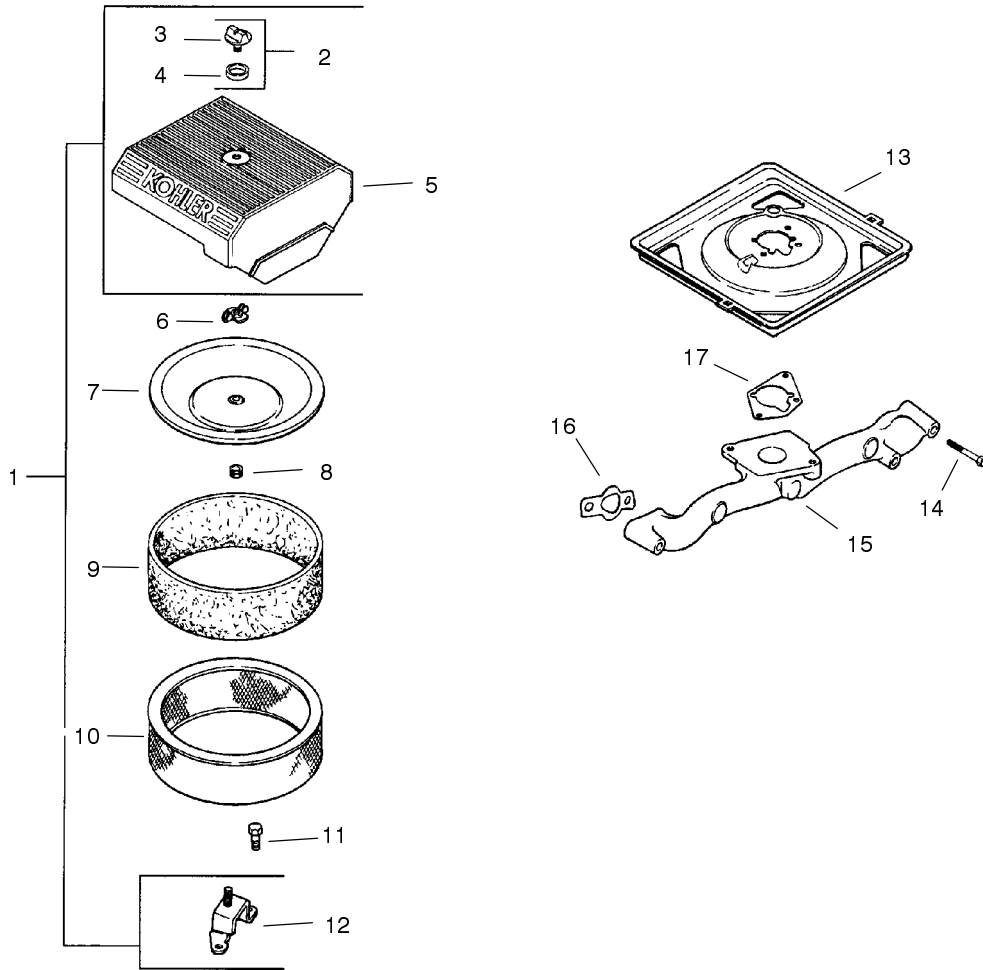
Obtain Parts From Kohler



Engine Controls (CH20S 64656 Kohler)

| Ref. No. | Part No. | Qty. | Description | Ref. No. | Part No. | Qty. | Description |
|----------|-------------|------|----------------------------|----------|------------|------|--------------|
| 1 | M-547050-S | 1 | Nut, hex. lock | 25 | M-545010-S | 1 | Nut-HF |
| 2 | 24 089 03-S | 1 | Spring, choke return | 26 | X-20-1-S | 1 | Washer, Lock |
| 3 | M-645016-S | 4 | Screw, hex. flange | | | | |
| 4 | 24 126 56-S | 1 | Bracket, control | | | | |
| 5 | 24 468 01-S | 3 | Washer, plain | | | | |
| 6 | 24 090 07-S | 1 | Lever, throttle actuator | | | | |
| 7 | 12 237 01-S | 2 | Clamp, cable | | | | |
| 8 | M-545016-S | 2 | Screw, hex. flange | | | | |
| 9 | 24 090 03-S | 1 | Lever, throttle control | | | | |
| 10 | M-446030-S | 1 | Nut, hex | | | | |
| 11 | M-401030-S | 1 | Screw, hex. cap | | | | |
| 12 | 24 079 02-S | 1 | Linkage, choke | | | | |
| 13 | 24 090 05-S | 1 | Lever, choke | | | | |
| 14 | 41 468 03-S | 1 | Washer, spring | | | | |
| 15 | M-545020-S | 1 | Screw, hex. flange | | | | |
| 16 | 24 089 51-S | 1 | Spring, throttle limiter | | | | |
| 17 | 24 089 46-S | 1 | Spring, governor | | | | |
| 18 | 24 211 03-S | 1 | Screw, hex. flange | | | | |
| 19 | 24 090 33-S | 1 | Lever, governor | | | | |
| 20 | M-641060-S | 1 | Nut, hex. flange | | | | |
| 21 | 25 158 11-S | 1 | Bushing, linkage retaining | | | | |
| 22 | 24 089 01-S | 1 | Spring, linkage | | | | |
| 23 | 25 158 08-S | 1 | Bushing, linkage retaining | | | | |
| 24 | 24 079 01-S | 1 | Linkage, throttle | | | | |

Obtain Parts From Kohler

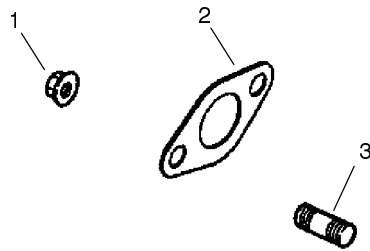


Air Intake/Filtration (CH20S 64656 Kohler)

| Ref. No. | Part No. | Qty. | Description |
|----------|-------------|------|-----------------------------------------|
| 1 | 24 743 05-S | 1 | Kit, air cleaner (Includes 2-5, 12) |
| 2 | 54 755 01-S | 1 | Kit, air cleaner knob (Includes 3,4) |
| 3 | 25 341 03-S | 1 | Knob, cover |
| 4 | 24 153 20-S | 1 | O-Ring |
| 5 | 24 096 67-S | 1 | Cover, air cleaner |
| 6 | 12 100 01-S | 1 | Wing Nut |
| 7 | 24 096 01-S | 1 | Cover, inner air cleaner |
| 8 | 24 032 03-S | 1 | Seal, inner air cleaner |
| 9 | 24 083 02-S | 1 | Precleaner, element |
| 10 | 24 083 03-S | 1 | Element, air cleaner |
| 11 | M-639016-S | 3 | Screw, hex flange |
| 12 | 24 126 21-S | 1 | Bracket, air cleaner base |

| Ref. No. | Part No. | Qty. | Description |
|----------|-------------|------|-----------------------------|
| 13 | 24 094 03-S | 1 | Base, air cleaner |
| 14 | M-651055-S | 4 | Screw, hex flange |
| 15 | 24 164 14-S | 1 | Manifold, intake |
| 16 | 24 041 01-S | 2 | Gasket, intake manifold |
| 17 | 24 041 06-S | 1 | Gasket, air cleaner base |

Obtain Parts From Kohler



Exhaust (CH20S 64656 Kohler)

| Ref. No. | Part No. | Qty. | Description |
|----------|--------------|------|------------------------|
| 1 | M-841080-S | 4 | Nut, hex flange |
| 2 | 24 041 02-S | 2 | Gasket, exhaust |
| 3 | 25 072 04-S | 4 | Stud |
| | | | Not Illustrated |
| | 24 782 15 | 1 | Miniblock |
| | 24 755 107-S | 1 | Gasket Set |

| Ref. No. | Part No. | Qty. | Description |
|----------|----------|------|-------------|
| | | | |

Obtain Parts From Kohler

