



Base Light Kit

Z Master® 4000 Series Riding Mower

Model No. 144-0389

Installation Instructions

Installation

Loose Parts

Use the chart below to verify that all parts have been shipped.

Procedure	Description	Qty.	Use
1	No parts required	–	Prepare the machine.
2	No parts required	–	Remove the existing front bumper.
3	Light Front bumper Hex-washer head screw	1 1 2	Install the light and front bumper.
4	No parts required	–	Remove the right side pod.
5	Headlight rocker switch	1	Install the headlight rocker switch.
6	Wire harness	1	Route and connect the wire harness.
7	No parts required	–	Install the right side pod.
8	No parts required	–	Connect the battery.

Note: Determine the left and right sides of the machine from the normal operating position.



1

Preparing the Machine

No Parts Required

Procedure

1. Park the machine on a level surface.
2. Disengage the blade-control switch.
3. Move the motion-control levers outward to the NEUTRAL-LOCK position.
4. Engage the parking brake.
5. Lower the mower deck to the lowest height of cut.
6. Shut off the engine and remove the key.
7. Disconnect the negative-battery cable.

2

Removing the Existing Front Bumper

No Parts Required

Procedure

1. Remove the 2 torx-head screws securing the front bumper (Figure 1).
Retain the 2 torx-head screws for later installation.
2. Remove the front bumper (Figure 1).

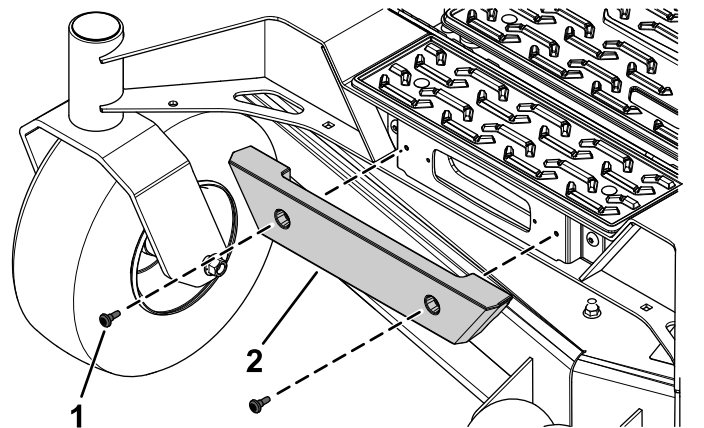


Figure 1

1. Torx-head screw

2. Front bumper

3

Installing the Light and Front Bumper

Parts needed for this procedure:

1	Light
1	Front bumper
2	Hex-washer head screw

Procedure

1. Secure the light to the light bracket using the 2 hex-washer head screws (Figure 2).

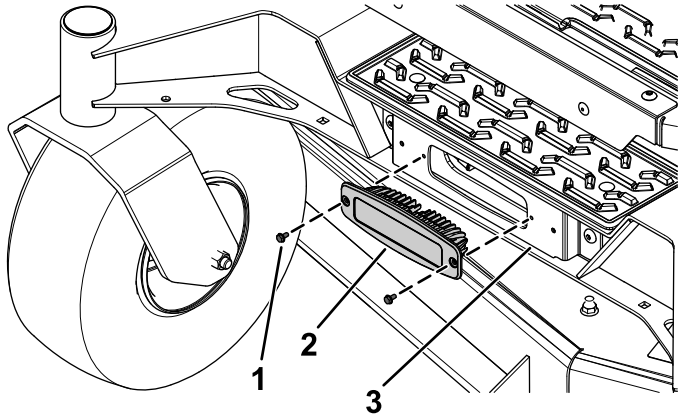


Figure 2

g345493

1. Hex-washer head screw
2. Light
3. Light bracket

2. Secure the front bumper using the previously removed 2 torx-head screws (Figure 3).

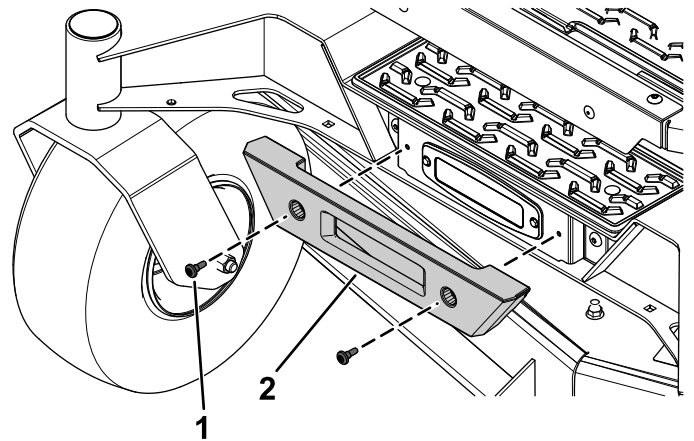


Figure 3

g345491

1. Previously removed 2 torx-head screw
2. Front bumper

4

Removing the Right Side Pod

No Parts Required

Procedure

1. Remove the 4 shoulder screws securing the right side pod (Figure 4).
Retain the 4 shoulder screws for later installation.
2. Remove the right side pod (Figure 4).

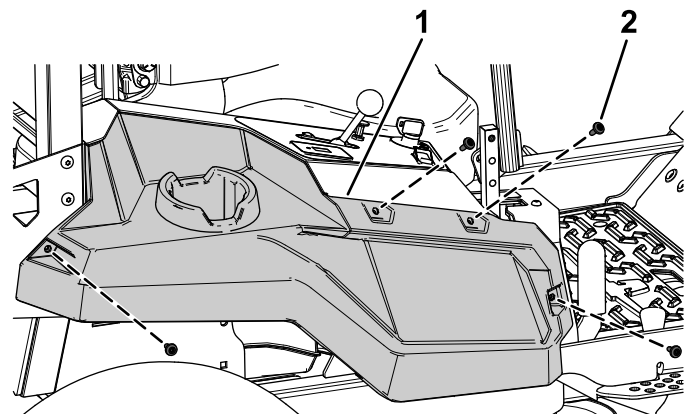


Figure 4

g345495

1. Right side pod
2. Shoulder screw

5

Installing the Headlight Rocker Switch

Parts needed for this procedure:

1	Headlight rocker switch
---	-------------------------

Procedure

1. Cut out the opening in control panel decal for the headlight rocker switch (Figure 5).

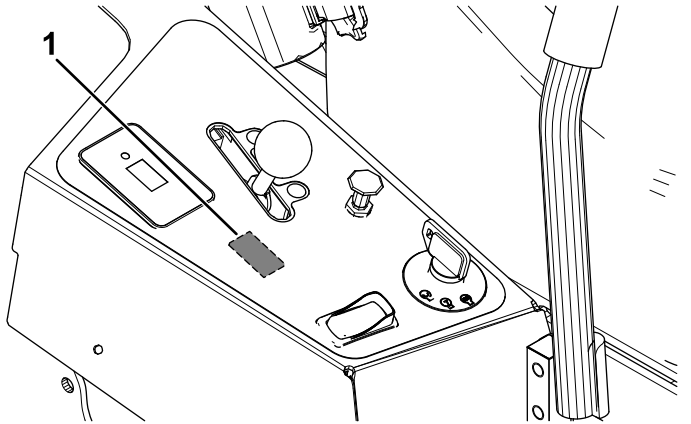


Figure 5

1. Cut out the opening for the switch here.

2. Install the headlight rocker switch into the control panel (Figure 6).

Orient the terminals on the rocker switch toward the rear of the machine.

Orient the ON position of the switch toward the front of the machine and the OFF position toward the rear of the machine.

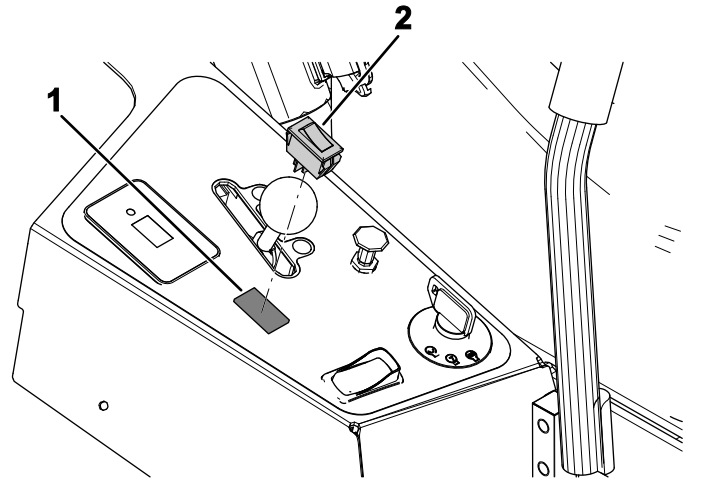


Figure 6

1. Cutout opening
2. Headlight rocker switch

6

Routing and Connecting the Wire Harness

Parts needed for this procedure:

1	Wire harness
---	--------------

Procedure

1. Remove the cap from the auxiliary connector on the machine wire harness ([Figure 7](#)).

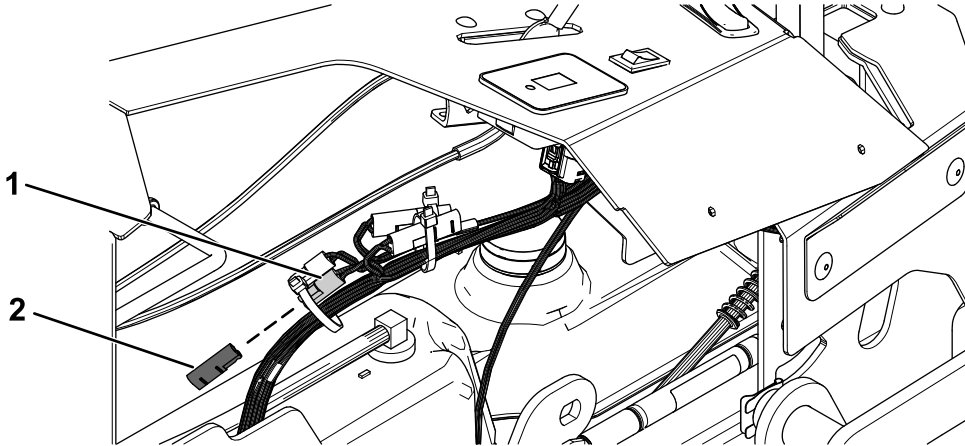


Figure 7

g345638

1. Auxiliary connector

2. Cap

2. Route light kit wire harness along the right side of the machine frame and secure it using the 2 magnetic tie-mount wraps and 2 push-mount fasteners (Figure 8 and Figure 9).
Ensure that you route the light kit wire harness underneath the deck-lift cross shafts as shown in Figure 9.
3. Connect the light kit wire harness to the headlight (Figure 8).
4. Connect the light kit wire harness to the headlight rocker switch (Figure 9).
5. Connect the light kit wire harness to the auxiliary connector on the machine wire harness (Figure 7).

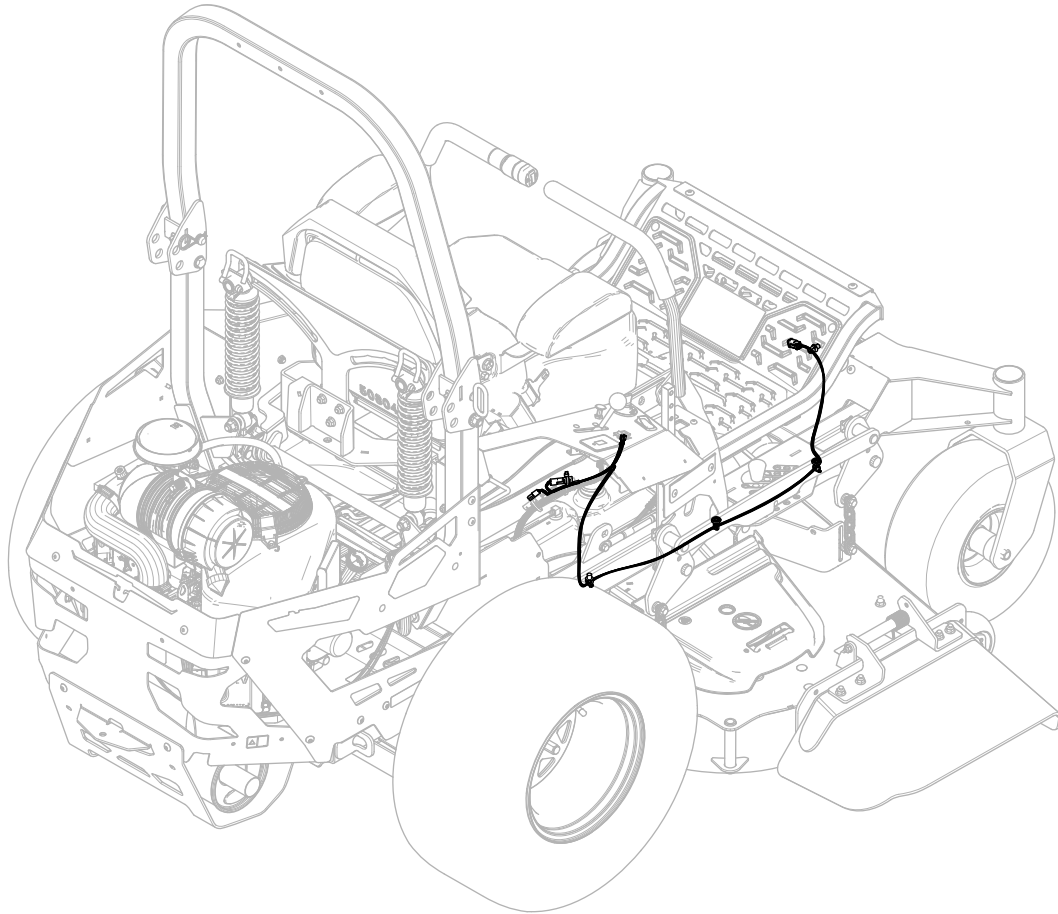
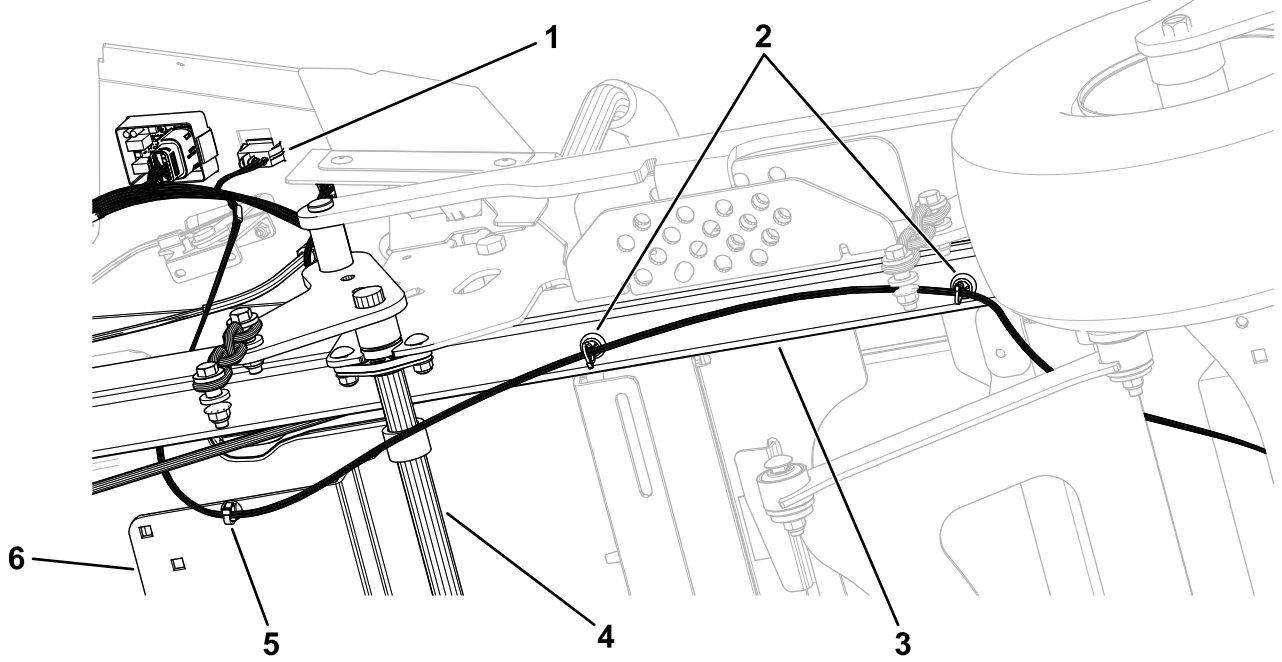


Figure 8

g345639



g345640

Figure 9

- | | | |
|--|--------------------------|------------------------|
| 1. Connection to the headlight rocker switch | 3. Right frame tube | 5. Push-mount fastener |
| 2. Magnetic tie-mount wraps | 4. Deck-lift cross shaft | 6. Fuel-tank support |

7

Installing the Right Side Pod

No Parts Required

Procedure

Secure the right side pod using the previously removed 4 shoulder screws ([Figure 4](#)).

8

Connecting the Battery

No Parts Required

Procedure

Connect the negative-battery cable.