



## 72" Side Discharge Mower

### Groundsmaster® 300 Series

Model No. 30722—210000001 and Up

Model No. 30722TE—210000001 and Up

## Parts Catalog

### Ordering Replacement Parts

To order replacement parts, please supply: the part number, the quantity, and the description of each part desired.

### Understanding Reference Numbers

Each identified part in an illustration has a reference number. The reference number for a part also appears in the parts list, along with other information about the part.

This catalog uses two special reference number formats, one to indicate parts in a service assembly and another to indicate the quantity of a given part in an illustration.

### Service Assembly Reference Numbers

Parts in service assemblies have reference numbers in the form **a:b**. The **a** represents the reference number of the entire service assembly and the **b** represents a sequential number unique to each part within the service assembly.

For example, a wheel assembly might be identified by reference number **6**, the tire by **6:1**, the valve by **6:2**, and the wheel by **6:3**. When you order the assembly identified by reference number **6**, you receive all parts identified by reference numbers **6:1**, **6:2**, and **6:3**. However, you may also order any part individually.

Reference numbers of this type appear in illustrations and in part lists.

### Reference Numbers Indicating Quantity

In an illustration, if a reference number indicates more than one part, the reference number has the form **nX y**. The **n** represents the quantity of the part, the **X** is the multiplication symbol, and the **y** represents the reference number.

For example, in an illustration, the reference number **2X 37** means that two of the parts identified by reference number **37** are indicated.

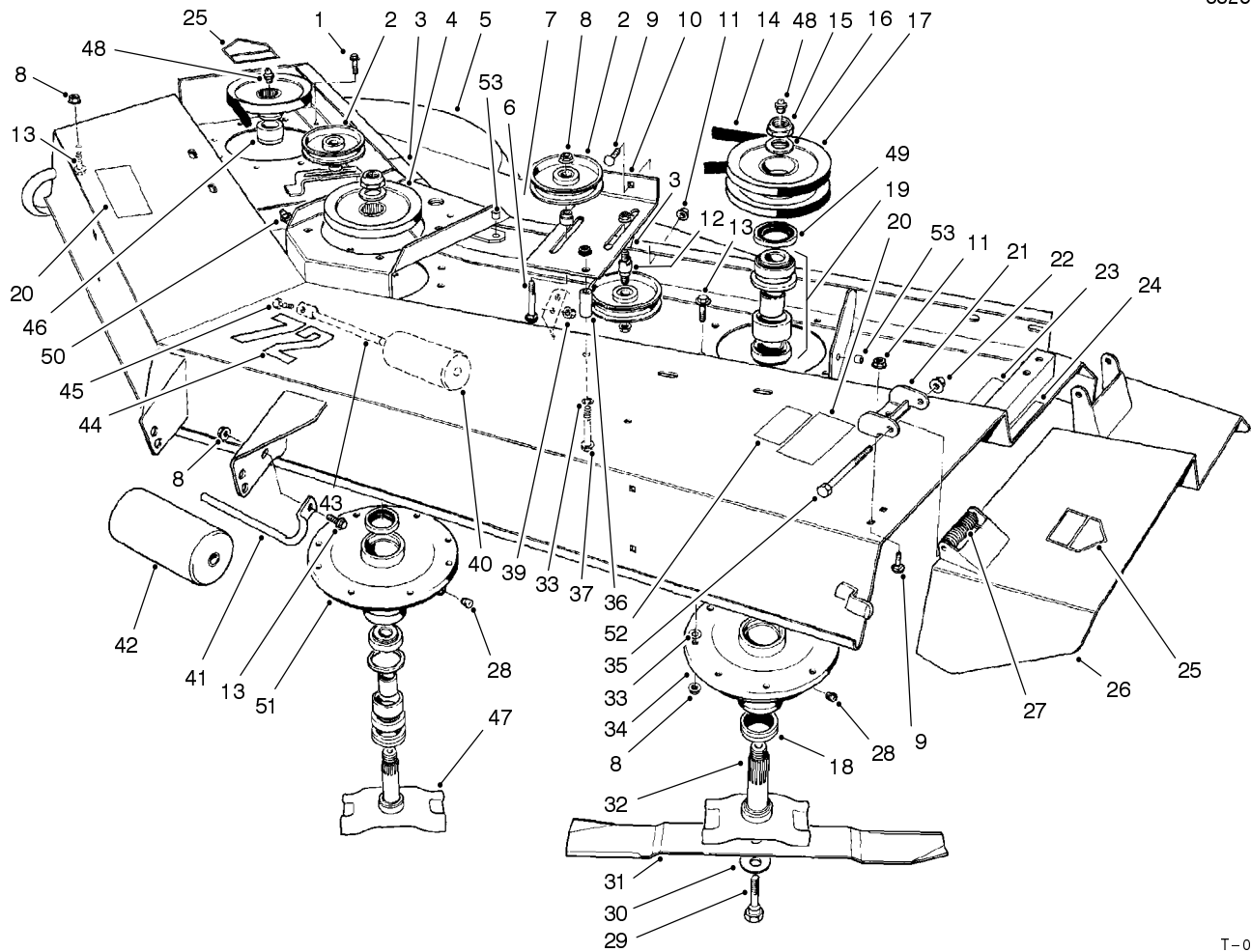
## Contents

<b>Description</b>	<b>Page</b>	<b>Description</b>	<b>Page</b>
Deck Assembly .....	3	Gear Box Assembly No. 104-3441 .....	7
Deck Assembly (Continued) .....	4	Drive Shaft Assembly .....	8
Carrier Frame Assembly .....	5	Foam Filled Caster Wheel Assembly (Optional) .....	9

## Part Description Abbreviations

Part descriptions in this catalog may include the following abbreviations.

<b>Abbreviation</b>	<b>Meaning</b>	<b>Abbreviation</b>	<b>Meaning</b>
AR .....	as required	HYD .....	hydraulic
ASM .....	assembly	INC .....	incorporated
CARR .....	carriage	LH .....	left hand
DEG .....	degrees	NI .....	nylon insert
FH .....	flat head	PPH .....	Phillips pan head
GA .....	gauge	PTH .....	Phillips truss head
HF .....	hex flange	PTO .....	power take off
HH .....	hex head	RH .....	right hand
HHF .....	hex head flange	SFH .....	slotted fillister head
HLH .....	hex lag head	SHH .....	slotted hex head
HJ .....	hex jam	SQH .....	square head
HOC .....	height-of-cut	SHWH .....	slotted hex washer head
HS .....	hex socket	SPH .....	slotted pan head
HSBH .....	hex socket button head	SRH .....	slotted round head
HSFH .....	hex socket flat head	STD .....	standard
HSH .....	hex socket head	TAP .....	self tapping
HWH .....	hex washer head	TTH .....	Torx truss head
HWHTF .....	hex washer head thread forming	WH .....	wing head

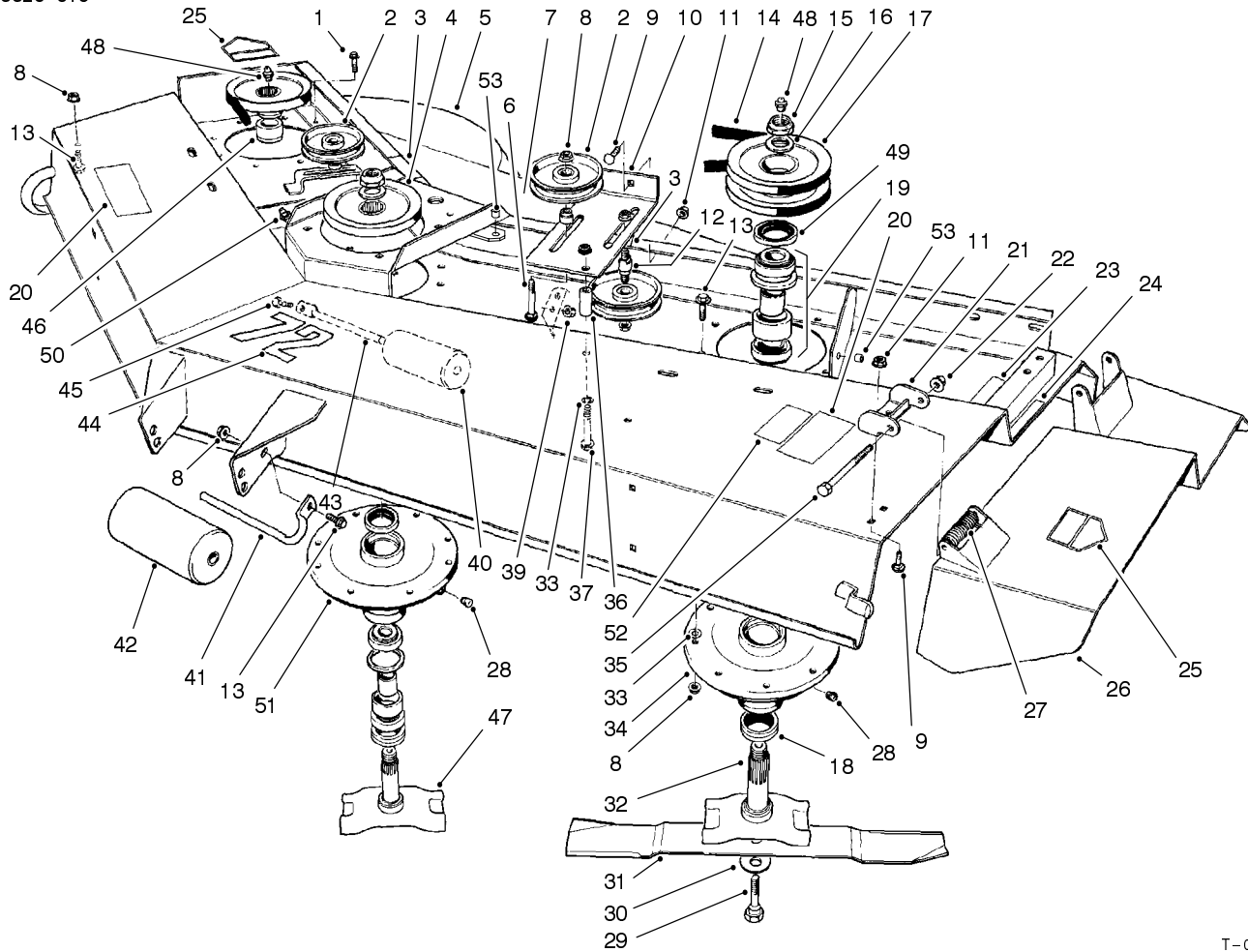


T-0441-2

## Deck Assembly

Ref. No.	Part No.	Qty.	Description
1	3234-11	4	Screw - Hex. Hd. Flange
2	26-1840	3	Idler Pulley
3	100-6578	2	Decal - Danger
4	26-1760	2	Pulley
5	93-7181	1	Deck Assembly (Incl. Ref. #3, 20, 23-25, 44, & 52-53)
5	95-6276	1	Deck Asm. (Europe) (Incl. Ref. #3, 20, 23-25, 44, & 52-53)
6	3231-29	2	Bolt - Carriage
7	26-1860	2	Spacer - Idler Pulley
8	32128-21	33	Nut - Flange
9	3231-27	6	Bolt - Carriage
10	26-1870-03	1	Idler Mount L.H.
11	3290-357	6	Nut - Flange
12	26-1850	1	Stud - Idler
13	3234-1	24	Screw - Hex. Hd. Flange
14	21-0890	3	V-Belt
15	3296-49	3	Nut
16	3-8514	3	Washer
17	84-2060	1	Pulley L.H.

Ref. No.	Part No.	Qty.	Description
18	253-138	6	Seal - Oil
19	49-8320	3	Bearing & Spacer Set
20	93-7824	2	Decal - Danger
21	51-1530-01	2	Hinge Bracket
22	32128-23	2	Nut - Lock Flange
23	93-7817	1	Decal - Torque
24	100-6553	1	Decal - Danger
25	43-8480	1	Decal - Danger
25	100-6582	2	Decal - Danger (Europe)
26	51-1470-01	1	Deflector
27	51-1550	2	Spring
28	285-17	4	Plug
29	26-1820	3	Screw - Cap Hex. Hd.
30	26-1990	3	Washer - Belleville



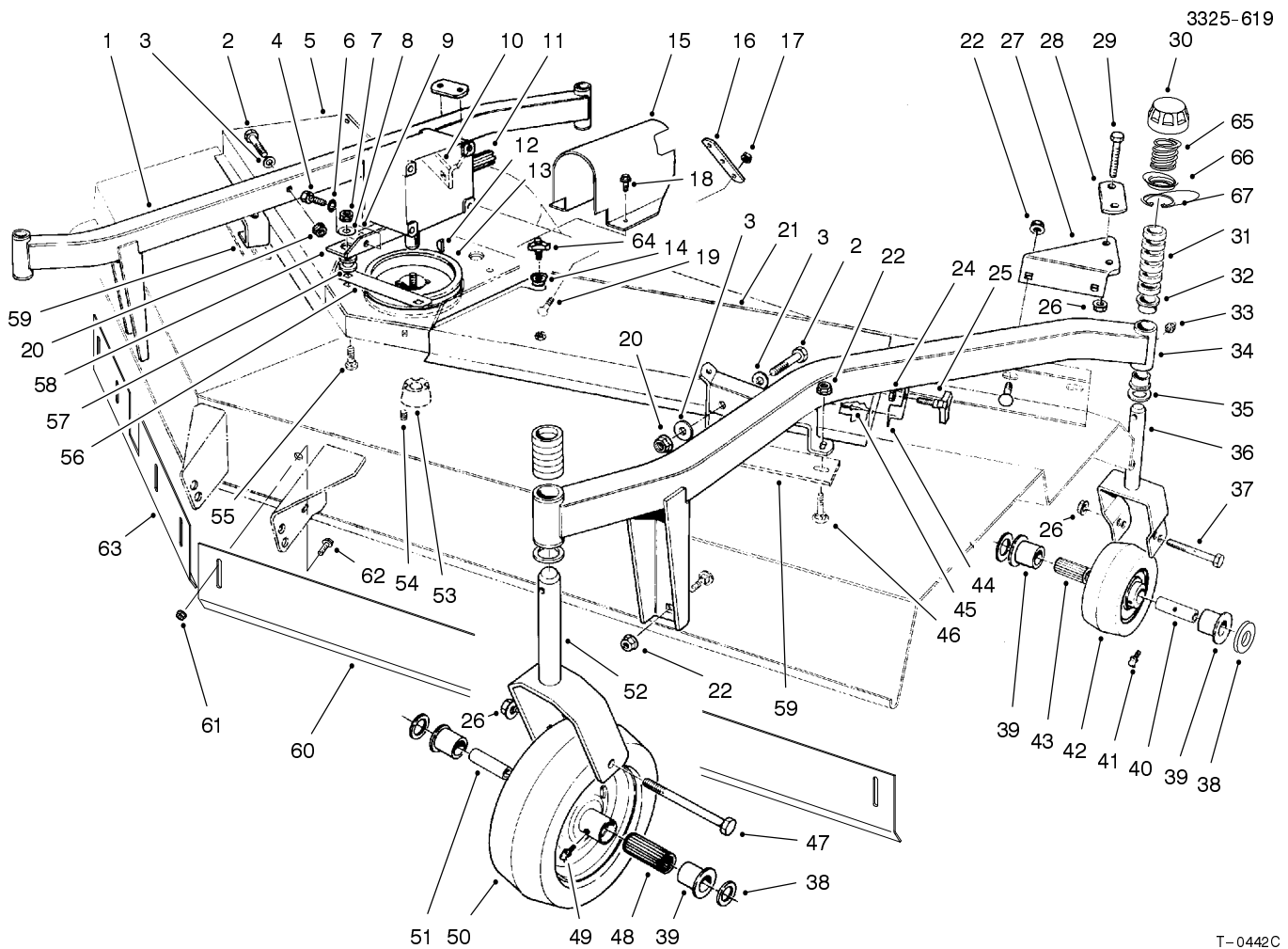
T-0441-2

### Deck Assembly (Continued)

Ref. No.	Part No.	Qty.	Description
31	29-5530	3	Blade
32	84-2070	2	Spindle - Outer
33	3256-24	A/R	Washer
34	84-2020	2	Outer Spindle Housing
35	325-17	2	Screw - Cap Hex. Hd.
36	26-1880	1	Spacer - Idler Mount
37	323-12	1	Screw - Cap Hex. Hd.
39	32128-25	2	Nut - Lock Flange
40	36-1740	2	Roller - Deck
41	68-6840	1	Shaft - Roller
42	68-6710	1	Roller - Deck
43	62-4480	2	Rod - Roller
44	57-0280	1	Decal - 72"
45	322-4	2	Screw - Cap. Hex Hd.
46	84-2090	1	Spacer R.H. Spindle
47	84-5370	1	Spindle Center
48	302-5	3	Fitting - Grease
49	253-154	3	Seal - Oil
50	302-52	1	Fitting - Grease
51	84-2080	1	Center Spindle Housing
52	93-7809	1	Decal - Warning
53	3290-469	4	Nut - Insert
*54	23-2410	3	Blade - High Sail (Opt.)
*	95-3087	1	Blade & Belt Kit

Ref. No.	Part No.	Qty.	Description
			(Incl. Ref. #14 & 31)
*	95-3094	1	Blade & Belt Kit (Hi-Lift) (Incl. Ref. #14 & 54)
*	95-3095	1	Spindle Asm. Kit - RH (Incl. Ref. #1, 4, 8, 13, 15, 16, 18-19, 28, 32-34, 46, & 48-49)
*	95-3090	1	Spindle Asm. Kit - Center (Incl. Ref. #4, 8, 13, 15-16, 18-19, 28, 33 & 47-49)
*	95-3089	1	Spindle Asm. Kit - LH (Incl. Ref. #1, 8, 13, 15-19, 28, 32-34 & 48-49)

\*Not Illustrated

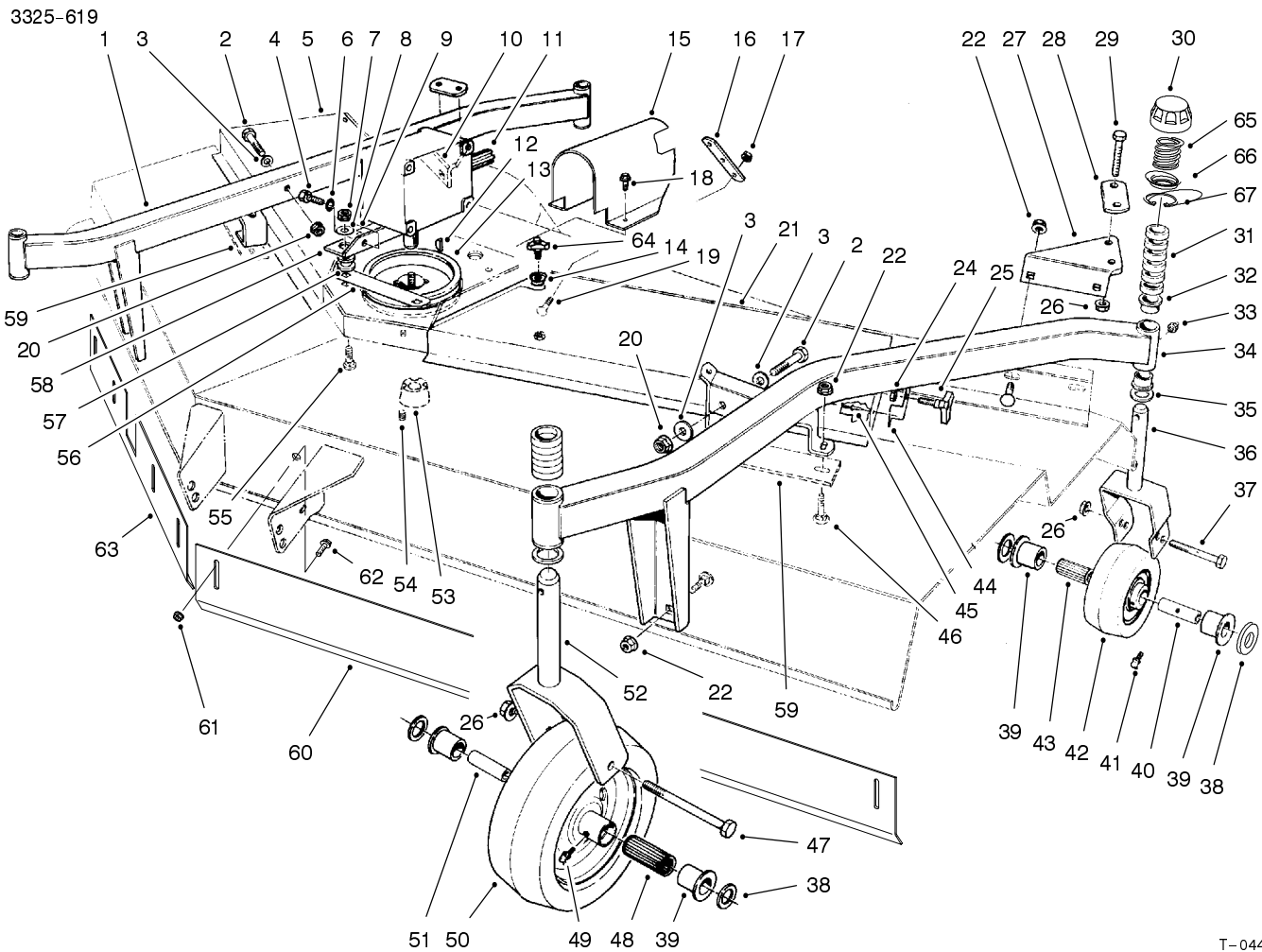


T-0442C

## Carrier Frame Assembly

Ref. No.	Part No.	Qty.	Description
1	26-1490	1	Caster Arm R.H. (Incl. Ref. #32 & 33)
2	324-12	4	Screw - Cap Hex Hd.
3	66-6480	4	Washer - Flat
4	323-4	4	Screw - Cap Hex Hd.
5	14-5869	1	Cover - Deck R.H. (Incl. Ref. #24, 25, 44-45)
6	3253-21	4	Washer - Lock
7	32128-21	4	Nut - Flange
8	63-8410	4	Washer
9	93-6697	1	Decal - Lube
10	39-3340-01	1	Bracket - Clamp
11	104-3441	1	Gear Case Assembly
12	3257-5	1	Key - Woodruff
13	26-1400	1	Pulley - Deck
14	66-6310	2	Washer - Cup
15	93-9838-03	1	Shroud - Drive Shaft
16	21-3770-01	1	Strap - Lift
17	3290-357	2	Nut - Flange
18	32104-82	2	Screw - Cap Self-Tapping
19	3231-27	2	Bolt - Carriage
20	32128-42	4	Nut - Flange
21	14-5879	1	Cover - Deck L.H. (Incl. Ref. #24, 25,

Ref. No.	Part No.	Qty.	Description
22	32128-49	12	Nut - Flange 44-45)
24	3296-59	4	Nut - Lock
25	27-4570	2	Knob
26	32128-23	8	Nut - Lock Flange
27	39-7450-01	1	Bracket - Clamp
28	39-3330-01	2	Bar - Caster Clamp
29	325-14	4	Screw - Cap Hex Hd.
30	92-8861	4	Cap - Height-of-Cut
31	63-0070	24	Spacer - 1/2"
*	27-1040	48	Spacer - 1/4"
32	94-1291	8	Bushing - Special
33	302-5	4	Fitting - Grease
34	26-1430	1	Caster Arm (Incl. Ref. #32 & 33)
35	3-6781	8	Washer
36	75-9680-01	2	Fork - Caster, Rear
37	325-18	2	Screw - Cap Hex Hd.
38	3256-6	2	Washer - Flat
39	62-5580	8	Bushing
40	63-1770	2	Spanner - Rear
41	302-11	2	Fitting - Grease
42	63-8400	2	Wheel - Caster Rear (Incl. Ref. #39, 41 & 43)
43	63-8580	2	Bearing - Roller



T-0442C

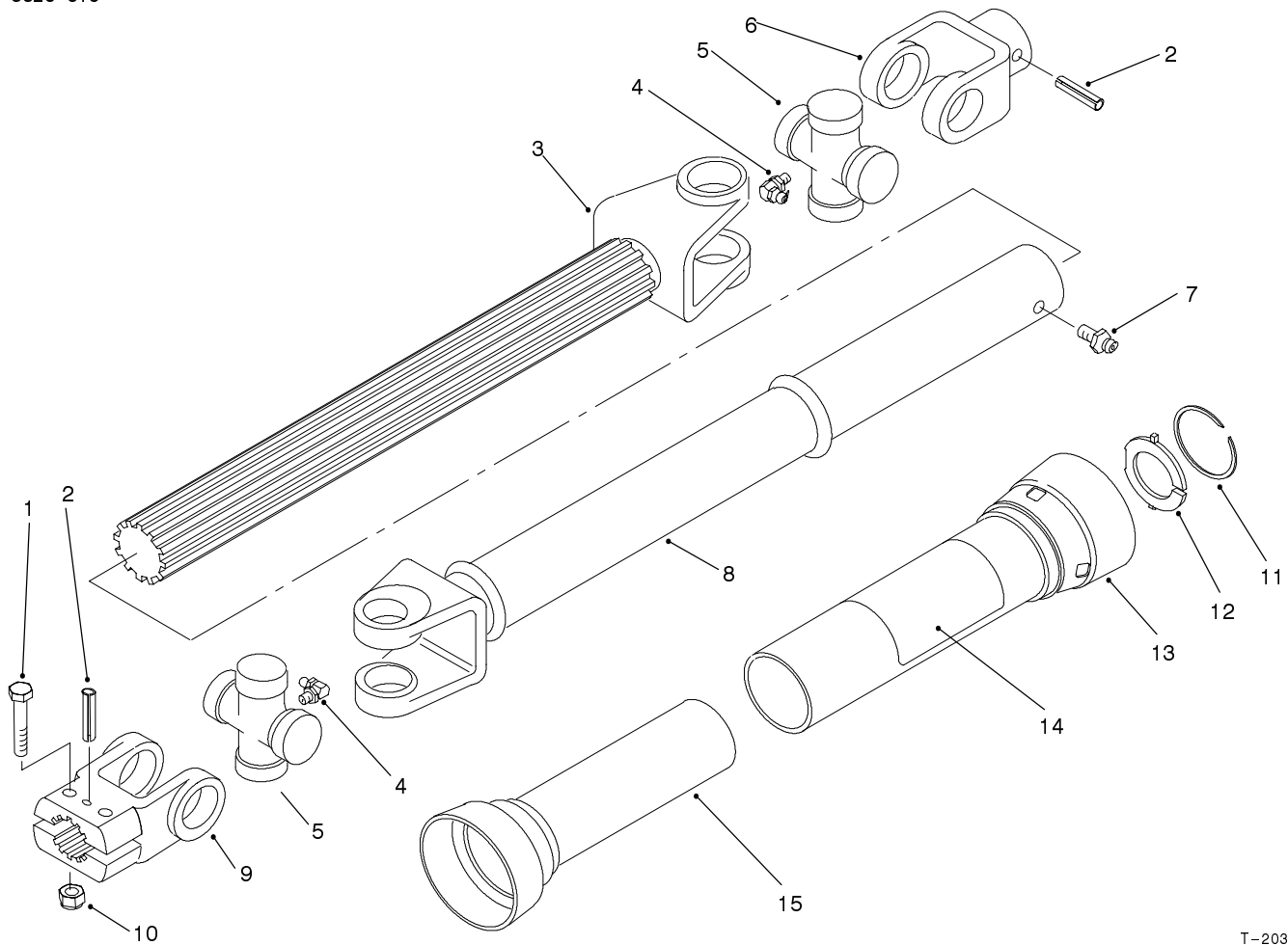
## Carrier Frame Assembly (Continued)

Ref. No.	Part No.	Qty.	Description
44	66-1260	2	Bracket - Knob
45	3269-5	4	Rivet - Pop
46	3233-2	12	Bolt - Carriage
47	325-22	2	Screw - Cap Hex. Hd.
48	83-4740	2	Bearing - Roller
49	302-40	2	Fitting - Grease
50	92-1655	2	Wheel - Caster - Front (Incl. Ref. #39, 48 & 49)
51	62-4340	2	Spanner - Front
52	26-1530-01	2	Fork - Caster, Front
53	23-1640	1	Bushing - TaperLock (Incl. Ref. #54)
54	3247-4	2	Screw - Set
55	3231-26	4	Bolt - Carriage
56	68-9890-01	1	Cover - Gear Box Front
57	63-9750	4	Mount - Isolation
58	68-8560-03	2	Bracket - Gear Box
59	26-1190-01	2	Plate - Reinforcement
60	93-6605-01	1	Baffle - LH (Europe)
61	32128-20	7	Nut - Lock, Flange Hd. (Europe)
62	3234-5	7	Screw - HH (Europe)

Ref. No.	Part No.	Qty.	Description
63	93-6604-01	1	Baffle - RH (Europe)
64	27-4570	2	Knob
64	323-7	2	Screw - HH (Europe)
65	92-5584	4	Spring - Compression
66	92-5583	4	Washer - Cap
67	92-5581	4	Ring - Retaining
*	92-8862	4	Asm. - Cap, Height-of-Cut (Incl. Ref. #30 & 65-67)
*	12-1509	2	Pneumatic Tire & Wheel (Optional)
*	95-3082	1	Front Castor Wheel Asm. (Incl. Ref. #26, 38, 47, & 50-51)
*	95-3084	1	Rear Castor Wheel Asm. (Incl. Ref. #26, 37-38, 40 & 42)
*	95-3086	1	Castor Wheel Set (4 Wheels) (Incl. Ref. #26, 37-38, 40, 42, 47 & 50-51)

\*Not Illustrated





T-2038

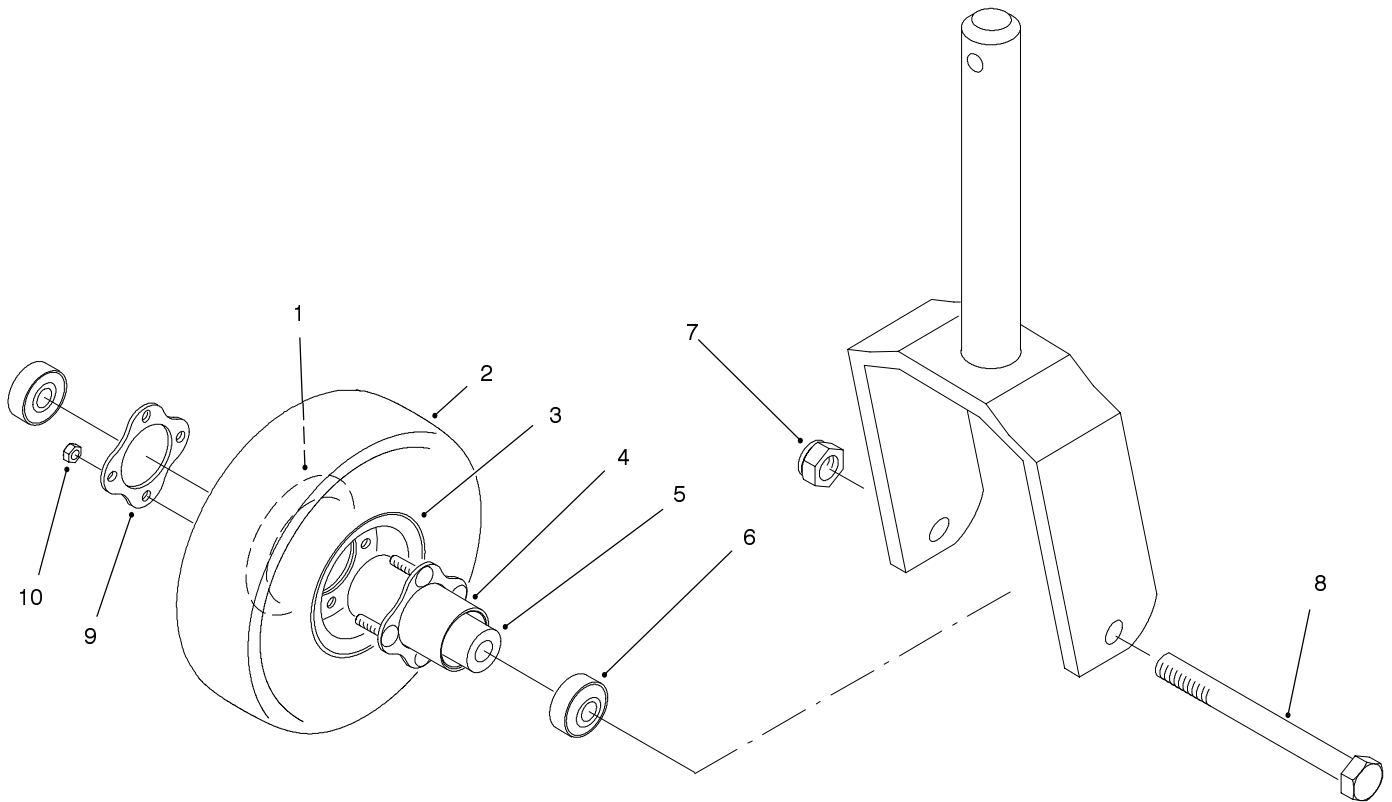
## Drive Shaft Assembly

Ref. No.	Part No.	Qty.	Description
1	322-9	2	Screw - Cap Hex. Hd.
2	32121-34	2	Pin - Roll
3	93-9963	1	Slip Yoke - Shaft
4	62-3820	2	Fitting - Grease
5	54-9180	2	U-Joint
6	62-3800	1	Yoke - End
7	302-58	1	Fitting - Grease
8	93-9966	1	Slip Yoke - Tube
9	54-9040	1	Yoke - End, Split
10	3296-29	2	Nut - Lock
11		1	Ring - Retaining
12		1	Bushing - Nylon
13	93-9985	1	Guard - Outer (Europe) (Incl. Ref. #11-12 & 14)
14	93-7283	1	Decal - Danger (Europe)
15	93-9965	1	Guard - Inner (Europe) (Incl. Ref. #11-12)
*	93-9958	1	Kit - Repair, Nylon (Incl. Ref. #11-12)
*	93-9996	1	Drive Shaft Assembly (without guards) (Incl. Ref. #3-9)

Ref. No.	Part No.	Qty.	Description
*	93-9986	1	Drive Shaft Assembly (with guards) (Europe) (Incl. Ref. #3-9, 13 & 15)
*	92-4663	1	Slip Yoke Shaft Assembly (Incl. Ref. #3-6)

\* Not Illustrated





T-2653-1

## Foam Filled Caster Wheel Assembly (Optional)

Ref. No.	Part No.	Qty.	Description
1	95-2741	2	Rim - Wheel
2	93-4243	2	Tire - 10"
3	93-4239	2	Rim - Wheel
4	93-5980	2	Hub
5	93-4241	2	Spacer - Bearing
6	93-4237	2	Bearing - Castor
7	3296-53	2	Nut - Lock
†8	327-24	2	Screw - Cap Hex. Hd.
9	93-4242	2	Plate
10	32128-16	8	Nut - Hex. Lock
*	93-5973	2	10" Foam Filled Wheel Asm. (Incl. Ref. #1-6 & 9-10)

Ref. No.	Part No.	Qty.	Description

\* Not Illustrated

† Must drill out hole in caster fork to 5/8 diameter





