



Jumper Kit

Greensmaster® 3360 or 3370 eTriFlex Traction Unit with Three-Wheel-Drive Kit

Model No. 139-8599

Installation Instructions

Installation

Loose Parts

Use the chart below to verify that all parts have been shipped.

Procedure	Description	Qty.	Use
1	No parts required	–	Prepare the machine.
2	Harness bracket Clip connector	1 1	Installing the harness bracket.
3	Wire harness Cable tie	1 1	Connect the kit wire harness to the machine wire harness and the gearbox motor.
4	No parts required	–	Engage 3-wheel-drive mode.
5	No parts required	–	Complete the installation.

1

Preparing the Machine

No Parts Required

Procedure

1. Park the machine on a level surface.
2. Engage the parking brake.
3. Lower the cutting units.
4. Shut off the machine and remove the key.
5. Disconnect the main-power connectors; refer to your machine *Operator's Manual*.

2

Installing the Harness Bracket

Parts needed for this procedure:

1	Harness bracket
1	Clip connector

Removing the Existing Harness Bracket

1. Disconnect the machine-wire-harness connectors from the motor connectors ([Figure 1](#)).



Installing the New Harness Bracket

1. Secure the clip connector to the harness bracket (Figure 3).

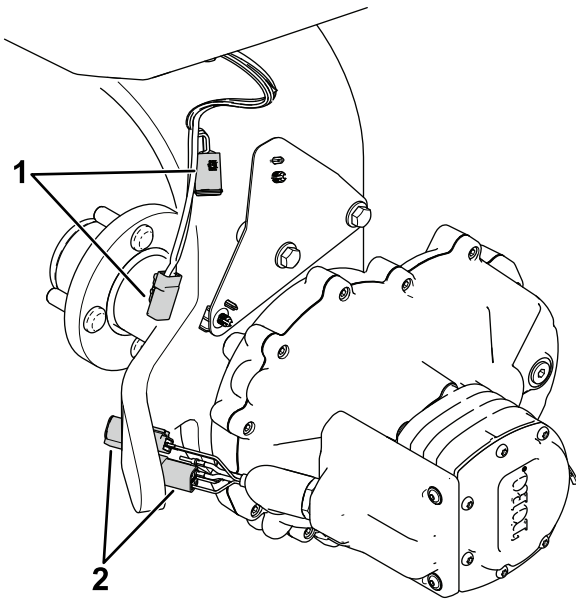


Figure 1

g301663

1. Machine-wire-harness connectors
2. Motor connectors

2. Remove the hardware that secures the harness bracket to the caster fork (Figure 2). Retain the hardware.

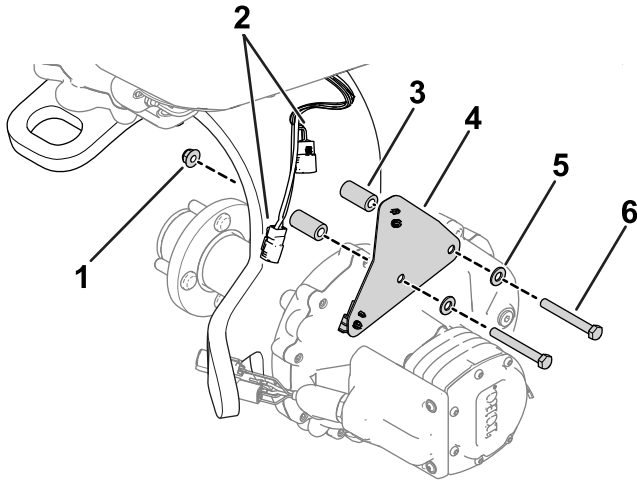


Figure 2

g344383

1. Flange nut
2. Machine-wire-harness connections
3. Spacer
4. Harness bracket
5. Washer
6. Bolt

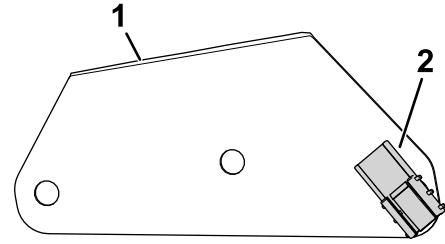


Figure 3

g344247

1. Harness bracket
2. Clip connector

2. Use the previously removed hardware to secure the new harness bracket to the caster fork (Figure 4).

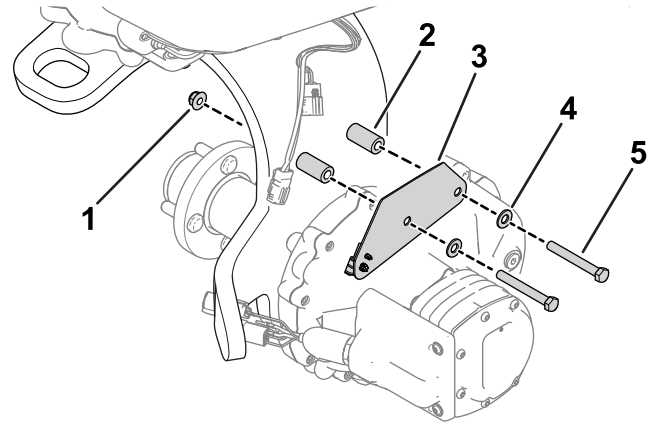


Figure 4

g344250

1. Flange nut
2. Spacer
3. Harness bracket
4. Washer
5. Bolt

3

Connecting the Kit Wire Harness

Parts needed for this procedure:

1	Wire harness
1	Cable tie

Procedure

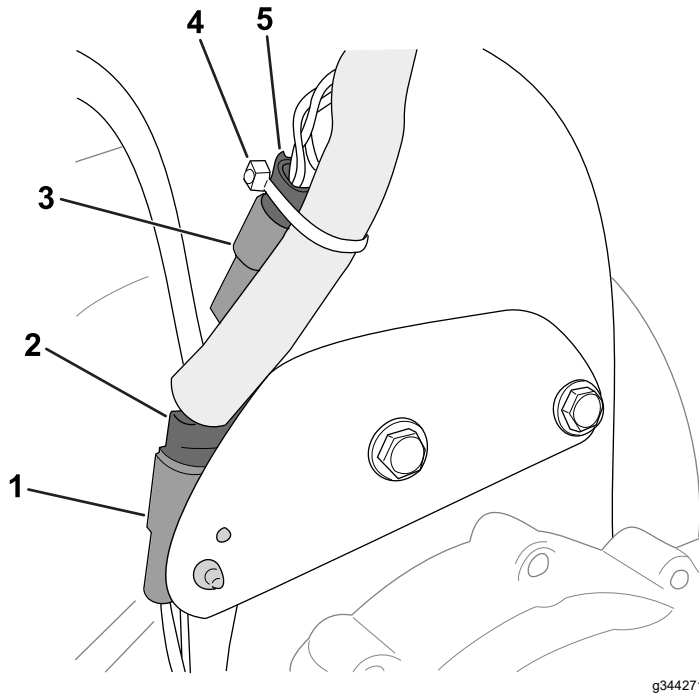


Figure 5

- | | |
|--|--|
| 1. 2-pin connector (gearbox motor) | 4. Cable tie |
| 2. 2-socket connector (kit wire harness) | 5. 4-socket connector (kit wire harness) |
| 3. 4-pin connector (gearbox motor) | |

1. Connect the 2-pin connector of the motor gearbox to the clip connector on the harness bracket (Figure 5).
2. Connect the motor connectors to the kit-wire-harness connectors (Figure 5):
 - 2-pin connector of the motor gearbox to the 2-socket connector of the kit wire harness
 - 4-pin connector of the motor gearbox to the 4-socket connector of the kit wire harness

3. Raise the hood.
4. Route the remaining kit-wire-harness connectors towards the steering motor (Figure 6)

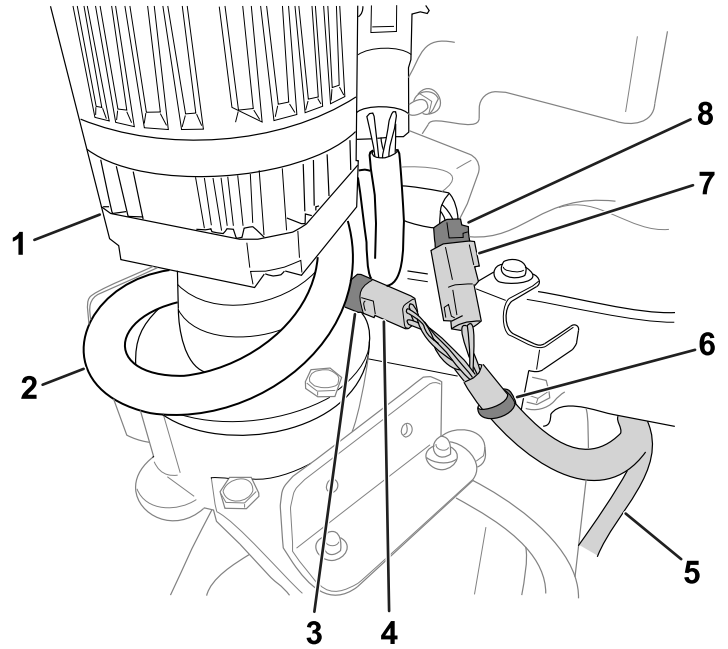


Figure 6

- | | |
|--|--|
| 1. Steering column | 5. Kit wire harness |
| 2. Machine wire harness | 6. Push-mount fastener |
| 3. 4-socket connector (machine wire harness) | 7. 2-socket connector (machine wire harness) |
| 4. 4-pin connector (kit wire harness) | 8. 2-pin connector (kit wire harness) |

5. Connect the push-mount fastener on the kit wire harness to the bracket as shown in Figure 6.
6. Connect the kit-wire-harness connectors to the machine-wire-harness connectors (Figure 6):
 - 2-socket connector of the kit wire harness to the 2-pin connector of the motor gearbox
 - 4-socket connector of the kit wire harness to the 4-pin connector of the motor gearbox
7. Use a cable tie to secure the connectors shown in Figure 5 to the kit wire harness.
8. Wrap the extra machine wire harness slack around the steering motor as shown in Figure 6.
9. Close the hood.

4

Engaging 3-Wheel-Drive Mode

No Parts Required

Procedure

3-wheel-drive mode should automatically enable when you install the gearbox-wire-harness connections to the machine wire harness.

To ensure that 3-wheel-drive mode is activated, navigate to the 3WD KIT option in the SETTINGS menu of your InfoCenter. The item selected/active icon

indicates that 3-wheel-drive mode is activated.

5

Completing the Installation

No Parts Required

Procedure

Connect the main-power connectors; refer to your machine *Operator's Manual*.