



Parts Catalog

RotaQuake 630

Model No. 46454—Serial No. 321000001 and Up



Ordering Replacement Parts

To order replacement parts, please supply the part number, the quantity, and the description of each part desired.

Understanding Reference Numbers

Each identified part in an illustration has a reference number. The reference number for a part also appears in the parts list, along with other information about the part.

This catalog uses two special reference number formats, one to indicate parts in a service assembly and another to indicate the quantity of a given part in an illustration.

Service Assembly Reference Numbers

Parts in service assemblies have reference numbers in the form a:b. The a represents the reference number of the entire service assembly and the b represents a sequential number unique to each part within the service assembly.

For example, a wheel assembly might be identified by reference number 6, the tire by 6:1, the valve by 6:2, and the wheel by 6:3. When you order the assembly identified by reference number 6, you receive all parts identified by reference numbers 6:1, 6:2, and 6:3. However, you may also order any part individually. Reference numbers of this type appear in illustration and in parts lists.

Reference Numbers Indicating Quantity

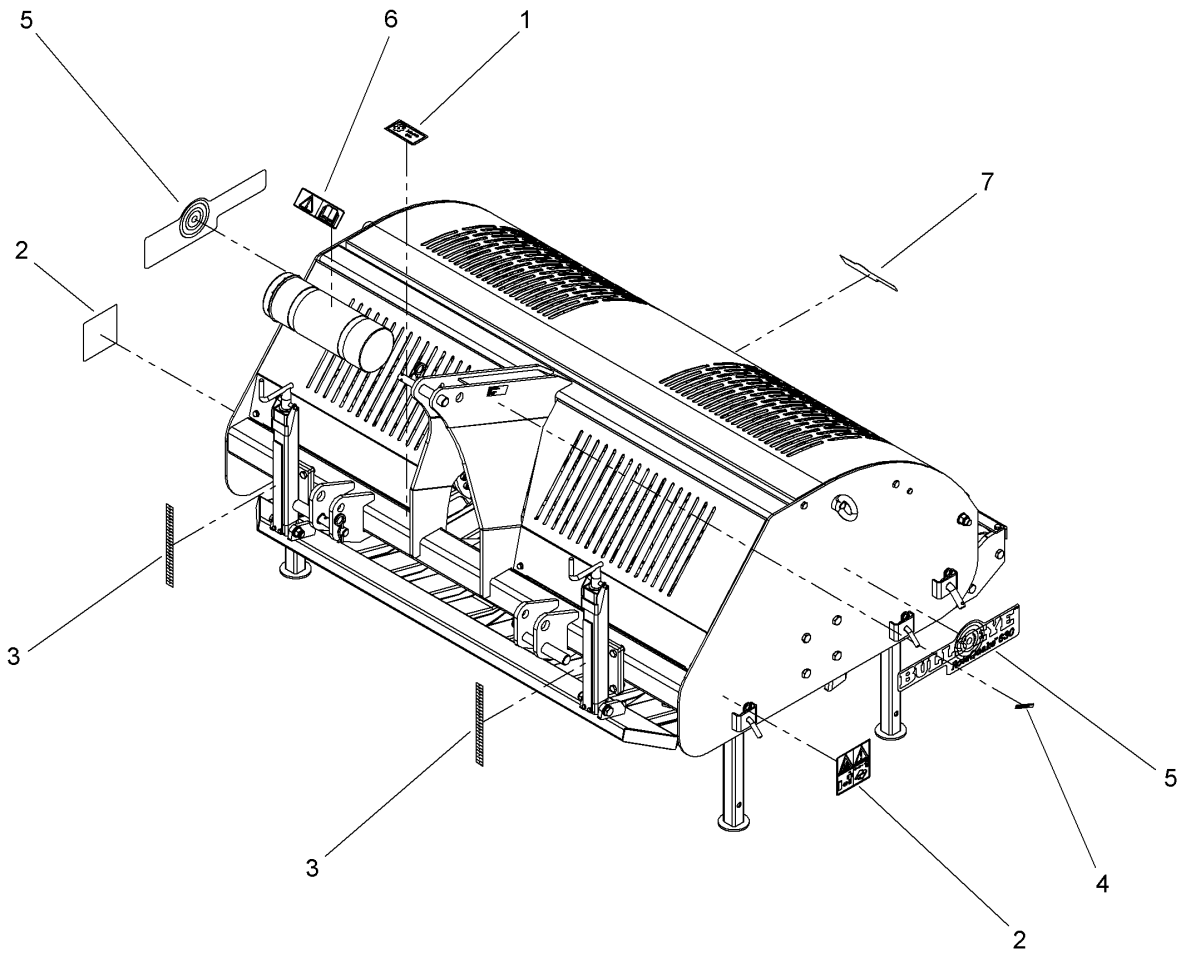
In an illustration, if a reference number indicates more than one part, the reference number has the form nX y. The n represents the quantity of the part, the X is the multiplication symbol, and the y represents the reference number.

For example, in an illustration, the reference number 2X 37 means that two of the parts identified by reference number 37 are indicated.

Contents

Decal Assembly	4
Covers Assembly	6
Frame Assembly.....	8
Roller and Skid Assembly.....	10
Knives Assembly	12
Gearbox Assembly.....	14
Power Take Off Assembly.....	16

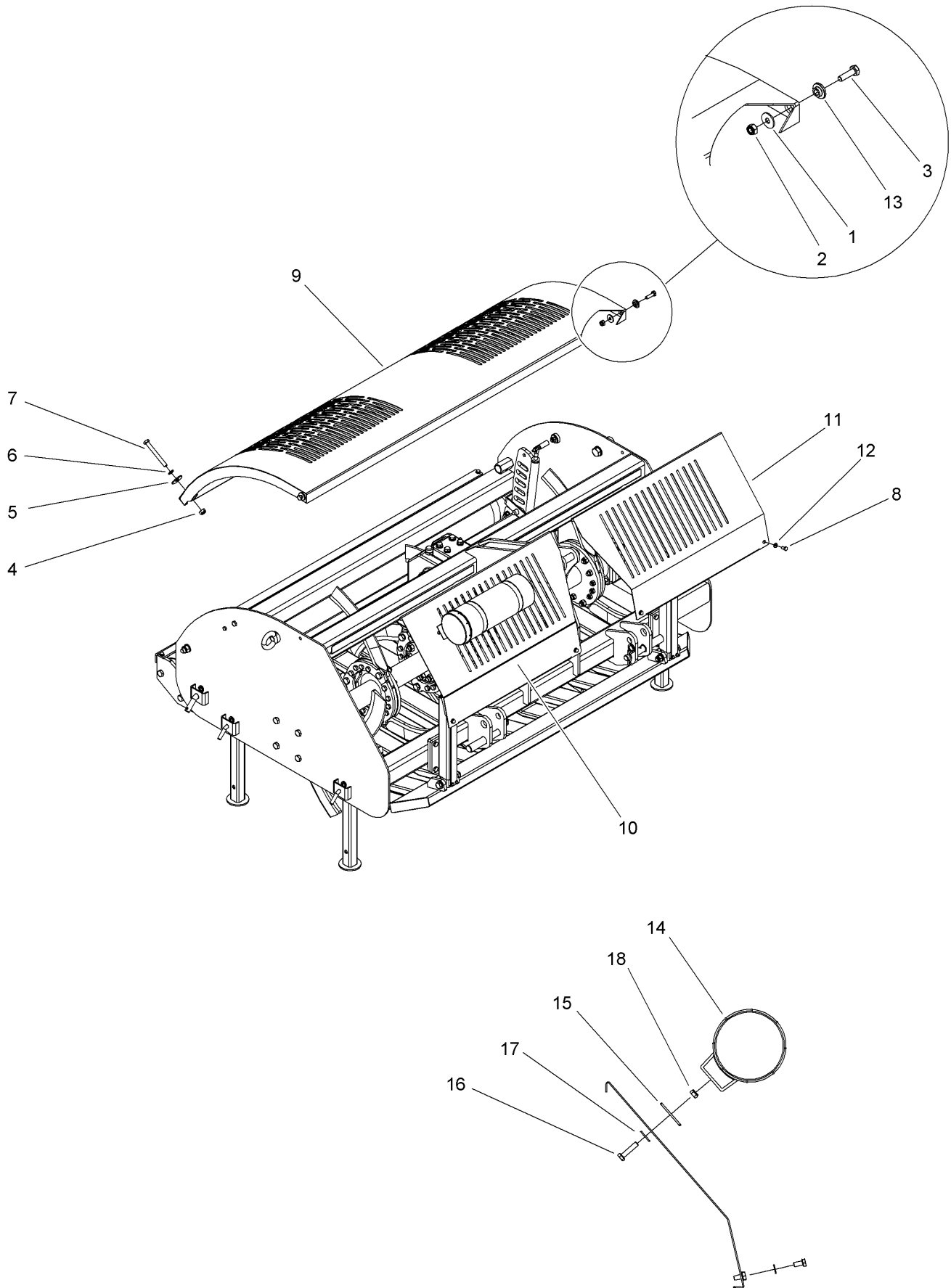
Decal Assembly



Decal Assembly (continued)

<i>Ref.</i>	<i>Part Number</i>	<i>Qty.</i>	<i>Description</i>	<i>Ref.</i>	<i>Part Number</i>	<i>Qty.</i>	<i>Description</i>
1	144-8256	1	Decal PTO 350 540	5	136-3673	2	Decal-Rotaquake 630
2	144-8257	2	Decal-Safety Vs	6	105-0698	1	Decal-Caution
3	144-8258	2	Decal-Ruler	7	136-3674	1	Decal-Rotaquake 630
4	133-8061	1	Decal-Warning				

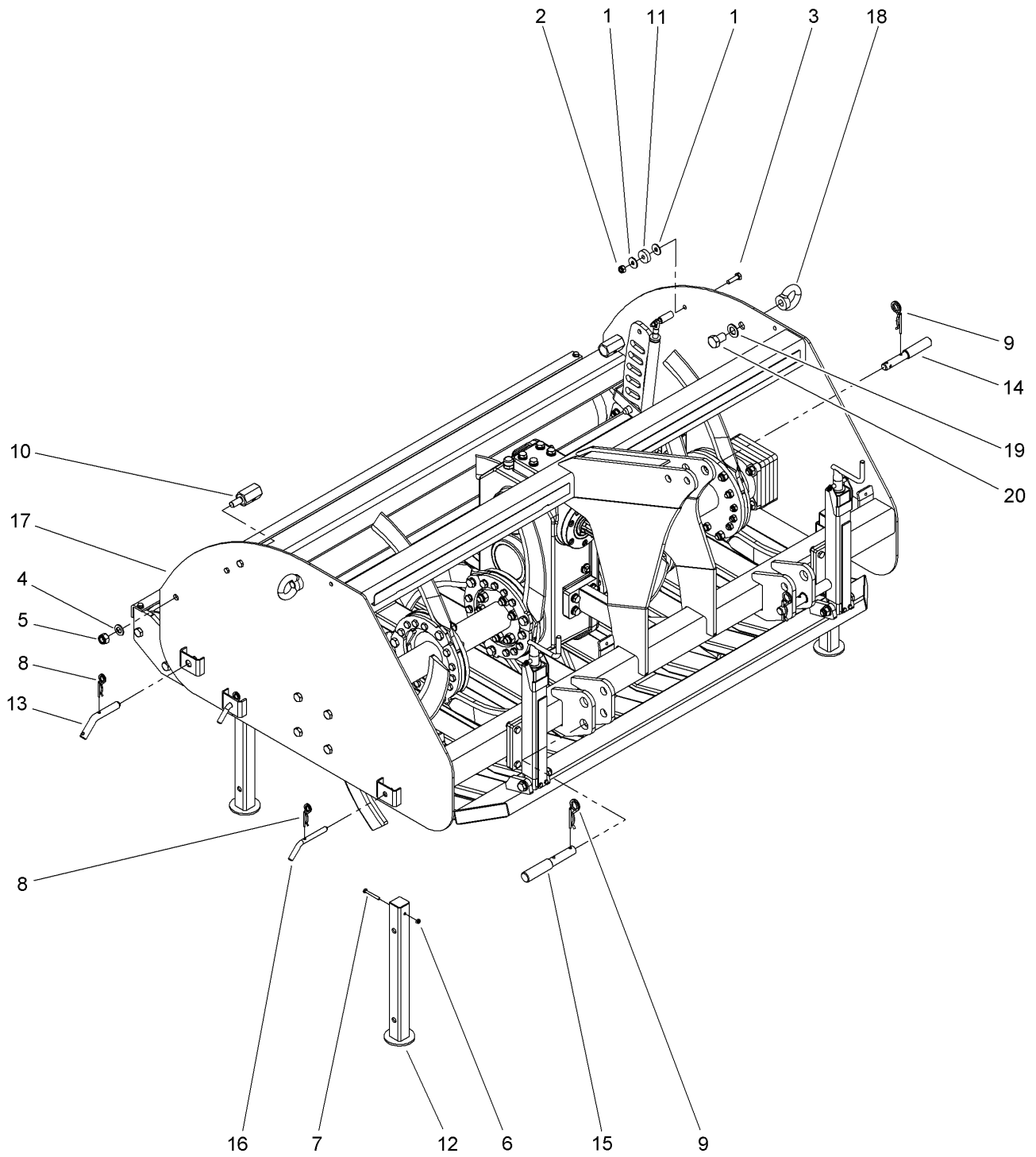
Covers Assembly



Covers Assembly (continued)

<i>Ref.</i>	<i>Part Number</i>	<i>Qty.</i>	<i>Description</i>	<i>Ref.</i>	<i>Part Number</i>	<i>Qty.</i>	<i>Description</i>
1	144-7946	2	Large Washer M10 - Din 9021	10	144-7804	1	Front Cover Right
2	144-7717	2	Nut, Self Locking - M 10	11	144-7805	1	Front Cover Left
3	144-7947	2	Bolt M10 X 35 - ISO 4017	12	144-8260	4	Washer
4	144-7705	2	Nut, Self Locking - M 12	13	144-8261	2	Pivot Bushing
5	144-8169	2	Large Washer M14 - Din 9021	14	144-8128	1	Toolbox Complete
6	144-7954	2	Spring Washer M12 - Din 127	15	144-8129	2	Toolbox Contraplate
7	144-8259	2	Bolt M12 X 110 - ISO 4017	16	144-8130	2	Bolt M8 X 35 - ISO 4017
8	144-7931	4	Bolt M8 X 16 - ISO 4017	17	144-8013	2	Washer-Large M8 - Din 9021
9	144-7806	1	Cover Rq630	18	144-7944	2	Self Lock Nut M8 - ISO 10511

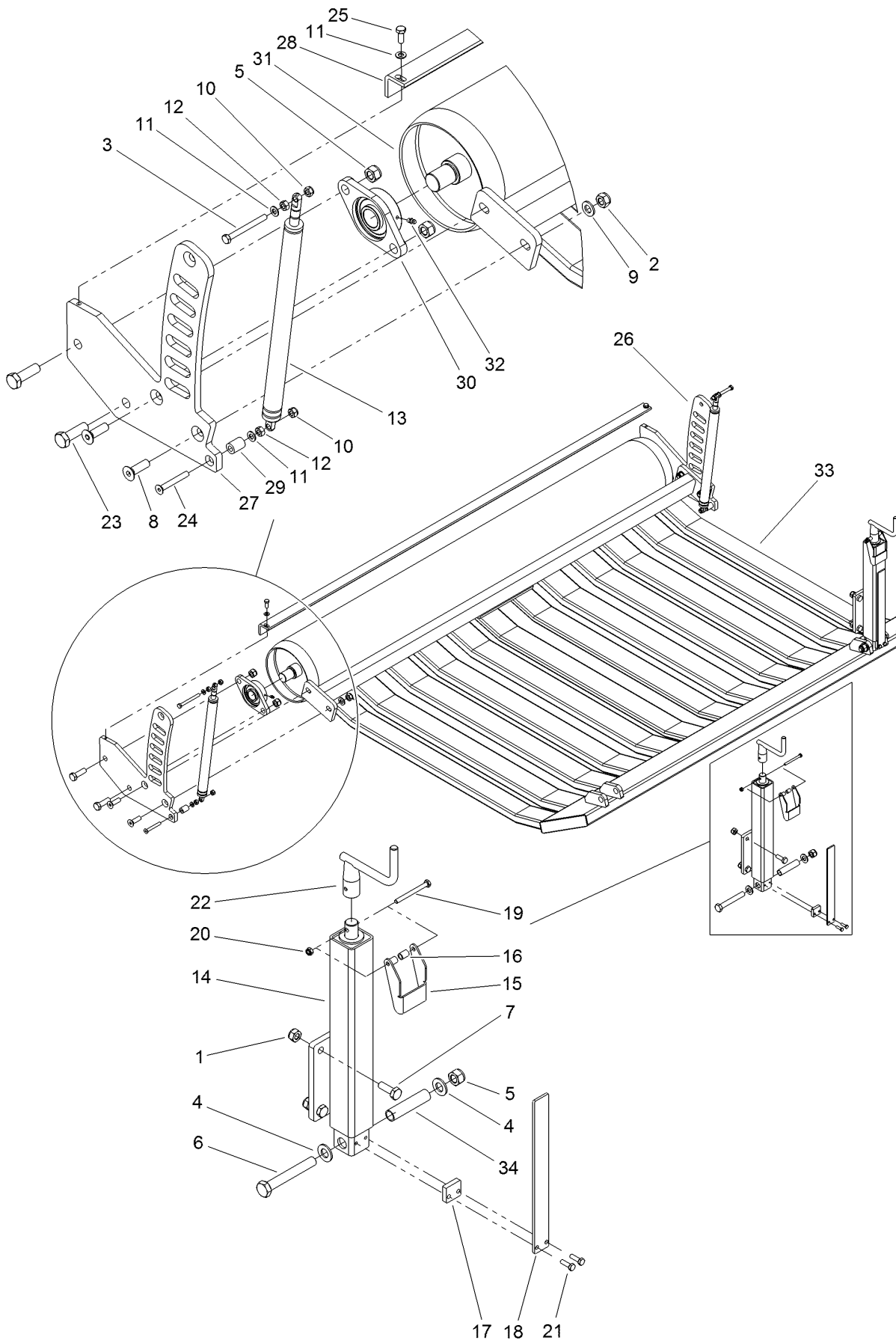
Frame Assembly



Frame Assembly (continued)

<i>Ref.</i>	<i>Part Number</i>	<i>Qty.</i>	<i>Description</i>	<i>Ref.</i>	<i>Part Number</i>	<i>Qty.</i>	<i>Description</i>
1	144-7946	4	Large Washer M10 - Din 9021	10	144-8262	2	Cover Lock Nut
2	144-7717	2	Nut, Self Locking - M 10	11	144-8263	2	Rubber Ring
3	144-7947	2	Bolt M10 X 35 - ISO 4017	12	144-8264	4	Stand Leg
4	144-7956	2	Washer M16 - ISO 7089	13	144-8265	2	Lock Pin
5	144-7951	2	Nut, Self Lock M16 10.9 - ISO 10511	14	144-7711	1	Toplink Pin
6	144-7940	4	Self Lock Nut M6 - ISO 10511	15	144-7709	2	Pin, Three Point
7	144-8082	4	Bolt M6 X 50 - ISO 4014	16	144-8266	4	Lock Pin Ø12 WI-80
8	144-8162	6	R-Clip Round 3, Din 11024	17	144-7807	1	Frame Rq630
9	144-7710	3	R Clip	18	144-8267	2	Lifting Eye Bolt M20 - Din 580
				19	144-7991	2	Washer M20 - ISO 7089
				20	144-8268	2	Bolt M20 X 30 - ISO 4017

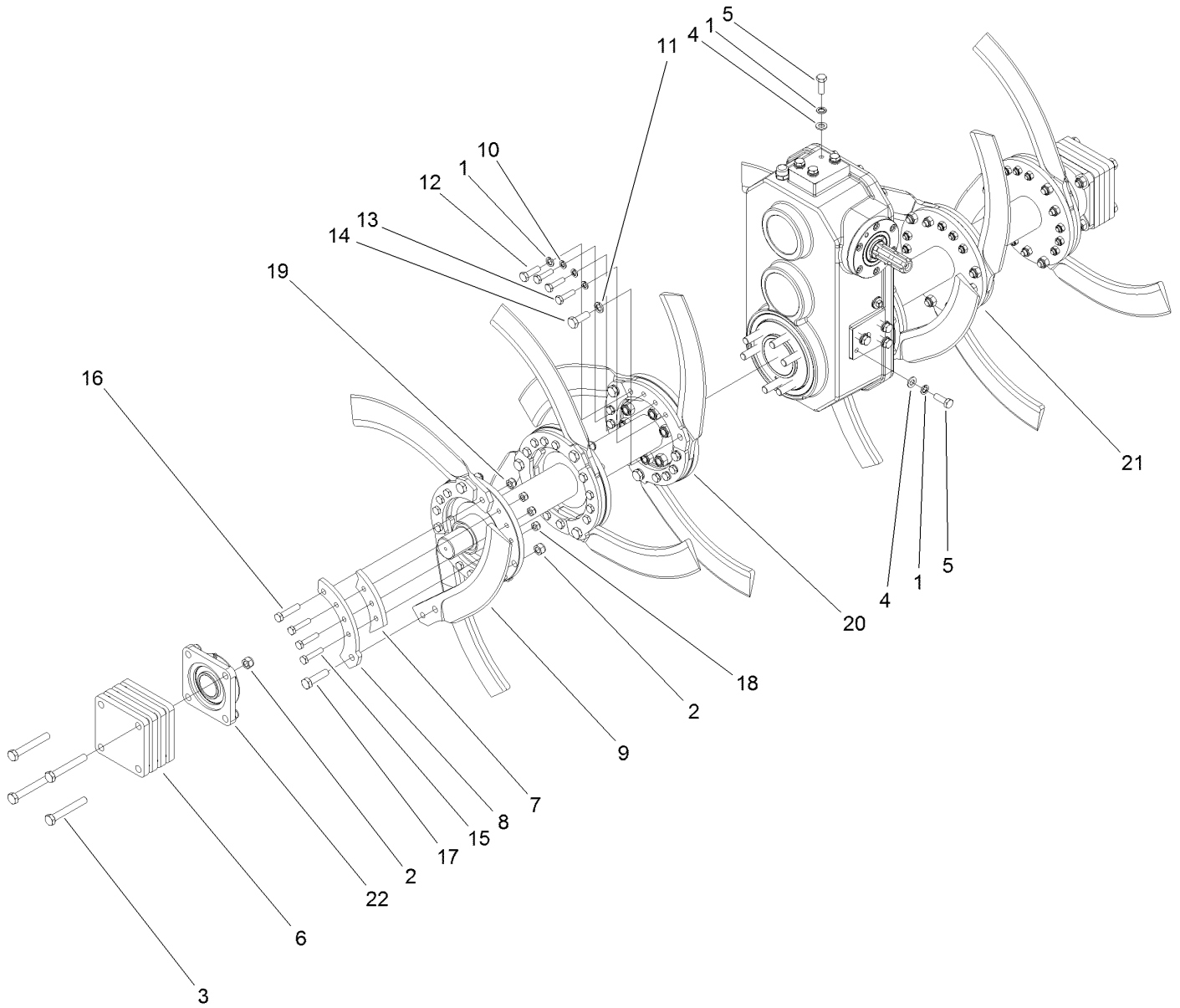
Roller and Skid Assembly



Roller and Skid Assembly (continued)

<i>Ref.</i>	<i>Part Number</i>	<i>Qty.</i>	<i>Description</i>	<i>Ref.</i>	<i>Part Number</i>	<i>Qty.</i>	<i>Description</i>
1	144-7717	8	Nut, Self Locking - M 10	19	144-8092	2	Bolt M6 X 65 - ISO 4014
2	144-7705	4	Nut, Self Locking - M 12	20	144-7940	2	Self Lock Nut M6 - ISO 10511
3	144-8269	2	Bolt M8 X 80 - ISO 4014	21	144-8192	4	Bolt M6 X 20 - ISO 4017
4	144-8270	4	Washer M14 - ISO 7089	22	144-8277	2	Lever Jack
5	144-7706	6	Nut, Self Locking - M 14	23	144-8278	4	Bolt M14 X 45 - ISO 4017
6	144-8271	2	Bolt M14 X 100 - ISO 4014	24	144-8279	2	Bolt M8 X 60 - Din 7991
7	144-7768	8	Bolt M 10 X 30	25	144-7945	2	Bolt M8 X 20 - ISO 4017
8	144-8272	4	Bolt M12 X 40 - Din 7991	26	144-7810	1	Support Plate Left
9	144-7922	4	Washer M12 - ISO 7089	27	144-7811	1	Support Plate Right
10	144-7944	4	Self Lock Nut M8 - ISO 10511	28	144-7812	1	Scraper
11	144-7929	6	Washer M8 - ISO 7089	29	144-8280	2	Distance Bushing
12	144-8273	4	Nut M8 - Din 934	30	144-7708	2	Bearing Ucfl 206
13	144-7707	2	Strut, Gas - Complete	31	144-8281	1	Rear Roller Rq630
14	144-7808	2	Weldment Jack	32	144-7961	2	Grease Nipple M6 Din 71412A
15	144-8274	2	Lock Plate	33	144-7809	1	Skid
16	144-8275	4	Distance Bushing	34	144-8282	2	Distance Bushing
17	144-8276	2	Distance Block				
18	144-7963	2	Height Indicator Strip, L= 280				

Knives Assembly

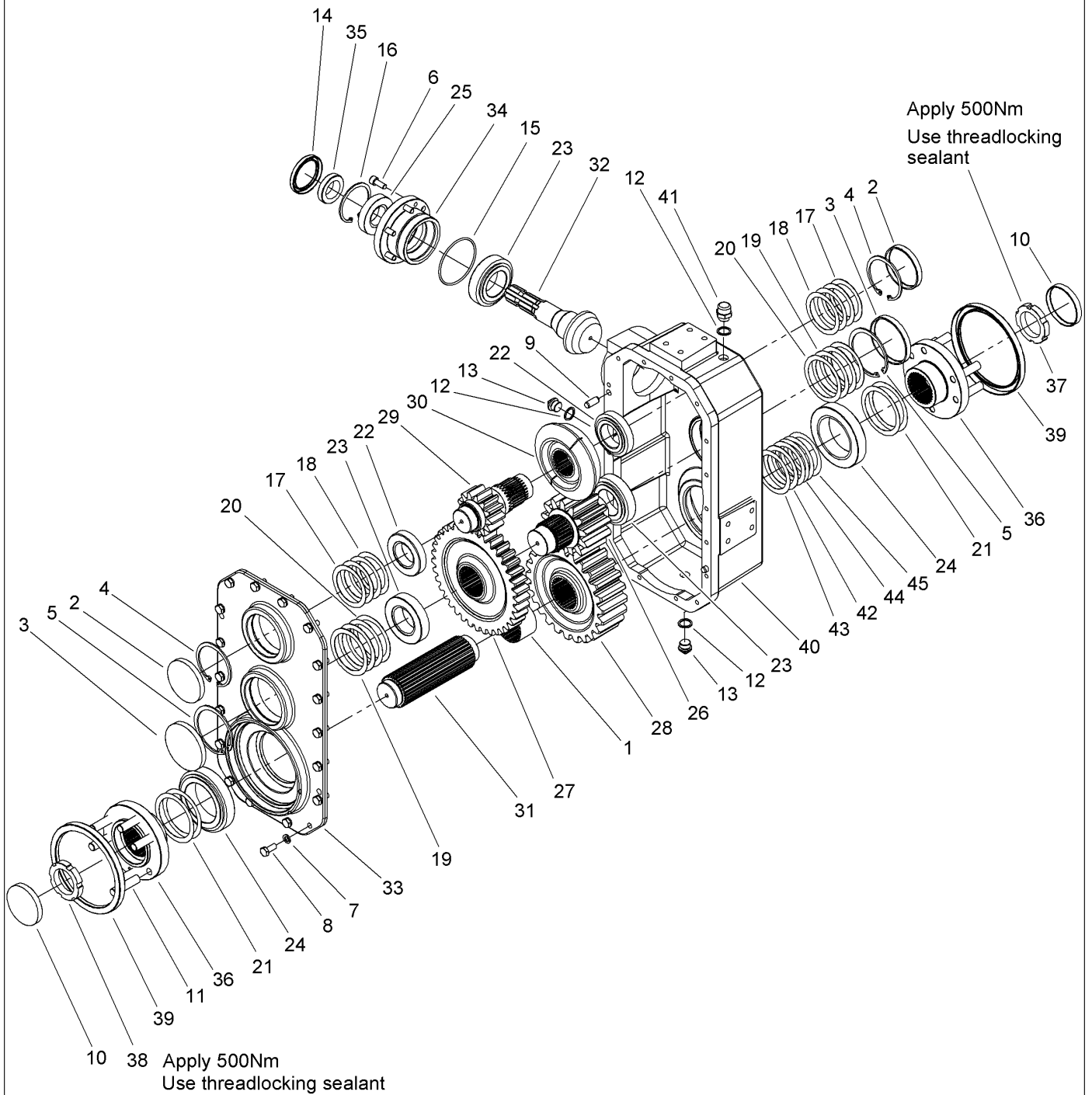


Knives Assembly (continued)

<i>Ref.</i>	<i>Part Number</i>	<i>Qty.</i>	<i>Description</i>	<i>Ref.</i>	<i>Part Number</i>	<i>Qty.</i>	<i>Description</i>
1	144-7954	14	Spring Washer M12 - Din 127	12	144-8215	6	Bolt M12 X 40 - ISO 4017
2	144-7706	20	Nut, Self Locking - M 14	13	144-8288	18	Bolt M10 X 40 - ISO 4017
3	144-8271	8	Bolt M14 X 100 - ISO 4014	14	144-8289	6	Bolt M14 X 40 - ISO 4017
4	144-7922	8	Washer M12 - ISO 7089	15	144-8110	36	Bolt M10 X 50 - ISO 4014
5	144-8283	8	Bolt M12 X 35 - ISO 4017	16	144-7703	12	Bolt M 12X55
6	144-8284	8	Distance Plate	17	144-7704	12	Bolt M 14X55
7	144-8285	18	Fill Plate	18	144-7717	36	Nut, Self Locking - M 10
8	144-8286	18	Lock Plate	19	144-7705	12	Nut, Self Locking - M 12
9	144-7700	18	Standard Blade Each, Rg 630	20	144-7813	1	Weldment Knife Section Right
10	144-7921	18	Spring Washer M10 - Din 127	21	144-7814	1	Weldment Knife Section Left
11	144-8287	6	Spring Washer M14 - Din 127	22	144-8290	2	Bearing Ucf 210

Gearbox Assembly

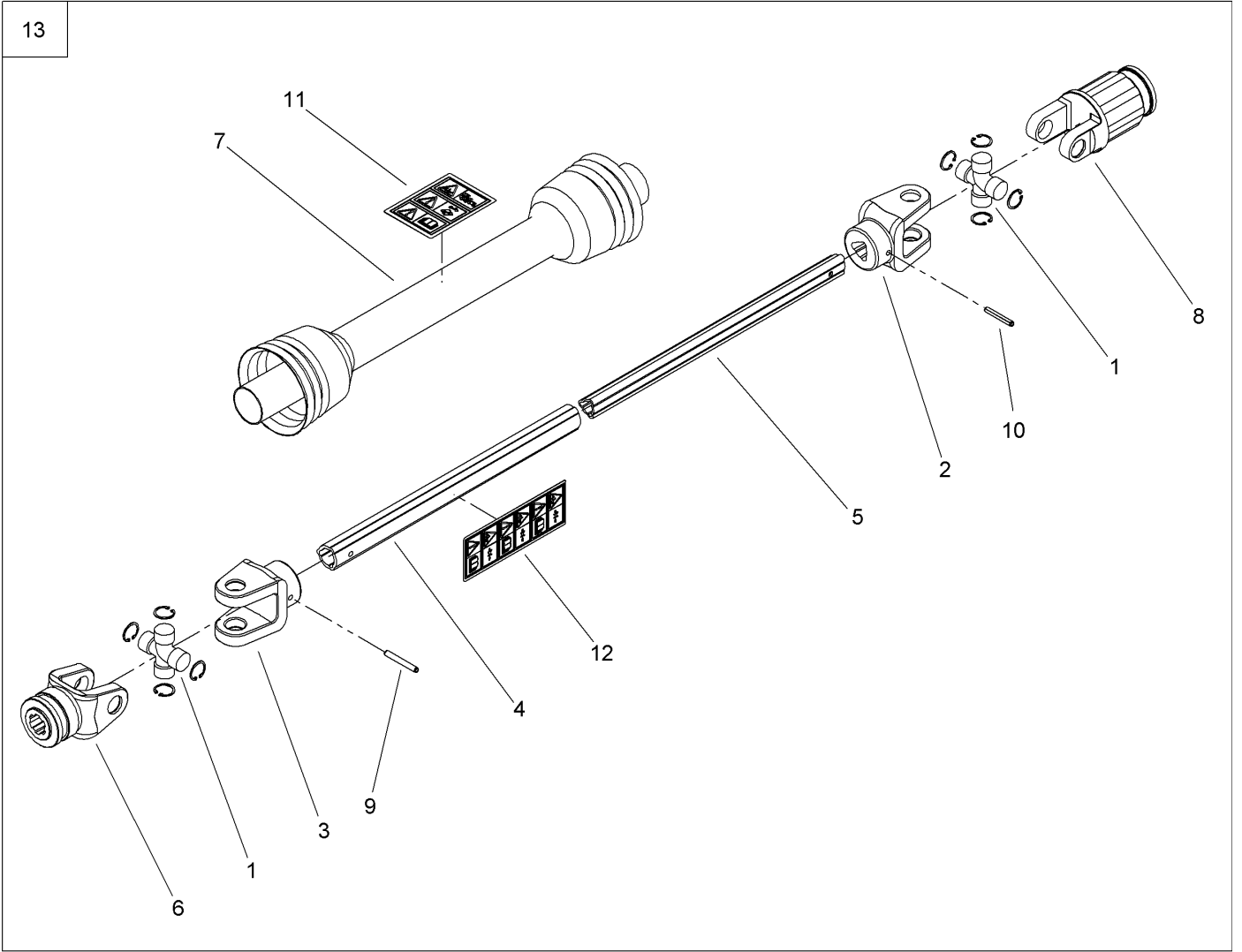
46



Gearbox Assembly (continued)

<i>Ref.</i>	<i>Part Number</i>	<i>Qty.</i>	<i>Description</i>	<i>Ref.</i>	<i>Part Number</i>	<i>Qty.</i>	<i>Description</i>
1	144-8291	1	Distance Bushing	24	144-8310	2	Bearing 32017
2	144-8292	2	End Cap 90X10	25	144-8311	1	Bearing 30208
3	144-8293	2	End Cap 100X10	26	144-8312	1	Gear Z13 - M8
4	144-8294	2	Circlip D-90 - Din 472	27	144-8313	1	Gear Z37 - M6
5	144-8295	2	Circlip D-100 - Din 472	28	144-8314	1	Gear Z24 - M88
6	144-8296	6	Bolt M10 X 25 - Din 912	29	144-8315	1	First Shaft With Gear Z13 - M6
7	144-7921	18	Spring Washer M10 - Din 127	30	144-8316	1	Conical Crown Z19 - M8.58
8	144-7920	18	Bolt M10 X 25 - ISO 4017	31	144-8317	1	Axle
9	144-8297	2	Parallel Pin ISO 8734 - 12X30	32	144-8318	1	Bevel Pinion Z9 - M8.58
10	144-8298	2	End Cap 85X10	33	144-8319	1	Cover
11	144-8299	12	Stud	34	144-8320	1	Pinion Flange
12	144-8074	3	Copper Washer 1_2	35	144-8321	1	Nut On Pinion M40X1,5
13	144-8300	2	TAP 1/2In.	36	144-8322	2	Flange For Transmission
14	144-7702	1	Seal-Oil, 60X80X10	37	144-8323	1	Nut M55X1.5-Dx
15	144-8301	1	O-Ring Ø91.97X3.53	38	144-8324	1	Nut M55X1.5 Sx
16	144-8302	1	Circlip D-80 - Din 472	39	144-7701	2	Seal-Oil, 160X190X15
17	144-8303	4	Din 988 Shim 90X70X1	40	144-8325	1	Gearbox Housing
18	144-8304	4	Din 988 Shim 90X70X0.5	41	144-8326	1	Breather 1/2In.
19	144-8305	4	Din 988 Shim 100X80X1	42	144-8303	1	Din 988 Shim 90X70X1
20	144-8306	4	Din 988 Shim 100X80X0.5	43	144-8738	1	Shim 90X70X0.3
21	144-8307	4	Din 988 Shim 105X85X0.5	44	144-8739	3	Shim 90X70X0.2
22	144-8308	2	Bearing 30210	45	144-8740	1	Shim 90X70X0.1
23	144-8309	3	Bearing 32211	46	144-8327	1	Complete Gearbox

Power Take Off Assembly



Power Take Off Assembly (continued)

<i>Ref.</i>	<i>Part Number</i>	<i>Qty.</i>	<i>Description</i>	<i>Ref.</i>	<i>Part Number</i>	<i>Qty.</i>	<i>Description</i>
1	144-8328	2	Cross And 4X Circlip Kit	7	144-8334	1	Complete Guard 40-Series
2	144-8329	1	Inner Tube Yoke Type 40	8	144-8335	1	Ratchet Clutch T40 U34
3	144-8330	1	Outer Tube Yoke Type 40	9	144-8336	1	Roll Pin 8 X 65
4	144-8331	1	T40-Series Outer Tube	10	144-8337	1	Roll Pin 8 X 55
5	144-8332	1	T40-Series Inner Tube	11	144-8338	1	Decal - PTO Outside
6	144-8333	1	Complete Collar Yoke Type 40	12	144-8339	1	Decal - PTO Inner
				13	144-7712	1	PTO Shaft

Notes:

Notes:

BULLS EYE™