



# Parts Catalog

## FieldClean 580

Model No. 46425—Serial No. 321000001 and Up



# Ordering Replacement Parts

To order replacement parts, please supply the part number, the quantity, and the description of each part desired.

## Understanding Reference Numbers

Each identified part in an illustration has a reference number. The reference number for a part also appears in the parts list, along with other information about the part.

This catalog uses two special reference number formats, one to indicate parts in a service assembly and another to indicate the quantity of a given part in an illustration.

## Service Assembly Reference Numbers

Parts in service assemblies have reference numbers in the form a:b. The a represents the reference number of the entire service assembly and the b represents a sequential number unique to each part within the service assembly.

For example, a wheel assembly might be identified by reference number 6, the tire by 6:1, the valve by 6:2, and the wheel by 6:3. When you order the assembly identified by reference number 6, you receive all parts identified by reference numbers 6:1, 6:2, and 6:3. However, you may also order any part individually. Reference numbers of this type appear in illustration and in parts lists.

## Reference Numbers Indicating Quantity

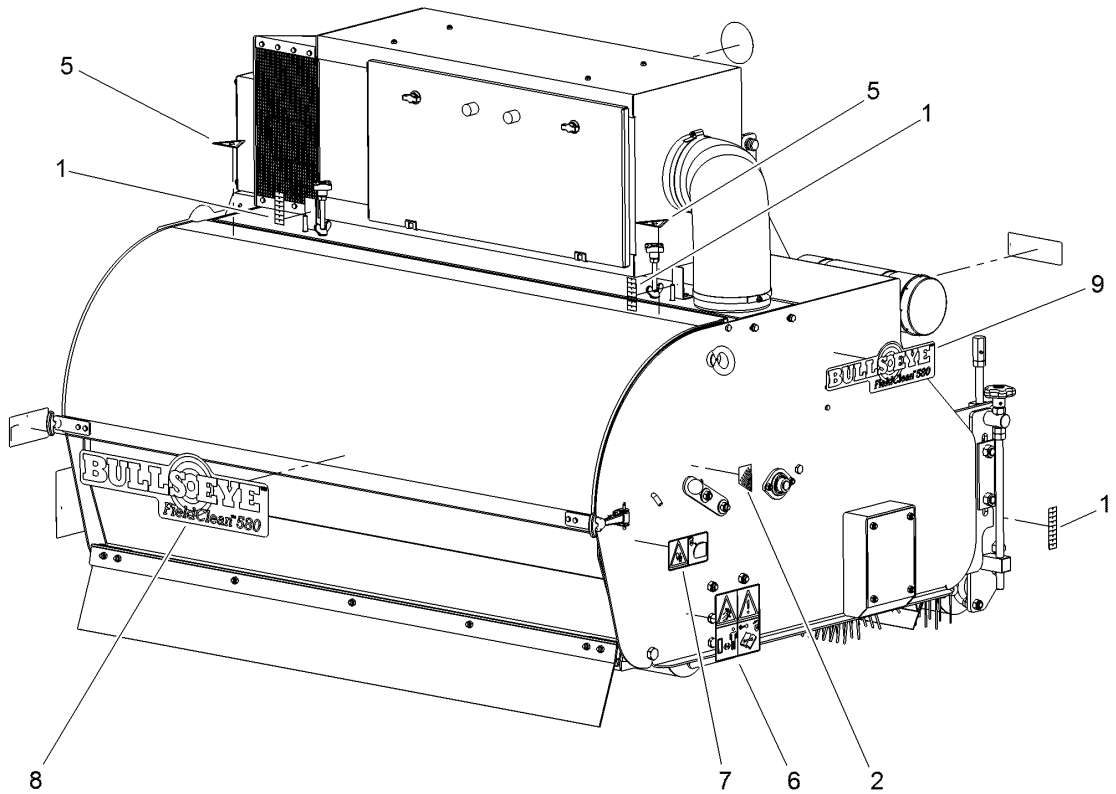
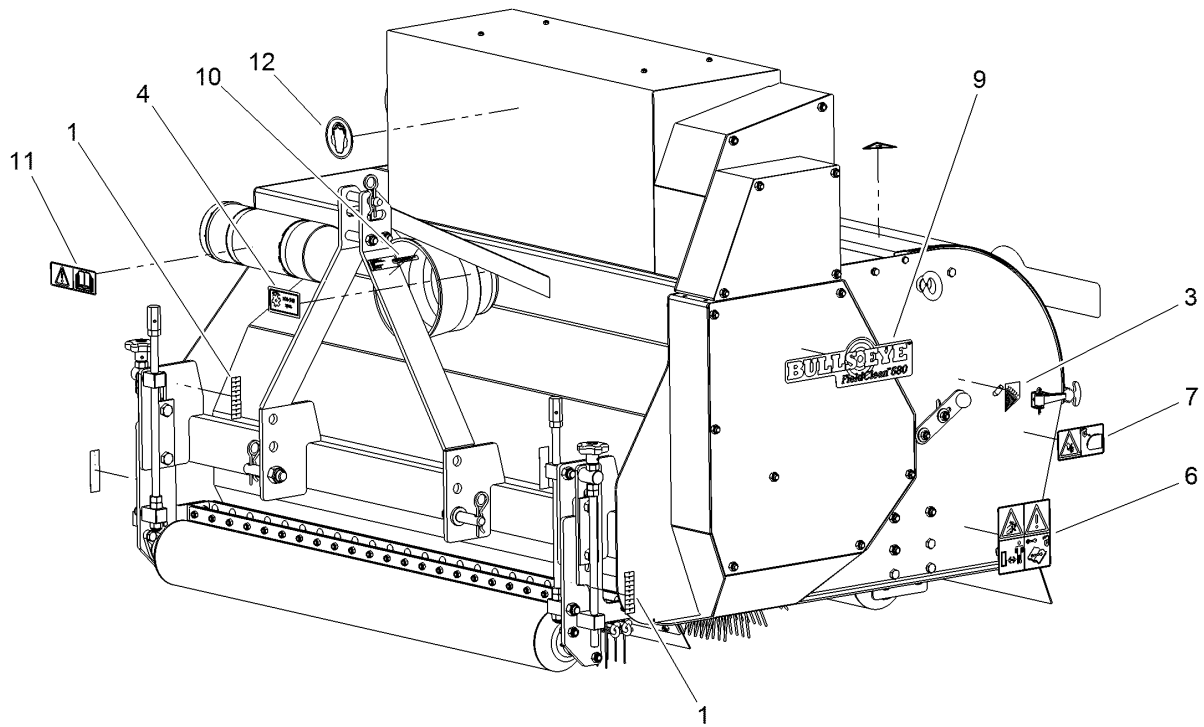
In an illustration, if a reference number indicates more than one part, the reference number has the form nX y. The n represents the quantity of the part, the X is the multiplication symbol, and the y represents the reference number.

For example, in an illustration, the reference number 2X 37 means that two of the parts identified by reference number 37 are indicated.

# Contents

Decal Assembly .....	4
Covers Assembly .....	6
Rollers and Rakes Assembly .....	8
Rollers Assembly .....	10
Hopper and Brush Assembly .....	12
Driveline Assembly .....	14
Gearbox and Brush Assembly .....	16
Sieve Assembly .....	18
Frame Assembly .....	20
Vacuum Assembly .....	22
Vacuum Head Assembly .....	24
PTO Assembly .....	26

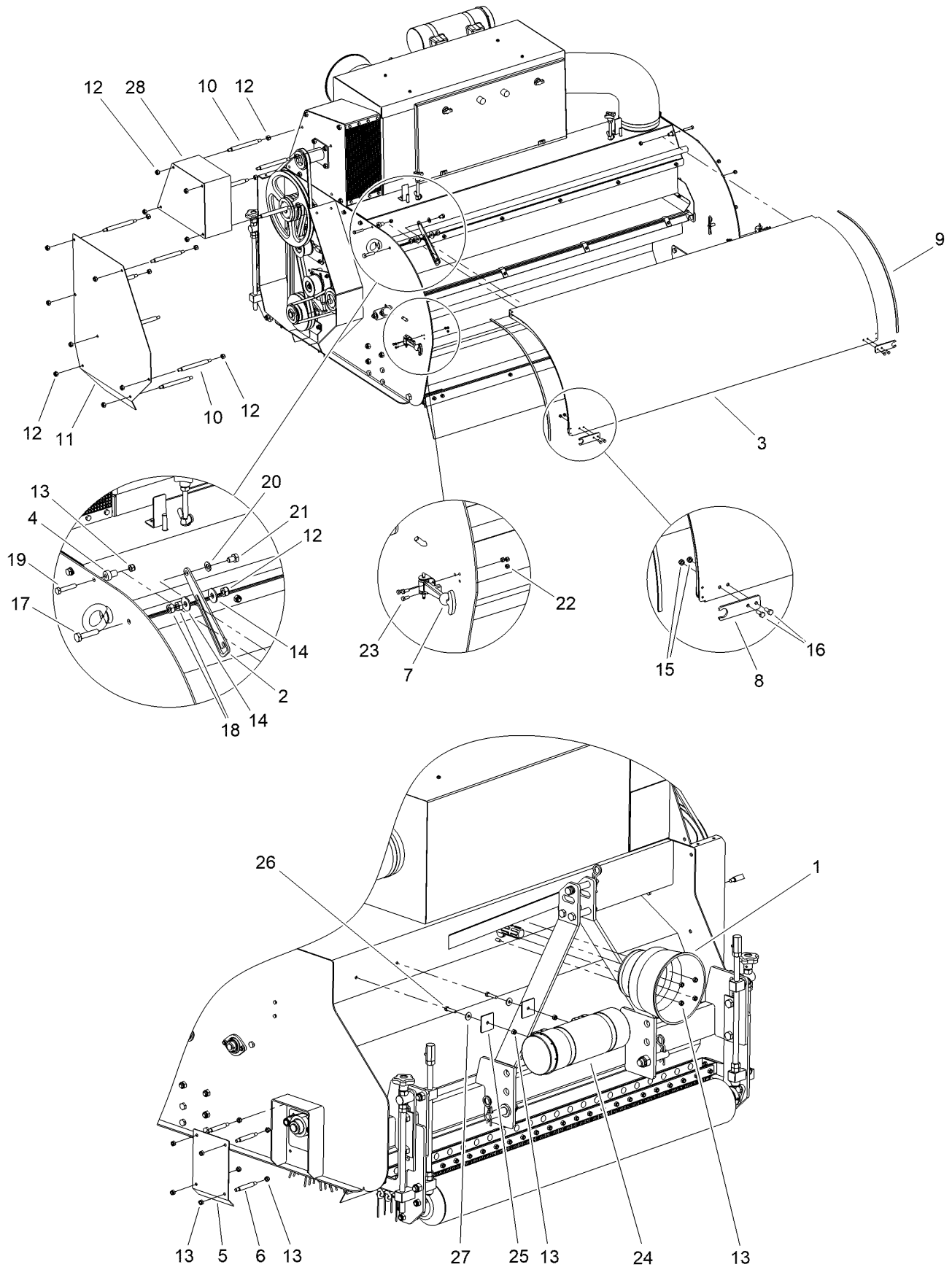
# Decal Assembly



## Decal Assembly (continued)

<i>Ref.</i>	<i>Part Number</i>	<i>Qty.</i>	<i>Description</i>	<i>Ref.</i>	<i>Part Number</i>	<i>Qty.</i>	<i>Description</i>
1	144-8258	6	Decal-Ruler	7	144-7911	2	Decal-Close Cover
2	144-8367	1	Decal-Angle Ind. Right	8	136-3668	1	Decal-Fieldclean 580
3	144-8368	1	Decal-Angle Ind. Left	9	136-3667	2	Decal-Fieldclean 580
4	144-8256	1	Decal PTO 350 540	10	133-8061	1	Decal-Warning
5	144-7906	2	Decal-Cut Off Fingers	11	105-0698	1	Decal-Caution
6	144-7905	2	Decal-Safety	12	144-8369	1	Decal-Safety Noise

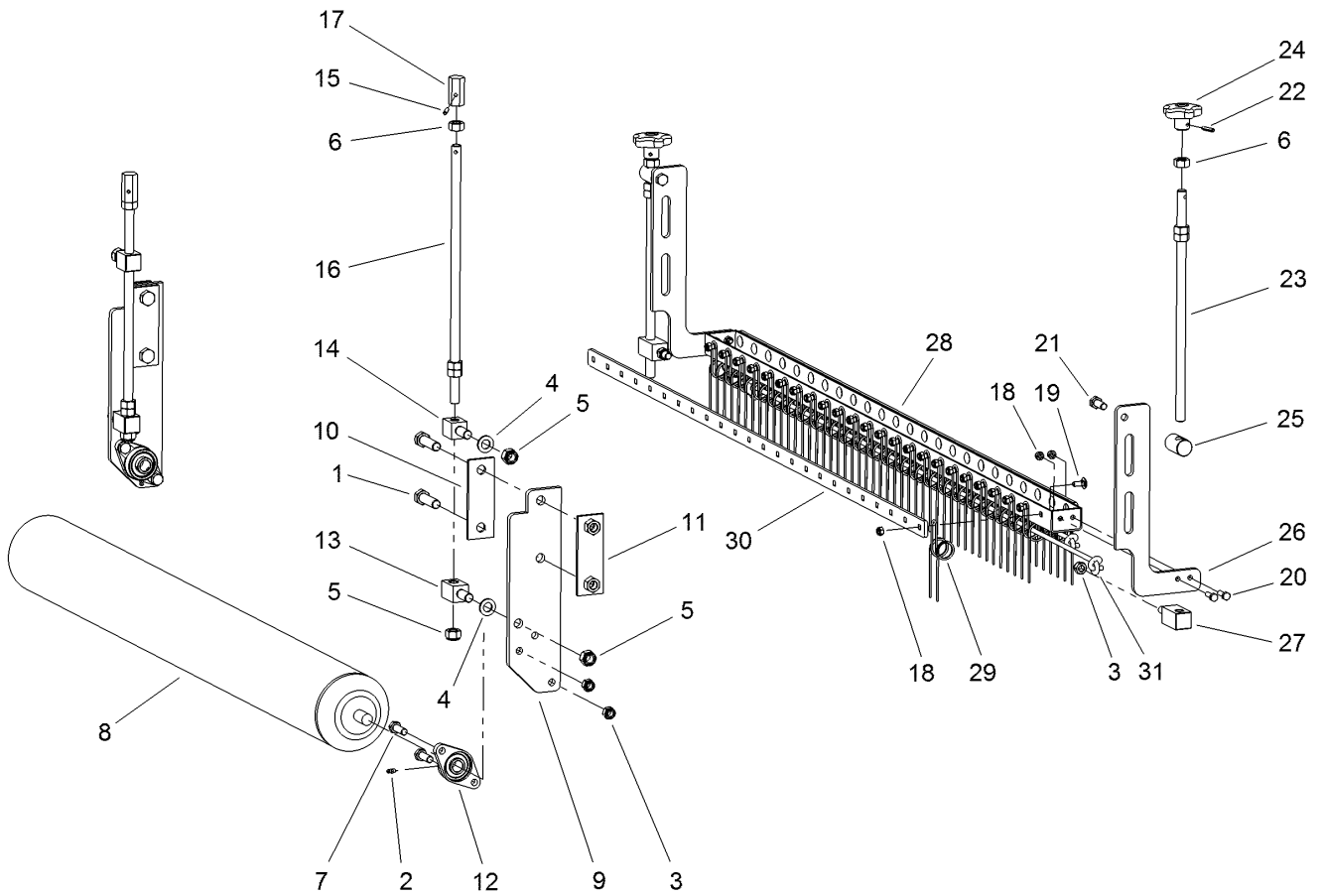
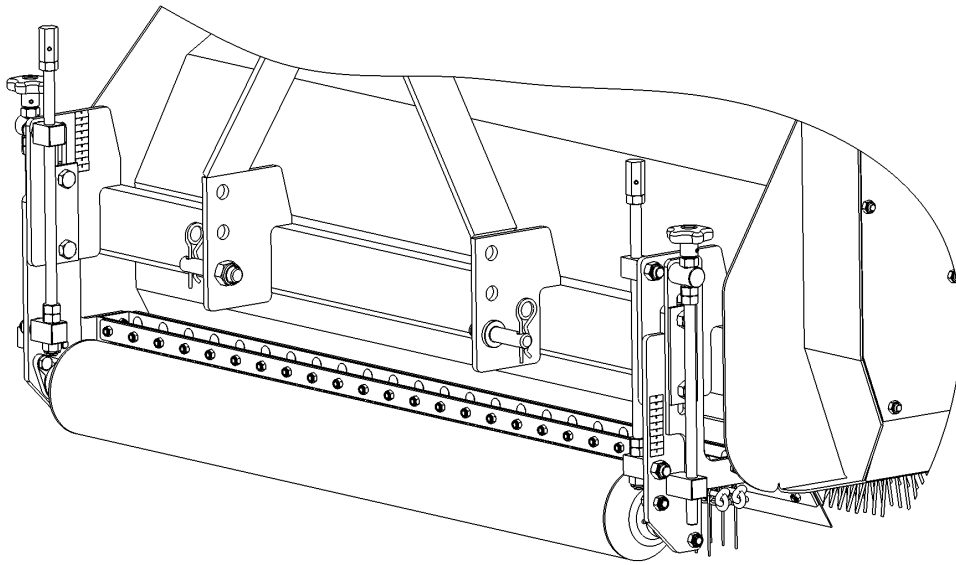
# Covers Assembly



## Covers Assembly (continued)

<i>Ref.</i>	<i>Part Number</i>	<i>Qty.</i>	<i>Description</i>	<i>Ref.</i>	<i>Part Number</i>	<i>Qty.</i>	<i>Description</i>
1	144-7932	1	PTO Cover	16	144-8159	4	Bolt M6 X 16 - ISO 4017
2	144-8370	1	Lock Strip Cover Fc580	17	144-8025	1	Bolt M10 X 45 - ISO 4017
3	144-7817	1	Cover	18	144-8139	2	Nut M10 - Din 934
4	144-8371	2	Bushing Ø8/Ø12/Ø20 L-25	19	144-7943	2	Bolt M8 X 40 - ISO 4017
5	144-7818	1	Small Cover	20	144-7939	1	Washer M10 - ISO 7089
6	144-8372	4	Stud	21	144-8377	1	Bolt M10 X 14 - ISO 4017
7	144-8373	2	Rubber Lock ASM	22	144-8378	6	Self Lock Nut M5 - ISO 10511
8	144-8374	2	Latch For Rubber Lock	23	144-8379	6	Bolt M5 X 12 - ISO 4017
9	144-8375	2	Rubber U-Seal	24	144-8128	1	Toolbox Complete
10	144-8376	11	Stud L-160	25	144-8129	2	Toolbox Contraplate
11	144-7819	1	Cover Plate Pulley	26	144-8130	2	Bolt M8 X 35 - ISO 4017
12	144-7717	20	Nut, Self Locking - M 10	27	144-8013	2	Washer-Large M8 - Din 9021
13	144-7944	16	Self Lock Nut M8 - ISO 10511	28	144-7826	1	Pulley Cover
14	144-7946	2	Large Washer M10 - Din 9021				
15	144-7940	4	Self Lock Nut M6 - ISO 10511				

# Rollers and Rakes Assembly

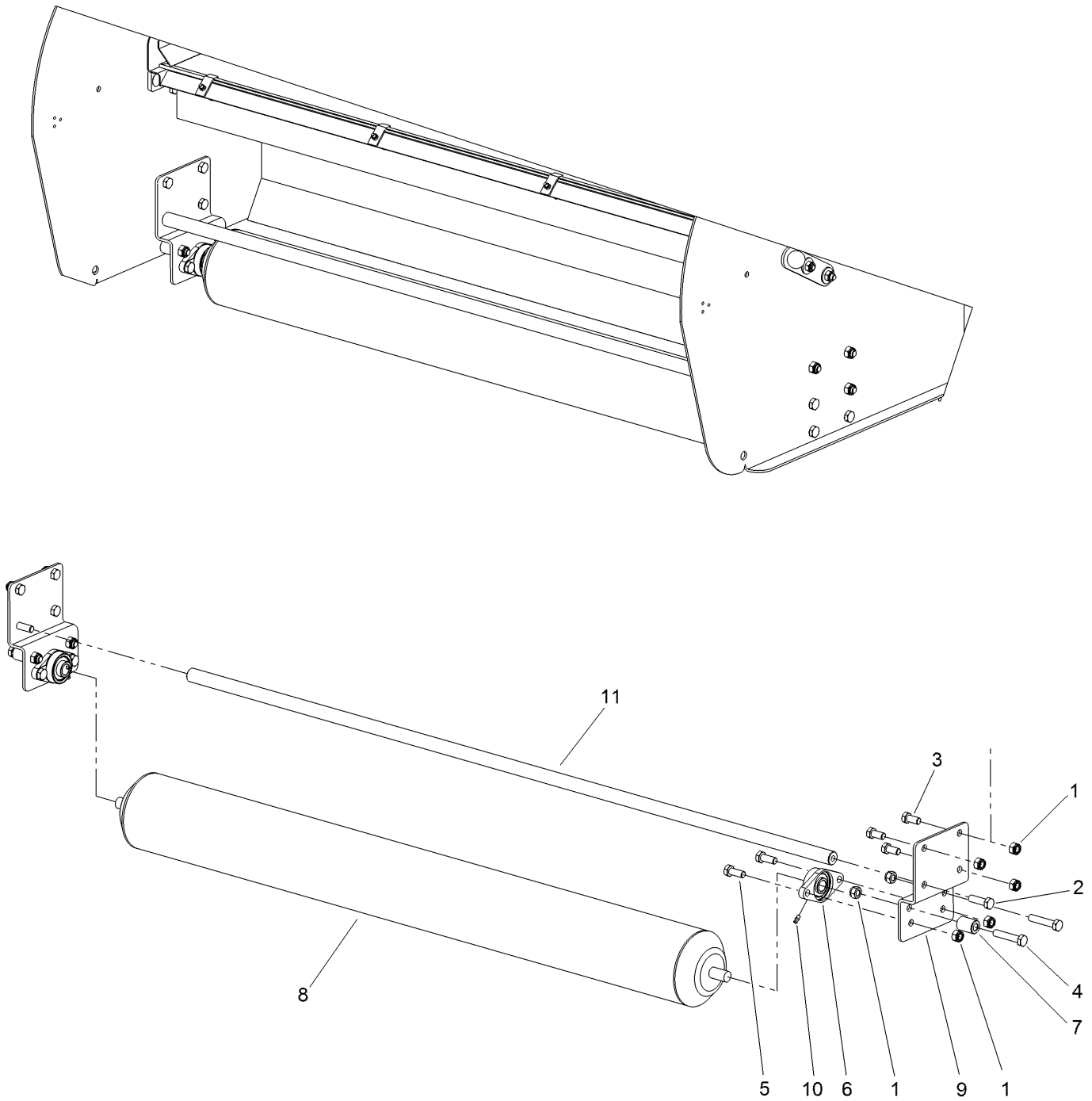




## Rollers and Rakes Assembly (continued)

<i>Ref.</i>	<i>Part Number</i>	<i>Qty.</i>	<i>Description</i>	<i>Ref.</i>	<i>Part Number</i>	<i>Qty.</i>	<i>Description</i>
1	144-7972	4	Bolt M16 X 55 - ISO 4017	15	144-8387	2	Roll Pin 6 X 30 - ISO 8752
2	144-8283	4	Bolt M12 X 35 - ISO 4017	16	144-8388	2	Spindle
3	144-7705	6	Nut, Self Locking - M 12	17	144-8389	2	Spindle Nut
4	144-7956	2	Washer M16 - ISO 7089	18	144-7944	48	Self Lock Nut M8 - ISO 10511
5	144-7951	6	Nut, Self Lock M16 10.9 - ISO 10511	19	144-8390	48	Mh Bolt M8 X 20 ISO 8677
6	144-8012	2	Nut M16 - Din 934	20	144-8014	4	Bolt M8 X 25 - ISO 4017
7	144-7961	2	Grease Nipple M6 Din 71412A	21	144-7950	2	Bolt M12 X 30 - ISO 4017
8	144-8381	1	Roller	22	144-8391	2	Roll Pin 6 X 26 - ISO 8752
9	144-8382	2	Front Roller Guide	23	144-8392	2	Spindle
10	144-8383	2	Strip	24	144-8393	2	Knurled Knob Din 6336 M16
11	144-8384	2	Lock Plate Height Adjustment	25	144-8394	2	Rake Adjustment Bushing
12	144-7745	2	Bearing Ucfl 204	26	144-8395	2	Side Support
13	144-8385	2	Front Roller Adjustment Bushing	27	144-8396	2	Adjustment Bushing With Thread
14	144-8386	2	Adjustment Bushing With Thread	28	144-7816	1	Rake Tine Beam
				29	144-7742	48	Rake Tine
				30	144-8397	2	Lock Strip
				31	144-8398	2	Rope

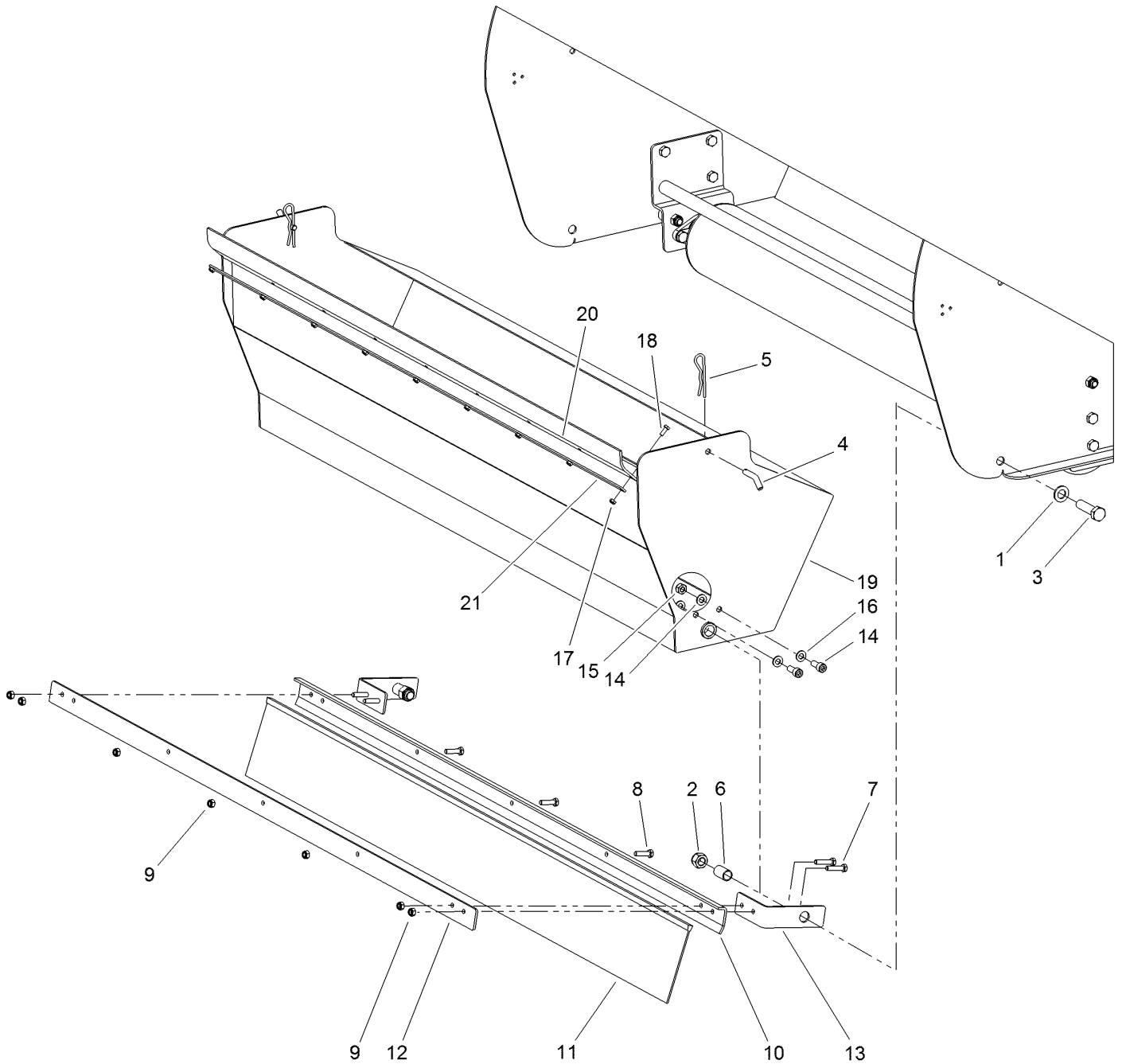
# Rollers Assembly



## Rollers Assembly (continued)

<i>Ref.</i>	<i>Part Number</i>	<i>Qty.</i>	<i>Description</i>	<i>Ref.</i>	<i>Part Number</i>	<i>Qty.</i>	<i>Description</i>
1	144-7705	14	Nut, Self Locking - M 12	8	144-8381	1	Roller
2	144-8215	2	Bolt M12 X 40 - ISO 4017	9	144-8400	2	Bearing Plate Back Roller
3	144-7955	6	Bolt M12 X 25 - ISO 4017	10	144-7961	2	Grease Nipple M6 Din 71412A
4	144-8031	4	Bolt M12 X 60 - ISO 4014	11	144-8401	1	Reinforcement Bar
5	144-7950	4	Bolt M12 X 30 - ISO 4017				
6	144-7745	2	Bearing Ucf1 204				
7	144-8399	4	Bushing Bearing Plate Backroller				

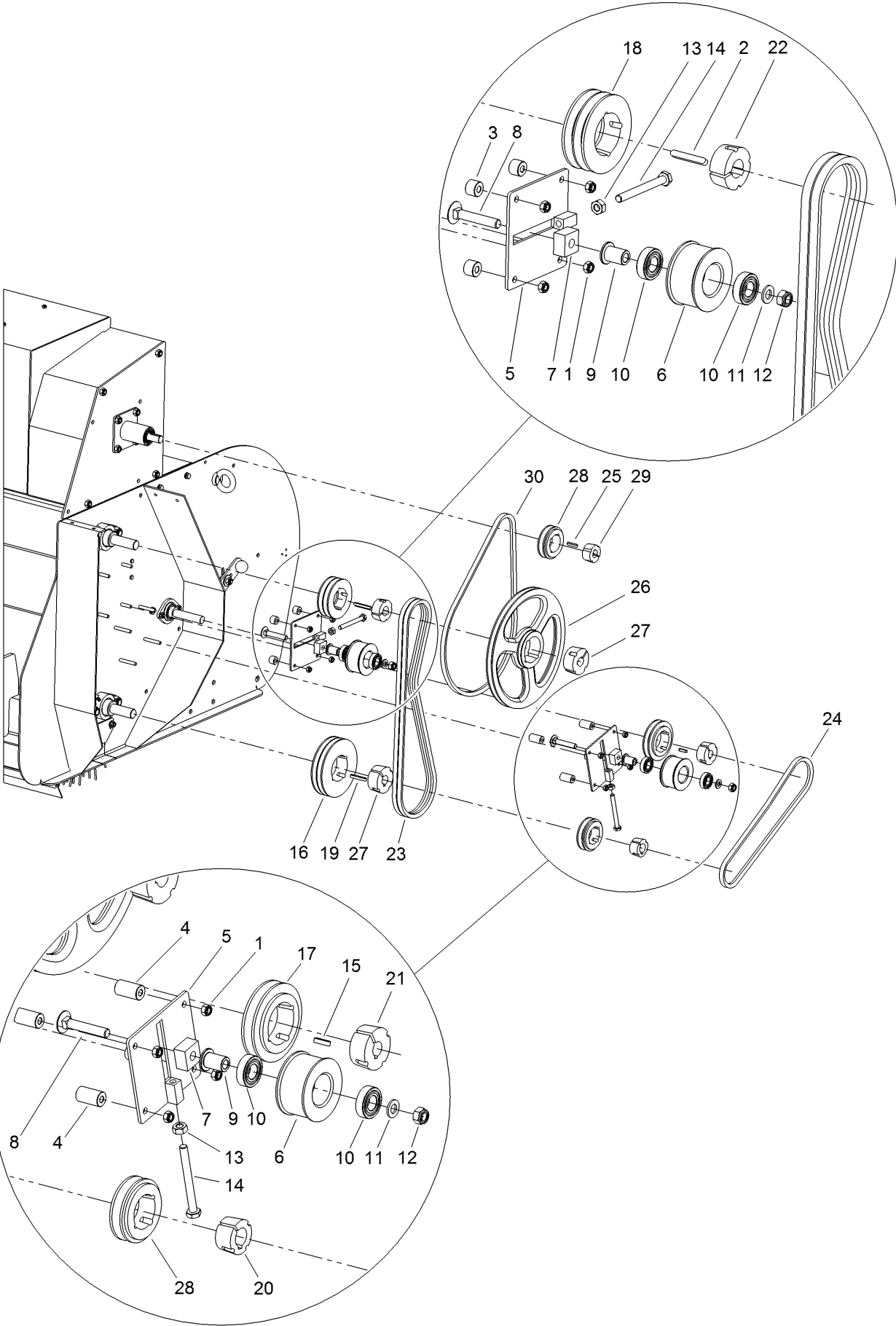
# Hopper and Brush Assembly



## Hopper and Brush Assembly (continued)

<i>Ref.</i>	<i>Part Number</i>	<i>Qty.</i>	<i>Description</i>	<i>Ref.</i>	<i>Part Number</i>	<i>Qty.</i>	<i>Description</i>
1	144-7956	2	Washer M16 - ISO 7089	11	144-7744	1	Rear Brush
2	144-7951	2	Nut, Self Lock M16 10.9 - ISO 10511	12	144-8406	1	Clamp Strip Back Brush
3	144-7980	2	Bolt M16 X 60 - ISO 4017	13	144-8407	2	Hinge For Back Brush
4	144-8402	2	Lock Pin	14	144-7939	8	Washer M10 - ISO 7089
5	144-8403	2	R-Clip D-4	15	144-7717	4	Nut, Self Locking - M 10
6	144-8404	2	Distance Bushing	16	144-8296	4	Bolt M10 X 25 - Din 912
7	144-8130	4	Bolt M8 X 35 - ISO 4017	17	144-7940	9	Self Lock Nut M6 - ISO 10511
8	144-7949	3	Bolt M8 X 30 - ISO 4017	18	144-8159	9	Bolt M6 X 16 - ISO 4017
9	144-7944	7	Self Lock Nut M8 - ISO 10511	19	144-7820	1	Debris Hopper
10	144-8405	1	Main Strip Back Brush	20	144-8408	1	Closing Rubber Cover
				21	144-8409	1	Clamp Strip

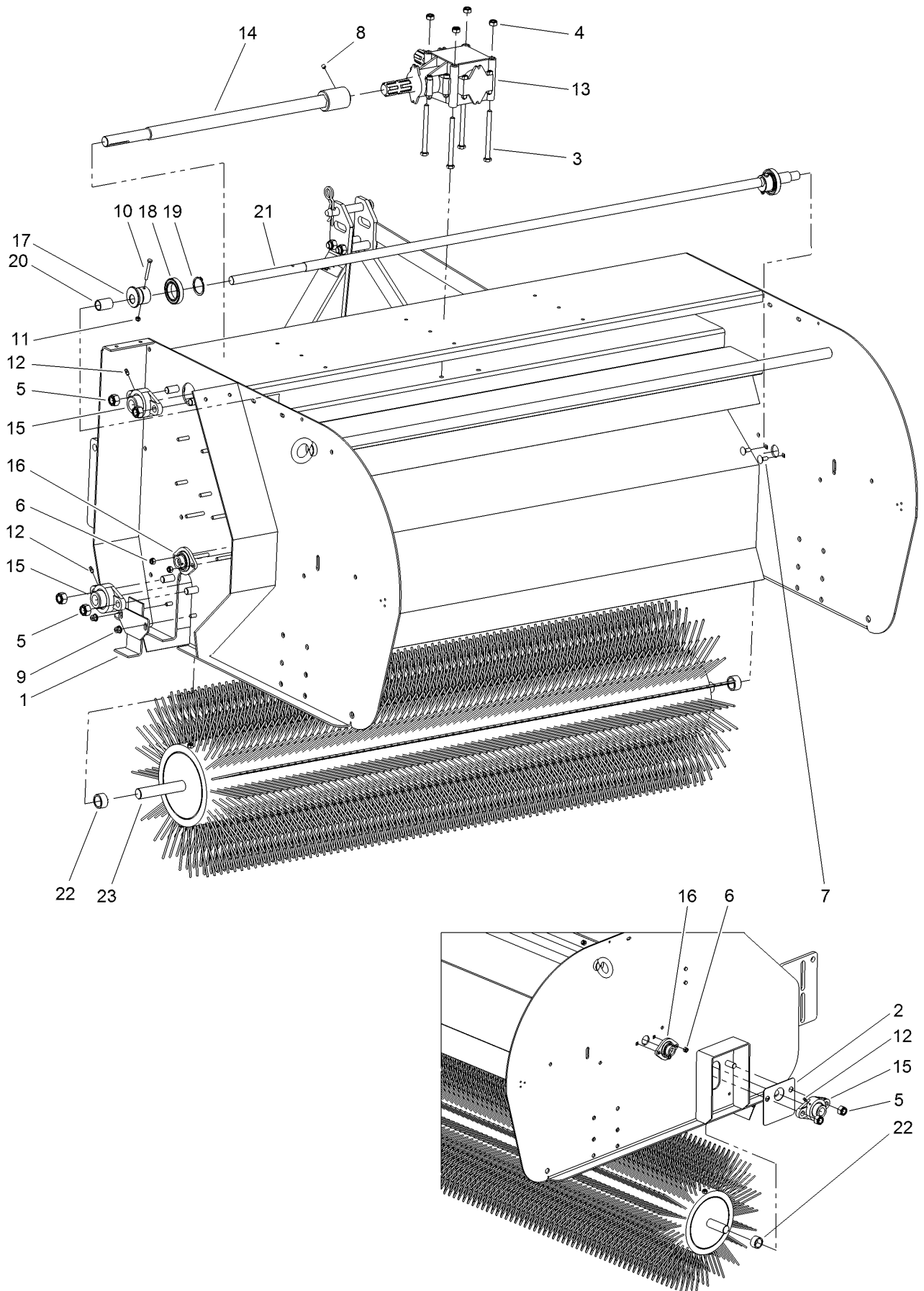
# Driveline Assembly



## Driveline Assembly (continued)

<i>Ref.</i>	<i>Part Number</i>	<i>Qty.</i>	<i>Description</i>	<i>Ref.</i>	<i>Part Number</i>	<i>Qty.</i>	<i>Description</i>
1	144-7944	8	Self Lock Nut M8 - ISO 10511	15	144-8213	1	Key 6X6X25 - Din 6885
2	144-8410	1	Key 8X7X56 - Din 6885	16	144-8419	1	Pulley Spa 150-1 T2012
3	144-8411	4	Distance Bushing	17	144-8420	1	Pulley Spa 100-1 T1610
4	144-8412	4	Distance Bushing Ø8/Ø20 L-35	18	144-8421	1	Pulley Spa 100-2 T1610
5	144-8413	2	Spanner Plate	19	144-8422	1	Key 8X7X50 - Din 6885
6	144-8414	2	Idler Pulley	20	144-8423	1	Taperlock 1210 - 25Mm
7	144-8415	2	Spanner Block Pulley	21	144-8424	1	Taperlock 1640 Ø20
8	144-8416	2	Mh Bolt M12 X 70 ISO 8677	22	144-8425	1	Taperlock 1610 - 25 Mm
9	144-8417	2	Idler Distance Shaft	23	144-7746	2	V Belt Xpa 1357
10	144-8218	4	Bearing 6004 2Hrs	24	144-7747	1	V Belt Xpa 982
11	144-7922	2	Washer M12 - ISO 7089	25	144-8426	2	Key 6X6X32 - Din 6885
12	144-7705	2	Nut, Self Locking - M 12	26	144-8427	1	Spa 315-1 T2012
13	144-8139	2	Nut M10 - Din 934	27	144-8428	2	Taperlock 2012 - 25Mm
14	144-8418	2	Bolt M10 X 100 - ISO 4017	28	144-8429	2	Pulley Spa 80-1 T1210
				29	144-8430	1	Taperlock 1210 - 20Mm
				30	144-7754	1	V Belt Xpa 1232

# Gearbox and Brush Assembly

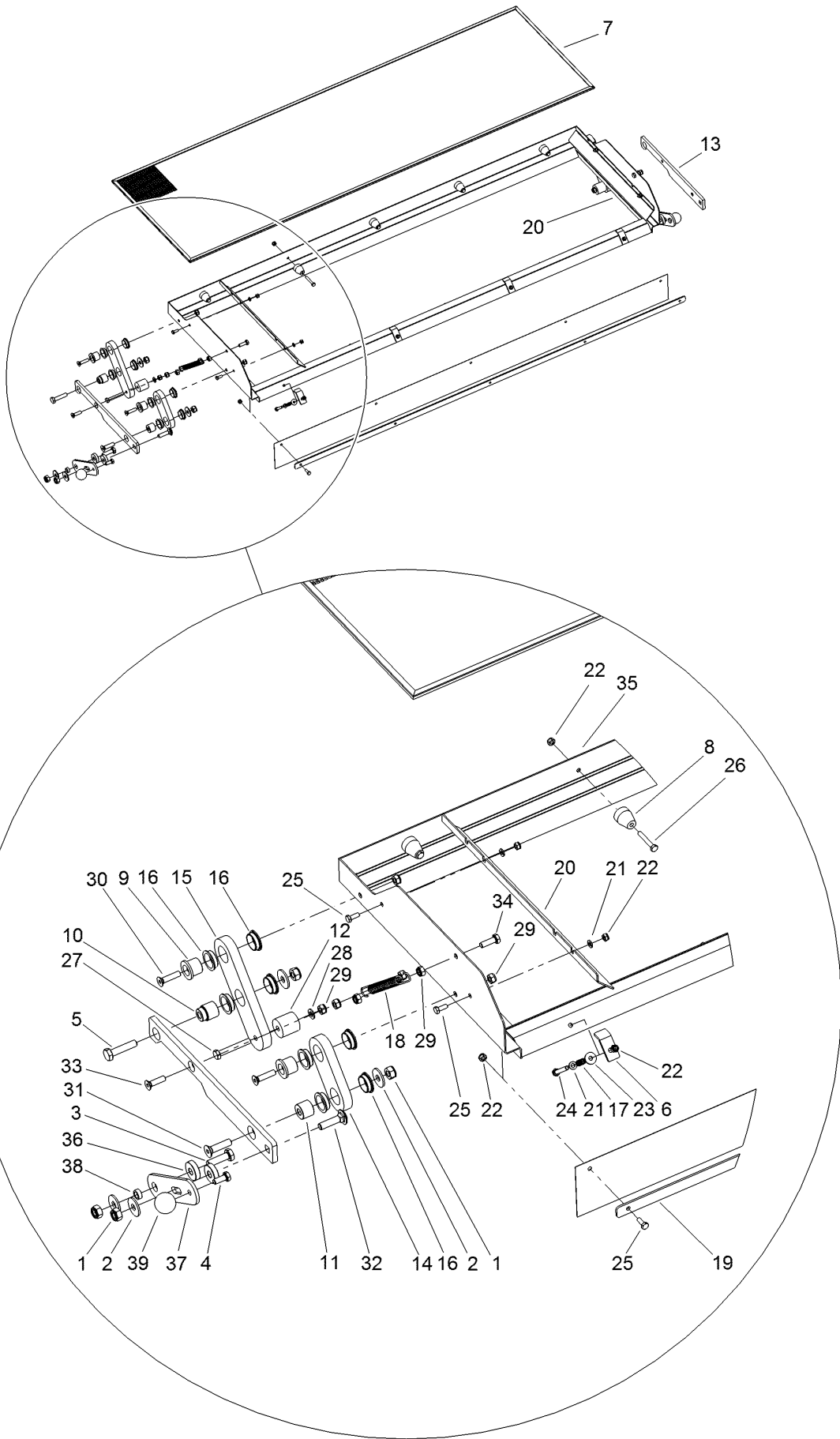




## Gearbox and Brush Assembly (continued)

<i>Ref.</i>	<i>Part Number</i>	<i>Qty.</i>	<i>Description</i>	<i>Ref.</i>	<i>Part Number</i>	<i>Qty.</i>	<i>Description</i>
1	144-8431	1	Cover Plate Brush	12	144-7961	3	Grease Nipple M6 Din 71412A
2	144-8432	1	Cover Plate	13	144-8435	1	Gearbox Cover T-281A 1:1.46
3	144-8136	4	Bolt M10 X 120 - ISO 4014	14	144-8436	1	Drive Shaft
4	144-7717	4	Nut, Self Locking - M 10	15	144-8437	3	Bearing Uelfl205
5	144-7951	6	Nut, Self Lock M16 10.9 - ISO 10511	16	144-8438	2	Bearing Pcslt20
6	144-7944	4	Self Lock Nut M8 - ISO 10511	17	144-8439	2	Eccentric
7	144-8390	4	Mh Bolt M8 X 20 ISO 8677	18	144-8440	2	Bearing 61908-2Rs
8	144-8433	1	Set Screw M8 X 8 - Din 913	19	144-8441	2	Circlip D-40 - Din 471
9	144-8434	2	Self Lock Nut Flanged M8 - Din 6926	20	144-8442	2	Distance Bushing
10	144-8082	2	Bolt M6 X 50 - ISO 4014	21	144-8443	1	Eccentric Shaft
11	144-7940	2	Self Lock Nut M6 - ISO 10511	22	144-8444	2	Distance Bushing Brush
				23	144-7752	1	Brush

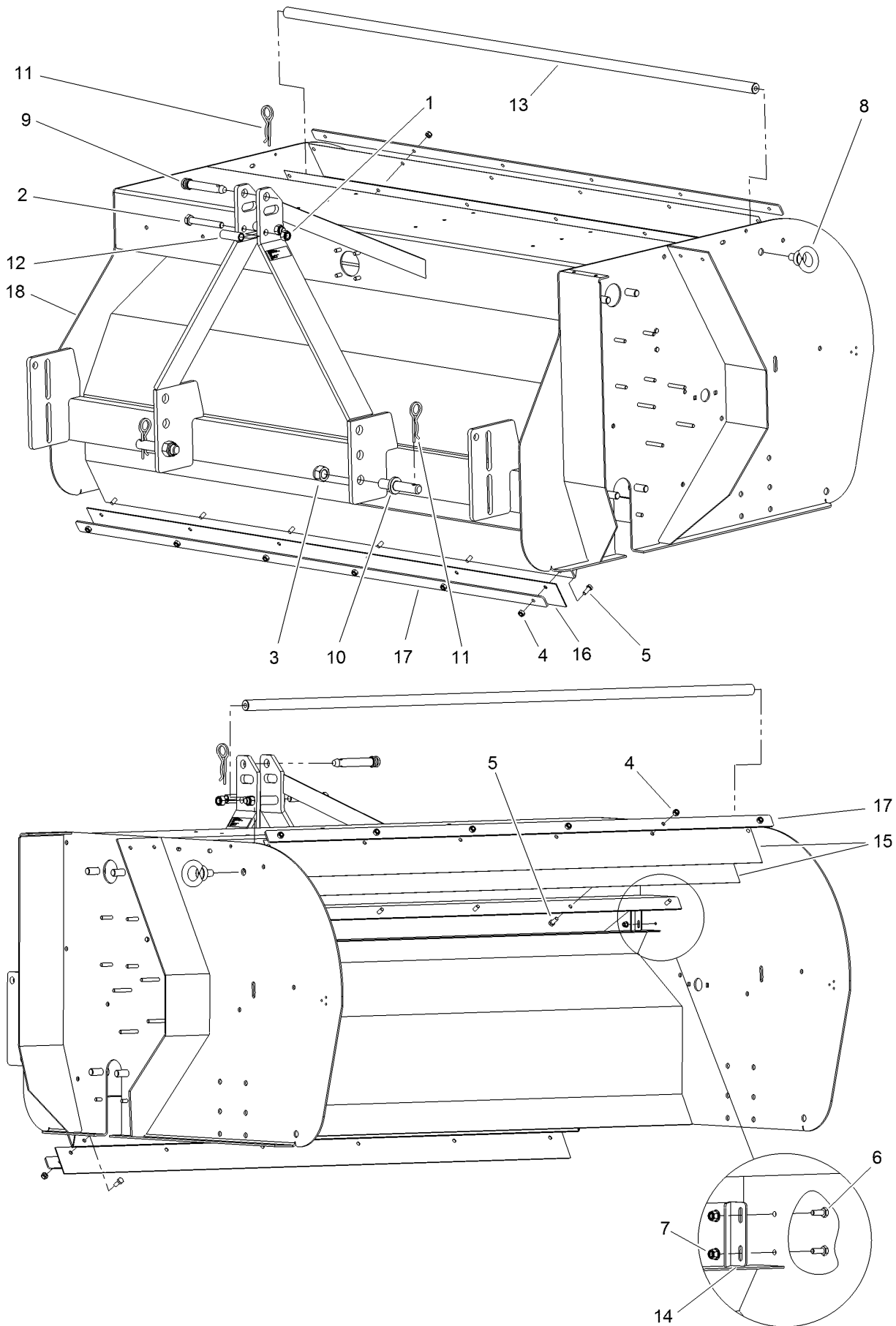
# Sieve Assembly



## Sieve Assembly (continued)

<i>Ref.</i>	<i>Part Number</i>	<i>Qty.</i>	<i>Description</i>	<i>Ref.</i>	<i>Part Number</i>	<i>Qty.</i>	<i>Description</i>
1	144-7717	8	Nut, Self Locking - M 10	16	144-8458	16	Bearing Bushing Ø27/Ø24 L-7
2	144-7946	8	Large Washer M10 - Din 9021	17	144-8459	4	Compression Spring
3	144-7947	2	Bolt M10 X 35 - ISO 4017	18	144-8460	2	Tension Spring
4	144-7945	2	Bolt M8 X 20 - ISO 4017	19	144-8461	1	Clamp Strip
5	144-8445	2	Bolt M10 X 45 - ISO 4014 - 10.9	20	144-8462	2	Rubber Deflector
6	144-8446	4	Lock Strip	21	144-8251	4	Washer M6 - ISO 7089
7	144-7748	1	Sieve, 3.2 Mm - Fc580 (Optional)	22	144-7940	18	Self Lock Nut M6 - ISO 10511
7	144-7749	1	Sieve, 4.0 Mm - Fc580 (Optional)	23	144-8463	4	Large Washer M6 - Din 9021
7	144-7750	1	Sieve 5.5Mm - Fc580 (Optional)	24	144-8464	4	Bolt M6 X 45 - ISO 4017
7	144-7751	1	Sieve, 6.0 Mm - Fc580 (Optional)	25	144-8159	9	Bolt M6 X 16 - ISO 4017
7	144-8447	1	Sieve Mesh 5X5 (Standard)	26	144-8465	5	Bolt M6 X 40 - ISO 4017
7	144-8448	1	Sieve Mesh 8X8 (Optional)	27	144-8466	2	Bolt M8 X 55 - ISO 4014
7	144-8449	1	Sieve Mesh 10X10 (Optional)	28	144-7929	2	Washer M8 - ISO 7089
8	144-8450	5	Lock Plug	29	144-7944	12	Self Lock Nut M8 - ISO 10511
9	144-8451	4	Bushing	30	144-8467	4	Din 7991 - M8 X 35 - 35C
10	144-8452	2	Distance Bushing	31	144-8191	2	Bolt M10 X 40 - Din 7991
11	144-8453	2	Distance Bushing Ø24/Ø10 L-19.2	32	144-8468	2	Mh Bolt M10 X 40 ISO 8677
12	144-8454	2	Bushing	33	144-8469	2	Bolt M8 X 30 - Din 7991
13	144-8455	1	Connecting Strip	34	144-8014	2	Bolt M8 X 25 - ISO 4017
14	144-8456	2	Strip Short	35	144-8470	1	Frame Sieve
15	144-8457	2	Strip Long	36	144-8471	4	Spacer Ring
				37	144-8472	2	Strip
				38	144-8473	2	Pivot Bushing
				39	144-8474	2	Plastic Ball Knob Din 319 M8

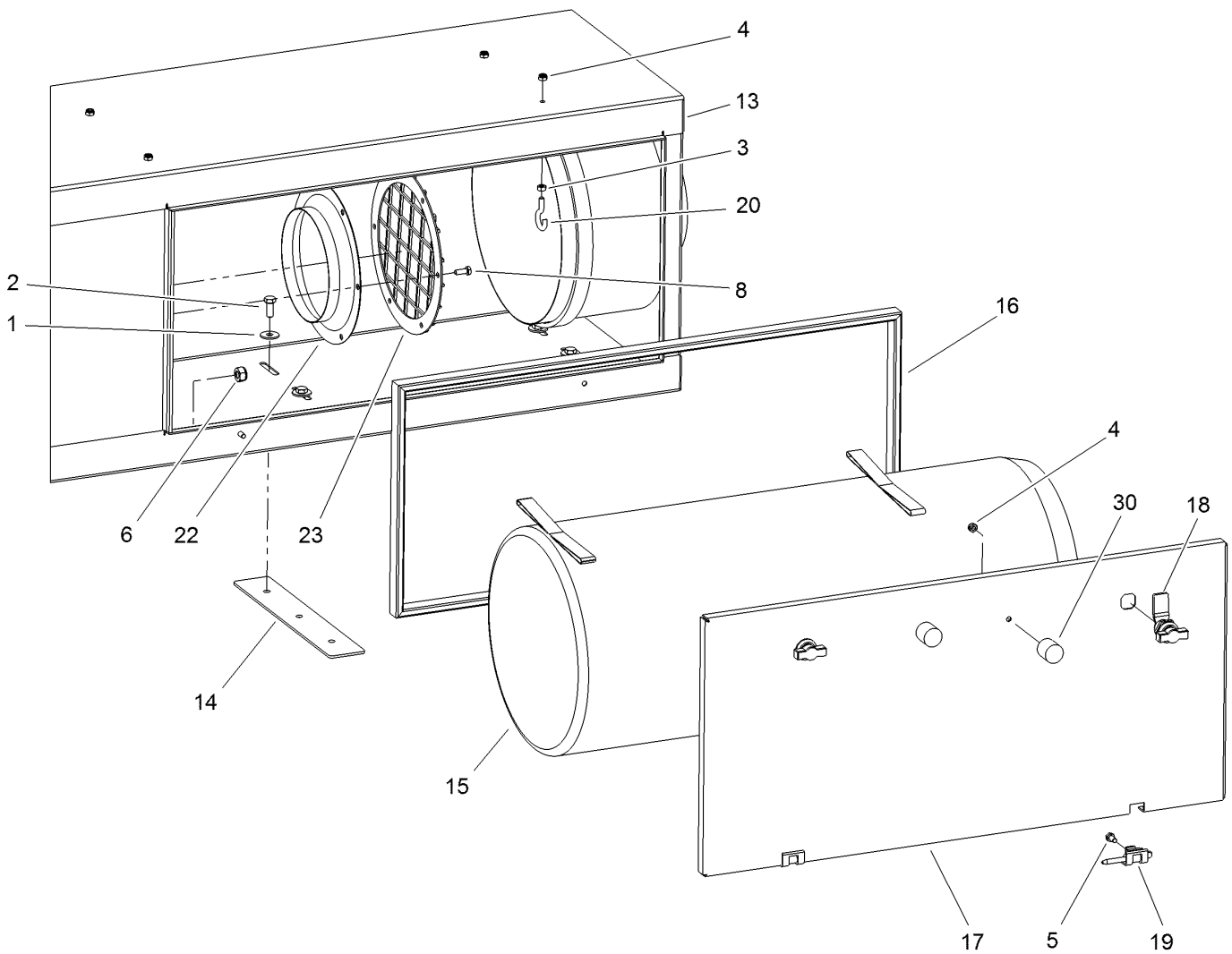
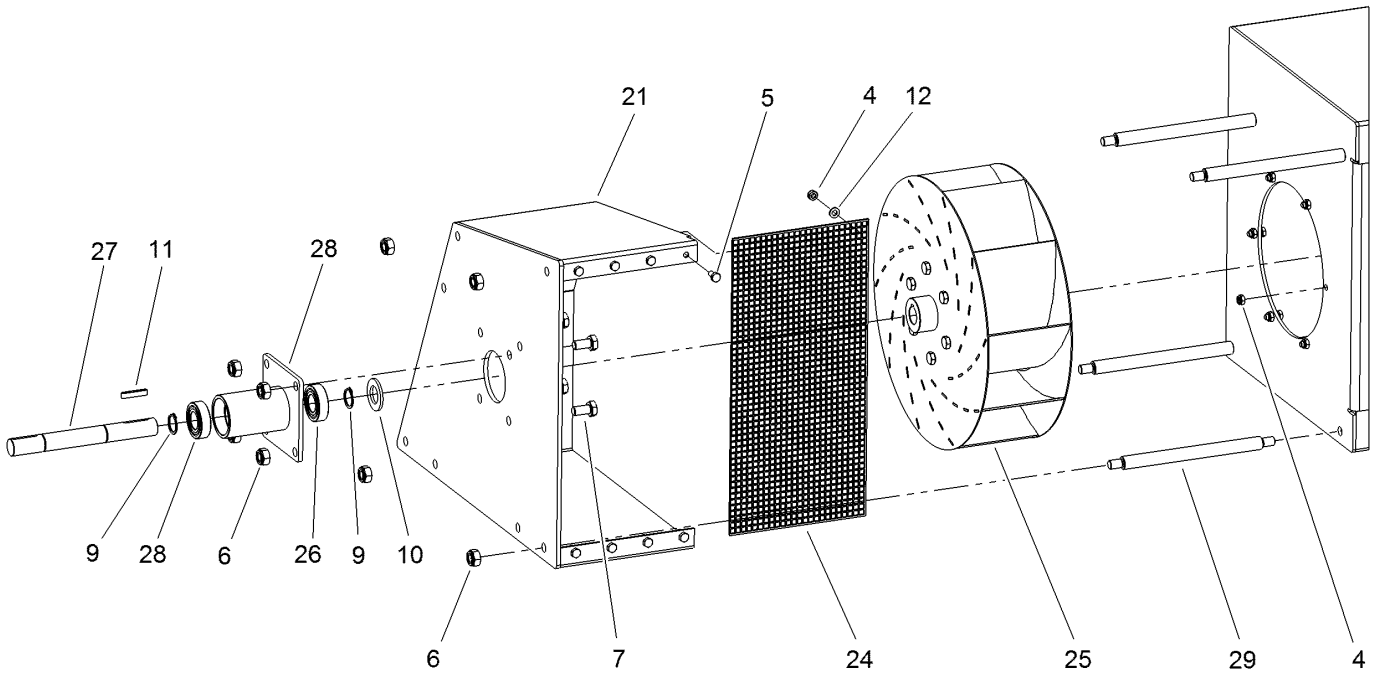
# Frame Assembly



## Frame Assembly (continued)

<i>Ref.</i>	<i>Part Number</i>	<i>Qty.</i>	<i>Description</i>	<i>Ref.</i>	<i>Part Number</i>	<i>Qty.</i>	<i>Description</i>
1	144-7706	2	Nut, Self Locking - M 14	9	144-8171	1	Top Link Pin
2	144-8271	2	Bolt M14 X 100 - ISO 4014	10	144-8478	2	Bottom 3-Point Pin
3	144-8475	2	Self Lock Nut M22 - ISO 10511	11	144-7710	3	R Clip
4	144-7944	12	Self Lock Nut M8 - ISO 10511	12	144-8479	2	Distance Bushing
5	144-7945	12	Bolt M8 X 20 - ISO 4017	13	144-8480	1	Reinforcement Bar
6	144-8159	4	Bolt M6 X 16 - ISO 4017	14	144-8481	2	Output Dividing Plate
7	144-8476	4	Self Lock Nut M6 - ISO 7043	15	144-8482	2	Top Rubber
8	144-8477	2	Eye Bolt M16	16	144-8483	1	Rubber Guide Strip
				17	144-8484	2	Clamp Strip Top Rubber
				18	144-7821	1	Main Frame Fc580

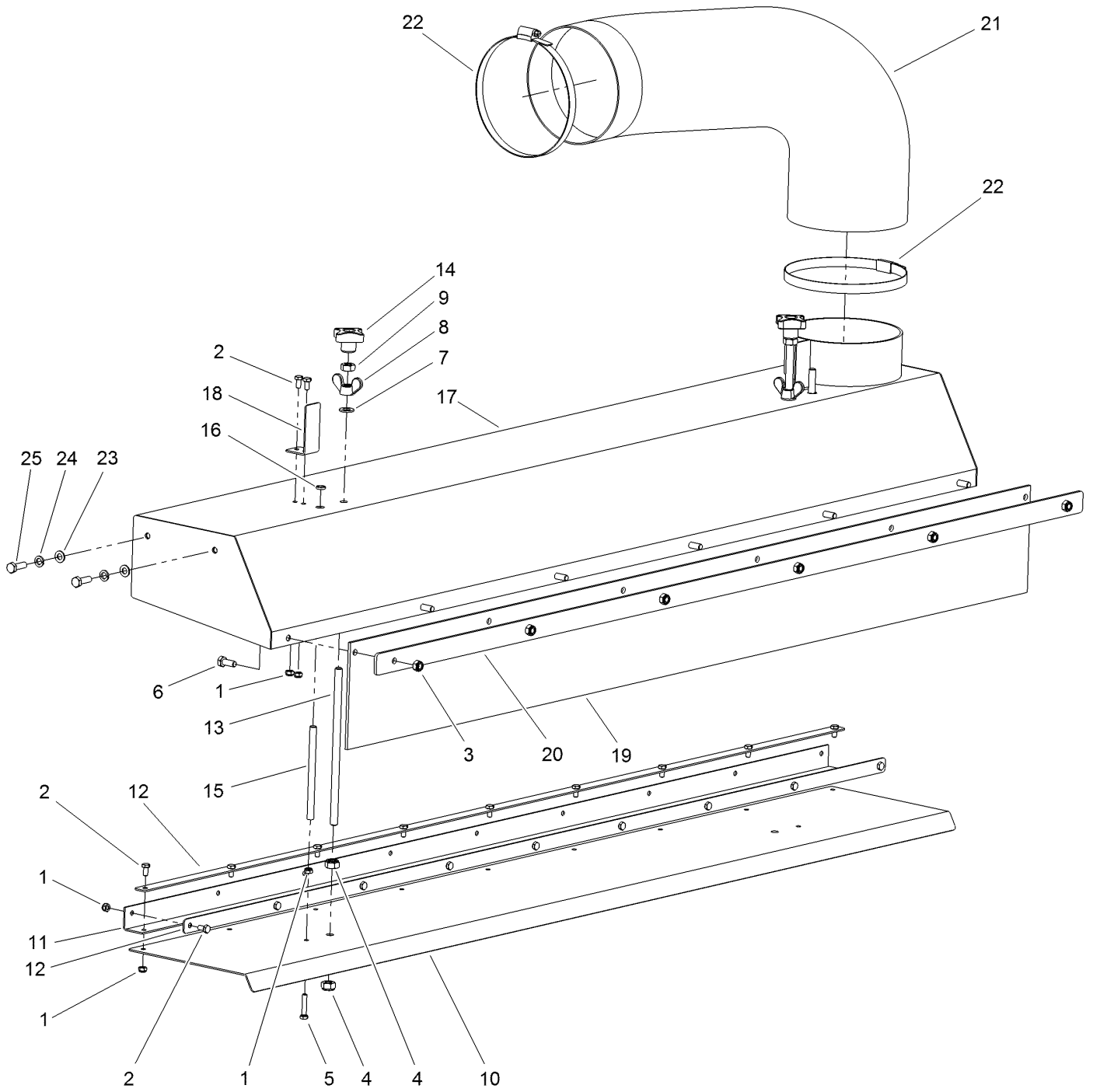
# Vacuum Assembly



## Vacuum Assembly (continued)

<i>Ref.</i>	<i>Part Number</i>	<i>Qty.</i>	<i>Description</i>	<i>Ref.</i>	<i>Part Number</i>	<i>Qty.</i>	<i>Description</i>
1	144-8013	9	Washer-Large M8 - Din 9021	16	144-8487	1	Vacuum Rubber L-1980
2	144-7945	9	Bolt M8 X 20 - ISO 4017	17	144-7823	1	Container Lid
3	144-8485	4	Nut M6 - Din 934	18	144-8488	2	Lock
4	144-7940	20	Self Lock Nut M6 - ISO 10511	19	144-8489	2	Hinge
5	144-8193	10	Bolt M6 X 12 - ISO 4017	20	144-8490	4	Cup Hook M6
6	144-7717	12	Nut, Self Locking - M 10	21	144-8491	1	Cover Fan Wheel
7	144-8109	4	Bolt M10 X 20 - ISO 4017	22	144-7825	1	Intake Manifold
8	144-8159	6	Bolt M6 X 16 - ISO 4017	23	144-7824	1	Intake Protection
9	144-8217	2	Circlip D-20 - Din 471	24	144-8492	1	Mesh Cover Wire Ø2Mm
10	144-7991	1	Washer M20 - ISO 7089	25	144-8493	1	Fan Wheel Complete With Hub
11	144-8426	1	Key 6X6X32 - Din 6885	26	144-8494	1	Bearing Support
12	144-8251	8	Washer M6 - ISO 7089	27	144-8495	1	Pulley Axle
13	144-7822	1	Vacuum Container	28	144-8218	2	Bearing 6004 2Hrs
14	144-8486	3	Mounting Strip	29	144-8496	4	Stud WI-173
15	144-7753	1	Dust Bag	30	144-8497	2	Vibration Damper

# Vacuum Head Assembly

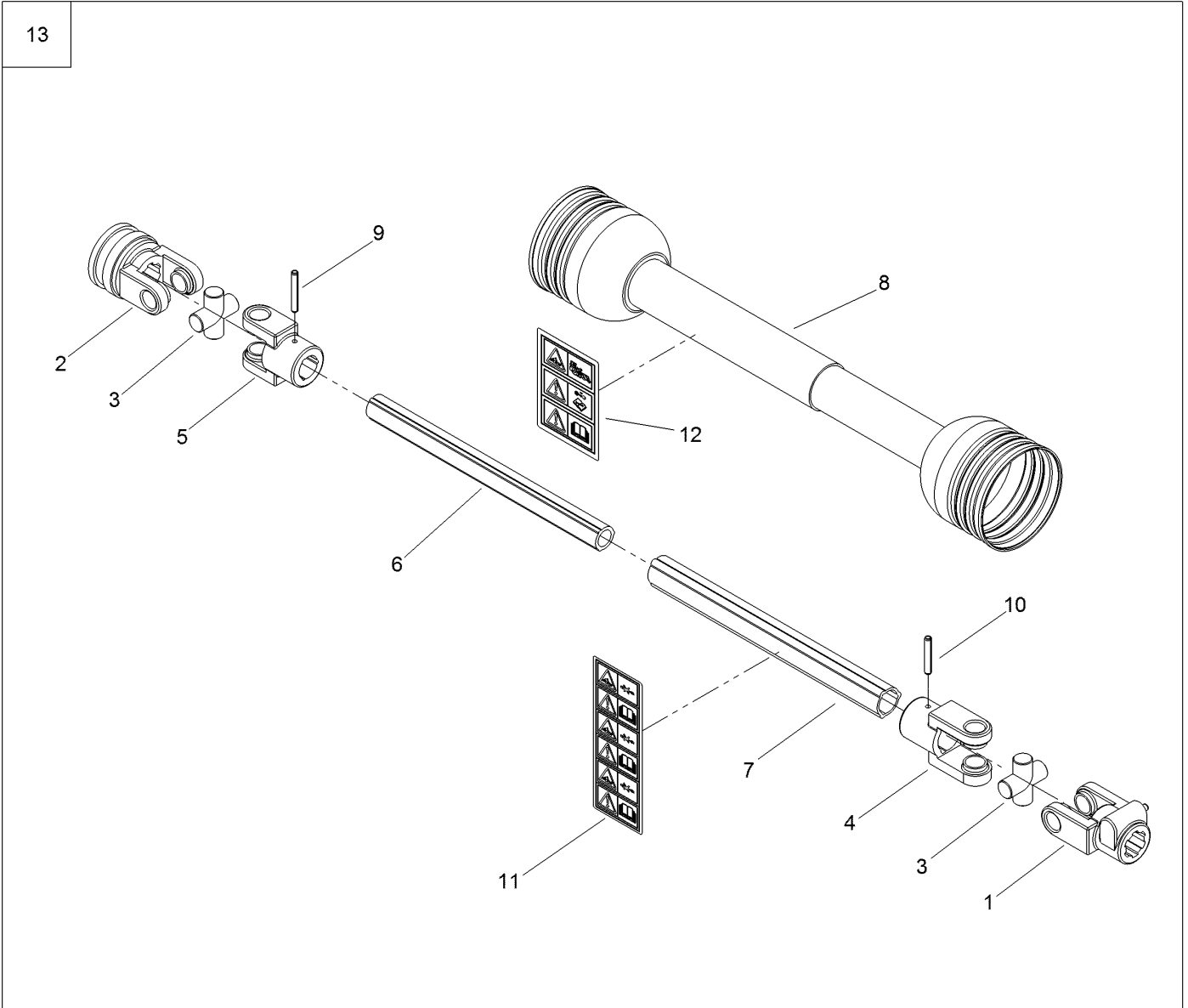




## Vacuum Head Assembly (continued)

<i>Ref.</i>	<i>Part Number</i>	<i>Qty.</i>	<i>Description</i>	<i>Ref.</i>	<i>Part Number</i>	<i>Qty.</i>	<i>Description</i>
1	144-7940	24	Self Lock Nut M6 - ISO 10511	13	144-8502	2	Threaded Rod M10 X 220
2	144-8193	22	Bolt M6 X 12 - ISO 4017	14	144-8503	2	Knob M10 - Din 6335
3	144-7944	6	Self Lock Nut M8 - ISO 10511	15	144-8504	2	Stud Height Indicator
4	144-7717	4	Nut, Self Locking - M 10	16	144-8505	2	Rubber Grommet 11.9X9.5
5	144-8194	2	Bolt M6 X 30 - ISO 4017	17	144-8506	1	Vacuum Head
6	144-7945	6	Bolt M8 X 20 - ISO 4017	18	144-8507	2	Height Indicator
7	144-7939	2	Washer M10 - ISO 7089	19	144-8508	1	Rubber Guide Strip
8	144-8498	2	Wing Nut M10 Din315	20	144-8484	1	Clamp Strip Top Rubber
9	144-8139	2	Nut M10 - Din 934	21	144-8509	1	Hose
10	144-8499	1	Valve Plate	22	144-8510	2	Hose Clamp Ø165
11	144-8500	1	Rubber Hinge	23	144-7929	4	Washer M8 - ISO 7089
12	144-8501	2	Clamp Strip Hinge	24	144-7930	4	Spring Washer M8 - Din 127
				25	144-8014	4	Bolt M8 X 25 - ISO 4017

# PTO Assembly



## PTO Assembly (continued)

<i>Ref.</i>	<i>Part Number</i>	<i>Qty.</i>	<i>Description</i>	<i>Ref.</i>	<i>Part Number</i>	<i>Qty.</i>	<i>Description</i>
1	144-8511	1	Splined Push Pin Yoke	7	144-8517	1	T20 Outer Tube
2	144-8512	1	Complete Collar Yoke Type 20	8	144-8518	1	Complete Guard 20-Series
3	144-8513	2	Cross And 4X Circlip Kit	9	144-8337	1	Roll Pin 8 X 55
4	144-8514	1	Outer Tube Yoke Type 20	10	144-8519	1	Roll Pin 8 X 50
5	144-8515	1	Inner Tube Yoke Type 20	11	144-8339	1	Decal - PTO Inner
6	144-8516	1	T20 Inner Tube	12	144-8338	1	Decal - PTO Outside
				13	144-7743	1	PTO

**BULLS EYE™**