



# Parts Catalog

## FieldCombo 770

Model No. 46420—Serial No. 321000001 and Up



# Ordering Replacement Parts

To order replacement parts, please supply the part number, the quantity, and the description of each part desired.

## Understanding Reference Numbers

Each identified part in an illustration has a reference number. The reference number for a part also appears in the parts list, along with other information about the part.

This catalog uses two special reference number formats, one to indicate parts in a service assembly and another to indicate the quantity of a given part in an illustration.

## Service Assembly Reference Numbers

Parts in service assemblies have reference numbers in the form a:b. The a represents the reference number of the entire service assembly and the b represents a sequential number unique to each part within the service assembly.

For example, a wheel assembly might be identified by reference number 6, the tire by 6:1, the valve by 6:2, and the wheel by 6:3. When you order the assembly identified by reference number 6, you receive all parts identified by reference numbers 6:1, 6:2, and 6:3. However, you may also order any part individually. Reference numbers of this type appear in illustration and in parts lists.

## Reference Numbers Indicating Quantity

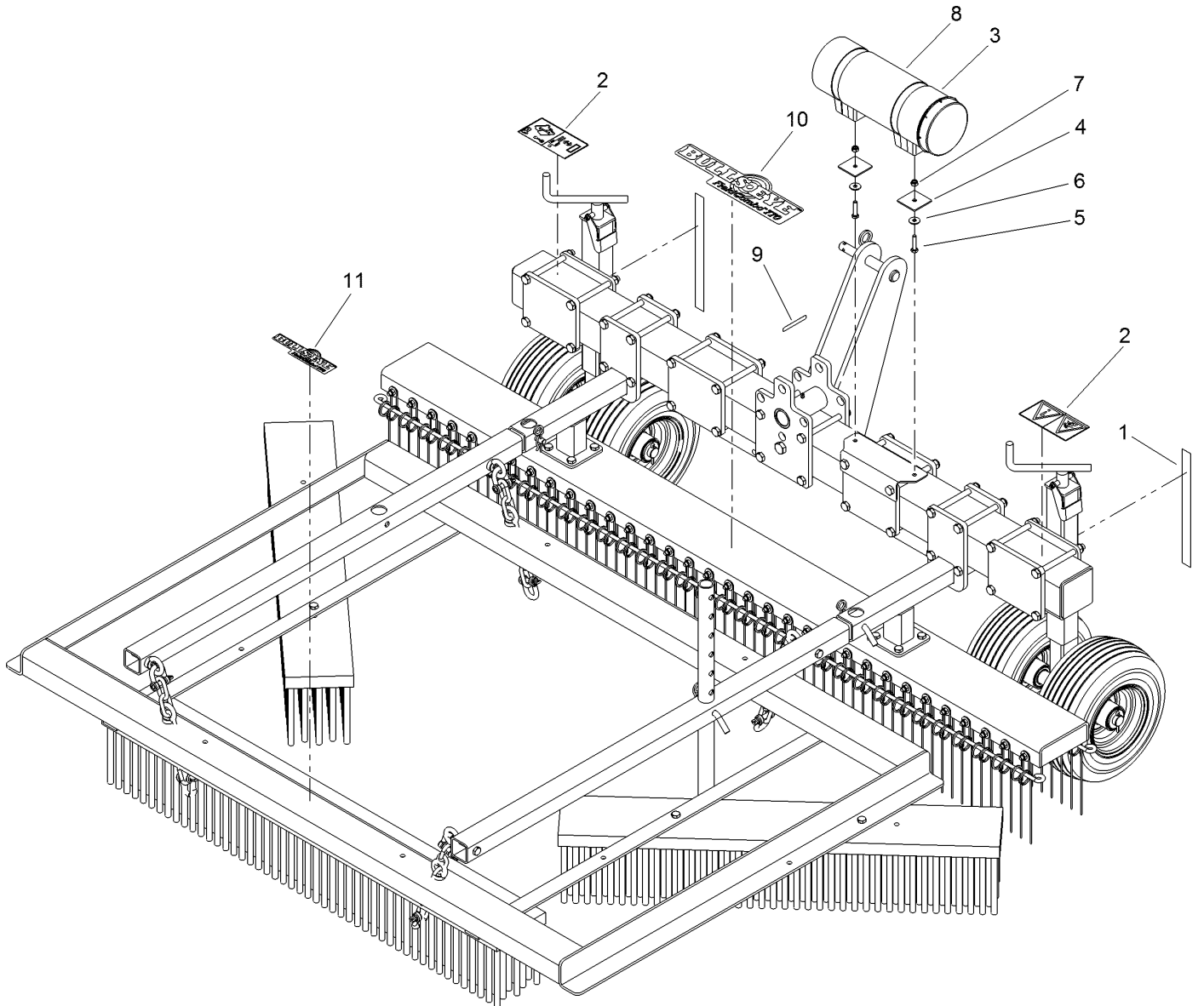
In an illustration, if a reference number indicates more than one part, the reference number has the form nX y. The n represents the quantity of the part, the X is the multiplication symbol, and the y represents the reference number.

For example, in an illustration, the reference number 2X 37 means that two of the parts identified by reference number 37 are indicated.

# Contents

Decal Assembly .....	4
Frame Assembly .....	6
3-Point and Rake Carrier Assembly .....	8
Rake Assembly .....	10
Wheel Set Assembly .....	12
Attachments and Accessories .....	14

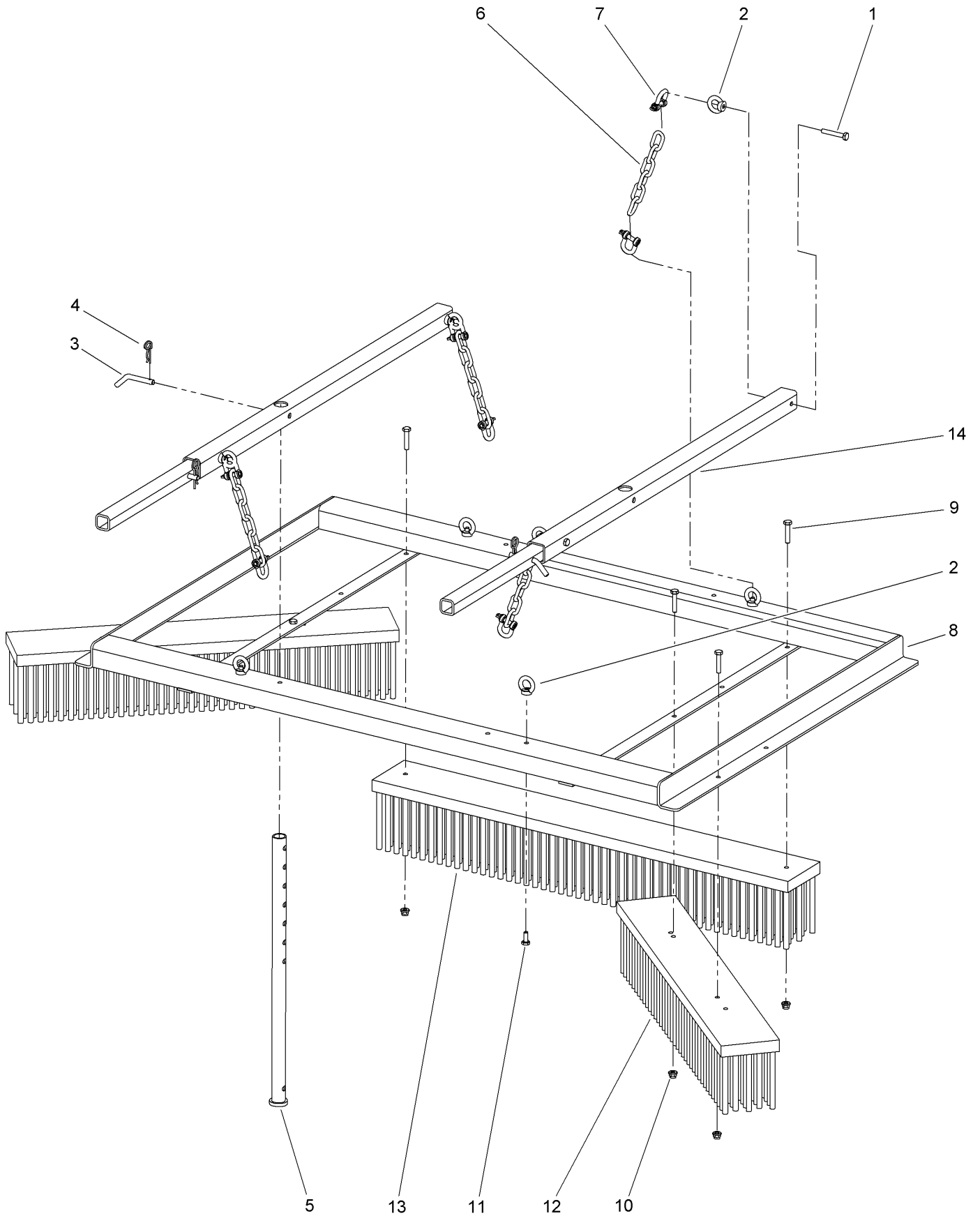
# Decal Assembly



## Decal Assembly (continued)

<i>Ref.</i>	<i>Part Number</i>	<i>Qty.</i>	<i>Description</i>	<i>Ref.</i>	<i>Part Number</i>	<i>Qty.</i>	<i>Description</i>
1	144-8258	2	Decal-Ruler	7	144-7944	2	Self Lock Nut M8 - ISO 10511
2	144-7905	2	Decal-Safety	8	105-0698	1	Decal-Caution
3	144-8128	1	Toolbox Complete	9	133-8061	1	Decal-Warning
4	144-8129	2	Toolbox Contraplate	10	136-3697	1	Decal-Fieldcombo 770
5	144-8130	2	Bolt M8 X 35 - ISO 4017	11	136-3664	1	Decal-Fieldcombo 770
6	144-8013	2	Washer-Large M8 - Din 9021				

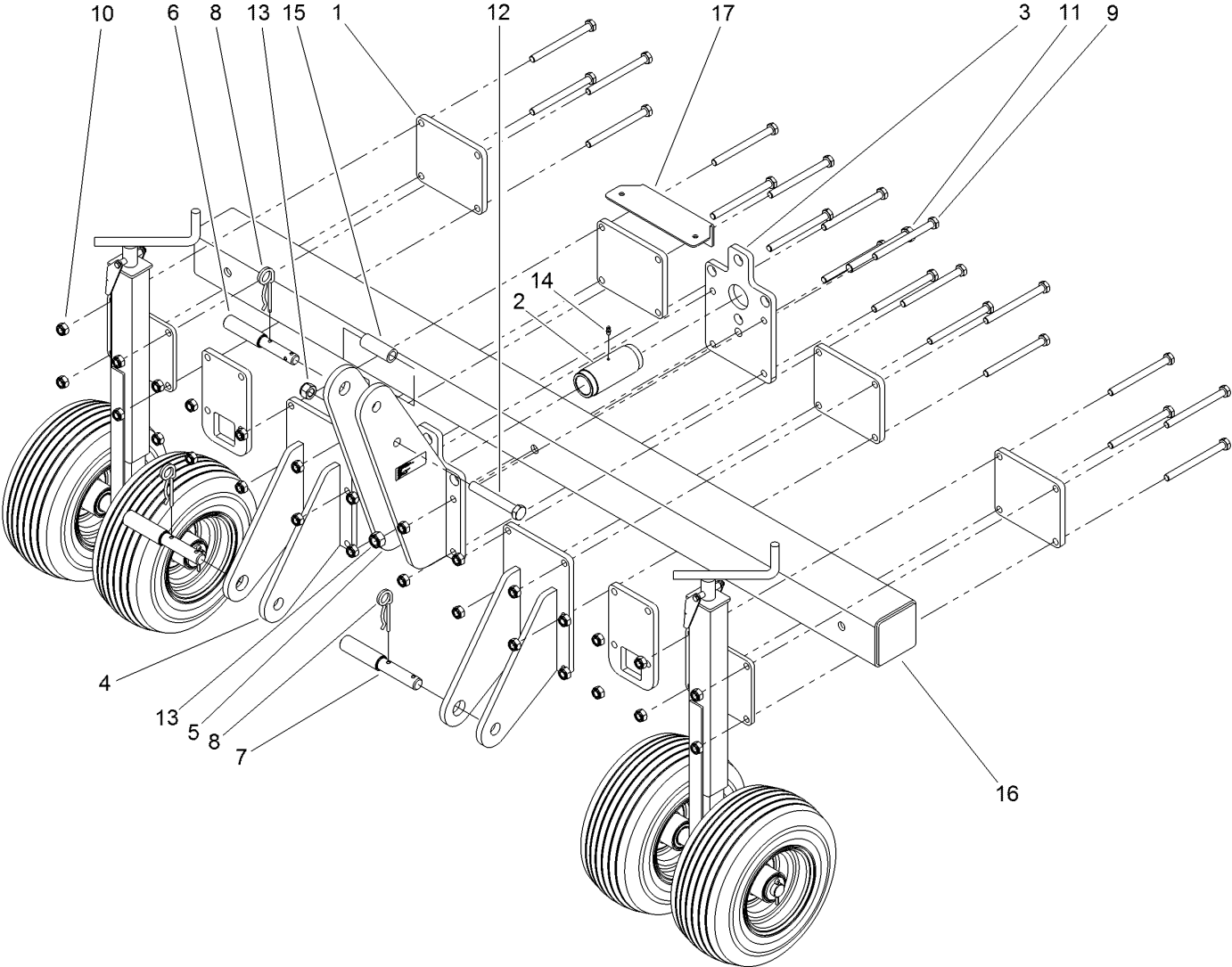
# Frame Assembly



## Frame Assembly (continued)

<i>Ref.</i>	<i>Part Number</i>	<i>Qty.</i>	<i>Description</i>	<i>Ref.</i>	<i>Part Number</i>	<i>Qty.</i>	<i>Description</i>
1	144-8340	4	Bolt M10 X 65 - ISO 4014	9	144-8345	6	Bolt M10 X 50 - ISO 4017
2	144-8111	8	Eye Nut M10 Din 582	10	144-8346	6	SI Nut With Washer Din 6926 M10
3	144-8341	3	Lock Pin	11	144-7920	4	Bolt M10 X 25 - ISO 4017
4	144-8162	3	R-Clip Round 3, Din 11024	12	144-7780	2	Brush
5	144-8342	1	Storage Stand	13	144-7781	1	Brush
6	144-8343	4	Chain Ø8 6 Shackles	14	144-8347	2	Leg For Brush
7	144-8112	8	D-Shackle D1-10				
8	144-8344	1	Frame For Brush				

# 3-Point and Rake Carrier Assembly

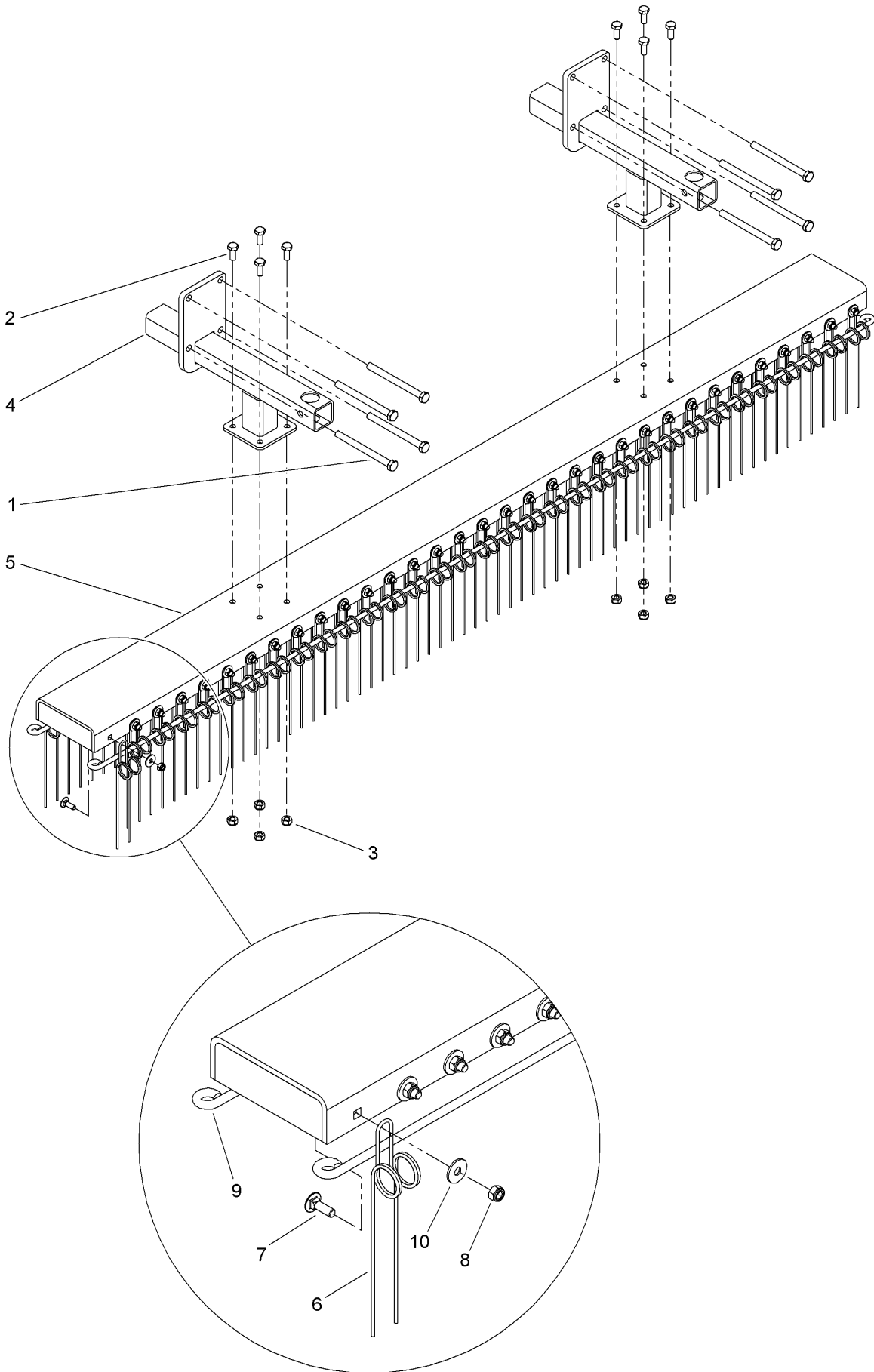




## 3-Point and Rake Carrier Assembly (continued)

<i>Ref.</i>	<i>Part Number</i>	<i>Qty.</i>	<i>Description</i>	<i>Ref.</i>	<i>Part Number</i>	<i>Qty.</i>	<i>Description</i>
1	144-8348	4	Mounting Plate Square 135	10	144-7705	28	Nut, Self Locking - M 12
2	144-8349	1	Pivot Bushing - Rake Section Main Tube	11	144-8354	1	Bolt M16 X 140 - ISO 4014
3	144-8350	1	Mounting Plate Rake Section Pivots	12	144-8355	1	Bolt M16 X 110 - ISO 4014
4	144-8351	2	Bottom Link ASM 3-Point	13	144-7951	2	Nut, Self Lock M16 10.9 - ISO 10511
5	144-8352	1	Top Link ASM	14	144-7961	1	Grease Nipple M6 Din 71412A
6	144-7711	1	Toplink Pin	15	144-8356	1	Distance Bushing 3-Point
7	144-7709	2	Pin, Three Point	16	144-8357	1	Main Beam Rake Carrier
8	144-7710	3	R Clip	17	144-8358	1	Plate
9	144-8353	20	Bolt M12 X 140 - ISO 4014				

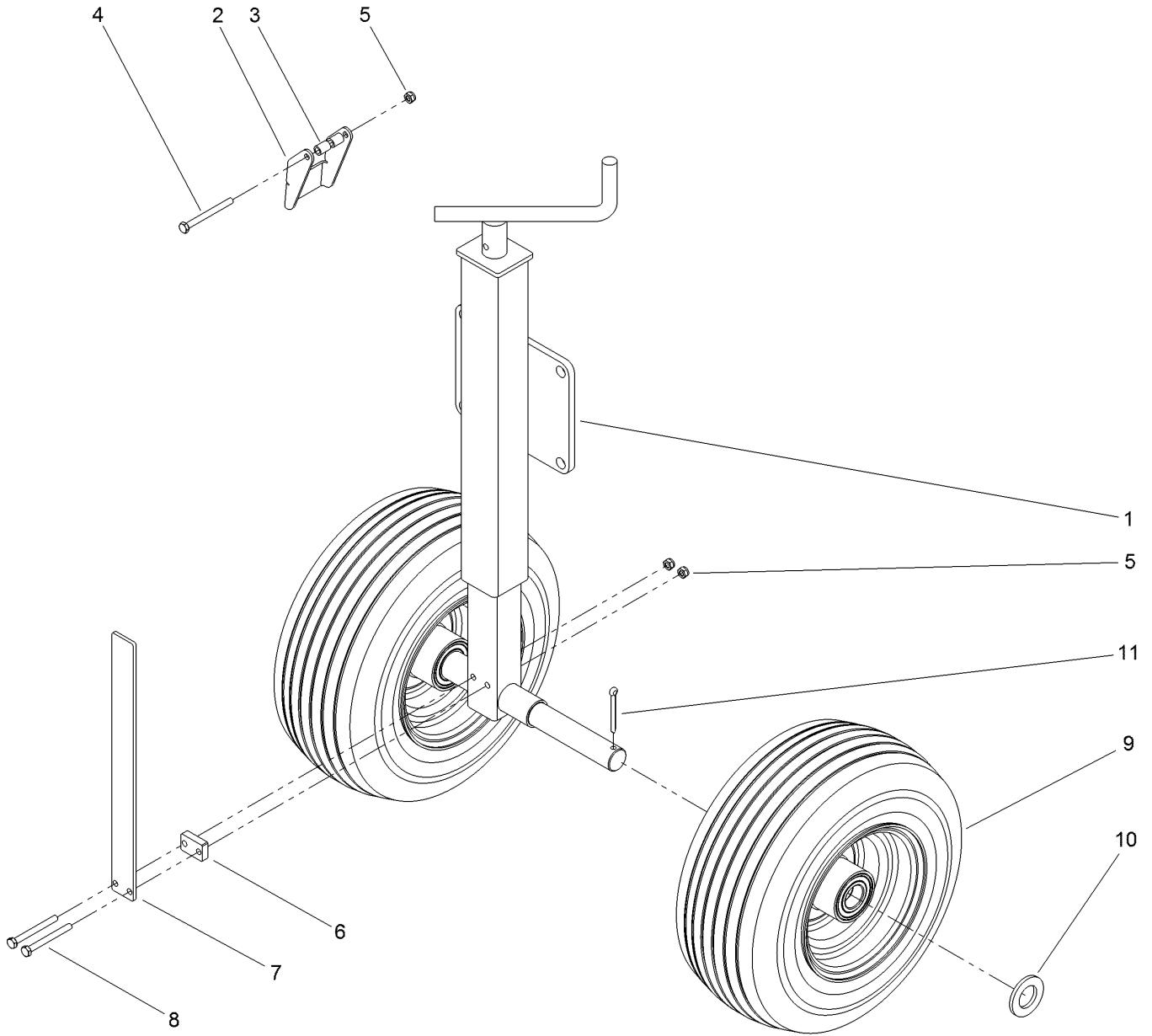
# Rake Assembly



## Rake Assembly (continued)

<i>Ref.</i>	<i>Part Number</i>	<i>Qty.</i>	<i>Description</i>	<i>Ref.</i>	<i>Part Number</i>	<i>Qty.</i>	<i>Description</i>
1	144-8353	8	Bolt M12 X 140 - ISO 4014	7	144-8360	66	Mh Bolt M8 X 25 ISO 8677
2	144-7920	8	Bolt M10 X 25 - ISO 4017	8	144-7944	66	Self Lock Nut M8 - ISO
3	144-7717	8	Nut, Self Locking - M 10				10511
4	144-8359	2	Leg Fc770 Short Version	9	144-8361	2	Rope For Spring Tines
5	144-7815	1	Fc770 Beam	10	144-8013	66	Washer-Large M8 - Din
6	144-7779	66	Tine Fc770				9021

# Wheel Set Assembly



## Wheel Set Assembly (continued)

<i>Ref.</i>	<i>Part Number</i>	<i>Qty.</i>	<i>Description</i>	<i>Ref.</i>	<i>Part Number</i>	<i>Qty.</i>	<i>Description</i>
1	144-8362	1	Jack	6	144-7964	1	Distance Block
2	144-8274	1	Lock Plate	7	144-8363	1	Height Indicator Strip, L- 315
3	144-8275	2	Distance Bushing	8	144-8252	2	Bolt M6 X 60 - ISO 4014
4	144-8092	1	Bolt M6 X 65 - ISO 4014	9	144-8364	2	Wheel Agri 31 - 13X5.00-6
5	144-7940	3	Self Lock Nut M6 - ISO 10511	10	144-8365	2	Washer M24 - ISO 7089
				11	144-8366	2	Cotter Pin 5 X 40 - Din 94

# Attachments and Accessories

## For 46420 FieldCombo 770

Product Name	Model/Part
Towable Manual Lift Kit.....	46421
Magnet.....	46422

**Notes:**

**BULLS EYE™**