



## CE Kit

### Z Master® Professional 7500-D Series Riding Mower with 60in or 72in TURBO FORCE® Mower

Model No. 144-0378

Model No. 144-0410

## Installation Instructions

# Installation

## Loose Parts

Use the chart below to verify that all parts have been shipped.

Procedure	Description	Qty.	Use
<b>1</b>	No parts required	–	Prepare the machine.
<b>2</b>	No parts required	–	Remove the belt covers.
<b>3</b>	No parts required	–	Remove the reverse-drive cover.
<b>4</b>	Right pulley-mount guard Right pulley guard Clip Push nut Flange-head bolt (1/4 x 3/4 inch)	1 1 3 3 3	Installing the right pulley-mount guard and pulley guard.
<b>5</b>	Left pulley-mount guard Left pulley guard Clip Push nut Flange-head bolt (1/4 x 3/4 inch) Flange-head bolt (5/16 x 3/4 inch) Flange nut (5/16 inch)	1 1 4 4 4 1 1	Installing the left pulley-mount guard and pulley guard.
<b>6</b>	Brace bracket	1	Installing the brace bracket.
<b>7</b>	Skirt guard assembly Front, upper support rod Front, lower support rod Left, upper support rod Right, upper support rod Left, lower support rod Right, lower support rod Flange nut (5/16 inch) Washer—For 72-inch decks only Flange-head bolt (5/16 x 3/4 inch)	1 1 1 1 1 1 1 5 1 5	Install the support rods to the skirt guard assembly.



<b>Procedure</b>	<b>Description</b>	<b>Qty.</b>	<b>Use</b>
<b>8</b>	Left frame guard	1	Install the frame guards.
	Right frame guard	1	
	Flange-head bolt (5/16 x 3/4 inch)	4	
	Flange nut (5/16 inch)	4	
<b>9</b>	Left CE cover	1	Install the CE covers.
	Right CE cover	1	
<b>10</b>	Captive adapter	1	Install the floor pan.
	Flange-head bolt (1/4 x 3/4 inch)	2	
	Flat washer	2	
	Clip	2	
	Push nut	2	
<b>11</b>	Decal 133-5623	1	Apply the decals.
	Decal 144-6905—60-inch decks with 25 HP Yanmar diesel engine only	1	
	Decal 144-6906—72-inch decks with 25 HP Yanmar diesel engine only	1	
	Decal 144-6907—60-inch decks with 37 HP Yanmar diesel engine only	1	
	Decal 144-6908—72-inch decks with 37 HP Yanmar diesel engine only	1	

# 1

## Preparing the Machine

No Parts Required

### Procedure

1. Park the machine on a level surface.
2. Move the motion-control levers to the NEUTRAL-LOCK position.
3. Engage the parking brake.
4. Lower the mower deck to the lowest height of cut.
5. Shut off the engine and remove the key.

# 2

## Removing the Belt Covers

No Parts Required

### Procedure

Remove the belt covers (Figure 1).

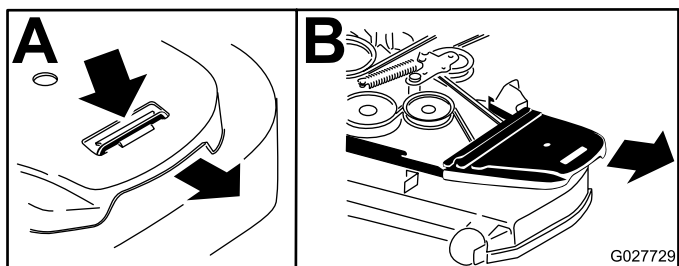


Figure 1

# 3

## Removing the Reverse-Drive Cover

No Parts Required

### Procedure

Remove the 3 self-tapping screws securing the reverse-drive cover and remove the cover from the right side of the mower deck (Figure 2).

Retain the 3 self-tapping screws for installation in 4 [Installing the Right Pulley-Mount Guard and Pulley Guard](#) (page 3).

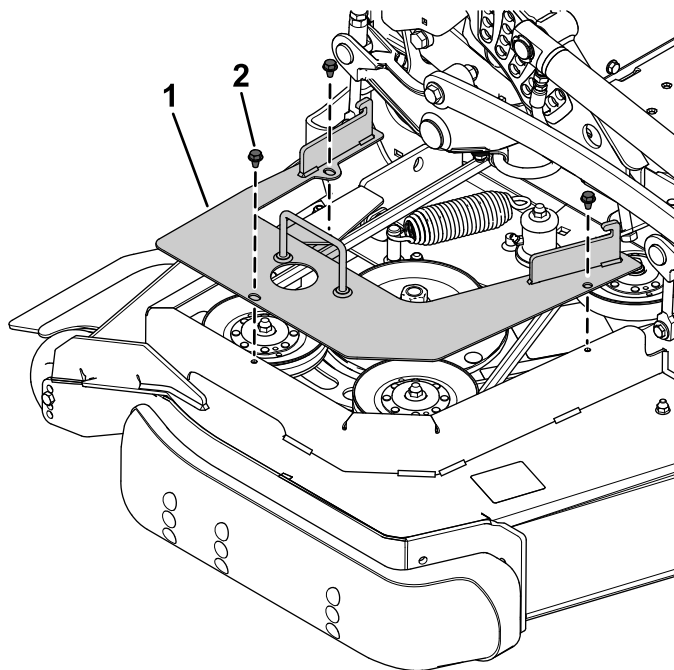


Figure 2

1. Reverse-drive cover
2. Self-tapping screw

# 4

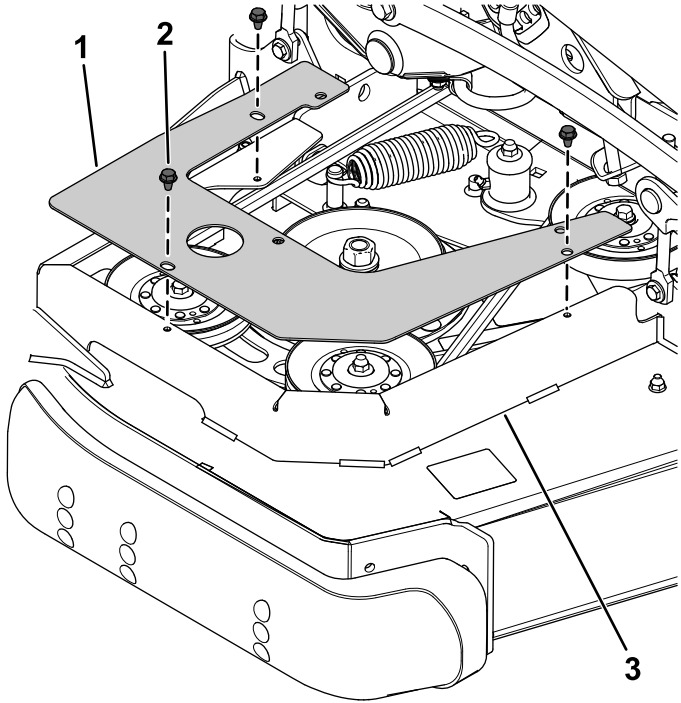
## Installing the Right Pulley-Mount Guard and Pulley Guard

**Parts needed for this procedure:**

1	Right pulley-mount guard
1	Right pulley guard
3	Clip
3	Push nut
3	Flange-head bolt (1/4 x 3/4 inch)

**Procedure**

1. Secure the right pulley-mount guard to the belt guard using the previously removed 3 self-tapping screws (Figure 3).

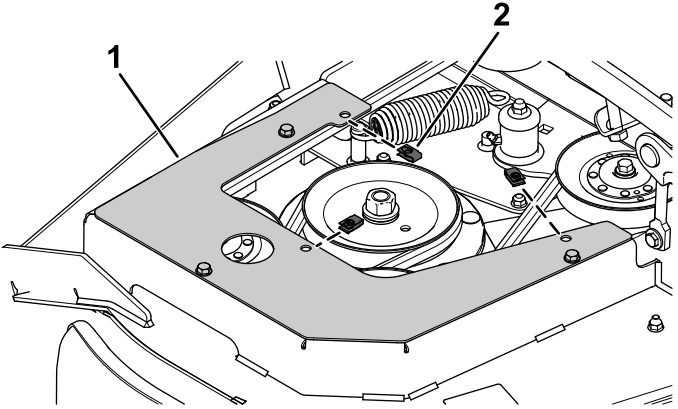


**Figure 3**

g342078

1. Right pulley-mount guard
2. Self-tapping screw
3. Belt guard

2. Install 3 clips on to the right pulley-mount guard (Figure 4).

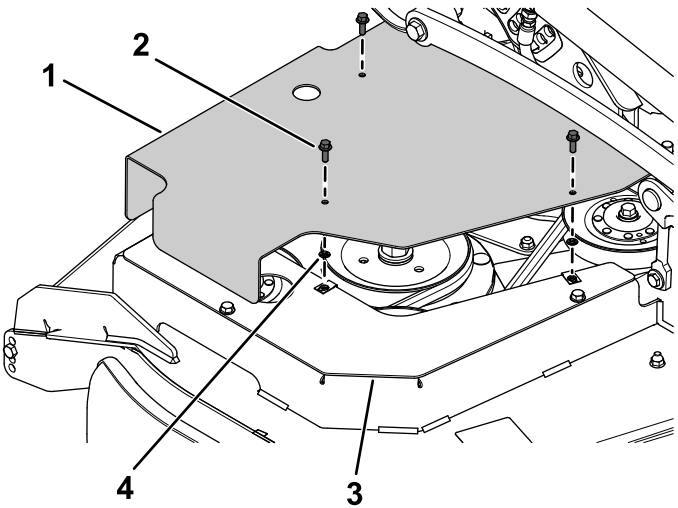


g342076

**Figure 4**

1. Right pulley-mount guard
2. Clip

3. Secure the right pulley guard to the right pulley-mount guard using 3 flange-head bolts (1/4 x 3/4 inch) and 3 push nuts (Figure 5).



g342077

**Figure 5**

1. Right pulley guard
2. Flange-head bolt (1/4 x 3/4 inch)
3. Right pulley-mount guard
4. Push nut

# 5

## Installing the Left Pulley-Mount Guard and Pulley Guard

### Parts needed for this procedure:

1	Left pulley-mount guard
1	Left pulley guard
4	Clip
4	Push nut
4	Flange-head bolt (1/4 x 3/4 inch)
1	Flange-head bolt (5/16 x 3/4 inch)
1	Flange nut (5/16 inch)

### Procedure

1. Remove the button-head bolt (5/16 x 3/4 inch) and flange nut (5/16 inch) from the left side of the mower deck (Figure 6).

Retain the button-head bolt (5/16 x 3/4 inch) and flange nut (5/16 inch).

**Note:** Raise the mower deck to assist with installing the button-head bolt (5/16 x 3/4 inch) and flange nut (5/16 inch) in the next step.

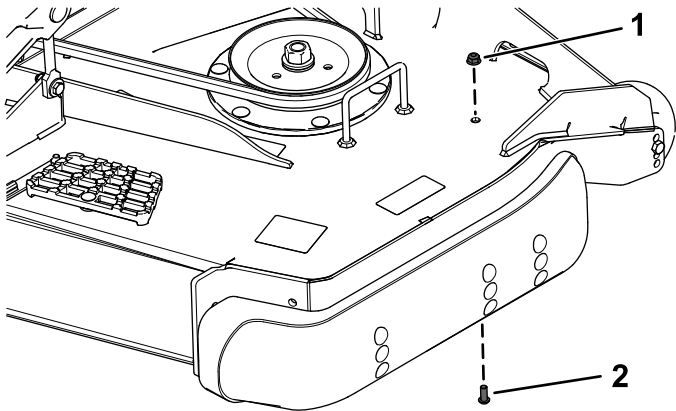


Figure 6

1. Flange nut (5/16 inch)
2. Button-head bolt (5/16 x 3/4 inch)

2. Secure the left pulley-mount guard to the mower deck using the previously removed button-head bolt (5/16 x 3/4 inch) and flange nut (5/16 inch) and new flange-head bolt (5/16 x 3/4 inch) and flange nut (5/16 inch) as shown in Figure 7.

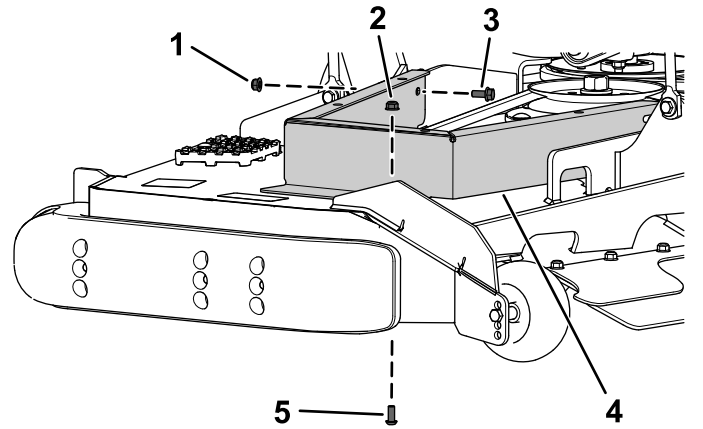


Figure 7

1. New flange nut (5/16 inch)
2. Previously removed flange nut (5/16 inch)
3. New flange-head bolt (5/16 x 3/4 inch)
4. Left pulley-mount guard
5. Previously removed button-head bolt (5/16 x 3/4 inch)

3. Install 4 clips on to the left pulley-mount guard (Figure 8).

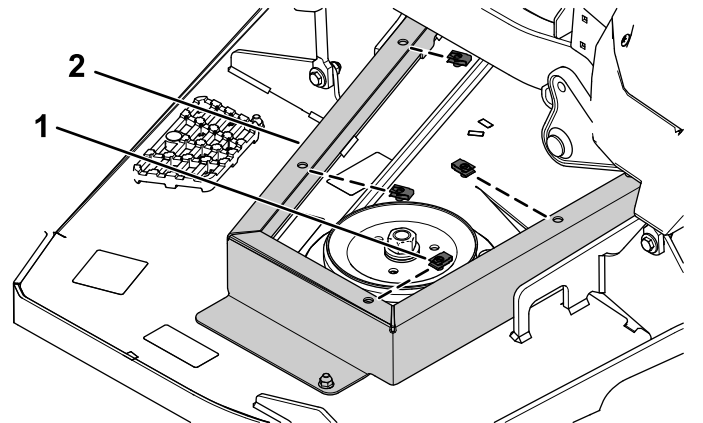


Figure 8

1. Clip
2. Left pulley-mount guard

- Secure the left pulley guard to the left pulley-mount guard using 4 flange-head bolts (1/4 x 3/4 inch) and 4 push nuts (Figure 9).

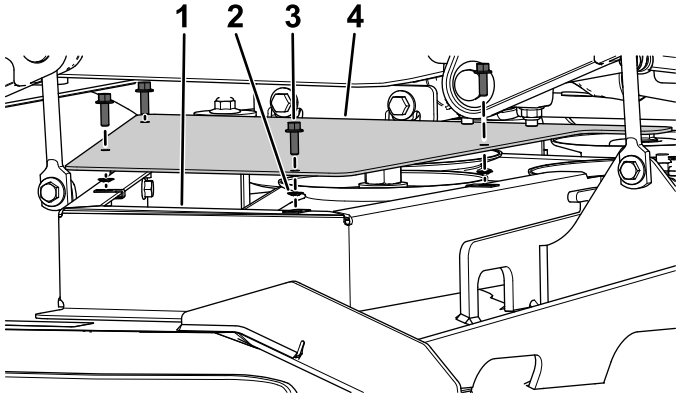


Figure 9

- |                            |                                      |
|----------------------------|--------------------------------------|
| 1. Left pulley-mount guard | 3. Flange-head bolt (1/4 x 3/4 inch) |
| 2. Push nut                | 4. Left pulley guard                 |

- Remove the 2 locknuts (1/4 inch) from the rubber bumpers on the cross brace (Figure 11). Retain the 2 locknuts (1/4 inch).

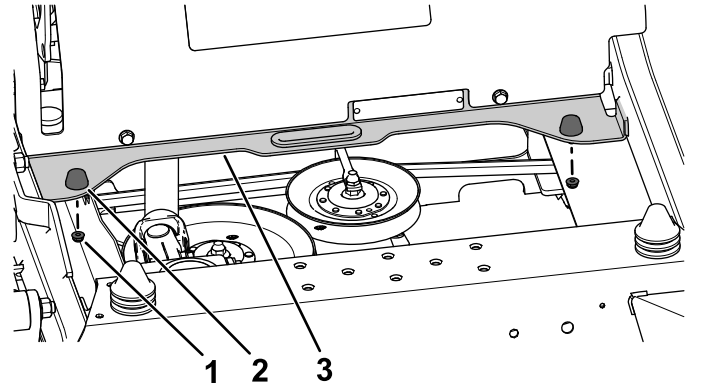


Figure 11

- |                       |                |
|-----------------------|----------------|
| 1. Locknut (1/4 inch) | 3. Cross brace |
| 2. Rubber bumper      |                |

- Secure the brace bracket to the cross brace and rubber bumpers using the previously removed 2 locknuts (1/4 inch) as shown in Figure 12.

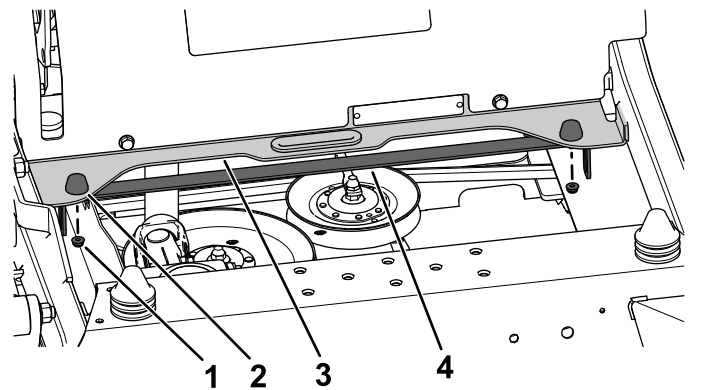


Figure 12

- |  |                  |
|--|------------------|
| 1. Previously removed locknut (1/4 inch) | 3. Cross brace   |
| 2. Rubber bumper                         | 4. Brace bracket |

# 6

## Installing the Brace Bracket

Parts needed for this procedure:

1	Brace bracket
---	---------------

### Procedure

- Remove the floor pan (Figure 10).

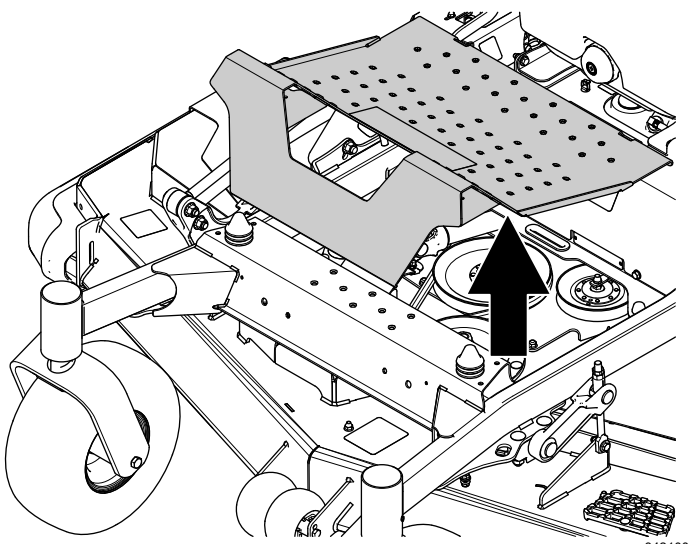


Figure 10

# 7

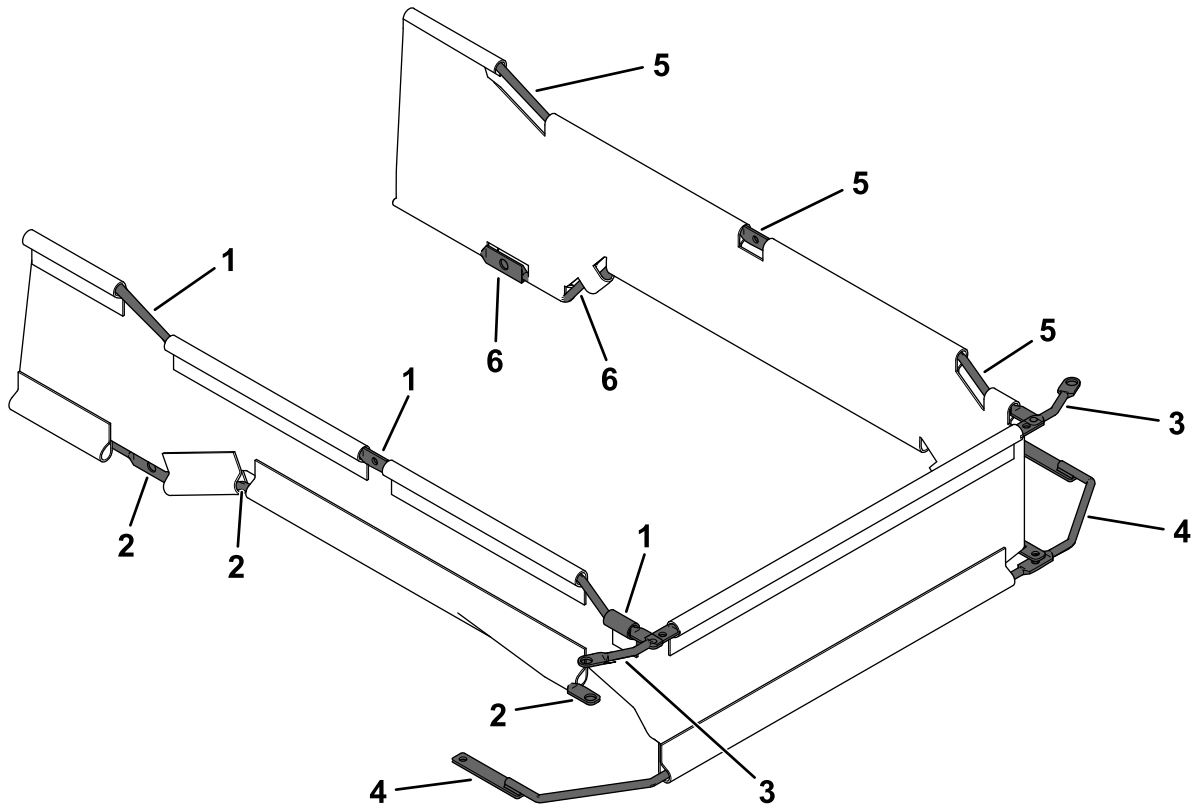
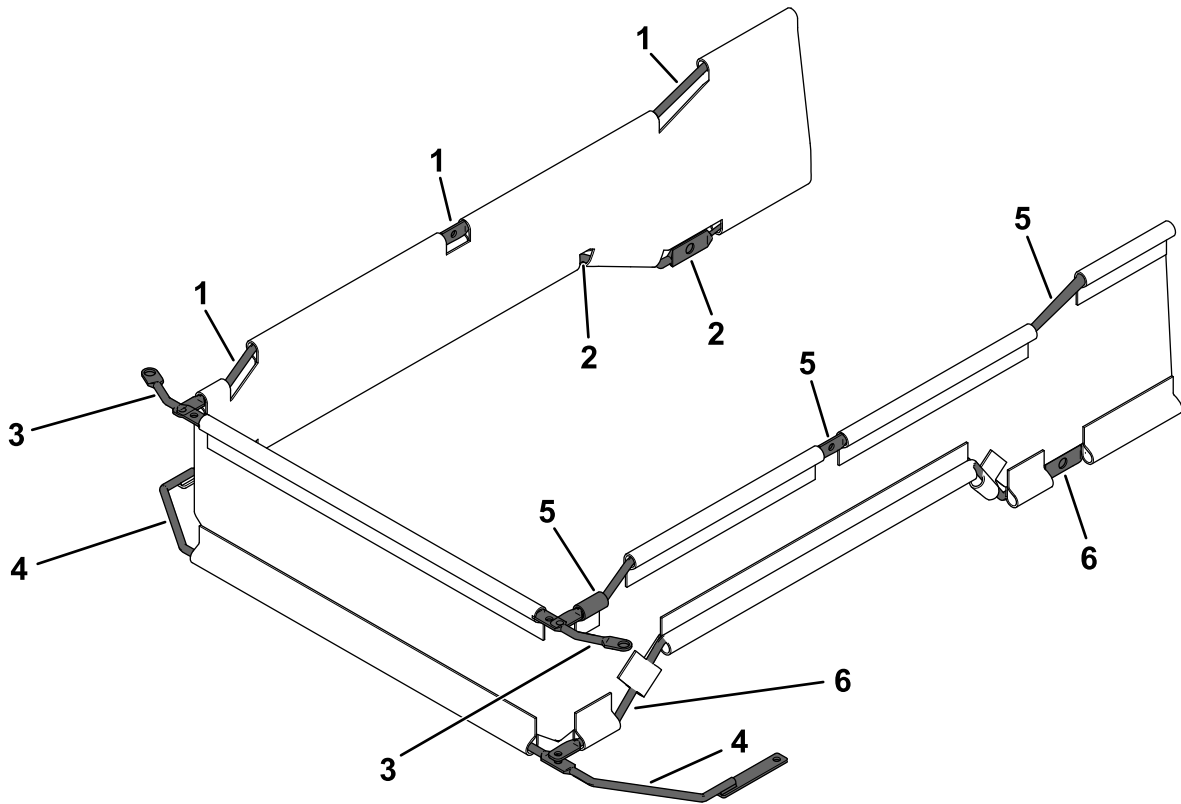
## Installing the Support Rods to the Skirt Guard Assembly

**Parts needed for this procedure:**

1	Skirt guard assembly
1	Front, upper support rod
1	Front, lower support rod
1	Left, upper support rod
1	Right, upper support rod
1	Left, lower support rod
1	Right, lower support rod
5	Flange nut (5/16 inch)
1	Washer—For 72-inch decks only
5	Flange-head bolt (5/16 x 3/4 inch)

### Procedure

1. Thread 1 front, upper support rod, 1 front, lower support rod, 1 left, upper support rod, 1 right, upper support rod, 1 left, lower support rod, and 1 right, lower support rod into the skirt guard assembly (Figure 13).



**Figure 13**

g342234

- |                             |                             |                            |
|-----------------------------|-----------------------------|----------------------------|
| 1. Right, upper support rod | 3. Front, upper support rod | 5. Left, upper support rod |
| 2. Right, lower support rod | 4. Front, lower support rod | 6. Left, lower support rod |



2. Remove the 2 button-head bolts (5/16 x 3/4 inch) and 2 flange nuts (5/16 inch) from the front of the mower deck (Figure 14).

Retain the 2 button-head bolts (5/16 x 3/4 inch) and 2 flange nuts (5/16 inch).

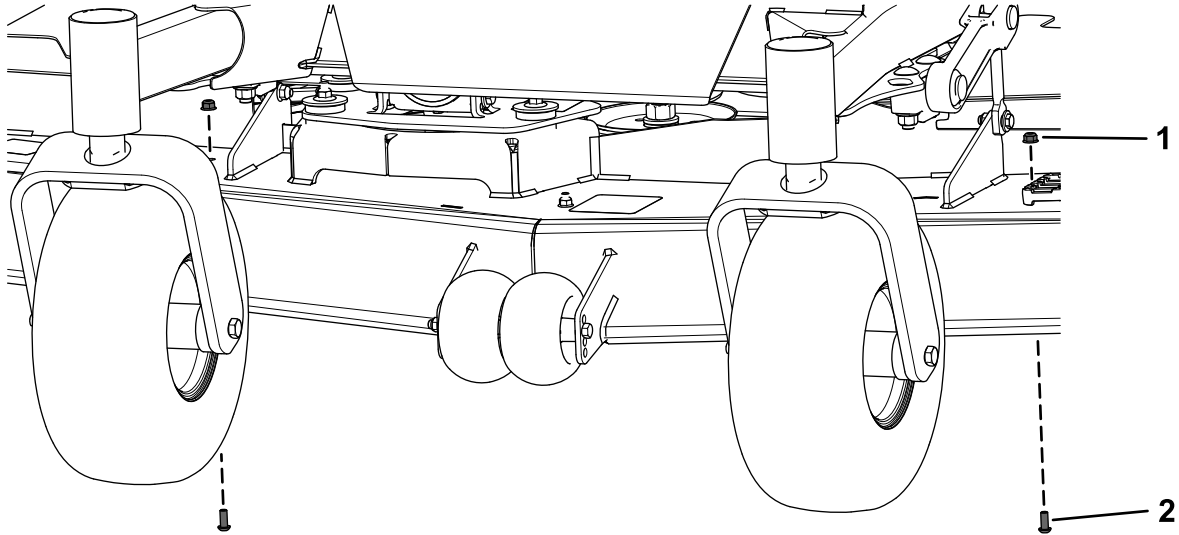


Figure 14

g342305

1. Flange nut (5/16 inch)
2. Button-head bolt (5/16 x 3/4 inch)

3. Position the assembled skirt guard underneath the frame, behind the caster wheels.
4. Secure the front, lower support rod using the previously removed 2 button-head bolts (5/16 x 3/4 inch) and 2 flange nuts (5/16 inch) as shown in Figure 15.

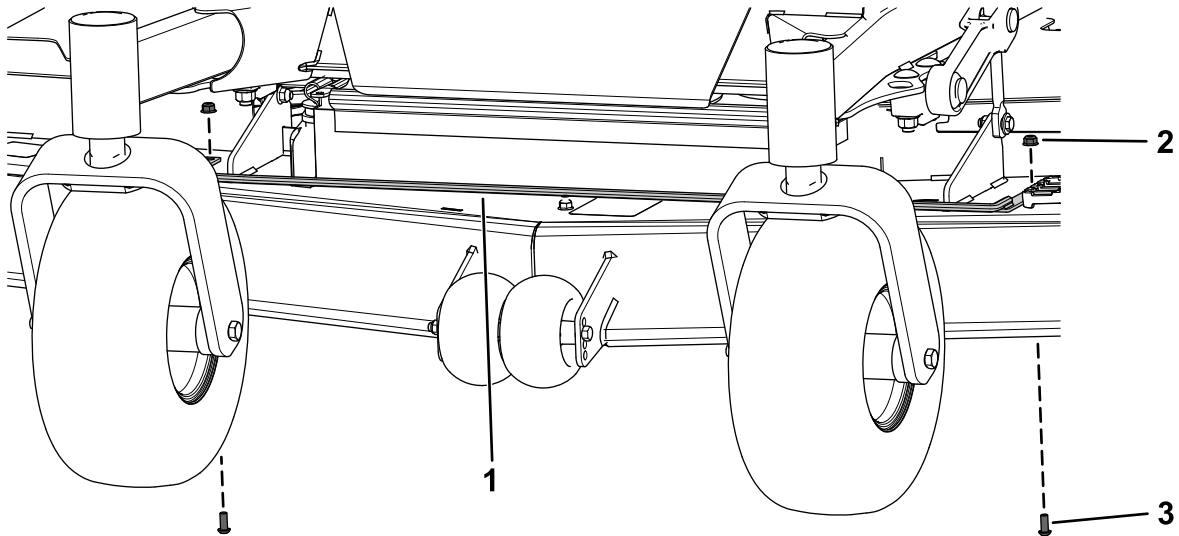
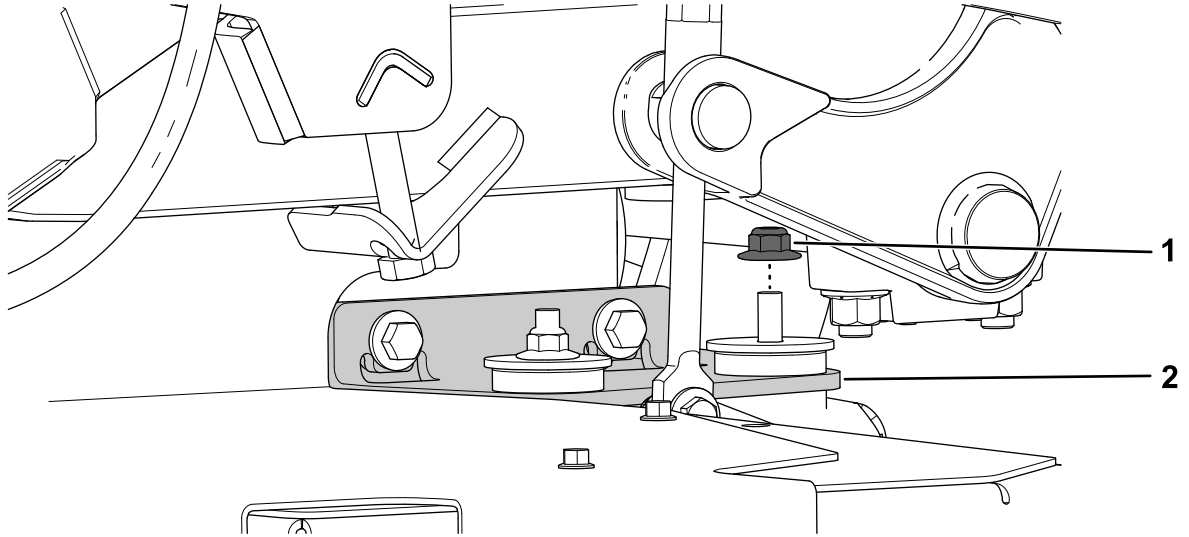


Figure 15

g342308

1. Front, lower support rod
2. Previously removed flange nut (5/16 inch)
3. Previously removed button-head bolt (5/16 x 3/4 inch)

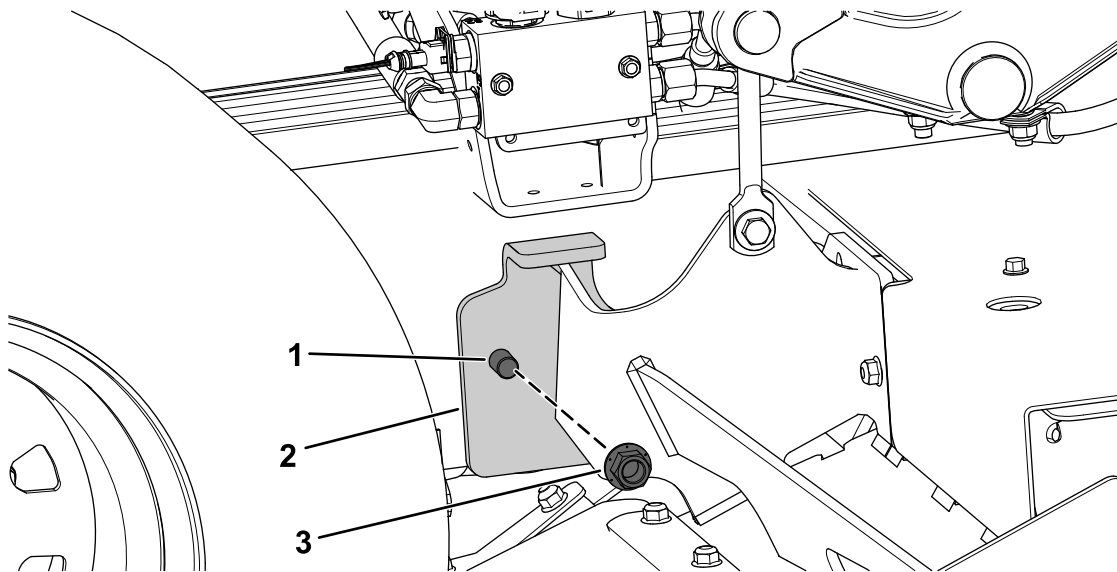
5. Remove the front, right flange nut (3/8 inch) from the gearbox mount and the hex-head bolt (1/2 x 2-1/2 inches), washer, and locknut (1/2 inch) from each mower deck strut (Figure 16 and Figure 17). Retain the flange nut (3/8 inch), 2 hex-head bolts (1/2 x 2-1/2 inches), 2 washers, and 2 locknuts (1/2 inch).



**Figure 16**

1. Flange nut (3/8 inch)

2. Gearbox mount



**Figure 17**

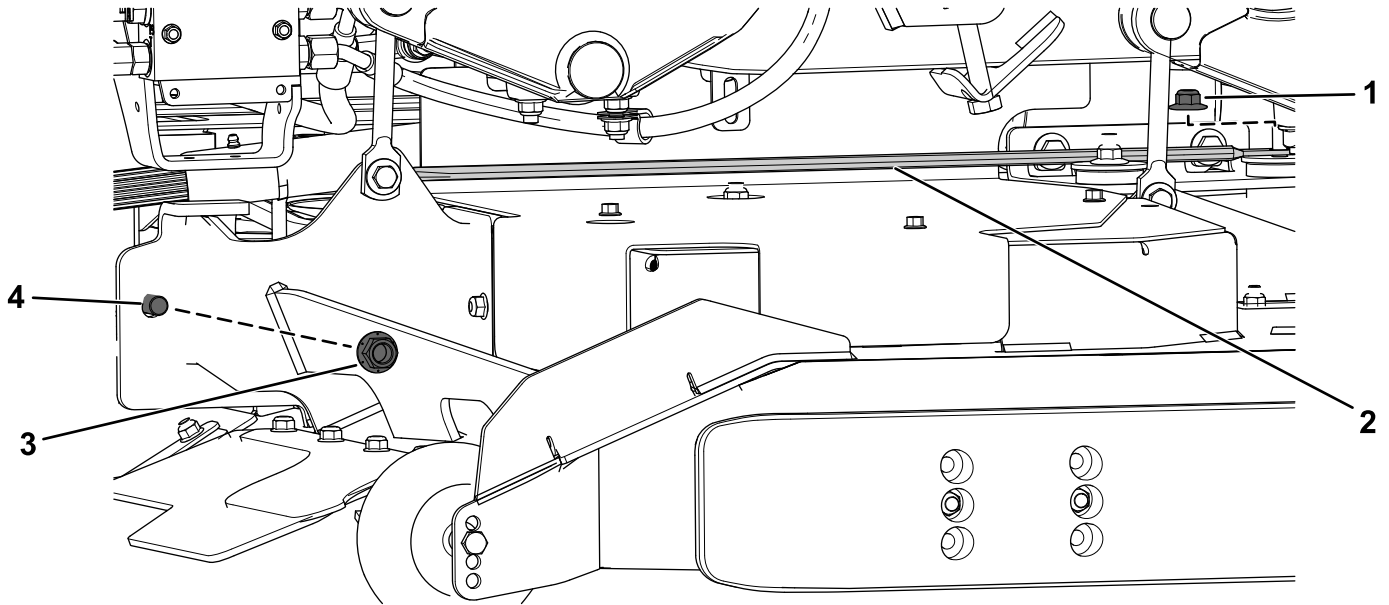
Right side shown

1. Hex-head bolt (1/2 x 2-1/2 inches)

3. Locknut (1/2 inch)

2. Right mower deck strut

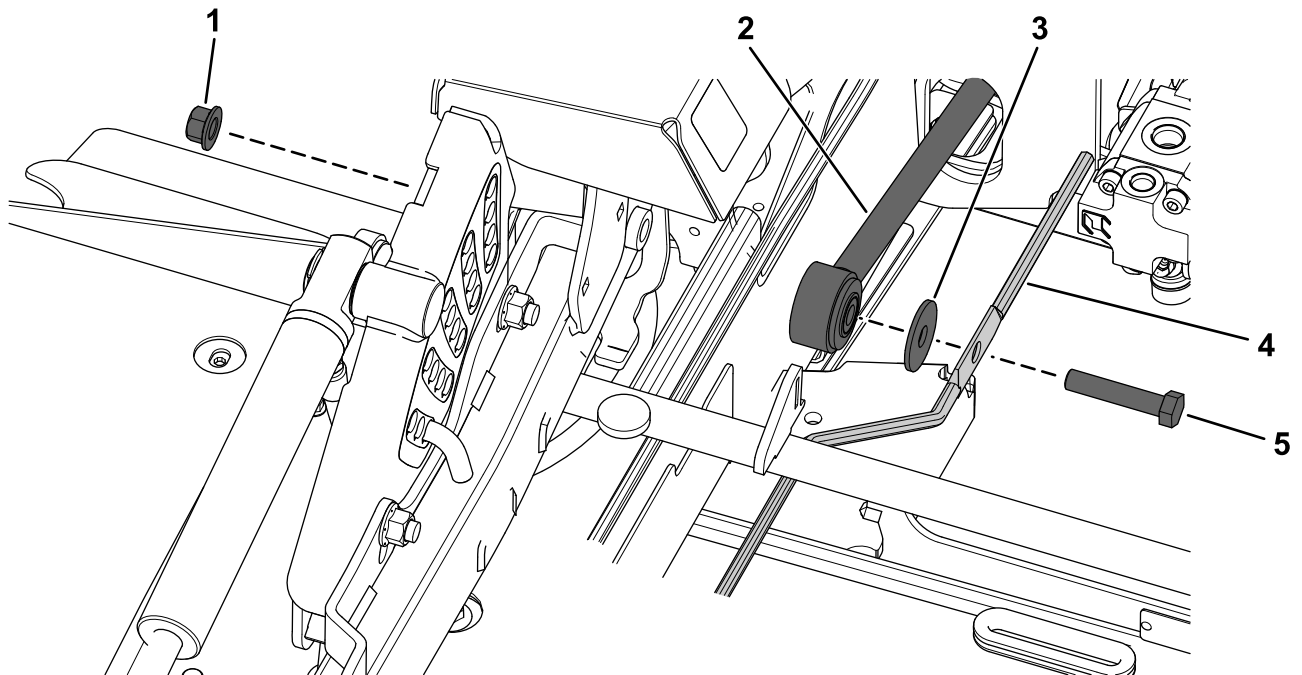
6. Secure the right, lower support rod to the deck strut and gearbox mount using the previously removed flange nut (3/8 inch), hex-head bolt (1/2 x 2-1/2 inches), washer, and locknut (1/2 inch) as shown in [Figure 18](#) and [Figure 19](#).



g342352

**Figure 18**

- |  |  |
|--|--|
| <ol style="list-style-type: none"> <li>1. Previously removed flange nut (3/8 inch)</li> <li>2. Right, lower support rod</li> </ol> | <ol style="list-style-type: none"> <li>3. Previously removed locknut (1/2 inch)</li> <li>4. Previously removed hex-head bolt (1/2 x 2-1/2 inches)</li> </ol> |
|--|--|

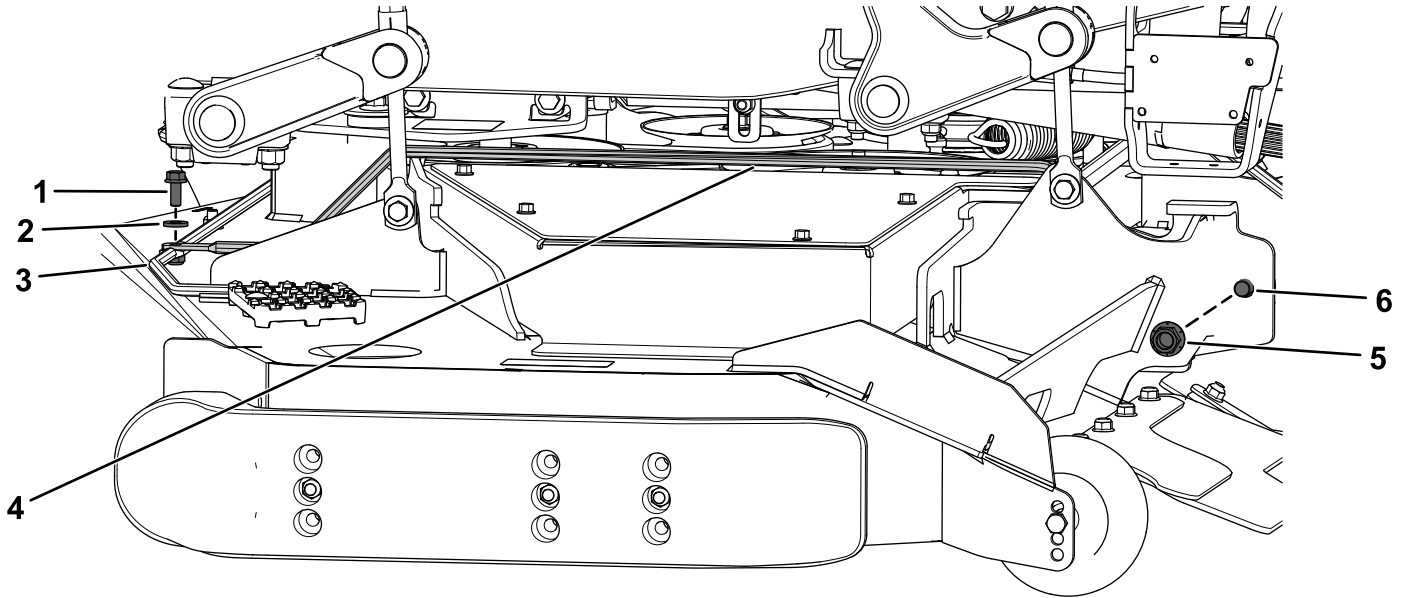


g342515

**Figure 19**

- |   |   |
|---|---|
| <ol style="list-style-type: none"> <li>1. Previously removed locknut (1/2 inch)</li> <li>2. Deck strut</li> <li>3. Previously removed washer</li> </ol> | <ol style="list-style-type: none"> <li>4. Right, lower support rod</li> <li>5. Previously removed hex-head bolt (1/2 x 2-1/2 inches)</li> </ol> |
|---|---|

7. Secure the left, lower support rod to the front, lower support rod using the previously removed hex-head bolt (1/2 x 2-1/2 inches) and locknut (1/2 inch) and new 1 flange-head bolt (5/16 x 3/4 inch), 1 washer, and 1 flange nut (5/16 inch) as shown in [Figure 20](#).

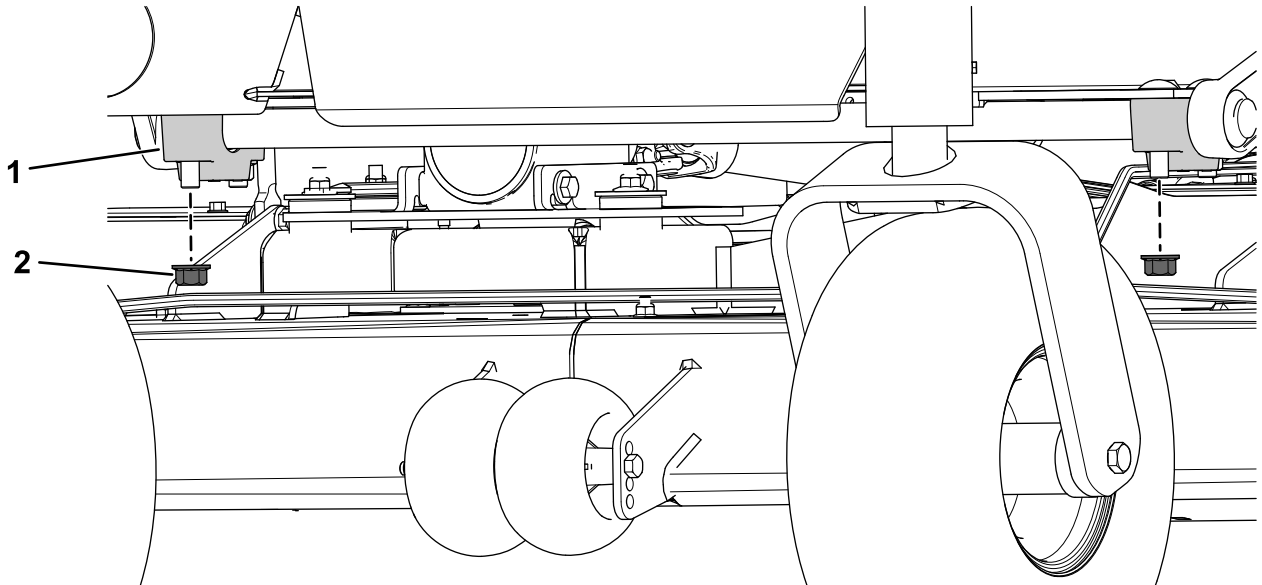


g342351

**Figure 20**

- |  |  |
|--|--|
| 1. New flange-head bolt (5/16 x 3/4 inch)                          | 4. Left, lower support rod                               |
| 2. New washer—for 72-inch decks only; do not use on 60-inch decks. | 5. Previously removed locknut (1/2 inch)                 |
| 3. New flange nut (5/16 inch)                                      | 6. Previously removed hex-head bolt (1/2 x 2-1/2 inches) |

8. Remove the 2 locknuts (1/2 inch) from the front cross-shaft supports ([Figure 21](#)).

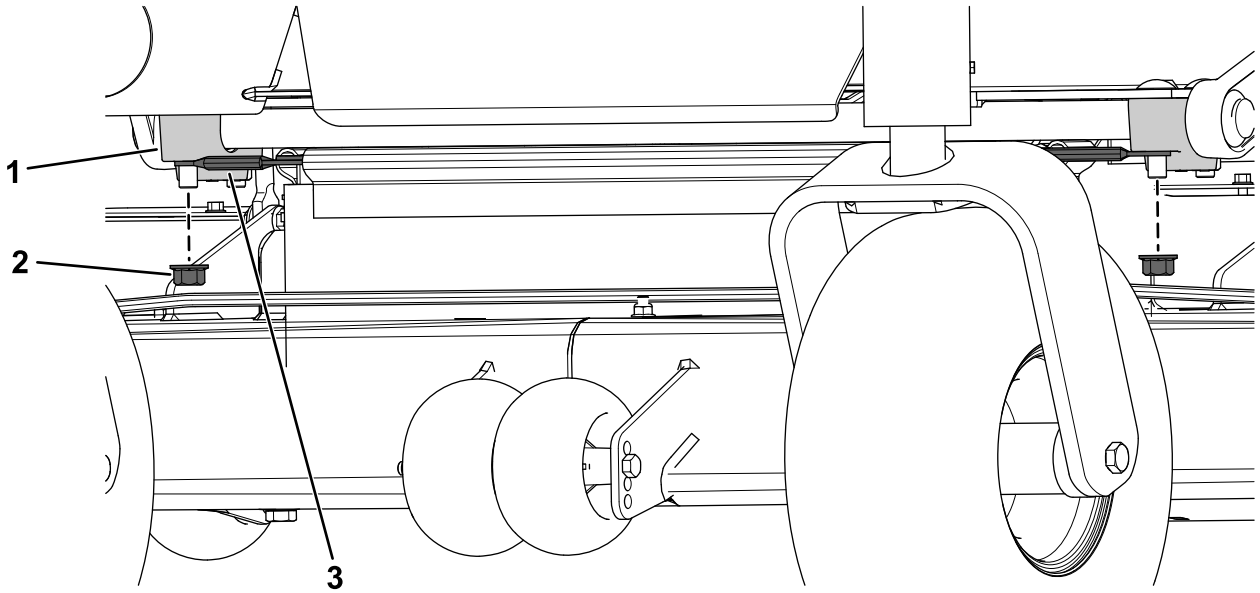


g342348

**Figure 21**

- |                        |                       |
|------------------------|-----------------------|
| 1. Cross-shaft support | 2. Locknut (1/2 inch) |
|------------------------|-----------------------|

9. Secure the front, upper support rod to the front cross-shaft supports using the previously removed 2 locknuts (1/2 inch) to the front cross-shaft support (Figure 22).

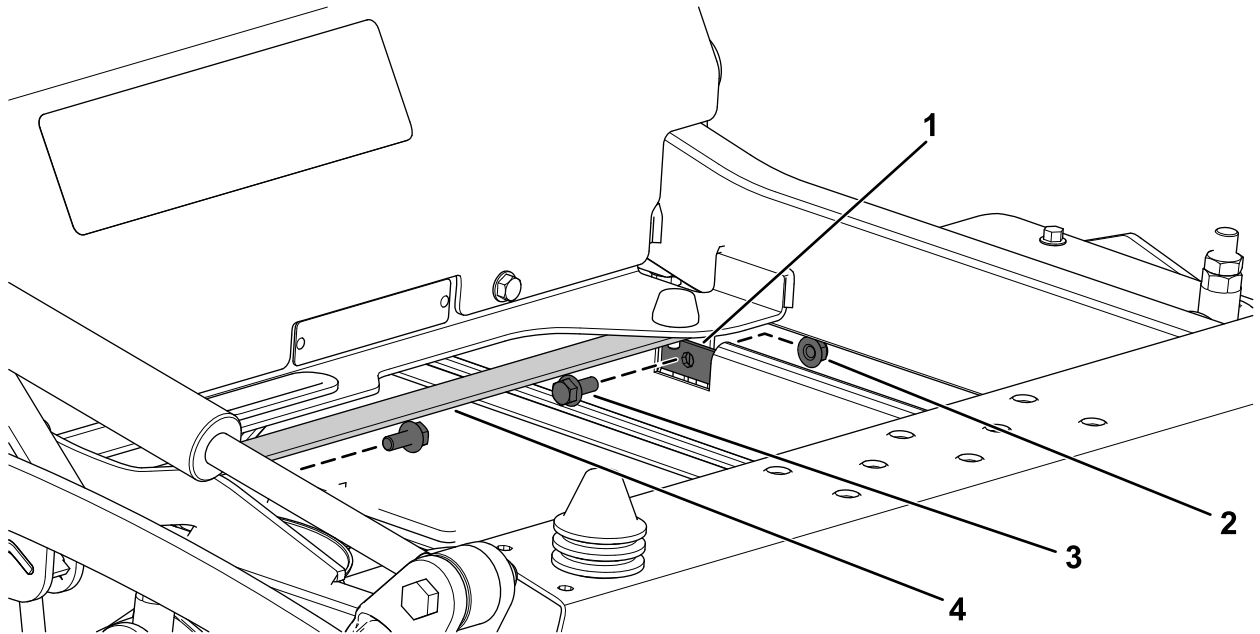


g342350

**Figure 22**

1. Cross-shaft support  
2. Previously removed locknut (1/2 inch)  
3. Front, upper support rod

10. Torque the 2 locknuts (1/2 inch) to 77 to 126 N·m (57 to 93 ft-lb).  
11. Secure the left, upper support rod and right, upper support rod to the brace bracket using 2 flange-head bolts (5/16 x 3/4 inch) and 2 flange nuts (5/16 inch) on each side (Figure 23).



g342353

**Figure 23**

1. Left, upper support rod  
2. Flange nut (5/16 inch)  
3. Flange-head bolt (5/16 x 3/4 inch)  
4. Brace bracket

# 8

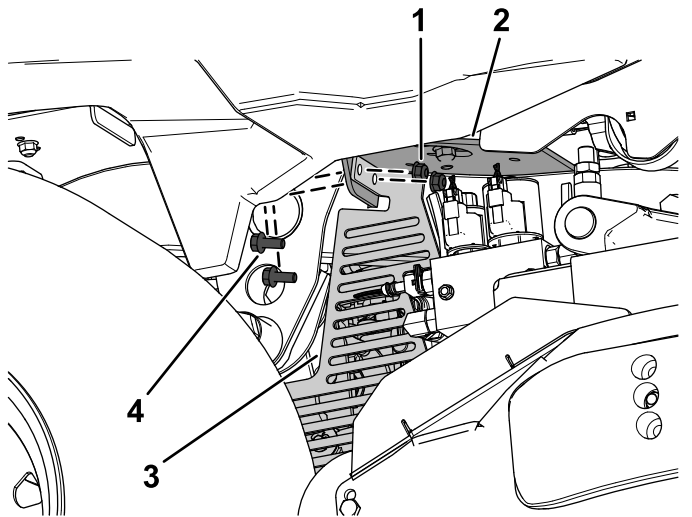
## Installing the Frame Guards

### Parts needed for this procedure:

1	Left frame guard
1	Right frame guard
4	Flange-head bolt (5/16 x 3/4 inch)
4	Flange nut (5/16 inch)

### Procedure

Secure the left frame guard and right frame guard to the frame brackets using 2 flange-head bolts (5/16 x 3/4 inch) and 2 flange nuts (5/16 inch) on each side (Figure 24).



g342237

**Figure 24**

Right side shown

- |                           |                                       |
|---------------------------|---------------------------------------|
| 1. Flange nut (5/16 inch) | 3. Right frame guard                  |
| 2. Right frame bracket    | 4. Flange-head bolt (5/16 x 3/4 inch) |

# 9

## Installing the CE Covers

### Parts needed for this procedure:

1	Left CE cover
1	Right CE cover

### Procedure

1. Tilt the operator's seat forward.
2. Remove the 4 flange nuts (3/8 inch) from the seat-support plate (Figure 25).  
Retain the 4 flange nuts (3/8 inch).

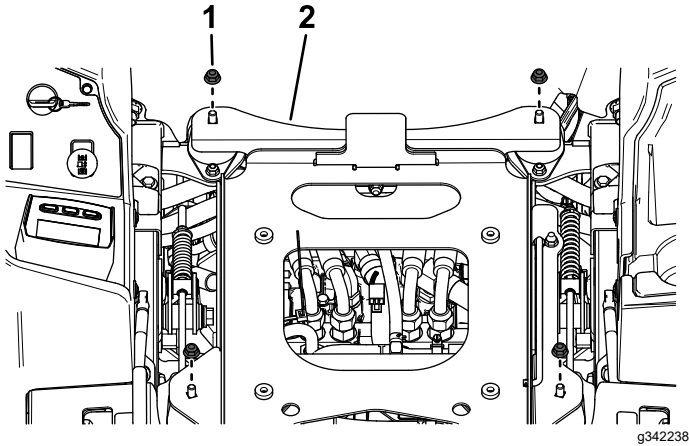


Figure 25

1. Flange nut (3/8 inch)
2. Seat-support plate

3. Secure the left CE cover and right CE cover to the seat-support plate using the previously removed 4 flange nuts (3/8 inch) as shown in Figure 26.

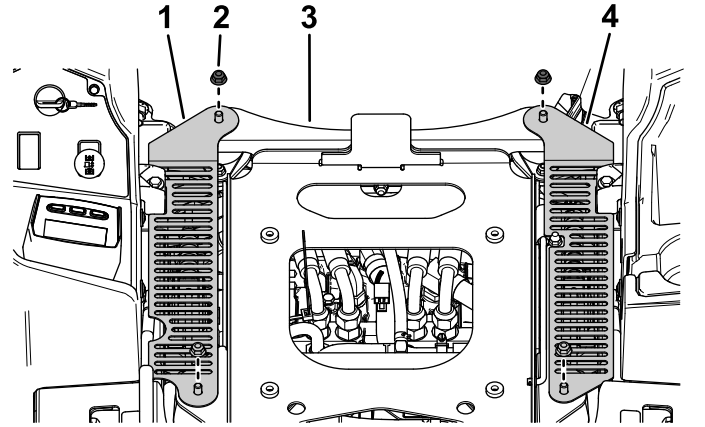


Figure 26

1. Right CE cover
2. Previously removed 4 flange nut (3/8 inch)
3. Seat-support plate
4. Left CE cover

# 10

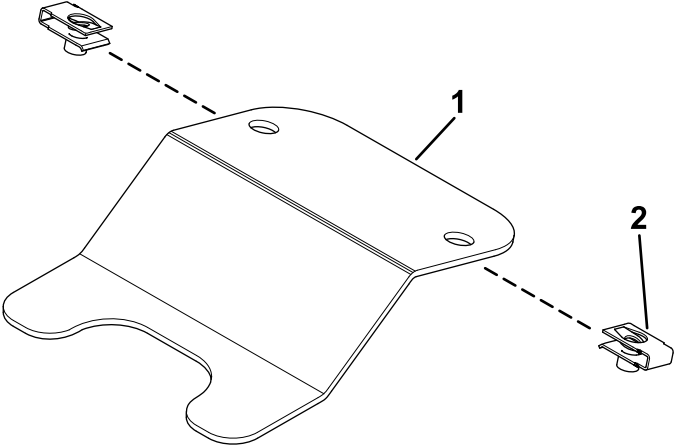
## Installing the Floor Pan

**Parts needed for this procedure:**

1	Captive adapter
2	Flange-head bolt (1/4 x 3/4 inch)
2	Flat washer
2	Clip
2	Push nut

### Procedure

1. Install 2 clips on to the captive adapter (Figure 27).



**Figure 27**

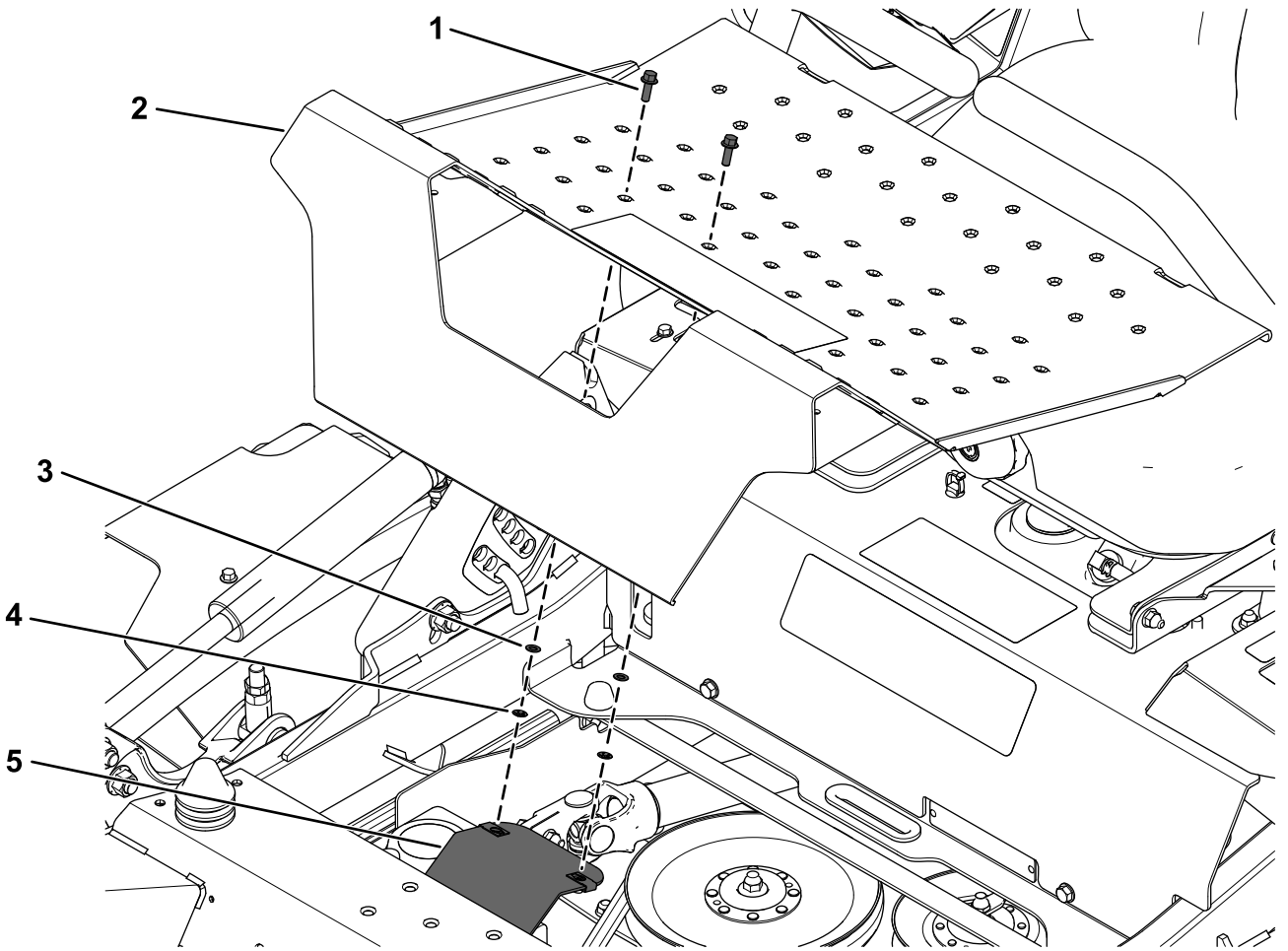
g342287

1. Captive adapter

2. Clip



- Secure the previously removed floor pan using the captive adapter, 2 flange-head bolts (1/4 x 3/4 inch), 2 flat washers, and 2 push nuts (**Figure 28**).



g342298

**Figure 28**

- |                                      |                    |
|--------------------------------------|--------------------|
| 1. Flange-head bolt (1/4 x 3/4 inch) | 4. Push nut        |
| 2. Floor pan                         | 5. Captive adapter |
| 3. Flat washer                       |                    |

# 11

## Applying the Decals

### Parts needed for this procedure:

1	Decal 133-5623
1	Decal 144-6905—60-inch decks with 25 HP Yanmar diesel engine only
1	Decal 144-6906—72-inch decks with 25 HP Yanmar diesel engine only
1	Decal 144-6907—60-inch decks with 37 HP Yanmar diesel engine only
	Decal 144-6908—72-inch decks with 37 HP Yanmar diesel engine only

### Procedure

Apply decals 133-5623 and 144-6905, 144-6906, 144-6907, or 144-6908 to the left side of the machine frame near the serial decal using the dimensions shown in [Figure 29](#).

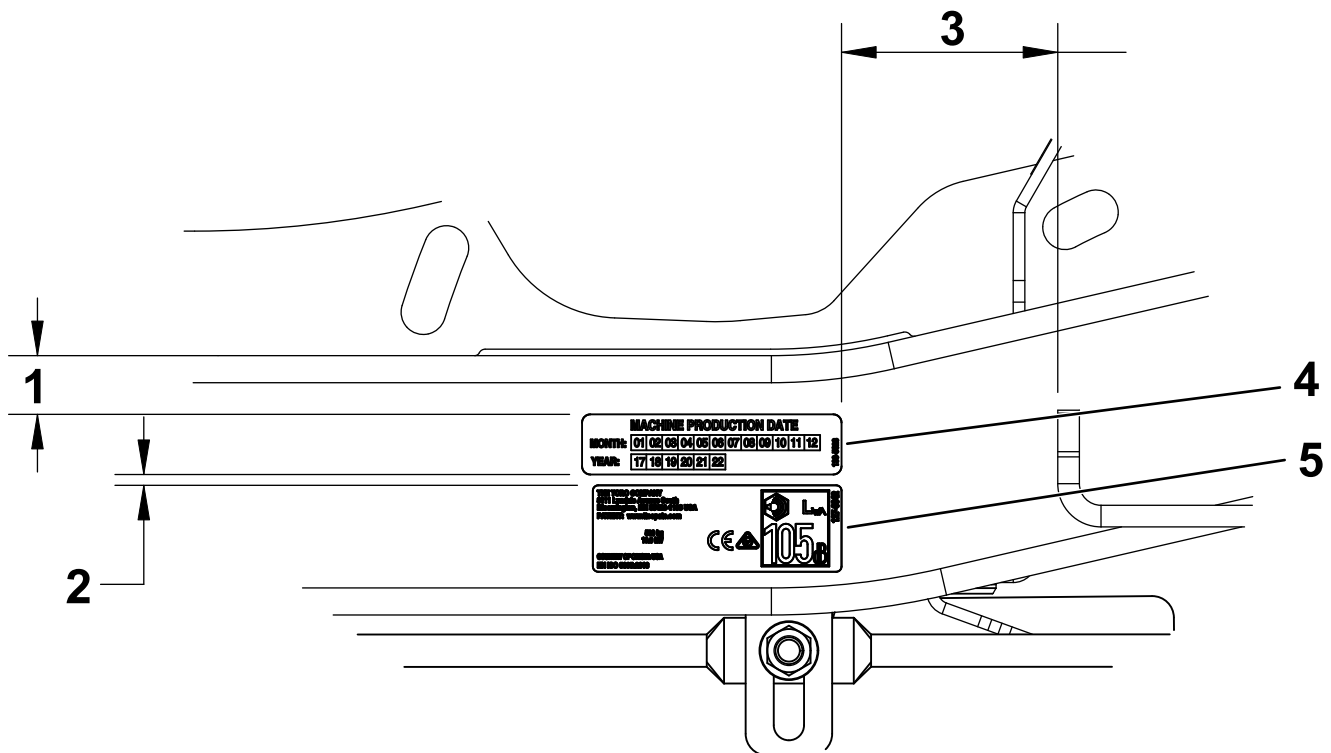


Figure 29

g342364

1. 14 to 21 mm (9/16 to 13/16 inch)
2. 3 mm (1/8 inch)
3. 63 mm (2-1/2 inches)
4. Decal 133-5623
5. Decal 144-6905, 144-6906, 144-6907, or 144-6908

**Notes:**



**Count on it.**