



Form No. 3443-673 Rev A

Count on it.

Parts Catalog

Spiker

Greensmaster® 3300/3400 Series TriFlex® Traction Unit

Model No. 04723—Serial No. 406000000 and Up



Ordering Replacement Parts

To order replacement parts, please supply the part number, the quantity, and the description of each part desired.

Understanding Reference Numbers

Each identified part in an illustration has a reference number. The reference number for a part also appears in the parts list, along with other information about the part.

This catalog uses two special reference number formats, one to indicate parts in a service assembly and another to indicate the quantity of a given part in an illustration.

Service Assembly Reference Numbers

Parts in service assemblies have reference numbers in the form a:b. The a represents the reference number of the entire service assembly and the b represents a sequential number unique to each part within the service assembly.

For example, a wheel assembly might be identified by reference number 6, the tire by 6:1, the valve by 6:2, and the wheel by 6:3. When you order the assembly identified by reference number 6, you receive all parts identified by reference numbers 6:1, 6:2, and 6:3. However, you may also order any part individually. Reference numbers of this type appear in illustration and in parts lists.

Reference Numbers Indicating Quantity

In an illustration, if a reference number indicates more than one part, the reference number has the form nX y. The n represents the quantity of the part, the X is the multiplication symbol, and the y represents the reference number.

For example, in an illustration, the reference number 2X 37 means that two of the parts identified by reference number 37 are indicated.

Contents

Frame Assembly..... 4

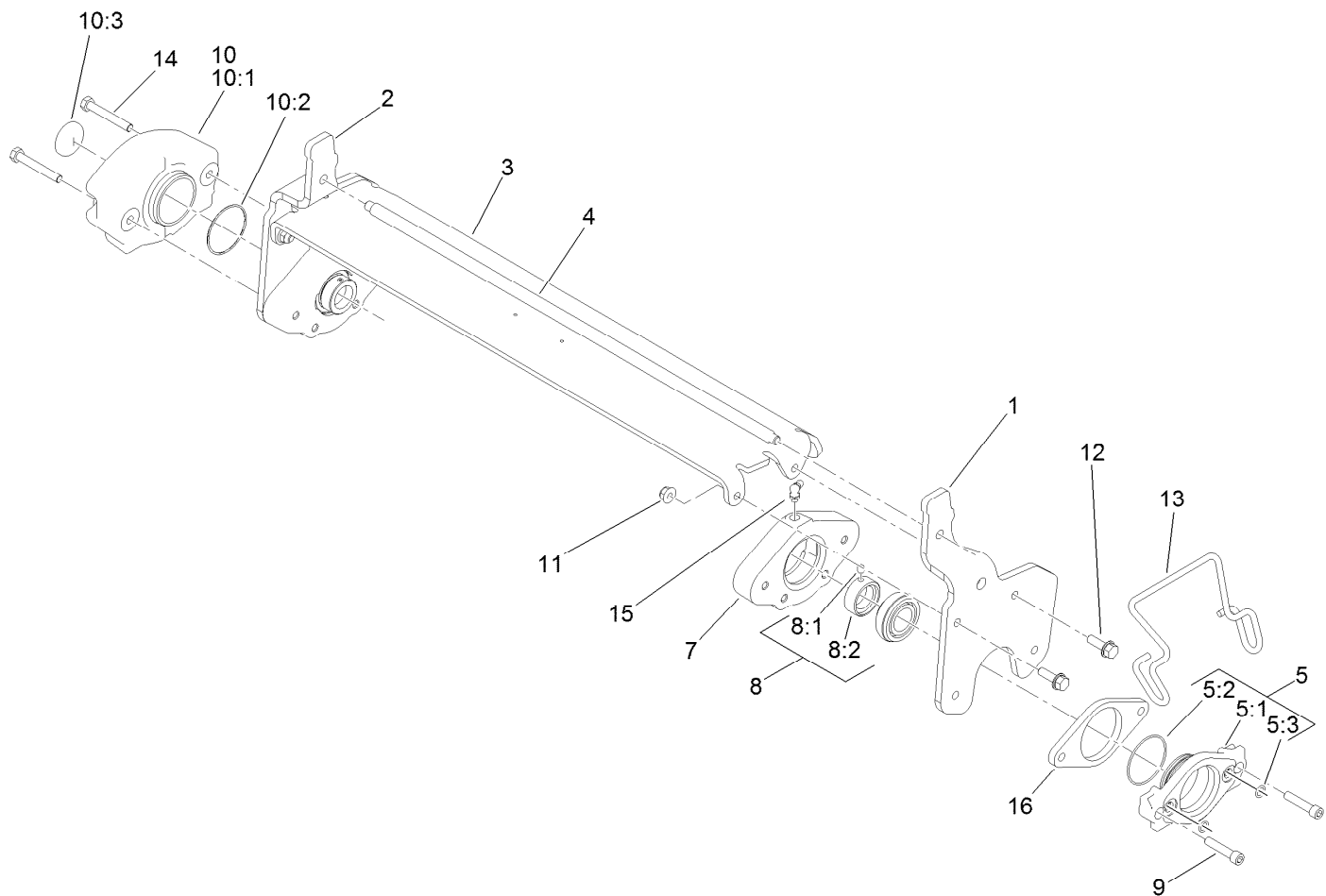
Spiker and Steel Roller Assembly 5

Spiker Assembly No. 121-2245 6

Steel Roller Assembly No. 107-3509 7

Roller Rebuild Kit Assembly No. 140-5552 8

Attachments and Accessories 9

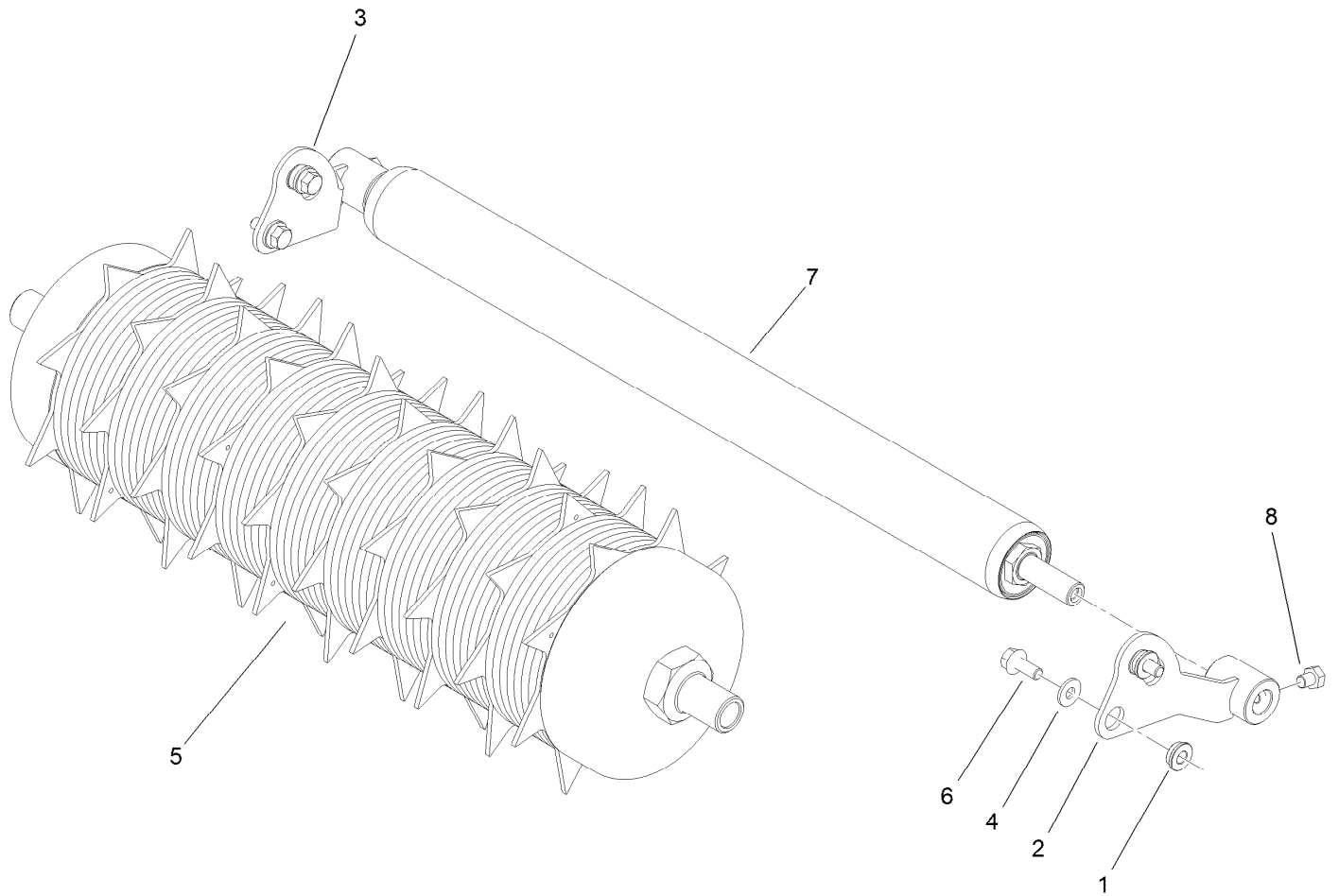


Frame Assembly

Ref.	Part Number	Qty.	Description
1	131-2033-01	1	Arm-Pitch, LH
2	131-2034-01	1	Arm-Pitch, RH
3	121-2251-01	1	Shield-Top
4	121-2246	1	Brace-Frame
5	115-5227	1	Motor Adapter ASM
5:1	115-3294	1	Adaptor-Motor
5:2	360-0398	1	O-Ring
5:3	237-22	2	O-Ring
7	121-2248	2	Housing-Bearing
8	94-3405	2	Bearing-Ball
8:1	3245-35	1	Screw-Set, HSH
8:2	251-77	1	Collar-Lock, Bearing

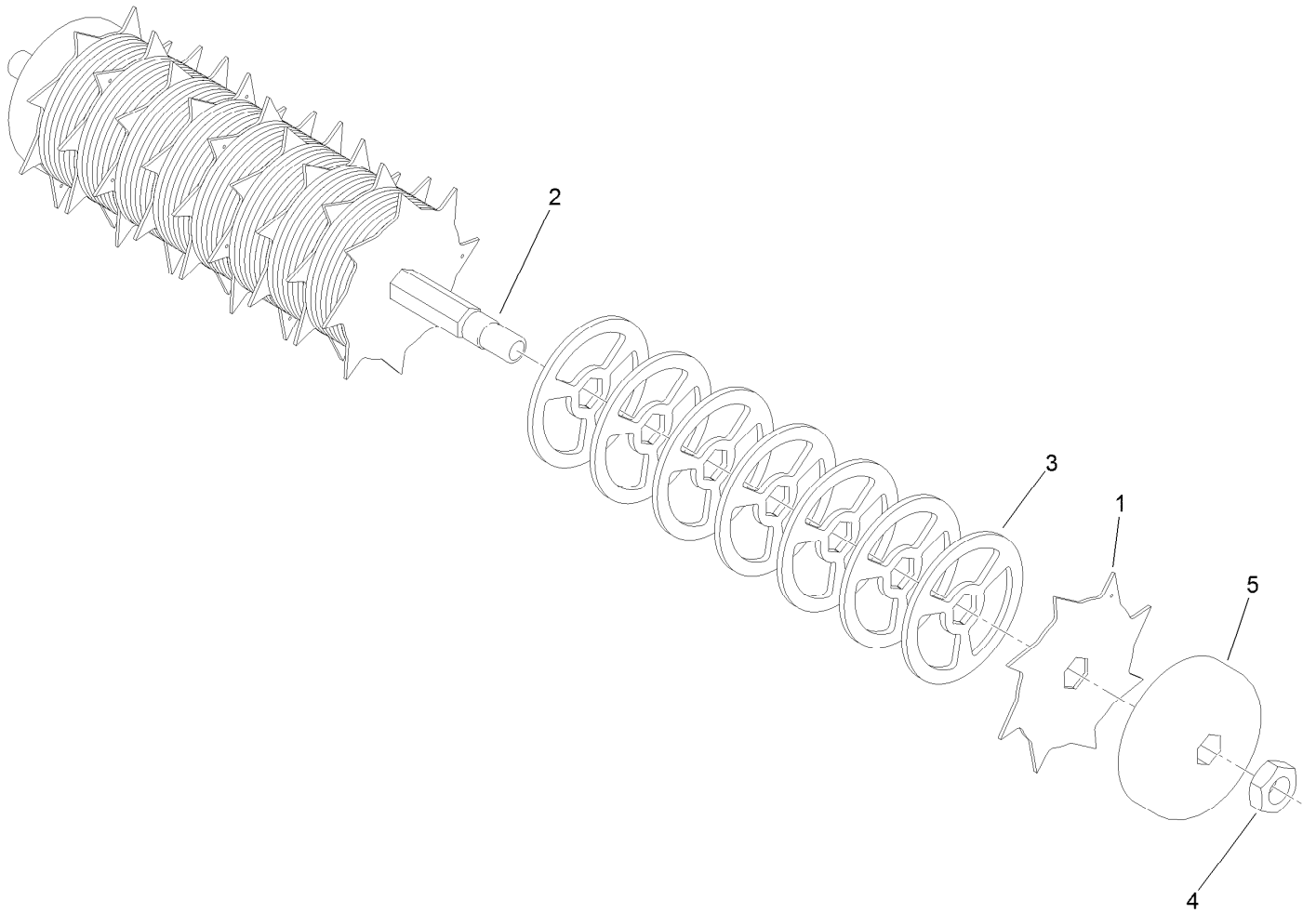
Ref.	Part Number	Qty.	Description
9	3274-83	2	Screw-HSH
10	115-3340	1	Weight ASM
10:1		1	Weight-Reel ●
10:2	360-0398	1	O-Ring
10:3	121-4609	1	Plug-Expansion
11	104-8300	4	Nut-HF, NI
12	3234-29	4	Screw-HHF
13	117-6706	1	Clamp-Motor
14	322-11	2	Screw-HH
15	302-33	2	Fitting-Grease
16	121-5869-03	1	Spacer-Mount

● Not serviced separately



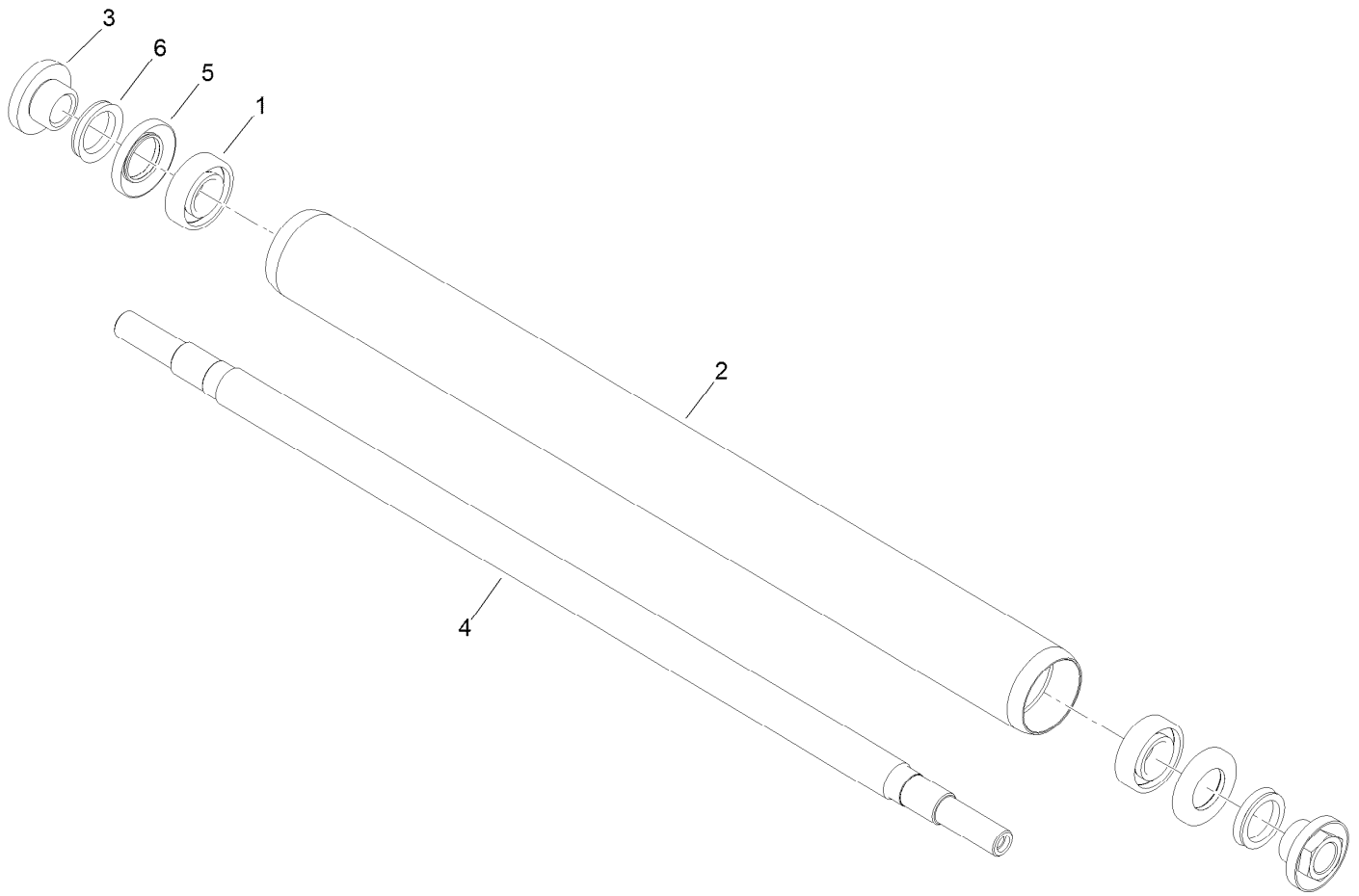
Spiker and Steel Roller Assembly

Ref.	Part Number	Qty.	Description
1	121-5880	4	Bushing
2	121-5852-03	1	Arm-Roller, LH
3	121-5855-03	1	Arm-Roller, RH
4	3256-2	4	Washer-Flat
5	121-2245	1	Spiker ASM
6	3234-47	4	Screw-HHF
7	107-3509	1	Steel Roller ASM
8	322-26	4	Screw-HH



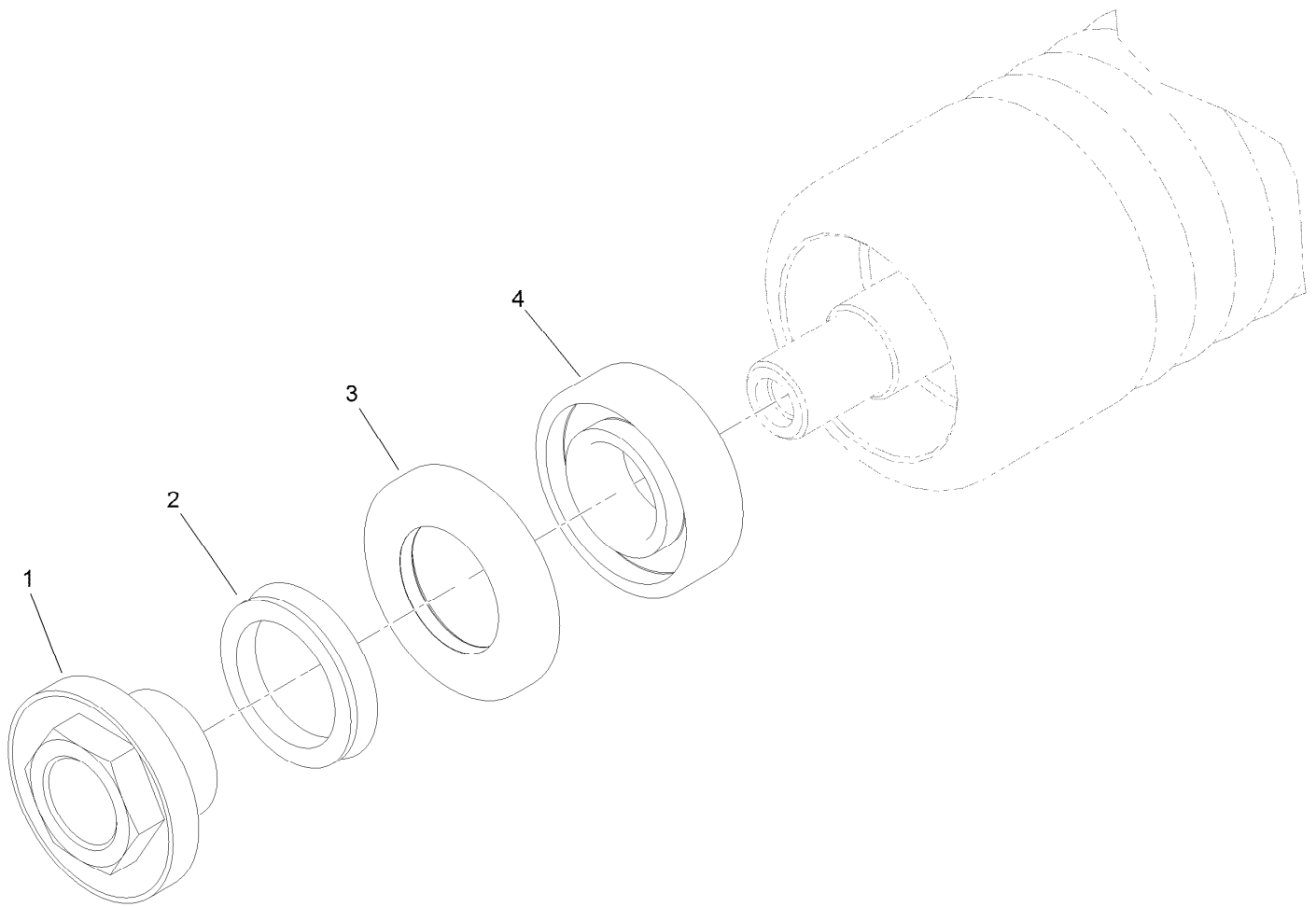
Spiker Assembly No. 121-2245

<i>Ref.</i>	<i>Part Number</i>	<i>Qty.</i>	<i>Description</i>
1	121-2241	10	Blade
2	99-1611	1	Shaft
3	121-5879-03	63	Spacer-5.75 Diameter
4	67-5840	2	Nut-Jam
5	121-5888-03	2	Cap-End



Steel Roller Assembly No. 107-3509

<i>Ref.</i>	<i>Part Number</i>	<i>Qty.</i>	<i>Description</i>
1	251-347	2	Bearing-Ball
2	107-3507	1	Roller-Steel
3	108-3151	2	Nut-Lock, Bearing (Service)
4	119-4090	1	Shaft-Roller
5	106-6941	2	Seal
6	106-6942	2	V-Ring



Roller Rebuild Kit Assembly No. 140-5552

<i>Ref.</i>	<i>Part Number</i>	<i>Qty.</i>	<i>Description</i>
1	108-3151	2	Nut-Lock, Bearing (Service)
2	106-6942	2	V-Ring
3	106-6941	2	Seal
4	251-347	2	Bearing-Ball

Attachments and Accessories

For 04723 Spiker Greensmaster 3300/3400 Series TriFlex Traction Unit

Product Name	Model/Part
GR Roller Rebuild Kit.....	140-5552

Notes:

Notes:



Count on it.