



Form No. 3443-609 Rev A

Count on it.

Operator's Manual

48in Snowthrower

GrandStand® Multi Force® Mower

Model No. 78598—Serial No. 40000000 and Up



⚠ WARNING

**CALIFORNIA
Proposition 65 Warning**

Use of this product may cause exposure to chemicals known to the State of California to cause cancer, birth defects, or other reproductive harm.

Model No. _____

Serial No. _____

This manual identifies potential hazards and has safety messages identified by the safety-alert symbol (Figure 2), which signals a hazard that may cause serious injury or death if you do not follow the recommended precautions.



Figure 2

g000502

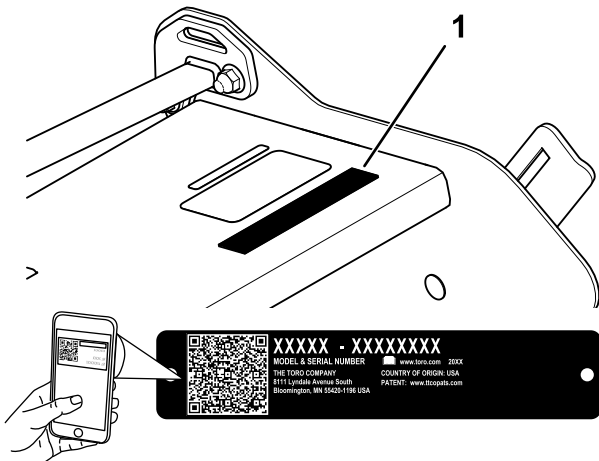
1. Safety-alert symbol

Introduction

This attachment is used to remove snow from paved surfaces, such as driveways and sidewalks, and other surfaces for traffic on residential or commercial properties. Read this information carefully to learn how to operate and maintain your product properly and to avoid injury and product damage. You are responsible for operating the product properly and safely.

Visit www.Toro.com for product safety and operation training materials, accessory information, help finding a dealer, or to register your product.

Whenever you need service, genuine Toro parts, or additional information, contact an Authorized Service Dealer or Toro Customer Service and have the model and serial numbers of your product ready. Figure 1 identifies the location of the model and serial numbers on the product. Write the numbers in the space provided.



g328946

Figure 1

1. Model and serial number plate

Write the product model and serial numbers in the space below:

Contents

Safety	3
General Safety	3
Attachment Safety	4
Safety and Instructional Decals	4
Setup	5
1 Preparing the Machine	5
2 Removing the Mower Deck	5
3 Positioning the Casters	6
4 Installing the Lock Bracket	6
5 Installing the Snowthrower	6
6 Installing the High Flow Case Drain Kit.....	9
7 Connecting the Hoses.....	9
8 Setting the Snowthrower Height.....	10
Product Overview	11
Controls	12
Operation	12
Operating the Snowthrower	12
Clearing a Clogged Snowthrower	13
Adjusting the Drift Breakers	13
Transporting the Machine	13
Preventing Freeze-up after Use	15
Operating Tips	15
Maintenance	16
Maintenance Safety	16
Adjusting the Skids	16
Replacing the Trip Edges.....	17
Checking the Auger-Gearbox-Oil Level.....	17
Checking the Belt	18
Replacing the Belt	18
Adjusting the Drive Chain	18
Storage	19

Safety

General Safety

This product is capable of amputating hands and feet and of throwing objects. Always follow all safety instructions to avoid serious personal injury.

- Read and understand the contents of this *Operator's Manual* before starting the engine.
- Wear appropriate clothing including gloves, eye protection, long pants, substantial slip-resistant footwear, and hearing protection. Tie back long hair and do not wear loose clothing or loose jewelry.
- Do not put your hands or feet near moving components of the machine.
- Do not operate the machine without all guards and other safety protective devices in place and functioning properly on the machine.
- Keep clear of the discharge opening.
- Keep bystanders and children out of the operating area. Do not allow children to operate the machine. Allow only people who are responsible, trained, familiar with the instructions, and physically capable to operate the machine.
- Stop the machine, shut off the engine, and remove the ignition key before servicing, fueling, or unclogging the machine.

Improperly using or maintaining this machine can result in injury. To reduce the potential for injury, comply with these safety instructions and always pay attention to the safety-alert symbol **▲**, which means Caution, Warning, or Danger—personal safety instruction. Failure to comply with these instructions may result in personal injury or death.

Attachment Safety

- Thoroughly inspect the area where you will use the attachment, and remove all doormats, sleds, boards, wires, and other foreign objects.
- Shut off the engine before unclogging the attachment and always use a stick.
- Never direct the discharge toward people or areas where property damage can occur.
- When not actively clearing snow, disengage power to the auger.
- Exercise extreme caution when operating the machine on or crossing gravel drives, walks, or roads. Stay alert for hidden hazards or traffic.
- Do not overload the attachment capacity by attempting to clear snow at too fast a rate.
- Never operate the machine at high transport speeds on slippery surfaces.
- Do not operate the machine at a speed that could cause injury to you and/or damage to the machine if it were to hit an unseen, immovable object.
- Raise the attachment when transporting it.
- Run the attachment a few minutes after throwing snow to prevent freeze-up of the collector and impeller.

Safety and Instructional Decals



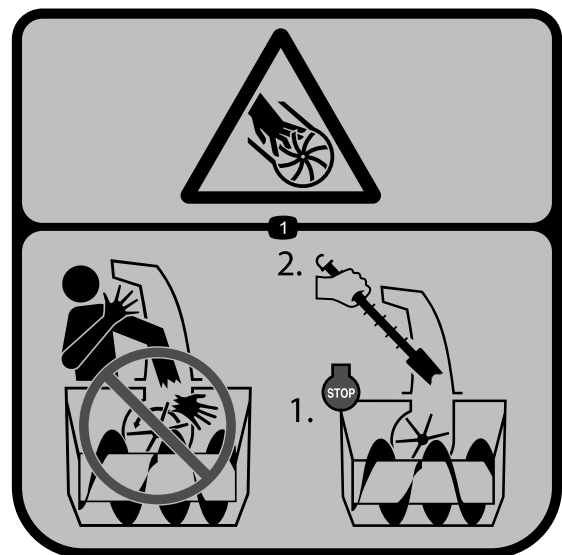
Safety decals and instructions are easily visible to the operator and are located near any area of potential danger. Replace any decal that is damaged or missing.



121-6817

decal121-6817

1. Cutting/dismemberment hazard of hand or foot, impeller and auger—keep bystanders away.



121-6847

decal121-6847

1. Cutting/dismemberment hazard of the fingers or hand, impeller—do not place your hand in the chute; shut off the engine before using the tool to clear the chute.

WARNING: Cancer and Reproductive Harm - www.P65Warnings.ca.gov.
For more information, please visit www.ttcocAProp65.com

133-8061

133-8061

decal133-8061

Setup

Loose Parts

Use the chart below to verify that all parts have been shipped.

Procedure	Description	Qty.	Use
1	No parts required	–	Prepare the machine.
2	No parts required	–	Remove the mower deck.
3	No parts required	–	Position the casters.
4	Lock bracket assembly	1	Install the lock bracket.
5	Snowthrower attachment Stop block Chute-cable bracket Carriage bolt (3/8 x 1-1/2 inches) Carriage bolt (5/16 x 4 inches) Nut (3/8 inch) Nut (5/16 inch) Washer	1 2 1 2 1 2 1 2	Install the snowthrower.
6	High Flow Case Drain Kit	1	Install the High Flow Case Drain Kit
7	No parts required	–	Connect the hoses.
8	No parts required	–	Set the snowthrower height.

Install the following (sold separately on your machine before you install the snowthrower):

- Float Kit (optional)
- High Flow Hydraulic Kit (required)
- Low Flow Hydraulic Kit (required)
- Pneumatic casters (required)
- Snow Tires (recommended)
- Wheel Weight Kit (required)

A Lift Cylinder Lock Kit (Part No. 137-4106) is available to secure the A-frame when you raise it for setup or maintenance; contact your Authorized Toro Dealer.

Reverse the procedures to remove the snowthrower after installation.

1

Preparing the Machine

No Parts Required

Procedure

1. Park the machine on a level surface.
2. Disengage the PTO, engage the parking brake, and move the motion-control levers outward to the NEUTRAL-LOCK position.
3. Raise the A-frame and support it using blocks or a cylinder lock.
4. Shut off the engine and remove the key.

2

Removing the Mower Deck

No Parts Required

Procedure

Refer to the Removing the Deck procedure in the *Operator's Manual* for your machine. Retain the fasteners securing the strut bracket to the machine.

3

Positioning the Casters

No Parts Required

Procedure

Remove the nut and bolt from each caster, move the caster to the middle position, and install the nut and bolt (Figure 3). Torque to 91 to 113 N·m (67 to 83 ft-lb).

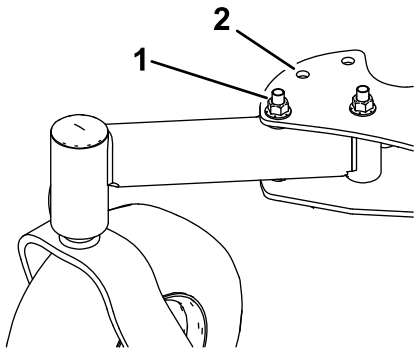


Figure 3

g210119

- 1. Nut and bolt
- 2. Middle position

4

Installing the Lock Bracket

Parts needed for this procedure:

1	Lock bracket assembly
---	-----------------------

Procedure

1. Remove the 4 carriage bolts (3/8 x 2-1/2 inches), 4 nuts (3/8 inch), and the existing lock bracket (Figure 4).

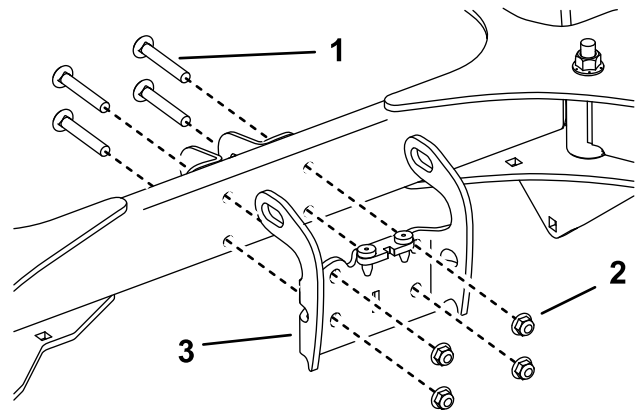


Figure 4

g210329

- 1. Carriage bolt (3/8 x 2-1/2 inches)
- 2. Nut
- 3. Lock bracket

2. Use the fasteners that you just removed to install the snowthrower lock bracket (Figure 5). Torque to 37 to 45 N·m (27 to 33 ft-lb).

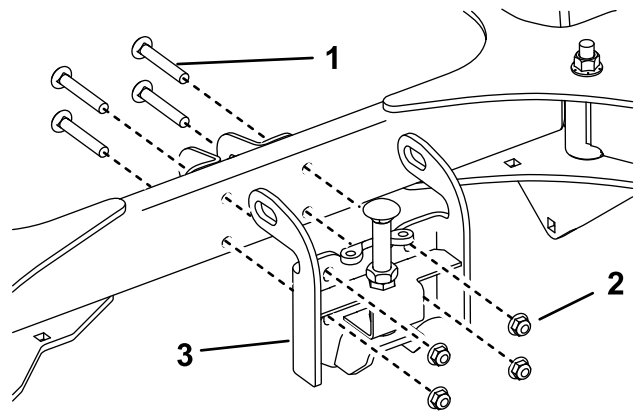


Figure 5

g210328

- 1. Carriage bolt (3/8 x 2-1/2 inches)
- 2. Nut
- 3. Snowthrower lock bracket

5

Installing the Snowthrower

Parts needed for this procedure:

1	Snowthrower attachment
2	Stop block
1	Chute-cable bracket
2	Carriage bolt (3/8 x 1-1/2 inches)
1	Carriage bolt (5/16 x 4 inches)
2	Nut (3/8 inch)
1	Nut (5/16 inch)
2	Washer

Procedure

1. Install the attachment tube to the accessory frame receiver. Secure it using the hitch pin and hairpin cotter in the front hole of the frame.

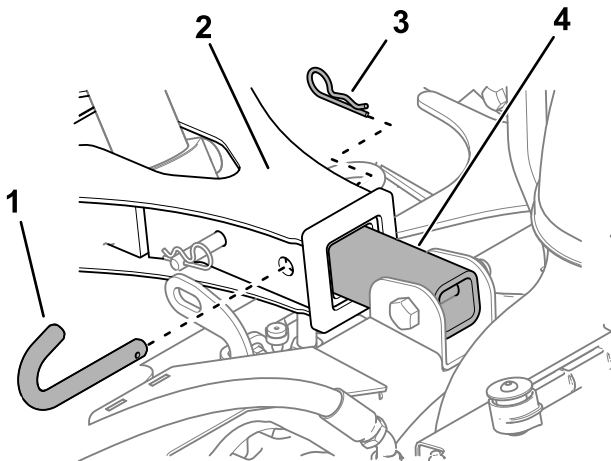
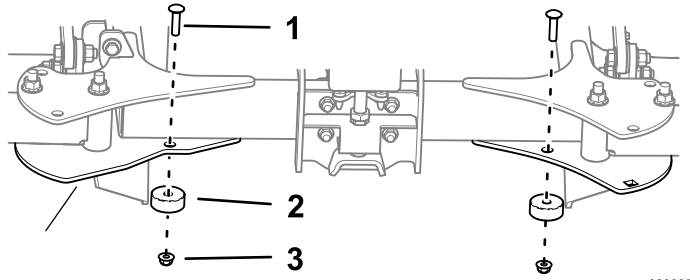


Figure 6

g329038

- | | |
|--------------------|--------------------|
| 1. Hitch pin | 3. Hairpin cotter |
| 2. Accessory frame | 4. Attachment tube |

2. Install the 2 stop blocks.

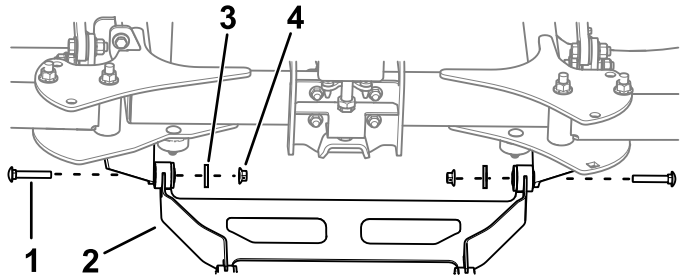


g329039

Figure 7

- | | |
|---|---------------------|
| 1. Carriage bolt—3/8 x 1-1/2 inches (2) | 3. Nut—3/8 inch (2) |
| 2. Stop block (2) | |

3. Secure the strut assembly to the frame using the fasteners removed from the mower strut bracket and 2 washers.

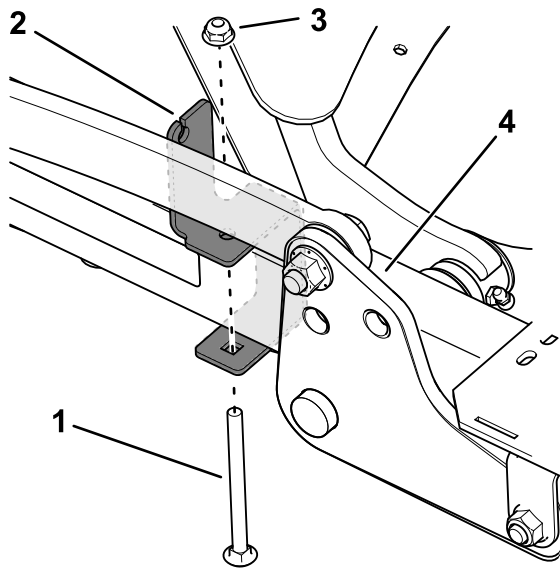


g340719

Figure 8

- | | |
|---|---------------------|
| 1. Carriage bolt—3/8 x 2-1/4 inches (2) | 3. Washer (2) |
| 2. Strut assembly | 4. Nut—3/8 inch (2) |

- Loosely install the chute-cable bracket on the frame near lift-arm assembly.

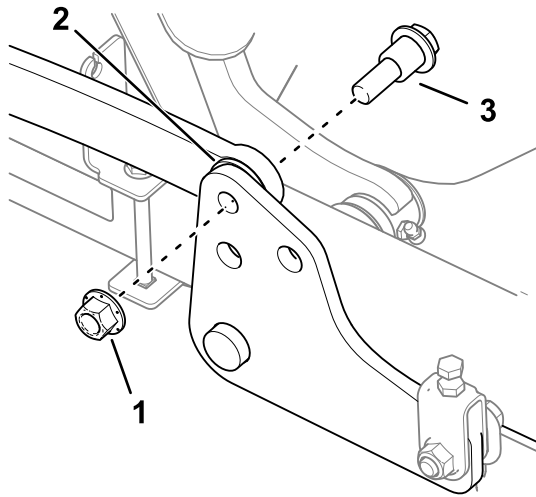


g329113

Figure 9

- | | |
|------------------------------------|----------------------|
| 1. Carriage bolt (5/16 x 4 inches) | 3. Nut (5/16 inch) |
| 2. Chute-cable bracket | 4. Lift-arm assembly |

- Remove the shoulder bolt, washer, and nut securing the linkage to the lift-arm assembly. Discard the washer.

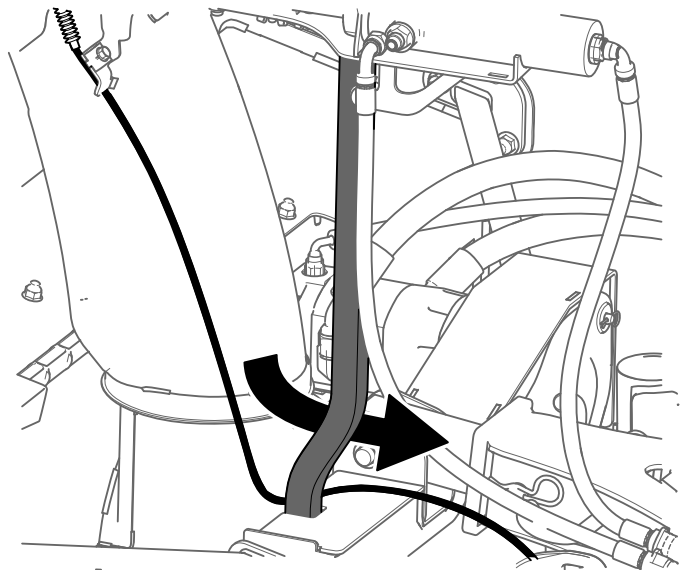


g330428

Figure 10

- | | |
|-----------|------------------|
| 1. Nut | 3. Shoulder bolt |
| 2. Washer | |

- Route the chute cable between the chute and the chute post.

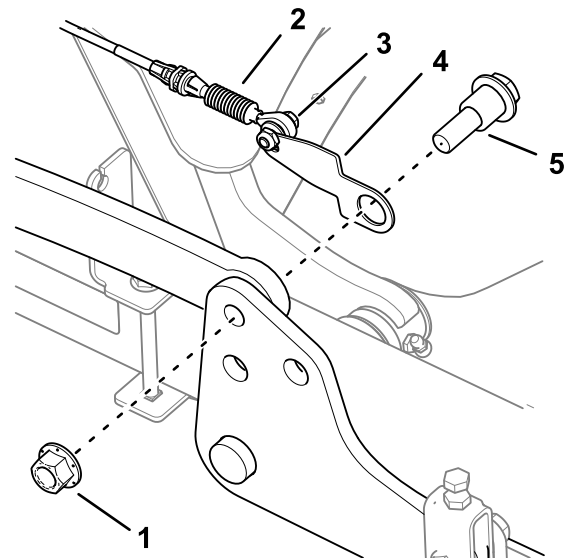


g334147

Figure 11

- Use the shoulder bolt and nut to install the chute cable to the lift-arm assembly. Torque the bolt 98 to 119 N·m (72 to 88 ft·lb).

Note: When you remove the snowthrower from the machine, remove the fasteners securing the cable to the cable plate shown in [Figure 13](#). Do not remove the cable plate from the linkage and lift-arm assembly.



g329114

Figure 12

- | | |
|--|------------------|
| 1. Nut | 4. Cable plate |
| 2. Chute cable | 5. Shoulder bolt |
| 3. Remove these fasteners when removing the snowthrower. | |

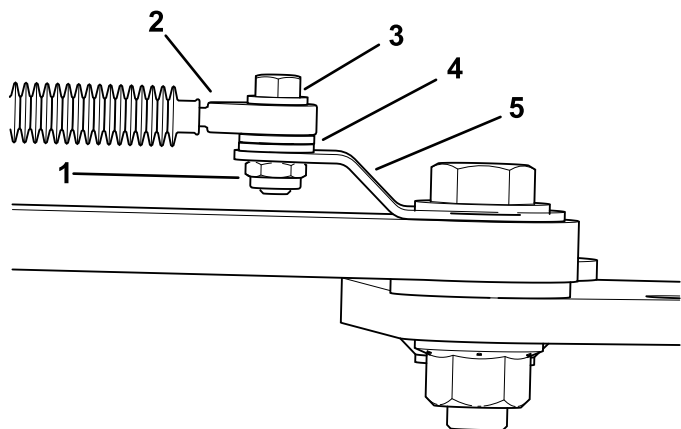


Figure 13

g334747

- 1. Nut
- 2. Cable
- 3. Shoulder bolt
- 4. Washer (2)
- 5. Cable plate

8. Secure the cable in the chute-cable bracket.

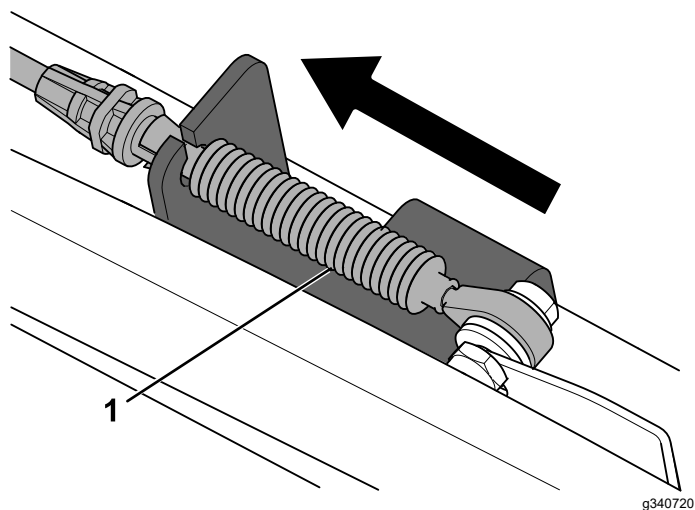


Figure 14

g340720

1. Cable is tight when height-of-cut is in transport position.

9. Raise the height-of-cut lever and lock it into the highest (transport) position.

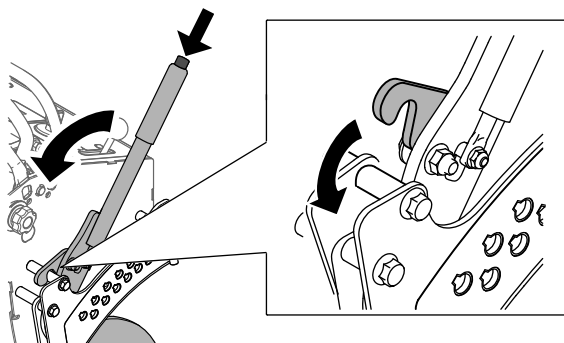


Figure 15

g340768

- 10. Slide the bracket forward so that the cable is tight (Figure 14).
- 11. Tighten the fasteners securing the bracket.

6

Installing the High Flow Case Drain Kit

Parts needed for this procedure:

1	High Flow Case Drain Kit
---	--------------------------

Procedure

Refer to the *Installation Instructions* for the kit.

7

Connecting the Hoses

No Parts Required

Procedure

- 1. Connect the hoses from the snowthrower cylinder to the hoses from the low flow assembly.

8

Setting the Snowthrower Height

No Parts Required

Procedure

1. Start the machine and lower the snowthrower on cardboard so that there is a small gap between the scraper edge and the ground.
2. Shut off the machine and remove the key.
3. Loosen the nuts that secure both skids to the auger sides until the skids slide up and down easily.

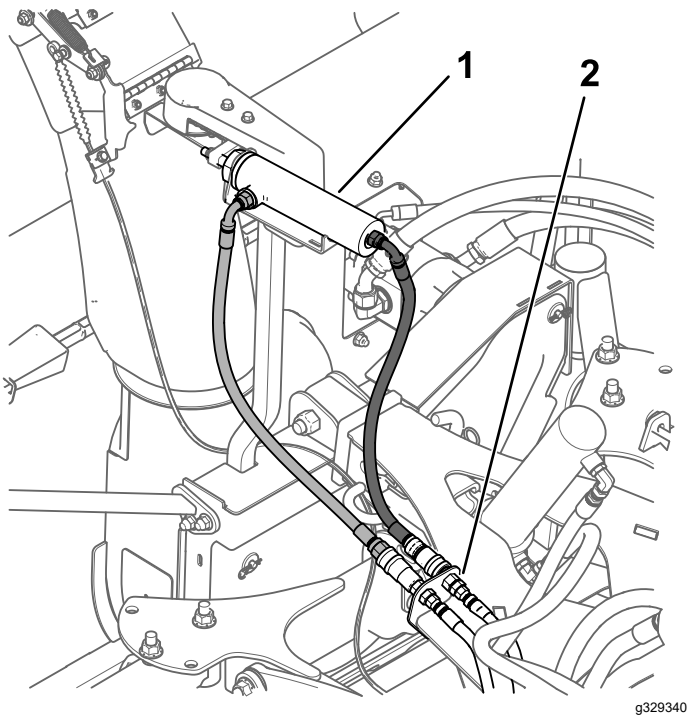


Figure 16

g329340

1. Snowthrower cylinder
2. Low-flow assembly hoses

2. Connect the hoses from the hydraulic pump to the high flow assembly.

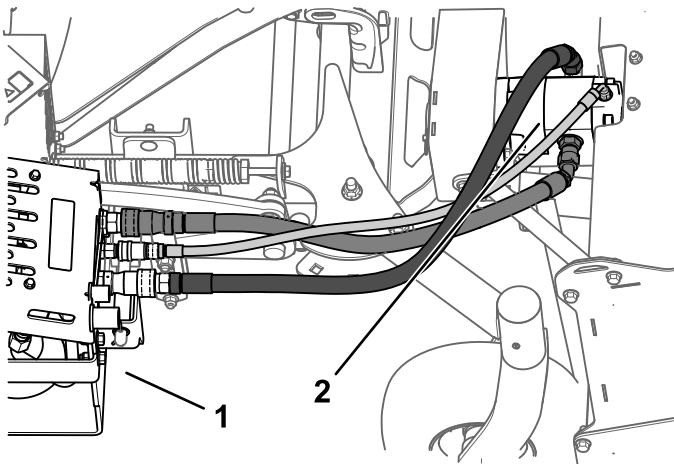


Figure 17

g329341

1. High-flow assembly
2. Hydraulic pump

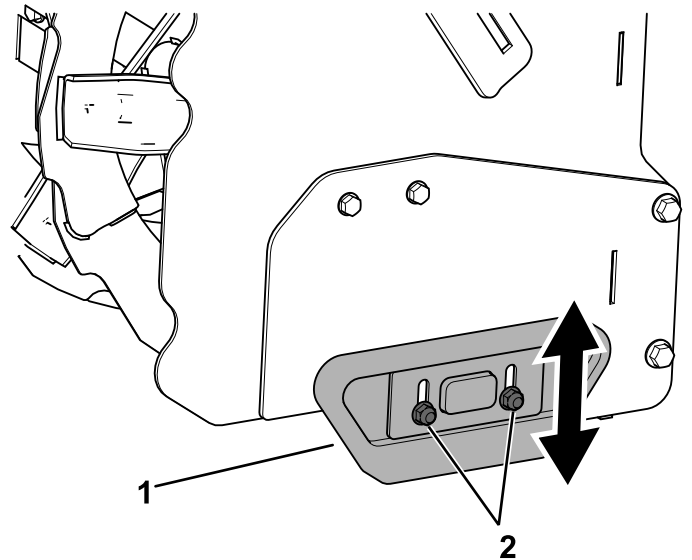


Figure 18

g309343

1. Skid
2. Nut (2)

4. Move the skids down until they are even with the ground.
5. Adjust the stop bolt as follows:
 - A. Support the A-frame using blocks or a cylinder lock.
 - B. Loosen the jam nut.

Product Overview

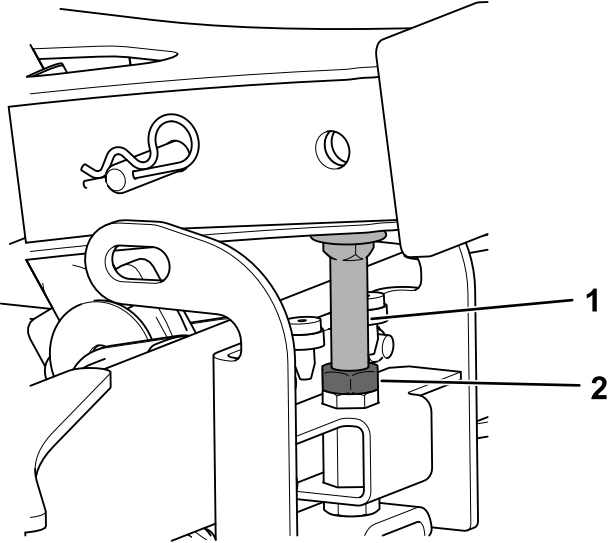


Figure 19

g330392

- 1. Stop bolt
- 2. Jam nut

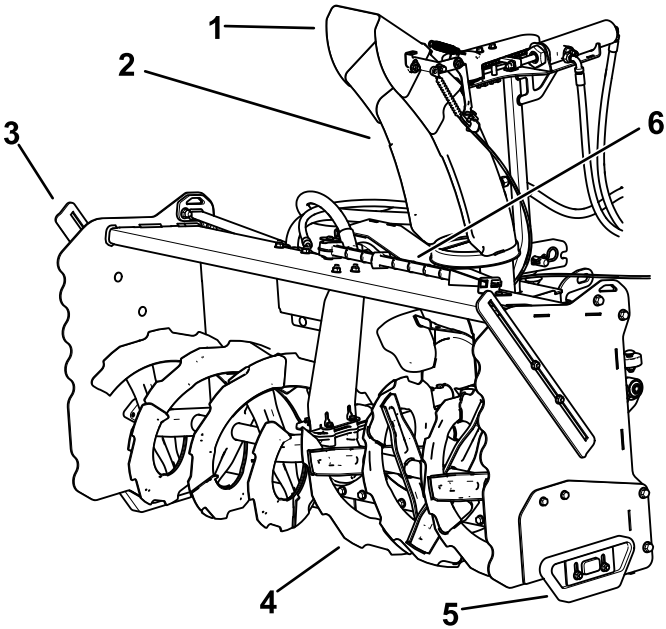


Figure 20

g309294

- 1. Chute deflector
- 2. Discharge chute
- 3. Drift breaker (2)
- 4. Auger
- 5. Skid (2)
- 6. Snow-cleanout tool

C. Adjust the stop bolt until it contacts the A-frame.

Note: This prevents the hydraulics from applying force on the skids and reduces wear.

D. Tighten the jam nut.

Controls

Use the switches from the Low Flow Hydraulic Kit (Figure 21) and the height-of-cut lever to operate the snowthrower.

Low Flow Hydraulic Kit Switches

- Move the left switch up or down to raise or lower the snowthrower.
- Move the right switch left or right to angle the discharge chute.

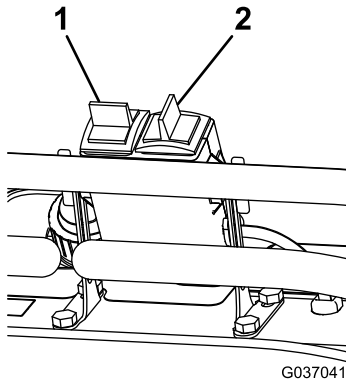


Figure 21

1. Raise or lower the snowthrower
2. Angle the discharge chute left or right.

Power-Takeoff Switch (PTO)

Use the power-takeoff switch (PTO) to start and stop the attachment.

Height-of-Cut Lever

Use the height-of-cut lever to raise and lower the snowthrower deflector.

Operation

Operating the Snowthrower

Important: Raise the snowthrower when transporting it.

1. Start the machine.
2. Move the throttle lever midway between the FAST and SLOW positions.

Note: In cold conditions, the traction unit engine may need time to warm up prior to engaging the attachment.

3. Engage the PTO switch to start the snowthrower auger.
4. Move the throttle lever to the FAST position before clearing snow.
5. Disengage the PTO switch or release the motion-control levers to stop the snowthrower auger.

Note: The auger should spin counterclockwise when viewed from the left side from the operating position (Figure 22). If the auger spins in the wrong direction, switch the couplers on the hydraulic hoses connected to the High Flow Kit.

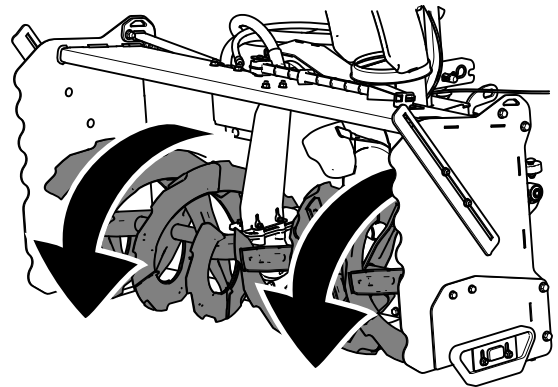


Figure 22

Clearing a Clogged Snowthrower

⚠ WARNING

If the auger/impeller is running but there is no snow coming out of the discharge chute, the discharge chute may be clogged.

Never use your hands to clear a clogged discharge chute. This could result in personal injury.

Note: If an object is lodged in the auger, reverse the hydraulic flow. If this does not dislodge the object, continue as follows.

1. Park the machine on a level surface, disengage the PTO, and engage the parking brake.
2. Shut off the engine, remove the key, and wait for all moving parts to stop before leaving the operating position.
3. Disconnect the hydraulic hoses.
4. Use a stick to clear the snowthrower.
5. Connect the hydraulic hoses before resuming operation.

Adjusting the Drift Breakers

1. Park the machine on a level surface, disengage the PTO, and engage the parking brake.
2. Shut off the engine, remove the key, and wait for all moving parts to stop before leaving the operating position.
3. Loosen the 2 nuts on each drift breaker and adjust the breaker as necessary (Figure 23).
4. Tighten the nuts.

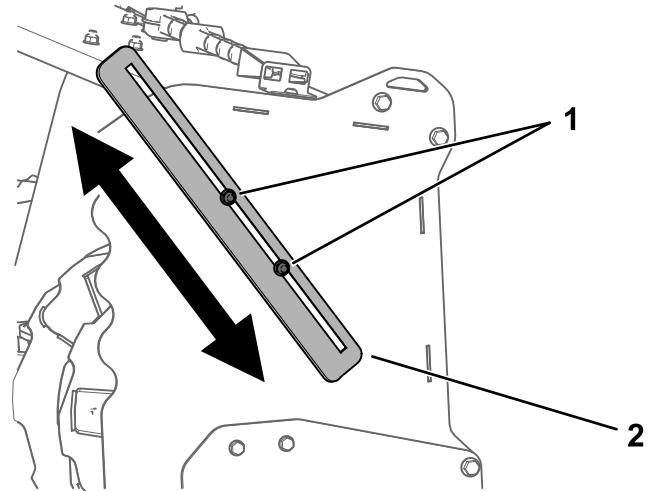


Figure 23

g309342

1. Nut

2. Drift breaker

Transporting the Machine

Use a heavy-duty trailer or truck to transport the machine. Use a full-width ramp. Ensure that the trailer or truck has all the necessary brakes, lighting, and marking as required by law. Please carefully read all the safety instructions. Knowing this information could help you or bystanders avoid injury. Refer to your local ordinances for trailer and tie-down requirements.

⚠ WARNING

Driving on the street or roadway without turn signals, lights, reflective markings, or a slow-moving-vehicle emblem is dangerous and can lead to accidents, causing personal injury.

Do not drive the machine on a public street or roadway.

Selecting a Trailer

⚠ WARNING

Loading a machine onto a trailer or truck increases the possibility of tip-over and could cause serious injury or death (Figure 24).

- Use only a full-width ramp; do not use individual ramps for each side of the machine.
- Ensure that the length of ramp is at least 4 times as long as the height of the trailer or truck bed to the ground.

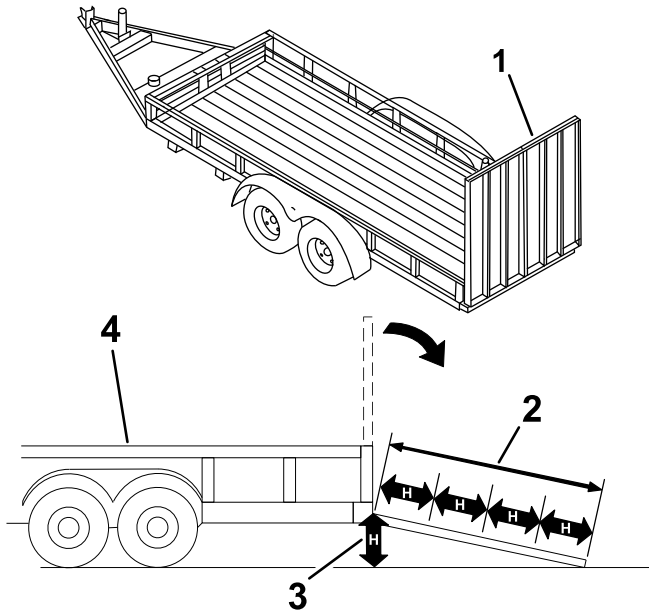


Figure 24

g229507

- | | |
|---|---|
| 1. Full-width ramp in stowed position | 3. H=height of the trailer or truck bed to the ground |
| 2. Ramp is at least 4 times as long as the height of the trailer or truck bed to the ground | 4. Trailer |

Loading the Machine

⚠ WARNING

Loading a machine onto a trailer or truck increases the possibility of tip-over and could cause serious injury or death.

- Use extreme caution when operating a machine on a ramp.
- Load and unload the machine with the heavy end up the ramp.
- Avoid sudden acceleration or deceleration while driving the machine on a ramp as this could cause a loss of control or a tip-over situation.

1. If using a trailer, connect it to the towing vehicle and connect the safety chains.
2. If applicable, connect the trailer brakes and lights.
3. Lower the ramp (Figure 24).
4. Raise the platform.

Important: Always keep the platform up when loading and unloading the machine.

5. Load the machine onto the trailer with the heavy end up the ramp (Figure 25).
 - If the attachment is installed, load the machine with the front up the ramp.
 - If the attachment is not installed, load the machine with the rear up the ramp.

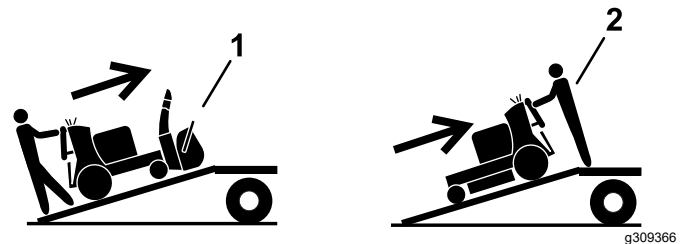
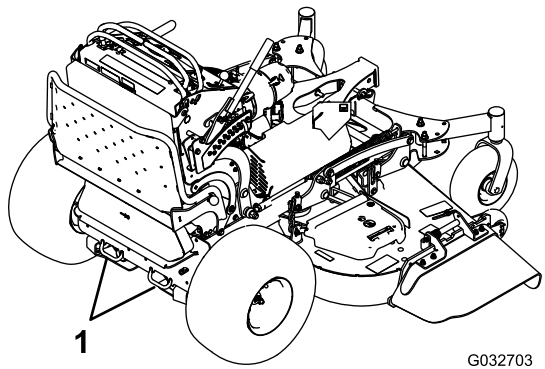


Figure 25

g309366

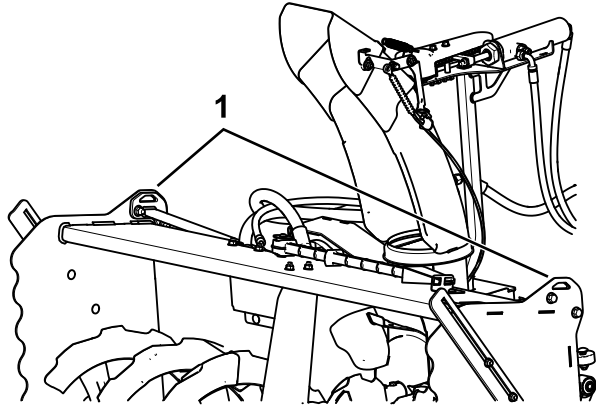
- | | |
|---|---|
| 1. Machine with attachment—load the machine with the front up the ramp. | 2. Machine with mower only or no attachment—load the machine with the rear up the ramp. |
|---|---|

6. Shut off the engine, remove the key, and engage the parking brake.
7. Tie down the machine near the front caster wheels and the rear bumper with straps, chains, cable, or ropes (Figure 26). Refer to local regulations for tie-down requirements.



G032703

g032703



g309802

Figure 26

1. Tie-down loops

Preventing Freeze-up after Use

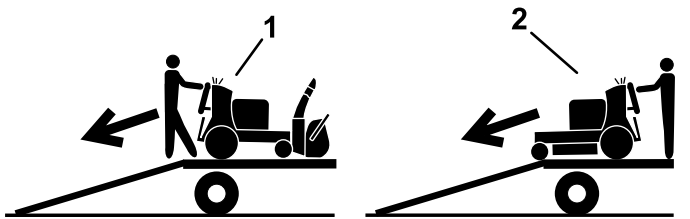
- In snowy and cold conditions, some controls and moving parts may freeze. **Do not use excessive force when trying to operate frozen controls.** If you have difficulty operating any control or part, start the engine and let it run for a few minutes. Thaw frozen parts before operating the machine.
- After using the machine, let the engine run for a few minutes to prevent moving parts from freezing. Shut off the engine, wait for all moving parts to stop, and remove all ice and snow from the machine.

Operating Tips

- Always set the throttle to the FAST position when throwing snow.
- Remove snow as soon as possible after it falls. This produces the best snow removal results.
- Do not overload the snowthrower by clearing snow at too fast a rate.
- If the engine slows down or the front of the snowthrower rides up, reduce the forward speed.
- Discharge snow downwind whenever possible and overlap each pass to ensure complete snow removal. If wheels slip, reduce the forward speed.
- Run the snowthrower for a few minutes after clearing snow so that moving parts do not freeze.

Unloading the Machine

1. Lower the ramp.
2. Unload the machine from the trailer with the heavy end up the ramp (**Figure 27**).
 - If the attachment is installed, unload the machine with the front up the ramp.
 - If the attachment is not installed, unload the machine with the rear up the ramp.



g309767

Figure 27

Machines without the attachment installed

1. Machine with attachment—unload the machine with the front up the ramp.
2. Machine without attachment—unload the machine with the rear up the ramp.

Maintenance

⚠ CAUTION

If you leave the key in the switch, someone could accidentally start the engine and seriously injure you or other bystanders.

Shut off the engine and remove the key from the switch before you perform any maintenance.

Maintenance Safety

Read the following safety precautions before performing any maintenance on the machine:

- Before servicing, adjusting, or cleaning the machine, shut off the engine and remove the key.
- Always wear eye protection while performing an adjustment or repair to protect your eyes from foreign objects that the machine may throw.
- Check all fasteners at frequent intervals for proper tightness to ensure that the machine is in safe working condition.

Adjusting the Skids

Service Interval: Every 50 hours—Check the skids.

Check the skids to ensure that the auger does not contact the paved or gravel surface. Adjust the skids as needed to compensate for wear.

1. Park the machine on a level surface, disengage the PTO, and engage the parking brake.
2. Shut off the engine, remove the key, and wait for all moving parts to stop before leaving the operating position.
3. Loosen the nuts that secure both skids to the auger sides until the skids slide up and down easily (Figure 28).

Important: Support the auger blades above the ground using the skids.

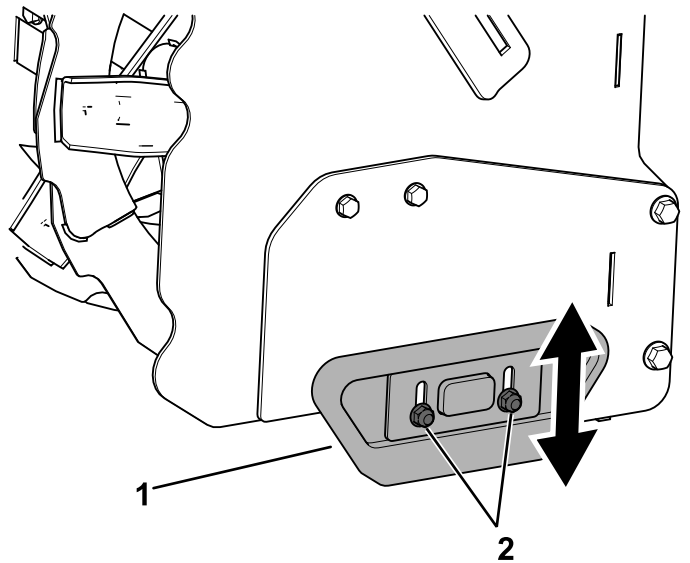


Figure 28

1. Skid
2. Nut (2)

4. Move the skids down until they are even with the ground.
5. Ensure that the trip edges are 3 mm (1/8 inch) above and parallel to a level surface (Figure 30).

Note: If the pavement is cracked, rough, or uneven, adjust the skids to raise the trip edges. For gravel surfaces, adjust the skids further down to prevent the machine from picking up rocks.

6. Firmly tighten the nuts that secure both skids to the auger sides.

Note: To quickly adjust the skids if they loosen, support the trip edges 3 mm (1/8 inch) off the pavement, then adjust the skids down to the pavement

7. Adjust the stop bolt as follows:

- A. Support the A-frame using blocks or a cylinder lock.
- B. Loosen the jam nut.

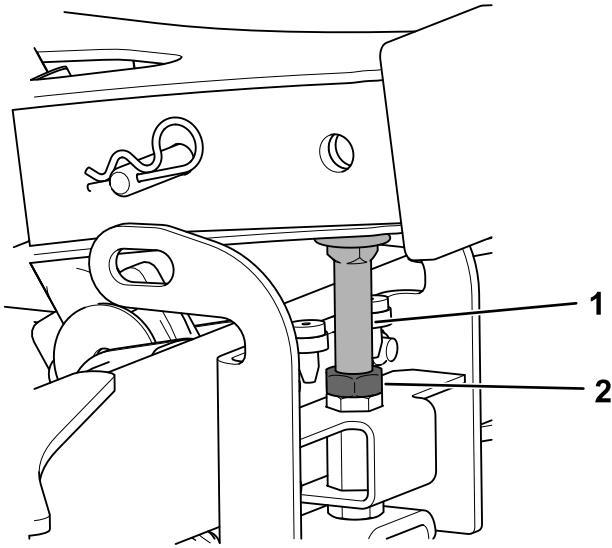


Figure 29

g330392

1. Stop bolt
2. Jam nut

- C. Adjust the stop bolt until it contacts the A-frame.

Note: This prevents the hydraulics from applying force on the skids and reduces wear.

Replacing the Trip Edges

Service Interval: Every 50 hours—Check the trip edges.

Replace the trip edges when they are worn.

Note: Operating conditions affects trip-edge wear. Operating the snowthrower on dry pavement will cause the trip edges to wear faster than operating it on wet snow.

1. Park the machine on a level surface, disengage the PTO, and engage the parking brake.
2. Shut off the engine, remove the key, and wait for all moving parts to stop before leaving the operating position.
3. Remove the bolts and retainer plate.

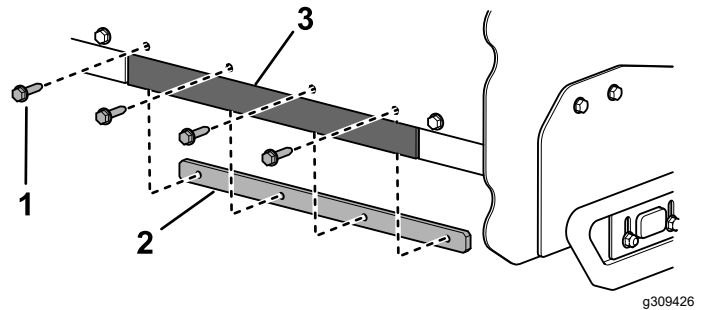


Figure 30

g309426

1. Bolt (4)
2. Retainer plate
3. Trip Edge

4. Remove the trip edge and install a new one using the retainer plate and fasteners.

Checking the Auger-Gearbox-Oil Level

Service Interval: Yearly

1. Park the machine on a level surface, disengage the PTO, and engage the parking brake.
2. Shut off the engine, remove the key, and wait for all moving parts to stop before leaving the operating position.
3. Clean the area around the pipe plug and remove the pipe plug from the gearbox.

Note: If needed, use pliers to assist in removing the pipe plug.

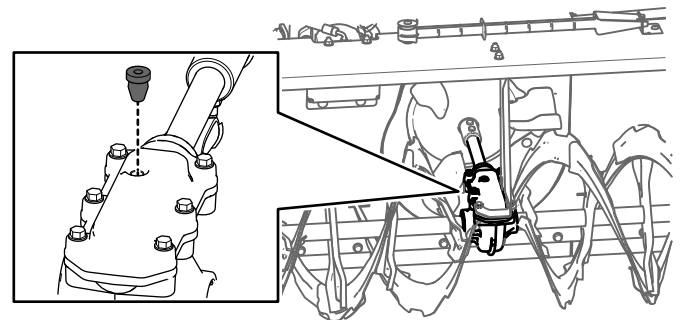


Figure 31

g334133

4. Check the oil level using a suitable measuring device, such as a clean cable tie. The oil should be approximately 3.8 cm (1.5 inches) below the filler opening

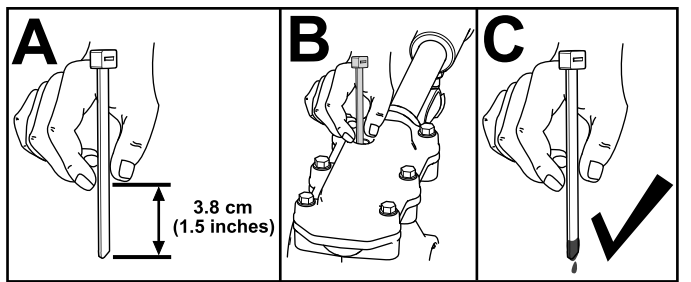


Figure 32

- If the oil level is low, add SAE 80W-140 gear oil lubricant to the gearbox, then check the oil level again.

Note: Do not use synthetic oil.

- Install the pipe plug in the gearbox.

Checking the Belt

Service Interval: Every 150 hours

Check belt for cracks, frayed edges, burn marks, wear, signs of overheating, or any other damage.

The signs of a worn belt are squealing while the belt is rotating, cracks, cuts or gouges. Replace the belt if you detect any of these signs.

Replacing the Belt

- Park the machine on a level surface, disengage the PTO, and engage the parking brake.
- Shut off the engine, remove the key, and wait for all moving parts to stop before leaving the operating position.
- Remove the 4 hairpin cotters securing the belt cover (Figure 33).

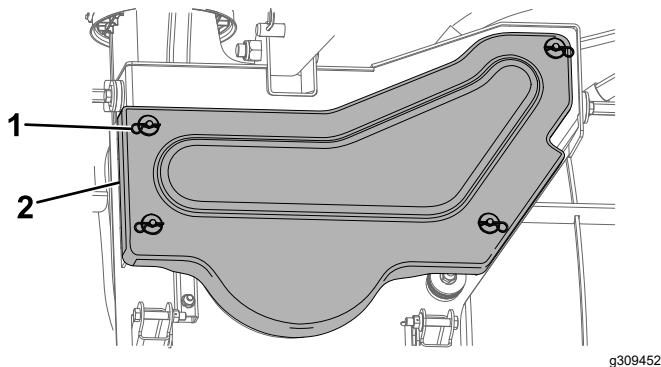


Figure 33

- Hairpin cotter (4)
- Belt cover

- Remove the belt from the pulleys (Figure 34).

⚠ WARNING

The spring is under tension when installed and can cause personal injury.

Be careful when removing the belt.

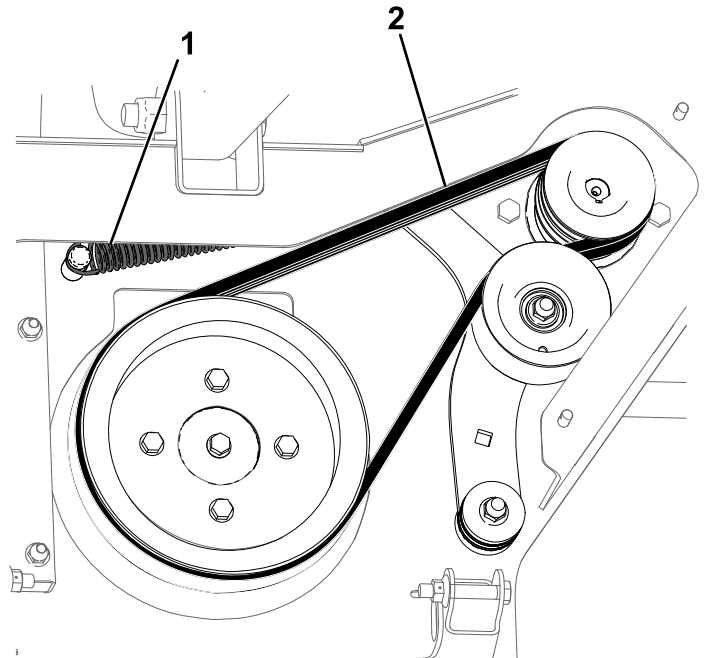


Figure 34

- Spring
- Belt

- Wrap the new belt around the small pulley (Figure 34).
 - Rotate the large pulley by hand and wrap the belt around it as it rotates (Figure 34).
- Note:** The tension on the spring will increase as you rotate the belt on the pulley.
- Install the belt cover and secure it using the 4 hairpin cotters (Figure 33).

Adjusting the Drive Chain

- Park the machine on a level surface, disengage the PTO, and engage the parking brake.
- Shut off the engine, remove the key, and wait for all moving parts to stop before leaving the operating position.
- Remove the drive-chain cover.

Storage

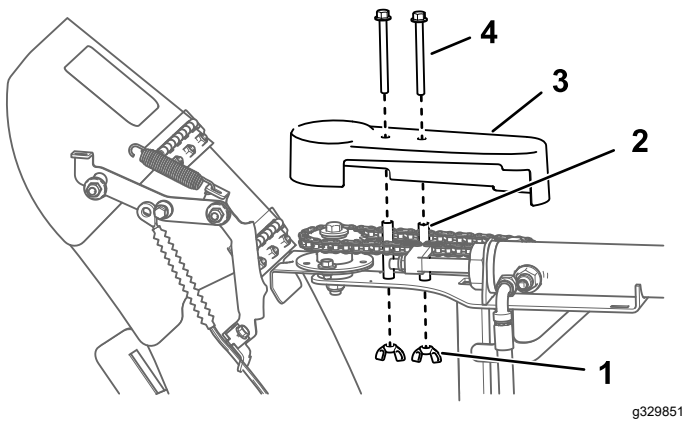


Figure 35

g329851

1. Wing nut (2)
2. Spacer
3. Cover
4. Bolt (2)

1. Before long term storage, wash the attachment with mild detergent and water to remove dirt and grime.
2. Check the condition of the scraper blade.
3. Check and tighten all bolts, nuts, and screws. Repair or replace any damaged or worn parts.
4. Paint all scratched or bare metal surfaces. Paint is available from your Authorized Service Dealer.
5. Store the attachment in a clean, dry garage or storage area. Cover it to protect it and keep it clean.

4. Loosen the nut.

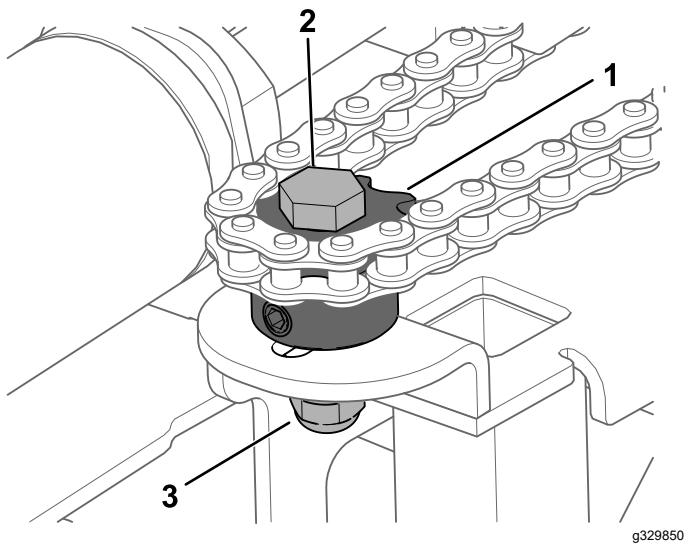


Figure 36

g329850

1. Sprocket
2. Shoulder bolt
3. Nut

5. Using a closed-end wrench, pull the nut to apply tension to the chain, and tighten the bolt using a socket wrench.

Note: Ensure that the chain is tight but does not bind.

Important: If you remove the shoulder bolt, apply anti-seize compound to the bolt before installing it.

6. Tighten the nut.
7. Install the cover as shown in [Figure 35](#).

California Proposition 65 Warning Information

What is this warning?

You may see a product for sale that has a warning label like the following:



WARNING: Cancer and Reproductive Harm—www.p65Warnings.ca.gov.

What is Prop 65?

Prop 65 applies to any company operating in California, selling products in California, or manufacturing products that may be sold in or brought into California. It mandates that the Governor of California maintain and publish a list of chemicals known to cause cancer, birth defects, and/or other reproductive harm. The list, which is updated annually, includes hundreds of chemicals found in many everyday items. The purpose of Prop 65 is to inform the public about exposure to these chemicals.

Prop 65 does not ban the sale of products containing these chemicals but instead requires warnings on any product, product packaging, or literature with the product. Moreover, a Prop 65 warning does not mean that a product is in violation of any product safety standards or requirements. In fact, the California government has clarified that a Prop 65 warning "is not the same as a regulatory decision that a product is 'safe' or 'unsafe.'" Many of these chemicals have been used in everyday products for years without documented harm. For more information, go to <https://oag.ca.gov/prop65/faqs-view-all>.

A Prop 65 warning means that a company has either (1) evaluated the exposure and has concluded that it exceeds the "no significant risk level"; or (2) has chosen to provide a warning based on its understanding about the presence of a listed chemical without attempting to evaluate the exposure.

Does this law apply everywhere?

Prop 65 warnings are required under California law only. These warnings are seen throughout California in a wide range of settings, including but not limited to restaurants, grocery stores, hotels, schools, and hospitals, and on a wide variety of products. Additionally, some online and mail order retailers provide Prop 65 warnings on their websites or in catalogs.

How do the California warnings compare to federal limits?

Prop 65 standards are often more stringent than federal and international standards. There are various substances that require a Prop 65 warning at levels that are far lower than federal action limits. For example, the Prop 65 standard for warnings for lead is 0.5 µg/day, which is well below the federal and international standards.

Why don't all similar products carry the warning?

- Products sold in California require Prop 65 labelling while similar products sold elsewhere do not.
- A company involved in a Prop 65 lawsuit reaching a settlement may be required to use Prop 65 warnings for its products, but other companies making similar products may have no such requirement.
- The enforcement of Prop 65 is inconsistent.
- Companies may elect not to provide warnings because they conclude that they are not required to do so under Prop 65; a lack of warnings for a product does not mean that the product is free of listed chemicals at similar levels.

Why does Toro include this warning?

Toro has chosen to provide consumers with as much information as possible so that they can make informed decisions about the products they buy and use. Toro provides warnings in certain cases based on its knowledge of the presence of one or more listed chemicals without evaluating the level of exposure, as not all the listed chemicals provide exposure limit requirements. While the exposure from Toro products may be negligible or well within the "no significant risk" range, out of an abundance of caution, Toro has elected to provide the Prop 65 warnings. Moreover, if Toro does not provide these warnings, it could be sued by the State of California or by private parties seeking to enforce Prop 65 and subject to substantial penalties.