



# Gearbox Bracket Kit

60in or 72in Rotary Mower, Groundsmaster® 3200 or 3300 Series  
Traction Unit

Model No. 144-0505

## Installation Instructions

# Installation

## Loose Parts

Use the chart below to verify that all parts have been shipped.

Description	Qty.	Use
No parts required	—	Prepare the machine.
Right bracket	1	Install the kit.
Left bracket	1	
Flange head bolt (3/8 x 3/4 inch)	6	
Decal	1	

## Preparing the Machine

1. Park the machine on a level surface.
2. Engage the parking brake.
3. Lower the cutting unit.
4. Shut off the engine and remove the key.

## Installing the Kit

1. Install the decal to the left bracket as shown in [Figure 1](#).

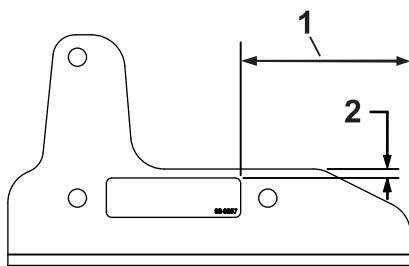


Figure 1

1. 95 mm (3-3/4 inches)
2. 5 mm (3/16 inch)

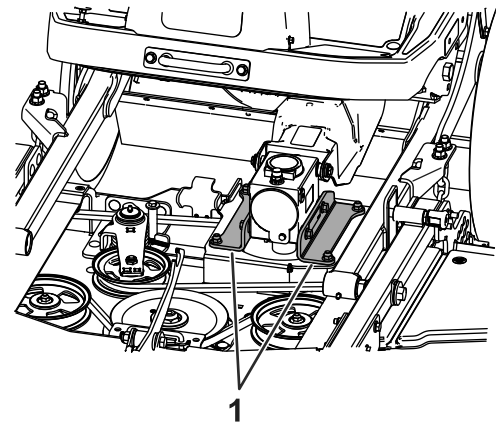


Figure 2

g342085

1. Existing gearbox brackets

5. Retain the carriage bolts and nuts that attach the brackets to the mower deck.

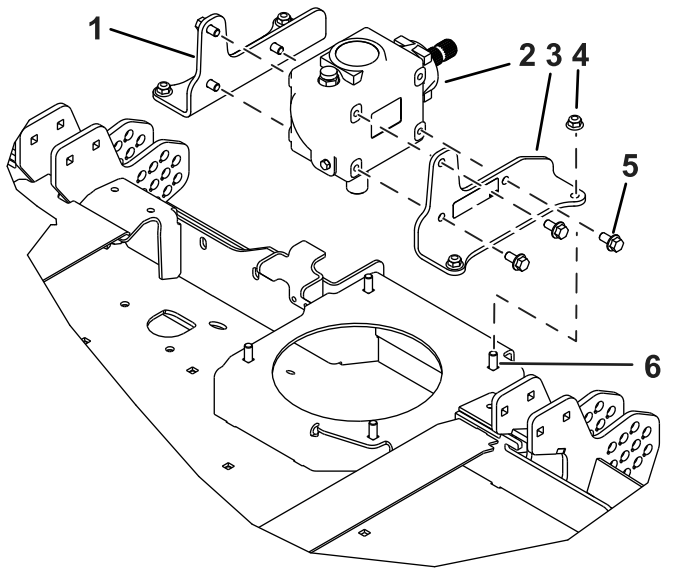
2. Remove the center cutting-unit cover.
3. Remove the belt from the gearbox pulley.
4. Remove the existing gearbox brackets ([Figure 2](#)).



6. Install the new brackets to the side of the gearbox with 6 new bolts (3/8 x 3/4 inch); refer to [Figure 3](#).

**Note:** There is a left and right bracket.

**Important:** Torque the new bolts on the side of the gearbox to 4.9 to 5.3 N·m (43 to 47 ft-lb).



g342084

**Figure 3**

- |                          |                           |
|--------------------------|---------------------------|
| 1. Right gearbox bracket | 4. Existing nut           |
| 2. Gearbox               | 5. Bolt (3/8 x 3/4 inch)  |
| 3. Left gearbox bracket  | 6. Existing carriage bolt |

- 
7. Install the brackets to the mower deck with the previously removed carriage bolts and nuts [Figure 3](#).
  8. Torque the carriage-bolt nuts to 3.4 to 4.1 N·m (30 to 36 ft-lb).
  9. Install the belt to the gearbox pulley.
  10. Install the center cutting-unit cover.