



Count on it.

Parts Catalog

**Flex-Force Power System™
60V MAX 55cm Recycler® Lawn Mower**

Model No. 21863—Serial No. 400000000 and Up

Model No. 21863T—Serial No. 400000000 and Up



Ordering Replacement Parts

To order replacement parts, please supply the part number, the quantity, and the description of each part desired.

Understanding Reference Numbers

Each identified part in an illustration has a reference number. The reference number for a part also appears in the parts list, along with other information about the part.

This catalog uses two special reference number formats, one to indicate parts in a service assembly and another to indicate the quantity of a given part in an illustration.

Service Assembly Reference Numbers

Parts in service assemblies have reference numbers in the form a:b. The a represents the reference number of the entire service assembly and the b represents a sequential number unique to each part within the service assembly.

For example, a wheel assembly might be identified by reference number 6, the tire by 6:1, the valve by 6:2, and the wheel by 6:3. When you order the assembly identified by reference number 6, you receive all parts identified by reference numbers 6:1, 6:2, and 6:3. However, you may also order any part individually. Reference numbers of this type appear in illustration and in parts lists.

Reference Numbers Indicating Quantity

In an illustration, if a reference number indicates more than one part, the reference number has the form nX y. The n represents the quantity of the part, the X is the multiplication symbol, and the y represents the reference number.

For example, in an illustration, the reference number 2X 37 means that two of the parts identified by reference number 37 are indicated.

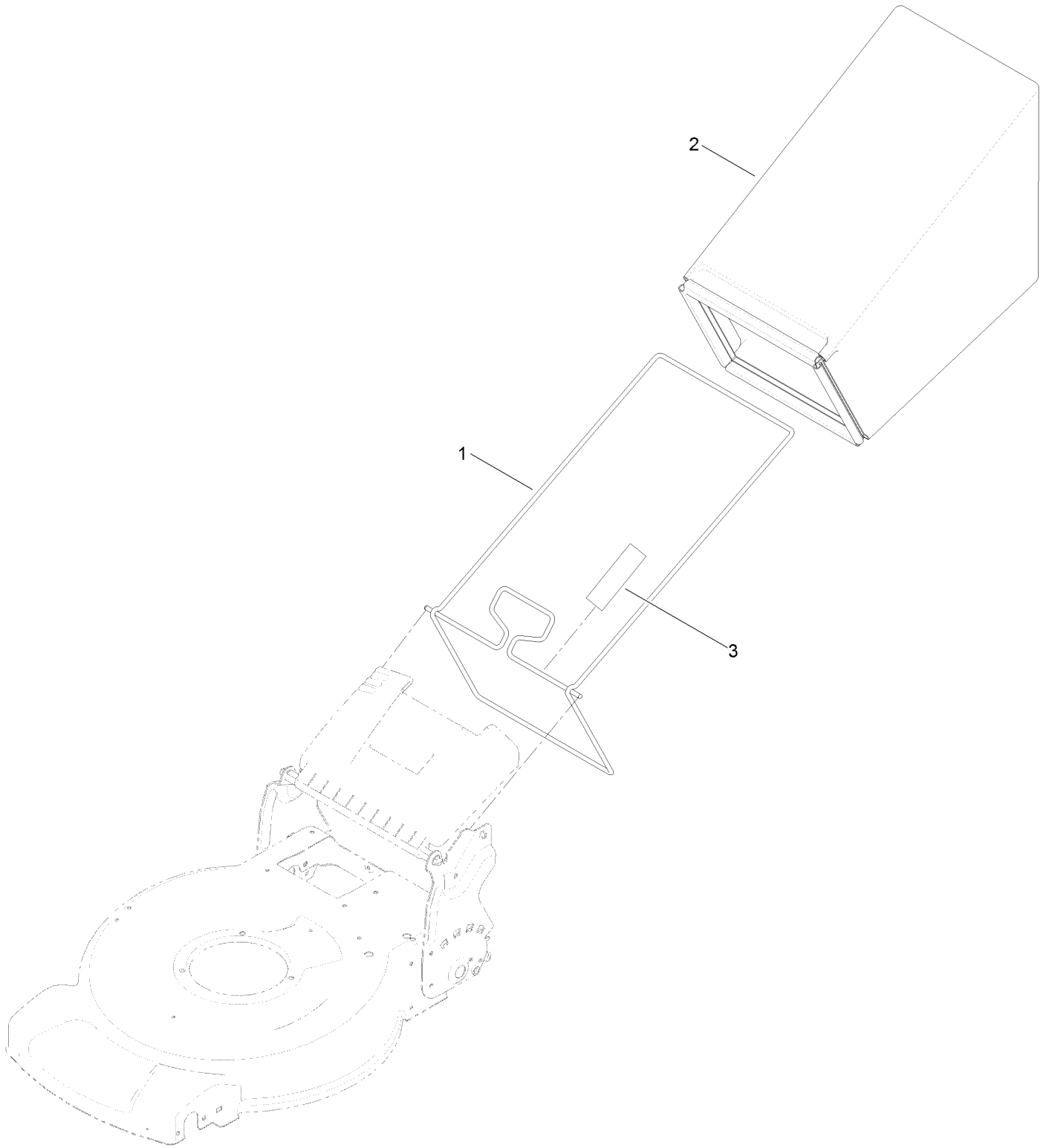
Contents

Housing and Chute Assembly	4
Rear Bag Assembly	6
Motor and Blade Assembly	8
Motor Module Assembly No. 140-1275 Lower Shroud Assembly	10
Motor Module Assembly No. 140-1275 Upper Shroud Assembly	12
Front Wheel and Height-of-Cut Assembly	14
Rear Wheel, Transmission and Height-of-Cut Assembly	16
Handle Assembly	18
Starter Switch Assembly	20
Attachments and Accessories	22

Housing and Chute Assembly (continued)

<i>Ref.</i>	<i>Part Number</i>	<i>Qty.</i>	<i>Description</i>	<i>Ref.</i>	<i>Part Number</i>	<i>Qty.</i>	<i>Description</i>
1	133-1946	1	Housing ASM	19:2	131-4514	1	Decal-Warning
1:2	112-8760	1	Decal-Danger	20	115-2859	1	Spring-Torsion
1:3	137-9196	1	Decal-Quick Wash	21	114-7924	1	Spring-Torsion
1:4	125-5092	1	Decal-Placement, Foot	22	112-6400	1	Port-Washout
2	115-4667-01	1	Baffle-Front	23	112-6401	1	Coupling-Hose, Washout Port
3	115-4672	1	Kicker-Front	25	112-6438	1	Washer-Seal, Washout Port
4	139-1703	1	Screw-Plastic, PPH	26	139-1721	1	Washer-Lock, Int Tooth
5	139-8982	1	Baffle-Rear	27	3218-6	1	Nut-Jam
6	136-5882	1	Chute-Recycle	28	112-6437	1	Adapter-Connect, Quick
7	137-3099	9	Screw-Plastite, HWH	29	114-7987	1	Bumper
9	137-4795	2	Screw	30	105-6849	2	Screw-Forming, Thread
10	99-5291	1	Rod-Cover	31	130-6660	2	Cap-Plug
11	99-5293	1	Spring-Torsion	43	125-5026	1	Decal
12	138-5316	1	Deflector-Discharge, Side	47	120-9676	2	Screw-Plastite
13	115-8447	1	Chute-Discharge, Side	49	138-3293	1	Bracket-Lockout
14	114-7960	1	Deflector-Recycle	50	107-7463	1	Spacer
15	114-7958	1	Knob-Recycle	51	107-7462	1	Spring-Torsion
16	114-7959	1	Latch-Recycle	52	138-3292	1	Lever-Lockout
17	117-1031	1	Spring-Compression	53	106-9169	1	Screw-HWH
18	32104-120	2	Screw-PPH	54	139-1712	1	Nut-Hex Flange
19	137-9139	1	Rear Door ASM				

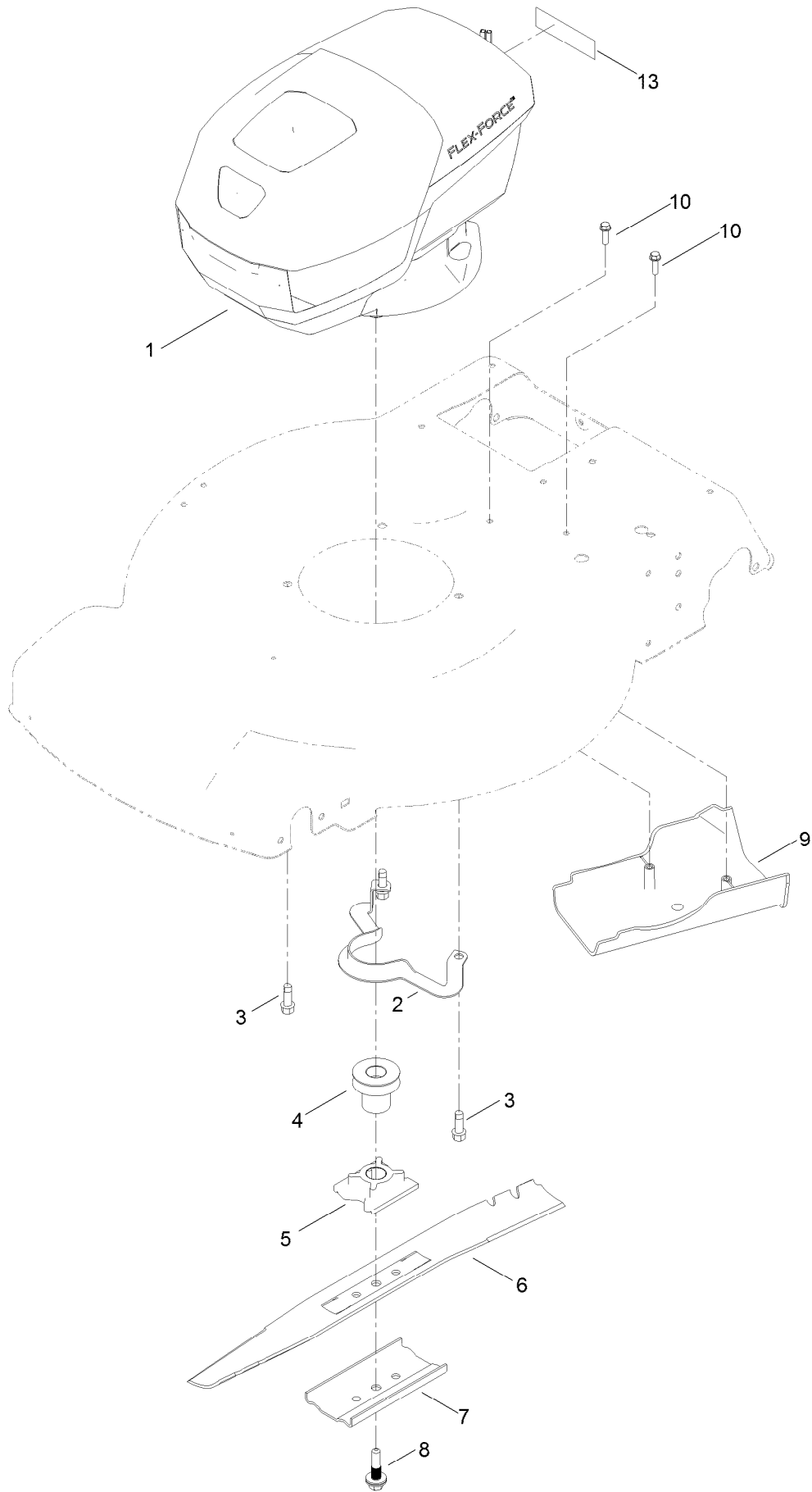
Rear Bag Assembly



Rear Bag Assembly (continued)

<i>Ref.</i>	<i>Part Number</i>	<i>Qty.</i>	<i>Description</i>
1	132-4529-03	1	Bag Frame ASM
2	114-2664	1	Grass Bag ASM
3	139-8986	1	Decal-Warning (Bag)

Motor and Blade Assembly

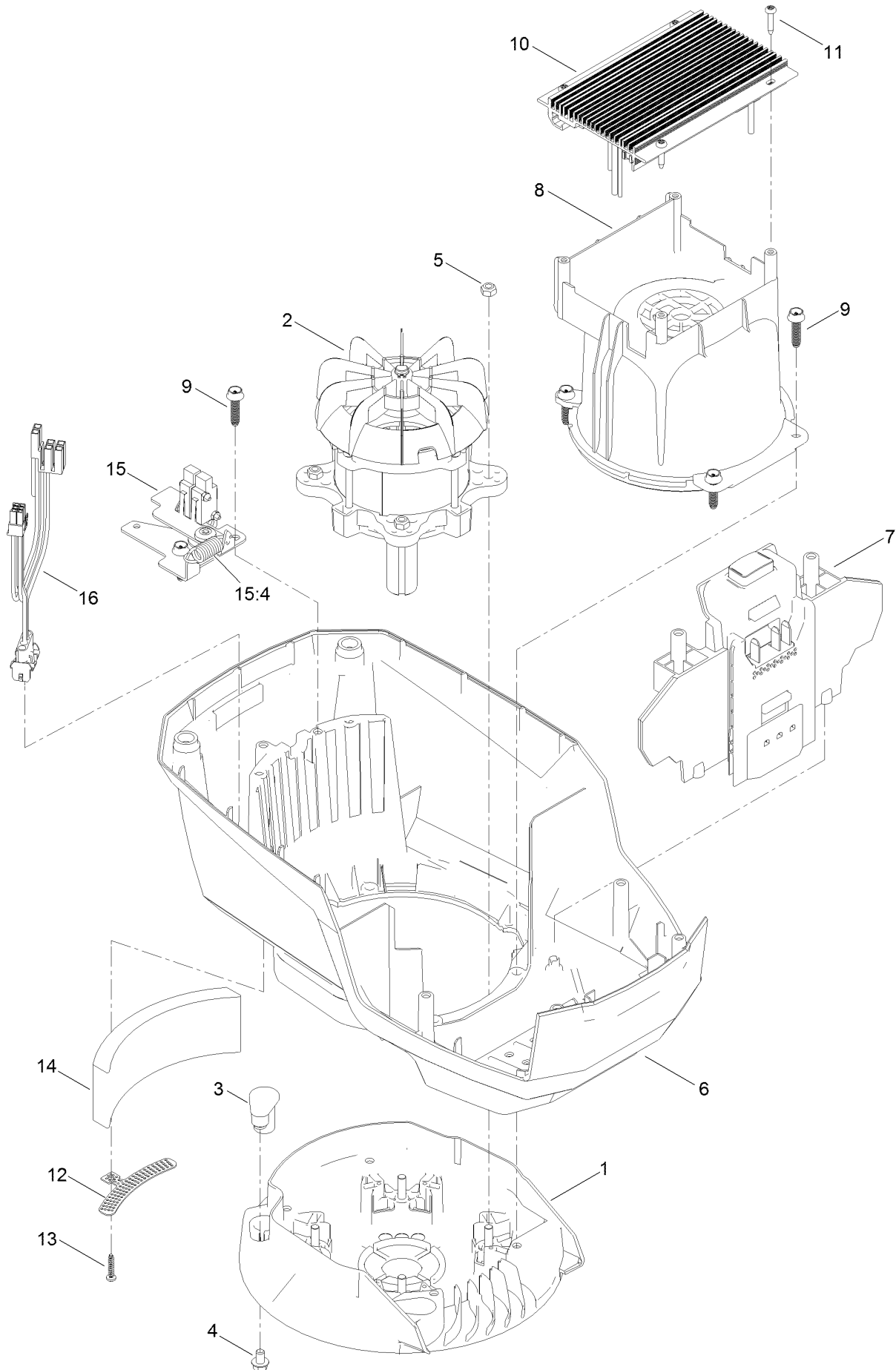


Motor and Blade Assembly (continued)

<i>Ref.</i>	<i>Part Number</i>	<i>Qty.</i>	<i>Description</i>	<i>Ref.</i>	<i>Part Number</i>	<i>Qty.</i>	<i>Description</i>
1	140-1275	1	Motor Module (60V)	7	108-3766-03	1	Support-Blade
2	105-3030-03	1	Guide-Belt	8	117-5270	1	Bolt-Blade
3	95-1726	3	Screw-Taptite	9	114-7937	1	Cover-Belt
4	140-1265	1	Pulley	10	137-3099	2	Screw-Plastite, HWH
5	125-2454	1	Retainer-Blade	13	133-8061	1	Decal-Warning
6	131-9683-03	1	Blade				

Motor Module Assembly No. 140-1275

Lower Shroud Assembly

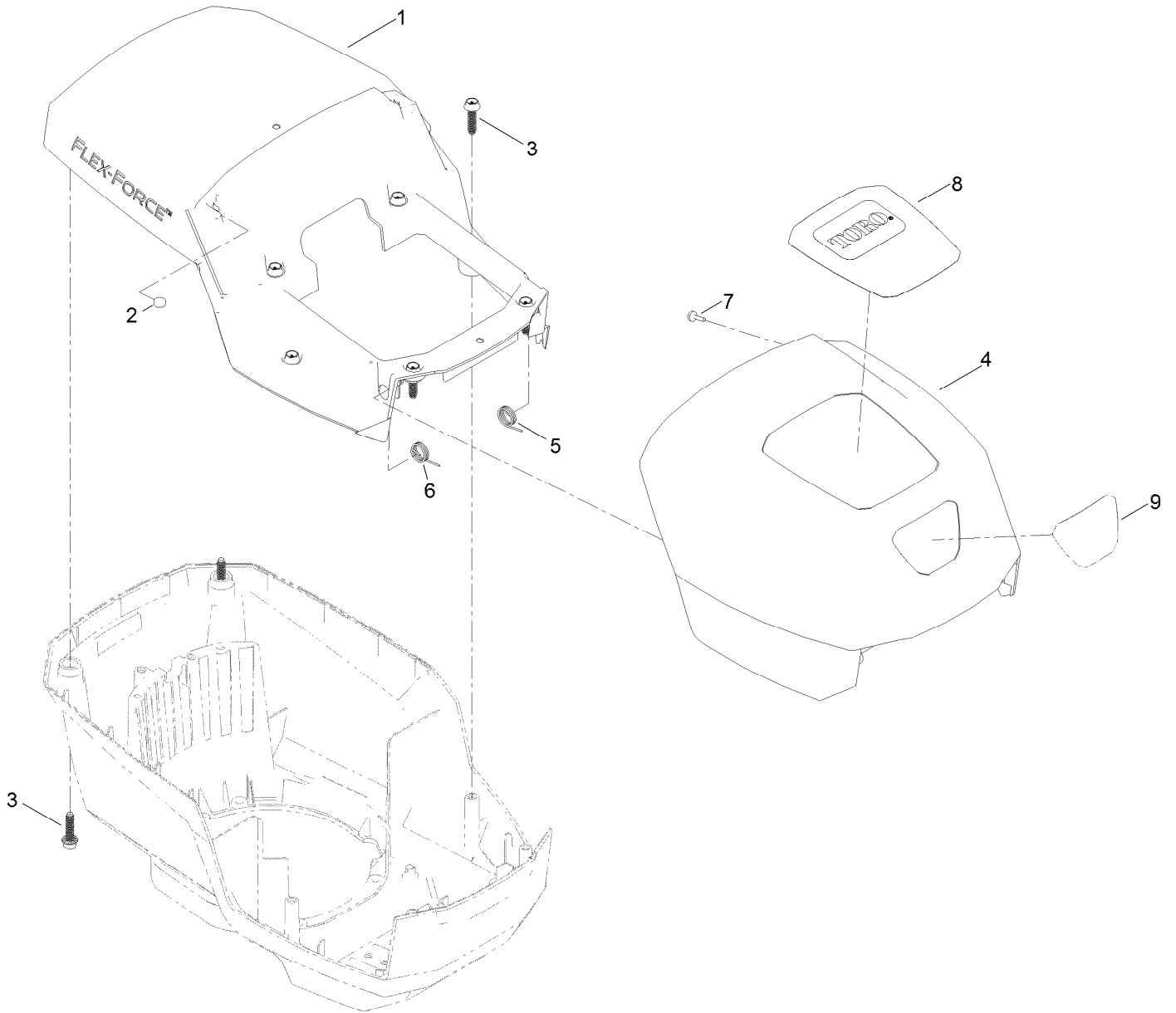


Motor Module Assembly No. 140-1275

Lower Shroud Assembly (continued)

<i>Ref.</i>	<i>Part Number</i>	<i>Qty.</i>	<i>Description</i>	<i>Ref.</i>	<i>Part Number</i>	<i>Qty.</i>	<i>Description</i>
1	139-6628	1	Base-Mount, Motor	10	140-4153	1	Driver-Motor
2	139-6630	1	Motor	11	139-6642	4	Screw
3	131-9732	3	Insert-Mount, Motor	12	139-6635	1	Bracket-Foam
4	137-4795	3	Screw	13	138-3273	1	Screw-Plastic, PPH
5	115-7373	4	Nut-Lock	14	139-6636	1	Foam
6	139-6631	1	Shroud-Lower	15	133-1918	1	Bail Switch ASM
7	139-6632	1	Battery Reciever ASM	15:4	104-6478	1	Spring-Extension
8	139-6633	1	Shroud-Motor	16	139-6637	1	Harness-Wire
9	130-6658	6	Screw-Flange, Plastic				

Motor Module Assembly No. 140-1275 Upper Shroud Assembly

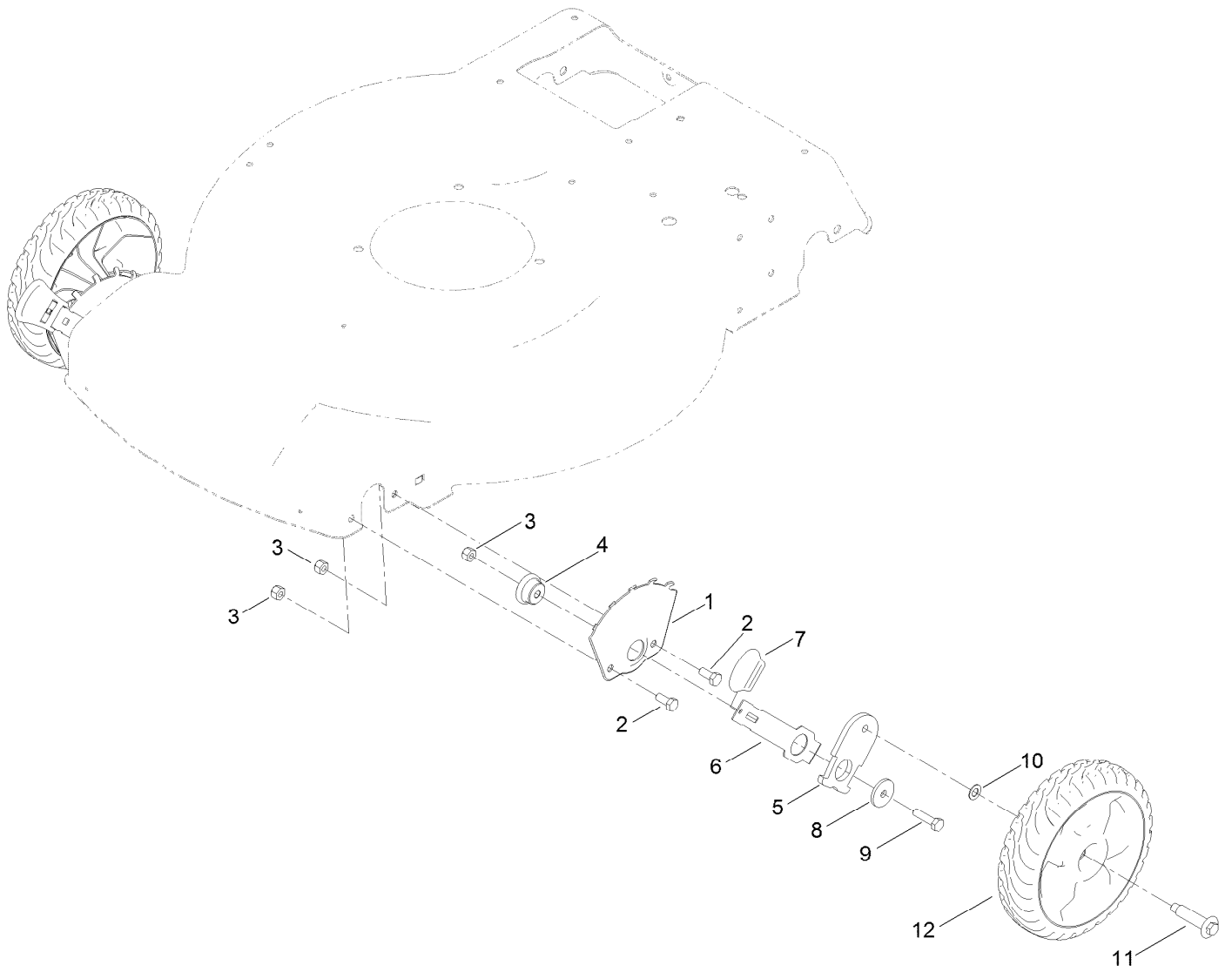


Motor Module Assembly No. 140-1275

Upper Shroud Assembly (continued)

<i>Ref.</i>	<i>Part Number</i>	<i>Qty.</i>	<i>Description</i>	<i>Ref.</i>	<i>Part Number</i>	<i>Qty.</i>	<i>Description</i>
1	139-6638	1	Shroud-Upper	6	139-6641	1	Spring-RH
2	114-5896	2	Magnet	7	95-4234	2	Screw-PPH
3	130-6658	8	Screw-Flange, Plastic	8	136-9118	1	Decal-Hood, Top
4	139-6639	1	Hood	9	136-9119	1	Decal-Hood, Front
5	139-6640	1	Spring-LH				

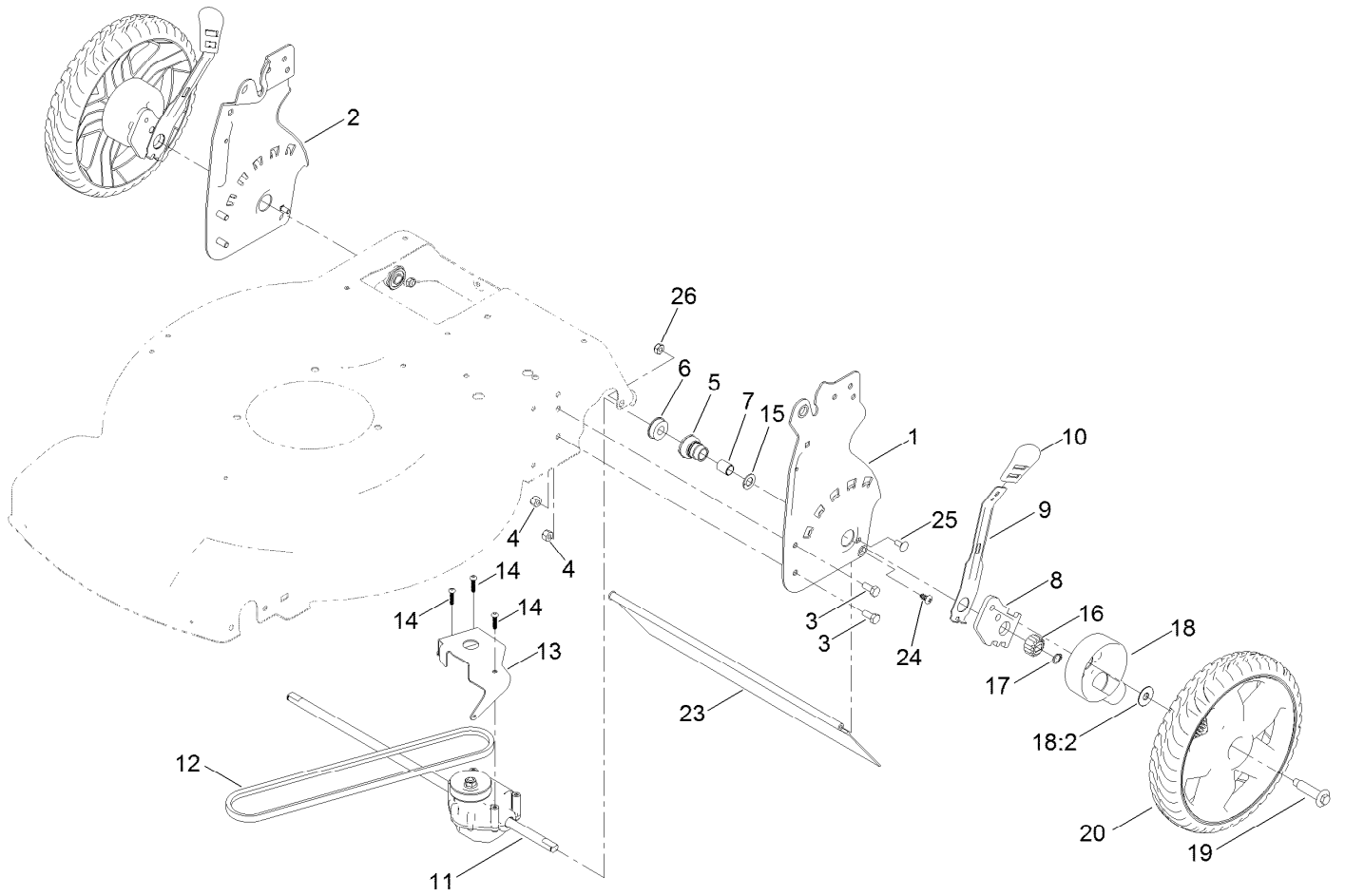
Front Wheel and Height-of-Cut Assembly



Front Wheel and Height-of-Cut Assembly (continued)

<i>Ref.</i>	<i>Part Number</i>	<i>Qty.</i>	<i>Description</i>	<i>Ref.</i>	<i>Part Number</i>	<i>Qty.</i>	<i>Description</i>
1	115-1956-03	2	Plate-HOC, Front	7	110-0549	2	Knob-HOC
2	137-3052	4	Screw-HH	8	139-1704	2	Washer-Flat
3	119-4038	6	Nut-Hex	9	120-9696	2	Screw-HH
4	105-1818	2	Bushing-Mount, HOC	10	40-1940	2	Washer
5	137-9128	2	Arm-Pivot, Front	11	614650	2	Bolt-Shoulder
6	105-1809	2	Arm-Spring	12	137-4833	2	8In Wheel ASM

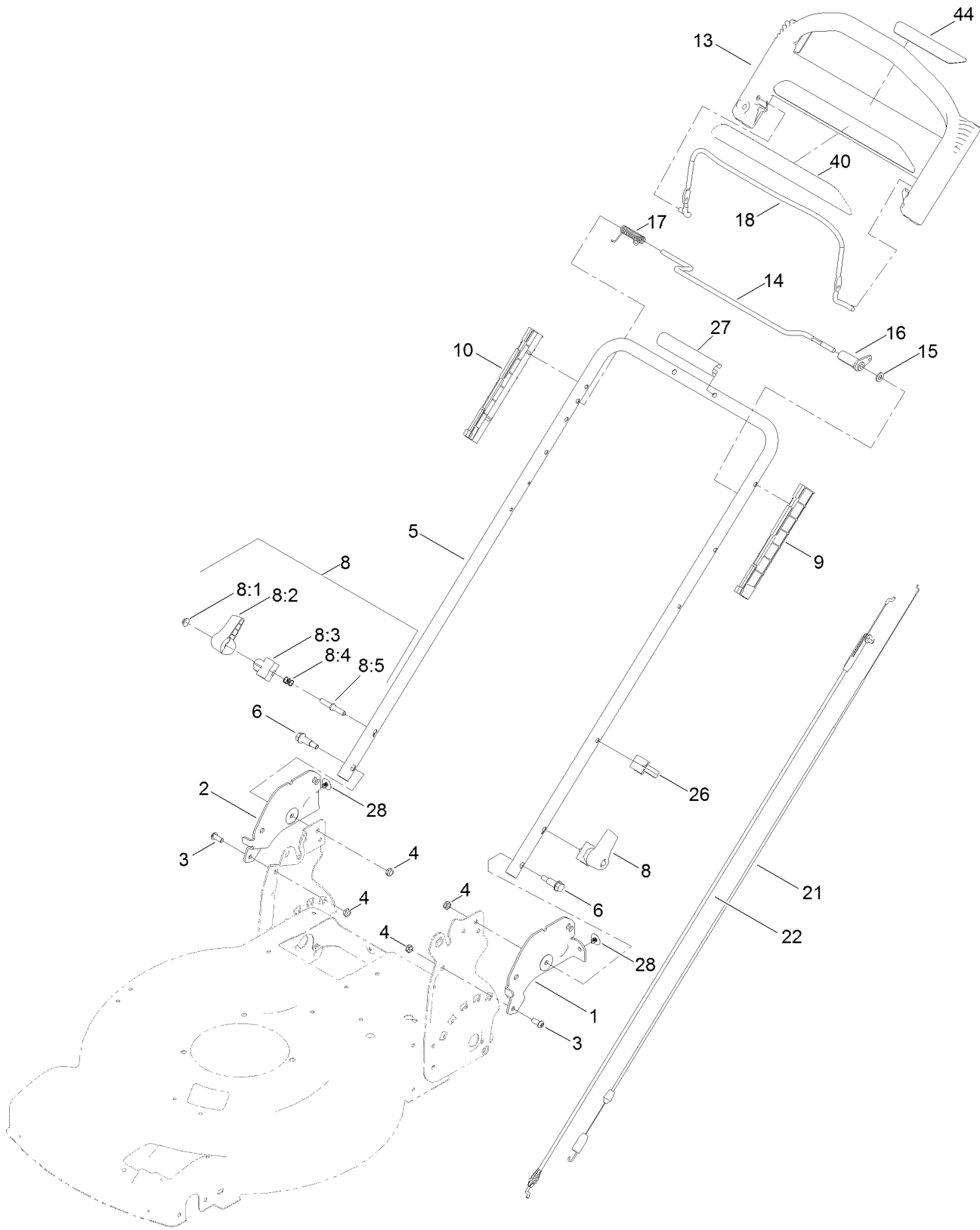
Rear Wheel, Transmission and Height-of-Cut Assembly



Rear Wheel, Transmission and Height-of-Cut Assembly (continued)

<i>Ref.</i>	<i>Part Number</i>	<i>Qty.</i>	<i>Description</i>	<i>Ref.</i>	<i>Part Number</i>	<i>Qty.</i>	<i>Description</i>
1	136-5887-03	1	Plate-HOC, Rwd (LH)	14	120-9676	3	Screw-Plastite
2	136-5888-03	1	Plate-HOC, Rwd (RH)	15	110-7191	2	Washer-Thrust
3	137-3052	4	Screw-HH	16	131-5399	2	Gear-Pinion, 15T
4	119-4038	4	Nut-Hex	17	32151-61	2	Ring-Retaining
5	108-9779	2	Retainer-Bushing, HOC	18	136-9059	2	Gear Cover ASM
6	104-8699	2	Bearing-Ball	18:2	614426	1	Washer-Stepped
7	108-9782	2	Bushing-Sleeve	19	614650	2	Bolt-Shoulder
8	136-9090	2	Arm-Pivot, Rear	20	137-4843	2	Wheel Gear ASM (11In)
9	132-4486	2	Arm-Spring	23	120-7012	1	Shield-Trailing
10	110-0549	2	Knob-HOC	24	139-1692	2	Screw-Thd
11	137-4825	1	Transmission-Rwd (6:1)	25	100-1445	2	Bolt-CARR
12	91-2258	1	Belt-V	26	139-1724	2	Nut-Lock
13	132-4481-01	1	Bracket-Transmission				

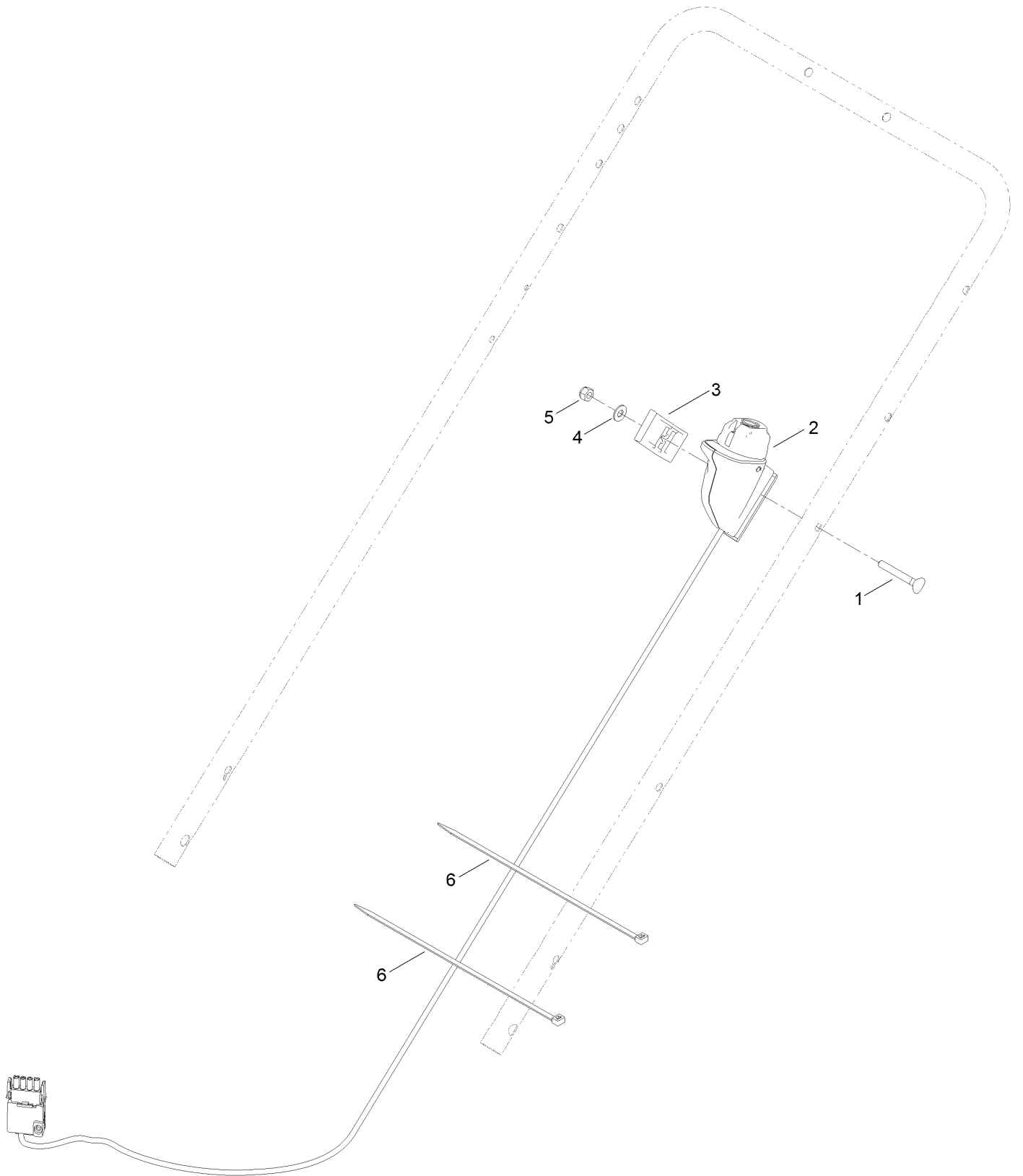
Handle Assembly



Handle Assembly (continued)

<i>Ref.</i>	<i>Part Number</i>	<i>Qty.</i>	<i>Description</i>	<i>Ref.</i>	<i>Part Number</i>	<i>Qty.</i>	<i>Description</i>
1	137-9109-03	1	Plate-Handle, LH	13	104-8678	1	Handle-Control
2	137-9110-03	1	Plate-Handle, RH	14	136-7150	1	Bar-Control, Traction
3	3274-55	2	Screw-HSBH	15	120-9683	1	Washer-Plain
4	137-3089	4	Nut-Hex	16	99-1589	1	Lever-Traction
5	132-4471-05	1	Handle	17	136-7166	1	Spring-Torsion
6	130-2344	2	Bolt-Shoulder	18	131-0880-03	1	Bail-Brake
8	138-3249	2	Quick Release ASM	21	115-8435	1	Cable-Traction
8:1	32112-11	1	Nut-Push	22	115-8437	1	Cable-Brake
8:2	138-3248	1	Lever-Release	26	114-7988	1	Guide-Cable
8:3	138-3253	1	Anchor-Spring	27	131-4551	1	Cover-Handle
8:4	115-2858	1	Spring-Compression	28	130-6721	2	Clip-Tree
8:5	138-3243	1	Rod-Release	40	120-3911	1	Decal-Handle
9	105-6842	1	Guide-LH	44	137-4802	1	Decal-Controls (60V)
10	105-6841	1	Guide-RH				

Starter Switch Assembly



Starter Switch Assembly (continued)

<i>Ref.</i>	<i>Part Number</i>	<i>Qty.</i>	<i>Description</i>	<i>Ref.</i>	<i>Part Number</i>	<i>Qty.</i>	<i>Description</i>
1	95-4453	1	Screw	4	139-1699	1	Washer-Flat
2	133-8140	1	Starter Switch ASM	5	137-3094	1	Nut-Hex
3	136-7029	1	Clamp-Cable	6	614249	2	Tie-Cable

Attachments and Accessories

For 21863 Flex-Force Power System 60V MAX 55cm Recycler Lawn Mower

Product Name	Model/Part
Traction Assist Handle Kit.....	131-4590
Lawn Striping Kit with 22in Roller.....	20601
Smart Stow Walk Power Mower Cover	490-2012
Bag-Walk Behind (Toro).....	490-7318
60V Brushless Blower (Bare Tool)	51825T
60V Brushless Trimmer (Bare Tool).....	51835T
60V Battery Charger 2 AMP CE.....	81802
60V 6.0 AH Battery CE	81860
60V 7.5 AH Battery CE	81875

For 21863T Flex-Force Power System 60V MAX 55cm Recycler Lawn Mower

Product Name	Model/Part
Traction Assist Handle Kit.....	131-4590
Lawn Striping Kit with 22in Roller.....	20601
Smart Stow Walk Power Mower Cover	490-2012
Bag-Walk Behind (Toro).....	490-7318
60V Brushless Blower (Bare Tool)	51825T
60V Brushless Trimmer (Bare Tool).....	51835T
60V Battery Charger 2 AMP CE.....	81802
60V 6.0 AH Battery CE	81860
60V 7.5 AH Battery CE	81875

Notes:



Count on it.