

Light Kit

Zero-Turn-Radius Side-Discharge or Rear-Discharge Riding Mower

Model No. 144-1992

Installation Instructions

Installation

Loose Parts

Use the chart below to verify that all parts have been shipped.

Description	Qty.	Use
No parts required	–	Prepare the machine.
LED light	2	Install the light kit (for machines with a round roll bar).
Hex-head screw (5/16 x 1 inch)—included with the LED light	2	
Locknut (5/16 inch)—included with the LED light	2	
Tube clamp	2	
Wire harness	1	
Rocker switch	1	
Cable tie	14	
LED light	2	Install the light kit (for machines with a square roll bar).
Hex-head screw (5/16 x 1 inch)—included with the LED light	2	
Locknut (5/16 inch)—included with the LED light	2	
Wire harness	1	
Rocker switch	1	
Cable tie	14	
Light-mount plate	2	
U-bolt	2	
Locknut (3/8 inch)	4	

Preparing the Machine

1. Park the machine on a level surface.
2. Disengage the blade-control switch.
3. Move the motion-control levers outward to the NEUTRAL-LOCK position.
4. Engage the parking brake.
5. Shut off the engine and remove the key.



Installing the Light Kit

For Machines with a Round Roll Bar

1. Slide or tip the seat forward.
2. Secure the 2 tube clamps to the roll bar in the desired location (Figure 1).

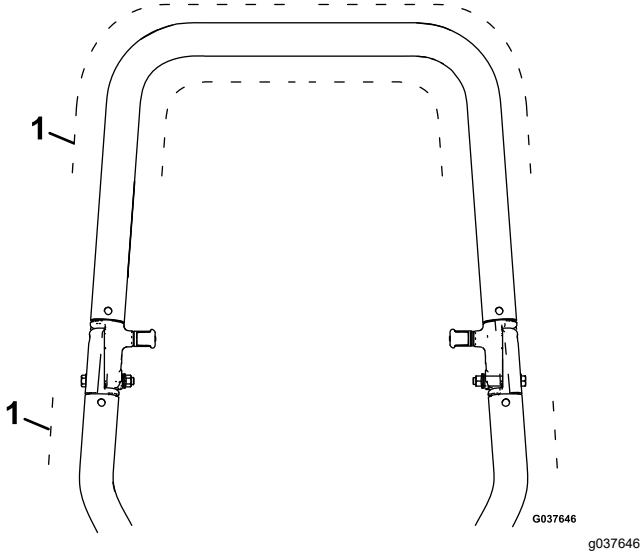


Figure 1

1. Mounting locations

3. Secure the 2 LED lights to the 2 tube clamps using the 2 hex-head screw (5/16 x 1 inch) and 2 locknuts (5/16 inch) as shown in Figure 2.

Note: Do not install the LED lights where they cover ROPS decals.

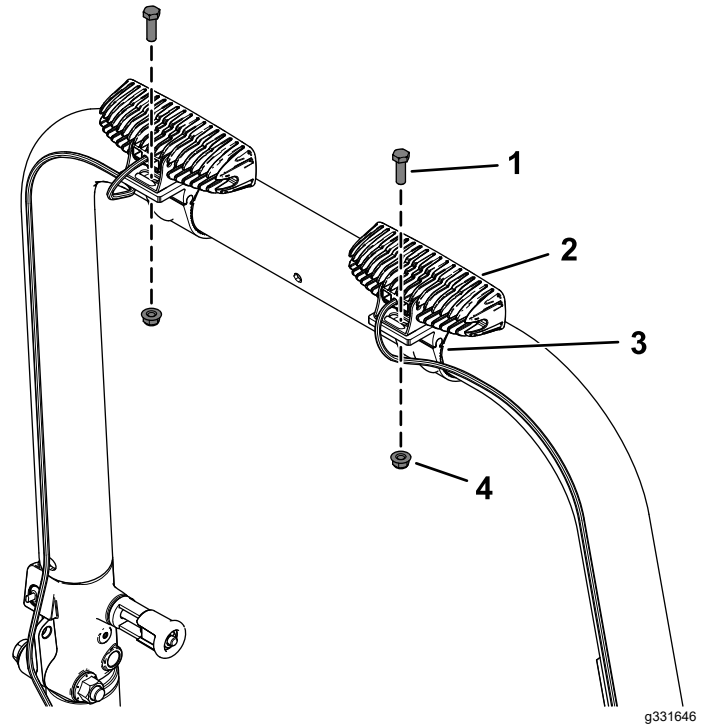
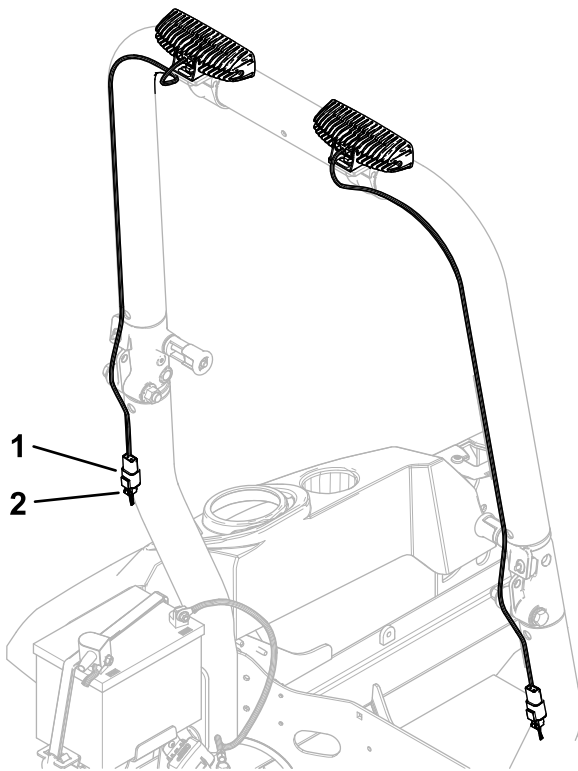


Figure 2

1. Hex-head screw (5/16 x 1 inch)
2. LED light
3. Tube clamp
4. Locknut (5/16 inch)

- Connect the 2 LED light wire-harness connectors to the main light harness (Figure 3).



g331645

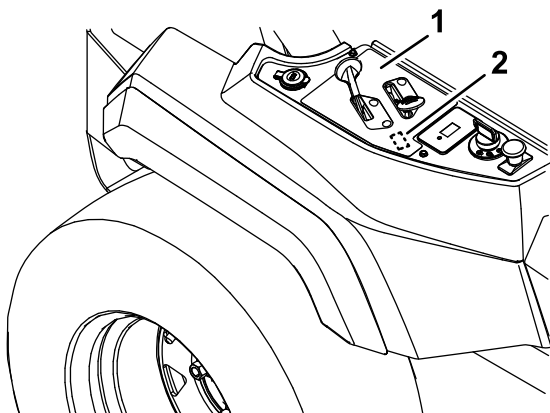
Figure 3

- LED light wire-harness connector
- Main light harness connector

- Remove and retain the 2 screws that secure the control panel to the right fender.

Gently lift the panel and turn it over.

- Using the control panel as a guide, carefully cut out the switch opening in the throttle/choke decal (Figure 4).



G035547

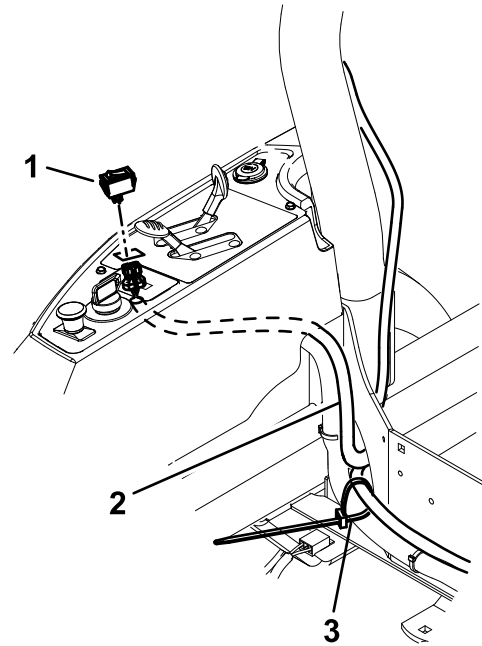
g035547

Figure 4

- Throttle/choke decal
- Cut out here.

- Separate the light switch from the wire harness.
- Route the light harness under the ROPS mounting frame and pass the wires through the rectangular cutout on the control panel (Figure 5).
- Place the light switch on the top side of the control panel and connect it to the light wire harness (Figure 5).

Ensure that the connectors are fully inserted onto the terminals. Carefully snap the switch into the cutout.



g331644

Figure 5

- Switch
- Light wire harness
- Cable tie

- Secure the control panel to right fender using the previously removed screws.
- Loosely secure the light harness to the main harness using cable ties (Figure 5).
- Remove and retain the plug from the accessory connector on the machine harness. Connect the accessory connector to the light harness and secure the 2 harnesses using cable ties.

13. Coil the excess wire as necessary and use the remaining cable ties to secure the light harness to the machine (Figure 6).

Note: Ensure that the you can lower, raise, and lock the roll bar into place without pinching or damaging the wire harness.

Note: Ensure that cable ties do not cover ROPS decals.

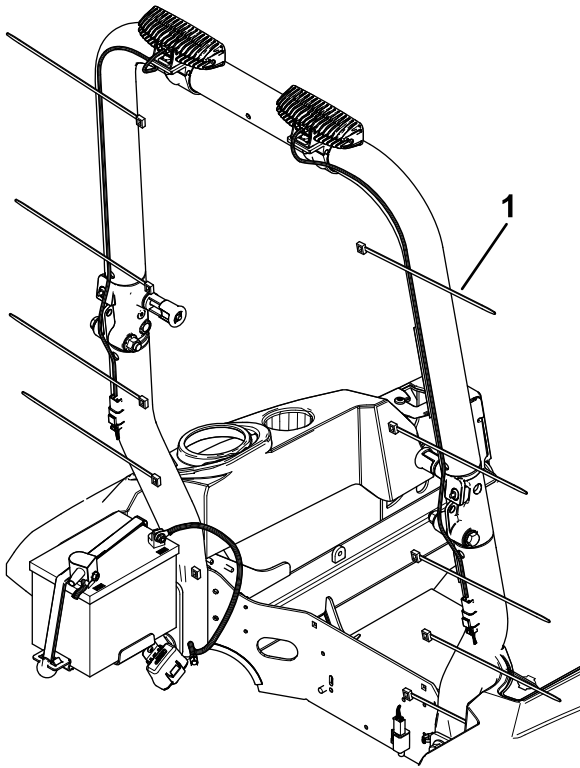


Figure 6

g331643

1. Cable tie
-

Installing the Light Kit

For Machines with a Square Roll Bar

1. Slide or tip the seat forward.
2. Secure the 2 light-mount plates to the roll bar using 2 U-bolts and 2 locknuts (3/8 inch) in the desired location (Figure 7).

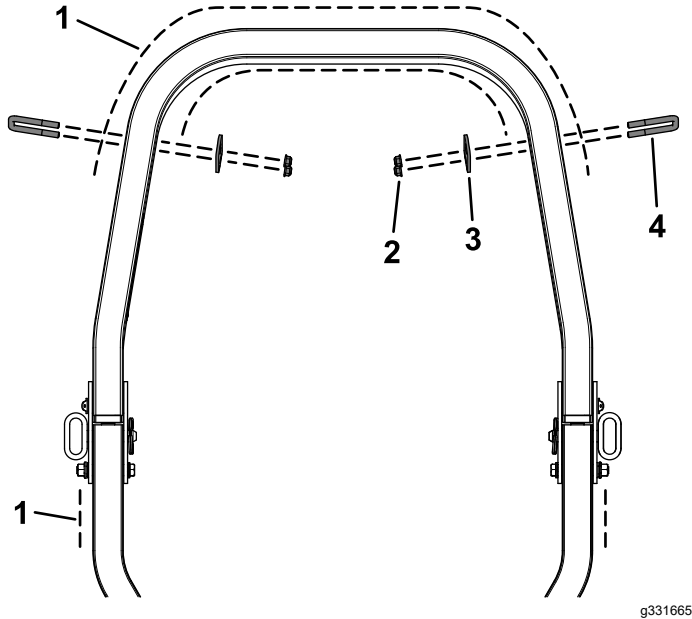


Figure 7

- | | |
|-----------------------|----------------------|
| 1. Mounting locations | 3. Light-mount plate |
| 2. Locknut (3/8 inch) | 4. U-bolt |

3. Secure the 2 LED lights to the 2 light-mount plates using the 2 hex-head screw (5/16 x 1 inch) and 2 locknuts (5/16 inch) as shown in Figure 8.

Note: Do not install the LED lights where they cover ROPS decals.

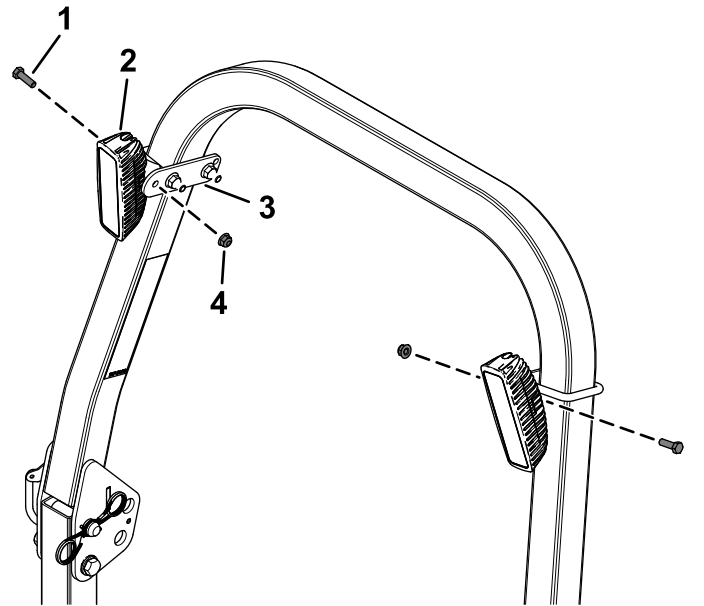


Figure 8

- | | |
|-----------------------------------|------------------------|
| 1. Hex-head screw (5/16 x 1 inch) | 3. Light-mount plate |
| 2. LED light | 4. Locknut (5/16 inch) |

4. Connect the 2 LED light wire-harness connectors to the main light harness (Figure 3).
5. Remove and retain the 2 screws that secure the control panel to the right fender.

Gently lift the panel and turn it over.

6. Using the control panel as a guide, carefully cut out the switch opening in the throttle/choke decal (Figure 4).
7. Separate the light switch from the wire harness.
8. Route the light harness under the ROPS mounting frame and pass the wires through the rectangular cutout on the control panel (Figure 5).
9. Place the light switch on the top side of the control panel and connect it to the light wire harness (Figure 5).

Ensure that the connectors are fully inserted onto the terminals. Carefully snap the switch into the cutout.

10. Secure the control panel to right fender using the previously removed screws.
11. Loosely secure the light harness to the main harness using cable ties (Figure 5).

12. Remove and retain the plug from the accessory connector on the machine harness. Connect the accessory connector to the light harness and secure the 2 harnesses using cable ties.
13. Coil the excess wire as necessary and use the remaining cable ties to secure the light harness to the machine ([Figure 6](#)).

Note: Ensure that the you can lower, raise, and lock the roll bar into place without pinching or damaging the wire harness.

Note: Ensure that cable ties do not cover ROPS decals.

Notes:

