



**Count on it.**

**Parts Catalog**

**48cm 60V Super Recycler®**

Model No. 21848—Serial No. 40000000 and Up



# Ordering Replacement Parts

To order replacement parts, please supply the part number, the quantity, and the description of each part desired.

## Understanding Reference Numbers

Each identified part in an illustration has a reference number. The reference number for a part also appears in the parts list, along with other information about the part.

This catalog uses two special reference number formats, one to indicate parts in a service assembly and another to indicate the quantity of a given part in an illustration.

## Service Assembly Reference Numbers

Parts in service assemblies have reference numbers in the form a:b. The a represents the reference number of the entire service assembly and the b represents a sequential number unique to each part within the service assembly.

For example, a wheel assembly might be identified by reference number 6, the tire by 6:1, the valve by 6:2, and the wheel by 6:3. When you order the assembly identified by reference number 6, you receive all parts identified by reference numbers 6:1, 6:2, and 6:3. However, you may also order any part individually. Reference numbers of this type appear in illustration and in parts lists.

## Reference Numbers Indicating Quantity

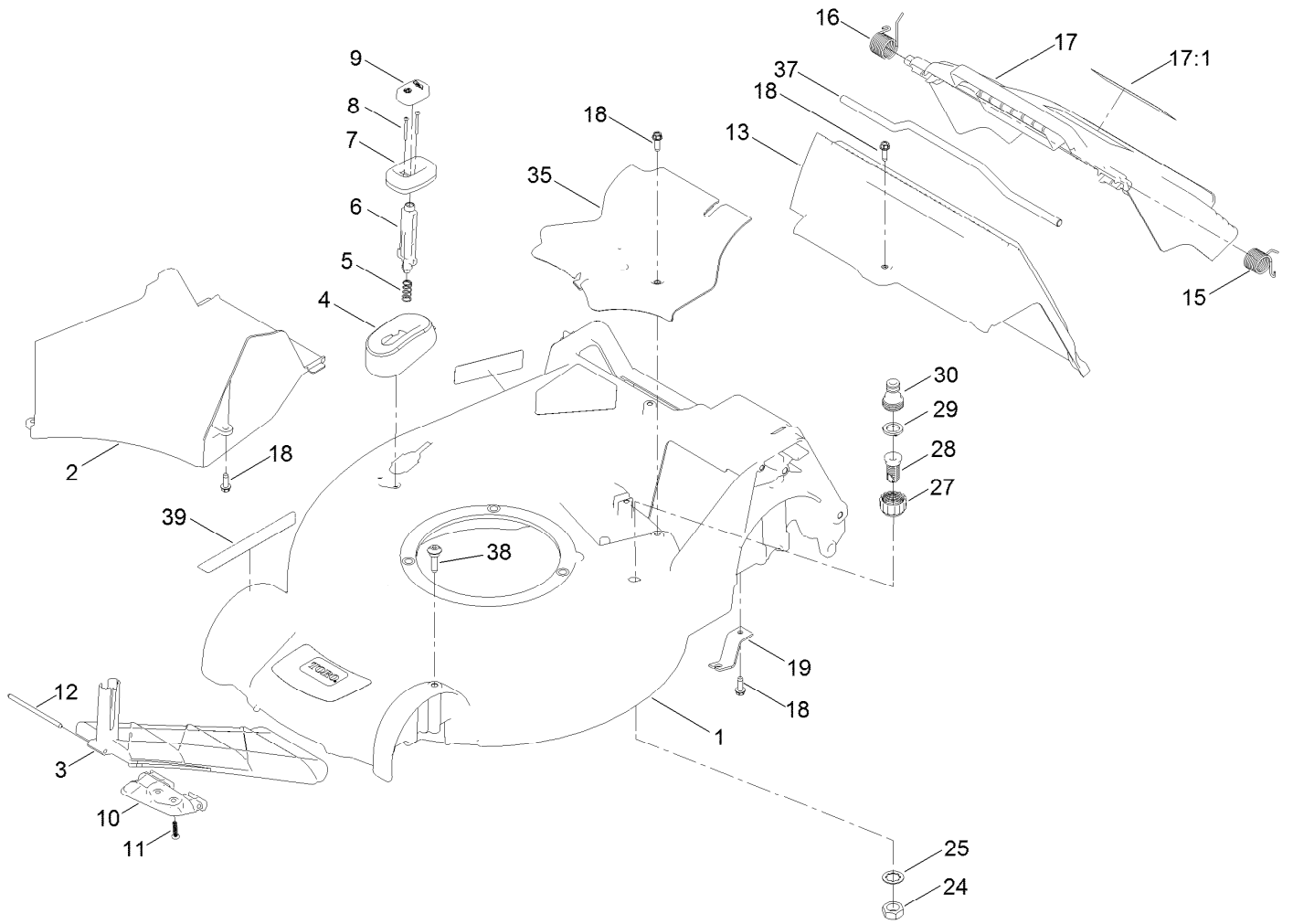
In an illustration, if a reference number indicates more than one part, the reference number has the form nX y. The n represents the quantity of the part, the X is the multiplication symbol, and the y represents the reference number.

For example, in an illustration, the reference number 2X 37 means that two of the parts identified by reference number 37 are indicated.

# Contents

Housing Assembly .....	4
Housing Decal Assembly No. 117-4093 .....	6
Bag and Frame Assembly .....	8
Engine and Blade Assembly .....	10
Motor Module Assembly No. 140-4213 .....	12
Motor Module Assembly No. 140-4213 Upper Shroud Assembly .....	14
Traction Drive Assembly .....	16
Transmission Bracket Assembly .....	18
Handle Assembly .....	20
Starter Switch Assembly .....	22
Attachments and Accessories .....	24

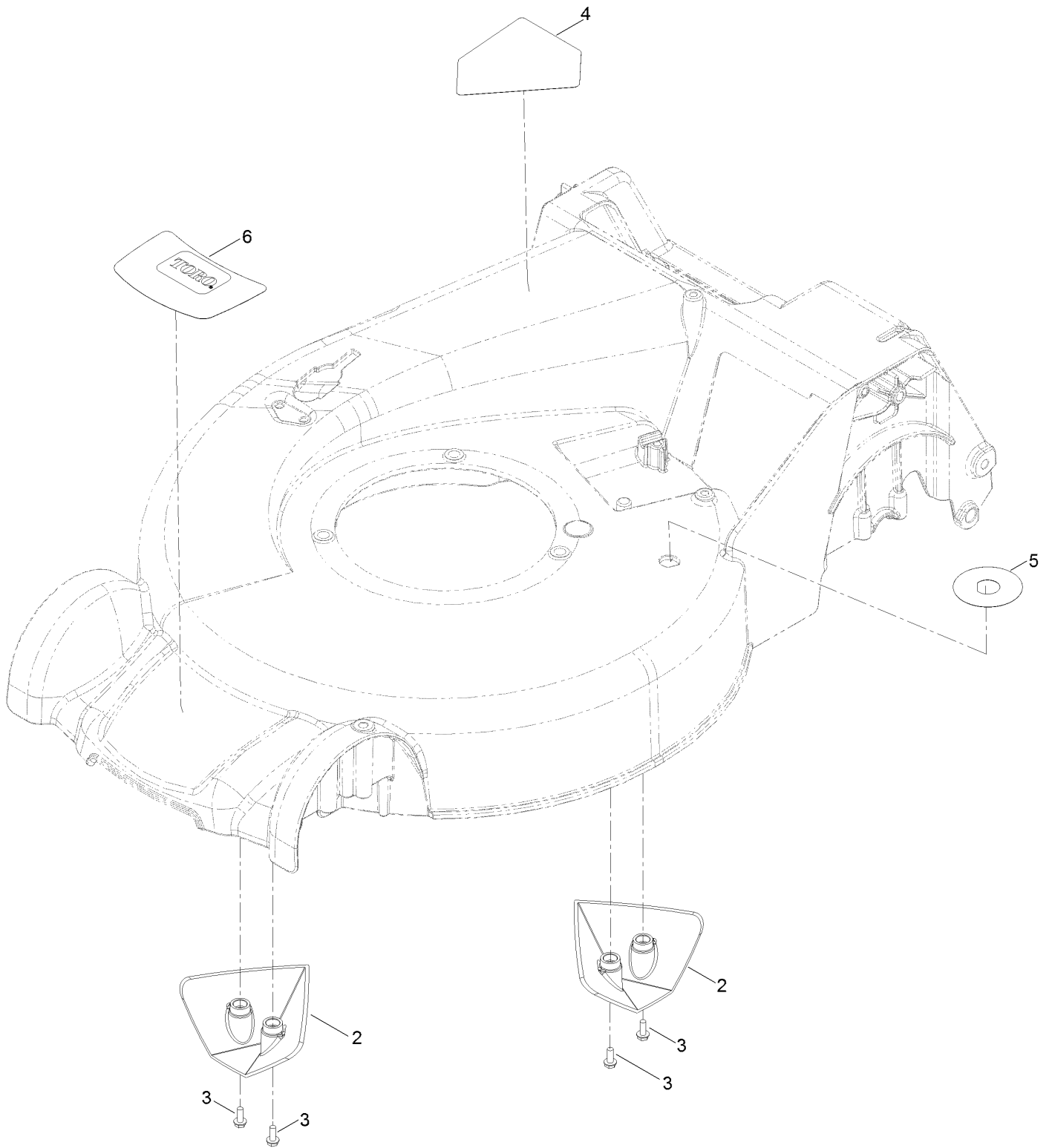
# Housing Assembly



## Housing Assembly (continued)

<i>Ref.</i>	<i>Part Number</i>	<i>Qty.</i>	<i>Description</i>	<i>Ref.</i>	<i>Part Number</i>	<i>Qty.</i>	<i>Description</i>
1	117-4093	1	Housing ASM	17	117-4085	1	Rear Door ASM
2	117-4063	1	Ramp-Discharge	17:1	131-4514	1	Decal-Warning
3	117-4064	1	Door-Recycle	18	49-2040	5	Screw-HWHTF
4	117-4065	1	Cover-Door, Recycle	19	138-3230	1	Bracket-Traction Cable
5	117-1031	1	Spring-Compression	24	3218-6	1	Nut-Jam
6	110-7129	1	Latch-Recycle	25	139-1721	1	Washer-Lock, Int Tooth
7	110-7136	1	Housing-Knob	27	112-6401	1	Coupling-Hose, Washout Port
8	110-7143	2	Screw-Plastic	28	112-6400	1	Port-Washout
9	119-2254	1	Knob-Recycle	29	112-6438	1	Washer-Seal, Washout Port
10	119-2262	1	Hinge-Door, Recycle	30	112-6437	1	Adapter-Connect, Quick
11	120-9676	2	Screw-Plastite	35	117-4062	1	Cover-Belt
12	119-2263	1	Pin-Hinge	37	117-9378	1	Rod-Deflector
13	114-2668	1	Chute	38	139-1693	1	Screw-Shoulder, BHTF
15	115-2859	1	Spring-Torsion	39	119-2283	1	Decal-HOC
16	114-7924	1	Spring-Torsion				

# Housing Decal Assembly No. 117-4093

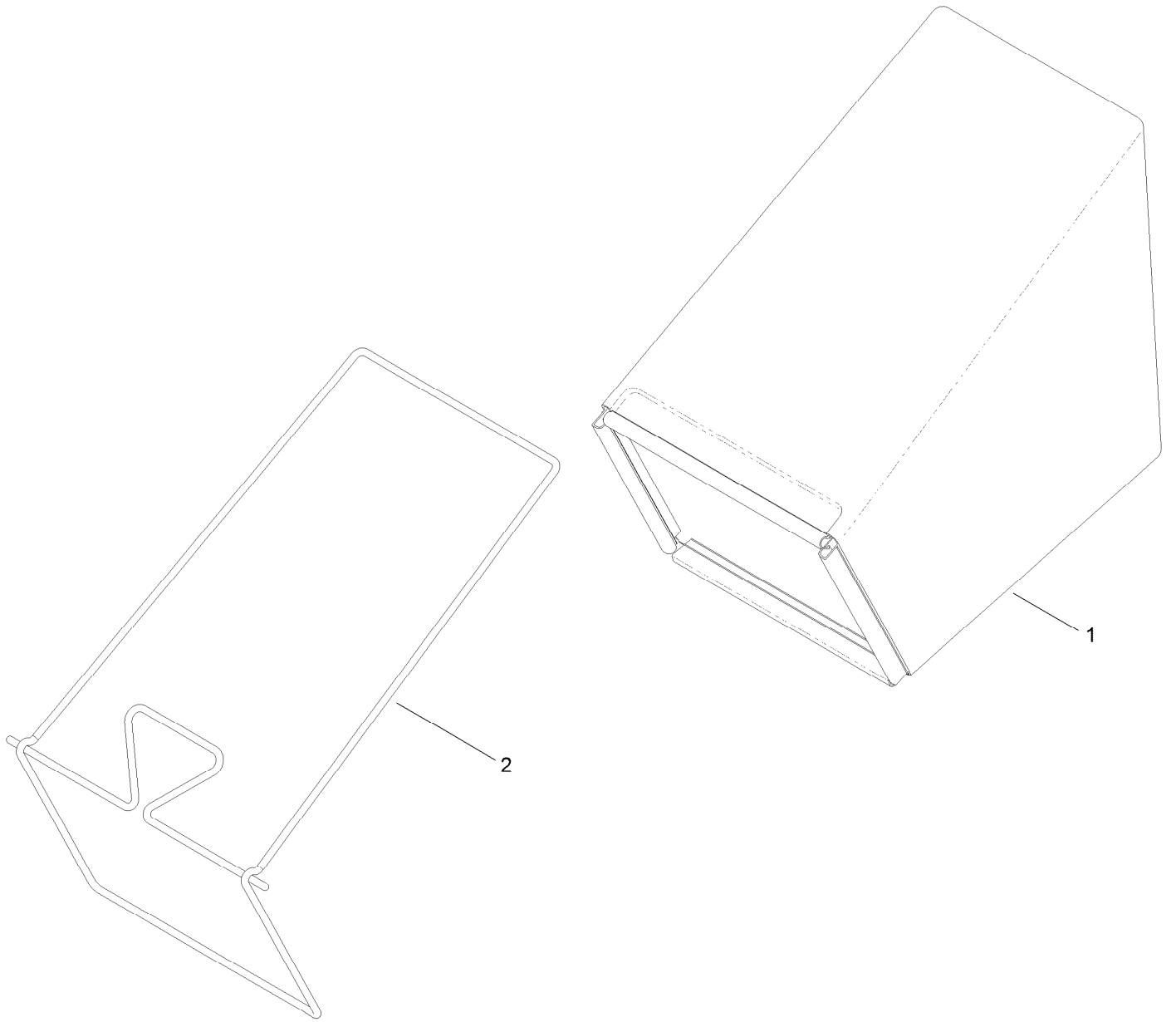


# Housing Decal Assembly No. 117-4093 (continued)

<i>Ref.</i>	<i>Part Number</i>	<i>Qty.</i>	<i>Description</i>
2	99-6485	2	Kicker-Front
3	32144-1	4	Screw-Taptite
4	112-8760	1	Decal-Danger

<i>Ref.</i>	<i>Part Number</i>	<i>Qty.</i>	<i>Description</i>
5	137-9196	1	Decal-Quick Wash
6	120-3908	1	Decal-Deck, Super Recycler

# Bag and Frame Assembly

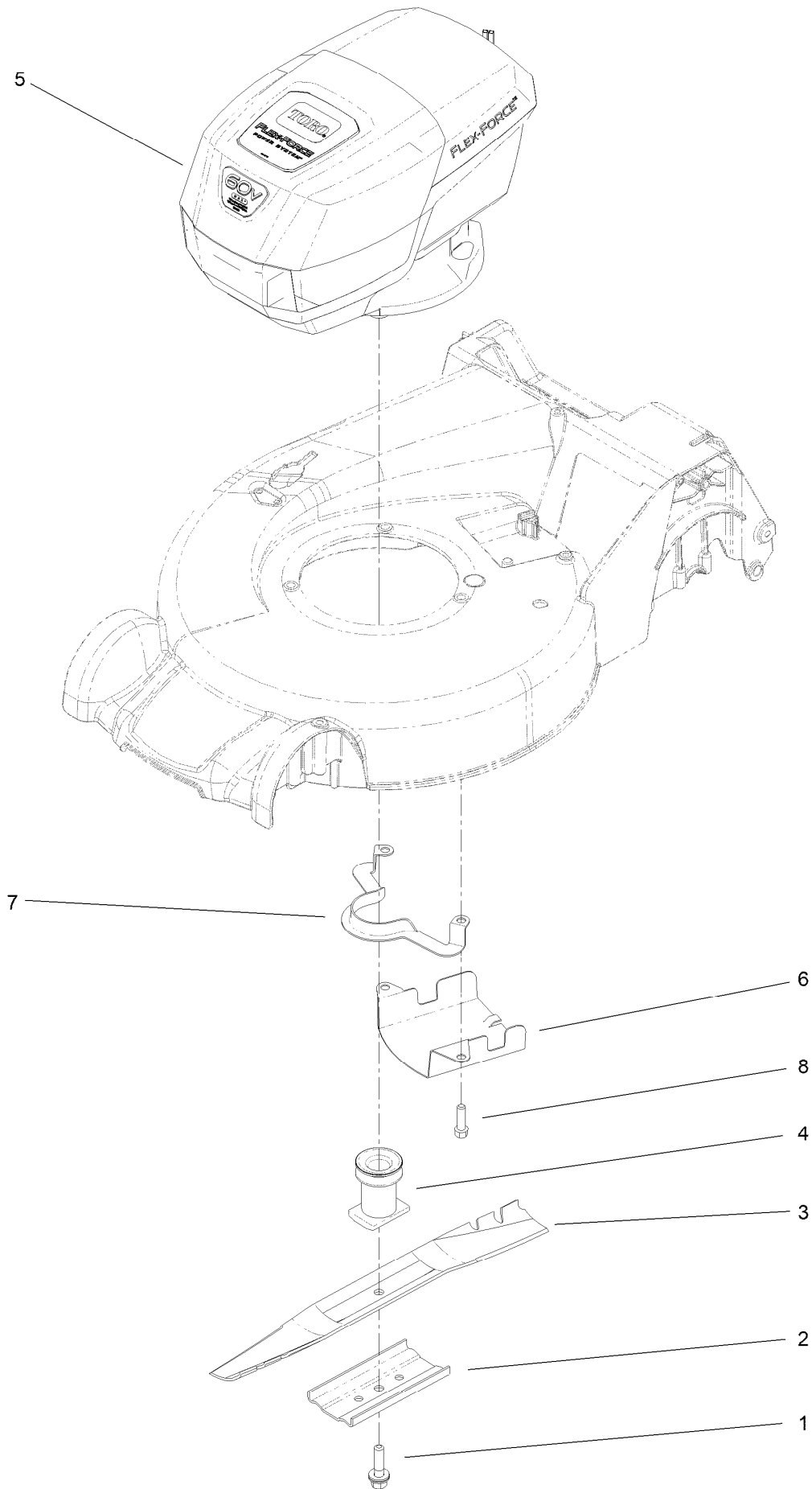




## Bag and Frame Assembly (continued)

<i>Ref.</i>	<i>Part Number</i>	<i>Qty.</i>	<i>Description</i>
1	117-9365	1	Grass Bag ASM
2	117-9363-03	1	Frame-Bag

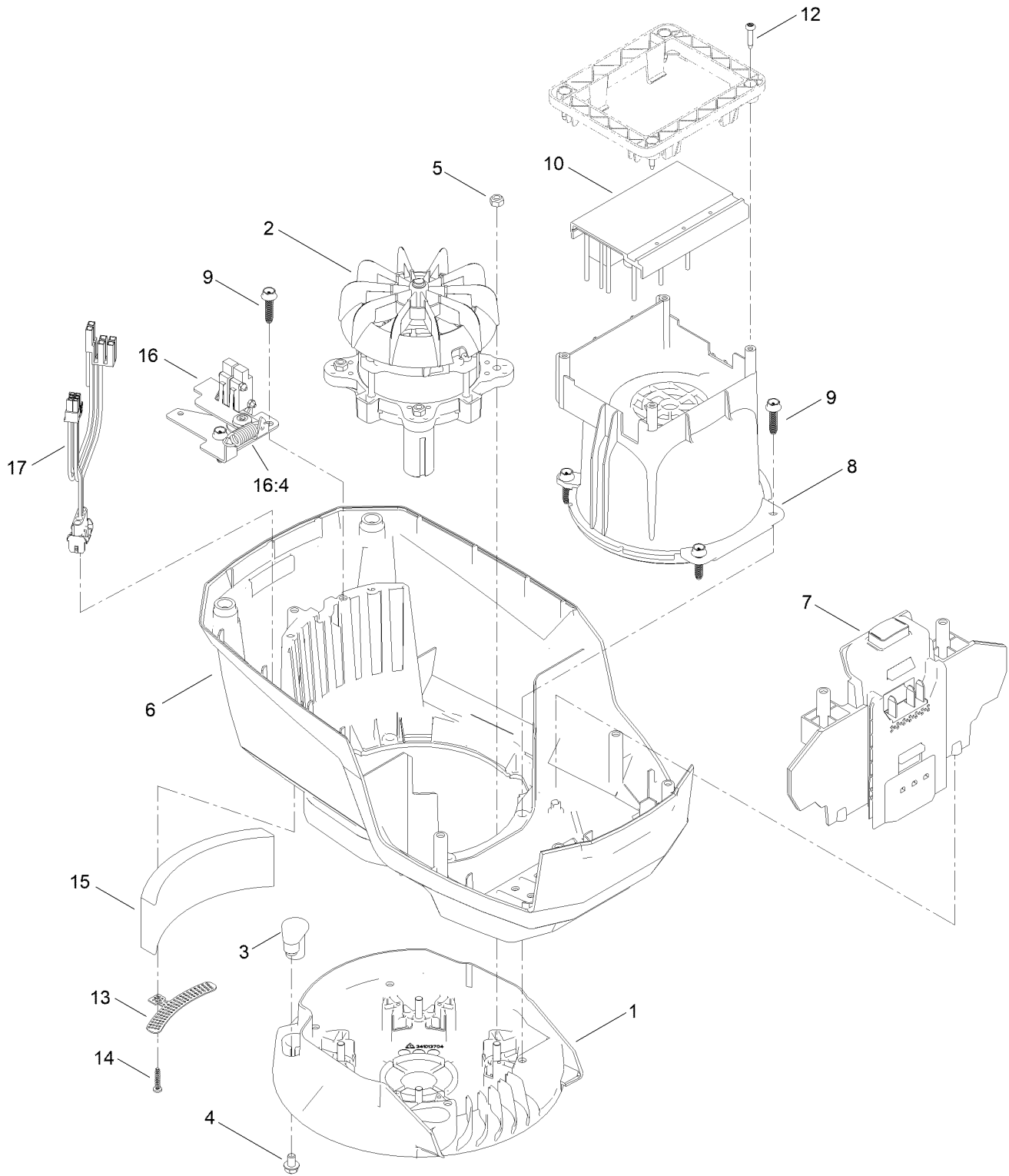
# Engine and Blade Assembly



## Engine and Blade Assembly (continued)

<i>Ref.</i>	<i>Part Number</i>	<i>Qty.</i>	<i>Description</i>	<i>Ref.</i>	<i>Part Number</i>	<i>Qty.</i>	<i>Description</i>
1	125-2466	1	Bolt-Blade	5	140-4213	1	Motor Module
2	108-3766-03	1	Support-Blade	6	107-7489-03	1	Shield-Grass
3	110-7080	1	Blade	7	108-8110-03	1	Guide-Belt
4	139-1816	1	Driver-Blade	8	92-1648	3	Screw-Mount, Engine

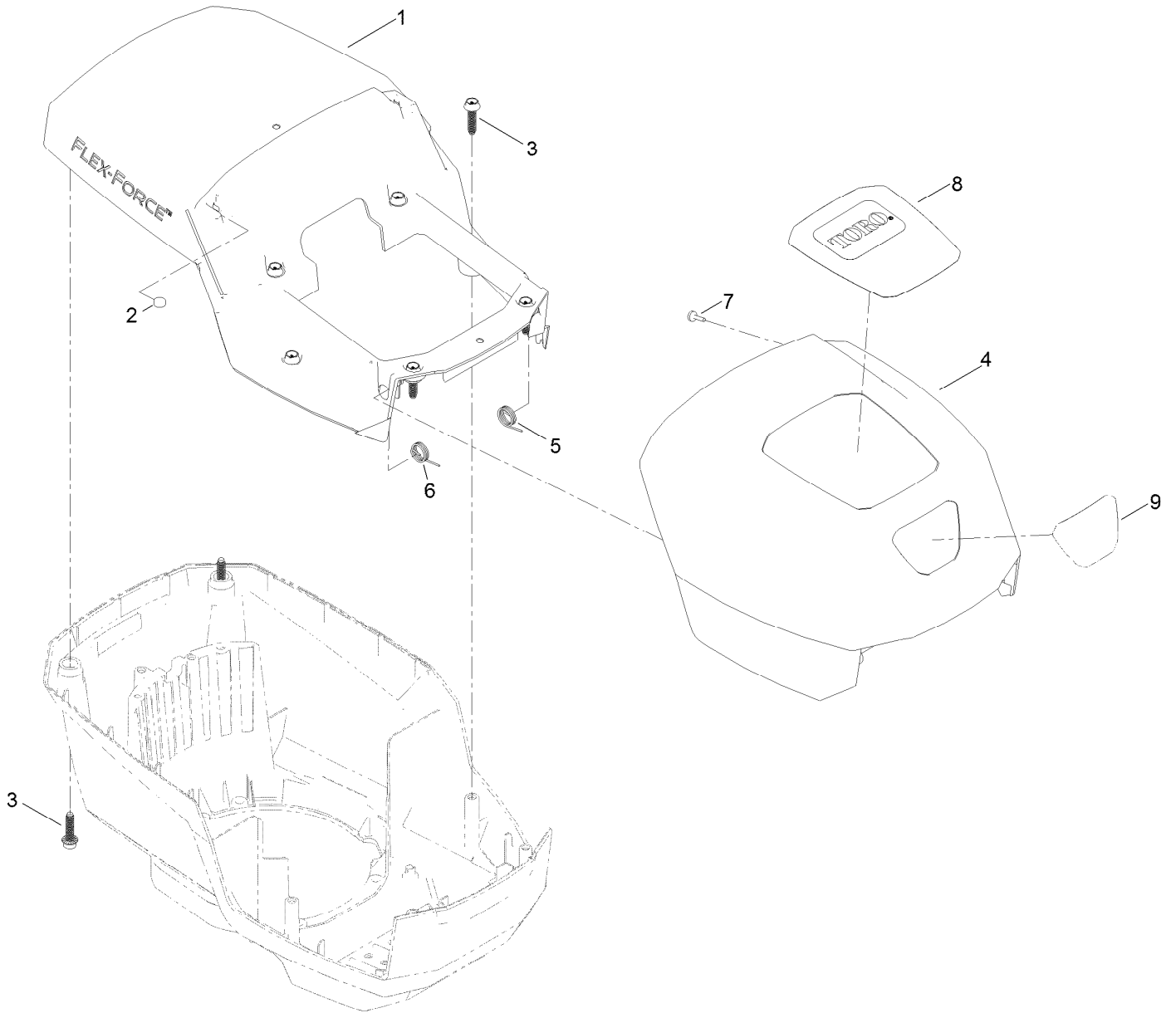
# Motor Module Assembly No. 140-4213



## Motor Module Assembly No. 140-4213 (continued)

<i>Ref.</i>	<i>Part Number</i>	<i>Qty.</i>	<i>Description</i>	<i>Ref.</i>	<i>Part Number</i>	<i>Qty.</i>	<i>Description</i>
1	139-6628	1	Base-Mount, Motor	10	134-5078	1	Controller-Motor, 60V [2-Sp]
2	138-6661	1	Motor, 60 Volt	12	139-6642	4	Screw
3	131-9732	3	Insert-Mount, Motor	13	139-6635	1	Bracket-Foam
4	137-4795	3	Screw	14	138-3273	1	Screw-Plastic, PPH
5	115-7373	4	Nut-Lock	15	139-6636	1	Foam
6	139-6631	1	Shroud-Lower	16	133-1918	1	Bail Switch ASM
7	139-6632	1	Battery Reciever ASM	16:4	104-6478	1	Spring-Extension
8	139-6633	1	Shroud-Motor	17	139-6637	1	Harness-Wire
9	130-6658	6	Screw-Flange, Plastic				

# Motor Module Assembly No. 140-4213 Upper Shroud Assembly

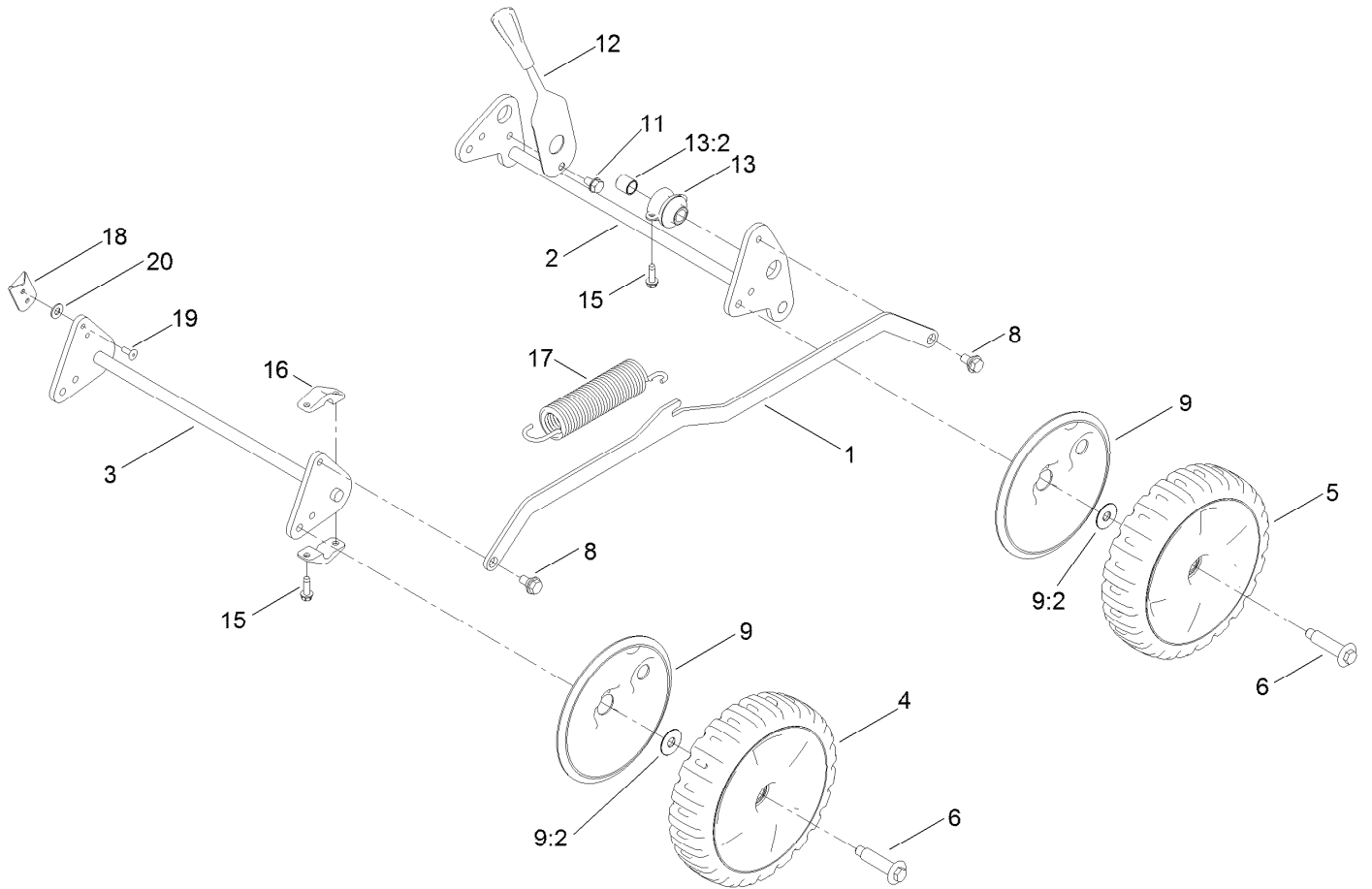


# Motor Module Assembly No. 140-4213

## Upper Shroud Assembly (continued)

<i>Ref.</i>	<i>Part Number</i>	<i>Qty.</i>	<i>Description</i>	<i>Ref.</i>	<i>Part Number</i>	<i>Qty.</i>	<i>Description</i>
1	139-6638	1	Shroud-Upper	6	139-6641	1	Spring-RH
2	114-5896	2	Magnet	7	95-4234	2	Screw-PPH
3	130-6658	8	Screw-Flange, Plastic	8	136-9118	1	Decal-Hood, Top
4	139-6639	1	Hood	9	136-9119	1	Decal-Hood, Front
5	139-6640	1	Spring-LH				

# Traction Drive Assembly

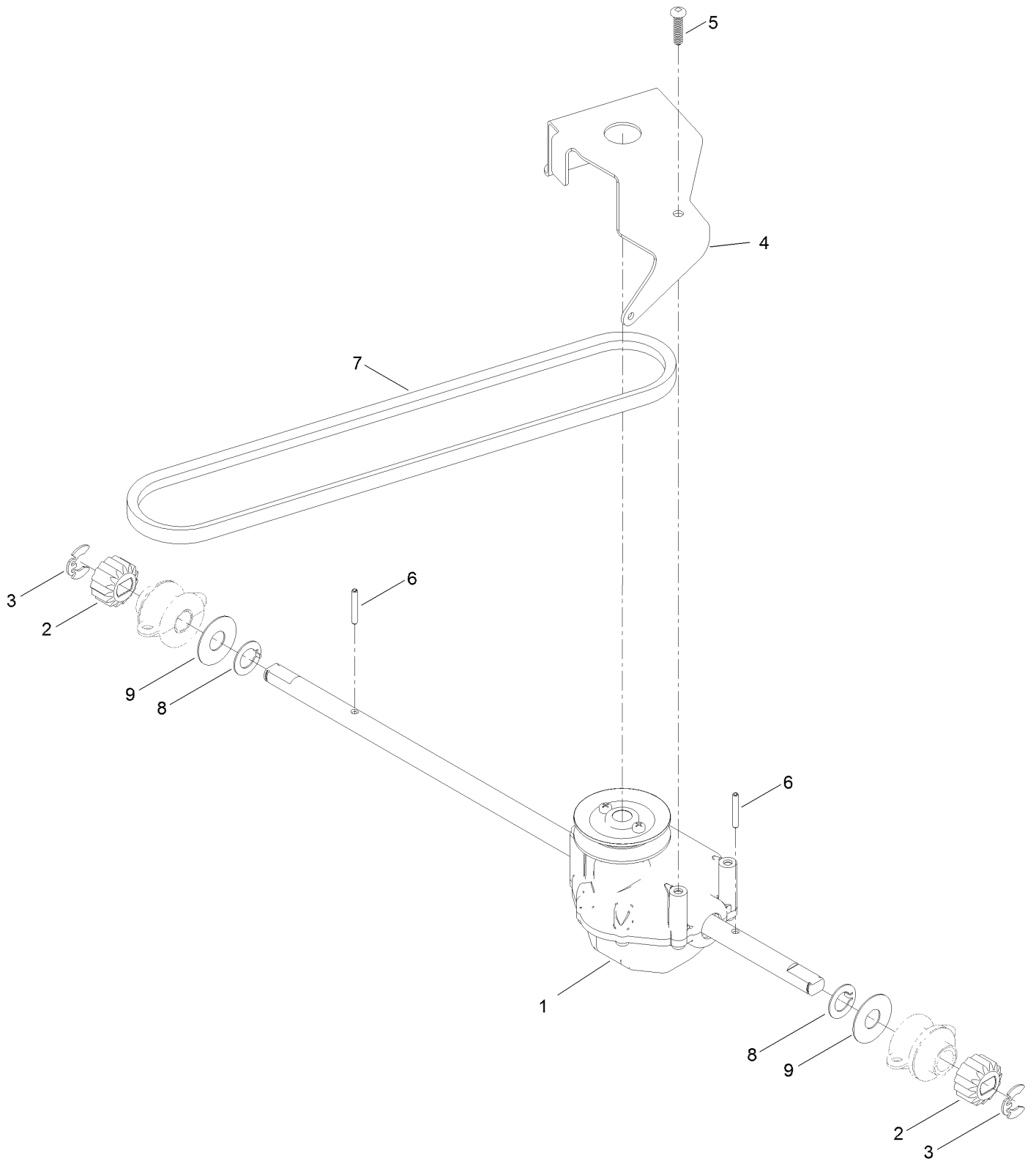




## Traction Drive Assembly (continued)

<i>Ref.</i>	<i>Part Number</i>	<i>Qty.</i>	<i>Description</i>	<i>Ref.</i>	<i>Part Number</i>	<i>Qty.</i>	<i>Description</i>
1	117-4066-01	1	Bar-Cross, HOC	11	139-1710	1	Screw-Thd Cut, HWH
2	120-0196-03	1	Bar-Pivot, Rear	12	117-4084	1	Handle-Lift Assist
3	120-3902-03	1	Bar-Pivot, Front	13	119-2278	2	Bushing ASM
4	117-4082	2	8 Inch Wheel ASM	13:2	27-6250	1	Bushing
5	117-4083	2	8 Inch Wheel And Gear ASM	15	49-2040	8	Screw-HWHTF
6	614650	4	Bolt-Shoulder	16	100-1500	4	Mount-Axle, Front
8	27-0411	2	Screw-Shoulder	17	119-2265	1	Spring-Extension
9	117-4088	4	Wheel Cover ASM	18	138-3231	1	Indicator-HOC
9:2	614426	1	Washer-Stepped	19	114439	2	Rivet-Blind
				20	139-1699	2	Washer-Flat

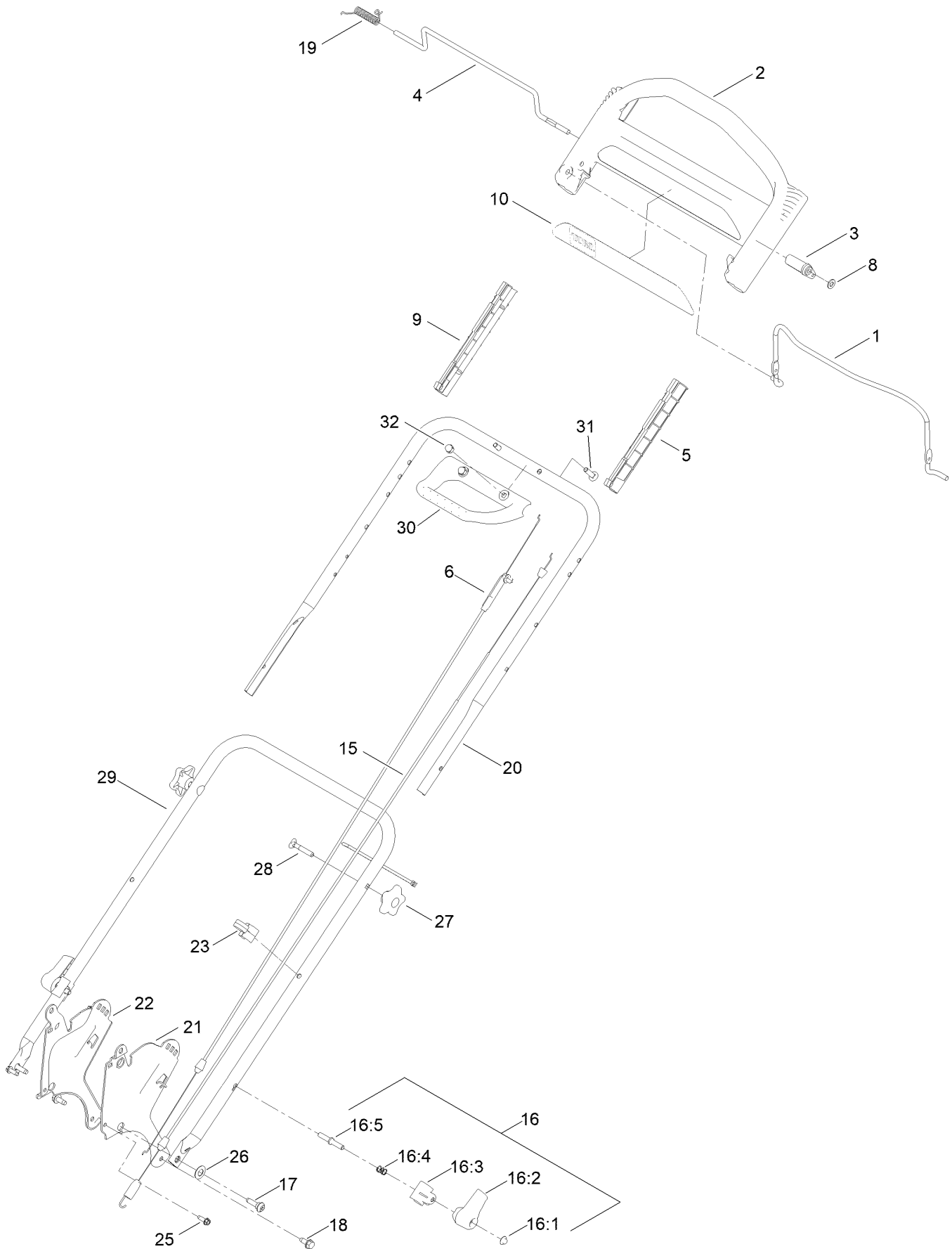
# Transmission Bracket Assembly



## Transmission Bracket Assembly (continued)

<i>Ref.</i>	<i>Part Number</i>	<i>Qty.</i>	<i>Description</i>	<i>Ref.</i>	<i>Part Number</i>	<i>Qty.</i>	<i>Description</i>
1	117-4086	1	Transmission-Gearbox	6	110-7192	2	Pin-Roll
2	131-5399	2	Gear-Pinion, 15T	7	110-9429	1	V-Belt
3	65-2720	2	Ring-Retaining, Clip	8	112-3911	2	Washer-Thrust, Keyed
4	114-7977-03	1	Bracket-Transmission	9	110-7179	2	Washer-Plain
5	120-9676	3	Screw-Plastite				

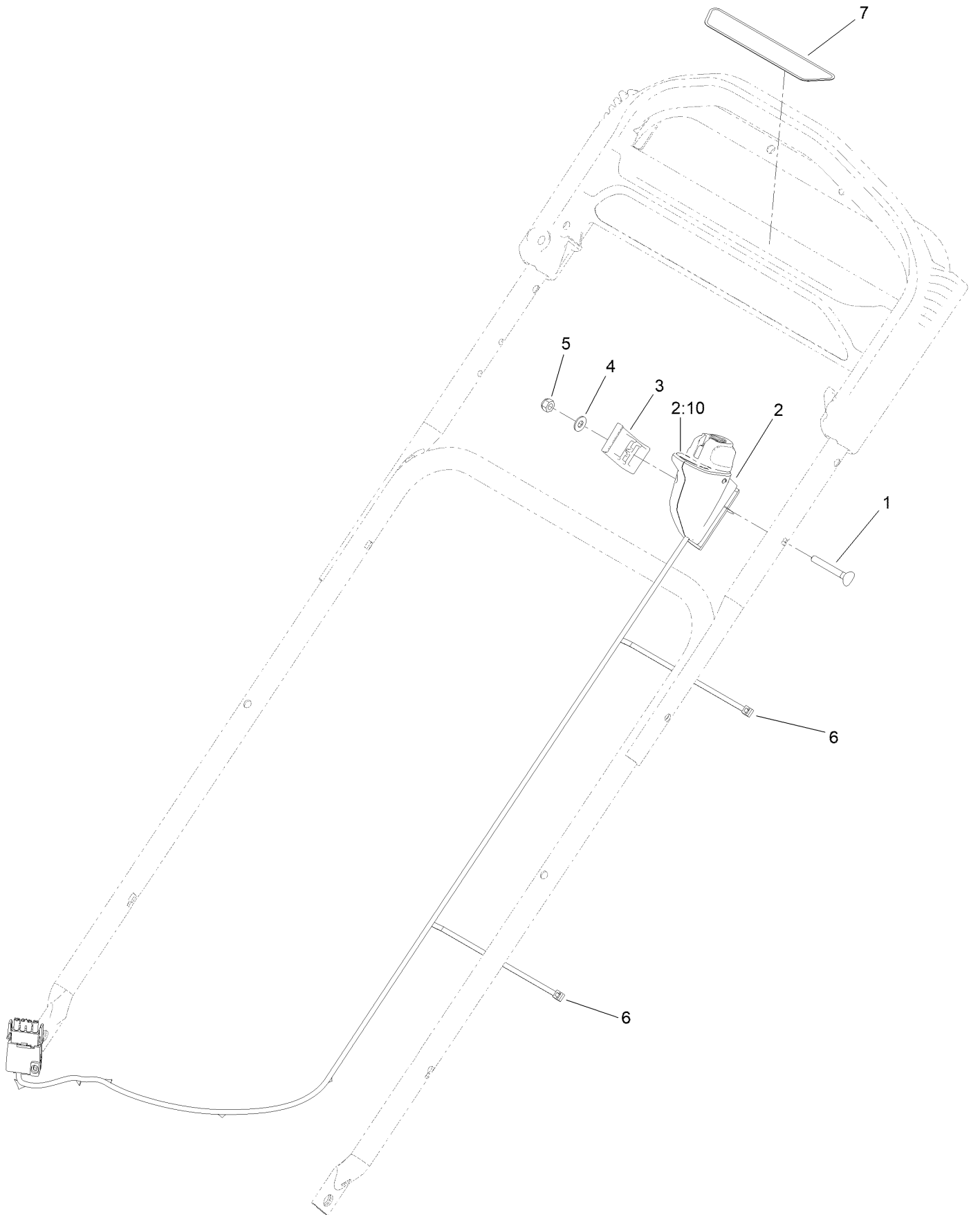
# Handle Assembly



## Handle Assembly (continued)

<i>Ref.</i>	<i>Part Number</i>	<i>Qty.</i>	<i>Description</i>	<i>Ref.</i>	<i>Part Number</i>	<i>Qty.</i>	<i>Description</i>
1	131-0880-03	1	Bail-Brake	17	139-1693	2	Screw-Shoulder, BHTF
2	104-8678	1	Handle-Control	18	32144-70	2	Screw-HWHTF
3	99-1589	1	Lever-Traction	19	136-7166	1	Spring-Torsion
4	136-7150	1	Bar-Control, Traction	20	132-4484-05	1	Handle-Upper
5	105-6842	1	Guide-LH	21	114-2671-03	1	Bracket-Handle, LH
6	108-8157	1	Cable-Brake	22	114-2672-03	1	Bracket-Handle, RH
8	120-9683	1	Washer-Plain	23	114-7988	1	Guide-Cable
9	105-6841	1	Guide-RH	25	49-2040	2	Screw-HWHTF
10	120-3911	1	Decal-Handle	26	112-9972	2	Washer-Spring, Conical
15	117-9389	1	Cable-Traction	27	117-5976	2	Knob-Handle
16	138-3249	2	Quick Release ASM	28	137-3107	2	Screw-Handle
16:1	32112-11	1	Nut-Push	29	117-9380-05	1	Handle-Lower
16:2	138-3248	1	Lever-Release	30	131-0847	1	Handle-Assist, Traction
16:3	138-3253	1	Anchor-Spring	31	139-1702	2	Bolt-Carriage
16:4	115-2858	1	Spring-Compression	32	137-4808	2	Nut-Acorn
16:5	138-3243	1	Rod-Release				

# Starter Switch Assembly



## Starter Switch Assembly (continued)

<i>Ref.</i>	<i>Part Number</i>	<i>Qty.</i>	<i>Description</i>	<i>Ref.</i>	<i>Part Number</i>	<i>Qty.</i>	<i>Description</i>
1	137-3109	1	Bolt-CARR	4	139-1699	1	Washer-Flat
2	140-4207	1	Starter Switch ASM	5	137-3094	1	Nut-Hex
2:10	134-4691	1	Decal - Control Speed	6	614249	2	Tie-Cable
3	136-7029	1	Clamp-Cable	7	140-1324	1	Decal-Controls (60V, Start)

# Attachments and Accessories

## For 21848 48cm 60V Super Recycler

**Product Name**

**Model/Part**

Lawnmower Cover.....	490-7462
Plain Walk Mower Cover.....	490-7463



**Notes:**

**Notes:**

**Notes:**



**Count on it.**