



Workman® GTX Lithium Utility Vehicle

Model No. 07413TC—Serial No. 400000000 and Up

Form No. 3440-295 Rev A

Addendum

Add this procedure to the **Setup** section of your *Operator's Manual*.

1

Installing the Steering Wheel (International Models Only)

Parts needed for this procedure:

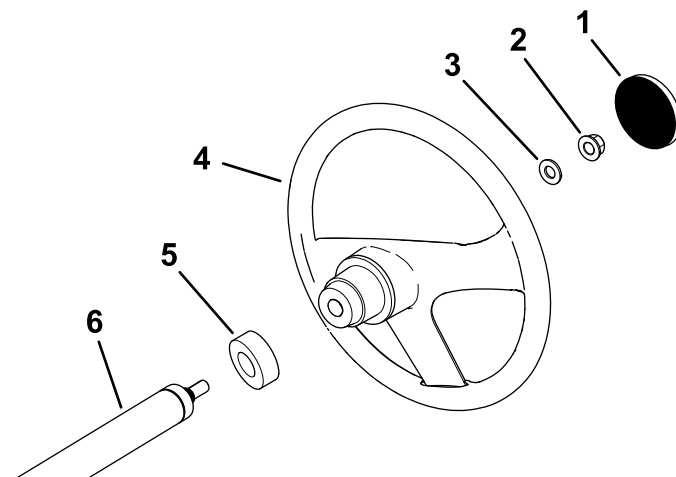
| | |
|---|----------------------|
| 1 | Steering wheel |
| 1 | Steering wheel cover |
| 1 | Washer (1/2 inch) |
| 1 | Dust cover |

Procedure

1. If the cover is installed, remove it from the hub of the steering wheel (Figure 1).
2. Remove the locknut (1/2 inch) from the steering shaft (Figure 1).
3. Slide the steering wheel, dust cover, and washer (1/2 inch) onto the steering shaft (Figure 1).

Note: With the front wheels straight, orient the steering wheel so that the smaller spoke on the steering wheel is vertical.

4. Secure the steering wheel to the shaft with the locknut (1/2 inch) and tighten it to 18 to 30 N·m (13 to 22 ft-lb).
5. Install the cover on the steering wheel (Figure 1).



g198932

Figure 1

- | | |
|-------------------------|-------------------|
| 1. Steering wheel cover | 4. Steering wheel |
| 2. Locknut (1/2 inch) | 5. Dust cover |
| 3. Washer (1/2 inch) | 6. Steering shaft |

