

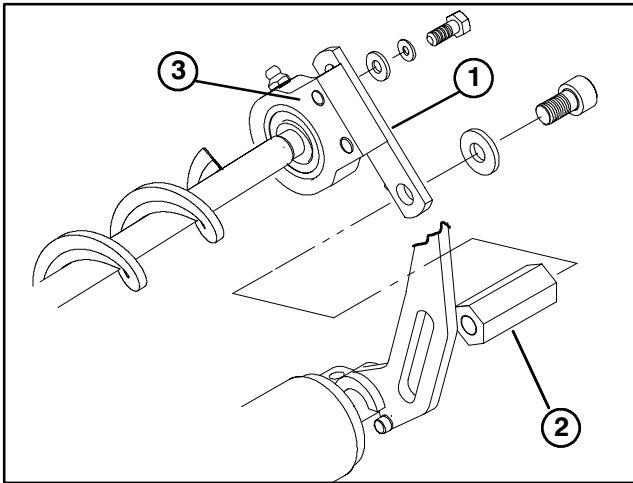


PART NO. 104-2066

INSTALLATION  
INSTRUCTIONS

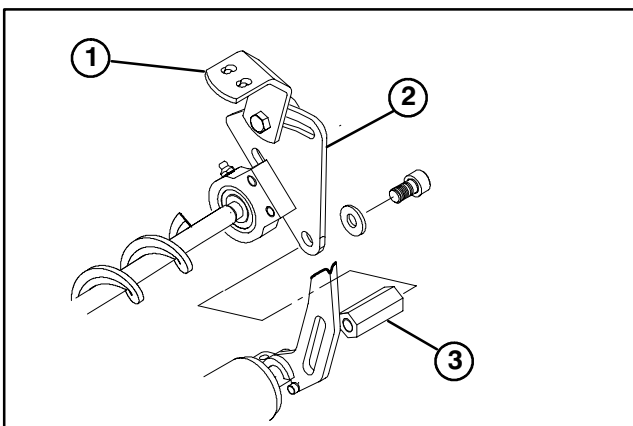
## REAR ROLLER BRUSH UPDATE KIT For Greensmaster 3200 with Groomer

1. On end of cutting unit, opposite drive belt, remove socket head screw and flat washer securing bearing adjustment plate to the hex extension (Fig. 1). Retain fasteners.
2. Remove (2) capscrews, flat washers and lockwashers securing bearing adjustment plate to the bearing housing (Fig. 1). Retain fasteners.

**Figure 1**

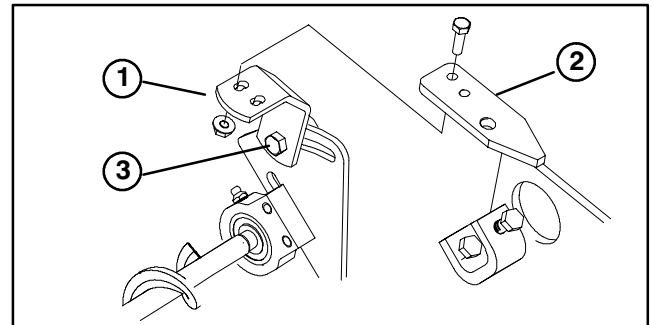
1. Bearing adjustment plate
2. Hex extension
3. Bearing housing

3. Loosely secure support bracket to bearing adjustment plate with a M8 hex head screw and flangenut as shown in figure 2.

**Figure 2**

1. Support bracket
2. Bearing adjustment plate
3. Hex extension

4. Loosely secure bearing adjustment plate to bearing housing with two previously removed, capscrews, flat washers and lockwashers as shown in figure 2.
5. Loosely secure bearing adjustment plate to the hex extension with the hex socket screw and flat washer previously removed (Fig. 1). Do not overtighten, brush must pivot freely.
6. Secure support bracket to underside of cutting unit tab with (2) M6 hex head screws and lock nuts. Tighten screws (Fig. 3).

**Figure 3**

1. Support bracket
2. Cutting unit tab
3. Cap screw & flangenut

7. Refer to Brush Kit Operator's Manual for adjustment procedures.