



Count on it.

Parts Catalog

18in Straight-Shaft Gas Trimmer

Model No. 51978—Serial No. 32000001 and Up



Ordering Replacement Parts

To order replacement parts, please supply the part number, the quantity, and the description of each part desired.

Understanding Reference Numbers

Each identified part in an illustration has a reference number. The reference number for a part also appears in the parts list, along with other information about the part.

This catalog uses two special reference number formats, one to indicate parts in a service assembly and another to indicate the quantity of a given part in an illustration.

Service Assembly Reference Numbers

Parts in service assemblies have reference numbers in the form a:b. The a represents the reference number of the entire service assembly and the b represents a sequential number unique to each part within the service assembly.

For example, a wheel assembly might be identified by reference number 6, the tire by 6:1, the valve by 6:2, and the wheel by 6:3. When you order the assembly identified by reference number 6, you receive all parts identified by reference numbers 6:1, 6:2, and 6:3. However, you may also order any part individually. Reference numbers of this type appear in illustration and in parts lists.

Reference Numbers Indicating Quantity

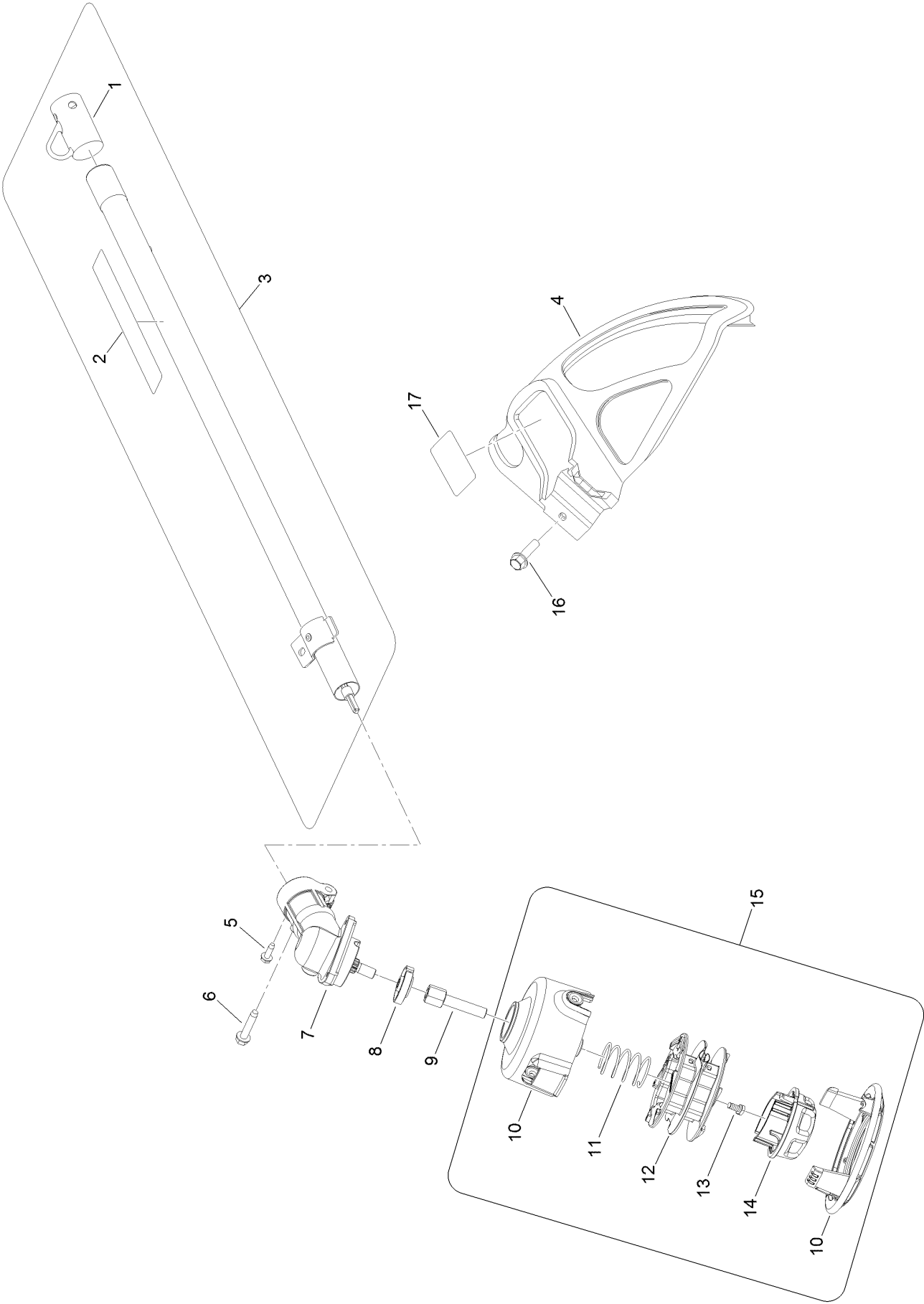
In an illustration, if a reference number indicates more than one part, the reference number has the form nX y. The n represents the quantity of the part, the X is the multiplication symbol, and the y represents the reference number.

For example, in an illustration, the reference number 2X 37 means that two of the parts identified by reference number 37 are indicated.

Contents

- Trimmer Head, Shaft and Guard Assembly 4
- Upper Shaft, Handle and Power Head Assembly 6
- Power Head Components Assembly 8
- Attachments and Accessories 10

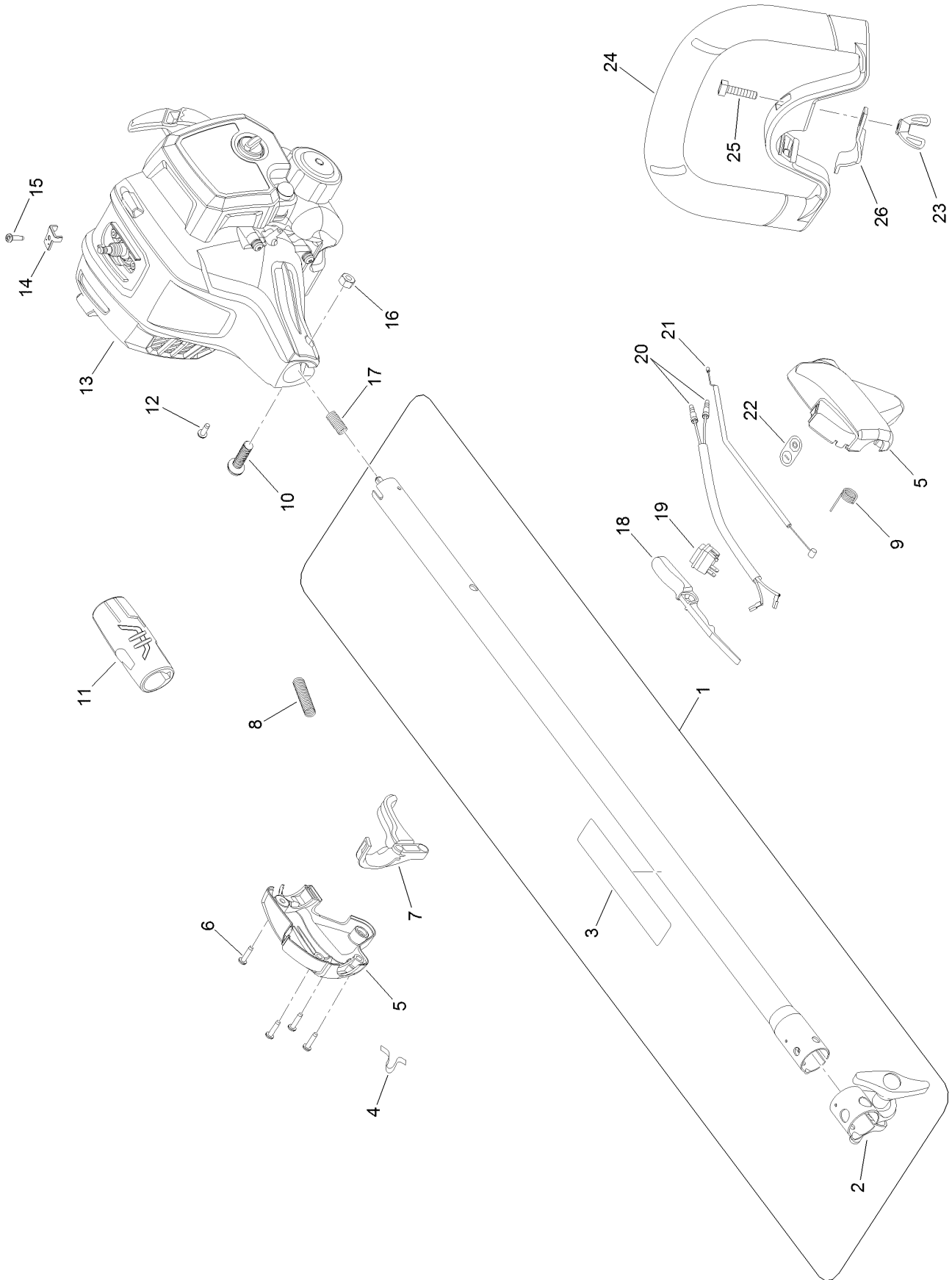
Trimmer Head, Shaft and Guard Assembly



Trimmer Head, Shaft and Guard Assembly (continued)

| <i>Ref.</i> | <i>Part Number</i> | <i>Qty.</i> | <i>Description</i> | <i>Ref.</i> | <i>Part Number</i> | <i>Qty.</i> | <i>Description</i> |
|-------------|--------------------|-------------|--------------------------------|-------------|--------------------|-------------|-----------------------|
| 1 | 519019004 | 1 | Hanger Cap | 10 | 308827003 | 1 | Housing-Stringhead |
| 2 | 940657165 | 1 | Decal-Warning | 11 | 678749001 | 1 | Spring-Compression |
| 3 | 308035059 | 1 | Shaft ASM | 12 | 308924002 | 1 | Spool |
| 4 | 308473004 | 1 | Grass Deflector ASM | 13 | 660649001 | 1 | Bolt |
| 5 | 660736001 | 1 | Screw-HWH | 14 | 518803003 | 1 | Knob-Bump |
| 6 | 660642001 | 1 | Screw | 15 | 309034005 | 1 | Spool Head ASM |
| 7 | 308210015 | 1 | Head-Gear | 16 | 660738002 | 1 | Screw-HWH |
| 8 | 678011001 | 1 | Washer-Flange | 17 | 940865002 | 1 | Decal-Grass Deflector |
| 9 | 678019004 | 1 | Adaptor-Head Shaft, Trimmer | | | | |

Upper Shaft, Handle and Power Head Assembly

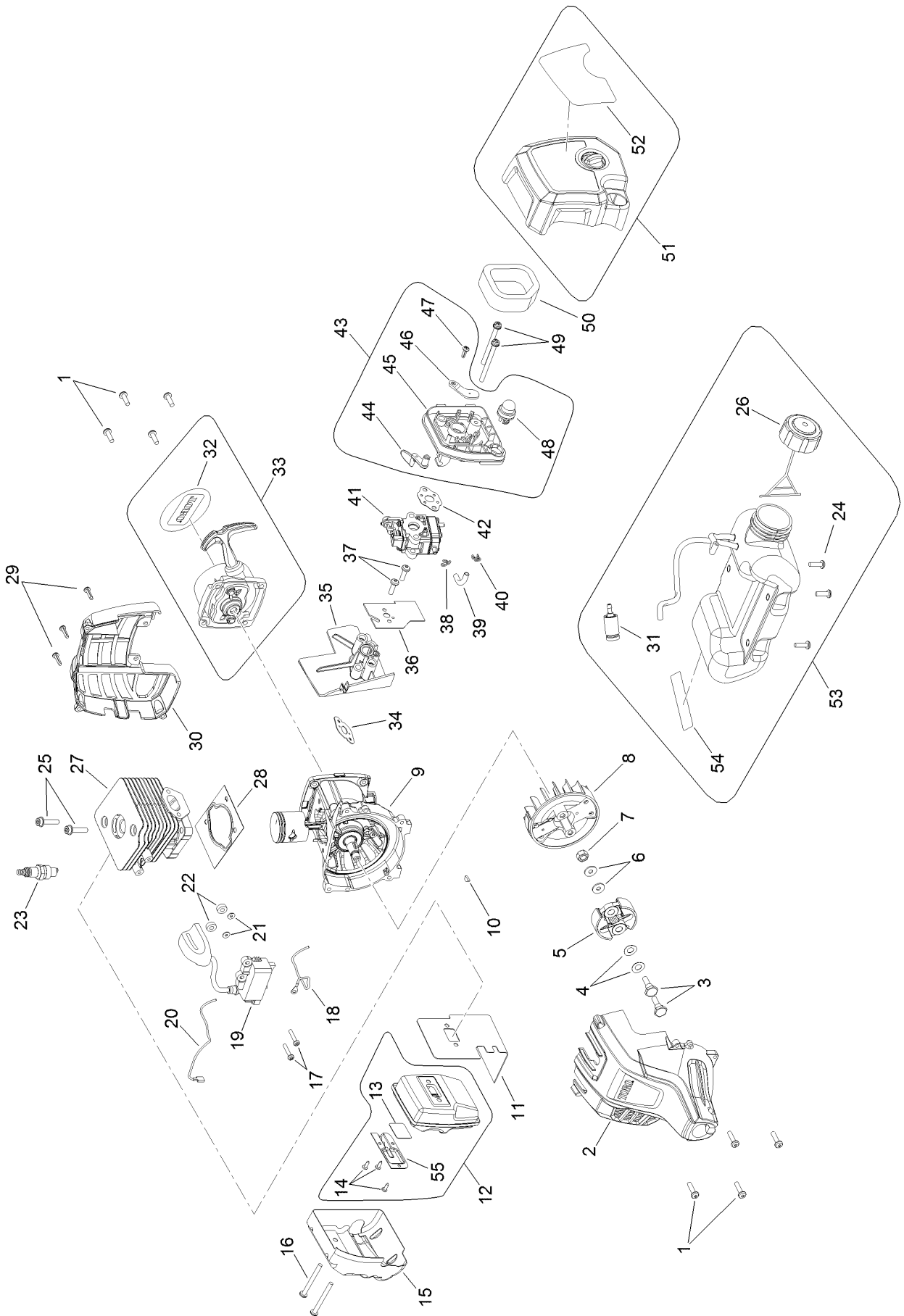


Upper Shaft, Handle and Power Head Assembly (continued)

| <i>Ref.</i> | <i>Part Number</i> | <i>Qty.</i> | <i>Description</i> | <i>Ref.</i> | <i>Part Number</i> | <i>Qty.</i> | <i>Description</i> |
|-------------|--------------------|-------------|--|-------------|--------------------|-------------|---------------------------|
| 1 | 308159025 | 1 | Upper Shaft ASM | 14 | 638133001 | 1 | Clamp-Cable, Throttle |
| 2 | 308045014 | 1 | Shaft Clamp ASM | 15 | 660734001 | 1 | Screw |
| 3 | 940657164 | 1 | Decal-Warning | 16 | 678029002 | 1 | Nut-Hex |
| 4 | 638431001 | 1 | Clip-Strap, Shoulder | 17 | 690140011 | 1 | Spring-Compression |
| 5 | 308869003 | 1 | Control Handle ASM | 18 | 518695017 | 1 | Lock-Trigger |
| 6 | 660563002 | 4 | Screw | 19 | 760961005 | 1 | Switch-On/Off |
| 7 | 518696017 | 1 | Trigger | 20 | 308863029 | 1 | Lead |
| 8 | 518210004 | 1 | Tube-Corrugated | 21 | 308225011 | 1 | Cable-Throttle |
| 9 | 690694002 | 1 | Spring-Trigger | 22 | 940864003 | 1 | Label-On/Stop |
| 10 | T660697001 | 1 | Screw | 23 | 518949001 | 1 | Nut-Wing |
| 11 | 570234016 | 1 | Grip-Shaft, Upper | 24 | 526760001 | 1 | Handle-Shaft, Upper |
| 12 | 660925011 | 1 | Screw | 25 | 660857001 | 1 | Screw |
| 13 | | 1 | Power Head ASM Not Serviced Separately, For Replacement Parts See Power Head Components Assembly ● | 26 | 639167001 | 1 | Clamp-Handle, Upper Shaft |

● Not serviced separately

Power Head Components Assembly



Power Head Components Assembly (continued)

| <i>Ref.</i> | <i>Part Number</i> | <i>Qty.</i> | <i>Description</i> | <i>Ref.</i> | <i>Part Number</i> | <i>Qty.</i> | <i>Description</i> |
|-------------|--------------------|-------------|-----------------------|-------------|--------------------|-------------|------------------------------------|
| 1 | 660344001 | 4 | Screw-PH | 29 | 660466001 | 4 | Screw |
| 2 | 300754031 | 1 | Housing-Engine, Front | 30 | 591644002 | 1 | Housing-Engine, Rear |
| 3 | 660353001 | 2 | Screw-Clutch | 31 | 310976001 | 4 | Filter-Fuel |
| 4 | 690696001 | 2 | Washer-Curved | 32 | 940865001 | 1 | Plate-Logo |
| 5 | 307091001 | 1 | Clutch ASM | 33 | 308430016 | 1 | Recoil Starter And Starter Cup ASM |
| 6 | 690695001 | 2 | Washer | 34 | 903279002 | 1 | Gasket-Heat Dam |
| 7 | 690689001 | 1 | Nut-Rotor | 35 | 532001001 | 1 | Heat Dam |
| 8 | 640574002 | 1 | Rotor | 36 | 901697001 | 1 | Gasket |
| 9 | 300749010 | 1 | Crankcase ASM | 37 | T662210002 | 2 | Screw |
| 10 | 690688001 | 2 | Key-Woodruff | 38 | 690700001 | 1 | Clip-Hose |
| 11 | 630002032 | 2 | Gasket-Muffler | 39 | 562967010 | 1 | Fuel Line 45Mm |
| 12 | 300748064 | 1 | Muffler Assembly | 40 | 690699001 | 1 | Clip-Hose |
| 13 | 638268001 | 1 | Screen | 41 | 308480001 | 1 | Carburetor ASM |
| 14 | 660870001 | 3 | Screw-PH | 42 | 9071103 | 1 | Gasket-Carburetor |
| 15 | 638027002 | 1 | Shield-Heat | 43 | 308478004 | 1 | Filter Housing ASM |
| 16 | 660347001 | 2 | Screw-PH | 44 | 590458001 | 1 | Lever-Choke |
| 17 | 660968004 | 2 | Screw And Washer | 45 | 518130001 | 1 | Plate-Carburetor |
| 18 | 290143002 | 1 | Wire-Lead, Red | 46 | 590946001 | 1 | Plate-Choke |
| 19 | 290178024 | 1 | Coil Boot ASM | 47 | 660345001 | 1 | Screw-PH |
| 20 | 290143001 | 1 | Wire-Lead, Black | 48 | 300780002 | 1 | Primer ASM |
| 21 | 690969001 | 2 | Washer | 49 | 660454015 | 2 | T20 Torx Cap Soc HD |
| 22 | 590462001 | 2 | Spacer | 50 | 560873001 | 1 | Element-Filter, Air |
| 23 | 870170001 | 1 | Spark Plug | 51 | 308890002 | 1 | Cover ASM |
| 24 | 66097002 | 3 | T25 Torx Pan Head | 52 | 940686148 | 1 | Decal-Start |
| 25 | 660342001 | 2 | Screw-Socket Head | 53 | 205309002 | 1 | Fuel Tank And Cap ASM |
| 26 | 310816020 | 1 | Cap-Fuel | 54 | 941019010 | 1 | Combustion Warning Label |
| 27 | 642368001 | 1 | Cylinder | 55 | 638267001 | 1 | Cover-Trimmer |
| 28 | 900709007 | 1 | Gasket | | | | |

Attachments and Accessories

For 51978 18in Straight-Shaft Gas Trimmer

Product Name

Model/Part

| | |
|--------------------------|-----------|
| Spark Arrestor Kit | 000998216 |
| High Altitude Kit | 120900107 |

Notes:



Count on it.