



# UltraPlus Blower/Vacuum

Model No. 51558—Serial No. 31500001 and Up

Model No. 51681—Serial No. 31500001 and Up

## Operator's Manual

This product is hand held electric blower and vacuum. It is intended for residential use for blowing dirt, debris, and loose materials and for vacuuming light organic matter, such as grass and leaves. It is not intended for use in enclosed or highly dusty areas, for starting fires, or for vacuuming hard objects. Product Weight: 5.2 kg (11.5 lb).

This product complies with all relevant European directives; for details please see the separate product specific Declaration of Conformity (DOC) sheet.

## IMPORTANT SAFETY INSTRUCTIONS

When using an electrical appliance, basic precautions should always be followed, including the following:

### READ ALL INSTRUCTIONS BEFORE USING THIS APPLIANCE

**WARNING**—To reduce the risk of fire, electric shock, or injury, follow these safety instructions.

To ensure maximum safety, best performance, and to gain knowledge of the appliance, it is essential that you or any other operator of the appliance read and understand the contents of this manual before operating the appliance. Pay particular attention to the safety-alert symbol **▲** which means CAUTION, WARNING or DANGER—personal safety instruction. Read and understand the instruction because it has to do with safety. **Failure to comply with these instructions may result in personal injury, risk of fire, or electrical shock.**

**Important:** This appliance is for household use only.

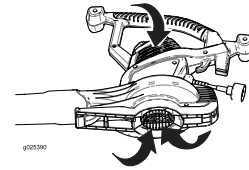
## Training

- Read the instructions carefully. Be familiar with the controls and the proper use of the appliance.
- Never allow children to use the appliance.
- Never allow people unfamiliar with these instructions to use the appliance. Local regulations may restrict the age of the operator.
- Never operate the appliance while people, especially children, or pets are nearby.
- The operator or user is responsible for accidents or hazards occurring to other people or their property.

## Preparation

- While operating the appliance, always wear substantial footwear and long trousers.

- Do not wear loose clothing or jewelry that can be drawn into the air inlet (refer to the following figure). Keep long hair away from the air inlets.



g025390

- Wear protective goggles and hearing protection while operating.
- To prevent dust irritation, wear a face mask.
- Before using, check the supply and extension cord for signs of damage and aging. Do not use the appliance if the cord is damaged or worn.
- Never operate the appliance with defective guards or shields, or without safety devices in place, such as the vacuum bag/vacuum tube or blower tube/inlet cover.
- Only use a CE approved, weather proof extension cord fitted with the proper plug for your location, according to local ordinances.

## Operation

- **Do not** use the appliance on wet surfaces. **Do not** expose it to rain. Store it indoors.
- Do not handle plug or appliance with wet hands.
- Always direct the cord to the rear away from the appliance.
- If a cord becomes damaged during use, disconnect the supply cord from the mains immediately. **Do not touch the cord before disconnecting the supply.**
- Do not carry the appliance by the cord, use the cord as a handle, close a door on the cord, or pull the cord around sharp edges or corners. Keep the cord away from heated surfaces.
- Turn off all controls before unplugging.
- Do not unplug by pulling on cord. To unplug, grasp the plug, not the cord.
- Disconnect the appliance from the power source as follows:
  - Whenever you leave the machine
  - Before clearing a blockage
  - Before checking, cleaning, or working on the appliance
  - If the appliance starts to vibrate abnormally
- Operate the appliance only in daylight or in good artificial light.
- Do not overreach and keep your balance at all times.
- Always be sure of your footing on slopes.
- Walk, never run.
- Keep all cooling air inlets clear of debris. Do not put any object into openings. Do not use with any opening blocked.
- Never blow debris in the direction of bystanders.
- Use extra care when cleaning on stairs.



- Do not use to vacuum up flammable or combustible liquids, such as gasoline, or use in areas where they may be present.
- Do not vacuum anything that is burning or smoking, such as cigarettes, matches, or hot ashes.
- This appliance is provided with double insulation (i.e., Class 2 device). Use only identical replacement parts. See instructions for servicing of Double-Insulated (Class 2) appliances.
- Lightning can cause severe injury or death. If lightning is seen or thunder is heard in the area, do not operate the machine; seek shelter.

## Maintenance and Storage

- Keep all nuts, bolts, and screws tight to be sure the appliance is in safe working condition.
- Check the vacuum bag frequently for wear or deterioration.
- Replace worn or damaged parts.
- If appliance is not working as it should, has been dropped, damaged, left outdoors, or dropped into water, return it to an Authorized Service Dealer.
- Use only genuine replacement parts and accessories.
- Store the appliance in a dry place.

## Sound Pressure

This unit has a sound pressure level at the operator's ear of 93 dBA, which includes an Uncertainty Value (K) of 1 dBA.

Sound pressure level was determined according to the procedures outlined in EN ISO 11201.

## Sound Power

This unit has a guaranteed sound power level of 102 dBA, which includes an Uncertainty Value (K) of 1 dBA.


Sound power level was determined according to the procedures outlined in ISO 11094.

## Vibration

- Measured vibration level = 2.4 m/s<sup>2</sup>
- Uncertainty Value (K) = 1.0 m/s<sup>2</sup>

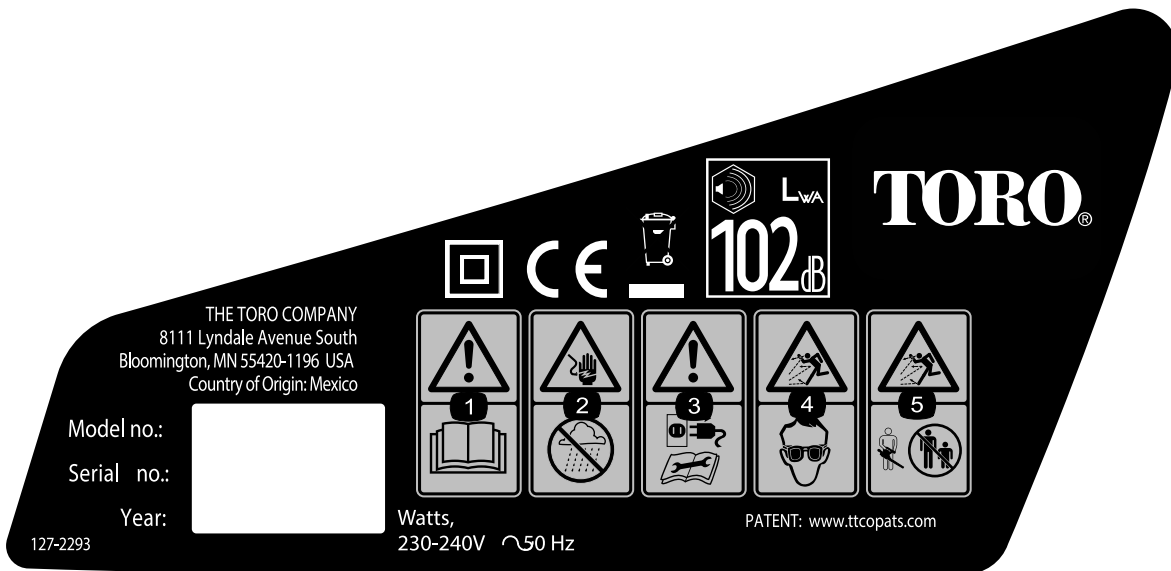
Measured values were determined according to the procedures outlined in EN ISO 20643.

## Waste of Electrical/Electronic Equipment (WEEE)

	<ul style="list-style-type: none"> <li>• EU directive 2002/96/EC classifies this product as an electrical or electronic tool.</li> <li>• <b>Do Not</b> dispose of this tool as unsorted municipal waste.</li> <li>• Dispose of this tool at a collection or recycling center according to local and national law.</li> <li>• The consumer has an important role in reducing the disposal of waste by returning waste electronic/electrical tools for recycling.</li> <li>• Recycling avoids the dispersion of hazardous materials into the municipal waste stream.</li> <li>• The crossed-out bin symbol reminds the user not to dispose of this product as unsorted municipal waste.</li> </ul>
--	--

# Safety and Instructional Decals

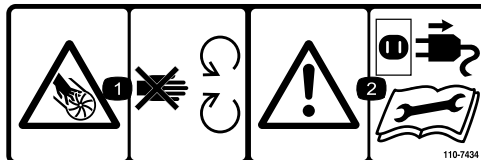
**Important:** Safety and instruction decals are located near areas of potential danger. Replace damaged or missing decals.



decal127-2293b

**127-2293**

1. Read the *Operator's Manual*.
2. Electric shock hazard—keep the blower out of the rain and other wet conditions.
3. Warning—disconnect the blower from the power outlet and read the instructions before servicing or performing maintenance.
4. Thrown object hazard—wear eye protection.
5. Thrown object hazard—keep bystanders away.
6. Contains recyclable materials, do not discard.



decal110-7434

**110-7434**

1. Cutting/dismemberment hazard, impeller—stay away from moving parts.
2. Warning—disconnect the blower from the power outlet and read the instructions before servicing or performing maintenance.

# Setup

## 1

### Assembling the Blower

Parts needed for this procedure:

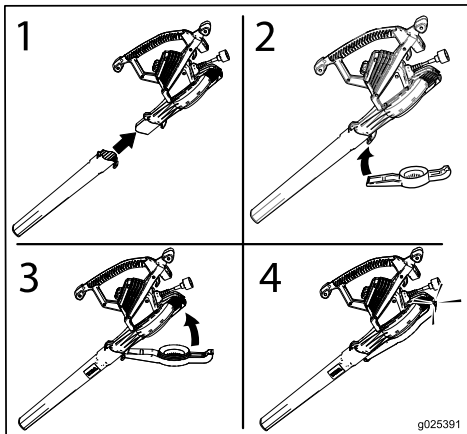
1	Blower tube
1	Inlet cover

### Procedure

Install the blower tube and the bottom inlet cover.

**Important:** The motor should not run unless the bottom inlet cover is locked in place.

**Note:** If the motor runs without the bottom inlet cover in place, do not use the appliance. Return it to an Authorized Service Dealer.



g025391

g025391

## 2

### Converting from Blower to Vacuum

Parts needed for this procedure:

1	Vacuum tube
1	Vacuum bag

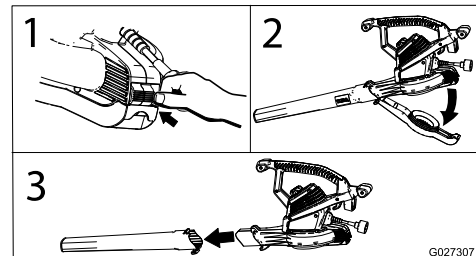
### Procedure

#### ⚠ WARNING

The impeller rotates for a few seconds after you turn off the appliance and can cut or injure fingers.

Do not remove the bottom inlet cover when the motor is running or when the appliance is plugged into a power outlet.

1. Remove the bottom inlet cover and the blower tube.



G027307

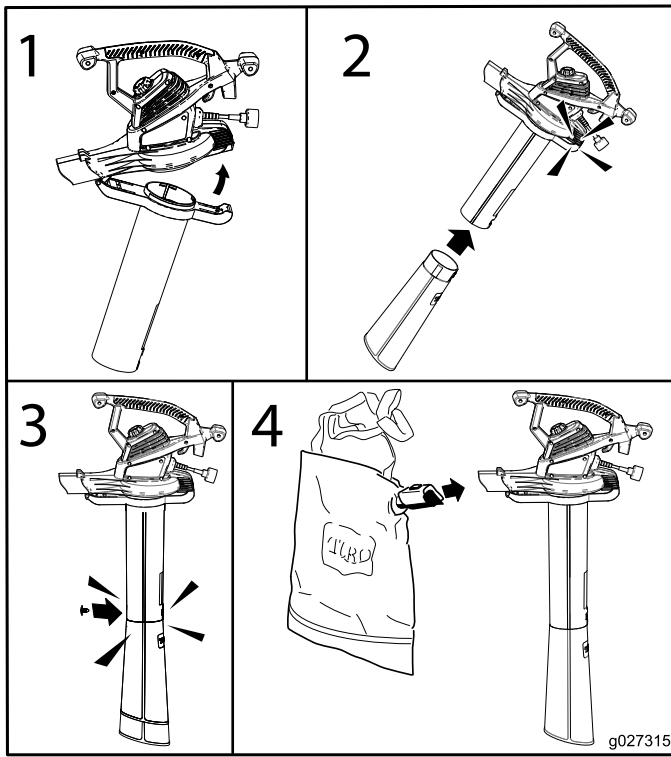
g027307

2. Install the vacuum tube and secure it with the supplied fastener.

**Important:** The motor should not run unless the vacuum tube is locked in place.

**Note:** If the motor runs without the vacuum tube in place, do not use the appliance. Return it to an Authorized Service Dealer.

**Note:** You may need to push the connector firmly to ensure that it seats all the way into the vacuum tube.



3. Install the vacuum bag.
4. Adjust the bag strap as needed for comfortable operation.

# 3

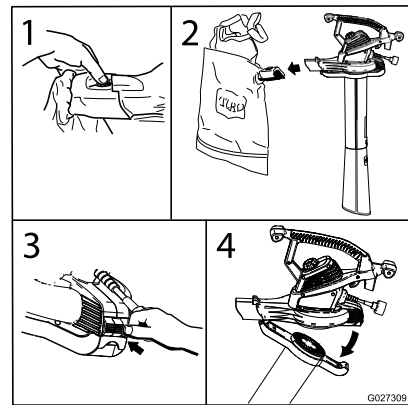
## Converting from Vacuum to Blower

Parts needed for this procedure:

1	Blower tube
1	Inlet cover

### Procedure

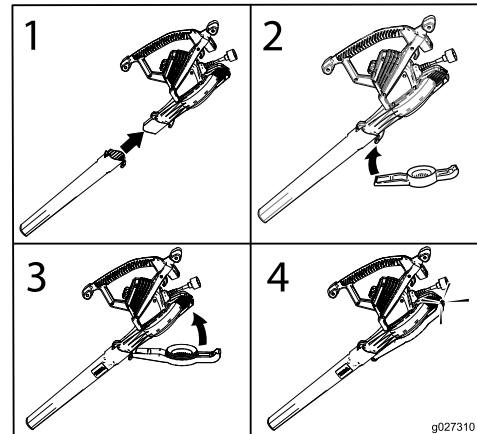
1. Remove the vacuum bag and the vacuum tube.



g027309

2. Install the blower tube and the bottom inlet cover.

**Important:** The motor should not run without the bottom inlet cover locked in place.



g027310

**Note:** If the motor runs without the bottom inlet cover in place, do not use the appliance. Return it to an Authorized Service Dealer.

# Operation

**Important:** This appliance is intended for outdoor, residential use only. Do not use it indoors or for commercial or industrial purposes.

## Connecting to a Power Source

The power supply you use with this appliance should be a residential current device (RCD) with a tripping current of not more than 30 mA. Use only a CE approved extension cord recommended for outdoor use. Do not change the appliance or extension cord plug in any way.

### ⚠ WARNING

If you do not fully seat the extension cord on the inlet plug, or if the plug and cord do not fit firmly, the loose plug could lead to overheating and cause a fire, possibly burning you or others.

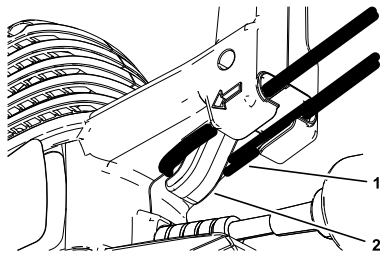
- Ensure that you fully seat the cord on the plug.
- Check the connection regularly to ensure that the cord is firmly attached.
- Do not use a worn-out or loose extension cord.

Extension Cord Length	Minimum Wire Gage
30 m	1.0 mm <sup>2</sup>
45 m	2.0 mm <sup>2</sup>

**Note:** Do not use an extension cord over 45 m.

**Important:** Check the extension cord frequently during use for holes or cracks in the insulation. Do not use a damaged cord. Do not run the cord through standing water or wet grass.

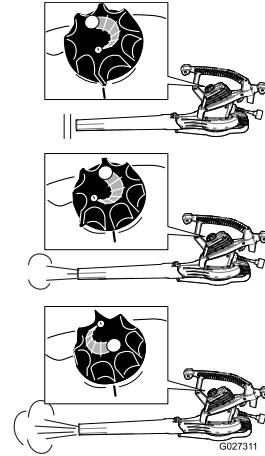
Secure the extension cord to the appliance using the molded in cord-lock feature.



g224197

1. Cord lock
2. Extension cord

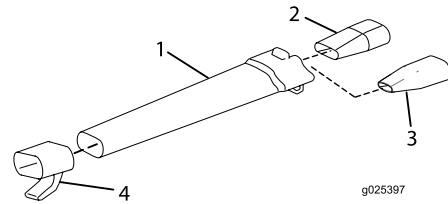
## Starting/Stopping/Adjusting the Air Speed



g027311

## Using the Concentrator Nozzle Accessory

Install the power and concentrator nozzles into the blower tube to help reach into narrow spaces or to remove matted debris from hard surfaces.



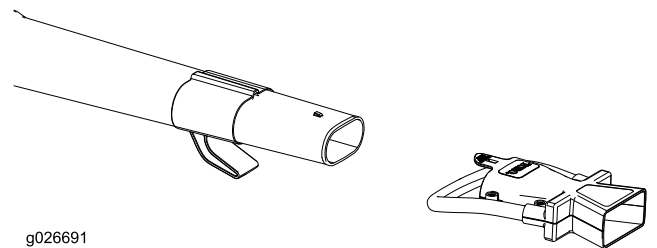
g025397

g025397

1. Blower tube
2. Power nozzle
3. Concentrator nozzle
4. Cord wrap

## Using the Oscillator Nozzle Accessory

Install the oscillator nozzle onto the blower tube to save time clearing hardscapes. It automatically sweeps the back-and-forth, creating a wider blowing path with less side-to-side wrist movement.



g026691

g026691

**Note:** Remove the oscillator nozzle before using the cord wrap to store the blower.

# Using the Appliance as a Blower

The appliance is intended for residential use only. Use it outdoors to move debris as needed.

## ⚠ WARNING

Using the appliance as a blower can throw debris, possibly causing serious personal injury to you or bystanders.

- Do not blow hard objects such as nails, bolts, or rocks.
- Do not operate the blower near bystanders or pets.
- Use extra care when cleaning debris from stairs or other tight areas.
- Wear safety goggles or other suitable eye protection, long pants, and shoes.

# Using the Appliance as a Vacuum

The appliance used as a vacuum is intended for residential use only. Use it outdoors to collect debris as needed.

## ⚠ WARNING

Using the appliance as a vacuum can throw debris, possibly causing serious personal injury to you or bystanders.

- Do not operate the vacuum without the bag installed or with the bag zipper open.
- Do not vacuum sharp, pointed, or hard objects that could be thrown through the fabric of the bag, such as wires, staples, nails, or rocks.



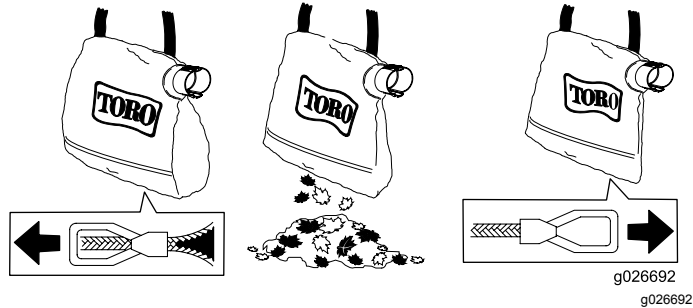
g004942

**Important:** Vacuum only dry leaves and soft items. Hard items such as sticks, rocks, acorns, and pine cones will damage the impeller.

**Important:** Do not force the vacuum tube into a pile of debris or hold the tube upright while force feeding debris into the tube. Either action may clog and damage the impeller. If the vacuum starts to vibrate or make abnormal noise, stop it, unplug the cord, and check for the cause.

# Emptying the Bag

1. Turn off the appliance and unplug it from the power source.
2. Empty any debris from the bag.



Do not store debris in the bag. To clean the bag, turn it inside out and shake out any excess debris. Once a year, hand wash the bag in soapy water and allow it to air dry.

## ⚠ DANGER

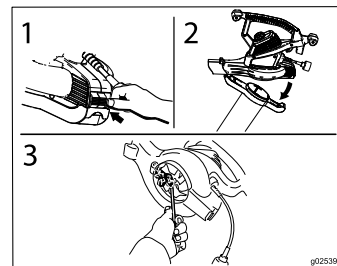
Normal usage of the bag causes it to wear and deteriorate over time. A worn or deteriorated bag allows small objects to be thrown through the bag, possibly injuring you or bystanders.

Check the bag frequently. If it is worn or deteriorated, replace it with a genuine Toro vacuum bag.

Always use the shoulder strap whenever you use the appliance with the bag. This prevents the bag from dragging on the ground, reducing bag wear and deterioration.

# Removing Clogged Debris from the Impeller

1. Turn off and **unplug** the appliance from the power source and wait for all moving parts to stop.
2. Remove the vacuum tube then remove the debris from impeller blades.



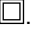
g025399

3. Check the impeller for any signs of damage. If it is damaged, contact your Authorized Toro Dealer.
4. Install the vacuum tube or, if you want to switch to blower mode, the bottom inlet cover. Refer to [2 Converting from Blower to Vacuum \(page 4\)](#) or [3 Converting from Vacuum to Blower \(page 5\)](#) for more information.

# Service

Toro has designed this product to give you years of trouble free use. Should it need service, bring the product to your Authorized Service Dealer.

## Double-insulated (Class 2) Appliances

In a double-insulated (Class 2) appliance, two systems of insulation are provided instead of grounding. No grounding means is provided on a double-insulated (Class 2) appliance, nor should a means for grounding be added to the appliance. Servicing a double-insulated (Class 2) appliance requires extreme care and knowledge of the system, and should be done only by the qualified service personnel at your Authorized Toro Service Dealer. Replacement parts for a double-insulated (Class 2) appliance must be identical to the parts they replace. A double-insulated (Class 2) appliance is marked with the symbol (square within a square) .

## Storage

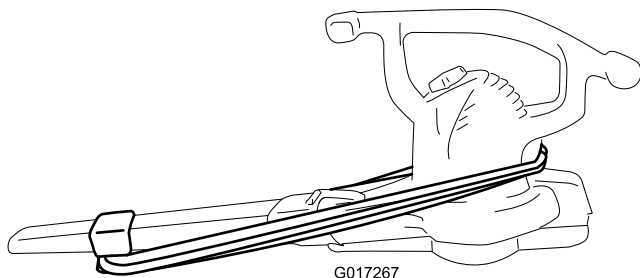
Store the appliance and extension cord indoors, in a cool dry location, out of reach of children and animals.

## Using the Cord Wrap

Install the cord wrap as illustrated below. Wrap the extension cord around the blower for ease of storage.

**Note:** Remove the oscillator nozzle before wrapping the cord.

**Important:** Always unplug the blower before wrapping the cord or storing it.



## Troubleshooting

- Ensure that the bottom inlet cover or vacuum tube is locked in place.
- Ensure that the power cord is secured in place on the back of the appliance and that the plug is fully seated.



**Notes:**

**Notes:**

## International Distributor List

<b>Distributor:</b>	<b>Country:</b>	<b>Phone Number:</b>	<b>Distributor:</b>	<b>Country:</b>	<b>Phone Number:</b>
Agrolanc Kft	Hungary	36 27 539 640	Maquiver S.A.	Colombia	57 1 236 4079
Balama Prima Engineering Equip.	Hong Kong	852 2155 2163	Maruyama Mfg. Co. Inc.	Japan	81 3 3252 2285
B-Ray Corporation	Korea	82 32 551 2076	Mountfield a.s.	Czech Republic	420 255 704 220
Casco Sales Company	Puerto Rico	787 788 8383	Mountfield a.s.	Slovakia	420 255 704 220
Ceres S.A.	Costa Rica	506 239 1138	Munditol S.A.	Argentina	54 11 4 821 9999
CSSC Turf Equipment (pvt) Ltd.	Sri Lanka	94 11 2746100	Norma Garden	Russia	7 495 411 61 20
Cyril Johnston & Co.	Northern Ireland	44 2890 813 121	Oslinger Turf Equipment SA	Ecuador	593 4 239 6970
Cyril Johnston & Co.	Republic of Ireland	44 2890 813 121	Oy Hako Ground and Garden Ab	Finland	358 987 00733
Equiver	Mexico	52 55 539 95444	Parkland Products Ltd.	New Zealand	64 3 34 93760
Femco S.A.	Guatemala	502 442 3277	Perfetto	Poland	48 61 8 208 416
ForGarder OU	Estonia	372 384 6060	Pratoverde SRL.	Italy	39 049 9128 128
G.Y.K. Company Ltd.	Japan	81 726 325 861	Prochaska & Cie	Austria	43 1 278 5100
Geomechaniki of Athens	Greece	30 10 935 0054	RT Cohen 2004 Ltd.	Israel	972 986 17979
Golf international Turizm	Turkey	90 216 336 5993	Riversa	Spain	34 9 52 83 7500
Guandong Golden Star	China	86 20 876 51338	Lely Turfcare	Denmark	45 66 109 200
Hako Ground and Garden	Sweden	46 35 10 0000	Solvart S.A.S.	France	33 1 30 81 77 00
Hako Ground and Garden	Norway	47 22 90 7760	Spypros Stavrinides Limited	Cyprus	357 22 434131
Hayter Limited (U.K.)	United Kingdom	44 1279 723 444	Surge Systems India Limited	India	91 1 292299901
Hydroturf Int. Co Dubai	United Arab Emirates	97 14 347 9479	T-Markt Logistics Ltd.	Hungary	36 26 525 500
Hydroturf Egypt LLC	Egypt	202 519 4308	Toro Australia	Australia	61 3 9580 7355
Irrimac	Portugal	351 21 238 8260	Toro Europe NV	Belgium	32 14 562 960
Irrigation Products Int'l Pvt Ltd.	India	0091 44 2449 4387	Valtech	Morocco	212 5 3766 3636
Jean Heybroek b.v.	Netherlands	31 30 639 4611	Victus Emak	Poland	48 61 823 8369

### European Privacy Notice

#### The Information Toro Collects

Toro Warranty Company (Toro) respects your privacy. In order to process your warranty claim and contact you in the event of a product recall, we ask you to share certain personal information with us, either directly or through your local Toro company or dealer.

The Toro warranty system is hosted on servers located within the United States where privacy law may not provide the same protection as applies in your country.

**BY SHARING YOUR PERSONAL INFORMATION WITH US, YOU ARE CONSENTING TO THE PROCESSING OF YOUR PERSONAL INFORMATION AS DESCRIBED IN THIS PRIVACY NOTICE.**

#### The Way Toro Uses Information

Toro may use your personal information to process warranty claims, to contact you in the event of a product recall and for any other purpose which we tell you about. Toro may share your information with Toro's affiliates, dealers or other business partners in connection with any of these activities. We will not sell your personal information to any other company. We reserve the right to disclose personal information in order to comply with applicable laws and with requests by the appropriate authorities, to operate our systems properly or for our own protection or that of other users.

#### Retention of your Personal Information

We will keep your personal information as long as we need it for the purposes for which it was originally collected or for other legitimate purposes (such as regulatory compliance), or as required by applicable law.

#### Toro's Commitment to Security of Your Personal Information

We take reasonable precautions in order to protect the security of your personal information. We also take steps to maintain the accuracy and current status of personal information.

#### Access and Correction of your Personal Information

If you would like to review or correct your personal information, please contact us by email at [legal@toro.com](mailto:legal@toro.com).

### Australian Consumer Law

Australian customers will find details relating to the Australian Consumer Law either inside the box or at your local Toro Dealer.

## The Toro Promise - Electric Products

### A Three-Year Full Warranty for Residential Use for the United States and Canada

The Toro Company and its affiliate, Toro Warranty Company, pursuant to an agreement between them, jointly warrant this product for three years against defects in material or workmanship when used for normal residential purposes.\*

If you think your Toro Product contains a defect in materials or workmanship, if you have questions or problems, and before returning this product call toll free:

**Trimmers:**

1-800-237-2654 (US)  
1-800-248-3258 (Canada)

**Blowers:**

1-888-367-6631 (US)  
1-888-430-1687 (Canada)

**Snowthrowers:**

1-800-808-2963 (US)  
1-800-808-3072 (Canada)

To receive a replacement or repair, at our option, return the complete unit to the seller. United States and Canada customers may return their product, with proof of purchase, to any Authorized Service Dealer. United States customers may also return their product, with proof of purchase, postage prepaid, to the Toro Service Center, 5500 SE Delaware, Ankeny, IA 50021.

This warranty covers product defects only. **Neither The Toro Company nor Toro Warranty Company is liable for indirect, incidental, or consequential damages in connection with the use of the Toro Products covered by this warranty, including any cost or expense of providing substitute equipment or service during reasonable periods of malfunction or non-use pending completion of repairs under this warranty. Some states do not allow exclusions of incidental or consequential damages, so the above exclusions may not apply to you.** This warranty gives you specific legal rights, and you may also have other rights which vary from state to state.

### Countries Other than the United States and Canada

Customers who have purchased Toro products exported from the United States or Canada should contact their Toro Distributor (Dealer) to obtain guarantee policies for your country, province, or state. If for any reason you are dissatisfied with your Distributor's service or have difficulty obtaining guarantee information, contact the Toro importer. If all other remedies fail, you may contact us at Toro Warranty Company.

### Australian Consumer Law

Australian customers will find details relating to the Australian Consumer Law either inside the box or at your local Toro Dealer.

\* Residential use means use of the product on the same lot as your home.

Part Number 374-0262 Rev. F